

Data Path : Z:\VOASRV\HPCHEM1\MSVOA Y\DATA\VY070920\  
 Data File : VY003148.D  
 Acq On : 09 Jul 2020 16:57  
 Operator : SY/MD  
 Sample : L3255-09  
 Misc : 6.45G/5ML/MSVOA Y/SOIL  
 ALS Vial : 9 Sample Multiplier: 1

Instrument :  
 MSVOA\_Y  
 ClientSampleId :  
 CHRT-17

Quant Time: Jul 10 04:29:13 2020  
 Quant Method : Z:\VOASRV\HPCHEM1\MSVOA\_Y\METHODS\82Y062920S.M  
 Quant Title : SW846 8260  
 QLast Update : Tue Jun 30 04:11:35 2020  
 Response via : Initial Calibration

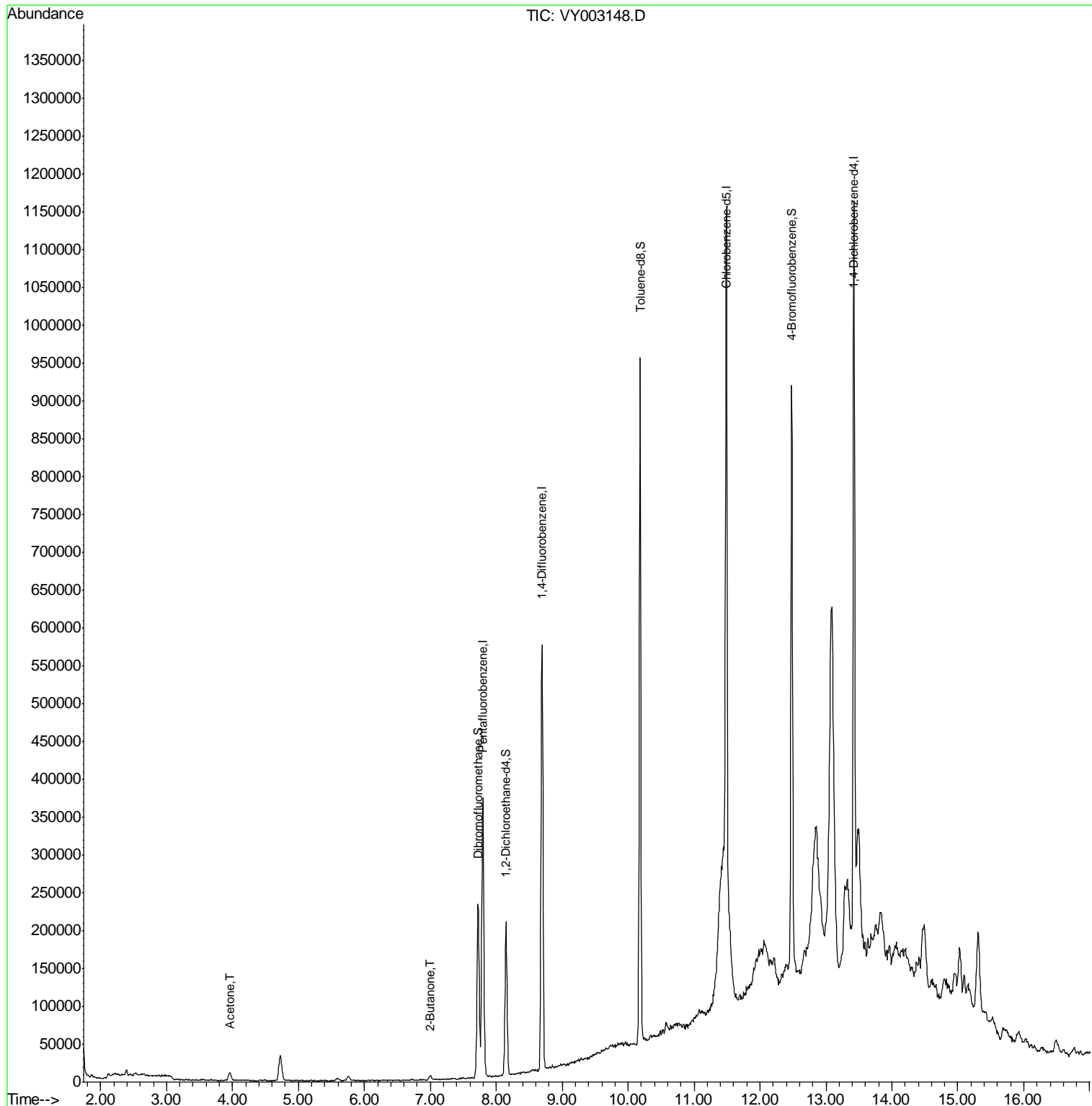
Internal Standards	R.T.	QIon	Response	Conc	Units	Dev(Min)
1) Pentafluorobenzene	7.80	168	307272	50.00	ug/l	0.00
34) 1,4-Difluorobenzene	8.69	114	492588	50.00	ug/l	0.00
63) Chlorobenzene-d5	11.49	117	487160	50.00	ug/l	0.00
72) 1,4-Dichlorobenzene-d4	13.42	152	253404	50.00	ug/l	0.00
System Monitoring Compounds						
33) 1,2-Dichloroethane-d4	8.15	65	160166	52.48	ug/l	0.00
Spiked Amount	50.000		Recovery	=	104.96%	
35) Dibromofluoromethane	7.72	113	160483	52.23	ug/l	0.00
Spiked Amount	50.000		Recovery	=	104.46%	
50) Toluene-d8	10.18	98	596548	52.11	ug/l	0.00
Spiked Amount	50.000		Recovery	=	104.22%	
62) 4-Bromofluorobenzene	12.48	95	221846	55.05	ug/l	0.00
Spiked Amount	50.000		Recovery	=	110.10%	
Target Compounds						
16) Acetone	3.95	43	19316	26.836	ug/l	96
25) 2-Butanone	7.00	43	9267	8.105	ug/l #	87

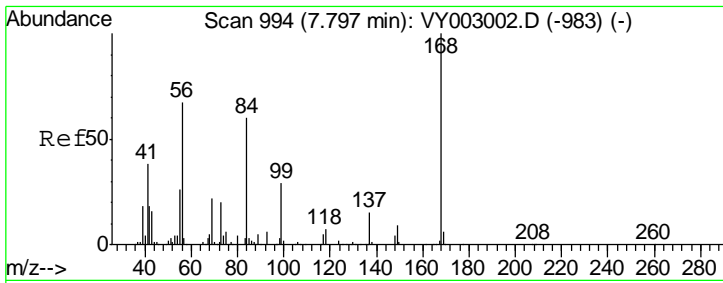
(#) = qualifier out of range (m) = manual integration (+) = signals summed

Data Path : Z:\VOASRV\HPCHEM1\MSVOA Y\DATA\VY070920\  
 Data File : VY003148.D  
 Acq On : 09 Jul 2020 16:57  
 Operator : SY/MD  
 Sample : L3255-09  
 Misc : 6.45G/5ML/MSVOA Y/SOIL  
 ALS Vial : 9 Sample Multiplier: 1

Instrument :  
 MSVOA\_Y  
 ClientSampleId :  
 CHRT-17

Quant Time: Jul 10 04:29:13 2020  
 Quant Method : Z:\VOASRV\HPCHEM1\MSVOA\_Y\METHODS\82Y062920S.M  
 Quant Title : SW846 8260  
 QLast Update : Tue Jun 30 04:11:35 2020  
 Response via : Initial Calibration

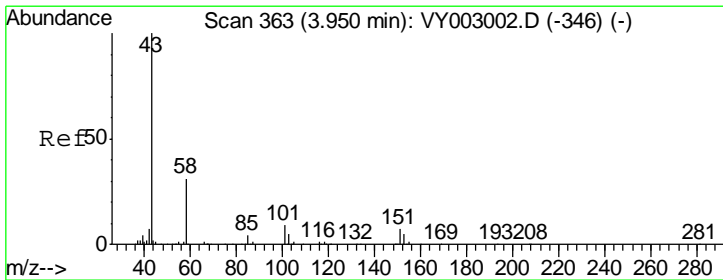
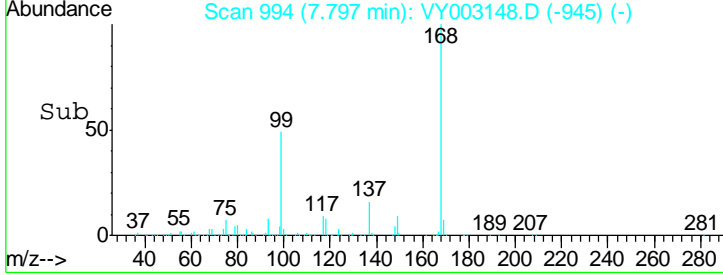
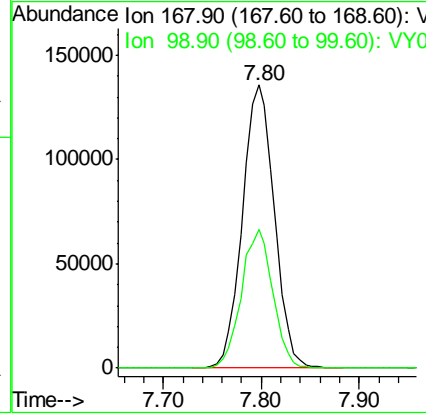
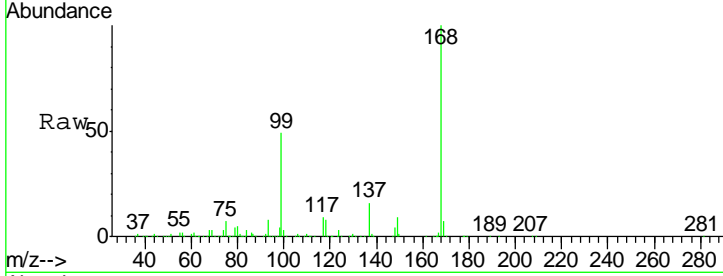




#1  
 Pentafluorobenzene  
 Concen: 50.000 ug/l  
 RT: 7.80 min Scan# 994  
 Delta R.T. -0.00 min  
 Lab File: VY003148.D  
 Acq: 09 Jul 2020 16:57

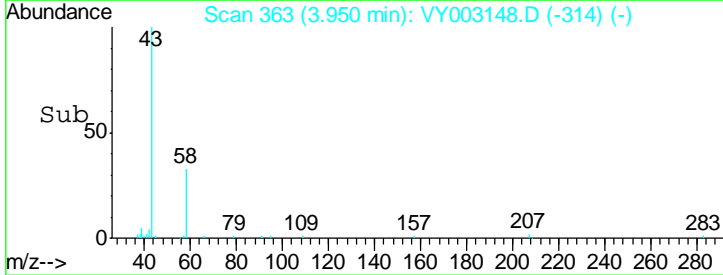
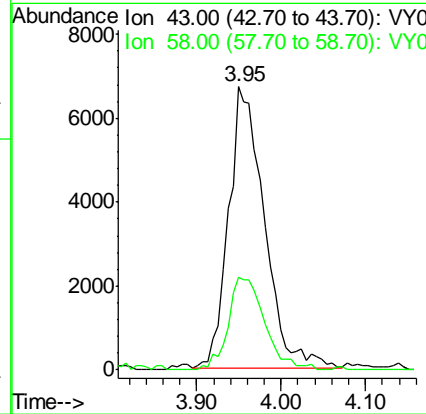
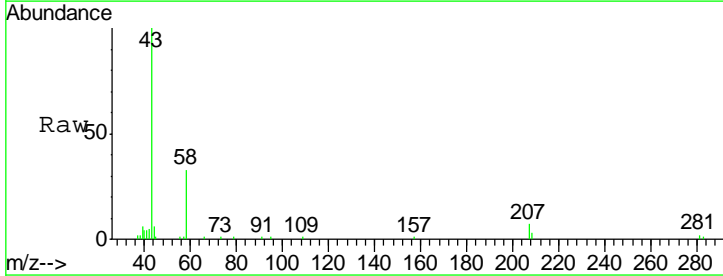
**Instrument :**  
 MSVOA\_Y  
**ClientSampled :**  
 CHRT-17

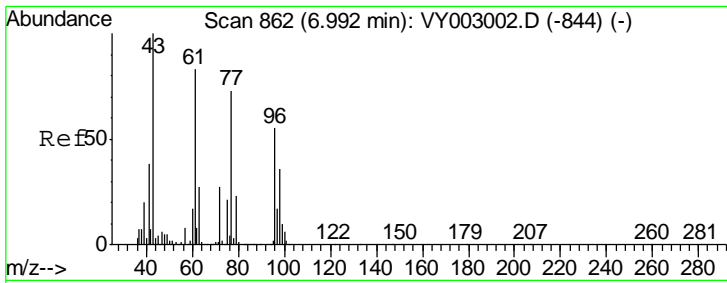
Tgt Ion: 168 Resp: 307272  
 Ion Ratio Lower Upper  
 168 100  
 99 49.1 39.2 58.8



#16  
 Acetone  
 Concen: 26.836 ug/l  
 RT: 3.95 min Scan# 363  
 Delta R.T. -0.00 min  
 Lab File: VY003148.D  
 Acq: 09 Jul 2020 16:57

Tgt Ion: 43 Resp: 19316  
 Ion Ratio Lower Upper  
 43 100  
 58 33.1 24.7 37.1

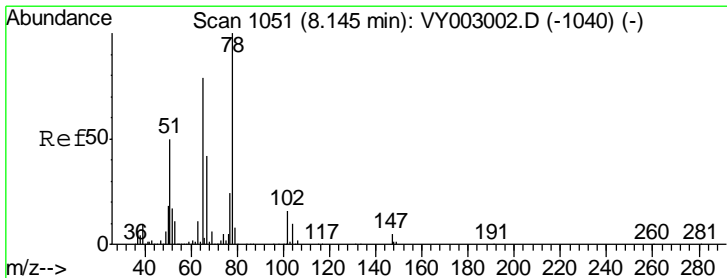
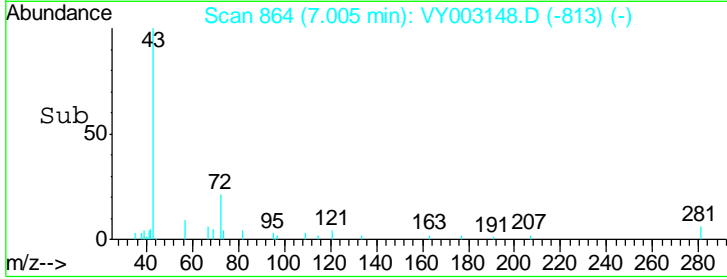
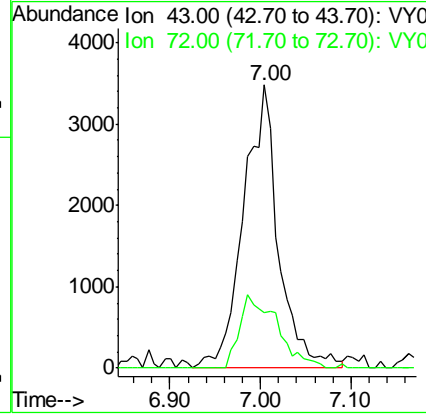
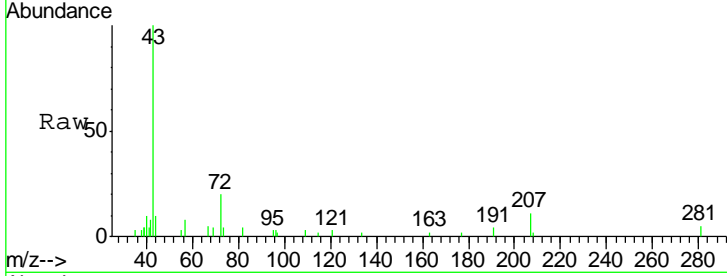




#25  
 2-Butanone  
 Concen: 8.105 ug/l  
 RT: 7.00 min Scan# 864  
 Delta R.T. 0.01 min  
 Lab File: VY003148.D  
 Acq: 09 Jul 2020 16:57

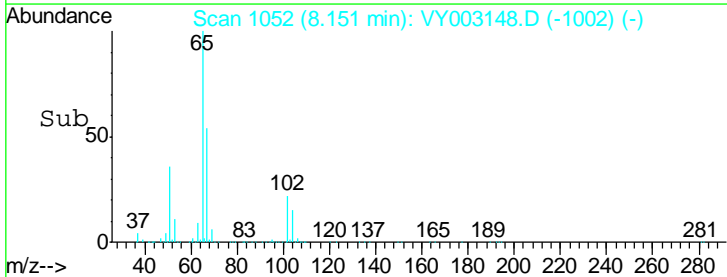
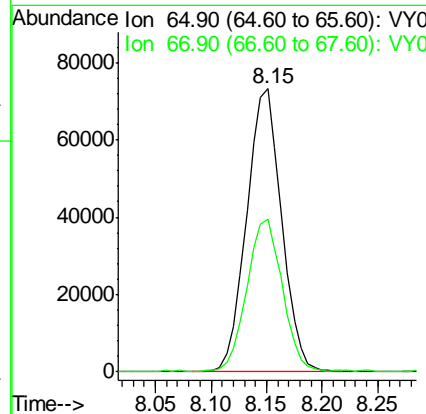
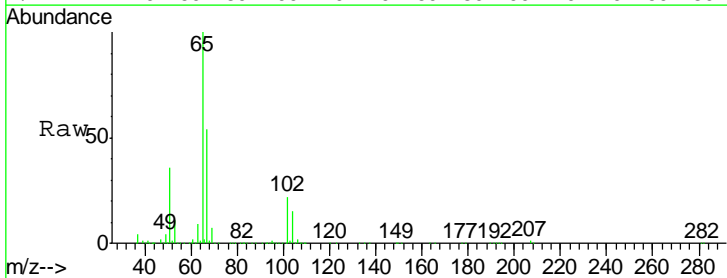
Instrument :  
 MSVOA\_Y  
 ClientSampled :  
 CHRT-17

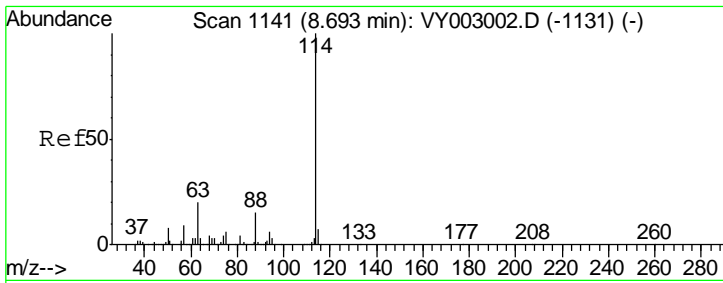
Tgt Ion: 43 Resp: 9267  
 Ion Ratio Lower Upper  
 43 100  
 72 19.8 21.4 32.0#



#33  
 1,2-Dichloroethane-d4  
 Concen: 52.482 ug/l  
 RT: 8.15 min Scan# 1052  
 Delta R.T. 0.01 min  
 Lab File: VY003148.D  
 Acq: 09 Jul 2020 16:57

Tgt Ion: 65 Resp: 160166  
 Ion Ratio Lower Upper  
 65 100  
 67 53.9 0.0 105.6

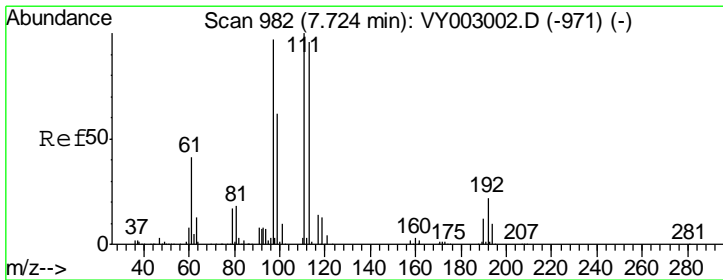
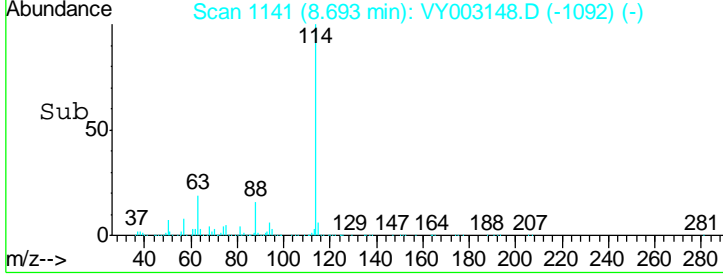
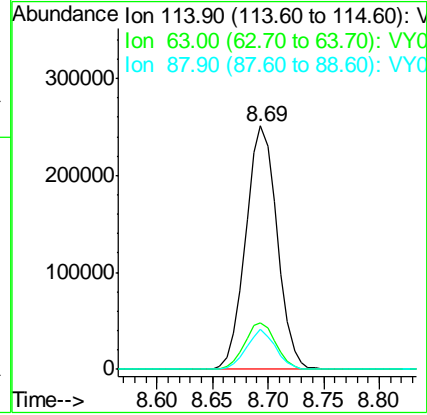
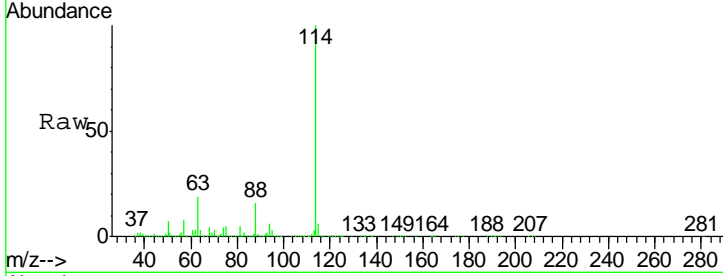




#34  
 1,4-Difluorobenzene  
 Concen: 50.000 ug/l  
 RT: 8.69 min Scan# 1141  
 Delta R.T. -0.00 min  
 Lab File: VY003148.D  
 Acq: 09 Jul 2020 16:57

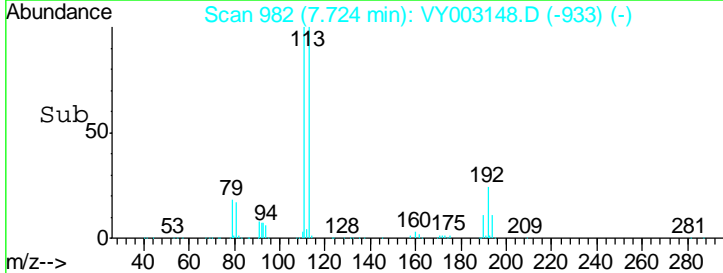
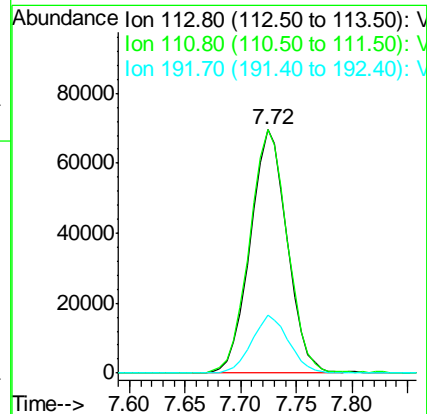
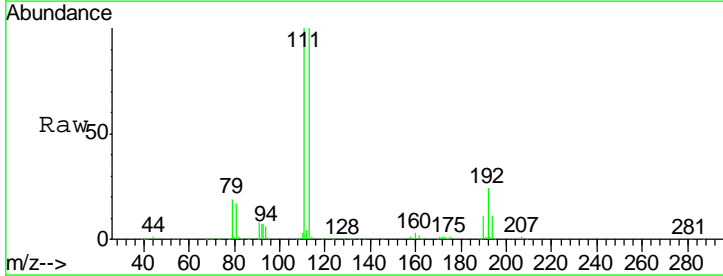
Instrument :  
 MSVOA\_Y  
 ClientSampled :  
 CHRT-17

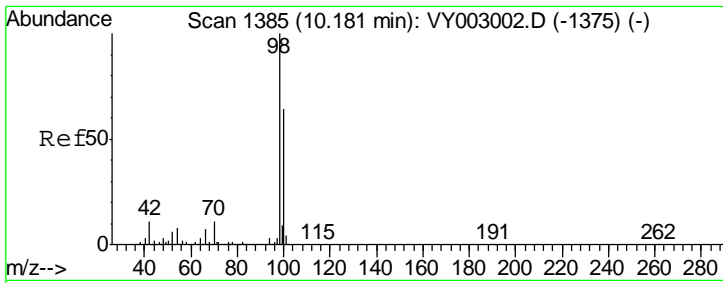
Tgt Ion	Resp	Lower	Upper
114	492588		
63	19.3	0.0	40.6
88	16.3	0.0	30.0



#35  
 Dibromofluoromethane  
 Concen: 52.226 ug/l  
 RT: 7.72 min Scan# 982  
 Delta R.T. -0.00 min  
 Lab File: VY003148.D  
 Acq: 09 Jul 2020 16:57

Tgt Ion	Resp	Lower	Upper
113	160483		
111	103.1	82.6	123.8
192	23.8	18.1	27.1

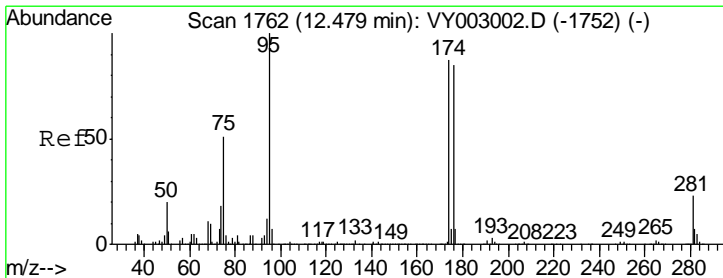
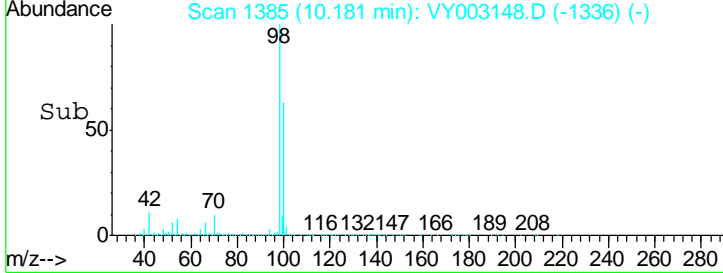
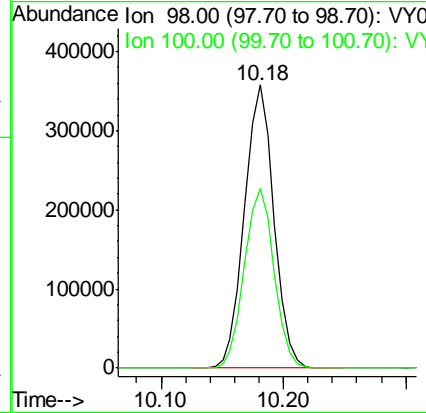
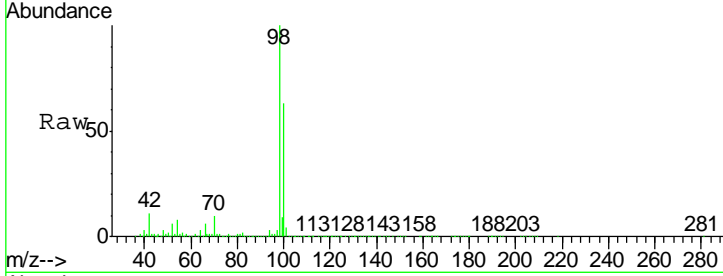




#50  
 Toluene-d8  
 Concen: 52.111 ug/l  
 RT: 10.18 min Scan# 1385  
 Delta R.T. -0.00 min  
 Lab File: VY003148.D  
 Acq: 09 Jul 2020 16:57

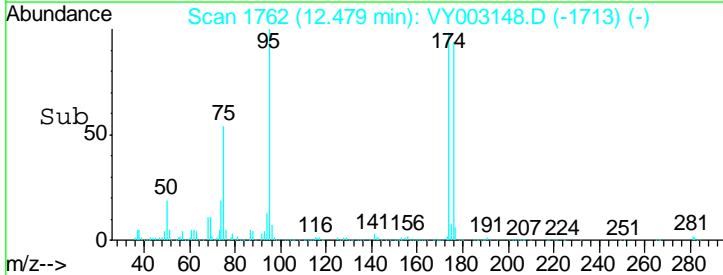
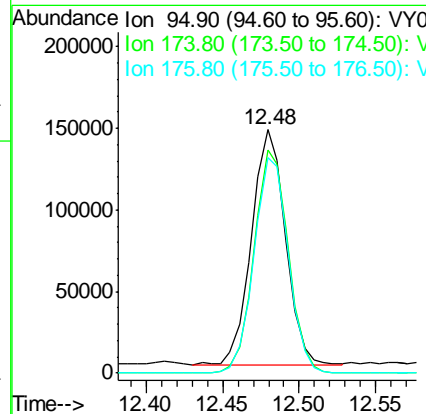
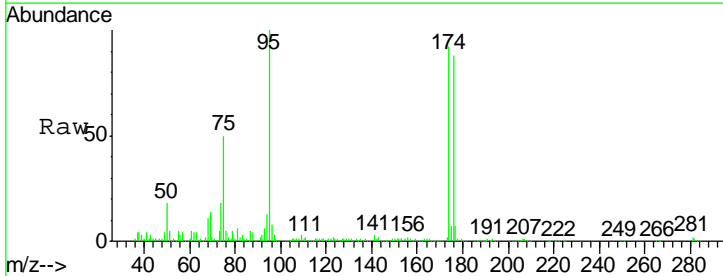
Instrument :  
 MSVOA\_Y  
 ClientSampled :  
 CHRT-17

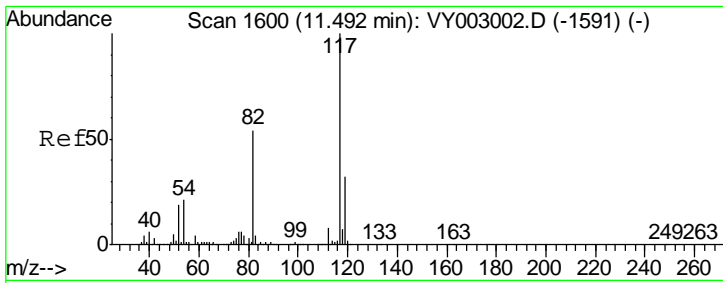
Tgt Ion: 98 Resp: 596548  
 Ion Ratio Lower Upper  
 98 100  
 100 64.2 51.1 76.7



#62  
 4-Bromofluorobenzene  
 Concen: 55.054 ug/l  
 RT: 12.48 min Scan# 1762  
 Delta R.T. -0.00 min  
 Lab File: VY003148.D  
 Acq: 09 Jul 2020 16:57

Tgt Ion: 95 Resp: 221846  
 Ion Ratio Lower Upper  
 95 100  
 174 95.2 0.0 184.8  
 176 92.5 0.0 183.0

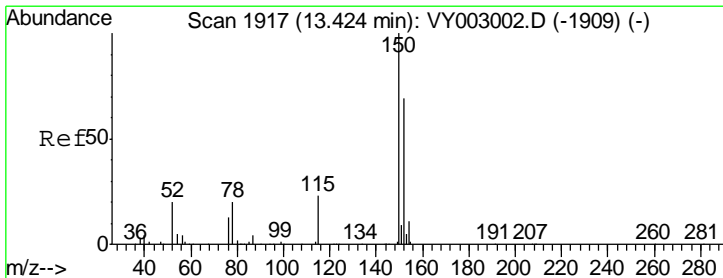
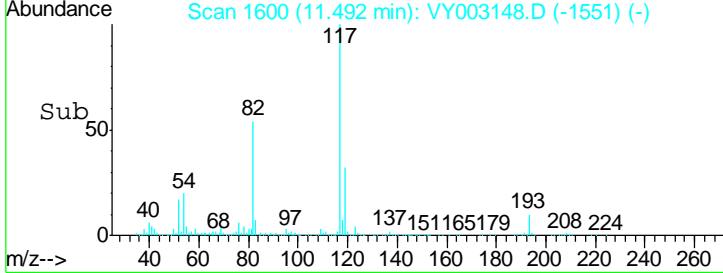
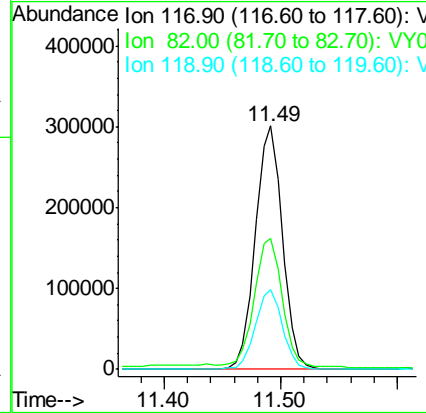
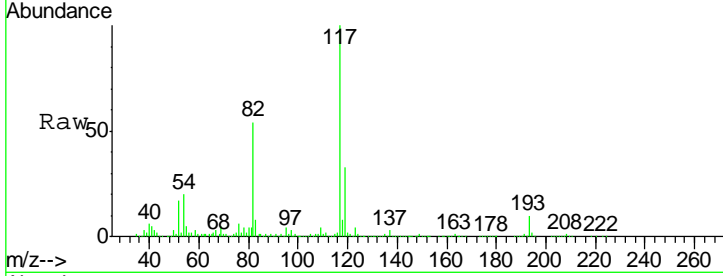




#63  
 Chlorobenzene-d5  
 Concen: 50.000 ug/l  
 RT: 11.49 min Scan# 1600  
 Delta R.T. -0.00 min  
 Lab File: VY003148.D  
 Acq: 09 Jul 2020 16:57

Instrument :  
 MSVOA\_Y  
 ClientSampled :  
 CHRT-17

Tgt Ion	Resp	Lower	Upper
117	487160		
82	52.7	43.0	64.6
119	32.4	25.8	38.8



#72  
 1,4-Dichlorobenzene-d4  
 Concen: 50.000 ug/l  
 RT: 13.42 min Scan# 1917  
 Delta R.T. -0.00 min  
 Lab File: VY003148.D  
 Acq: 09 Jul 2020 16:57

Tgt Ion	Resp	Lower	Upper
152	253404		
115	55.1	27.3	81.9
150	156.1	0.0	343.4

