

Data Path : Z:\voasrv\HPCHEM1\MSVOA\_Y\Data\VY071823\  
 Data File : VY014704.D  
 Acq On : 18 Jul 2023 16:16  
 Operator : SY/MD  
 Sample : 03646-04  
 Misc : 5.08g/5.0mL/MSVOA\_Y/SOIL  
 ALS Vial : 19 Sample Multiplier: 1

Instrument :  
 MSVOA\_Y  
 ClientSampleId :  
 YARD-1

Quant Time: Jul 19 04:06:11 2023  
 Quant Method : Z:\voasrv\HPCHEM1\MSVOA\_Y\methods\82Y071323S.M  
 Quant Title : SW846 8260  
 QLast Update : Fri Jul 14 02:09:50 2023  
 Response via : Initial Calibration

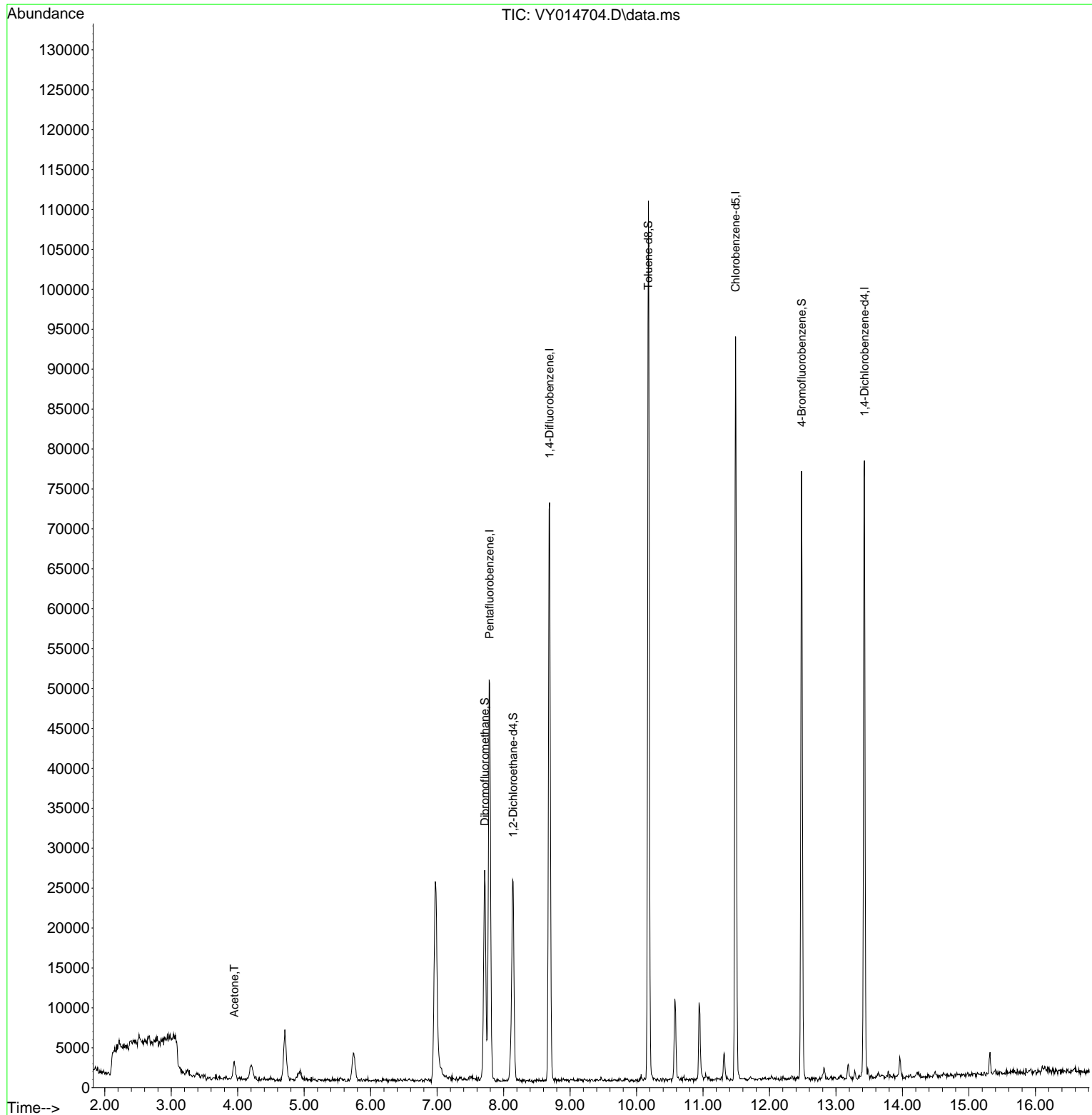
| Compound                    | R.T.   | QIon  | Response | Conc     | Units | Dev(Min)      |
|-----------------------------|--------|-------|----------|----------|-------|---------------|
| -----                       |        |       |          |          |       |               |
| Internal Standards          |        |       |          |          |       |               |
| 1) Pentafluorobenzene       | 7.789  | 168   | 39465    | 50.000   | ug/l  | 0.00          |
| 34) 1,4-Difluorobenzene     | 8.691  | 114   | 63494    | 50.000   | ug/l  | 0.00          |
| 63) Chlorobenzene-d5        | 11.489 | 117   | 51806    | 50.000   | ug/l  | 0.00          |
| 72) 1,4-Dichlorobenzene-d4  | 13.428 | 152   | 20431    | 50.000   | ug/l  | 0.00          |
| System Monitoring Compounds |        |       |          |          |       |               |
| 33) 1,2-Dichloroethane-d4   | 8.142  | 65    | 19017    | 42.286   | ug/l  | 0.00          |
| Spiked Amount               | 50.000 | Range | 50 - 163 | Recovery | =     | 84.580%       |
| 35) Dibromofluoromethane    | 7.715  | 113   | 18320    | 45.326   | ug/l  | 0.00          |
| Spiked Amount               | 50.000 | Range | 54 - 147 | Recovery | =     | 90.660%       |
| 50) Toluene-d8              | 10.178 | 98    | 72027    | 48.335   | ug/l  | 0.00          |
| Spiked Amount               | 50.000 | Range | 58 - 134 | Recovery | =     | 96.680%       |
| 62) 4-Bromofluorobenzene    | 12.483 | 95    | 22365    | 39.142   | ug/l  | 0.00          |
| Spiked Amount               | 50.000 | Range | 30 - 143 | Recovery | =     | 78.280%       |
| Target Compounds            |        |       |          |          |       |               |
| 16) Acetone                 | 3.948  | 43    | 3354     | 23.535   | ug/l  | Qvalue<br>100 |
| -----                       |        |       |          |          |       |               |

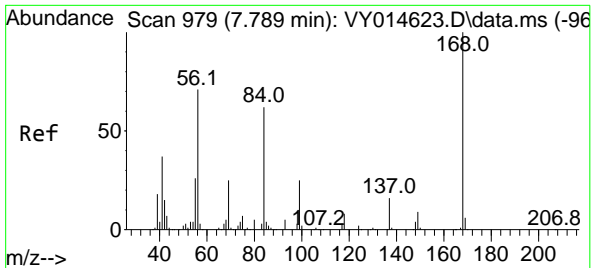
(#) = qualifier out of range (m) = manual integration (+) = signals summed

Data Path : Z:\voasrv\HPCHEM1\MSVOA\_Y\Data\VY071823\  
 Data File : VY014704.D  
 Acq On : 18 Jul 2023 16:16  
 Operator : SY/MD  
 Sample : 03646-04  
 Misc : 5.08g/5.0mL/MSVOA\_Y/SOIL  
 ALS Vial : 19 Sample Multiplier: 1

Instrument :  
 MSVOA\_Y  
 ClientSampleId :  
 YARD-1

Quant Time: Jul 19 04:06:11 2023  
 Quant Method : Z:\voasrv\HPCHEM1\MSVOA\_Y\methods\82Y071323S.M  
 Quant Title : SW846 8260  
 QLast Update : Fri Jul 14 02:09:50 2023  
 Response via : Initial Calibration

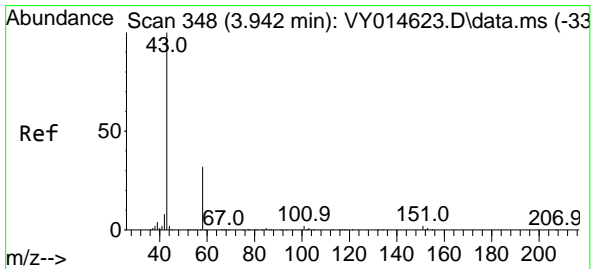
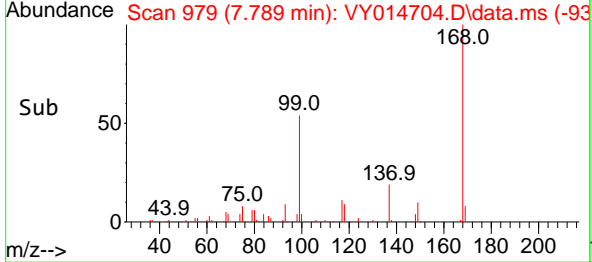
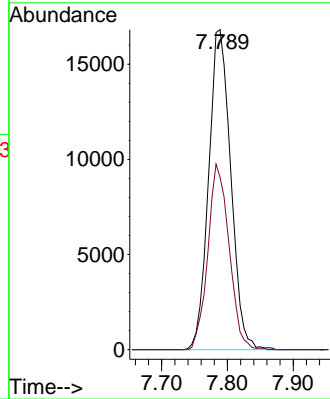
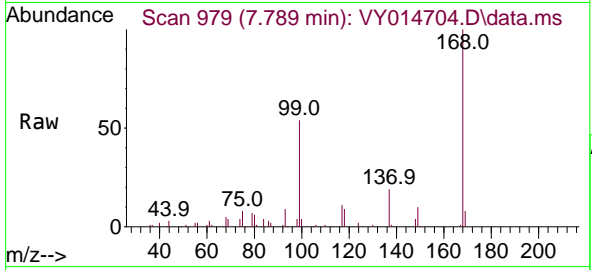




#1  
 Pentafluorobenzene  
 Concen: 50.000 ug/l  
 RT: 7.789 min Scan# 91  
 Delta R.T. -0.000 min  
 Lab File: VY014704.D  
 Acq: 18 Jul 2023 16:16

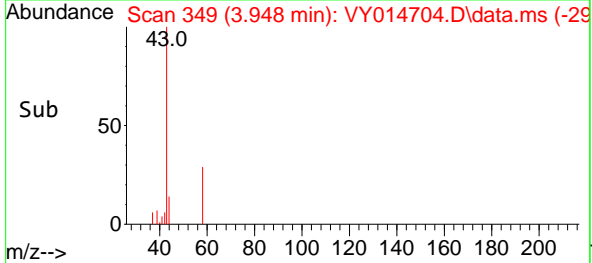
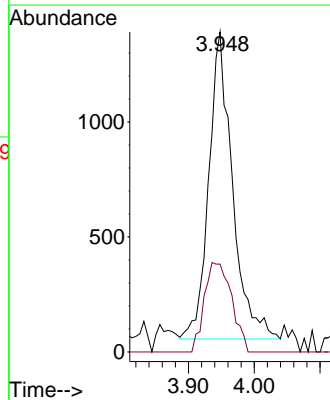
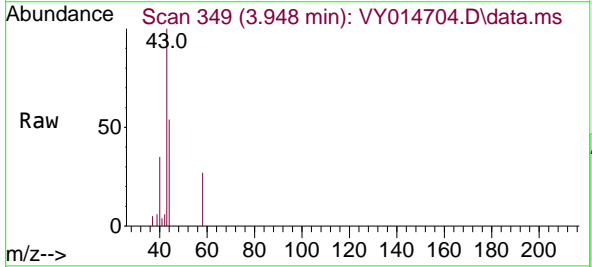
Instrument :  
 MSVOA\_Y  
 ClientSampleId :  
 YARD-1

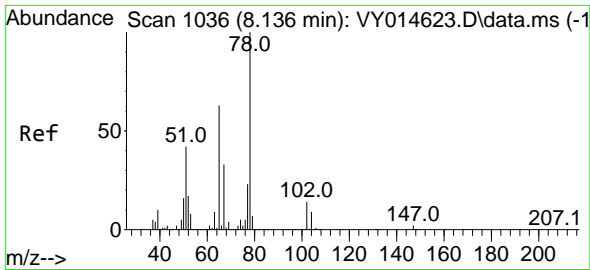
Tgt Ion:168 Resp: 39465  
 Ion Ratio Lower Upper  
 168 100  
 99 53.9 43.4 65.0



#16  
 Acetone  
 Concen: 23.535 ug/l  
 RT: 3.948 min Scan# 349  
 Delta R.T. 0.006 min  
 Lab File: VY014704.D  
 Acq: 18 Jul 2023 16:16

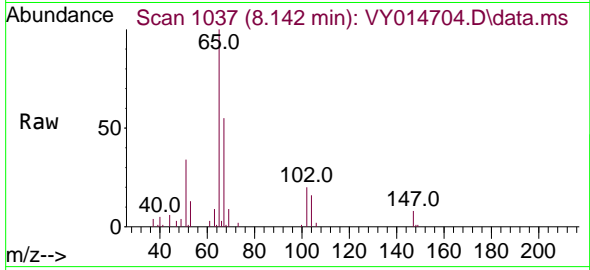
Tgt Ion: 43 Resp: 3354  
 Ion Ratio Lower Upper  
 43 100  
 58 28.6 22.7 34.1



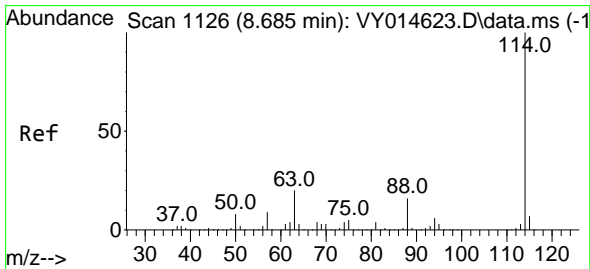
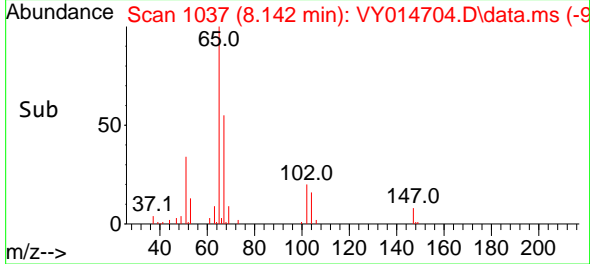
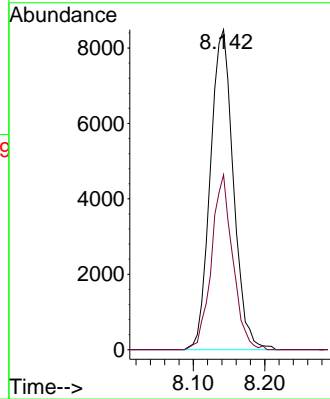


#33  
 1,2-Dichloroethane-d4  
 Concen: 42.286 ug/l  
 RT: 8.142 min Scan# 1036  
 Delta R.T. 0.006 min  
 Lab File: VY014704.D  
 Acq: 18 Jul 2023 16:16

Instrument : MSVOA\_Y  
 ClientSampleId : YARD-1

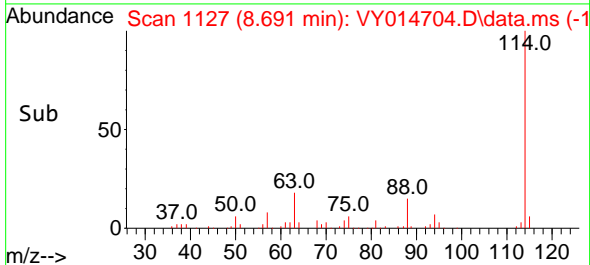
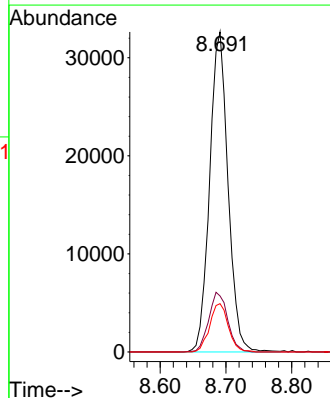
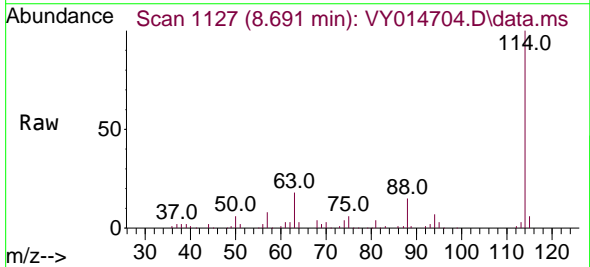


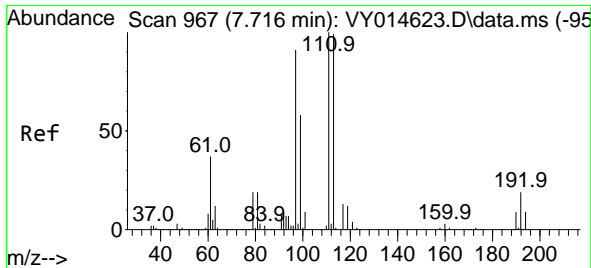
Tgt Ion: 65 Resp: 19017  
 Ion Ratio Lower Upper  
 65 100  
 67 50.4 0.0 101.8



#34  
 1,4-Difluorobenzene  
 Concen: 50.000 ug/l  
 RT: 8.691 min Scan# 1127  
 Delta R.T. 0.006 min  
 Lab File: VY014704.D  
 Acq: 18 Jul 2023 16:16

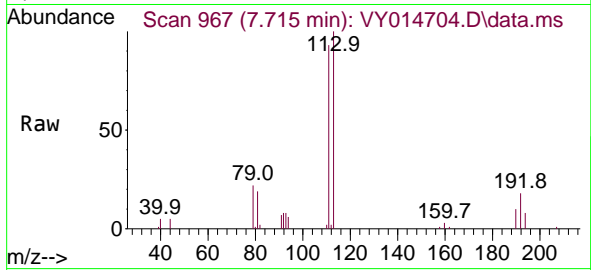
Tgt Ion: 114 Resp: 63494  
 Ion Ratio Lower Upper  
 114 100  
 63 17.5 0.0 42.4  
 88 15.1 0.0 30.6



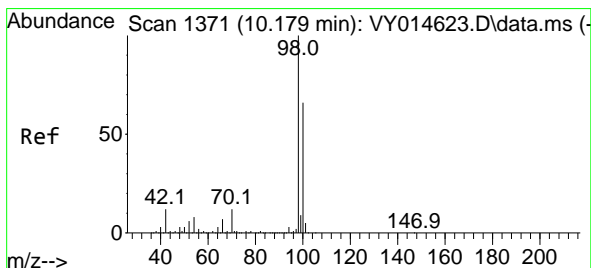
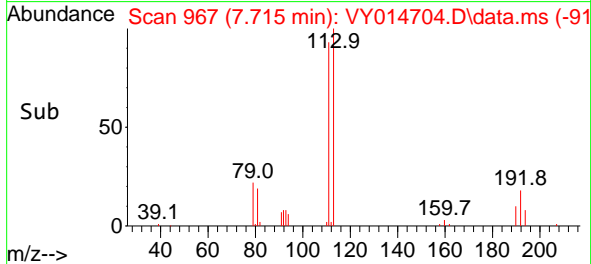
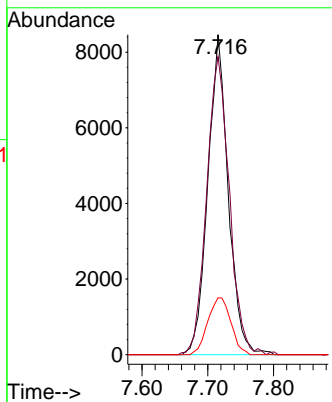


#35  
 Dibromofluoromethane  
 Concen: 45.326 ug/l  
 RT: 7.715 min Scan# 967  
 Delta R.T. -0.001 min  
 Lab File: VY014704.D  
 Acq: 18 Jul 2023 16:16

Instrument : MSVOA\_Y  
 ClientSampleId : YARD-1

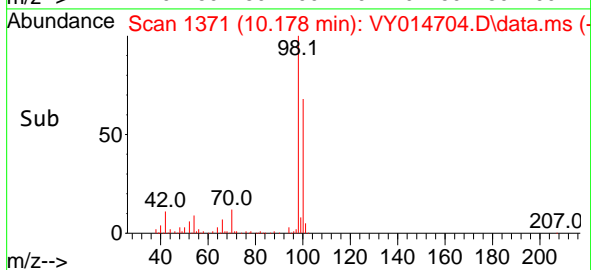
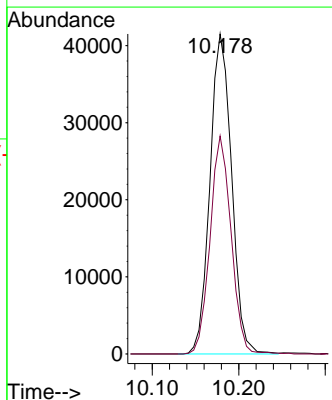
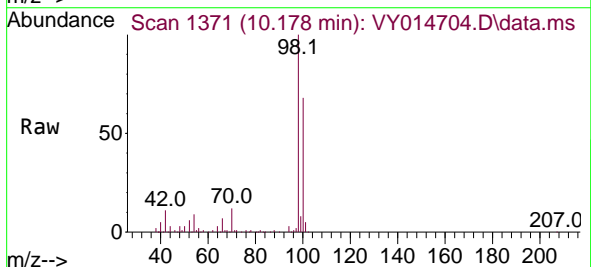


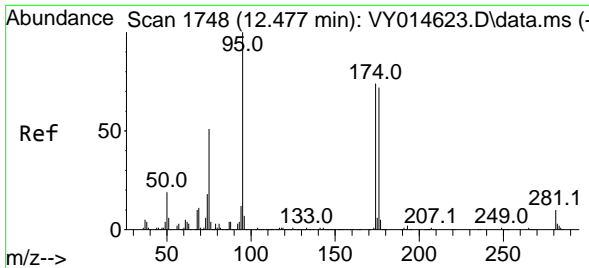
Tgt Ion:113 Resp: 18320  
 Ion Ratio Lower Upper  
 113 100  
 111 103.0 81.3 121.9  
 192 20.0 16.9 25.3



#50  
 Toluene-d8  
 Concen: 48.335 ug/l  
 RT: 10.178 min Scan# 1371  
 Delta R.T. -0.001 min  
 Lab File: VY014704.D  
 Acq: 18 Jul 2023 16:16

Tgt Ion: 98 Resp: 72027  
 Ion Ratio Lower Upper  
 98 100  
 100 66.2 50.1 75.1

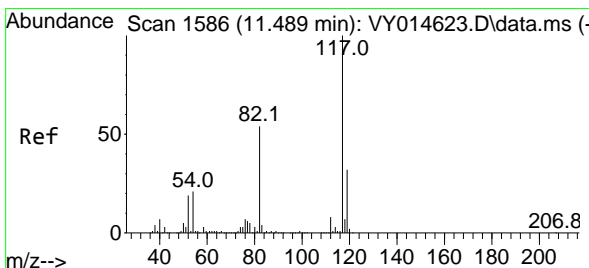
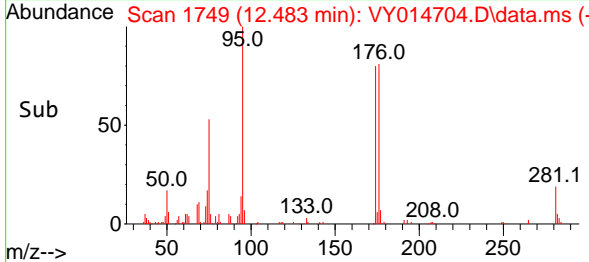
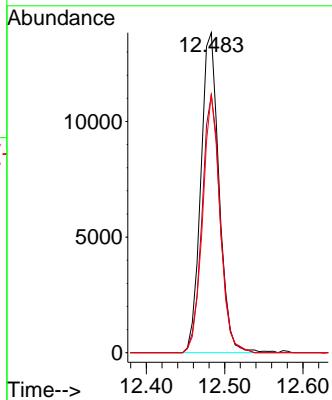
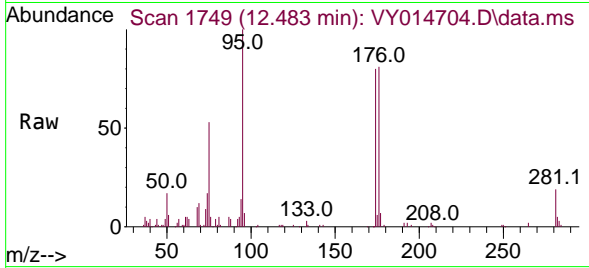




#62  
 4-Bromofluorobenzene  
 Concen: 39.142 ug/l  
 RT: 12.483 min Scan# 11  
 Delta R.T. 0.006 min  
 Lab File: VY014704.D  
 Acq: 18 Jul 2023 16:16

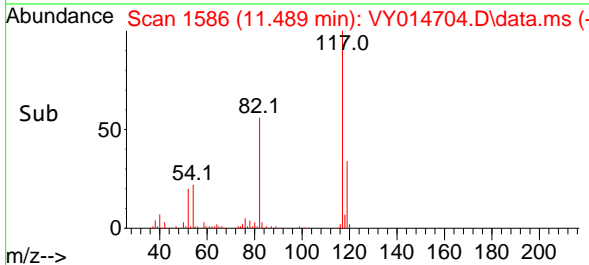
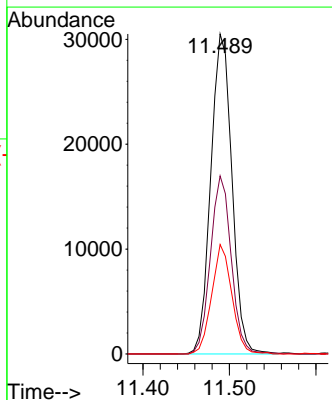
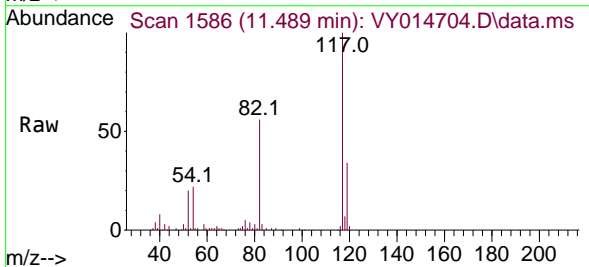
Instrument :  
 MSVOA\_Y  
 ClientSampleId :  
 YARD-1

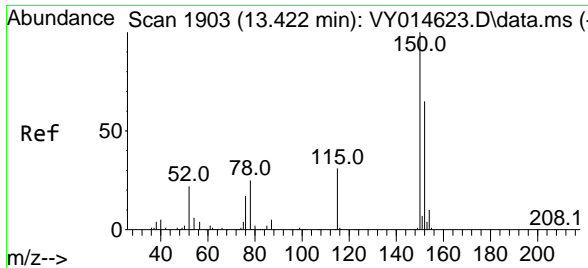
| Tgt Ion | Resp  | Lower | Upper |
|---------|-------|-------|-------|
| 95      | 22365 | 100   |       |
| 174     | 80.1  | 0.0   | 178.2 |
| 176     | 77.1  | 0.0   | 173.8 |



#63  
 Chlorobenzene-d5  
 Concen: 50.000 ug/l  
 RT: 11.489 min Scan# 1586  
 Delta R.T. 0.000 min  
 Lab File: VY014704.D  
 Acq: 18 Jul 2023 16:16

| Tgt Ion | Resp  | Lower | Upper |
|---------|-------|-------|-------|
| 117     | 51806 | 100   |       |
| 82      | 55.6  | 43.4  | 65.0  |
| 119     | 34.2  | 26.3  | 39.5  |





#72  
 1,4-Dichlorobenzene-d4  
 Concen: 50.000 ug/l  
 RT: 13.428 min Scan# 1903  
 Delta R.T. 0.006 min  
 Lab File: VY014704.D  
 Acq: 18 Jul 2023 16:16

Instrument : MSVOA\_Y  
 ClientSampleId : YARD-1

| Tgt Ion | Resp  | Lower | Upper |
|---------|-------|-------|-------|
| 152     | 20431 |       |       |
| 115     | 61.2  | 28.8  | 86.5  |
| 150     | 156.9 | 0.0   | 348.8 |

