

Data Path : Z:\voasrv\HPCHEM1\MSVOA_Y\Data\VY072321\
 Data File : VY005430.D
 Acq On : 23 Jul 2021 20:55
 Operator : SY/MD
 Sample : M3159-03
 Misc : 8.38G/5ML/MSVOA_Y/SOIL
 ALS Vial : 12 Sample Multiplier: 1

Instrument :
 MSVOA_Y
 ClientSampleId :
 20210731-58

Quant Time: Jul 24 03:03:52 2021
 Quant Method : Z:\voasrv\HPCHEM1\MSVOA_Y\methods\82Y072221S.M
 Quant Title : SW846 8260
 QLast Update : Fri Jul 23 06:20:14 2021
 Response via : Initial Calibration

Compound	R.T.	QIon	Response	Conc	Units	Dev(Min)

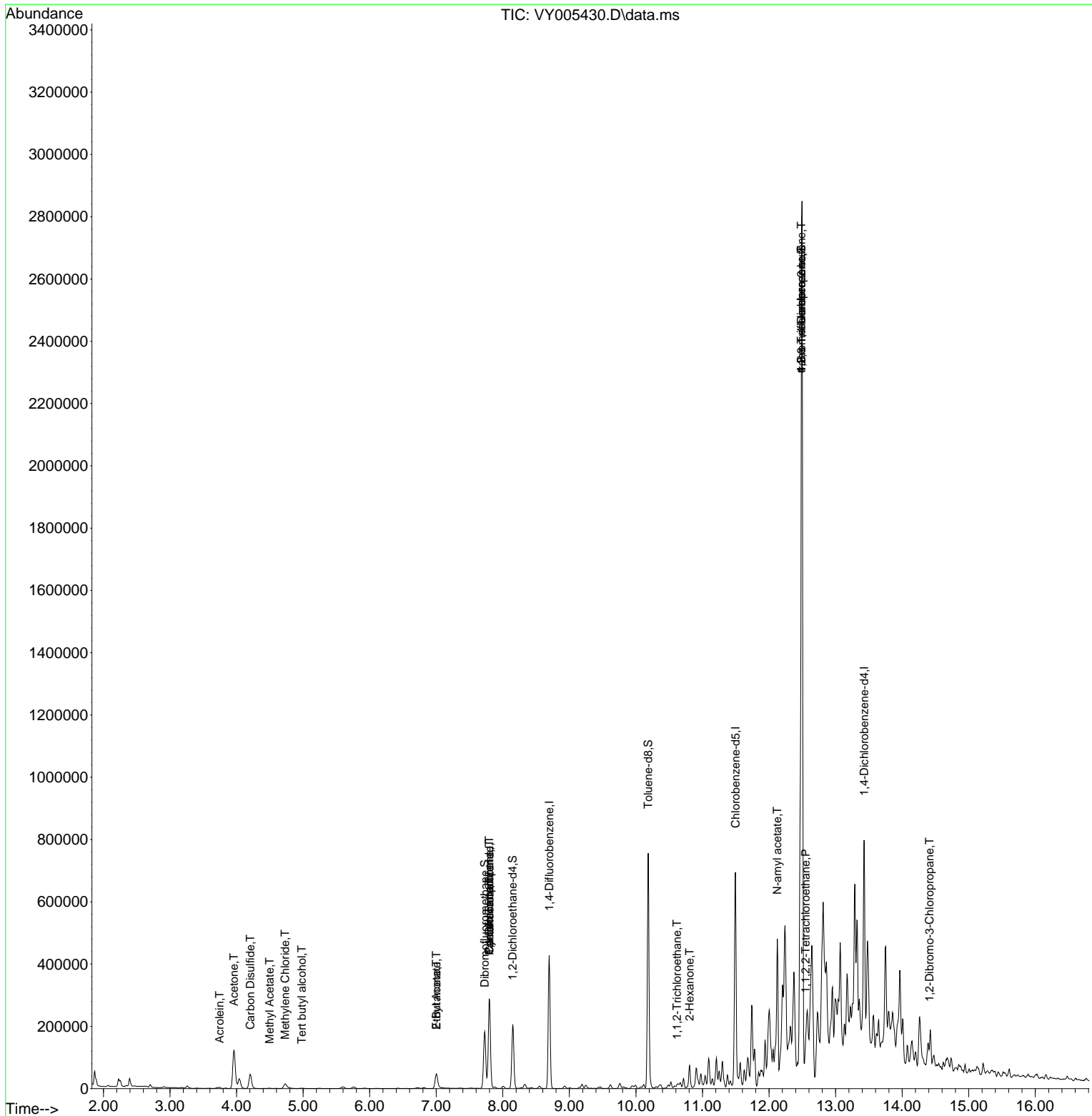
Internal Standards						
1) Pentafluorobenzene	7.801	168	231882	50.000	ug/l	0.00
34) 1,4-Difluorobenzene	8.697	114	356384	50.000	ug/l	0.00
63) Chlorobenzene-d5	11.496	117	356419	50.000	ug/l	0.00
72) 1,4-Dichlorobenzene-d4	13.428	152	165605	50.000	ug/l	0.00
System Monitoring Compounds						
33) 1,2-Dichloroethane-d4	8.149	65	162171	65.463	ug/l	0.00
Spiked Amount	50.000	Range	50 - 163	Recovery	=	130.920%
35) Dibromofluoromethane	7.728	113	124714	60.606	ug/l	0.00
Spiked Amount	50.000	Range	54 - 147	Recovery	=	121.220%
50) Toluene-d8	10.185	98	457534	52.459	ug/l	0.00
Spiked Amount	50.000	Range	49 - 140	Recovery	=	104.920%
62) 4-Bromofluorobenzene	12.483	95	175434	60.945	ug/l	0.00
Spiked Amount	50.000	Range	25 - 144	Recovery	=	121.900%
Target Compounds						
						Qvalue
11) Tert butyl alcohol	4.979	59	2542	10.862	ug/l #	93
13) Acrolein	3.747	56	4335	20.229	ug/l #	40
16) Acetone	3.960	43	220423	389.620	ug/l	100
17) Carbon Disulfide	4.204	76	93566	12.763	ug/l	100
18) Methyl Acetate	4.497	43	2406	1.513	ug/l #	90
20) Methylene Chloride	4.729	84	11182	2.360	ug/l	93
25) 2-Butanone	7.003	43	72285	85.321	ug/l	94
31) Cyclohexane	7.795	56	6153	1.455	ug/l #	40
36) 1,1-Dichloropropene	7.795	75	17093	4.960	ug/l #	49
37) Ethyl Acetate	7.003	43	72285	34.460	ug/l #	70
38) Carbon Tetrachloride	7.795	117	20760	5.513	ug/l #	15
55) 1,1,2-Trichloroethane	10.618	97	4193	2.177	ug/l #	24
59) 2-Hexanone	10.807	43	27337	19.341	ug/l #	30
74) N-amyl acetate	12.124	43	102503	29.481	ug/l #	61
75) 1,1,2,2-Tetrachloroethane	12.550	83	5127	2.351	ug/l #	26
76) 1,2,3-Trichloropropane	12.483	75	104668	64.233	ug/l #	100
81) trans-1,4-Dichloro-2-b...	12.483	75	104668	124.722	ug/l #	13
92) 1,2-Dibromo-3-Chloropr...	14.410	75	989	2.339	ug/l #	3

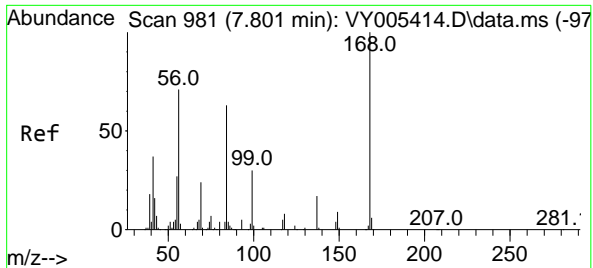
(#) = qualifier out of range (m) = manual integration (+) = signals summed

Data Path : Z:\voasrv\HPCHEM1\MSVOA_Y\Data\VY072321\
 Data File : VY005430.D
 Acq On : 23 Jul 2021 20:55
 Operator : SY/MD
 Sample : M3159-03
 Misc : 8.38G/5ML/MSVOA_Y/SOIL
 ALS Vial : 12 Sample Multiplier: 1

Instrument :
 MSVOA_Y
 ClientSampleId :
 20210731-58

Quant Time: Jul 24 03:03:52 2021
 Quant Method : Z:\voasrv\HPCHEM1\MSVOA_Y\methods\82Y072221S.M
 Quant Title : SW846 8260
 QLast Update : Fri Jul 23 06:20:14 2021
 Response via : Initial Calibration

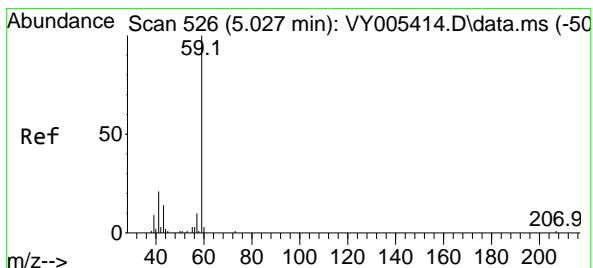
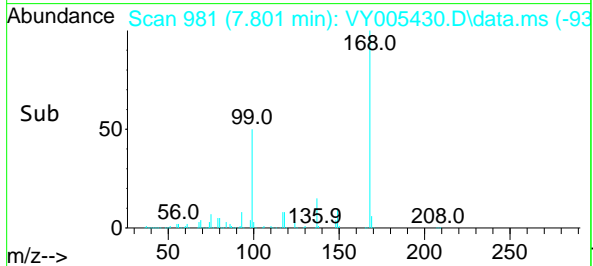
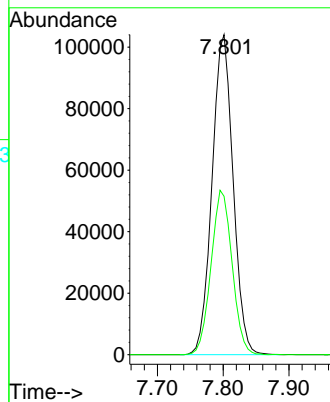
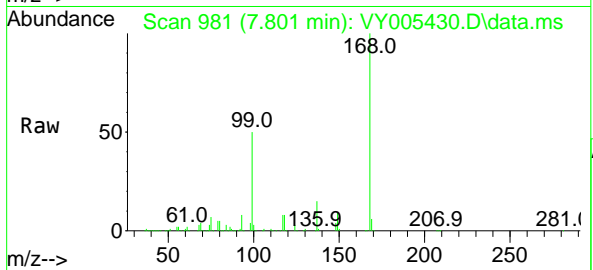




#1
 Pentafluorobenzene
 Concen: 50.000 ug/l
 RT: 7.801 min Scan# 981
 Delta R.T. 0.000 min
 Lab File: VY005430.D
 Acq: 23 Jul 2021 20:55

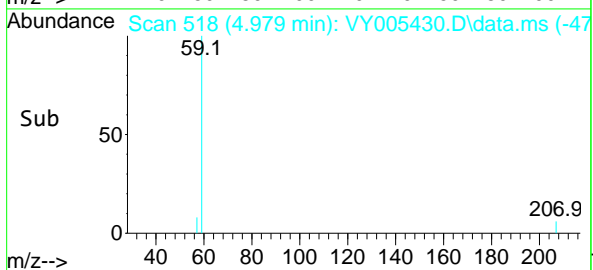
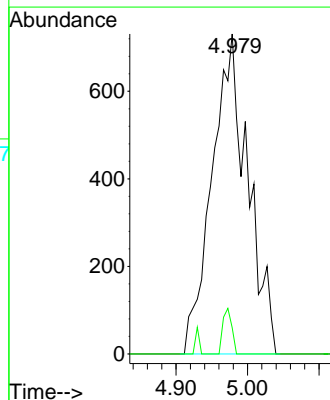
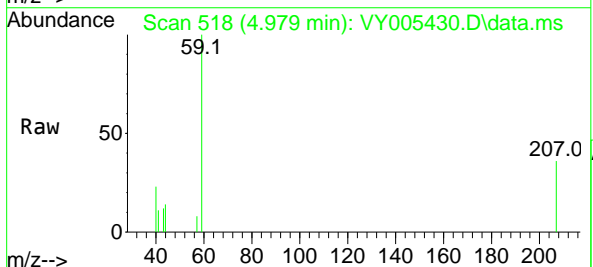
Instrument :
 MSVOA_Y
 ClientSampleId :
 20210731-58

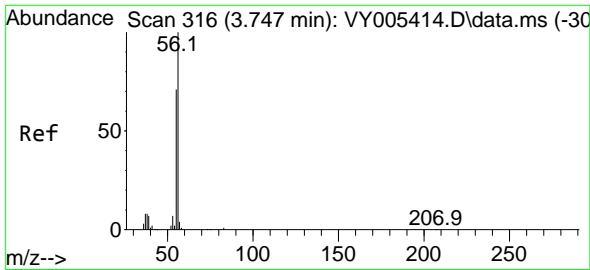
Tgt Ion:168 Resp: 231882
 Ion Ratio Lower Upper
 168 100
 99 49.5 39.8 59.6



#11
 Tert butyl alcohol
 Concen: 10.862 ug/l
 RT: 4.979 min Scan# 518
 Delta R.T. -0.049 min
 Lab File: VY005430.D
 Acq: 23 Jul 2021 20:55

Tgt Ion: 59 Resp: 2542
 Ion Ratio Lower Upper
 59 100
 57 3.6 4.7 7.1#

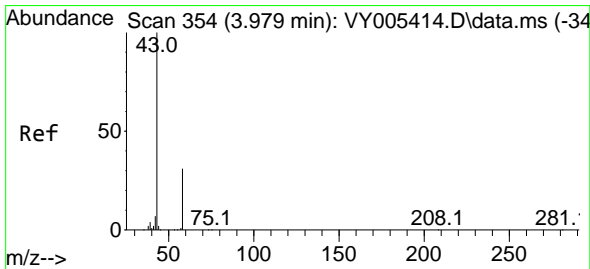
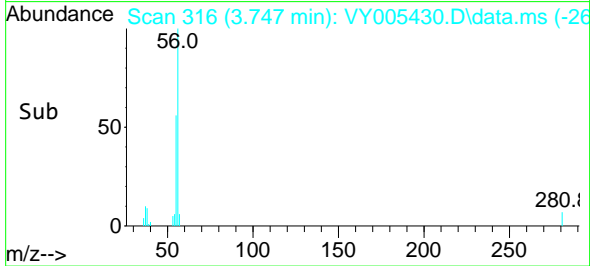
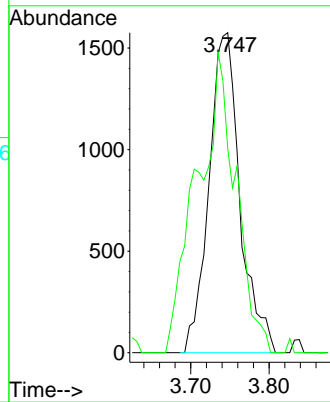
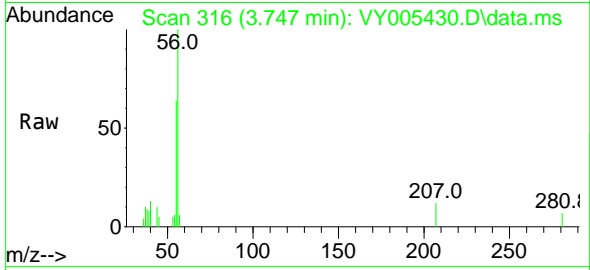




#13
 Acrolein
 Concen: 20.229 ug/l
 RT: 3.747 min Scan# 316
 Delta R.T. 0.000 min
 Lab File: VY005430.D
 Acq: 23 Jul 2021 20:55

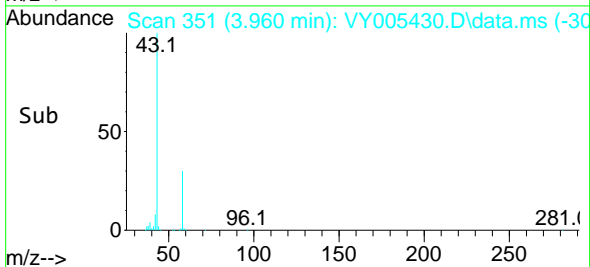
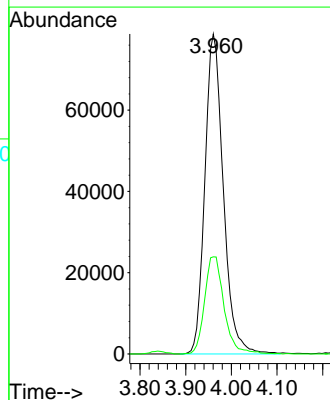
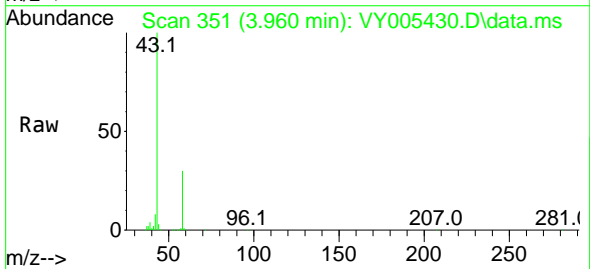
Instrument :
 MSVOA_Y
 ClientSampled :
 20210731-58

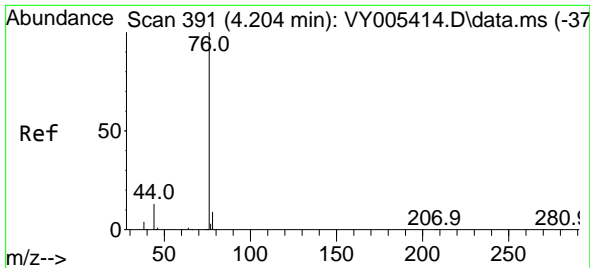
Tgt Ion: 56 Resp: 4335
 Ion Ratio Lower Upper
 56 100
 55 117.5 55.2 82.8#



#16
 Acetone
 Concen: 389.620 ug/l
 RT: 3.960 min Scan# 351
 Delta R.T. -0.018 min
 Lab File: VY005430.D
 Acq: 23 Jul 2021 20:55

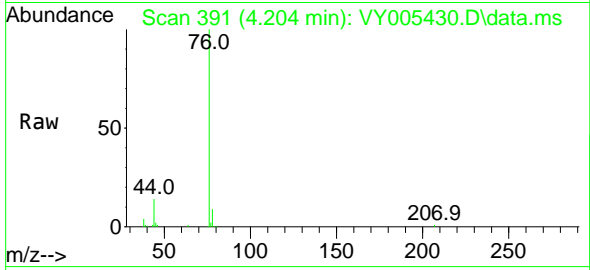
Tgt Ion: 43 Resp: 220423
 Ion Ratio Lower Upper
 43 100
 58 30.4 24.5 36.7



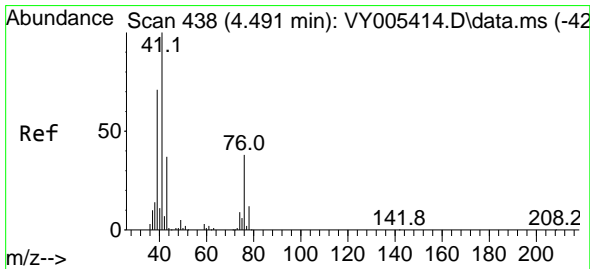
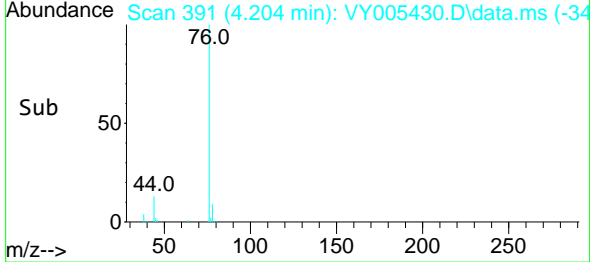
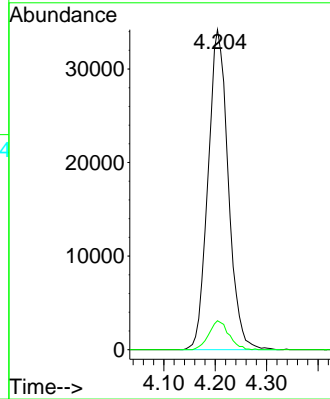


#17
 Carbon Disulfide
 Concen: 12.763 ug/l
 RT: 4.204 min Scan# 391
 Delta R.T. 0.000 min
 Lab File: VY005430.D
 Acq: 23 Jul 2021 20:55

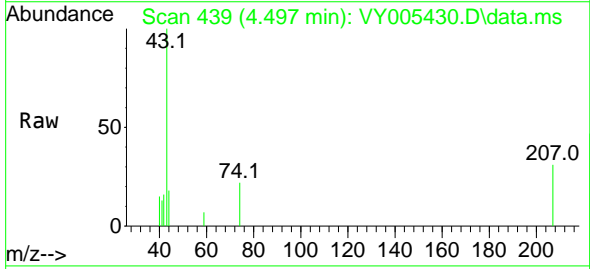
Instrument :
 MSVOA_Y
 ClientSampled :
 20210731-58



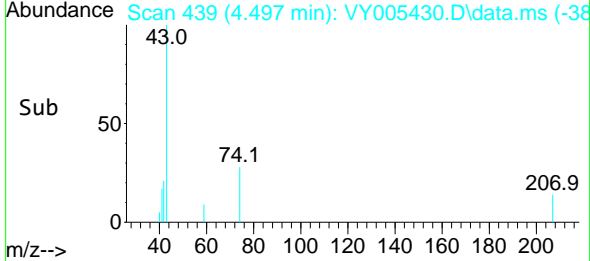
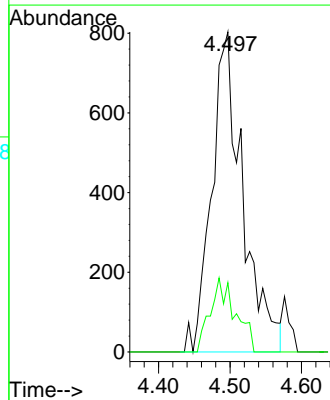
Tgt Ion: 76 Resp: 93566
 Ion Ratio Lower Upper
 76 100
 78 9.0 7.3 10.9

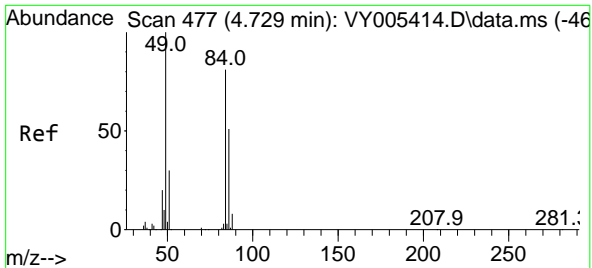


#18
 Methyl Acetate
 Concen: 1.513 ug/l
 RT: 4.497 min Scan# 439
 Delta R.T. 0.006 min
 Lab File: VY005430.D
 Acq: 23 Jul 2021 20:55



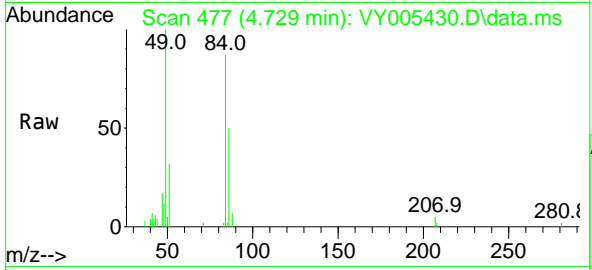
Tgt Ion: 43 Resp: 2406
 Ion Ratio Lower Upper
 43 100
 74 19.0 19.2 28.8#





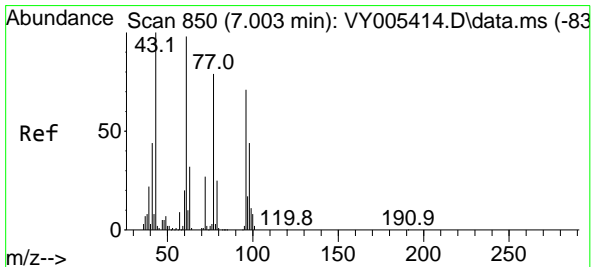
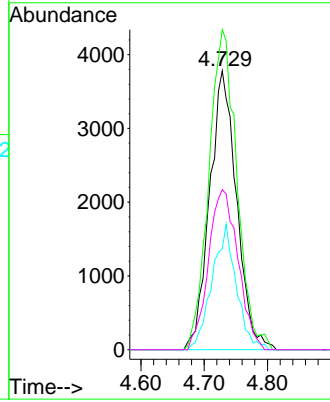
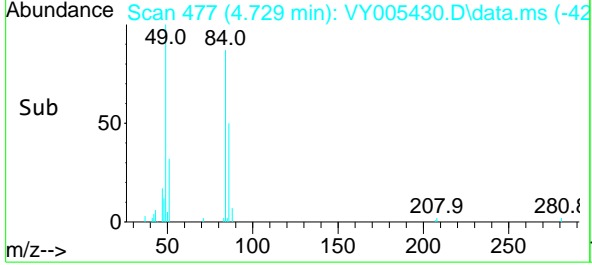
#20
Methylene Chloride
Concen: 2.360 ug/l
RT: 4.729 min Scan# 477
Delta R.T. -0.000 min
Lab File: VY005430.D
Acq: 23 Jul 2021 20:55

Instrument :
MSVOA_Y
ClientSampled :
20210731-58

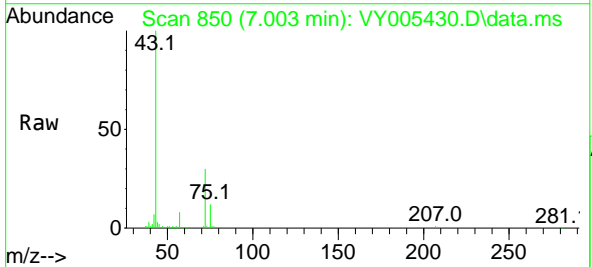


Tgt Ion: 84 Resp: 11182

Ion	Ratio	Lower	Upper
84	100		
49	114.7	98.9	148.3
51	36.2	30.0	45.0
86	57.4	50.4	75.6

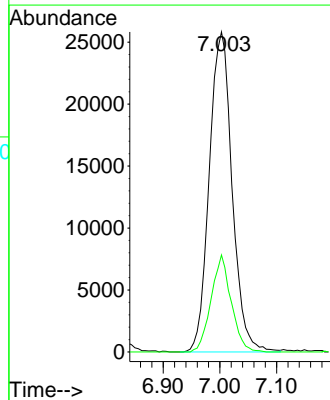
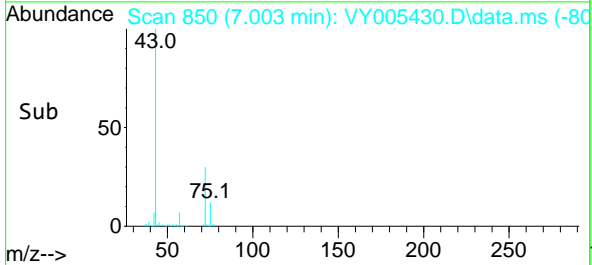


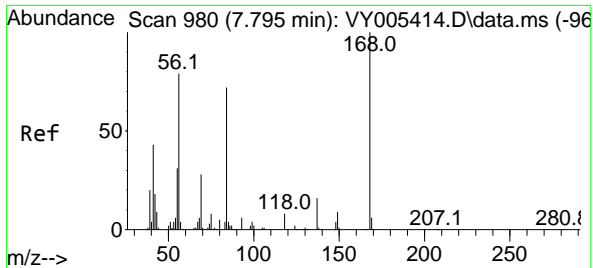
#25
2-Butanone
Concen: 85.321 ug/l
RT: 7.003 min Scan# 850
Delta R.T. 0.000 min
Lab File: VY005430.D
Acq: 23 Jul 2021 20:55



Tgt Ion: 43 Resp: 72285

Ion	Ratio	Lower	Upper
43	100		
72	30.3	21.9	32.9

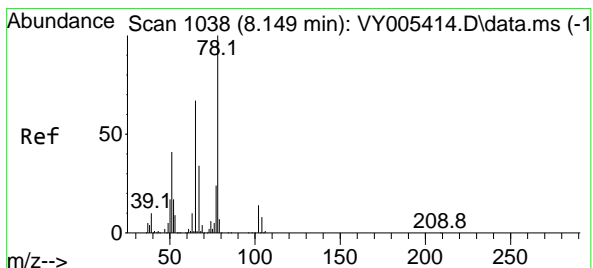
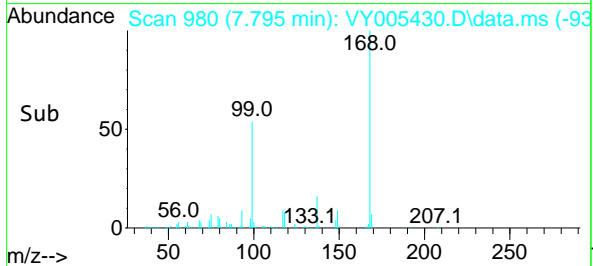
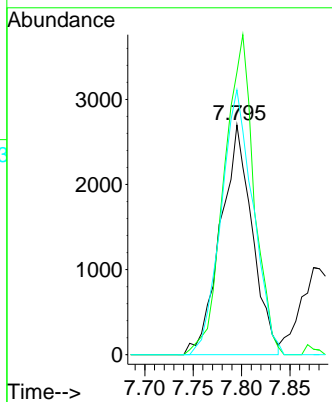
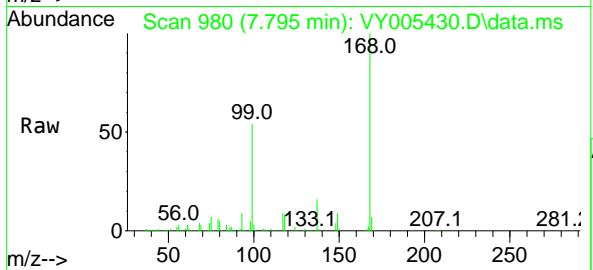




#31
 Cyclohexane
 Concen: 1.455 ug/l
 RT: 7.795 min Scan# 980
 Delta R.T. 0.000 min
 Lab File: VY005430.D
 Acq: 23 Jul 2021 20:55

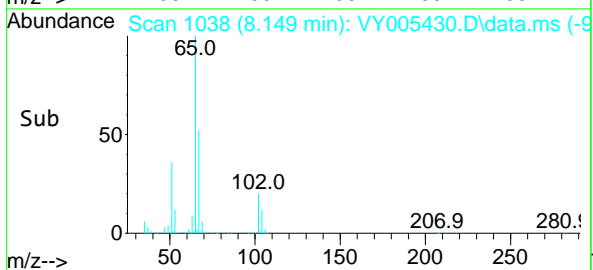
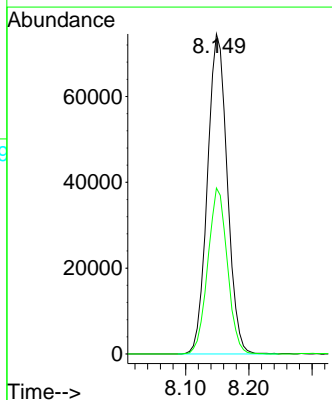
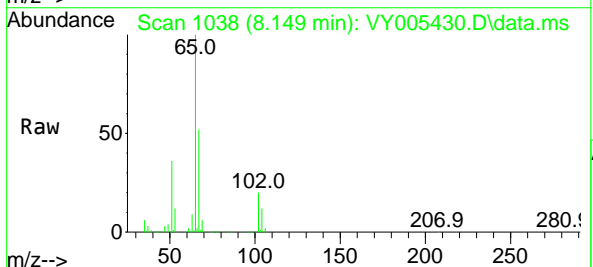
Instrument :
 MSVOA_Y
ClientSampled :
 20210731-58

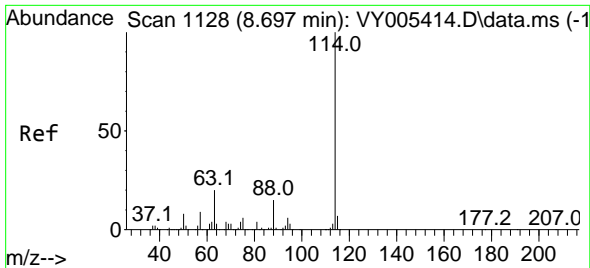
Tgt Ion	Resp	Lower	Upper
56	100		
69	122.9	28.7	43.1#
84	115.3	73.0	109.6#



#33
 1,2-Dichloroethane-d4
 Concen: 65.463 ug/l
 RT: 8.149 min Scan# 1038
 Delta R.T. 0.000 min
 Lab File: VY005430.D
 Acq: 23 Jul 2021 20:55

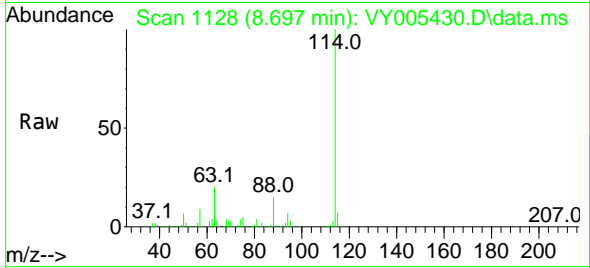
Tgt Ion	Resp	Lower	Upper
65	100		
67	51.1	0.0	102.2





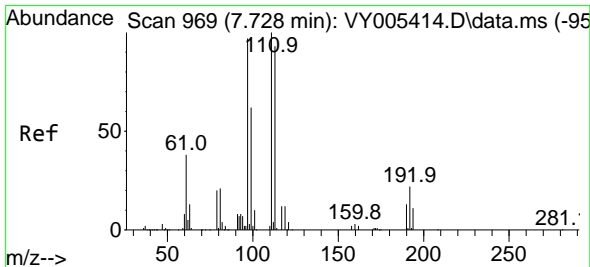
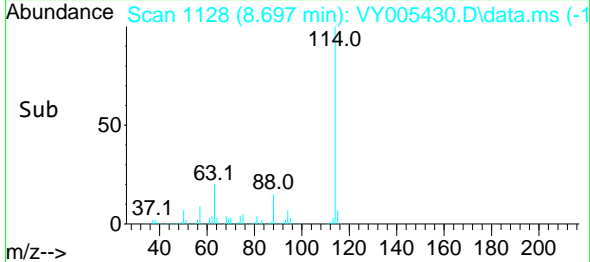
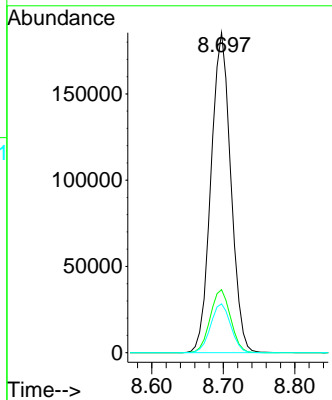
#34
 1,4-Difluorobenzene
 Concen: 50.000 ug/l
 RT: 8.697 min Scan# 1128
 Delta R.T. 0.000 min
 Lab File: VY005430.D
 Acq: 23 Jul 2021 20:55

Instrument :
 MSVOA_Y
 ClientSampled :
 20210731-58

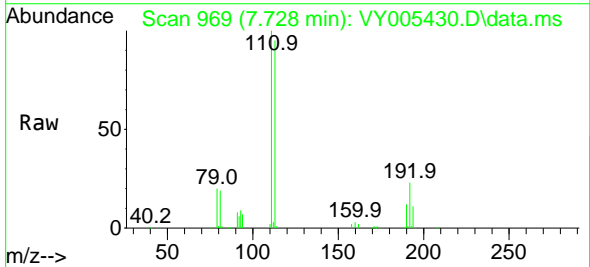


Tgt Ion:114 Resp: 356384

Ion	Ratio	Lower	Upper
114	100		
63	19.7	0.0	39.0
88	15.3	0.0	30.8

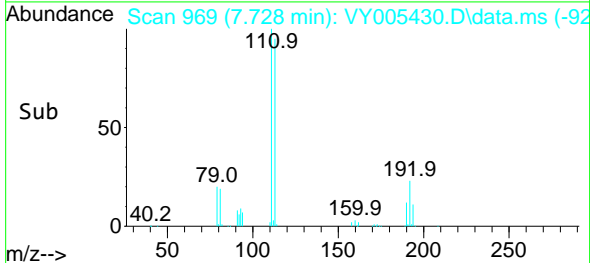
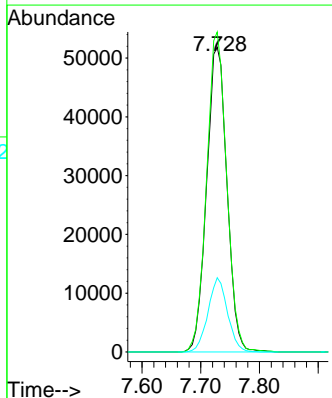


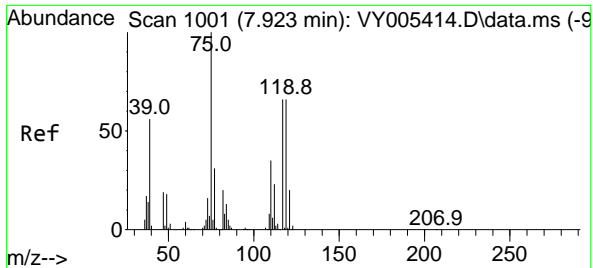
#35
 Dibromofluoromethane
 Concen: 60.606 ug/l
 RT: 7.728 min Scan# 969
 Delta R.T. 0.000 min
 Lab File: VY005430.D
 Acq: 23 Jul 2021 20:55



Tgt Ion:113 Resp: 124714

Ion	Ratio	Lower	Upper
113	100		
111	103.3	82.6	124.0
192	23.3	18.9	28.3

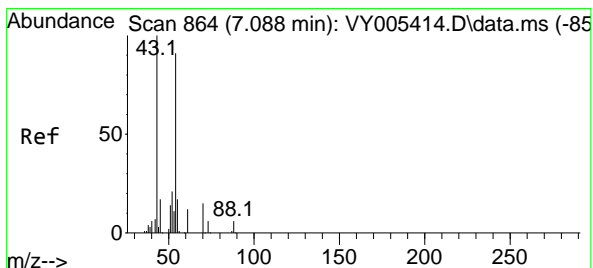
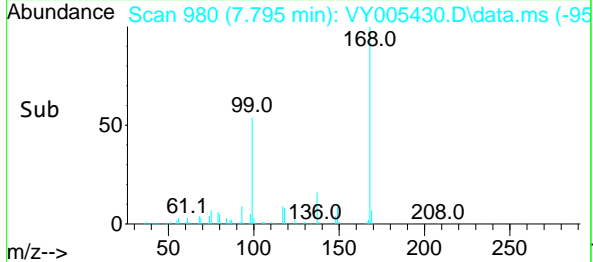
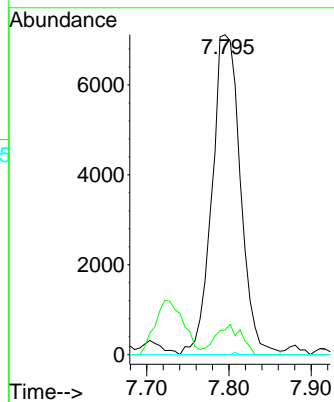
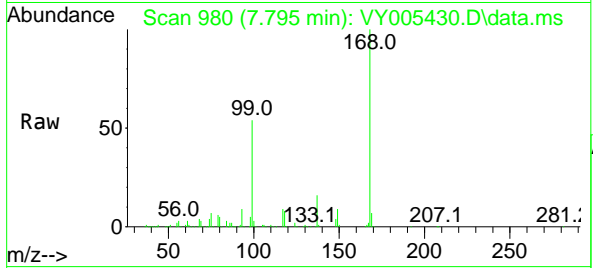




#36
 1,1-Dichloropropene
 Concen: 4.960 ug/l
 RT: 7.795 min Scan# 980
 Delta R.T. -0.128 min
 Lab File: VY005430.D
 Acq: 23 Jul 2021 20:55

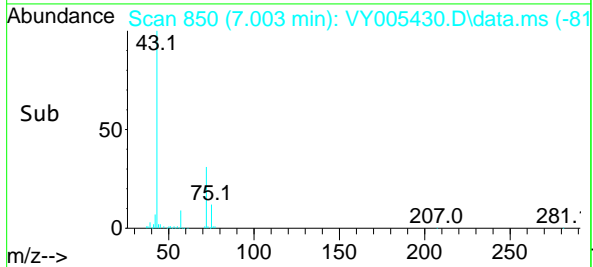
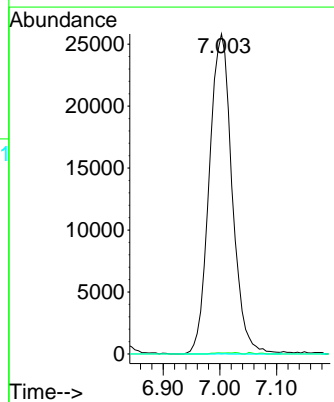
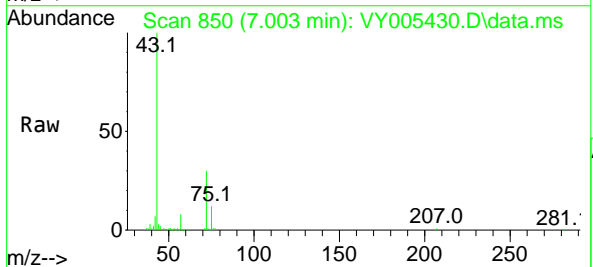
Instrument :
 MSVOA_Y
 ClientSampled :
 20210731-58

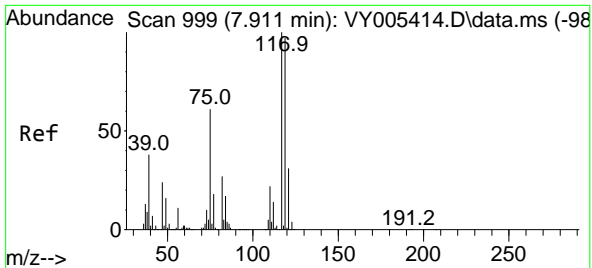
Tgt Ion	Resp	Lower	Upper
75	17093		
110	8.6	17.6	52.9#
77	0.1	24.6	37.0#



#37
 Ethyl Acetate
 Concen: 34.460 ug/l
 RT: 7.003 min Scan# 850
 Delta R.T. -0.085 min
 Lab File: VY005430.D
 Acq: 23 Jul 2021 20:55

Tgt Ion	Resp	Lower	Upper
43	72285		
61	0.2	10.3	15.5#
70	0.1	7.9	11.9#

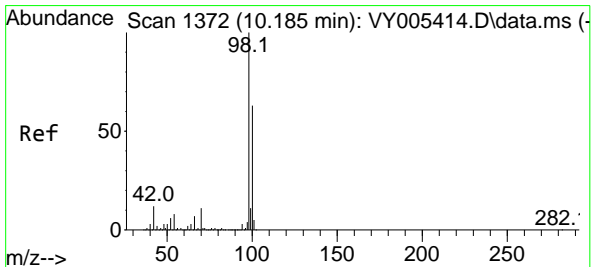
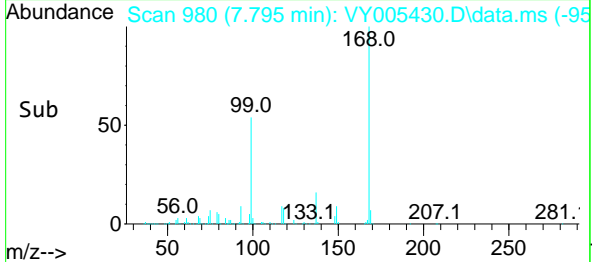
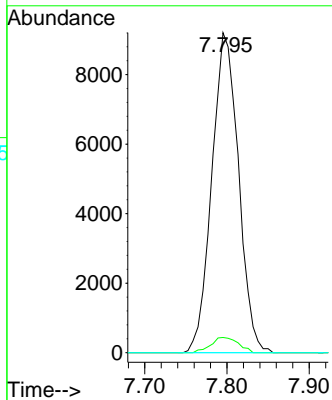
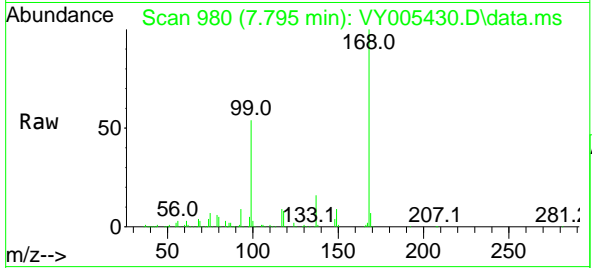




#38
 Carbon Tetrachloride
 Concen: 5.513 ug/l
 RT: 7.795 min Scan# 980
 Delta R.T. -0.116 min
 Lab File: VY005430.D
 Acq: 23 Jul 2021 20:55

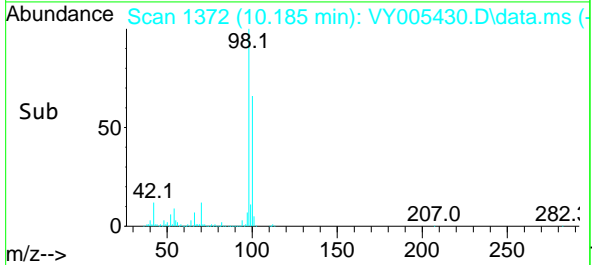
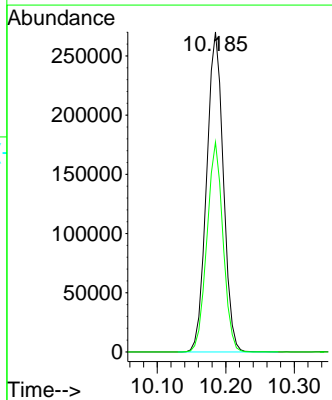
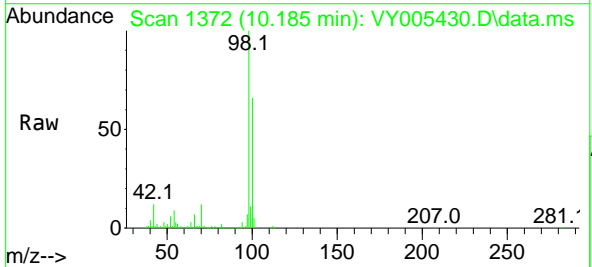
Instrument :
 MSVOA_Y
 ClientSampled :
 20210731-58

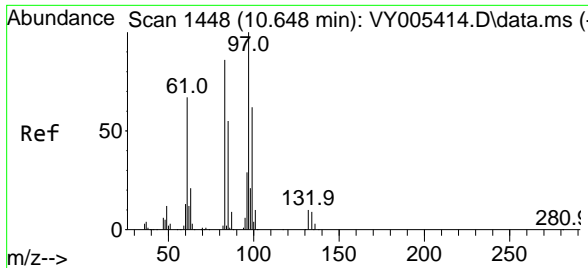
Tgt Ion	Resp	Lower	Upper
117	100		
119	4.7	77.2	115.8#
121	0.0	25.1	37.7#



#50
 Toluene-d8
 Concen: 52.459 ug/l
 RT: 10.185 min Scan# 1372
 Delta R.T. 0.000 min
 Lab File: VY005430.D
 Acq: 23 Jul 2021 20:55

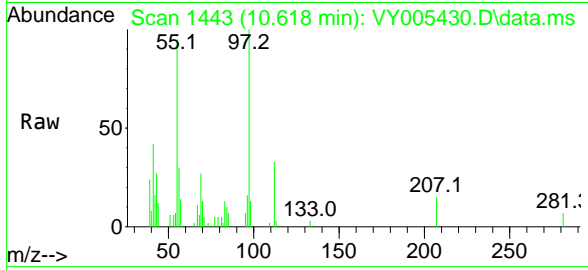
Tgt Ion	Resp	Lower	Upper
98	100		
100	63.1	50.9	76.3





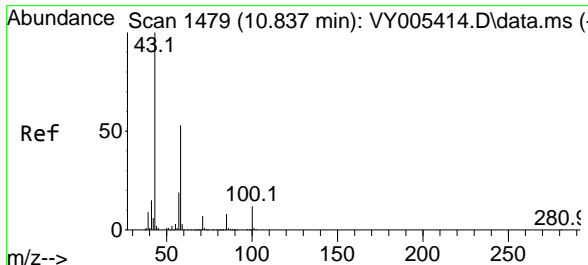
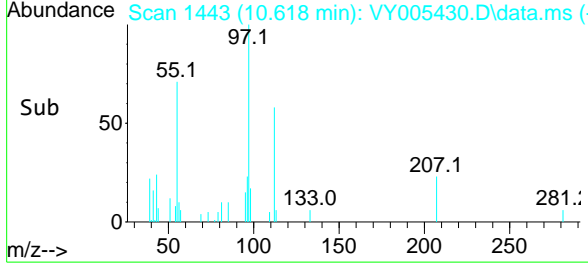
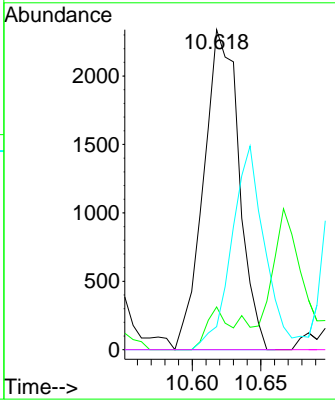
#55
 1,1,2-Trichloroethane
 Concen: 2.177 ug/l
 RT: 10.618 min Scan# 1443
 Delta R.T. -0.030 min
 Lab File: VY005430.D
 Acq: 23 Jul 2021 20:55

Instrument :
 MSVOA_Y
ClientSampled :
 20210731-58

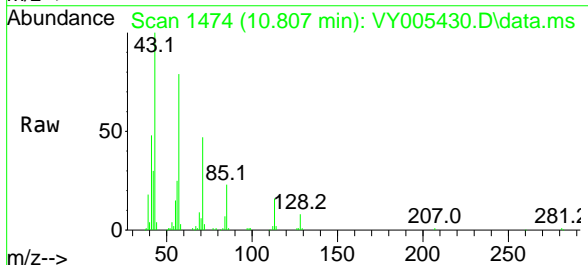


Tgt Ion: 97 Resp: 4193

Ion	Ratio	Lower	Upper
97	100		
83	13.3	69.0	103.4#
85	7.2	44.2	66.2#
99	0.0	49.6	74.4#

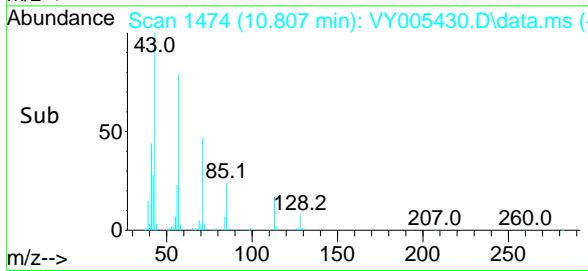
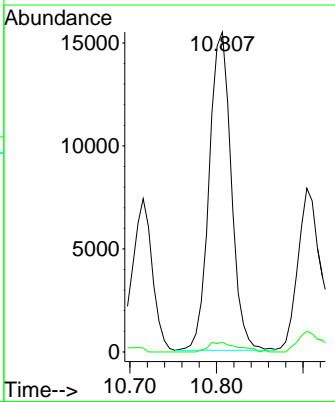


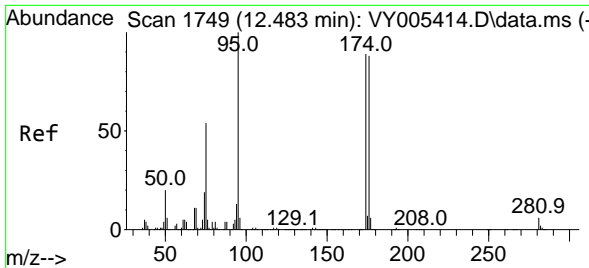
#59
 2-Hexanone
 Concen: 19.341 ug/l
 RT: 10.807 min Scan# 1474
 Delta R.T. -0.030 min
 Lab File: VY005430.D
 Acq: 23 Jul 2021 20:55



Tgt Ion: 43 Resp: 27337

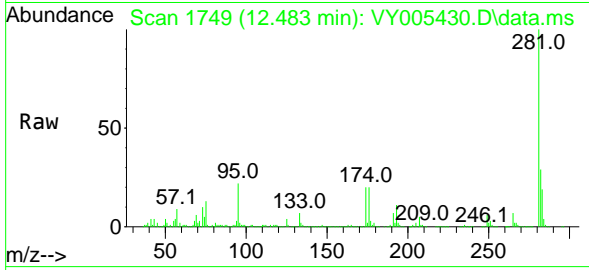
Ion	Ratio	Lower	Upper
43	100		
58	4.1	27.1	81.2#





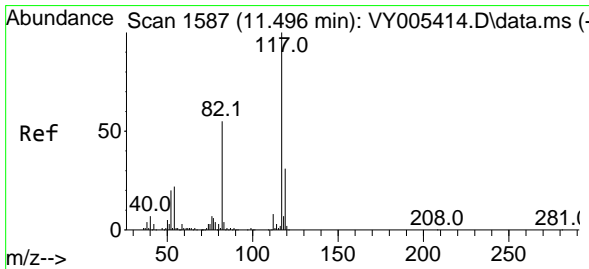
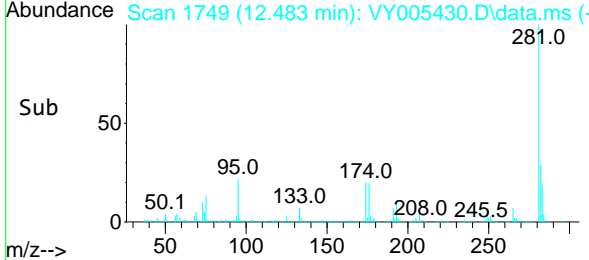
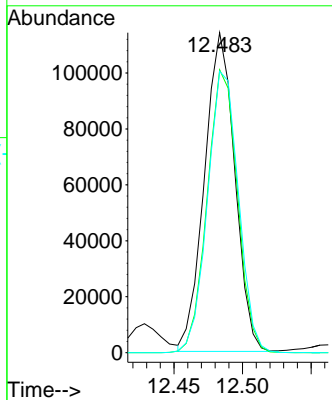
#62
 4-Bromofluorobenzene
 Concen: 60.945 ug/l
 RT: 12.483 min Scan# 1749
 Delta R.T. 0.000 min
 Lab File: VY005430.D
 Acq: 23 Jul 2021 20:55

Instrument :
 MSVOA_Y
ClientSampled :
 20210731-58

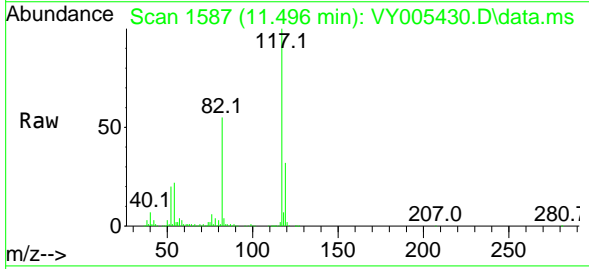


Tgt Ion: 95 Resp: 175434

Ion	Ratio	Lower	Upper
95	100		
174	88.4	0.0	186.6
176	90.0	0.0	182.4

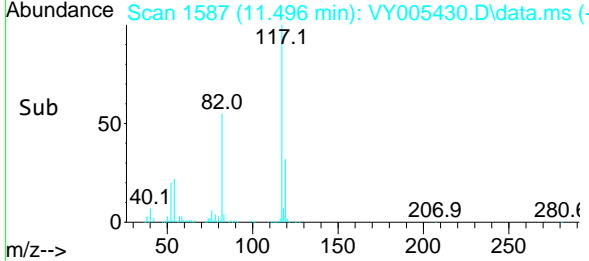
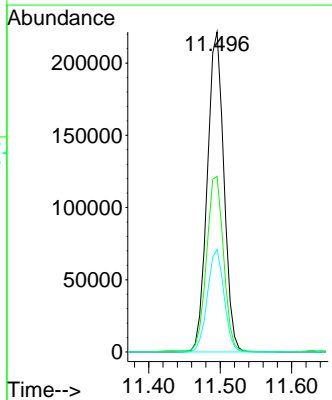


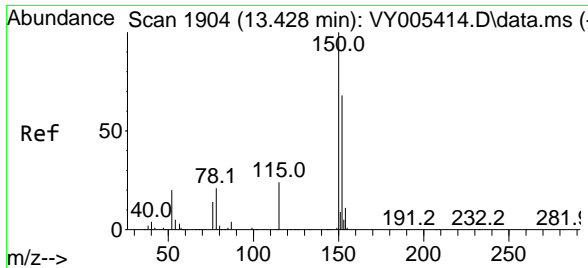
#63
 Chlorobenzene-d5
 Concen: 50.000 ug/l
 RT: 11.496 min Scan# 1587
 Delta R.T. 0.000 min
 Lab File: VY005430.D
 Acq: 23 Jul 2021 20:55



Tgt Ion: 117 Resp: 356419

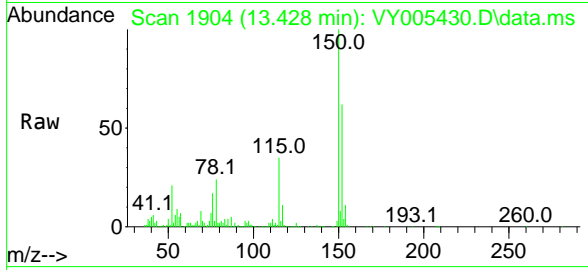
Ion	Ratio	Lower	Upper
117	100		
82	54.7	43.8	65.6
119	32.0	24.8	37.2





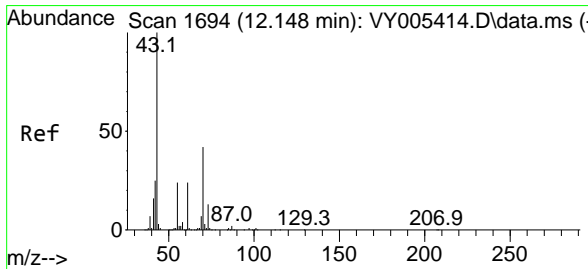
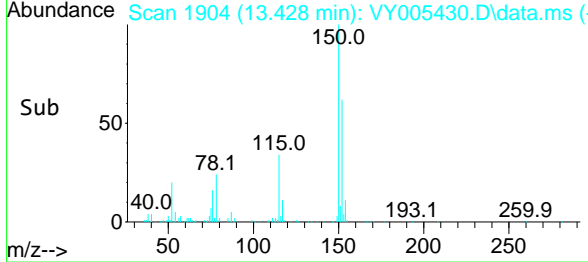
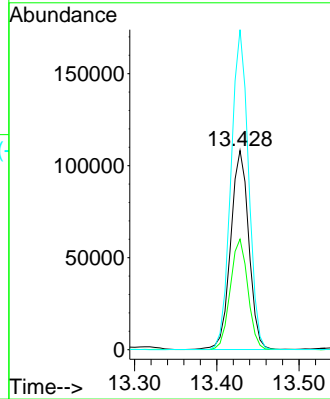
#72
 1,4-Dichlorobenzene-d4
 Concen: 50.000 ug/l
 RT: 13.428 min Scan# 1904
 Delta R.T. 0.000 min
 Lab File: VY005430.D
 Acq: 23 Jul 2021 20:55

Instrument :
 MSVOA_Y
 ClientSampled :
 20210731-58

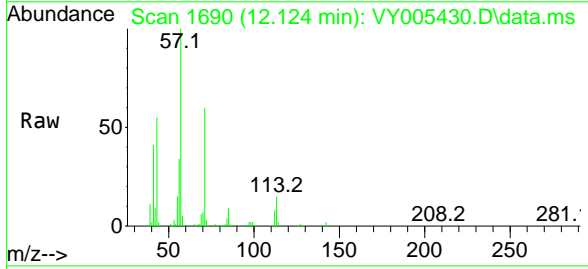


Tgt Ion:152 Resp: 165605

Ion	Ratio	Lower	Upper
152	100		
115	53.8	27.7	83.1
150	155.3	0.0	349.6

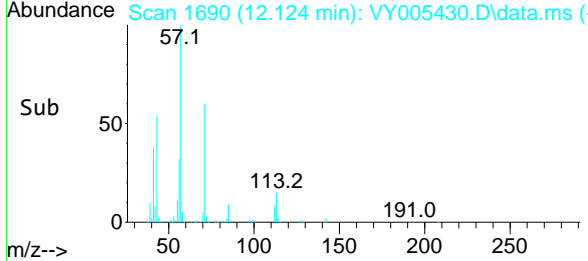
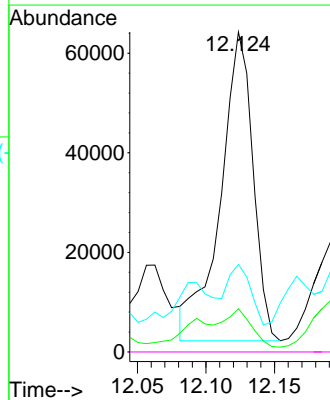


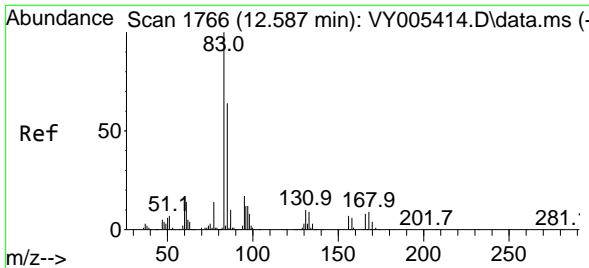
#74
 N-amy1 acetate
 Concen: 29.481 ug/l
 RT: 12.124 min Scan# 1690
 Delta R.T. -0.024 min
 Lab File: VY005430.D
 Acq: 23 Jul 2021 20:55



Tgt Ion: 43 Resp: 102503

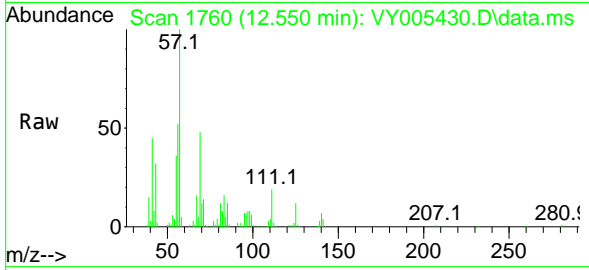
Ion	Ratio	Lower	Upper
43	100		
70	10.3	32.9	49.3#
55	17.1	19.1	28.7#
61	0.0	18.8	28.2#



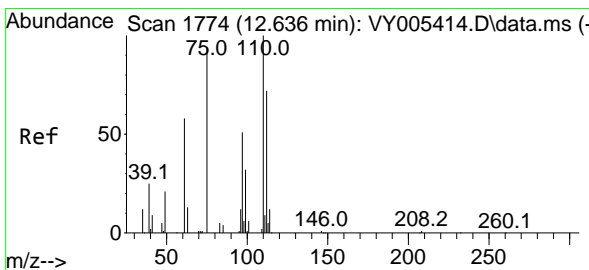
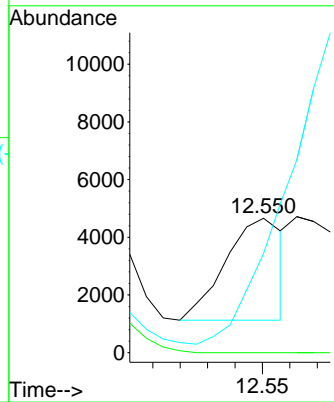
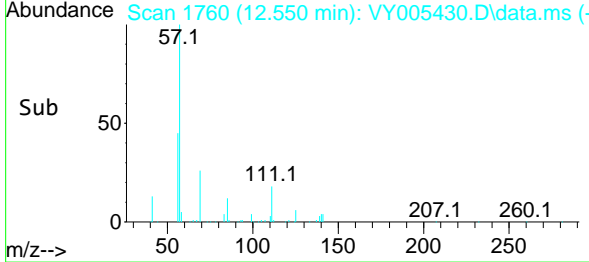


#75
 1,1,2,2-Tetrachloroethane
 Concen: 2.351 ug/l
 RT: 12.550 min Scan# 1760
 Delta R.T. -0.036 min
 Lab File: VY005430.D
 Acq: 23 Jul 2021 20:55

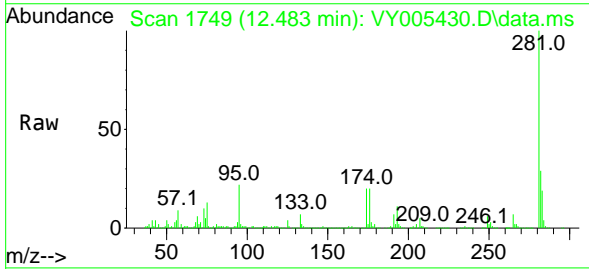
Instrument :
 MSVOA_Y
ClientSampled :
 20210731-58



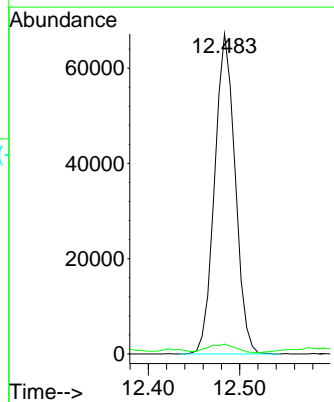
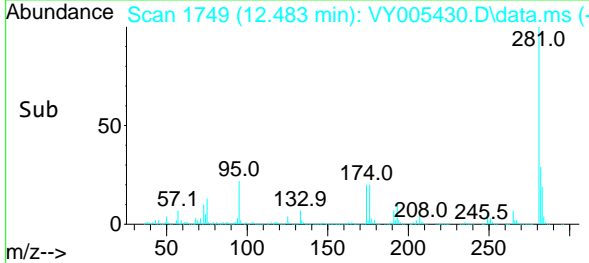
Tgt Ion	Resp	Lower	Upper
83	5127	100	
131	0.0	5.5	16.7#
85	0.0	31.9	95.9#

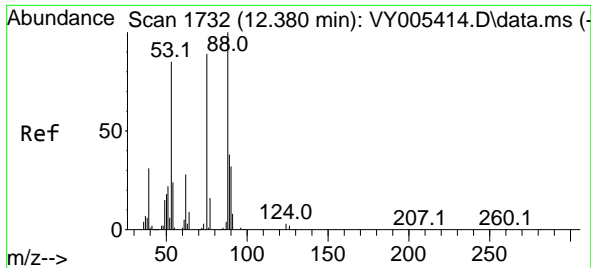


#76
 1,2,3-Trichloropropane
 Concen: 64.233 ug/l
 RT: 12.483 min Scan# 1749
 Delta R.T. -0.152 min
 Lab File: VY005430.D
 Acq: 23 Jul 2021 20:55



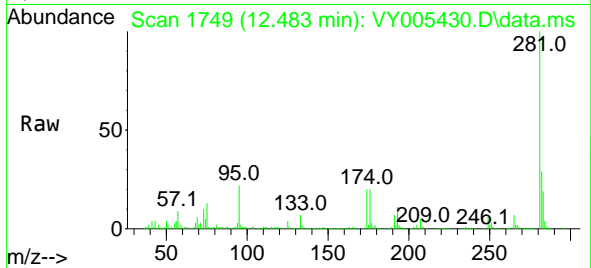
Tgt Ion	Resp	Lower	Upper
75	104668	100	
77	3.7	0.0	0.0#



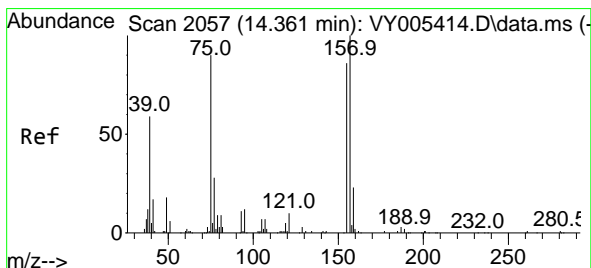
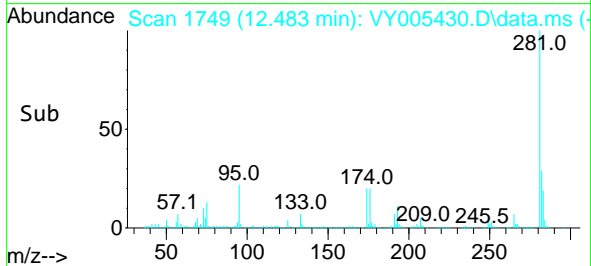
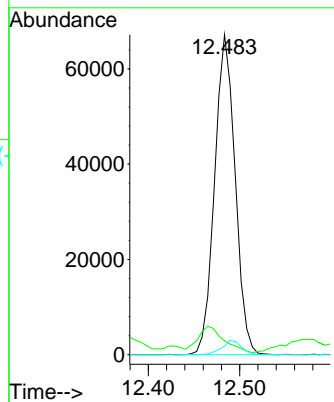


#81
 trans-1,4-Dichloro-2-butene
 Concen: 124.722 ug/l
 RT: 12.483 min Scan# 1749
 Delta R.T. 0.104 min
 Lab File: VY005430.D
 Acq: 23 Jul 2021 20:55

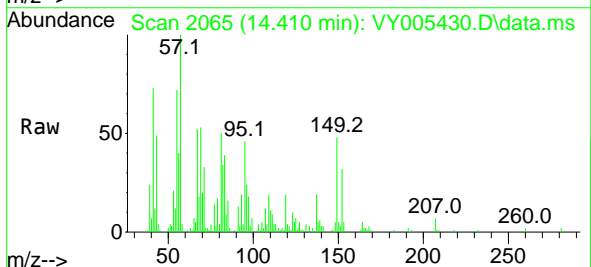
Instrument :
 MSVOA_Y
 ClientSampleId :
 20210731-58



Tgt Ion: 75 Resp: 104668
 Ion Ratio Lower Upper
 75 100
 53 0.0 76.1 114.1#
 89 4.2 36.9 55.3#



#92
 1,2-Dibromo-3-Chloropropane
 Concen: 2.339 ug/l
 RT: 14.410 min Scan# 2065
 Delta R.T. 0.049 min
 Lab File: VY005430.D
 Acq: 23 Jul 2021 20:55



Tgt Ion: 75 Resp: 989
 Ion Ratio Lower Upper
 75 100
 155 5.7 43.6 130.8#
 157 0.0 54.1 162.3#

