

Data Path : Z:\voasrv\HPCHEM1\MSVOA\_Y\Data\VY072321\  
 Data File : VY005435.D  
 Acq On : 23 Jul 2021 22:51  
 Operator : SY/MD  
 Sample : M3159-08  
 Misc : 3.77G/5ML/MSVOA\_Y/SOIL  
 ALS Vial : 12 Sample Multiplier: 1

Instrument :  
 MSVOA\_Y  
 ClientSampleId :  
 20210453-39

Quant Time: Jul 24 03:05:18 2021  
 Quant Method : Z:\voasrv\HPCHEM1\MSVOA\_Y\methods\82Y072221S.M  
 Quant Title : SW846 8260  
 QLast Update : Fri Jul 23 06:20:14 2021  
 Response via : Initial Calibration

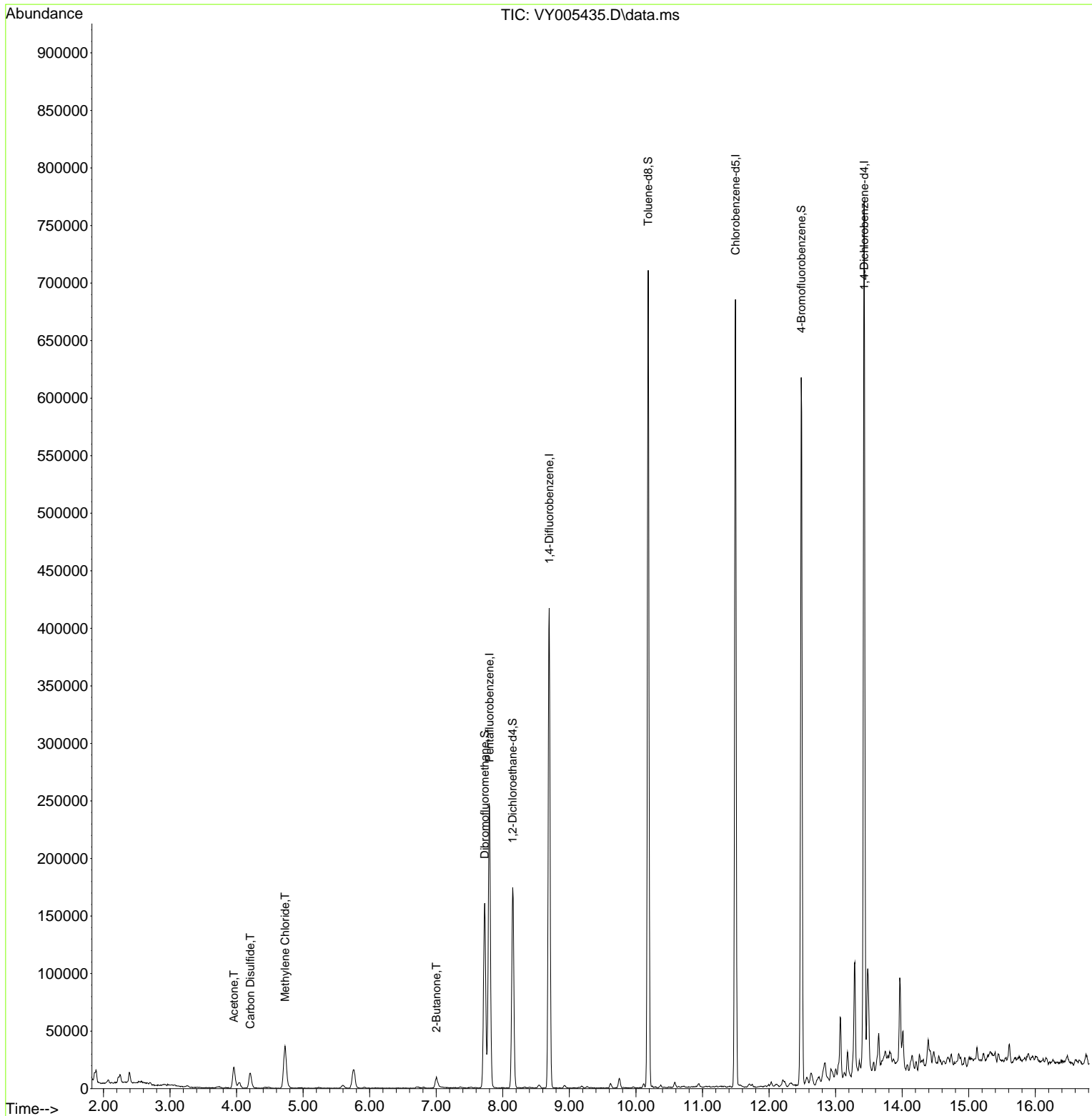
Compound	R.T.	QIon	Response	Conc	Units	Dev(Min)
-----						
Internal Standards						
1) Pentafluorobenzene	7.801	168	203152	50.00	ug/l	0.00
34) 1,4-Difluorobenzene	8.697	114	351118	50.00	ug/l	0.00
63) Chlorobenzene-d5	11.496	117	358809	50.00	ug/l	0.00
72) 1,4-Dichlorobenzene-d4	13.428	152	192065	50.00	ug/l	0.00
System Monitoring Compounds						
33) 1,2-Dichloroethane-d4	8.149	65	142145	65.49	ug/l	0.00
Spiked Amount	50.000	Range	50 - 163	Recovery	=	130.98%
35) Dibromofluoromethane	7.728	113	107628	53.09	ug/l	0.00
Spiked Amount	50.000	Range	54 - 147	Recovery	=	106.18%
50) Toluene-d8	10.185	98	449888	52.36	ug/l	0.00
Spiked Amount	50.000	Range	49 - 140	Recovery	=	104.72%
62) 4-Bromofluorobenzene	12.483	95	165952	58.52	ug/l	0.00
Spiked Amount	50.000	Range	25 - 144	Recovery	=	117.04%
Target Compounds						
						Qvalue
16) Acetone	3.960	43	31856	64.27	ug/l	100
17) Carbon Disulfide	4.204	76	25163	3.92	ug/l	99
20) Methylene Chloride	4.729	84	27099	8.47	ug/l	97
25) 2-Butanone	7.003	43	12639	17.03	ug/l	93
-----						

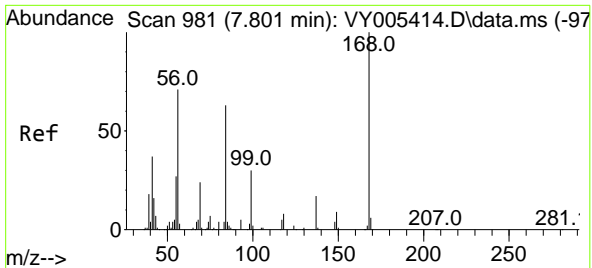
(#) = qualifier out of range (m) = manual integration (+) = signals summed

Data Path : Z:\voasrv\HPCHEM1\MSVOA\_Y\Data\VY072321\  
 Data File : VY005435.D  
 Acq On : 23 Jul 2021 22:51  
 Operator : SY/MD  
 Sample : M3159-08  
 Misc : 3.77G/5ML/MSVOA\_Y/SOIL  
 ALS Vial : 12 Sample Multiplier: 1

Instrument :  
 MSVOA\_Y  
 ClientSampleId :  
 20210453-39

Quant Time: Jul 24 03:05:18 2021  
 Quant Method : Z:\voasrv\HPCHEM1\MSVOA\_Y\methods\82Y072221S.M  
 Quant Title : SW846 8260  
 QLast Update : Fri Jul 23 06:20:14 2021  
 Response via : Initial Calibration

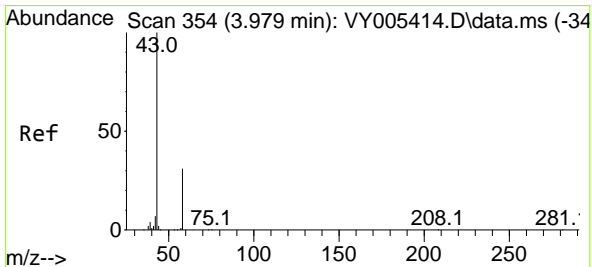
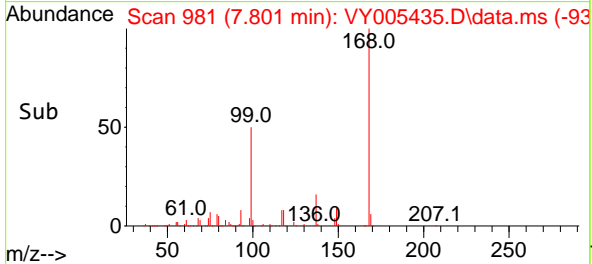
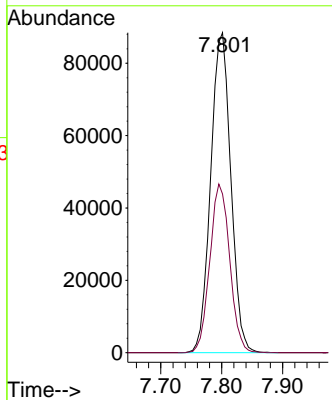
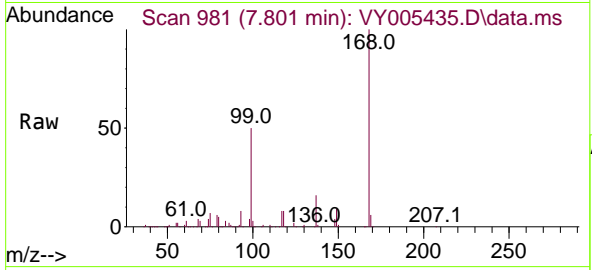




#1  
 Pentafluorobenzene  
 Concen: 50.00 ug/l  
 RT: 7.801 min Scan# 981  
 Delta R.T. 0.000 min  
 Lab File: VY005435.D  
 Acq: 23 Jul 2021 22:51

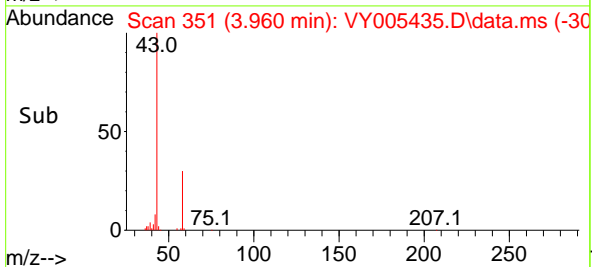
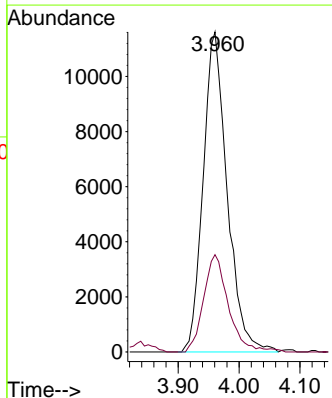
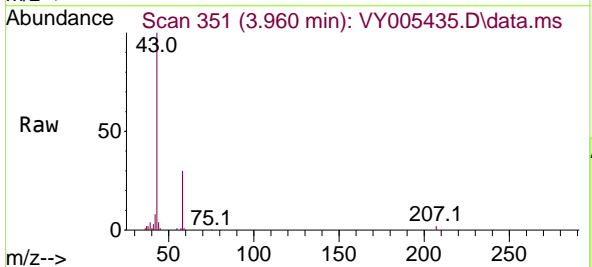
Instrument :  
 MSVOA\_Y  
 ClientSampleId :  
 20210453-39

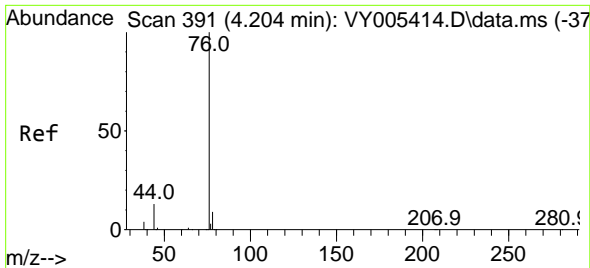
Tgt Ion:168 Resp: 203152  
 Ion Ratio Lower Upper  
 168 100  
 99 49.6 39.8 59.6



#16  
 Acetone  
 Concen: 64.27 ug/l  
 RT: 3.960 min Scan# 351  
 Delta R.T. -0.018 min  
 Lab File: VY005435.D  
 Acq: 23 Jul 2021 22:51

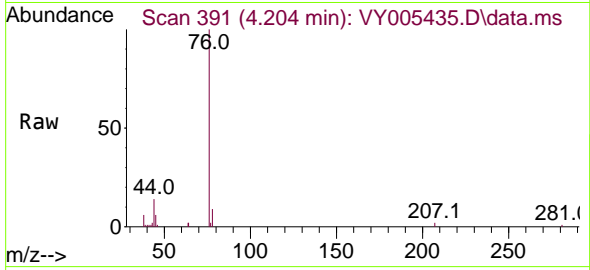
Tgt Ion: 43 Resp: 31856  
 Ion Ratio Lower Upper  
 43 100  
 58 30.4 24.5 36.7



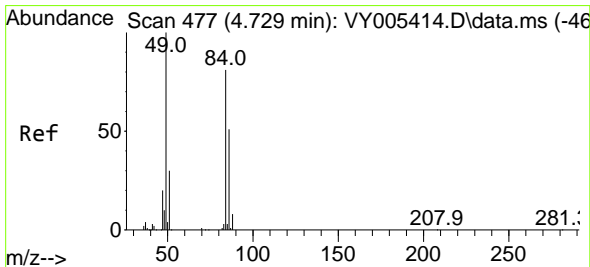
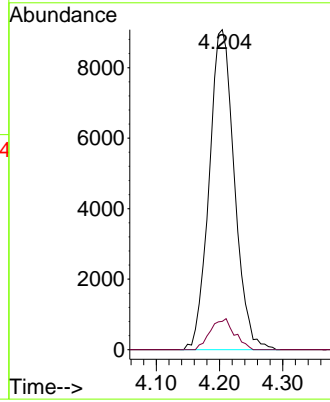
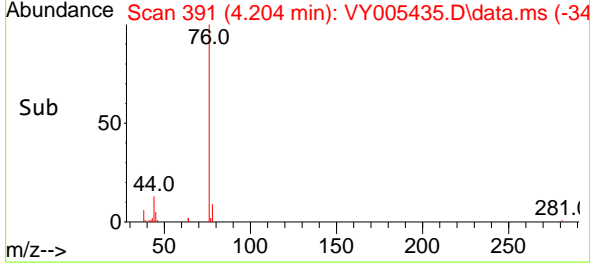


#17  
 Carbon Disulfide  
 Concen: 3.92 ug/l  
 RT: 4.204 min Scan# 391  
 Delta R.T. 0.000 min  
 Lab File: VY005435.D  
 Acq: 23 Jul 2021 22:51

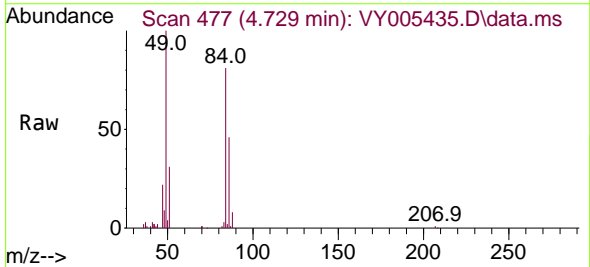
Instrument :  
 MSVOA\_Y  
 ClientSampled :  
 20210453-39



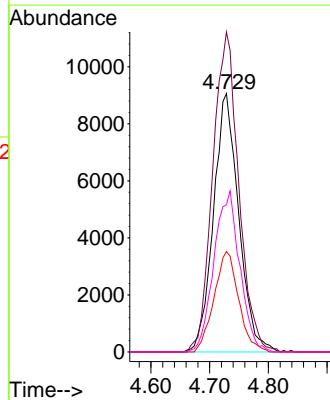
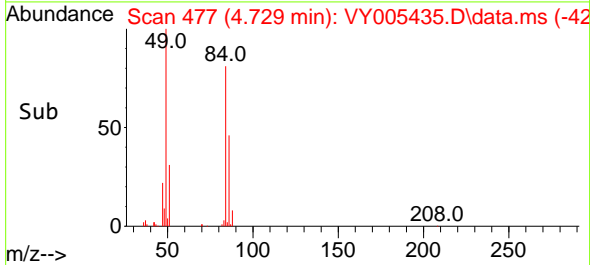
Tgt Ion: 76 Resp: 25163  
 Ion Ratio Lower Upper  
 76 100  
 78 8.8 7.3 10.9

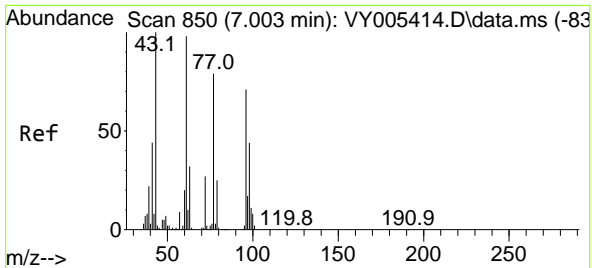


#20  
 Methylene Chloride  
 Concen: 8.47 ug/l  
 RT: 4.729 min Scan# 477  
 Delta R.T. -0.000 min  
 Lab File: VY005435.D  
 Acq: 23 Jul 2021 22:51



Tgt Ion: 84 Resp: 27099  
 Ion Ratio Lower Upper  
 84 100  
 49 123.8 98.9 148.3  
 51 38.9 30.0 45.0  
 86 56.9 50.4 75.6

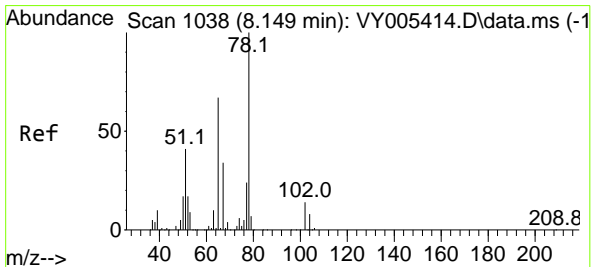
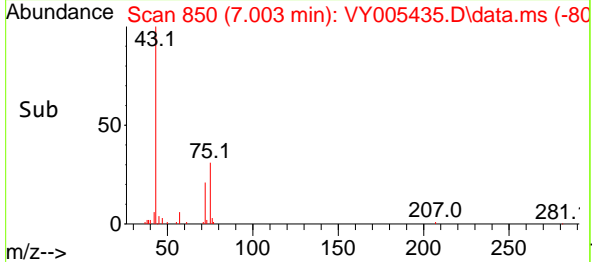
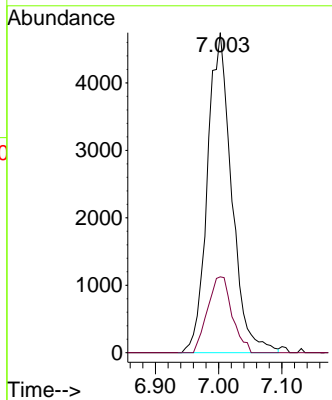
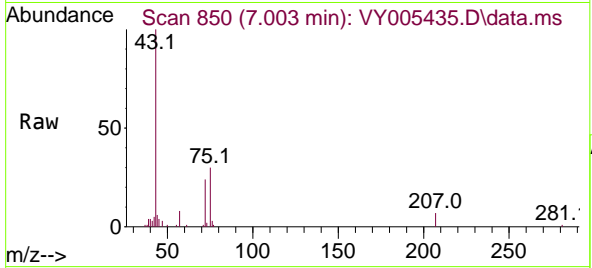




#25  
 2-Butanone  
 Concen: 17.03 ug/l  
 RT: 7.003 min Scan# 850  
 Delta R.T. 0.000 min  
 Lab File: VY005435.D  
 Acq: 23 Jul 2021 22:51

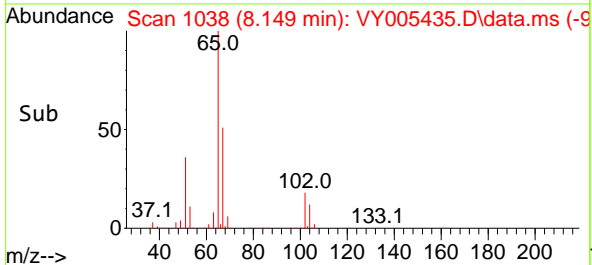
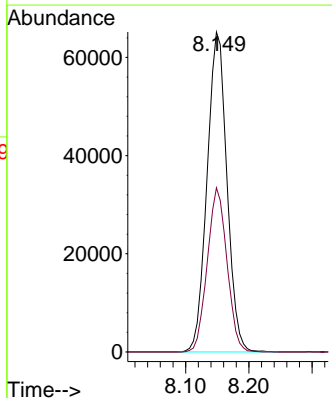
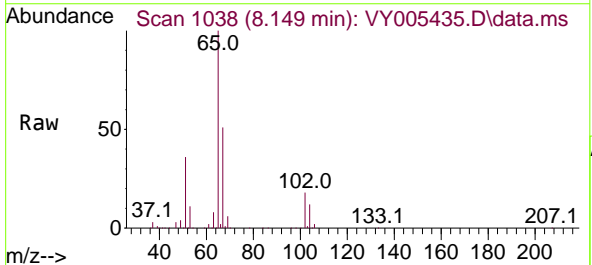
Instrument :  
 MSVOA\_Y  
 ClientSampled :  
 20210453-39

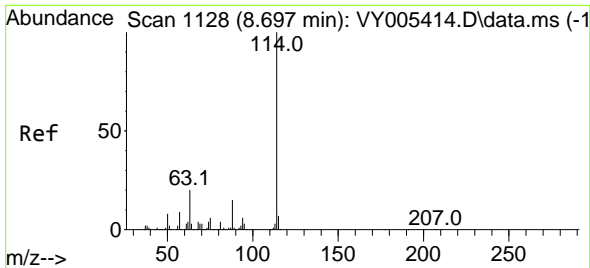
Tgt Ion: 43 Resp: 12639  
 Ion Ratio Lower Upper  
 43 100  
 72 23.7 21.9 32.9



#33  
 1,2-Dichloroethane-d4  
 Concen: 65.49 ug/l  
 RT: 8.149 min Scan# 1038  
 Delta R.T. 0.000 min  
 Lab File: VY005435.D  
 Acq: 23 Jul 2021 22:51

Tgt Ion: 65 Resp: 142145  
 Ion Ratio Lower Upper  
 65 100  
 67 50.7 0.0 102.2

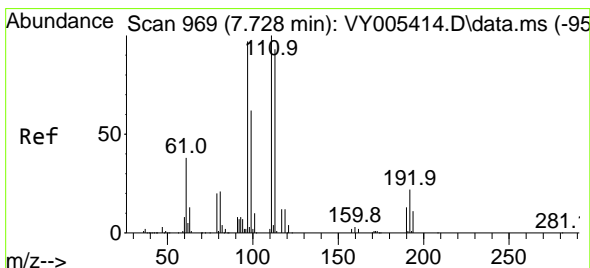
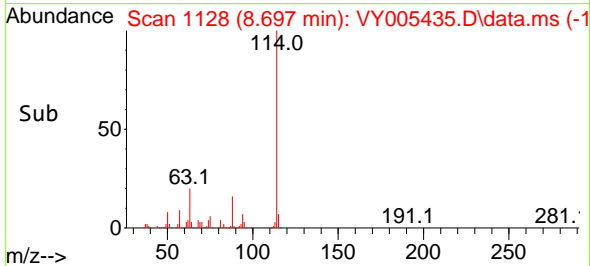
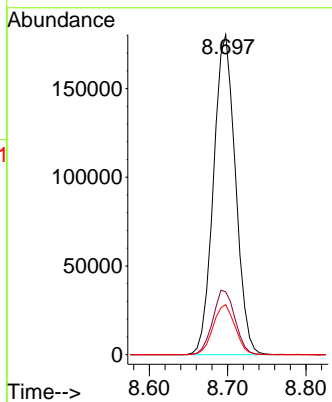
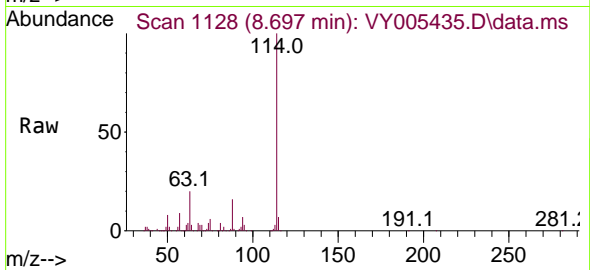




#34  
 1,4-Difluorobenzene  
 Concen: 50.00 ug/l  
 RT: 8.697 min Scan# 1128  
 Delta R.T. 0.000 min  
 Lab File: VY005435.D  
 Acq: 23 Jul 2021 22:51

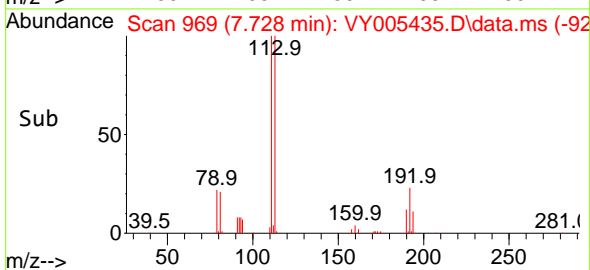
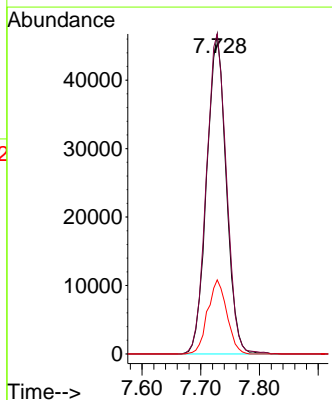
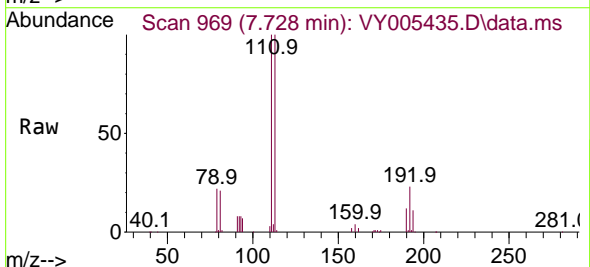
Instrument :  
 MSVOA\_Y  
 ClientSampled :  
 20210453-39

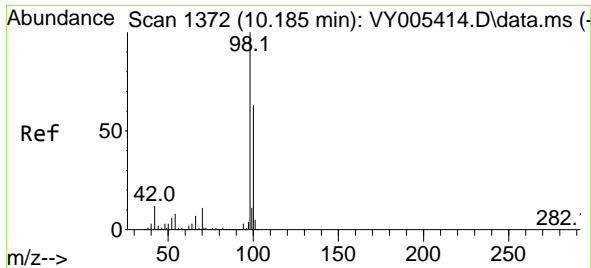
Tgt Ion	Resp	Lower	Upper
114	100		
63	19.7	0.0	39.0
88	15.6	0.0	30.8



#35  
 Dibromofluoromethane  
 Concen: 53.09 ug/l  
 RT: 7.728 min Scan# 969  
 Delta R.T. 0.000 min  
 Lab File: VY005435.D  
 Acq: 23 Jul 2021 22:51

Tgt Ion	Resp	Lower	Upper
113	100		
111	102.8	82.6	124.0
192	22.8	18.9	28.3

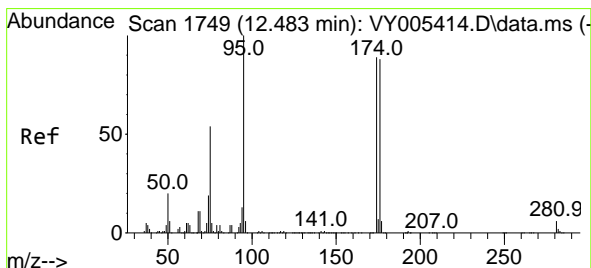
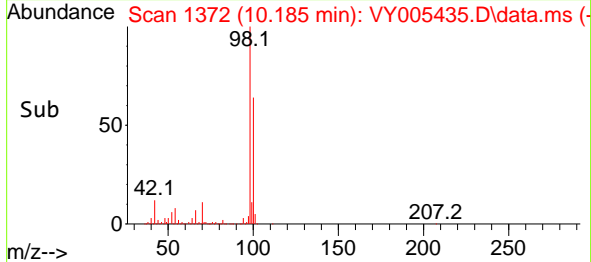
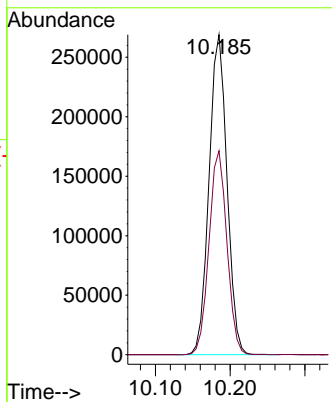
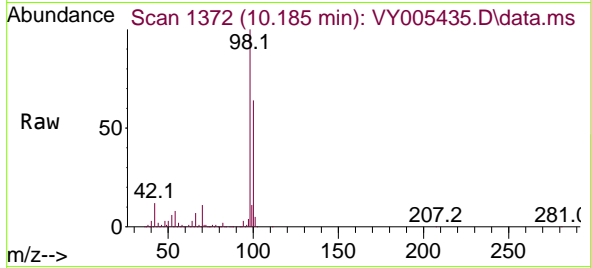




#50  
 Toluene-d8  
 Concen: 52.36 ug/l  
 RT: 10.185 min Scan# 1372  
 Delta R.T. 0.000 min  
 Lab File: VY005435.D  
 Acq: 23 Jul 2021 22:51

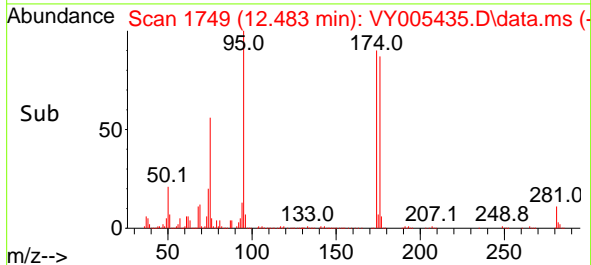
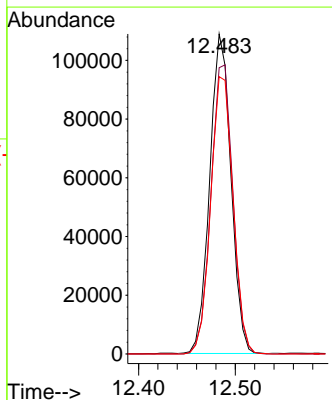
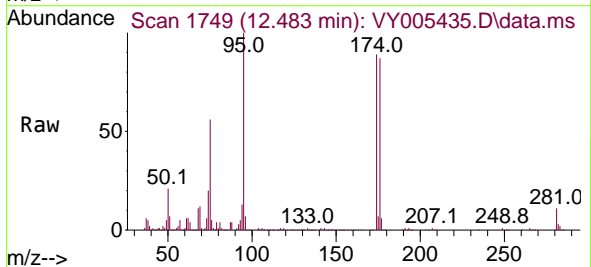
Instrument :  
 MSVOA\_Y  
 ClientSampled :  
 20210453-39

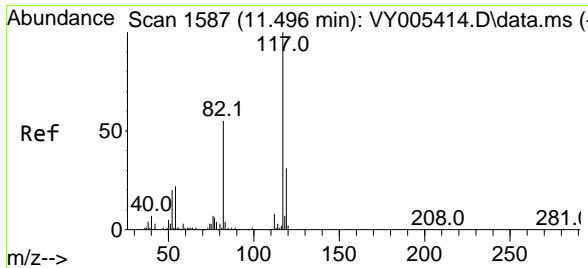
Tgt Ion: 98 Resp: 449888  
 Ion Ratio Lower Upper  
 98 100  
 100 63.6 50.9 76.3



#62  
 4-Bromofluorobenzene  
 Concen: 58.52 ug/l  
 RT: 12.483 min Scan# 1749  
 Delta R.T. 0.000 min  
 Lab File: VY005435.D  
 Acq: 23 Jul 2021 22:51

Tgt Ion: 95 Resp: 165952  
 Ion Ratio Lower Upper  
 95 100  
 174 93.7 0.0 186.6  
 176 91.3 0.0 182.4



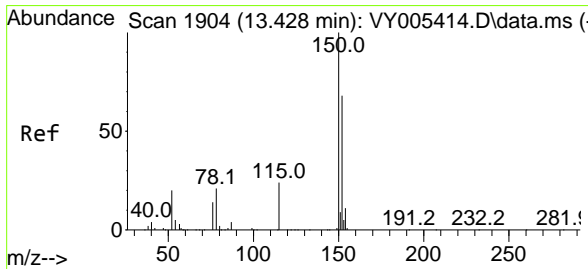
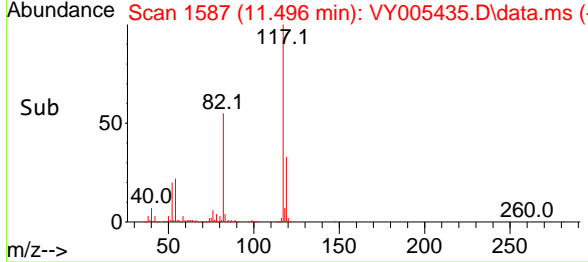
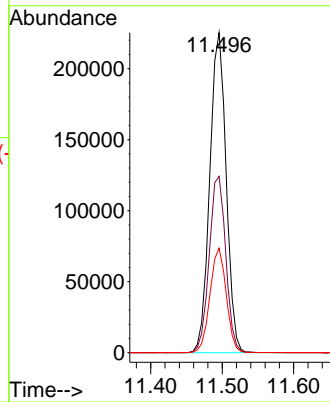
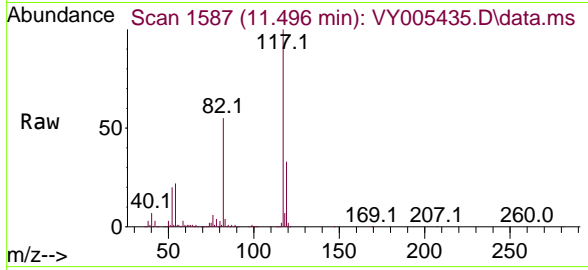


#63  
 Chlorobenzene-d5  
 Concen: 50.00 ug/l  
 RT: 11.496 min Scan# 1587  
 Delta R.T. 0.000 min  
 Lab File: VY005435.D  
 Acq: 23 Jul 2021 22:51

Instrument :  
 MSVOA\_Y  
 ClientSampled :  
 20210453-39

Tgt Ion:117 Resp: 358809

Ion	Ratio	Lower	Upper
117	100		
82	55.1	43.8	65.6
119	32.6	24.8	37.2



#72  
 1,4-Dichlorobenzene-d4  
 Concen: 50.00 ug/l  
 RT: 13.428 min Scan# 1904  
 Delta R.T. 0.000 min  
 Lab File: VY005435.D  
 Acq: 23 Jul 2021 22:51

Tgt Ion:152 Resp: 192065

Ion	Ratio	Lower	Upper
152	100		
115	55.8	27.7	83.1
150	157.9	0.0	349.6

