

Data Path : Z:\voasrv\HPCHEM1\MSVOA\_Y\Data\VY072321\  
 Data File : VY005422.D  
 Acq On : 23 Jul 2021 17:50  
 Operator : SY/MD  
 Sample : M3137-02  
 Misc : 7.80G/5ML/MSVOA\_Y/SOIL  
 ALS Vial : 7 Sample Multiplier: 1

Instrument :  
 MSVOA\_Y  
 ClientSampleId :  
 20210723-7

Integration Parameters: RTEINT.P  
 Integrator: RTE  
 Smoothing : ON Filtering: 5  
 Sampling : 1 Min Area: 3 % of largest Peak  
 Start Thrs: 0.2 Max Peaks: 100  
 Stop Thrs : 0 Peak Location: TOP

If leading or trailing edge < 100 prefer < Baseline drop else tangent >  
 Peak separation: 5

Method : Z:\voasrv\HPCHEM1\MSVOA\_Y\methods\82Y072221S.M  
 Title : SW846 8260

Signal : TIC: VY005422.D\data.ms

peak #	R.T. min	first scan	max scan	last scan	PK TY	peak height	corr. area	corr. % max.	% of total
1	1.869	4	8	16	rVB2	20678	36822	1.35%	0.427%
2	3.960	342	351	358	rBV	28692	76249	2.80%	0.885%
3	4.046	359	365	378	rVB2	10993	30903	1.13%	0.359%
4	4.722	465	476	496	rBV4	11662	45521	1.67%	0.528%
5	7.728	958	969	974	rBV	160366	369111	13.53%	4.282%
6	7.795	974	980	993	rVB	246378	558927	20.49%	6.484%
7	8.149	1027	1038	1050	rBV	174714	383522	14.06%	4.449%
8	8.697	1119	1128	1137	rVB	400377	794483	29.13%	9.217%
9	10.185	1364	1372	1380	rBV	686959	1164132	42.68%	13.506%
10	11.496	1579	1587	1595	rBV	650431	1045968	38.35%	12.135%
11	12.495	1739	1751	1761	rBV2	1535977	2727560	100.00%	31.643%
12	12.843	1798	1808	1815	rBV	107632	171495	6.29%	1.990%
13	13.428	1891	1904	1910	rBV	665716	1031375	37.81%	11.965%
14	13.971	1986	1993	2001	rVB2	111101	183586	6.73%	2.130%

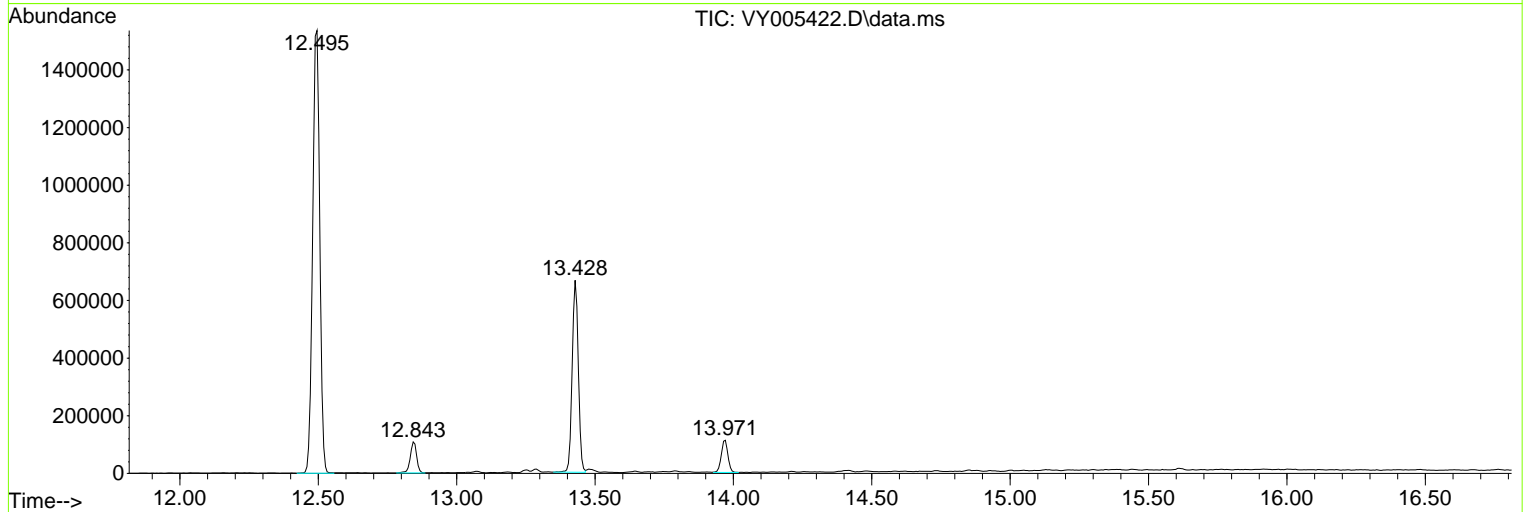
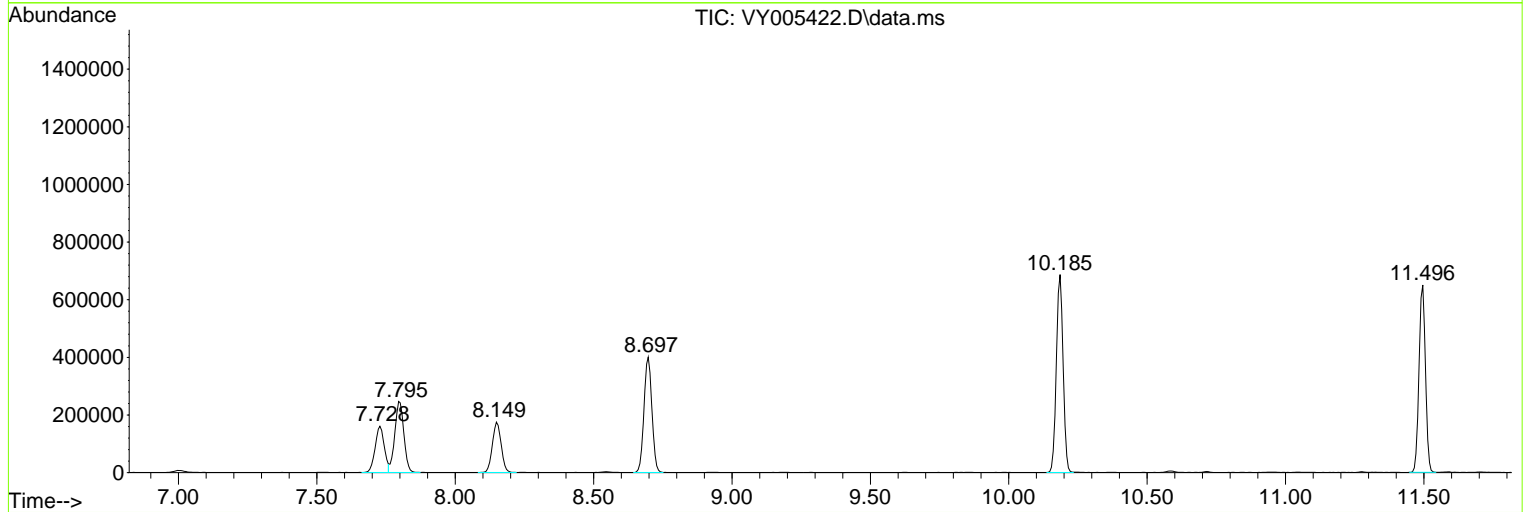
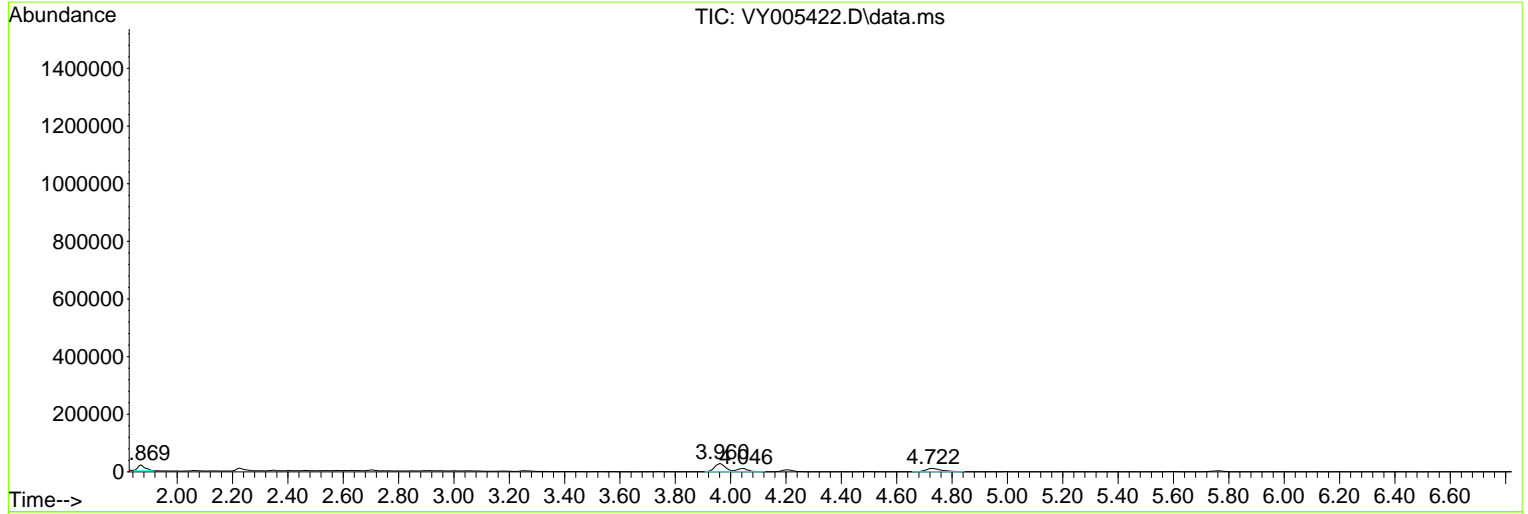
Sum of corrected areas: 8619654

Data Path : Z:\voasrv\HPCHEM1\MSVOA\_Y\Data\VY072321\  
 Data File : VY005422.D  
 Acq On : 23 Jul 2021 17:50  
 Operator : SY/MD  
 Sample : M3137-02  
 Misc : 7.80G/5ML/MSVOA\_Y/SOIL  
 ALS Vial : 7 Sample Multiplier: 1

Instrument :  
 MSVOA\_Y  
 ClientSampleId :  
 20210723-7

Quant Method : Z:\voasrv\HPCHEM1\MSVOA\_Y\methods\82Y072221S.M  
 Quant Title : SW846 8260

TIC Library : C:\Database\NIST20.L  
 TIC Integration Parameters: LSCINT.P



Data Path : Z:\voasrv\HPCHEM1\MSVOA\_Y\Data\VY072321\  
 Data File : VY005422.D  
 Acq On : 23 Jul 2021 17:50  
 Operator : SY/MD  
 Sample : M3137-02  
 Misc : 7.80G/5ML/MSVOA\_Y/SOIL  
 ALS Vial : 7 Sample Multiplier: 1

Instrument :  
 MSVOA\_Y  
 ClientSampleId :  
 20210723-7

Quant Method : Z:\voasrv\HPCHEM1\MSVOA\_Y\methods\82Y072221S.M  
 Quant Title : SW846 8260

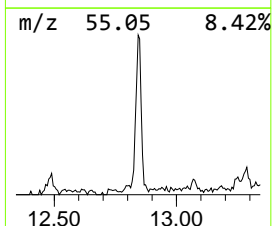
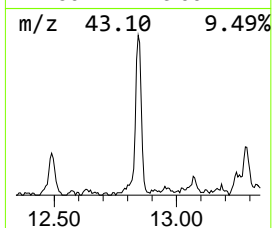
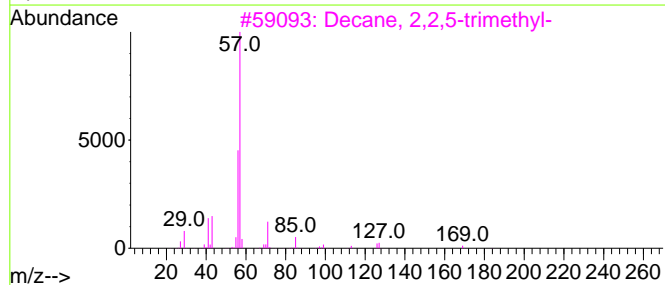
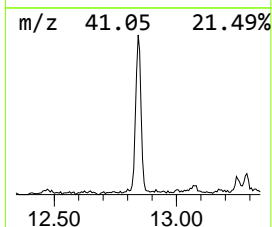
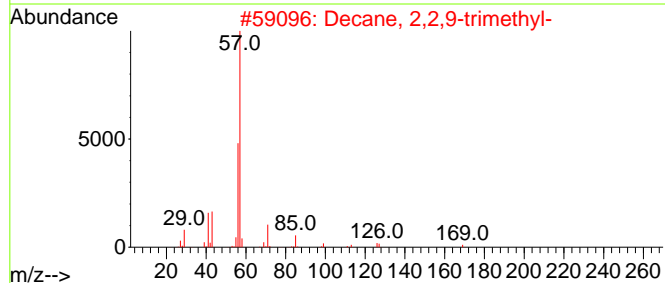
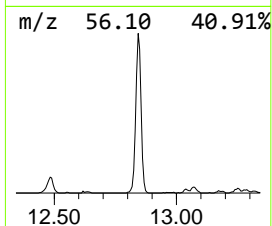
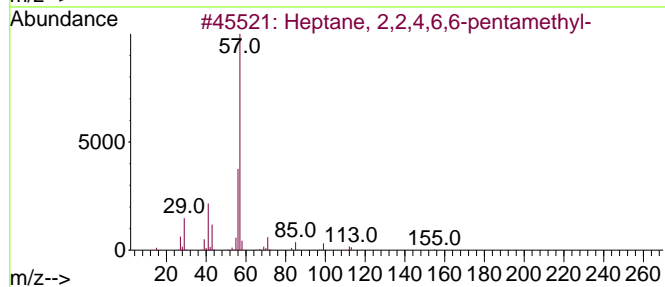
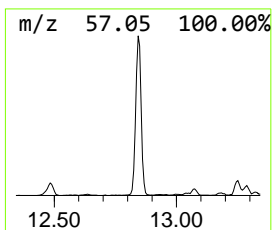
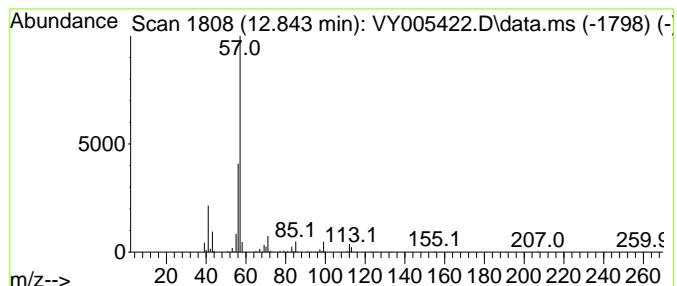
TIC Library : C:\Database\NIST20.L  
 TIC Integration Parameters: LSCINT.P

\*\*\*\*\*  
 Peak Number 1 Heptane, 2,2,4,6,6-pentamet... Concentration Rank 2

R.T.	EstConc	Area	Relative to ISTD	R.T.
12.843	8.31 ug/l	171495	1,4-Dichlorobenzene-d4	13.428

Hit#	of 5	Tentative ID	MW	MolForm	CAS#	Qual
1		Heptane, 2,2,4,6,6-pentamethyl-	170	C12H26	013475-82-6	83
2		Decane, 2,2,9-trimethyl-	184	C13H28	062238-00-0	72
3		Decane, 2,2,5-trimethyl-	184	C13H28	062237-96-1	64
4		Dodecane, 2,2,11,11-tetramethyl-	226	C16H34	127204-12-0	64
5		Tetradecane, 2,2-dimethyl-	226	C16H34	059222-86-5	64



Data Path : Z:\voasrv\HPCHEM1\MSVOA\_Y\Data\VY072321\  
 Data File : VY005422.D  
 Acq On : 23 Jul 2021 17:50  
 Operator : SY/MD  
 Sample : M3137-02  
 Misc : 7.80G/5ML/MSVOA\_Y/SOIL  
 ALS Vial : 7 Sample Multiplier: 1

Instrument :  
 MSVOA\_Y  
 ClientSampleId :  
 20210723-7

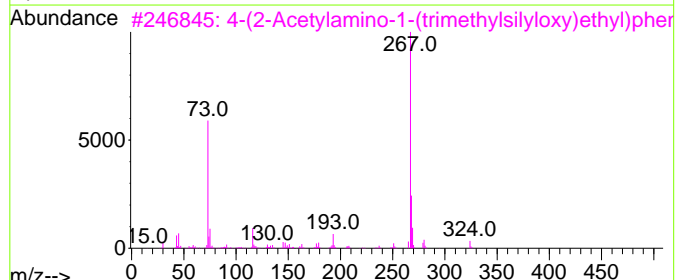
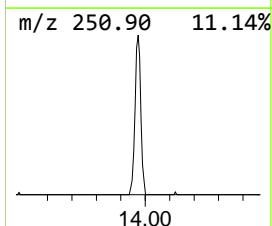
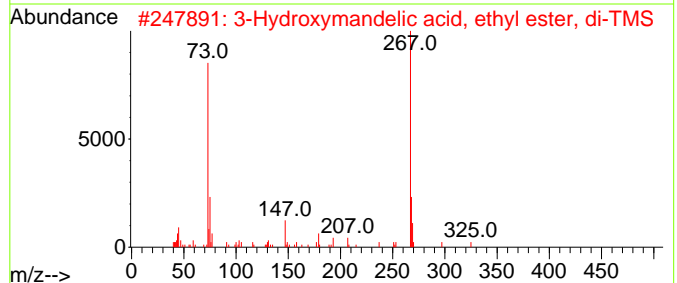
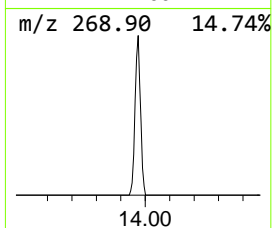
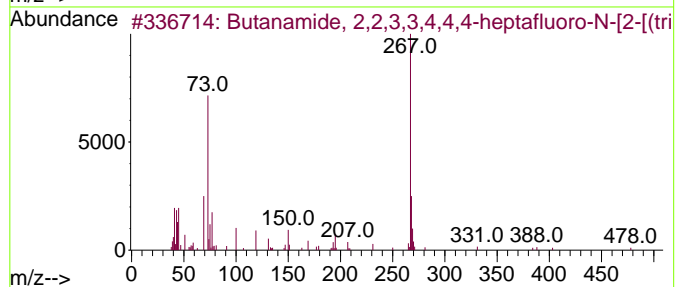
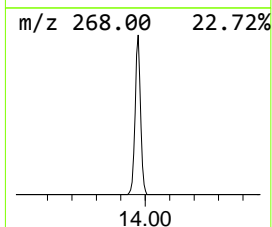
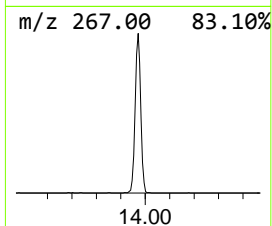
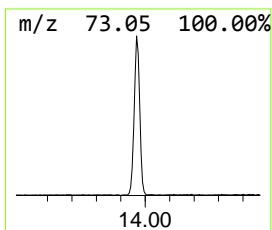
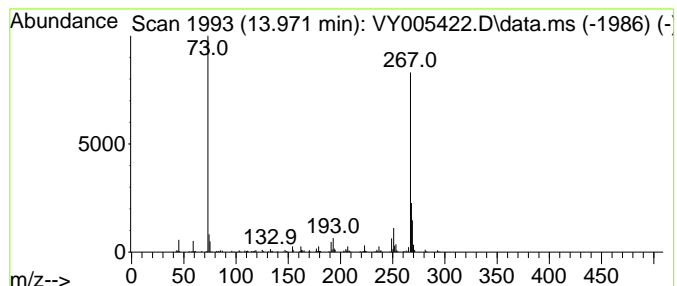
Quant Method : Z:\voasrv\HPCHEM1\MSVOA\_Y\methods\82Y072221S.M  
 Quant Title : SW846 8260

TIC Library : C:\Database\NIST20.L  
 TIC Integration Parameters: LSCINT.P

\*\*\*\*\*  
 Peak Number 2 Butanamide, 2,2,3,3,4,4,4-h... Concentration Rank 1

R.T.	EstConc	Area	Relative to ISTD	R.T.
13.971	8.90 ug/l	183586	1,4-Dichlorobenzene-d4	13.428

Hit#	of	5	Tentative ID	MW	MolForm	CAS#	Qual
1			Butanamide, 2,2,3,3,4,4,4-heptaf...	493	C18H26F7N03Si2	055471-01-7	64
2			3-Hydroxymandelic acid, ethyl es...	340	C16H28O4Si2	1000071-88-9	64
3			4-(2-Acetylamino-1-(trimethylsil...	339	C16H29N03Si2	1000373-43-5	64
4			2,5-Dihydroxybenzaldehyde, 2TMS ...	282	C13H22O3Si2	056114-69-3	64
5			Acridone, TMS derivative	267	C16H17N0Si	1000478-16-0	59



Data Path : Z:\voasrv\HPCHEM1\MSVOA\_Y\Data\VY072321\  
Data File : VY005422.D  
Acq On : 23 Jul 2021 17:50  
Operator : SY/MD  
Sample : M3137-02  
Misc : 7.80G/5ML/MSVOA\_Y/SOIL  
ALS Vial : 7 Sample Multiplier: 1

Instrument :  
MSVOA\_Y  
ClientSampleId :  
20210723-7

Quant Method : Z:\voasrv\HPCHEM1\MSVOA\_Y\methods\82Y072221S.M  
Quant Title : SW846 8260

TIC Library : C:\Database\NIST0.L  
TIC Integration Parameters: LSCINT.P

TIC Top Hit name	RT	EstConc	Units	Response	--Internal Standard--			
					#	RT	Resp	Conc
Heptane, 2,2,4,...	12.843	8.3	ug/l	171495	4	13.428	1031380	50.0
Butanamide, 2,2...	13.971	8.9	ug/l	183586	4	13.428	1031380	50.0