

Data Path : Z:\voasrv\HPCHEM1\MSVOA_Y\Data\VY072321\
 Data File : VY005426.D
 Acq On : 23 Jul 2021 19:22
 Operator : SY/MD
 Sample : M3137-06
 Misc : 11.75G/5ML/MSVOA_Y/SOIL
 ALS Vial : 11 Sample Multiplier: 1

Instrument :
 MSVOA_Y
 ClientSampleId :
 20210727-23

Integration Parameters: RTEINT.P

Integrator: RTE
 Smoothing : ON Filtering: 5
 Sampling : 1 Min Area: 3 % of largest Peak
 Start Thrs: 0.2 Max Peaks: 100
 Stop Thrs : 0 Peak Location: TOP

If leading or trailing edge < 100 prefer < Baseline drop else tangent >
 Peak separation: 5

Method : Z:\voasrv\HPCHEM1\MSVOA_Y\methods\82Y072221S.M
 Title : SW846 8260

Signal : TIC: VY005426.D\data.ms

peak #	R.T. min	first scan	max scan	last scan	PK TY	peak height	corr. area	corr. % max.	% of total
1	1.869	4	8	21	rVB2	43140	81064	2.82%	0.882%
2	2.253	68	71	78	rVB	19531	30861	1.07%	0.336%
3	3.960	340	351	360	rBV	65610	179782	6.26%	1.956%
4	4.210	379	392	403	rVB	19780	54896	1.91%	0.597%
5	4.728	467	477	489	rBV2	9683	32305	1.12%	0.352%
6	6.996	839	849	861	rBV2	21914	70075	2.44%	0.763%
7	7.728	958	969	974	rBV	159460	370684	12.90%	4.034%
8	7.801	974	981	991	rVB	242884	559723	19.48%	6.091%
9	8.149	1029	1038	1049	rBV	178582	390543	13.59%	4.250%
10	8.697	1119	1128	1139	rBV	416071	804146	27.99%	8.750%
11	10.185	1364	1372	1380	rBV	702870	1174289	40.87%	12.778%
12	11.496	1577	1587	1595	rBV	666329	1073426	37.36%	11.681%
13	12.489	1740	1750	1759	rBV2	1593233	2873023	100.00%	31.263%
14	13.282	1872	1880	1889	rBV2	28029	54008	1.88%	0.588%
15	13.428	1895	1904	1910	rBV	718070	1084919	37.76%	11.806%
16	13.477	1910	1912	1919	rVB3	21626	37746	1.31%	0.411%
17	13.965	1986	1992	2002	rVB2	192288	318294	11.08%	3.464%

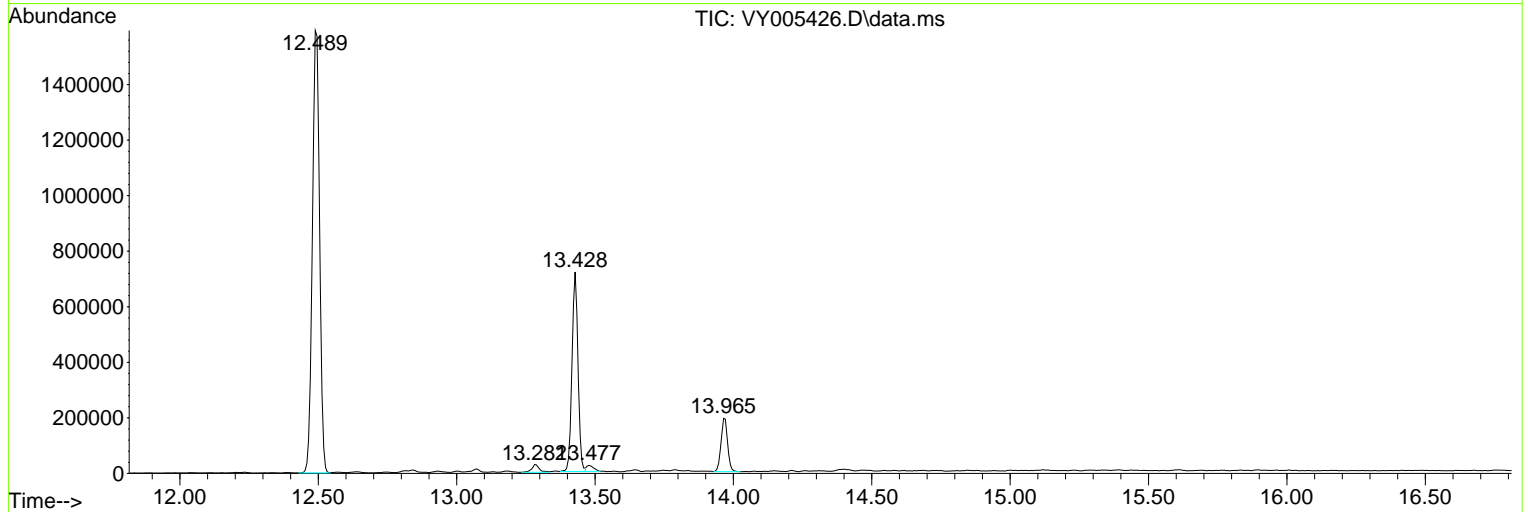
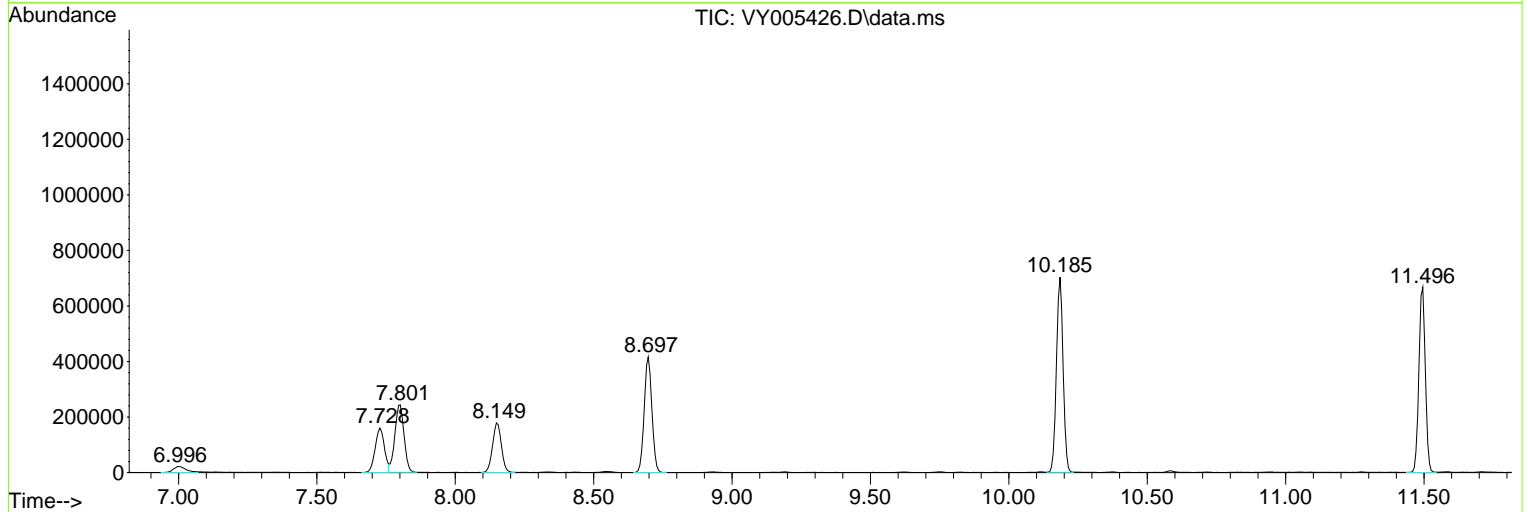
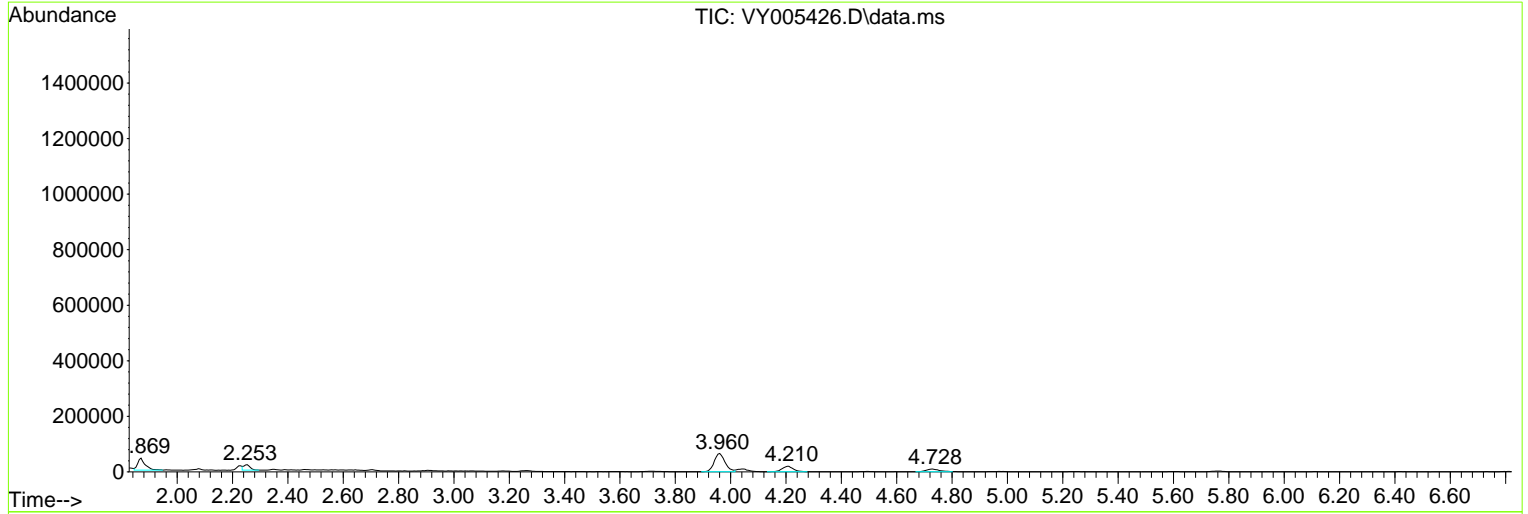
Sum of corrected areas: 9189784

Data Path : Z:\voasrv\HPCHEM1\MSVOA_Y\Data\VY072321\
 Data File : VY005426.D
 Acq On : 23 Jul 2021 19:22
 Operator : SY/MD
 Sample : M3137-06
 Misc : 11.75G/5ML/MSVOA_Y/SOIL
 ALS Vial : 11 Sample Multiplier: 1

Instrument :
 MSVOA_Y
 ClientSampleId :
 20210727-23

Quant Method : Z:\voasrv\HPCHEM1\MSVOA_Y\methods\82Y072221S.M
 Quant Title : SW846 8260

TIC Library : C:\Database\NIST20.L
 TIC Integration Parameters: LSCINT.P



Data Path : Z:\voasrv\HPCHEM1\MSVOA_Y\Data\VY072321\
 Data File : VY005426.D
 Acq On : 23 Jul 2021 19:22
 Operator : SY/MD
 Sample : M3137-06
 Misc : 11.75G/5ML/MSVOA_Y/SOIL
 ALS Vial : 11 Sample Multiplier: 1

Instrument :
 MSVOA_Y
 ClientSampled :
 20210727-23

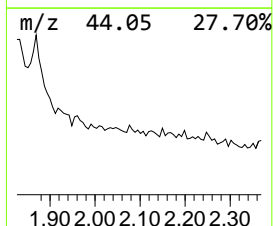
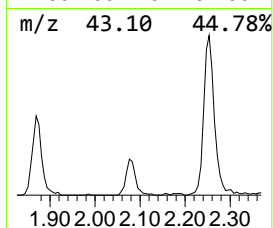
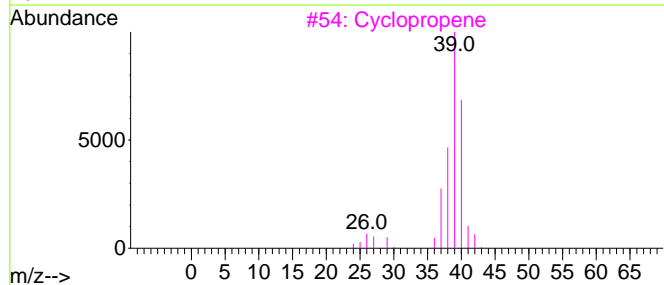
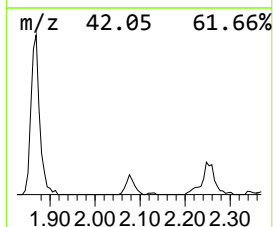
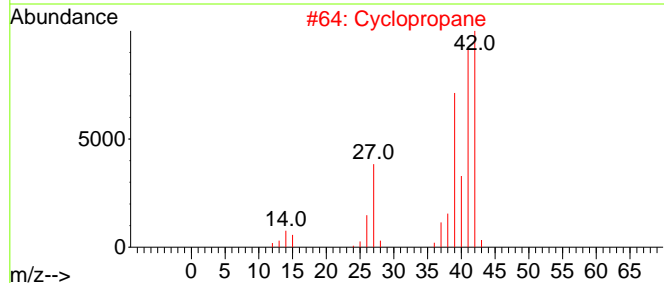
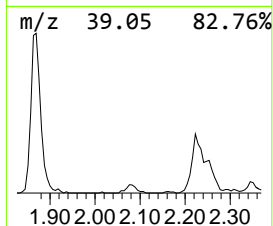
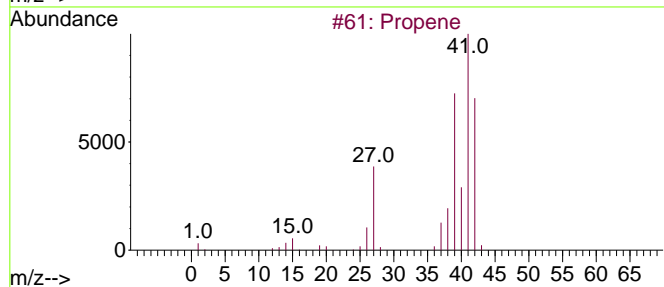
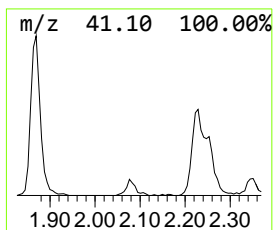
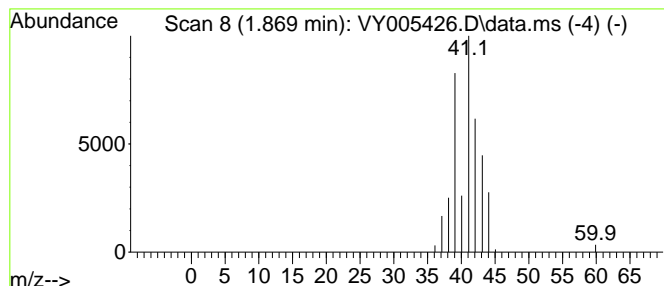
Quant Method : Z:\voasrv\HPCHEM1\MSVOA_Y\methods\82Y072221S.M
 Quant Title : SW846 8260

TIC Library : C:\Database\NIST0.L
 TIC Integration Parameters: LSCINT.P

 Peak Number 1 Propene Concentration Rank 2

R.T.	EstConc	Area	Relative to ISTD	R.T.
1.869	7.24 ug/l	81064	Pentafluorobenzene	7.801

Hit#	of 5	Tentative ID	MW	MolForm	CAS#	Qual
1		Propene	42	C3H6	000115-07-1	90
2		Cyclopropane	42	C3H6	000075-19-4	7
3		Cyclopropene	40	C3H4	002781-85-3	5
4		2-Oxetanone, 4-methyl-	86	C4H6O2	003068-88-0	4
5		1-Hexanamine	101	C6H15N	000111-26-2	2



Data Path : Z:\voasrv\HPCHEM1\MSVOA_Y\Data\VY072321\
 Data File : VY005426.D
 Acq On : 23 Jul 2021 19:22
 Operator : SY/MD
 Sample : M3137-06
 Misc : 11.75G/5ML/MSVOA_Y/SOIL
 ALS Vial : 11 Sample Multiplier: 1

Instrument :
 MSVOA_Y
 ClientSampleId :
 20210727-23

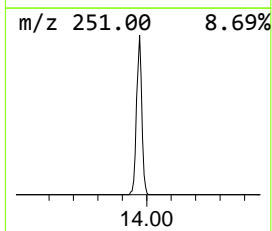
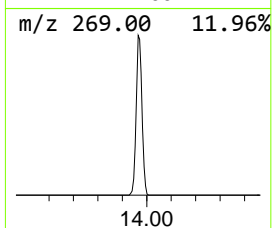
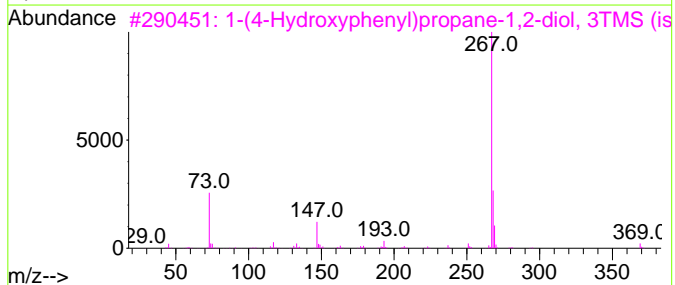
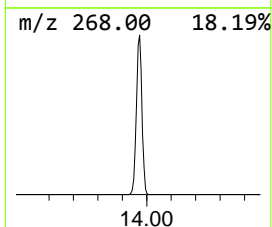
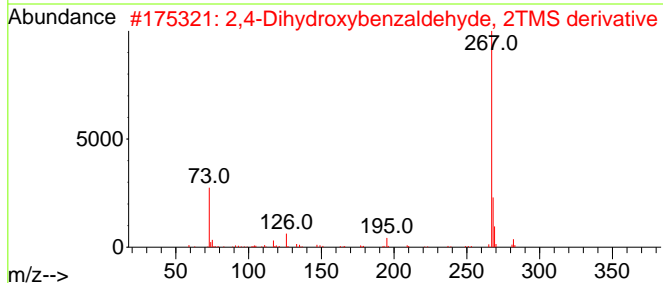
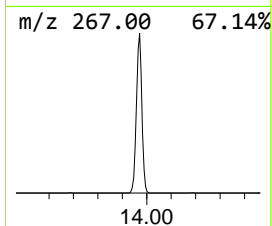
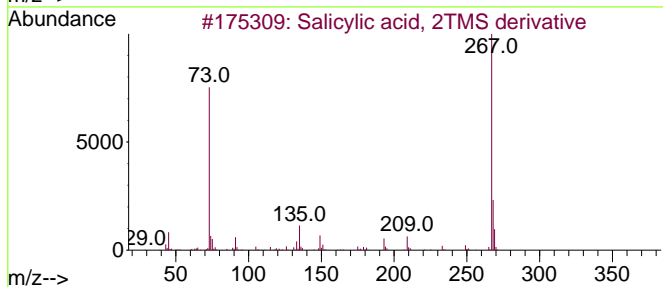
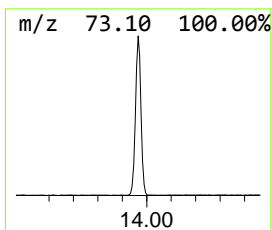
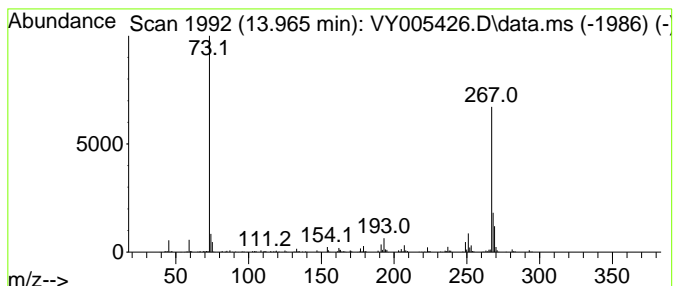
Quant Method : Z:\voasrv\HPCHEM1\MSVOA_Y\methods\82Y072221S.M
 Quant Title : SW846 8260

TIC Library : C:\Database\NIST0.L
 TIC Integration Parameters: LSCINT.P

 Peak Number 2 Salicylic acid, 2TMS deriva... Concentration Rank 1

R.T.	EstConc	Area	Relative to ISTD	R.T.
13.965	14.67 ug/l	318294	1,4-Dichlorobenzene-d4	13.428

Hit#	of	5	Tentative ID	MW	MolForm	CAS#	Qual
1			Salicylic acid, 2TMS derivative	282	C13H22O3Si2	003789-85-3	64
2			2,4-Dihydroxybenzaldehyde, 2TMS ...	282	C13H22O3Si2	033617-38-8	64
3			1-(4-Hydroxyphenyl)propane-1,2-d...	384	C18H36O3Si3	1000495-85-6	59
4			2,5-Dihydroxybenzaldehyde, 2TMS ...	282	C13H22O3Si2	056114-69-3	59
5			Bamethan, 2TMS derivative	353	C18H35NO2Si2	040629-66-1	56



Data Path : Z:\voasrv\HPCHEM1\MSVOA_Y\Data\VY072321\
Data File : VY005426.D
Acq On : 23 Jul 2021 19:22
Operator : SY/MD
Sample : M3137-06
Misc : 11.75G/5ML/MSVOA_Y/SOIL
ALS Vial : 11 Sample Multiplier: 1

Instrument :
MSVOA_Y
ClientSampleId :
20210727-23

Quant Method : Z:\voasrv\HPCHEM1\MSVOA_Y\methods\82Y072221S.M
Quant Title : SW846 8260

TIC Library : C:\Database\NIST0.L
TIC Integration Parameters: LSCINT.P

TIC Top Hit name	RT	EstConc	Units	Response	--Internal Standard--			
					#	RT	Resp	Conc
Propene	1.869	7.2	ug/l	81064	1	7.801	559723	50.0
Salicylic acid,...	13.965	14.7	ug/l	318294	4	13.428	1084920	50.0