

Data Path : Z:\voasrv\HPCHEM1\MSVOA_Y\Data\VY072423\
 Data File : VY014772.D
 Acq On : 24 Jul 2023 15:07
 Operator : SY/MD
 Sample : 03706-05
 Misc : 5.02g/5.0mL/MSVOA_Y/SOIL
 ALS Vial : 13 Sample Multiplier: 1

Instrument :
 MSVOA_Y
 ClientSampleId :
 B-P20A

Integration Parameters: RTEINT.P

Integrator: RTE
 Smoothing : ON Filtering: 5
 Sampling : 1 Min Area: 3 % of largest Peak
 Start Thrs: 0.2 Max Peaks: 100
 Stop Thrs : 0 Peak Location: TOP

If leading or trailing edge < 100 prefer < Baseline drop else tangent >
 Peak separation: 5

Method : Z:\voasrv\HPCHEM1\MSVOA_Y\methods\82Y071323S.M
 Title : SW846 8260

Signal : TIC: VY014772.D\data.ms

peak #	R.T. min	first scan	max scan	last scan	PK TY	peak height	corr. area	corr. % max.	% of total
1	4.704	461	473	491	rBV2	29898	94624	9.28%	1.615%
2	5.734	632	642	652	rBV3	13073	40818	4.00%	0.697%
3	6.978	830	846	860	rBV	34920	115979	11.38%	1.980%
4	7.709	955	966	972	rBV	144659	348087	34.15%	5.942%
5	7.783	972	978	992	rVB	247036	545012	53.48%	9.304%
6	8.136	1023	1036	1049	rBV2	148884	340620	33.42%	5.814%
7	8.685	1117	1126	1138	rBV	382925	746798	73.27%	12.748%
8	10.172	1362	1370	1380	rBV	582819	1019183	100.00%	17.398%
9	10.575	1430	1436	1446	rBV	35334	62441	6.13%	1.066%
10	10.941	1487	1496	1505	rBV2	12000	22834	2.24%	0.390%
11	11.489	1578	1586	1598	rBV	547304	920297	90.30%	15.710%
12	12.477	1739	1748	1759	rBV	461118	733535	71.97%	12.522%
13	13.422	1895	1903	1911	rBV	566664	867895	85.16%	14.815%

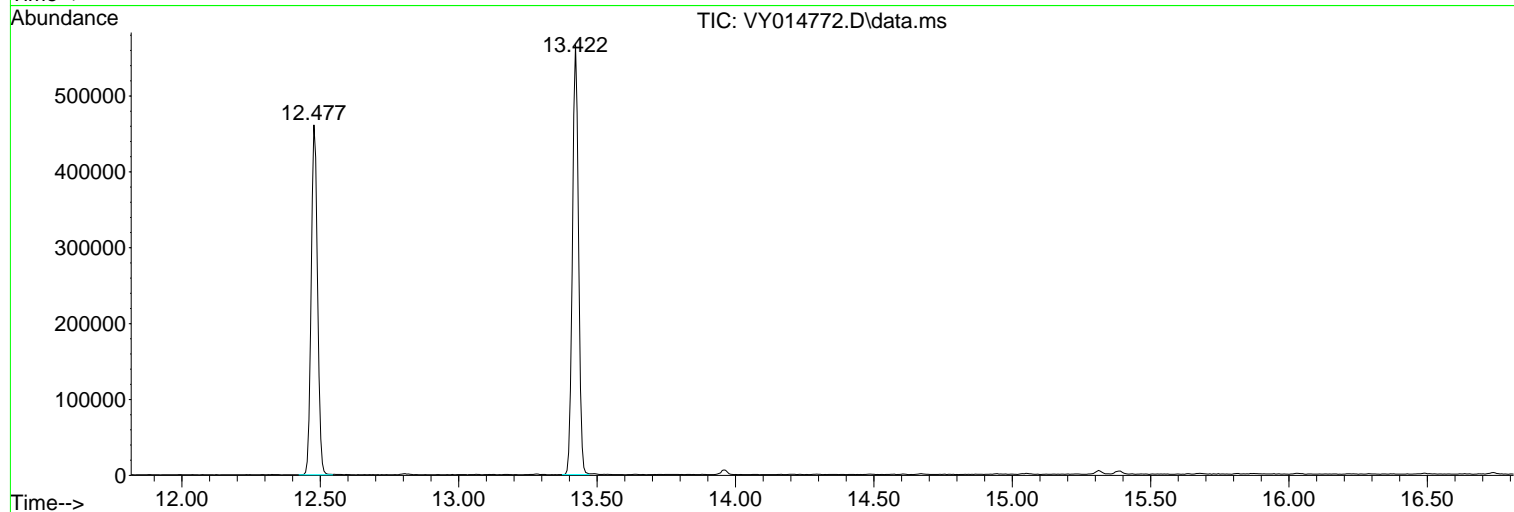
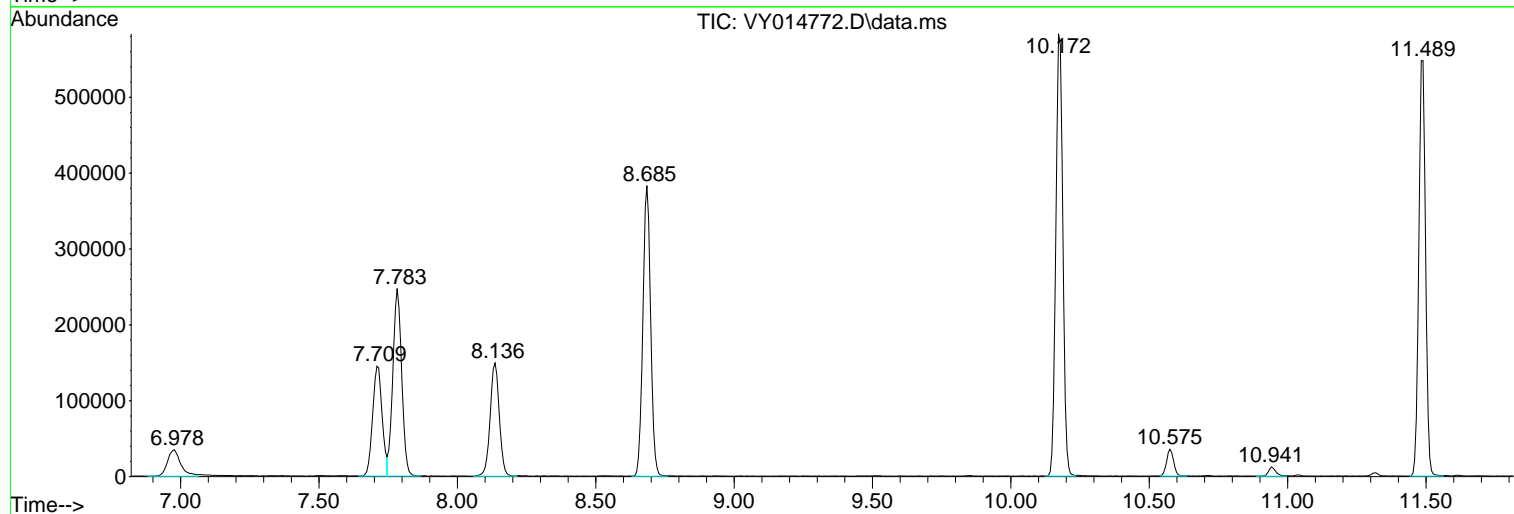
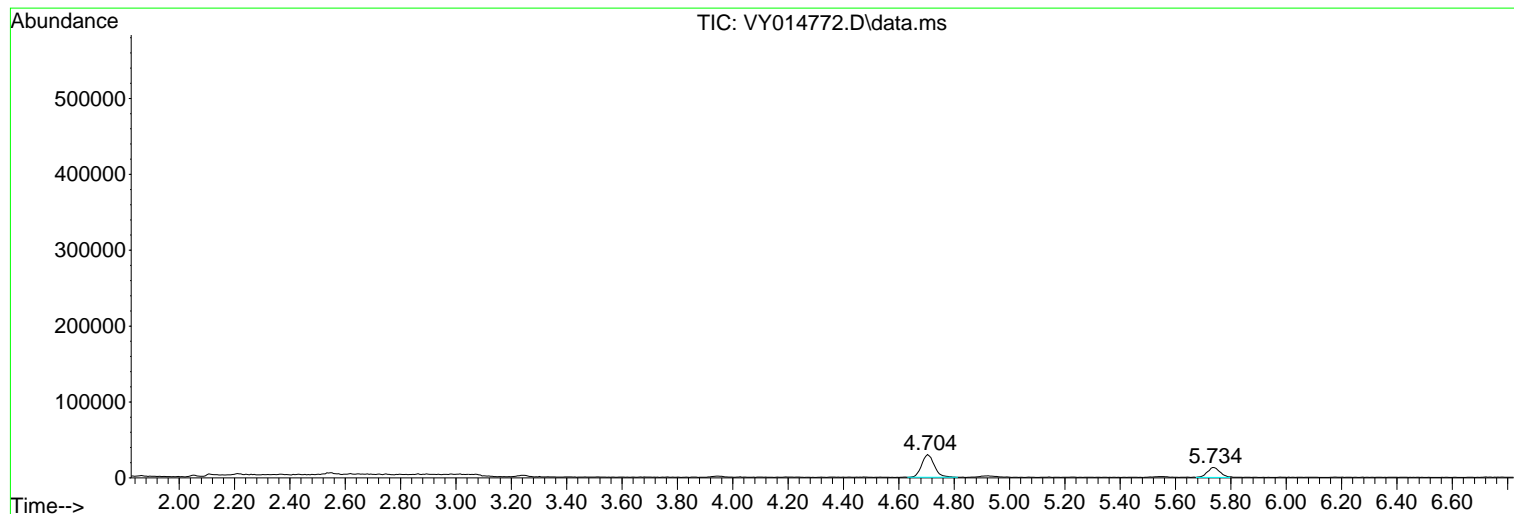
Sum of corrected areas: 5858123

Data Path : Z:\voasrv\HPCHEM1\MSVOA_Y\Data\VY072423\
Data File : VY014772.D
Acq On : 24 Jul 2023 15:07
Operator : SY/MD
Sample : 03706-05
Misc : 5.02g/5.0mL/MSVOA_Y/SOIL
ALS Vial : 13 Sample Multiplier: 1

Instrument :
MSVOA_Y
ClientSampleId :
B-P20A

Quant Method : Z:\voasrv\HPCHEM1\MSVOA_Y\methods\82Y071323S.M
Quant Title : SW846 8260

TIC Library : C:\Database\NIST20.L
TIC Integration Parameters: LSCINT.P



Data Path : Z:\voasrv\HPCHEM1\MSVOA_Y\Data\VY072423\
 Data File : VY014772.D
 Acq On : 24 Jul 2023 15:07
 Operator : SY/MD
 Sample : 03706-05
 Misc : 5.02g/5.0mL/MSVOA_Y/SOIL
 ALS Vial : 13 Sample Multiplier: 1

Instrument :
 MSVOA_Y
 ClientSampleId :
 B-P20A

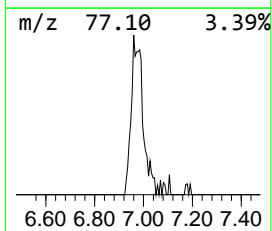
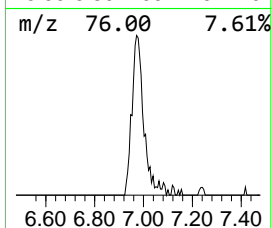
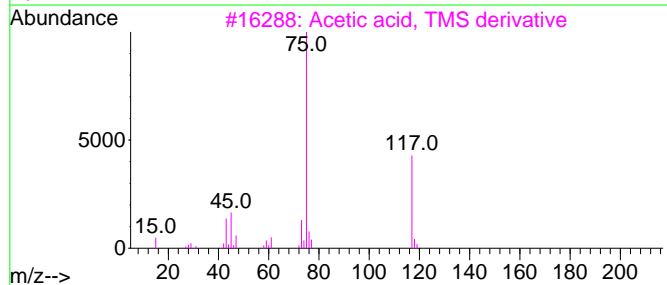
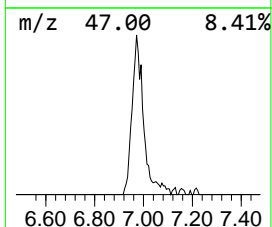
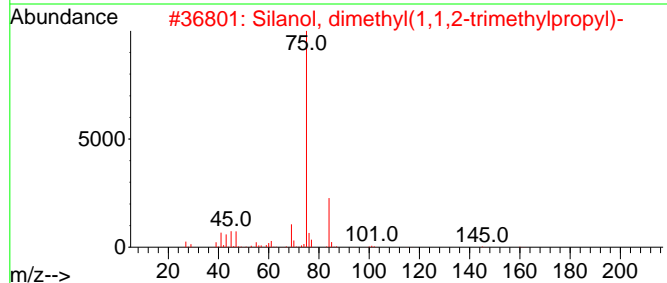
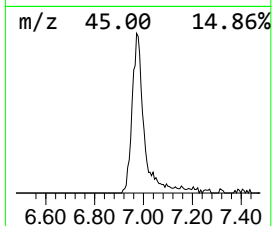
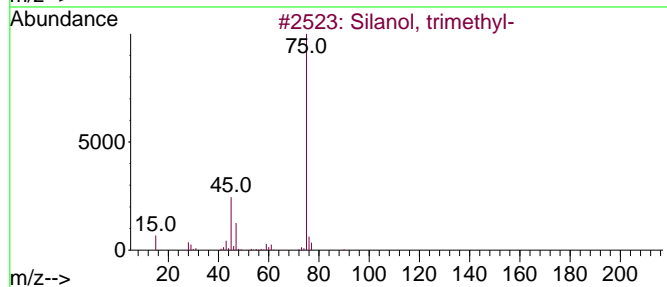
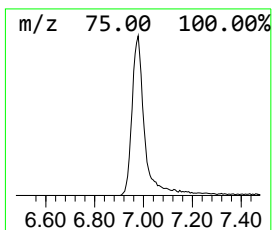
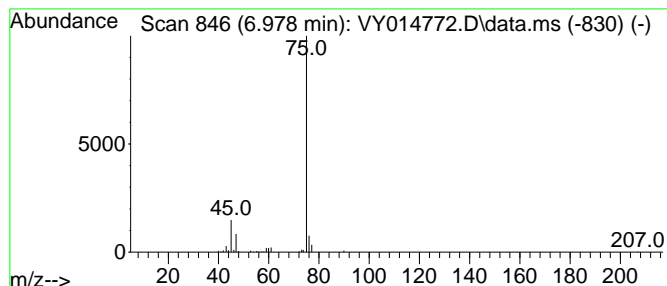
Quant Method : Z:\voasrv\HPCHEM1\MSVOA_Y\methods\82Y071323S.M
 Quant Title : SW846 8260

TIC Library : C:\Database\NIST20.L
 TIC Integration Parameters: LSCINT.P

 Peak Number 1 Silanol, trimethyl- Concentration Rank 1

R.T.	EstConc	Area	Relative to ISTD	R.T.
6.978	10.64 ug/l	115979	Pentafluorobenzene	7.783

Hit#	of	5	Tentative ID	MW	MolForm	CAS#	Qual
1			Silanol, trimethyl-	90	C3H10OSi	001066-40-6	91
2			Silanol, dimethyl(1,1,2-trimethyl...)	160	C8H20OSi	055644-10-5	78
3			Acetic acid, TMS derivative	132	C5H12O2Si	002754-27-0	78
4			2,2-Dimethyl-1-dimethyl(chlorome...)	194	C8H19ClOSi	1010217-05-9	43
5			Propanoic acid, TMS derivative	146	C6H14O2Si	016844-98-7	43



Data Path : Z:\voasrv\HPCHEM1\MSVOA_Y\Data\VY072423\
Data File : VY014772.D
Acq On : 24 Jul 2023 15:07
Operator : SY/MD
Sample : 03706-05
Misc : 5.02g/5.0mL/MSVOA_Y/SOIL
ALS Vial : 13 Sample Multiplier: 1

Instrument :
MSVOA_Y
ClientSampleId :
B-P20A

Quant Method : Z:\voasrv\HPCHEM1\MSVOA_Y\methods\82Y071323S.M
Quant Title : SW846 8260

TIC Library : C:\Database\NIST0.L
TIC Integration Parameters: LSCINT.P

TIC Top Hit name	RT	EstConc	Units	Response	--Internal Standard--			
					#	RT	Resp	Conc
----- Silanol, trimet...	6.978	10.6	ug/l	115979	1	7.783	545012	50.0