

Data Path : Z:\voasrv\HPCHEM1\MSVOA\_Y\Data\VY072524\  
 Data File : VY018920.D  
 Acq On : 25 Jul 2024 19:02  
 Operator : SY/MD  
 Sample : P3358-01  
 Misc : 5.04g/5.0mL/MSVOA\_Y/SOIL/A  
 ALS Vial : 11 Sample Multiplier: 1

Instrument :  
 MSVOA\_Y  
 ClientSampleId :

Quant Time: Jul 26 03:02:26 2024  
 Quant Method : Z:\voasrv\HPCHEM1\MSVOA\_Y\methods\82Y070924S.M  
 Quant Title : SW846 8260  
 QLast Update : Tue Jul 09 14:28:51 2024  
 Response via : Initial Calibration

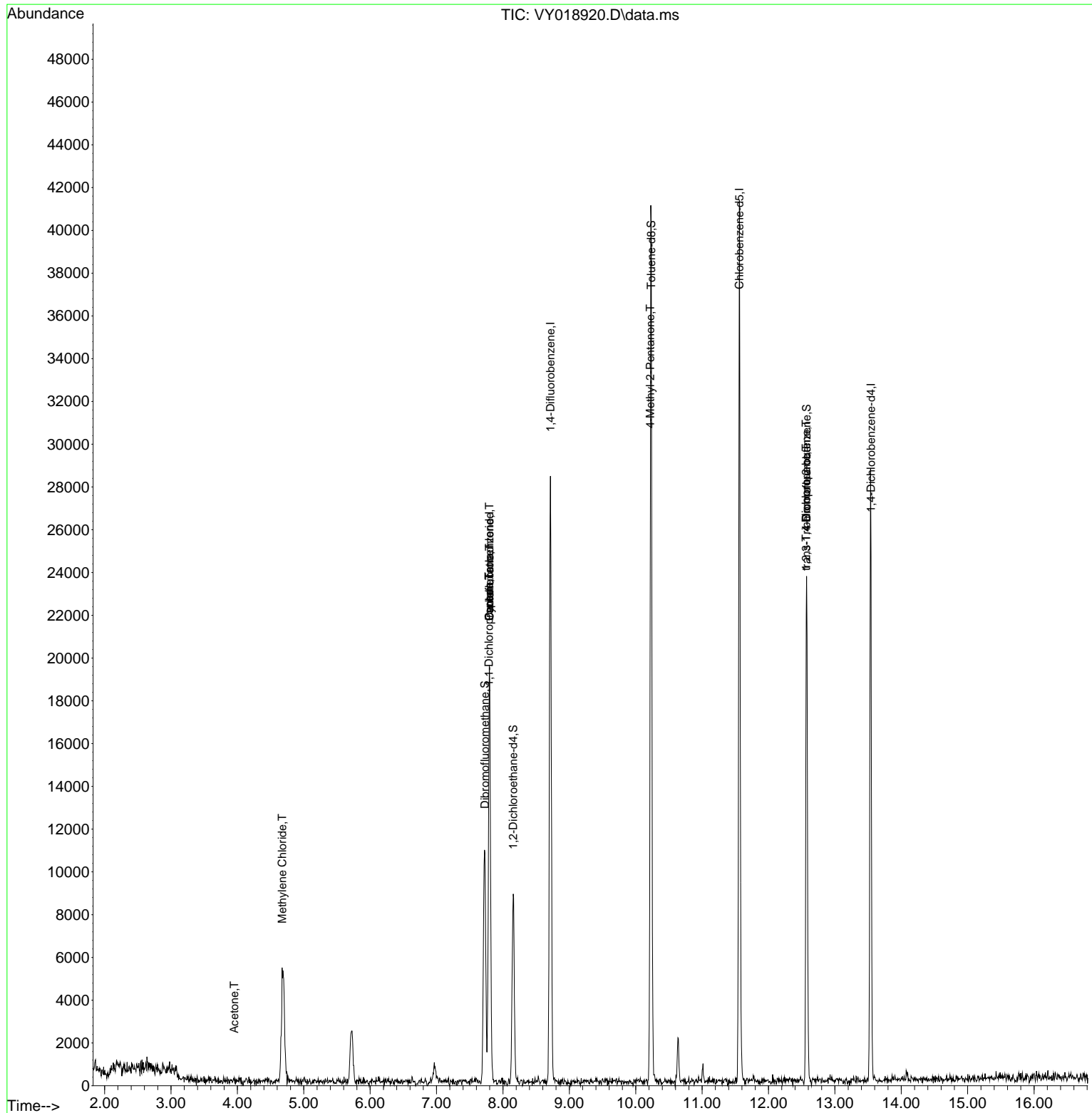
Compound	R.T.	QIon	Response	Conc	Units	Dev(Min)
-----						
Internal Standards						
1) Pentafluorobenzene	7.795	168	15388	50.000	ug/l	0.02
34) 1,4-Difluorobenzene	8.716	114	25301	50.000	ug/l	0.04
63) Chlorobenzene-d5	11.563	117	21191	50.000	ug/l	0.08
72) 1,4-Dichlorobenzene-d4	13.544	152	7992	50.000	ug/l	0.12
System Monitoring Compounds						
33) 1,2-Dichloroethane-d4	8.155	65	7263	47.966	ug/l	0.02
Spiked Amount	50.000	Range	50 - 163	Recovery	=	95.940%
35) Dibromofluoromethane	7.728	113	8139	51.361	ug/l	0.02
Spiked Amount	50.000	Range	54 - 147	Recovery	=	102.720%
50) Toluene-d8	10.234	98	27349	45.554	ug/l	0.06
Spiked Amount	50.000	Range	58 - 134	Recovery	=	91.100%
62) 4-Bromofluorobenzene	12.575	95	7431	36.244	ug/l	0.10
Spiked Amount	50.000	Range	30 - 143	Recovery	=	72.480%
Target Compounds						
					Qvalue	
16) Acetone	3.954	43	43	1.540	ug/l #	36
20) Methylene Chloride	4.674	84	4480	25.949	ug/l #	81
31) Cyclohexane	7.795	56	286	1.229	ug/l #	1
36) 1,1-Dichloropropene	7.789	75	1018	4.655	ug/l #	40
38) Carbon Tetrachloride	7.795	117	1741	6.610	ug/l #	13
51) 4-Methyl-2-Pentanone	10.221	43	150	1.624	ug/l #	14
76) 1,2,3-Trichloropropane	12.569	75	4654	74.351	ug/l #	100
81) trans-1,4-Dichloro-2-b...	12.569	75	4654	166.402	ug/l #	16
-----						

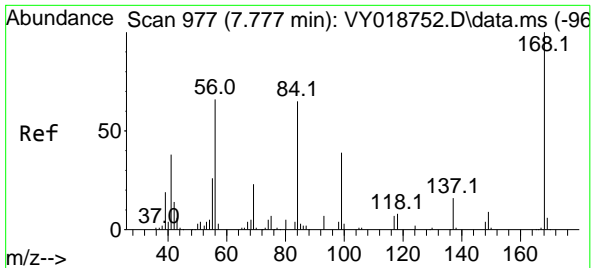
(#) = qualifier out of range (m) = manual integration (+) = signals summed

Data Path : Z:\voasrv\HPCHEM1\MSVOA\_Y\Data\VY072524\  
 Data File : VY018920.D  
 Acq On : 25 Jul 2024 19:02  
 Operator : SY/MD  
 Sample : P3358-01  
 Misc : 5.04g/5.0mL/MSVOA\_Y/SOIL/A  
 ALS Vial : 11 Sample Multiplier: 1

Instrument :  
 MSVOA\_Y  
 ClientSampleId :

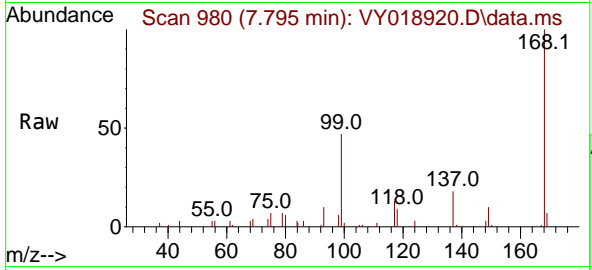
Quant Time: Jul 26 03:02:26 2024  
 Quant Method : Z:\voasrv\HPCHEM1\MSVOA\_Y\methods\82Y070924S.M  
 Quant Title : SW846 8260  
 QLast Update : Tue Jul 09 14:28:51 2024  
 Response via : Initial Calibration



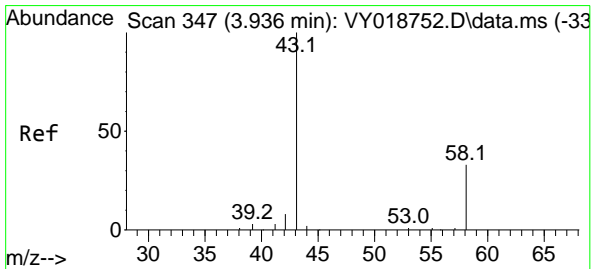
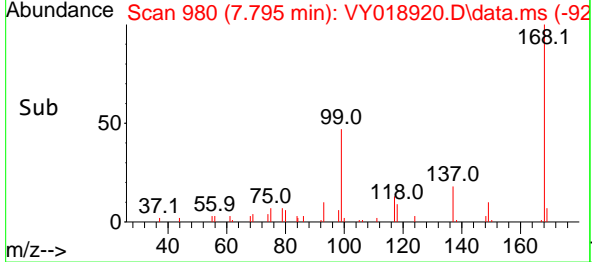
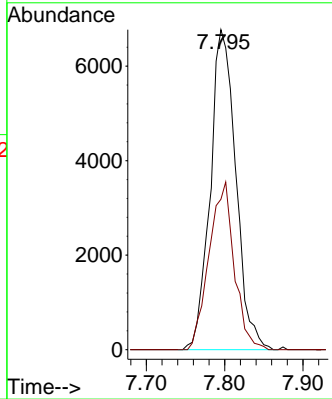


#1  
 Pentafluorobenzene  
 Concen: 50.000 ug/l  
 RT: 7.795 min Scan# 91  
 Delta R.T. 0.018 min  
 Lab File: VY018920.D  
 Acq: 25 Jul 2024 19:02

Instrument : MSVOA\_Y  
 ClientSampleId :

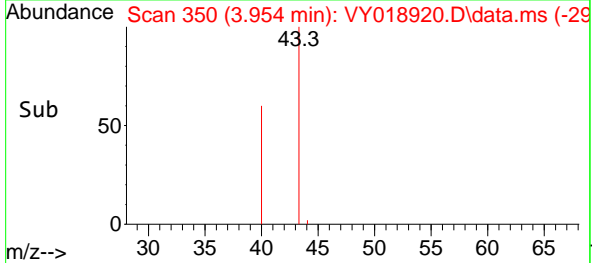
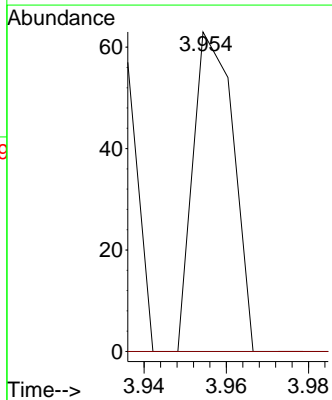
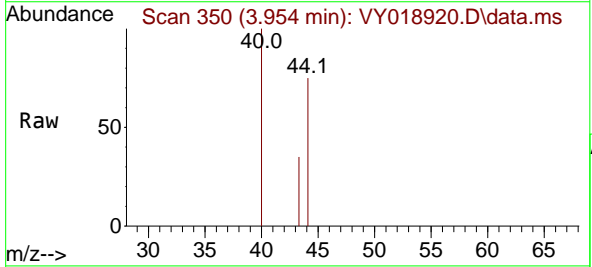


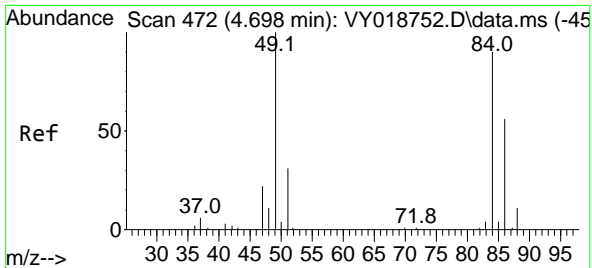
Tgt Ion:168 Resp: 15388  
 Ion Ratio Lower Upper  
 168 100  
 99 47.0 39.1 58.7



#16  
 Acetone  
 Concen: 1.540 ug/l  
 RT: 3.954 min Scan# 350  
 Delta R.T. 0.018 min  
 Lab File: VY018920.D  
 Acq: 25 Jul 2024 19:02

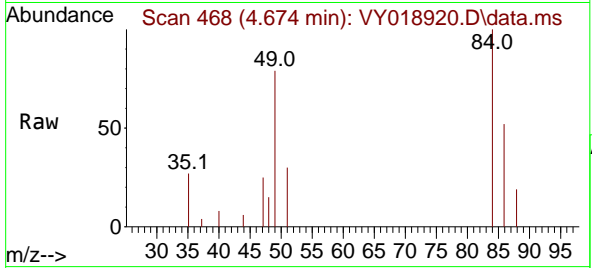
Tgt Ion: 43 Resp: 43  
 Ion Ratio Lower Upper  
 43 100  
 58 0.0 31.7 47.5#





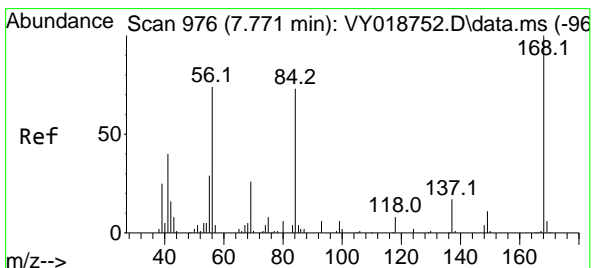
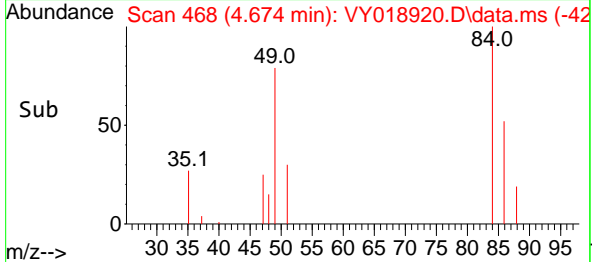
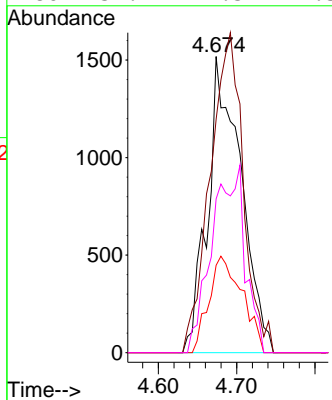
#20  
 Methylene Chloride  
 Concen: 25.949 ug/l  
 RT: 4.674 min Scan# 410  
 Delta R.T. -0.024 min  
 Lab File: VY018920.D  
 Acq: 25 Jul 2024 19:02

Instrument : MSVOA\_Y  
 ClientSampleId :



Tgt Ion: 84 Resp: 4480

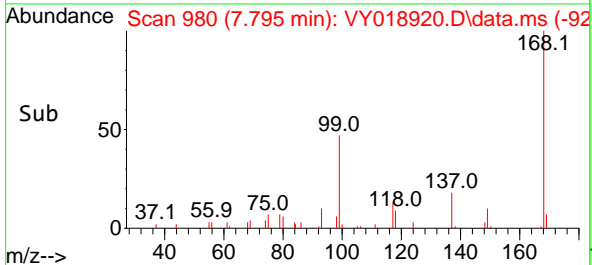
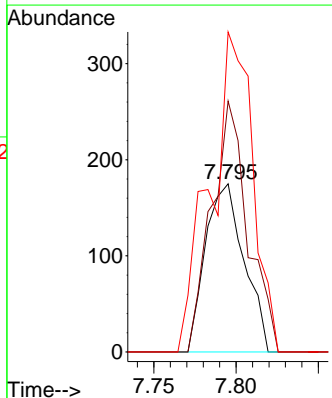
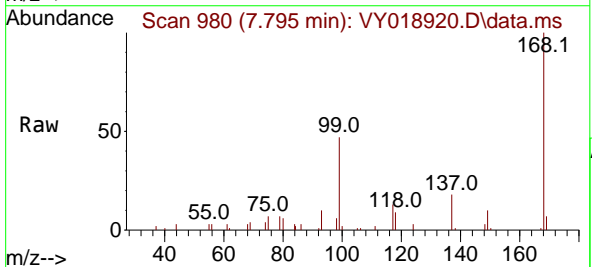
Ion	Ratio	Lower	Upper
84	100		
49	78.8	84.4	126.6#
51	29.5	26.0	39.0
86	51.9	49.5	74.3

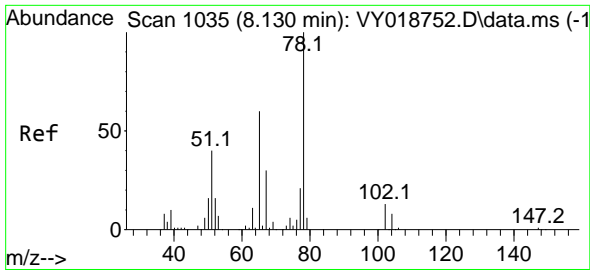


#31  
 Cyclohexane  
 Concen: 1.229 ug/l  
 RT: 7.795 min Scan# 980  
 Delta R.T. 0.024 min  
 Lab File: VY018920.D  
 Acq: 25 Jul 2024 19:02

Tgt Ion: 56 Resp: 286

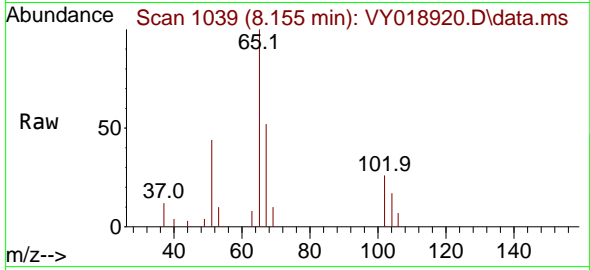
Ion	Ratio	Lower	Upper
56	100		
69	149.1	28.7	43.1#
84	190.3	77.7	116.5#



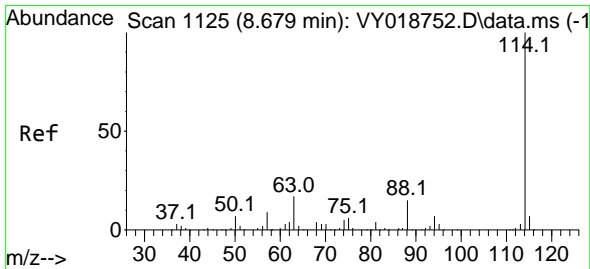
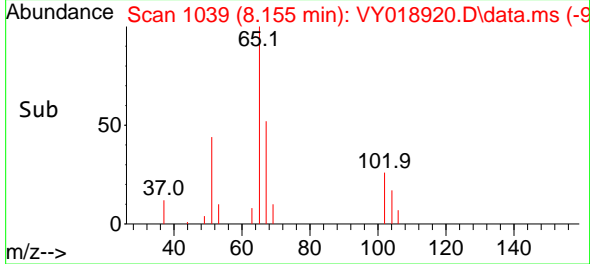
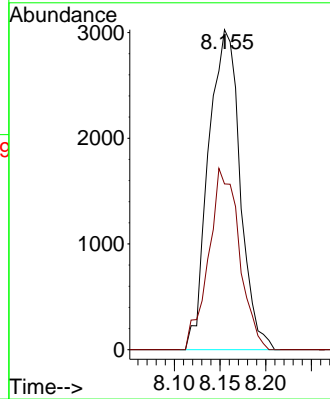


#33  
 1,2-Dichloroethane-d4  
 Concen: 47.966 ug/l  
 RT: 8.155 min Scan# 1103  
 Delta R.T. 0.024 min  
 Lab File: VY018920.D  
 Acq: 25 Jul 2024 19:02

Instrument :  
 MSVOA\_Y  
 ClientSampleId :

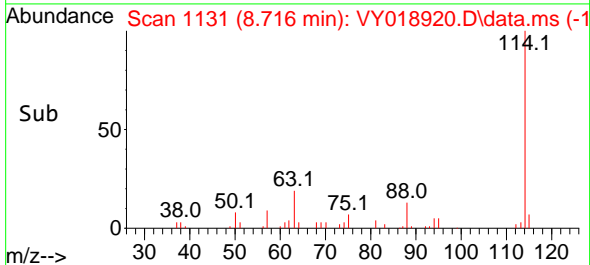
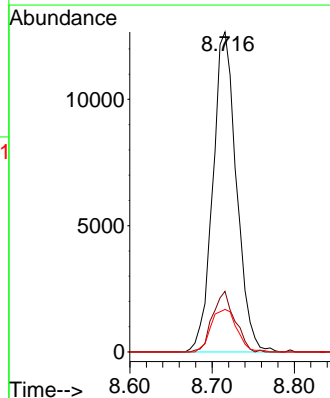
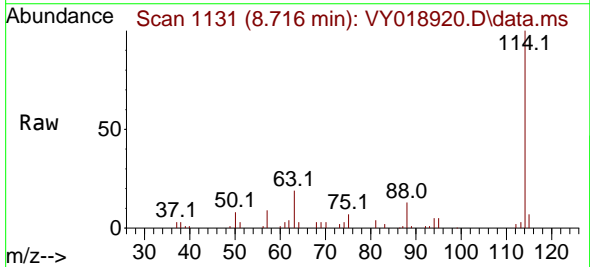


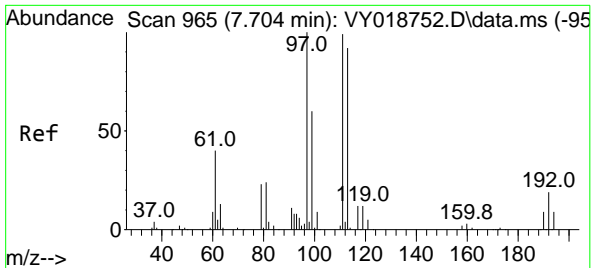
Tgt Ion: 65 Resp: 7263  
 Ion Ratio Lower Upper  
 65 100  
 67 55.1 0.0 109.6



#34  
 1,4-Difluorobenzene  
 Concen: 50.000 ug/l  
 RT: 8.716 min Scan# 1131  
 Delta R.T. 0.037 min  
 Lab File: VY018920.D  
 Acq: 25 Jul 2024 19:02

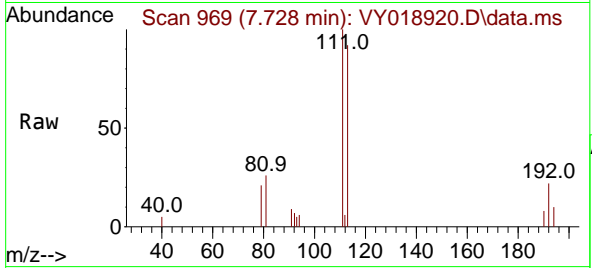
Tgt Ion: 114 Resp: 25301  
 Ion Ratio Lower Upper  
 114 100  
 63 18.9 0.0 35.0  
 88 13.3 0.0 27.2





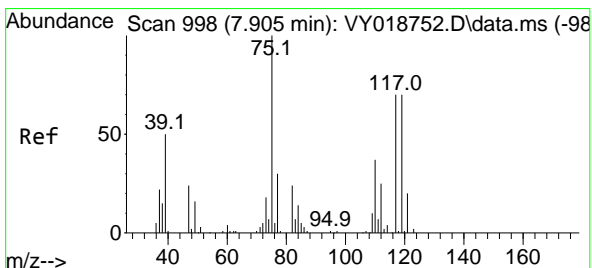
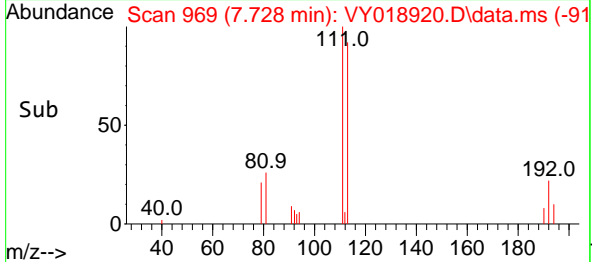
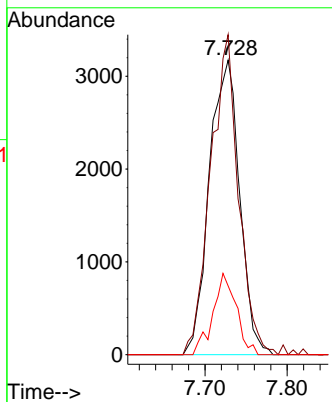
#35  
 Dibromofluoromethane  
 Concen: 51.361 ug/l  
 RT: 7.728 min Scan# 901  
 Delta R.T. 0.024 min  
 Lab File: VY018920.D  
 Acq: 25 Jul 2024 19:02

Instrument :  
 MSVOA\_Y  
 ClientSampleId :



Tgt Ion: 113 Resp: 8139

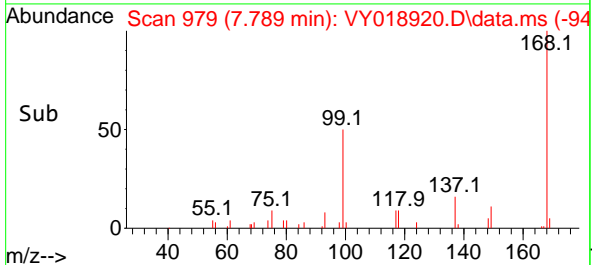
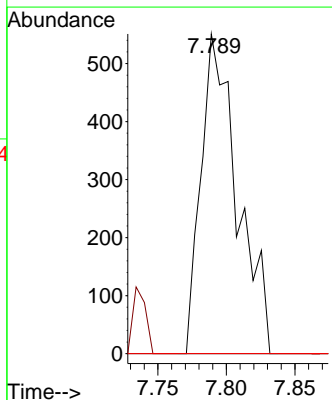
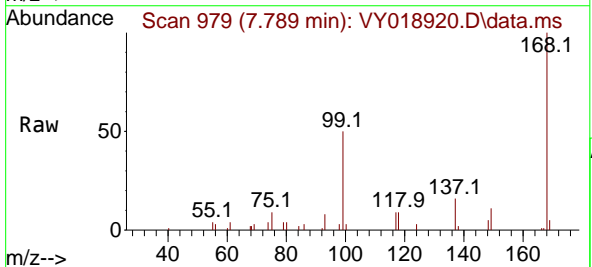
Ion	Ratio	Lower	Upper
113	100		
111	100.0	82.2	123.4
192	21.2	15.9	23.9

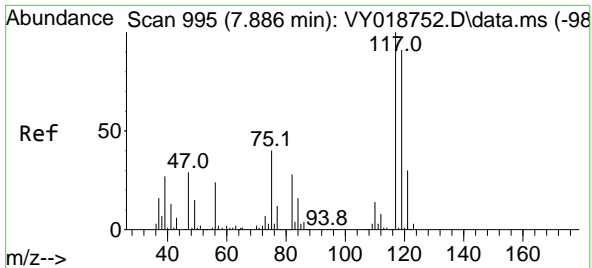


#36  
 1,1-Dichloropropene  
 Concen: 4.655 ug/l  
 RT: 7.789 min Scan# 979  
 Delta R.T. -0.116 min  
 Lab File: VY018920.D  
 Acq: 25 Jul 2024 19:02

Tgt Ion: 75 Resp: 1018

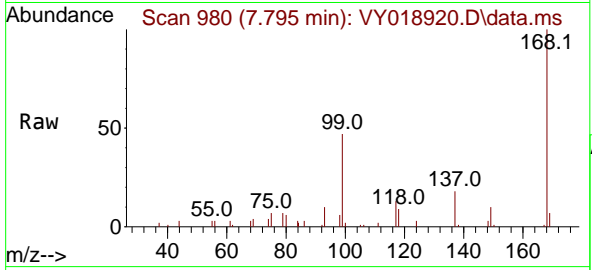
Ion	Ratio	Lower	Upper
75	100		
110	0.0	19.0	57.0#
77	0.0	25.3	37.9#



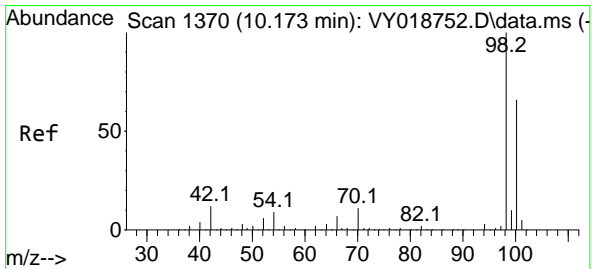
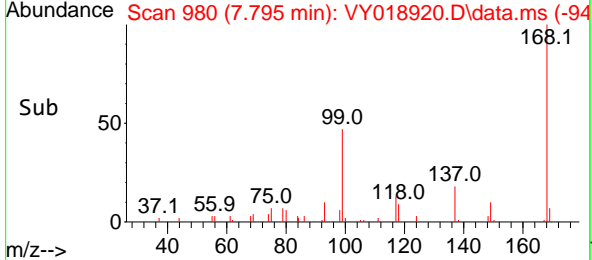
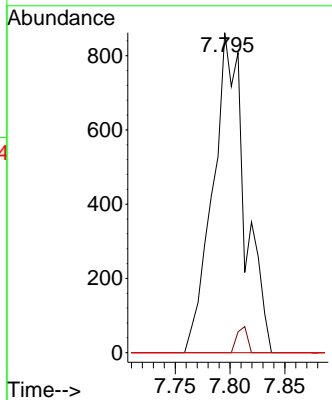


#38  
 Carbon Tetrachloride  
 Concen: 6.610 ug/l  
 RT: 7.795 min Scan# 91  
 Delta R.T. -0.091 min  
 Lab File: VY018920.D  
 Acq: 25 Jul 2024 19:02

Instrument :  
 MSVOA\_Y  
 ClientSampleId :

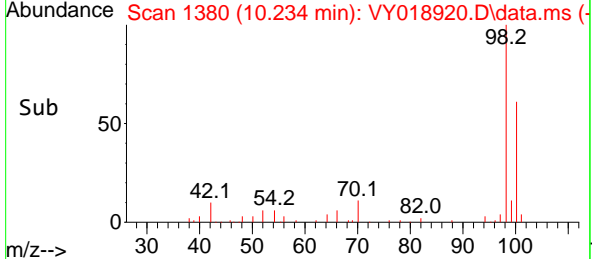
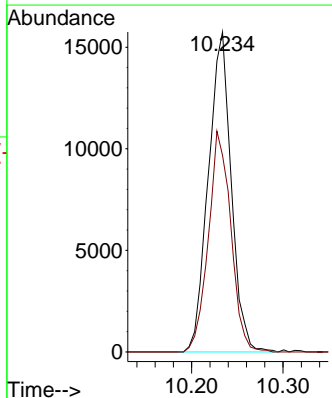
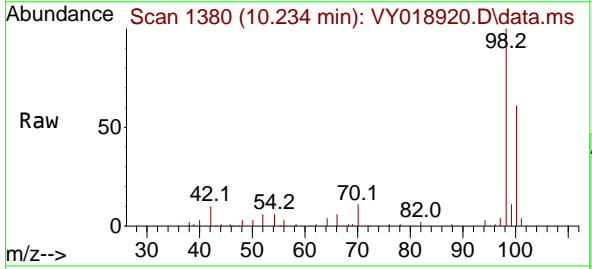


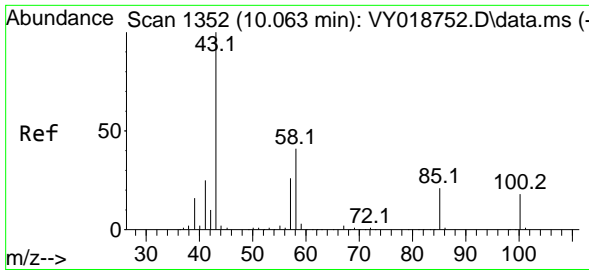
Tgt Ion:117 Resp: 1741  
 Ion Ratio Lower Upper  
 117 100  
 119 0.0 75.8 113.6#  
 121 0.0 24.0 36.0#



#50  
 Toluene-d8  
 Concen: 45.554 ug/l  
 RT: 10.234 min Scan# 1380  
 Delta R.T. 0.061 min  
 Lab File: VY018920.D  
 Acq: 25 Jul 2024 19:02

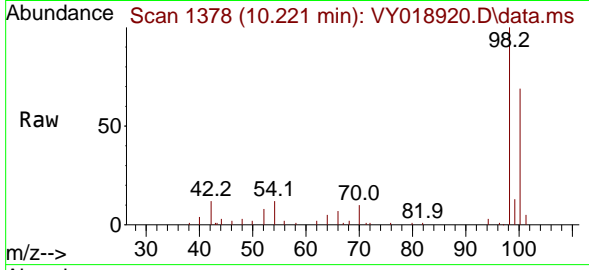
Tgt Ion: 98 Resp: 27349  
 Ion Ratio Lower Upper  
 98 100  
 100 67.9 52.0 78.0



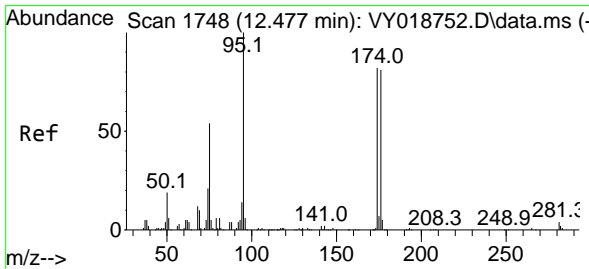
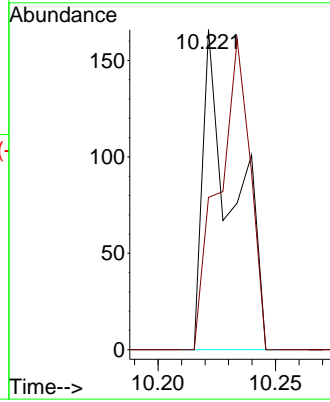
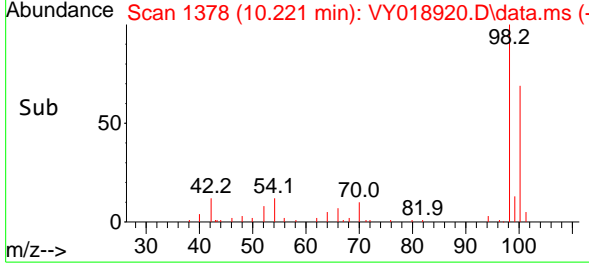


#51  
 4-Methyl-2-Pentanone  
 Concen: 1.624 ug/l  
 RT: 10.221 min Scan# 11  
 Delta R.T. 0.158 min  
 Lab File: VY018920.D  
 Acq: 25 Jul 2024 19:02

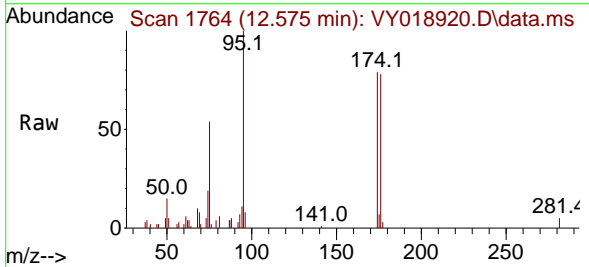
Instrument :  
 MSVOA\_Y  
 ClientSampleId :



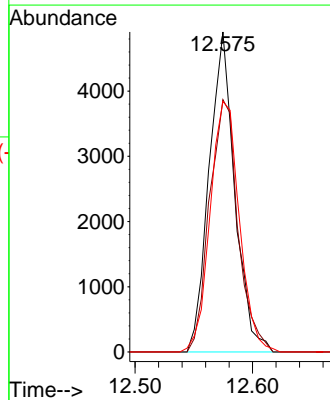
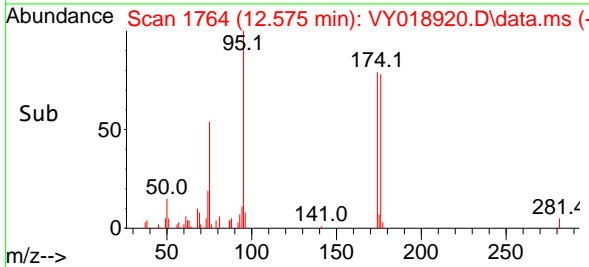
Tgt Ion: 43 Resp: 150  
 Ion Ratio Lower Upper  
 43 100  
 58 100.7 35.7 53.5#



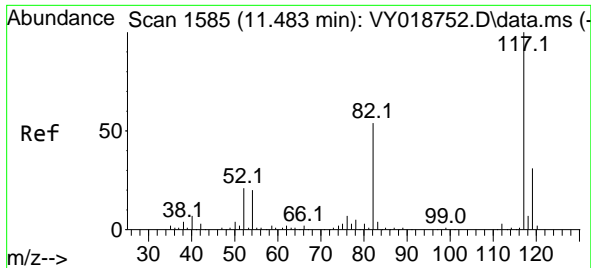
#62  
 4-Bromofluorobenzene  
 Concen: 36.244 ug/l  
 RT: 12.575 min Scan# 1764  
 Delta R.T. 0.098 min  
 Lab File: VY018920.D  
 Acq: 25 Jul 2024 19:02



Tgt Ion: 95 Resp: 7431  
 Ion Ratio Lower Upper  
 95 100  
 174 87.6 0.0 175.6  
 176 89.0 0.0 171.4

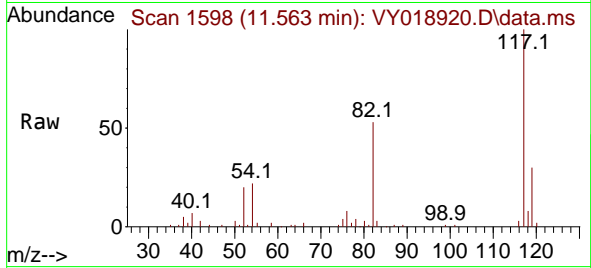






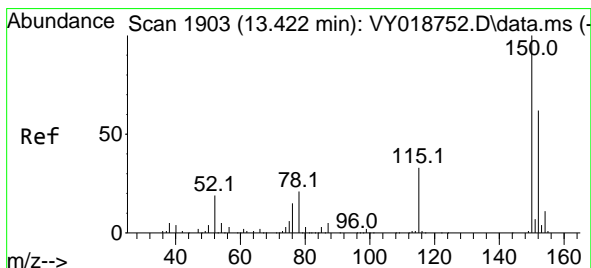
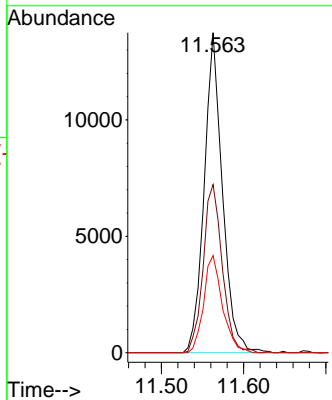
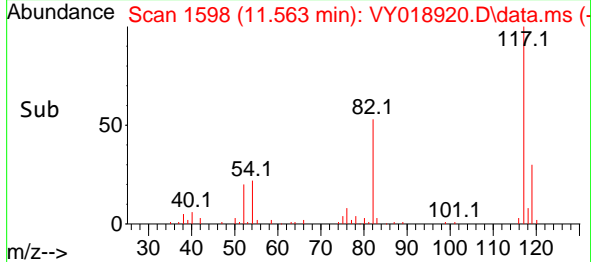
#63  
 Chlorobenzene-d5  
 Concen: 50.000 ug/l  
 RT: 11.563 min Scan# 1117  
 Delta R.T. 0.079 min  
 Lab File: VY018920.D  
 Acq: 25 Jul 2024 19:02

Instrument :  
 MSVOA\_Y  
 ClientSampleId :

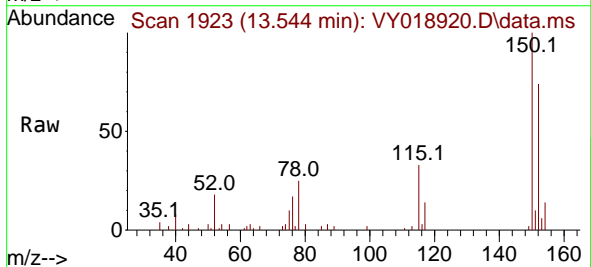


Tgt Ion:117 Resp: 21191

Ion	Ratio	Lower	Upper
117	100		
82	52.6	42.4	63.6
119	30.3	25.9	38.9

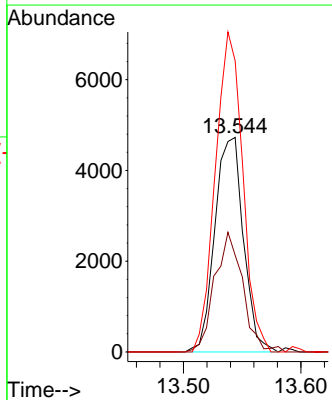
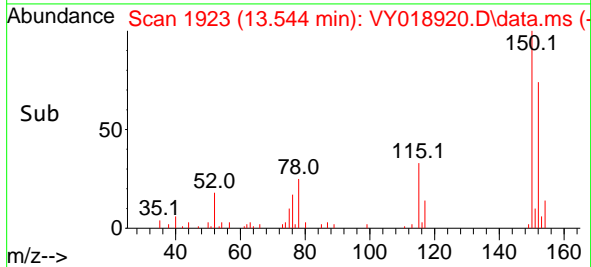


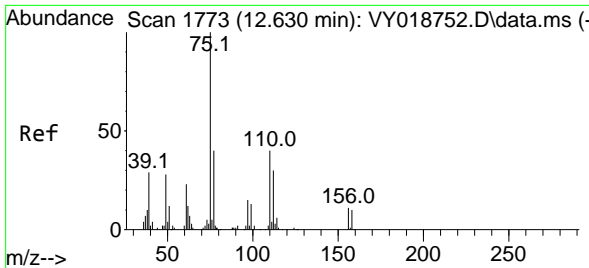
#72  
 1,4-Dichlorobenzene-d4  
 Concen: 50.000 ug/l  
 RT: 13.544 min Scan# 1923  
 Delta R.T. 0.122 min  
 Lab File: VY018920.D  
 Acq: 25 Jul 2024 19:02



Tgt Ion:152 Resp: 7992

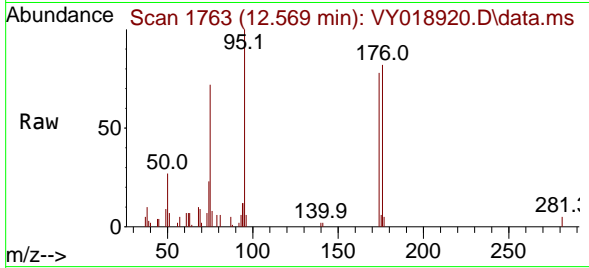
Ion	Ratio	Lower	Upper
152	100		
115	54.6	28.2	84.7
150	142.9	0.0	345.6



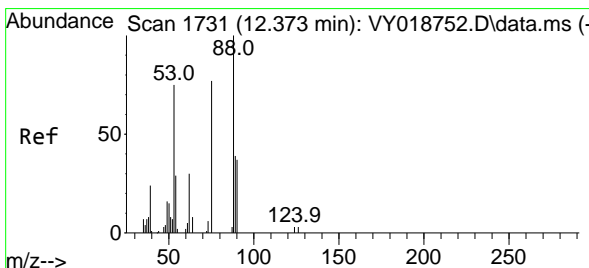
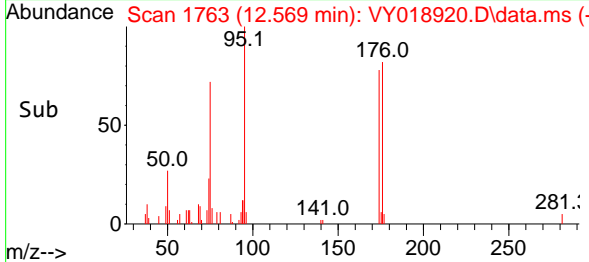
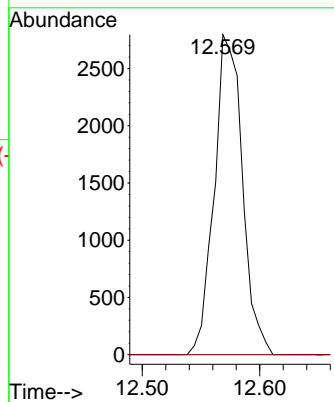


#76  
 1,2,3-Trichloropropane  
 Concen: 74.351 ug/l  
 RT: 12.569 min Scan# 1763  
 Delta R.T. -0.061 min  
 Lab File: VY018920.D  
 Acq: 25 Jul 2024 19:02

Instrument :  
 MSVOA\_Y  
 ClientSampleId :



Tgt Ion: 75 Resp: 4654  
 Ion Ratio Lower Upper  
 75 100  
 77 0.0 0.0 0.0



#81  
 trans-1,4-Dichloro-2-butene  
 Concen: 166.402 ug/l  
 RT: 12.569 min Scan# 1763  
 Delta R.T. 0.195 min  
 Lab File: VY018920.D  
 Acq: 25 Jul 2024 19:02

Tgt Ion: 75 Resp: 4654  
 Ion Ratio Lower Upper  
 75 100  
 53 0.0 66.8 100.2#  
 89 0.0 35.8 53.6#

