

Data Path : Z:\voasrv\HPCHEM1\MSVOA\_Y\Data\VY072621\  
 Data File : VY005449.D  
 Acq On : 26 Jul 2021 16:58  
 Operator : SY/MD  
 Sample : M3151-02RE  
 Misc : 5.11G/5ML/MSVOA\_Y/SOIL  
 ALS Vial : 11 Sample Multiplier: 1

Instrument :  
 MSVOA\_Y  
 ClientSampled :

Quant Time: Jul 27 03:11:19 2021  
 Quant Method : Z:\voasrv\HPCHEM1\MSVOA\_Y\methods\82Y072221S.M  
 Quant Title : SW846 8260  
 QLast Update : Fri Jul 23 06:20:14 2021  
 Response via : Initial Calibration

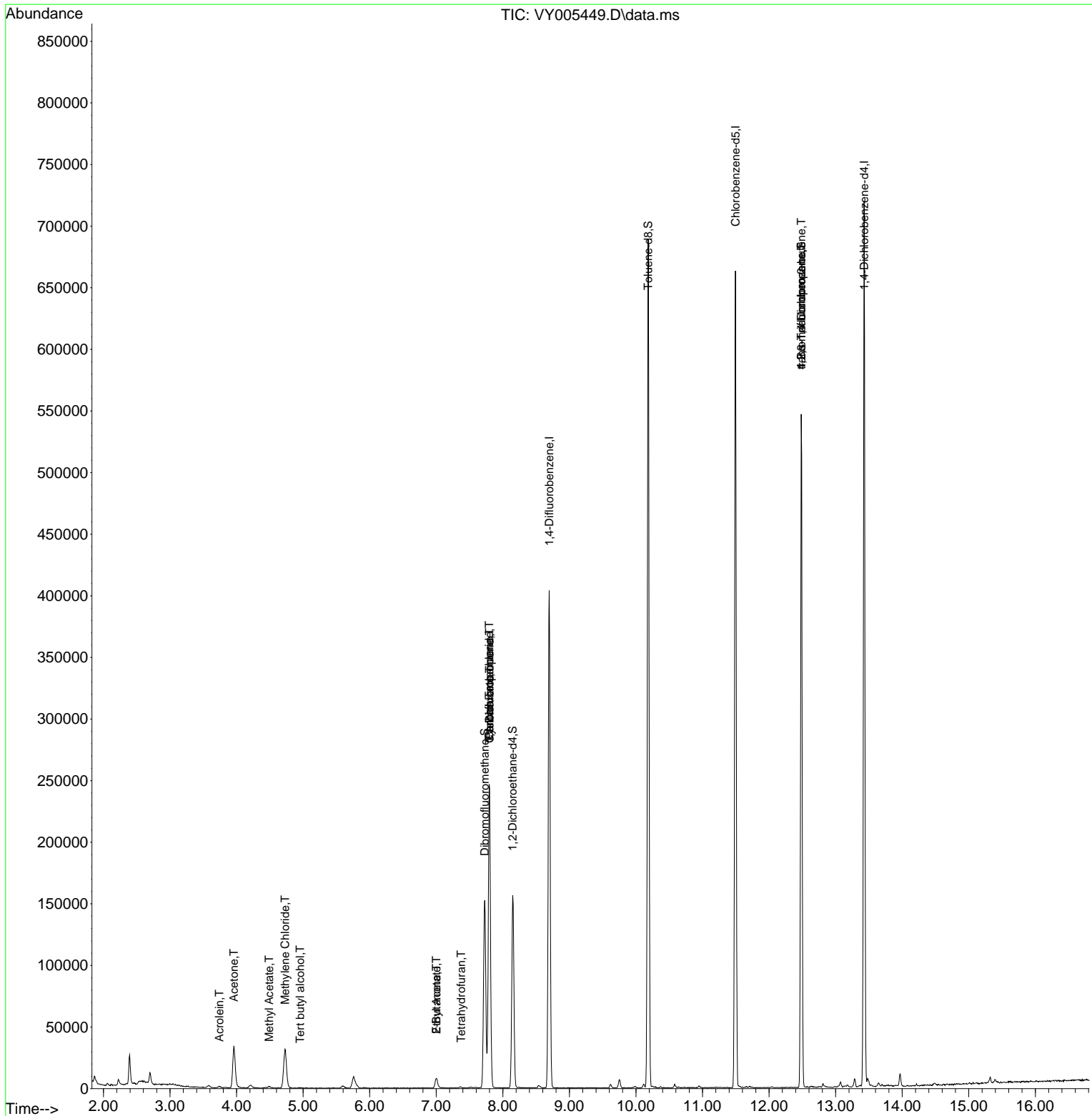
Compound	R.T.	QIon	Response	Conc	Units	Dev(Min)
-----						
Internal Standards						
1) Pentafluorobenzene	7.795	168	201556	50.000	ug/l	0.00
34) 1,4-Difluorobenzene	8.697	114	345962	50.000	ug/l	0.00
63) Chlorobenzene-d5	11.496	117	348323	50.000	ug/l	0.00
72) 1,4-Dichlorobenzene-d4	13.428	152	179603	50.000	ug/l	0.00
System Monitoring Compounds						
33) 1,2-Dichloroethane-d4	8.149	65	127844	59.371	ug/l	0.00
Spiked Amount	50.000	Range	50 - 163	Recovery	=	118.740%
35) Dibromofluoromethane	7.728	113	104933	52.529	ug/l	0.00
Spiked Amount	50.000	Range	54 - 147	Recovery	=	105.060%
50) Toluene-d8	10.185	98	439665	51.929	ug/l	0.00
Spiked Amount	50.000	Range	49 - 140	Recovery	=	103.860%
62) 4-Bromofluorobenzene	12.483	95	154990	55.465	ug/l	0.00
Spiked Amount	50.000	Range	25 - 144	Recovery	=	110.940%
Target Compounds						
					Qvalue	
11) Tert butyl alcohol	4.954	59	211	1.037	ug/l #	82
13) Acrolein	3.741	56	1510	8.106	ug/l	94
16) Acetone	3.960	43	57881	117.704	ug/l	96
18) Methyl Acetate	4.491	43	2445	1.769	ug/l	97
20) Methylene Chloride	4.728	84	23615	7.291	ug/l	98
25) 2-Butanone	7.002	43	13612	18.484	ug/l	99
29) Tetrahydrofuran	7.374	42	597	1.224	ug/l	91
31) Cyclohexane	7.801	56	4351	1.183	ug/l #	15
36) 1,1-Dichloropropene	7.801	75	14084	4.210	ug/l #	51
37) Ethyl Acetate	7.002	43	13612	6.685	ug/l #	70
38) Carbon Tetrachloride	7.795	117	18350	5.020	ug/l #	16
76) 1,2,3-Trichloropropane	12.483	75	85939	48.629	ug/l #	100
81) trans-1,4-Dichloro-2-b...	12.483	75	85939	94.423	ug/l #	11
-----						

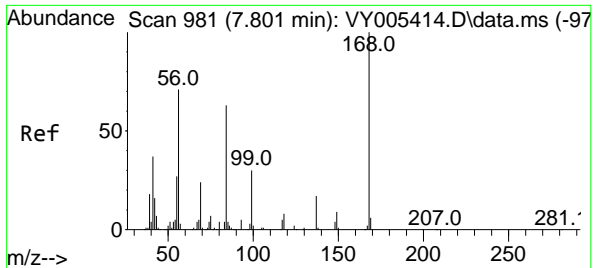
(#) = qualifier out of range (m) = manual integration (+) = signals summed

Data Path : Z:\voasrv\HPCHEM1\MSVOA\_Y\Data\VY072621\  
 Data File : VY005449.D  
 Acq On : 26 Jul 2021 16:58  
 Operator : SY/MD  
 Sample : M3151-02RE  
 Misc : 5.11G/5ML/MSVOA\_Y/SOIL  
 ALS Vial : 11 Sample Multiplier: 1

Instrument :  
 MSVOA\_Y  
 ClientSampled :

Quant Time: Jul 27 03:11:19 2021  
 Quant Method : Z:\voasrv\HPCHEM1\MSVOA\_Y\methods\82Y072221S.M  
 Quant Title : SW846 8260  
 QLast Update : Fri Jul 23 06:20:14 2021  
 Response via : Initial Calibration

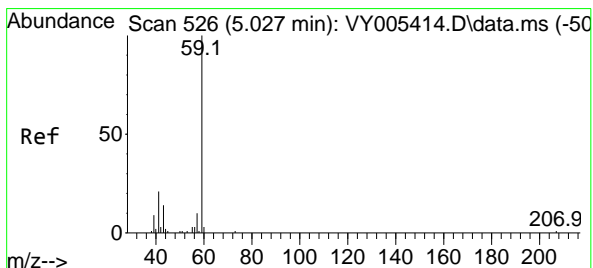
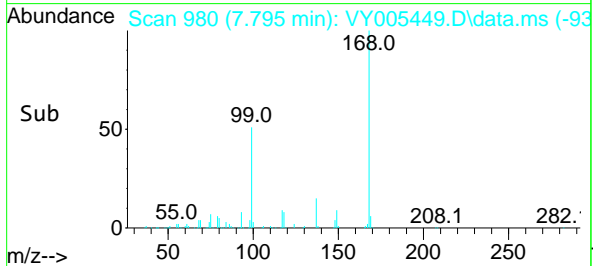
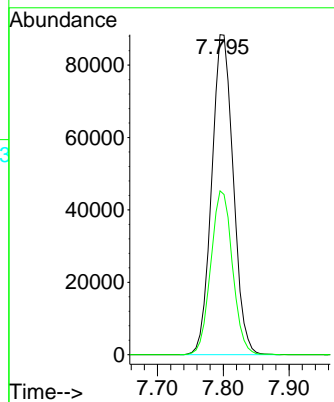
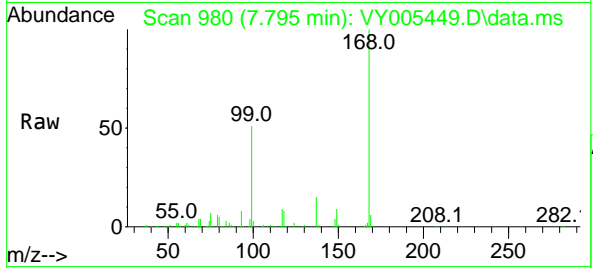




#1  
 Pentafluorobenzene  
 Concen: 50.000 ug/l  
 RT: 7.795 min Scan# 980  
 Delta R.T. -0.006 min  
 Lab File: VY005449.D  
 Acq: 26 Jul 2021 16:58

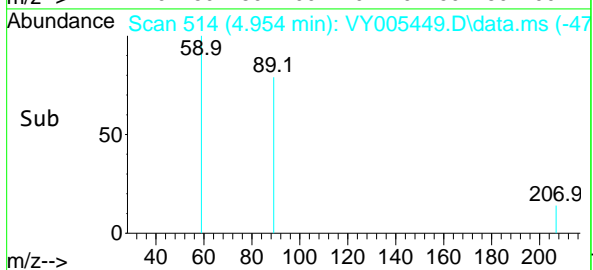
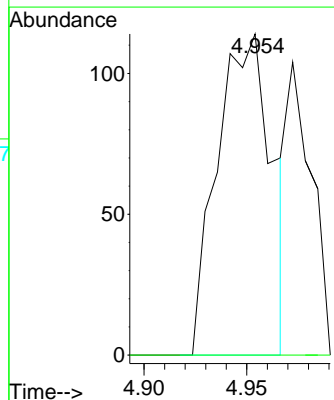
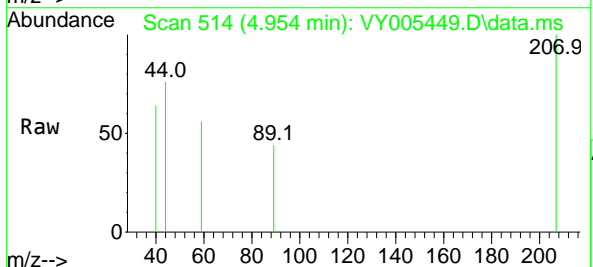
Instrument :  
 MSVOA\_Y  
 ClientSampleId :

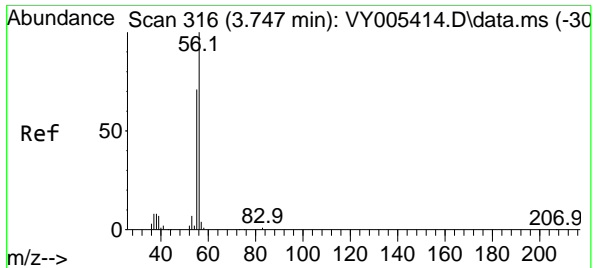
Tgt Ion:168 Resp: 201556  
 Ion Ratio Lower Upper  
 168 100  
 99 51.2 39.8 59.6



#11  
 Tert butyl alcohol  
 Concen: 1.037 ug/l  
 RT: 4.954 min Scan# 514  
 Delta R.T. -0.073 min  
 Lab File: VY005449.D  
 Acq: 26 Jul 2021 16:58

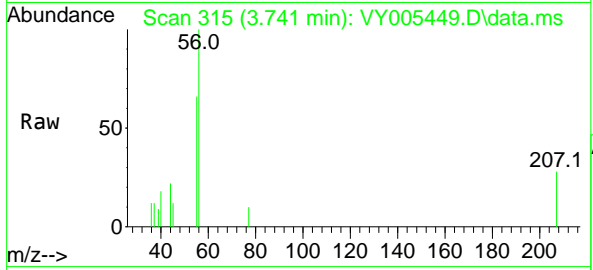
Tgt Ion: 59 Resp: 211  
 Ion Ratio Lower Upper  
 59 100  
 57 0.0 4.7 7.1#



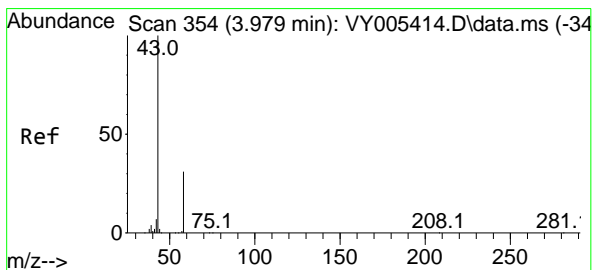
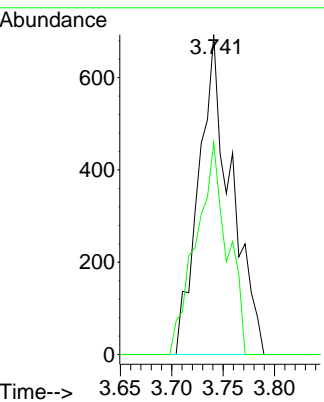
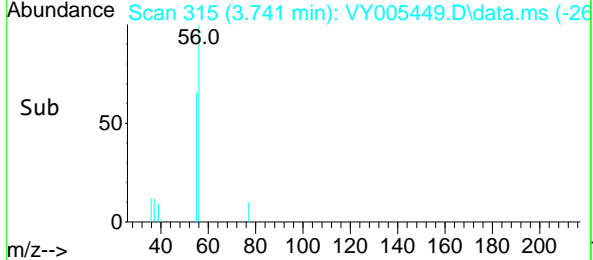


#13  
 Acrolein  
 Concen: 8.106 ug/l  
 RT: 3.741 min Scan# 315  
 Delta R.T. -0.006 min  
 Lab File: VY005449.D  
 Acq: 26 Jul 2021 16:58

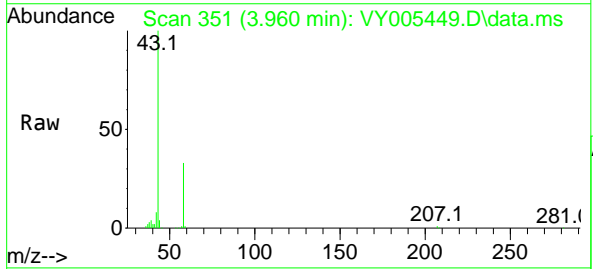
Instrument :  
 MSVOA\_Y  
 ClientSampled :



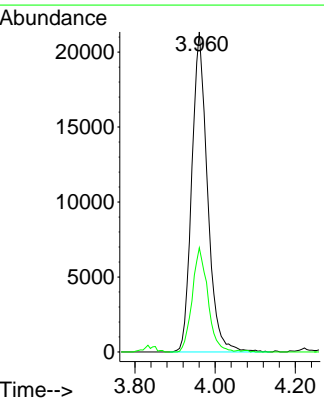
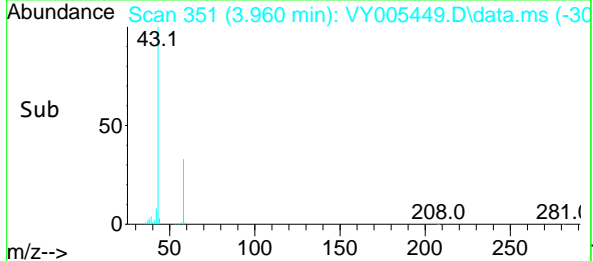
Tgt Ion: 56 Resp: 1510  
 Ion Ratio Lower Upper  
 56 100  
 55 64.2 55.2 82.8

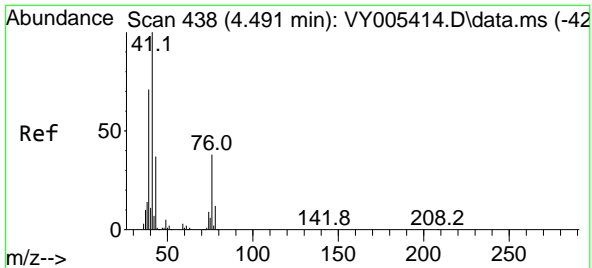


#16  
 Acetone  
 Concen: 117.704 ug/l  
 RT: 3.960 min Scan# 351  
 Delta R.T. -0.018 min  
 Lab File: VY005449.D  
 Acq: 26 Jul 2021 16:58



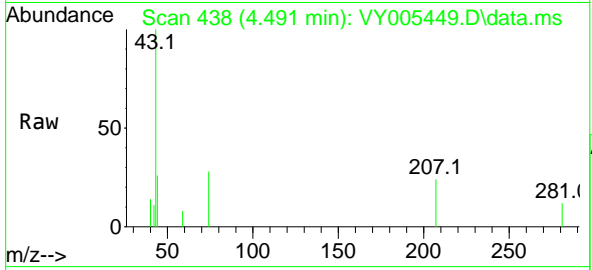
Tgt Ion: 43 Resp: 57881  
 Ion Ratio Lower Upper  
 43 100  
 58 32.5 24.5 36.7



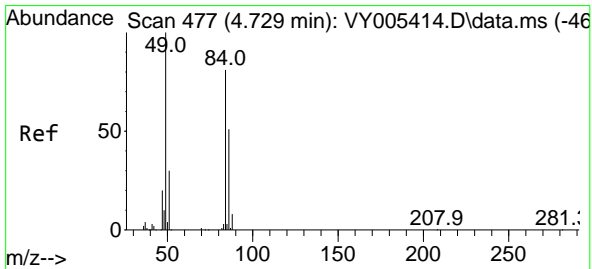
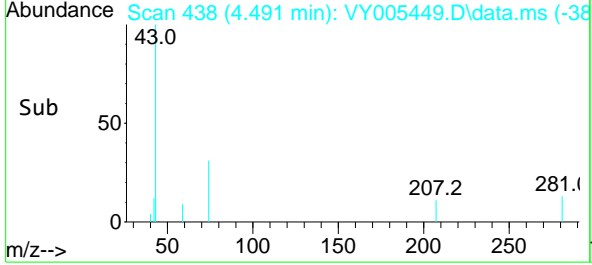
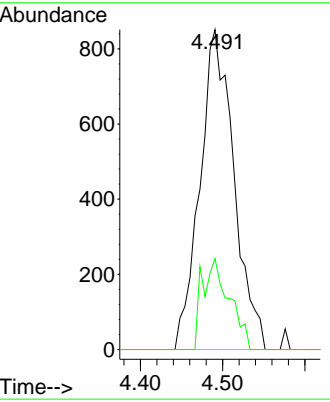


#18  
 Methyl Acetate  
 Concen: 1.769 ug/l  
 RT: 4.491 min Scan# 438  
 Delta R.T. -0.000 min  
 Lab File: VY005449.D  
 Acq: 26 Jul 2021 16:58

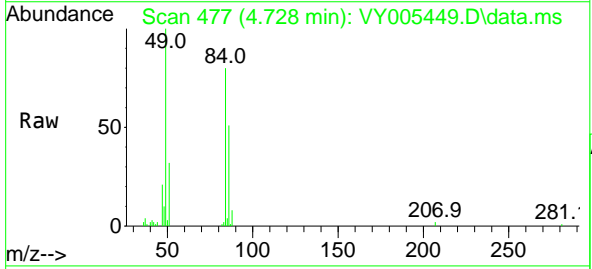
Instrument :  
 MSVOA\_Y  
 ClientSampled :



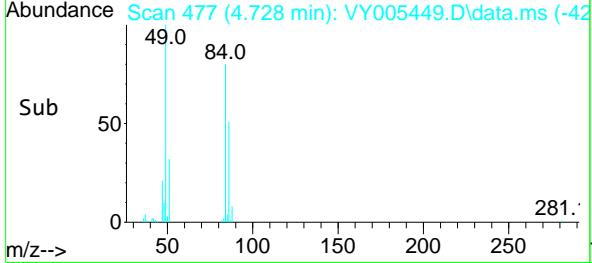
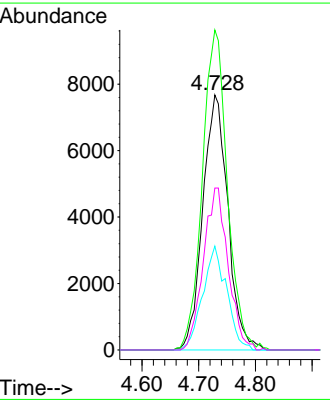
Tgt Ion: 43 Resp: 2445  
 Ion Ratio Lower Upper  
 43 100  
 74 22.6 19.2 28.8

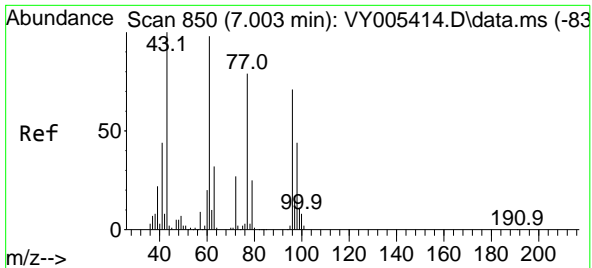


#20  
 Methylene Chloride  
 Concen: 7.291 ug/l  
 RT: 4.728 min Scan# 477  
 Delta R.T. -0.001 min  
 Lab File: VY005449.D  
 Acq: 26 Jul 2021 16:58



Tgt Ion: 84 Resp: 23615  
 Ion Ratio Lower Upper  
 84 100  
 49 125.5 98.9 148.3  
 51 40.7 30.0 45.0  
 86 63.5 50.4 75.6

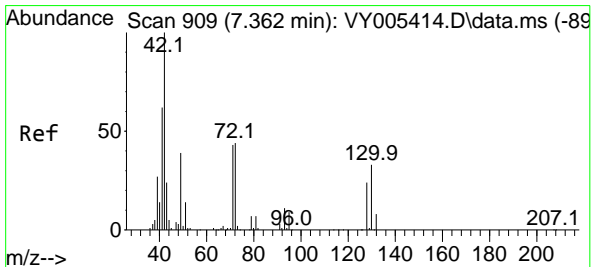
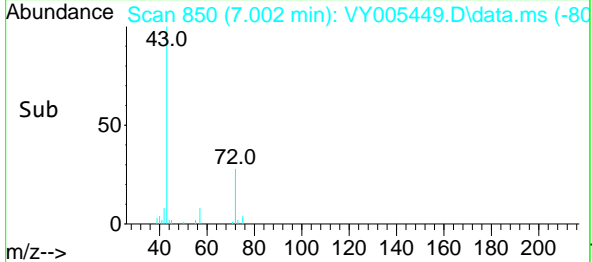
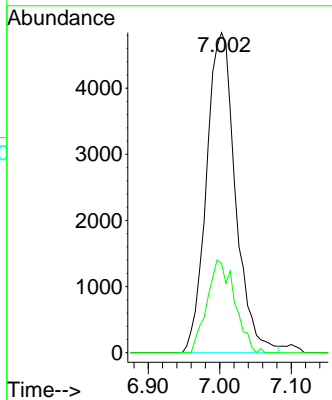
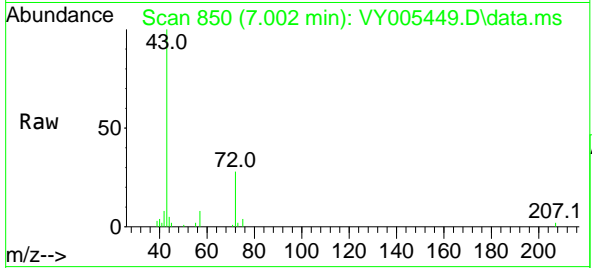




#25  
 2-Butanone  
 Concen: 18.484 ug/l  
 RT: 7.002 min Scan# 850  
 Delta R.T. -0.000 min  
 Lab File: VY005449.D  
 Acq: 26 Jul 2021 16:58

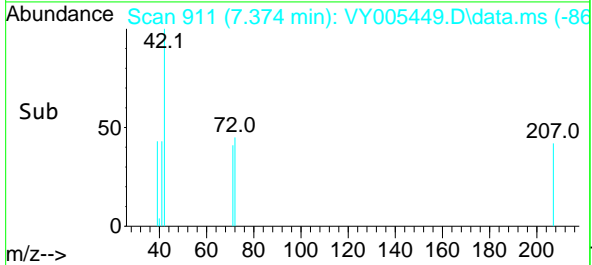
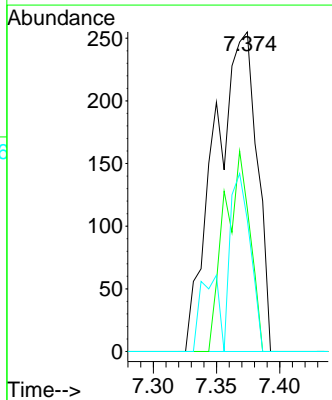
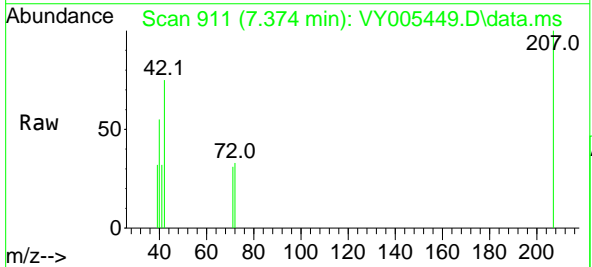
Instrument :  
 MSVOA\_Y  
 ClientSampled :

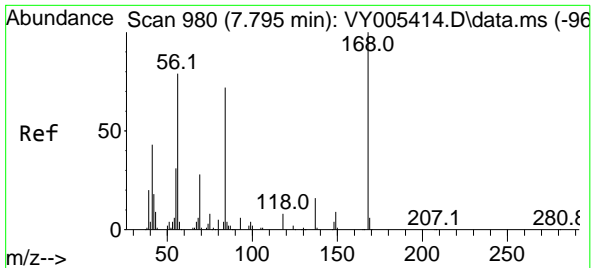
Tgt Ion: 43 Resp: 13612  
 Ion Ratio Lower Upper  
 43 100  
 72 27.9 21.9 32.9



#29  
 Tetrahydrofuran  
 Concen: 1.224 ug/l  
 RT: 7.374 min Scan# 911  
 Delta R.T. 0.012 min  
 Lab File: VY005449.D  
 Acq: 26 Jul 2021 16:58

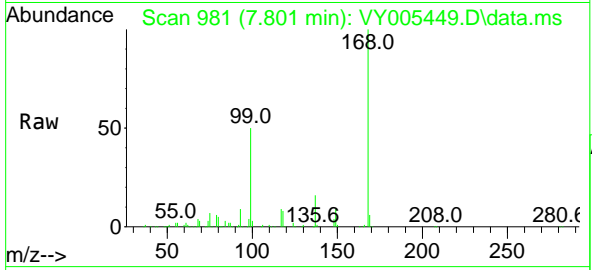
Tgt Ion: 42 Resp: 597  
 Ion Ratio Lower Upper  
 42 100  
 72 37.7 35.3 52.9  
 71 36.3 33.4 50.2



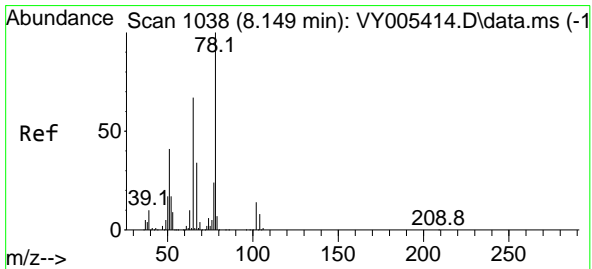
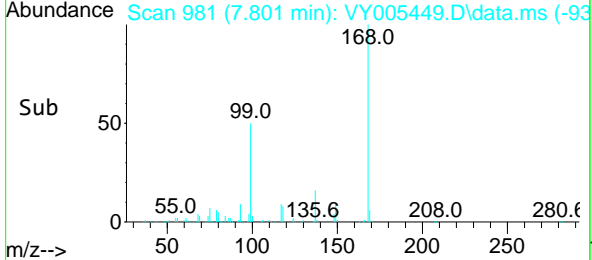
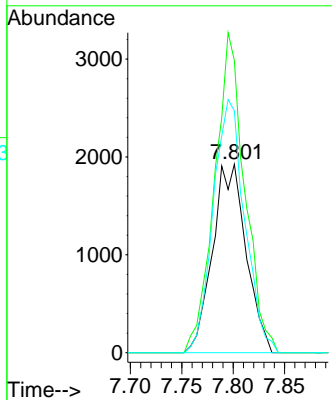


#31  
 Cyclohexane  
 Concen: 1.183 ug/l  
 RT: 7.801 min Scan# 981  
 Delta R.T. 0.006 min  
 Lab File: VY005449.D  
 Acq: 26 Jul 2021 16:58

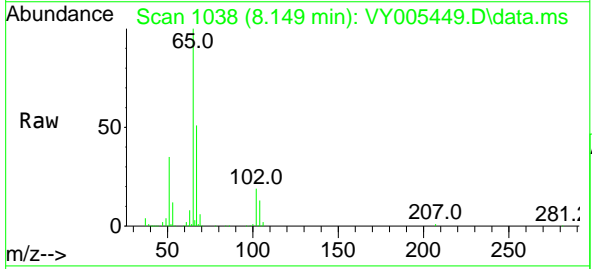
Instrument :  
 MSVOA\_Y  
 ClientSampled :



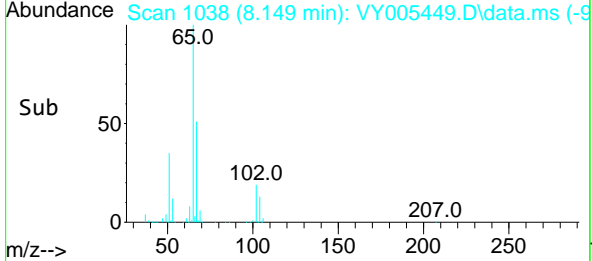
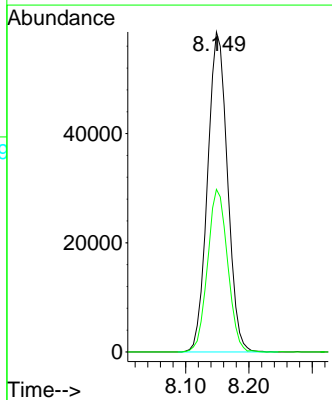
Tgt Ion: 56 Resp: 4351  
 Ion Ratio Lower Upper  
 56 100  
 69 155.0 28.7 43.1#  
 84 128.3 73.0 109.6#

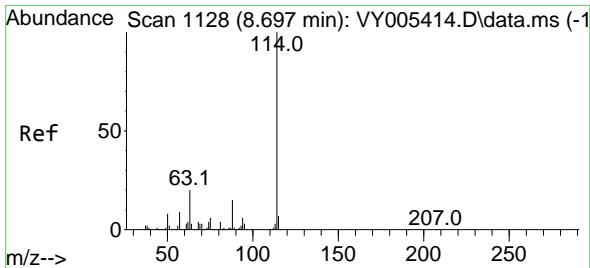


#33  
 1,2-Dichloroethane-d4  
 Concen: 59.371 ug/l  
 RT: 8.149 min Scan# 1038  
 Delta R.T. -0.000 min  
 Lab File: VY005449.D  
 Acq: 26 Jul 2021 16:58



Tgt Ion: 65 Resp: 127844  
 Ion Ratio Lower Upper  
 65 100  
 67 51.2 0.0 102.2

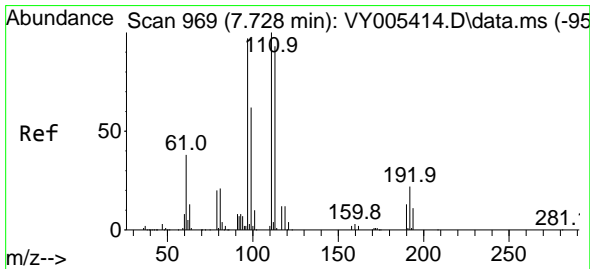
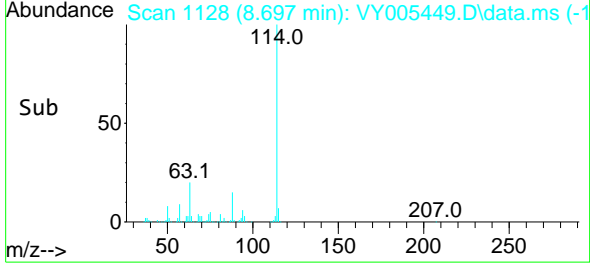
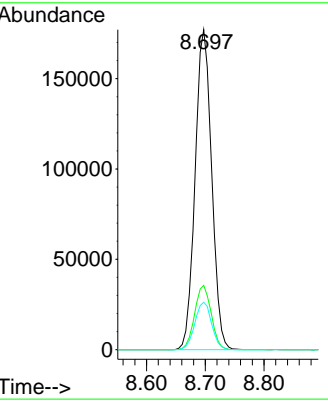
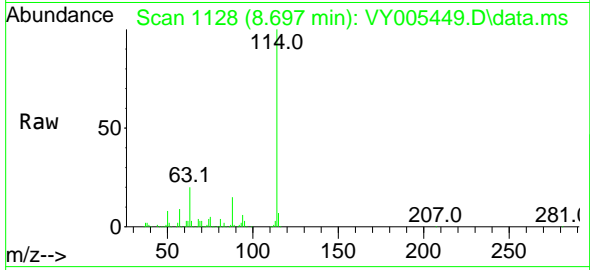




#34  
 1,4-Difluorobenzene  
 Concen: 50.000 ug/l  
 RT: 8.697 min Scan# 1128  
 Delta R.T. -0.000 min  
 Lab File: VY005449.D  
 Acq: 26 Jul 2021 16:58

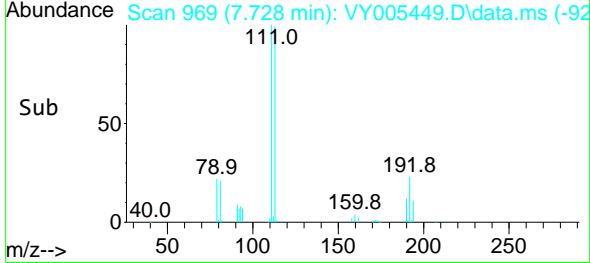
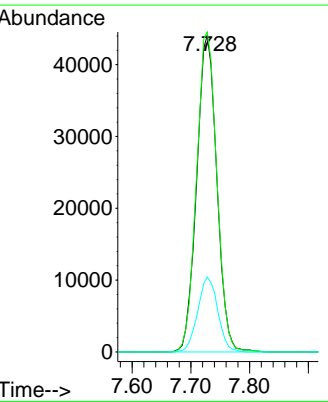
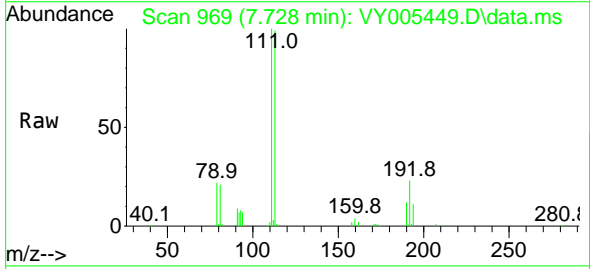
Instrument :  
 MSVOA\_Y  
 ClientSampled :

Tgt Ion	Resp	Lower	Upper
114	100		
63	20.1	0.0	39.0
88	14.8	0.0	30.8

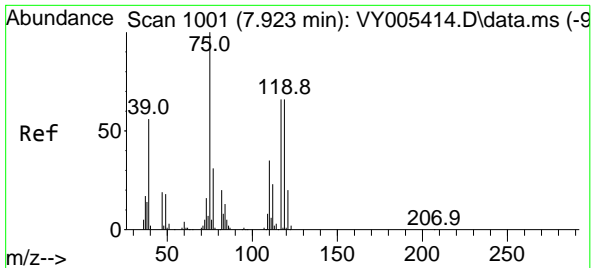


#35  
 Dibromofluoromethane  
 Concen: 52.529 ug/l  
 RT: 7.728 min Scan# 969  
 Delta R.T. -0.000 min  
 Lab File: VY005449.D  
 Acq: 26 Jul 2021 16:58

Tgt Ion	Resp	Lower	Upper
113	100		
111	101.7	82.6	124.0
192	23.5	18.9	28.3

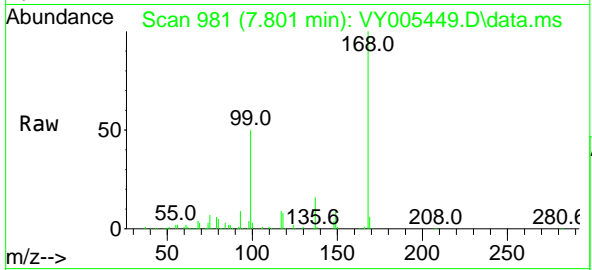




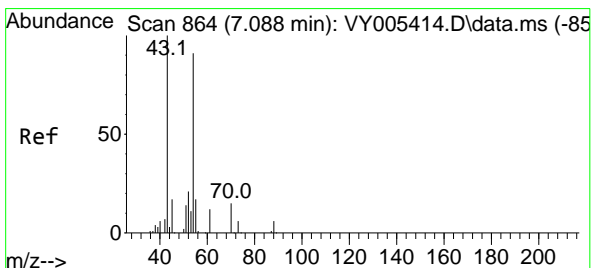
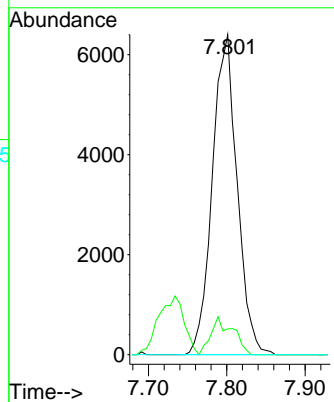
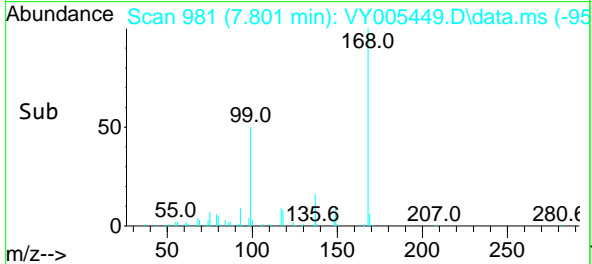


#36  
 1,1-Dichloropropene  
 Concen: 4.210 ug/l  
 RT: 7.801 min Scan# 981  
 Delta R.T. -0.122 min  
 Lab File: VY005449.D  
 Acq: 26 Jul 2021 16:58

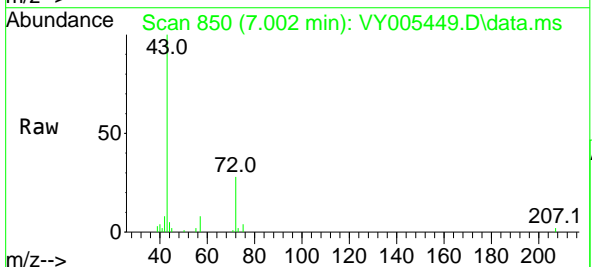
Instrument :  
 MSVOA\_Y  
 ClientSampled :



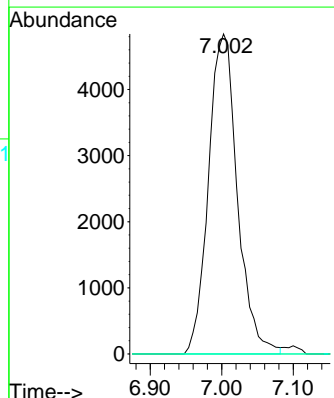
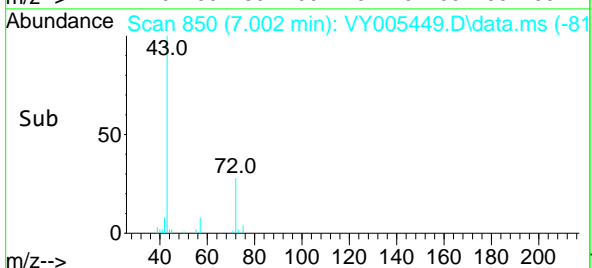
Tgt Ion	Resp	Lower	Upper
75	14084		
75	100		
110	10.5	17.6	52.9#
77	0.0	24.6	37.0#

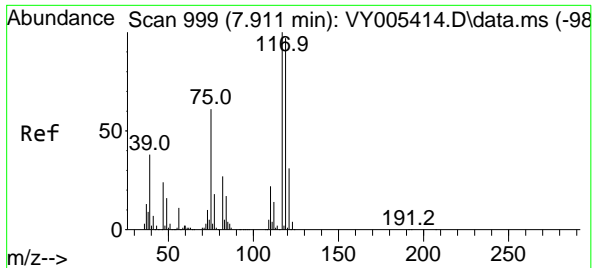


#37  
 Ethyl Acetate  
 Concen: 6.685 ug/l  
 RT: 7.002 min Scan# 850  
 Delta R.T. -0.085 min  
 Lab File: VY005449.D  
 Acq: 26 Jul 2021 16:58



Tgt Ion	Resp	Lower	Upper
43	13612		
43	100		
61	0.0	10.3	15.5#
70	0.0	7.9	11.9#

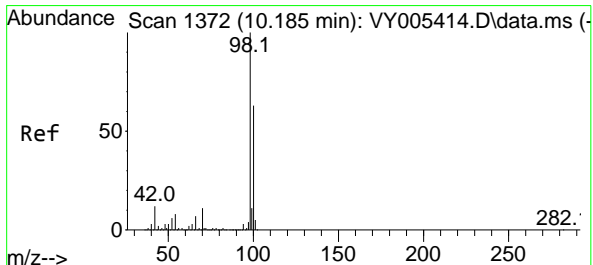
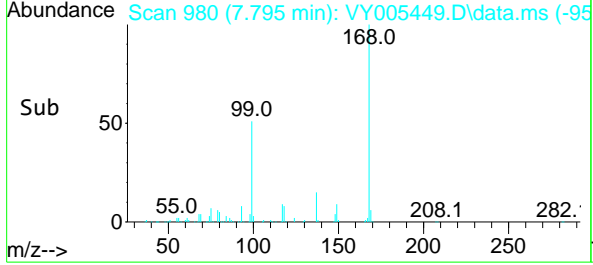
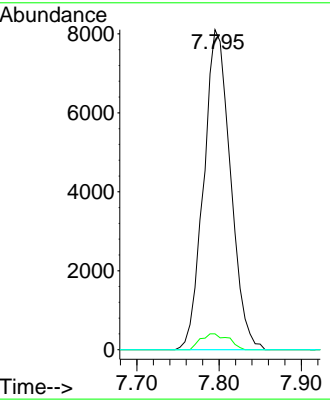
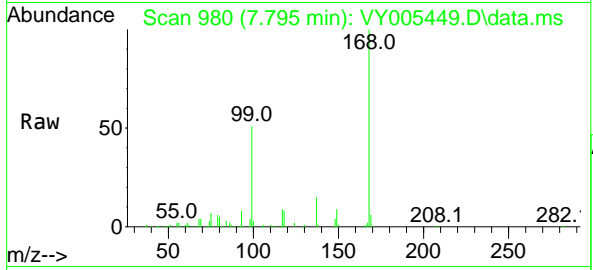




#38  
 Carbon Tetrachloride  
 Concen: 5.020 ug/l  
 RT: 7.795 min Scan# 980  
 Delta R.T. -0.116 min  
 Lab File: VY005449.D  
 Acq: 26 Jul 2021 16:58

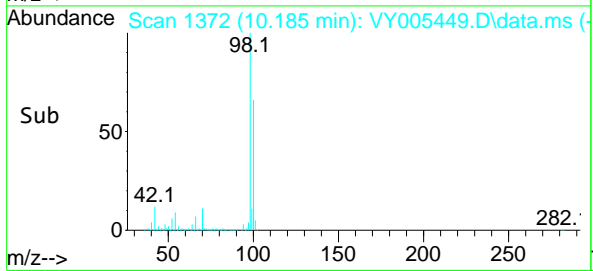
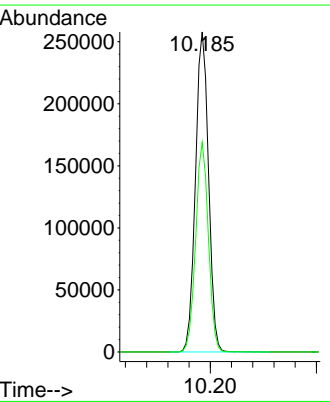
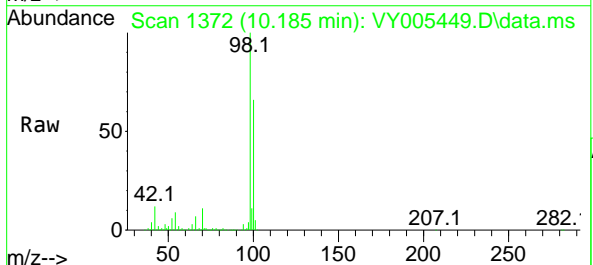
Instrument :  
 MSVOA\_Y  
 ClientSampled :

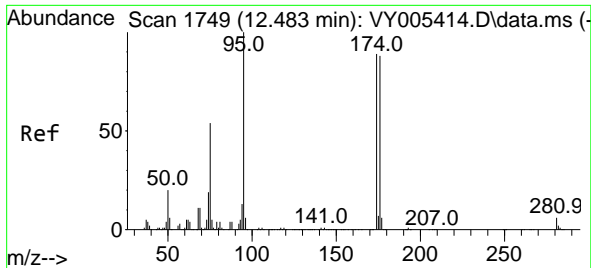
Tgt Ion	Resp	Lower	Upper
117	18350		
119	4.9	77.2	115.8#
121	0.0	25.1	37.7#



#50  
 Toluene-d8  
 Concen: 51.929 ug/l  
 RT: 10.185 min Scan# 1372  
 Delta R.T. -0.000 min  
 Lab File: VY005449.D  
 Acq: 26 Jul 2021 16:58

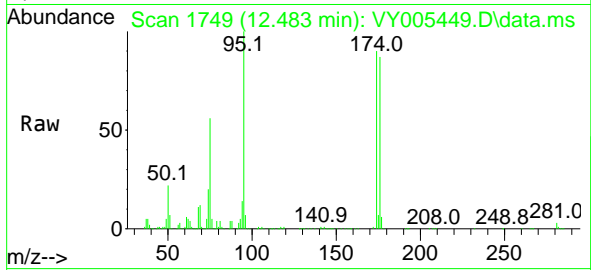
Tgt Ion	Resp	Lower	Upper
98	439665		
100	63.9	50.9	76.3





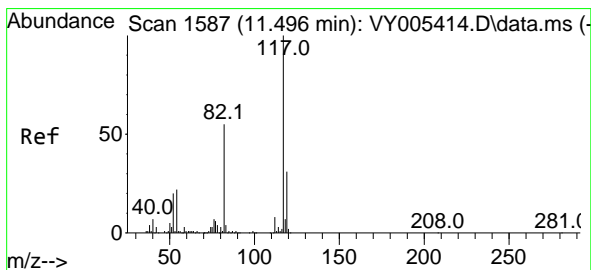
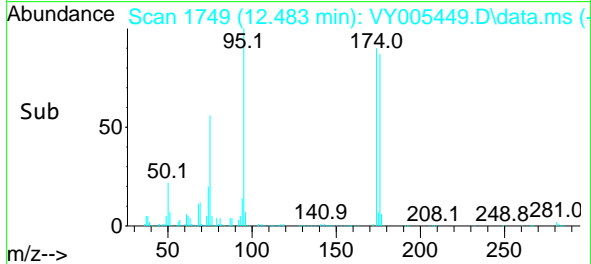
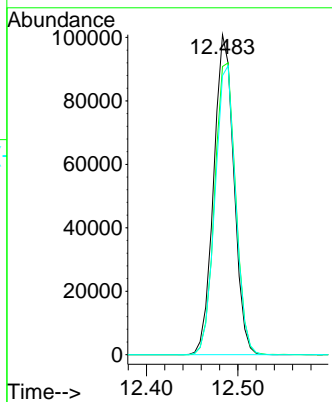
#62  
 4-Bromofluorobenzene  
 Concen: 55.465 ug/l  
 RT: 12.483 min Scan# 1749  
 Delta R.T. -0.000 min  
 Lab File: VY005449.D  
 Acq: 26 Jul 2021 16:58

Instrument :  
 MSVOA\_Y  
 ClientSampled :

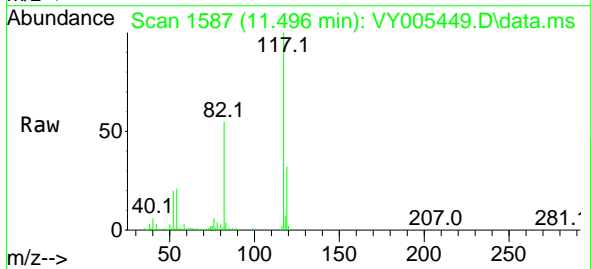


Tgt Ion: 95 Resp: 154990

Ion	Ratio	Lower	Upper
95	100		
174	94.4	0.0	186.6
176	91.6	0.0	182.4

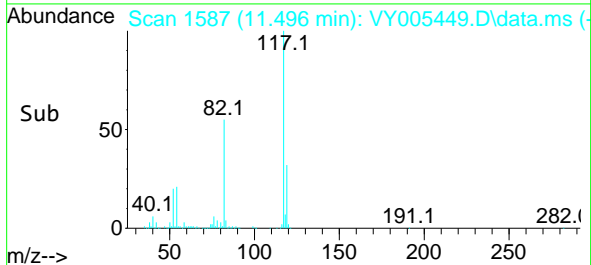
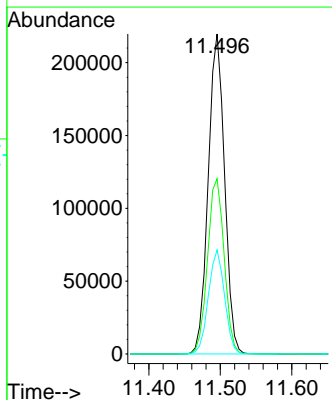


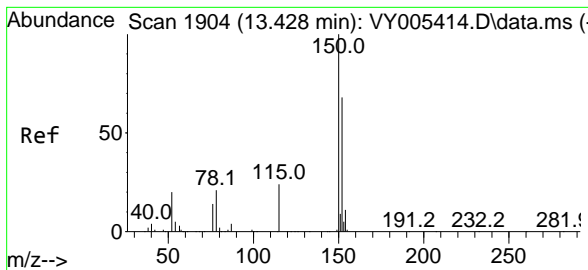
#63  
 Chlorobenzene-d5  
 Concen: 50.000 ug/l  
 RT: 11.496 min Scan# 1587  
 Delta R.T. -0.000 min  
 Lab File: VY005449.D  
 Acq: 26 Jul 2021 16:58



Tgt Ion: 117 Resp: 348323

Ion	Ratio	Lower	Upper
117	100		
82	54.8	43.8	65.6
119	32.5	24.8	37.2

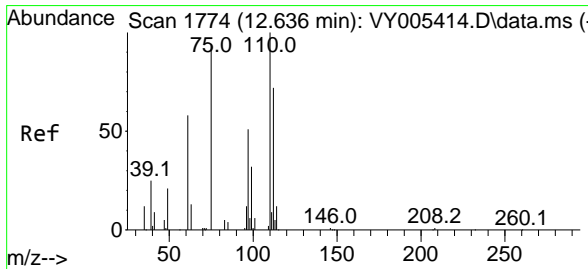
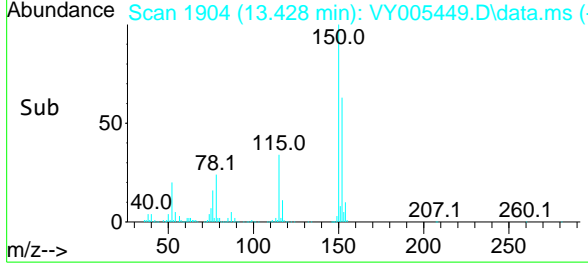
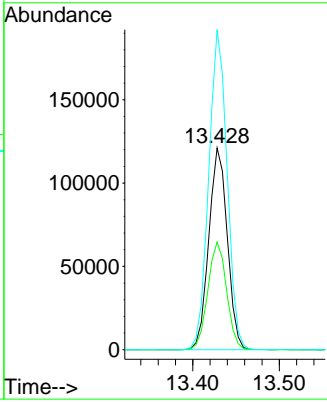
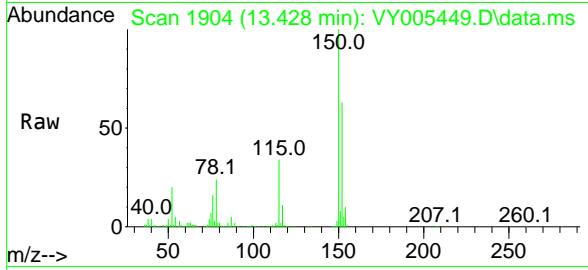




#72  
 1,4-Dichlorobenzene-d4  
 Concen: 50.000 ug/l  
 RT: 13.428 min Scan# 1904  
 Delta R.T. -0.000 min  
 Lab File: VY005449.D  
 Acq: 26 Jul 2021 16:58

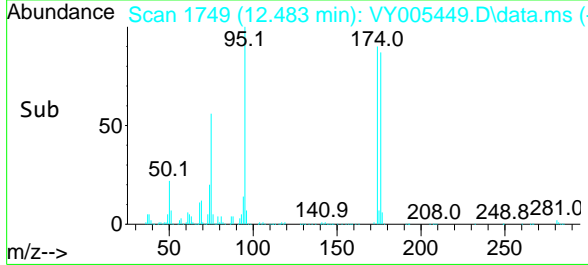
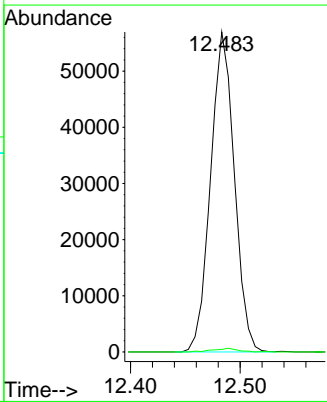
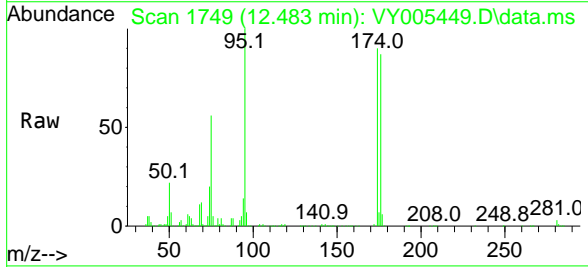
Instrument :  
 MSVOA\_Y  
 ClientSampled :

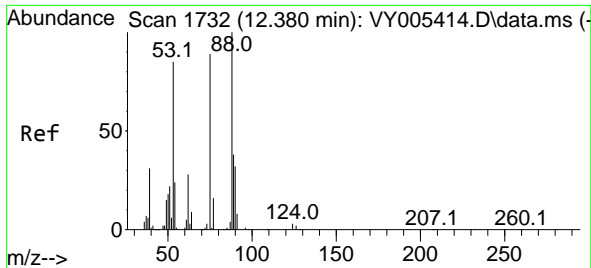
Tgt Ion	Resp	Lower	Upper
152	179603		
100			
115	54.0	27.7	83.1
150	157.3	0.0	349.6



#76  
 1,2,3-Trichloropropane  
 Concen: 48.629 ug/l  
 RT: 12.483 min Scan# 1749  
 Delta R.T. -0.152 min  
 Lab File: VY005449.D  
 Acq: 26 Jul 2021 16:58

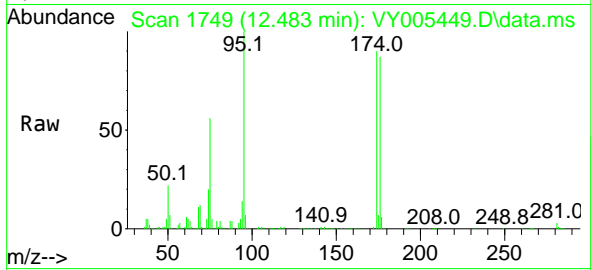
Tgt Ion	Resp	Lower	Upper
75	85939		
100			
77	1.2	0.0	0.0#





#81  
 trans-1,4-Dichloro-2-butene  
 Concen: 94.423 ug/l  
 RT: 12.483 min Scan# 1749  
 Delta R.T. 0.104 min  
 Lab File: VY005449.D  
 Acq: 26 Jul 2021 16:58

Instrument :  
 MSVOA\_Y  
 ClientSampled :



Tgt Ion: 75 Resp: 85939  
 Ion Ratio Lower Upper  
 75 100  
 53 0.1 76.1 114.1#  
 89 0.0 36.9 55.3#

