

Data Path : Z:\VOASRV\HPCHEM1\MSVOA Y\DATA\VY072720\
 Data File : VY003360.D
 Acq On : 27 Jul 2020 17:03
 Operator : SY/MD
 Sample : L3435-04
 Misc : 8.98G/5ML/MSVOA Y/SOIL
 ALS Vial : 10 Sample Multiplier: 1

Instrument :
 MSVOA_Y
 ClientSampleId :
 SP-2

Integration Parameters: RTEINT.P
 Integrator: RTE
 Smoothing : ON Filtering: 5
 Sampling : 1 Min Area: 3 % of largest Peak
 Start Thrs: 0.2 Max Peaks: 100
 Stop Thrs : 0 Peak Location: TOP

If leading or trailing edge < 100 prefer < Baseline drop else tangent >
 Peak separation: 5

Method : Z:\VOASRV\HPCHEM1\MSVOA_Y\METHODS\82Y071020S.M
 Title : SW846 8260

Signal : TIC

peak #	R.T. min	first scan	max scan	last scan	PK TY	peak height	corr. area	corr. % max.	% of total
1	4.724	478	490	504	rBV	35506	110804	5.07%	0.955%
2	7.724	968	982	988	rBV	305888	742709	33.98%	6.400%
3	7.797	988	994	1007	rVB	551205	1218354	55.74%	10.499%
4	8.145	1042	1051	1063	rBV	288681	635285	29.06%	5.475%
5	8.693	1131	1141	1155	rBV	811140	1567434	71.71%	13.507%
6	10.181	1377	1385	1402	rBV	1277837	2185934	100.00%	18.837%
7	11.485	1592	1599	1612	rBV	1141976	1871209	85.60%	16.125%
8	12.479	1755	1762	1772	rBV	932434	1433087	65.56%	12.350%
9	13.424	1910	1917	1925	rVB	1164159	1762586	80.63%	15.189%
10	13.961	2000	2005	2013	rVB2	16800	27864	1.27%	0.240%
11	15.095	2183	2191	2197	rBV2	29897	49072	2.24%	0.423%

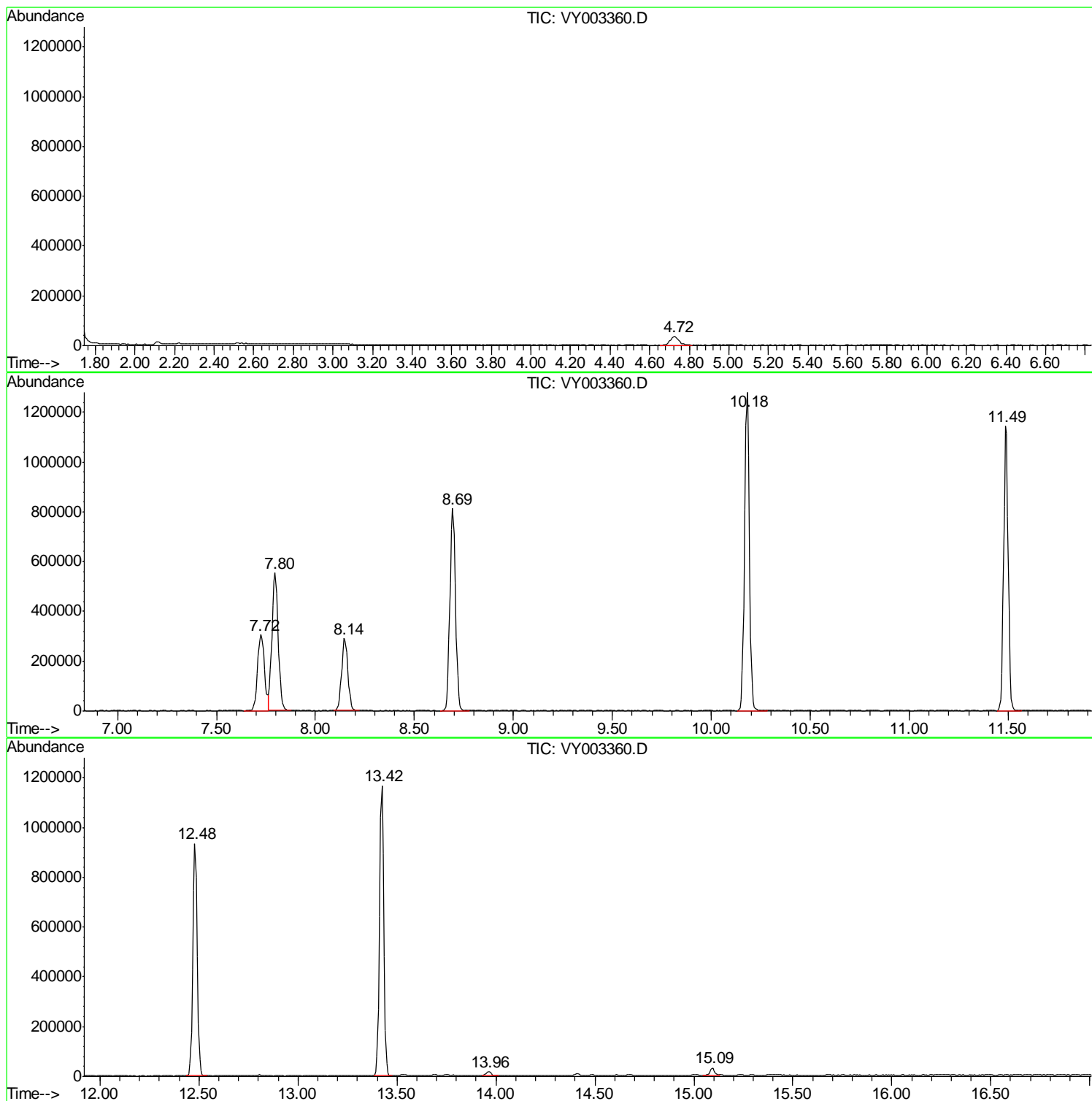
Sum of corrected areas: 11604338

Data Path : Z:\VOASRV\HPCHEM1\MSVOA Y\DATA\VY072720\
Data File : VY003360.D
Acq On : 27 Jul 2020 17:03
Operator : SY/MD
Sample : L3435-04
Misc : 8.98G/5ML/MSVOA Y/SOIL
ALS Vial : 10 Sample Multiplier: 1

Instrument :
MSVOA_Y
ClientSampleId :
SP-2

Quant Method : Z:\VOASRV\HPCHEM1\MSVOA_Y\METHODS\82Y071020S.M
Quant Title : SW846 8260

TIC Library : C:\DATABASE\NIST11.L
TIC Integration Parameters: LSCINT.P



Data Path : Z:\VOASRV\HPCHEM1\MSVOA_Y\DATA\VY072720\
Data File : VY003360.D
Acq On : 27 Jul 2020 17:03
Operator : SY/MD
Sample : L3435-04
Misc : 8.98G/5ML/MSVOA_Y/SOIL
ALS Vial : 10 Sample Multiplier: 1

Instrument :
MSVOA_Y
ClientSampleId :
SP-2

Quant Method : Z:\VOASRV\HPCHEM1\MSVOA_Y\METHODS\82Y071020S.M
Quant Title : SW846 8260

TIC Library : C:\DATABASE\NIST11.L
TIC Integration Parameters: LSCINT.P

No Library Search Compounds Detected

Data Path : Z:\VOASRV\HPCHEM1\MSVOA_Y\DATA\VY072720\
Data File : VY003360.D
Acq On : 27 Jul 2020 17:03
Operator : SY/MD
Sample : L3435-04
Misc : 8.98G/5ML/MSVOA_Y/SOIL
ALS Vial : 10 Sample Multiplier: 1

Instrument :
MSVOA_Y
ClientSampleId :
SP-2

Quant Method : Z:\VOASRV\HPCHEM1\MSVOA_Y\METHODS\82Y071020S.M
Quant Title : SW846 8260

TIC Library : C:\DATABASE\NIST11.L
TIC Integration Parameters: LSCINT.P

TIC Top Hit name	RT	EstConc	Units	Response	--Internal Standard--			
					#	RT	Resp	Conc
