

Data Path : Z:\VOASRV\HPCHEM1\MSVOA Y\DATA\VY072720\
 Data File : VY003366.D
 Acq On : 27 Jul 2020 19:27
 Operator : SY/MD
 Sample : L3449-04
 Misc : 7.03G/5ML/MSVOA Y/SOIL
 ALS Vial : 16 Sample Multiplier: 1

Instrument :
 MSVOA_Y
 ClientSampleId :
 FK-GF-02-059-B

Integration Parameters: RTEINT.P

Integrator: RTE
 Smoothing : ON Filtering: 5
 Sampling : 1 Min Area: 3 % of largest Peak
 Start Thrs: 0.2 Max Peaks: 100
 Stop Thrs : 0 Peak Location: TOP

If leading or trailing edge < 100 prefer < Baseline drop else tangent >
 Peak separation: 5

Method : Z:\VOASRV\HPCHEM1\MSVOA_Y\METHODS\82Y071020S.M
 Title : SW846 8260

Signal : TIC

peak #	R.T. min	first scan	max scan	last scan	PK TY	peak height	corr. area	corr. % max.	% of total
1	1.865	16	21	32	rVB2	22941	36198	1.70%	0.316%
2	4.200	396	404	412	rBV	10463	26567	1.25%	0.232%
3	4.724	481	490	499	rBV2	22912	73223	3.44%	0.638%
4	7.724	972	982	988	rBV	302910	717459	33.68%	6.254%
5	7.797	988	994	1004	rVB	537486	1182246	55.49%	10.306%
6	8.145	1042	1051	1063	rBV	279844	631933	29.66%	5.509%
7	8.693	1129	1141	1155	rBV	802500	1539347	72.25%	13.419%
8	10.181	1377	1385	1392	rBV	1240393	2130495	100.00%	18.573%
9	11.485	1592	1599	1612	rBV	1085557	1804736	84.71%	15.733%
10	12.479	1755	1762	1769	rBV	890771	1354938	63.60%	11.812%
11	12.808	1811	1816	1821	rVB7	13886	24348	1.14%	0.212%
12	13.424	1910	1917	1926	rVB	1053674	1598950	75.05%	13.939%
13	13.662	1952	1956	1964	rVV4	15564	30020	1.41%	0.262%
14	13.747	1964	1970	1975	rVB7	15761	27958	1.31%	0.244%
15	13.967	2001	2006	2011	rVB2	32725	57065	2.68%	0.497%
16	14.076	2019	2024	2029	rVB5	18463	31277	1.47%	0.273%
17	14.680	2116	2123	2128	rBV6	33939	78490	3.68%	0.684%
18	15.052	2179	2184	2190	rVB3	19435	37730	1.77%	0.329%
19	15.521	2255	2261	2267	rBV8	10950	23702	1.11%	0.207%
20	15.729	2292	2295	2303	rVB6	14783	23743	1.11%	0.207%
21	16.033	2338	2345	2352	rBV9	16719	40684	1.91%	0.355%

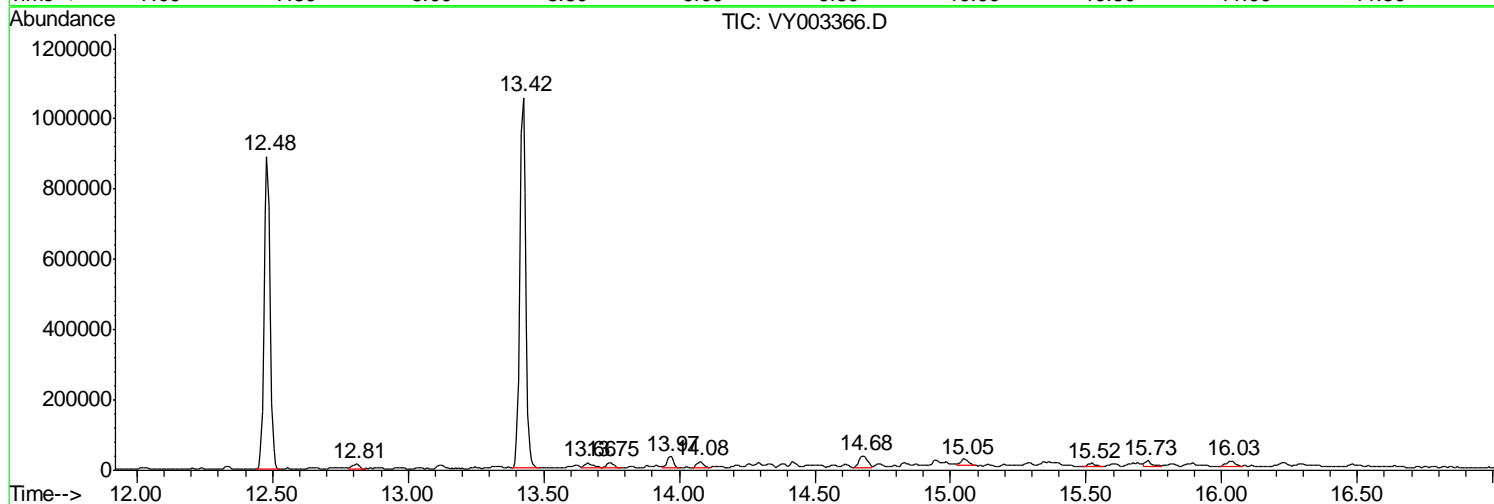
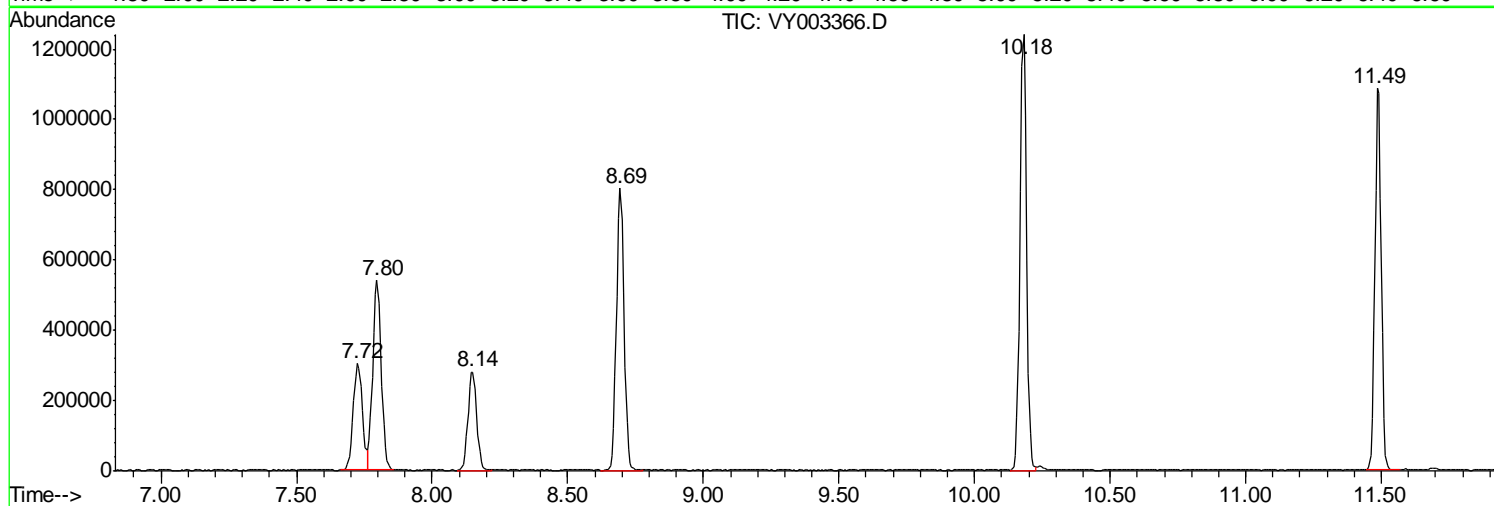
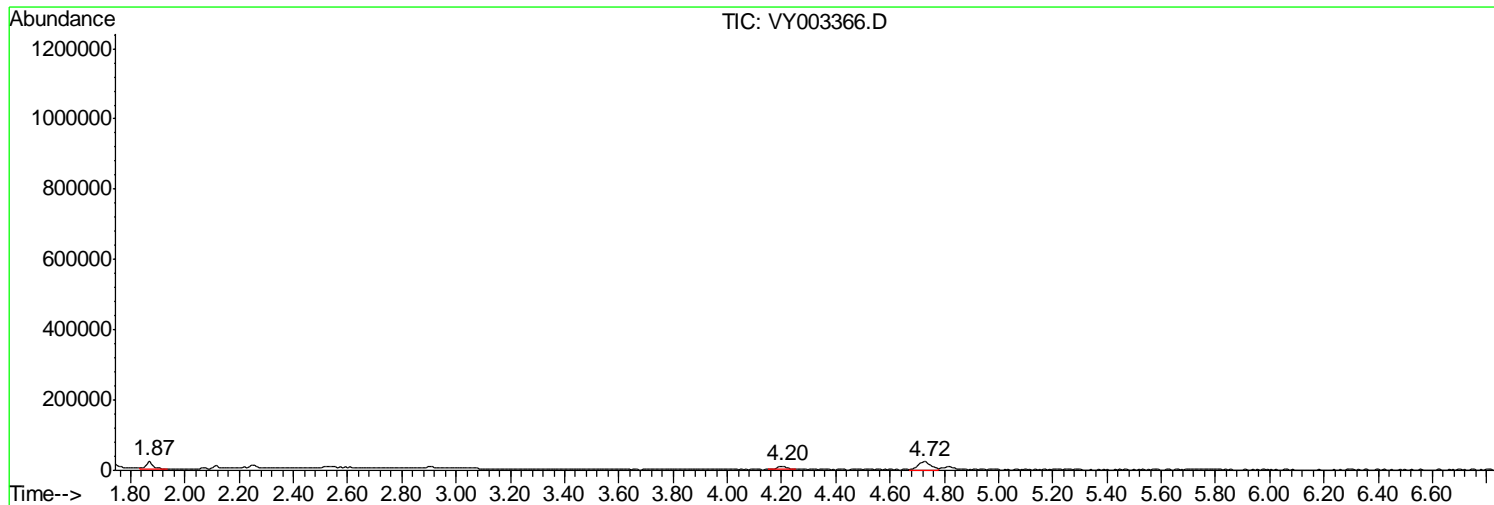
Sum of corrected areas: 11471109

Data Path : Z:\VOASRV\HPCHEM1\MSVOA Y\DATA\VY072720\
 Data File : VY003366.D
 Acq On : 27 Jul 2020 19:27
 Operator : SY/MD
 Sample : L3449-04
 Misc : 7.03G/5ML/MSVOA Y/SOIL
 ALS Vial : 16 Sample Multiplier: 1

Instrument :
 MSVOA_Y
 ClientSampleId :
 FK-GF-02-059-B

Quant Method : Z:\VOASRV\HPCHEM1\MSVOA_Y\METHODS\82Y071020S.M
 Quant Title : SW846 8260

TIC Library : C:\DATABASE\NIST11.L
 TIC Integration Parameters: LSCINT.P



Data Path : Z:\VOASRV\HPCHEM1\MSVOA_Y\DATA\VY072720\
Data File : VY003366.D
Acq On : 27 Jul 2020 19:27
Operator : SY/MD
Sample : L3449-04
Misc : 7.03G/5ML/MSVOA_Y/SOIL
ALS Vial : 16 Sample Multiplier: 1

Instrument :
MSVOA_Y
ClientSampleId :
FK-GF-02-059-B

Quant Method : Z:\VOASRV\HPCHEM1\MSVOA_Y\METHODS\82Y071020S.M
Quant Title : SW846 8260

TIC Library : C:\DATABASE\NIST11.L
TIC Integration Parameters: LSCINT.P

No Library Search Compounds Detected

Data Path : Z:\VOASRV\HPCHEM1\MSVOA_Y\DATA\VY072720\
Data File : VY003366.D
Acq On : 27 Jul 2020 19:27
Operator : SY/MD
Sample : L3449-04
Misc : 7.03G/5ML/MSVOA_Y/SOIL
ALS Vial : 16 Sample Multiplier: 1

Instrument :
MSVOA_Y
ClientSampleId :
FK-GF-02-059-B

Quant Method : Z:\VOASRV\HPCHEM1\MSVOA_Y\METHODS\82Y071020S.M
Quant Title : SW846 8260

TIC Library : C:\DATABASE\NIST11.L
TIC Integration Parameters: LSCINT.P

TIC Top Hit name	RT	EstConc	Units	Response	--Internal Standard--			
					#	RT	Resp	Conc
