

Data Path : Z:\voasrv\HPCHEM1\MSVOA_Y\Data\VY072822\
 Data File : VY009745.D
 Acq On : 28 Jul 2022 12:53
 Operator : KP/MD
 Sample : N3894-05
 Misc : 5.05g/5.0mL/MSVOA_Y/SOIL
 ALS Vial : 10 Sample Multiplier: 1

Instrument :
 MSVOA_Y
 ClientSampleId :
 RVE-24

Integration Parameters: RTEINT.P

Integrator: RTE
 Smoothing : ON Filtering: 5
 Sampling : 1 Min Area: 3 % of largest Peak
 Start Thrs: 0.2 Max Peaks: 100
 Stop Thrs : 0 Peak Location: TOP

If leading or trailing edge < 100 prefer < Baseline drop else tangent >
 Peak separation: 5

Method : Z:\voasrv\HPCHEM1\MSVOA_Y\methods\82Y072622S.M
 Title : SW846 8260

Signal : TIC: VY009745.D\data.ms

peak #	R.T. min	first scan	max scan	last scan	PK TY	peak height	corr. area	corr. % max.	% of total
1	4.704	461	473	492	rVB	39304	116799	15.13%	2.726%
2	5.734	631	642	652	rBV3	8801	26543	3.44%	0.619%
3	6.978	834	846	865	rBV2	23986	91117	11.80%	2.127%
4	7.710	957	966	972	rBV	97495	230444	29.85%	5.378%
5	7.783	972	978	989	rVB	186513	414707	53.72%	9.679%
6	8.130	1023	1035	1050	rVB2	98182	234489	30.38%	5.473%
7	8.685	1117	1126	1136	rBV	314955	613915	79.53%	14.328%
8	10.173	1363	1370	1379	rBV	366455	635543	82.33%	14.833%
9	10.947	1491	1497	1503	rBV2	5984	10879	1.41%	0.254%
10	11.489	1577	1586	1600	rBV	475445	771973	100.00%	18.017%
11	12.483	1741	1749	1758	rBV	258915	420260	54.44%	9.808%
12	13.422	1895	1903	1912	rBV	471106	718060	93.02%	16.759%

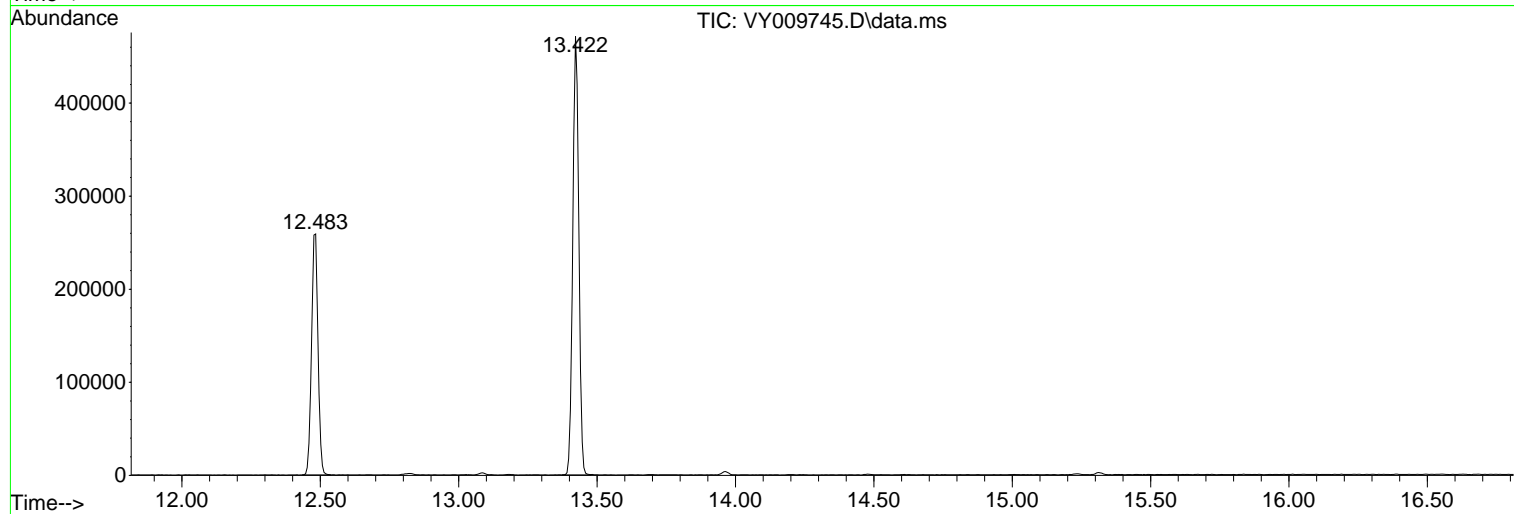
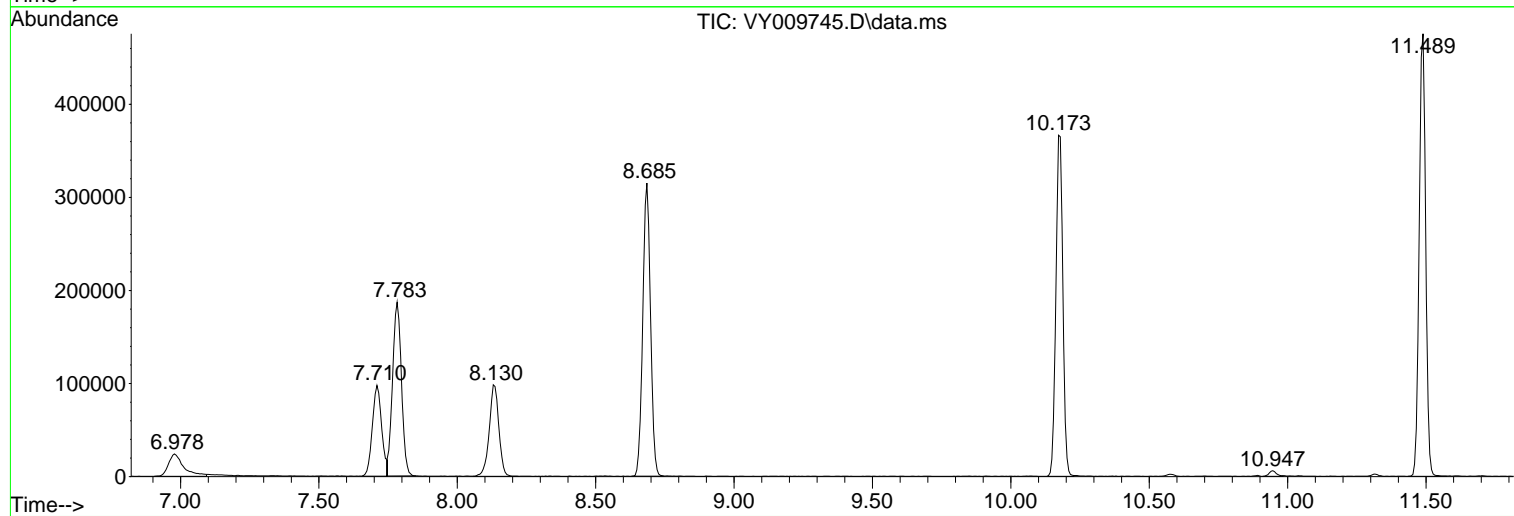
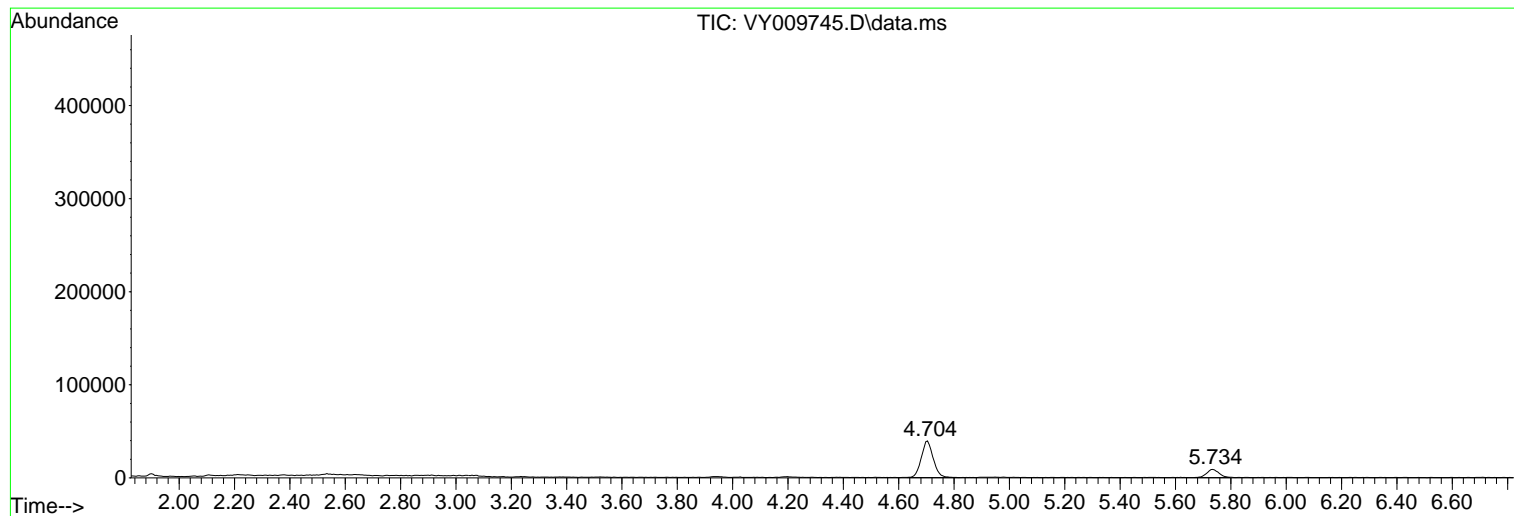
Sum of corrected areas: 4284729

Data Path : Z:\voasrv\HPCHEM1\MSVOA_Y\Data\VY072822\
Data File : VY009745.D
Acq On : 28 Jul 2022 12:53
Operator : KP/MD
Sample : N3894-05
Misc : 5.05g/5.0mL/MSVOA_Y/SOIL
ALS Vial : 10 Sample Multiplier: 1

Instrument :
MSVOA_Y
ClientSampleId :
RVE-24

Quant Method : Z:\voasrv\HPCHEM1\MSVOA_Y\methods\82Y072622S.M
Quant Title : SW846 8260

TIC Library : C:\Database\NIST0.L
TIC Integration Parameters: LSCINT.P



Library Search Compound Report

Data Path : Z:\voasrv\HPCHEM1\MSVOA_Y\Data\VY072822\
Data File : VY009745.D
Acq On : 28 Jul 2022 12:53
Operator : KP/MD
Sample : N3894-05
Misc : 5.05g/5.0mL/MSVOA_Y/SOIL
ALS Vial : 10 Sample Multiplier: 1

Instrument :
MSVOA_Y
ClientSampleId :
RVE-24

Quant Method : Z:\voasrv\HPCHEM1\MSVOA_Y\methods\82Y072622S.M
Quant Title : SW846 8260

TIC Library : C:\Database\NIST20.L
TIC Integration Parameters: LSCINT.P

No Library Search Compounds Detected

Data Path : Z:\voasrv\HPCHEM1\MSVOA_Y\Data\VY072822\
Data File : VY009745.D
Acq On : 28 Jul 2022 12:53
Operator : KP/MD
Sample : N3894-05
Misc : 5.05g/5.0mL/MSVOA_Y/SOIL
ALS Vial : 10 Sample Multiplier: 1

Instrument :
MSVOA_Y
ClientSampleId :
RVE-24

Quant Method : Z:\voasrv\HPCHEM1\MSVOA_Y\methods\82Y072622S.M
Quant Title : SW846 8260

TIC Library : C:\Database\NIST20.L
TIC Integration Parameters: LSCINT.P

TIC Top Hit name	RT	EstConc	Units	Response	--Internal Standard--			
					#	RT	Resp	Conc
