

Data Path : Z:\voasrv\HPCHEM1\MSVOA_Y\Data\VY072922\
 Data File : VY009779.D
 Acq On : 29 Jul 2022 17:49
 Operator : KP/MD
 Sample : N3927-07
 Misc : 4.14g/5.0mL/MSVOA_Y/SOIL
 ALS Vial : 16 Sample Multiplier: 1

Instrument :
 MSVOA_Y
 ClientSampleId :
 RVE-80

Quant Time: Aug 01 01:15:25 2022
 Quant Method : Z:\voasrv\HPCHEM1\MSVOA_Y\methods\82Y072622S.M
 Quant Title : SW846 8260
 QLast Update : Wed Jul 27 04:24:58 2022
 Response via : Initial Calibration

Compound	R.T.	QIon	Response	Conc	Units	Dev(Min)

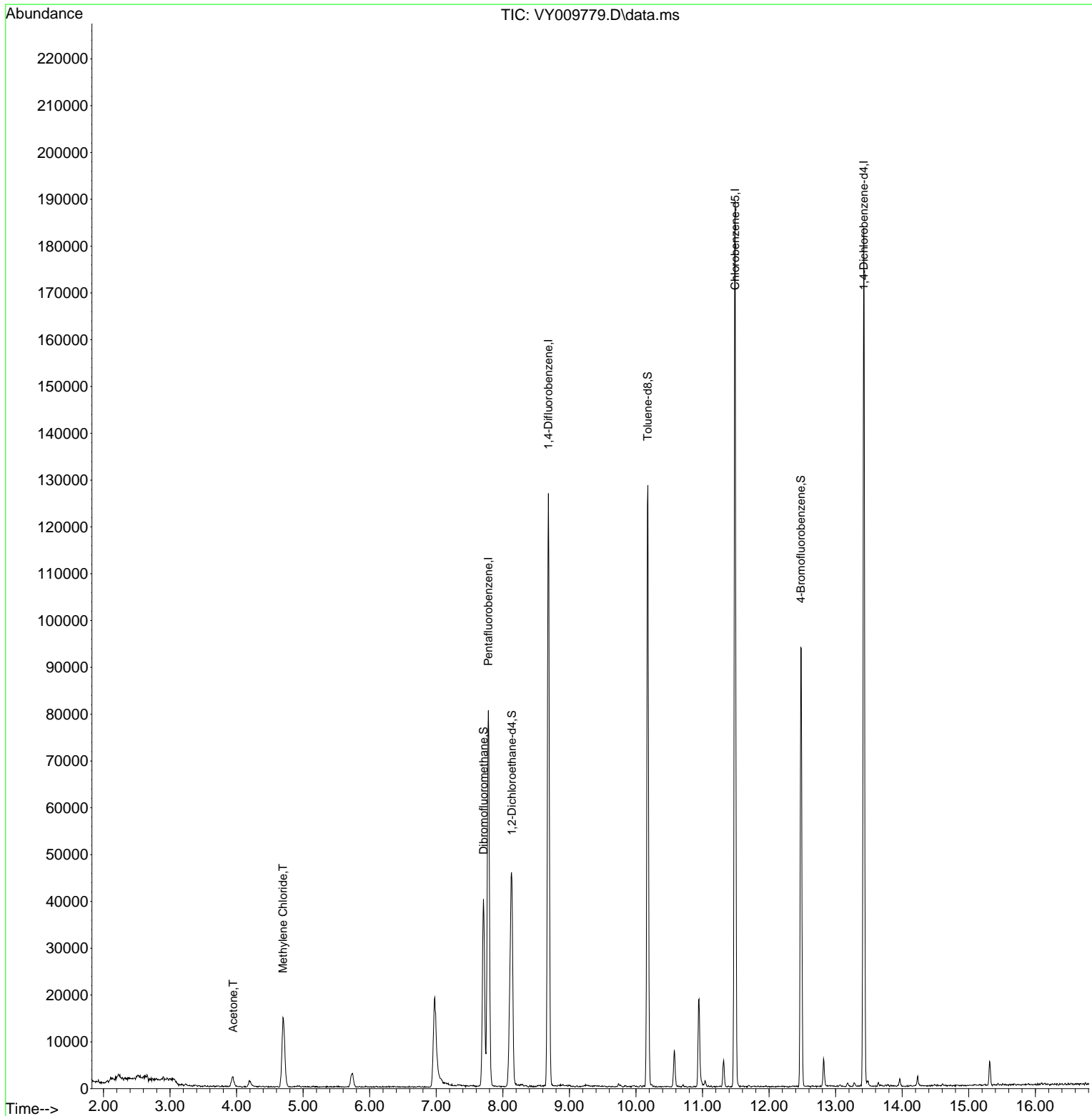
Internal Standards						
1) Pentafluorobenzene	7.782	168	66738	50.000	ug/l	# 0.00
34) 1,4-Difluorobenzene	8.685	114	112583	50.000	ug/l	0.00
63) Chlorobenzene-d5	11.489	117	108839	50.000	ug/l	0.00
72) 1,4-Dichlorobenzene-d4	13.422	152	50493	50.000	ug/l	0.00
System Monitoring Compounds						
33) 1,2-Dichloroethane-d4	8.136	65	29742	68.907	ug/l	0.00
Spiked Amount	50.000	Range	50 - 163	Recovery	=	137.820%
35) Dibromofluoromethane	7.709	113	27724	45.278	ug/l	0.00
Spiked Amount	50.000	Range	54 - 147	Recovery	=	90.560%
50) Toluene-d8	10.178	98	85457	47.729	ug/l	0.00
Spiked Amount	50.000	Range	78 - 125	Recovery	=	95.460%
62) 4-Bromofluorobenzene	12.477	95	25678	31.627	ug/l	0.00
Spiked Amount	50.000	Range	50 - 146	Recovery	=	63.260%
Target Compounds						
						Qvalue
16) Acetone	3.948	43	4045	25.350	ug/l	91
20) Methylene Chloride	4.698	84	11363	6.388	ug/l #	81

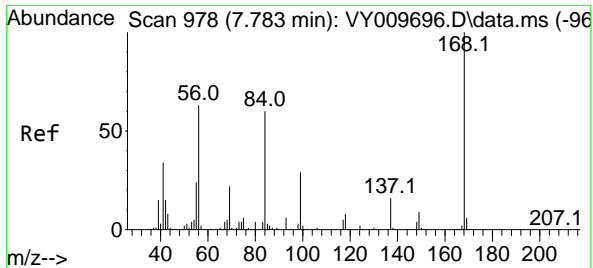
(#) = qualifier out of range (m) = manual integration (+) = signals summed

Data Path : Z:\voasrv\HPCHEM1\MSVOA_Y\Data\VY072922\
 Data File : VY009779.D
 Acq On : 29 Jul 2022 17:49
 Operator : KP/MD
 Sample : N3927-07
 Misc : 4.14g/5.0mL/MSVOA_Y/SOIL
 ALS Vial : 16 Sample Multiplier: 1

Instrument :
 MSVOA_Y
 ClientSampleId :
 RVE-80

Quant Time: Aug 01 01:15:25 2022
 Quant Method : Z:\voasrv\HPCHEM1\MSVOA_Y\methods\82Y072622S.M
 Quant Title : SW846 8260
 QLast Update : Wed Jul 27 04:24:58 2022
 Response via : Initial Calibration

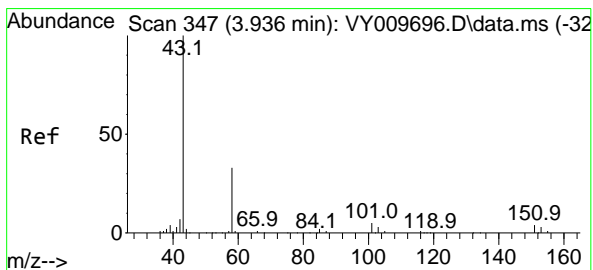
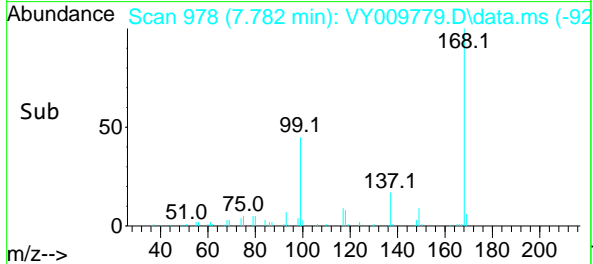
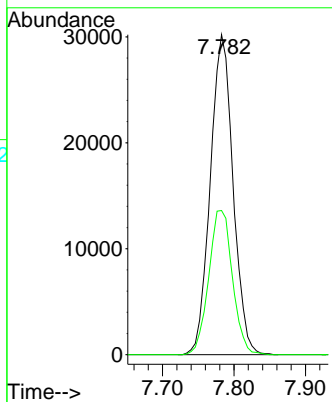
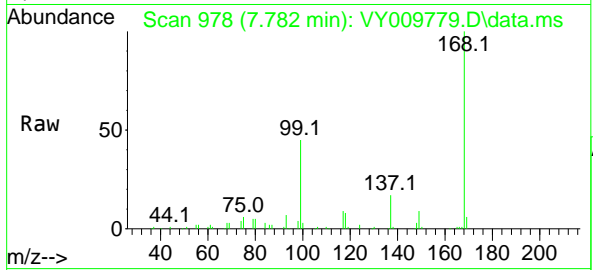




#1
 Pentafluorobenzene
 Concen: 50.000 ug/l
 RT: 7.782 min Scan# 91
 Delta R.T. -0.001 min
 Lab File: VY009779.D
 Acq: 29 Jul 2022 17:49

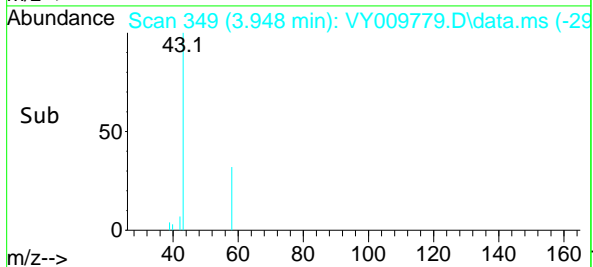
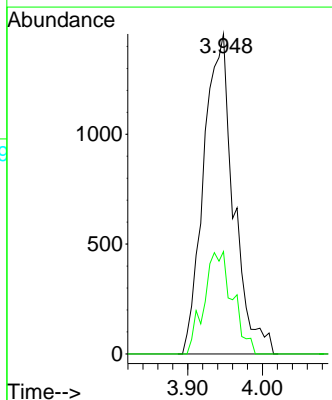
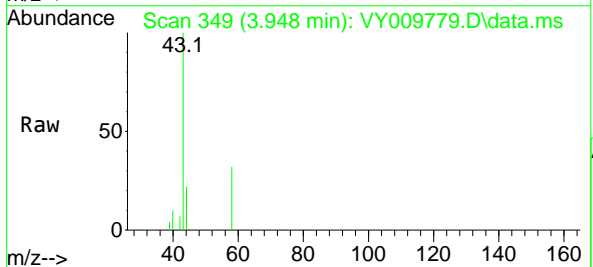
Instrument :
 MSVOA_Y
 ClientSampleId :
 RVE-80

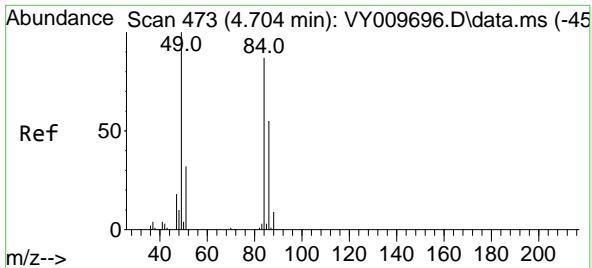
Tgt Ion:168 Resp: 66738
 Ion Ratio Lower Upper
 168 100
 99 45.1 46.9 70.3#



#16
 Acetone
 Concen: 25.350 ug/l
 RT: 3.948 min Scan# 349
 Delta R.T. 0.012 min
 Lab File: VY009779.D
 Acq: 29 Jul 2022 17:49

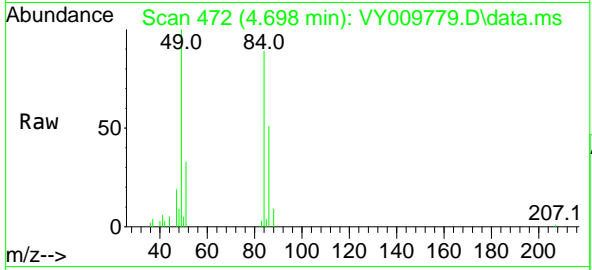
Tgt Ion: 43 Resp: 4045
 Ion Ratio Lower Upper
 43 100
 58 32.0 22.0 33.0



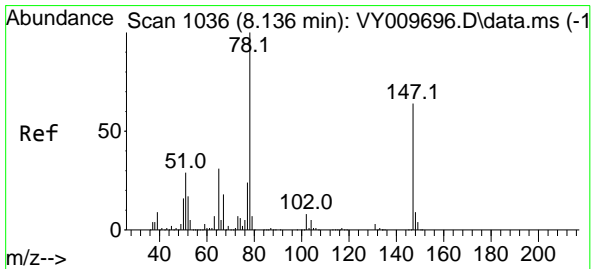
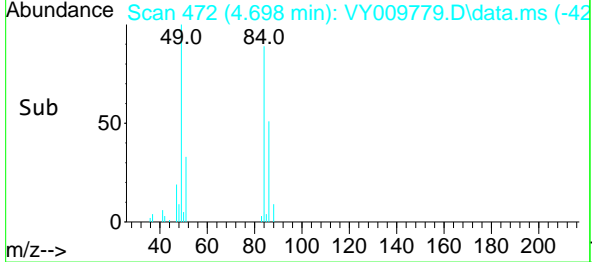
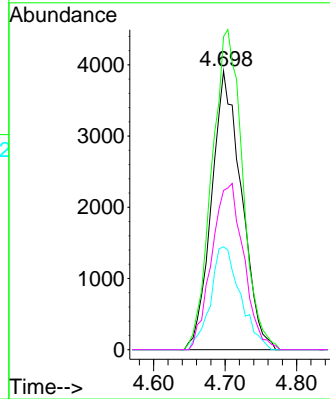


#20
 Methylene Chloride
 Concen: 6.388 ug/l
 RT: 4.698 min Scan# 41
 Delta R.T. -0.006 min
 Lab File: VY009779.D
 Acq: 29 Jul 2022 17:49

Instrument :
 MSVOA_Y
 ClientSampleId :
 RVE-80

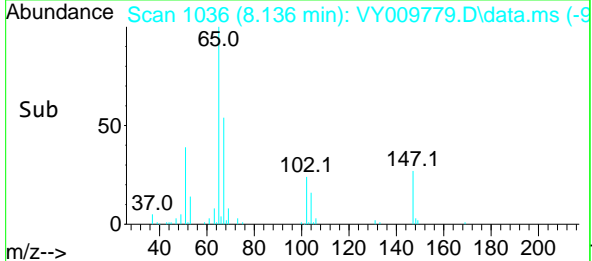
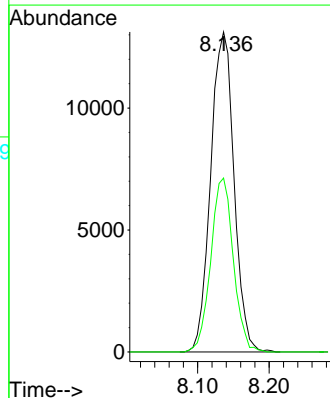
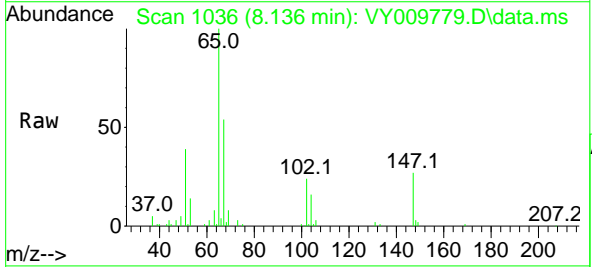


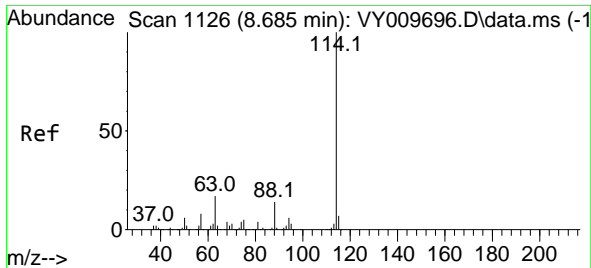
Tgt Ion: 84 Resp: 11363
 Ion Ratio Lower Upper
 84 100
 49 112.4 114.4 171.6#
 51 37.0 35.3 52.9
 86 57.1 53.7 80.5



#33
 1,2-Dichloroethane-d4
 Concen: 68.907 ug/l
 RT: 8.136 min Scan# 1036
 Delta R.T. 0.000 min
 Lab File: VY009779.D
 Acq: 29 Jul 2022 17:49

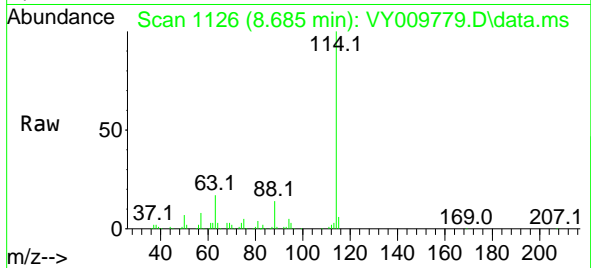
Tgt Ion: 65 Resp: 29742
 Ion Ratio Lower Upper
 65 100
 67 52.5 0.0 99.4



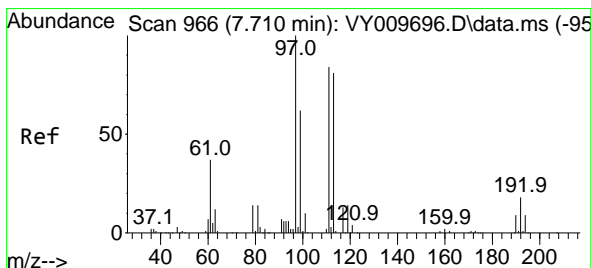
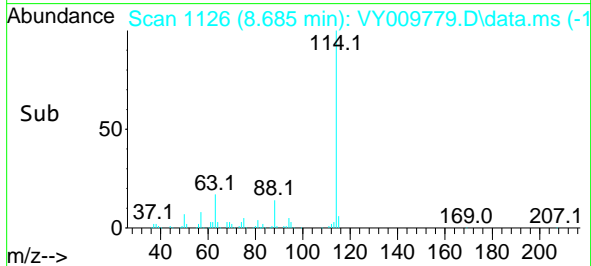
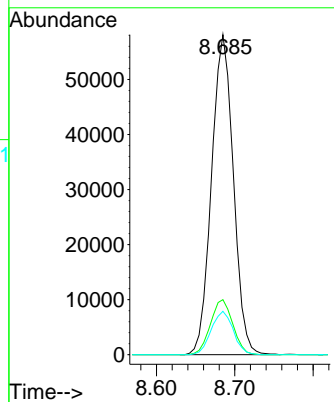


#34
 1,4-Difluorobenzene
 Concen: 50.000 ug/l
 RT: 8.685 min Scan# 1126
 Delta R.T. -0.000 min
 Lab File: VY009779.D
 Acq: 29 Jul 2022 17:49

Instrument : MSVOA_Y
 ClientSampleId : RVE-80

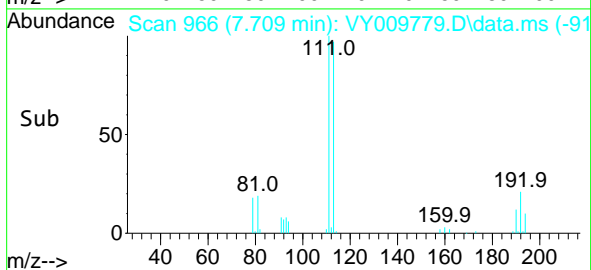
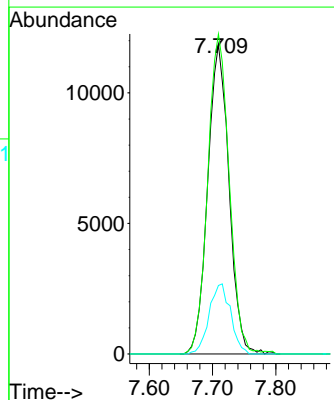
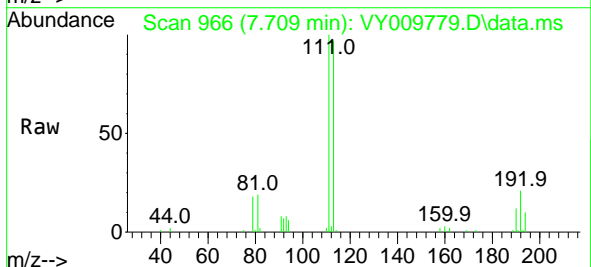


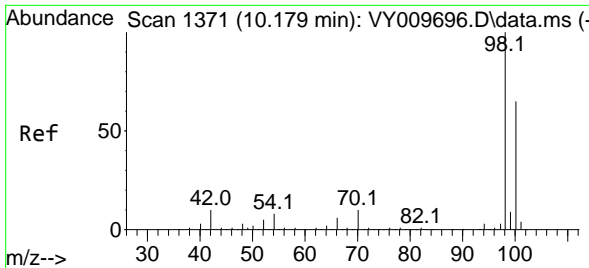
Tgt Ion:114 Resp: 112583
 Ion Ratio Lower Upper
 114 100
 63 17.2 0.0 43.2
 88 13.5 0.0 31.8



#35
 Dibromofluoromethane
 Concen: 45.278 ug/l
 RT: 7.709 min Scan# 966
 Delta R.T. -0.001 min
 Lab File: VY009779.D
 Acq: 29 Jul 2022 17:49

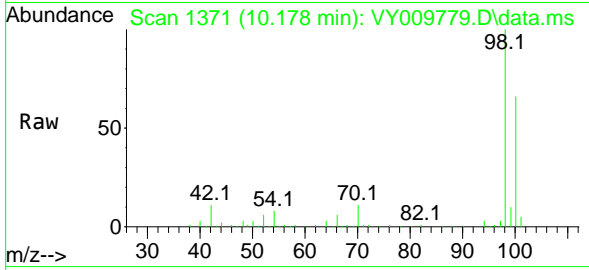
Tgt Ion:113 Resp: 27724
 Ion Ratio Lower Upper
 113 100
 111 104.4 82.6 124.0
 192 22.8 17.6 26.4



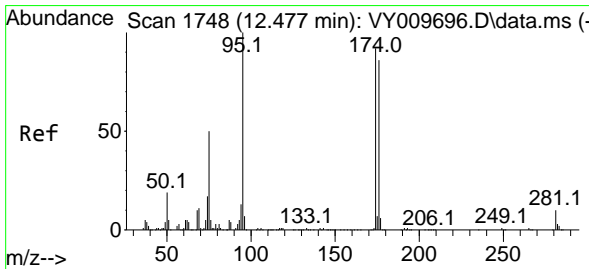
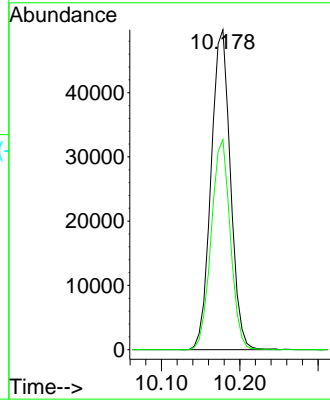
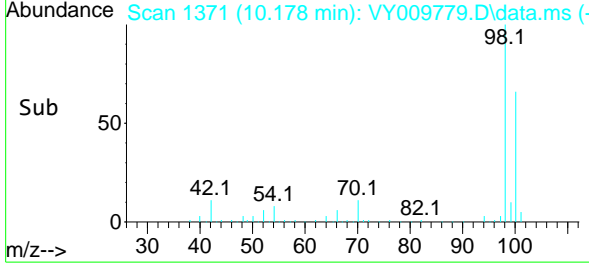


#50
 Toluene-d8
 Concen: 47.729 ug/l
 RT: 10.178 min Scan# 11
 Delta R.T. -0.001 min
 Lab File: VY009779.D
 Acq: 29 Jul 2022 17:49

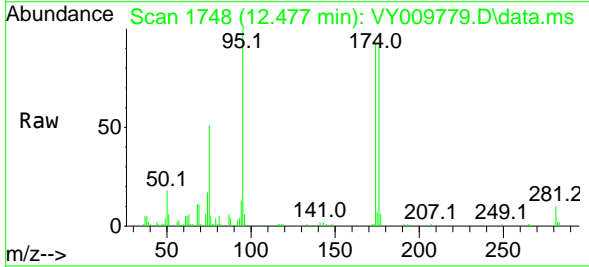
Instrument :
 MSVOA_Y
 ClientSampleId :
 RVE-80



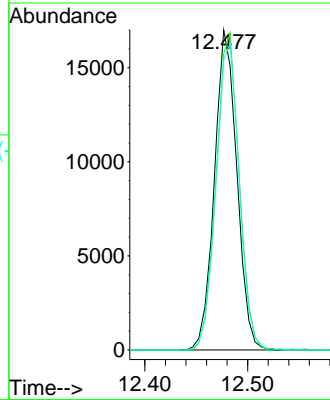
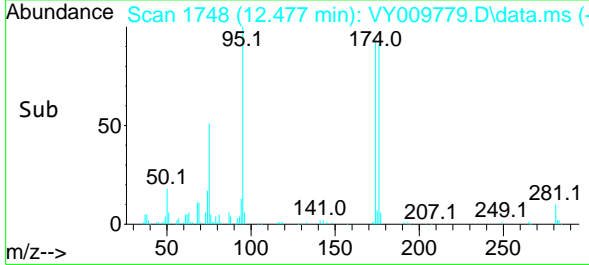
Tgt Ion: 98 Resp: 85457
 Ion Ratio Lower Upper
 98 100
 100 64.8 50.2 75.2

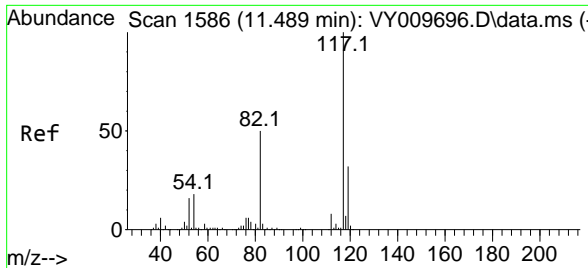


#62
 4-Bromofluorobenzene
 Concen: 31.627 ug/l
 RT: 12.477 min Scan# 1748
 Delta R.T. -0.000 min
 Lab File: VY009779.D
 Acq: 29 Jul 2022 17:49



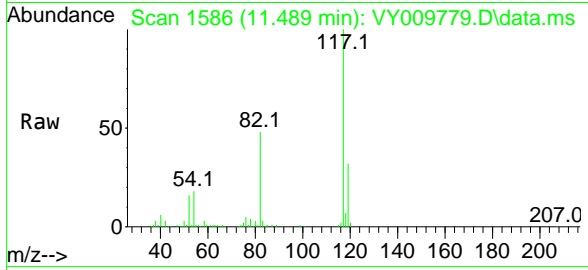
Tgt Ion: 95 Resp: 25678
 Ion Ratio Lower Upper
 95 100
 174 102.0 0.0 177.0
 176 99.1 0.0 175.8





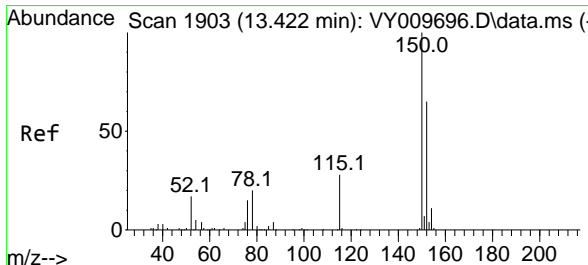
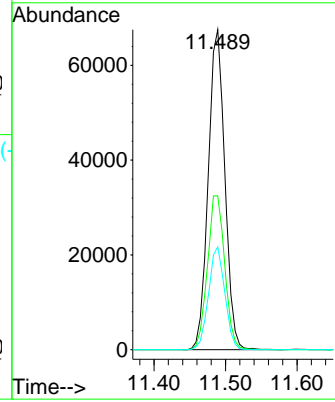
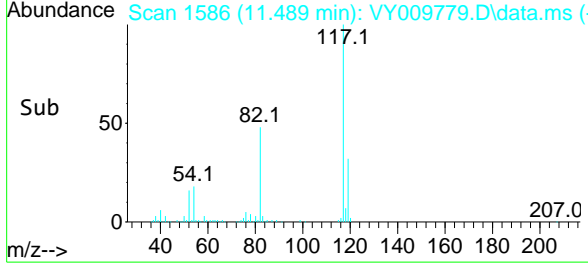
#63
 Chlorobenzene-d5
 Concen: 50.000 ug/l
 RT: 11.489 min Scan# 11
 Delta R.T. 0.000 min
 Lab File: VY009779.D
 Acq: 29 Jul 2022 17:49

Instrument : MSVOA_Y
 ClientSampleId : RVE-80

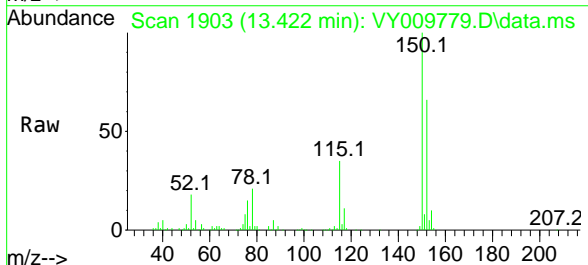


Tgt Ion:117 Resp: 108839

Ion	Ratio	Lower	Upper
117	100		
82	48.1	43.0	64.4
119	32.1	25.4	38.0



#72
 1,4-Dichlorobenzene-d4
 Concen: 50.000 ug/l
 RT: 13.422 min Scan# 1903
 Delta R.T. -0.000 min
 Lab File: VY009779.D
 Acq: 29 Jul 2022 17:49



Tgt Ion:152 Resp: 50493

Ion	Ratio	Lower	Upper
152	100		
115	53.1	28.2	84.7
150	154.4	0.0	347.6

