

Data Path : Z:\voasrv\HPCHEM1\MSVOA_Y\Data\VY072922\
 Data File : VY009773.D
 Acq On : 29 Jul 2022 15:29
 Operator : KP/MD
 Sample : N3895-18
 Misc : 5.07g/5.0mL/MSVOA_Y/SOIL
 ALS Vial : 10 Sample Multiplier: 1

Instrument :
 MSVOA_Y
 ClientSampleId :
 RVE-56

Integration Parameters: RTEINT.P

Integrator: RTE
 Smoothing : ON Filtering: 5
 Sampling : 1 Min Area: 3 % of largest Peak
 Start Thrs: 0.2 Max Peaks: 100
 Stop Thrs : 0 Peak Location: TOP

If leading or trailing edge < 100 prefer < Baseline drop else tangent >
 Peak separation: 5

Method : Z:\voasrv\HPCHEM1\MSVOA_Y\methods\82Y072622S.M
 Title : SW846 8260

Signal : TIC: VY009773.D\data.ms

peak #	R.T. min	first scan	max scan	last scan	PK TY	peak height	corr. area	corr. % max.	% of total
1	4.198	380	390	399	rBV2	2589	7468	1.05%	0.195%
2	4.698	460	472	487	rBV	31820	97814	13.81%	2.554%
3	5.735	633	642	654	rBV4	7014	20237	2.86%	0.528%
4	6.978	831	846	861	rBV	33418	115182	16.26%	3.008%
5	7.710	956	966	972	rBV	79214	188314	26.59%	4.917%
6	7.783	972	978	990	rVB	174283	380796	53.76%	9.943%
7	8.137	1021	1036	1046	rBV2	76366	198934	28.09%	5.195%
8	8.685	1117	1126	1137	rBV	278554	531728	75.07%	13.884%
9	10.179	1363	1371	1379	rBV	307157	524253	74.01%	13.689%
10	10.575	1429	1436	1443	rVB	7095	12774	1.80%	0.334%
11	10.947	1488	1497	1506	rBV	18889	35050	4.95%	0.915%
12	11.313	1552	1557	1565	rVB2	6953	11544	1.63%	0.301%
13	11.490	1579	1586	1598	rBV	437735	708326	100.00%	18.496%
14	12.477	1742	1748	1759	rBV	217102	351498	49.62%	9.178%
15	13.422	1894	1903	1910	rBV	424130	645763	91.17%	16.862%

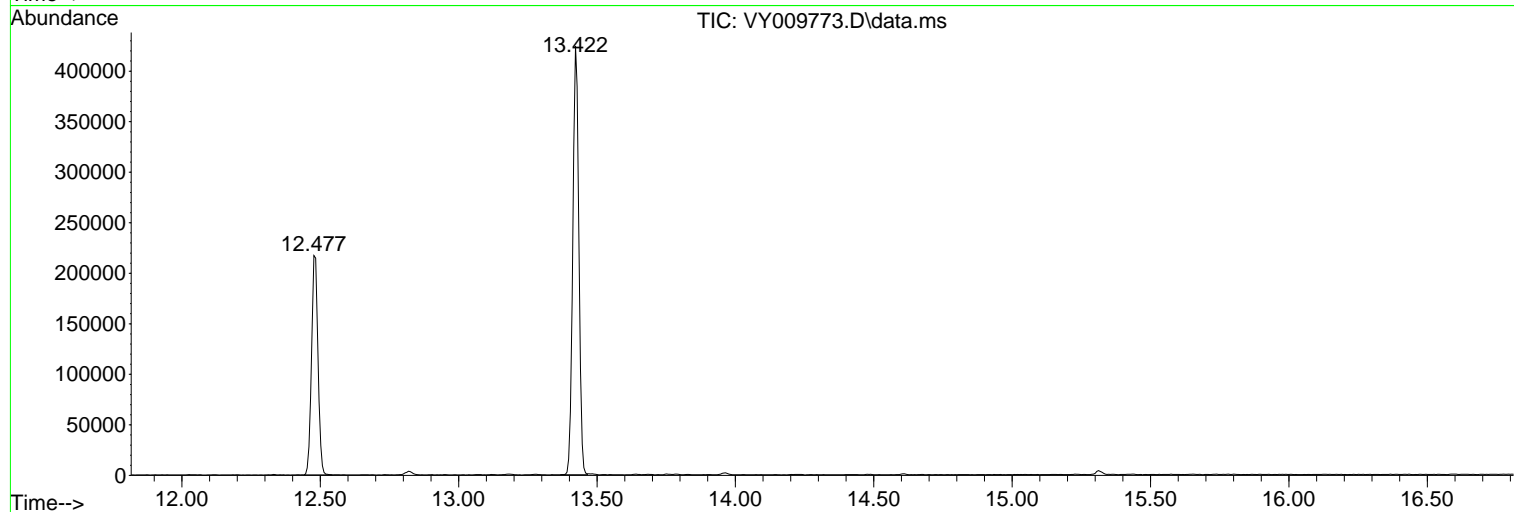
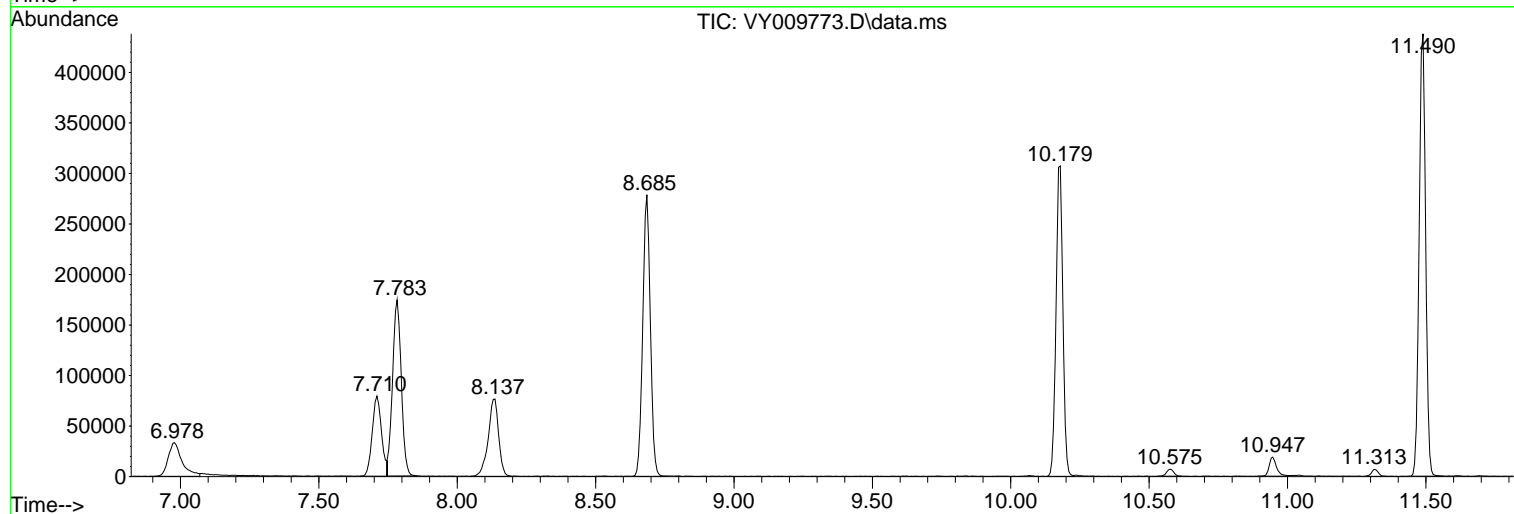
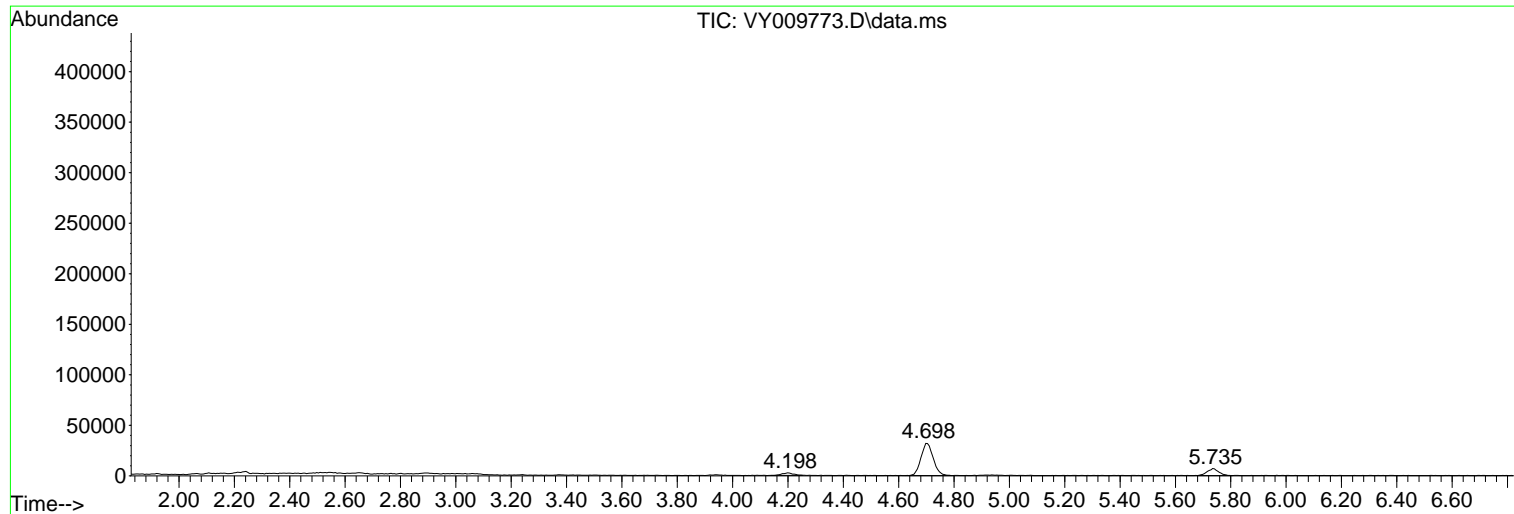
Sum of corrected areas: 3829681

Data Path : Z:\voasrv\HPCHEM1\MSVOA_Y\Data\VY072922\
Data File : VY009773.D
Acq On : 29 Jul 2022 15:29
Operator : KP/MD
Sample : N3895-18
Misc : 5.07g/5.0mL/MSVOA_Y/SOIL
ALS Vial : 10 Sample Multiplier: 1

Instrument :
MSVOA_Y
ClientSampleId :
RVE-56

Quant Method : Z:\voasrv\HPCHEM1\MSVOA_Y\methods\82Y072622S.M
Quant Title : SW846 8260

TIC Library : C:\Database\NIST20.L
TIC Integration Parameters: LSCINT.P



Library Search Compound Report

Data Path : Z:\voasrv\HPCHEM1\MSVOA_Y\Data\VY072922\
Data File : VY009773.D
Acq On : 29 Jul 2022 15:29
Operator : KP/MD
Sample : N3895-18
Misc : 5.07g/5.0mL/MSVOA_Y/SOIL
ALS Vial : 10 Sample Multiplier: 1

Instrument :
MSVOA_Y
ClientSampleId :
RVE-56

Quant Method : Z:\voasrv\HPCHEM1\MSVOA_Y\methods\82Y072622S.M
Quant Title : SW846 8260

TIC Library : C:\Database\NIST20.L
TIC Integration Parameters: LSCINT.P

No Library Search Compounds Detected

Data Path : Z:\voasrv\HPCHEM1\MSVOA_Y\Data\VY072922\
Data File : VY009773.D
Acq On : 29 Jul 2022 15:29
Operator : KP/MD
Sample : N3895-18
Misc : 5.07g/5.0mL/MSVOA_Y/SOIL
ALS Vial : 10 Sample Multiplier: 1

Instrument :
MSVOA_Y
ClientSampleId :
RVE-56

Quant Method : Z:\voasrv\HPCHEM1\MSVOA_Y\methods\82Y072622S.M
Quant Title : SW846 8260

TIC Library : C:\Database\NIST0.L
TIC Integration Parameters: LSCINT.P

TIC Top Hit name	RT	EstConc	Units	Response	--Internal Standard--		
					#	RT	Resp Conc
