

Data Path : Z:\VOASRV\HPCHEM1\MSVOA Y\DATA\VY080320\
 Data File : VY003410.D
 Acq On : 03 Aug 2020 12:27
 Operator : SY/MD
 Sample : L3511-02
 Misc : 2.74G/5ML/MSVOA Y/SOIL
 ALS Vial : 7 Sample Multiplier: 1

Instrument :
 MSVOA_Y
 ClientSampleId :
 TP-1

Quant Time: Aug 04 08:32:50 2020
 Quant Method : Z:\VOASRV\HPCHEM1\MSVOA_Y\METHODS\82Y073120S.M
 Quant Title : SW846 8260
 QLast Update : Fri Jul 31 13:09:26 2020
 Response via : Initial Calibration

Internal Standards	R.T.	QIon	Response	Conc	Units	Dev(Min)
1) Pentafluorobenzene	7.80	168	408511	50.00	ug/l	0.00
34) 1,4-Difluorobenzene	8.69	114	635710	50.00	ug/l	0.00
63) Chlorobenzene-d5	11.49	117	595388	50.00	ug/l	0.00
72) 1,4-Dichlorobenzene-d4	13.42	152	292732	50.00	ug/l	0.00

System Monitoring Compounds	R.T.	QIon	Response	Conc	Units	Dev(Min)
33) 1,2-Dichloroethane-d4	8.14	65	209518	53.94	ug/l	0.00
Spiked Amount				50.000		
			Recovery	=	107.88%	
35) Dibromofluoromethane	7.72	113	194295	51.89	ug/l	0.00
Spiked Amount				50.000		
			Recovery	=	103.78%	
50) Toluene-d8	10.18	98	777545	53.03	ug/l	0.00
Spiked Amount				50.000		
			Recovery	=	106.06%	
62) 4-Bromofluorobenzene	12.48	95	253900	50.68	ug/l	0.00
Spiked Amount				50.000		
			Recovery	=	101.36%	

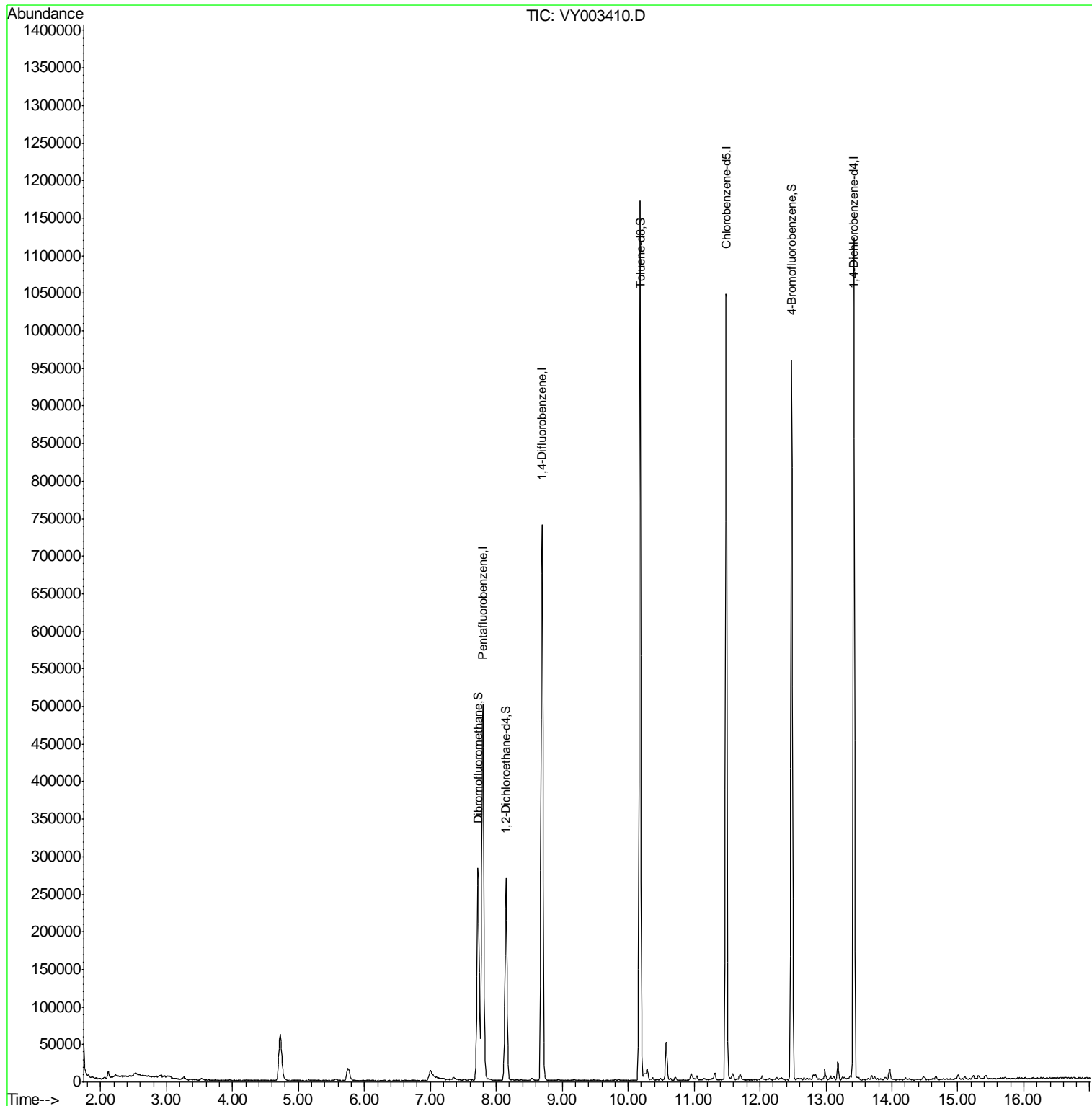
Target Compounds Qvalue

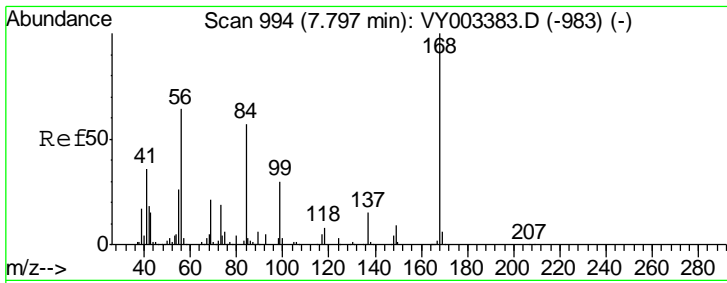
(#) = qualifier out of range (m) = manual integration (+) = signals summed

Data Path : Z:\VOASRV\HPCHEM1\MSVOA Y\DATA\VY080320\
 Data File : VY003410.D
 Acq On : 03 Aug 2020 12:27
 Operator : SY/MD
 Sample : L3511-02
 Misc : 2.74G/5ML/MSVOA Y/SOIL
 ALS Vial : 7 Sample Multiplier: 1

Instrument :
 MSVOA_Y
 ClientSampleId :
 TP-1

Quant Time: Aug 04 08:32:50 2020
 Quant Method : Z:\VOASRV\HPCHEM1\MSVOA_Y\METHODS\82Y073120S.M
 Quant Title : SW846 8260
 QLast Update : Fri Jul 31 13:09:26 2020
 Response via : Initial Calibration

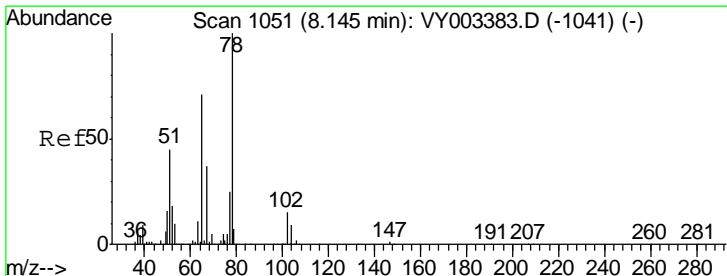
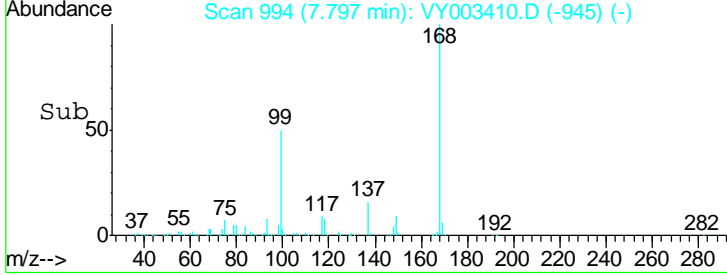
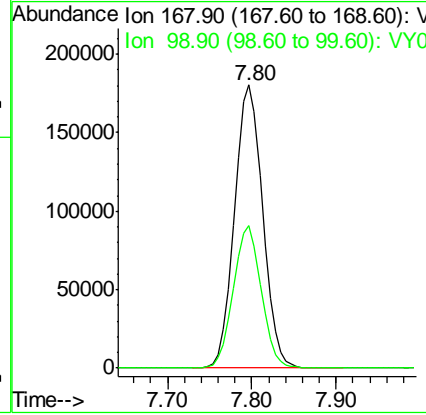
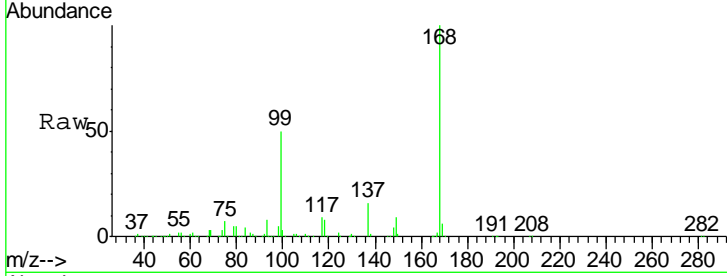




#1
 Pentafluorobenzene
 Concen: 50.000 ug/l
 RT: 7.80 min Scan# 994
 Delta R.T. -0.00 min
 Lab File: VY003410.D
 Acq: 03 Aug 2020 12:27

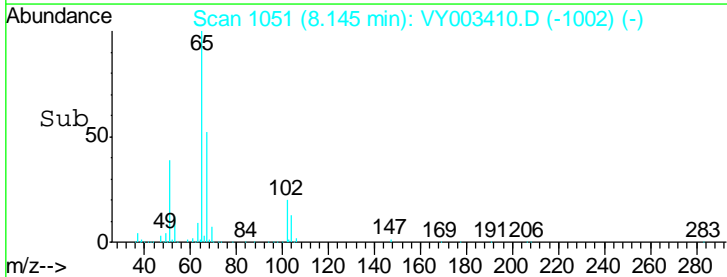
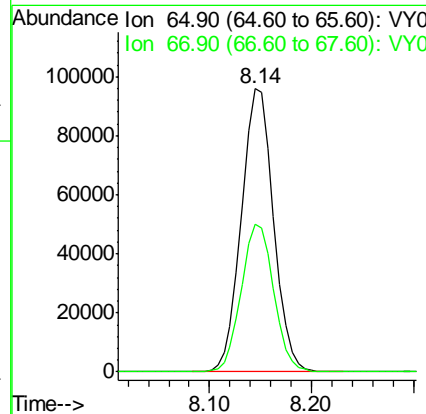
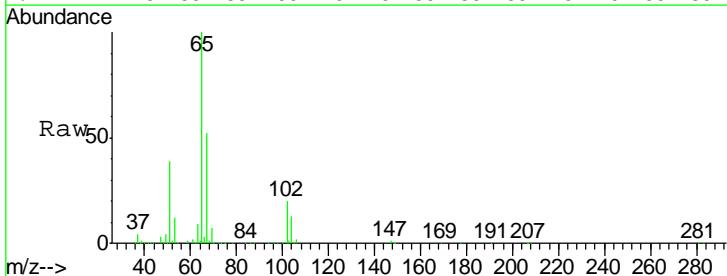
Instrument :
 MSVOA_Y
 ClientSampled :
 TP-1

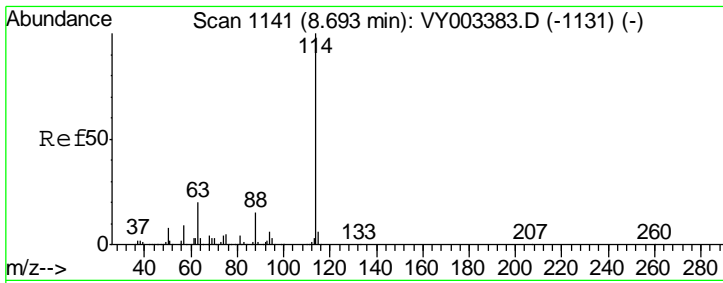
Tgt Ion	Resp	Lower	Upper
168	100		
99	50.4	38.8	58.2



#33
 1,2-Dichloroethane-d4
 Concen: 53.941 ug/l
 RT: 8.14 min Scan# 1051
 Delta R.T. -0.00 min
 Lab File: VY003410.D
 Acq: 03 Aug 2020 12:27

Tgt Ion	Resp	Lower	Upper
65	100		
67	53.0	0.0	106.6

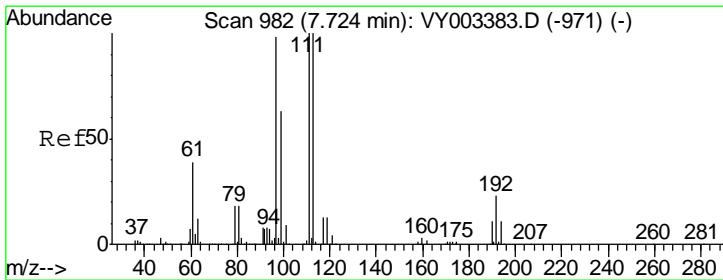
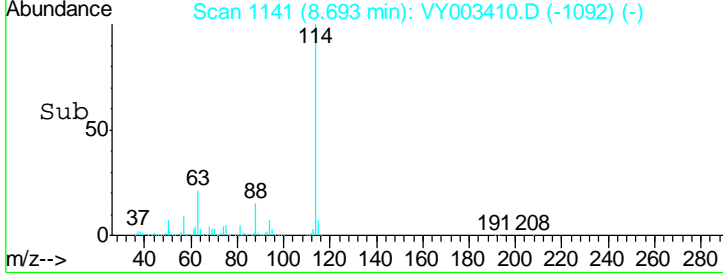
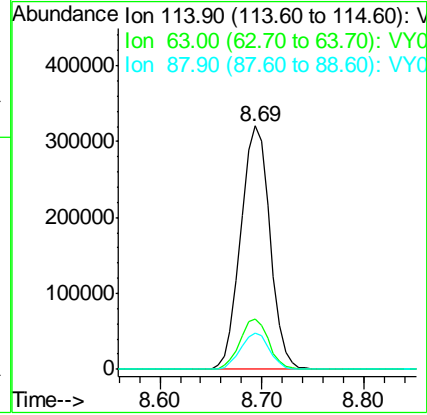
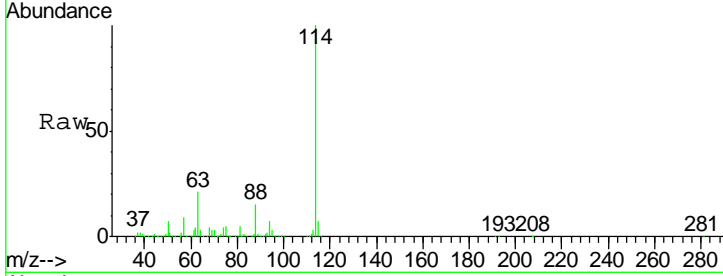




#34
 1,4-Difluorobenzene
 Concen: 50.000 ug/l
 RT: 8.69 min Scan# 1141
 Delta R.T. -0.00 min
 Lab File: VY003410.D
 Acq: 03 Aug 2020 12:27

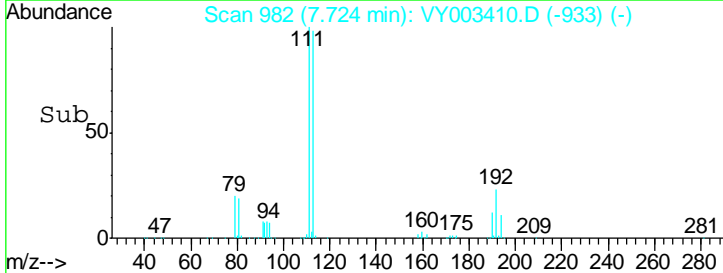
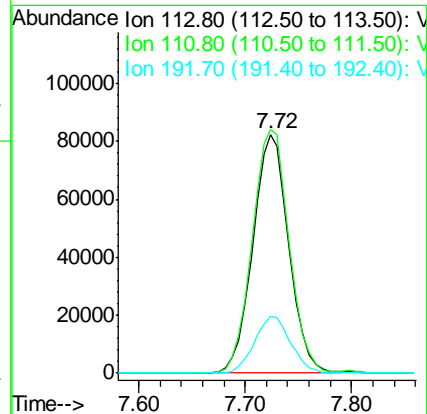
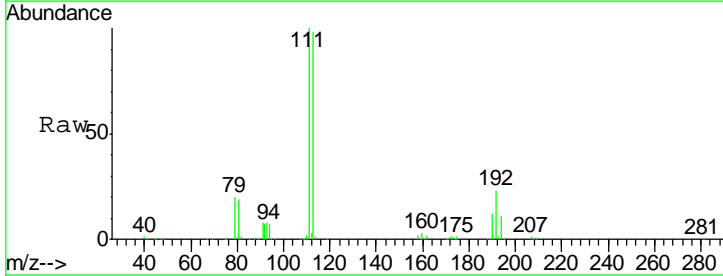
Instrument :
 MSVOA_Y
 ClientSampled :
 TP-1

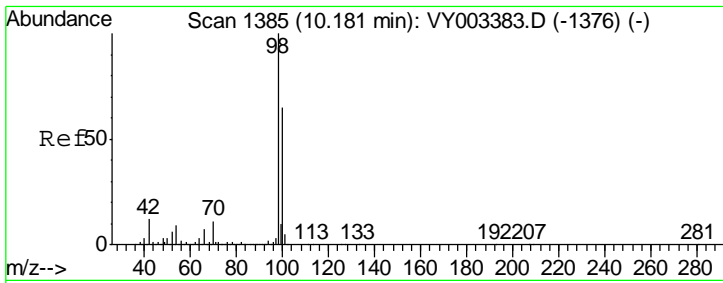
Tgt Ion	Resp	Lower	Upper
114	100		
63	20.6	0.0	40.6
88	15.0	0.0	29.2



#35
 Dibromofluoromethane
 Concen: 51.885 ug/l
 RT: 7.72 min Scan# 982
 Delta R.T. -0.00 min
 Lab File: VY003410.D
 Acq: 03 Aug 2020 12:27

Tgt Ion	Resp	Lower	Upper
113	100		
111	104.7	83.0	124.4
192	23.8	18.8	28.2

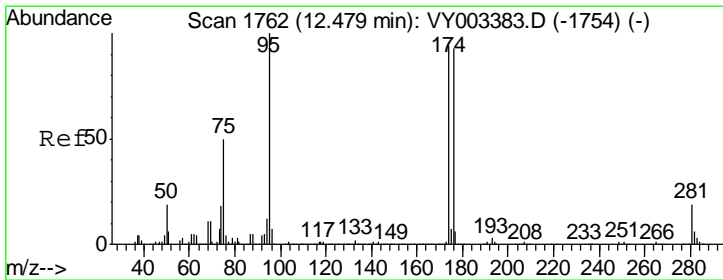
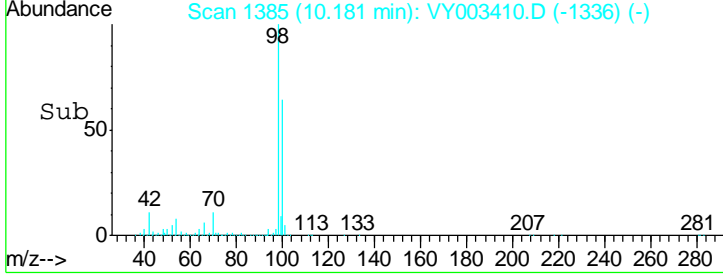
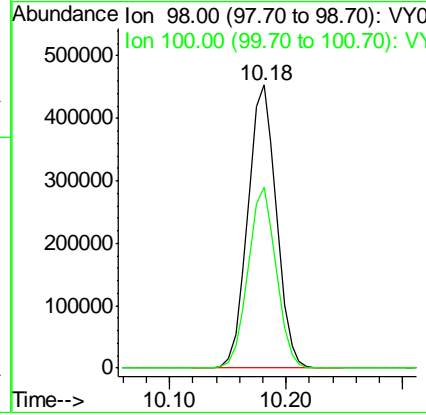
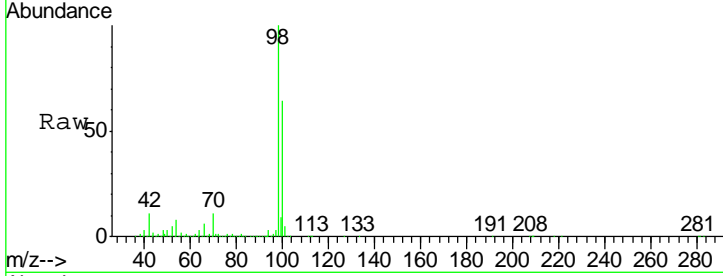




#50
 Toluene-d8
 Concen: 53.025 ug/l
 RT: 10.18 min Scan# 1385
 Delta R.T. -0.00 min
 Lab File: VY003410.D
 Acq: 03 Aug 2020 12:27

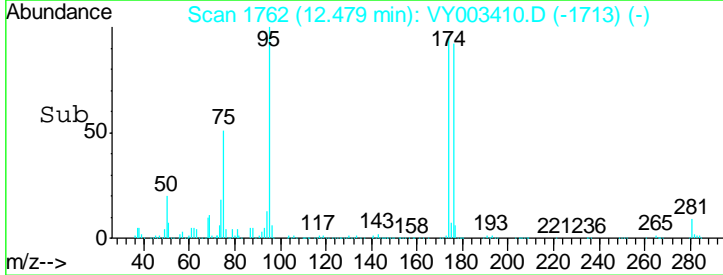
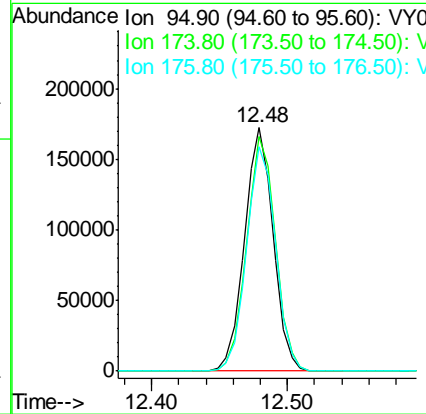
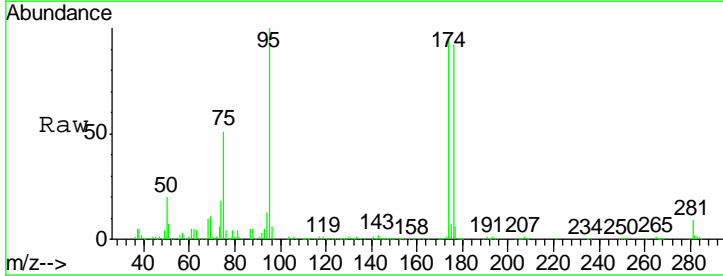
Instrument : MSVOA_Y
 ClientSampled : TP-1

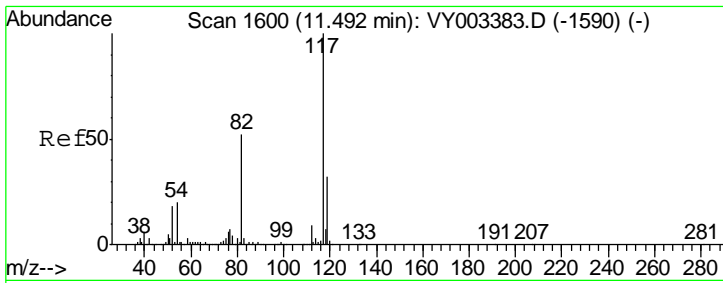
Tgt Ion	Resp	Lower	Upper
98	777545		
100	100		
100	62.7	51.3	76.9



#62
 4-Bromofluorobenzene
 Concen: 50.676 ug/l
 RT: 12.48 min Scan# 1762
 Delta R.T. -0.00 min
 Lab File: VY003410.D
 Acq: 03 Aug 2020 12:27

Tgt Ion	Resp	Lower	Upper
95	253900		
174	96.8	0.0	190.0
176	93.2	0.0	184.4

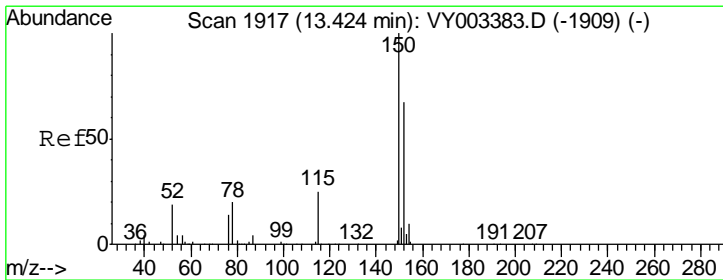
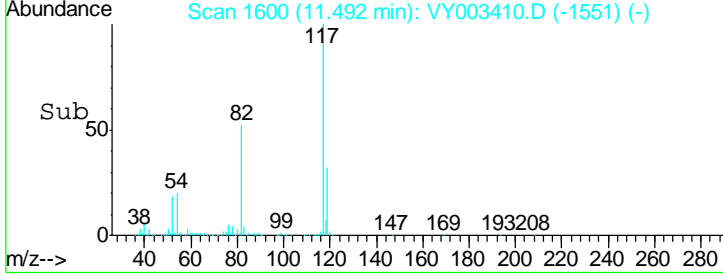
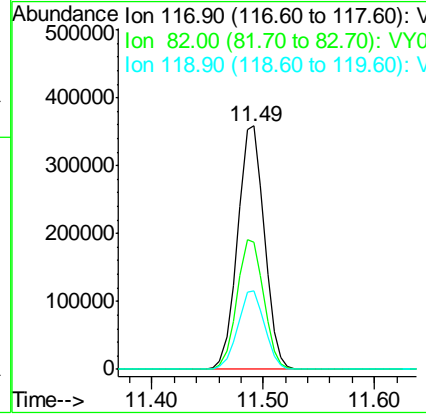
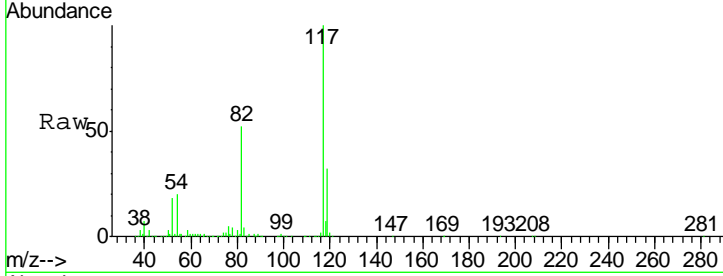




#63
 Chlorobenzene-d5
 Concen: 50.000 ug/l
 RT: 11.49 min Scan# 1600
 Delta R.T. -0.00 min
 Lab File: VY003410.D
 Acq: 03 Aug 2020 12:27

Instrument : MSVOA_Y
 ClientSampled : TP-1

Tgt Ion	Resp	Lower	Upper
117	595388		
82	52.4	41.9	62.9
119	32.0	25.4	38.0



#72
 1,4-Dichlorobenzene-d4
 Concen: 50.000 ug/l
 RT: 13.42 min Scan# 1917
 Delta R.T. -0.00 min
 Lab File: VY003410.D
 Acq: 03 Aug 2020 12:27

Tgt Ion	Resp	Lower	Upper
152	292732		
115	54.2	27.2	81.5
150	158.3	0.0	346.8

