

Data Path : Z:\voasrv\HPCHEM1\MSVOA_Y\Data\VY080621\
 Data File : VY005575.D
 Acq On : 06 Aug 2021 16:59
 Operator : SY/MD
 Sample : M3308-01
 Misc : 5.09G/5ML/MSVOA_Y/SOIL
 ALS Vial : 16 Sample Multiplier: 1

Instrument :
 MSVOA_Y
 ClientSampleId :

Quant Time: Aug 07 06:20:11 2021
 Quant Method : Z:\voasrv\HPCHEM1\MSVOA_Y\methods\82Y080221S.M
 Quant Title : SW846 8260
 QLast Update : Tue Aug 03 04:52:05 2021
 Response via : Initial Calibration

Compound	R.T.	QIon	Response	Conc	Units	Dev(Min)

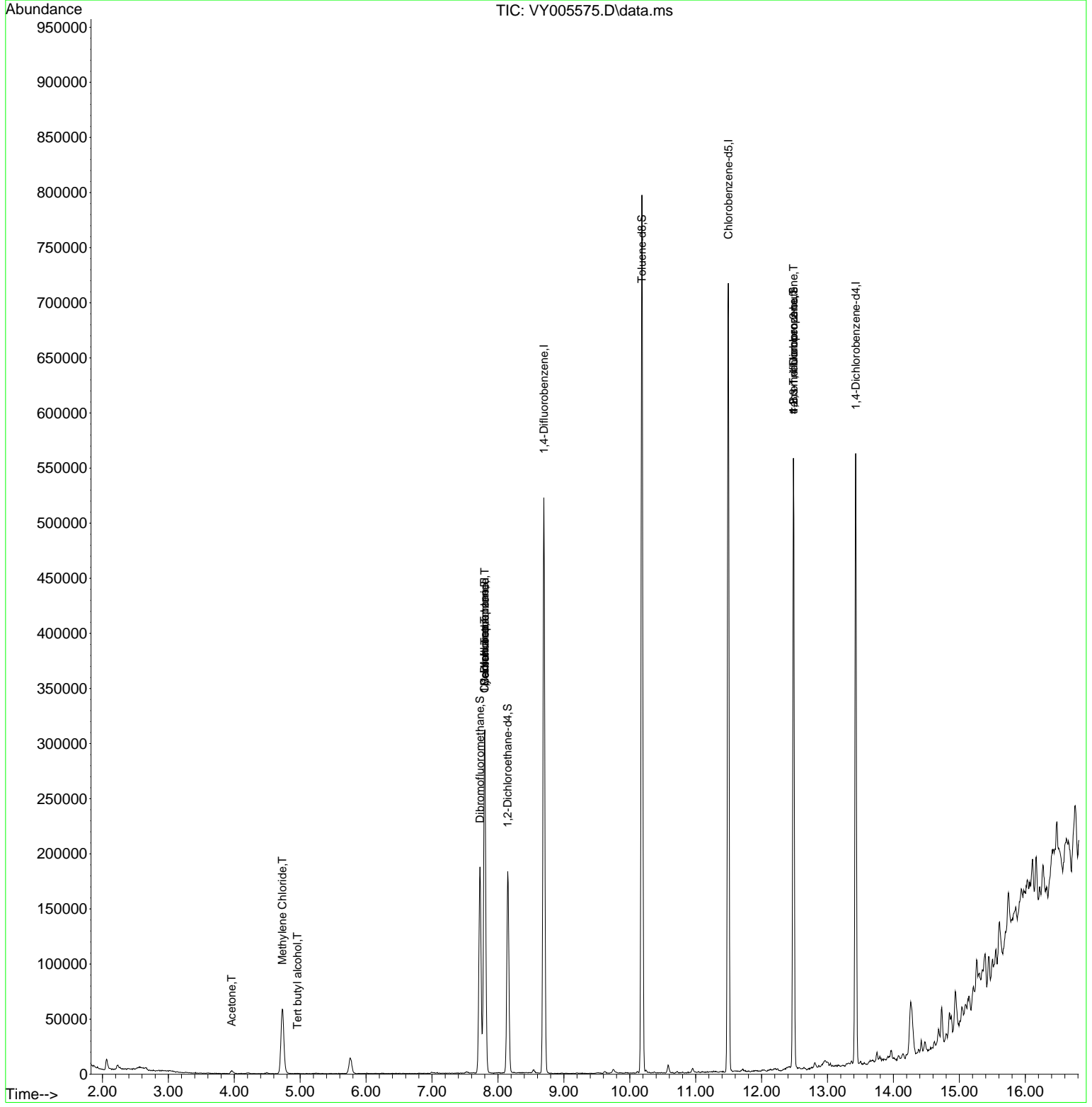
Internal Standards						
1) Pentafluorobenzene	7.801	168	252592	50.000	ug/l	0.00
34) 1,4-Difluorobenzene	8.697	114	428037	50.000	ug/l	0.00
63) Chlorobenzene-d5	11.495	117	383935	50.000	ug/l	0.00
72) 1,4-Dichlorobenzene-d4	13.428	152	145346	50.000	ug/l	0.00
System Monitoring Compounds						
33) 1,2-Dichloroethane-d4	8.148	65	147793	57.803	ug/l	0.00
Spiked Amount	50.000	Range	50 - 163	Recovery	=	115.600%
35) Dibromofluoromethane	7.728	113	126958	52.977	ug/l	0.00
Spiked Amount	50.000	Range	54 - 147	Recovery	=	105.960%
50) Toluene-d8	10.184	98	520184	51.756	ug/l	0.00
Spiked Amount	50.000	Range	49 - 140	Recovery	=	103.520%
62) 4-Bromofluorobenzene	12.483	95	160539	48.235	ug/l	0.00
Spiked Amount	50.000	Range	25 - 144	Recovery	=	96.460%
Target Compounds						
						Qvalue
11) Tert butyl alcohol	4.960	59	414	1.638	ug/l #	73
16) Acetone	3.960	43	4557	7.069	ug/l	96
20) Methylene Chloride	4.728	84	45369	13.305	ug/l	92
31) Cyclohexane	7.795	56	5360	1.222	ug/l #	30
36) 1,1-Dichloropropene	7.795	75	18078	4.503	ug/l #	48
38) Carbon Tetrachloride	7.801	117	23153	5.306	ug/l #	16
76) 1,2,3-Trichloropropane	12.483	75	87436	58.051	ug/l #	100
81) trans-1,4-Dichloro-2-b...	12.483	75	87436	117.022	ug/l #	11

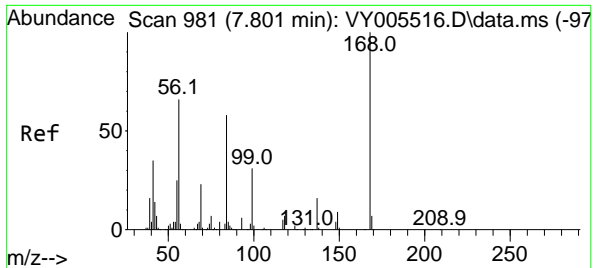
(#) = qualifier out of range (m) = manual integration (+) = signals summed

Data Path : Z:\voasrv\HPCHEM1\MSVOA_Y\Data\VY080621\
 Data File : VY05575.D
 Acq On : 06 Aug 2021 16:59
 Operator : SY/MD
 Sample : M3308-01
 Misc : 5.09G/5ML/MSVOA_Y/SOIL
 ALS Vial : 16 Sample Multiplier: 1

Instrument :
 MSVOA_Y
 ClientSampleId :

Quant Time: Aug 07 06:20:11 2021
 Quant Method : Z:\voasrv\HPCHEM1\MSVOA_Y\methods\82Y080221S.M
 Quant Title : SW846 8260
 QLast Update : Tue Aug 03 04:52:05 2021
 Response via : Initial Calibration

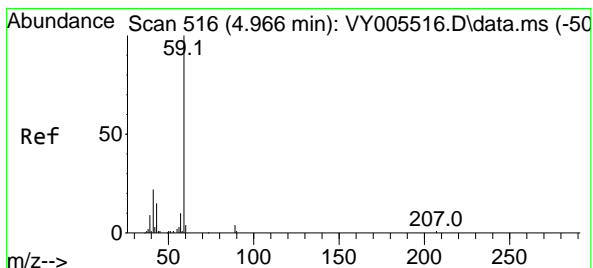
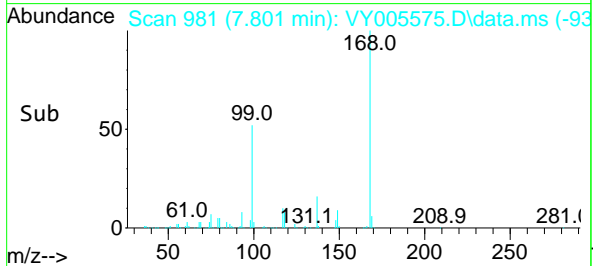
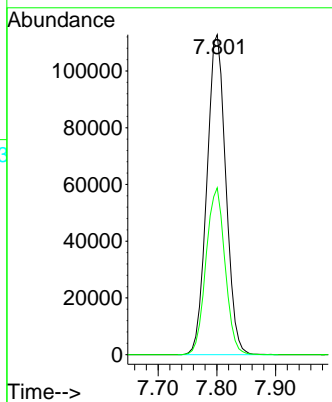
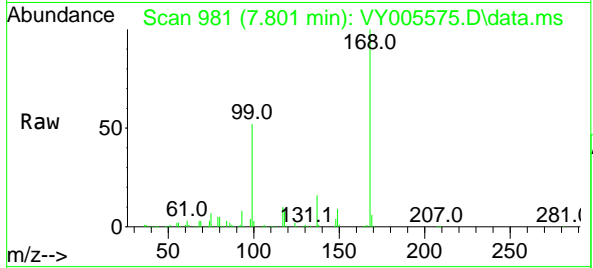




#1
 Pentafluorobenzene
 Concen: 50.000 ug/l
 RT: 7.801 min Scan# 981
 Delta R.T. -0.000 min
 Lab File: VY005575.D
 Acq: 06 Aug 2021 16:59

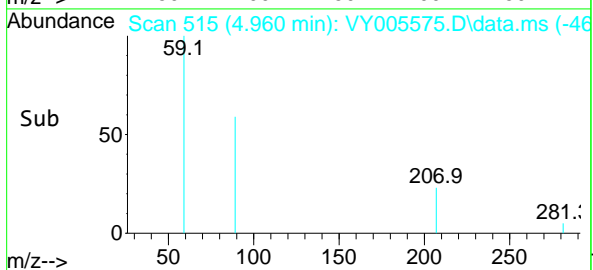
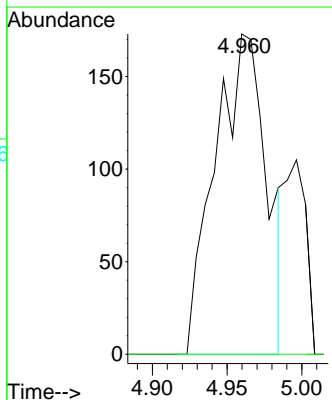
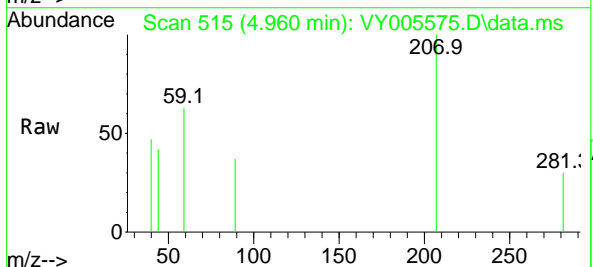
Instrument :
 MSVOA_Y
 ClientSampled :

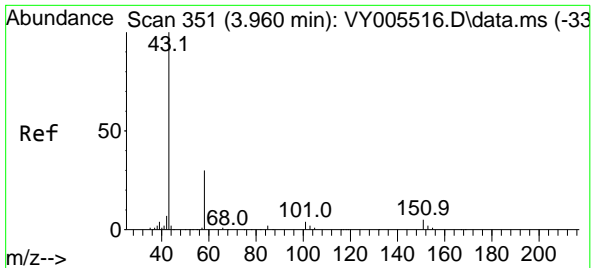
Tgt Ion:168 Resp: 252592
 Ion Ratio Lower Upper
 168 100
 99 52.2 38.9 58.3



#11
 Tert butyl alcohol
 Concen: 1.638 ug/l
 RT: 4.960 min Scan# 515
 Delta R.T. -0.007 min
 Lab File: VY005575.D
 Acq: 06 Aug 2021 16:59

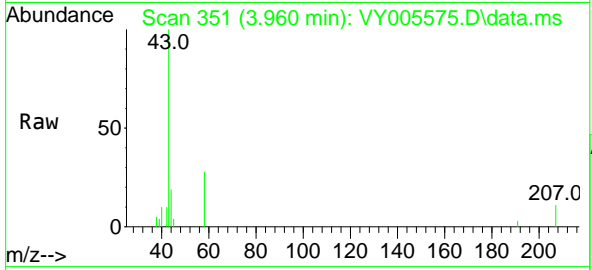
Tgt Ion: 59 Resp: 414
 Ion Ratio Lower Upper
 59 100
 57 0.0 8.0 12.0#



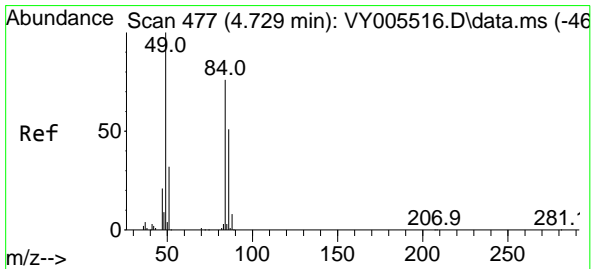
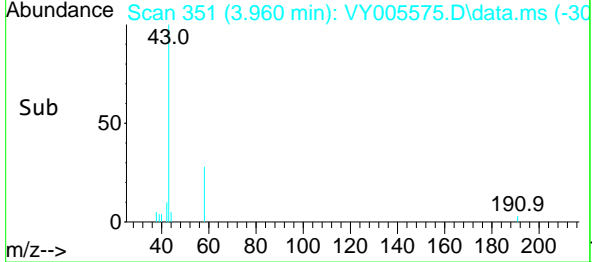
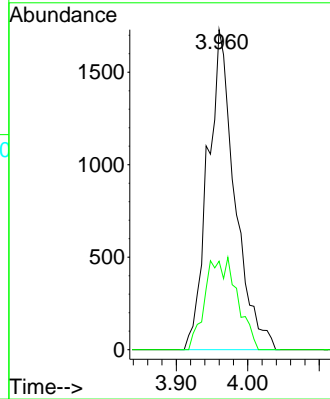


#16
 Acetone
 Concen: 7.069 ug/l
 RT: 3.960 min Scan# 351
 Delta R.T. -0.000 min
 Lab File: VY005575.D
 Acq: 06 Aug 2021 16:59

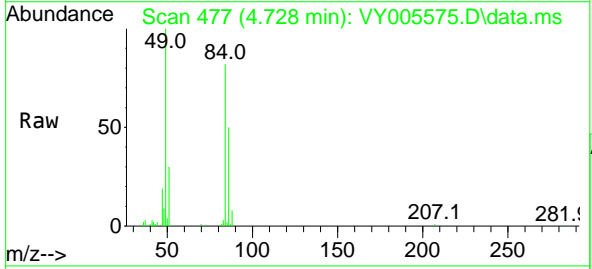
Instrument :
 MSVOA_Y
 ClientSampled :



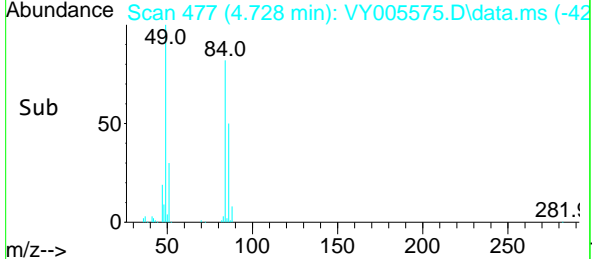
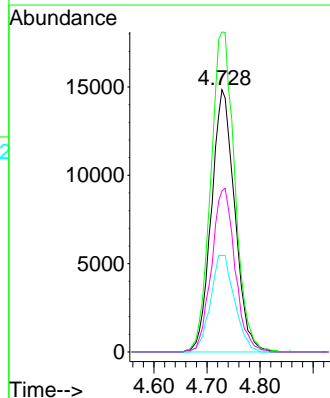
Tgt Ion: 43 Resp: 4557
 Ion Ratio Lower Upper
 43 100
 58 27.6 23.8 35.6

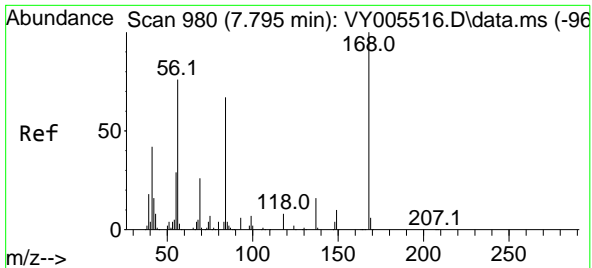


#20
 Methylene Chloride
 Concen: 13.305 ug/l
 RT: 4.728 min Scan# 477
 Delta R.T. -0.001 min
 Lab File: VY005575.D
 Acq: 06 Aug 2021 16:59



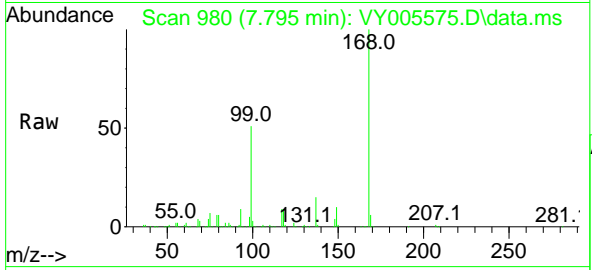
Tgt Ion: 84 Resp: 45369
 Ion Ratio Lower Upper
 84 100
 49 122.0 105.8 158.6
 51 36.8 33.4 50.2
 86 61.4 54.2 81.4



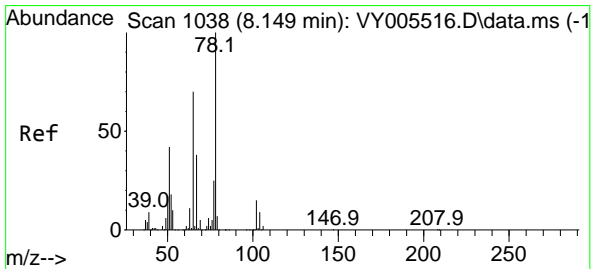
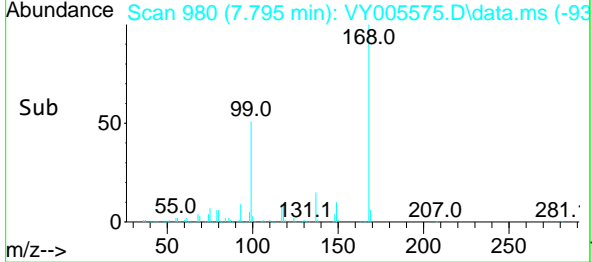
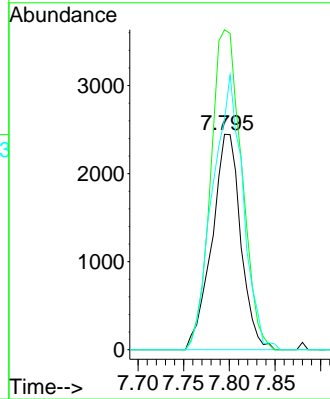


#31
 Cyclohexane
 Concen: 1.222 ug/l
 RT: 7.795 min Scan# 980
 Delta R.T. -0.000 min
 Lab File: VY005575.D
 Acq: 06 Aug 2021 16:59

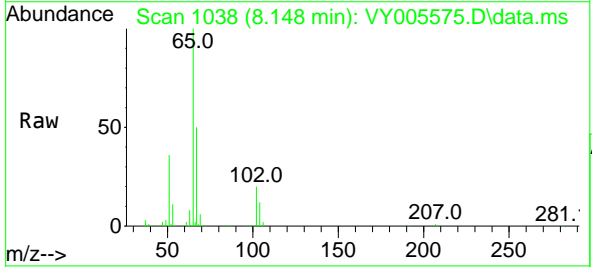
Instrument :
 MSVOA_Y
 ClientSampled :



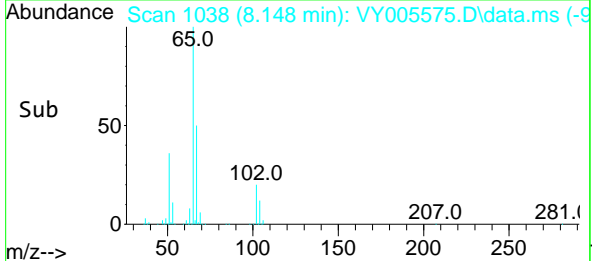
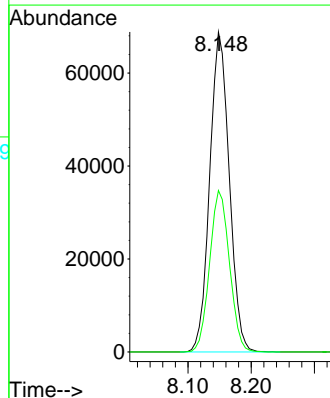
Tgt Ion: 56 Resp: 5360
 Ion Ratio Lower Upper
 56 100
 69 148.6 27.7 41.5#
 84 106.9 70.9 106.3#

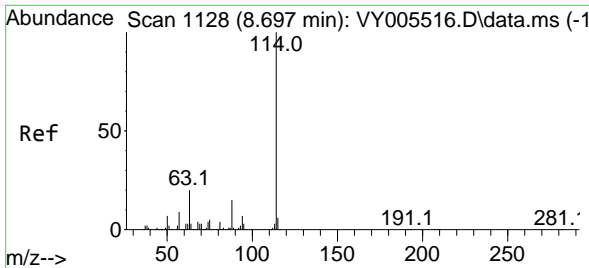


#33
 1,2-Dichloroethane-d4
 Concen: 57.803 ug/l
 RT: 8.148 min Scan# 1038
 Delta R.T. -0.000 min
 Lab File: VY005575.D
 Acq: 06 Aug 2021 16:59



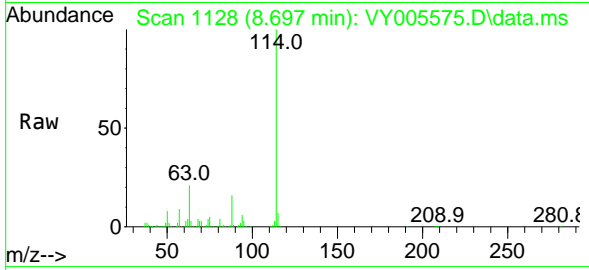
Tgt Ion: 65 Resp: 147793
 Ion Ratio Lower Upper
 65 100
 67 51.2 0.0 103.4





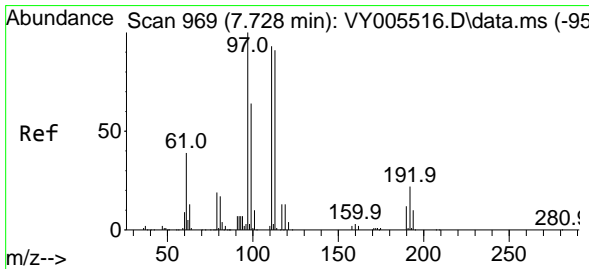
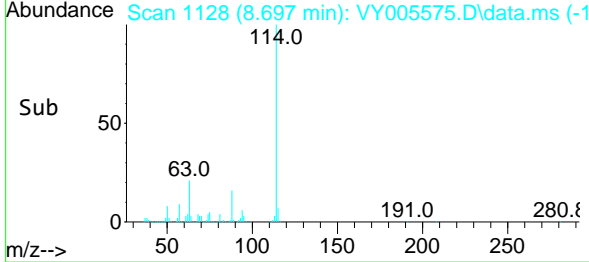
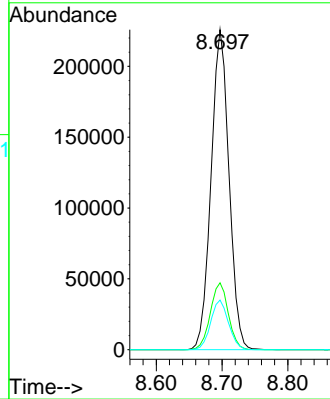
#34
 1,4-Difluorobenzene
 Concen: 50.000 ug/l
 RT: 8.697 min Scan# 1128
 Delta R.T. -0.000 min
 Lab File: VY005575.D
 Acq: 06 Aug 2021 16:59

Instrument :
 MSVOA_Y
 ClientSampled :

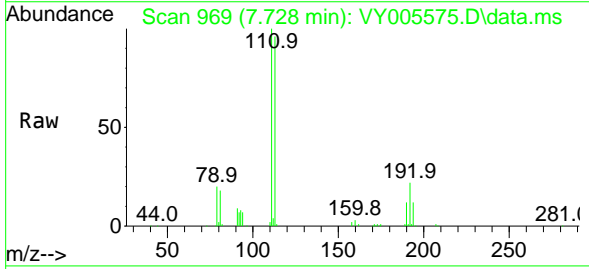


Tgt Ion:114 Resp: 428037

Ion	Ratio	Lower	Upper
114	100		
63	20.9	0.0	39.2
88	15.5	0.0	30.8

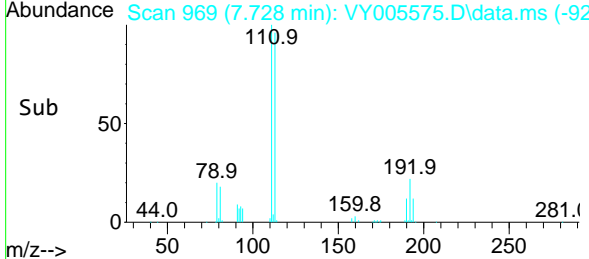
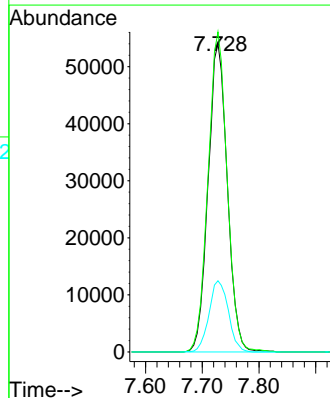


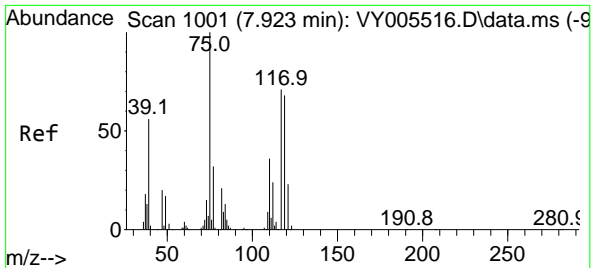
#35
 Dibromofluoromethane
 Concen: 52.977 ug/l
 RT: 7.728 min Scan# 969
 Delta R.T. -0.000 min
 Lab File: VY005575.D
 Acq: 06 Aug 2021 16:59



Tgt Ion:113 Resp: 126958

Ion	Ratio	Lower	Upper
113	100		
111	103.6	81.9	122.9
192	23.3	19.2	28.8

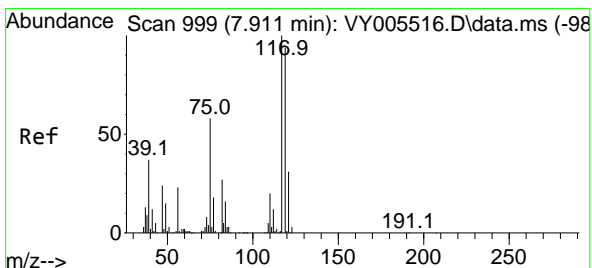
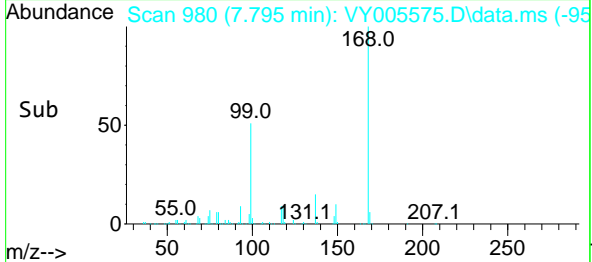
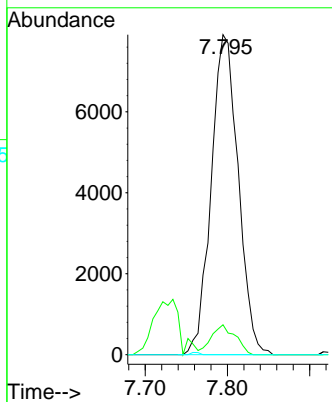
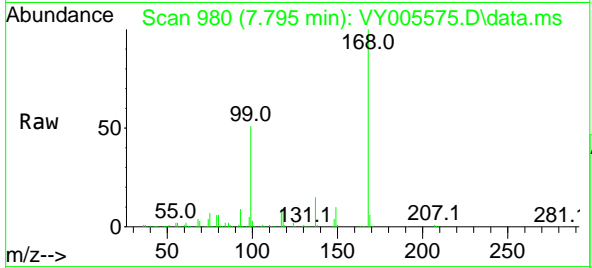




#36
 1,1-Dichloropropene
 Concen: 4.503 ug/l
 RT: 7.795 min Scan# 980
 Delta R.T. -0.129 min
 Lab File: VY005575.D
 Acq: 06 Aug 2021 16:59

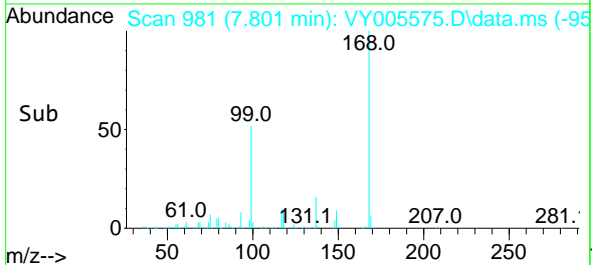
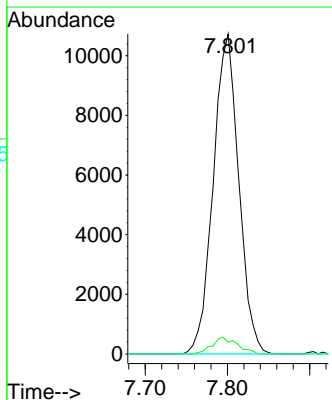
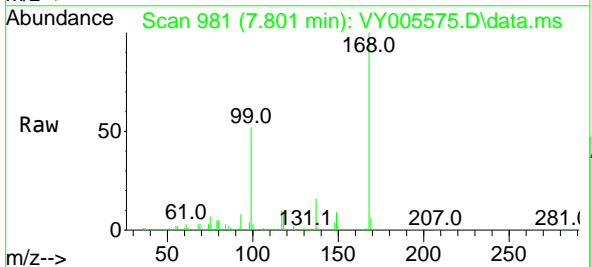
Instrument :
 MSVOA_Y
 ClientSampled :

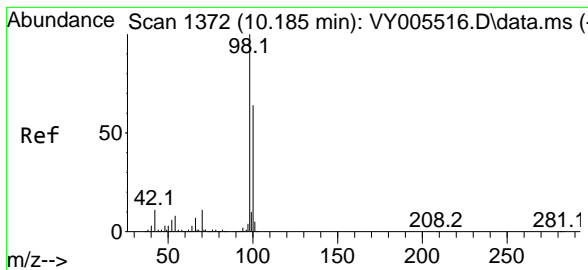
Tgt Ion	Resp	Lower	Upper
75	18078		
110	8.3	18.1	54.1#
77	0.0	25.1	37.7#



#38
 Carbon Tetrachloride
 Concen: 5.306 ug/l
 RT: 7.801 min Scan# 981
 Delta R.T. -0.110 min
 Lab File: VY005575.D
 Acq: 06 Aug 2021 16:59

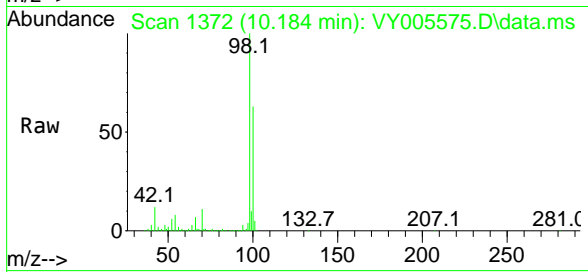
Tgt Ion	Resp	Lower	Upper
117	23153		
119	3.7	75.4	113.0#
121	0.0	25.1	37.7#



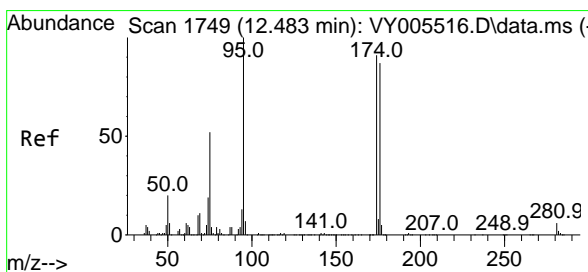
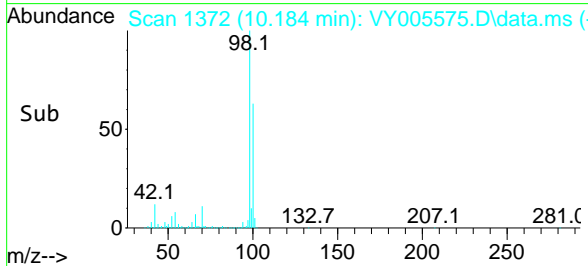
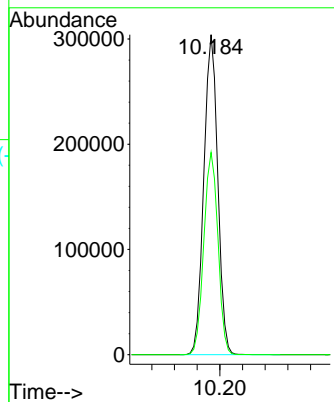


#50
 Toluene-d8
 Concen: 51.756 ug/l
 RT: 10.184 min Scan# 1372
 Delta R.T. -0.000 min
 Lab File: VY005575.D
 Acq: 06 Aug 2021 16:59

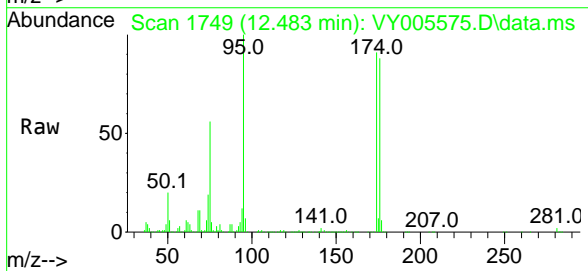
Instrument :
 MSVOA_Y
 ClientSampled :



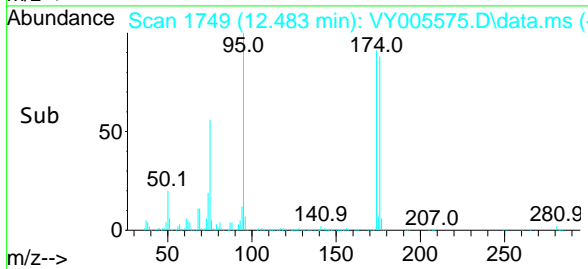
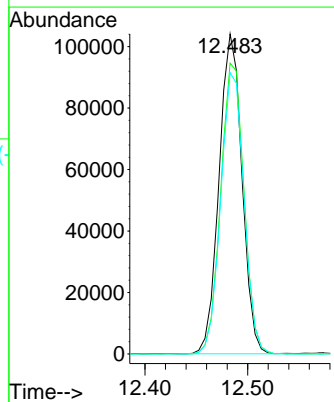
Tgt Ion: 98 Resp: 520184
 Ion Ratio Lower Upper
 98 100
 100 64.0 51.3 76.9

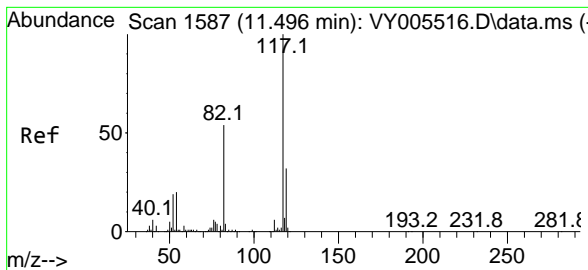


#62
 4-Bromofluorobenzene
 Concen: 48.235 ug/l
 RT: 12.483 min Scan# 1749
 Delta R.T. -0.000 min
 Lab File: VY005575.D
 Acq: 06 Aug 2021 16:59



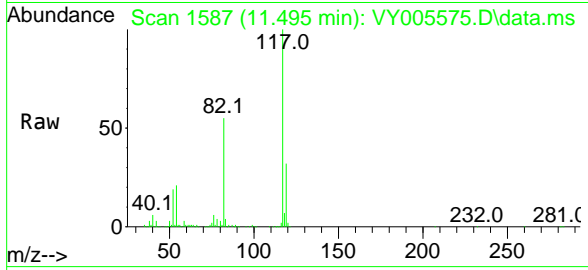
Tgt Ion: 95 Resp: 160539
 Ion Ratio Lower Upper
 95 100
 174 92.6 0.0 191.4
 176 89.2 0.0 183.6





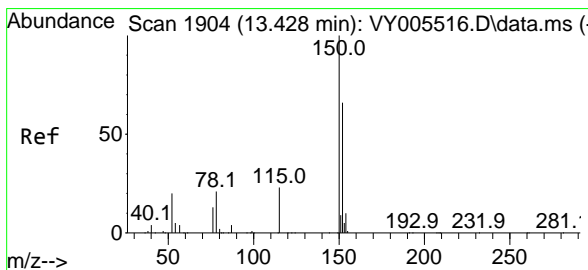
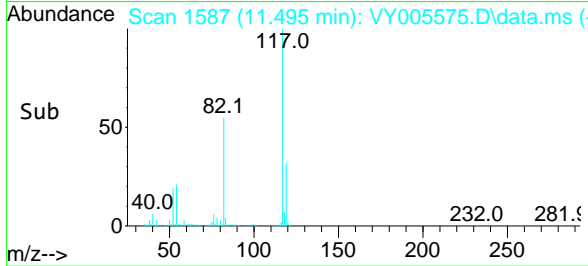
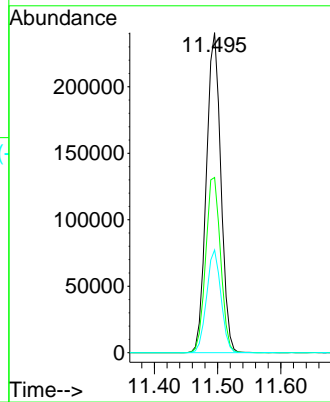
#63
 Chlorobenzene-d5
 Concen: 50.000 ug/l
 RT: 11.495 min Scan# 1587
 Delta R.T. -0.000 min
 Lab File: VY005575.D
 Acq: 06 Aug 2021 16:59

Instrument :
 MSVOA_Y
 ClientSampled :

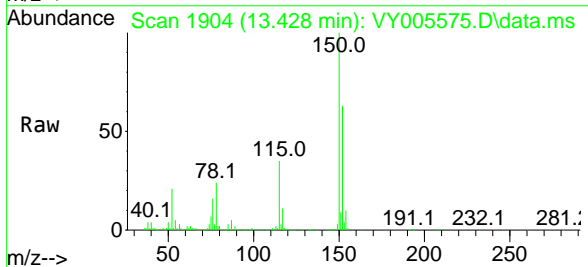


Tgt Ion:117 Resp: 383935

Ion	Ratio	Lower	Upper
117	100		
82	54.7	43.5	65.3
119	32.1	25.5	38.3

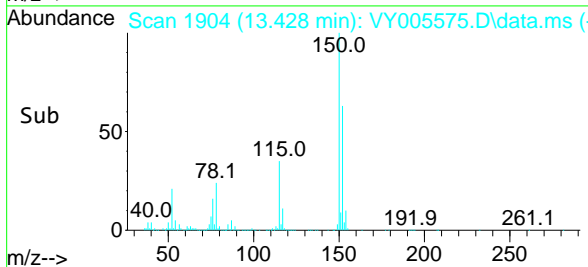
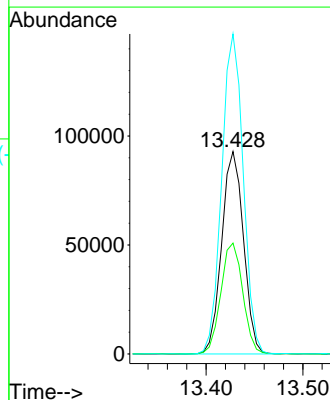


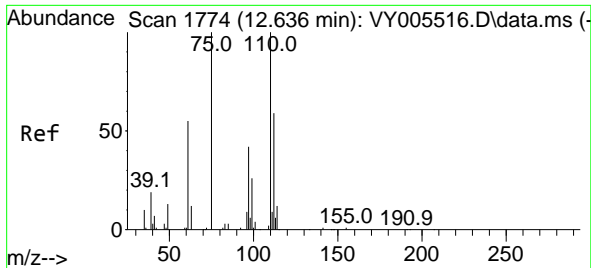
#72
 1,4-Dichlorobenzene-d4
 Concen: 50.000 ug/l
 RT: 13.428 min Scan# 1904
 Delta R.T. -0.000 min
 Lab File: VY005575.D
 Acq: 06 Aug 2021 16:59



Tgt Ion:152 Resp: 145346

Ion	Ratio	Lower	Upper
152	100		
115	55.2	27.3	81.9
150	156.2	0.0	350.2

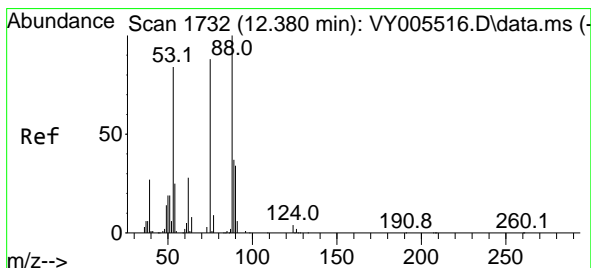
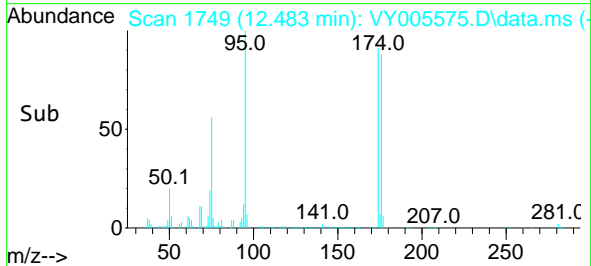
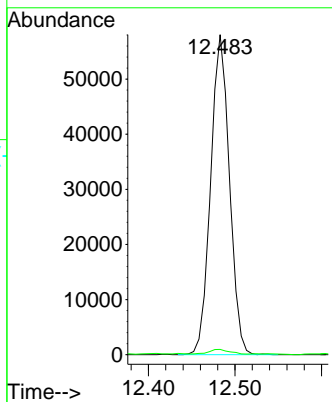
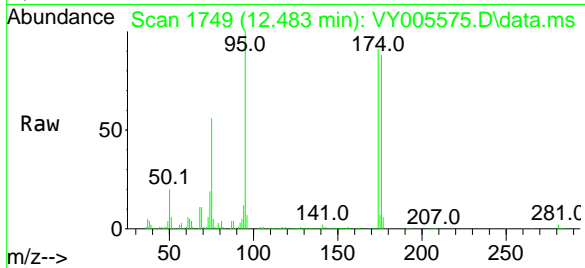




#76
 1,2,3-Trichloropropane
 Concen: 58.051 ug/l
 RT: 12.483 min Scan# 1749
 Delta R.T. -0.153 min
 Lab File: VY005575.D
 Acq: 06 Aug 2021 16:59

Instrument :
 MSVOA_Y
 ClientSampled :

Tgt Ion: 75 Resp: 87436
 Ion Ratio Lower Upper
 75 100
 77 1.6 0.0 0.0#



#81
 trans-1,4-Dichloro-2-butene
 Concen: 117.022 ug/l
 RT: 12.483 min Scan# 1749
 Delta R.T. 0.103 min
 Lab File: VY005575.D
 Acq: 06 Aug 2021 16:59

Tgt Ion: 75 Resp: 87436
 Ion Ratio Lower Upper
 75 100
 53 0.2 76.7 115.1#
 89 0.1 38.4 57.6#

