

Data Path : Z:\voasrv\HPCHEM1\MSVOA\_Y\Data\VY080621\  
 Data File : VY005565.D  
 Acq On : 06 Aug 2021 11:48  
 Operator : SY/MD  
 Sample : VY0806SBL01  
 Misc : 5.00G/5ML/MSVOA\_Y/SOIL  
 ALS Vial : 3 Sample Multiplier: 1

Instrument :  
 MSVOA\_Y  
 ClientSampleId :  
 VY0806SBL01

Integration Parameters: RTEINT.P

Integrator: RTE  
 Smoothing : ON Filtering: 5  
 Sampling : 1 Min Area: 3 % of largest Peak  
 Start Thrs: 0.2 Max Peaks: 100  
 Stop Thrs : 0 Peak Location: TOP

If leading or trailing edge < 100 prefer < Baseline drop else tangent >  
 Peak separation: 5

Method : Z:\voasrv\HPCHEM1\MSVOA\_Y\methods\82Y080221S.M  
 Title : SW846 8260

Signal : TIC: VY005565.D\data.ms

peak #	R.T. min	first scan	max scan	last scan	PK TY	peak height	corr. area	corr. % max.	% of total
1	2.058	35	39	46	rBV2	6528	14615	1.04%	0.182%
2	4.728	465	477	492	rBV2	29342	92902	6.60%	1.158%
3	5.759	636	646	657	rBV2	8581	27439	1.95%	0.342%
4	7.728	957	969	974	rBV	191403	453539	32.23%	5.653%
5	7.795	974	980	993	rVB	367027	846119	60.12%	10.546%
6	8.149	1027	1038	1049	rBV	194937	425490	30.23%	5.303%
7	8.697	1118	1128	1140	rBV	536509	1056829	75.09%	13.172%
8	9.746	1293	1300	1315	rVB2	15081	35043	2.49%	0.437%
9	10.185	1365	1372	1379	rBV	820222	1407353	100.00%	17.541%
10	10.581	1429	1437	1444	rBV2	12812	24722	1.76%	0.308%
11	11.496	1578	1587	1596	rBV	751614	1241119	88.19%	15.469%
12	12.483	1741	1749	1757	rBV2	634800	1004644	71.39%	12.522%
13	13.367	1886	1894	1897	rBV2	12794	20960	1.49%	0.261%
14	13.428	1897	1904	1911	rVB	799308	1212994	86.19%	15.119%
15	13.965	1986	1992	2001	rVB	38008	60601	4.31%	0.755%
16	14.672	2104	2108	2112	rBV	11672	17505	1.24%	0.218%
17	15.007	2157	2163	2168	rBV2	13868	23155	1.65%	0.289%
18	15.233	2195	2200	2206	rBV2	11202	19627	1.39%	0.245%
19	15.318	2210	2214	2221	rVB	9366	14530	1.03%	0.181%
20	15.422	2227	2231	2239	rVB5	12721	23943	1.70%	0.298%

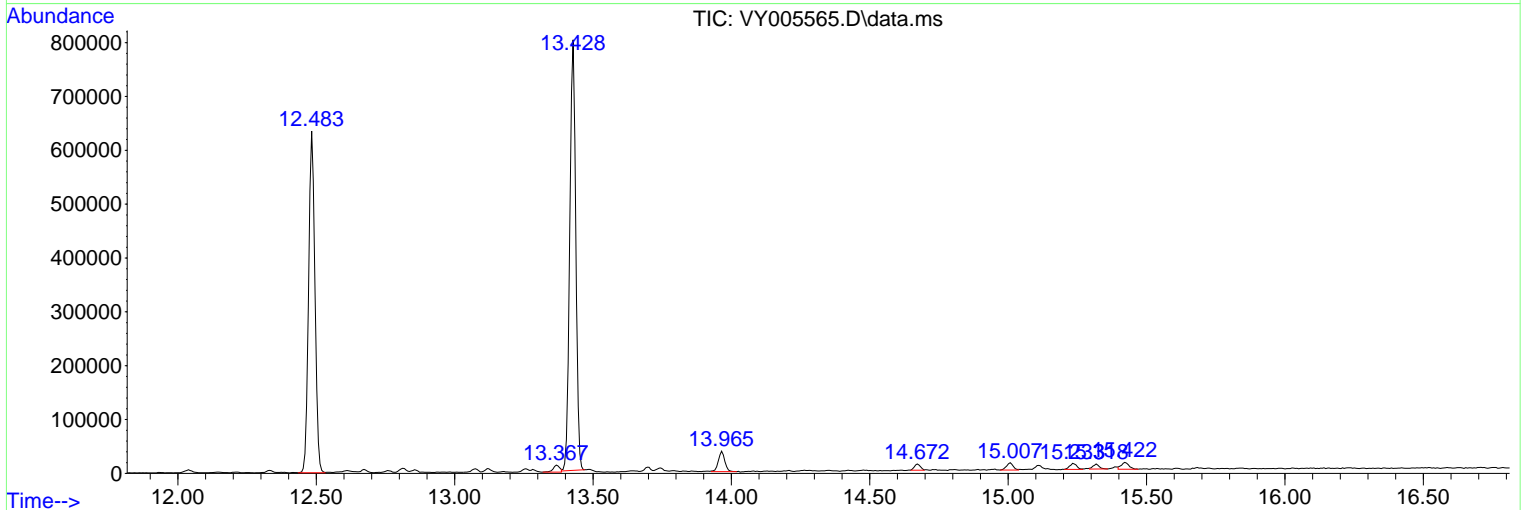
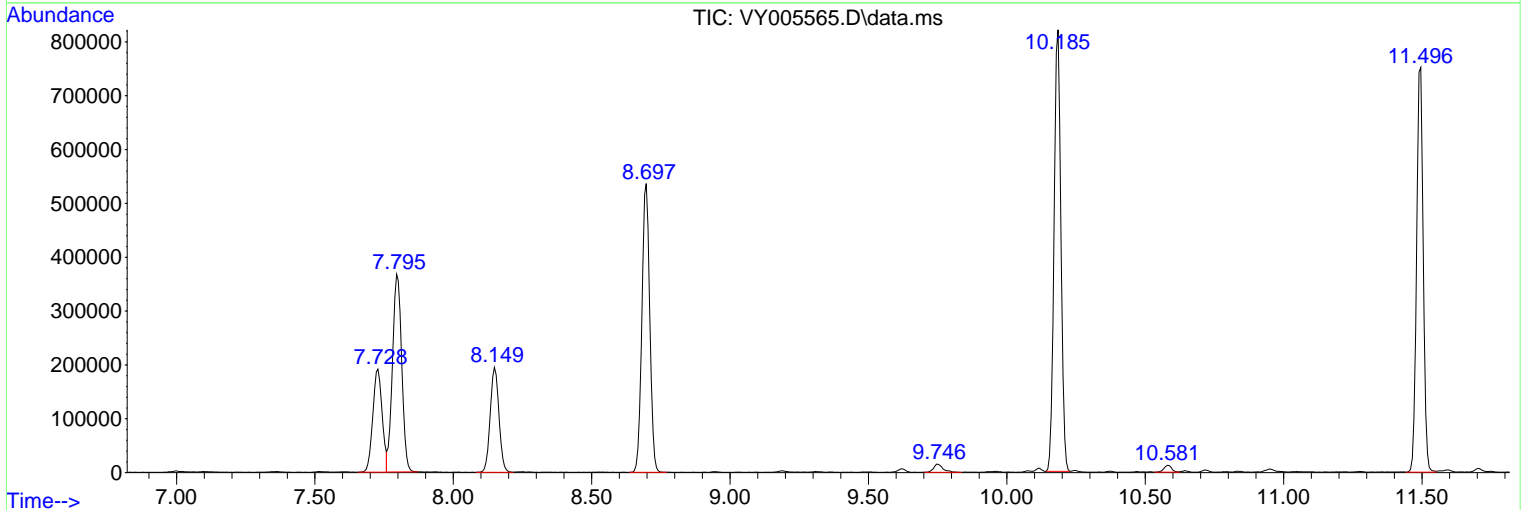
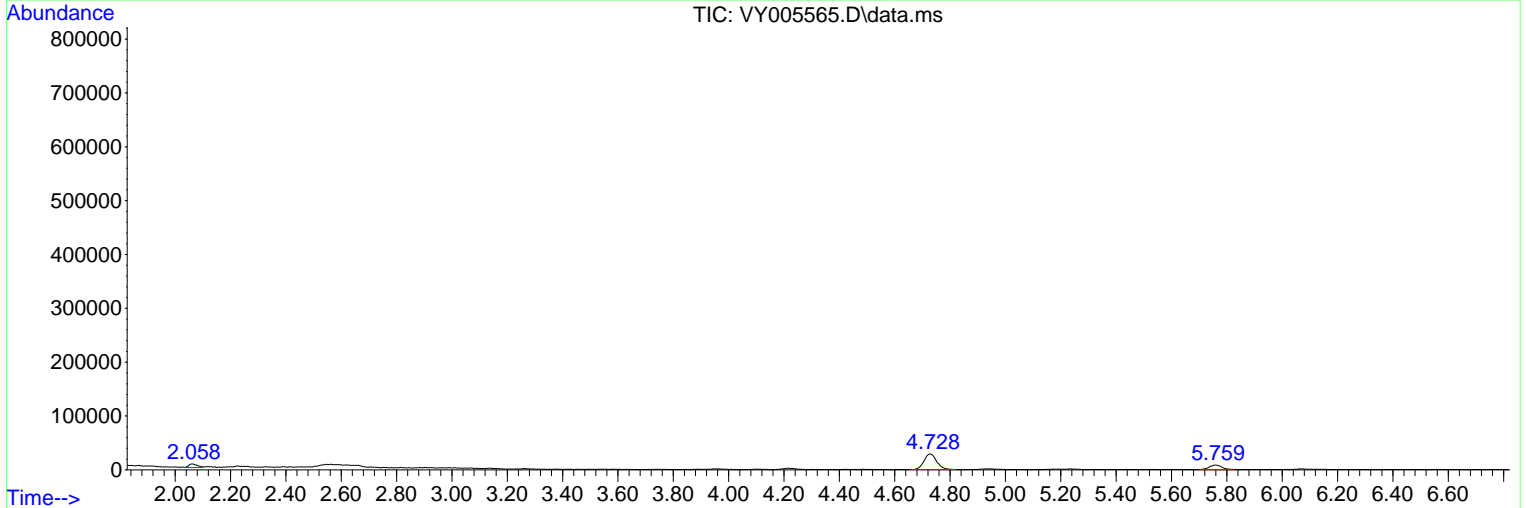
Sum of corrected areas: 8023129

Data Path : Z:\voasrv\HPCHEM1\MSVOA\_Y\Data\VY080621\  
 Data File : VY005565.D  
 Acq On : 06 Aug 2021 11:48  
 Operator : SY/MD  
 Sample : VY0806SBL01  
 Misc : 5.00G/5ML/MSVOA\_Y/SOIL  
 ALS Vial : 3 Sample Multiplier: 1

Instrument :  
 MSVOA\_Y  
 ClientSampleId :  
 VY0806SBL01

Quant Method : Z:\voasrv\HPCHEM1\MSVOA\_Y\methods\82Y080221S.M  
 Quant Title : SW846 8260

TIC Library : C:\Database\NIST20.L  
 TIC Integration Parameters: LSCINT.P



Library Search Compound Report

Data Path : Z:\voasrv\HPCHEM1\MSVOA\_Y\Data\VY080621\  
Data File : VY005565.D  
Acq On : 06 Aug 2021 11:48  
Operator : SY/MD  
Sample : VY0806SBL01  
Misc : 5.00G/5ML/MSVOA\_Y/SOIL  
ALS Vial : 3 Sample Multiplier: 1

Instrument :  
MSVOA\_Y  
ClientSampleId :  
VY0806SBL01

Quant Method : Z:\voasrv\HPCHEM1\MSVOA\_Y\methods\82Y080221S.M  
Quant Title : SW846 8260

TIC Library : C:\Database\NIST20.L  
TIC Integration Parameters: LSCINT.P

No Library Search Compounds Detected

\*\*\*\*\*

Data Path : Z:\voasrv\HPCHEM1\MSVOA\_Y\Data\VY080621\  
Data File : VY005565.D  
Acq On : 06 Aug 2021 11:48  
Operator : SY/MD  
Sample : VY0806SBL01  
Misc : 5.00G/5ML/MSVOA\_Y/SOIL  
ALS Vial : 3 Sample Multiplier: 1

Instrument :  
MSVOA\_Y  
ClientSampleId :  
VY0806SBL01

Quant Method : Z:\voasrv\HPCHEM1\MSVOA\_Y\methods\82Y080221S.M  
Quant Title : SW846 8260

TIC Library : C:\Database\NIST20.L  
TIC Integration Parameters: LSCINT.P

TIC Top Hit name	RT	EstConc	Units	Response	#	RT	Resp	Conc
------------------	----	---------	-------	----------	---	----	------	------

---