

Data Path : Z:\voasrv\HPCHEM1\MSVOA\_Y\Data\VY080823\  
 Data File : VY014982.D  
 Acq On : 08 Aug 2023 14:01  
 Operator : SY/MD  
 Sample : 03929-01  
 Misc : 5.05g/5.0mL/MSVOA\_Y/SOIL  
 ALS Vial : 12 Sample Multiplier: 1

Instrument :  
 MSVOA\_Y  
 ClientSampleId :  
 B-PP19

Integration Parameters: RTEINT.P  
 Integrator: RTE  
 Smoothing : ON  
 Sampling : 1  
 Start Thrs : 0.2  
 Stop Thrs : 0  
 Filtering: 5  
 Min Area: 3 % of largest Peak  
 Max Peaks: 100  
 Peak Location: TOP

If leading or trailing edge < 100 prefer < Baseline drop else tangent >  
 Peak separation: 5

Method : Z:\voasrv\HPCHEM1\MSVOA\_Y\methods\82Y080723S.M  
 Title : SW846 8260

Signal : TIC: VY014982.D\data.ms

peak #	R.T. min	first scan	max scan	last scan	PK TY	peak height	corr. area	corr. % max.	% of total
1	2.241	59	69	76	rBV2	29210	67454	4.74%	0.280%
2	2.333	79	84	89	rBV	23577	39096	2.75%	0.162%
3	3.241	226	233	247	rVB3	22445	61513	4.32%	0.255%
4	3.436	256	265	275	rVB	18338	43351	3.04%	0.180%
5	3.686	298	306	318	rVB	13726	36343	2.55%	0.151%
6	3.948	339	349	365	rBV2	12206	38263	2.69%	0.159%
7	4.710	462	474	488	rBV5	26910	115168	8.09%	0.477%
8	5.222	543	558	578	rBV3	30382	119294	8.38%	0.494%
9	5.734	633	642	657	rBV3	22698	72333	5.08%	0.300%
10	6.673	785	796	806	rBV4	16789	56408	3.96%	0.234%
11	6.783	806	814	825	rVB3	22808	67874	4.77%	0.281%
12	6.978	834	846	861	rBV2	86730	272348	19.13%	1.129%
13	7.521	926	935	948	rVB4	25351	75968	5.34%	0.315%
14	7.716	955	967	972	rBV	163148	403102	28.31%	1.671%
15	7.783	972	978	985	rVV	278983	652737	45.85%	2.706%
16	7.868	985	992	1004	rVB	136604	350468	24.62%	1.453%
17	7.996	1004	1013	1019	rBV2	54857	128851	9.05%	0.534%
18	8.155	1026	1039	1049	rVB3	415476	1170186	82.19%	4.850%
19	8.319	1049	1066	1076	rVV	434772	1301854	91.44%	5.396%
20	8.411	1076	1081	1092	rVB3	45557	104896	7.37%	0.435%
21	8.539	1092	1102	1112	rBV5	12045	33487	2.35%	0.139%
22	8.685	1117	1126	1137	rBV	433094	878148	61.68%	3.640%
23	8.923	1158	1165	1168	rBV4	14891	31393	2.21%	0.130%
24	8.996	1174	1177	1187	rVB	20011	38782	2.72%	0.161%
25	9.179	1203	1207	1212	rVB2	180028	328977	23.11%	1.364%
26	9.240	1212	1217	1224	rVB	150351	287043	20.16%	1.190%
27	9.319	1224	1230	1234	rBV	39221	80367	5.65%	0.333%
28	9.368	1234	1238	1243	rVB	33410	58004	4.07%	0.240%
29	9.459	1243	1253	1260	rVB3	66821	188800	13.26%	0.783%
30	9.612	1271	1278	1289	rVB	467384	898960	63.14%	3.726%
31	9.746	1289	1300	1307	rBV	574330	1262862	88.70%	5.235%
32	9.850	1313	1317	1324	rVB2	57629	116815	8.21%	0.484%
33	9.935	1324	1331	1336	rBV2	96893	243186	17.08%	1.008%
34	9.990	1336	1340	1347	rVB2	88704	170378	11.97%	0.706%
35	10.106	1353	1359	1364	rVB2	143299	269395	18.92%	1.117%
36	10.179	1364	1371	1380	rBV	757651	1423680	100.00%	5.901%

Data Path : Z:\voasrv\HPCHEM1\MSVOA\_Y\Data\VY080823\  
 Data File : VY014982.D  
 Acq On : 08 Aug 2023 14:01  
 Operator : SY/MD  
 Sample : 03929-01  
 Misc : 5.05g/5.0mL/MSVOA\_Y/SOIL  
 ALS Vial : 12 Sample Multiplier: 1

Instrument :  
 MSVOA\_Y  
 ClientSampleId :  
 B-PP19

Integration Parameters: RTEINT.P

Integrator: RTE  
 Smoothing : ON  
 Sampling : 1  
 Start Thrs: 0.2  
 Stop Thrs : 0

Filtering: 5  
 Min Area: 3 % of largest Peak  
 Max Peaks: 100  
 Peak Location: TOP

If leading or trailing edge < 100 prefer < Baseline drop else tangent >  
 Peak separation: 5

Method : Z:\voasrv\HPCHEM1\MSVOA\_Y\methods\82Y080723S.M  
 Title : SW846 8260

37	10.301	1385	1391	1394	rBV2	39912	67959	4.77%	0.282%
38	10.343	1394	1398	1401	rBV3	47957	92510	6.50%	0.383%
39	10.471	1409	1419	1423	rBV5	20947	48524	3.41%	0.201%
40	10.520	1423	1427	1431	rBV	41614	62454	4.39%	0.259%
41	10.605	1431	1441	1449	rBV5	153730	516867	36.30%	2.142%
42	10.709	1453	1458	1463	rVB	72243	127258	8.94%	0.527%
43	10.801	1463	1473	1478	rBV4	60828	139770	9.82%	0.579%
44	10.855	1478	1482	1485	rBV2	29377	57941	4.07%	0.240%
45	10.898	1485	1489	1493	rBV	74564	126479	8.88%	0.524%
46	11.002	1502	1506	1509	rBV2	38299	49957	3.51%	0.207%
47	11.087	1515	1520	1525	rVB4	70976	131455	9.23%	0.545%
48	11.142	1525	1529	1533	rBV2	45175	70496	4.95%	0.292%
49	11.203	1534	1539	1542	rBV3	49815	71423	5.02%	0.296%
50	11.246	1542	1546	1548	rBV2	51681	80246	5.64%	0.333%
51	11.374	1562	1567	1571	rBV2	75433	137711	9.67%	0.571%
52	11.489	1579	1586	1592	rBV	647911	1085580	76.25%	4.500%
53	11.587	1594	1602	1606	rBV3	99672	204798	14.39%	0.849%
54	11.697	1612	1620	1624	rBV	76369	212588	14.93%	0.881%
55	11.739	1624	1627	1631	rVB4	63060	96518	6.78%	0.400%
56	11.837	1638	1643	1647	rBV6	15627	36851	2.59%	0.153%
57	11.892	1647	1652	1655	rVV3	18013	31913	2.24%	0.132%
58	11.935	1655	1659	1663	rVV3	34492	54251	3.81%	0.225%
59	12.002	1663	1670	1677	rBV5	77010	200324	14.07%	0.830%
60	12.117	1687	1689	1694	rVB3	29340	39391	2.77%	0.163%
61	12.197	1698	1702	1706	rBV5	43127	71222	5.00%	0.295%
62	12.477	1740	1748	1758	rVV3	547347	1013280	71.17%	4.200%
63	12.562	1758	1762	1768	rVB5	40080	82143	5.77%	0.340%
64	12.630	1768	1773	1775	rBV3	38056	74317	5.22%	0.308%
65	12.666	1776	1779	1784	rVB	62710	92993	6.53%	0.385%
66	12.806	1798	1802	1813	rVB8	43696	114866	8.07%	0.476%
67	12.971	1821	1829	1832	rBV4	27400	71604	5.03%	0.297%
68	13.117	1848	1853	1858	rVB	53350	82688	5.81%	0.343%
69	13.172	1858	1862	1867	rVB4	31201	54712	3.84%	0.227%
70	13.245	1867	1874	1878	rBV2	74747	185334	13.02%	0.768%
71	13.282	1878	1880	1884	rVB2	29642	33504	2.35%	0.139%
72	13.422	1897	1903	1909	rVV	534644	824169	57.89%	3.416%
73	13.477	1909	1912	1917	rVB2	26741	51276	3.60%	0.213%
74	13.593	1926	1931	1933	rBV	187983	276236	19.40%	1.145%
75	13.623	1933	1936	1941	rVV	242154	377059	26.48%	1.563%
76	13.672	1941	1944	1952	rVB2	67995	137888	9.69%	0.572%

Data Path : Z:\voasrv\HPCHEM1\MSVOA\_Y\Data\VY080823\  
 Data File : VY014982.D  
 Acq On : 08 Aug 2023 14:01  
 Operator : SY/MD  
 Sample : 03929-01  
 Misc : 5.05g/5.0mL/MSVOA\_Y/SOIL  
 ALS Vial : 12 Sample Multiplier: 1

Instrument :  
 MSVOA\_Y  
 ClientSampleId :  
 B-PP19

Integration Parameters: RTEINT.P

Integrator: RTE  
 Smoothing : ON Filtering: 5  
 Sampling : 1 Min Area: 3 % of largest Peak  
 Start Thrs: 0.2 Max Peaks: 100  
 Stop Thrs : 0 Peak Location: TOP

If leading or trailing edge < 100 prefer < Baseline drop else tangent >  
 Peak separation: 5

Method : Z:\voasrv\HPCHEM1\MSVOA\_Y\methods\82Y080723S.M  
 Title : SW846 8260

77	13.751	1952	1957	1965	rBV2	87718	144395	10.14%	0.599%
78	13.898	1975	1981	1987	rVB2	68361	119176	8.37%	0.494%
79	13.971	1987	1993	1998	rBV	506721	743336	52.21%	3.081%
80	14.026	1998	2002	2005	rVV	47258	67395	4.73%	0.279%
81	14.080	2005	2011	2016	rVB2	364911	580592	40.78%	2.407%
82	14.154	2016	2023	2028	rVB5	47995	94615	6.65%	0.392%
83	14.294	2036	2046	2052	rVB	385417	632569	44.43%	2.622%
84	14.379	2055	2060	2063	rBV2	76008	120174	8.44%	0.498%
85	14.513	2079	2082	2086	rVB	32012	47914	3.37%	0.199%
86	14.562	2086	2090	2095	rBV2	151344	240752	16.91%	0.998%
87	14.611	2095	2098	2103	rVB2	61881	87966	6.18%	0.365%
88	14.684	2103	2110	2115	rBV2	439992	740333	52.00%	3.069%
89	14.739	2115	2119	2125	rVV2	77743	133426	9.37%	0.553%
90	14.940	2143	2152	2156	rVV3	196716	397038	27.89%	1.646%
91	14.977	2156	2158	2164	rVV2	63648	115066	8.08%	0.477%
92	15.050	2164	2170	2177	rVB2	181632	381662	26.81%	1.582%
93	15.202	2190	2195	2198	rBV5	17263	35507	2.49%	0.147%
94	15.318	2204	2214	2216	rBV	55079	112234	7.88%	0.465%
95	15.391	2222	2226	2239	rVB	45958	104699	7.35%	0.434%
96	15.525	2242	2248	2254	rBV	65930	118633	8.33%	0.492%
97	15.690	2264	2275	2285	rBV4	36289	113911	8.00%	0.472%
98	15.812	2290	2295	2300	rVV2	41026	71268	5.01%	0.295%
99	15.885	2301	2307	2313	rVB4	26008	58592	4.12%	0.243%
100	16.489	2397	2406	2417	rBV	37822	90020	6.32%	0.373%

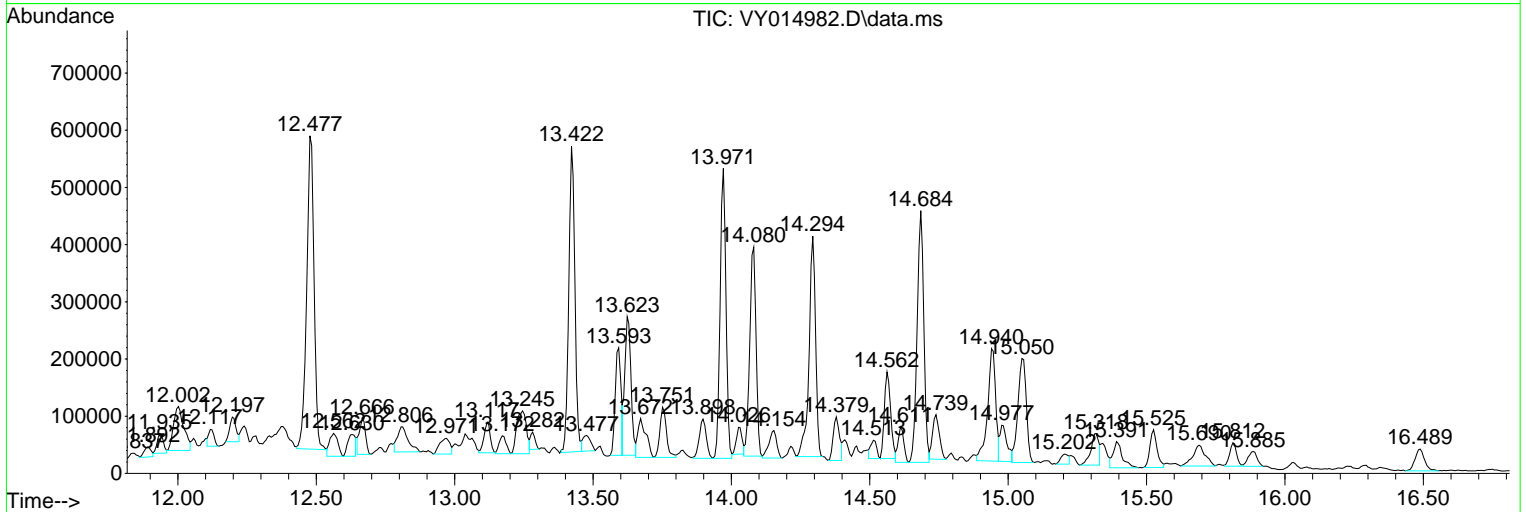
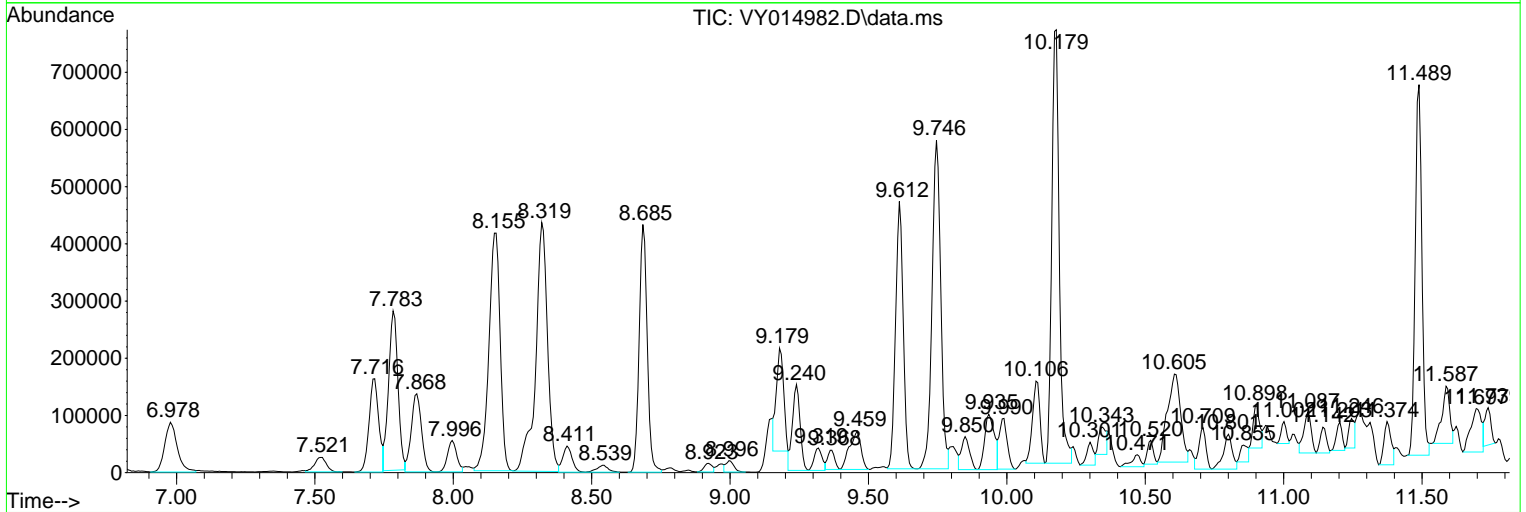
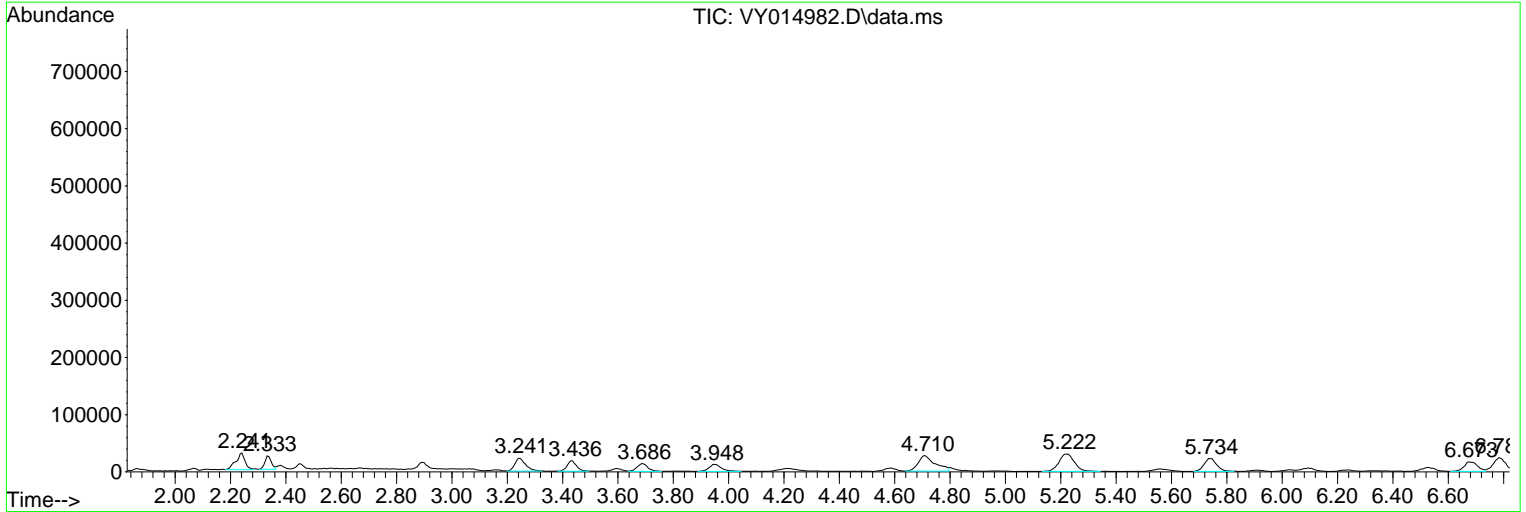
Sum of corrected areas: 24125612

Data Path : Z:\voasrv\HPCHEM1\MSVOA\_Y\Data\VY080823\  
 Data File : VY014982.D  
 Acq On : 08 Aug 2023 14:01  
 Operator : SY/MD  
 Sample : 03929-01  
 Misc : 5.05g/5.0mL/MSVOA\_Y/SOIL  
 ALS Vial : 12 Sample Multiplier: 1

Instrument :  
 MSVOA\_Y  
 ClientSampleId :  
 B-PP19

Quant Method : Z:\voasrv\HPCHEM1\MSVOA\_Y\methods\82Y080723S.M  
 Quant Title : SW846 8260

TIC Library : C:\Database\NIST20.L  
 TIC Integration Parameters: LSCINT.P



Data Path : Z:\voasrv\HPCHEM1\MSVOA\_Y\Data\VY080823\  
 Data File : VY014982.D  
 Acq On : 08 Aug 2023 14:01  
 Operator : SY/MD  
 Sample : 03929-01  
 Misc : 5.05g/5.0mL/MSVOA\_Y/SOIL  
 ALS Vial : 12 Sample Multiplier: 3

Instrument :  
 MSVOA\_Y  
 ClientSampleId :  
 B-PP19

Quant Method : Z:\voasrv\HPCHEM1\MSVOA\_Y\methods\82Y080723S.M  
 Quant Title : SW846 8260

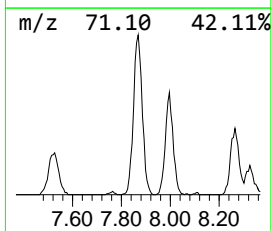
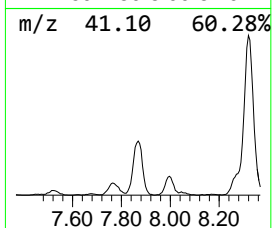
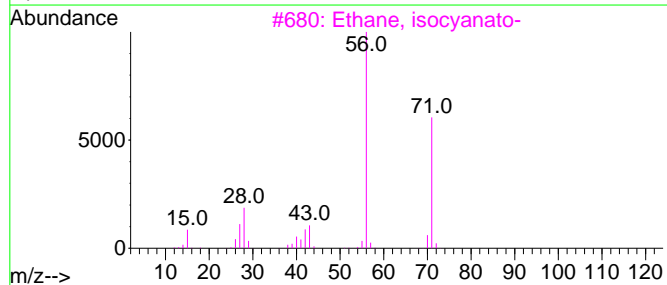
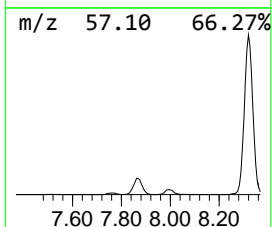
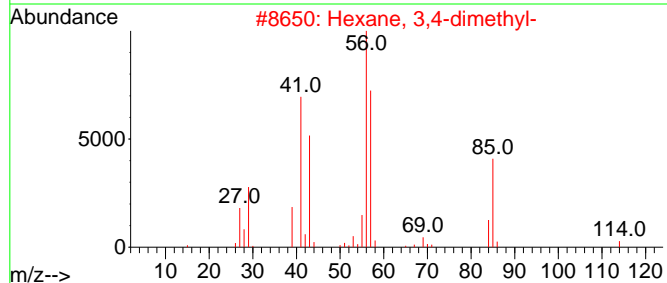
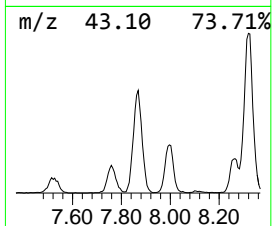
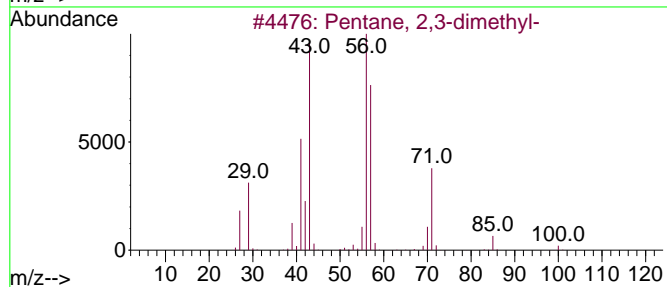
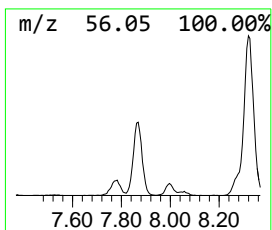
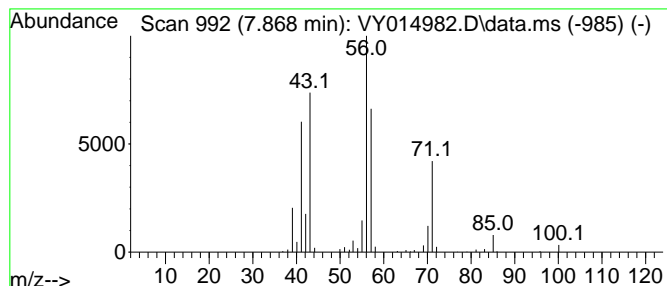
TIC Library : C:\Database\NIST20.L  
 TIC Integration Parameters: LSCINT.P

\*\*\*\*\*  
 Peak Number 1 Pentane, 2,3-dimethyl- Concentration Rank 8

R.T.	EstConc	Area	Relative to ISTD	R.T.
7.868	26.85 ug/l	350468	Pentafluorobenzene	7.783

Hit#	of 5	Tentative ID	MW	MolForm	CAS#	Qual
1		Pentane, 2,3-dimethyl-	100	C7H16	000565-59-3	91
2		Hexane, 3,4-dimethyl-	114	C8H18	000583-48-2	47
3		Ethane, isocyanato-	71	C3H5NO	000109-90-0	45
4		Hexane, 2,2,4-trimethyl-	128	C9H20	016747-26-5	45
5		Oxirane, (1-methylethyl)-	86	C5H10O	001438-14-8	43



Data Path : Z:\voasrv\HPCHEM1\MSVOA\_Y\Data\VY080823\  
 Data File : VY014982.D  
 Acq On : 08 Aug 2023 14:01  
 Operator : SY/MD  
 Sample : 03929-01  
 Misc : 5.05g/5.0mL/MSVOA\_Y/SOIL  
 ALS Vial : 12 Sample Multiplier: 1

Instrument :  
 MSVOA\_Y  
 ClientSampleId :  
 B-PP19

Quant Method : Z:\voasrv\HPCHEM1\MSVOA\_Y\methods\82Y080723S.M  
 Quant Title : SW846 8260

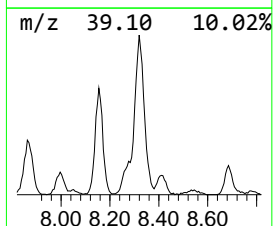
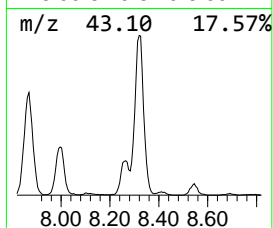
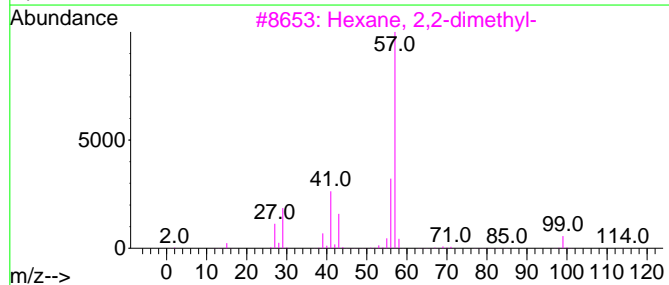
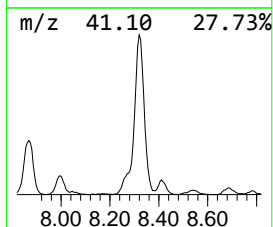
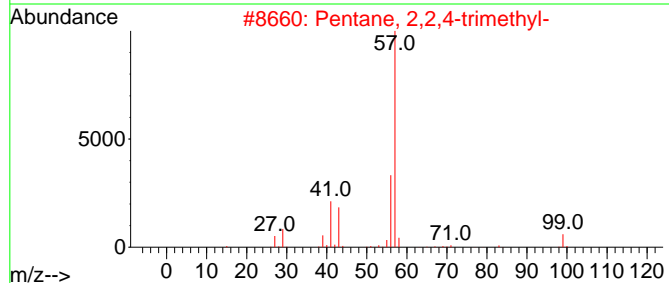
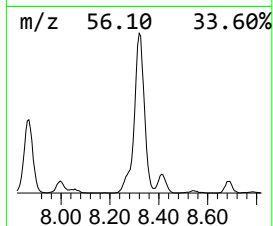
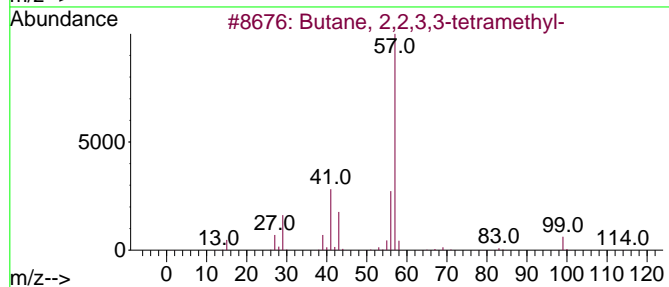
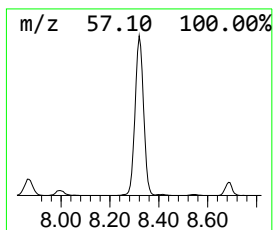
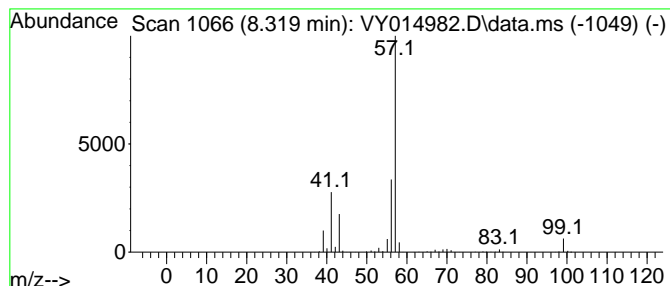
TIC Library : C:\Database\NIST20.L  
 TIC Integration Parameters: LSCINT.P

\*\*\*\*\*  
 Peak Number 2 Butane, 2,2,3,3-tetramethyl- Concentration Rank 1

R.T.	EstConc	Area	Relative to ISTD	R.T.
8.319	74.13 ug/l	1301850	1,4-Difluorobenzene	8.685

Hit#	of	Tentative ID	MW	MolForm	CAS#	Qual
1	5	Butane, 2,2,3,3-tetramethyl-	114	C8H18	000594-82-1	72
2		Pentane, 2,2,4-trimethyl-	114	C8H18	000540-84-1	72
3		Hexane, 2,2-dimethyl-	114	C8H18	000590-73-8	64
4		Pentane, 2,2,4,4-tetramethyl-	128	C9H20	001070-87-7	59
5		Hexane, 2,2,4-trimethyl-	128	C9H20	016747-26-5	59



Data Path : Z:\voasrv\HPCHEM1\MSVOA\_Y\Data\VY080823\  
 Data File : VY014982.D  
 Acq On : 08 Aug 2023 14:01  
 Operator : SY/MD  
 Sample : 03929-01  
 Misc : 5.05g/5.0mL/MSVOA\_Y/SOIL  
 ALS Vial : 12 Sample Multiplier: 1

Instrument :  
 MSVOA\_Y  
 ClientSampleId :  
 B-PP19

Quant Method : Z:\voasrv\HPCHEM1\MSVOA\_Y\methods\82Y080723S.M  
 Quant Title : SW846 8260

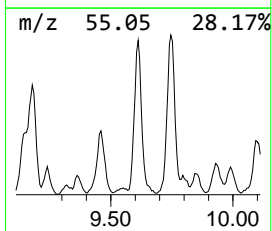
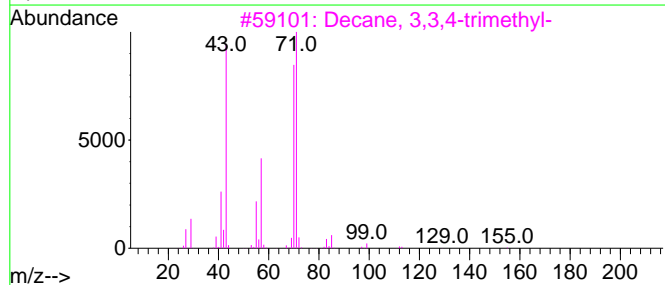
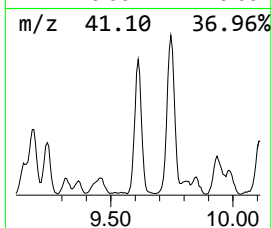
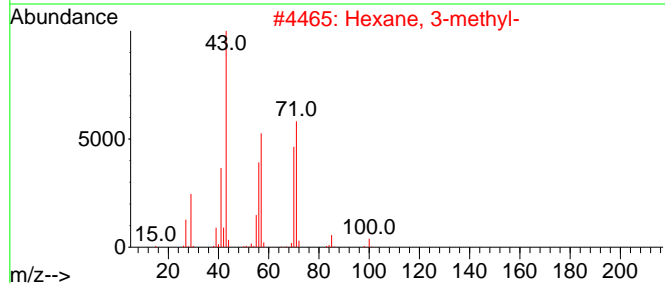
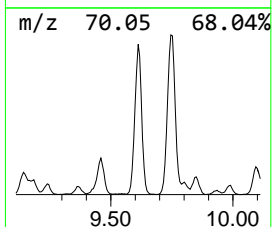
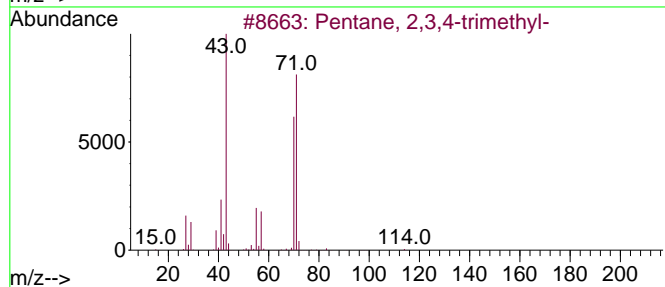
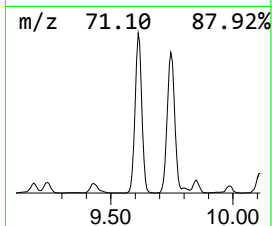
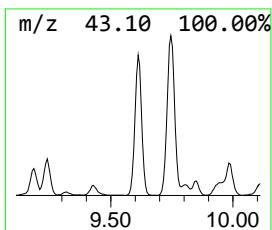
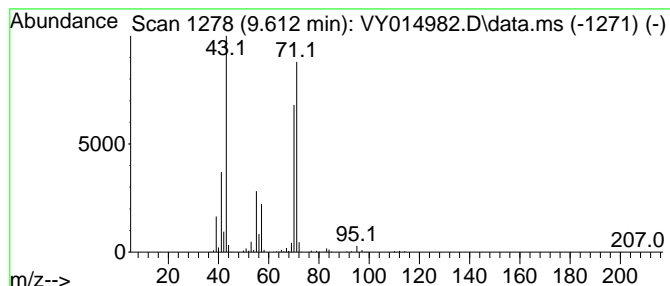
TIC Library : C:\Database\NIST20.L  
 TIC Integration Parameters: LSCINT.P

\*\*\*\*\*  
 Peak Number 3 Pentane, 2,3,4-trimethyl- Concentration Rank 3

R.T.	EstConc	Area	Relative to ISTD	R.T.
9.612	51.19 ug/l	898960	1,4-Difluorobenzene	8.685

Hit#	of	5	Tentative ID	MW	MolForm	CAS#	Qual
1			Pentane, 2,3,4-trimethyl-	114	C8H18	000565-75-3	90
2			Hexane, 3-methyl-	100	C7H16	000589-34-4	78
3			Decane, 3,3,4-trimethyl-	184	C13H28	049622-18-6	78
4			Pentane, 3-ethyl-	100	C7H16	000617-78-7	78
5			Heptane, 4-methyl-	114	C8H18	000589-53-7	74



Data Path : Z:\voasrv\HPCHEM1\MSVOA\_Y\Data\VY080823\  
 Data File : VY014982.D  
 Acq On : 08 Aug 2023 14:01  
 Operator : SY/MD  
 Sample : 03929-01  
 Misc : 5.05g/5.0mL/MSVOA\_Y/SOIL  
 ALS Vial : 12 Sample Multiplier: 1

Instrument :  
 MSVOA\_Y  
 ClientSampleId :  
 B-PP19

Quant Method : Z:\voasrv\HPCHEM1\MSVOA\_Y\methods\82Y080723S.M  
 Quant Title : SW846 8260

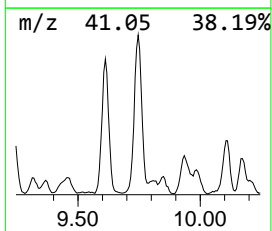
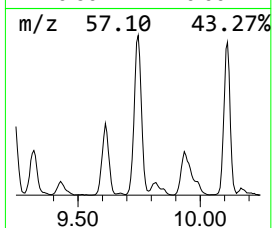
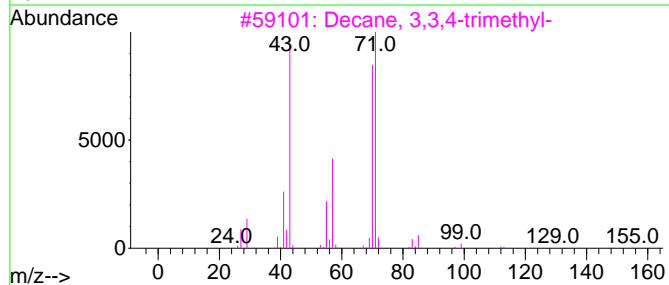
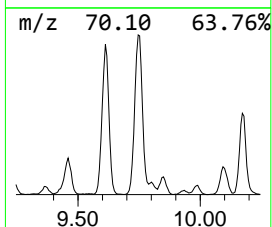
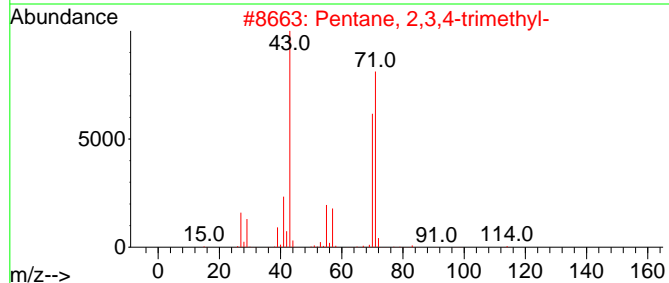
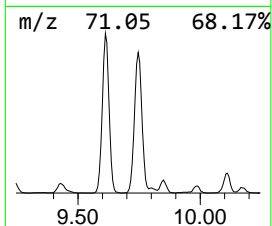
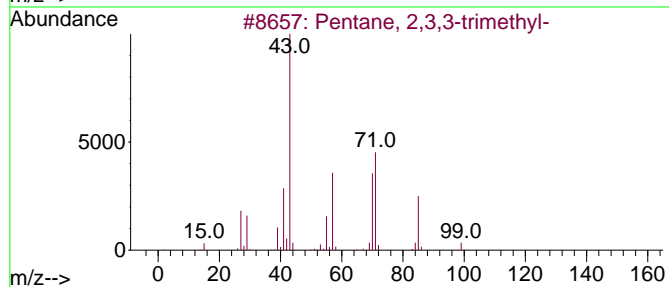
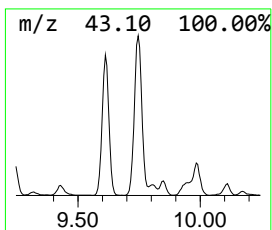
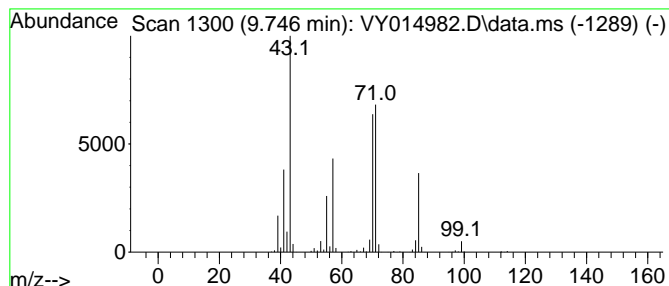
TIC Library : C:\Database\NIST20.L  
 TIC Integration Parameters: LSCINT.P

\*\*\*\*\*  
 Peak Number 4 Pentane, 2,3,3-trimethyl- Concentration Rank 2

R.T.	EstConc	Area	Relative to ISTD	R.T.
9.746	71.90 ug/l	1262860	1,4-Difluorobenzene	8.685

Hit#	of	5	Tentative ID	MW	MolForm	CAS#	Qual
1			Pentane, 2,3,3-trimethyl-	114	C8H18	000560-21-4	90
2			Pentane, 2,3,4-trimethyl-	114	C8H18	000565-75-3	72
3			Decane, 3,3,4-trimethyl-	184	C13H28	049622-18-6	64
4			Heptane, 3,3,4-trimethyl-	142	C10H22	020278-87-9	64
5			Pentane, 3-ethyl-	100	C7H16	000617-78-7	59





Data Path : Z:\voasrv\HPCHEM1\MSVOA\_Y\Data\VY080823\  
 Data File : VY014982.D  
 Acq On : 08 Aug 2023 14:01  
 Operator : SY/MD  
 Sample : 03929-01  
 Misc : 5.05g/5.0mL/MSVOA\_Y/SOIL  
 ALS Vial : 12 Sample Multiplier: 1

Instrument :  
 MSVOA\_Y  
 ClientSampleId :  
 B-PP19

Quant Method : Z:\voasrv\HPCHEM1\MSVOA\_Y\methods\82Y080723S.M  
 Quant Title : SW846 8260

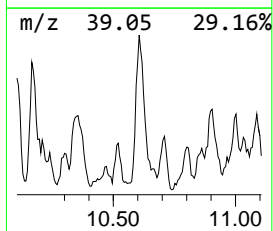
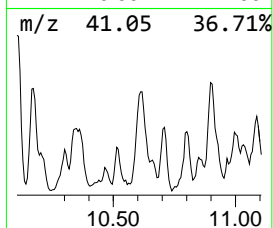
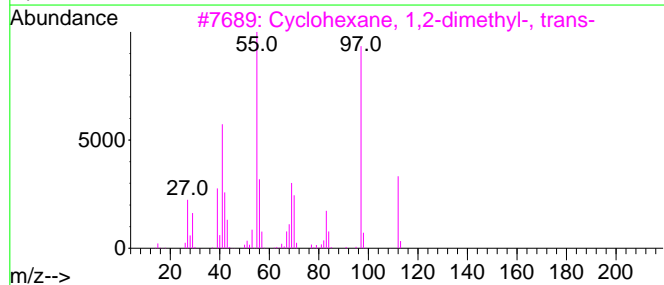
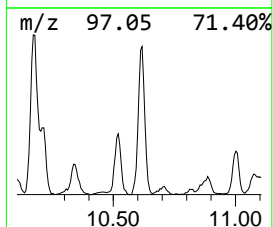
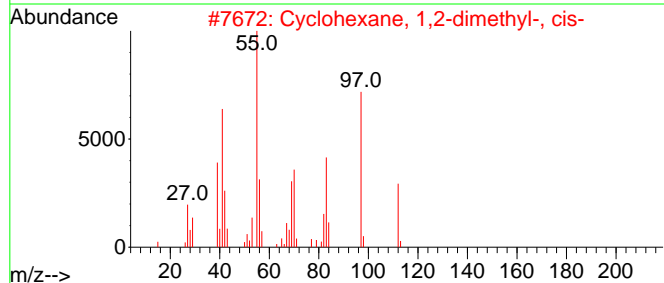
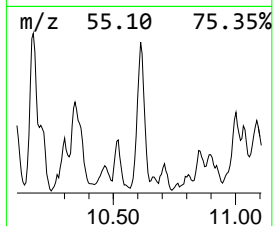
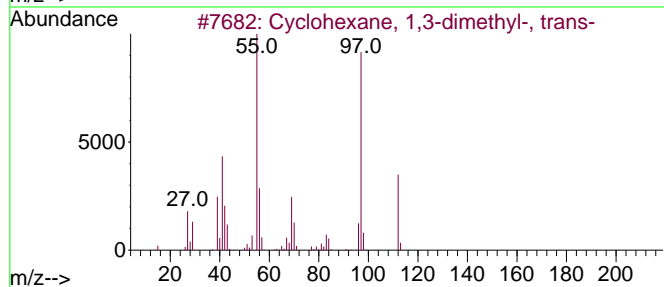
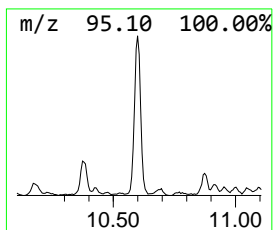
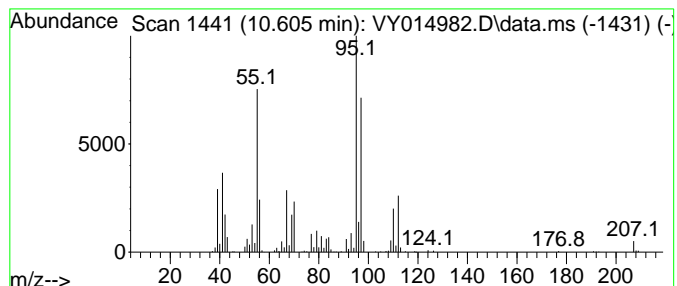
TIC Library : C:\Database\NIST20.L  
 TIC Integration Parameters: LSCINT.P

\*\*\*\*\*  
 Peak Number 5 Cyclohexane, 1,3-dimethyl-,... Concentration Rank 10

R.T.	EstConc	Area	Relative to ISTD	R.T.
10.605	23.81 ug/l	516867	Chlorobenzene-d5	11.490

Hit#	of 5	Tentative ID	MW	MolForm	CAS#	Qual
1		Cyclohexane, 1,3-dimethyl-, trans-	112	C8H16	002207-03-6	83
2		Cyclohexane, 1,2-dimethyl-, cis-	112	C8H16	002207-01-4	50
3		Cyclohexane, 1,2-dimethyl-, trans-	112	C8H16	006876-23-9	46
4		Cyclohexane, 1,4-dimethyl-	112	C8H16	000589-90-2	46
5		Cyclohexane, 1,2-dimethyl- (cis/...	112	C8H16	000583-57-3	45



Data Path : Z:\voasrv\HPCHEM1\MSVOA\_Y\Data\VY080823\  
 Data File : VY014982.D  
 Acq On : 08 Aug 2023 14:01  
 Operator : SY/MD  
 Sample : 03929-01  
 Misc : 5.05g/5.0mL/MSVOA\_Y/SOIL  
 ALS Vial : 12 Sample Multiplier: 1

Instrument :  
 MSVOA\_Y  
 ClientSampleId :  
 B-PP19

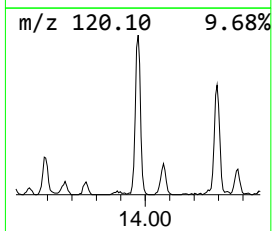
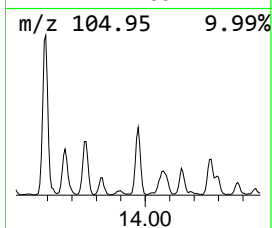
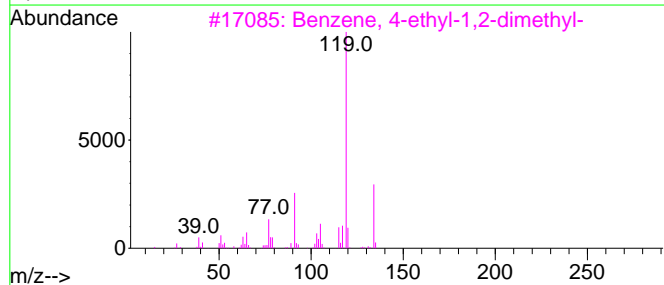
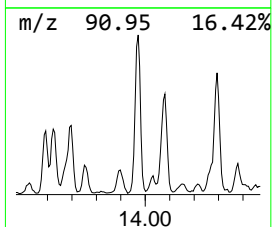
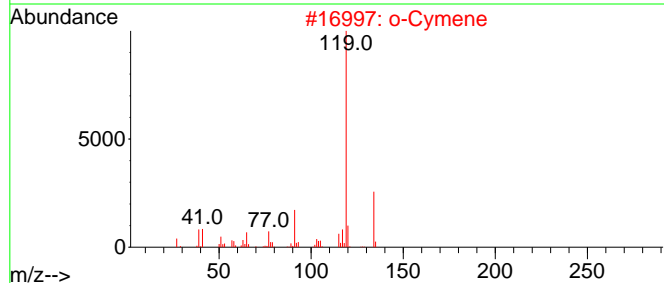
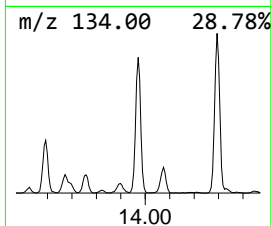
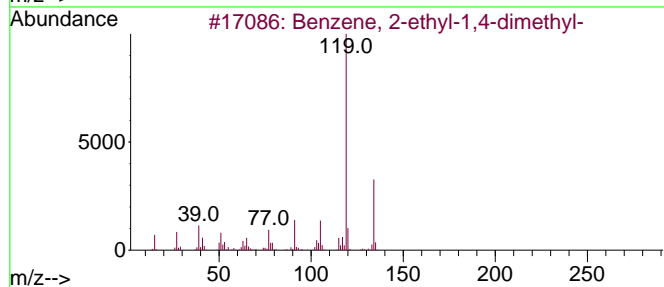
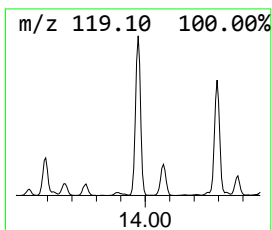
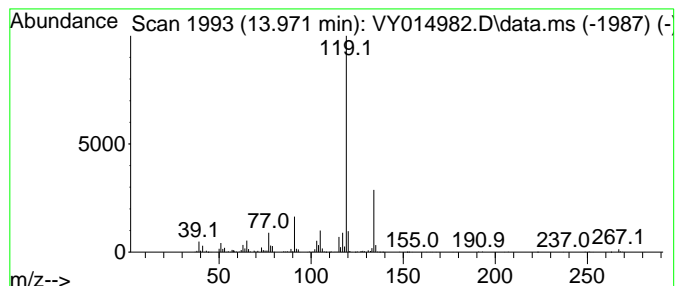
Quant Method : Z:\voasrv\HPCHEM1\MSVOA\_Y\methods\82Y080723S.M  
 Quant Title : SW846 8260

TIC Library : C:\Database\NIST20.L  
 TIC Integration Parameters: LSCINT.P

\*\*\*\*\*  
 Peak Number 6 Benzene, 2-ethyl-1,4-dimethyl- Concentration Rank 4

R.T.	EstConc	Area	Relative to ISTD	R.T.
13.971	45.10 ug/l	743336	1,4-Dichlorobenzene-d4	13.422

Hit#	of	5	Tentative ID	MW	MolForm	CAS#	Qual
1			Benzene, 2-ethyl-1,4-dimethyl-	134	C10H14	001758-88-9	95
2			o-Cymene	134	C10H14	000527-84-4	95
3			Benzene, 4-ethyl-1,2-dimethyl-	134	C10H14	000934-80-5	95
4			Benzene, 1-ethyl-2,3-dimethyl-	134	C10H14	000933-98-2	95
5			Benzene, 2-ethyl-1,3-dimethyl-	134	C10H14	002870-04-4	94



Data Path : Z:\voasrv\HPCHEM1\MSVOA\_Y\Data\VY080823\  
 Data File : VY014982.D  
 Acq On : 08 Aug 2023 14:01  
 Operator : SY/MD  
 Sample : 03929-01  
 Misc : 5.05g/5.0mL/MSVOA\_Y/SOIL  
 ALS Vial : 12 Sample Multiplier: 1

Instrument :  
 MSVOA\_Y  
 ClientSampleId :  
 B-PP19

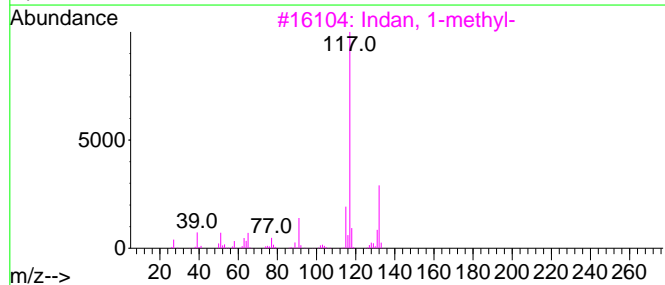
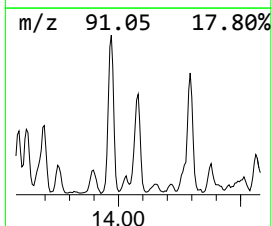
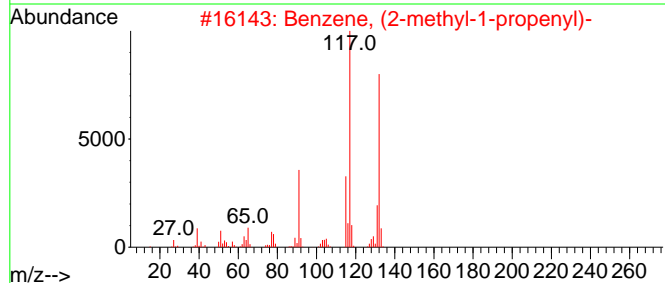
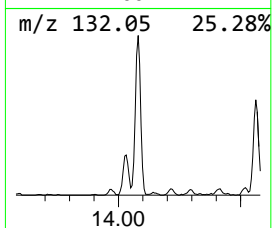
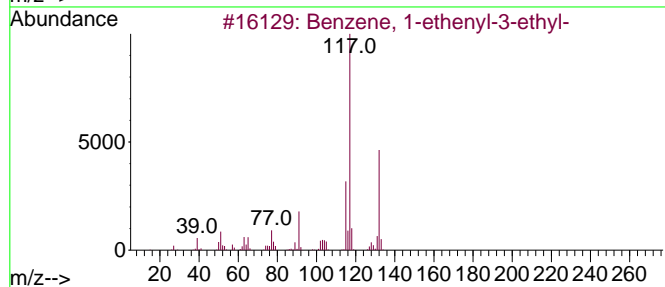
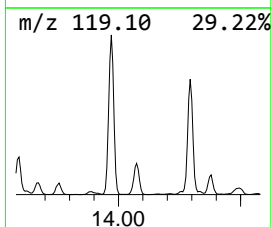
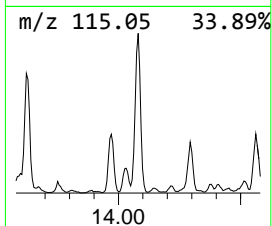
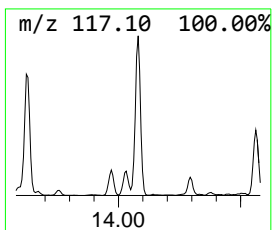
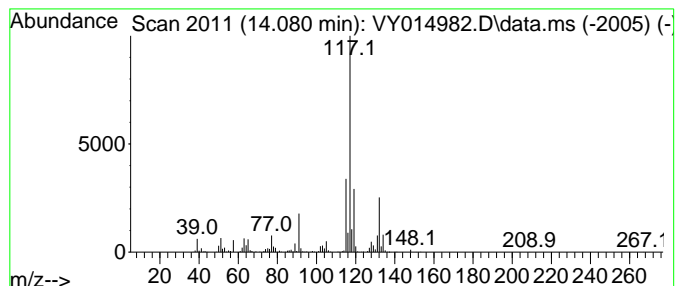
Quant Method : Z:\voasrv\HPCHEM1\MSVOA\_Y\methods\82Y080723S.M  
 Quant Title : SW846 8260

TIC Library : C:\Database\NIST20.L  
 TIC Integration Parameters: LSCINT.P

\*\*\*\*\*  
 Peak Number 7 Benzene, 1-ethenyl-3-ethyl- Concentration Rank 7

R.T.	EstConc	Area	Relative to ISTD	R.T.
14.081	35.22 ug/l	580592	1,4-Dichlorobenzene-d4	13.422

Hit#	of	5	Tentative ID	MW	MolForm	CAS#	Qual
1			Benzene, 1-ethenyl-3-ethyl-	132	C10H12	007525-62-4	81
2			Benzene, (2-methyl-1-propenyl)-	132	C10H12	000768-49-0	81
3			Indan, 1-methyl-	132	C10H12	000767-58-8	81
4			1-Methyl-2-phenylcyclopropane	132	C10H12	003145-76-4	76
5			1H-Indene, 2,3-dihydro-4-methyl-	132	C10H12	000824-22-6	72



Data Path : Z:\voasrv\HPCHEM1\MSVOA\_Y\Data\VY080823\  
 Data File : VY014982.D  
 Acq On : 08 Aug 2023 14:01  
 Operator : SY/MD  
 Sample : 03929-01  
 Misc : 5.05g/5.0mL/MSVOA\_Y/SOIL  
 ALS Vial : 12 Sample Multiplier: 1

Instrument :  
 MSVOA\_Y  
 ClientSampleId :  
 B-PP19

Quant Method : Z:\voasrv\HPCHEM1\MSVOA\_Y\methods\82Y080723S.M  
 Quant Title : SW846 8260

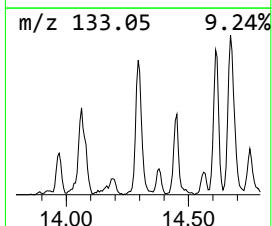
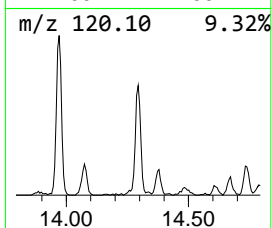
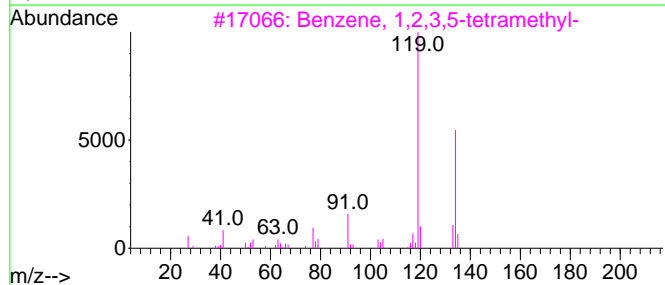
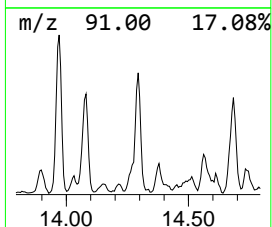
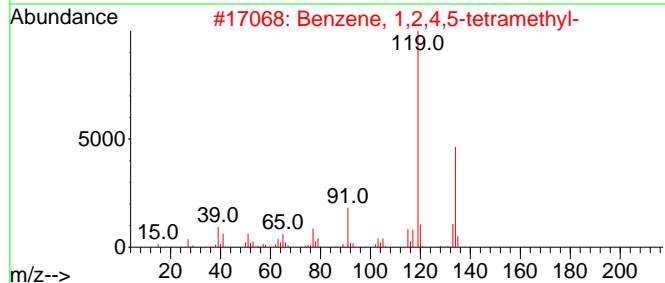
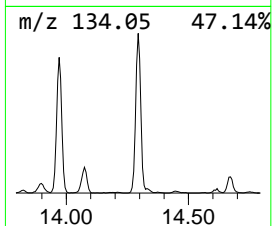
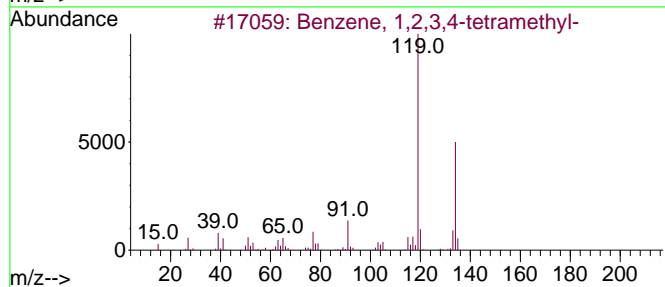
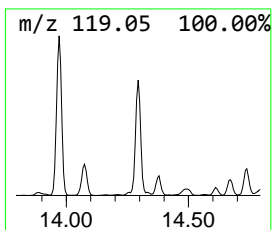
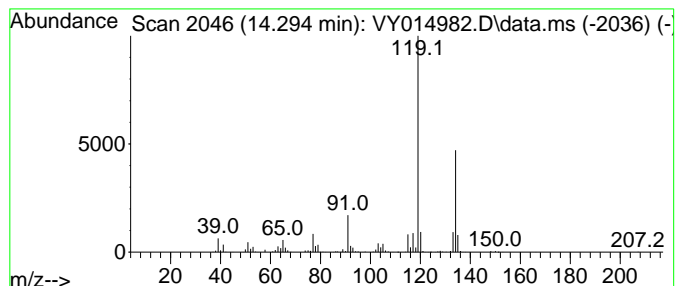
TIC Library : C:\Database\NIST20.L  
 TIC Integration Parameters: LSCINT.P

\*\*\*\*\*  
 Peak Number 8 Benzene, 1,2,3,4-tetramethyl- Concentration Rank 6

R.T.	EstConc	Area	Relative to ISTD	R.T.
14.294	38.38 ug/l	632569	1,4-Dichlorobenzene-d4	13.422

Hit#	of 5	Tentative ID	MW	MolForm	CAS#	Qual
1		Benzene, 1,2,3,4-tetramethyl-	134	C10H14	000488-23-3	97
2		Benzene, 1,2,4,5-tetramethyl-	134	C10H14	000095-93-2	96
3		Benzene, 1,2,3,5-tetramethyl-	134	C10H14	000527-53-7	96
4		o-Cymene	134	C10H14	000527-84-4	95
5		Benzene, 1-ethyl-2,4-dimethyl-	134	C10H14	000874-41-9	93



Data Path : Z:\voasrv\HPCHEM1\MSVOA\_Y\Data\VY080823\  
 Data File : VY014982.D  
 Acq On : 08 Aug 2023 14:01  
 Operator : SY/MD  
 Sample : 03929-01  
 Misc : 5.05g/5.0mL/MSVOA\_Y/SOIL  
 ALS Vial : 12 Sample Multiplier: 1

Instrument :  
 MSVOA\_Y  
 ClientSampleId :  
 B-PP19

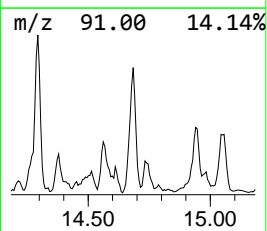
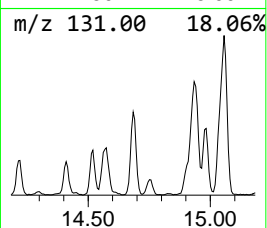
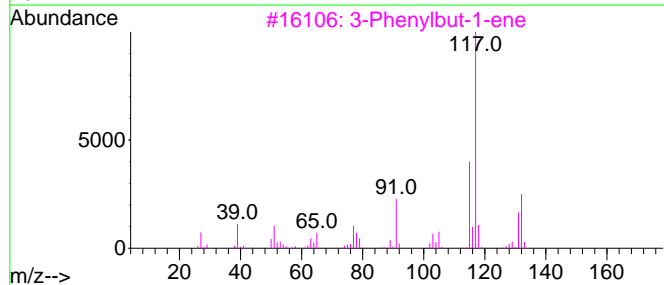
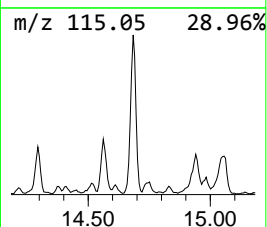
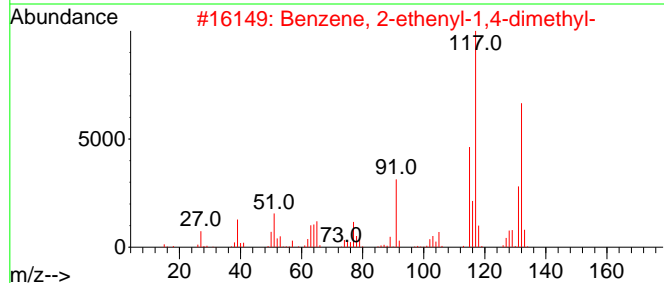
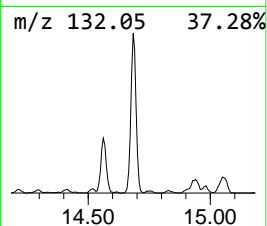
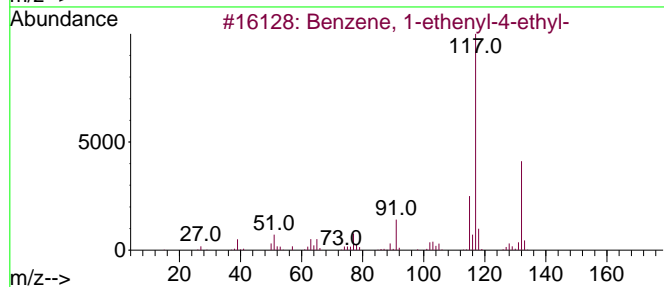
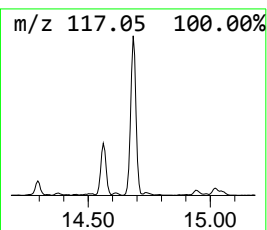
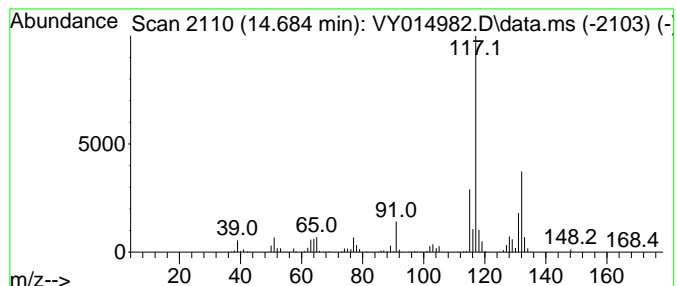
Quant Method : Z:\voasrv\HPCHEM1\MSVOA\_Y\methods\82Y080723S.M  
 Quant Title : SW846 8260

TIC Library : C:\Database\NIST20.L  
 TIC Integration Parameters: LSCINT.P

\*\*\*\*\*  
 Peak Number 9 Benzene, 1-ethenyl-4-ethyl- Concentration Rank 5

R.T.	EstConc	Area	Relative to ISTD	R.T.
14.684	44.91 ug/l	740333	1,4-Dichlorobenzene-d4	13.422

Hit#	of 5	Tentative ID	MW	MolForm	CAS#	Qual
1		Benzene, 1-ethenyl-4-ethyl-	132	C10H12	003454-07-7	94
2		Benzene, 2-ethenyl-1,4-dimethyl-	132	C10H12	002039-89-6	92
3		3-Phenylbut-1-ene	132	C10H12	000934-10-1	91
4		Benzene, (1-methyl-1-propenyl)-,...	132	C10H12	000768-00-3	91
5		Benzene, 2-butenyl-	132	C10H12	001560-06-1	90



Data Path : Z:\voasrv\HPCHEM1\MSVOA\_Y\Data\VY080823\  
 Data File : VY014982.D  
 Acq On : 08 Aug 2023 14:01  
 Operator : SY/MD  
 Sample : 03929-01  
 Misc : 5.05g/5.0mL/MSVOA\_Y/SOIL  
 ALS Vial : 12 Sample Multiplier: 1

Instrument :  
 MSVOA\_Y  
 ClientSampleId :  
 B-PP19

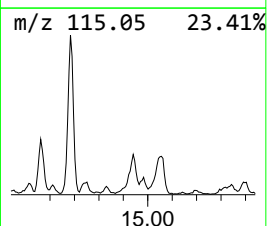
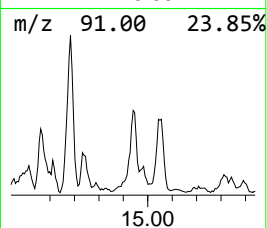
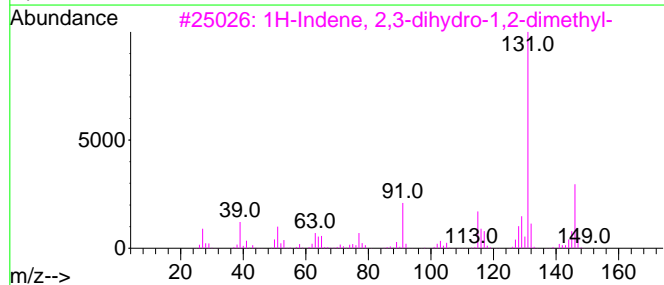
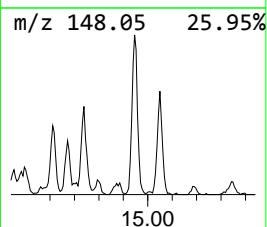
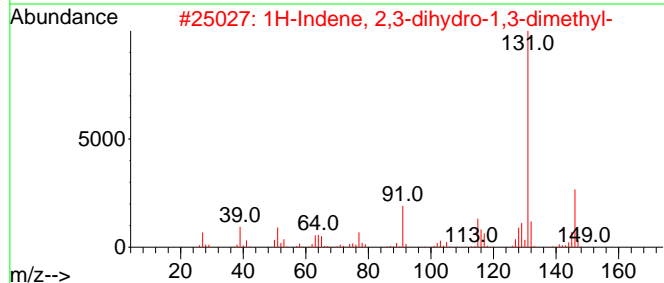
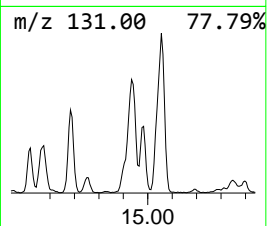
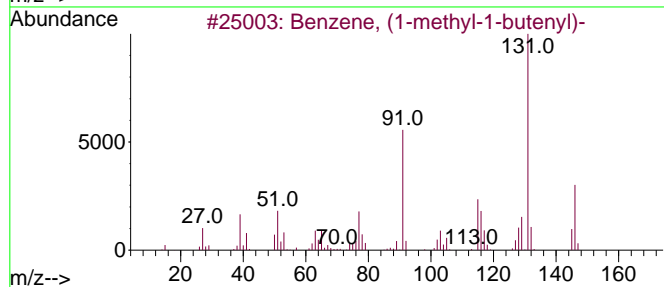
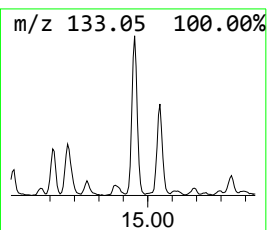
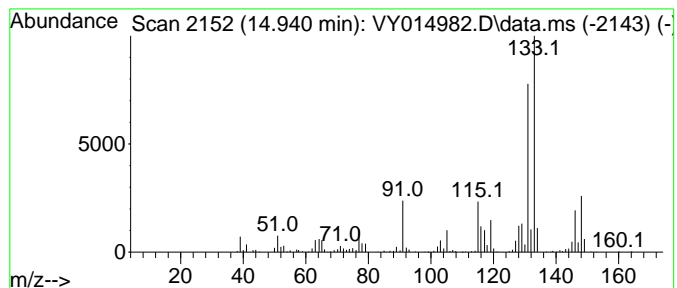
Quant Method : Z:\voasrv\HPCHEM1\MSVOA\_Y\methods\82Y080723S.M  
 Quant Title : SW846 8260

TIC Library : C:\Database\NIST20.L  
 TIC Integration Parameters: LSCINT.P

\*\*\*\*\*  
 Peak Number 10 Benzene, (1-methyl-1-butenyl)- Concentration Rank 9

R.T.	EstConc	Area	Relative to ISTD	R.T.
14.940	24.09 ug/l	397038	1,4-Dichlorobenzene-d4	13.422

Hit#	of 5	Tentative ID	MW	MolForm	CAS#	Qual
1		Benzene, (1-methyl-1-butenyl)-	146	C11H14	053172-84-2	90
2		1H-Indene, 2,3-dihydro-1,3-dimet...	146	C11H14	004175-53-5	86
3		1H-Indene, 2,3-dihydro-1,2-dimet...	146	C11H14	017057-82-8	64
4		Benzene, 2-ethenyl-1,3,5-trimethyl-	146	C11H14	000769-25-5	55
5		Benzene, (3-methyl-2-butenyl)-	146	C11H14	004489-84-3	50



Data Path : Z:\voasrv\HPCHEM1\MSVOA\_Y\Data\VY080823\  
Data File : VY014982.D  
Acq On : 08 Aug 2023 14:01  
Operator : SY/MD  
Sample : 03929-01  
Misc : 5.05g/5.0mL/MSVOA\_Y/SOIL  
ALS Vial : 12 Sample Multiplier: 1

Instrument :  
MSVOA\_Y  
ClientSampleId :  
B-PP19

Quant Method : Z:\voasrv\HPCHEM1\MSVOA\_Y\methods\82Y080723S.M  
Quant Title : SW846 8260

TIC Library : C:\Database\NIST0.L  
TIC Integration Parameters: LSCINT.P

TIC Top Hit name	RT	EstConc	Units	Response	--Internal Standard--			
					#	RT	Resp	Conc
Pentane, 2,3-di...	7.868	26.9	ug/l	350468	1	7.783	652737	50.0
Butane, 2,2,3,3...	8.319	74.1	ug/l	1301850	2	8.685	878148	50.0
Pentane, 2,3,4-...	9.612	51.2	ug/l	898960	2	8.685	878148	50.0
Pentane, 2,3,3-...	9.746	71.9	ug/l	1262860	2	8.685	878148	50.0
Cyclohexane, 1,...	10.605	23.8	ug/l	516867	3	11.490	1085580	50.0
Benzene, 2-ethy...	13.971	45.1	ug/l	743336	4	13.422	824169	50.0
Benzene, 1-ethe...	14.081	35.2	ug/l	580592	4	13.422	824169	50.0
Benzene, 1,2,3,...	14.294	38.4	ug/l	632569	4	13.422	824169	50.0
Benzene, 1-ethe...	14.684	44.9	ug/l	740333	4	13.422	824169	50.0
Benzene, (1-met...	14.940	24.1	ug/l	397038	4	13.422	824169	50.0