

Data Path : Z:\voasrv\HPCHEM1\MSVOA_Y\Data\VY081221\
 Data File : VY005623.D
 Acq On : 12 Aug 2021 15:29
 Operator : SY/MD
 Sample : M3331-08RE
 Misc : 6.84G/5ML/MSVOA_Y/SOIL
 ALS Vial : 16 Sample Multiplier: 1

Instrument :
 MSVOA_Y
 ClientSampleId :
 BSY1-SB-13-0-1

Quant Time: Aug 13 04:22:55 2021
 Quant Method : Z:\voasrv\HPCHEM1\MSVOA_Y\methods\82Y080221S.M
 Quant Title : SW846 8260
 QLast Update : Tue Aug 03 04:52:05 2021
 Response via : Initial Calibration

Compound	R.T.	QIon	Response	Conc	Units	Dev(Min)

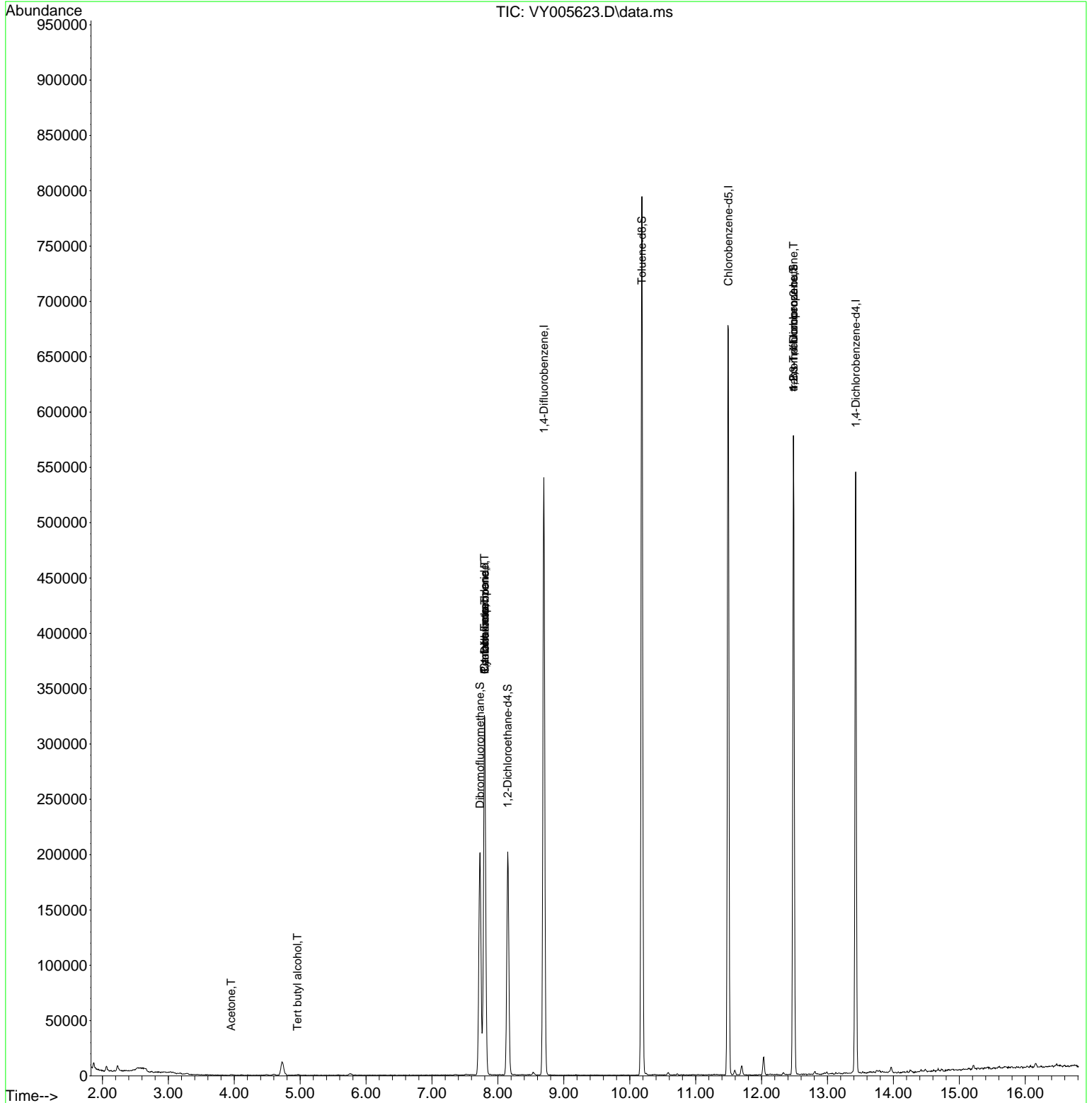
Internal Standards						
1) Pentafluorobenzene	7.801	168	267147	50.000	ug/l	0.00
34) 1,4-Difluorobenzene	8.697	114	454964	50.000	ug/l	0.00
63) Chlorobenzene-d5	11.496	117	367139	50.000	ug/l	0.00
72) 1,4-Dichlorobenzene-d4	13.428	152	138675	50.000	ug/l	0.00
System Monitoring Compounds						
33) 1,2-Dichloroethane-d4	8.149	65	159527	58.992	ug/l	0.00
Spiked Amount	50.000	Range	50 - 163	Recovery	=	117.980%
35) Dibromofluoromethane	7.728	113	139447	54.744	ug/l	0.00
Spiked Amount	50.000	Range	54 - 147	Recovery	=	109.480%
50) Toluene-d8	10.185	98	512645	47.987	ug/l	0.00
Spiked Amount	50.000	Range	49 - 140	Recovery	=	95.980%
62) 4-Bromofluorobenzene	12.483	95	149100	42.147	ug/l	0.00
Spiked Amount	50.000	Range	25 - 144	Recovery	=	84.300%
Target Compounds						
					Qvalue	
11) Tert butyl alcohol	4.960	59	834	3.120	ug/l #	73
16) Acetone	3.954	43	993	1.456	ug/l #	89
20) Methylene Chloride	4.723	84	9076	Below Cal		89
31) Cyclohexane	7.801	56	5124	1.105	ug/l #	8
36) 1,1-Dichloropropene	7.801	75	18822	4.411	ug/l #	49
38) Carbon Tetrachloride	7.795	117	23838	5.140	ug/l #	17
76) 1,2,3-Trichloropropane	12.483	75	81512	56.721	ug/l #	100
81) trans-1,4-Dichloro-2-b...	12.483	75	81512	114.342	ug/l #	11

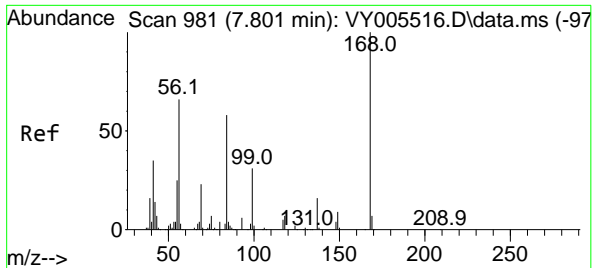
(#) = qualifier out of range (m) = manual integration (+) = signals summed

Data Path : Z:\voasrv\HPCHEM1\MSVOA_Y\Data\VY081221\
 Data File : VY005623.D
 Acq On : 12 Aug 2021 15:29
 Operator : SY/MD
 Sample : M3331-08RE
 Misc : 6.84G/5ML/MSVOA_Y/SOIL
 ALS Vial : 16 Sample Multiplier: 1

Instrument :
 MSVOA_Y
 ClientSampleID :
 BSY1-SB-13-0-1

Quant Time: Aug 13 04:22:55 2021
 Quant Method : Z:\voasrv\HPCHEM1\MSVOA_Y\methods\82Y080221S.M
 Quant Title : SW846 8260
 QLast Update : Tue Aug 03 04:52:05 2021
 Response via : Initial Calibration

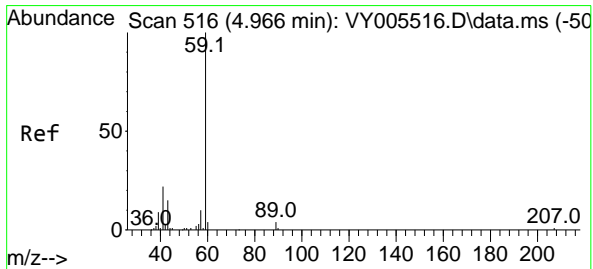
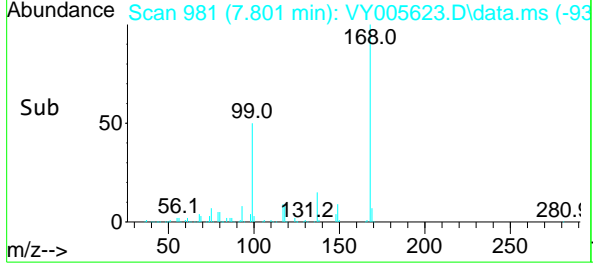
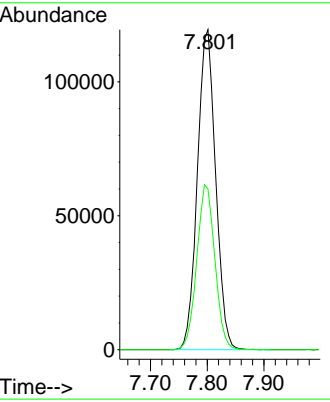
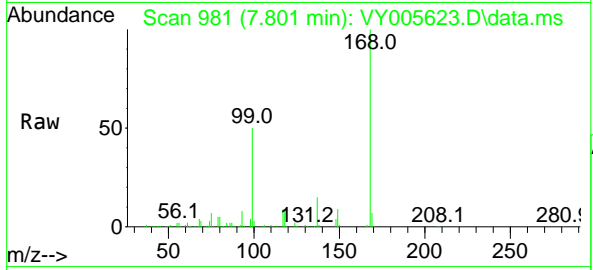




#1
 Pentafluorobenzene
 Concen: 50.000 ug/l
 RT: 7.801 min Scan# 981
 Delta R.T. 0.000 min
 Lab File: VY005623.D
 Acq: 12 Aug 2021 15:29

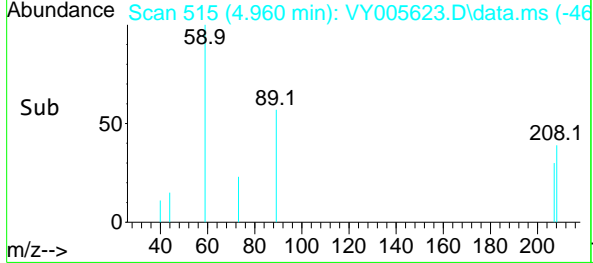
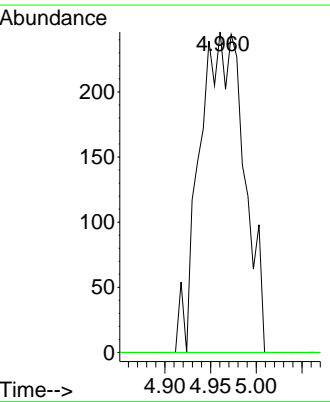
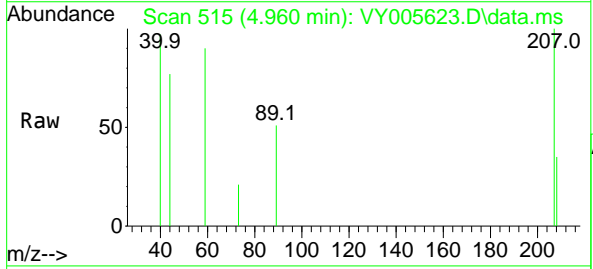
Instrument :
 MSVOA_Y
 ClientSampled :
 BSY1-SB-13-0-1

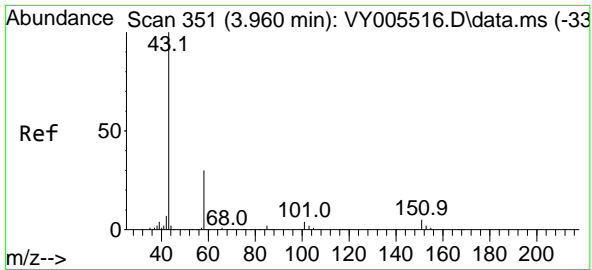
Tgt Ion:168 Resp: 267147
 Ion Ratio Lower Upper
 168 100
 99 50.3 38.9 58.3



#11
 Tert butyl alcohol
 Concen: 3.120 ug/l
 RT: 4.960 min Scan# 515
 Delta R.T. -0.006 min
 Lab File: VY005623.D
 Acq: 12 Aug 2021 15:29

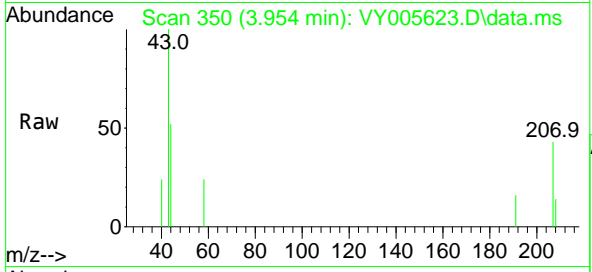
Tgt Ion: 59 Resp: 834
 Ion Ratio Lower Upper
 59 100
 57 0.0 8.0 12.0#



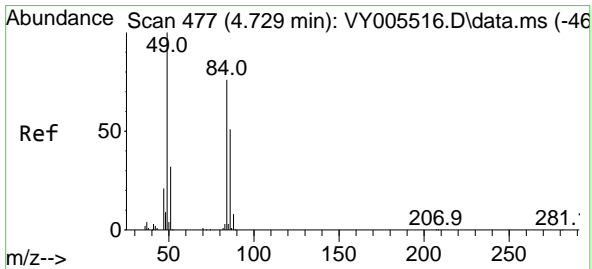
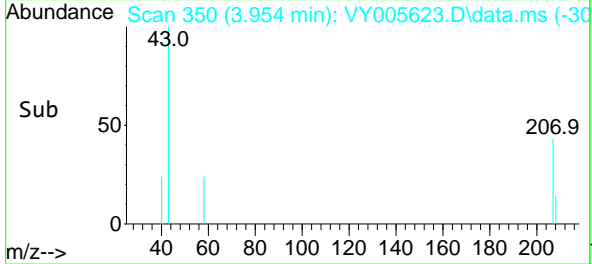
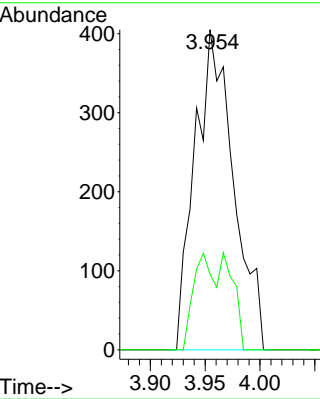


#16
 Acetone
 Concen: 1.456 ug/l
 RT: 3.954 min Scan# 350
 Delta R.T. -0.006 min
 Lab File: VY005623.D
 Acq: 12 Aug 2021 15:29

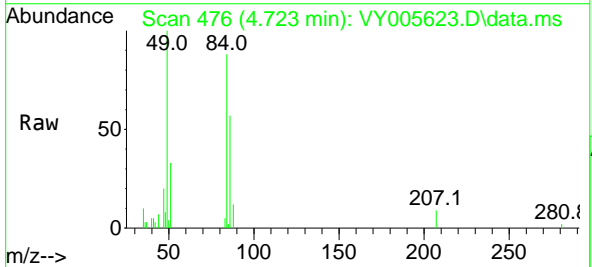
Instrument :
 MSVOA_Y
 ClientSampled :
 BSY1-SB-13-0-1



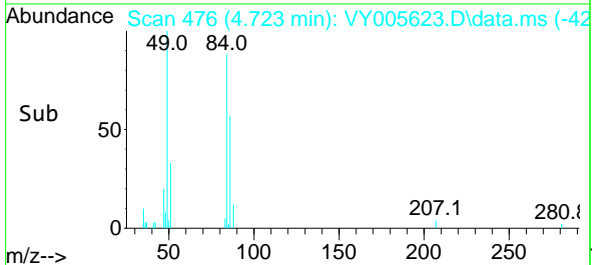
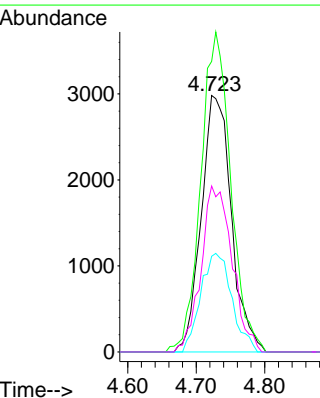
Tgt Ion: 43 Resp: 993
 Ion Ratio Lower Upper
 43 100
 58 23.7 23.8 35.6#

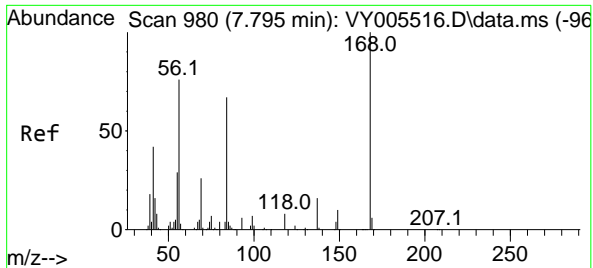


#20
 Methylene Chloride
 Concen: Below Cal
 RT: 4.723 min Scan# 476
 Delta R.T. -0.006 min
 Lab File: VY005623.D
 Acq: 12 Aug 2021 15:29



Tgt Ion: 84 Resp: 9076
 Ion Ratio Lower Upper
 84 100
 49 113.3 105.8 158.6
 51 37.3 33.4 50.2
 86 64.7 54.2 81.4

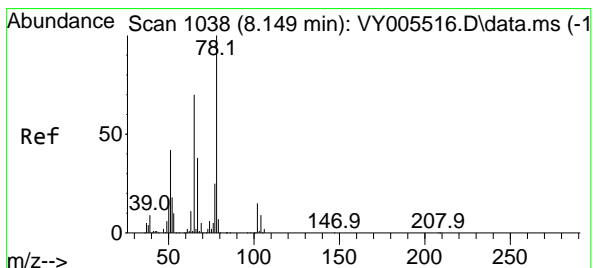
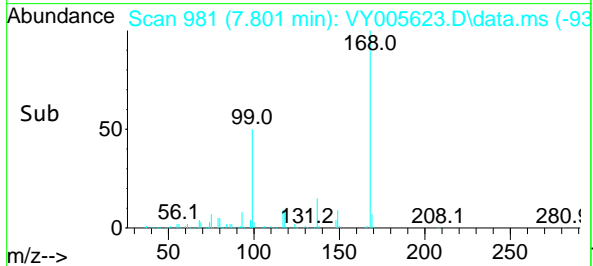
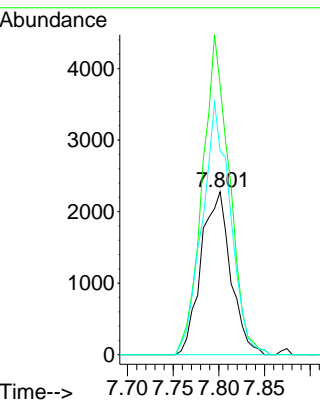
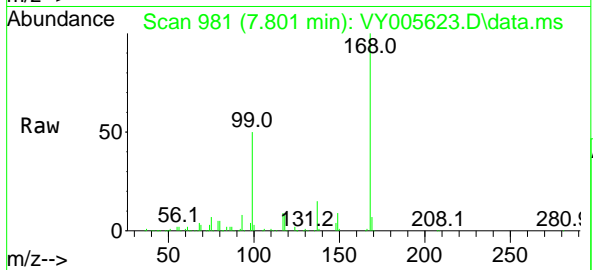




#31
 Cyclohexane
 Concen: 1.105 ug/l
 RT: 7.801 min Scan# 981
 Delta R.T. 0.006 min
 Lab File: VY005623.D
 Acq: 12 Aug 2021 15:29

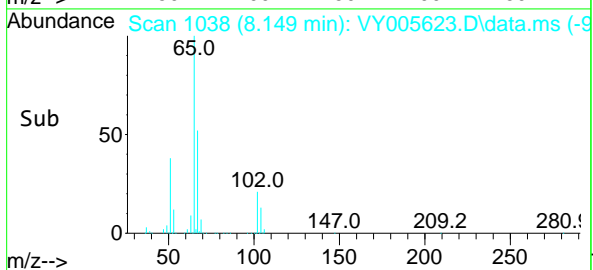
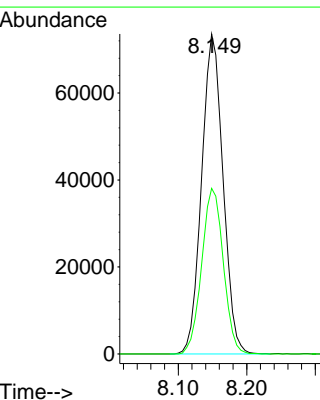
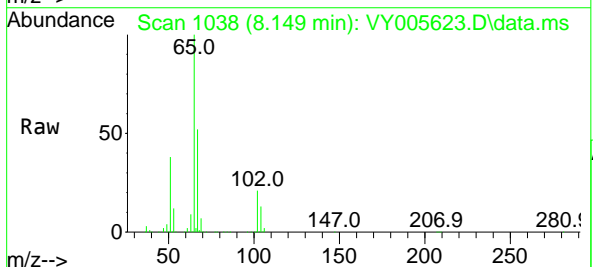
Instrument :
 MSVOA_Y
 ClientSampleId :
 BSY1-SB-13-0-1

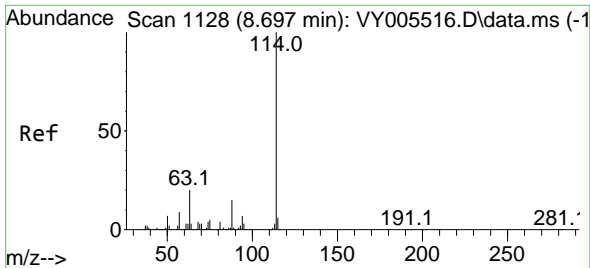
Tgt Ion	Resp	Lower	Upper
56	100		
69	165.5	27.7	41.5#
84	125.0	70.9	106.3#



#33
 1,2-Dichloroethane-d4
 Concen: 58.992 ug/l
 RT: 8.149 min Scan# 1038
 Delta R.T. 0.000 min
 Lab File: VY005623.D
 Acq: 12 Aug 2021 15:29

Tgt Ion	Resp	Lower	Upper
65	100		
67	52.3	0.0	103.4

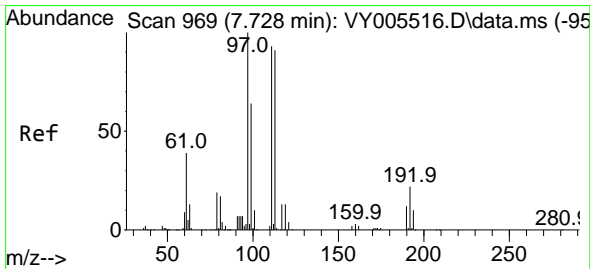
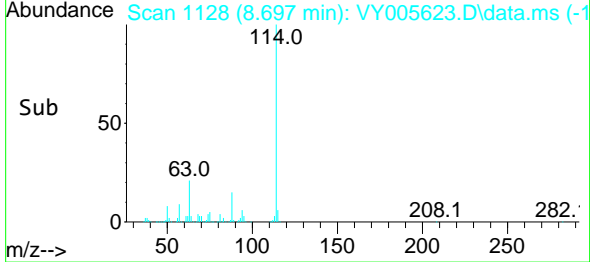
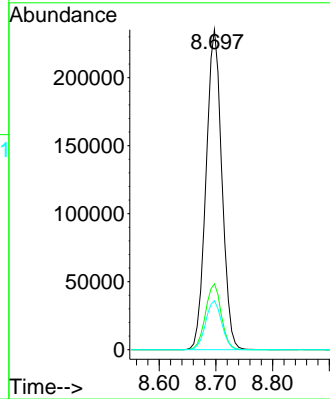
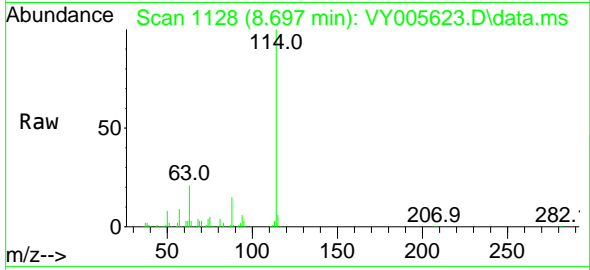




#34
 1,4-Difluorobenzene
 Concen: 50.000 ug/l
 RT: 8.697 min Scan# 1128
 Delta R.T. 0.000 min
 Lab File: VY005623.D
 Acq: 12 Aug 2021 15:29

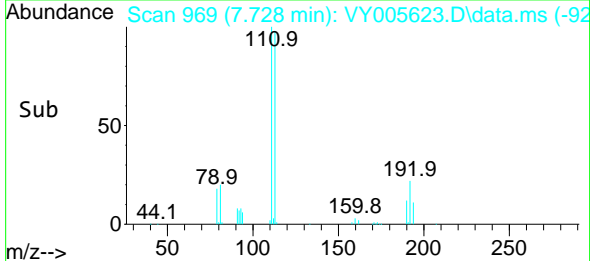
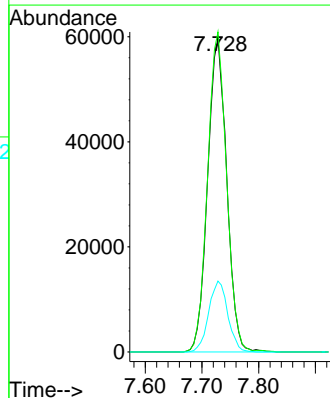
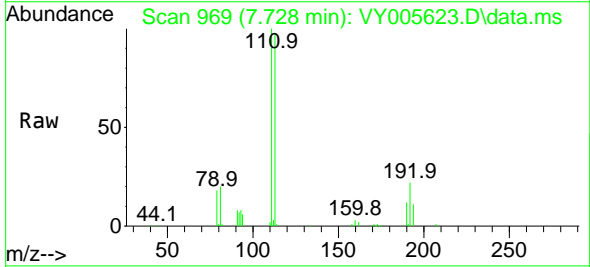
Instrument :
 MSVOA_Y
 ClientSampleId :
 BSY1-SB-13-0-1

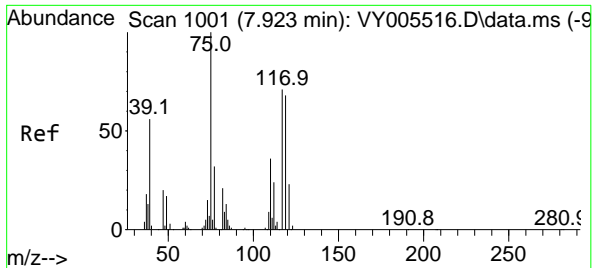
Tgt Ion	Resp	Lower	Upper
114	454964		
63	20.6	0.0	39.2
88	15.3	0.0	30.8



#35
 Dibromofluoromethane
 Concen: 54.744 ug/l
 RT: 7.728 min Scan# 969
 Delta R.T. 0.000 min
 Lab File: VY005623.D
 Acq: 12 Aug 2021 15:29

Tgt Ion	Resp	Lower	Upper
113	139447		
111	101.7	81.9	122.9
192	22.6	19.2	28.8

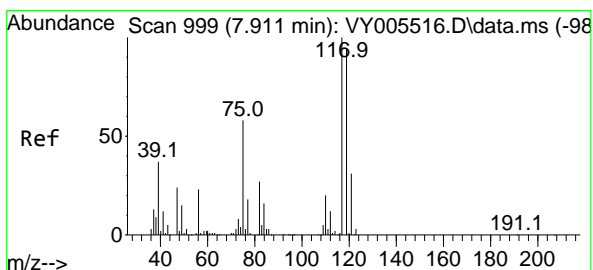
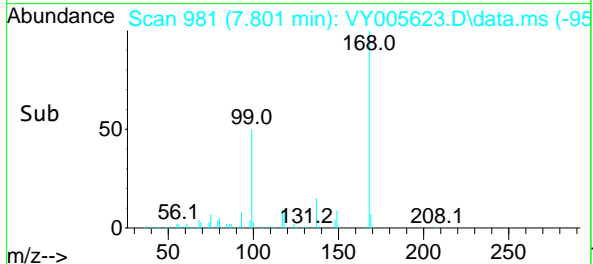
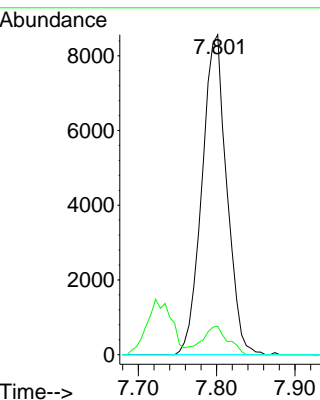
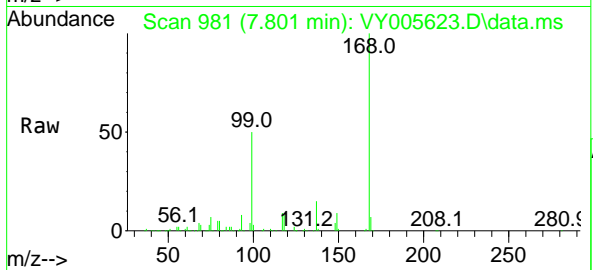




#36
 1,1-Dichloropropene
 Concen: 4.411 ug/l
 RT: 7.801 min Scan# 981
 Delta R.T. -0.122 min
 Lab File: VY005623.D
 Acq: 12 Aug 2021 15:29

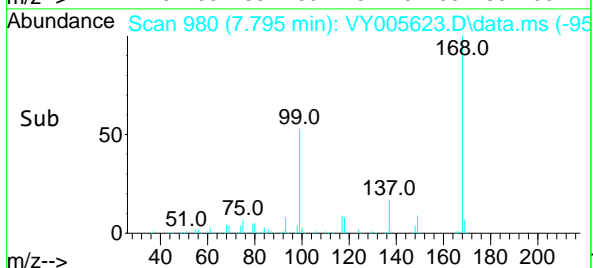
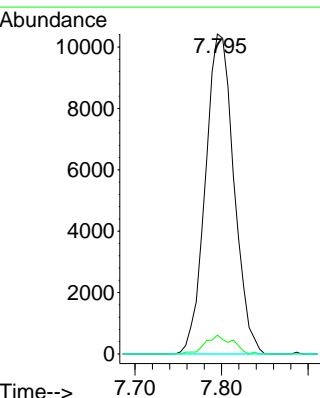
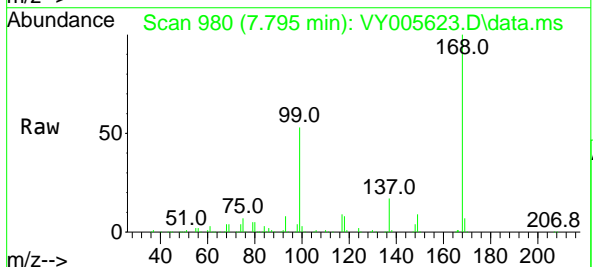
Instrument :
 MSVOA_Y
 ClientSampleId :
 BSY1-SB-13-0-1

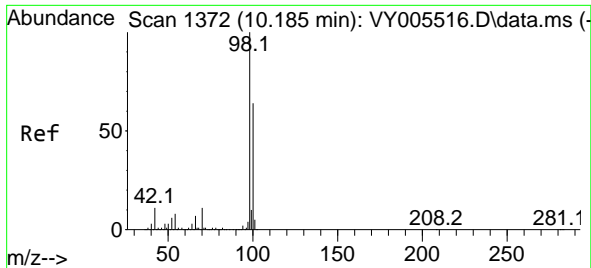
Tgt Ion	Resp	Lower	Upper
75	18822		
110	9.0	18.1	54.1#
77	0.0	25.1	37.7#



#38
 Carbon Tetrachloride
 Concen: 5.140 ug/l
 RT: 7.795 min Scan# 980
 Delta R.T. -0.116 min
 Lab File: VY005623.D
 Acq: 12 Aug 2021 15:29

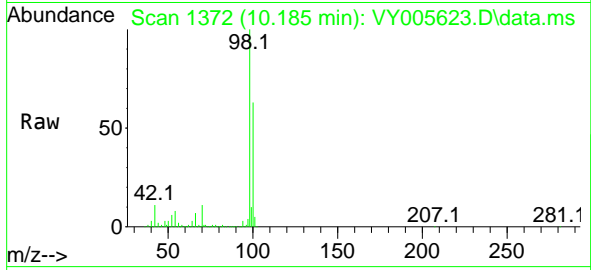
Tgt Ion	Resp	Lower	Upper
117	23838		
119	5.9	75.4	113.0#
121	0.0	25.1	37.7#



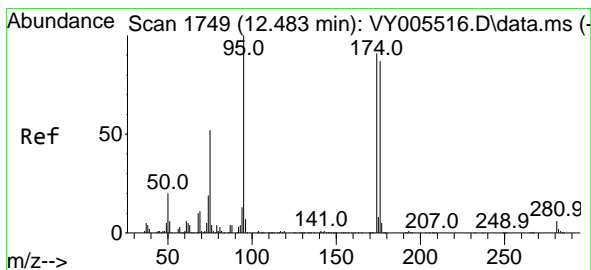
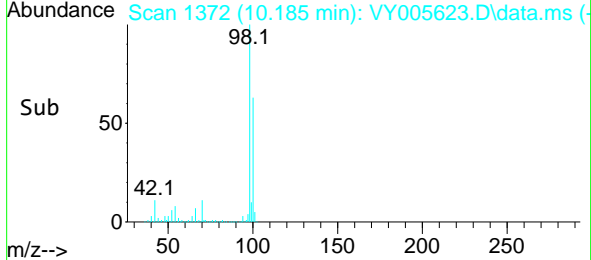
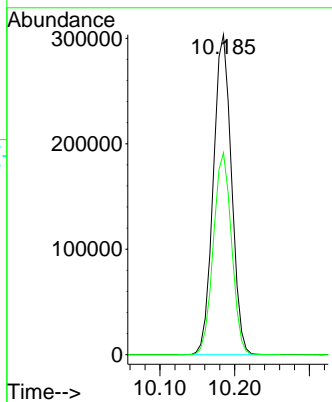


#50
 Toluene-d8
 Concen: 47.987 ug/l
 RT: 10.185 min Scan# 1372
 Delta R.T. 0.000 min
 Lab File: VY005623.D
 Acq: 12 Aug 2021 15:29

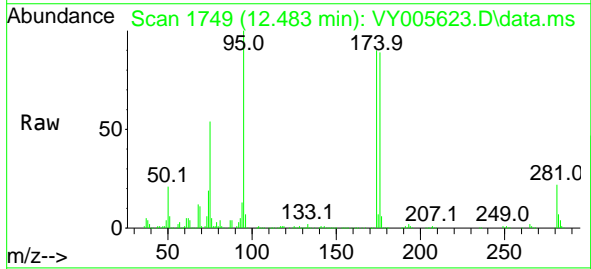
Instrument :
 MSVOA_Y
ClientSampled :
 BSY1-SB-13-0-1



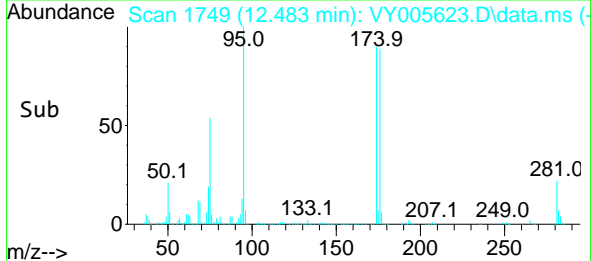
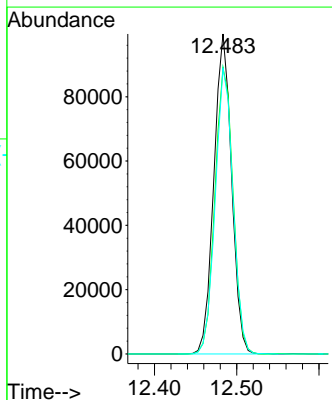
Tgt Ion: 98 Resp: 512645
 Ion Ratio Lower Upper
 98 100
 100 63.1 51.3 76.9

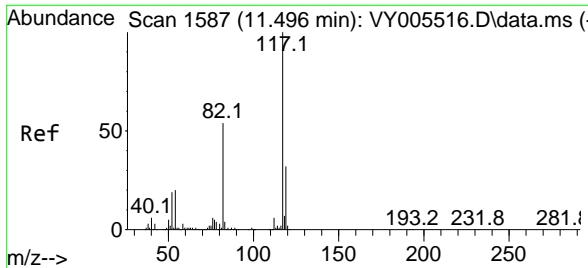


#62
 4-Bromofluorobenzene
 Concen: 42.147 ug/l
 RT: 12.483 min Scan# 1749
 Delta R.T. 0.000 min
 Lab File: VY005623.D
 Acq: 12 Aug 2021 15:29



Tgt Ion: 95 Resp: 149100
 Ion Ratio Lower Upper
 95 100
 174 91.8 0.0 191.4
 176 89.5 0.0 183.6



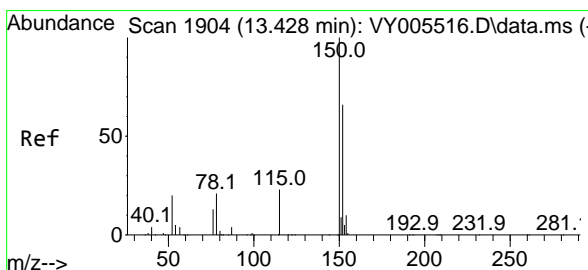
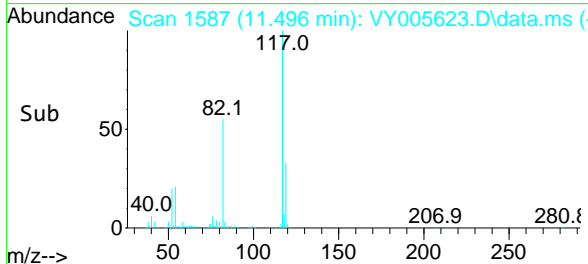
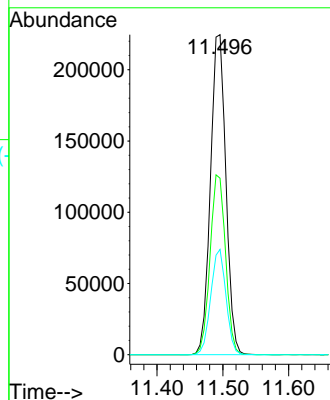
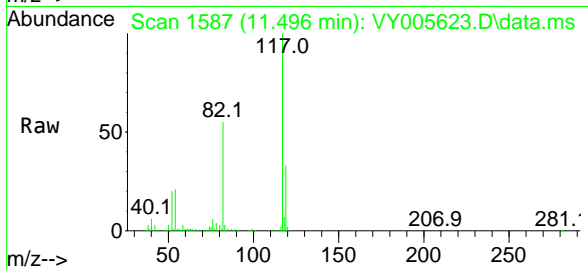


#63
 Chlorobenzene-d5
 Concen: 50.000 ug/l
 RT: 11.496 min Scan# 1587
 Delta R.T. 0.000 min
 Lab File: VY005623.D
 Acq: 12 Aug 2021 15:29

Instrument :
 MSVOA_Y
 ClientSampleId :
 BSY1-SB-13-0-1

Tgt Ion:117 Resp: 367139

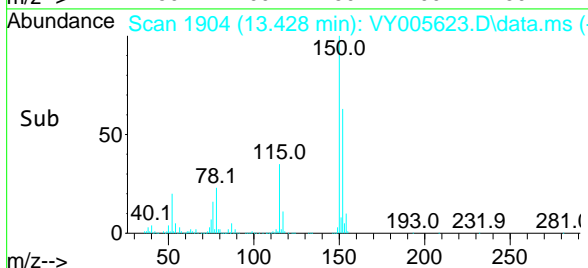
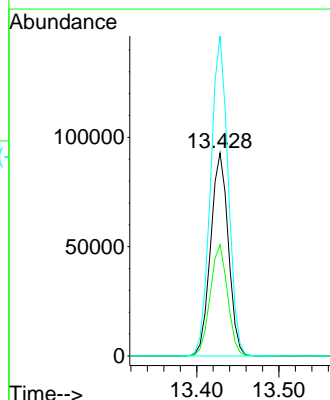
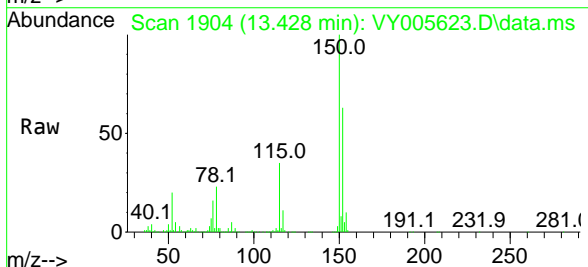
Ion	Ratio	Lower	Upper
117	100		
82	55.1	43.5	65.3
119	32.9	25.5	38.3

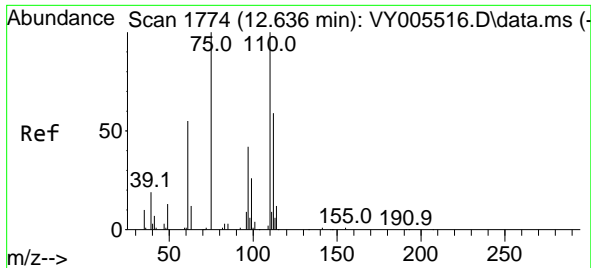


#72
 1,4-Dichlorobenzene-d4
 Concen: 50.000 ug/l
 RT: 13.428 min Scan# 1904
 Delta R.T. 0.000 min
 Lab File: VY005623.D
 Acq: 12 Aug 2021 15:29

Tgt Ion:152 Resp: 138675

Ion	Ratio	Lower	Upper
152	100		
115	54.0	27.3	81.9
150	156.3	0.0	350.2

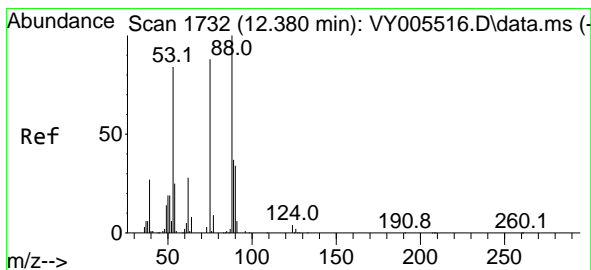
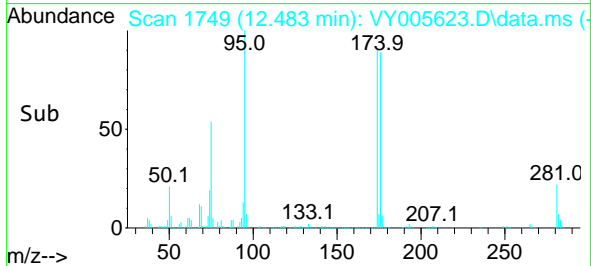
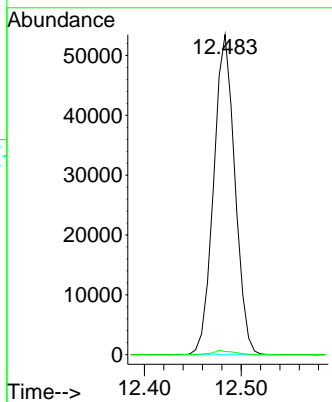
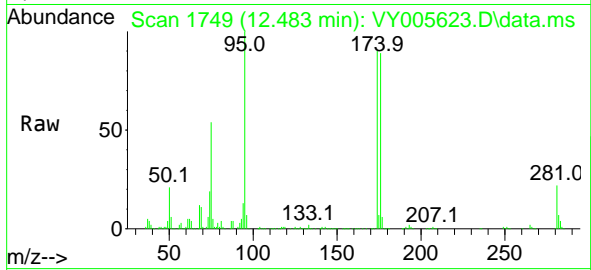




#76
 1,2,3-Trichloropropane
 Concen: 56.721 ug/l
 RT: 12.483 min Scan# 1749
 Delta R.T. -0.152 min
 Lab File: VY005623.D
 Acq: 12 Aug 2021 15:29

Instrument :
 MSVOA_Y
 ClientSampleId :
 BSY1-SB-13-0-1

Tgt Ion: 75 Resp: 81512
 Ion Ratio Lower Upper
 75 100
 77 1.3 0.0 0.0#



#81
 trans-1,4-Dichloro-2-butene
 Concen: 114.342 ug/l
 RT: 12.483 min Scan# 1749
 Delta R.T. 0.104 min
 Lab File: VY005623.D
 Acq: 12 Aug 2021 15:29

Tgt Ion: 75 Resp: 81512
 Ion Ratio Lower Upper
 75 100
 53 0.0 76.7 115.1#
 89 0.1 38.4 57.6#

