

Data Path : Z:\voasrv\HPCHEM1\MSVOA\_Y\Data\VY081621\  
 Data File : VY005668.D  
 Acq On : 16 Aug 2021 14:22  
 Operator : SY/MD  
 Sample : M3407-13RE  
 Misc : 8.67G/5ML/MSVOA\_Y/SOIL  
 ALS Vial : 13 Sample Multiplier: 1

Instrument :  
 MSVOA\_Y  
 ClientSampleId :  
 27N

Quant Time: Aug 17 05:18:59 2021  
 Quant Method : Z:\voasrv\HPCHEM1\MSVOA\_Y\methods\82Y080221S.M  
 Quant Title : SW846 8260  
 QLast Update : Tue Aug 03 04:52:05 2021  
 Response via : Initial Calibration

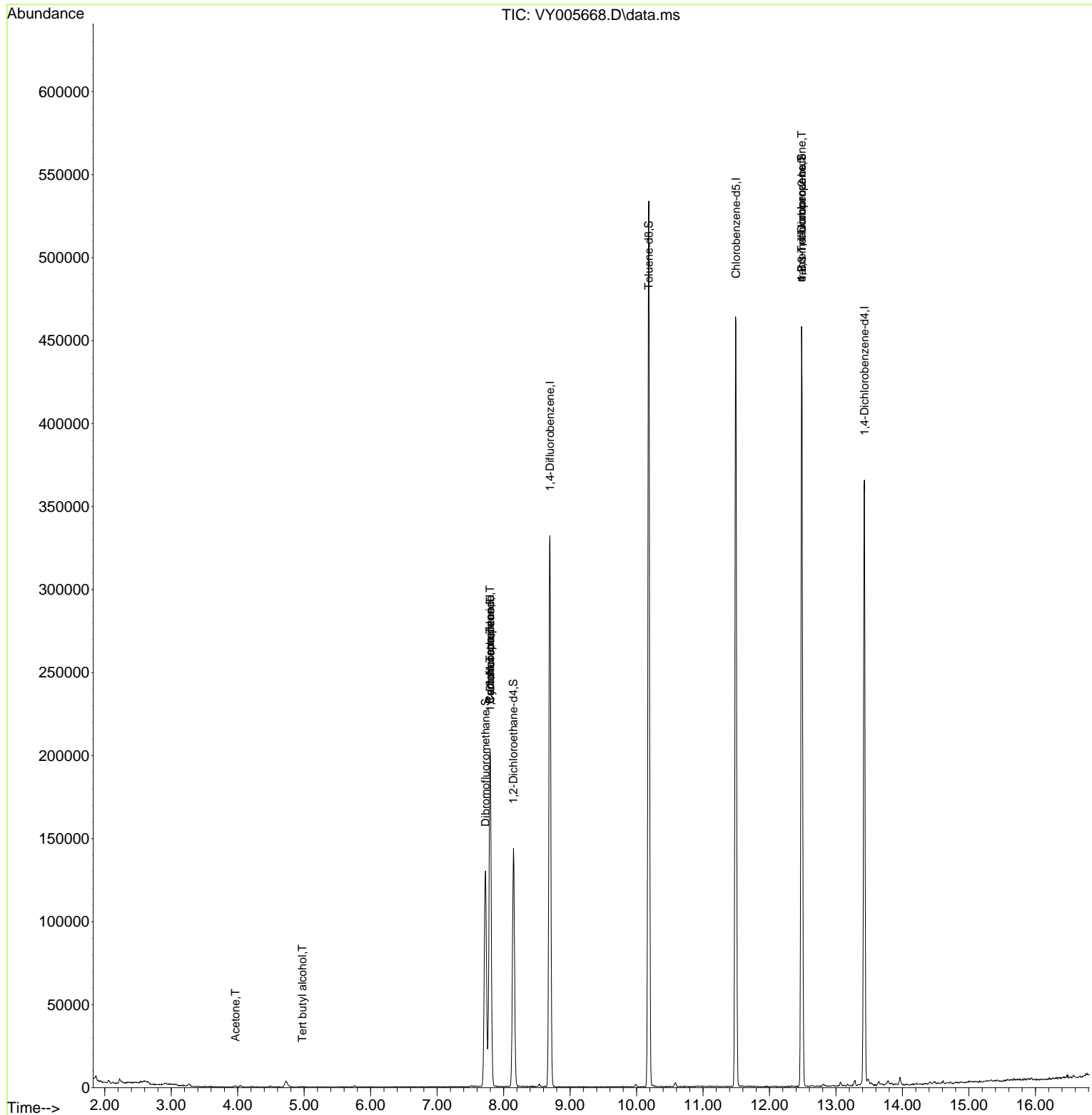
Compound	R.T.	QIon	Response	Conc	Units	Dev(Min)
-----						
Internal Standards						
1) Pentafluorobenzene	7.795	168	169481	50.000	ug/l	0.00
34) 1,4-Difluorobenzene	8.697	114	282393	50.000	ug/l	0.00
63) Chlorobenzene-d5	11.496	117	253660	50.000	ug/l	0.00
72) 1,4-Dichlorobenzene-d4	13.428	152	95605	50.000	ug/l	0.00
System Monitoring Compounds						
33) 1,2-Dichloroethane-d4	8.149	65	116350	67.820	ug/l	0.00
Spiked Amount	50.000	Range	50 - 163	Recovery	=	135.640%
35) Dibromofluoromethane	7.728	113	88040	55.685	ug/l	0.00
Spiked Amount	50.000	Range	54 - 147	Recovery	=	111.360%
50) Toluene-d8	10.185	98	345795	52.150	ug/l	0.00
Spiked Amount	50.000	Range	49 - 140	Recovery	=	104.300%
62) 4-Bromofluorobenzene	12.483	95	101731	46.330	ug/l	0.00
Spiked Amount	50.000	Range	25 - 144	Recovery	=	92.660%
Target Compounds						
					Qvalue	
11) Tert butyl alcohol	4.972	59	773	4.558	ug/l #	73
16) Acetone	3.966	43	1124	2.599	ug/l #	42
20) Methylene Chloride	4.729	84	2442	Below Cal		90
31) Cyclohexane	7.795	56	3597	1.222	ug/l #	31
36) 1,1-Dichloropropene	7.801	75	12002	4.531	ug/l #	51
38) Carbon Tetrachloride	7.795	117	16177	5.620	ug/l #	17
76) 1,2,3-Trichloropropane	12.483	75	56209	56.734	ug/l #	100
81) trans-1,4-Dichloro-2-b...	12.483	75	56209	114.369	ug/l #	11
-----						

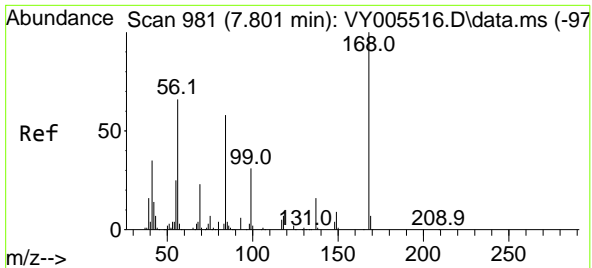
(#) = qualifier out of range (m) = manual integration (+) = signals summed

Data Path : Z:\voasrv\HPCHEM1\MSVOA\_Y\Data\VY081621\  
 Data File : VY005668.D  
 Acq On : 16 Aug 2021 14:22  
 Operator : SY/MD  
 Sample : M3407-13RE  
 Misc : 8.67G/5ML/MSVOA\_Y/SOIL  
 ALS Vial : 13 Sample Multiplier: 1

Instrument :  
 MSVOA\_Y  
 ClientSampled :  
 27N

Quant Time: Aug 17 05:18:59 2021  
 Quant Method : Z:\voasrv\HPCHEM1\MSVOA\_Y\methods\82Y080221S.M  
 Quant Title : SW846 8260  
 QLast Update : Tue Aug 03 04:52:05 2021  
 Response via : Initial Calibration

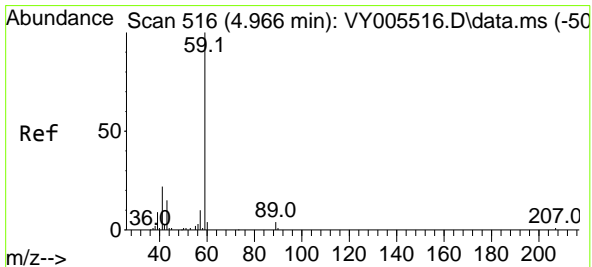
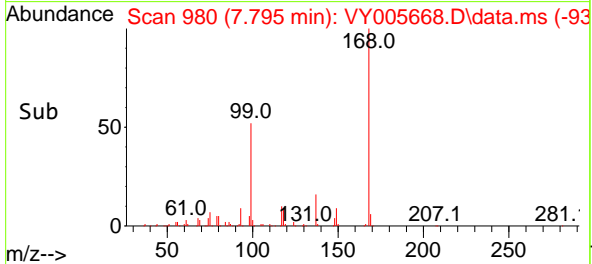
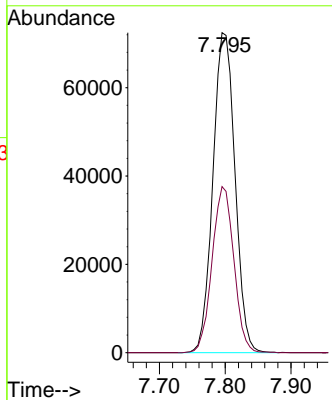
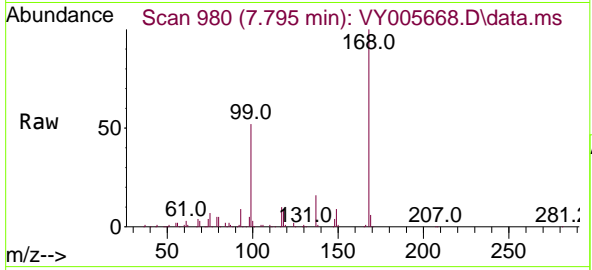




#1  
 Pentafluorobenzene  
 Concen: 50.000 ug/l  
 RT: 7.795 min Scan# 980  
 Delta R.T. -0.006 min  
 Lab File: VY005668.D  
 Acq: 16 Aug 2021 14:22

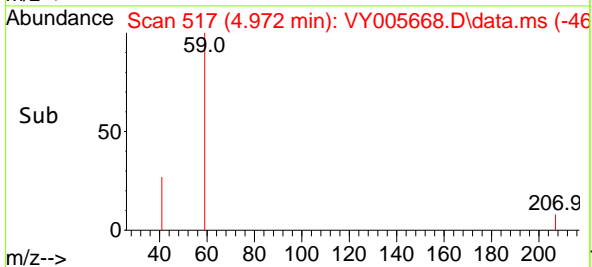
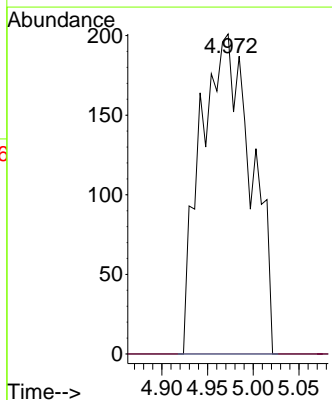
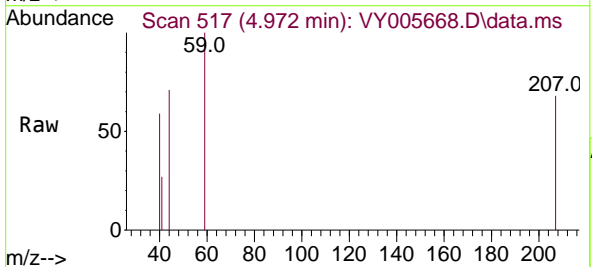
Instrument :  
 MSVOA\_Y  
 ClientSampled :  
 27N

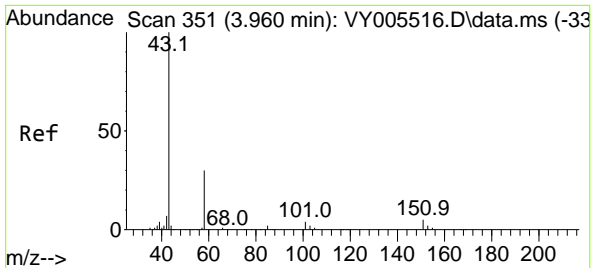
Tgt Ion:168 Resp: 169481  
 Ion Ratio Lower Upper  
 168 100  
 99 51.9 38.9 58.3



#11  
 Tert butyl alcohol  
 Concen: 4.558 ug/l  
 RT: 4.972 min Scan# 517  
 Delta R.T. 0.006 min  
 Lab File: VY005668.D  
 Acq: 16 Aug 2021 14:22

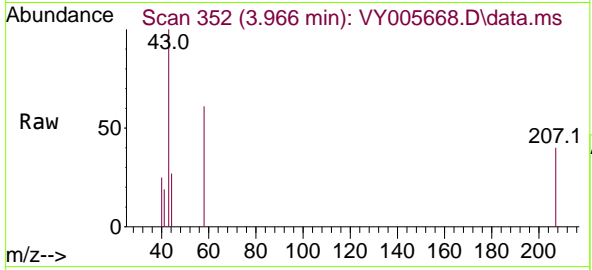
Tgt Ion: 59 Resp: 773  
 Ion Ratio Lower Upper  
 59 100  
 57 0.0 8.0 12.0#



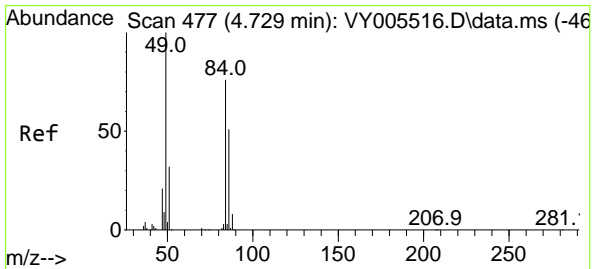
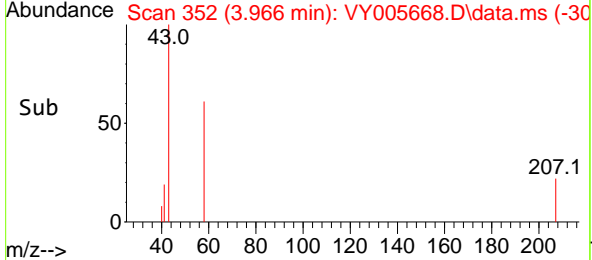
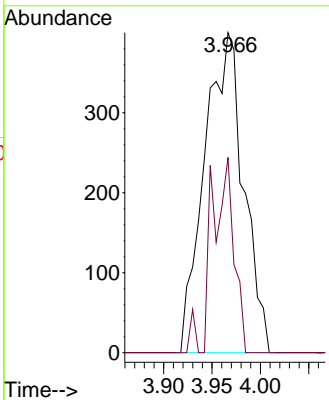


#16  
 Acetone  
 Concen: 2.599 ug/l  
 RT: 3.966 min Scan# 352  
 Delta R.T. 0.006 min  
 Lab File: VY005668.D  
 Acq: 16 Aug 2021 14:22

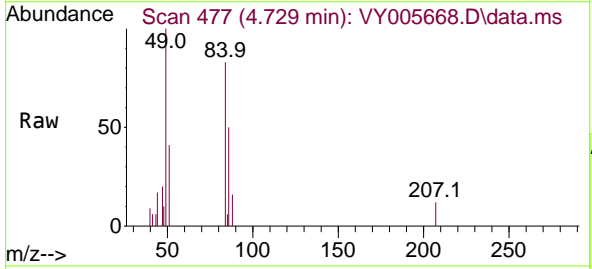
Instrument :  
 MSVOA\_Y  
 ClientSampled :  
 27N



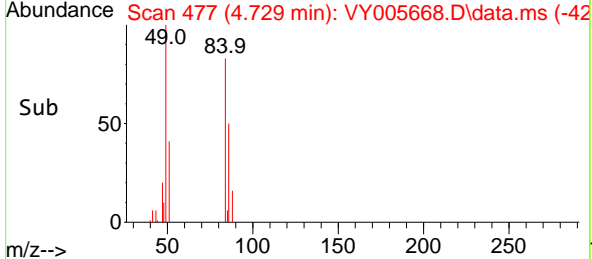
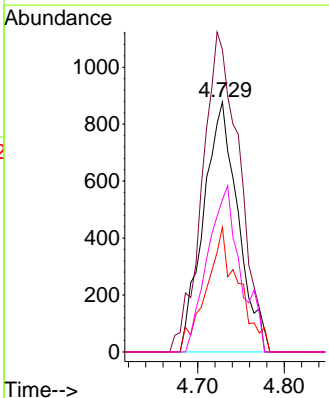
Tgt Ion: 43 Resp: 1124  
 Ion Ratio Lower Upper  
 43 100  
 58 61.0 23.8 35.6#

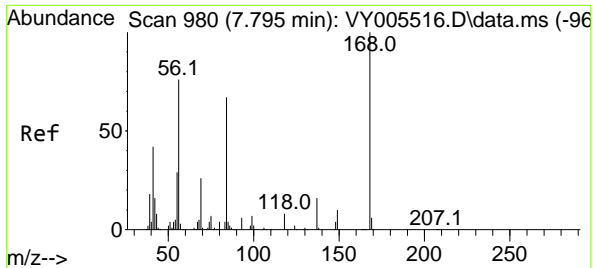


#20  
 Methylene Chloride  
 Concen: Below Cal  
 RT: 4.729 min Scan# 477  
 Delta R.T. -0.000 min  
 Lab File: VY005668.D  
 Acq: 16 Aug 2021 14:22



Tgt Ion: 84 Resp: 2442  
 Ion Ratio Lower Upper  
 84 100  
 49 121.0 105.8 158.6  
 51 49.9 33.4 50.2  
 86 60.9 54.2 81.4

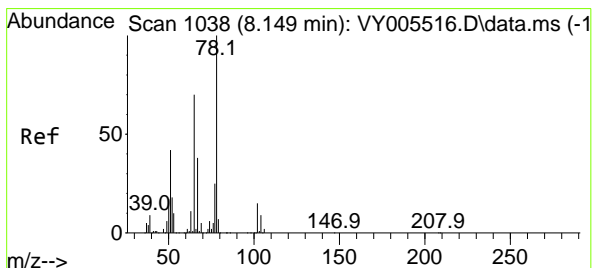
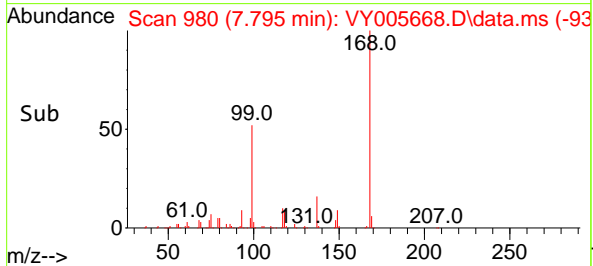
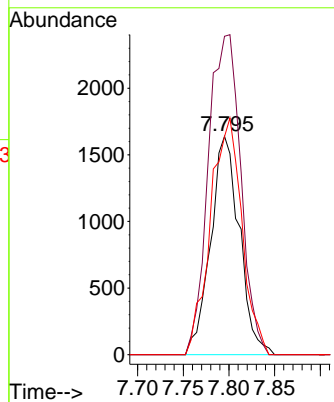
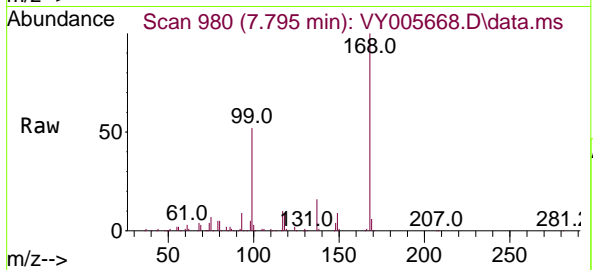




#31  
 Cyclohexane  
 Concen: 1.222 ug/l  
 RT: 7.795 min Scan# 980  
 Delta R.T. -0.000 min  
 Lab File: VY005668.D  
 Acq: 16 Aug 2021 14:22

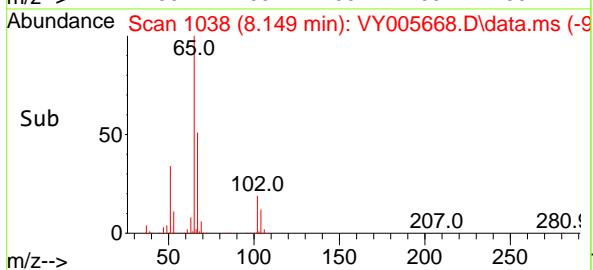
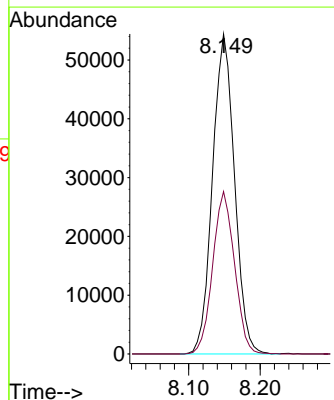
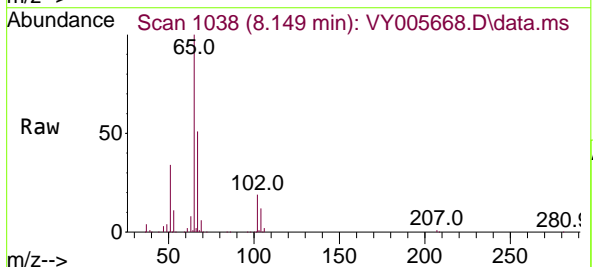
Instrument :  
 MSVOA\_Y  
 ClientSampled :  
 27N

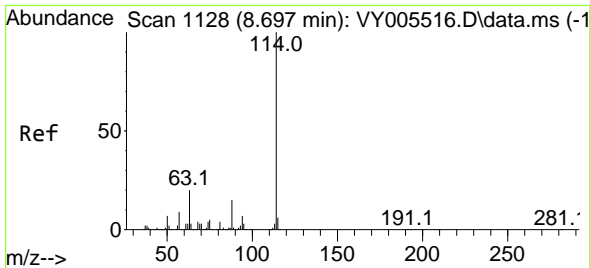
Tgt Ion	Resp	Lower	Upper
56	100		
69	145.7	27.7	41.5#
84	107.6	70.9	106.3#



#33  
 1,2-Dichloroethane-d4  
 Concen: 67.820 ug/l  
 RT: 8.149 min Scan# 1038  
 Delta R.T. -0.000 min  
 Lab File: VY005668.D  
 Acq: 16 Aug 2021 14:22

Tgt Ion	Resp	Lower	Upper
65	100		
67	50.3	0.0	103.4

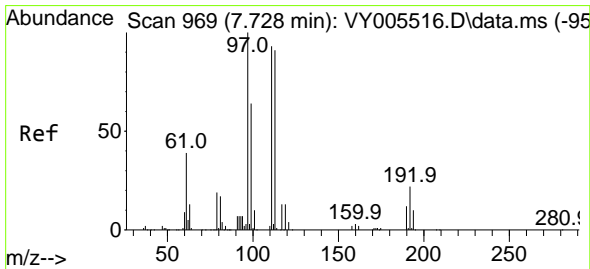
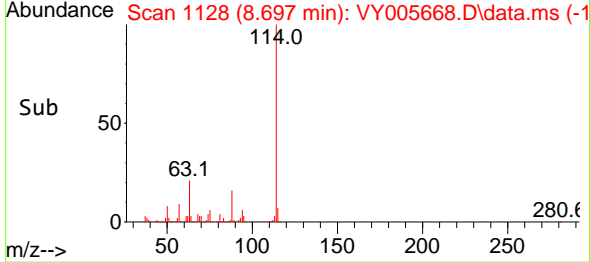
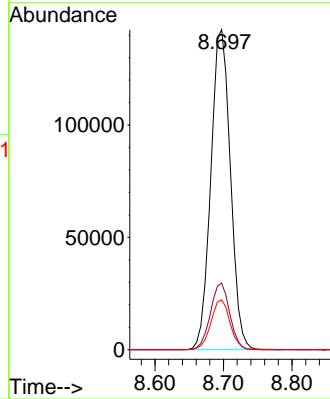
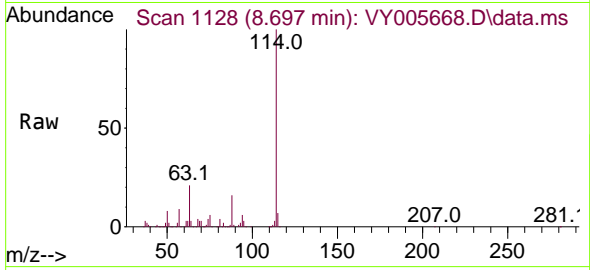




#34  
 1,4-Difluorobenzene  
 Concen: 50.000 ug/l  
 RT: 8.697 min Scan# 1128  
 Delta R.T. -0.000 min  
 Lab File: VY005668.D  
 Acq: 16 Aug 2021 14:22

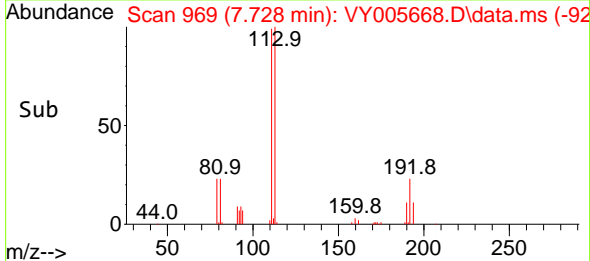
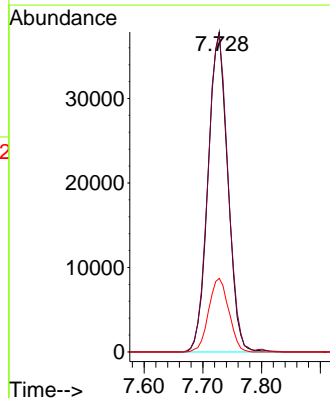
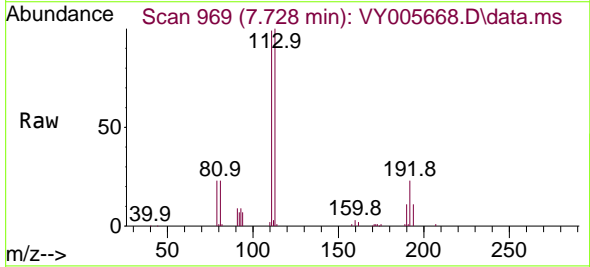
Instrument :  
 MSVOA\_Y  
 ClientSampled :  
 27N

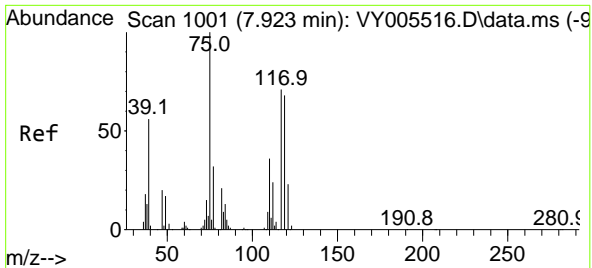
Tgt Ion	Resp	Lower	Upper
114	100		
63	20.8	0.0	39.2
88	15.5	0.0	30.8



#35  
 Dibromofluoromethane  
 Concen: 55.685 ug/l  
 RT: 7.728 min Scan# 969  
 Delta R.T. -0.000 min  
 Lab File: VY005668.D  
 Acq: 16 Aug 2021 14:22

Tgt Ion	Resp	Lower	Upper
113	100		
111	101.5	81.9	122.9
192	23.5	19.2	28.8

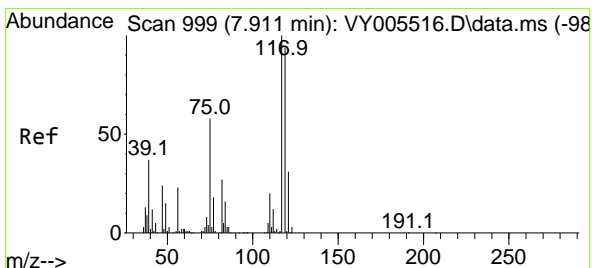
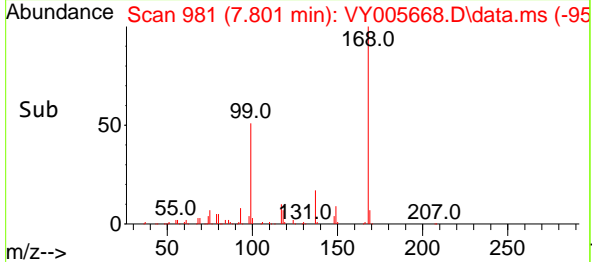
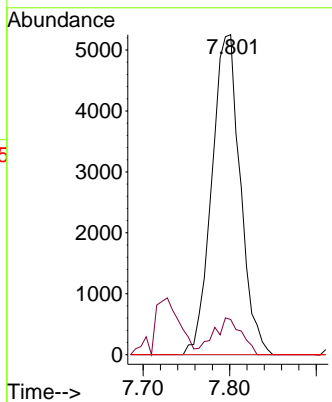
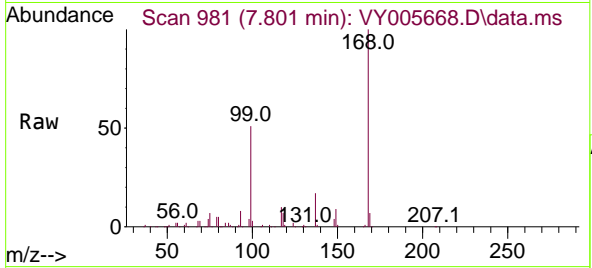




#36  
 1,1-Dichloropropene  
 Concen: 4.531 ug/l  
 RT: 7.801 min Scan# 981  
 Delta R.T. -0.122 min  
 Lab File: VY005668.D  
 Acq: 16 Aug 2021 14:22

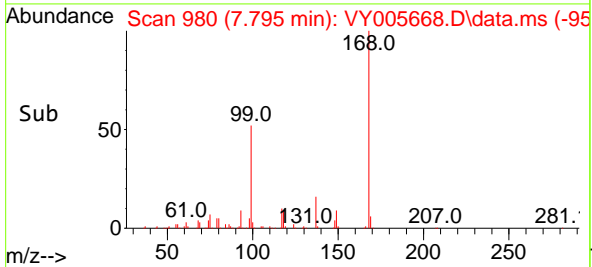
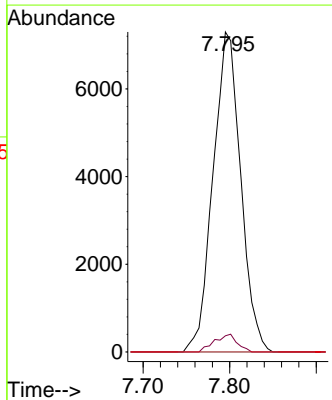
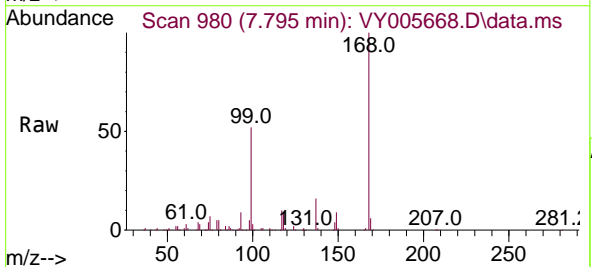
Instrument :  
 MSVOA\_Y  
 ClientSampled :  
 27N

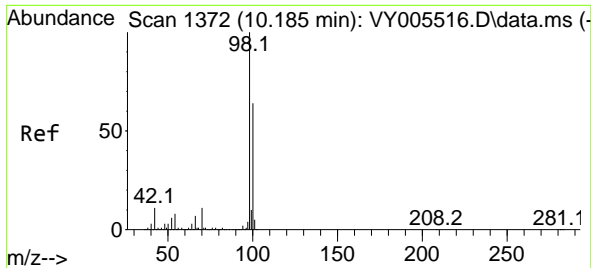
Tgt Ion	Resp	Lower	Upper
75	12002		
75	100		
110	11.0	18.1	54.1#
77	0.0	25.1	37.7#



#38  
 Carbon Tetrachloride  
 Concen: 5.620 ug/l  
 RT: 7.795 min Scan# 980  
 Delta R.T. -0.116 min  
 Lab File: VY005668.D  
 Acq: 16 Aug 2021 14:22

Tgt Ion	Resp	Lower	Upper
117	16177		
117	100		
119	5.0	75.4	113.0#
121	0.0	25.1	37.7#

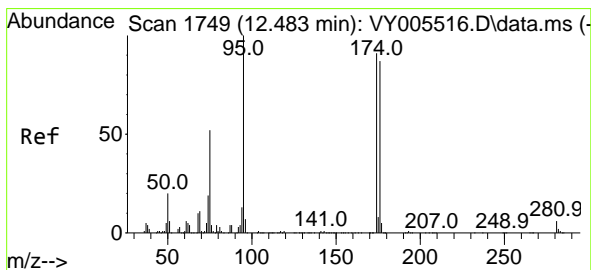
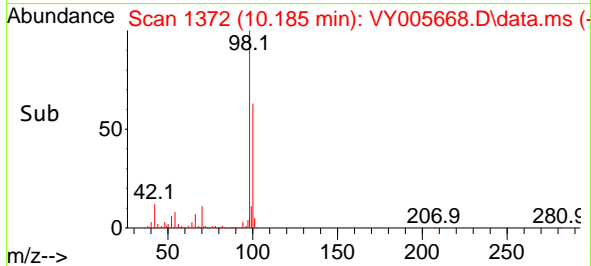
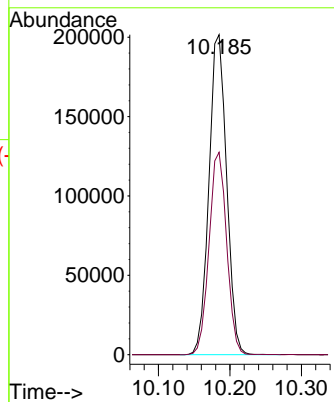
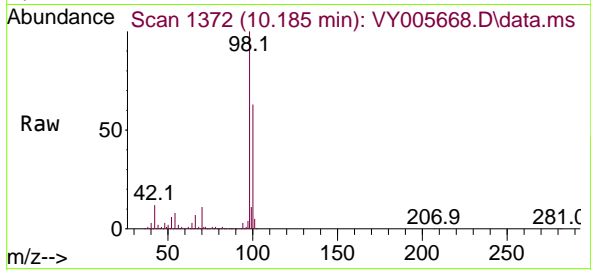




#50  
 Toluene-d8  
 Concen: 52.150 ug/l  
 RT: 10.185 min Scan# 1372  
 Delta R.T. -0.000 min  
 Lab File: VY005668.D  
 Acq: 16 Aug 2021 14:22

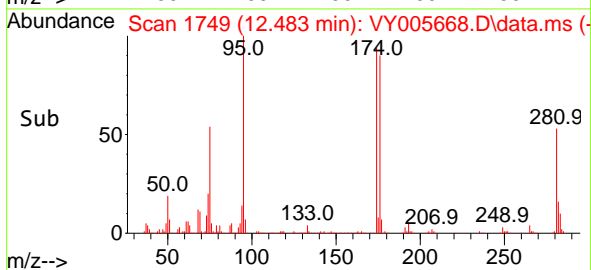
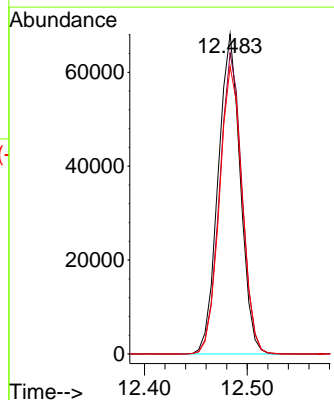
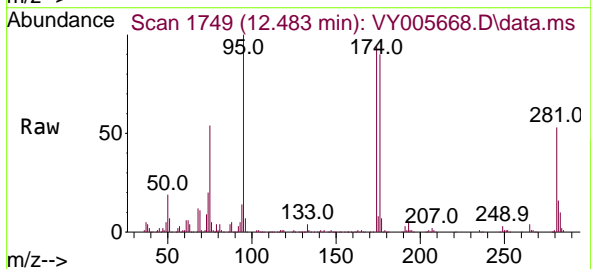
Instrument :  
 MSVOA\_Y  
 ClientSampled :  
 27N

Tgt Ion: 98 Resp: 345795  
 Ion Ratio Lower Upper  
 98 100  
 100 63.1 51.3 76.9

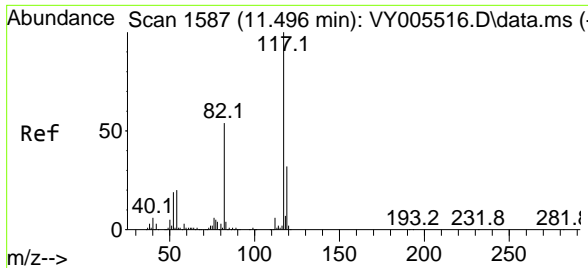


#62  
 4-Bromofluorobenzene  
 Concen: 46.330 ug/l  
 RT: 12.483 min Scan# 1749  
 Delta R.T. -0.000 min  
 Lab File: VY005668.D  
 Acq: 16 Aug 2021 14:22

Tgt Ion: 95 Resp: 101731  
 Ion Ratio Lower Upper  
 95 100  
 174 95.3 0.0 191.4  
 176 91.9 0.0 183.6





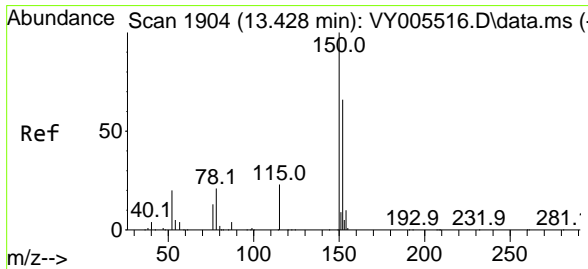
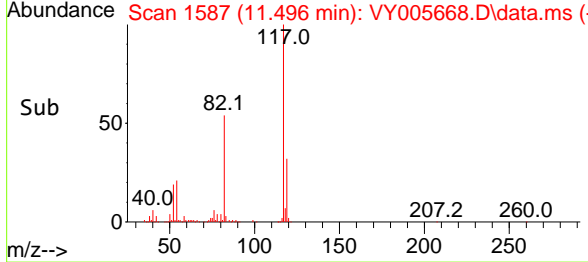
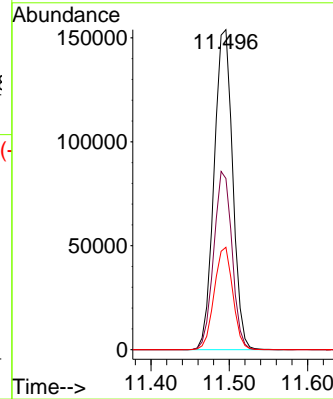
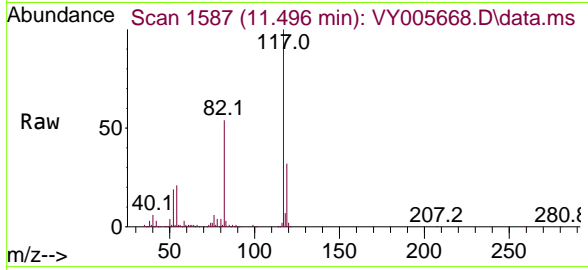


#63  
 Chlorobenzene-d5  
 Concen: 50.000 ug/l  
 RT: 11.496 min Scan# 1587  
 Delta R.T. -0.000 min  
 Lab File: VY005668.D  
 Acq: 16 Aug 2021 14:22

Instrument :  
 MSVOA\_Y  
 ClientSampled :  
 27N

Tgt Ion:117 Resp: 253660

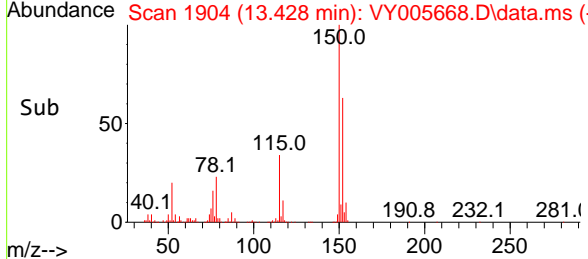
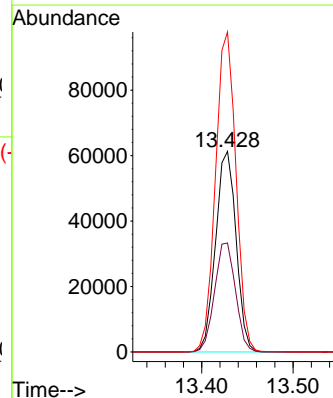
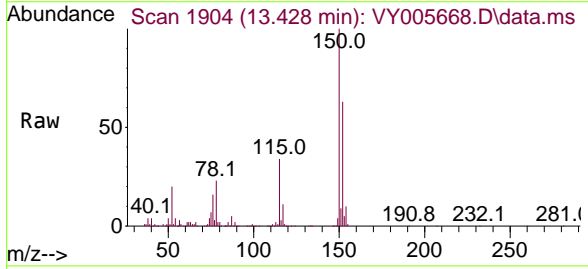
Ion	Ratio	Lower	Upper
117	100		
82	53.5	43.5	65.3
119	32.0	25.5	38.3

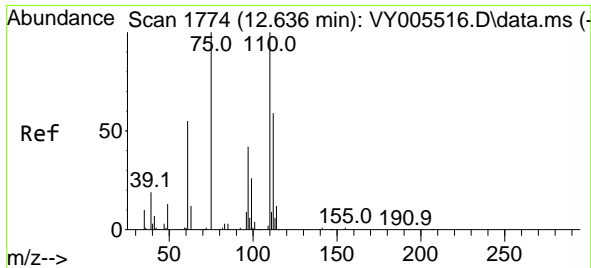


#72  
 1,4-Dichlorobenzene-d4  
 Concen: 50.000 ug/l  
 RT: 13.428 min Scan# 1904  
 Delta R.T. -0.000 min  
 Lab File: VY005668.D  
 Acq: 16 Aug 2021 14:22

Tgt Ion:152 Resp: 95605

Ion	Ratio	Lower	Upper
152	100		
115	55.5	27.3	81.9
150	159.0	0.0	350.2

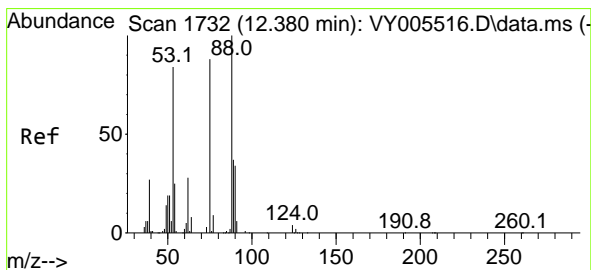
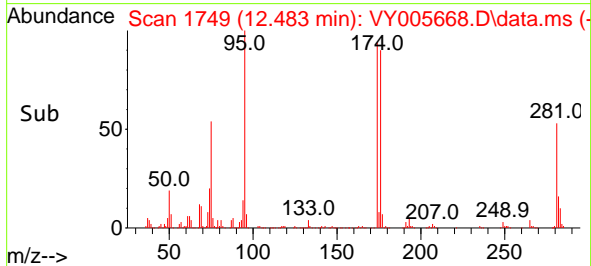
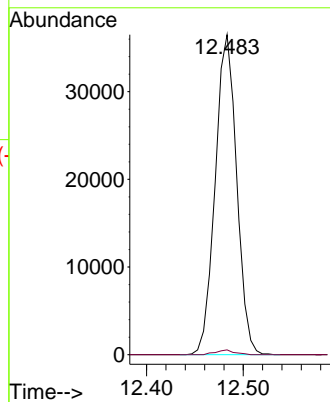
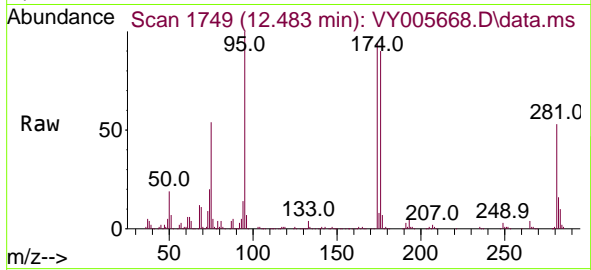




#76  
 1,2,3-Trichloropropane  
 Concen: 56.734 ug/l  
 RT: 12.483 min Scan# 1749  
 Delta R.T. -0.152 min  
 Lab File: VY005668.D  
 Acq: 16 Aug 2021 14:22

Instrument :  
 MSVOA\_Y  
 ClientSampled :  
 27N

Tgt Ion: 75 Resp: 56209  
 Ion Ratio Lower Upper  
 75 100  
 77 1.3 0.0 0.0#



#81  
 trans-1,4-Dichloro-2-butene  
 Concen: 114.369 ug/l  
 RT: 12.483 min Scan# 1749  
 Delta R.T. 0.104 min  
 Lab File: VY005668.D  
 Acq: 16 Aug 2021 14:22

Tgt Ion: 75 Resp: 56209  
 Ion Ratio Lower Upper  
 75 100  
 53 0.0 76.7 115.1#  
 89 0.6 38.4 57.6#

