

Data Path : Z:\voasrv\HPCHEM1\MSVOA\_Y\Data\VY081621\  
 Data File : VY005677.D  
 Acq On : 16 Aug 2021 17:51  
 Operator : SY/MD  
 Sample : M3389-01  
 Misc : 4.73G/5ML/MSVOA\_Y/SOIL  
 ALS Vial : 22 Sample Multiplier: 1

Instrument :  
 MSVOA\_Y  
 ClientSampled :  
 CRT-21

Quant Time: Aug 17 05:20:35 2021  
 Quant Method : Z:\voasrv\HPCHEM1\MSVOA\_Y\methods\82Y080221S.M  
 Quant Title : SW846 8260  
 QLast Update : Tue Aug 03 04:52:05 2021  
 Response via : Initial Calibration

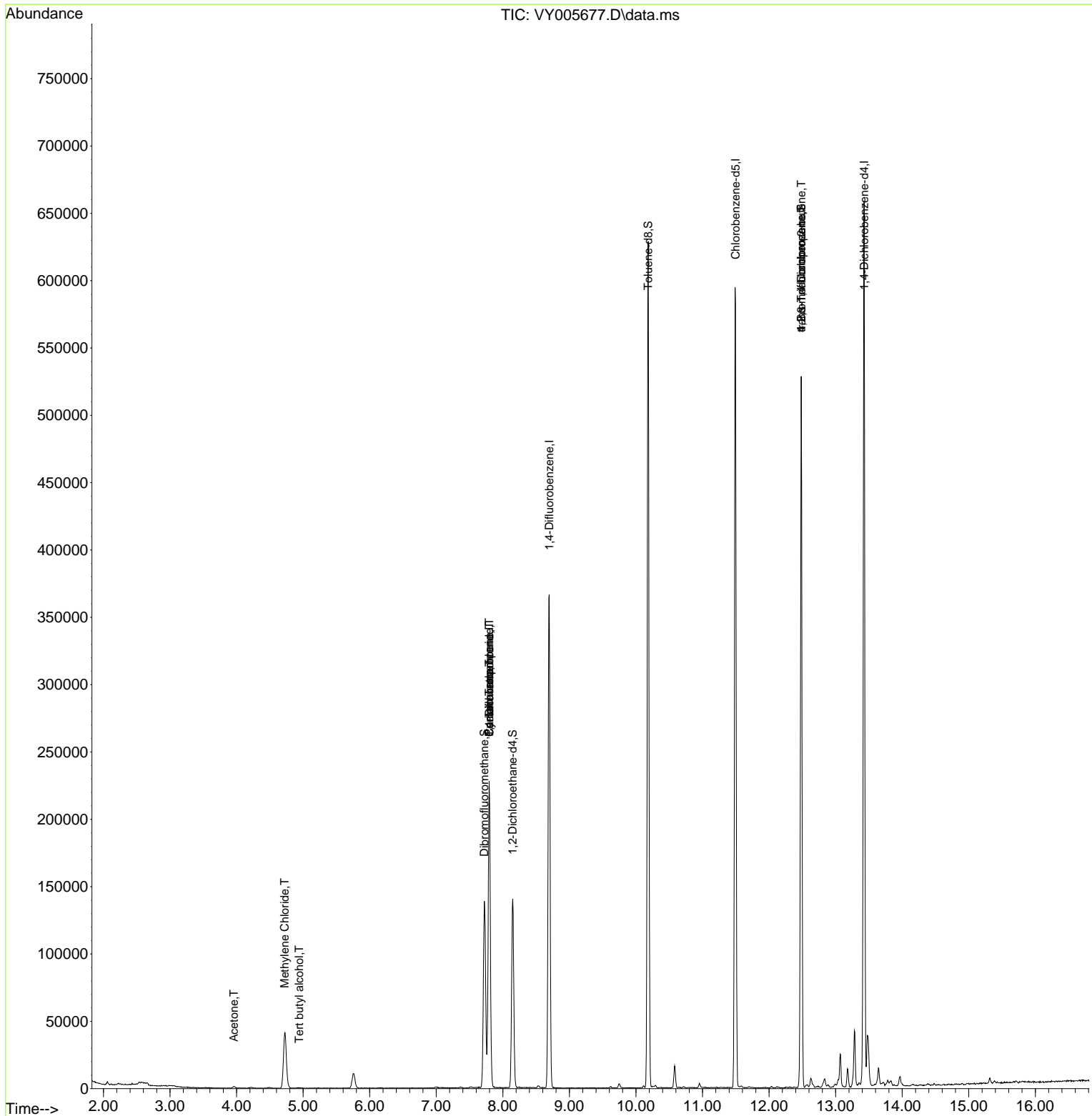
Compound	R.T.	QIon	Response	Conc	Units	Dev(Min)
-----						
Internal Standards						
1) Pentafluorobenzene	7.795	168	181606	50.000	ug/l	0.00
34) 1,4-Difluorobenzene	8.697	114	311623	50.000	ug/l	0.00
63) Chlorobenzene-d5	11.496	117	319256	50.000	ug/l	0.00
72) 1,4-Dichlorobenzene-d4	13.428	152	167796	50.000	ug/l	0.00
System Monitoring Compounds						
33) 1,2-Dichloroethane-d4	8.149	65	114634	62.359	ug/l	0.00
Spiked Amount	50.000	Range	50 - 163	Recovery	=	124.720%
35) Dibromofluoromethane	7.722	113	93716	53.715	ug/l	0.00
Spiked Amount	50.000	Range	54 - 147	Recovery	=	107.420%
50) Toluene-d8	10.185	98	404122	55.229	ug/l	0.00
Spiked Amount	50.000	Range	49 - 140	Recovery	=	110.460%
62) 4-Bromofluorobenzene	12.483	95	143035	59.030	ug/l	0.00
Spiked Amount	50.000	Range	25 - 144	Recovery	=	118.060%
Target Compounds						
					Qvalue	
11) Tert butyl alcohol	4.942	59	380	2.091	ug/l #	73
16) Acetone	3.960	43	2251	4.857	ug/l #	85
20) Methylene Chloride	4.722	84	29132	11.145	ug/l	96
31) Cyclohexane	7.795	56	3751	1.190	ug/l #	22
36) 1,1-Dichloropropene	7.795	75	13367	4.573	ug/l #	49
38) Carbon Tetrachloride	7.795	117	16847	5.303	ug/l #	17
76) 1,2,3-Trichloropropane	12.483	75	79802	45.894	ug/l #	100
81) trans-1,4-Dichloro-2-b...	12.483	75	79802	92.515	ug/l #	11
-----						

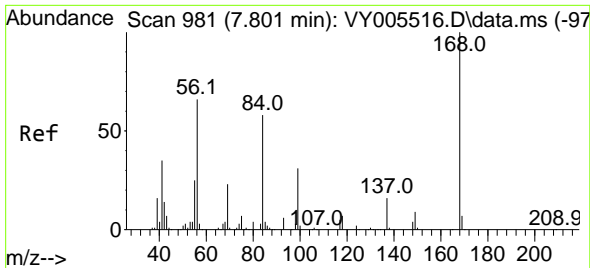
(#) = qualifier out of range (m) = manual integration (+) = signals summed

Data Path : Z:\voasrv\HPCHEM1\MSVOA\_Y\Data\VY081621\  
 Data File : VY005677.D  
 Acq On : 16 Aug 2021 17:51  
 Operator : SY/MD  
 Sample : M3389-01  
 Misc : 4.73G/5ML/MSVOA\_Y/SOIL  
 ALS Vial : 22 Sample Multiplier: 1

Instrument :  
 MSVOA\_Y  
 ClientSampled :  
 CRT-21

Quant Time: Aug 17 05:20:35 2021  
 Quant Method : Z:\voasrv\HPCHEM1\MSVOA\_Y\methods\82Y080221S.M  
 Quant Title : SW846 8260  
 QLast Update : Tue Aug 03 04:52:05 2021  
 Response via : Initial Calibration

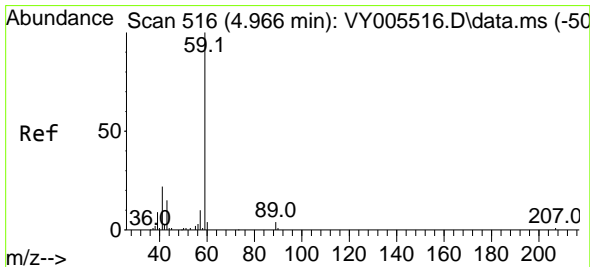
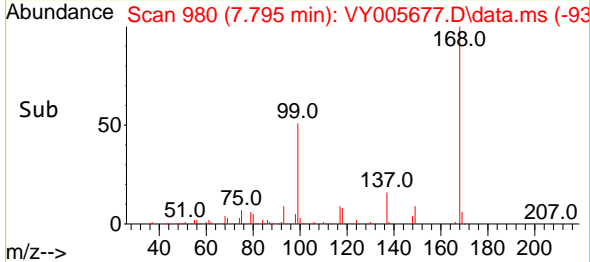
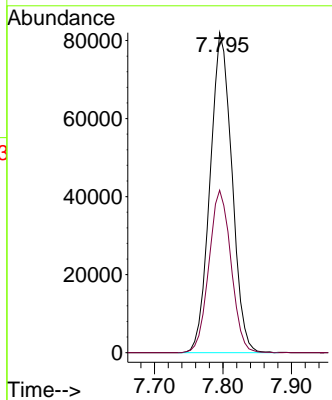
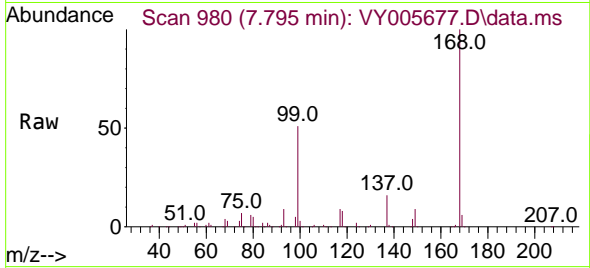




#1  
 Pentafluorobenzene  
 Concen: 50.000 ug/l  
 RT: 7.795 min Scan# 980  
 Delta R.T. -0.006 min  
 Lab File: VY005677.D  
 Acq: 16 Aug 2021 17:51

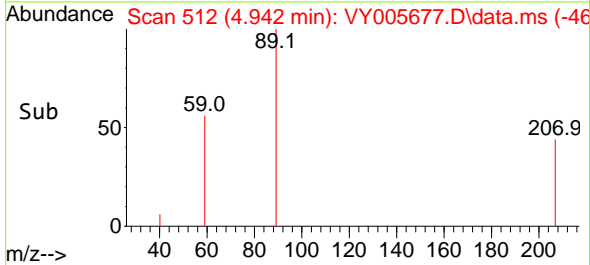
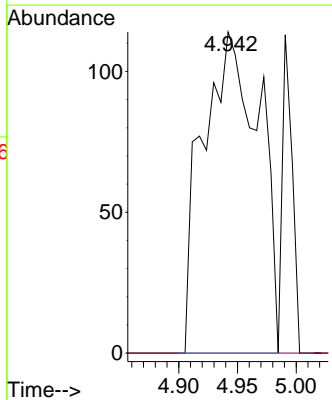
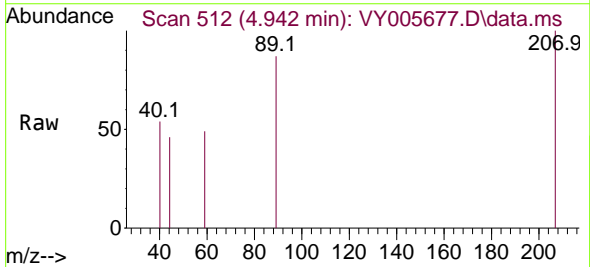
Instrument :  
 MSVOA\_Y  
 ClientSampled :  
 CRT-21

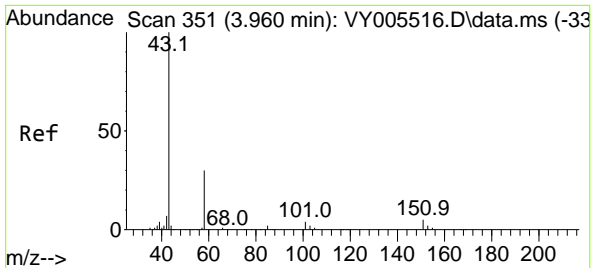
Tgt Ion:168 Resp: 181606  
 Ion Ratio Lower Upper  
 168 100  
 99 50.7 38.9 58.3



#11  
 Tert butyl alcohol  
 Concen: 2.091 ug/l  
 RT: 4.942 min Scan# 512  
 Delta R.T. -0.024 min  
 Lab File: VY005677.D  
 Acq: 16 Aug 2021 17:51

Tgt Ion: 59 Resp: 380  
 Ion Ratio Lower Upper  
 59 100  
 57 0.0 8.0 12.0#

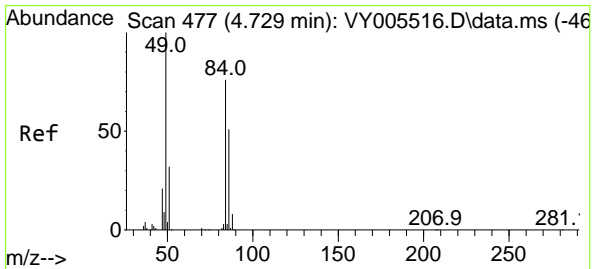
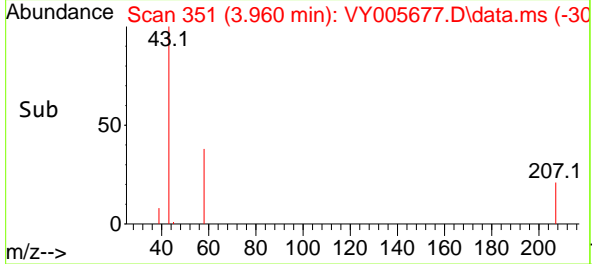
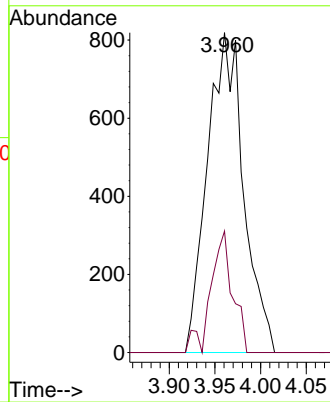
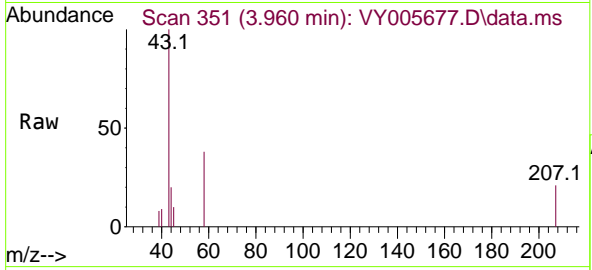




#16  
 Acetone  
 Concen: 4.857 ug/l  
 RT: 3.960 min Scan# 351  
 Delta R.T. 0.000 min  
 Lab File: VY005677.D  
 Acq: 16 Aug 2021 17:51

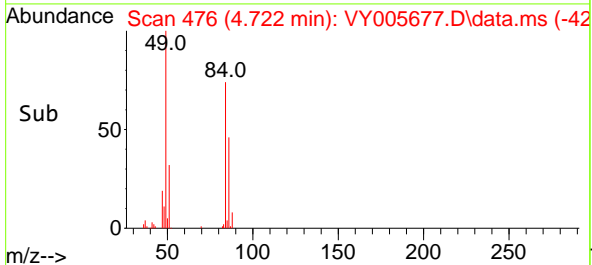
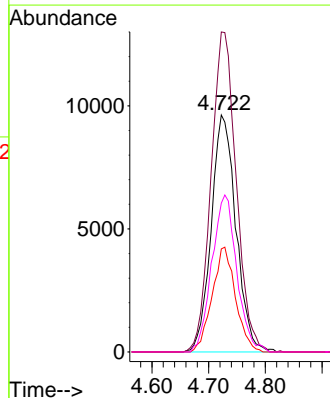
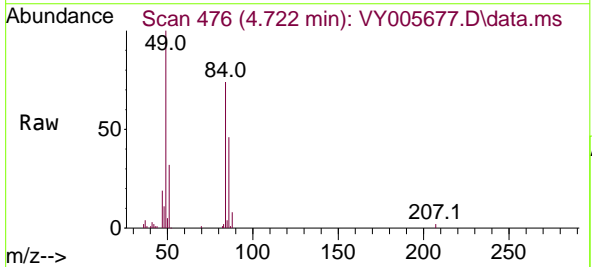
Instrument :  
 MSVOA\_Y  
 ClientSampled :  
 CRT-21

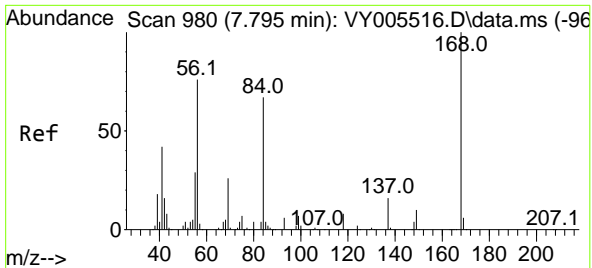
Tgt Ion: 43 Resp: 2251  
 Ion Ratio Lower Upper  
 43 100  
 58 38.0 23.8 35.6#



#20  
 Methylene Chloride  
 Concen: 11.145 ug/l  
 RT: 4.722 min Scan# 476  
 Delta R.T. -0.007 min  
 Lab File: VY005677.D  
 Acq: 16 Aug 2021 17:51

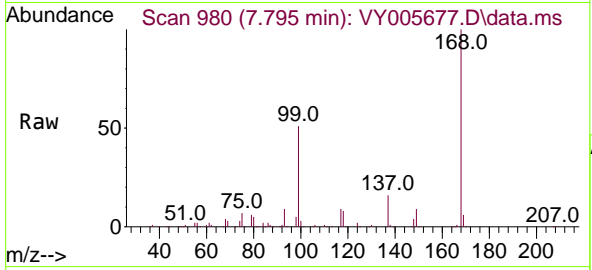
Tgt Ion: 84 Resp: 29132  
 Ion Ratio Lower Upper  
 84 100  
 49 135.1 105.8 158.6  
 51 43.5 33.4 50.2  
 86 62.8 54.2 81.4





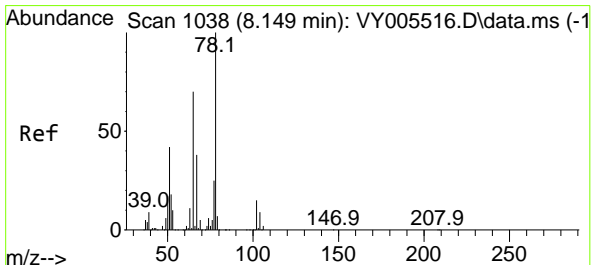
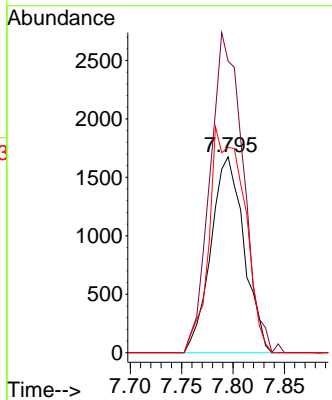
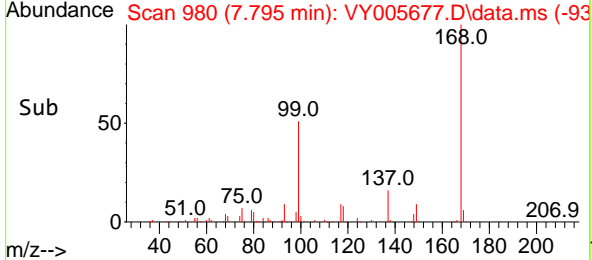
#31  
 Cyclohexane  
 Concen: 1.190 ug/l  
 RT: 7.795 min Scan# 980  
 Delta R.T. 0.000 min  
 Lab File: VY005677.D  
 Acq: 16 Aug 2021 17:51

**Instrument :**  
 MSVOA\_Y  
**ClientSampled :**  
 CRT-21

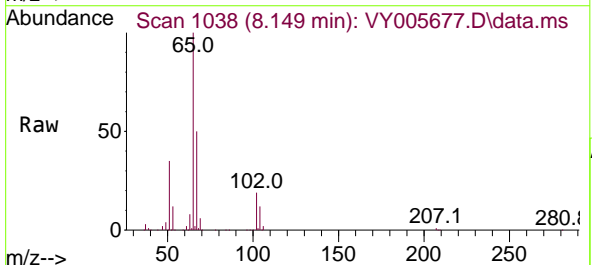


Tgt Ion: 56 Resp: 3751

Ion	Ratio	Lower	Upper
56	100		
69	148.9	27.7	41.5#
84	117.5	70.9	106.3#

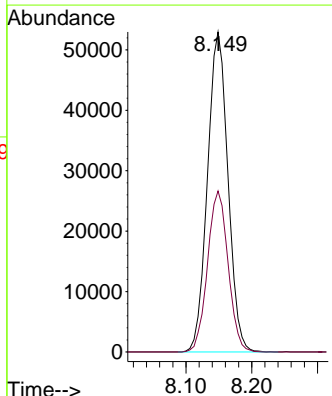
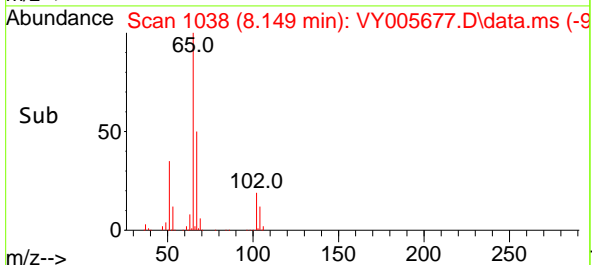


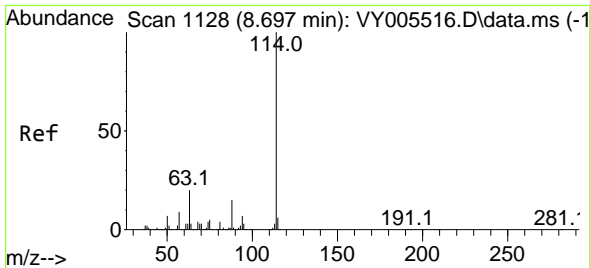
#33  
 1,2-Dichloroethane-d4  
 Concen: 62.359 ug/l  
 RT: 8.149 min Scan# 1038  
 Delta R.T. -0.000 min  
 Lab File: VY005677.D  
 Acq: 16 Aug 2021 17:51



Tgt Ion: 65 Resp: 114634

Ion	Ratio	Lower	Upper
65	100		
67	50.6	0.0	103.4



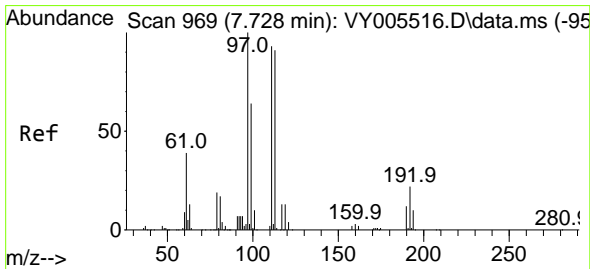
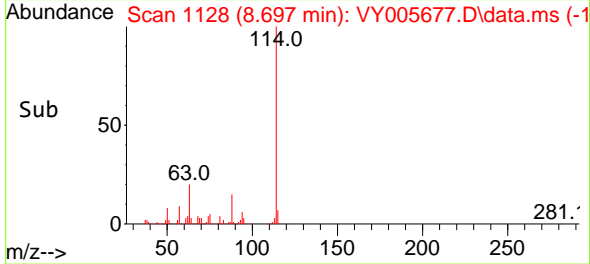
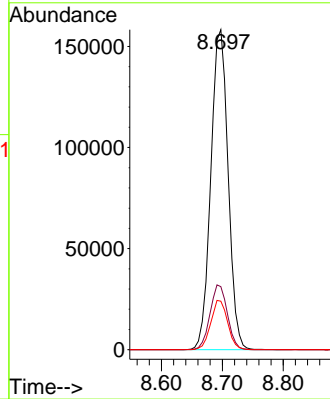
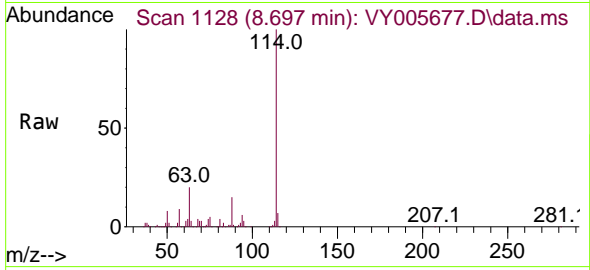


#34  
 1,4-Difluorobenzene  
 Concen: 50.000 ug/l  
 RT: 8.697 min Scan# 1128  
 Delta R.T. -0.000 min  
 Lab File: VY005677.D  
 Acq: 16 Aug 2021 17:51

Instrument :  
 MSVOA\_Y  
 ClientSampled :  
 CRT-21

Tgt Ion:114 Resp: 311623

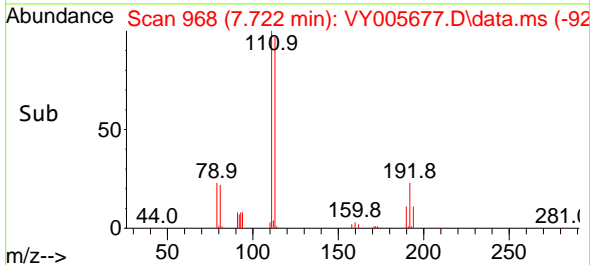
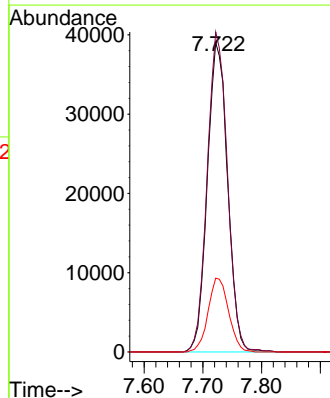
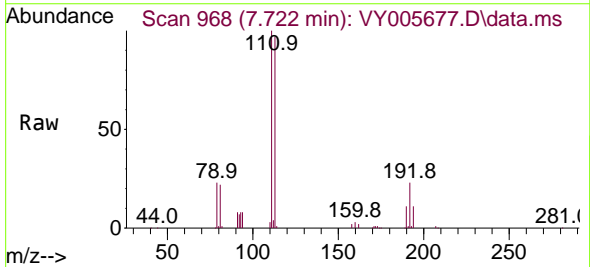
Ion	Ratio	Lower	Upper
114	100		
63	19.7	0.0	39.2
88	15.2	0.0	30.8

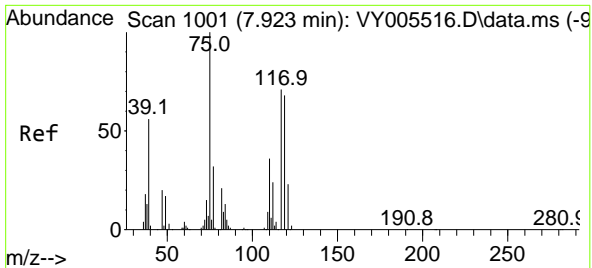


#35  
 Dibromofluoromethane  
 Concen: 53.715 ug/l  
 RT: 7.722 min Scan# 968  
 Delta R.T. -0.006 min  
 Lab File: VY005677.D  
 Acq: 16 Aug 2021 17:51

Tgt Ion:113 Resp: 93716

Ion	Ratio	Lower	Upper
113	100		
111	103.2	81.9	122.9
192	24.1	19.2	28.8

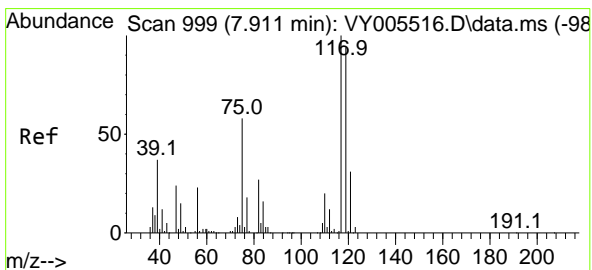
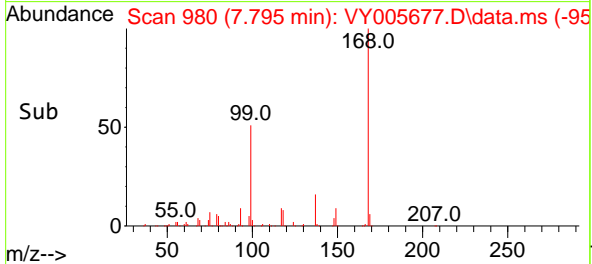
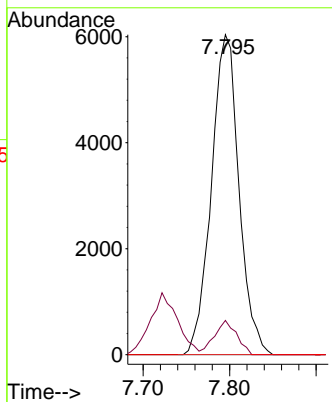
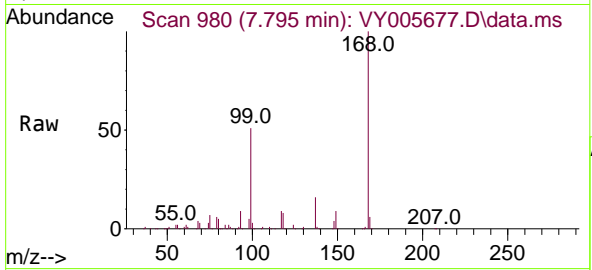




#36  
 1,1-Dichloropropene  
 Concen: 4.573 ug/l  
 RT: 7.795 min Scan# 980  
 Delta R.T. -0.128 min  
 Lab File: VY005677.D  
 Acq: 16 Aug 2021 17:51

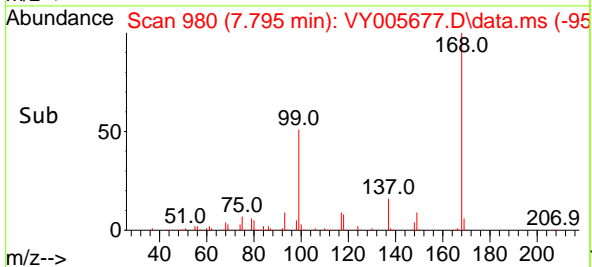
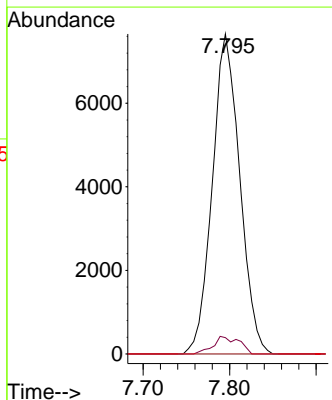
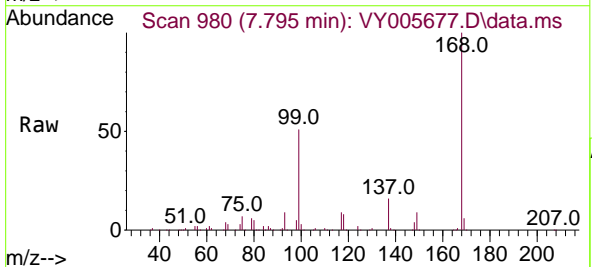
Instrument :  
 MSVOA\_Y  
 ClientSampled :  
 CRT-21

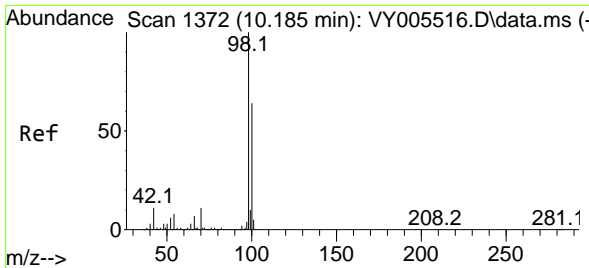
Tgt Ion	Resp	Lower	Upper
75	13367		
75	100		
110	8.6	18.1	54.1#
77	0.0	25.1	37.7#



#38  
 Carbon Tetrachloride  
 Concen: 5.303 ug/l  
 RT: 7.795 min Scan# 980  
 Delta R.T. -0.116 min  
 Lab File: VY005677.D  
 Acq: 16 Aug 2021 17:51

Tgt Ion	Resp	Lower	Upper
117	16847		
117	100		
119	5.1	75.4	113.0#
121	0.0	25.1	37.7#

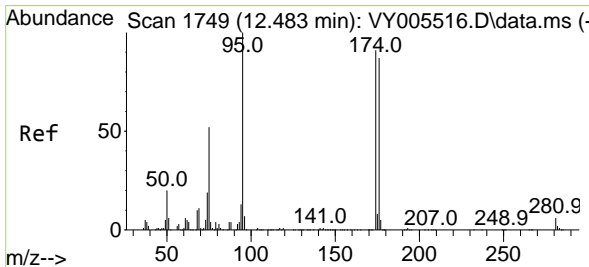
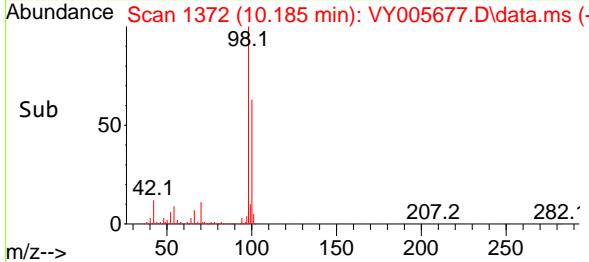
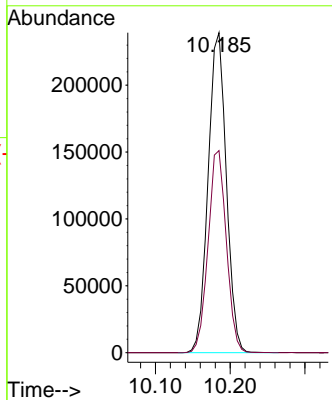
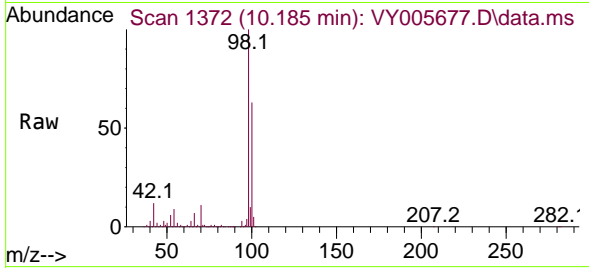




#50  
 Toluene-d8  
 Concen: 55.229 ug/l  
 RT: 10.185 min Scan# 1372  
 Delta R.T. -0.000 min  
 Lab File: VY005677.D  
 Acq: 16 Aug 2021 17:51

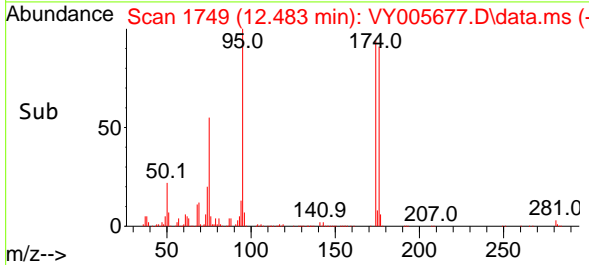
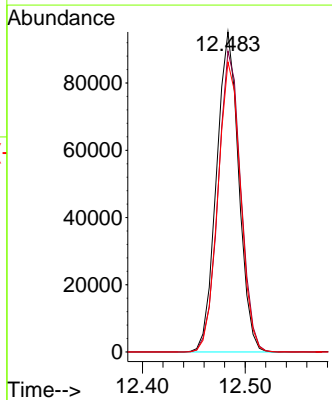
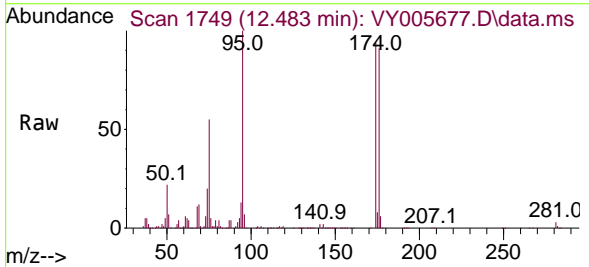
Instrument :  
 MSVOA\_Y  
 ClientSampled :  
 CRT-21

Tgt Ion: 98 Resp: 404122  
 Ion Ratio Lower Upper  
 98 100  
 100 63.3 51.3 76.9

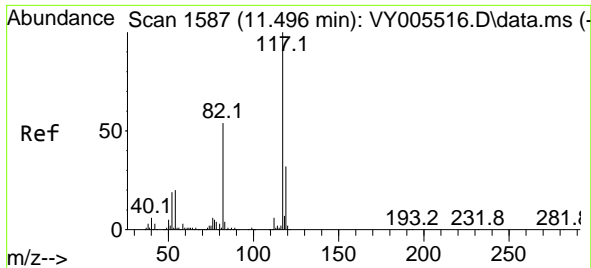


#62  
 4-Bromofluorobenzene  
 Concen: 59.030 ug/l  
 RT: 12.483 min Scan# 1749  
 Delta R.T. -0.000 min  
 Lab File: VY005677.D  
 Acq: 16 Aug 2021 17:51

Tgt Ion: 95 Resp: 143035  
 Ion Ratio Lower Upper  
 95 100  
 174 95.1 0.0 191.4  
 176 92.2 0.0 183.6





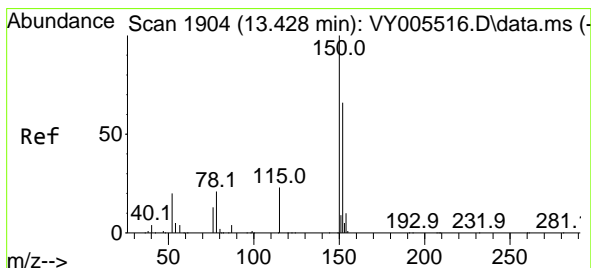
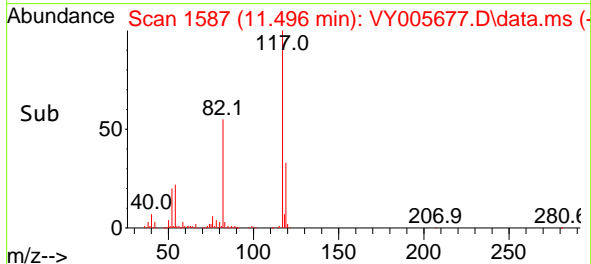
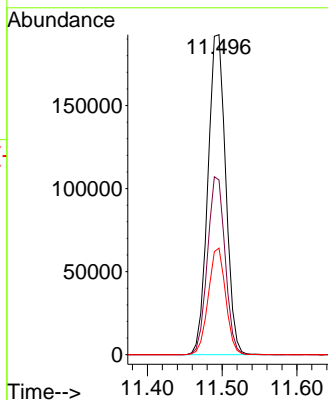
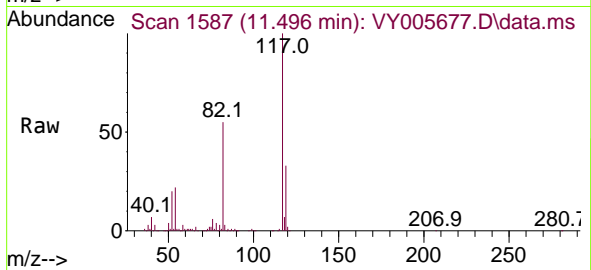


#63  
 Chlorobenzene-d5  
 Concen: 50.000 ug/l  
 RT: 11.496 min Scan# 1587  
 Delta R.T. 0.000 min  
 Lab File: VY005677.D  
 Acq: 16 Aug 2021 17:51

Instrument :  
 MSVOA\_Y  
 ClientSampled :  
 CRT-21

Tgt Ion:117 Resp: 319256

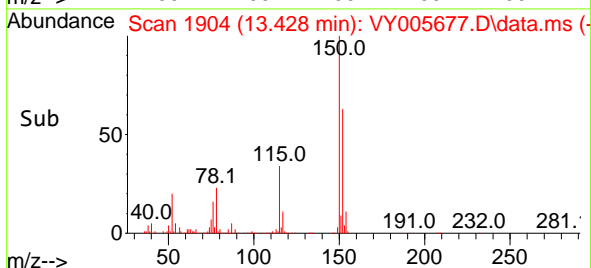
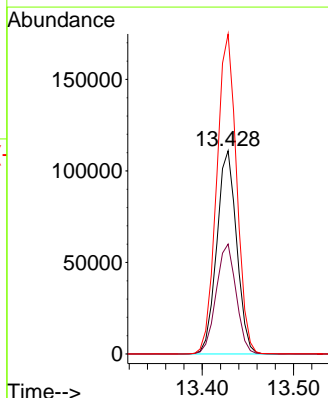
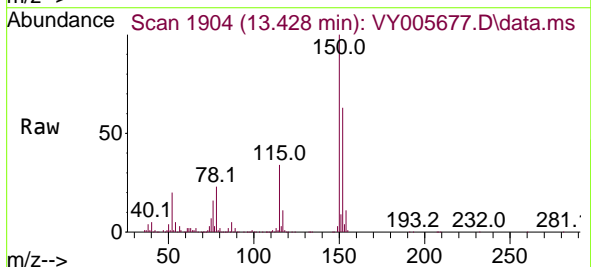
Ion	Ratio	Lower	Upper
117	100		
82	54.6	43.5	65.3
119	33.3	25.5	38.3

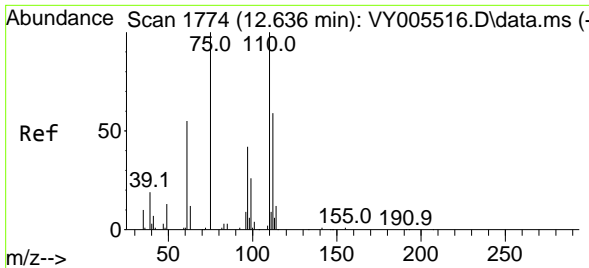


#72  
 1,4-Dichlorobenzene-d4  
 Concen: 50.000 ug/l  
 RT: 13.428 min Scan# 1904  
 Delta R.T. 0.000 min  
 Lab File: VY005677.D  
 Acq: 16 Aug 2021 17:51

Tgt Ion:152 Resp: 167796

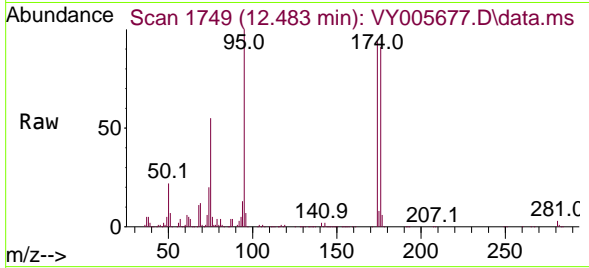
Ion	Ratio	Lower	Upper
152	100		
115	54.5	27.3	81.9
150	158.0	0.0	350.2



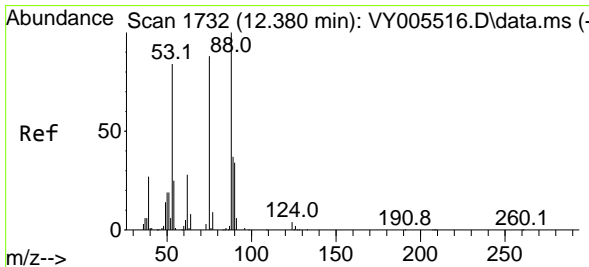
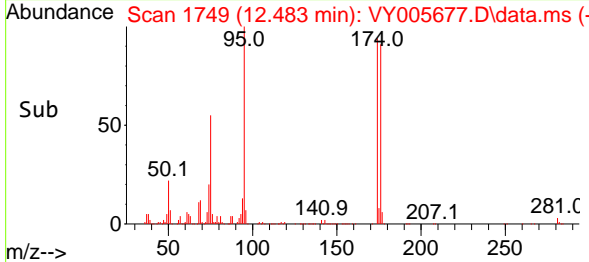
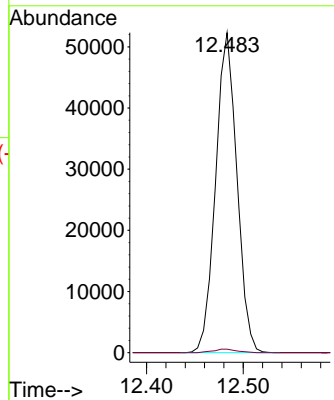


#76  
 1,2,3-Trichloropropane  
 Concen: 45.894 ug/l  
 RT: 12.483 min Scan# 1749  
 Delta R.T. -0.152 min  
 Lab File: VY005677.D  
 Acq: 16 Aug 2021 17:51

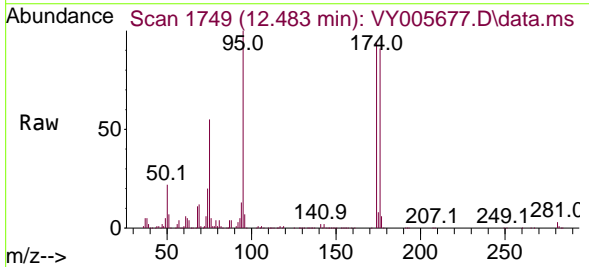
Instrument :  
 MSVOA\_Y  
 ClientSampled :  
 CRT-21



Tgt Ion: 75 Resp: 79802  
 Ion Ratio Lower Upper  
 75 100  
 77 1.2 0.0 0.0#



#81  
 trans-1,4-Dichloro-2-butene  
 Concen: 92.515 ug/l  
 RT: 12.483 min Scan# 1749  
 Delta R.T. 0.104 min  
 Lab File: VY005677.D  
 Acq: 16 Aug 2021 17:51



Tgt Ion: 75 Resp: 79802  
 Ion Ratio Lower Upper  
 75 100  
 53 0.0 76.7 115.1#  
 89 0.0 38.4 57.6#

