

Data Path : Z:\voasrv\HPCHEM1\MSVOA_Y\Data\VY081623\
 Data File : VY015149.D
 Acq On : 16 Aug 2023 14:54
 Operator : SY/MD
 Sample : 04017-03RE
 Misc : 5.02g/5.0mL/MSVOA_Y/SOIL
 ALS Vial : 16 Sample Multiplier: 1

Instrument :
 MSVOA_Y
 ClientSampleId :

Quant Time: Aug 17 05:29:52 2023
 Quant Method : Z:\voasrv\HPCHEM1\MSVOA_Y\methods\82Y081423S.M
 Quant Title : SW846 8260
 QLast Update : Mon Aug 14 12:43:26 2023
 Response via : Initial Calibration

Compound	R.T.	QIon	Response	Conc	Units	Dev(Min)

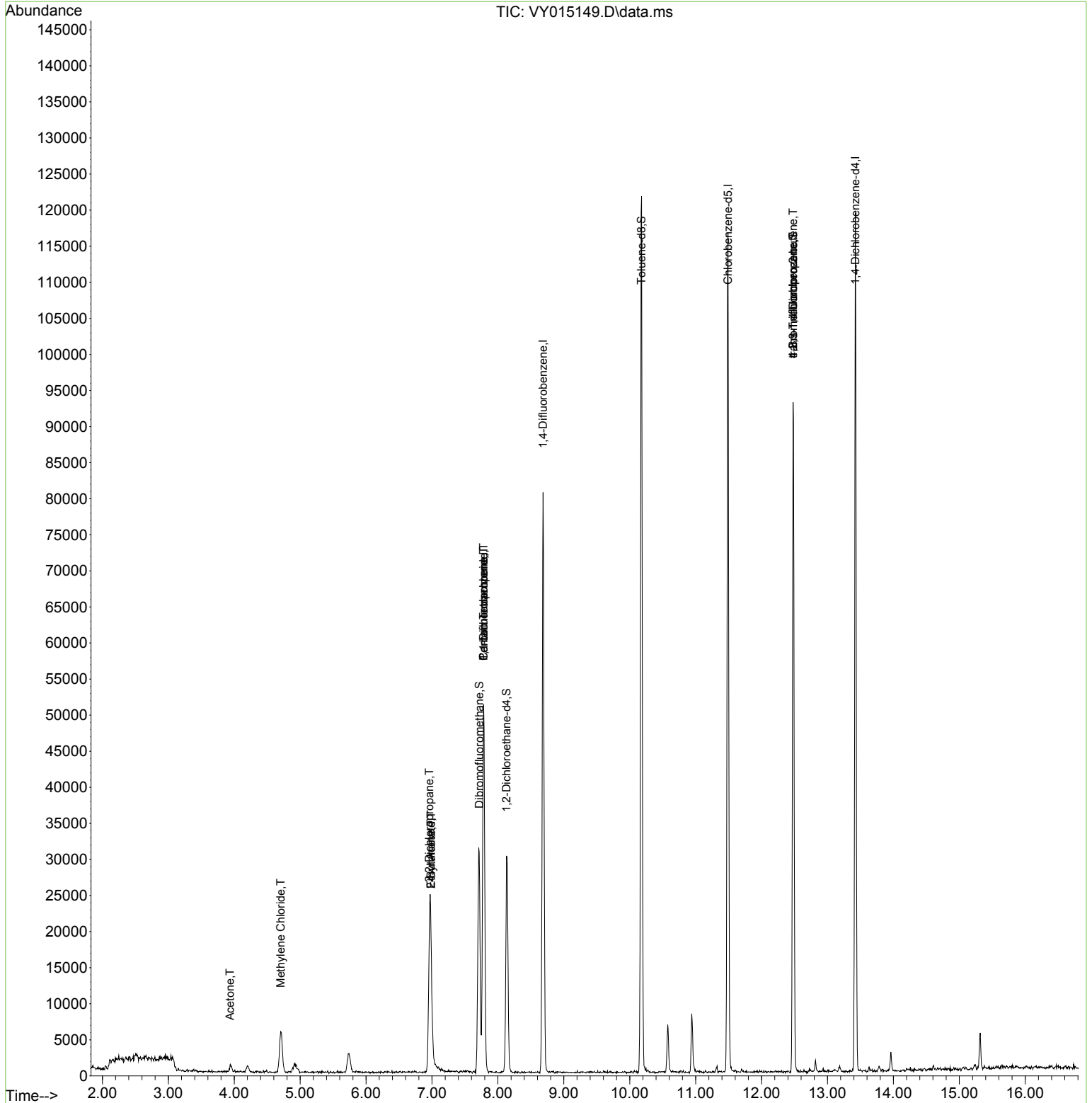
Internal Standards						
1) Pentafluorobenzene	7.783	168	40412	50.000	ug/l	0.00
34) 1,4-Difluorobenzene	8.685	114	67846	50.000	ug/l	0.00
63) Chlorobenzene-d5	11.490	117	65255	50.000	ug/l	0.00
72) 1,4-Dichlorobenzene-d4	13.422	152	29481	50.000	ug/l	0.00
System Monitoring Compounds						
33) 1,2-Dichloroethane-d4	8.130	65	24057	49.591	ug/l	0.00
Spiked Amount	50.000	Range	50 - 163	Recovery	=	99.180%
35) Dibromofluoromethane	7.716	113	22647	51.886	ug/l	0.00
Spiked Amount	50.000	Range	54 - 147	Recovery	=	103.780%
50) Toluene-d8	10.179	98	80306	49.425	ug/l	0.00
Spiked Amount	50.000	Range	58 - 134	Recovery	=	98.840%
62) 4-Bromofluorobenzene	12.477	95	26769	45.107	ug/l	0.00
Spiked Amount	50.000	Range	30 - 143	Recovery	=	90.220%
Target Compounds						
					Qvalue	
3) Chloromethane	2.107	50	190	Below Cal	#	43
5) Bromomethane	2.650	94	183	Below Cal	#	63
11) Tert butyl alcohol	4.912	59	714	Below Cal	#	89
16) Acetone	3.936	43	1949	12.298	ug/l #	88
20) Methylene Chloride	4.704	84	4256	7.531	ug/l	90
25) 2-Butanone	6.984	43	1545	6.885	ug/l #	78
26) 2,2-Dichloropropane	6.960	77	1988	3.062	ug/l #	54
31) Cyclohexane	7.777	56	986	Below Cal	#	48
36) 1,1-Dichloropropene	7.783	75	3483	7.213	ug/l #	49
37) Ethyl Acetate	6.984	43	1545	3.433	ug/l #	4
38) Carbon Tetrachloride	7.783	117	3815	6.676	ug/l #	16
76) 1,2,3-Trichloropropane	12.477	75	15009	41.904	ug/l #	100
81) trans-1,4-Dichloro-2-b...	12.477	75	15009	92.042	ug/l #	10

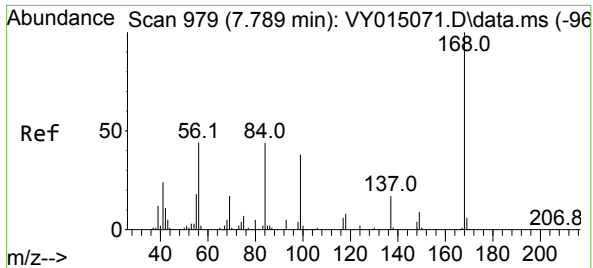
(#) = qualifier out of range (m) = manual integration (+) = signals summed

Data Path : Z:\voasrv\HPCHEM1\MSVOA_Y\Data\VY081623\
 Data File : VY015149.D
 Acq On : 16 Aug 2023 14:54
 Operator : SY/MD
 Sample : 04017-03RE
 Misc : 5.02g/5.0mL/MSVOA_Y/SOIL
 ALS Vial : 16 Sample Multiplier: 1

Instrument :
 MSVOA_Y
 ClientSampleId :

Quant Time: Aug 17 05:29:52 2023
 Quant Method : Z:\voasrv\HPCHEM1\MSVOA_Y\methods\82Y081423S.M
 Quant Title : SW846 8260
 QLast Update : Mon Aug 14 12:43:26 2023
 Response via : Initial Calibration

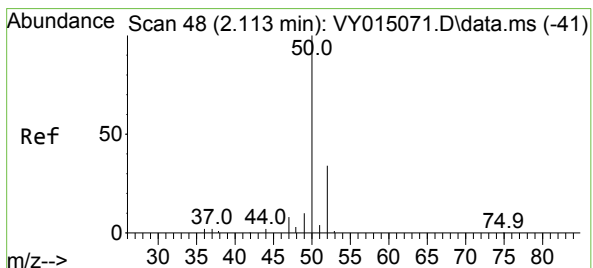
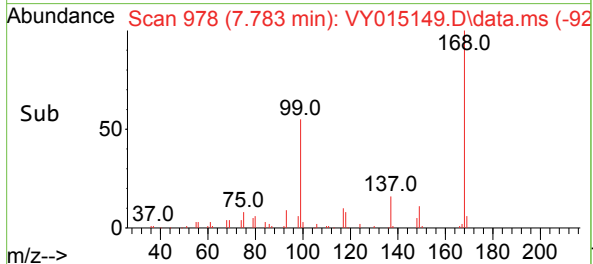
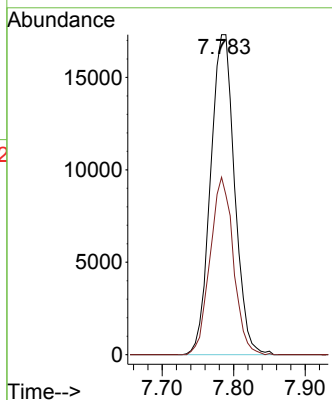
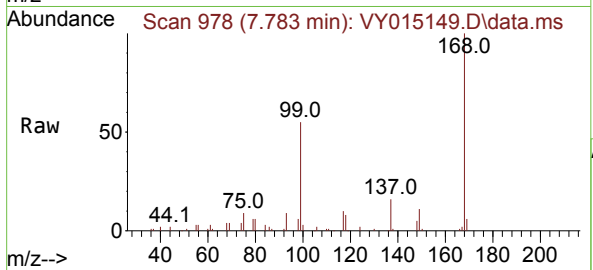




#1
 Pentafluorobenzene
 Concen: 50.000 ug/l
 RT: 7.783 min Scan# 91
 Delta R.T. -0.000 min
 Lab File: VY015149.D
 Acq: 16 Aug 2023 14:54

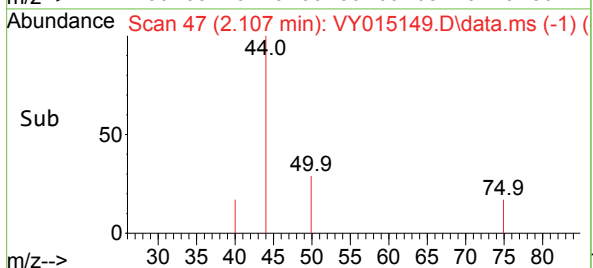
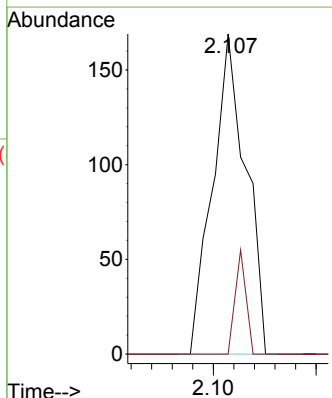
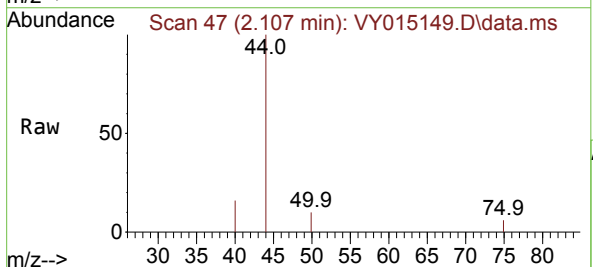
Instrument :
 MSVOA_Y
 ClientSampleId :

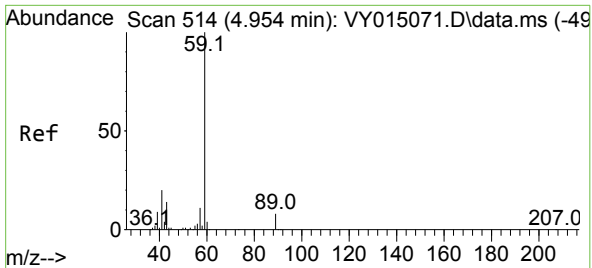
Tgt Ion:168 Resp: 40412
 Ion Ratio Lower Upper
 168 100
 99 55.4 43.4 65.0



#3
 Chloromethane
 Concen: Below Cal
 RT: 2.107 min Scan# 47
 Delta R.T. 0.000 min
 Lab File: VY015149.D
 Acq: 16 Aug 2023 14:54

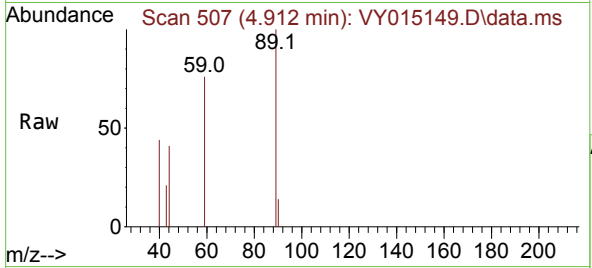
Tgt Ion: 50 Resp: 190
 Ion Ratio Lower Upper
 50 100
 52 0.0 25.4 38.2#



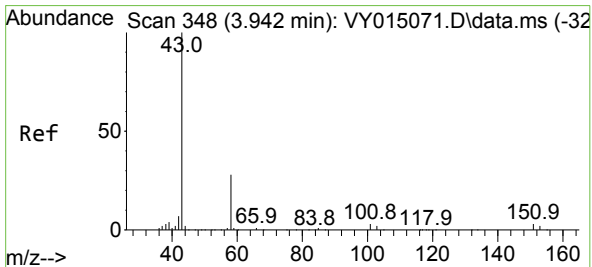
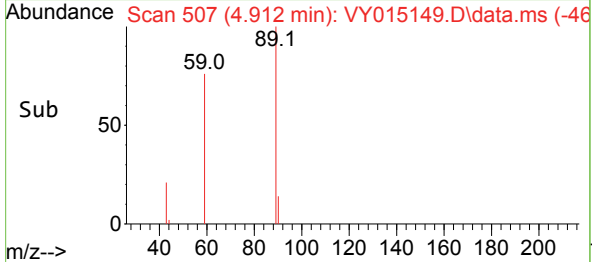
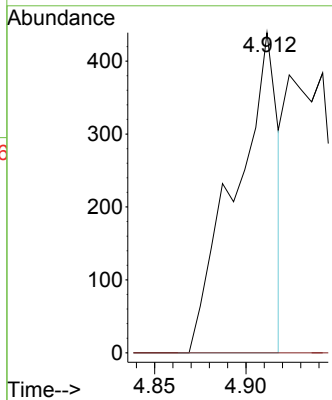


#11
 Tert butyl alcohol
 Concen: Below Cal
 RT: 4.912 min Scan# 50
 Delta R.T. -0.036 min
 Lab File: VY015149.D
 Acq: 16 Aug 2023 14:54

Instrument : MSVOA_Y
 ClientSampleId :

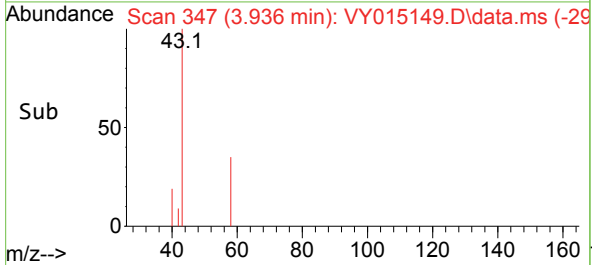
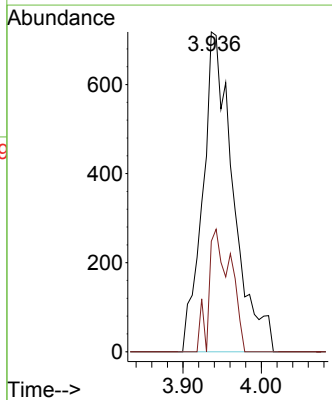
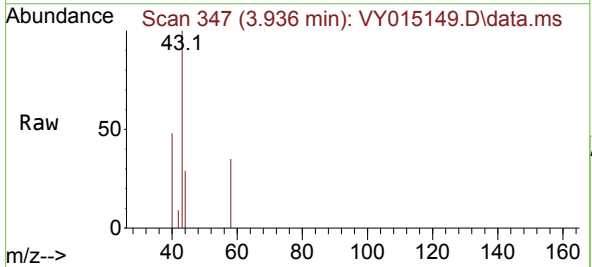


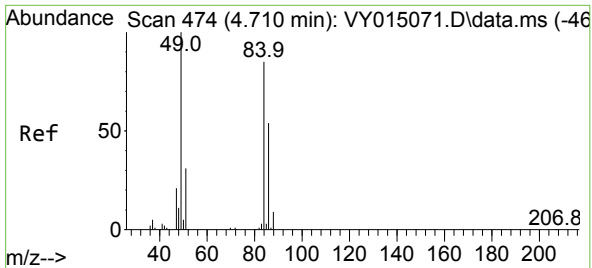
Tgt Ion: 59 Resp: 714
 Ion Ratio Lower Upper
 59 100
 57 0.0 3.0 4.4#



#16
 Acetone
 Concen: 12.298 ug/l
 RT: 3.936 min Scan# 347
 Delta R.T. -0.006 min
 Lab File: VY015149.D
 Acq: 16 Aug 2023 14:54

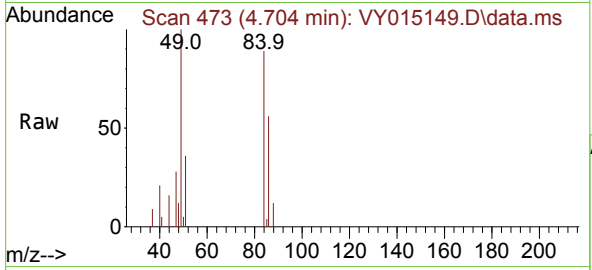
Tgt Ion: 43 Resp: 1949
 Ion Ratio Lower Upper
 43 100
 58 34.5 22.7 34.1#



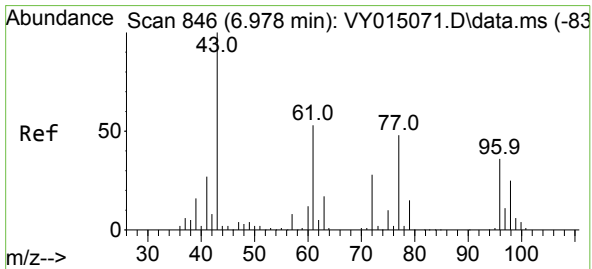
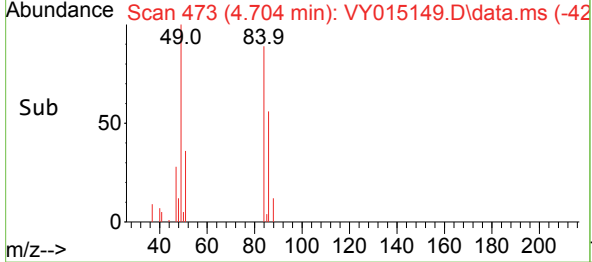
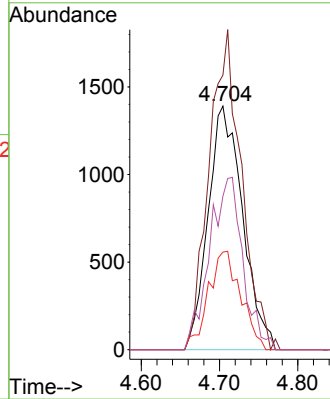


#20
 Methylene Chloride
 Concen: 7.531 ug/l
 RT: 4.704 min Scan# 41
 Delta R.T. -0.006 min
 Lab File: VY015149.D
 Acq: 16 Aug 2023 14:54

Instrument :
 MSVOA_Y
 ClientSampleId :

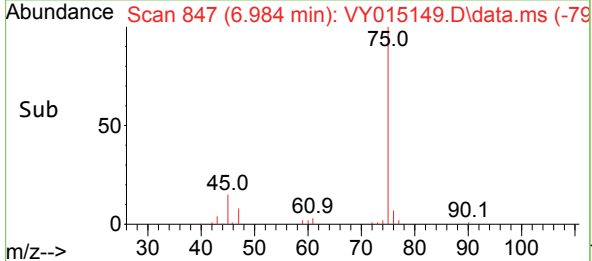
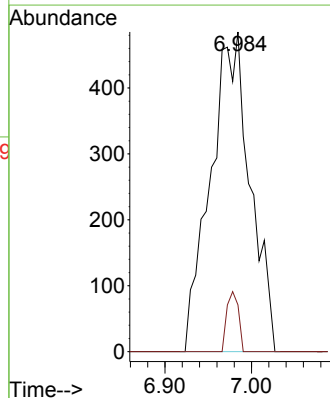
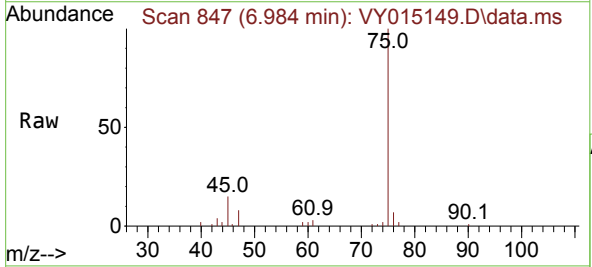


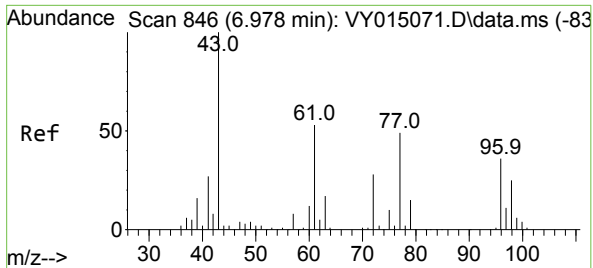
Tgt Ion: 84 Resp: 4256
 Ion Ratio Lower Upper
 84 100
 49 112.8 106.9 160.3
 51 40.1 33.2 49.8
 86 63.0 51.0 76.6



#25
 2-Butanone
 Concen: 6.885 ug/l
 RT: 6.984 min Scan# 847
 Delta R.T. 0.006 min
 Lab File: VY015149.D
 Acq: 16 Aug 2023 14:54

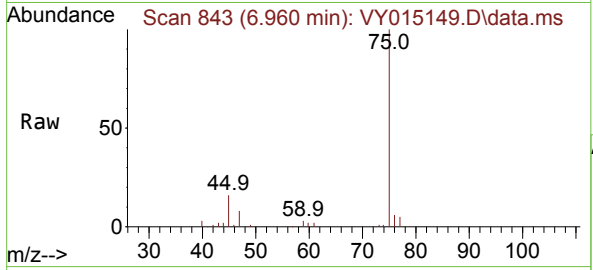
Tgt Ion: 43 Resp: 1545
 Ion Ratio Lower Upper
 43 100
 72 14.6 20.5 30.7#



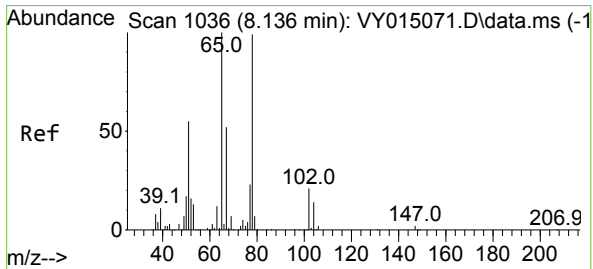
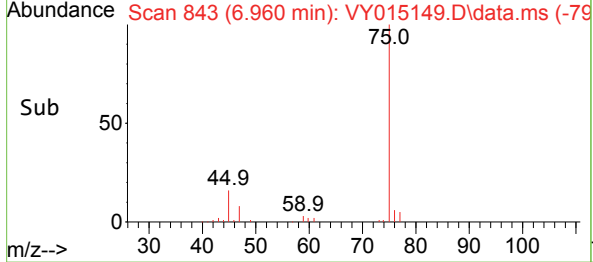
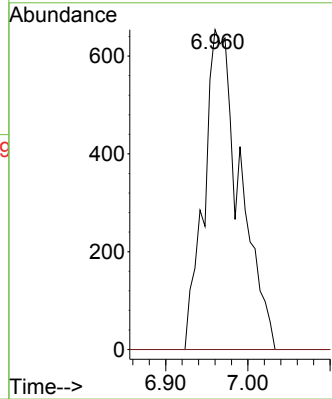


#26
 2,2-Dichloropropane
 Concen: 3.062 ug/l
 RT: 6.960 min Scan# 84
 Delta R.T. -0.012 min
 Lab File: VY015149.D
 Acq: 16 Aug 2023 14:54

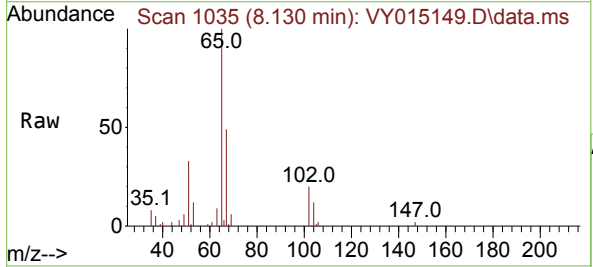
Instrument :
 MSVOA_Y
 ClientSampleId :



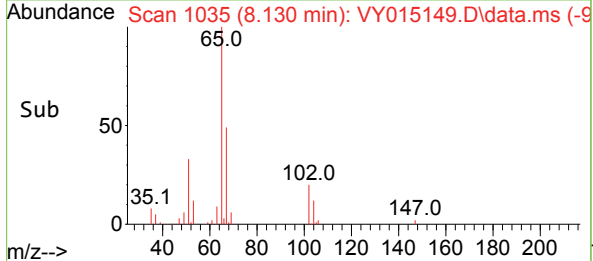
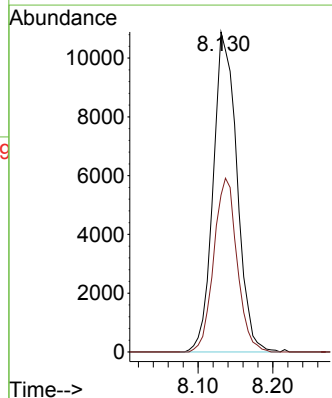
Tgt Ion: 77 Resp: 1988
 Ion Ratio Lower Upper
 77 100
 97 0.0 10.9 32.9#

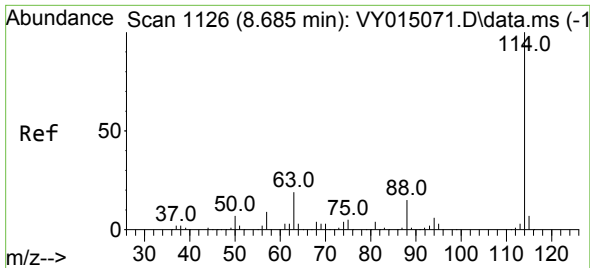


#33
 1,2-Dichloroethane-d4
 Concen: 49.591 ug/l
 RT: 8.130 min Scan# 1035
 Delta R.T. -0.006 min
 Lab File: VY015149.D
 Acq: 16 Aug 2023 14:54



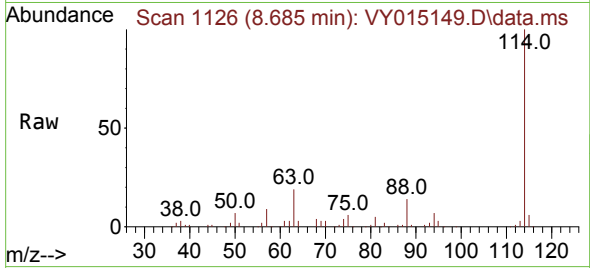
Tgt Ion: 65 Resp: 24057
 Ion Ratio Lower Upper
 65 100
 67 53.3 0.0 101.8



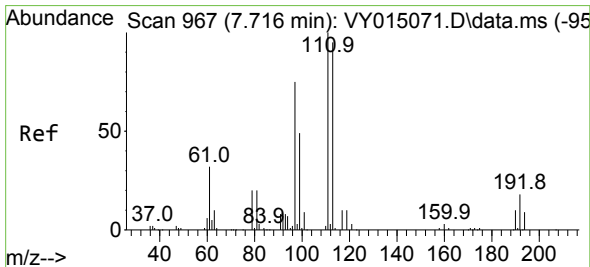
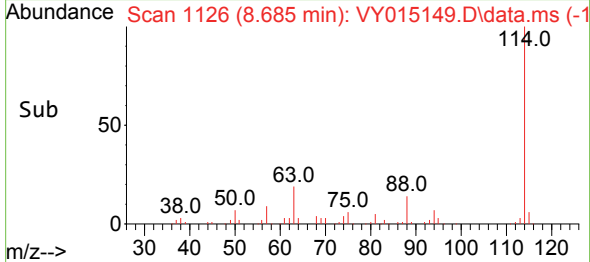
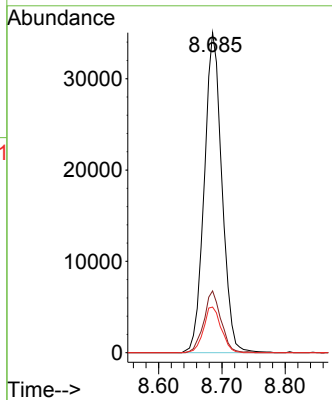


#34
 1,4-Difluorobenzene
 Concen: 50.000 ug/l
 RT: 8.685 min Scan# 1126
 Delta R.T. 0.000 min
 Lab File: VY015149.D
 Acq: 16 Aug 2023 14:54

Instrument :
 MSVOA_Y
 ClientSampleId :

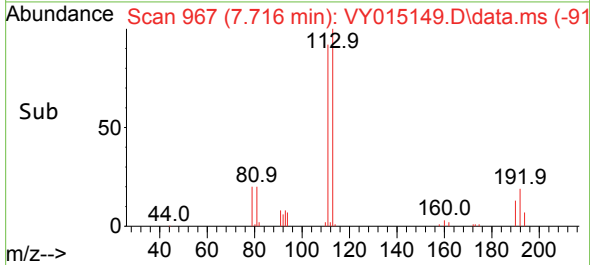
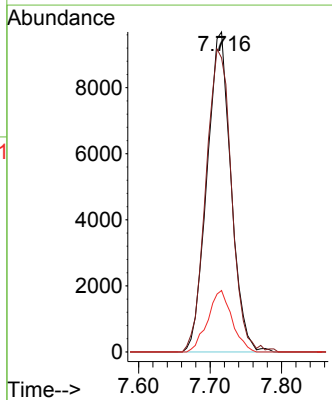
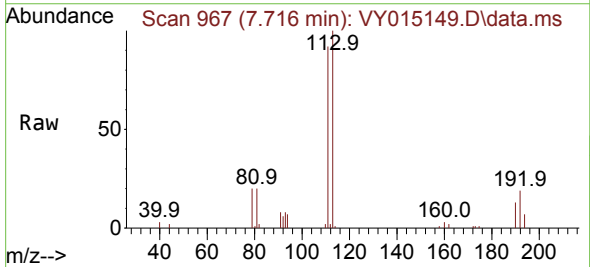


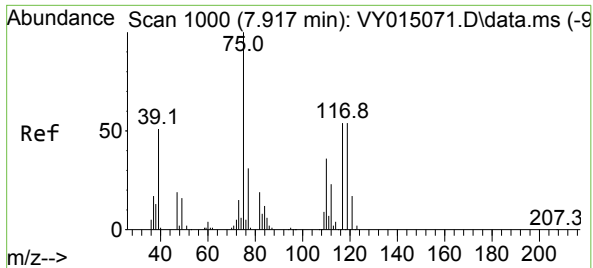
Tgt Ion:114 Resp: 67846
 Ion Ratio Lower Upper
 114 100
 63 19.3 0.0 42.4
 88 14.2 0.0 30.6



#35
 Dibromofluoromethane
 Concen: 51.886 ug/l
 RT: 7.716 min Scan# 967
 Delta R.T. 0.000 min
 Lab File: VY015149.D
 Acq: 16 Aug 2023 14:54

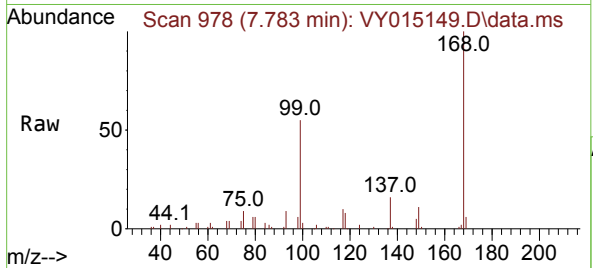
Tgt Ion:113 Resp: 22647
 Ion Ratio Lower Upper
 113 100
 111 100.4 81.3 121.9
 192 19.3 16.9 25.3



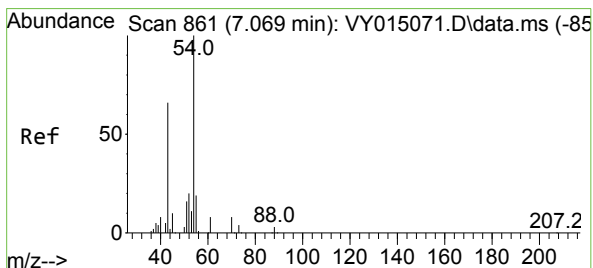
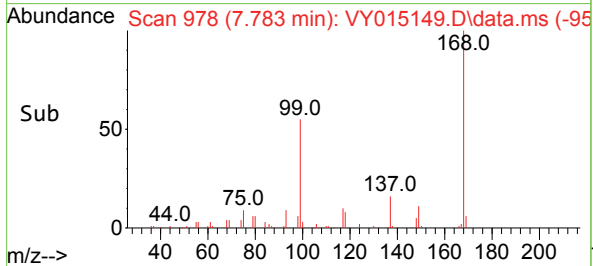
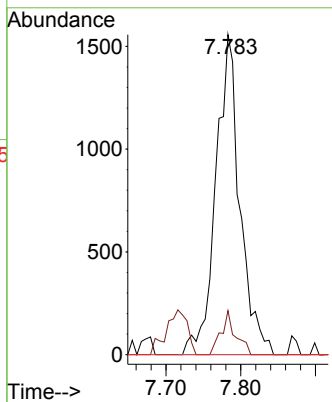


#36
 1,1-Dichloropropene
 Concen: 7.213 ug/l
 RT: 7.783 min Scan# 91
 Delta R.T. -0.128 min
 Lab File: VY015149.D
 Acq: 16 Aug 2023 14:54

Instrument : MSVOA_Y
 ClientSampleId :

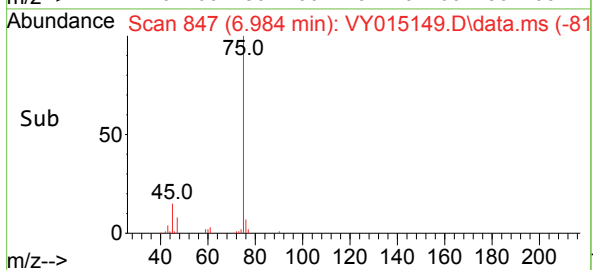
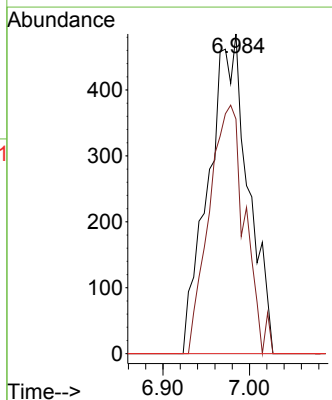
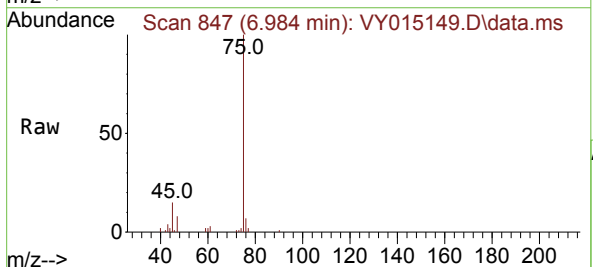


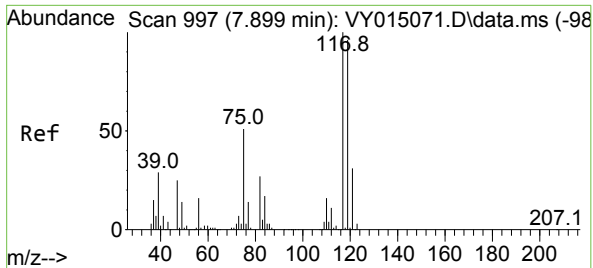
Tgt Ion: 75 Resp: 3483
 Ion Ratio Lower Upper
 75 100
 110 8.2 17.8 53.5#
 77 0.0 24.4 36.6#



#37
 Ethyl Acetate
 Concen: 3.433 ug/l
 RT: 6.984 min Scan# 847
 Delta R.T. -0.085 min
 Lab File: VY015149.D
 Acq: 16 Aug 2023 14:54

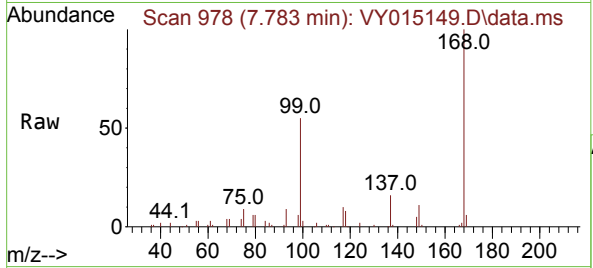
Tgt Ion: 43 Resp: 1545
 Ion Ratio Lower Upper
 43 100
 61 70.3 10.1 15.1#
 70 0.0 7.1 10.7#



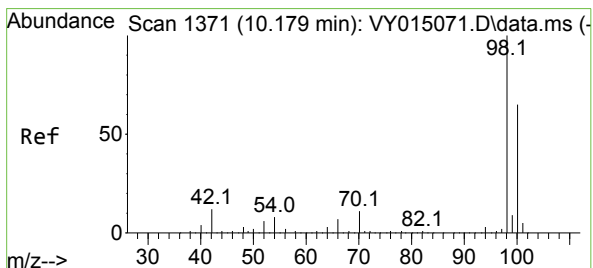
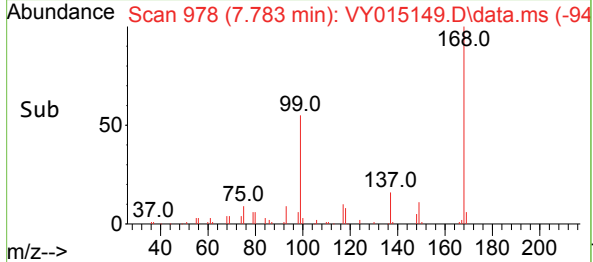
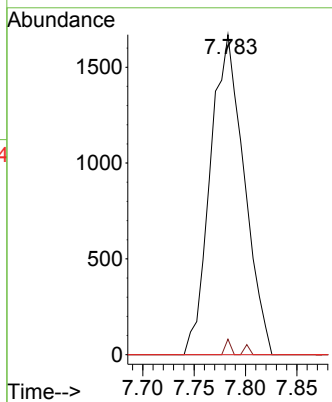


#38
 Carbon Tetrachloride
 Concen: 6.676 ug/l
 RT: 7.783 min Scan# 91
 Delta R.T. -0.116 min
 Lab File: VY015149.D
 Acq: 16 Aug 2023 14:54

Instrument :
 MSVOA_Y
 ClientSampleId :

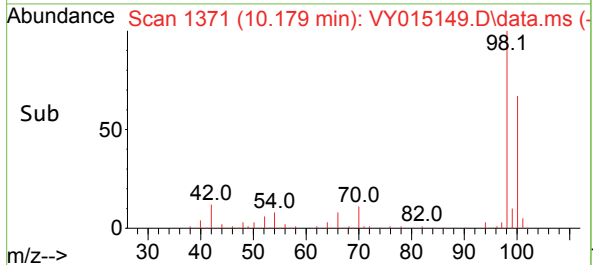
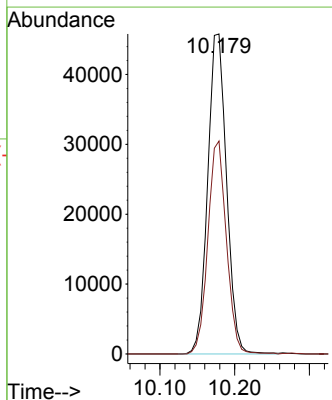
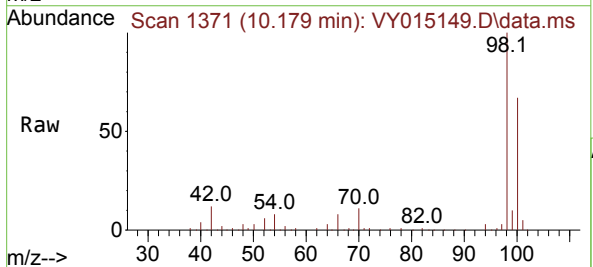


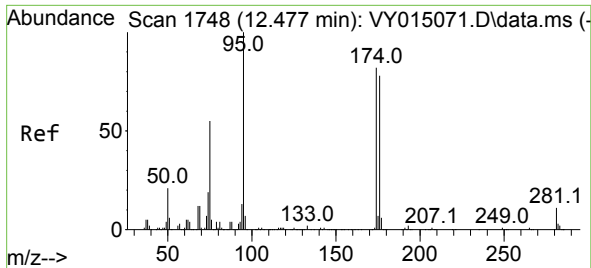
Tgt Ion: 117 Resp: 3815
 Ion Ratio Lower Upper
 117 100
 119 4.9 76.4 114.6#
 121 0.0 25.8 38.6#



#50
 Toluene-d8
 Concen: 49.425 ug/l
 RT: 10.179 min Scan# 1371
 Delta R.T. 0.000 min
 Lab File: VY015149.D
 Acq: 16 Aug 2023 14:54

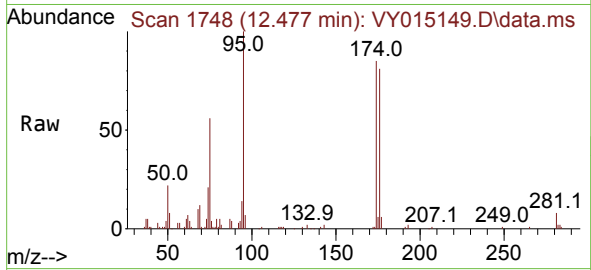
Tgt Ion: 98 Resp: 80306
 Ion Ratio Lower Upper
 98 100
 100 65.3 50.1 75.1



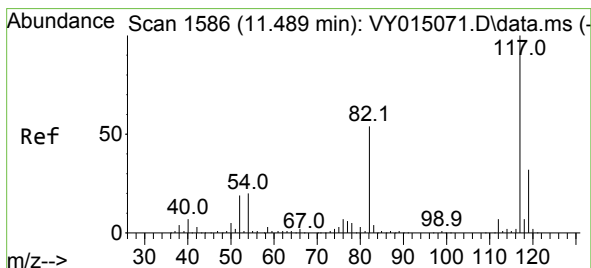
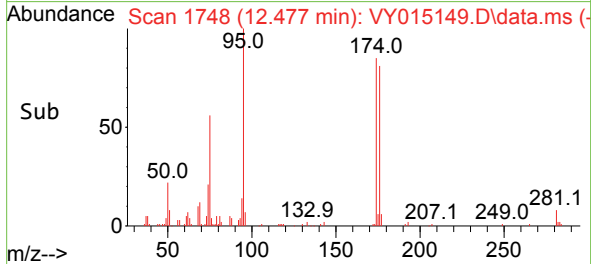
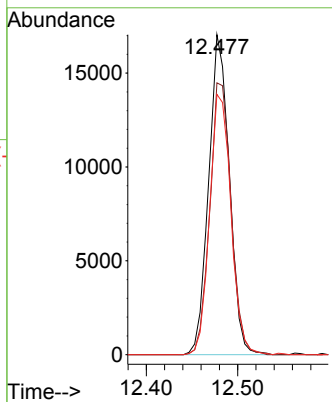


#62
 4-Bromofluorobenzene
 Concen: 45.107 ug/l
 RT: 12.477 min Scan# 1748
 Delta R.T. 0.000 min
 Lab File: VY015149.D
 Acq: 16 Aug 2023 14:54

Instrument :
 MSVOA_Y
 ClientSampleId :

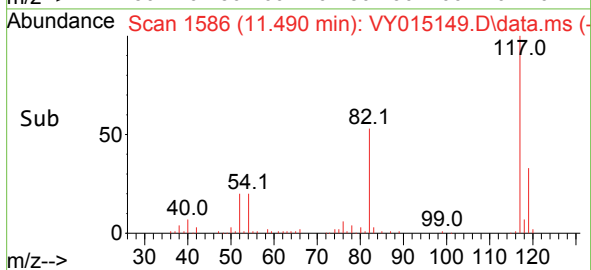
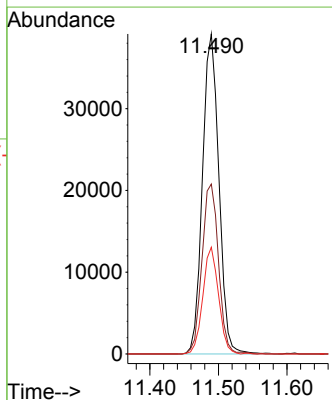
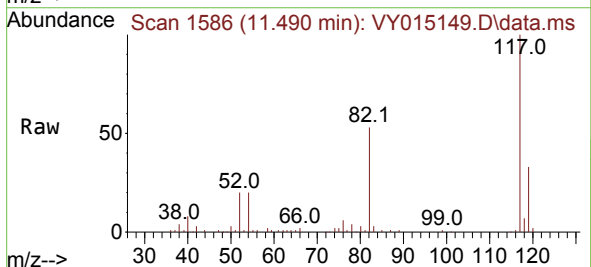


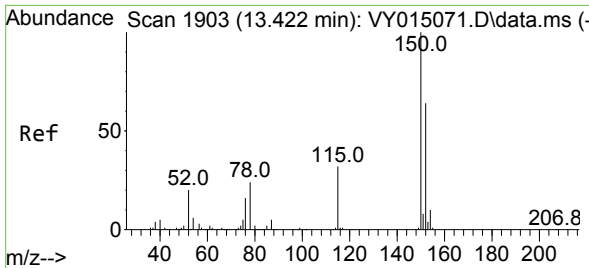
Tgt Ion: 95 Resp: 26769
 Ion Ratio Lower Upper
 95 100
 174 87.8 0.0 178.2
 176 84.1 0.0 173.8



#63
 Chlorobenzene-d5
 Concen: 50.000 ug/l
 RT: 11.490 min Scan# 1586
 Delta R.T. 0.000 min
 Lab File: VY015149.D
 Acq: 16 Aug 2023 14:54

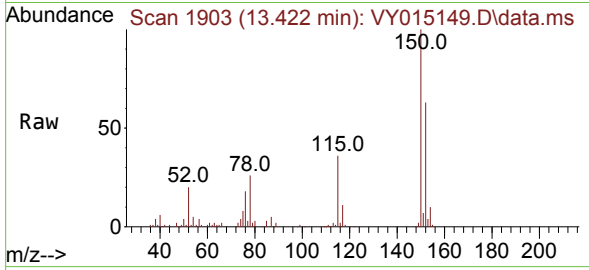
Tgt Ion: 117 Resp: 65255
 Ion Ratio Lower Upper
 117 100
 82 53.1 43.4 65.0
 119 33.3 26.3 39.5



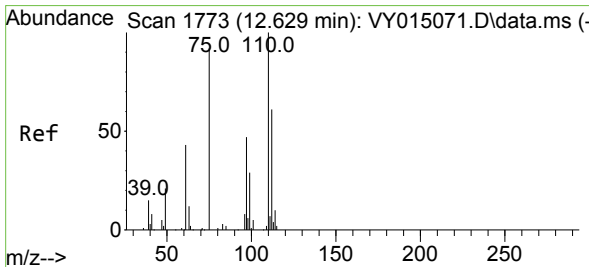
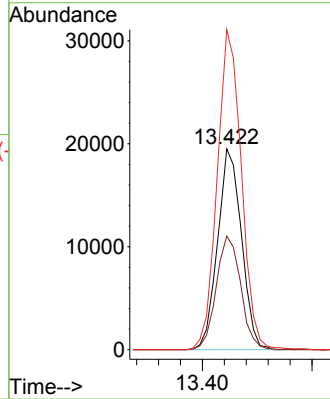
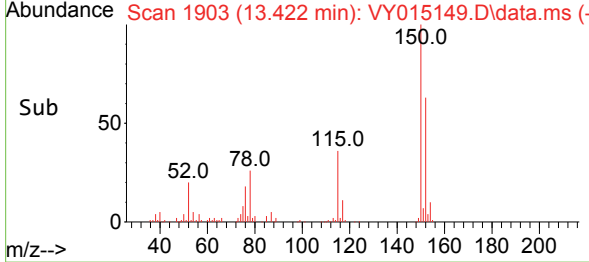


#72
 1,4-Dichlorobenzene-d4
 Concen: 50.000 ug/l
 RT: 13.422 min Scan# 1903
 Delta R.T. 0.000 min
 Lab File: VY015149.D
 Acq: 16 Aug 2023 14:54

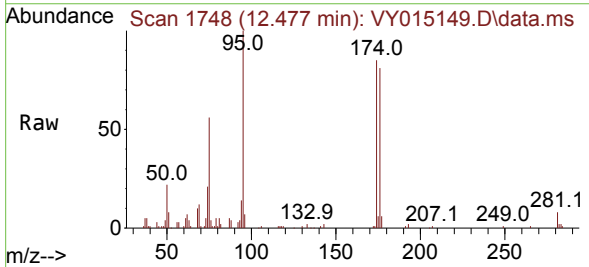
Instrument : MSVOA_Y
 ClientSampleId :



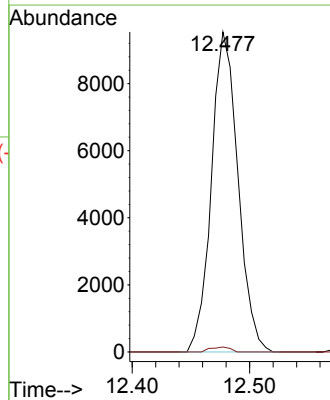
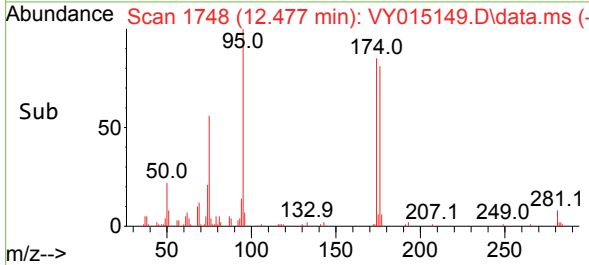
Tgt Ion:152 Resp: 29481
 Ion Ratio Lower Upper
 152 100
 115 58.0 28.8 86.5
 150 161.7 0.0 348.8

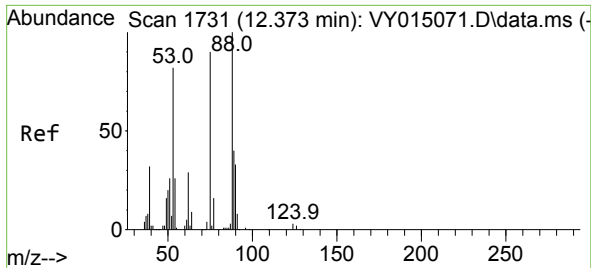


#76
 1,2,3-Trichloropropane
 Concen: 41.904 ug/l
 RT: 12.477 min Scan# 1748
 Delta R.T. -0.152 min
 Lab File: VY015149.D
 Acq: 16 Aug 2023 14:54



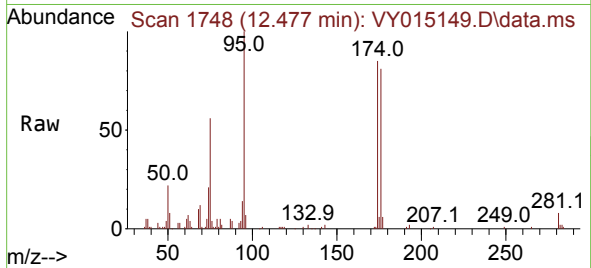
Tgt Ion: 75 Resp: 15009
 Ion Ratio Lower Upper
 75 100
 77 1.2 0.0 0.0#





#81
 trans-1,4-Dichloro-2-butene
 Concen: 92.042 ug/l
 RT: 12.477 min Scan# 11
 Delta R.T. 0.104 min
 Lab File: VY015149.D
 Acq: 16 Aug 2023 14:54

Instrument :
 MSVOA_Y
 ClientSampleId :



Tgt Ion: 75 Resp: 15009

Ion	Ratio	Lower	Upper
75	100		
53	0.0	77.8	116.8#
89	0.0	37.4	56.0#

