

Data Path : Z:\voasrv\HPCHEM1\MSVOA\_Y\Data\VY081921\  
 Data File : VY005772.D  
 Acq On : 19 Aug 2021 16:21  
 Operator : SY/MD  
 Sample : M3414-11  
 Misc : 5.06G/5ML/MSVOA\_Y/SOIL  
 ALS Vial : 19 Sample Multiplier: 1

Instrument :  
 MSVOA\_Y  
 ClientSampled :

Quant Time: Aug 20 06:57:26 2021  
 Quant Method : Z:\voasrv\HPCHEM1\MSVOA\_Y\methods\82Y080221S.M  
 Quant Title : SW846 8260  
 QLast Update : Tue Aug 03 04:52:05 2021  
 Response via : Initial Calibration

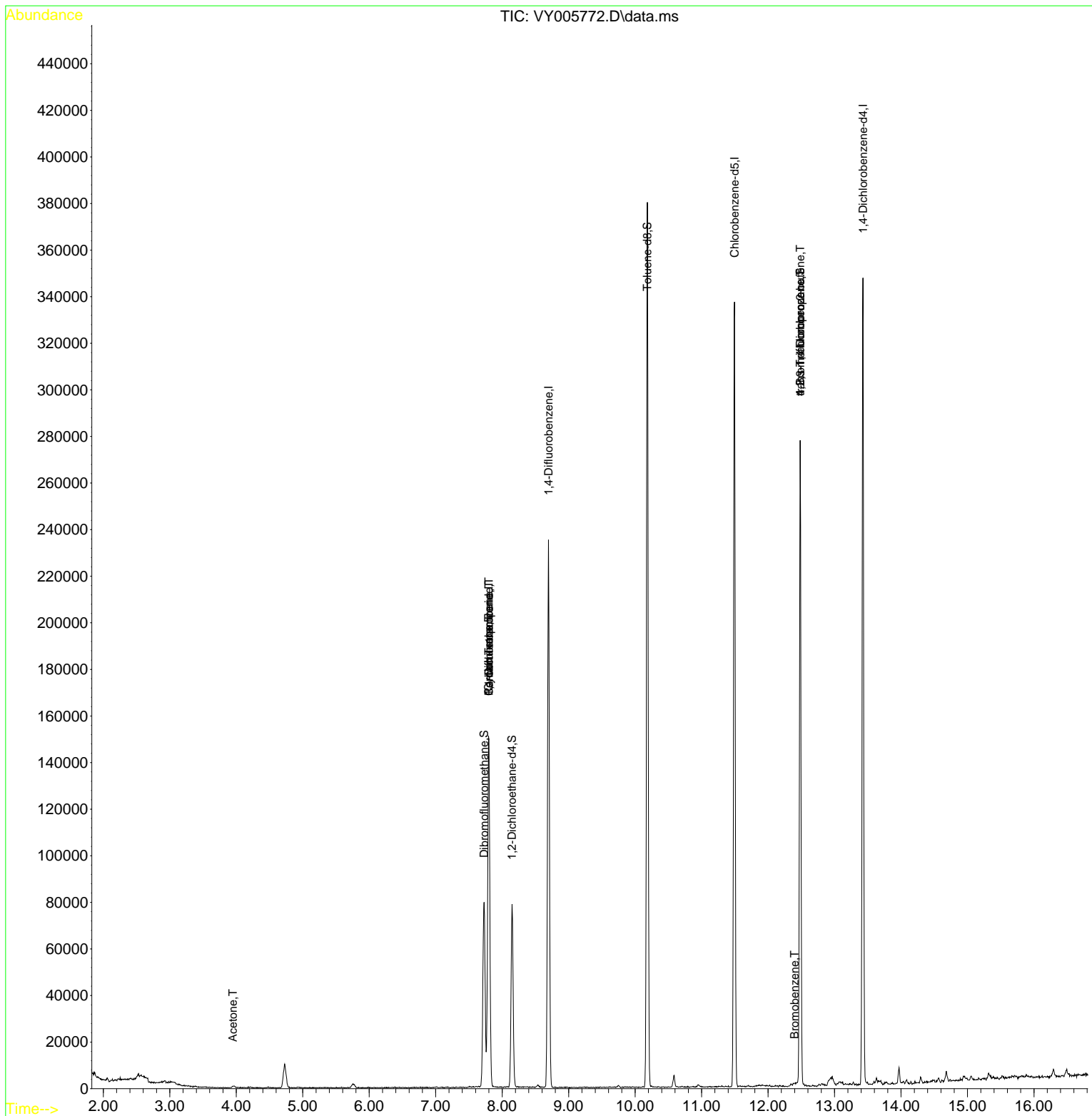
Compound	R.T.	QIon	Response	Conc	Units	Dev(Min)
-----						
Internal Standards						
1) Pentafluorobenzene	7.801	168	122734	50.000	ug/l	0.00
34) 1,4-Difluorobenzene	8.697	114	192689	50.000	ug/l	0.00
63) Chlorobenzene-d5	11.496	117	181828	50.000	ug/l	0.00
72) 1,4-Dichlorobenzene-d4	13.428	152	89657	50.000	ug/l	0.00
System Monitoring Compounds						
33) 1,2-Dichloroethane-d4	8.149	65	62547	50.345	ug/l	0.00
Spiked Amount	50.000	Range	50 - 163	Recovery	=	100.680%
35) Dibromofluoromethane	7.728	113	54736	50.737	ug/l	0.00
Spiked Amount	50.000	Range	54 - 147	Recovery	=	101.480%
50) Toluene-d8	10.185	98	241895	53.463	ug/l	0.00
Spiked Amount	50.000	Range	49 - 140	Recovery	=	106.920%
62) 4-Bromofluorobenzene	12.483	95	76908	51.331	ug/l	0.00
Spiked Amount	50.000	Range	25 - 144	Recovery	=	102.660%
Target Compounds						
					Qvalue	
16) Acetone	3.948	43	1157	3.694	ug/l #	77
20) Methylene Chloride	4.722	84	7356	Below Cal		87
31) Cyclohexane	7.795	56	2476	1.162	ug/l #	1
36) 1,1-Dichloropropene	7.801	75	8823	4.882	ug/l #	50
38) Carbon Tetrachloride	7.801	117	11347	5.777	ug/l #	18
76) 1,2,3-Trichloropropane	12.483	75	42108	45.321	ug/l #	100
77) Bromobenzene	12.398	156	1761	1.145	ug/l #	1
81) trans-1,4-Dichloro-2-b...	12.483	75	42108	91.361	ug/l #	11
-----						

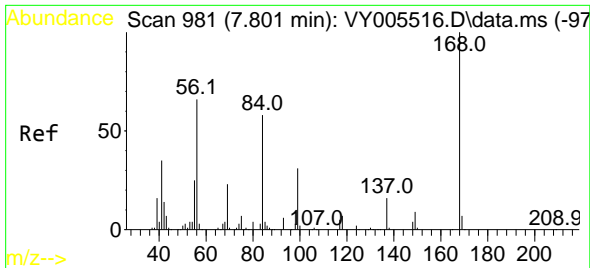
(#) = qualifier out of range (m) = manual integration (+) = signals summed

Data Path : Z:\voasrv\HPCHEM1\MSVOA\_Y\Data\VY081921\  
 Data File : VY005772.D  
 Acq On : 19 Aug 2021 16:21  
 Operator : SY/MD  
 Sample : M3414-11  
 Misc : 5.06G/5ML/MSVOA\_Y/SOIL  
 ALS Vial : 19 Sample Multiplier: 1

Instrument :  
 MSVOA\_Y  
 ClientSampleId :

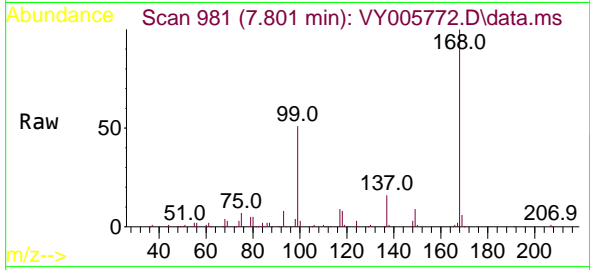
Quant Time: Aug 20 06:57:26 2021  
 Quant Method : Z:\voasrv\HPCHEM1\MSVOA\_Y\methods\82Y080221S.M  
 Quant Title : SW846 8260  
 QLast Update : Tue Aug 03 04:52:05 2021  
 Response via : Initial Calibration



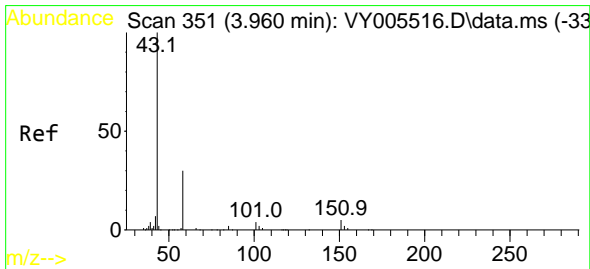
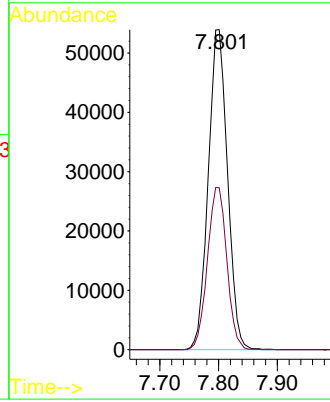
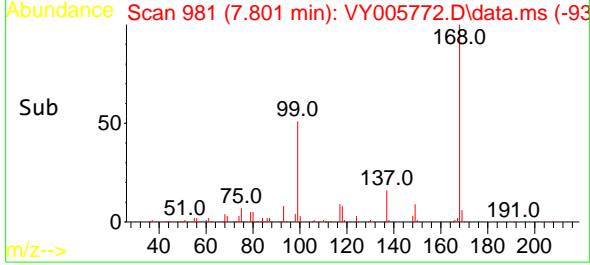


#1  
 Pentafluorobenzene  
 Concen: 50.000 ug/l  
 RT: 7.801 min Scan# 981  
 Delta R.T. 0.000 min  
 Lab File: VY005772.D  
 Acq: 19 Aug 2021 16:21

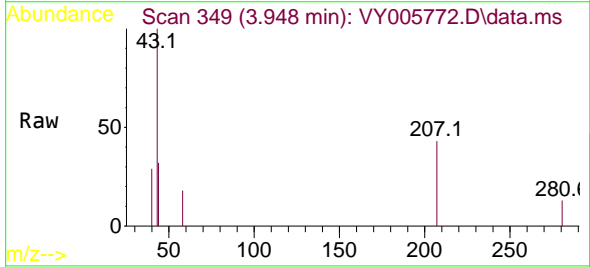
Instrument :  
 MSVOA\_Y  
 ClientSampleId :



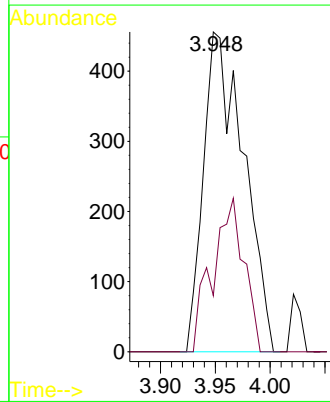
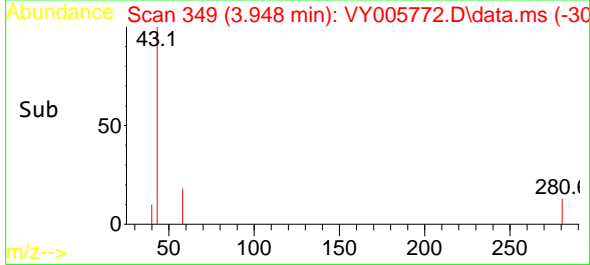
Tgt Ion:168 Resp: 122734  
 Ion Ratio Lower Upper  
 168 100  
 99 50.6 38.9 58.3

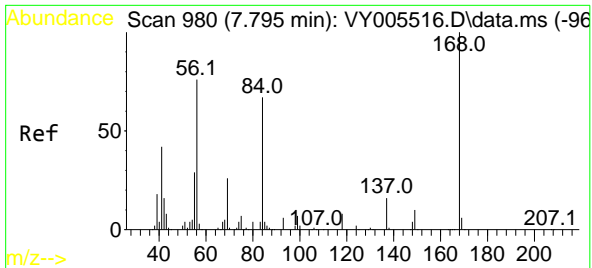


#16  
 Acetone  
 Concen: 3.694 ug/l  
 RT: 3.948 min Scan# 349  
 Delta R.T. -0.012 min  
 Lab File: VY005772.D  
 Acq: 19 Aug 2021 16:21



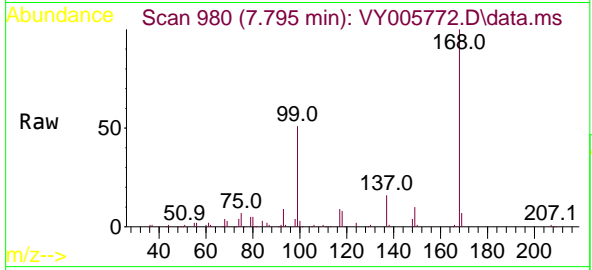
Tgt Ion: 43 Resp: 1157  
 Ion Ratio Lower Upper  
 43 100  
 58 17.5 23.8 35.6#





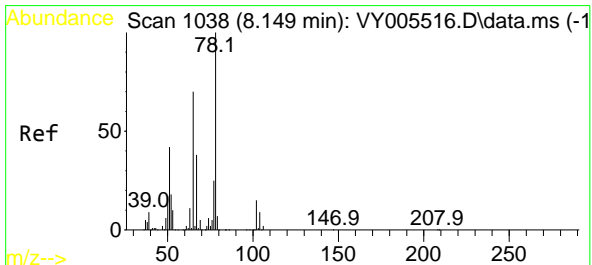
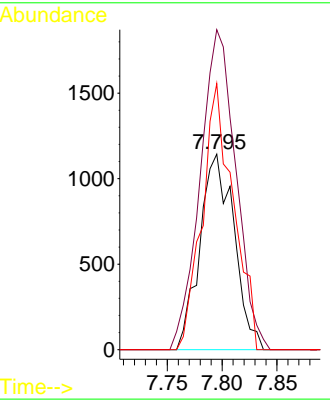
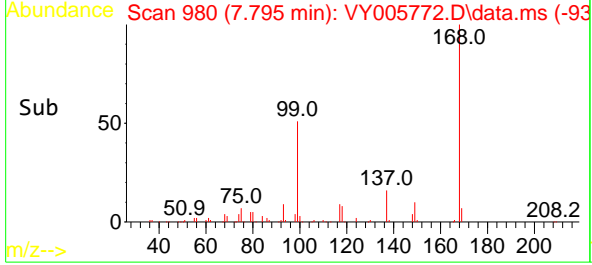
#31  
 Cyclohexane  
 Concen: 1.162 ug/l  
 RT: 7.795 min Scan# 980  
 Delta R.T. -0.000 min  
 Lab File: VY005772.D  
 Acq: 19 Aug 2021 16:21

Instrument :  
 MSVOA\_Y  
 ClientSampled :

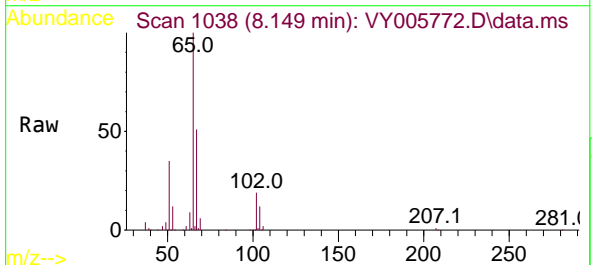


Tgt Ion: 56 Resp: 2476

Ion	Ratio	Lower	Upper
56	100		
69	163.7	27.7	41.5#
84	136.1	70.9	106.3#

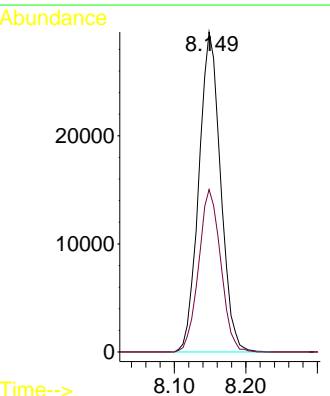
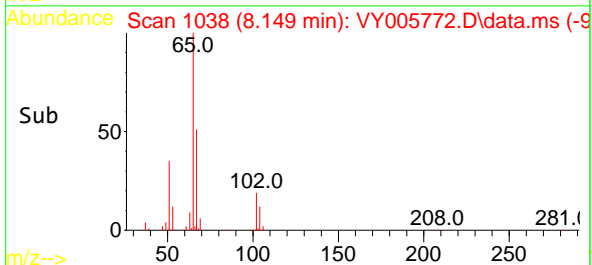


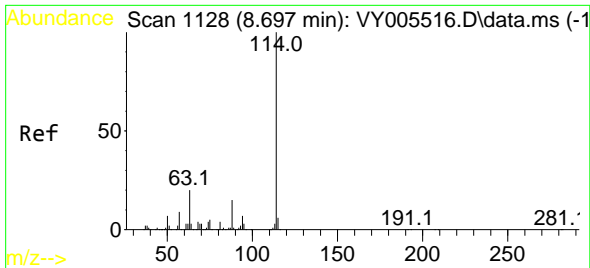
#33  
 1,2-Dichloroethane-d4  
 Concen: 50.345 ug/l  
 RT: 8.149 min Scan# 1038  
 Delta R.T. -0.000 min  
 Lab File: VY005772.D  
 Acq: 19 Aug 2021 16:21



Tgt Ion: 65 Resp: 62547

Ion	Ratio	Lower	Upper
65	100		
67	51.4	0.0	103.4



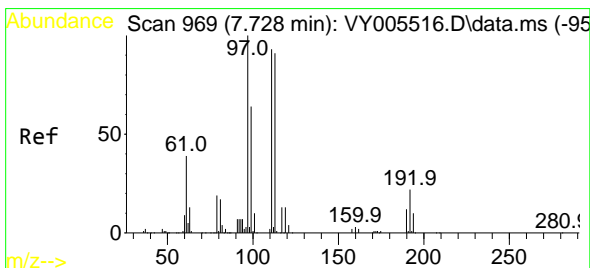
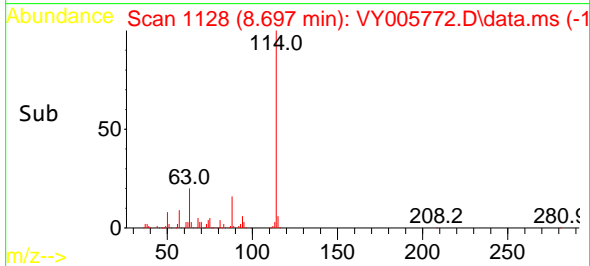
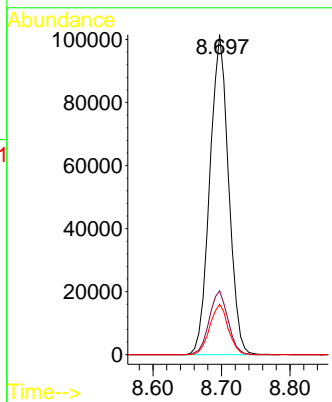
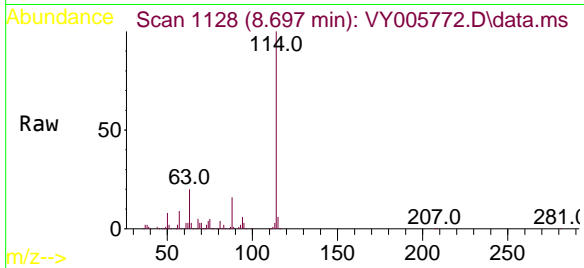


#34  
 1,4-Difluorobenzene  
 Concen: 50.000 ug/l  
 RT: 8.697 min Scan# 1128  
 Delta R.T. -0.000 min  
 Lab File: VY005772.D  
 Acq: 19 Aug 2021 16:21

Instrument :  
 MSVOA\_Y  
 ClientSampled :

Tgt Ion:114 Resp: 192689

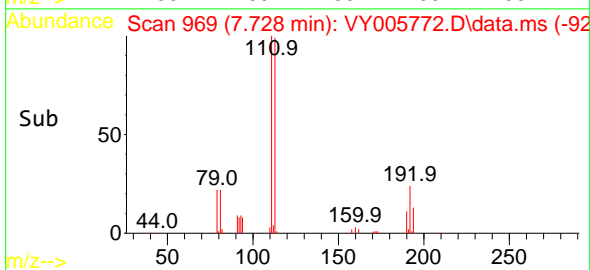
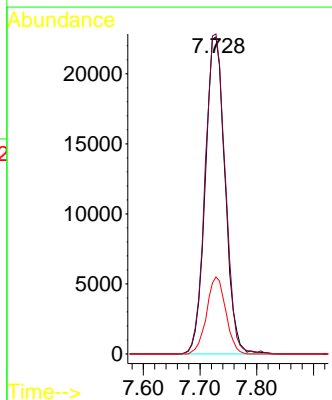
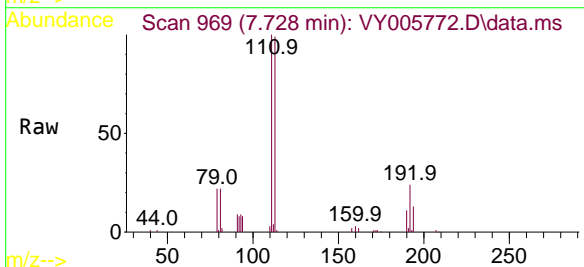
Ion	Ratio	Lower	Upper
114	100		
63	19.9	0.0	39.2
88	15.7	0.0	30.8

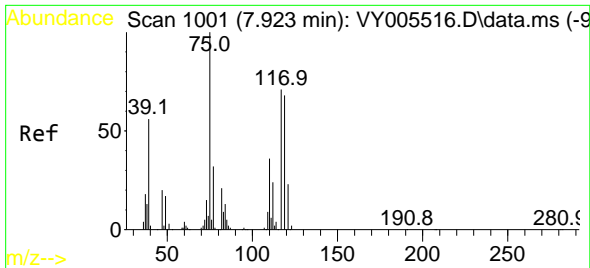


#35  
 Dibromofluoromethane  
 Concen: 50.737 ug/l  
 RT: 7.728 min Scan# 969  
 Delta R.T. -0.000 min  
 Lab File: VY005772.D  
 Acq: 19 Aug 2021 16:21

Tgt Ion:113 Resp: 54736

Ion	Ratio	Lower	Upper
113	100		
111	102.5	81.9	122.9
192	23.6	19.2	28.8



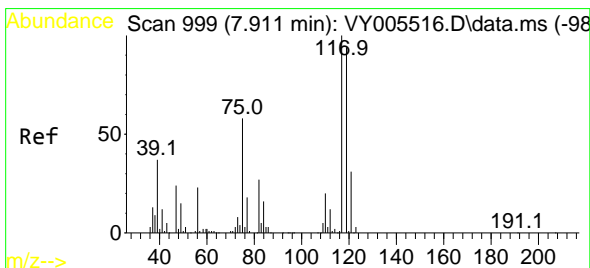
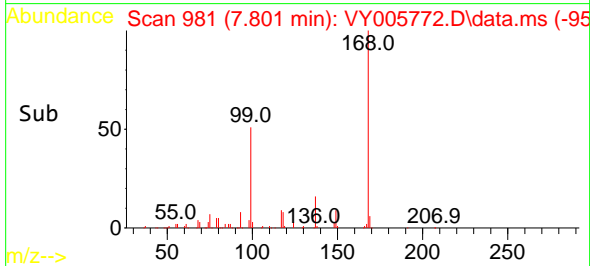
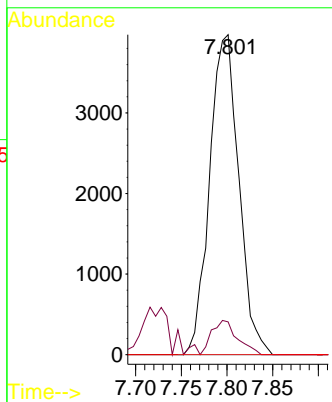
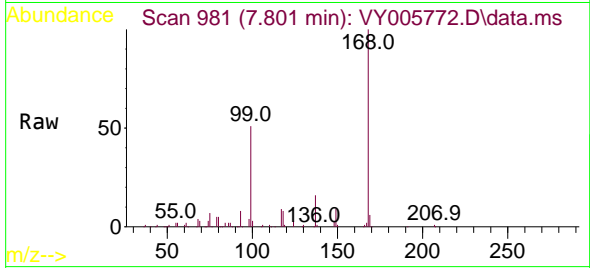


#36  
 1,1-Dichloropropene  
 Concen: 4.882 ug/l  
 RT: 7.801 min Scan# 981  
 Delta R.T. -0.122 min  
 Lab File: VY005772.D  
 Acq: 19 Aug 2021 16:21

Instrument :  
 MSVOA\_Y  
 ClientSampled :

Tgt Ion: 75 Resp: 8823

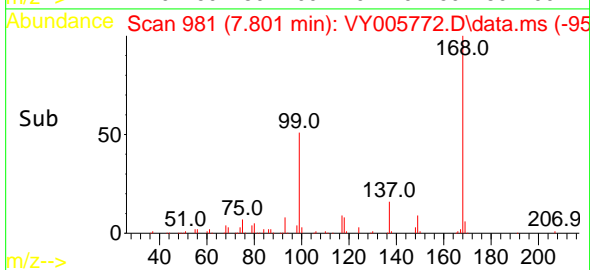
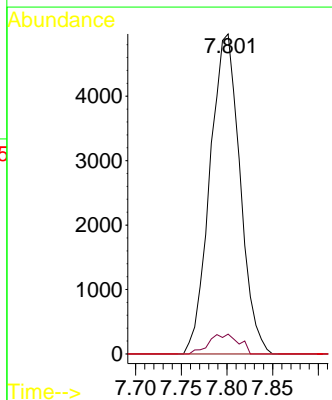
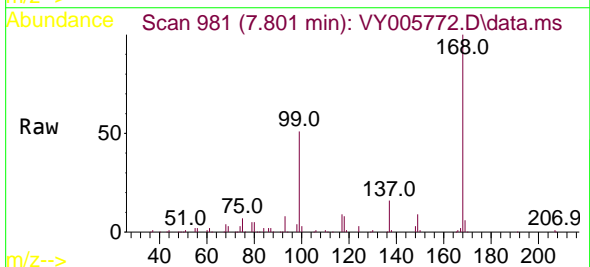
Ion	Ratio	Lower	Upper
75	100		
110	9.9	18.1	54.1#
77	0.0	25.1	37.7#

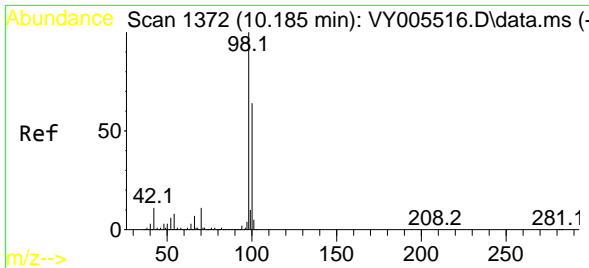


#38  
 Carbon Tetrachloride  
 Concen: 5.777 ug/l  
 RT: 7.801 min Scan# 981  
 Delta R.T. -0.110 min  
 Lab File: VY005772.D  
 Acq: 19 Aug 2021 16:21

Tgt Ion: 117 Resp: 11347

Ion	Ratio	Lower	Upper
117	100		
119	6.2	75.4	113.0#
121	0.0	25.1	37.7#

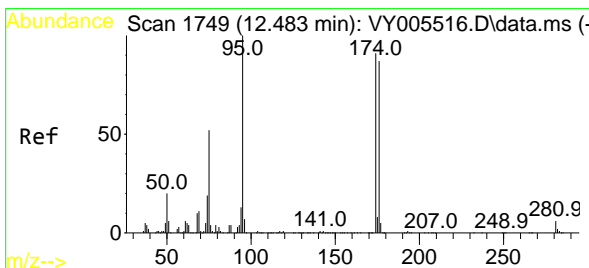
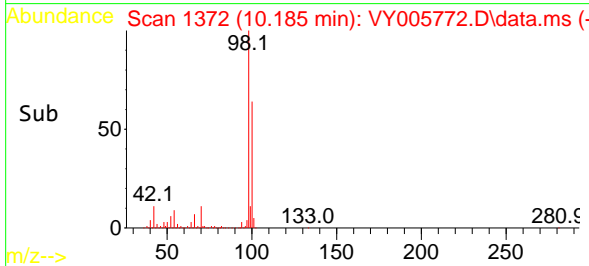
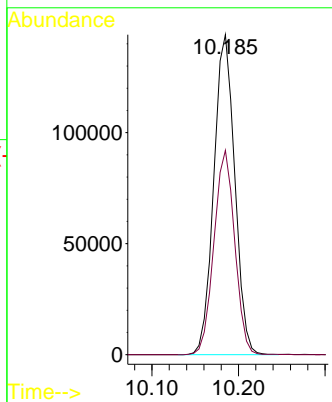
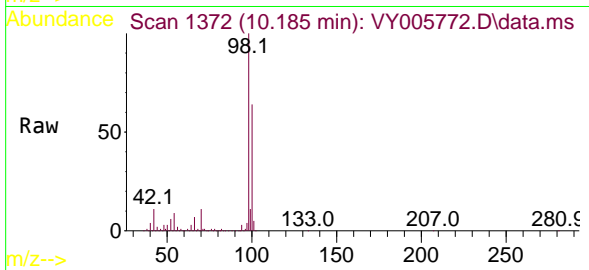




#50  
 Toluene-d8  
 Concen: 53.463 ug/l  
 RT: 10.185 min Scan# 1372  
 Delta R.T. -0.000 min  
 Lab File: VY005772.D  
 Acq: 19 Aug 2021 16:21

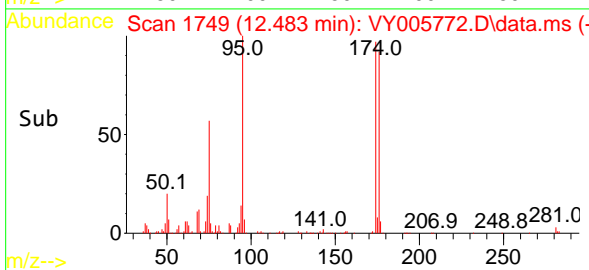
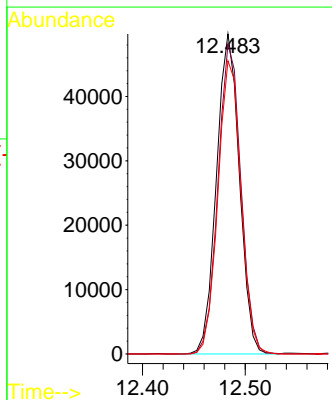
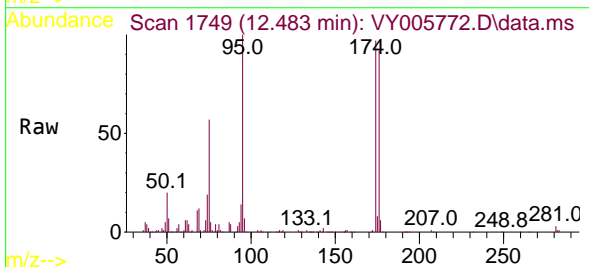
Instrument :  
 MSVOA\_Y  
 ClientSampled :

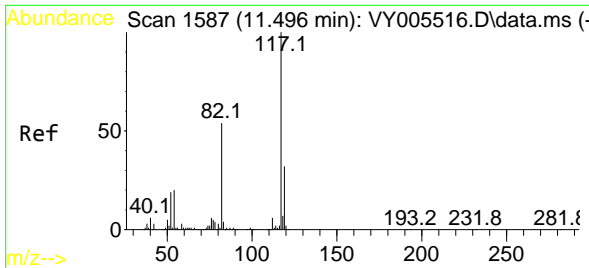
Tgt Ion: 98 Resp: 241895  
 Ion Ratio Lower Upper  
 98 100  
 100 63.3 51.3 76.9



#62  
 4-Bromofluorobenzene  
 Concen: 51.331 ug/l  
 RT: 12.483 min Scan# 1749  
 Delta R.T. -0.000 min  
 Lab File: VY005772.D  
 Acq: 19 Aug 2021 16:21

Tgt Ion: 95 Resp: 76908  
 Ion Ratio Lower Upper  
 95 100  
 174 96.8 0.0 191.4  
 176 92.0 0.0 183.6



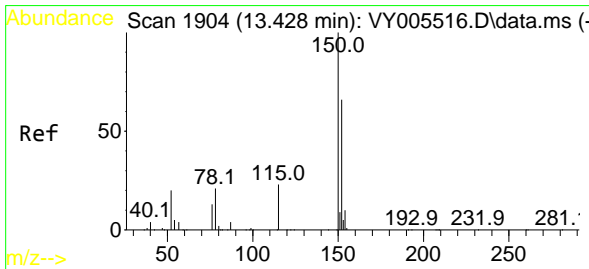
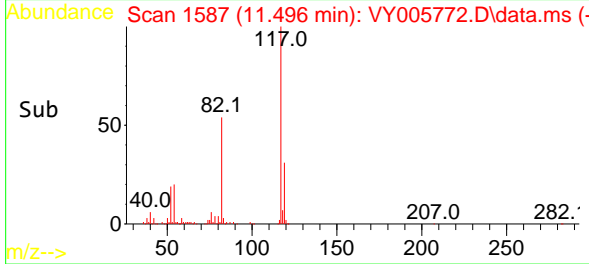
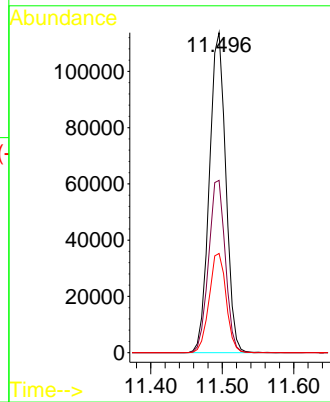
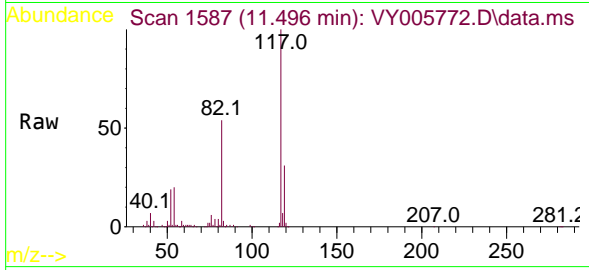


#63  
 Chlorobenzene-d5  
 Concen: 50.000 ug/l  
 RT: 11.496 min Scan# 1587  
 Delta R.T. -0.000 min  
 Lab File: VY005772.D  
 Acq: 19 Aug 2021 16:21

Instrument :  
 MSVOA\_Y  
 ClientSampled :

Tgt Ion:117 Resp: 181828

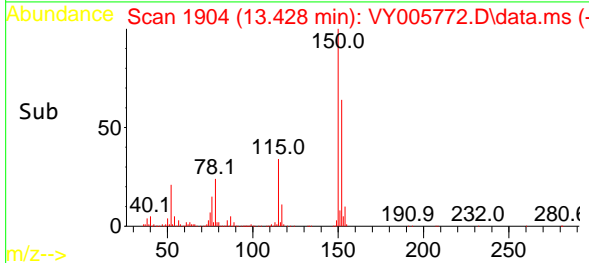
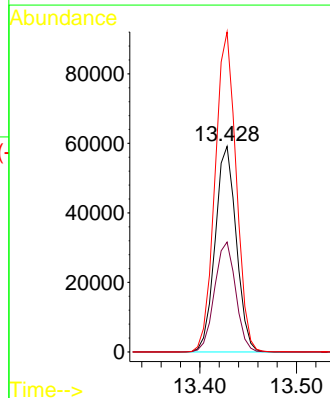
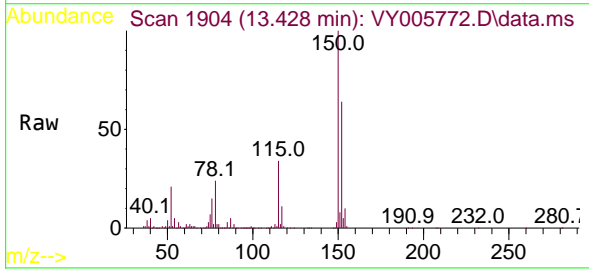
Ion	Ratio	Lower	Upper
117	100		
82	53.9	43.5	65.3
119	31.0	25.5	38.3



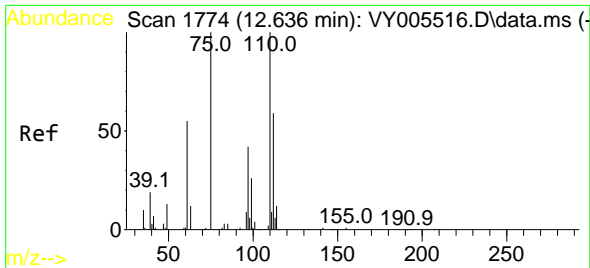
#72  
 1,4-Dichlorobenzene-d4  
 Concen: 50.000 ug/l  
 RT: 13.428 min Scan# 1904  
 Delta R.T. -0.000 min  
 Lab File: VY005772.D  
 Acq: 19 Aug 2021 16:21

Tgt Ion:152 Resp: 89657

Ion	Ratio	Lower	Upper
152	100		
115	53.7	27.3	81.9
150	155.4	0.0	350.2

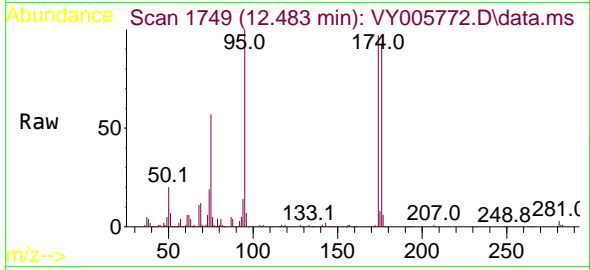




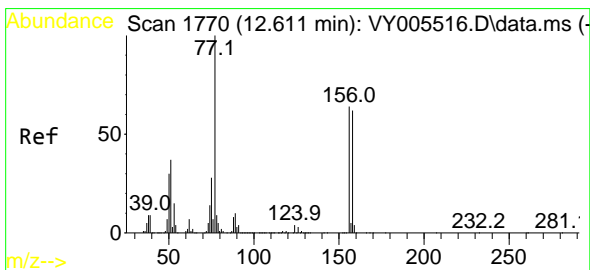
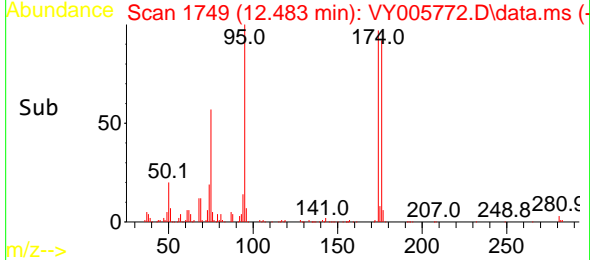
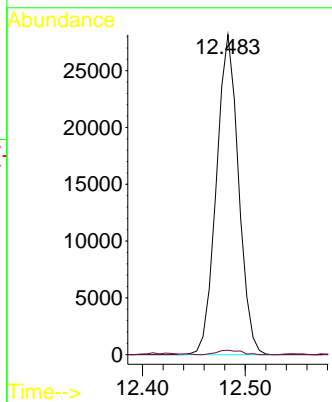


#76  
 1,2,3-Trichloropropane  
 Concen: 45.321 ug/l  
 RT: 12.483 min Scan# 1749  
 Delta R.T. -0.152 min  
 Lab File: VY005772.D  
 Acq: 19 Aug 2021 16:21

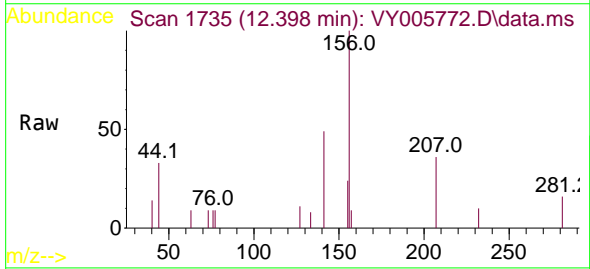
Instrument :  
 MSVOA\_Y  
 ClientSampled :



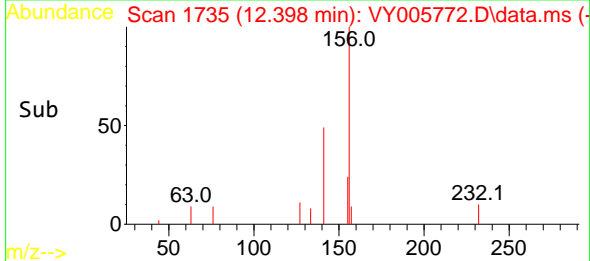
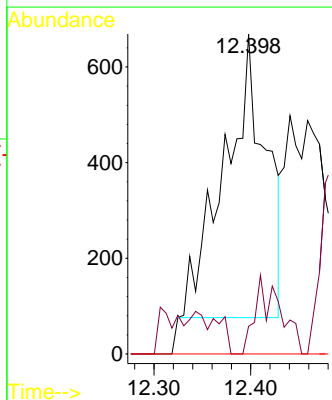
Tgt Ion: 75 Resp: 42108  
 Ion Ratio Lower Upper  
 75 100  
 77 1.5 0.0 0.0#

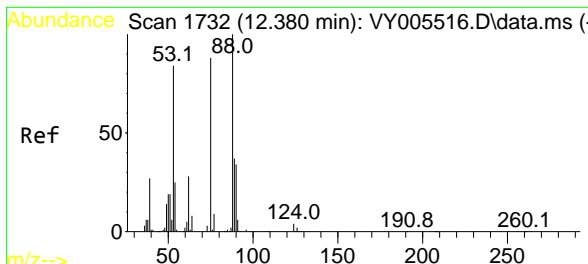


#77  
 Bromobenzene  
 Concen: 1.145 ug/l  
 RT: 12.398 min Scan# 1735  
 Delta R.T. -0.213 min  
 Lab File: VY005772.D  
 Acq: 19 Aug 2021 16:21



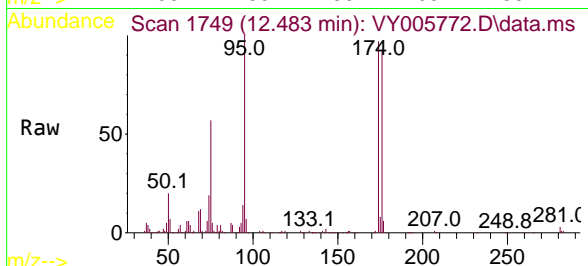
Tgt Ion: 156 Resp: 1761  
 Ion Ratio Lower Upper  
 156 100  
 77 16.6 85.5 256.5#  
 158 0.0 48.5 145.6#





#81  
 trans-1,4-Dichloro-2-butene  
 Concen: 91.361 ug/l  
 RT: 12.483 min Scan# 1749  
 Delta R.T. 0.104 min  
 Lab File: VY005772.D  
 Acq: 19 Aug 2021 16:21

Instrument :  
 MSVOA\_Y  
 ClientSampled :



Tgt Ion: 75 Resp: 42108

Ion	Ratio	Lower	Upper
75	100		
53	0.4	76.7	115.1#
89	0.0	38.4	57.6#

