

Data Path : Z:\voasrv\HPCHEM1\MSVOA_Y\Data\VY081921\
 Data File : VY005780.D
 Acq On : 19 Aug 2021 19:27
 Operator : SY/MD
 Sample : M3414-09RE
 Misc : 5.11G/5ML/MSVOA_Y/SOIL
 ALS Vial : 27 Sample Multiplier: 1

Instrument :
 MSVOA_Y
 ClientSampled :

Quant Time: Aug 20 06:59:11 2021
 Quant Method : Z:\voasrv\HPCHEM1\MSVOA_Y\methods\82Y080221S.M
 Quant Title : SW846 8260
 QLast Update : Tue Aug 03 04:52:05 2021
 Response via : Initial Calibration

Compound	R.T.	QIon	Response	Conc	Units	Dev(Min)

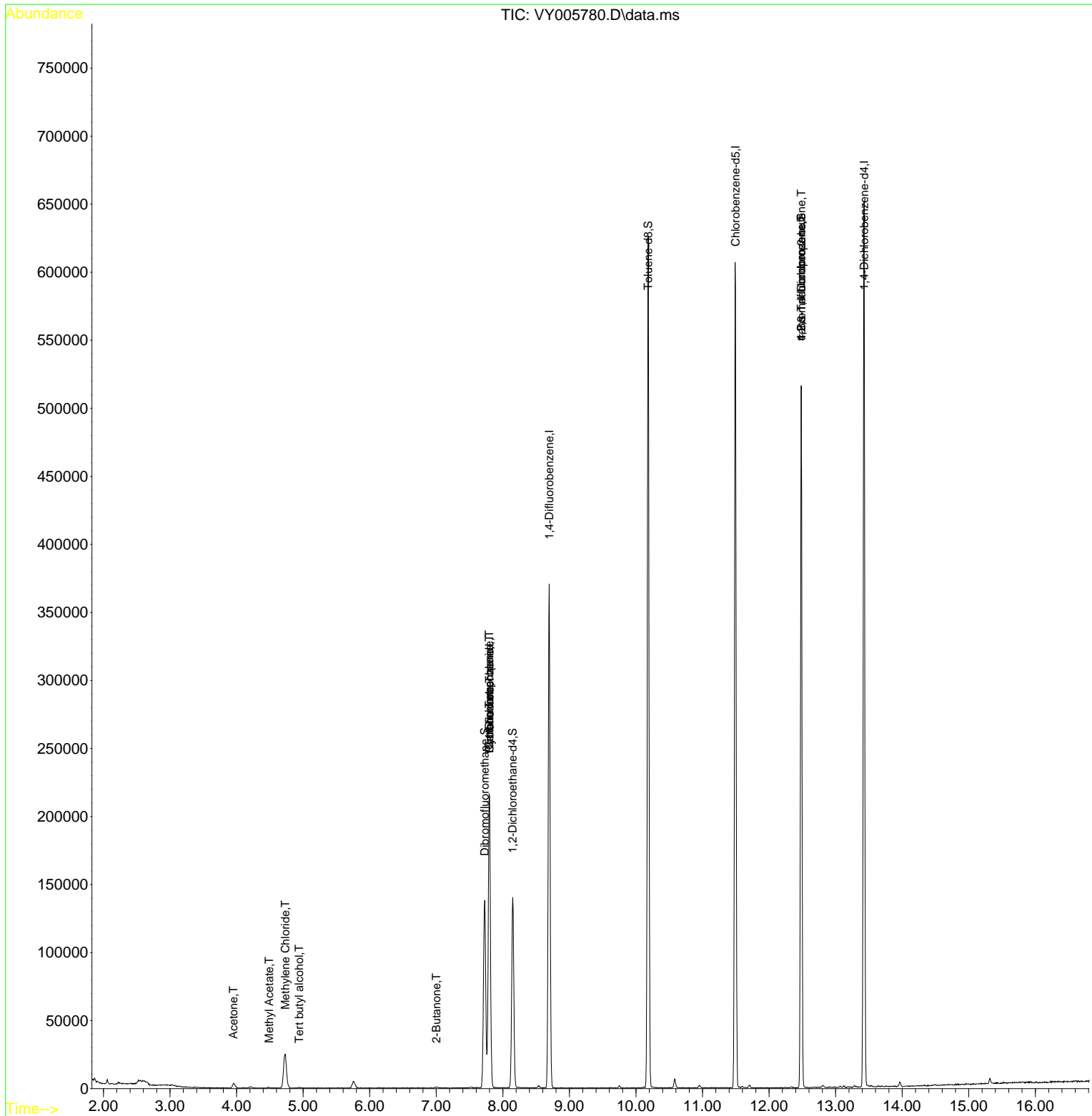
Internal Standards						
1) Pentafluorobenzene	7.801	168	176719	50.000	ug/l	0.00
34) 1,4-Difluorobenzene	8.697	114	304403	50.000	ug/l	0.00
63) Chlorobenzene-d5	11.495	117	319494	50.000	ug/l	0.00
72) 1,4-Dichlorobenzene-d4	13.428	152	168336	50.000	ug/l	0.00
System Monitoring Compounds						
33) 1,2-Dichloroethane-d4	8.148	65	113891	63.668	ug/l	0.00
Spiked Amount	50.000	Range	50 - 163	Recovery	=	127.340%
35) Dibromofluoromethane	7.728	113	92798	54.450	ug/l	0.00
Spiked Amount	50.000	Range	54 - 147	Recovery	=	108.900%
50) Toluene-d8	10.185	98	396140	55.423	ug/l	0.00
Spiked Amount	50.000	Range	49 - 140	Recovery	=	110.840%
62) 4-Bromofluorobenzene	12.483	95	141205	59.657	ug/l	0.00
Spiked Amount	50.000	Range	25 - 144	Recovery	=	119.320%
Target Compounds						
					Qvalue	
11) Tert butyl alcohol	4.942	59	554	3.133	ug/l #	73
16) Acetone	3.954	43	6036	13.383	ug/l	98
18) Methyl Acetate	4.491	43	1191	1.010	ug/l #	62
20) Methylene Chloride	4.734	84	19154	5.292	ug/l	92
25) 2-Butanone	7.002	43	864	1.296	ug/l #	85
31) Cyclohexane	7.801	56	3777	1.231	ug/l #	37
36) 1,1-Dichloropropene	7.795	75	12793	4.481	ug/l #	49
38) Carbon Tetrachloride	7.795	117	16274	5.245	ug/l #	16
76) 1,2,3-Trichloropropane	12.483	75	78874	45.214	ug/l #	100
81) trans-1,4-Dichloro-2-b...	12.483	75	78874	91.146	ug/l #	11

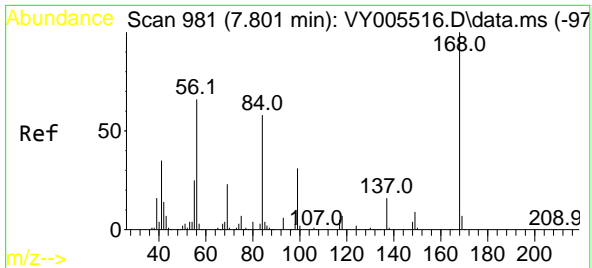
(#) = qualifier out of range (m) = manual integration (+) = signals summed

Data Path : Z:\voasrv\HPCHEM1\MSVOA_Y\Data\VY081921\
 Data File : VY005780.D
 Acq On : 19 Aug 2021 19:27
 Operator : SY/MD
 Sample : M3414-09RE
 Misc : 5.11G/5ML/MSVOA_Y/SOIL
 ALS Vial : 27 Sample Multiplier: 1

Instrument :
 MSVOA_Y
 ClientSampled :

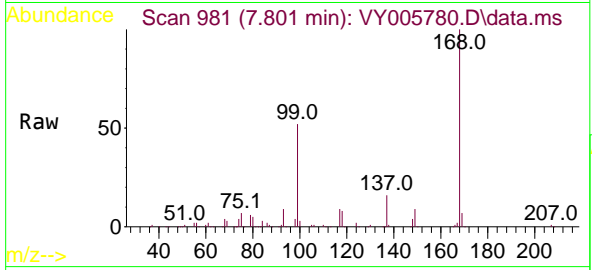
Quant Time: Aug 20 06:59:11 2021
 Quant Method : Z:\voasrv\HPCHEM1\MSVOA_Y\methods\82Y080221S.M
 Quant Title : SW846 8260
 QLast Update : Tue Aug 03 04:52:05 2021
 Response via : Initial Calibration



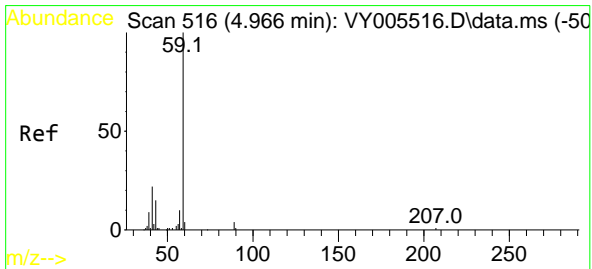
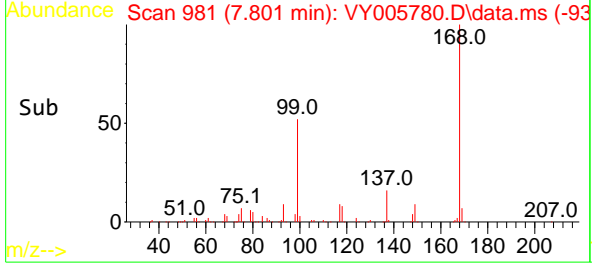
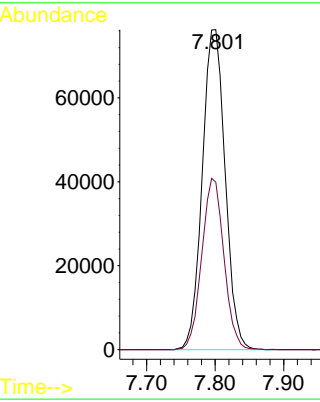


#1
 Pentafluorobenzene
 Concen: 50.000 ug/l
 RT: 7.801 min Scan# 981
 Delta R.T. -0.000 min
 Lab File: VY005780.D
 Acq: 19 Aug 2021 19:27

Instrument :
 MSVOA_Y
 ClientSampled :

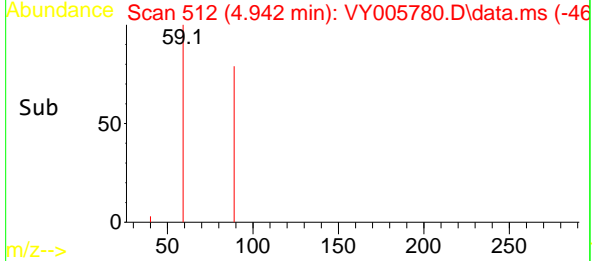
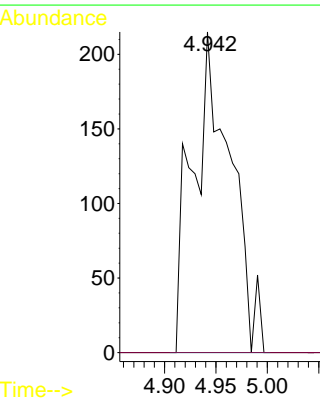
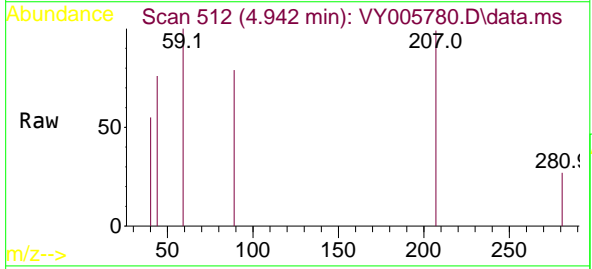


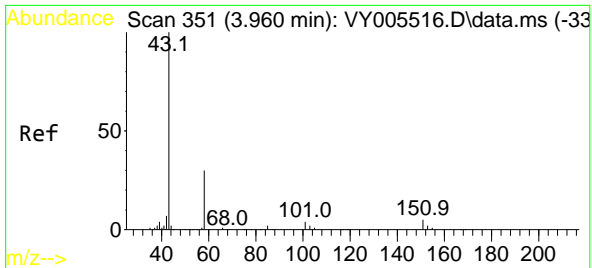
Tgt Ion:168 Resp: 176719
 Ion Ratio Lower Upper
 168 100
 99 52.4 38.9 58.3



#11
 Tert butyl alcohol
 Concen: 3.133 ug/l
 RT: 4.942 min Scan# 512
 Delta R.T. -0.025 min
 Lab File: VY005780.D
 Acq: 19 Aug 2021 19:27

Tgt Ion: 59 Resp: 554
 Ion Ratio Lower Upper
 59 100
 57 0.0 8.0 12.0#

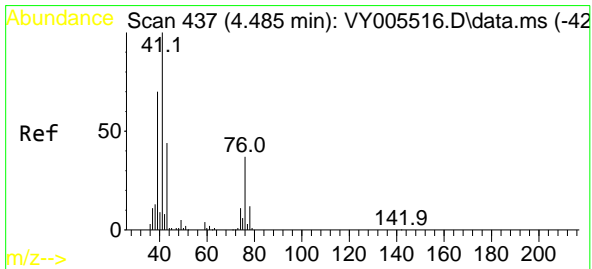
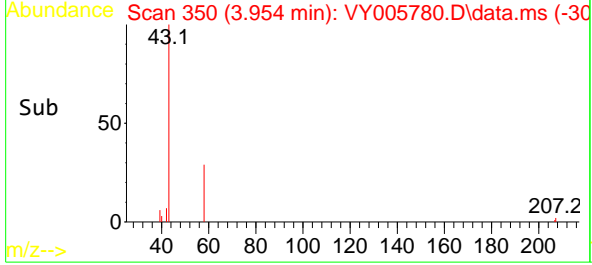
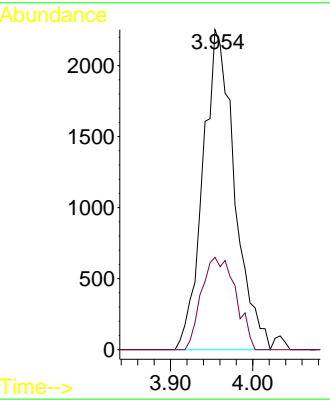
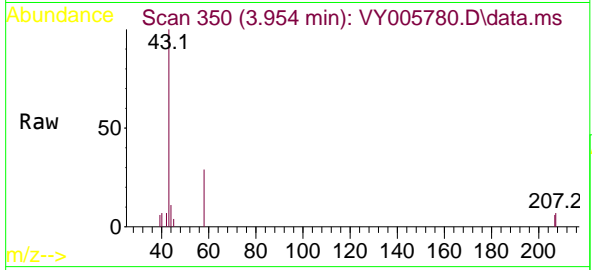




#16
 Acetone
 Concen: 13.383 ug/l
 RT: 3.954 min Scan# 350
 Delta R.T. -0.006 min
 Lab File: VY005780.D
 Acq: 19 Aug 2021 19:27

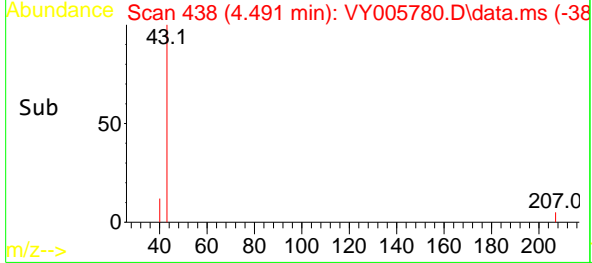
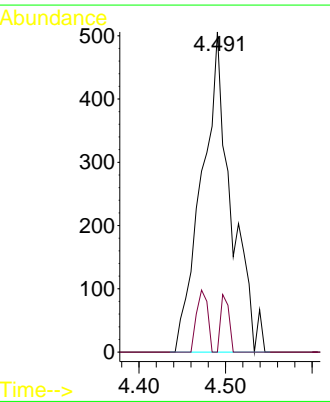
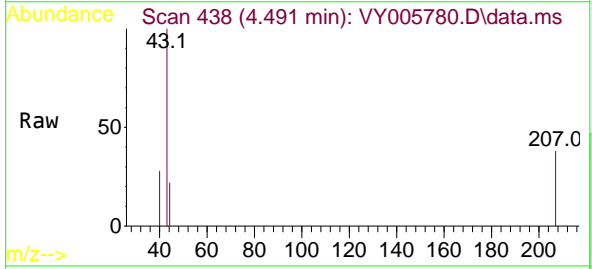
Instrument :
 MSVOA_Y
 ClientSampled :

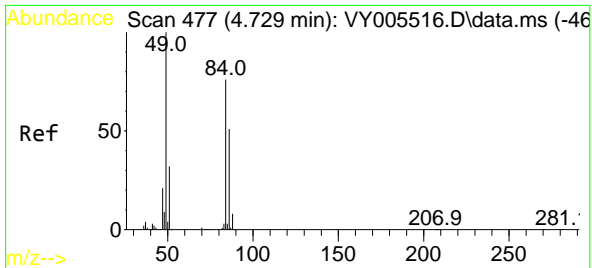
Tgt Ion: 43 Resp: 6036
 Ion Ratio Lower Upper
 43 100
 58 28.9 23.8 35.6



#18
 Methyl Acetate
 Concen: 1.010 ug/l
 RT: 4.491 min Scan# 438
 Delta R.T. 0.006 min
 Lab File: VY005780.D
 Acq: 19 Aug 2021 19:27

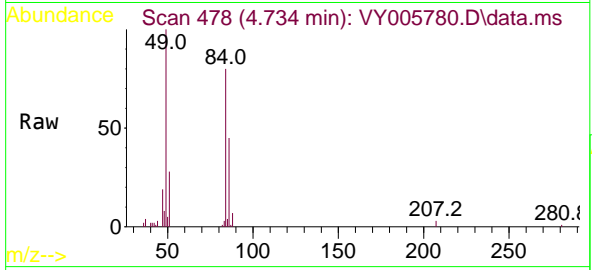
Tgt Ion: 43 Resp: 1191
 Ion Ratio Lower Upper
 43 100
 74 5.0 19.0 28.6#



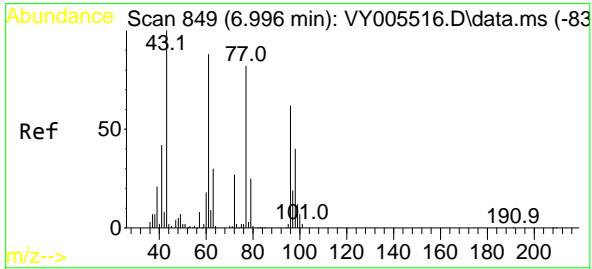
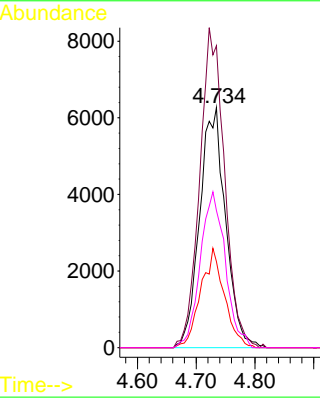
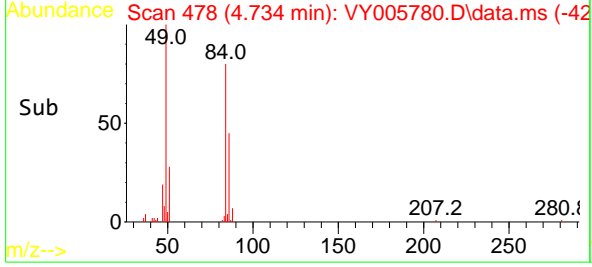


#20
Methylene Chloride
Concen: 5.292 ug/l
RT: 4.734 min Scan# 478
Delta R.T. 0.005 min
Lab File: VY005780.D
Acq: 19 Aug 2021 19:27

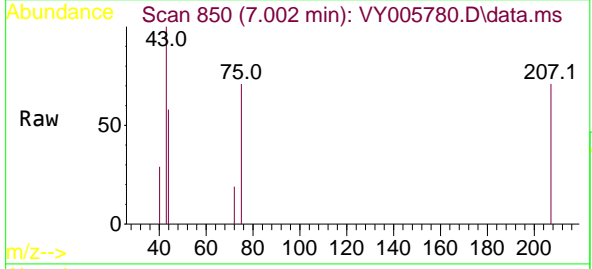
Instrument :
MSVOA_Y
ClientSampled :



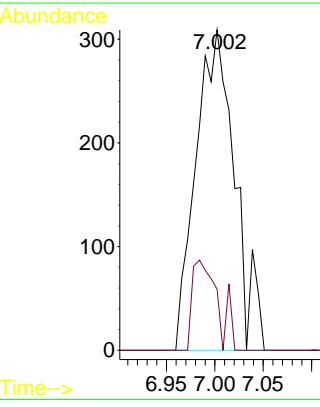
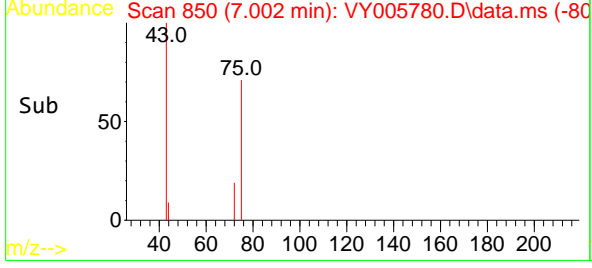
Tgt Ion: 84 Resp: 19154
Ion Ratio Lower Upper
84 100
49 125.7 105.8 158.6
51 35.8 33.4 50.2
86 57.1 54.2 81.4

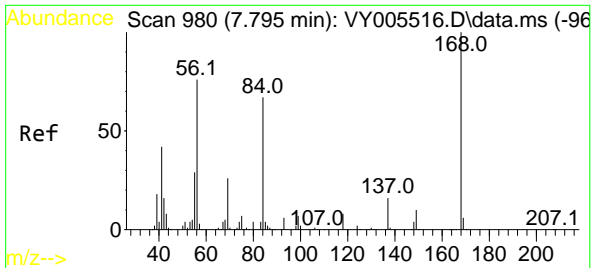


#25
2-Butanone
Concen: 1.296 ug/l
RT: 7.002 min Scan# 850
Delta R.T. 0.006 min
Lab File: VY005780.D
Acq: 19 Aug 2021 19:27



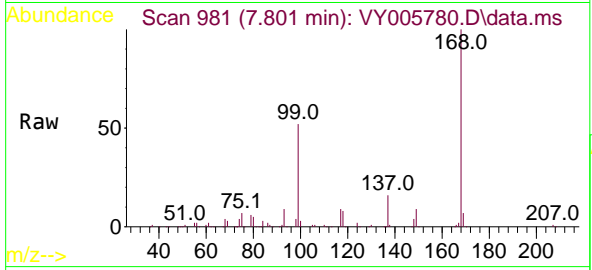
Tgt Ion: 43 Resp: 864
Ion Ratio Lower Upper
43 100
72 19.1 21.4 32.2#



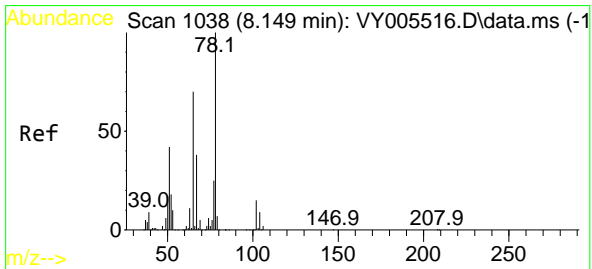
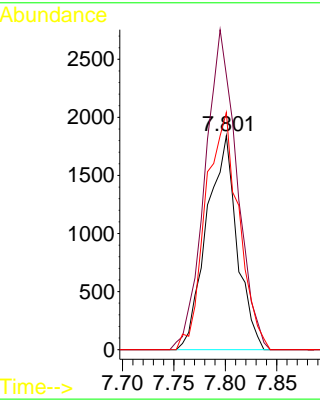
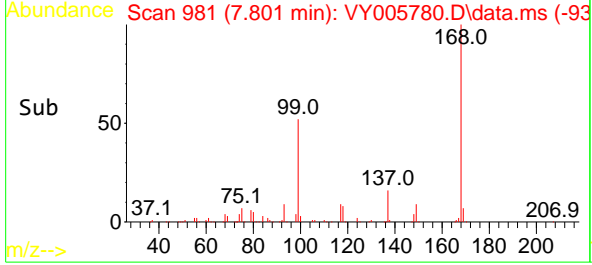


#31
 Cyclohexane
 Concen: 1.231 ug/l
 RT: 7.801 min Scan# 981
 Delta R.T. 0.006 min
 Lab File: VY005780.D
 Acq: 19 Aug 2021 19:27

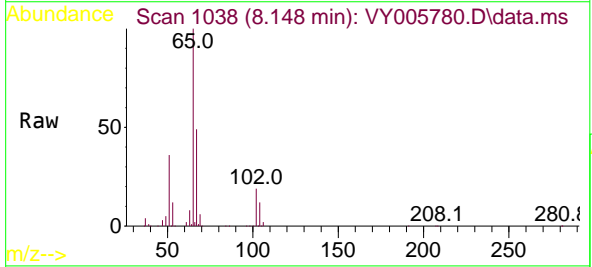
Instrument :
 MSVOA_Y
 ClientSampled :



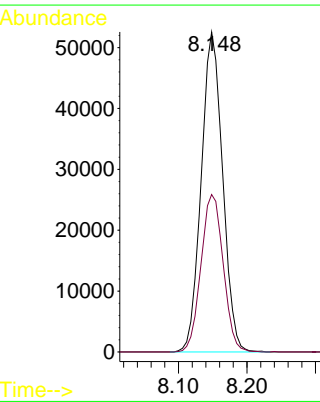
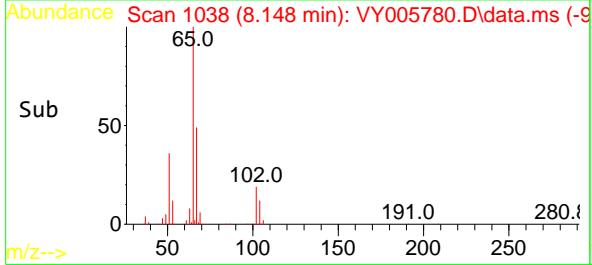
Tgt Ion: 56 Resp: 3777
 Ion Ratio Lower Upper
 56 100
 69 128.3 27.7 41.5#
 84 110.9 70.9 106.3#

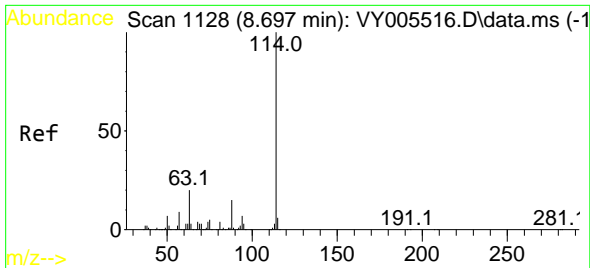


#33
 1,2-Dichloroethane-d4
 Concen: 63.668 ug/l
 RT: 8.148 min Scan# 1038
 Delta R.T. -0.000 min
 Lab File: VY005780.D
 Acq: 19 Aug 2021 19:27



Tgt Ion: 65 Resp: 113891
 Ion Ratio Lower Upper
 65 100
 67 51.1 0.0 103.4

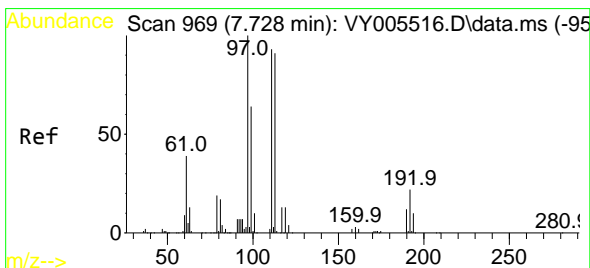
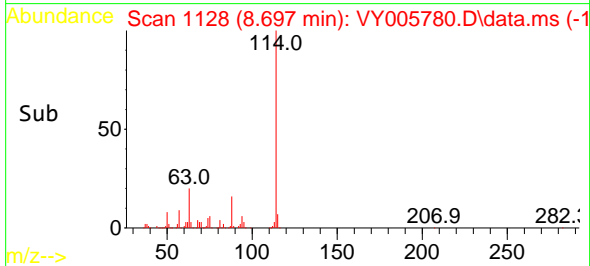
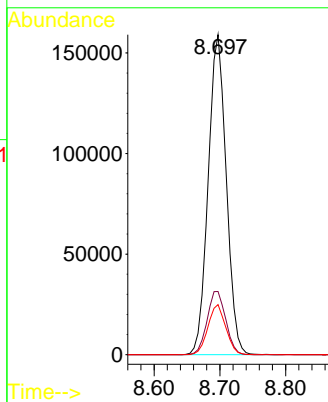
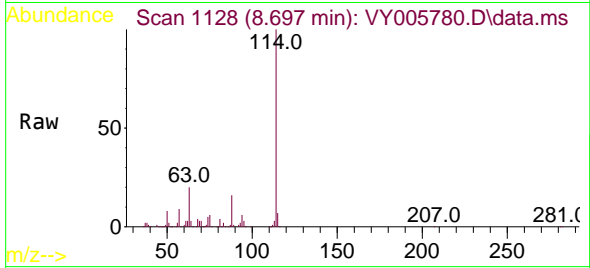




#34
 1,4-Difluorobenzene
 Concen: 50.000 ug/l
 RT: 8.697 min Scan# 1128
 Delta R.T. -0.000 min
 Lab File: VY005780.D
 Acq: 19 Aug 2021 19:27

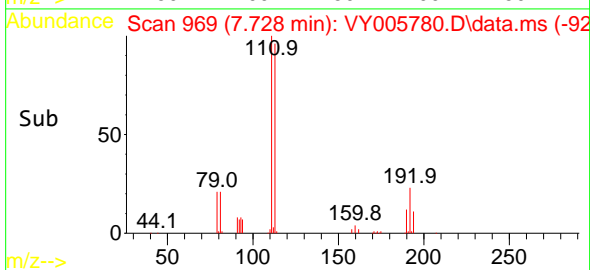
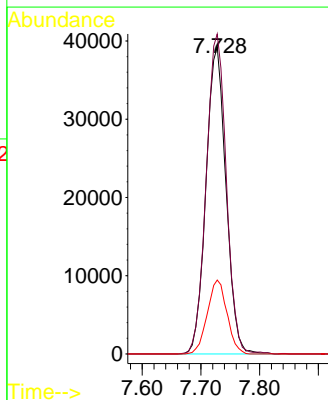
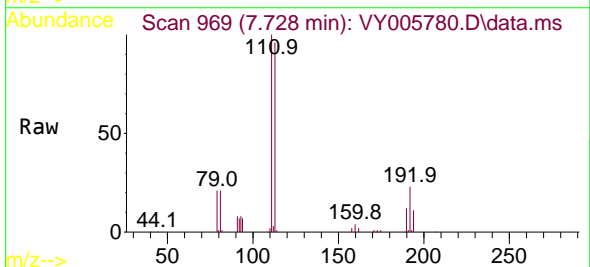
Instrument :
 MSVOA_Y
 ClientSampled :

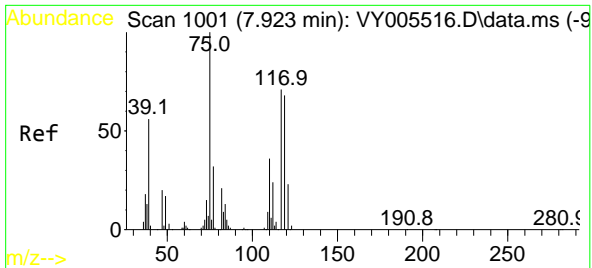
Tgt Ion:114 Resp: 304403
 Ion Ratio Lower Upper
 114 100
 63 19.8 0.0 39.2
 88 15.7 0.0 30.8



#35
 Dibromofluoromethane
 Concen: 54.450 ug/l
 RT: 7.728 min Scan# 969
 Delta R.T. -0.000 min
 Lab File: VY005780.D
 Acq: 19 Aug 2021 19:27

Tgt Ion:113 Resp: 92798
 Ion Ratio Lower Upper
 113 100
 111 104.6 81.9 122.9
 192 23.7 19.2 28.8



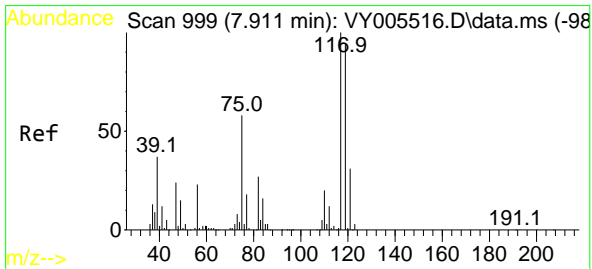
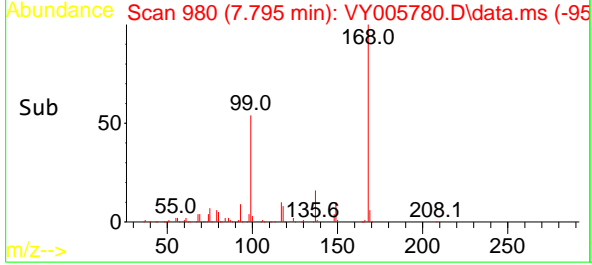
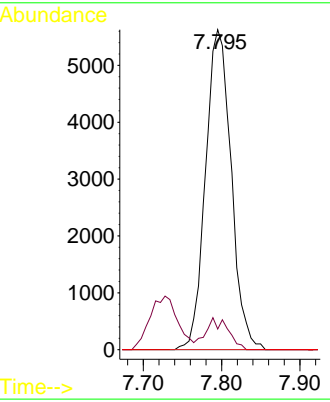
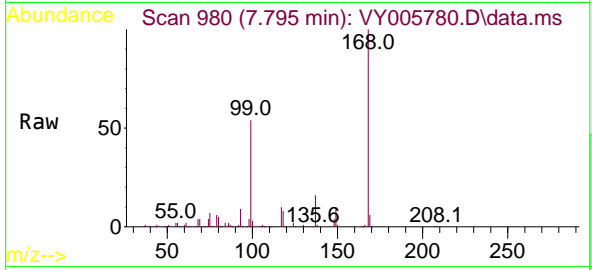


#36
 1,1-Dichloropropene
 Concen: 4.481 ug/l
 RT: 7.795 min Scan# 980
 Delta R.T. -0.128 min
 Lab File: VY005780.D
 Acq: 19 Aug 2021 19:27

Instrument :
 MSVOA_Y
 ClientSampled :

Tgt Ion: 75 Resp: 12793

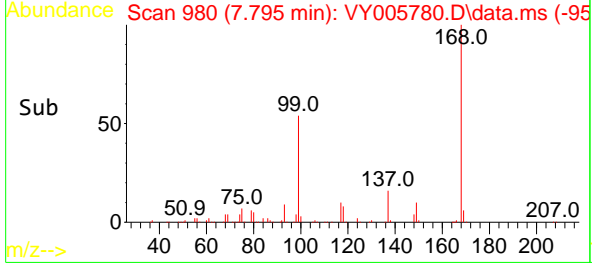
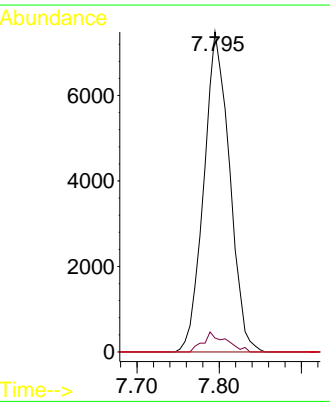
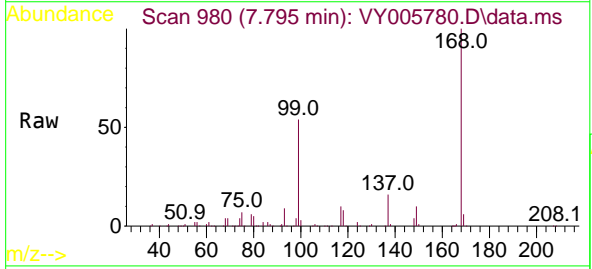
Ion	Ratio	Lower	Upper
75	100		
110	8.7	18.1	54.1#
77	0.0	25.1	37.7#

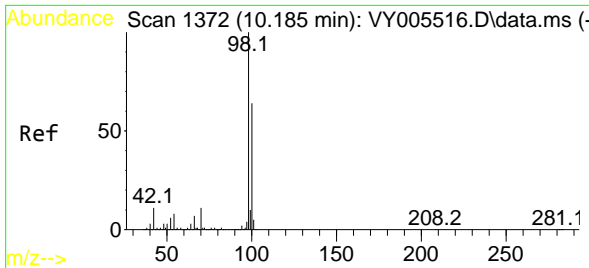


#38
 Carbon Tetrachloride
 Concen: 5.245 ug/l
 RT: 7.795 min Scan# 980
 Delta R.T. -0.116 min
 Lab File: VY005780.D
 Acq: 19 Aug 2021 19:27

Tgt Ion: 117 Resp: 16274

Ion	Ratio	Lower	Upper
117	100		
119	4.4	75.4	113.0#
121	0.0	25.1	37.7#

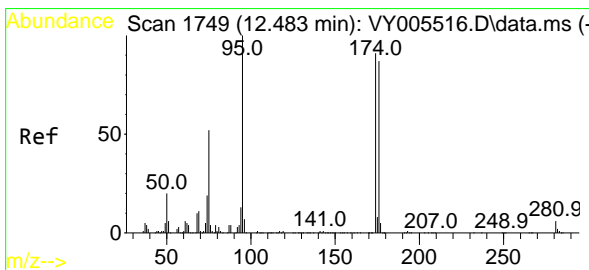
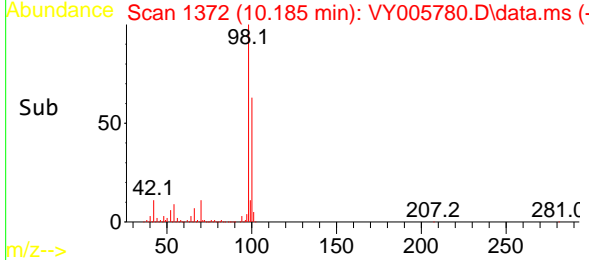
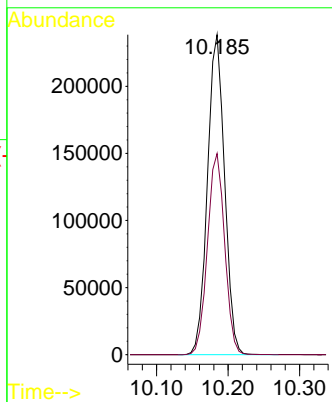
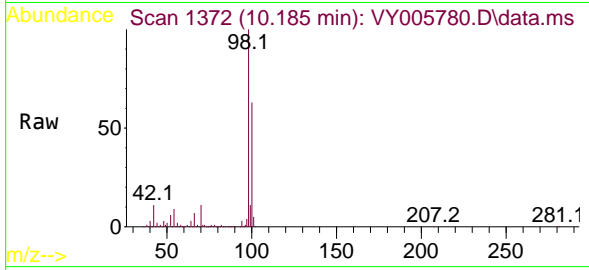




#50
 Toluene-d8
 Concen: 55.423 ug/l
 RT: 10.185 min Scan# 1372
 Delta R.T. -0.000 min
 Lab File: VY005780.D
 Acq: 19 Aug 2021 19:27

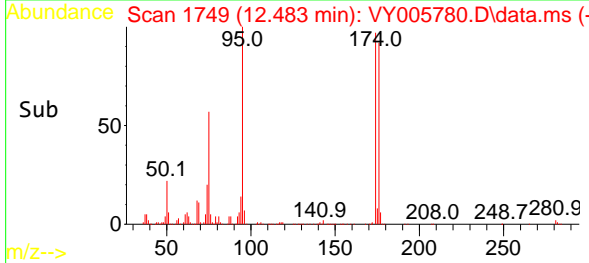
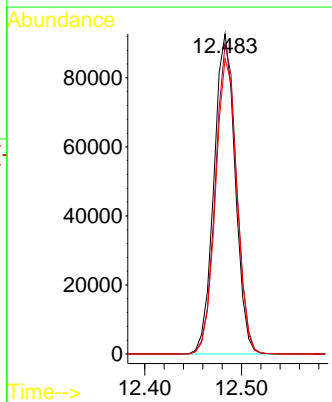
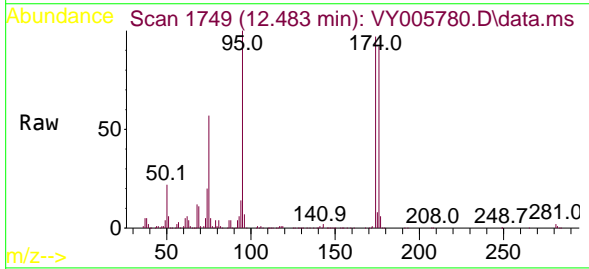
Instrument :
 MSVOA_Y
 ClientSampled :

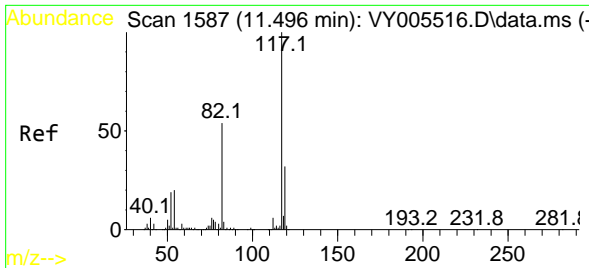
Tgt Ion: 98 Resp: 396140
 Ion Ratio Lower Upper
 98 100
 100 63.1 51.3 76.9



#62
 4-Bromofluorobenzene
 Concen: 59.657 ug/l
 RT: 12.483 min Scan# 1749
 Delta R.T. -0.000 min
 Lab File: VY005780.D
 Acq: 19 Aug 2021 19:27

Tgt Ion: 95 Resp: 141205
 Ion Ratio Lower Upper
 95 100
 174 97.1 0.0 191.4
 176 92.8 0.0 183.6

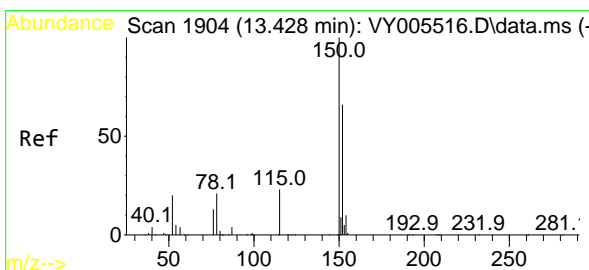
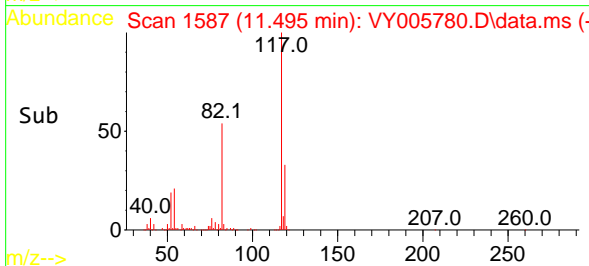
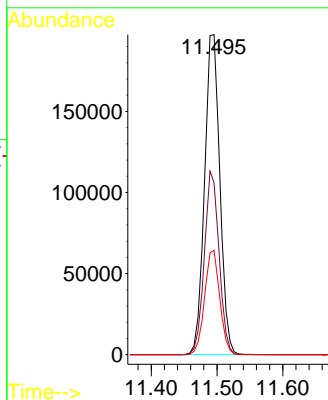
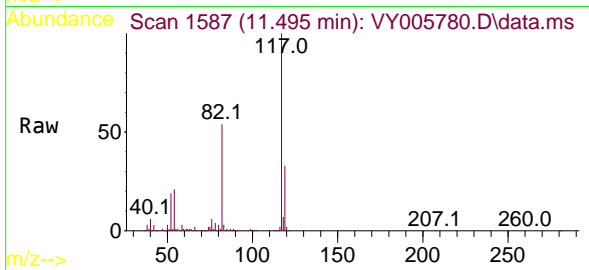




#63
 Chlorobenzene-d5
 Concen: 50.000 ug/l
 RT: 11.495 min Scan# 1587
 Delta R.T. -0.000 min
 Lab File: VY005780.D
 Acq: 19 Aug 2021 19:27

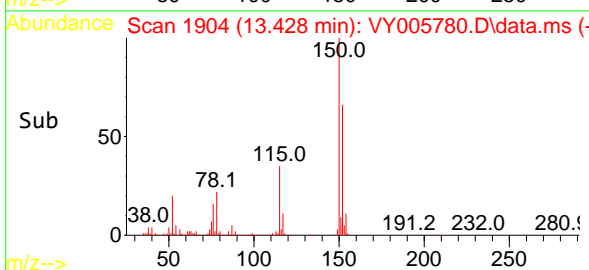
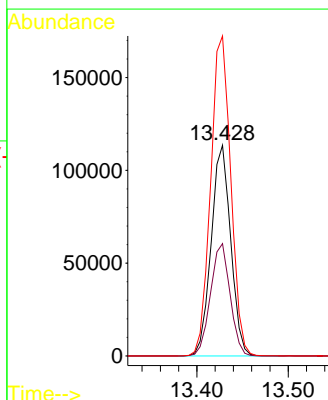
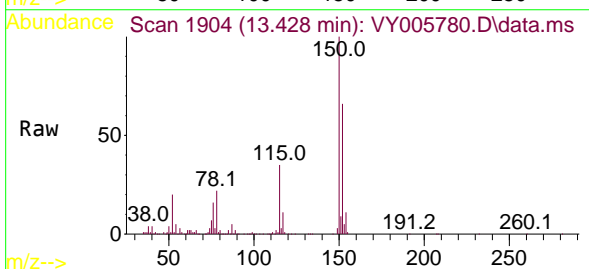
Instrument :
 MSVOA_Y
 ClientSampled :

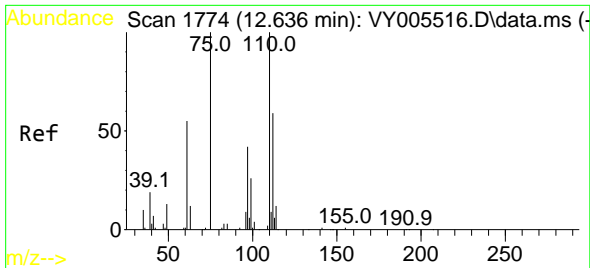
Tgt Ion:117 Resp: 319494
 Ion Ratio Lower Upper
 117 100
 82 53.8 43.5 65.3
 119 32.6 25.5 38.3



#72
 1,4-Dichlorobenzene-d4
 Concen: 50.000 ug/l
 RT: 13.428 min Scan# 1904
 Delta R.T. -0.000 min
 Lab File: VY005780.D
 Acq: 19 Aug 2021 19:27

Tgt Ion:152 Resp: 168336
 Ion Ratio Lower Upper
 152 100
 115 53.5 27.3 81.9
 150 156.4 0.0 350.2

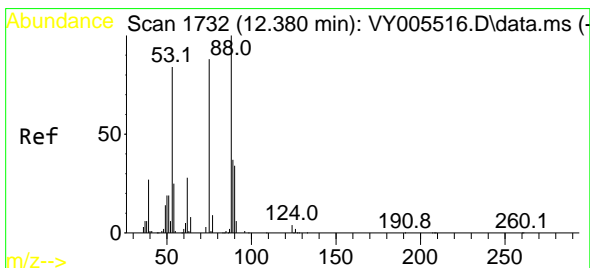
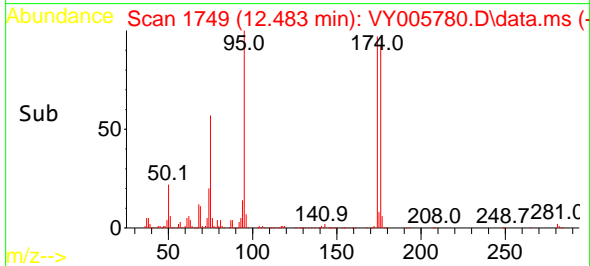
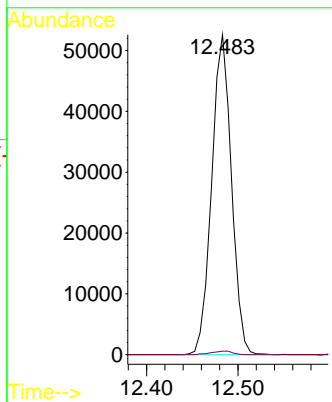
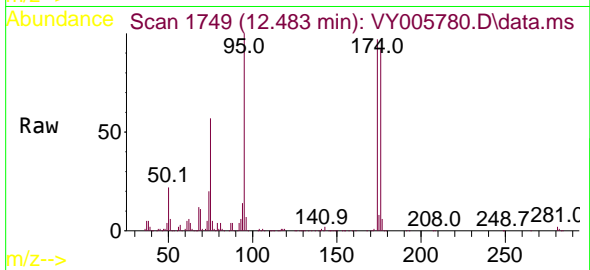




#76
 1,2,3-Trichloropropane
 Concen: 45.214 ug/l
 RT: 12.483 min Scan# 1749
 Delta R.T. -0.153 min
 Lab File: VY005780.D
 Acq: 19 Aug 2021 19:27

Instrument :
 MSVOA_Y
 ClientSampled :

Tgt Ion: 75 Resp: 78874
 Ion Ratio Lower Upper
 75 100
 77 1.2 0.0 0.0#



#81
 trans-1,4-Dichloro-2-butene
 Concen: 91.146 ug/l
 RT: 12.483 min Scan# 1749
 Delta R.T. 0.103 min
 Lab File: VY005780.D
 Acq: 19 Aug 2021 19:27

Tgt Ion: 75 Resp: 78874
 Ion Ratio Lower Upper
 75 100
 53 0.1 76.7 115.1#
 89 0.0 38.4 57.6#

