

Data Path : Z:\voasrv\HPCHEM1\MSVOA_Y\Data\VY081922\
 Data File : VY010106.D
 Acq On : 19 Aug 2022 16:17
 Operator : KP/MD
 Sample : N4214-04RE
 Misc : 5.03g/5.0mL/MSVOA_Y/SOIL
 ALS Vial : 16 Sample Multiplier: 1

Instrument :
 MSVOA_Y
 ClientSampleId :
 ETGI-357

Quant Time: Aug 22 02:42:05 2022
 Quant Method : Z:\voasrv\HPCHEM1\MSVOA_Y\methods\82Y081922S.M
 Quant Title : SW846 8260
 QLast Update : Mon Aug 22 02:37:07 2022
 Response via : Initial Calibration

Compound	R.T.	QIon	Response	Conc	Units	Dev(Min)

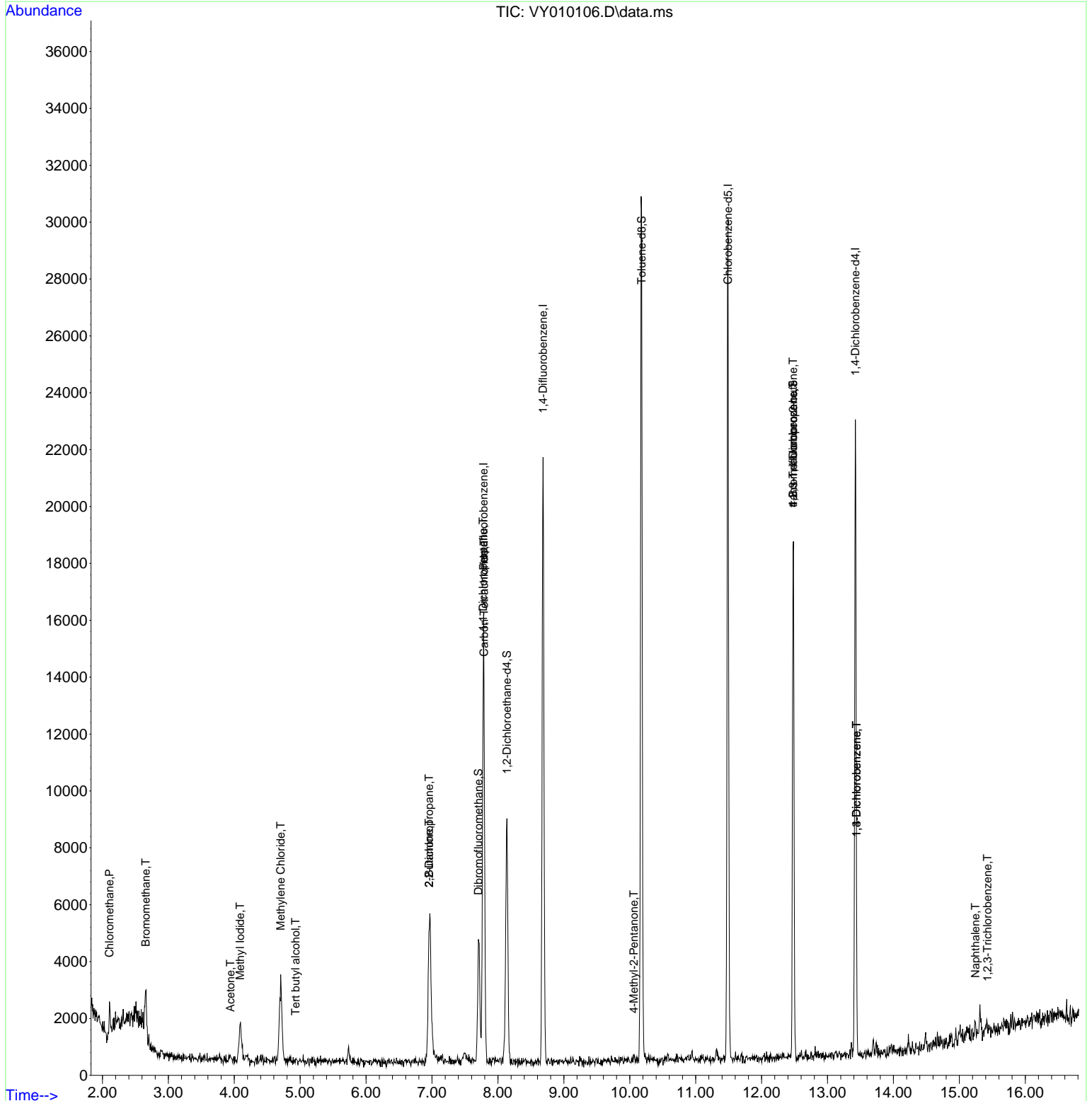
Internal Standards						
1) Pentafluorobenzene	7.783	168	12331	50.000	ug/l	0.00
34) 1,4-Difluorobenzene	8.685	114	19581	50.000	ug/l	0.00
63) Chlorobenzene-d5	11.489	117	17728	50.000	ug/l	0.00
72) 1,4-Dichlorobenzene-d4	13.422	152	6589	50.000	ug/l	0.00
System Monitoring Compounds						
33) 1,2-Dichloroethane-d4	8.136	65	6415	63.513	ug/l	0.00
Spiked Amount	50.000	Range	50 - 163	Recovery	=	127.020%
35) Dibromofluoromethane	7.703	113	3313	30.027	ug/l	0.00
Spiked Amount	50.000	Range	54 - 147	Recovery	=	60.060%
50) Toluene-d8	10.179	98	22373	54.115	ug/l	0.00
Spiked Amount	50.000	Range	49 - 140	Recovery	=	108.220%
62) 4-Bromofluorobenzene	12.477	95	6057	41.004	ug/l	0.00
Spiked Amount	50.000	Range	25 - 144	Recovery	=	82.000%
Target Compounds						
						Qvalue
3) Chloromethane	2.107	50	691	6.683	ug/l #	82
5) Bromomethane	2.655	94	944	11.070	ug/l	94
10) Methyl Iodide	4.088	142	2387	16.309	ug/l #	97
11) Tert butyl alcohol	4.929	59	45	14.572	ug/l #	73
16) Acetone	3.942	43	282	11.155	ug/l #	40
20) Methylene Chloride	4.704	84	2241	8.958	ug/l #	86
25) 2-Butanone	6.954	43	239	5.878	ug/l #	46
26) 2,2-Dichloropropane	6.954	77	372	1.953	ug/l #	50
36) 1,1-Dichloropropene	7.777	75	842	4.781	ug/l #	42
38) Carbon Tetrachloride	7.789	117	1155	6.253	ug/l #	12
51) 4-Methyl-2-Pentanone	10.063	43	119	1.363	ug/l #	34
76) 1,2,3-Trichloropropane	12.477	75	2609	42.280	ug/l #	100
81) trans-1,4-Dichloro-2-b...	12.477	75	2609	84.919	ug/l #	18
87) 1,3-Dichlorobenzene	13.440	146	261	1.202	ug/l	92
88) 1,4-Dichlorobenzene	13.440	146	261	1.201	ug/l	93
95) Naphthalene	15.245	128	373	5.275	ug/l #	69
96) 1,2,3-Trichlorobenzene	15.428	180	123	1.235	ug/l #	71

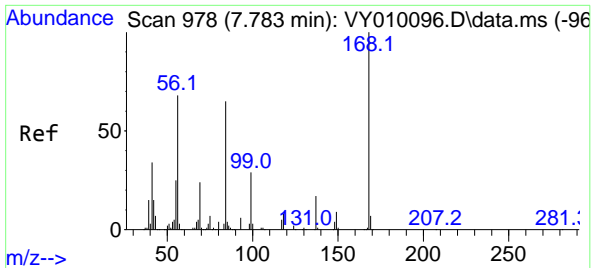
(#) = qualifier out of range (m) = manual integration (+) = signals summed

Data Path : Z:\voasrv\HPCHEM1\MSVOA_Y\Data\VY081922\
 Data File : VY010106.D
 Acq On : 19 Aug 2022 16:17
 Operator : KP/MD
 Sample : N4214-04RE
 Misc : 5.03g/5.0mL/MSVOA_Y/SOIL
 ALS Vial : 16 Sample Multiplier: 1

Instrument :
 MSVOA_Y
 ClientSampleId :
 ETGI-357

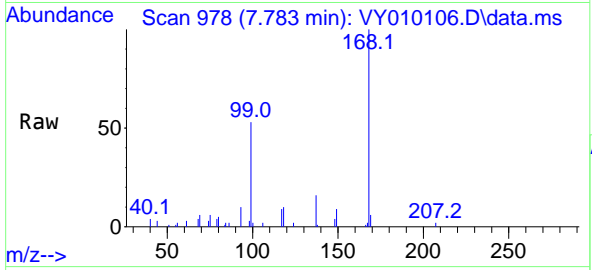
Quant Time: Aug 22 02:42:05 2022
 Quant Method : Z:\voasrv\HPCHEM1\MSVOA_Y\methods\82Y081922S.M
 Quant Title : SW846 8260
 QLast Update : Mon Aug 22 02:37:07 2022
 Response via : Initial Calibration



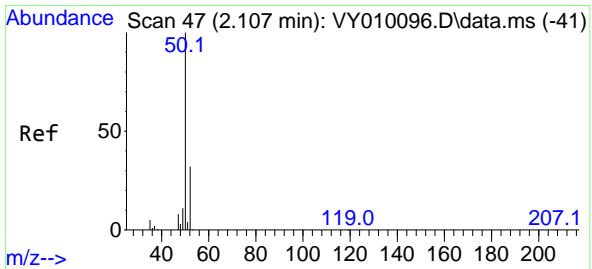
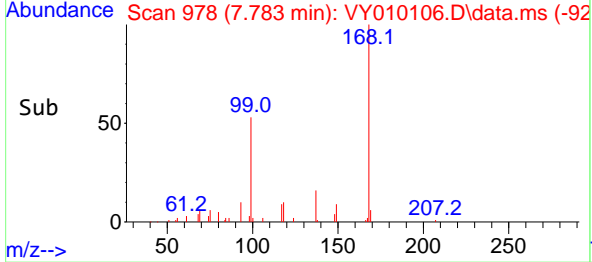
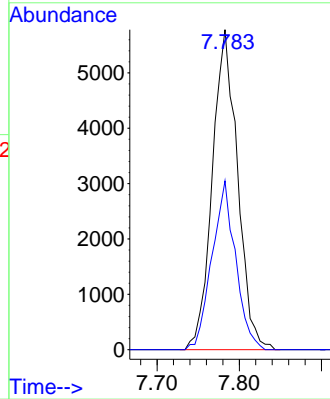


#1
 Pentafluorobenzene
 Concen: 50.000 ug/l
 RT: 7.783 min Scan# 91
 Delta R.T. -0.000 min
 Lab File: VY010106.D
 Acq: 19 Aug 2022 16:17

Instrument : MSVOA_Y
 ClientSampleId : ETGI-357

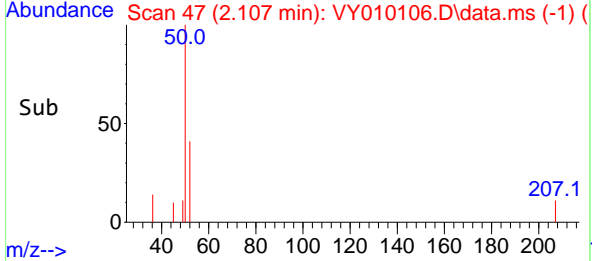
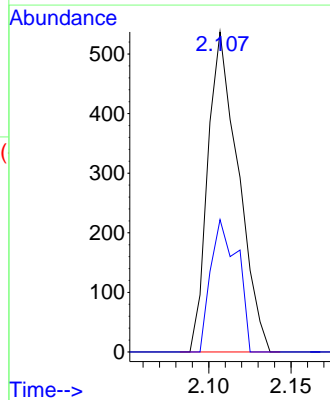
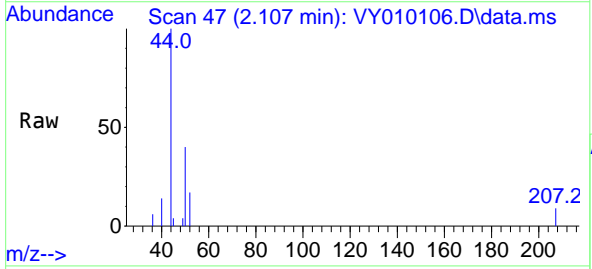


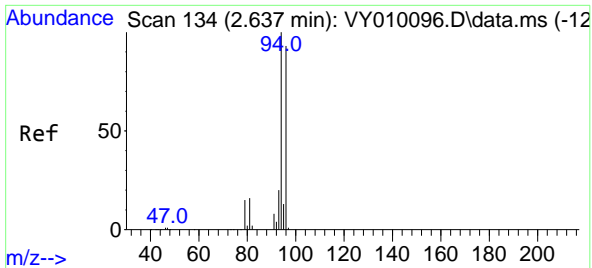
Tgt Ion:168 Resp: 12331
 Ion Ratio Lower Upper
 168 100
 99 52.7 40.7 61.1



#3
 Chloromethane
 Concen: 6.683 ug/l
 RT: 2.107 min Scan# 47
 Delta R.T. -0.000 min
 Lab File: VY010106.D
 Acq: 19 Aug 2022 16:17

Tgt Ion: 50 Resp: 691
 Ion Ratio Lower Upper
 50 100
 52 41.3 25.3 37.9#



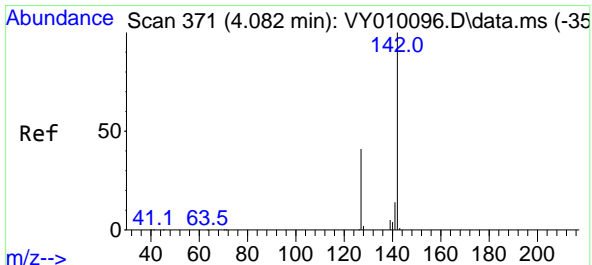
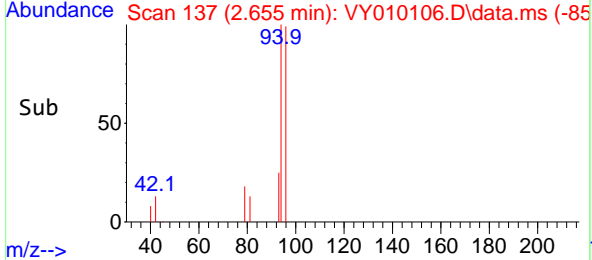
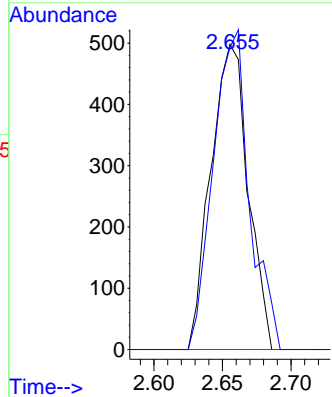
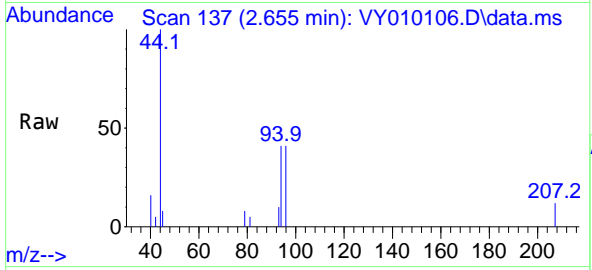


#5
 Bromomethane
 Concen: 11.070 ug/l
 RT: 2.655 min Scan# 111
 Delta R.T. 0.018 min
 Lab File: VY010106.D
 Acq: 19 Aug 2022 16:17

Instrument : MSVOA_Y
 ClientSampleId : ETGI-357

Tgt Ion: 94 Resp: 944

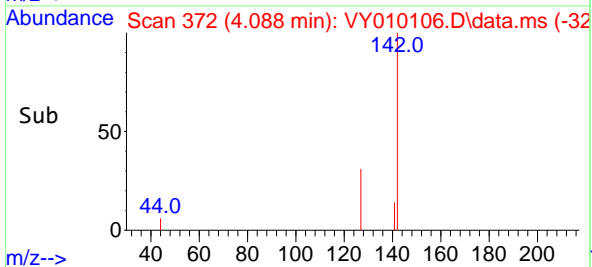
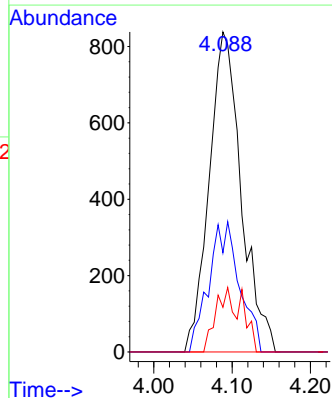
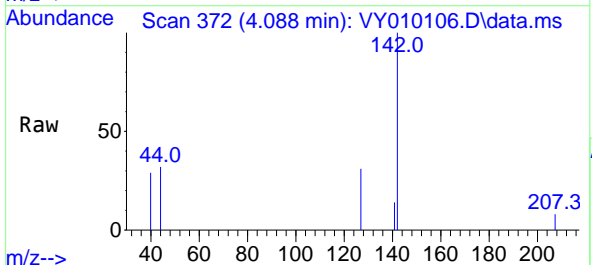
Ion	Ratio	Lower	Upper
94	100		
96	99.0	74.3	111.5

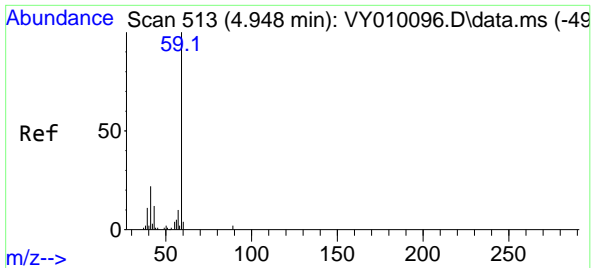


#10
 Methyl Iodide
 Concen: 16.309 ug/l
 RT: 4.088 min Scan# 372
 Delta R.T. 0.006 min
 Lab File: VY010106.D
 Acq: 19 Aug 2022 16:17

Tgt Ion: 142 Resp: 2387

Ion	Ratio	Lower	Upper
142	100		
127	39.1	32.2	48.4
141	11.5	11.7	17.5#

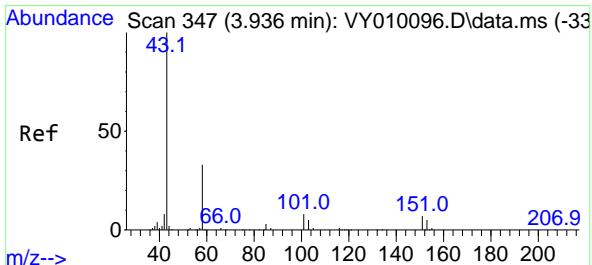
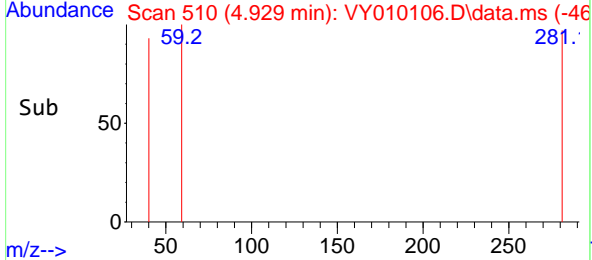
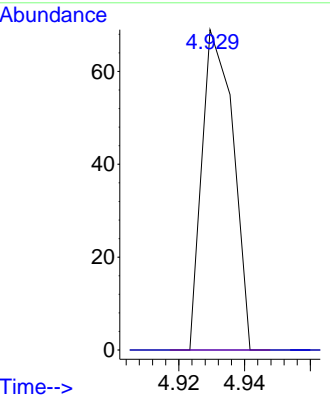
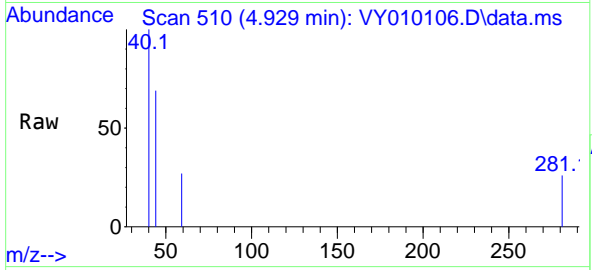




#11
 Tert butyl alcohol
 Concen: 14.572 ug/l
 RT: 4.929 min Scan# 513
 Delta R.T. -0.019 min
 Lab File: VY010106.D
 Acq: 19 Aug 2022 16:17

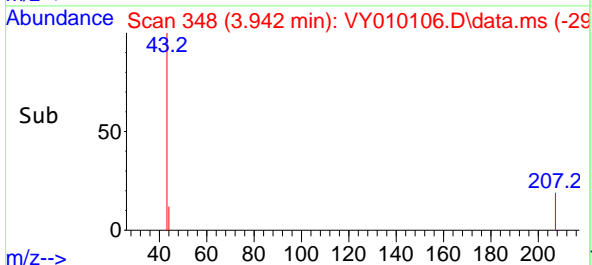
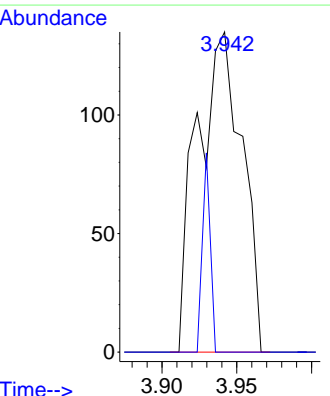
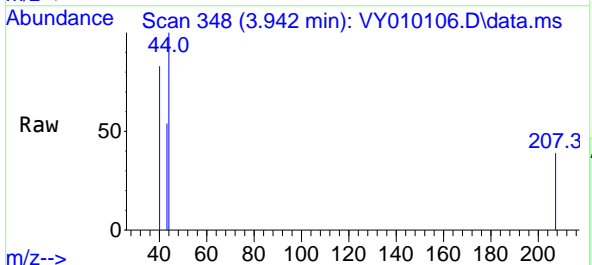
Instrument : MSVOA_Y
 ClientSampleId : ETGI-357

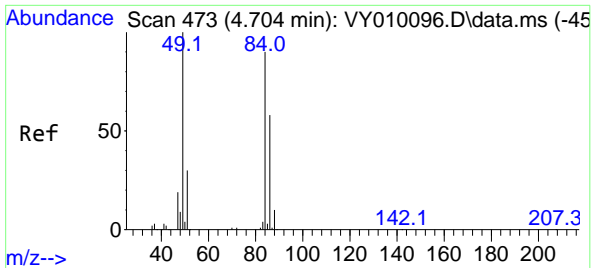
Tgt Ion: 59 Resp: 45
 Ion Ratio Lower Upper
 59 100
 57 0.0 8.2 12.2#



#16
 Acetone
 Concen: 11.155 ug/l
 RT: 3.942 min Scan# 348
 Delta R.T. 0.006 min
 Lab File: VY010106.D
 Acq: 19 Aug 2022 16:17

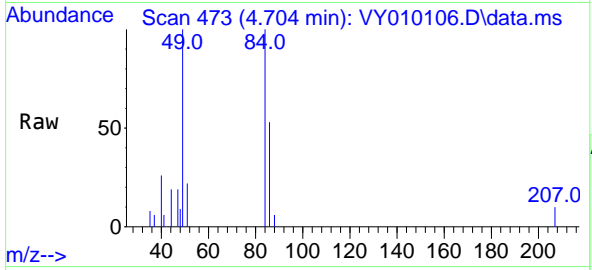
Tgt Ion: 43 Resp: 282
 Ion Ratio Lower Upper
 43 100
 58 0.0 27.4 41.0#





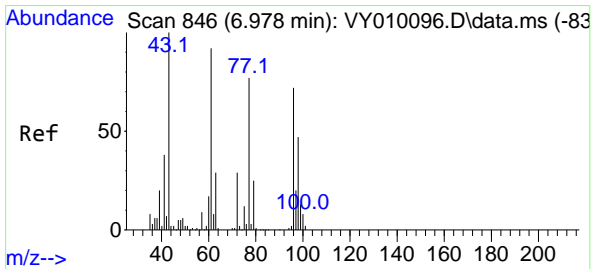
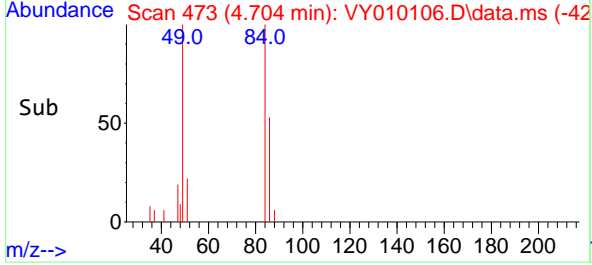
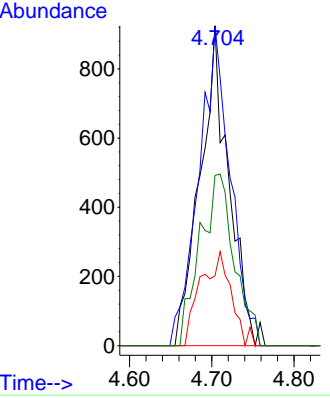
#20
 Methylene Chloride
 Concen: 8.958 ug/l
 RT: 4.704 min Scan# 41
 Delta R.T. -0.000 min
 Lab File: VY010106.D
 Acq: 19 Aug 2022 16:17

Instrument : MSVOA_Y
 ClientSampleId : ETGI-357

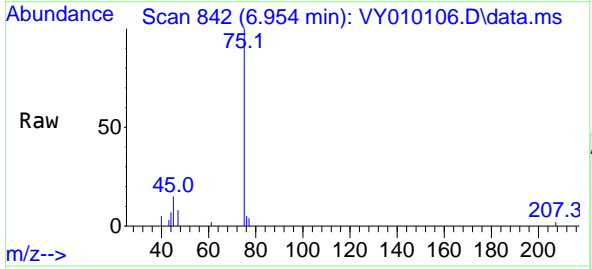


Tgt Ion: 84 Resp: 2241

Ion	Ratio	Lower	Upper
84	100		
49	99.8	89.0	133.4
51	21.8	27.0	40.6#
86	53.2	51.8	77.6

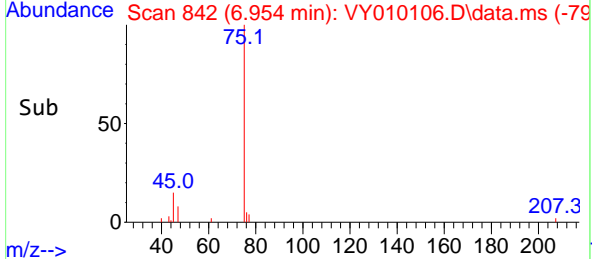
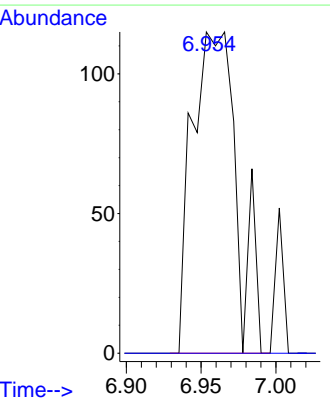


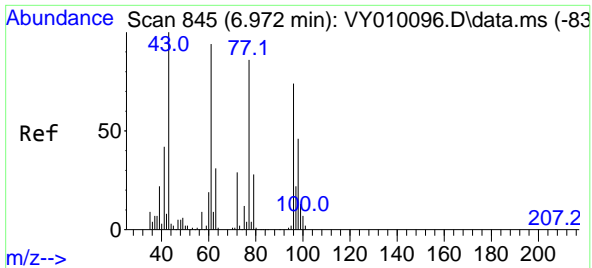
#25
 2-Butanone
 Concen: 5.878 ug/l
 RT: 6.954 min Scan# 842
 Delta R.T. -0.024 min
 Lab File: VY010106.D
 Acq: 19 Aug 2022 16:17



Tgt Ion: 43 Resp: 239

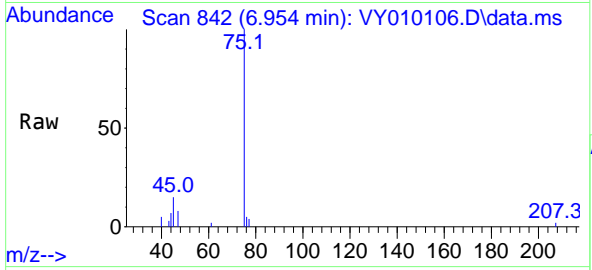
Ion	Ratio	Lower	Upper
43	100		
72	0.0	23.2	34.8#



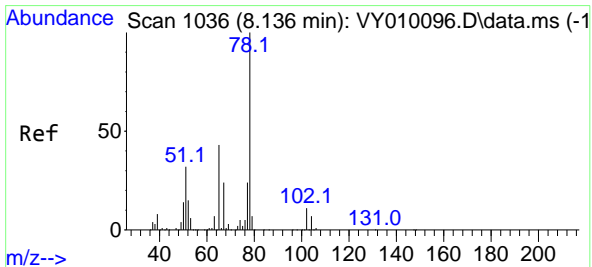
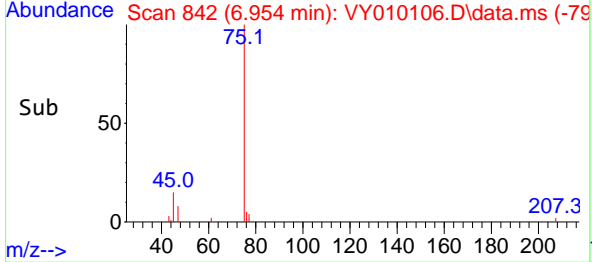
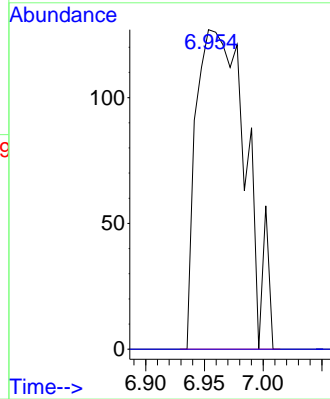


#26
 2,2-Dichloropropane
 Concen: 1.953 ug/l
 RT: 6.954 min Scan# 845
 Delta R.T. -0.019 min
 Lab File: VY010106.D
 Acq: 19 Aug 2022 16:17

Instrument : MSVOA_Y
 ClientSampleId : ETGI-357

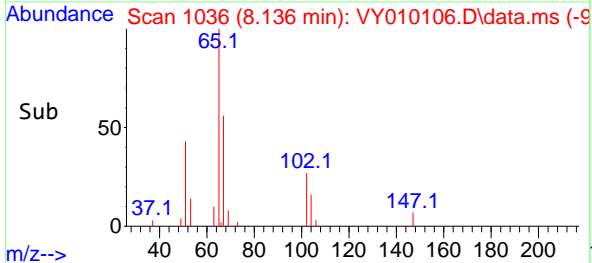
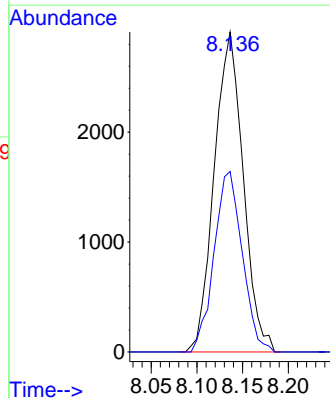
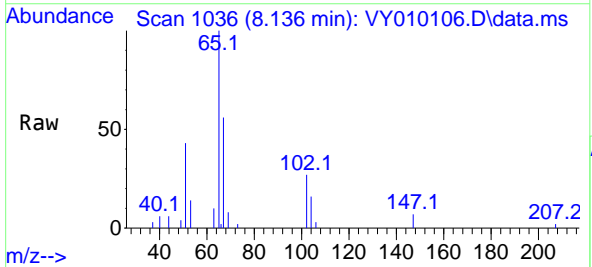


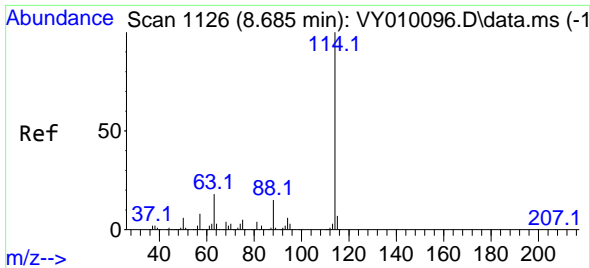
Tgt Ion: 77 Resp: 372
 Ion Ratio Lower Upper
 77 100
 97 0.0 12.4 37.4#



#33
 1,2-Dichloroethane-d4
 Concen: 63.513 ug/l
 RT: 8.136 min Scan# 1036
 Delta R.T. 0.000 min
 Lab File: VY010106.D
 Acq: 19 Aug 2022 16:17

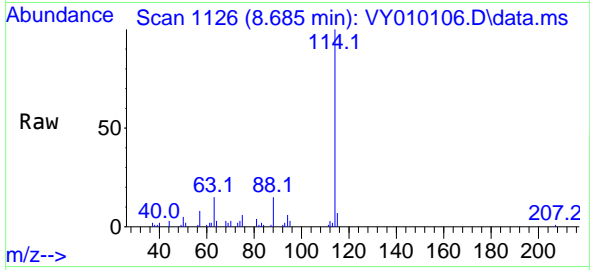
Tgt Ion: 65 Resp: 6415
 Ion Ratio Lower Upper
 65 100
 67 54.9 0.0 110.6





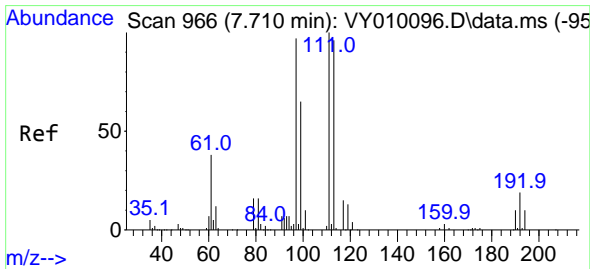
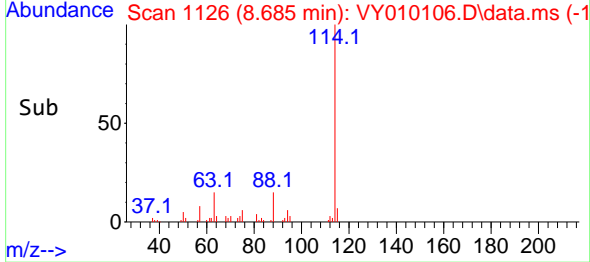
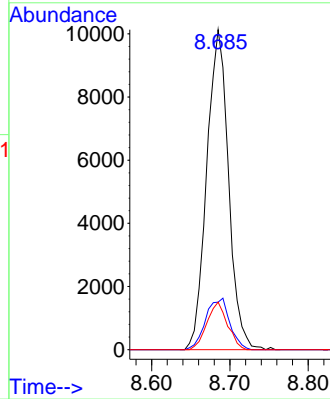
#34
 1,4-Difluorobenzene
 Concen: 50.000 ug/l
 RT: 8.685 min Scan# 1126
 Delta R.T. -0.000 min
 Lab File: VY010106.D
 Acq: 19 Aug 2022 16:17

Instrument : MSVOA_Y
 ClientSampleId : ETGI-357



Tgt Ion:114 Resp: 19581

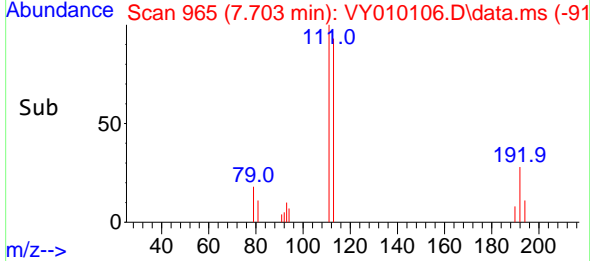
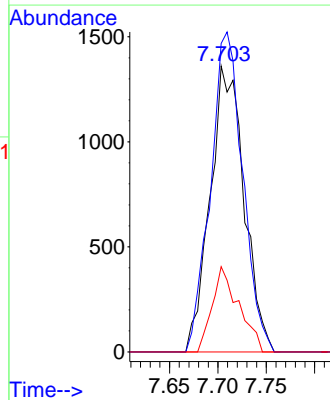
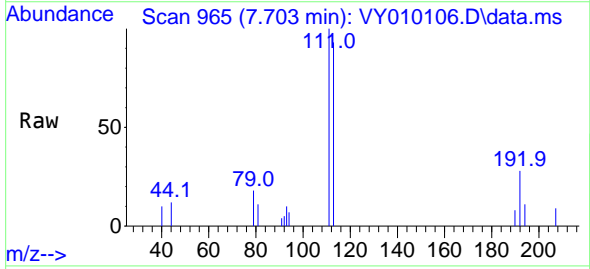
Ion	Ratio	Lower	Upper
114	100		
63	14.9	0.0	35.6
88	14.9	0.0	29.6

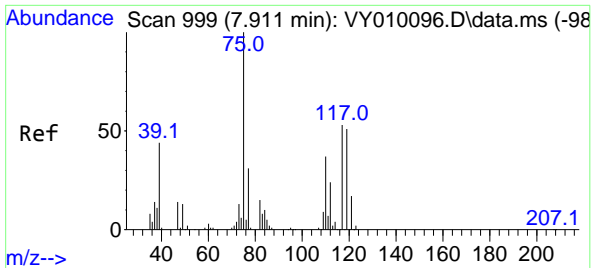


#35
 Dibromofluoromethane
 Concen: 30.027 ug/l
 RT: 7.703 min Scan# 965
 Delta R.T. -0.007 min
 Lab File: VY010106.D
 Acq: 19 Aug 2022 16:17

Tgt Ion:113 Resp: 3313

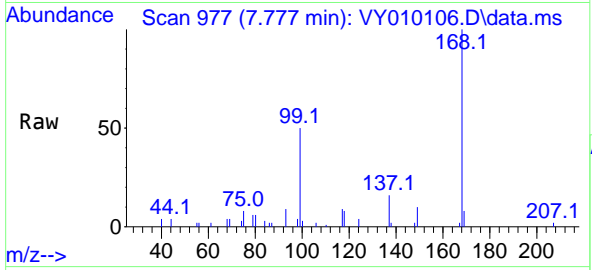
Ion	Ratio	Lower	Upper
113	100		
111	106.5	82.8	124.2
192	23.4	16.3	24.5



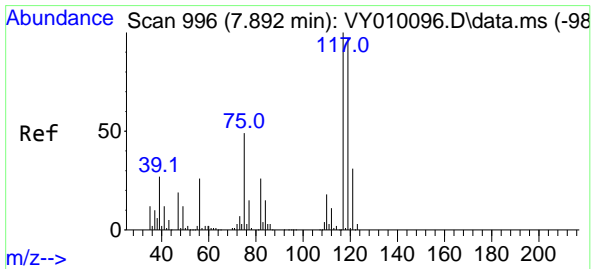
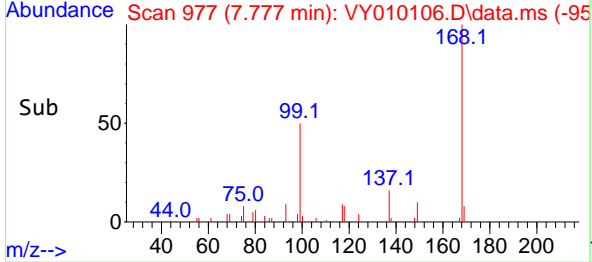
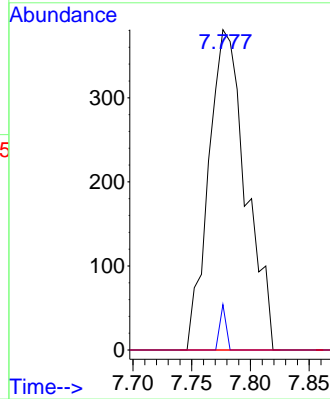


#36
 1,1-Dichloropropene
 Concen: 4.781 ug/l
 RT: 7.777 min Scan# 911
 Delta R.T. -0.134 min
 Lab File: VY010106.D
 Acq: 19 Aug 2022 16:17

Instrument : MSVOA_Y
 ClientSampleId : ETGI-357

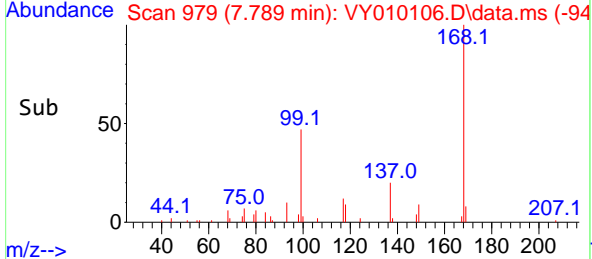
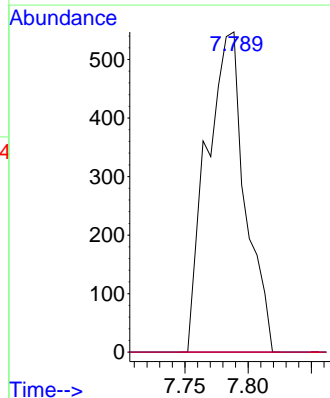
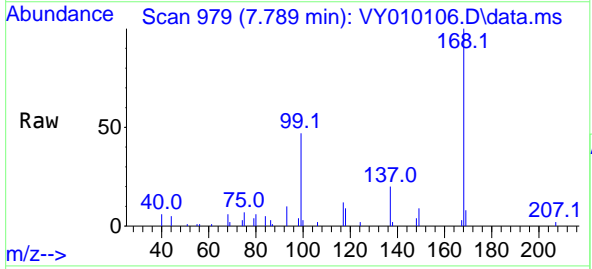


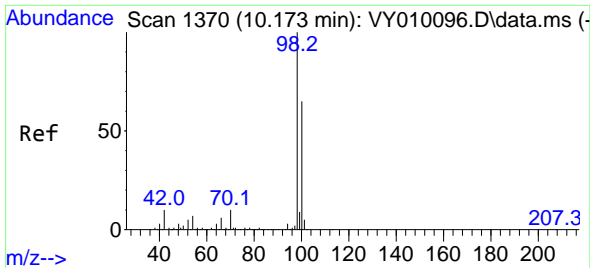
Tgt Ion: 75 Resp: 842
 Ion Ratio Lower Upper
 75 100
 110 2.4 18.6 56.0#
 77 0.0 24.9 37.3#



#38
 Carbon Tetrachloride
 Concen: 6.253 ug/l
 RT: 7.789 min Scan# 979
 Delta R.T. -0.103 min
 Lab File: VY010106.D
 Acq: 19 Aug 2022 16:17

Tgt Ion: 117 Resp: 1155
 Ion Ratio Lower Upper
 117 100
 119 0.0 77.1 115.7#
 121 0.0 24.7 37.1#

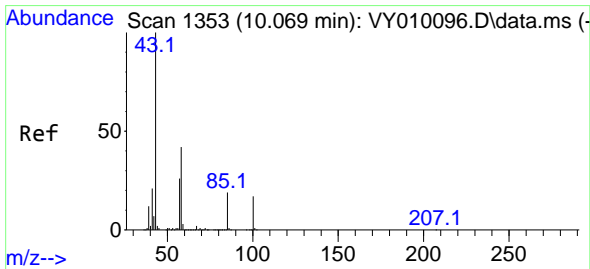
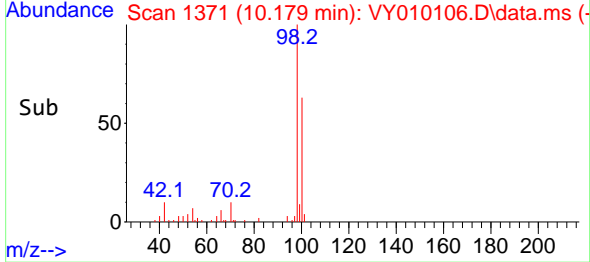
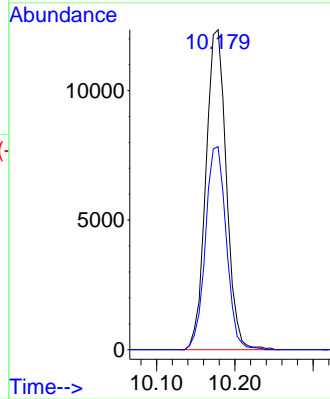
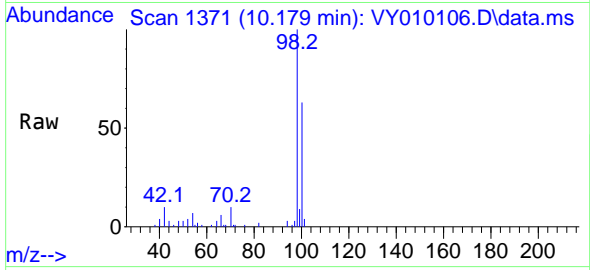




#50
 Toluene-d8
 Concen: 54.115 ug/l
 RT: 10.179 min Scan# 11
 Delta R.T. 0.006 min
 Lab File: VY010106.D
 Acq: 19 Aug 2022 16:17

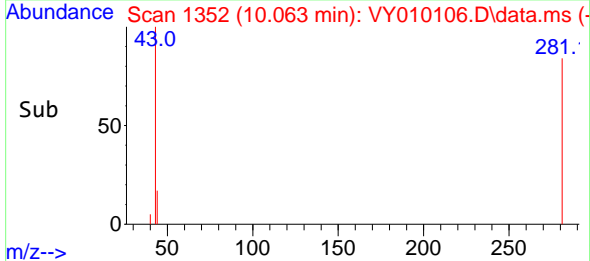
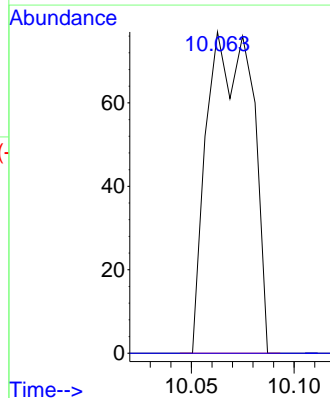
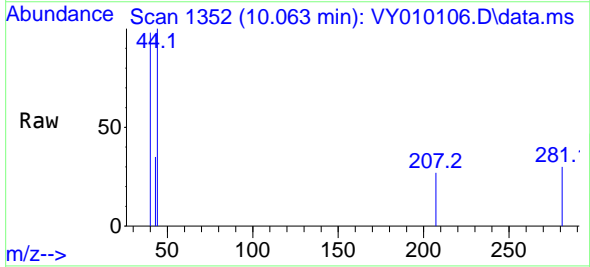
Instrument :
 MSVOA_Y
 ClientSampleId :
 ETGI-357

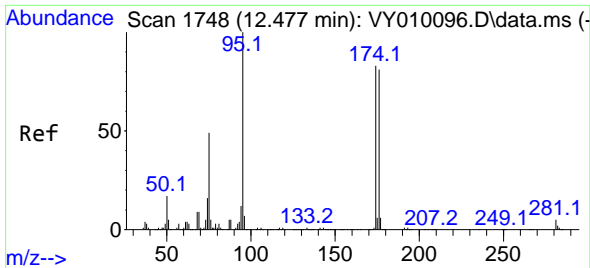
Tgt Ion: 98 Resp: 22373
 Ion Ratio Lower Upper
 98 100
 100 64.6 51.9 77.9



#51
 4-Methyl-2-Pentanone
 Concen: 1.363 ug/l
 RT: 10.063 min Scan# 1352
 Delta R.T. -0.006 min
 Lab File: VY010106.D
 Acq: 19 Aug 2022 16:17

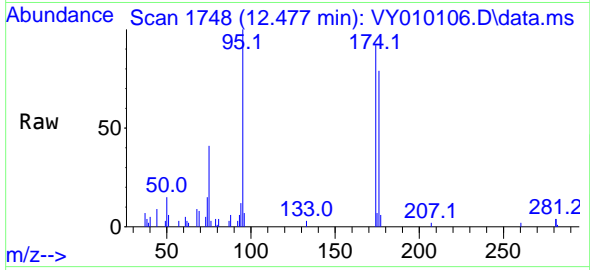
Tgt Ion: 43 Resp: 119
 Ion Ratio Lower Upper
 43 100
 58 0.0 33.3 49.9#



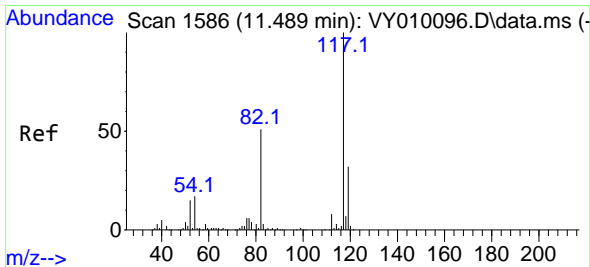
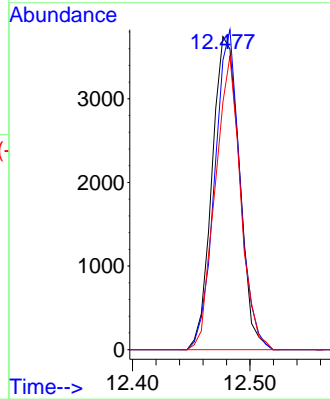
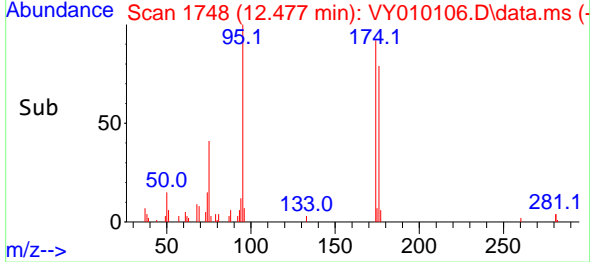


#62
 4-Bromofluorobenzene
 Concen: 41.004 ug/l
 RT: 12.477 min Scan# 11
 Delta R.T. -0.000 min
 Lab File: VY010106.D
 Acq: 19 Aug 2022 16:17

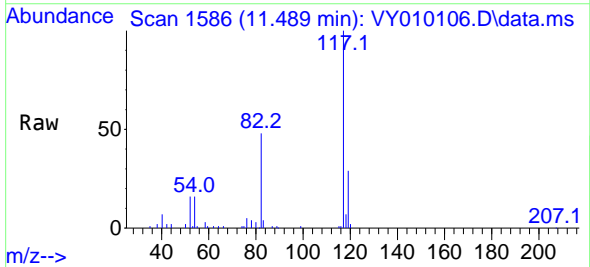
Instrument :
 MSVOA_Y
 ClientSampleId :
 ETGI-357



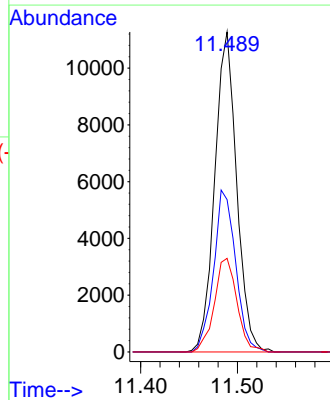
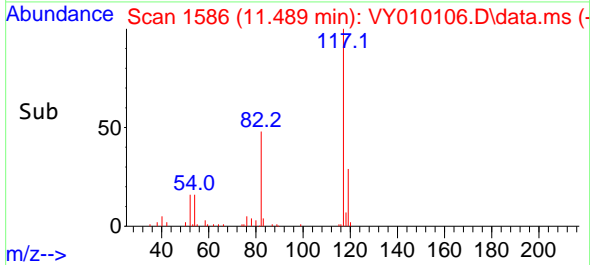
Tgt Ion: 95 Resp: 6057
 Ion Ratio Lower Upper
 95 100
 174 94.7 0.0 173.8
 176 86.9 0.0 167.2

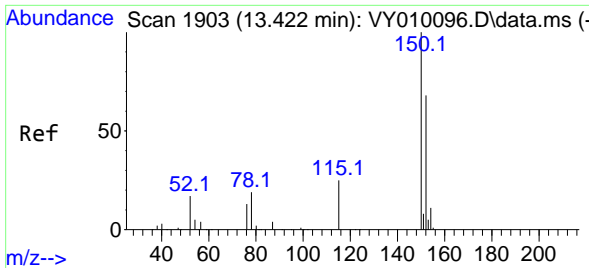


#63
 Chlorobenzene-d5
 Concen: 50.000 ug/l
 RT: 11.489 min Scan# 1586
 Delta R.T. -0.000 min
 Lab File: VY010106.D
 Acq: 19 Aug 2022 16:17



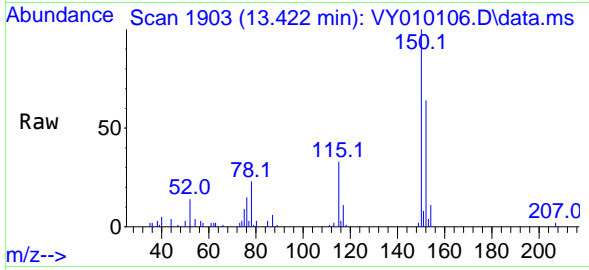
Tgt Ion: 117 Resp: 17728
 Ion Ratio Lower Upper
 117 100
 82 47.6 40.6 61.0
 119 29.2 25.8 38.8



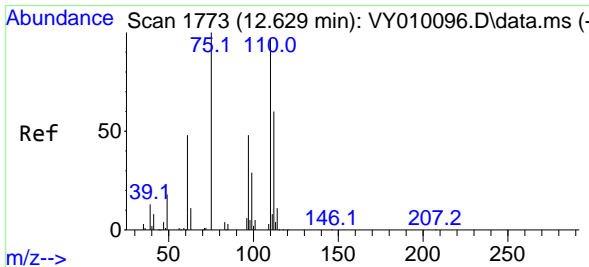
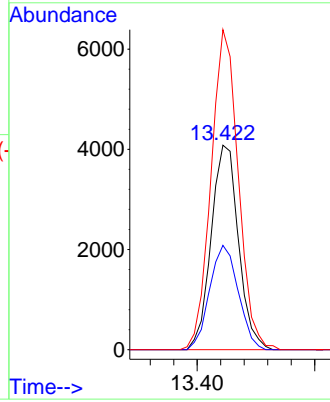
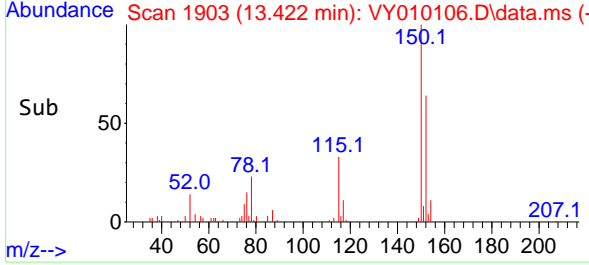


#72
 1,4-Dichlorobenzene-d4
 Concen: 50.000 ug/l
 RT: 13.422 min Scan# 1903
 Delta R.T. -0.000 min
 Lab File: VY010106.D
 Acq: 19 Aug 2022 16:17

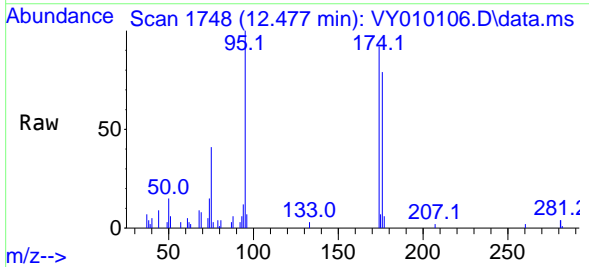
Instrument : MSVOA_Y
 ClientSampleId : ETGI-357



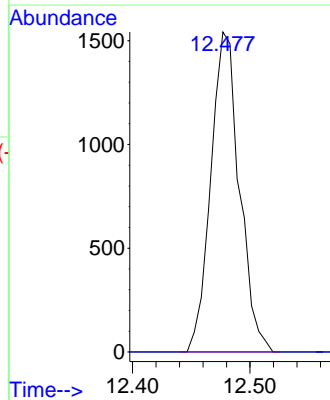
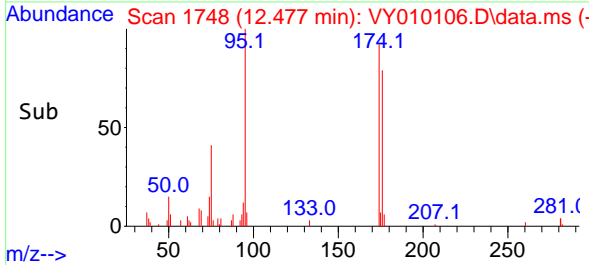
Tgt Ion:152 Resp: 6589
 Ion Ratio Lower Upper
 152 100
 115 53.3 28.1 84.2
 150 156.1 0.0 346.2

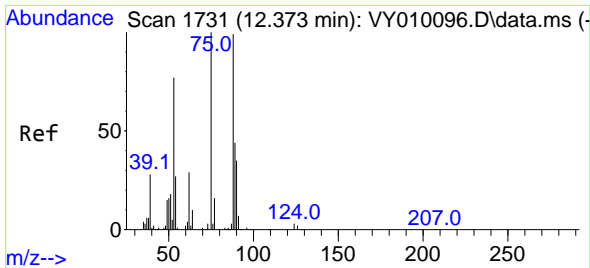


#76
 1,2,3-Trichloropropane
 Concen: 42.280 ug/l
 RT: 12.477 min Scan# 1748
 Delta R.T. -0.152 min
 Lab File: VY010106.D
 Acq: 19 Aug 2022 16:17



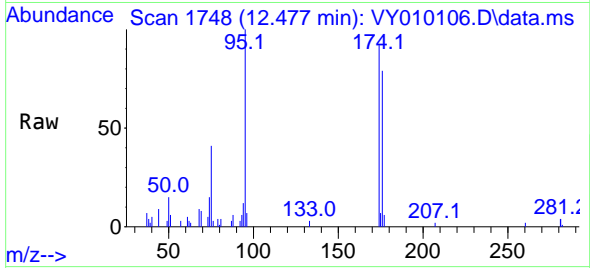
Tgt Ion: 75 Resp: 2609
 Ion Ratio Lower Upper
 75 100
 77 0.0 0.0 0.0





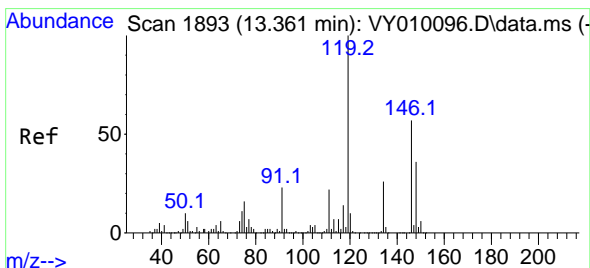
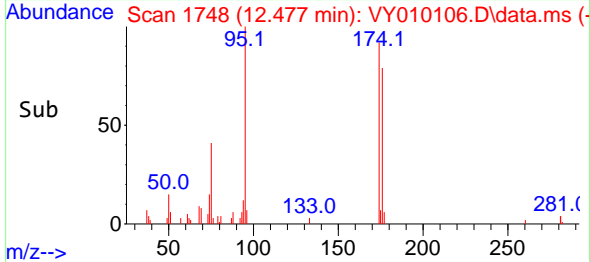
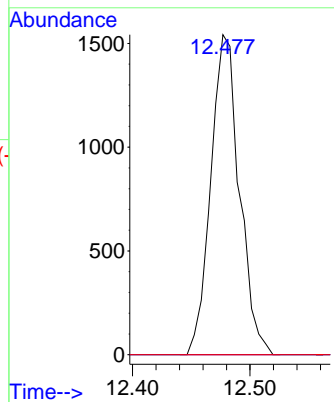
#81
 trans-1,4-Dichloro-2-butene
 Concen: 84.919 ug/l
 RT: 12.477 min Scan# 11
 Delta R.T. 0.104 min
 Lab File: VY010106.D
 Acq: 19 Aug 2022 16:17

Instrument :
 MSVOA_Y
 ClientSampleId :
 ETGI-357

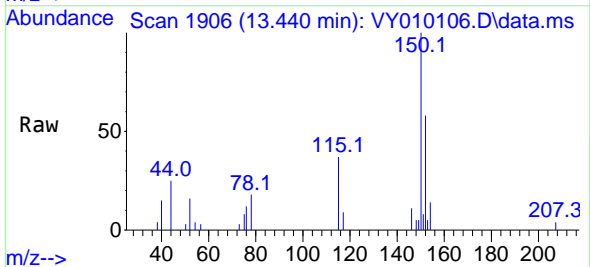


Tgt Ion: 75 Resp: 2609

Ion	Ratio	Lower	Upper
75	100		
53	0.0	62.6	94.0#
89	0.0	36.8	55.2#

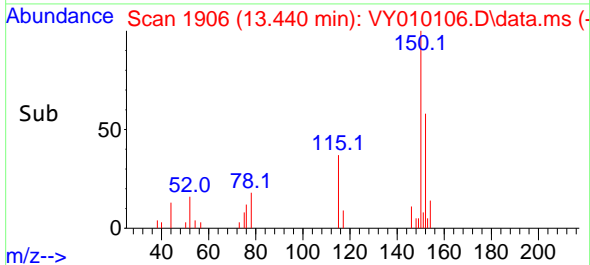
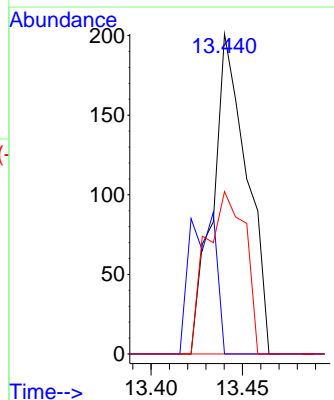


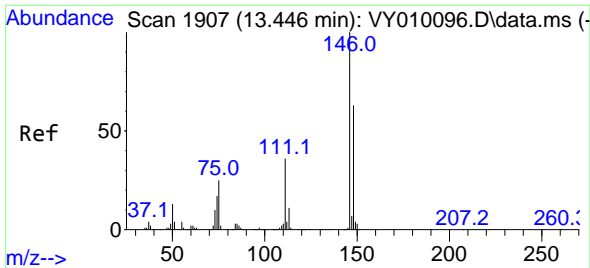
#87
 1,3-Dichlorobenzene
 Concen: 1.202 ug/l
 RT: 13.440 min Scan# 1906
 Delta R.T. 0.079 min
 Lab File: VY010106.D
 Acq: 19 Aug 2022 16:17



Tgt Ion: 146 Resp: 261

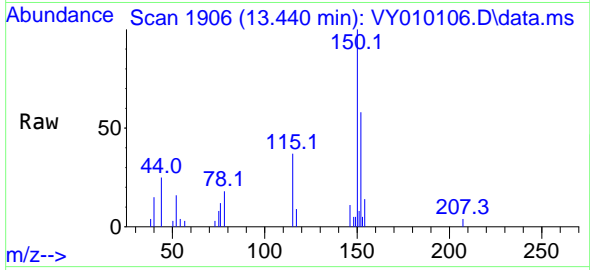
Ion	Ratio	Lower	Upper
146	100		
111	33.3	19.1	57.3
148	57.9	31.9	95.7





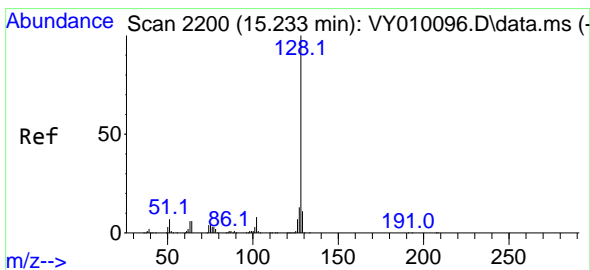
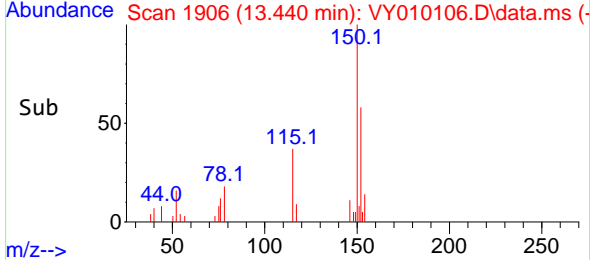
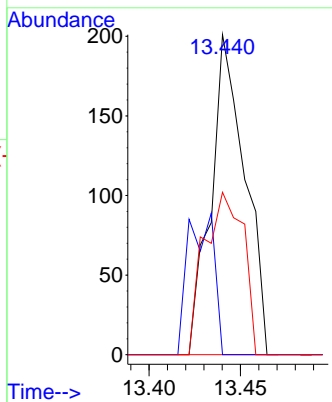
#88
 1,4-Dichlorobenzene
 Concen: 1.201 ug/l
 RT: 13.440 min Scan# 1906
 Delta R.T. -0.006 min
 Lab File: VY010106.D
 Acq: 19 Aug 2022 16:17

Instrument : MSVOA_Y
 ClientSampleId : ETGI-357

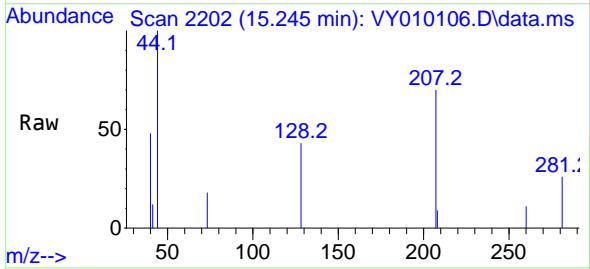


Tgt Ion:146 Resp: 261

Ion	Ratio	Lower	Upper
146	100		
111	33.3	18.7	56.1
148	57.9	31.8	95.4

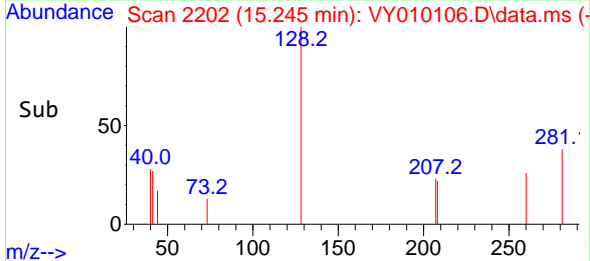
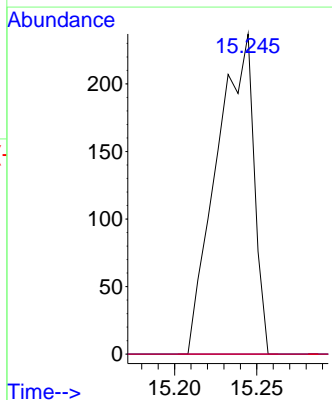


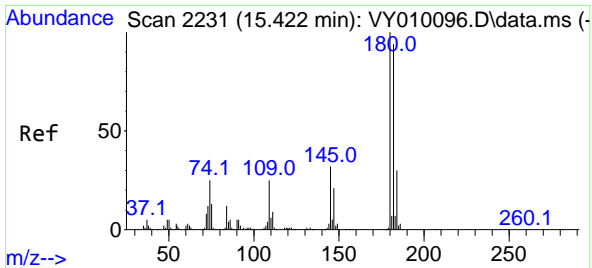
#95
 Naphthalene
 Concen: 5.275 ug/l
 RT: 15.245 min Scan# 2202
 Delta R.T. 0.012 min
 Lab File: VY010106.D
 Acq: 19 Aug 2022 16:17



Tgt Ion:128 Resp: 373

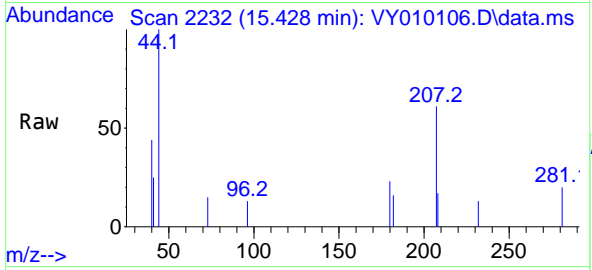
Ion	Ratio	Lower	Upper
128	100		
127	0.0	10.2	15.2#
129	0.0	8.9	13.3#





#96
 1,2,3-Trichlorobenzene
 Concen: 1.235 ug/l
 RT: 15.428 min Scan# 21
 Delta R.T. 0.006 min
 Lab File: VY010106.D
 Acq: 19 Aug 2022 16:17

Instrument :
 MSVOA_Y
 ClientSampleId :
 ETGI-357



Tgt Ion:180 Resp: 123

Ion	Ratio	Lower	Upper
180	100		
182	75.6	47.0	141.2
145	0.0	16.0	47.9#

