

Data Path : Z:\voasrv\HPCHEM1\MSVOA_Y\Data\VY082021\
 Data File : VY005806.D
 Acq On : 20 Aug 2021 20:20
 Operator : SY/MD
 Sample : M3463-27
 Misc : 5.23G/5ML/MSVOA_Y/SOIL
 ALS Vial : 24 Sample Multiplier: 1

Instrument :
 MSVOA_Y
 ClientSampled :

Quant Time: Aug 23 01:11:17 2021
 Quant Method : Z:\voasrv\HPCHEM1\MSVOA_Y\methods\82Y080221S.M
 Quant Title : SW846 8260
 QLast Update : Tue Aug 03 04:52:05 2021
 Response via : Initial Calibration

Compound	R.T.	QIon	Response	Conc	Units	Dev(Min)

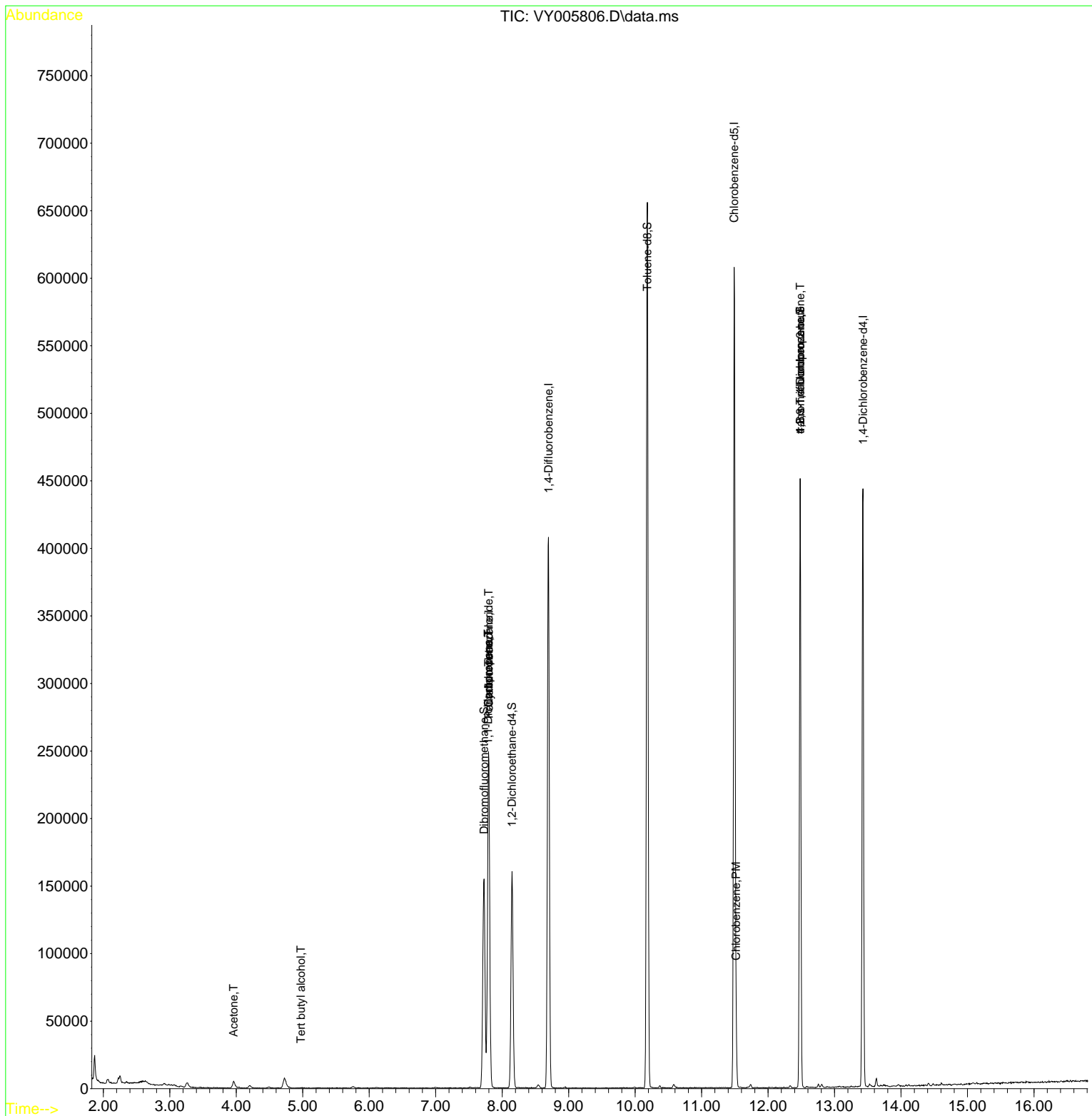
Internal Standards						
1) Pentafluorobenzene	7.801	168	202368	50.000	ug/l	0.00
34) 1,4-Difluorobenzene	8.697	114	347739	50.000	ug/l	0.00
63) Chlorobenzene-d5	11.489	117	319993	50.000	ug/l	0.00
72) 1,4-Dichlorobenzene-d4	13.428	152	115614	50.000	ug/l	0.00
System Monitoring Compounds						
33) 1,2-Dichloroethane-d4	8.149	65	127706	62.342	ug/l	0.00
Spiked Amount	50.000	Range	50 - 163	Recovery	=	124.680%
35) Dibromofluoromethane	7.728	113	104494	53.672	ug/l	0.00
Spiked Amount	50.000	Range	54 - 147	Recovery	=	107.340%
50) Toluene-d8	10.185	98	433641	53.108	ug/l	0.00
Spiked Amount	50.000	Range	49 - 140	Recovery	=	106.220%
62) 4-Bromofluorobenzene	12.483	95	122524	45.314	ug/l	0.00
Spiked Amount	50.000	Range	25 - 144	Recovery	=	90.620%
Target Compounds						
					Qvalue	
11) Tert butyl alcohol	4.972	59	670	3.309	ug/l #	73
16) Acetone	3.960	43	8459	16.379	ug/l	99
20) Methylene Chloride	4.722	84	4972	Below Cal		93
31) Cyclohexane	7.795	56	4025	1.146	ug/l #	13
36) 1,1-Dichloropropene	7.789	75	14704	4.508	ug/l #	50
38) Carbon Tetrachloride	7.795	117	18576	5.240	ug/l #	17
65) Chlorobenzene	11.520	112	22491	3.493	ug/l	95
76) 1,2,3-Trichloropropane	12.483	75	68042	56.792	ug/l #	100
81) trans-1,4-Dichloro-2-b...	12.483	75	68042	114.485	ug/l #	11

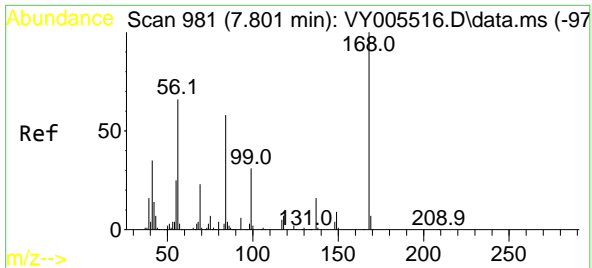
(#) = qualifier out of range (m) = manual integration (+) = signals summed

Data Path : Z:\voasrv\HPCHEM1\MSVOA_Y\Data\VY082021\
 Data File : VY005806.D
 Acq On : 20 Aug 2021 20:20
 Operator : SY/MD
 Sample : M3463-27
 Misc : 5.23G/5ML/MSVOA_Y/SOIL
 ALS Vial : 24 Sample Multiplier: 1

Instrument :
 MSVOA_Y
 ClientSampled :

Quant Time: Aug 23 01:11:17 2021
 Quant Method : Z:\voasrv\HPCHEM1\MSVOA_Y\methods\82Y080221S.M
 Quant Title : SW846 8260
 QLast Update : Tue Aug 03 04:52:05 2021
 Response via : Initial Calibration

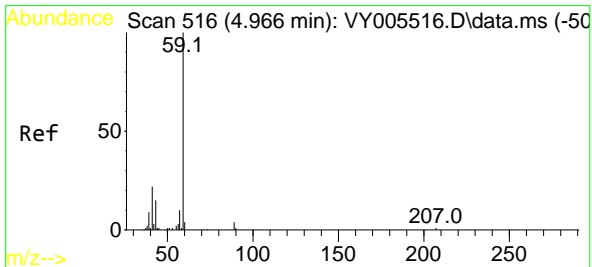
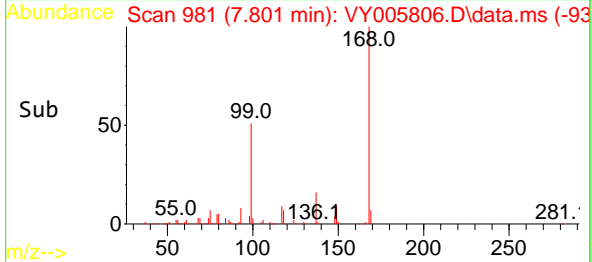
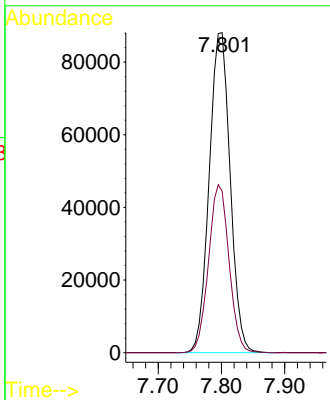
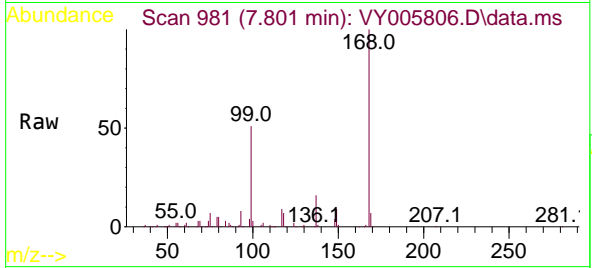




#1
 Pentafluorobenzene
 Concen: 50.000 ug/l
 RT: 7.801 min Scan# 981
 Delta R.T. 0.000 min
 Lab File: VY005806.D
 Acq: 20 Aug 2021 20:20

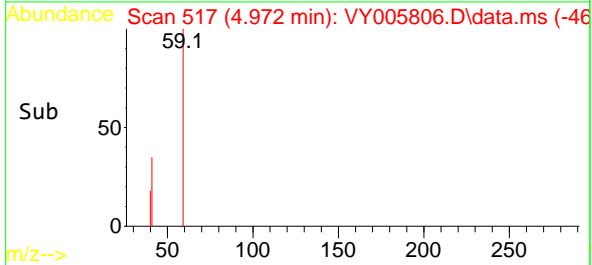
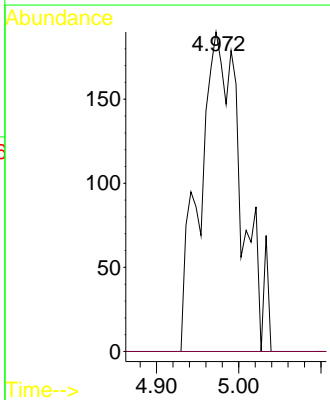
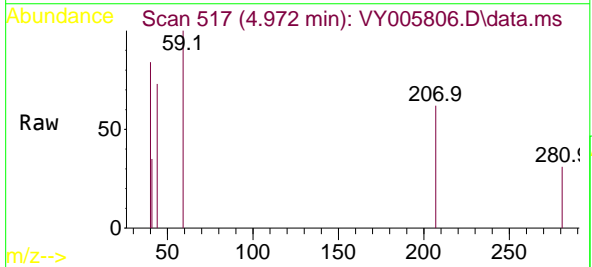
Instrument :
 MSVOA_Y
 ClientSampled :

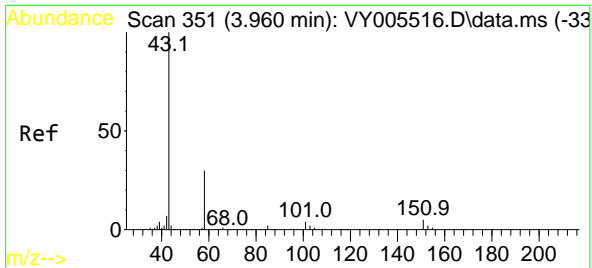
Tgt Ion:168 Resp: 202368
 Ion Ratio Lower Upper
 168 100
 99 50.5 38.9 58.3



#11
 Tert butyl alcohol
 Concen: 3.309 ug/l
 RT: 4.972 min Scan# 517
 Delta R.T. 0.006 min
 Lab File: VY005806.D
 Acq: 20 Aug 2021 20:20

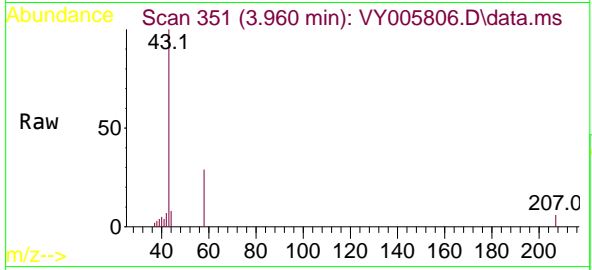
Tgt Ion: 59 Resp: 670
 Ion Ratio Lower Upper
 59 100
 57 0.0 8.0 12.0#



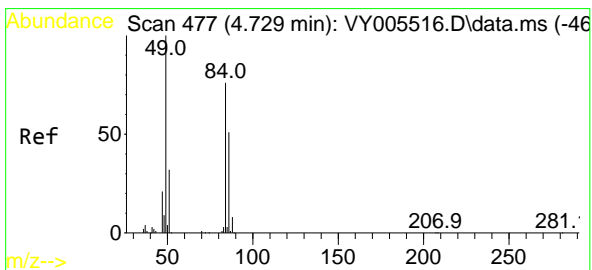
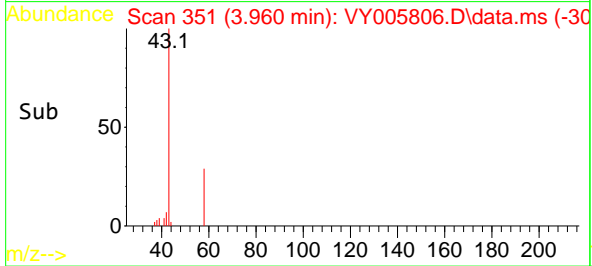
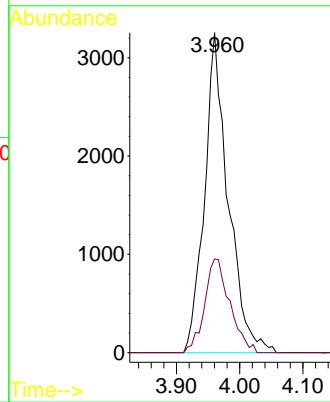


#16
 Acetone
 Concen: 16.379 ug/l
 RT: 3.960 min Scan# 351
 Delta R.T. -0.000 min
 Lab File: VY005806.D
 Acq: 20 Aug 2021 20:20

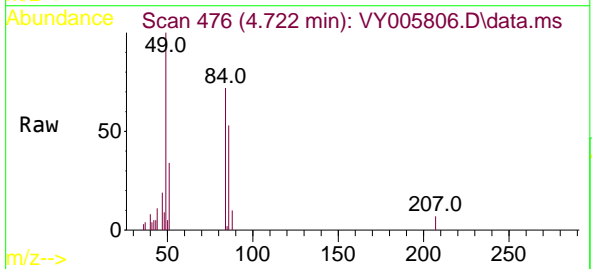
Instrument :
 MSVOA_Y
 ClientSampled :



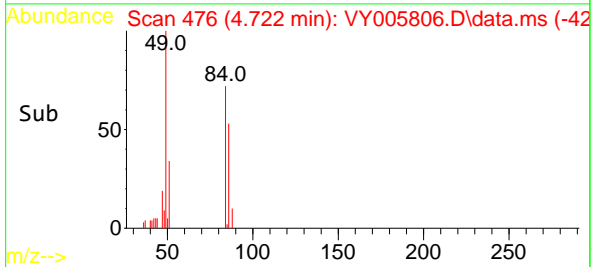
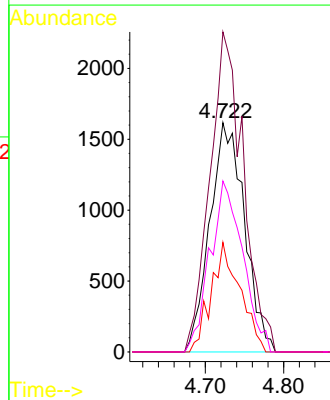
Tgt Ion: 43 Resp: 8459
 Ion Ratio Lower Upper
 43 100
 58 29.3 23.8 35.6

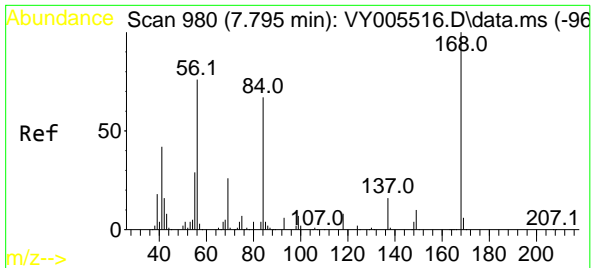


#20
 Methylene Chloride
 Concen: Below Cal
 RT: 4.722 min Scan# 476
 Delta R.T. -0.007 min
 Lab File: VY005806.D
 Acq: 20 Aug 2021 20:20



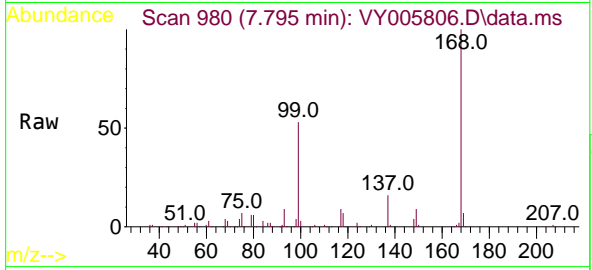
Tgt Ion: 84 Resp: 4972
 Ion Ratio Lower Upper
 84 100
 49 139.6 105.8 158.6
 51 47.8 33.4 50.2
 86 74.5 54.2 81.4





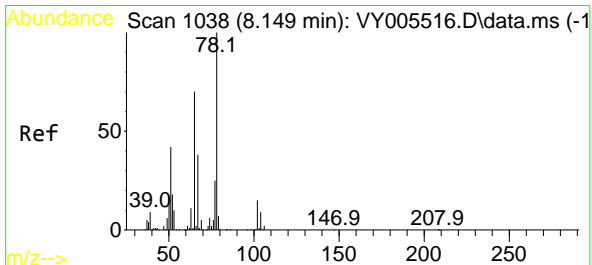
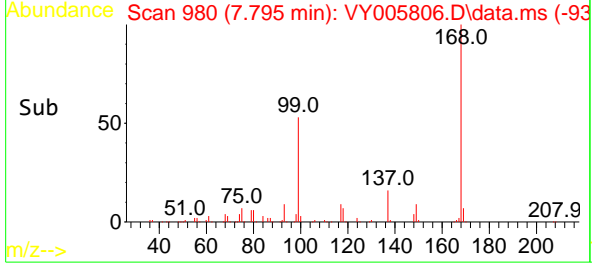
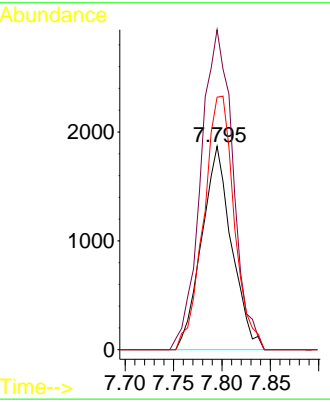
#31
 Cyclohexane
 Concen: 1.146 ug/l
 RT: 7.795 min Scan# 980
 Delta R.T. -0.000 min
 Lab File: VY005806.D
 Acq: 20 Aug 2021 20:20

Instrument :
 MSVOA_Y
 ClientSampled :

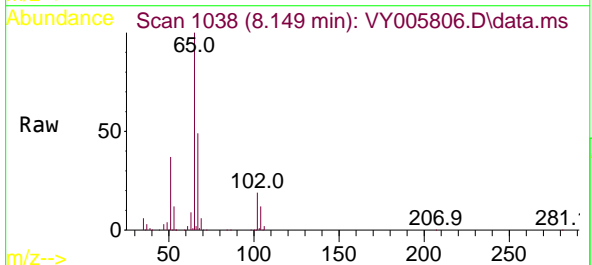


Tgt Ion: 56 Resp: 4025

Ion	Ratio	Lower	Upper
56	100		
69	157.4	27.7	41.5#
84	124.2	70.9	106.3#

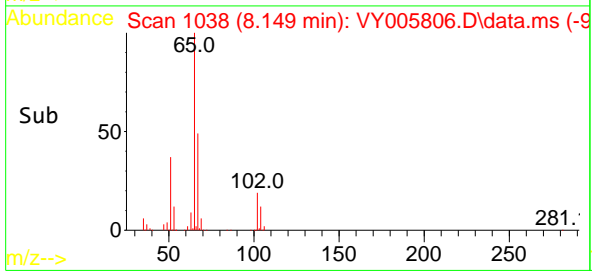
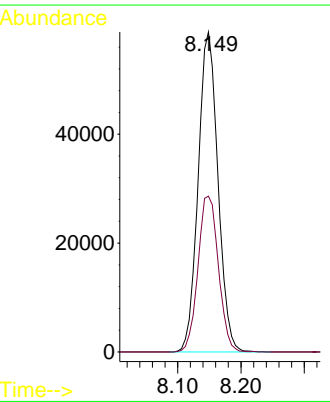


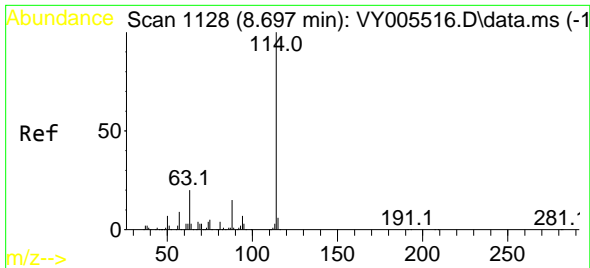
#33
 1,2-Dichloroethane-d4
 Concen: 62.342 ug/l
 RT: 8.149 min Scan# 1038
 Delta R.T. -0.000 min
 Lab File: VY005806.D
 Acq: 20 Aug 2021 20:20



Tgt Ion: 65 Resp: 127706

Ion	Ratio	Lower	Upper
65	100		
67	50.4	0.0	103.4

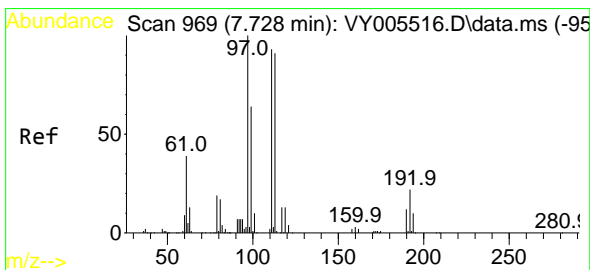
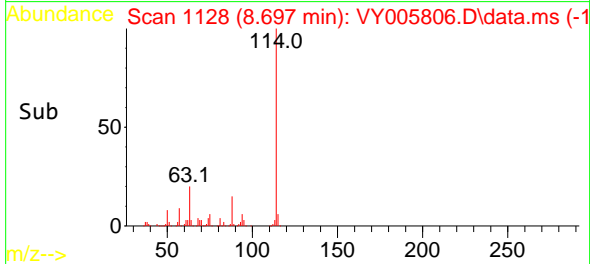
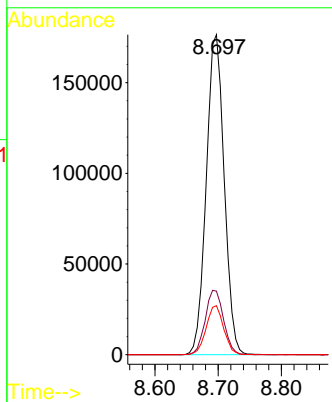
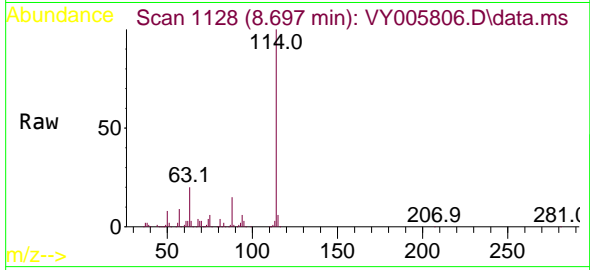




#34
 1,4-Difluorobenzene
 Concen: 50.000 ug/l
 RT: 8.697 min Scan# 1128
 Delta R.T. -0.000 min
 Lab File: VY005806.D
 Acq: 20 Aug 2021 20:20

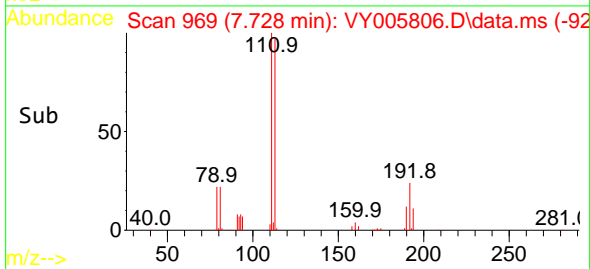
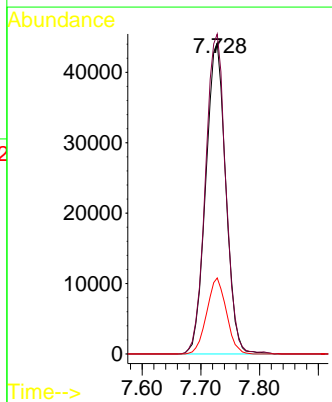
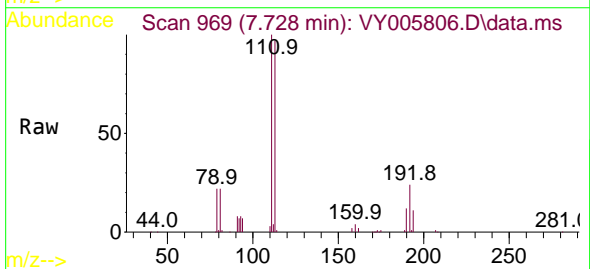
Instrument :
 MSVOA_Y
 ClientSampled :

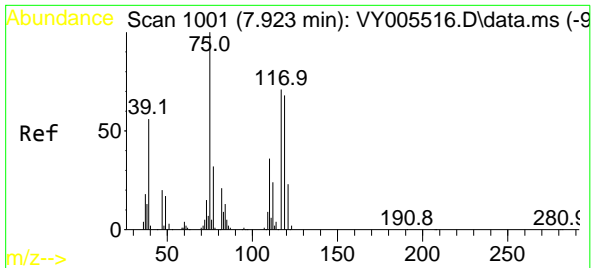
Tgt Ion	Resp	Lower	Upper
114	100		
63	19.8	0.0	39.2
88	15.3	0.0	30.8



#35
 Dibromofluoromethane
 Concen: 53.672 ug/l
 RT: 7.728 min Scan# 969
 Delta R.T. -0.000 min
 Lab File: VY005806.D
 Acq: 20 Aug 2021 20:20

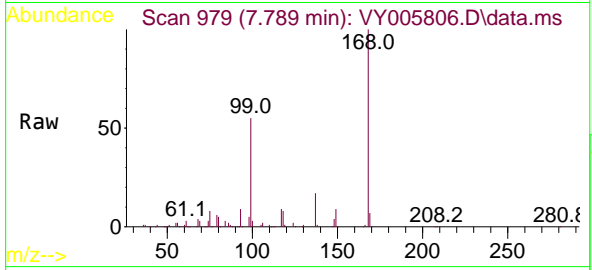
Tgt Ion	Resp	Lower	Upper
113	100		
111	104.2	81.9	122.9
192	23.9	19.2	28.8



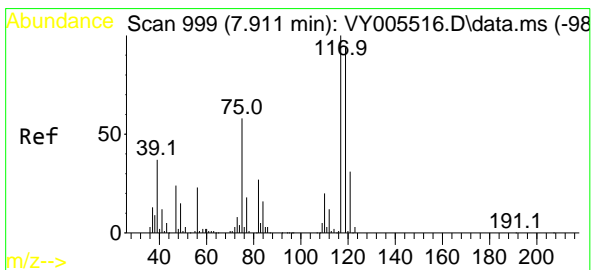
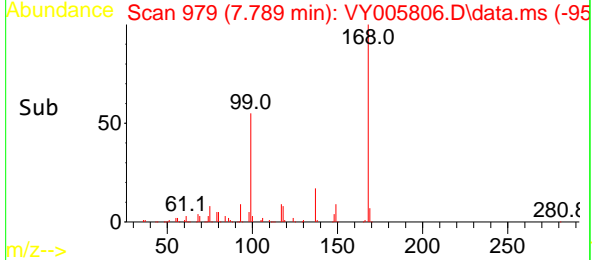
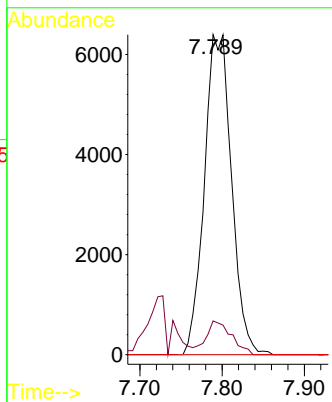


#36
 1,1-Dichloropropene
 Concen: 4.508 ug/l
 RT: 7.789 min Scan# 979
 Delta R.T. -0.134 min
 Lab File: VY005806.D
 Acq: 20 Aug 2021 20:20

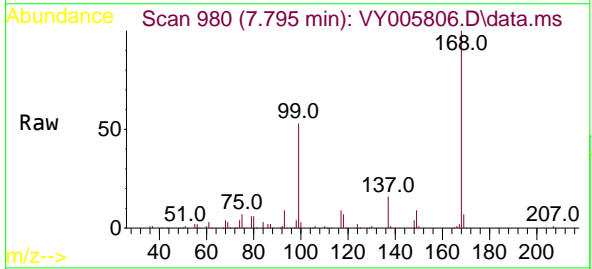
Instrument :
 MSVOA_Y
 ClientSampled :



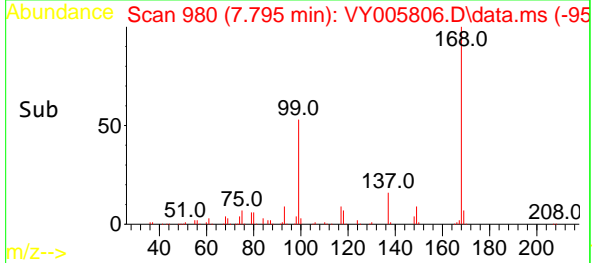
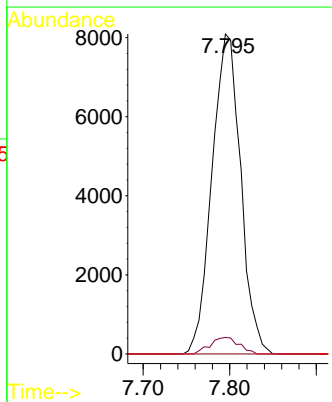
Tgt Ion	Resp	Lower	Upper
75	14704		
75	100		
110	9.8	18.1	54.1#
77	0.0	25.1	37.7#

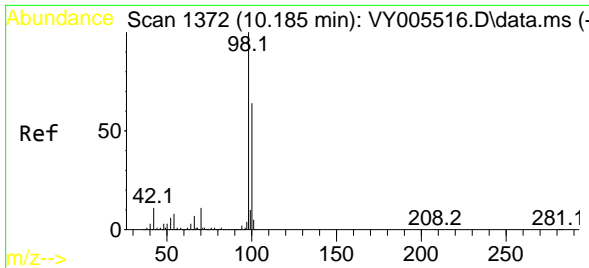


#38
 Carbon Tetrachloride
 Concen: 5.240 ug/l
 RT: 7.795 min Scan# 980
 Delta R.T. -0.116 min
 Lab File: VY005806.D
 Acq: 20 Aug 2021 20:20



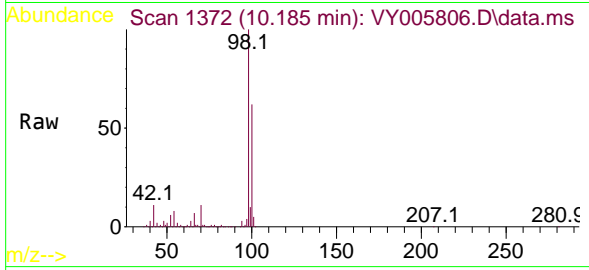
Tgt Ion	Resp	Lower	Upper
117	18576		
117	100		
119	5.1	75.4	113.0#
121	0.0	25.1	37.7#



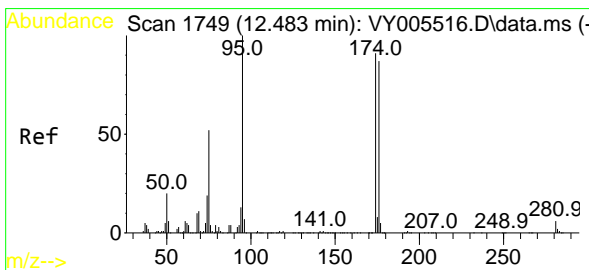
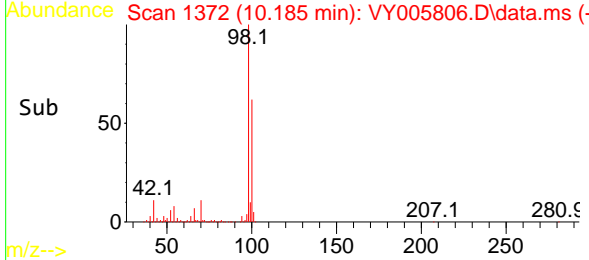
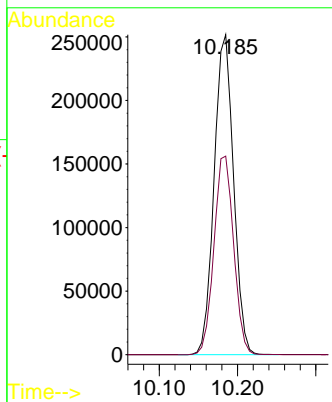


#50
 Toluene-d8
 Concen: 53.108 ug/l
 RT: 10.185 min Scan# 1372
 Delta R.T. -0.000 min
 Lab File: VY005806.D
 Acq: 20 Aug 2021 20:20

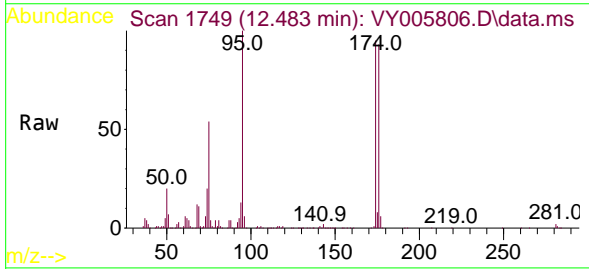
Instrument :
 MSVOA_Y
 ClientSampled :



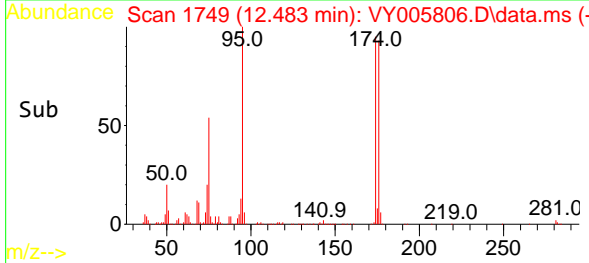
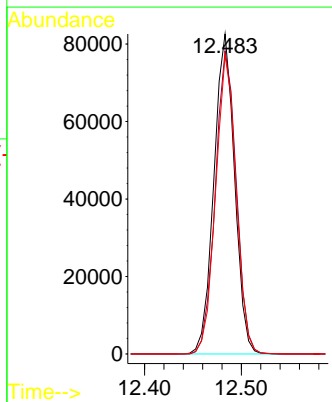
Tgt Ion: 98 Resp: 433641
 Ion Ratio Lower Upper
 98 100
 100 62.9 51.3 76.9

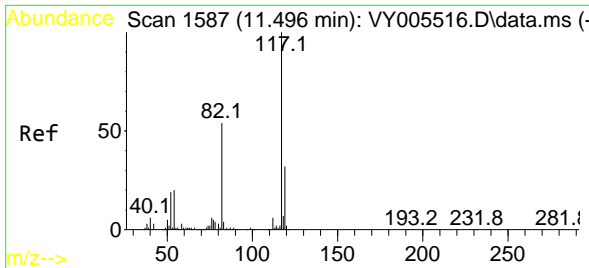


#62
 4-Bromofluorobenzene
 Concen: 45.314 ug/l
 RT: 12.483 min Scan# 1749
 Delta R.T. -0.000 min
 Lab File: VY005806.D
 Acq: 20 Aug 2021 20:20



Tgt Ion: 95 Resp: 122524
 Ion Ratio Lower Upper
 95 100
 174 96.0 0.0 191.4
 176 92.5 0.0 183.6

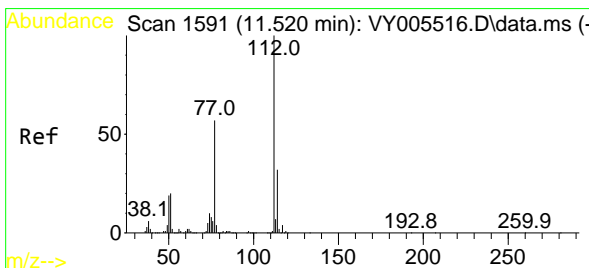
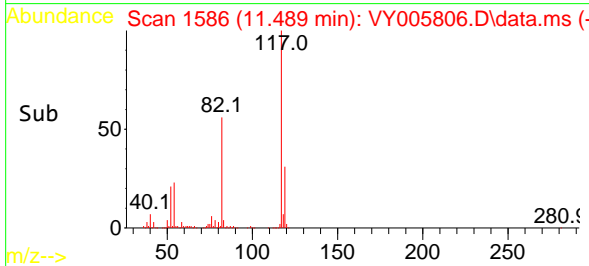
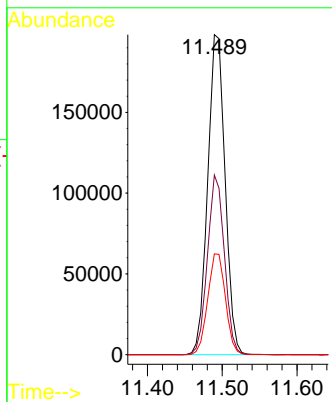
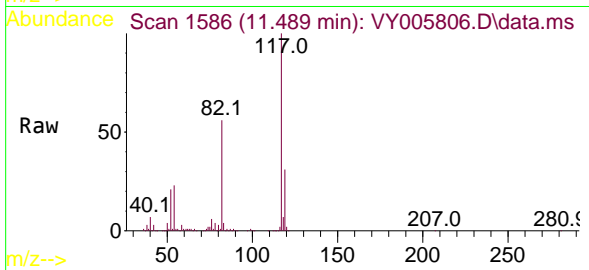




#63
Chlorobenzene-d5
Concen: 50.000 ug/l
RT: 11.489 min Scan# 1586
Delta R.T. -0.006 min
Lab File: VY005806.D
Acq: 20 Aug 2021 20:20

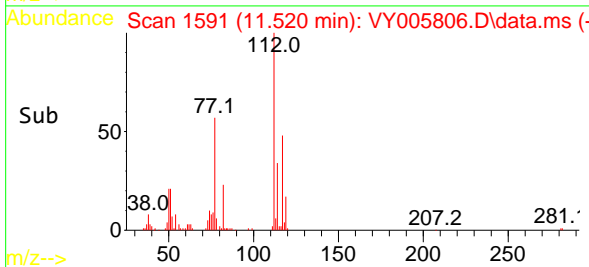
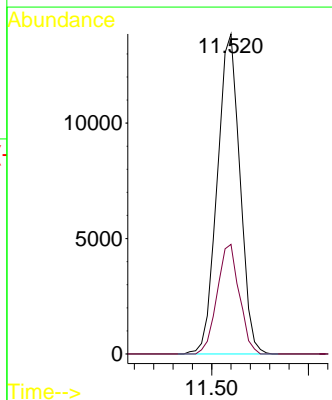
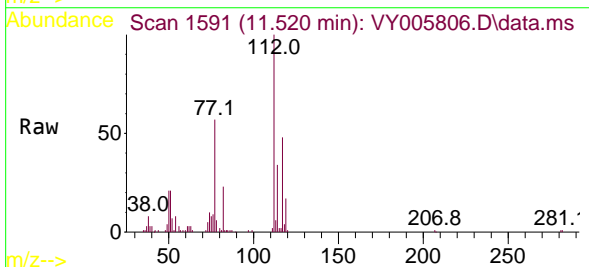
Instrument :
MSVOA_Y
ClientSampled :

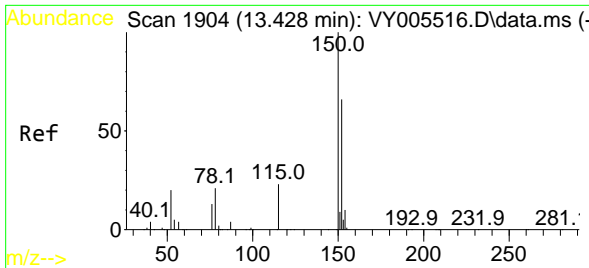
Tgt Ion:117 Resp: 319993
Ion Ratio Lower Upper
117 100
82 56.1 43.5 65.3
119 31.5 25.5 38.3



#65
Chlorobenzene
Concen: 3.493 ug/l
RT: 11.520 min Scan# 1591
Delta R.T. -0.000 min
Lab File: VY005806.D
Acq: 20 Aug 2021 20:20

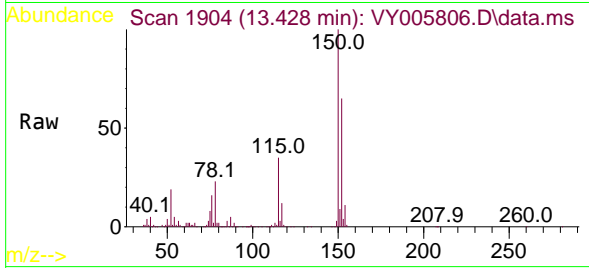
Tgt Ion:112 Resp: 22491
Ion Ratio Lower Upper
112 100
114 34.3 25.2 37.8



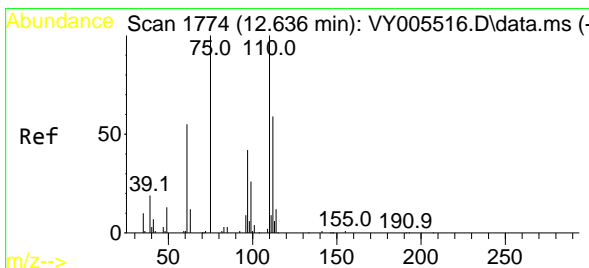
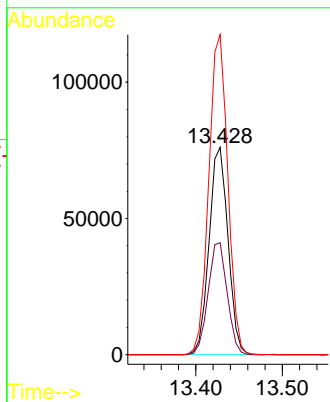
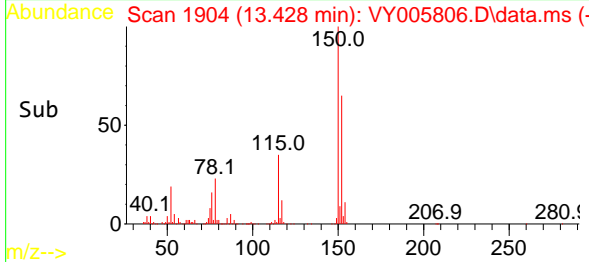


#72
 1,4-Dichlorobenzene-d4
 Concen: 50.000 ug/l
 RT: 13.428 min Scan# 1904
 Delta R.T. -0.000 min
 Lab File: VY005806.D
 Acq: 20 Aug 2021 20:20

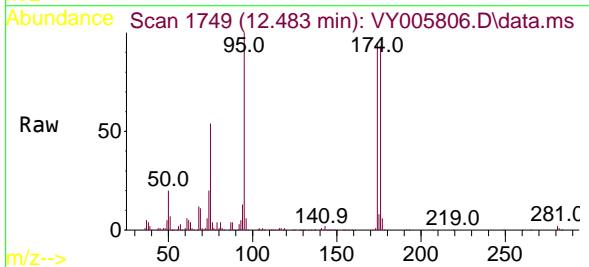
Instrument :
 MSVOA_Y
 ClientSampled :



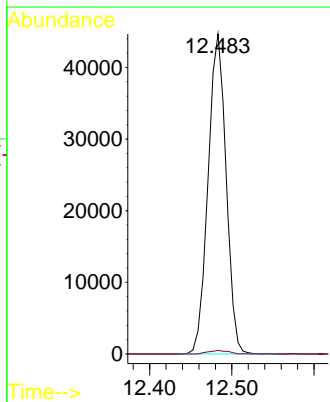
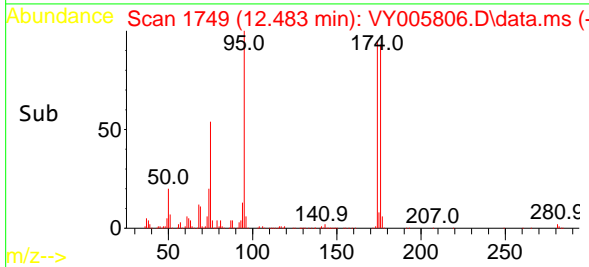
Tgt Ion:152 Resp: 115614
 Ion Ratio Lower Upper
 152 100
 115 54.4 27.3 81.9
 150 154.9 0.0 350.2

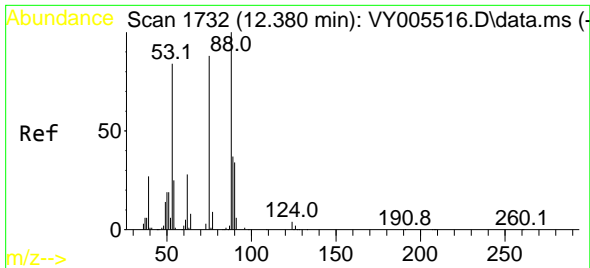


#76
 1,2,3-Trichloropropane
 Concen: 56.792 ug/l
 RT: 12.483 min Scan# 1749
 Delta R.T. -0.153 min
 Lab File: VY005806.D
 Acq: 20 Aug 2021 20:20



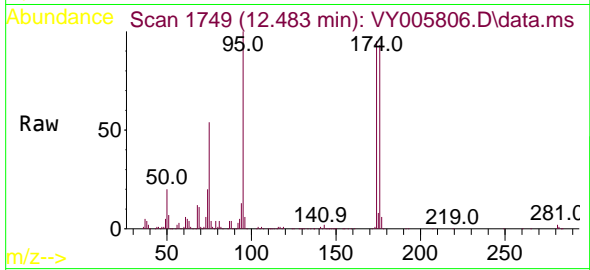
Tgt Ion: 75 Resp: 68042
 Ion Ratio Lower Upper
 75 100
 77 1.2 0.0 0.0#





#81
 trans-1,4-Dichloro-2-butene
 Concen: 114.485 ug/l
 RT: 12.483 min Scan# 1749
 Delta R.T. 0.104 min
 Lab File: VY005806.D
 Acq: 20 Aug 2021 20:20

Instrument :
 MSVOA_Y
 ClientSampled :



Tgt Ion: 75 Resp: 68042

Ion	Ratio	Lower	Upper
75	100		
53	0.1	76.7	115.1#
89	0.3	38.4	57.6#

