

Data Path : Z:\voasrv\HPCHEM1\MSVOA_Y\Data\VY082223\
 Data File : VY015267.D
 Acq On : 23 Aug 2023 00:39
 Operator : SY/MD
 Sample : 04110-07
 Misc : 4.67g/5.0mL/MSVOA_Y/SOIL
 ALS Vial : 39 Sample Multiplier: 1

Instrument :
 MSVOA_Y
 ClientSampleId :
 TP-07(1-3)

Quant Time: Aug 23 04:58:30 2023
 Quant Method : Z:\voasrv\HPCHEM1\MSVOA_Y\methods\82Y081423S.M
 Quant Title : SW846 8260
 QLast Update : Mon Aug 14 12:43:26 2023
 Response via : Initial Calibration

Compound	R.T.	QIon	Response	Conc	Units	Dev(Min)

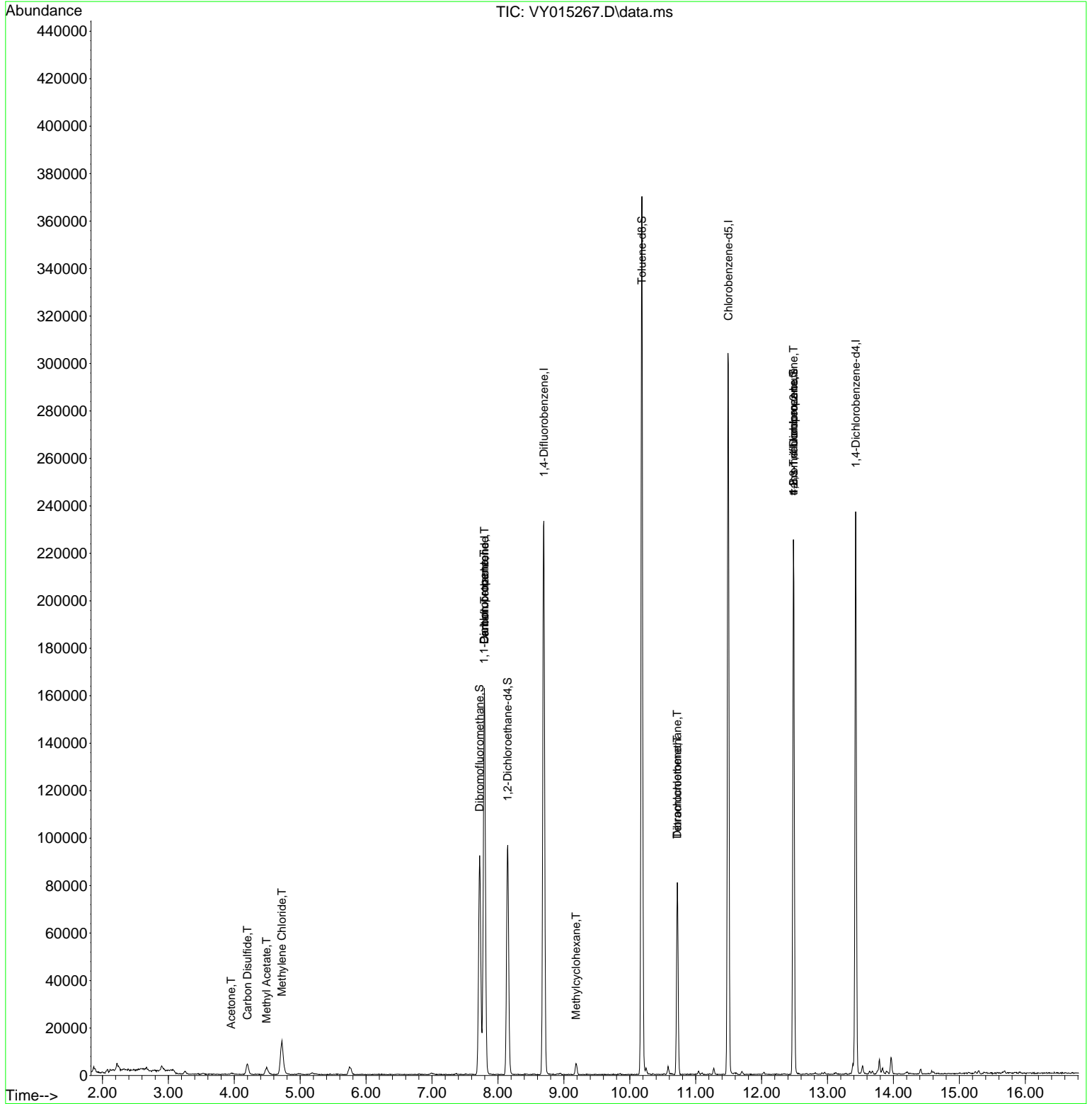
Internal Standards						
1) Pentafluorobenzene	7.795	168	123844	50.000	ug/l	0.01
34) 1,4-Difluorobenzene	8.697	114	205500	50.000	ug/l	0.01
63) Chlorobenzene-d5	11.496	117	165724	50.000	ug/l	0.00
72) 1,4-Dichlorobenzene-d4	13.428	152	59243	50.000	ug/l	0.00
System Monitoring Compounds						
33) 1,2-Dichloroethane-d4	8.149	65	77834	52.356	ug/l	0.01
Spiked Amount	50.000	Range	50 - 163	Recovery	=	104.720%
35) Dibromofluoromethane	7.722	113	65030	49.189	ug/l	0.00
Spiked Amount	50.000	Range	54 - 147	Recovery	=	98.380%
50) Toluene-d8	10.185	98	236158	47.986	ug/l	0.00
Spiked Amount	50.000	Range	58 - 134	Recovery	=	95.980%
62) 4-Bromofluorobenzene	12.483	95	62214	34.611	ug/l	0.00
Spiked Amount	50.000	Range	30 - 143	Recovery	=	69.220%
Target Compounds						
					Qvalue	
3) Chloromethane	2.113	50	258	Below Cal	#	43
5) Bromomethane	2.668	94	182	Below Cal		94
11) Tert butyl alcohol	4.972	59	394	Below Cal	#	89
16) Acetone	3.954	43	1083	2.230	ug/l	93
17) Carbon Disulfide	4.198	76	8916	5.879	ug/l	# 93
18) Methyl Acetate	4.491	43	5866	3.296	ug/l	95
20) Methylene Chloride	4.722	84	10129	4.792	ug/l	# 80
36) 1,1-Dichloropropene	7.789	75	9707	6.637	ug/l	# 49
38) Carbon Tetrachloride	7.795	117	12588	7.272	ug/l	# 17
39) Methylcyclohexane	9.185	83	1973	1.203	ug/l	92
60) Dibromochloromethane	10.721	129	12709	8.910	ug/l	# 11
64) Tetrachloroethene	10.721	164	16516	14.305	ug/l	98
76) 1,2,3-Trichloropropane	12.483	75	34317	47.679	ug/l	# 100
81) trans-1,4-Dichloro-2-b...	12.483	75	34317	104.725	ug/l	# 11

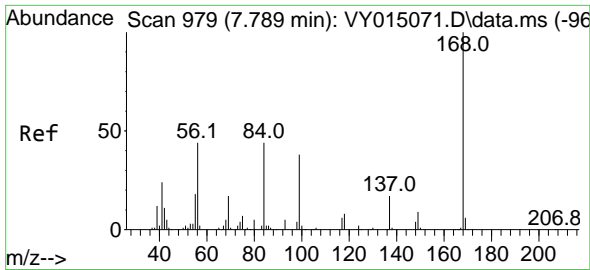
(#) = qualifier out of range (m) = manual integration (+) = signals summed

Data Path : Z:\voasrv\HPCHEM1\MSVOA_Y\Data\VY082223\
 Data File : VY015267.D
 Acq On : 23 Aug 2023 00:39
 Operator : SY/MD
 Sample : 04110-07
 Misc : 4.67g/5.0mL/MSVOA_Y/SOIL
 ALS Vial : 39 Sample Multiplier: 1

Instrument :
 MSVOA_Y
 ClientSampleId :
 TP-07(1-3)

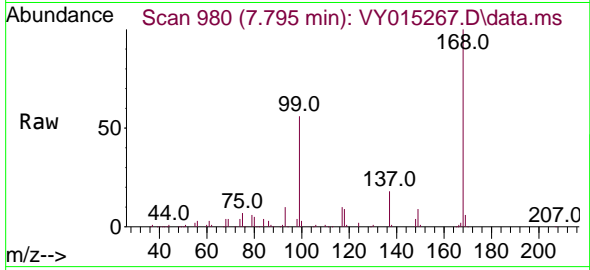
Quant Time: Aug 23 04:58:30 2023
 Quant Method : Z:\voasrv\HPCHEM1\MSVOA_Y\methods\82Y081423S.M
 Quant Title : SW846 8260
 QLast Update : Mon Aug 14 12:43:26 2023
 Response via : Initial Calibration



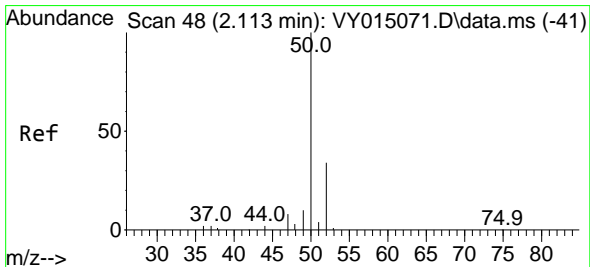
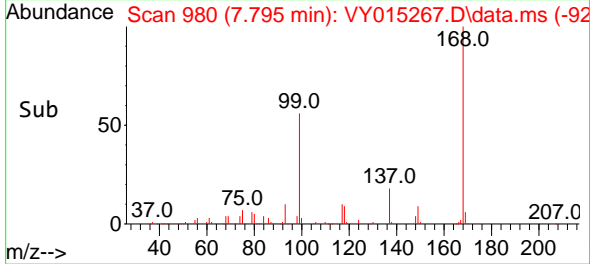
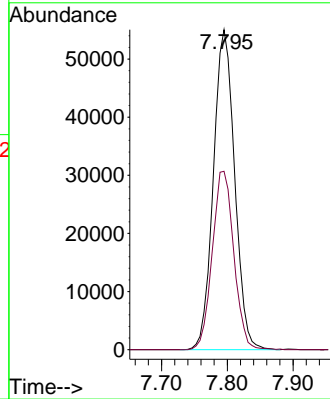


#1
 Pentafluorobenzene
 Concen: 50.000 ug/l
 RT: 7.795 min Scan# 91
 Delta R.T. 0.012 min
 Lab File: VY015267.D
 Acq: 23 Aug 2023 00:39

Instrument :
 MSVOA_Y
 ClientSampleId :
 TP-07(1-3)

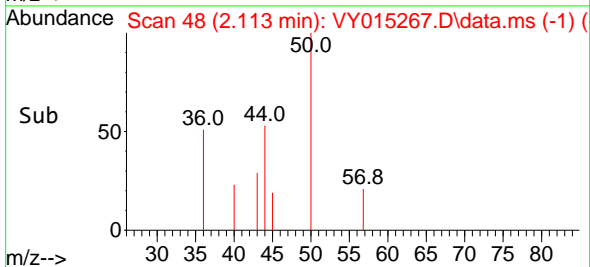
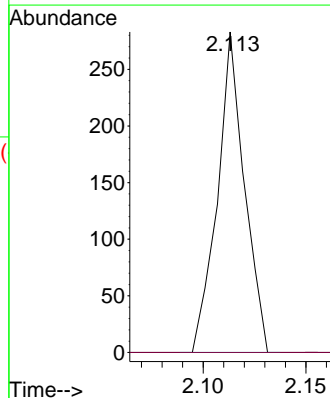
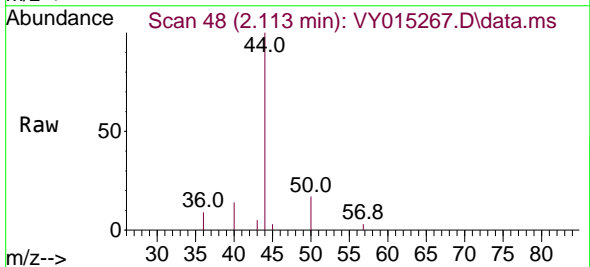


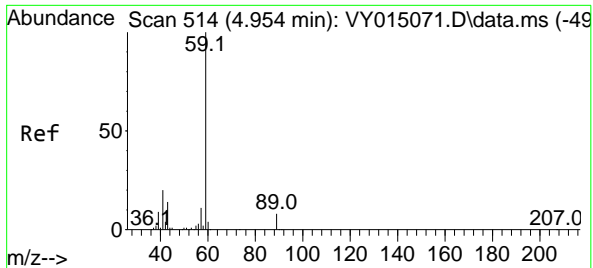
Tgt Ion:168 Resp: 123844
 Ion Ratio Lower Upper
 168 100
 99 55.8 43.4 65.0



#3
 Chloromethane
 Concen: Below Cal
 RT: 2.113 min Scan# 48
 Delta R.T. 0.006 min
 Lab File: VY015267.D
 Acq: 23 Aug 2023 00:39

Tgt Ion: 50 Resp: 258
 Ion Ratio Lower Upper
 50 100
 52 0.0 25.4 38.2#

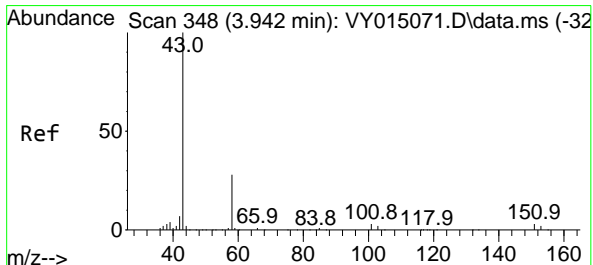
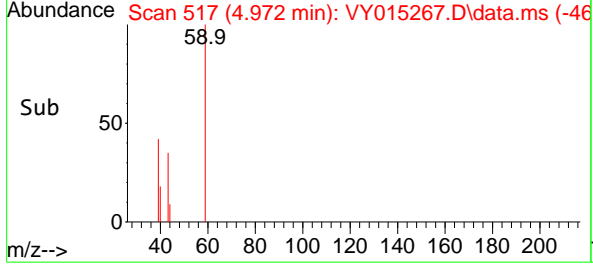
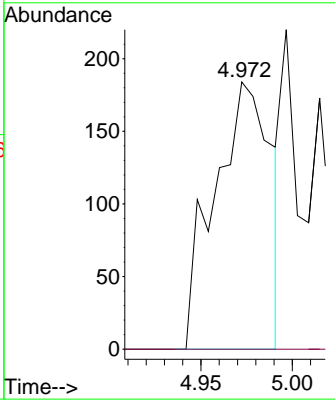
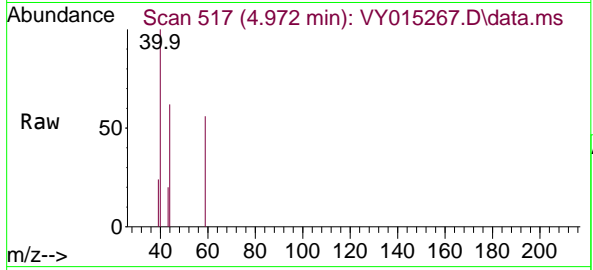




#11
 Tert butyl alcohol
 Concen: Below Cal
 RT: 4.972 min Scan# 51
 Delta R.T. 0.024 min
 Lab File: VY015267.D
 Acq: 23 Aug 2023 00:39

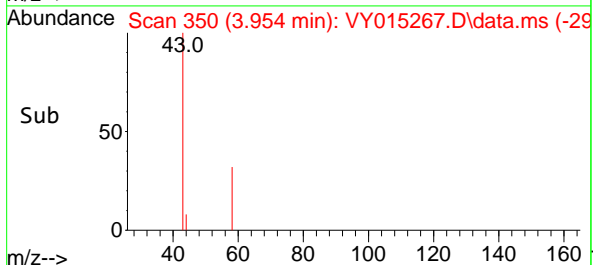
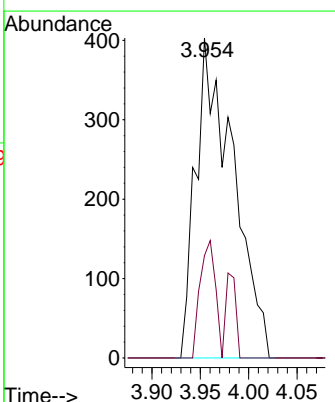
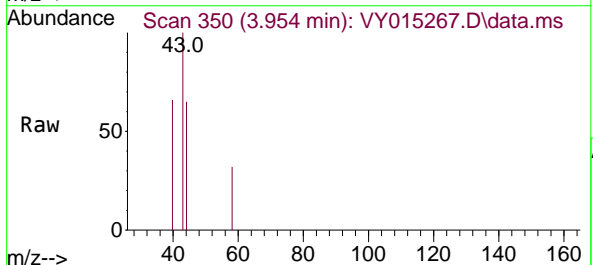
Instrument : MSVOA_Y
 ClientSampleId : TP-07(1-3)

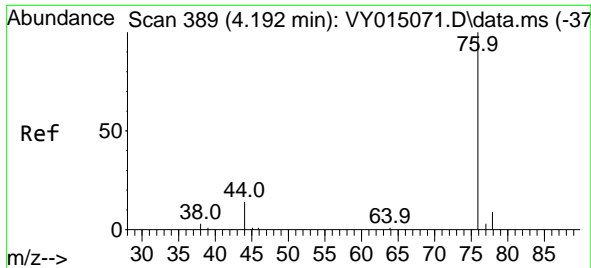
Tgt Ion: 59 Resp: 394
 Ion Ratio Lower Upper
 59 100
 57 0.0 3.0 4.4#



#16
 Acetone
 Concen: 2.230 ug/l
 RT: 3.954 min Scan# 350
 Delta R.T. 0.012 min
 Lab File: VY015267.D
 Acq: 23 Aug 2023 00:39

Tgt Ion: 43 Resp: 1083
 Ion Ratio Lower Upper
 43 100
 58 32.0 22.7 34.1

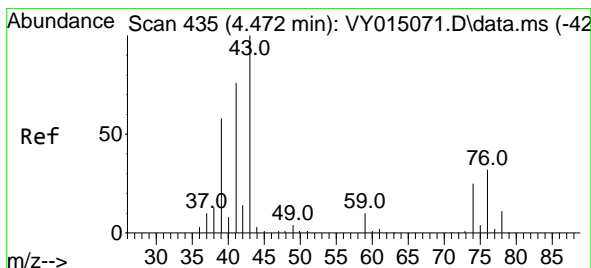
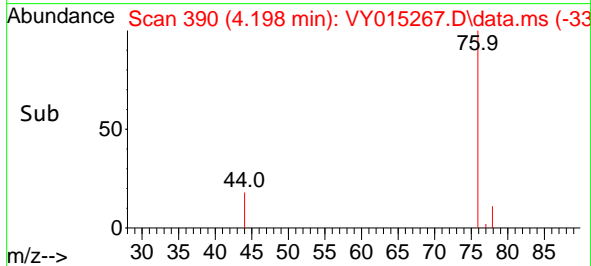
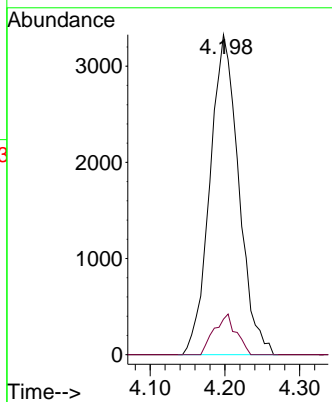
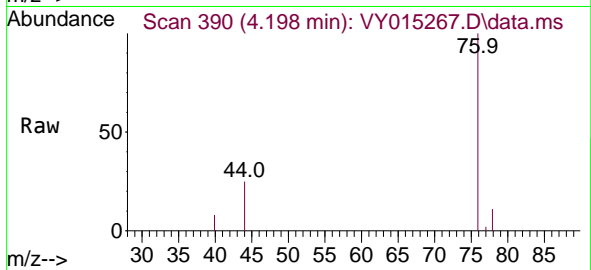




#17
 Carbon Disulfide
 Concen: 5.879 ug/l
 RT: 4.198 min Scan# 389
 Delta R.T. 0.012 min
 Lab File: VY015267.D
 Acq: 23 Aug 2023 00:39

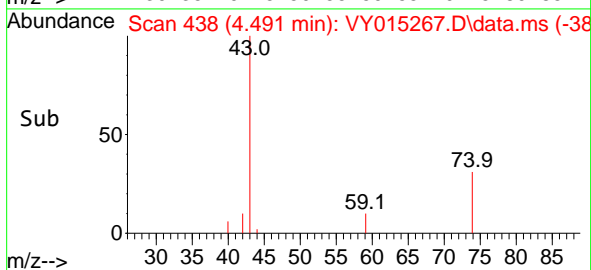
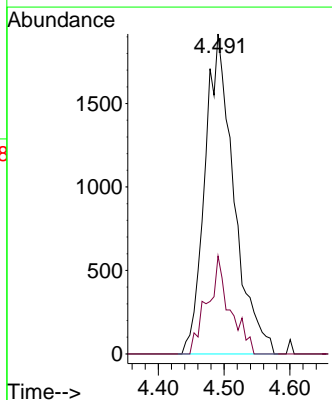
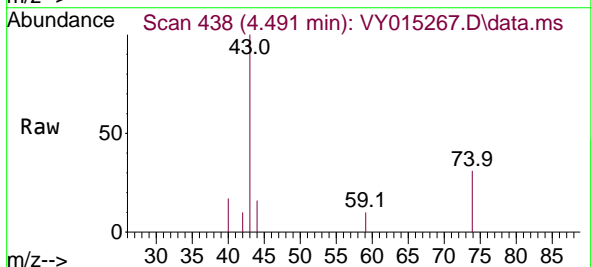
Instrument :
 MSVOA_Y
 ClientSampleId :
 TP-07(1-3)

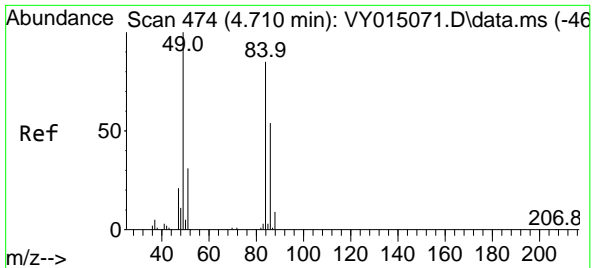
Tgt Ion: 76 Resp: 8916
 Ion Ratio Lower Upper
 76 100
 78 11.1 7.0 10.4#



#18
 Methyl Acetate
 Concen: 3.296 ug/l
 RT: 4.491 min Scan# 438
 Delta R.T. 0.025 min
 Lab File: VY015267.D
 Acq: 23 Aug 2023 00:39

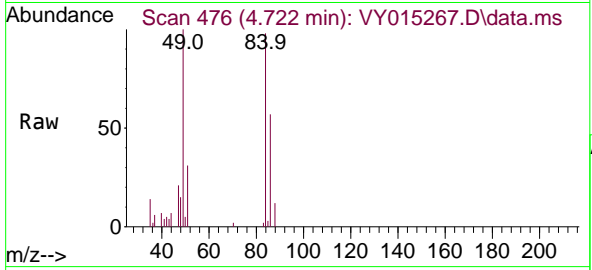
Tgt Ion: 43 Resp: 5866
 Ion Ratio Lower Upper
 43 100
 74 23.9 17.4 26.0





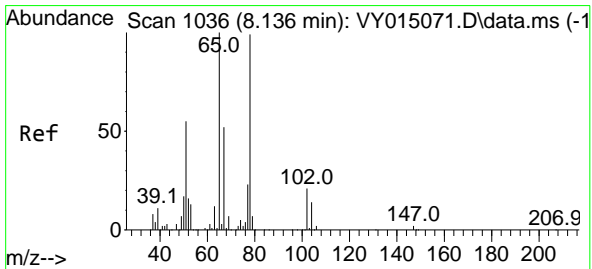
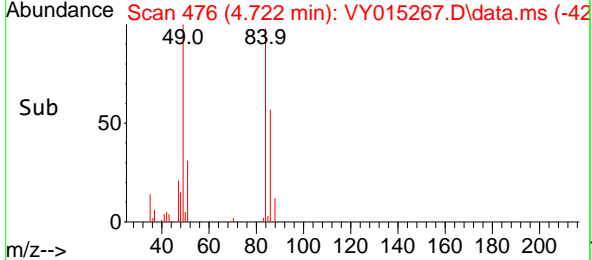
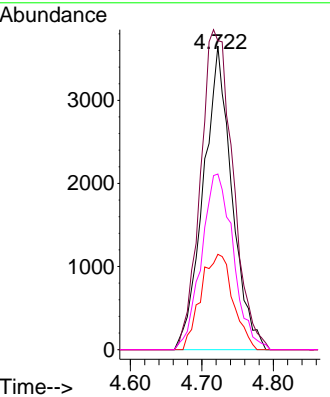
#20
 Methylene Chloride
 Concen: 4.792 ug/l
 RT: 4.722 min Scan# 41
 Delta R.T. 0.012 min
 Lab File: VY015267.D
 Acq: 23 Aug 2023 00:39

Instrument : MSVOA_Y
 ClientSampleId : TP-07(1-3)



Tgt Ion: 84 Resp: 10129

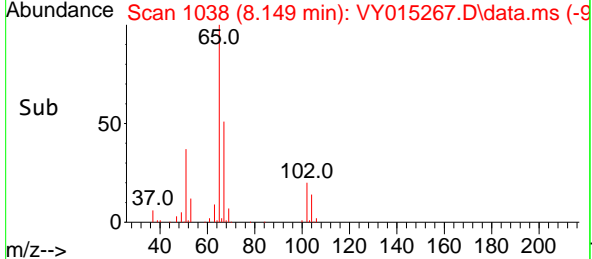
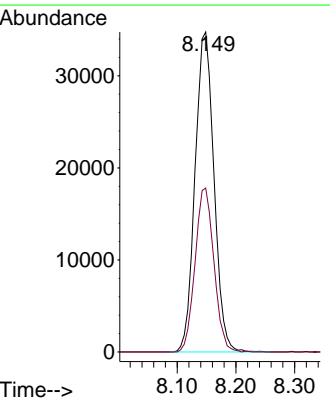
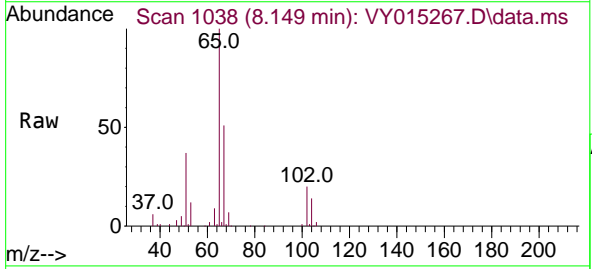
Ion	Ratio	Lower	Upper
84	100		
49	101.8	106.9	160.3#
51	31.4	33.2	49.8#
86	57.9	51.0	76.6

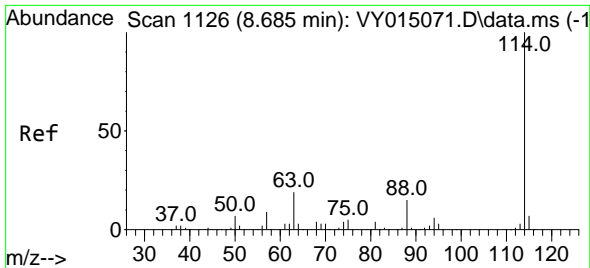


#33
 1,2-Dichloroethane-d4
 Concen: 52.356 ug/l
 RT: 8.149 min Scan# 1038
 Delta R.T. 0.012 min
 Lab File: VY015267.D
 Acq: 23 Aug 2023 00:39

Tgt Ion: 65 Resp: 77834

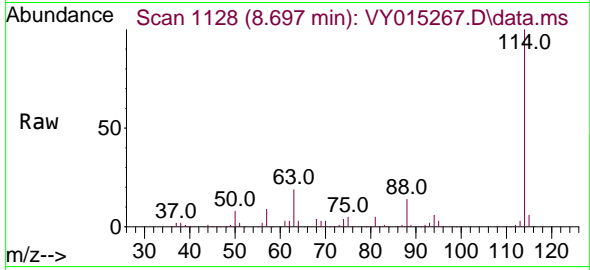
Ion	Ratio	Lower	Upper
65	100		
67	51.0	0.0	101.8



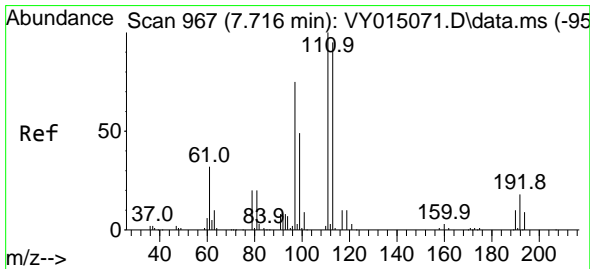
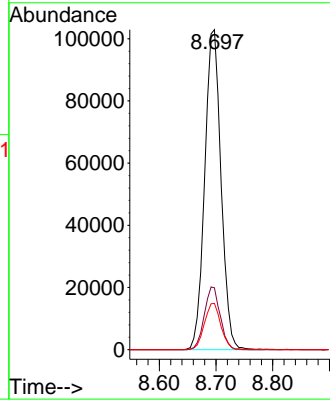
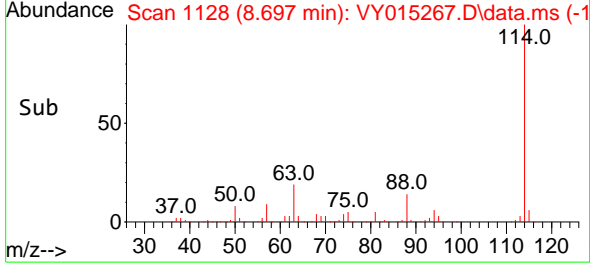


#34
 1,4-Difluorobenzene
 Concen: 50.000 ug/l
 RT: 8.697 min Scan# 1128
 Delta R.T. 0.012 min
 Lab File: VY015267.D
 Acq: 23 Aug 2023 00:39

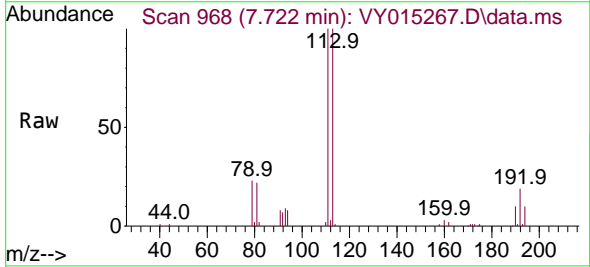
Instrument : MSVOA_Y
 ClientSampleId : TP-07(1-3)



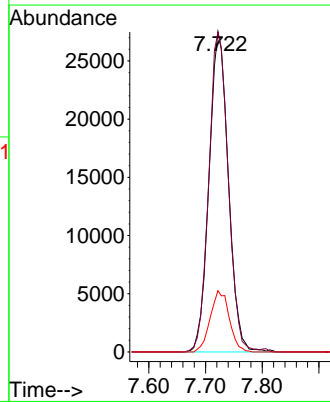
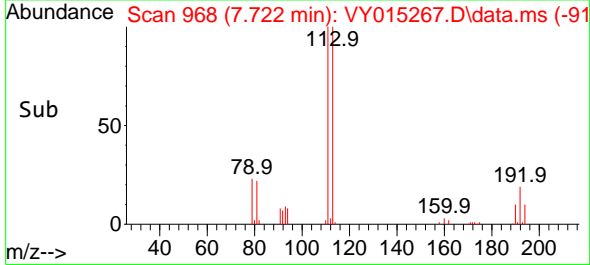
Tgt Ion:114 Resp: 205500
 Ion Ratio Lower Upper
 114 100
 63 19.4 0.0 42.4
 88 14.4 0.0 30.6

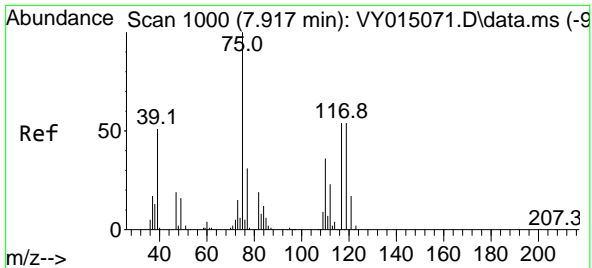


#35
 Dibromofluoromethane
 Concen: 49.189 ug/l
 RT: 7.722 min Scan# 968
 Delta R.T. 0.006 min
 Lab File: VY015267.D
 Acq: 23 Aug 2023 00:39



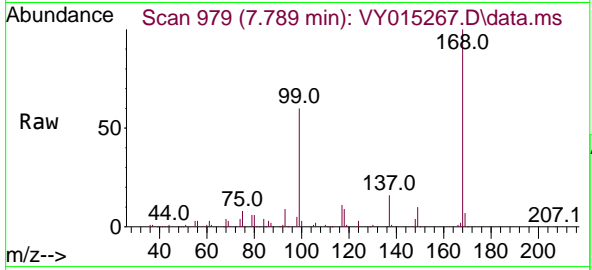
Tgt Ion:113 Resp: 65030
 Ion Ratio Lower Upper
 113 100
 111 100.4 81.3 121.9
 192 18.9 16.9 25.3



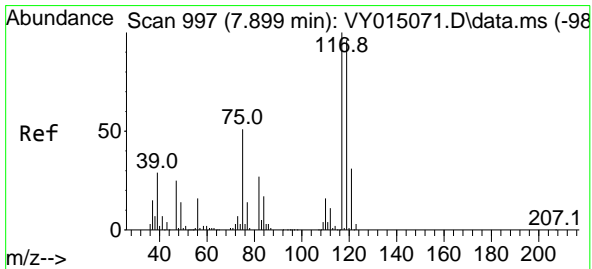
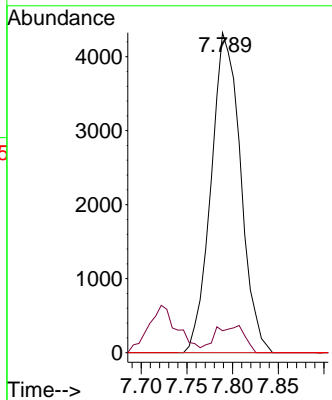
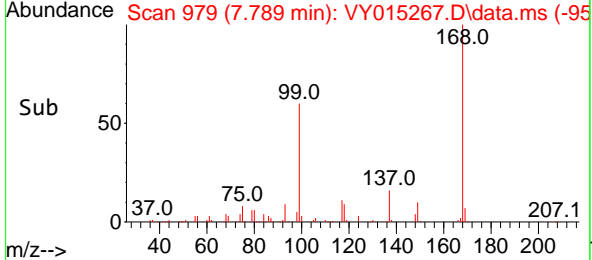


#36
 1,1-Dichloropropene
 Concen: 6.637 ug/l
 RT: 7.789 min Scan# 91
 Delta R.T. -0.122 min
 Lab File: VY015267.D
 Acq: 23 Aug 2023 00:39

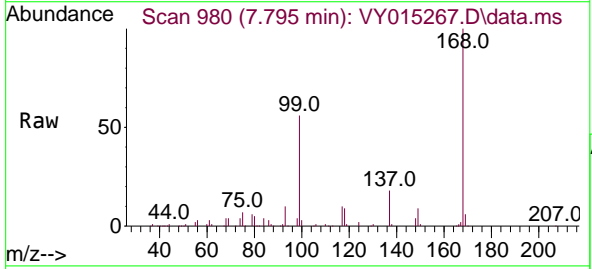
Instrument : MSVOA_Y
 ClientSampleId : TP-07(1-3)



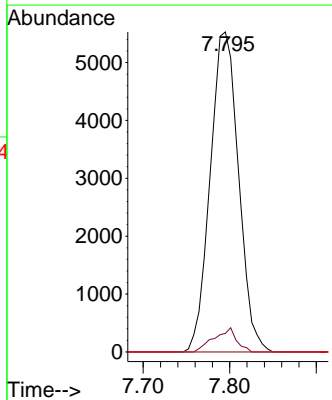
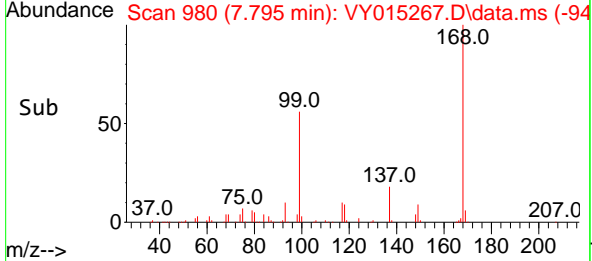
Tgt Ion: 75 Resp: 9707
 Ion Ratio Lower Upper
 75 100
 110 8.4 17.8 53.5#
 77 0.0 24.4 36.6#

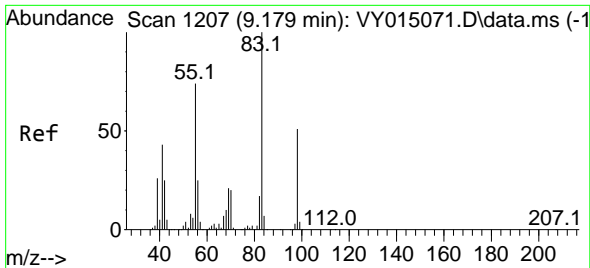


#38
 Carbon Tetrachloride
 Concen: 7.272 ug/l
 RT: 7.795 min Scan# 980
 Delta R.T. -0.104 min
 Lab File: VY015267.D
 Acq: 23 Aug 2023 00:39



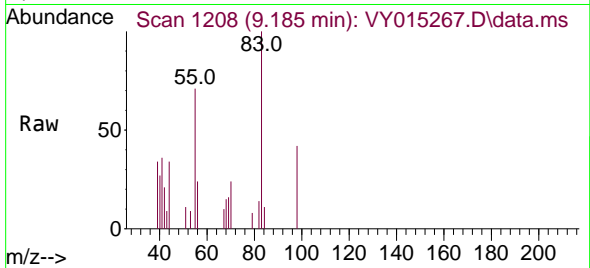
Tgt Ion: 117 Resp: 12588
 Ion Ratio Lower Upper
 117 100
 119 5.8 76.4 114.6#
 121 0.0 25.8 38.6#



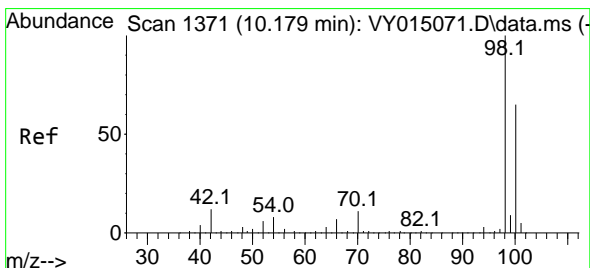
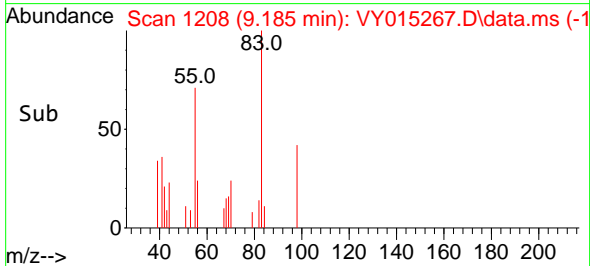
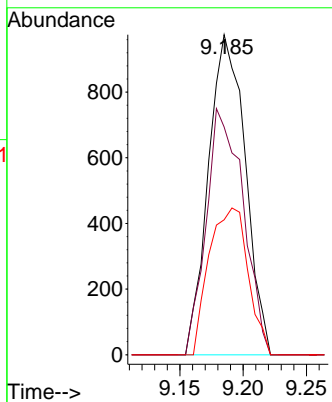


#39
 Methylcyclohexane
 Concen: 1.203 ug/l
 RT: 9.185 min Scan# 11
 Delta R.T. 0.006 min
 Lab File: VY015267.D
 Acq: 23 Aug 2023 00:39

Instrument :
 MSVOA_Y
 ClientSampleId :
 TP-07(1-3)

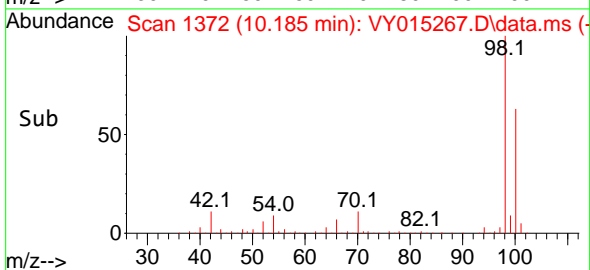
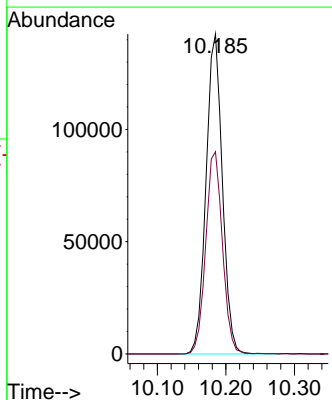
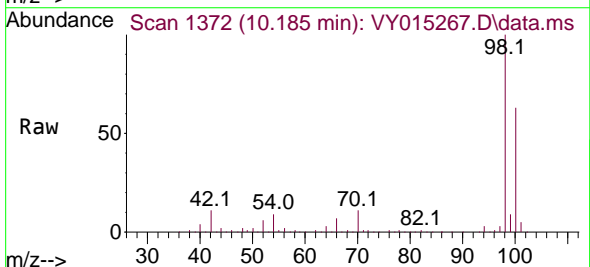


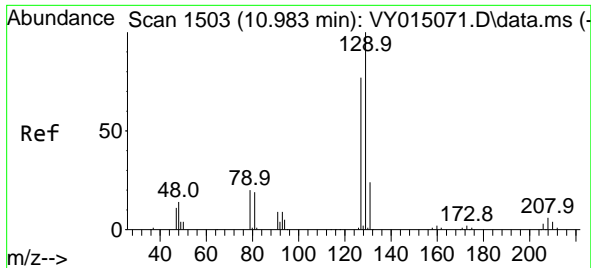
Tgt Ion: 83 Resp: 1973
 Ion Ratio Lower Upper
 83 100
 55 71.2 63.0 94.4
 98 42.2 37.4 56.2



#50
 Toluene-d8
 Concen: 47.986 ug/l
 RT: 10.185 min Scan# 1372
 Delta R.T. 0.006 min
 Lab File: VY015267.D
 Acq: 23 Aug 2023 00:39

Tgt Ion: 98 Resp: 236158
 Ion Ratio Lower Upper
 98 100
 100 64.7 50.1 75.1

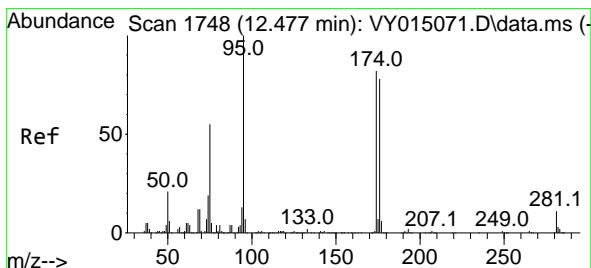
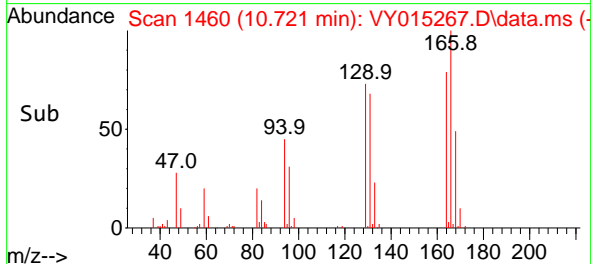
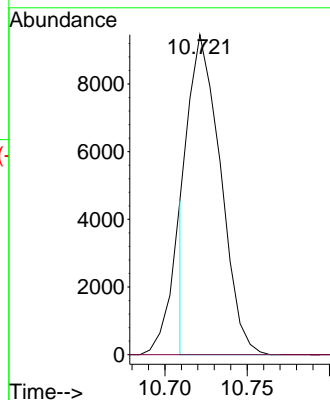
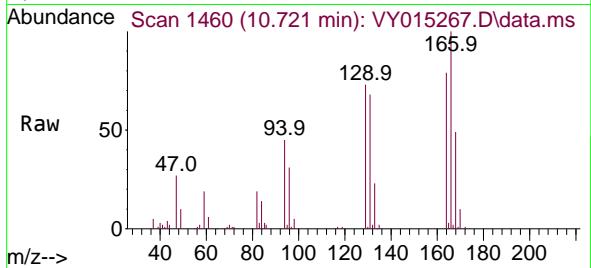




#60
 Dibromochloromethane
 Concen: 8.910 ug/l
 RT: 10.721 min Scan# 14
 Delta R.T. -0.262 min
 Lab File: VY015267.D
 Acq: 23 Aug 2023 00:39

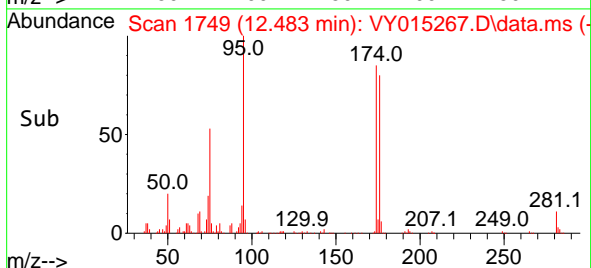
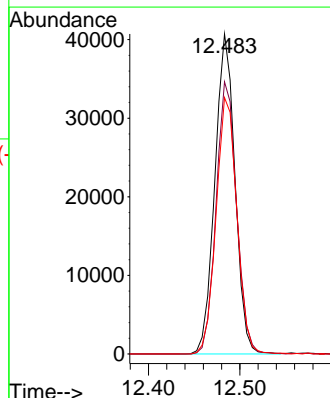
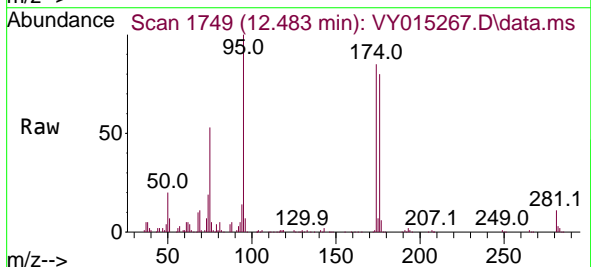
Instrument :
 MSVOA_Y
 ClientSampleId :
 TP-07(1-3)

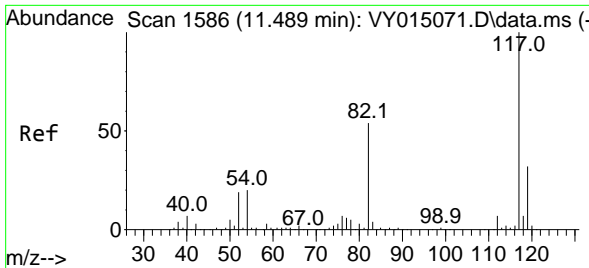
Tgt Ion:129 Resp: 12709
 Ion Ratio Lower Upper
 129 100
 127 0.0 38.5 115.5#



#62
 4-Bromofluorobenzene
 Concen: 34.611 ug/l
 RT: 12.483 min Scan# 1749
 Delta R.T. 0.006 min
 Lab File: VY015267.D
 Acq: 23 Aug 2023 00:39

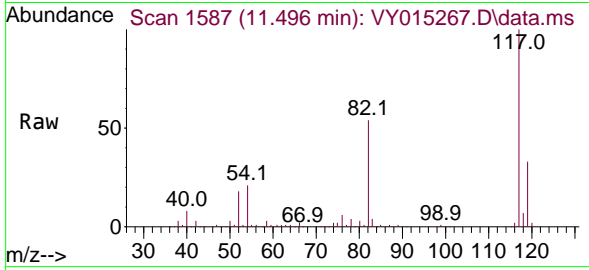
Tgt Ion: 95 Resp: 62214
 Ion Ratio Lower Upper
 95 100
 174 86.3 0.0 178.2
 176 82.9 0.0 173.8





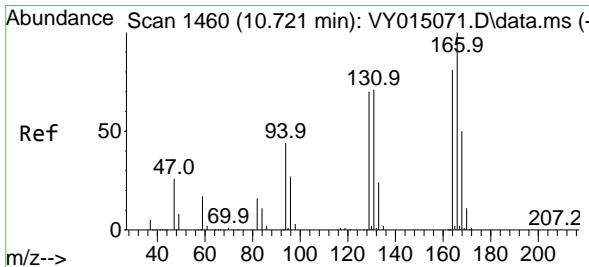
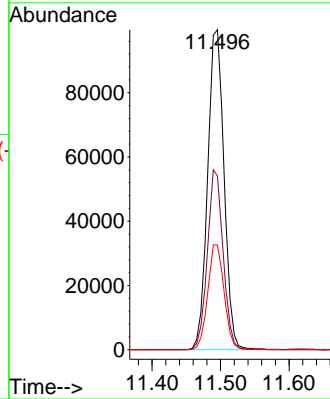
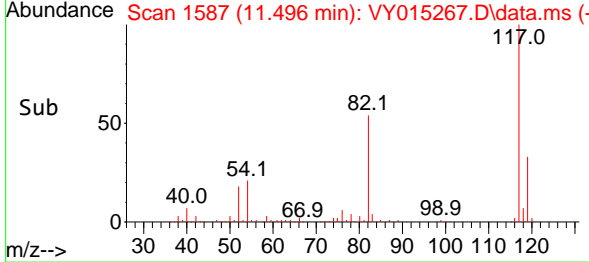
#63
 Chlorobenzene-d5
 Concen: 50.000 ug/l
 RT: 11.496 min Scan# 111
 Delta R.T. 0.006 min
 Lab File: VY015267.D
 Acq: 23 Aug 2023 00:39

Instrument : MSVOA_Y
 ClientSampleId : TP-07(1-3)

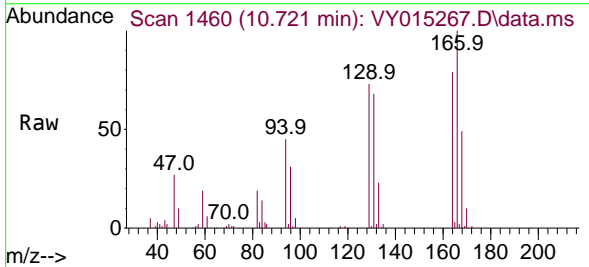


Tgt Ion:117 Resp: 165724

Ion	Ratio	Lower	Upper
117	100		
82	54.3	43.4	65.0
119	32.7	26.3	39.5

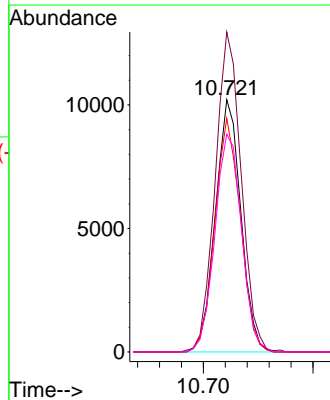
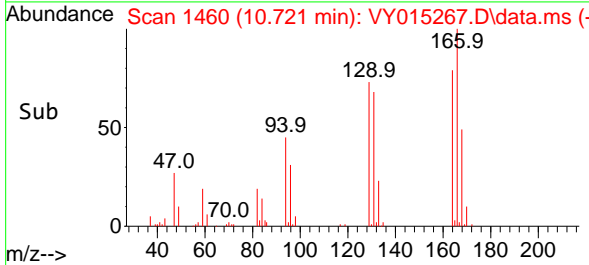


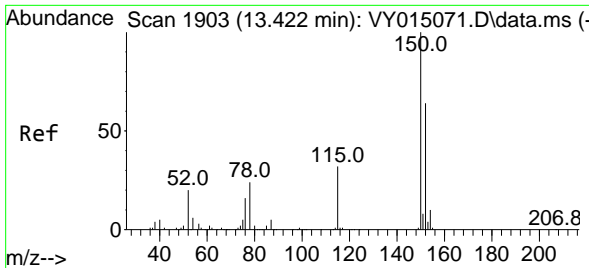
#64
 Tetrachloroethene
 Concen: 14.305 ug/l
 RT: 10.721 min Scan# 1460
 Delta R.T. 0.006 min
 Lab File: VY015267.D
 Acq: 23 Aug 2023 00:39



Tgt Ion:164 Resp: 16516

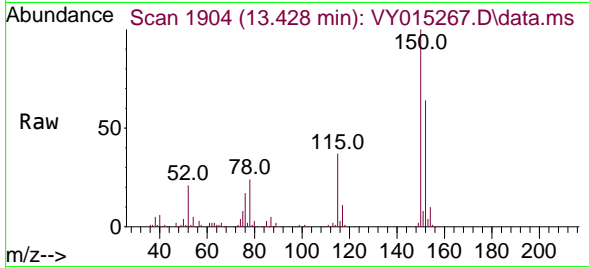
Ion	Ratio	Lower	Upper
164	100		
166	126.8	103.0	154.6
129	92.6	77.2	115.8
131	86.3	69.6	104.4



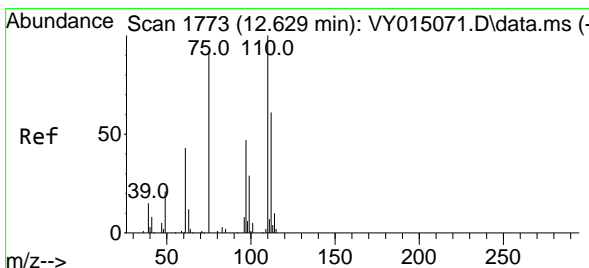
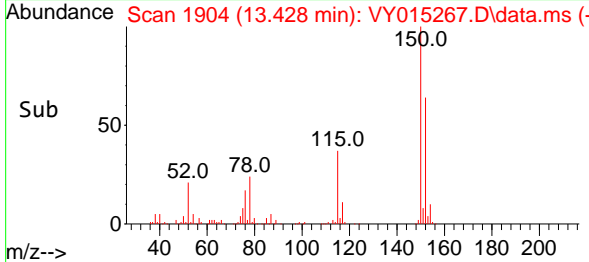
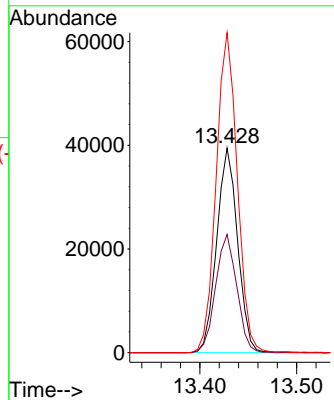


#72
 1,4-Dichlorobenzene-d4
 Concen: 50.000 ug/l
 RT: 13.428 min Scan# 1749
 Delta R.T. 0.006 min
 Lab File: VY015267.D
 Acq: 23 Aug 2023 00:39

Instrument : MSVOA_Y
 ClientSampleId : TP-07(1-3)

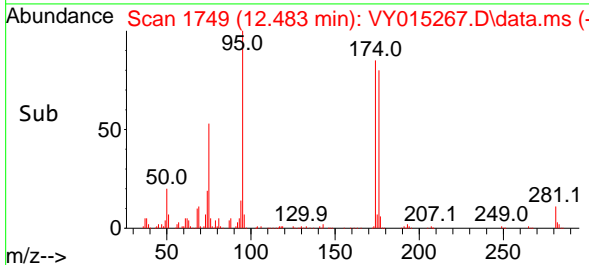
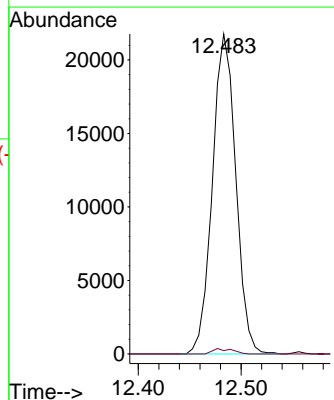
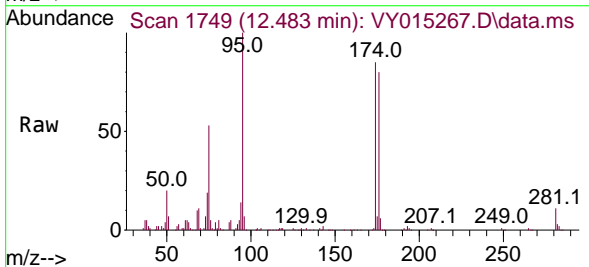


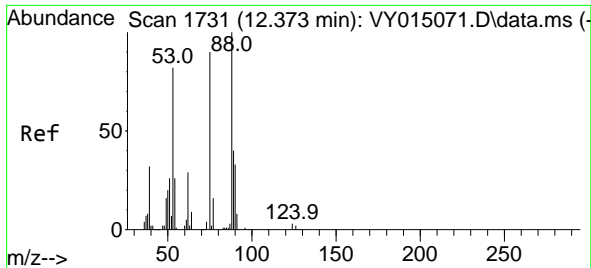
Tgt Ion:152 Resp: 59243
 Ion Ratio Lower Upper
 152 100
 115 58.5 28.8 86.5
 150 158.0 0.0 348.8



#76
 1,2,3-Trichloropropane
 Concen: 47.679 ug/l
 RT: 12.483 min Scan# 1749
 Delta R.T. -0.146 min
 Lab File: VY015267.D
 Acq: 23 Aug 2023 00:39

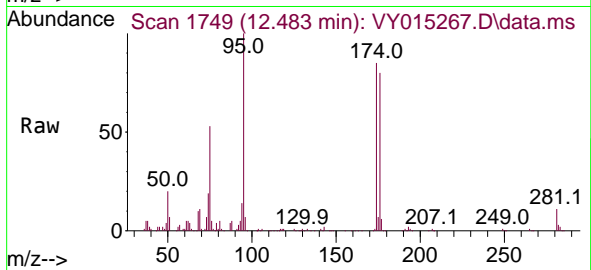
Tgt Ion: 75 Resp: 34317
 Ion Ratio Lower Upper
 75 100
 77 1.4 0.0 0.0#





#81
 trans-1,4-Dichloro-2-butene
 Concen: 104.725 ug/l
 RT: 12.483 min Scan# 11
 Delta R.T. 0.110 min
 Lab File: VY015267.D
 Acq: 23 Aug 2023 00:39

Instrument :
 MSVOA_Y
 ClientSampleId :
 TP-07(1-3)



Tgt Ion: 75 Resp: 34317
 Ion Ratio Lower Upper
 75 100
 53 0.0 77.8 116.8#
 89 0.1 37.4 56.0#

