

Data Path : Z:\voasrv\HPCHEM1\MSVOA\_Y\Data\VY082224\  
 Data File : VY019226.D  
 Acq On : 22 Aug 2024 17:33  
 Operator : SY/MD  
 Sample : P3671-07  
 Misc : 7.03g/5.0mL/MSVOA\_Y/SOIL/B  
 ALS Vial : 18 Sample Multiplier: 1

Instrument :  
 MSVOA\_Y  
 ClientSampleId :  
 S-905-J-SO-0-0.5-081924-FD

Quant Time: Aug 23 01:55:36 2024  
 Quant Method : Z:\voasrv\HPCHEM1\MSVOA\_Y\methods\82Y081524S.M  
 Quant Title : SW846 8260  
 QLast Update : Fri Aug 16 05:10:30 2024  
 Response via : Initial Calibration

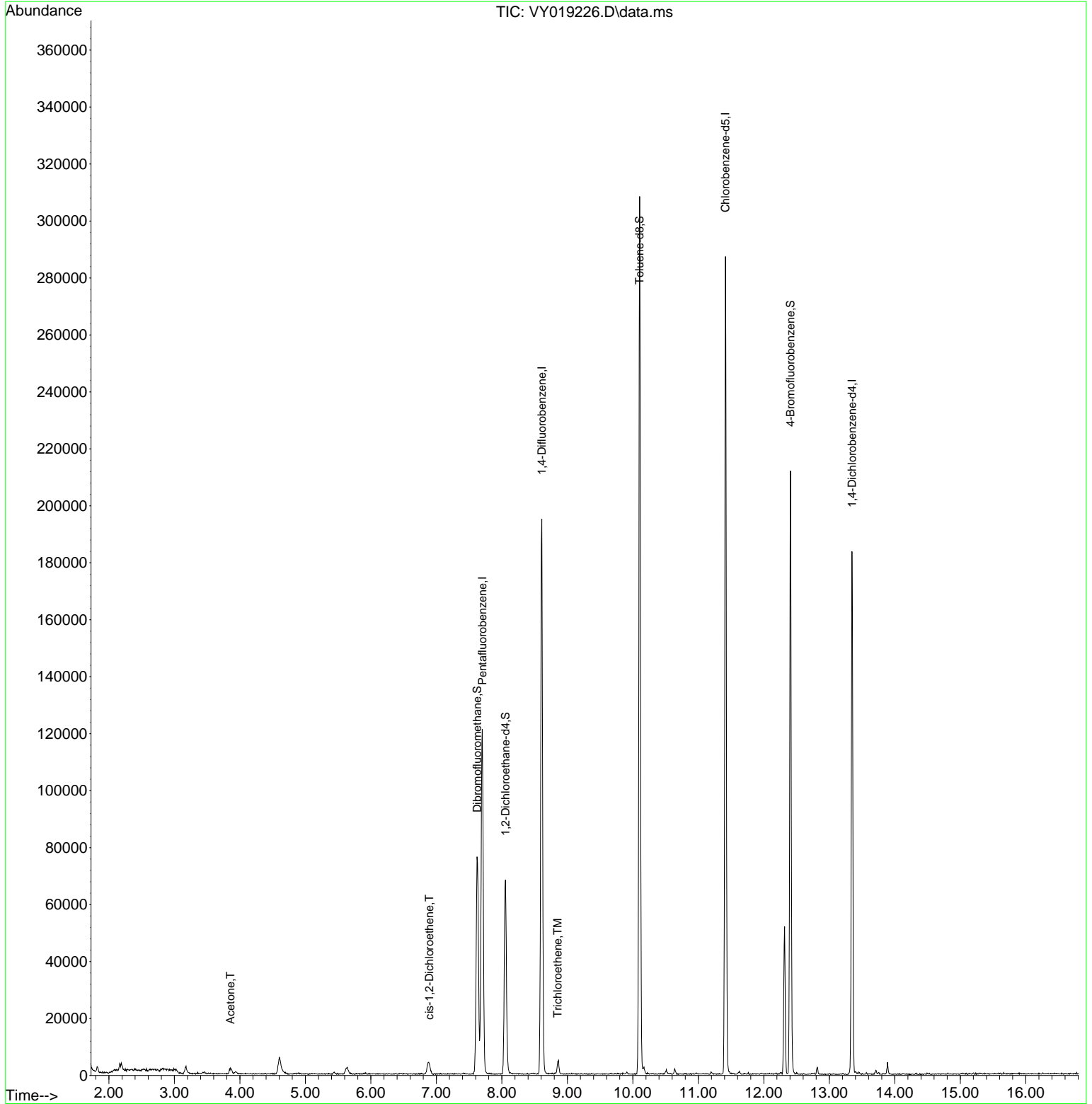
Compound	R.T.	QIon	Response	Conc	Units	Dev(Min)
-----						
Internal Standards						
1) Pentafluorobenzene	7.701	168	93888	50.000	ug/l	0.00
34) 1,4-Difluorobenzene	8.610	114	167175	50.000	ug/l	0.00
63) Chlorobenzene-d5	11.414	117	153261	50.000	ug/l	0.00
72) 1,4-Dichlorobenzene-d4	13.347	152	46673	50.000	ug/l	0.00
System Monitoring Compounds						
33) 1,2-Dichloroethane-d4	8.055	65	54627	58.043	ug/l	0.00
Spiked Amount	50.000	Range	50 - 163	Recovery	=	116.080%
35) Dibromofluoromethane	7.622	113	54916	50.239	ug/l	0.00
Spiked Amount	50.000	Range	54 - 147	Recovery	=	100.480%
50) Toluene-d8	10.103	98	189372	48.142	ug/l	0.00
Spiked Amount	50.000	Range	58 - 134	Recovery	=	96.280%
62) 4-Bromofluorobenzene	12.408	95	63020	46.996	ug/l	0.00
Spiked Amount	50.000	Range	29 - 146	Recovery	=	94.000%
Target Compounds						
					Qvalue	
16) Acetone	3.854	43	3865	22.144	ug/l #	78
27) cis-1,2-Dichloroethene	6.890	96	2790	2.266	ug/l	92
44) Trichloroethene	8.853	130	1544	1.202	ug/l	88
-----						

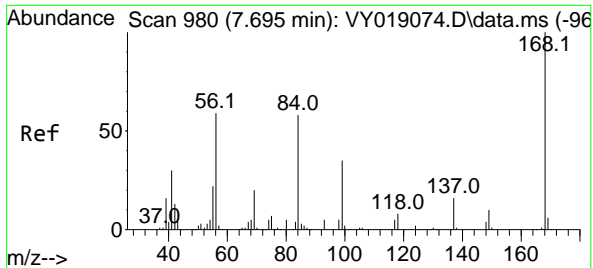
(#) = qualifier out of range (m) = manual integration (+) = signals summed

Data Path : Z:\voasrv\HPCHEM1\MSVOA\_Y\Data\VY082224\  
 Data File : VY019226.D  
 Acq On : 22 Aug 2024 17:33  
 Operator : SY/MD  
 Sample : P3671-07  
 Misc : 7.03g/5.0mL/MSVOA\_Y/SOIL/B  
 ALS Vial : 18 Sample Multiplier: 1

**Instrument :**  
 MSVOA\_Y  
**ClientSampleId :**  
 S-905-J-SO-0-0.5-081924-FD

Quant Time: Aug 23 01:55:36 2024  
 Quant Method : Z:\voasrv\HPCHEM1\MSVOA\_Y\methods\82Y081524S.M  
 Quant Title : SW846 8260  
 QLast Update : Fri Aug 16 05:10:30 2024  
 Response via : Initial Calibration

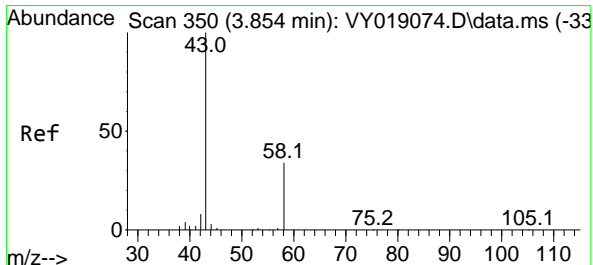
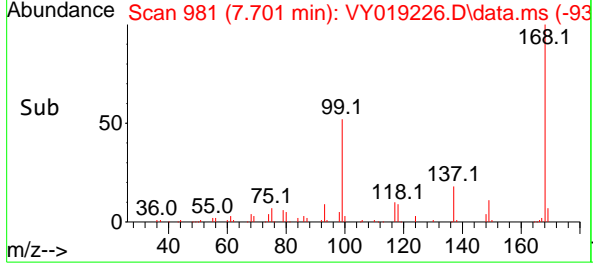
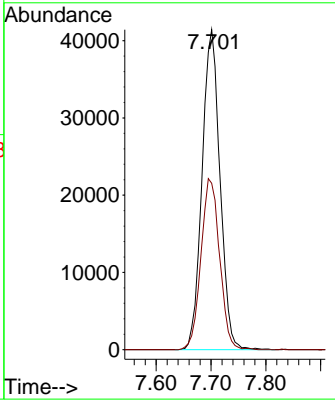
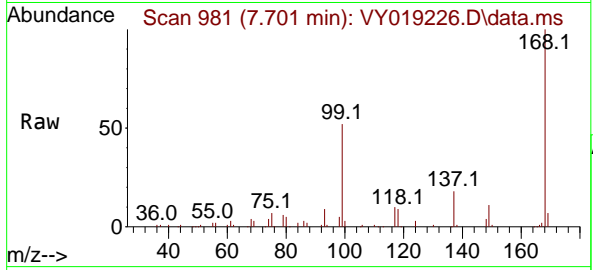




#1  
 Pentafluorobenzene  
 Concen: 50.000 ug/l  
 RT: 7.701 min Scan# 91  
 Delta R.T. 0.006 min  
 Lab File: VY019226.D  
 Acq: 22 Aug 2024 17:33

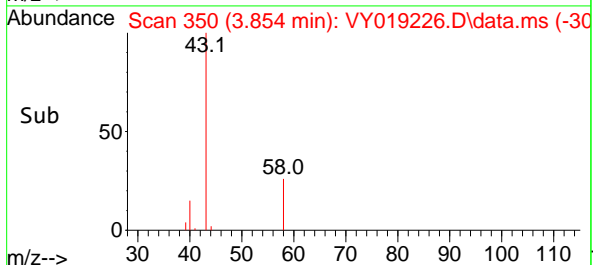
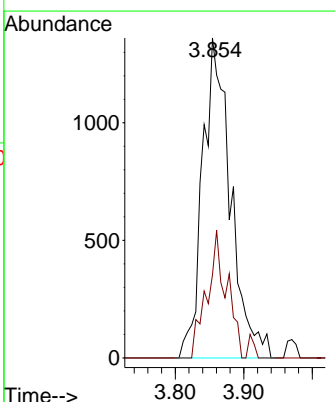
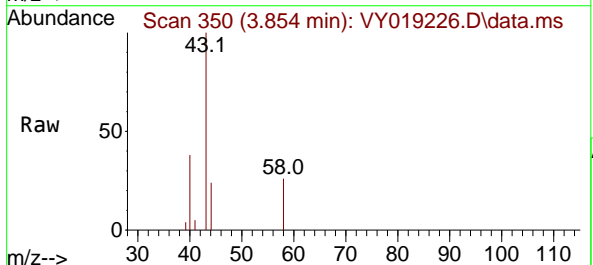
Instrument : MSVOA\_Y  
 ClientSampleId : S-905-J-SO-0-0.5-081924-FD

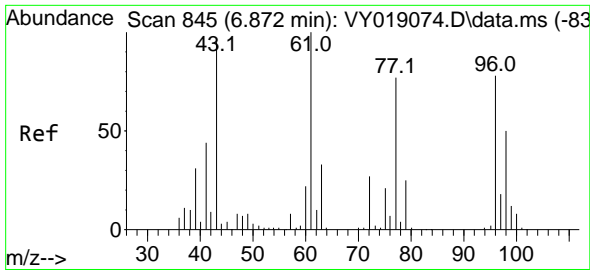
Tgt Ion:168 Resp: 93888  
 Ion Ratio Lower Upper  
 168 100  
 99 52.0 39.1 58.7



#16  
 Acetone  
 Concen: 22.144 ug/l  
 RT: 3.854 min Scan# 350  
 Delta R.T. 0.000 min  
 Lab File: VY019226.D  
 Acq: 22 Aug 2024 17:33

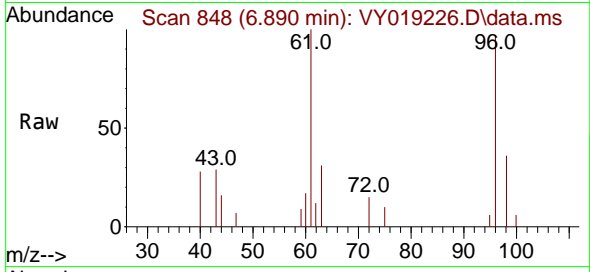
Tgt Ion: 43 Resp: 3865  
 Ion Ratio Lower Upper  
 43 100  
 58 26.0 31.7 47.5#



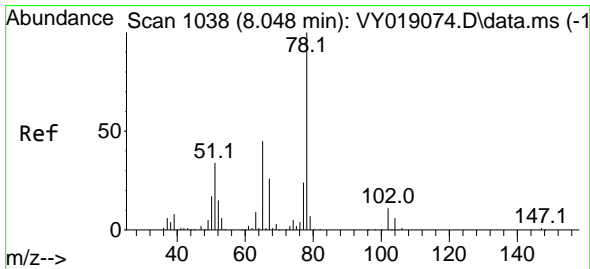
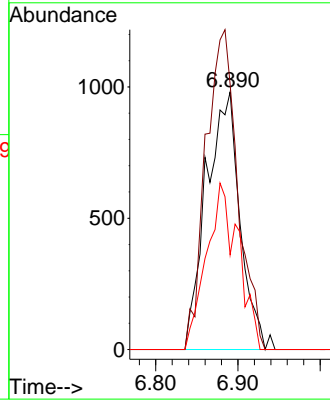
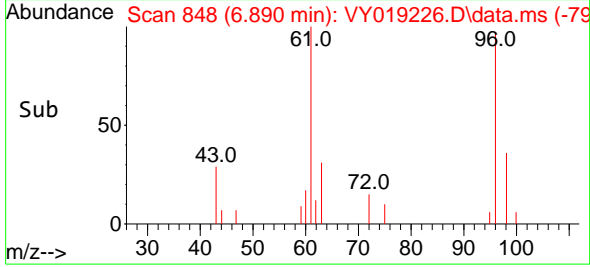


#27  
 cis-1,2-Dichloroethene  
 Concen: 2.266 ug/l  
 RT: 6.890 min Scan# 845  
 Delta R.T. 0.019 min  
 Lab File: VY019226.D  
 Acq: 22 Aug 2024 17:33

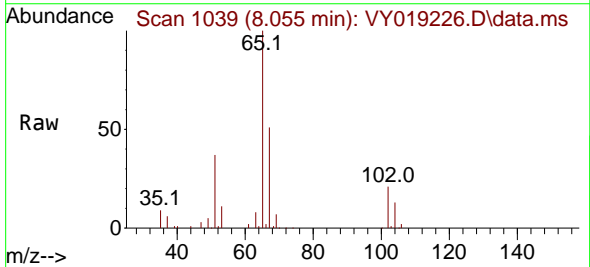
Instrument : MSVOA\_Y  
 ClientSampleId : S-905-J-SO-0-0.5-081924-FD



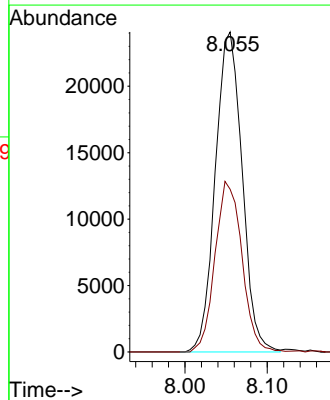
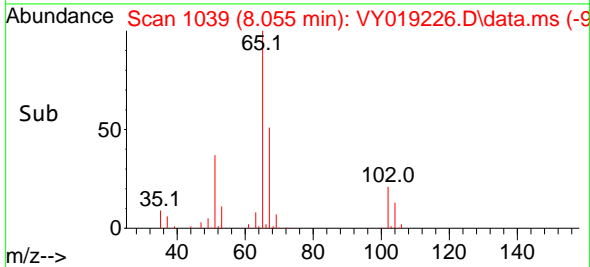
Tgt Ion: 96 Resp: 2790  
 Ion Ratio Lower Upper  
 96 100  
 61 117.6 0.0 256.2  
 98 61.2 0.0 130.0

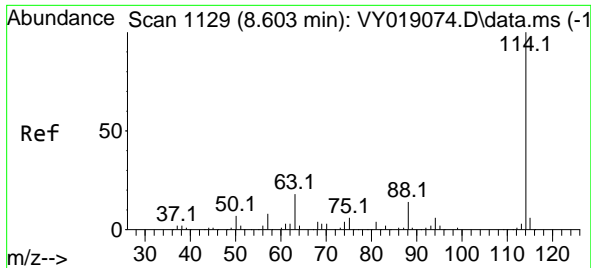


#33  
 1,2-Dichloroethane-d4  
 Concen: 58.043 ug/l  
 RT: 8.055 min Scan# 1039  
 Delta R.T. 0.006 min  
 Lab File: VY019226.D  
 Acq: 22 Aug 2024 17:33



Tgt Ion: 65 Resp: 54627  
 Ion Ratio Lower Upper  
 65 100  
 67 53.4 0.0 109.6



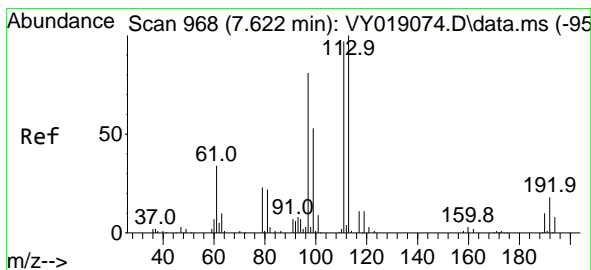
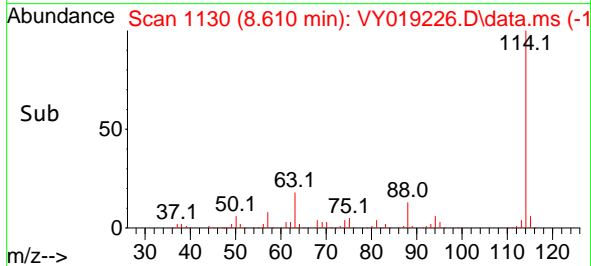
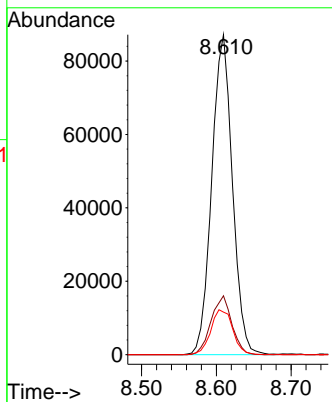
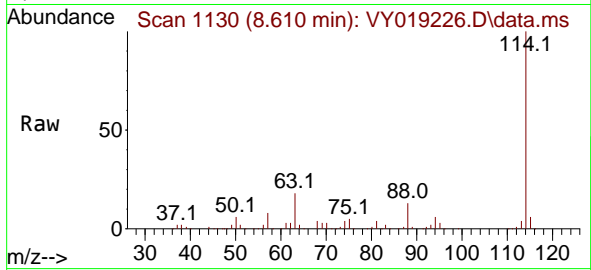


#34  
 1,4-Difluorobenzene  
 Concen: 50.000 ug/l  
 RT: 8.610 min Scan# 1129  
 Delta R.T. 0.006 min  
 Lab File: VY019226.D  
 Acq: 22 Aug 2024 17:33

Instrument : MSVOA\_Y  
 ClientSampleId : S-905-J-SO-0-0.5-081924-FD

Tgt Ion:114 Resp: 167175

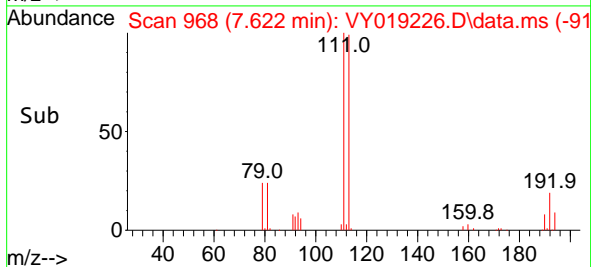
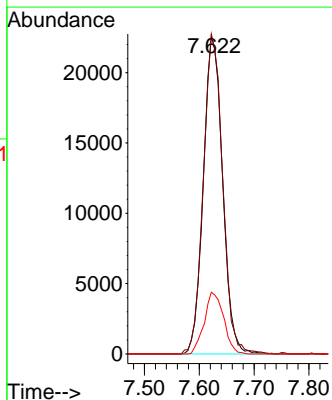
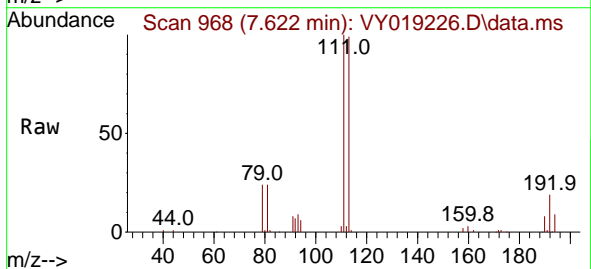
Ion	Ratio	Lower	Upper
114	100		
63	18.4	0.0	35.0
88	13.3	0.0	27.2

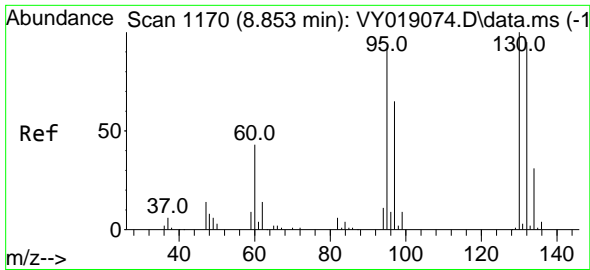


#35  
 Dibromofluoromethane  
 Concen: 50.239 ug/l  
 RT: 7.622 min Scan# 968  
 Delta R.T. 0.000 min  
 Lab File: VY019226.D  
 Acq: 22 Aug 2024 17:33

Tgt Ion:113 Resp: 54916

Ion	Ratio	Lower	Upper
113	100		
111	101.2	82.2	123.4
192	19.6	15.9	23.9

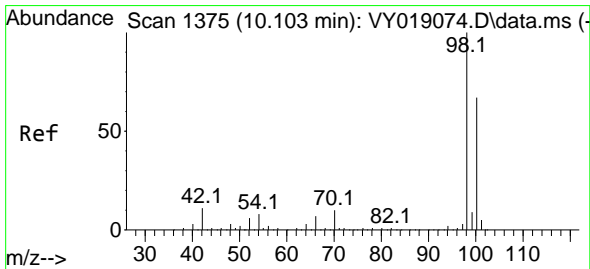
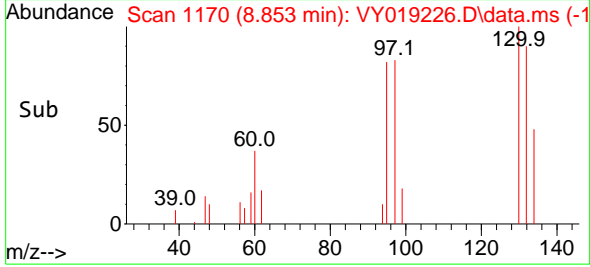
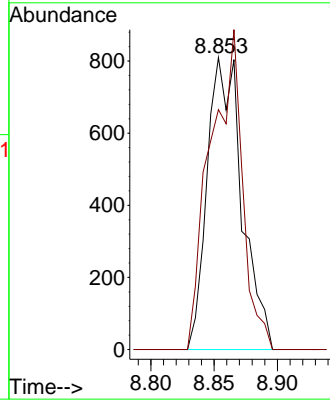
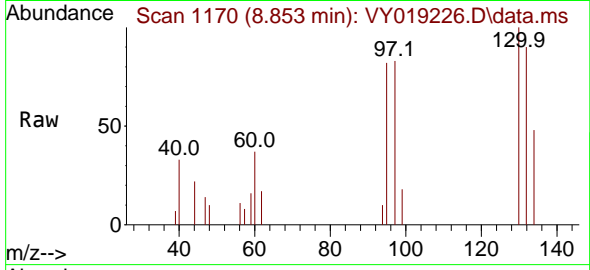




#44  
 Trichloroethene  
 Concen: 1.202 ug/l  
 RT: 8.853 min Scan# 1170  
 Delta R.T. 0.000 min  
 Lab File: VY019226.D  
 Acq: 22 Aug 2024 17:33

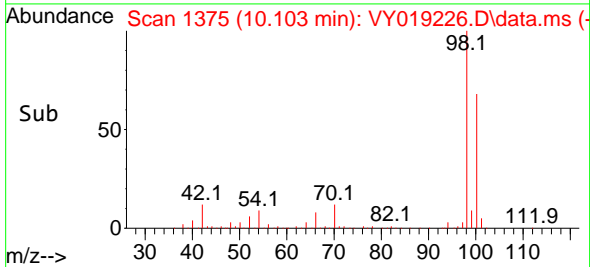
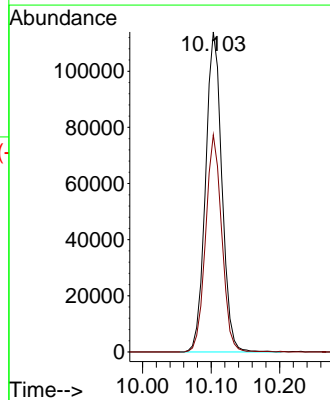
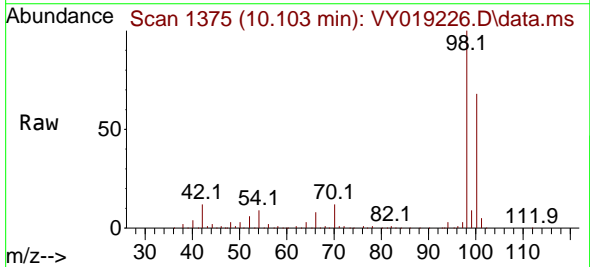
Instrument : MSVOA\_Y  
 ClientSampleId : S-905-J-SO-0-0.5-081924-FD

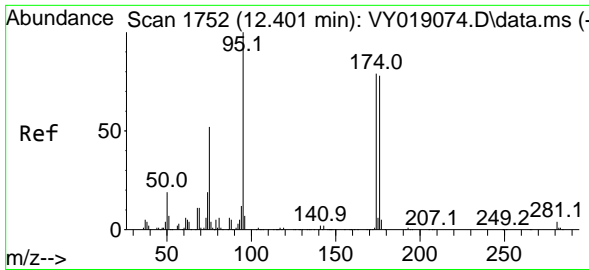
Tgt Ion:130 Resp: 1544  
 Ion Ratio Lower Upper  
 130 100  
 95 82.1 0.0 188.0



#50  
 Toluene-d8  
 Concen: 48.142 ug/l  
 RT: 10.103 min Scan# 1375  
 Delta R.T. 0.000 min  
 Lab File: VY019226.D  
 Acq: 22 Aug 2024 17:33

Tgt Ion: 98 Resp: 189372  
 Ion Ratio Lower Upper  
 98 100  
 100 67.1 52.0 78.0



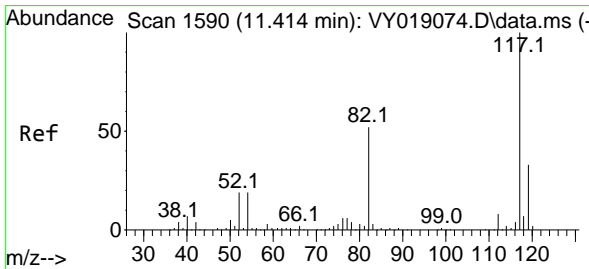
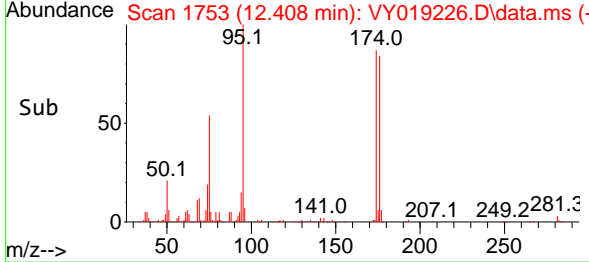
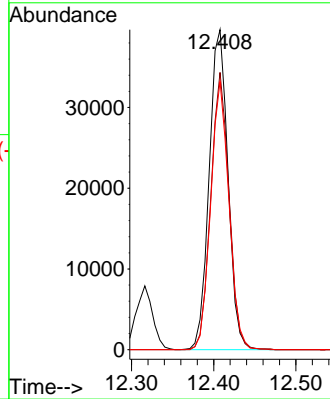
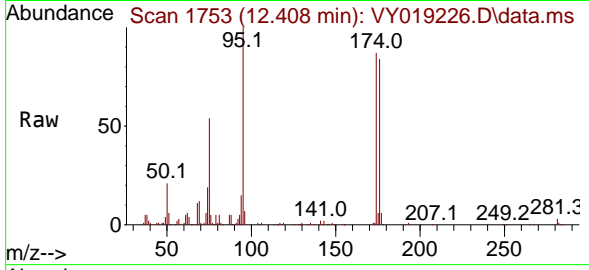


#62  
 4-Bromofluorobenzene  
 Concen: 46.996 ug/l  
 RT: 12.408 min Scan# 1753  
 Delta R.T. 0.006 min  
 Lab File: VY019226.D  
 Acq: 22 Aug 2024 17:33

Instrument : MSVOA\_Y  
 ClientSampleId : S-905-J-SO-0-0.5-081924-FD

Tgt Ion: 95 Resp: 63020

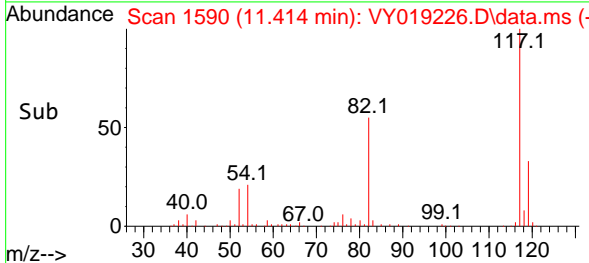
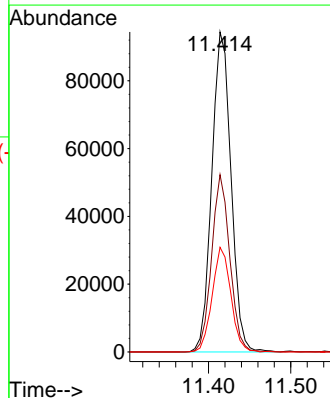
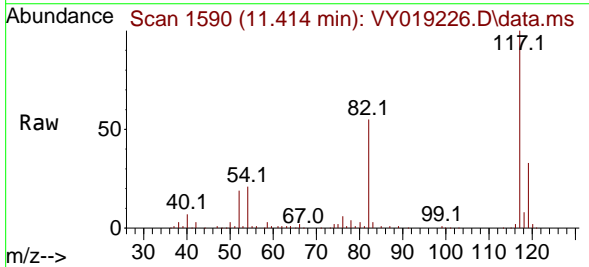
Ion	Ratio	Lower	Upper
95	100		
174	84.0	0.0	175.6
176	81.4	0.0	171.4

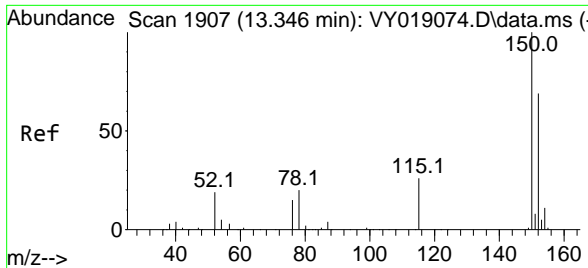


#63  
 Chlorobenzene-d5  
 Concen: 50.000 ug/l  
 RT: 11.414 min Scan# 1590  
 Delta R.T. 0.000 min  
 Lab File: VY019226.D  
 Acq: 22 Aug 2024 17:33

Tgt Ion: 117 Resp: 153261

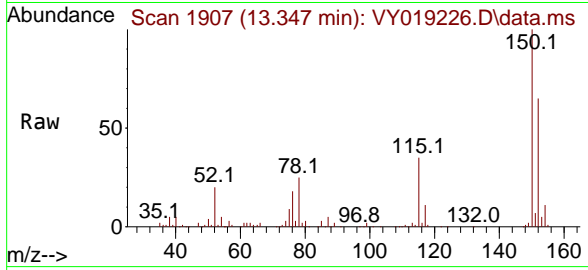
Ion	Ratio	Lower	Upper
117	100		
82	55.4	42.4	63.6
119	32.7	25.9	38.9





#72  
 1,4-Dichlorobenzene-d4  
 Concen: 50.000 ug/l  
 RT: 13.347 min Scan# 11  
 Delta R.T. 0.000 min  
 Lab File: VY019226.D  
 Acq: 22 Aug 2024 17:33

Instrument : MSVOA\_Y  
 ClientSampleId : S-905-J-SO-0-0.5-081924-FD



Tgt Ion:152 Resp: 46673

Ion	Ratio	Lower	Upper
152	100		
115	54.5	28.2	84.7
150	154.4	0.0	345.6

