

Data Path : Z:\voasrv\HPCHEM1\MSVOA_Y\Data\VY082224\
 Data File : VY019239.D
 Acq On : 23 Aug 2024 00:17
 Operator : SY/MD
 Sample : VY0822SBL02
 Misc : 5.00g/5.0mL/MSVOA_Y/SOIL
 ALS Vial : 35 Sample Multiplier: 1

Instrument :
 MSVOA_Y
 ClientSampleId :
 VY0822SBL02

Integration Parameters: RTEINT.P

Integrator: RTE
 Smoothing : ON Filtering: 5
 Sampling : 1 Min Area: 3 % of largest Peak
 Start Thrs: 0.2 Max Peaks: 100
 Stop Thrs : 0 Peak Location: TOP

If leading or trailing edge < 100 prefer < Baseline drop else tangent >
 Peak separation: 5

Method : Z:\voasrv\HPCHEM1\MSVOA_Y\methods\82Y081524S.M
 Title : SW846 8260

Signal : TIC: VY019239.D\data.ms

peak #	R.T. min	first scan	max scan	last scan	PK TY	peak height	corr. area	corr. % max.	% of total
1	4.610	463	474	488	rBV3	15026	47652	8.90%	1.349%
2	5.640	632	643	653	rBV7	5303	18037	3.37%	0.510%
3	6.878	835	846	860	rBV	14273	46739	8.73%	1.323%
4	7.628	959	969	975	rBV	97696	231467	43.25%	6.551%
5	7.701	975	981	995	rVB	173595	387729	72.45%	10.974%
6	8.055	1025	1039	1048	rBV2	88709	199080	37.20%	5.634%
7	8.609	1122	1130	1143	rBV	264477	506405	94.63%	14.333%
8	10.103	1368	1375	1383	rBV	299319	508261	94.98%	14.385%
9	10.511	1432	1442	1451	rBV	41484	76743	14.34%	2.172%
10	10.877	1495	1502	1510	rBV2	8512	15465	2.89%	0.438%
11	11.420	1583	1591	1604	rBV	322181	535133	100.00%	15.146%
12	12.407	1746	1753	1763	rBV2	273417	458259	85.63%	12.970%
13	13.346	1901	1907	1915	rVV	309266	483603	90.37%	13.687%
14	13.450	1919	1924	1933	rVB4	3547	7242	1.35%	0.205%
15	13.889	1990	1996	2003	rVB3	6999	11446	2.14%	0.324%

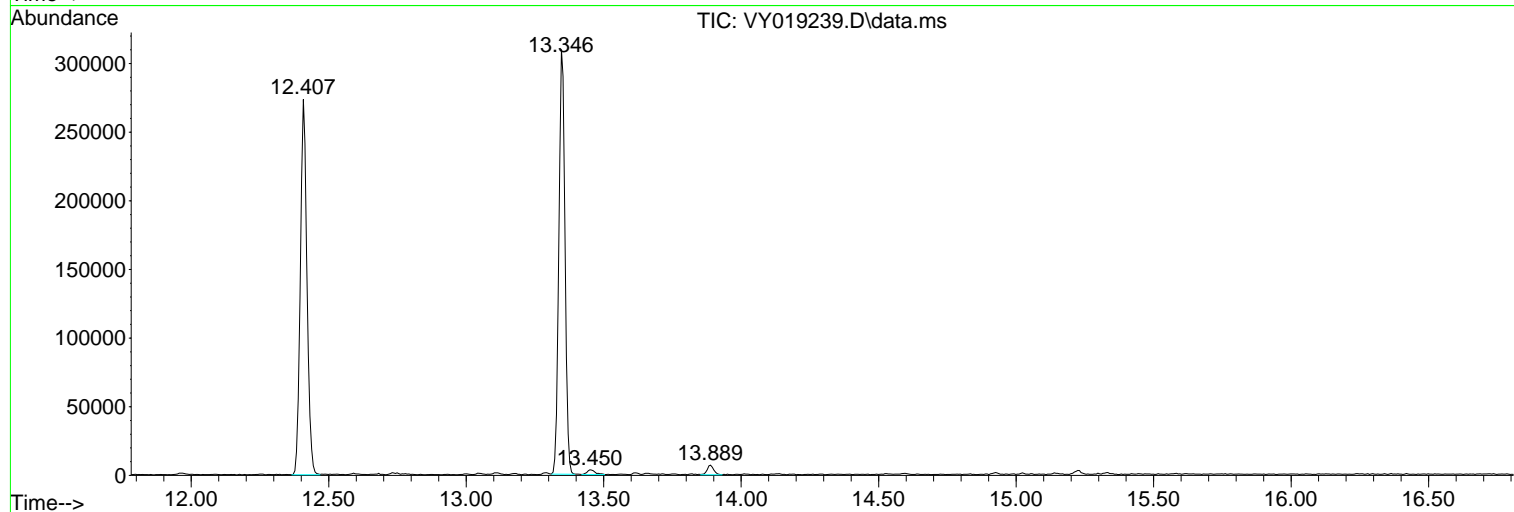
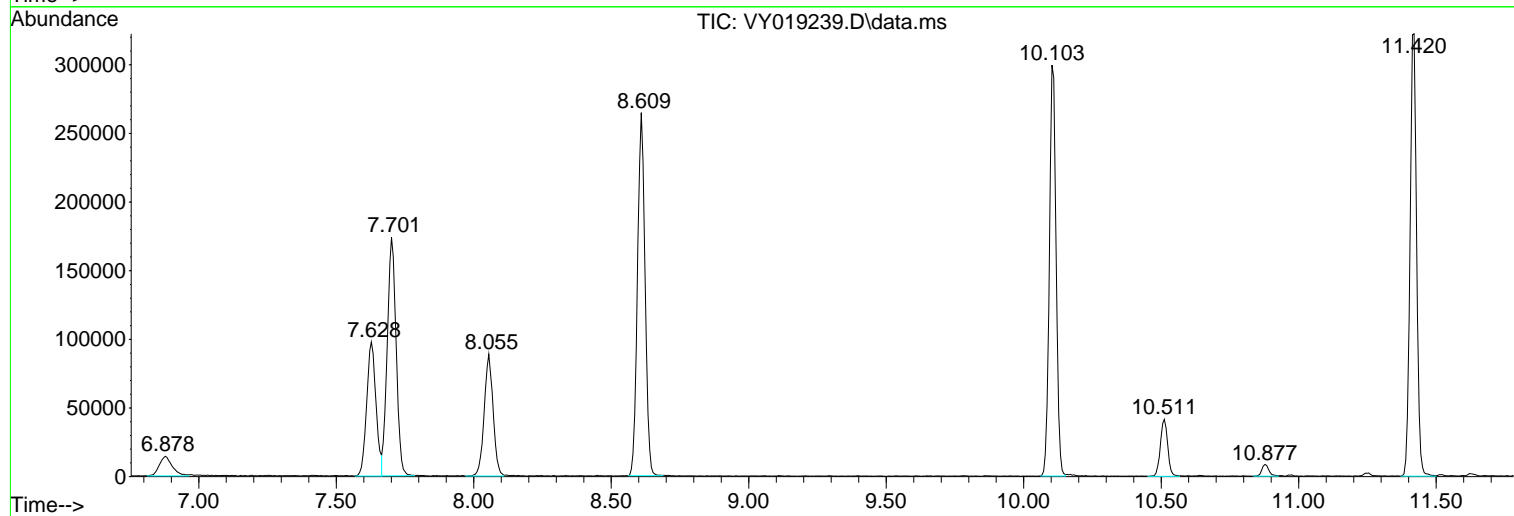
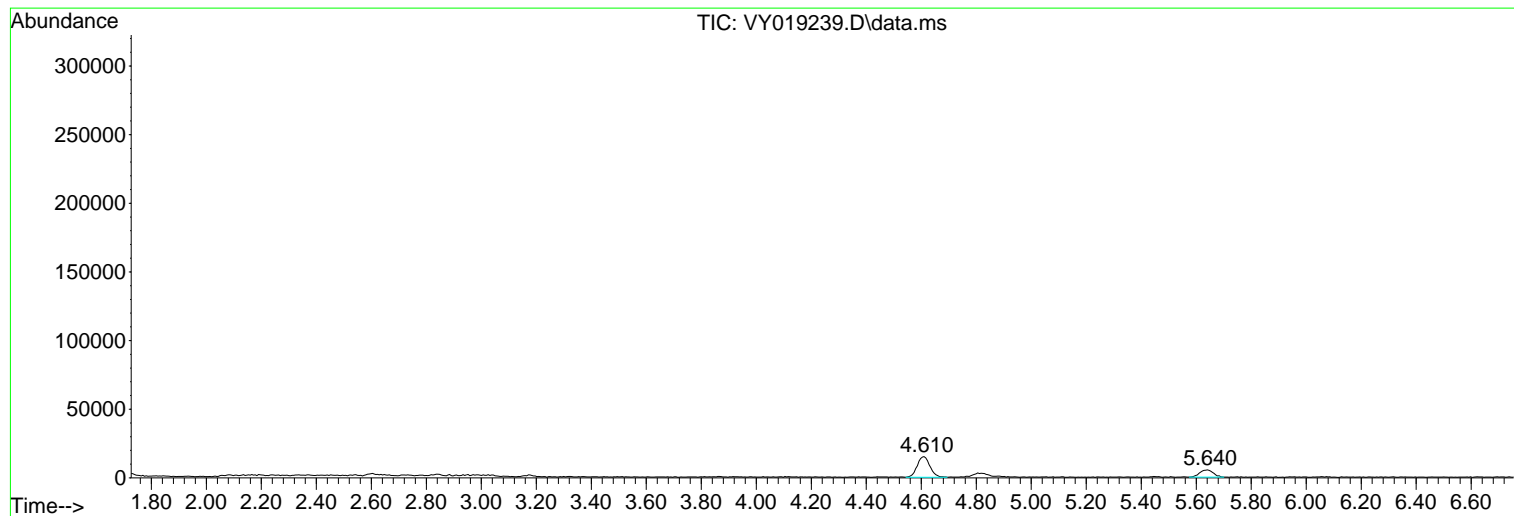
Sum of corrected areas: 3533261

Data Path : Z:\voasrv\HPCHEM1\MSVOA_Y\Data\VY082224\
Data File : VY019239.D
Acq On : 23 Aug 2024 00:17
Operator : SY/MD
Sample : VY0822SBL02
Misc : 5.00g/5.0mL/MSVOA_Y/SOIL
ALS Vial : 35 Sample Multiplier: 1

Instrument :
MSVOA_Y
ClientSampleId :
VY0822SBL02

Quant Method : Z:\voasrv\HPCHEM1\MSVOA_Y\methods\82Y081524S.M
Quant Title : SW846 8260

TIC Library : C:\Database\NIST20.L
TIC Integration Parameters: LSCINT.P



Library Search Compound Report

Data Path : Z:\voasrv\HPCHEM1\MSVOA_Y\Data\VY082224\
Data File : VY019239.D
Acq On : 23 Aug 2024 00:17
Operator : SY/MD
Sample : VY0822SBL02
Misc : 5.00g/5.0mL/MSVOA_Y/SOIL
ALS Vial : 35 Sample Multiplier: 1

Instrument :
MSVOA_Y
ClientSampleId :
VY0822SBL02

Quant Method : Z:\voasrv\HPCHEM1\MSVOA_Y\methods\82Y081524S.M
Quant Title : SW846 8260

TIC Library : C:\Database\NIST20.L
TIC Integration Parameters: LSCINT.P

No Library Search Compounds Detected

Data Path : Z:\voasrv\HPCHEM1\MSVOA_Y\Data\VY082224\
Data File : VY019239.D
Acq On : 23 Aug 2024 00:17
Operator : SY/MD
Sample : VY0822SBL02
Misc : 5.00g/5.0mL/MSVOA_Y/SOIL
ALS Vial : 35 Sample Multiplier: 1

Instrument :
MSVOA_Y
ClientSampleId :
VY0822SBL02

Quant Method : Z:\voasrv\HPCHEM1\MSVOA_Y\methods\82Y081524S.M
Quant Title : SW846 8260

TIC Library : C:\Database\NIST0.L
TIC Integration Parameters: LSCINT.P

TIC Top Hit name	RT	EstConc	Units	Response	#	RT	Resp	Conc
------------------	----	---------	-------	----------	---	----	------	------
