

Data Path : Z:\voasrv\HPCHEM1\MSVOA_Y\Data\VY082324\
 Data File : VY019251.D
 Acq On : 23 Aug 2024 12:39
 Operator : SY/MD
 Sample : VIBLK
 Misc : 5.00g/5.0mL/MSVOA_Y/SOIL
 ALS Vial : 7 Sample Multiplier: 1

Instrument :
 MSVOA_Y
 ClientSampleId :

Quant Time: Aug 23 22:56:16 2024
 Quant Method : Z:\voasrv\HPCHEM1\MSVOA_Y\methods\82Y081524S.M
 Quant Title : SW846 8260
 QLast Update : Fri Aug 16 05:10:30 2024
 Response via : Initial Calibration

Compound	R.T.	QIon	Response	Conc	Units	Dev(Min)

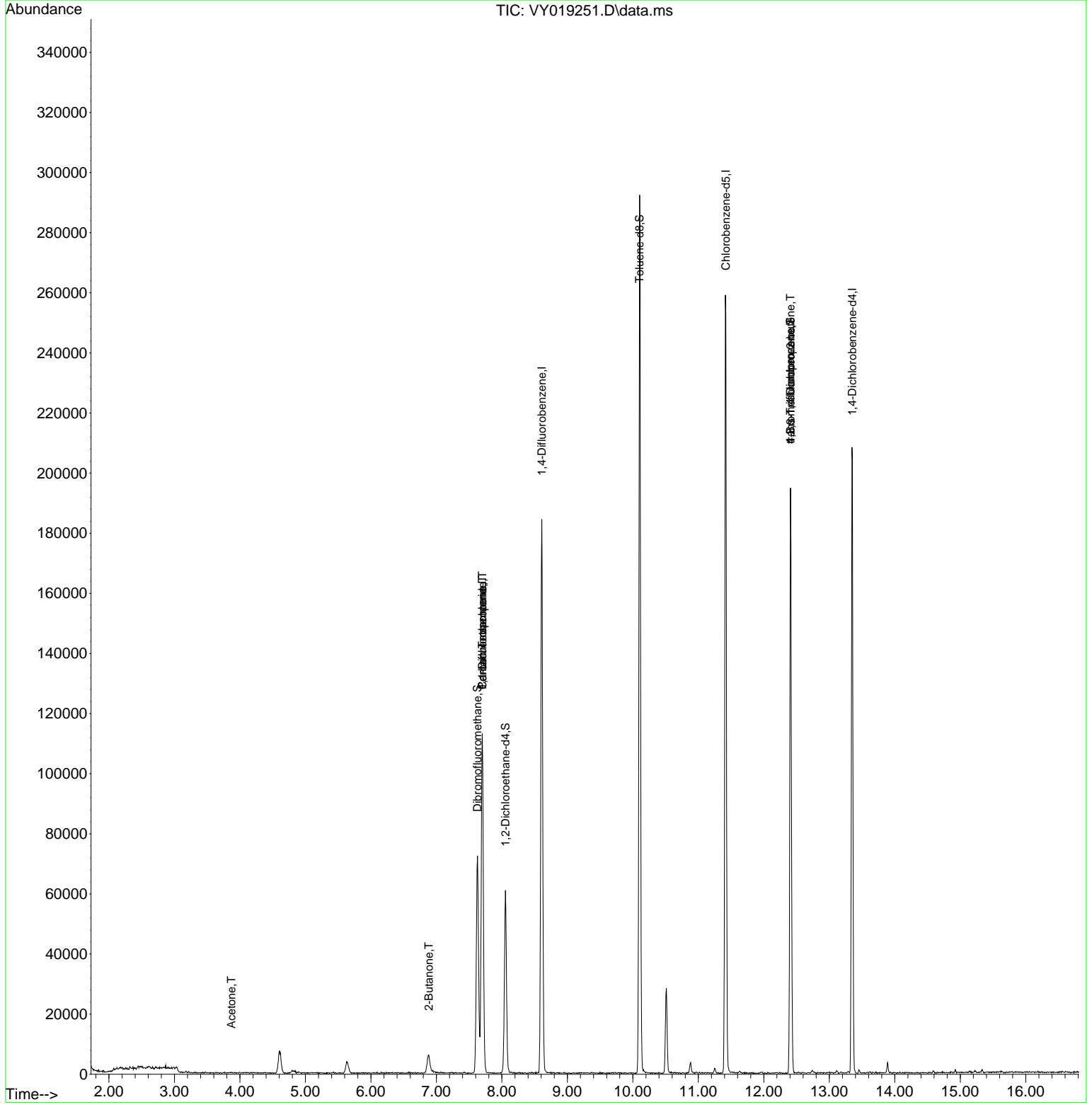
Internal Standards						
1) Pentafluorobenzene	7.701	168	89472	50.000	ug/l	0.00
34) 1,4-Difluorobenzene	8.609	114	162560	50.000	ug/l	0.00
63) Chlorobenzene-d5	11.420	117	144208	50.000	ug/l	0.00
72) 1,4-Dichlorobenzene-d4	13.352	152	53556	50.000	ug/l	0.00
System Monitoring Compounds						
33) 1,2-Dichloroethane-d4	8.054	65	45104	50.290	ug/l	0.00
Spiked Amount	50.000	Range 50 - 163	Recovery	=	100.580%	
35) Dibromofluoromethane	7.628	113	50315	47.337	ug/l	0.00
Spiked Amount	50.000	Range 54 - 147	Recovery	=	94.680%	
50) Toluene-d8	10.103	98	184063	48.120	ug/l	0.00
Spiked Amount	50.000	Range 58 - 134	Recovery	=	96.240%	
62) 4-Bromofluorobenzene	12.407	95	53231	40.823	ug/l	0.00
Spiked Amount	50.000	Range 29 - 146	Recovery	=	81.640%	
Target Compounds						
						Qvalue
5) Bromomethane	2.604	94	281	Below Cal		85
11) Tert butyl alcohol	4.842	59	252	Below Cal	#	88
16) Acetone	3.872	43	270	1.623	ug/l #	36
20) Methylene Chloride	4.598	84	2564	Below Cal		97
25) 2-Butanone	6.884	43	301	1.124	ug/l #	41
31) Cyclohexane	7.701	56	1869	Below Cal	#	1
36) 1,1-Dichloropropene	7.701	75	6756	4.629	ug/l #	49
38) Carbon Tetrachloride	7.701	117	8965	5.300	ug/l #	16
76) 1,2,3-Trichloropropane	12.407	75	28172	53.340	ug/l #	100
81) trans-1,4-Dichloro-2-b...	12.407	75	28172	131.732	ug/l #	16

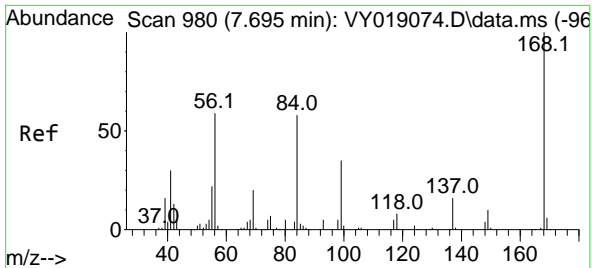
(#) = qualifier out of range (m) = manual integration (+) = signals summed

Data Path : Z:\voasrv\HPCHEM1\MSVOA_Y\Data\VY082324\
 Data File : VY019251.D
 Acq On : 23 Aug 2024 12:39
 Operator : SY/MD
 Sample : VI BLK
 Misc : 5.00g/5.0mL/MSVOA_Y/SOIL
 ALS Vial : 7 Sample Multiplier: 1

Instrument :
 MSVOA_Y
 ClientSampleId :

Quant Time: Aug 23 22:56:16 2024
 Quant Method : Z:\voasrv\HPCHEM1\MSVOA_Y\methods\82Y081524S.M
 Quant Title : SW846 8260
 QLast Update : Fri Aug 16 05:10:30 2024
 Response via : Initial Calibration

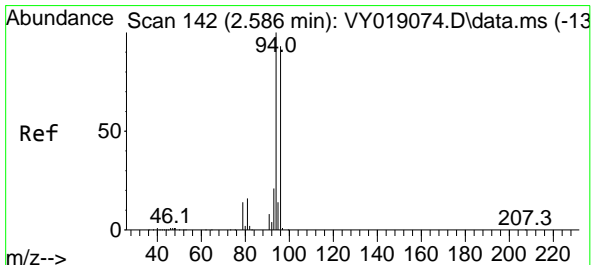
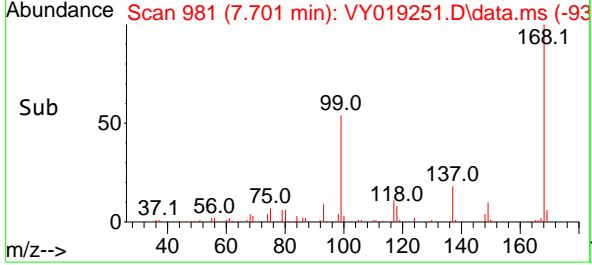
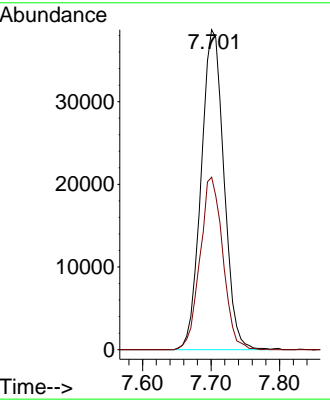
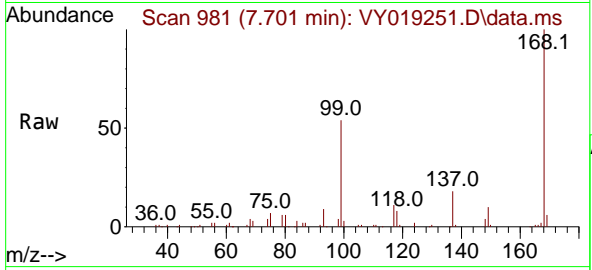




#1
 Pentafluorobenzene
 Concen: 50.000 ug/l
 RT: 7.701 min Scan# 91
 Delta R.T. 0.006 min
 Lab File: VY019251.D
 Acq: 23 Aug 2024 12:39

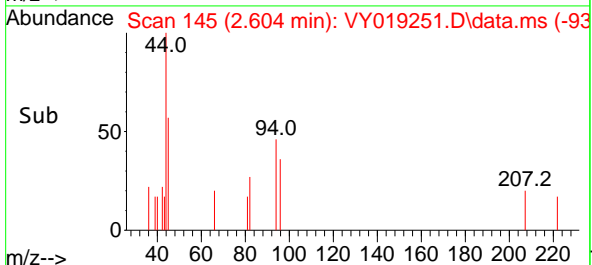
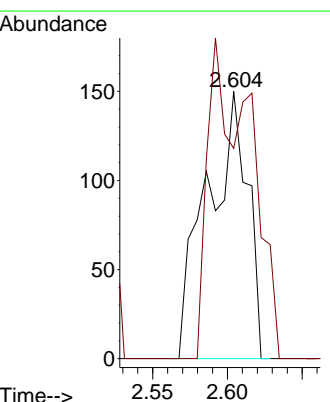
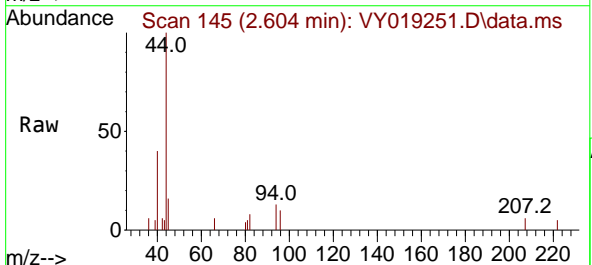
Instrument :
 MSVOA_Y
 ClientSampleId :

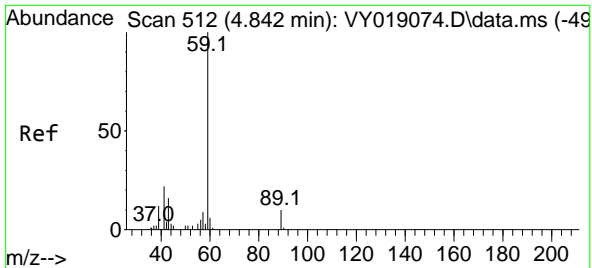
Tgt Ion:168 Resp: 89472
 Ion Ratio Lower Upper
 168 100
 99 53.9 39.1 58.7



#5
 Bromomethane
 Concen: Below Cal
 RT: 2.604 min Scan# 145
 Delta R.T. 0.018 min
 Lab File: VY019251.D
 Acq: 23 Aug 2024 12:39

Tgt Ion: 94 Resp: 281
 Ion Ratio Lower Upper
 94 100
 96 78.7 74.1 111.1

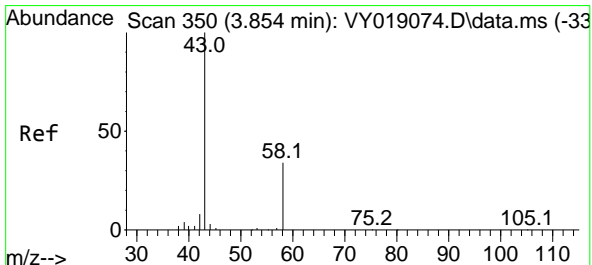
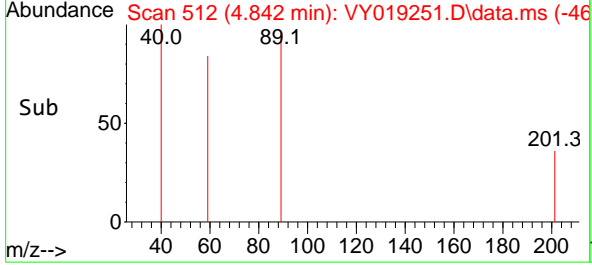
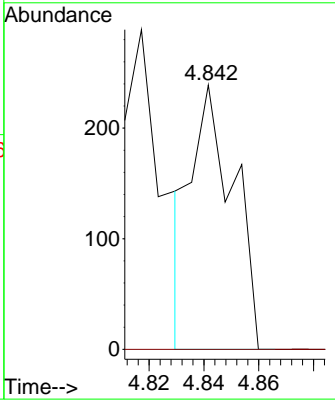
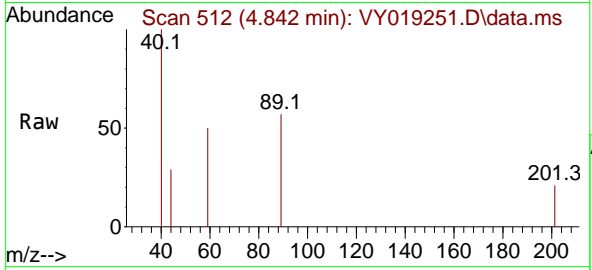




#11
 Tert butyl alcohol
 Concen: Below Cal
 RT: 4.842 min Scan# 511
 Delta R.T. -0.000 min
 Lab File: VY019251.D
 Acq: 23 Aug 2024 12:39

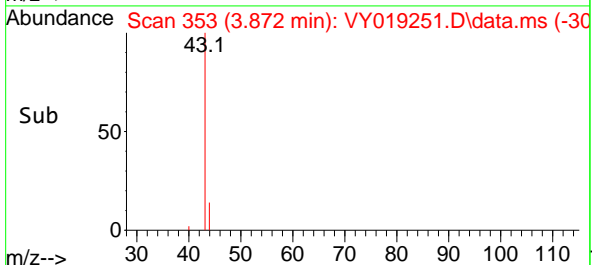
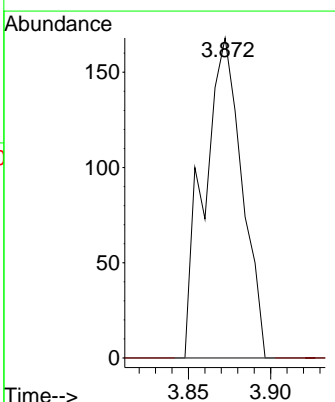
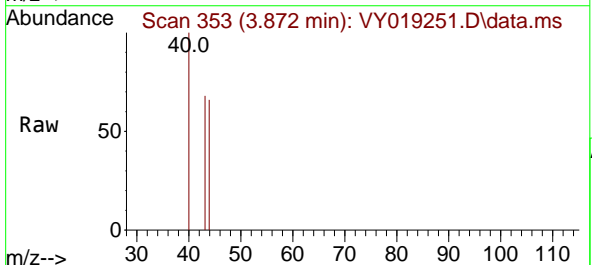
Instrument : MSVOA_Y
 ClientSampleId :

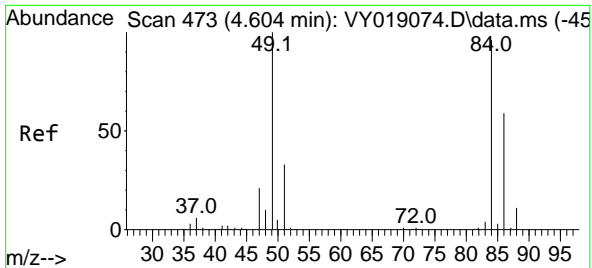
Tgt Ion: 59 Resp: 252
 Ion Ratio Lower Upper
 59 100
 57 0.0 3.0 4.6#



#16
 Acetone
 Concen: 1.623 ug/l
 RT: 3.872 min Scan# 353
 Delta R.T. 0.018 min
 Lab File: VY019251.D
 Acq: 23 Aug 2024 12:39

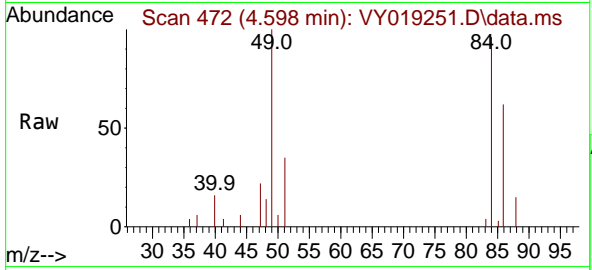
Tgt Ion: 43 Resp: 270
 Ion Ratio Lower Upper
 43 100
 58 0.0 31.7 47.5#





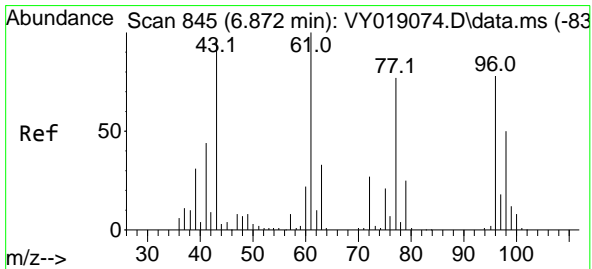
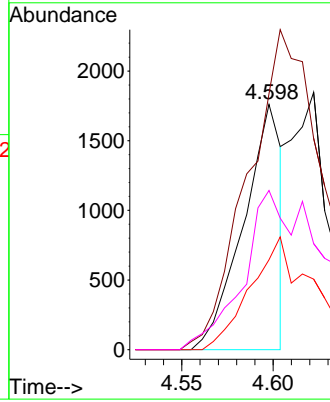
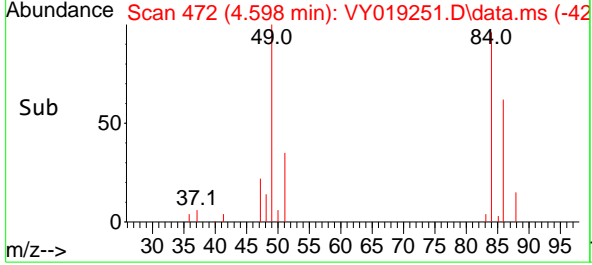
#20
 Methylene Chloride
 Concen: Below Cal
 RT: 4.598 min Scan# 41
 Delta R.T. -0.006 min
 Lab File: VY019251.D
 Acq: 23 Aug 2024 12:39

Instrument :
 MSVOA_Y
 ClientSampleId :

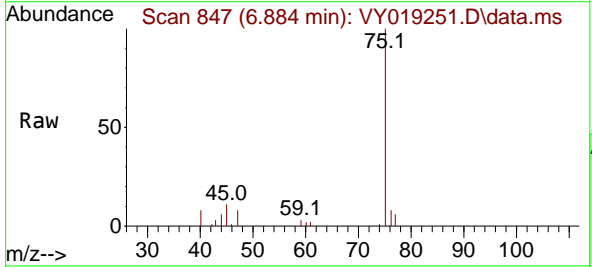


Tgt Ion: 84 Resp: 2564

Ion	Ratio	Lower	Upper
84	100		
49	104.4	84.4	126.6
51	36.6	26.0	39.0
86	64.9	49.5	74.3

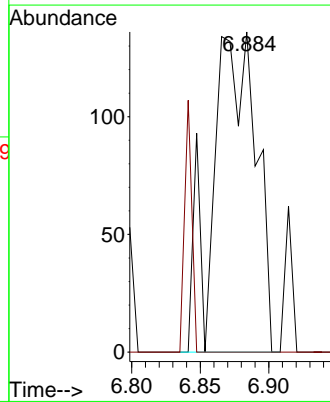
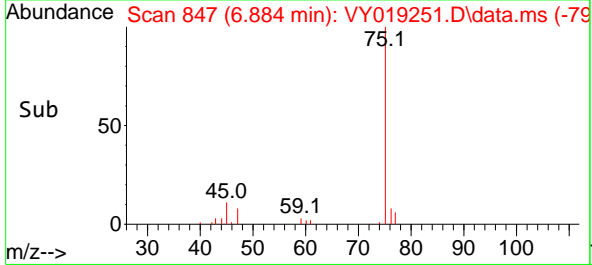


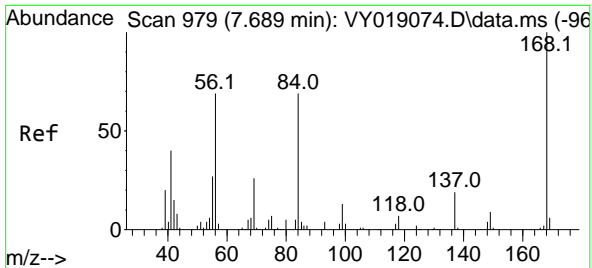
#25
 2-Butanone
 Concen: 1.124 ug/l
 RT: 6.884 min Scan# 847
 Delta R.T. 0.012 min
 Lab File: VY019251.D
 Acq: 23 Aug 2024 12:39



Tgt Ion: 43 Resp: 301

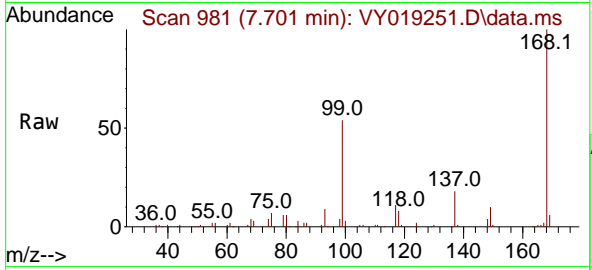
Ion	Ratio	Lower	Upper
43	100		
72	0.0	27.3	40.9#



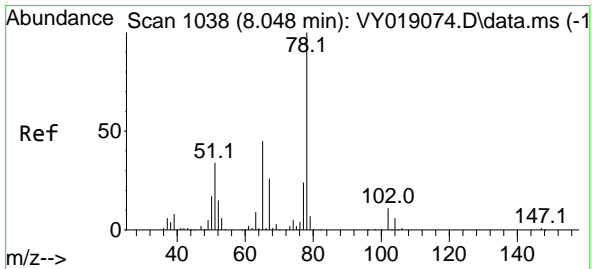
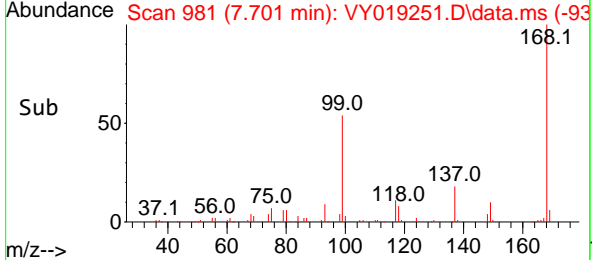
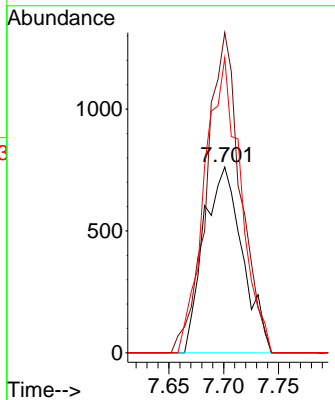


#31
 Cyclohexane
 Concen: Below Cal
 RT: 7.701 min Scan# 91
 Delta R.T. 0.012 min
 Lab File: VY019251.D
 Acq: 23 Aug 2024 12:39

Instrument :
 MSVOA_Y
 ClientSampleId :

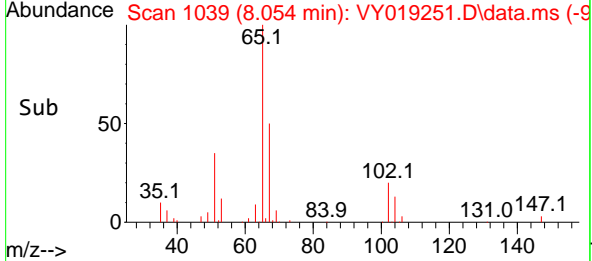
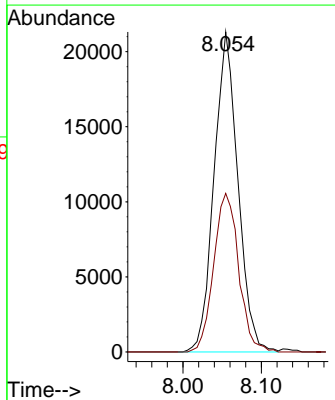
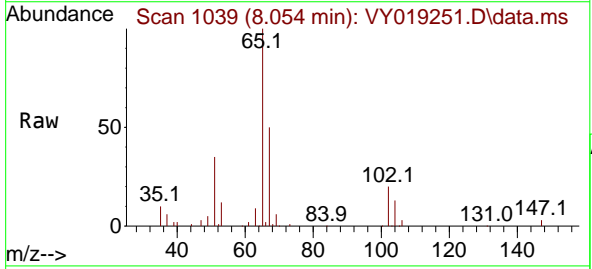


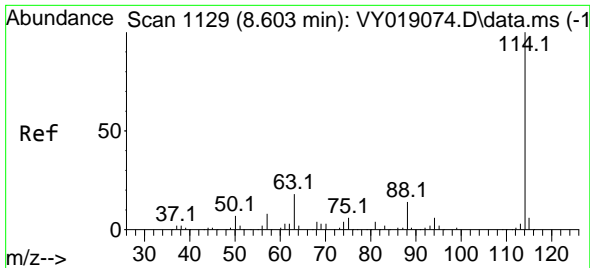
Tgt Ion: 56 Resp: 1869
 Ion Ratio Lower Upper
 56 100
 69 172.4 28.7 43.1#
 84 158.9 77.7 116.5#



#33
 1,2-Dichloroethane-d4
 Concen: 50.290 ug/l
 RT: 8.054 min Scan# 1039
 Delta R.T. 0.006 min
 Lab File: VY019251.D
 Acq: 23 Aug 2024 12:39

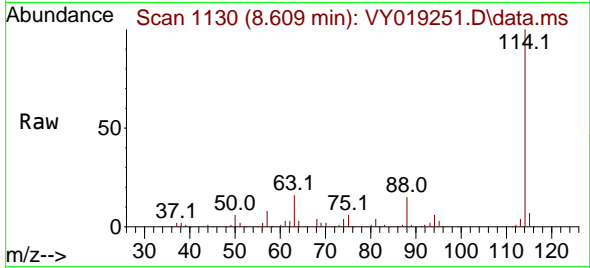
Tgt Ion: 65 Resp: 45104
 Ion Ratio Lower Upper
 65 100
 67 52.0 0.0 109.6



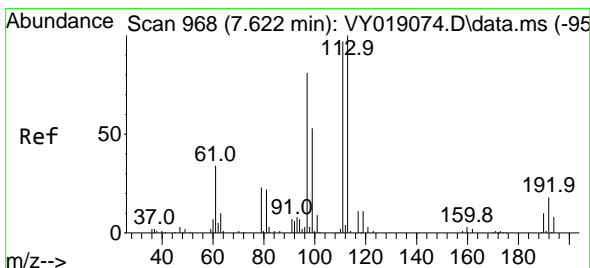
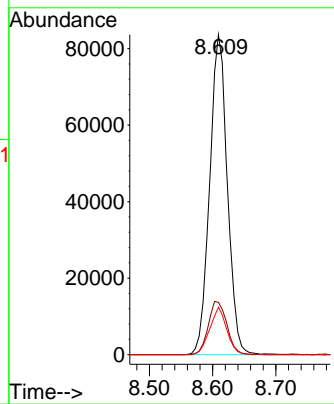
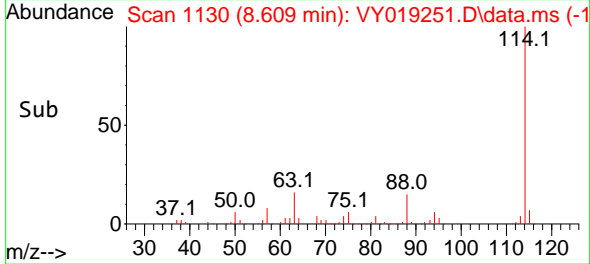


#34
 1,4-Difluorobenzene
 Concen: 50.000 ug/l
 RT: 8.609 min Scan# 1129
 Delta R.T. 0.006 min
 Lab File: VY019251.D
 Acq: 23 Aug 2024 12:39

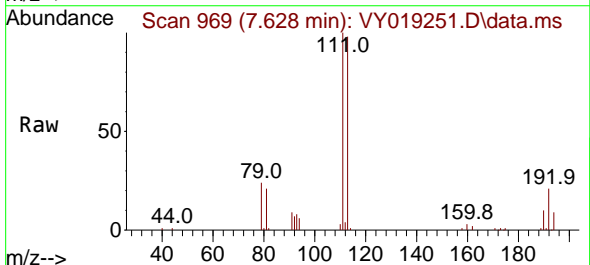
Instrument :
 MSVOA_Y
 ClientSampleId :



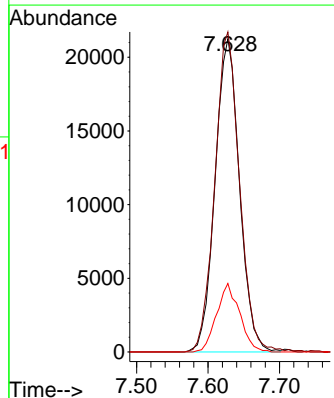
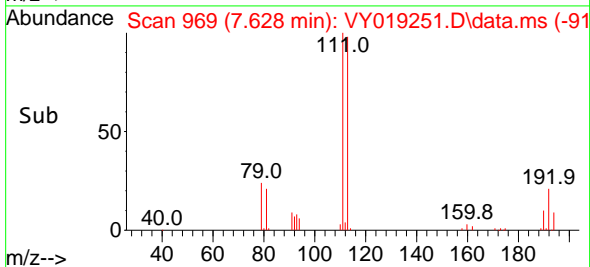
Tgt Ion:114 Resp: 162560
 Ion Ratio Lower Upper
 114 100
 63 16.3 0.0 35.0
 88 14.9 0.0 27.2

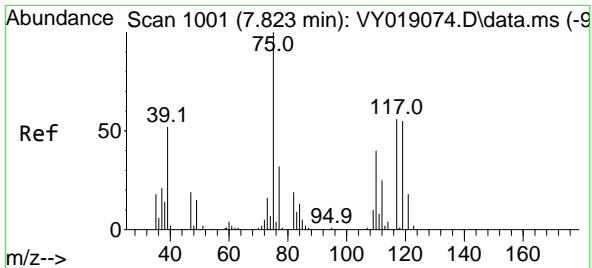


#35
 Dibromofluoromethane
 Concen: 47.337 ug/l
 RT: 7.628 min Scan# 969
 Delta R.T. 0.006 min
 Lab File: VY019251.D
 Acq: 23 Aug 2024 12:39



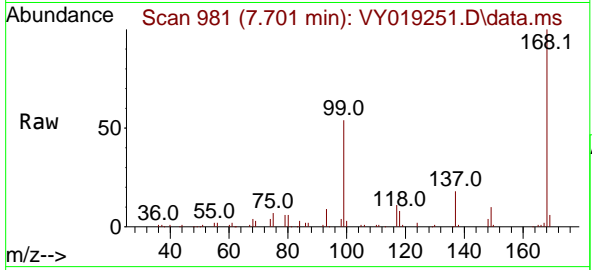
Tgt Ion:113 Resp: 50315
 Ion Ratio Lower Upper
 113 100
 111 103.5 82.2 123.4
 192 20.7 15.9 23.9



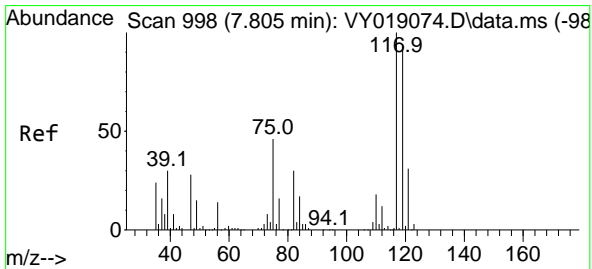
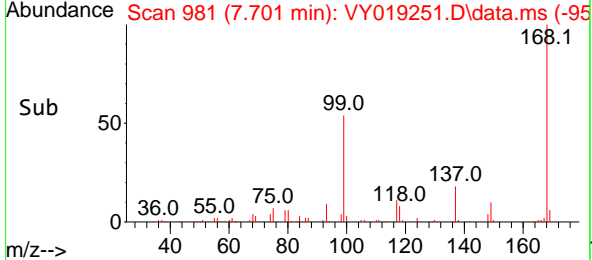
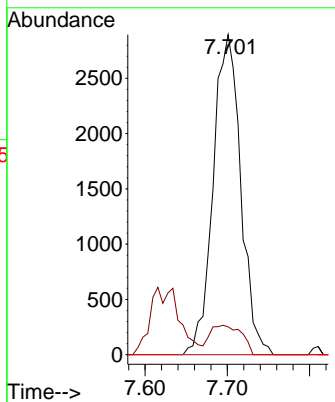


#36
 1,1-Dichloropropene
 Concen: 4.629 ug/l
 RT: 7.701 min Scan# 981
 Delta R.T. -0.122 min
 Lab File: VY019251.D
 Acq: 23 Aug 2024 12:39

Instrument :
 MSVOA_Y
 ClientSampleId :

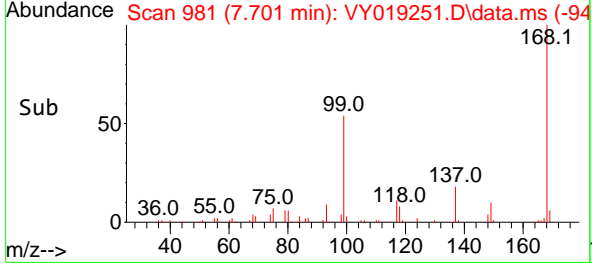
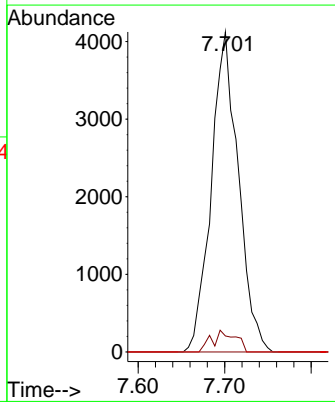
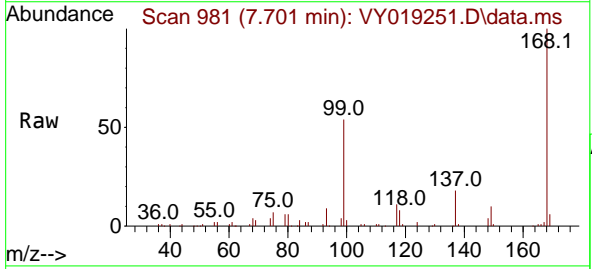


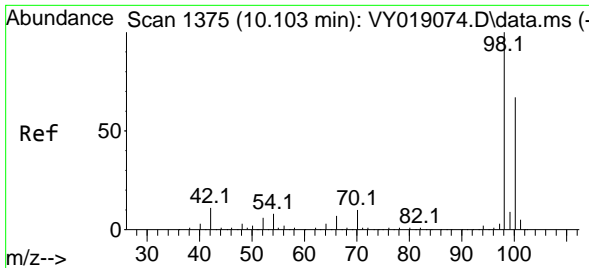
Tgt Ion: 75 Resp: 6756
 Ion Ratio Lower Upper
 75 100
 110 10.4 19.0 57.0#
 77 0.0 25.3 37.9#



#38
 Carbon Tetrachloride
 Concen: 5.300 ug/l
 RT: 7.701 min Scan# 981
 Delta R.T. -0.104 min
 Lab File: VY019251.D
 Acq: 23 Aug 2024 12:39

Tgt Ion: 117 Resp: 8965
 Ion Ratio Lower Upper
 117 100
 119 5.0 75.8 113.6#
 121 0.0 24.0 36.0#

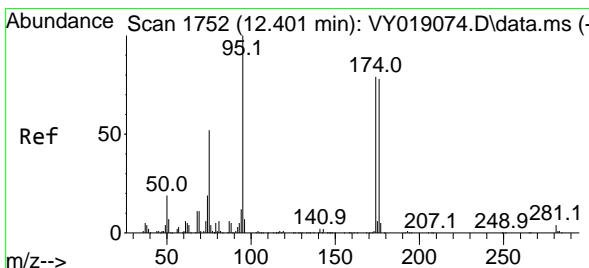
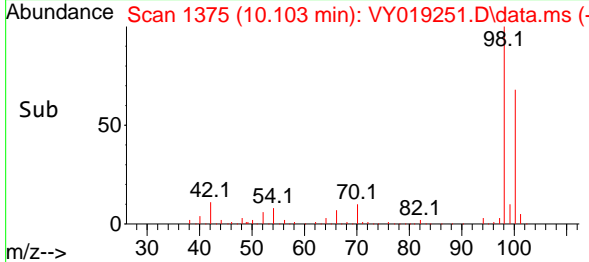
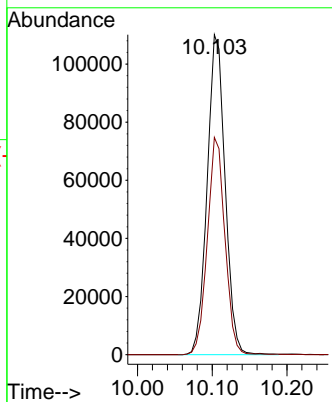
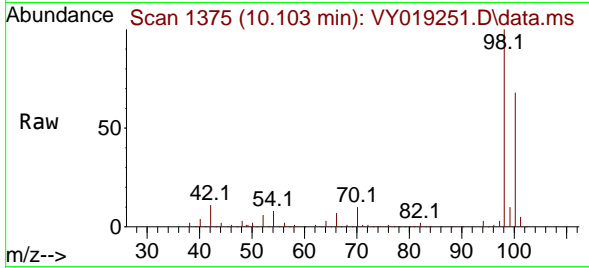




#50
 Toluene-d8
 Concen: 48.120 ug/l
 RT: 10.103 min Scan# 11
 Delta R.T. -0.000 min
 Lab File: VY019251.D
 Acq: 23 Aug 2024 12:39

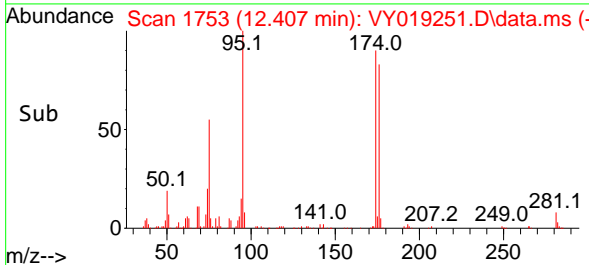
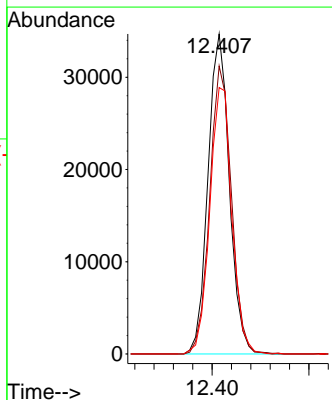
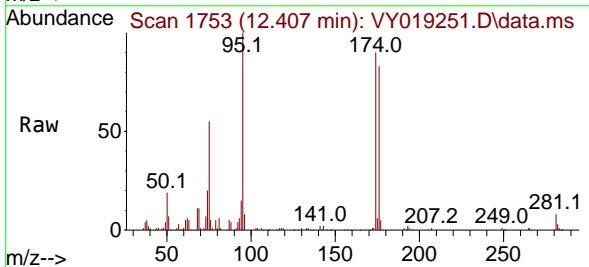
Instrument :
 MSVOA_Y
 ClientSampleId :

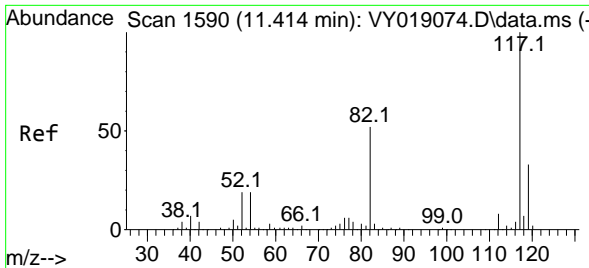
Tgt Ion: 98 Resp: 184063
 Ion Ratio Lower Upper
 98 100
 100 66.4 52.0 78.0



#62
 4-Bromofluorobenzene
 Concen: 40.823 ug/l
 RT: 12.407 min Scan# 1753
 Delta R.T. 0.006 min
 Lab File: VY019251.D
 Acq: 23 Aug 2024 12:39

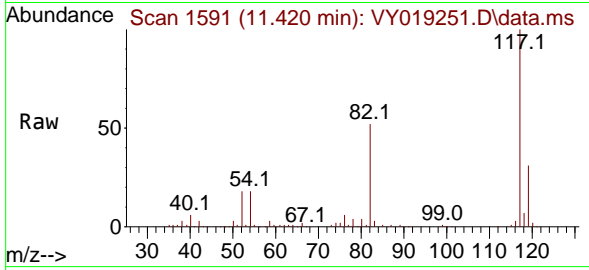
Tgt Ion: 95 Resp: 53231
 Ion Ratio Lower Upper
 95 100
 174 91.4 0.0 175.6
 176 85.9 0.0 171.4



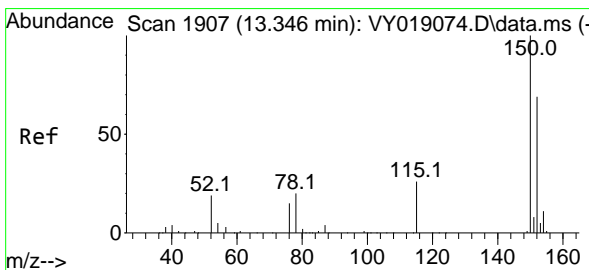
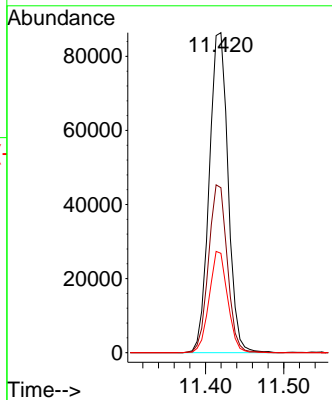
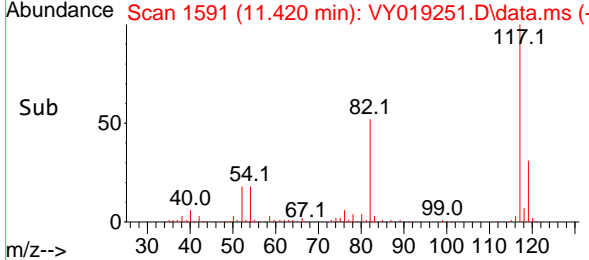


#63
 Chlorobenzene-d5
 Concen: 50.000 ug/l
 RT: 11.420 min Scan# 11
 Delta R.T. 0.006 min
 Lab File: VY019251.D
 Acq: 23 Aug 2024 12:39

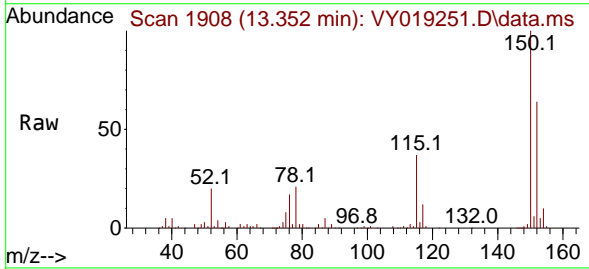
Instrument :
 MSVOA_Y
 ClientSampleId :



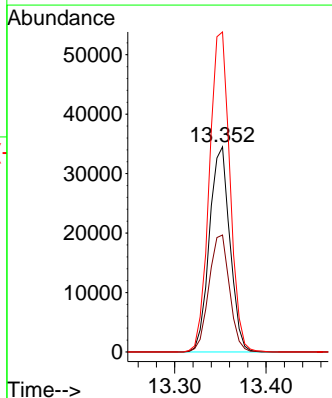
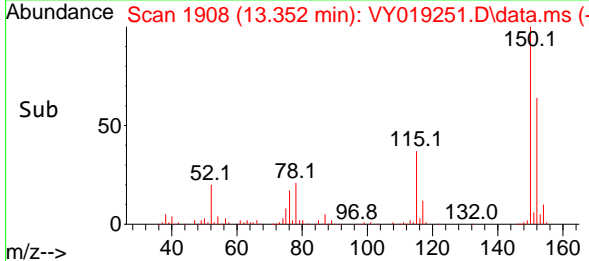
Tgt Ion:117 Resp: 144208
 Ion Ratio Lower Upper
 117 100
 82 51.5 42.4 63.6
 119 31.1 25.9 38.9

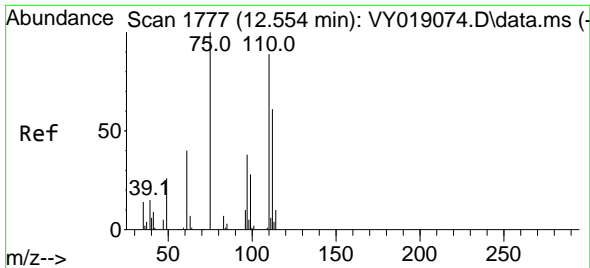


#72
 1,4-Dichlorobenzene-d4
 Concen: 50.000 ug/l
 RT: 13.352 min Scan# 1908
 Delta R.T. 0.006 min
 Lab File: VY019251.D
 Acq: 23 Aug 2024 12:39



Tgt Ion:152 Resp: 53556
 Ion Ratio Lower Upper
 152 100
 115 57.4 28.2 84.7
 150 156.5 0.0 345.6

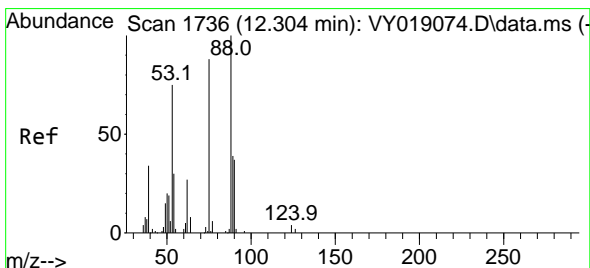
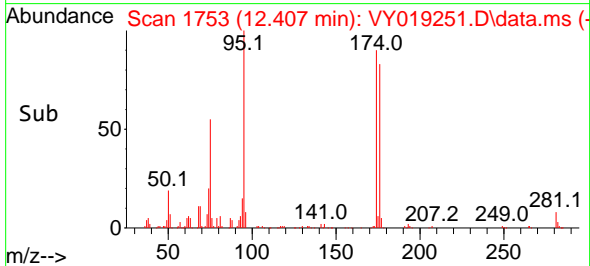
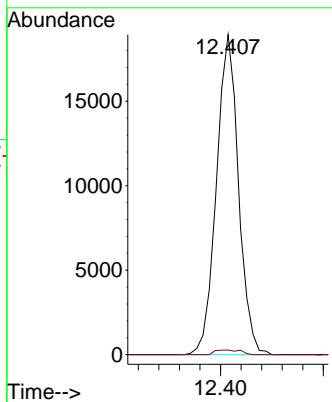
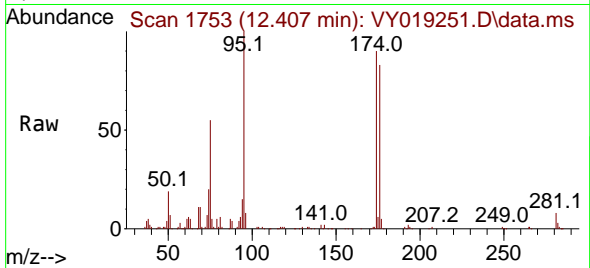




#76
 1,2,3-Trichloropropane
 Concen: 53.340 ug/l
 RT: 12.407 min Scan# 1753
 Delta R.T. -0.146 min
 Lab File: VY019251.D
 Acq: 23 Aug 2024 12:39

Instrument : MSVOA_Y
 ClientSampleId :

Tgt Ion: 75 Resp: 28172
 Ion Ratio Lower Upper
 75 100
 77 1.7 0.0 0.0#



#81
 trans-1,4-Dichloro-2-butene
 Concen: 131.732 ug/l
 RT: 12.407 min Scan# 1753
 Delta R.T. 0.104 min
 Lab File: VY019251.D
 Acq: 23 Aug 2024 12:39

Tgt Ion: 75 Resp: 28172
 Ion Ratio Lower Upper
 75 100
 53 0.0 66.8 100.2#
 89 0.4 35.8 53.6#

