

Data Path : Z:\voasrv\HPCHEM1\MSVOA_Y\Data\VY082423\
 Data File : VY015315.D
 Acq On : 24 Aug 2023 16:31
 Operator : SY/MD
 Sample : 04119-03
 Misc : 5.08g/5.0mL/MSVOA_Y/SOIL
 ALS Vial : 11 Sample Multiplier: 1

Instrument :
 MSVOA_Y
 ClientSampleId :
 RB21153

Integration Parameters: RTEINT.P

Integrator: RTE
 Smoothing : ON Filtering: 5
 Sampling : 1 Min Area: 3 % of largest Peak
 Start Thrs: 0.2 Max Peaks: 100
 Stop Thrs : 0 Peak Location: TOP

If leading or trailing edge < 100 prefer < Baseline drop else tangent >
 Peak separation: 5

Method : Z:\voasrv\HPCHEM1\MSVOA_Y\methods\82Y081423S.M
 Title : SW846 8260

Signal : TIC: VY015315.D\data.ms

peak #	R.T. min	first scan	max scan	last scan	PK TY	peak height	corr. area	corr. % max.	% of total
1	2.125	44	50	51	rBV3	1000	1585	1.81%	0.311%
2	2.668	136	139	143	rVB2	789	1066	1.22%	0.209%
3	3.948	343	349	356	rVB3	489	1123	1.28%	0.221%
4	4.192	384	389	393	rBV2	494	883	1.01%	0.173%
5	4.710	467	474	484	rVB4	1518	4425	5.06%	0.869%
6	5.740	638	643	654	rBV5	1222	2989	3.42%	0.587%
7	6.978	833	846	855	rBV	7812	24913	28.50%	4.892%
8	7.715	959	967	973	rBV2	12165	29611	33.87%	5.815%
9	7.789	973	979	987	rVB	23997	52350	59.89%	10.280%
10	8.142	1028	1037	1049	rBV2	13195	30486	34.87%	5.987%
11	8.691	1119	1127	1135	rBV	33278	66341	75.89%	13.027%
12	10.178	1364	1371	1382	rBV	50911	87416	100.00%	17.166%
13	10.581	1430	1437	1443	rBV2	2312	3936	4.50%	0.773%
14	10.947	1492	1497	1504	rVB3	1924	3203	3.66%	0.629%
15	11.489	1579	1586	1595	rBV	44140	72935	83.43%	14.322%
16	12.483	1743	1749	1756	rBV2	34227	56569	64.71%	11.108%
17	13.178	1859	1863	1870	rVB3	643	1508	1.73%	0.296%
18	13.428	1898	1904	1913	rVB	36266	58863	67.34%	11.559%
19	13.958	1987	1991	1997	rVB3	1157	2025	2.32%	0.398%
20	14.726	2115	2117	2122	rVB5	759	1275	1.46%	0.250%
21	14.867	2138	2140	2146	rVB4	1241	1732	1.98%	0.340%
22	14.928	2146	2150	2152	rBV2	843	1018	1.16%	0.200%
23	16.372	2381	2387	2389	rBV4	660	1072	1.23%	0.211%
24	16.586	2419	2422	2426	rBV3	626	1017	1.16%	0.200%
25	16.744	2445	2448	2451	rVV4	574	904	1.03%	0.178%

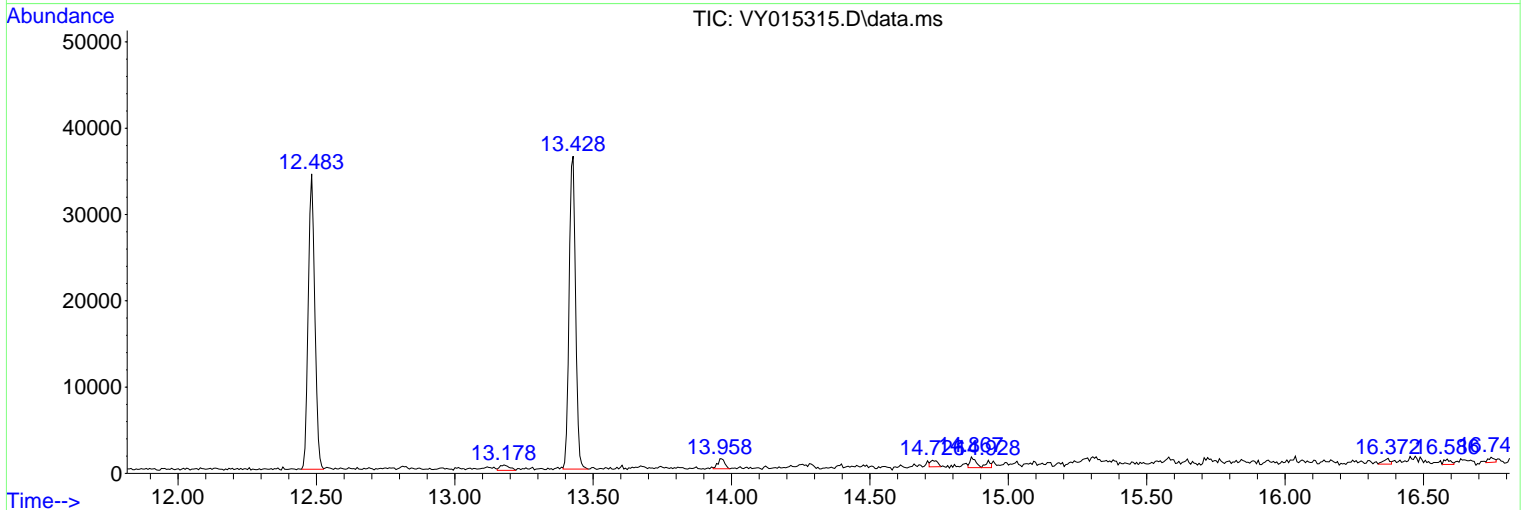
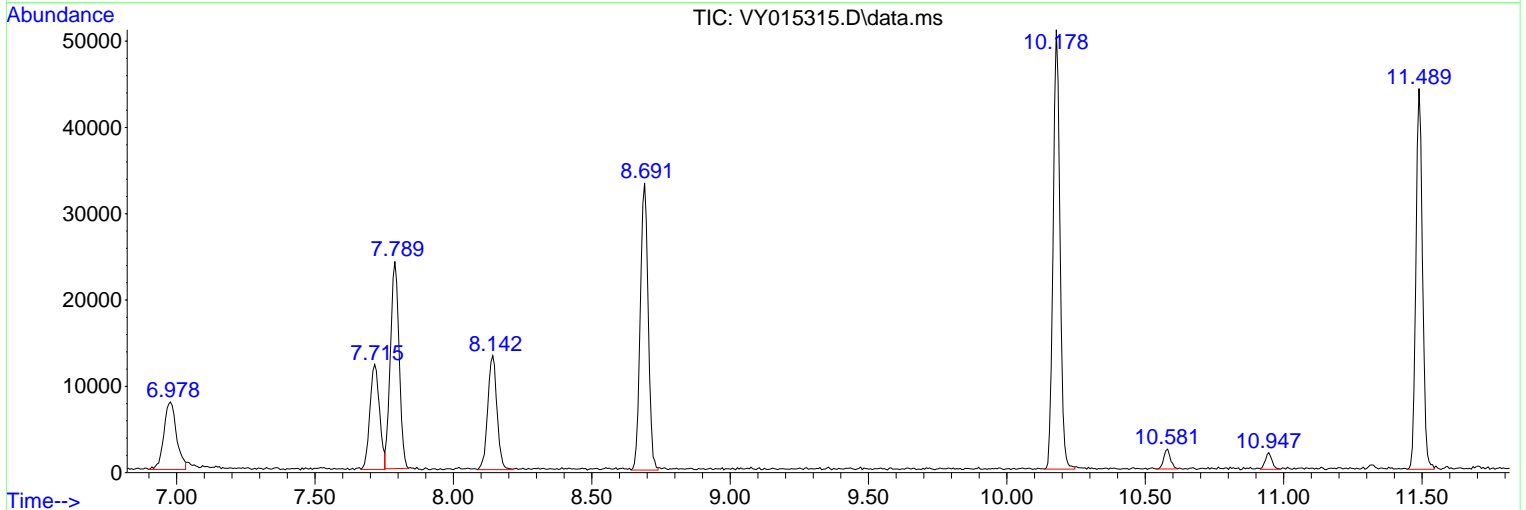
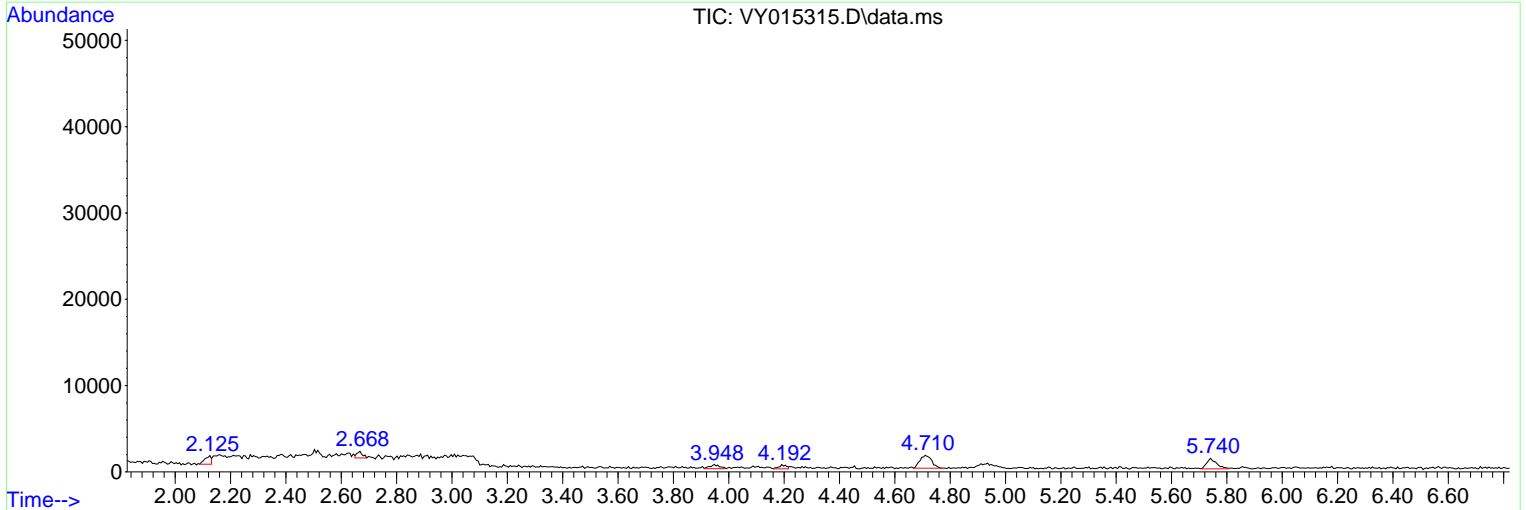
Sum of corrected areas: 509245

Data Path : Z:\voasrv\HPCHEM1\MSVOA_Y\Data\VY082423\
 Data File : VY015315.D
 Acq On : 24 Aug 2023 16:31
 Operator : SY/MD
 Sample : 04119-03
 Misc : 5.08g/5.0mL/MSVOA_Y/SOIL
 ALS Vial : 11 Sample Multiplier: 1

Instrument :
 MSVOA_Y
 ClientSampleId :
 RB21153

Quant Method : Z:\voasrv\HPCHEM1\MSVOA_Y\methods\82Y081423S.M
 Quant Title : SW846 8260

TIC Library : C:\Database\NIST20.L
 TIC Integration Parameters: LSCINT.P



Library Search Compound Report

Data Path : Z:\voasrv\HPCHEM1\MSVOA_Y\Data\VY082423\
Data File : VY015315.D
Acq On : 24 Aug 2023 16:31
Operator : SY/MD
Sample : 04119-03
Misc : 5.08g/5.0mL/MSVOA_Y/SOIL
ALS Vial : 11 Sample Multiplier: 1

Instrument :
MSVOA_Y
ClientSampleId :
RB21153

Quant Method : Z:\voasrv\HPCHEM1\MSVOA_Y\methods\82Y081423S.M
Quant Title : SW846 8260

TIC Library : C:\Database\NIST20.L
TIC Integration Parameters: LSCINT.P

No Library Search Compounds Detected

Data Path : Z:\voasrv\HPCHEM1\MSVOA_Y\Data\VY082423\
Data File : VY015315.D
Acq On : 24 Aug 2023 16:31
Operator : SY/MD
Sample : 04119-03
Misc : 5.08g/5.0mL/MSVOA_Y/SOIL
ALS Vial : 11 Sample Multiplier: 1

Instrument :
MSVOA_Y
ClientSampleId :
RB21153

Quant Method : Z:\voasrv\HPCHEM1\MSVOA_Y\methods\82Y081423S.M
Quant Title : SW846 8260

TIC Library : C:\Database\NIST20.L
TIC Integration Parameters: LSCINT.P

TIC Top Hit name	RT	EstConc	Units	Response	#	RT	Resp	Conc
------------------	----	---------	-------	----------	---	----	------	------
