

Data Path : Z:\voasrv\HPCHEM1\MSVOA_Y\Data\VY082521\
 Data File : VY005834.D
 Acq On : 25 Aug 2021 12:56
 Operator : SY/MD
 Sample : M3521-03
 Misc : 5.01G/5ML/MSVOA_Y/SOIL
 ALS Vial : 7 Sample Multiplier: 1

Instrument :
 MSVOA_Y
 ClientSampleId :
 124027

Integration Parameters: RTEINT.P

Integrator: RTE
 Smoothing : ON Filtering: 5
 Sampling : 1 Min Area: 3 % of largest Peak
 Start Thrs: 0.2 Max Peaks: 100
 Stop Thrs : 0 Peak Location: TOP

If leading or trailing edge < 100 prefer < Baseline drop else tangent >
 Peak separation: 5

Method : Z:\voasrv\HPCHEM1\MSVOA_Y\methods\82Y080221S.M
 Title : SW846 8260

Signal : TIC: VY005834.D\data.ms

peak #	R.T. min	first scan	max scan	last scan	PK TY	peak height	corr. area	corr. % max.	% of total
1	4.729	466	477	491	rBV	29400	89469	8.08%	1.405%
2	5.759	634	646	658	rBV3	9284	29350	2.65%	0.461%
3	7.728	957	969	974	rBV	143741	339056	30.60%	5.324%
4	7.795	974	980	990	rVV	234943	536518	48.42%	8.425%
5	8.149	1029	1038	1050	rBV	149765	327325	29.54%	5.140%
6	8.332	1058	1068	1079	rVB2	20433	52171	4.71%	0.819%
7	8.697	1118	1128	1138	rBV	389383	751637	67.84%	11.803%
8	9.618	1273	1279	1287	rBV2	15362	30368	2.74%	0.477%
9	9.752	1291	1301	1308	rBV	25499	51482	4.65%	0.808%
10	10.118	1354	1361	1365	rBV	11271	19113	1.73%	0.300%
11	10.185	1365	1372	1383	rVB	647574	1107936	100.00%	17.398%
12	10.581	1431	1437	1443	rBV2	8484	16154	1.46%	0.254%
13	11.496	1579	1587	1594	rBV	606609	1005930	90.79%	15.796%
14	12.337	1719	1725	1730	rBV	11237	19374	1.75%	0.304%
15	12.483	1741	1749	1759	rVB	533205	826777	74.62%	12.983%
16	13.428	1897	1904	1911	rBV	630103	988434	89.21%	15.522%
17	14.739	2109	2119	2130	rVB	58296	177014	15.98%	2.780%

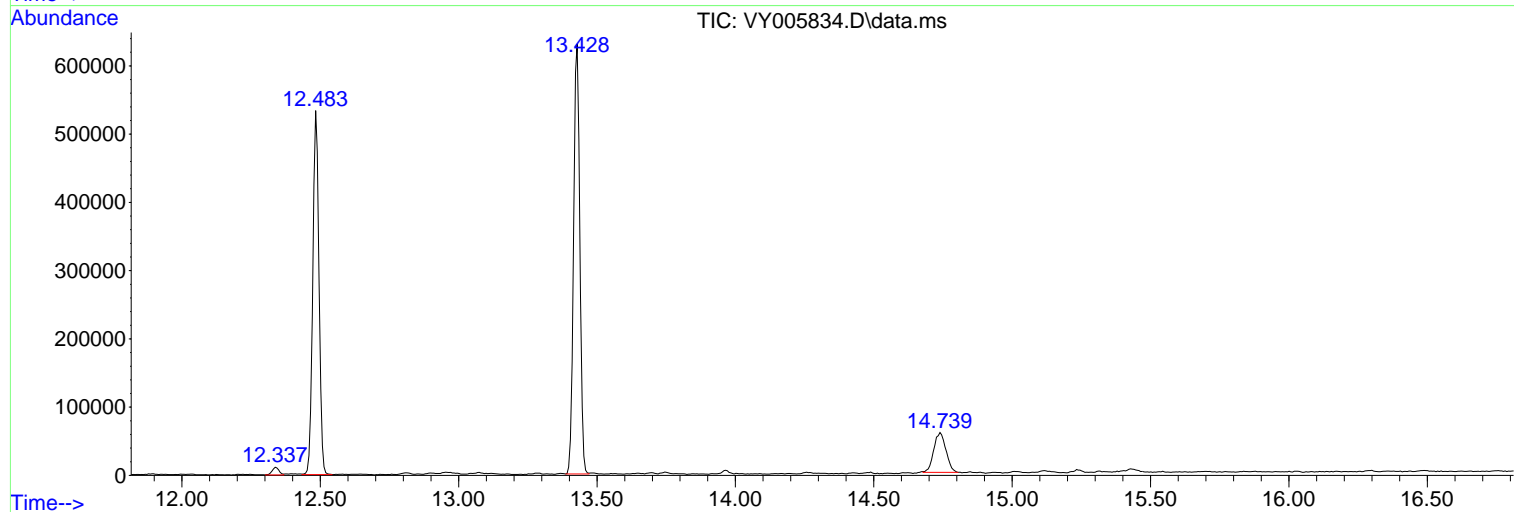
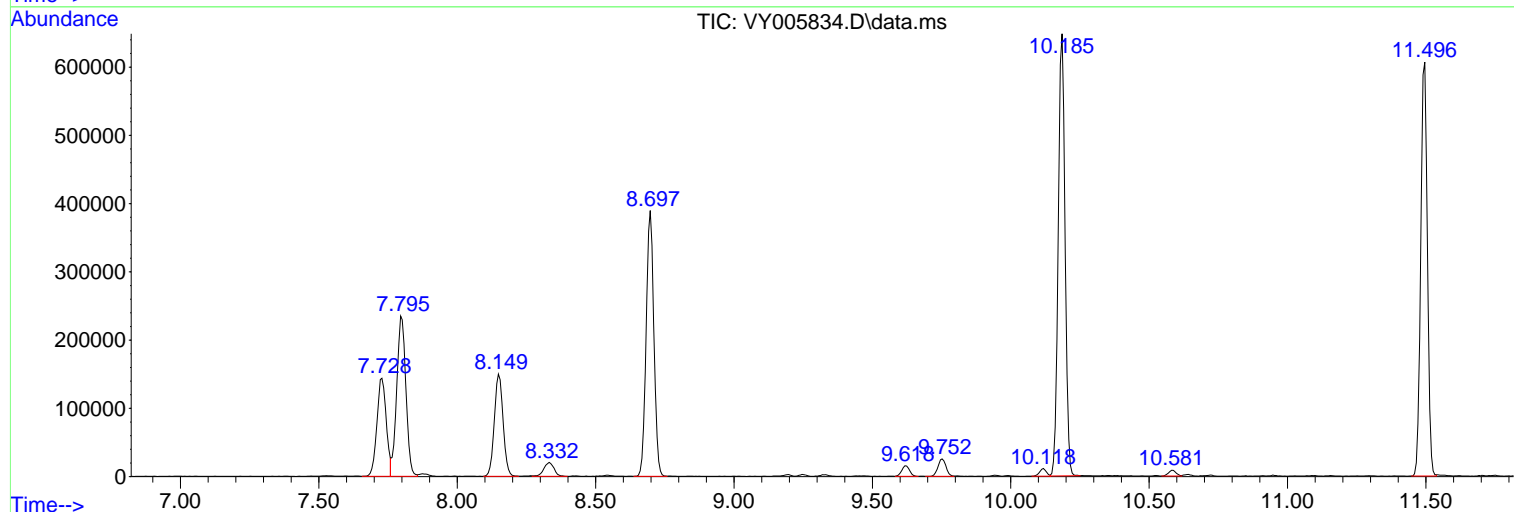
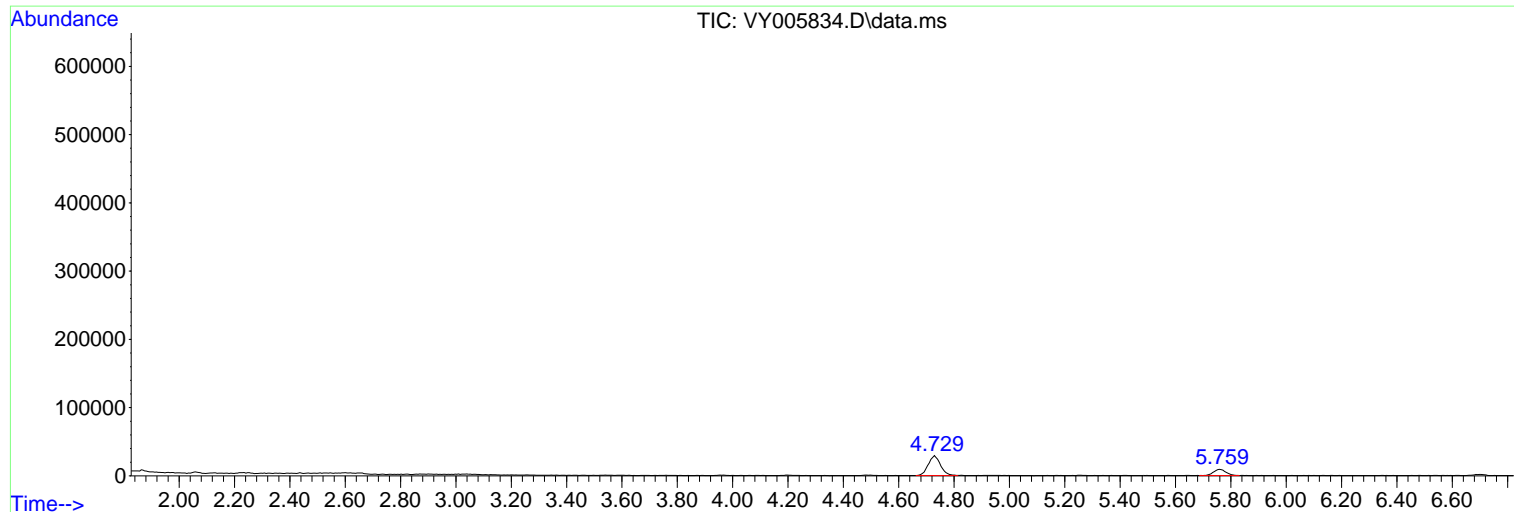
Sum of corrected areas: 6368108

Data Path : Z:\voasrv\HPCHEM1\MSVOA_Y\Data\VY082521\
Data File : VY005834.D
Acq On : 25 Aug 2021 12:56
Operator : SY/MD
Sample : M3521-03
Misc : 5.01G/5ML/MSVOA_Y/SOIL
ALS Vial : 7 Sample Multiplier: 1

Instrument :
MSVOA_Y
ClientSampleId :
124027

Quant Method : Z:\voasrv\HPCHEM1\MSVOA_Y\methods\82Y080221S.M
Quant Title : SW846 8260

TIC Library : C:\Database\NIST20.L
TIC Integration Parameters: LSCINT.P



Library Search Compound Report

Data Path : Z:\voasrv\HPCHEM1\MSVOA_Y\Data\VY082521\
Data File : VY005834.D
Acq On : 25 Aug 2021 12:56
Operator : SY/MD
Sample : M3521-03
Misc : 5.01G/5ML/MSVOA_Y/SOIL
ALS Vial : 7 Sample Multiplier: 1

Instrument :
MSVOA_Y
ClientSampleId :
124027

Quant Method : Z:\voasrv\HPCHEM1\MSVOA_Y\methods\82Y080221S.M
Quant Title : SW846 8260

TIC Library : C:\Database\NIST20.L
TIC Integration Parameters: LSCINT.P

No Library Search Compounds Detected

Data Path : Z:\voasrv\HPCHEM1\MSVOA_Y\Data\VY082521\
Data File : VY005834.D
Acq On : 25 Aug 2021 12:56
Operator : SY/MD
Sample : M3521-03
Misc : 5.01G/5ML/MSVOA_Y/SOIL
ALS Vial : 7 Sample Multiplier: 1

Instrument :
MSVOA_Y
ClientSampleId :
124027

Quant Method : Z:\voasrv\HPCHEM1\MSVOA_Y\methods\82Y080221S.M
Quant Title : SW846 8260

TIC Library : C:\Database\NIST20.L
TIC Integration Parameters: LSCINT.P

TIC Top Hit name	RT	EstConc	Units	Response	--Internal Standard--			
					#	RT	Resp	Conc
