

Data Path : Z:\voasrv\HPCHEM1\MSVOA\_Y\Data\VY083122\  
 Data File : VY010237.D  
 Acq On : 31 Aug 2022 12:00  
 Operator : KP/MD  
 Sample : N4338-01  
 Misc : 5.00g/5.0mL/MSVOA\_Y/SOIL  
 ALS Vial : 8 Sample Multiplier: 1

Instrument :  
 MSVOA\_Y  
 ClientSampleId :  
 YANNUZZI-PLYMOUTH-PROJECT

Integration Parameters: RTEINT.P

Integrator: RTE  
 Smoothing : ON Filtering: 5  
 Sampling : 1 Min Area: 3 % of largest Peak  
 Start Thrs: 0.2 Max Peaks: 100  
 Stop Thrs : 0 Peak Location: TOP

If leading or trailing edge < 100 prefer < Baseline drop else tangent >  
 Peak separation: 5

Method : Z:\voasrv\HPCHEM1\MSVOA\_Y\methods\82Y083022S.M  
 Title : SW846 8260

Signal : TIC: VY010237.D\data.ms

peak #	R.T. min	first scan	max scan	last scan	PK TY	peak height	corr. area	corr. % max.	% of total
1	2.546	111	119	127	rBV	16322	28758	4.55%	0.760%
2	4.704	463	473	487	rBV2	14616	42975	6.81%	1.135%
3	5.734	633	642	652	rVB5	5054	15070	2.39%	0.398%
4	6.972	832	845	861	rBV	23249	72276	11.45%	1.910%
5	7.710	953	966	972	rBV	90439	216745	34.32%	5.726%
6	7.783	972	978	991	rVB	165135	374303	59.27%	9.889%
7	8.130	1022	1035	1048	rBV2	107332	315314	49.93%	8.331%
8	8.685	1117	1126	1138	rBV	241043	471516	74.67%	12.458%
9	10.179	1363	1371	1379	rBV	363824	631471	100.00%	16.684%
10	10.575	1429	1436	1443	rBV3	4662	8265	1.31%	0.218%
11	10.941	1489	1496	1501	rBV3	4371	7777	1.23%	0.205%
12	11.490	1575	1586	1597	rBV	352579	572344	90.64%	15.121%
13	12.483	1742	1749	1757	rBV	286138	462700	73.27%	12.225%
14	13.422	1897	1903	1911	rBV	361331	557245	88.25%	14.723%
15	15.318	2207	2214	2218	rBV	4981	8211	1.30%	0.217%

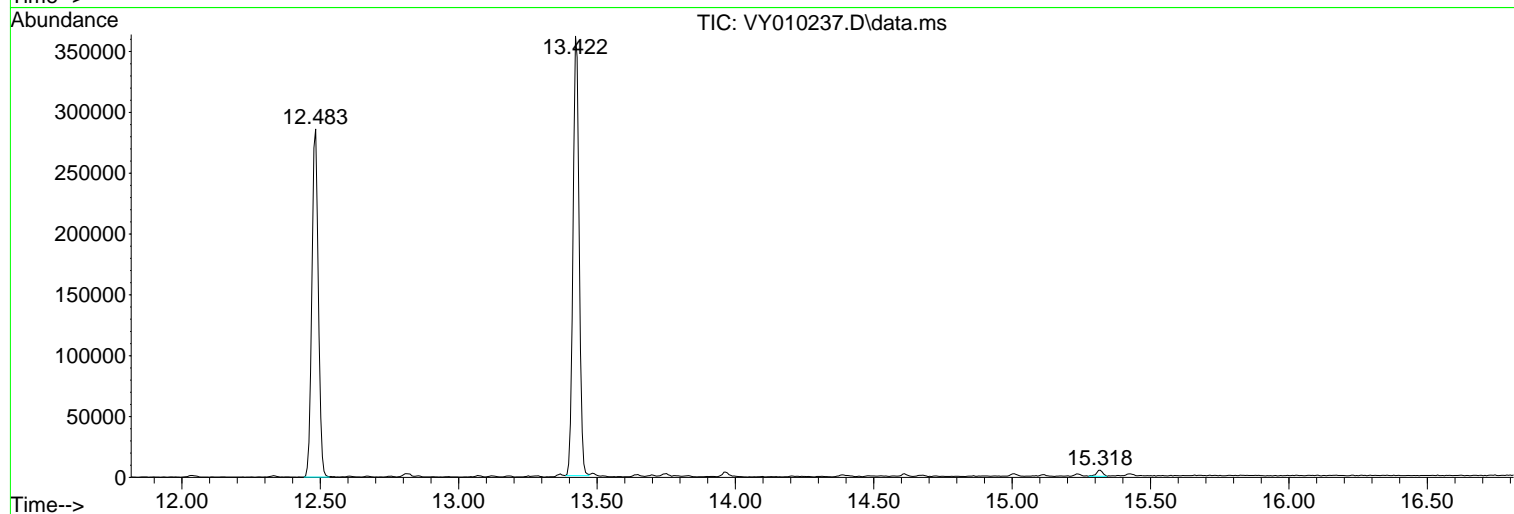
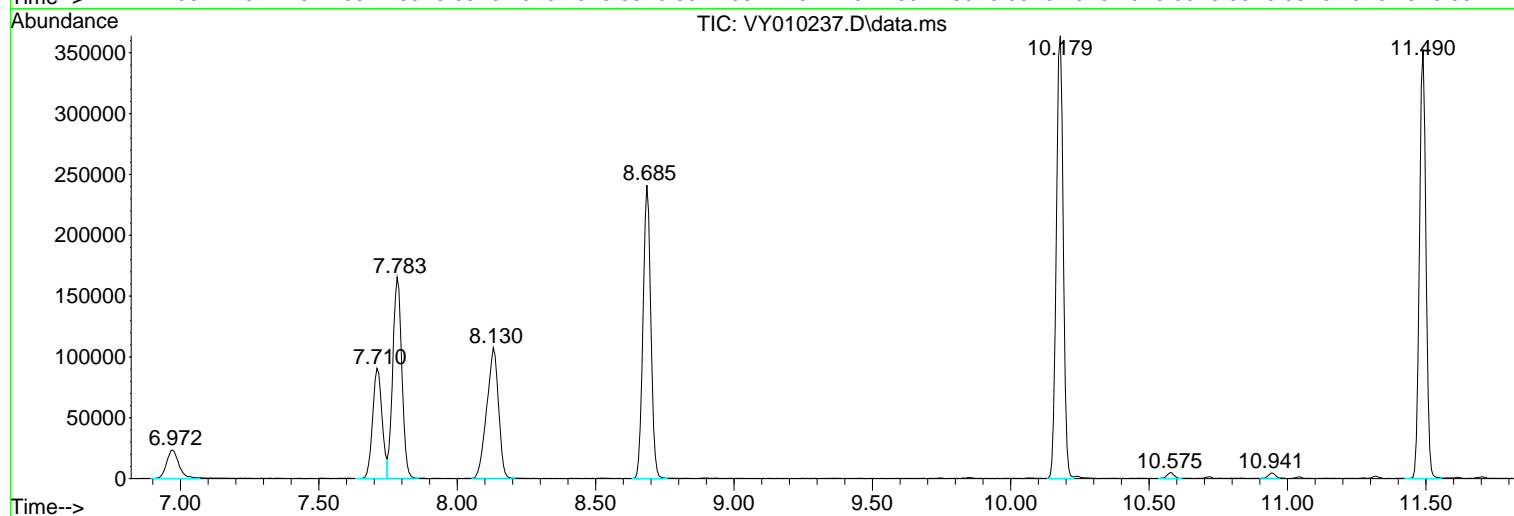
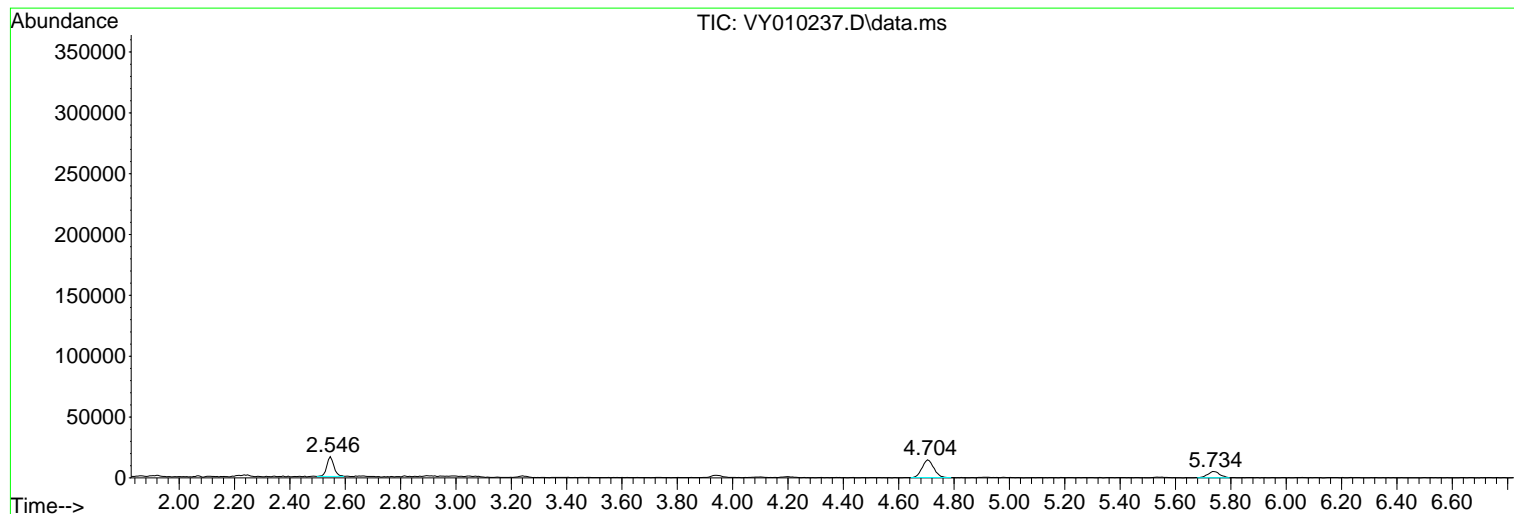
Sum of corrected areas: 3784970

Data Path : Z:\voasrv\HPCHEM1\MSVOA\_Y\Data\VY083122\  
Data File : VY010237.D  
Acq On : 31 Aug 2022 12:00  
Operator : KP/MD  
Sample : N4338-01  
Misc : 5.00g/5.0mL/MSVOA\_Y/SOIL  
ALS Vial : 8 Sample Multiplier: 1

Instrument :  
MSVOA\_Y  
ClientSampleId :  
YANNUZZI-PLYMOUTH-PROJECT

Quant Method : Z:\voasrv\HPCHEM1\MSVOA\_Y\methods\82Y083022S.M  
Quant Title : SW846 8260

TIC Library : C:\Database\NIST20.L  
TIC Integration Parameters: LSCINT.P



Data Path : Z:\voasrv\HPCHEM1\MSVOA\_Y\Data\VY083122\  
 Data File : VY010237.D  
 Acq On : 31 Aug 2022 12:00  
 Operator : KP/MD  
 Sample : N4338-01  
 Misc : 5.00g/5.0mL/MSVOA\_Y/SOIL  
 ALS Vial : 8 Sample Multiplier: 1

Instrument :  
 MSVOA\_Y  
 ClientSampleId :  
 YANNUZZI-PLYMOUTH-PROJECT

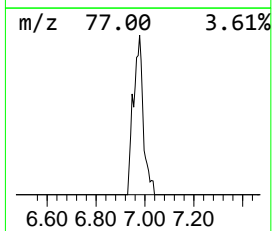
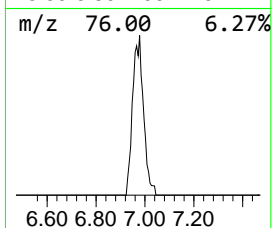
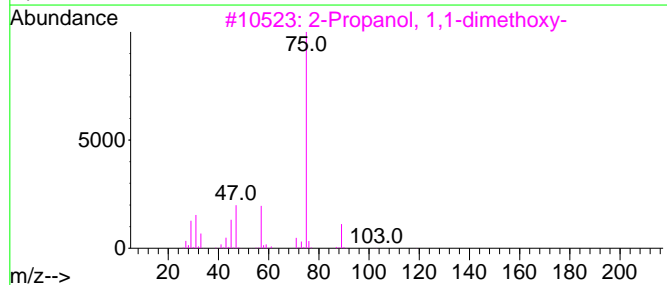
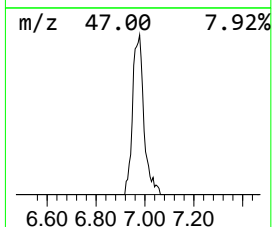
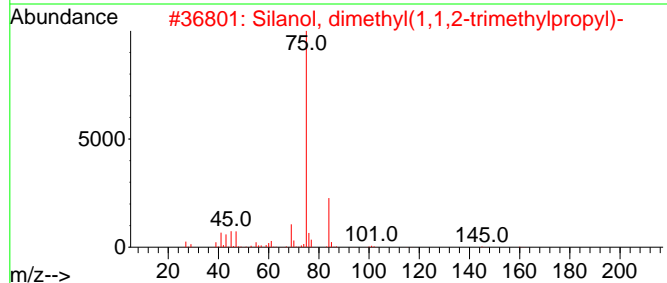
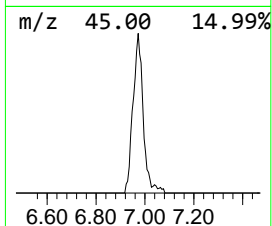
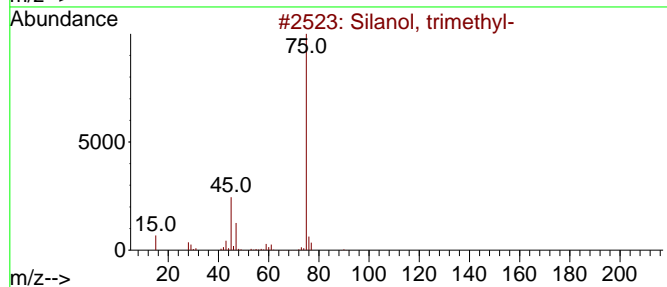
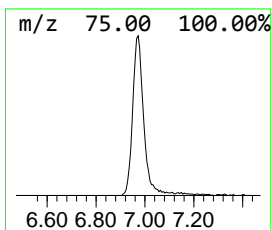
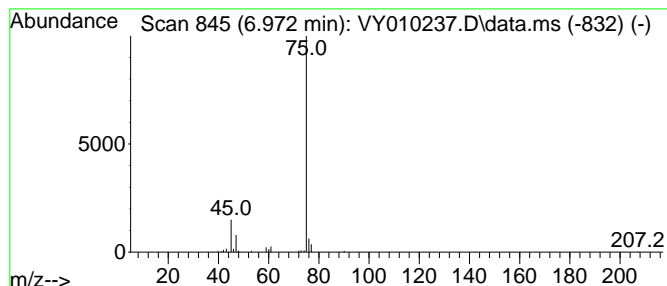
Quant Method : Z:\voasrv\HPCHEM1\MSVOA\_Y\methods\82Y083022S.M  
 Quant Title : SW846 8260

TIC Library : C:\Database\NIST20.L  
 TIC Integration Parameters: LSCINT.P

\*\*\*\*\*  
 Peak Number 1 Silanol, trimethyl- Concentration Rank 1

R.T.	EstConc	Area	Relative to ISTD	R.T.
6.972	9.65 ug/l	72276	Pentafluorobenzene	7.783

Hit#	of	5	Tentative ID	MW	MolForm	CAS#	Qual
1			Silanol, trimethyl-	90	C3H10OSi	001066-40-6	83
2			Silanol, dimethyl(1,1,2-trimethy...	160	C8H20OSi	055644-10-5	64
3			2-Propanol, 1,1-dimethoxy-	120	C5H12O3	042919-42-6	40
4			Ethanethioamide	75	C2H5NS	000062-55-5	39
5			Formamide, N-methylthio	75	C2H5NS	018952-41-5	9



Data Path : Z:\voasrv\HPCHEM1\MSVOA\_Y\Data\VY083122\  
Data File : VY010237.D  
Acq On : 31 Aug 2022 12:00  
Operator : KP/MD  
Sample : N4338-01  
Misc : 5.00g/5.0mL/MSVOA\_Y/SOIL  
ALS Vial : 8 Sample Multiplier: 1

Instrument :  
MSVOA\_Y  
ClientSampleId :  
YANNUZZI-PLYMOUTH-PROJECT

Quant Method : Z:\voasrv\HPCHEM1\MSVOA\_Y\methods\82Y083022S.M  
Quant Title : SW846 8260

TIC Library : C:\Database\NIST0.L  
TIC Integration Parameters: LSCINT.P

TIC Top Hit name	RT	EstConc	Units	Response	--Internal Standard--			
					#	RT	Resp	Conc
-----	-----	-----	-----	-----	-----	-----	-----	-----
Silanol, trimet...	6.972	9.7	ug/l	72276	1	7.783	374303	50.0