

Data Path : Z:\voasrv\HPCHEM1\MSVOA\_Y\Data\VY090123\  
 Data File : VY015410.D  
 Acq On : 01 Sep 2023 13:10  
 Operator : SY/MD  
 Sample : 04256-01  
 Misc : 3.08g/5.0mL/MSVOA\_Y/SOIL  
 ALS Vial : 9 Sample Multiplier: 1

Instrument :  
 MSVOA\_Y  
 ClientSampleId :  
 MW-1

Quant Time: Sep 01 23:30:46 2023  
 Quant Method : Z:\voasrv\HPCHEM1\MSVOA\_Y\methods\82Y082923S.M  
 Quant Title : SW846 8260  
 QLast Update : Thu Aug 31 20:01:47 2023  
 Response via : Initial Calibration

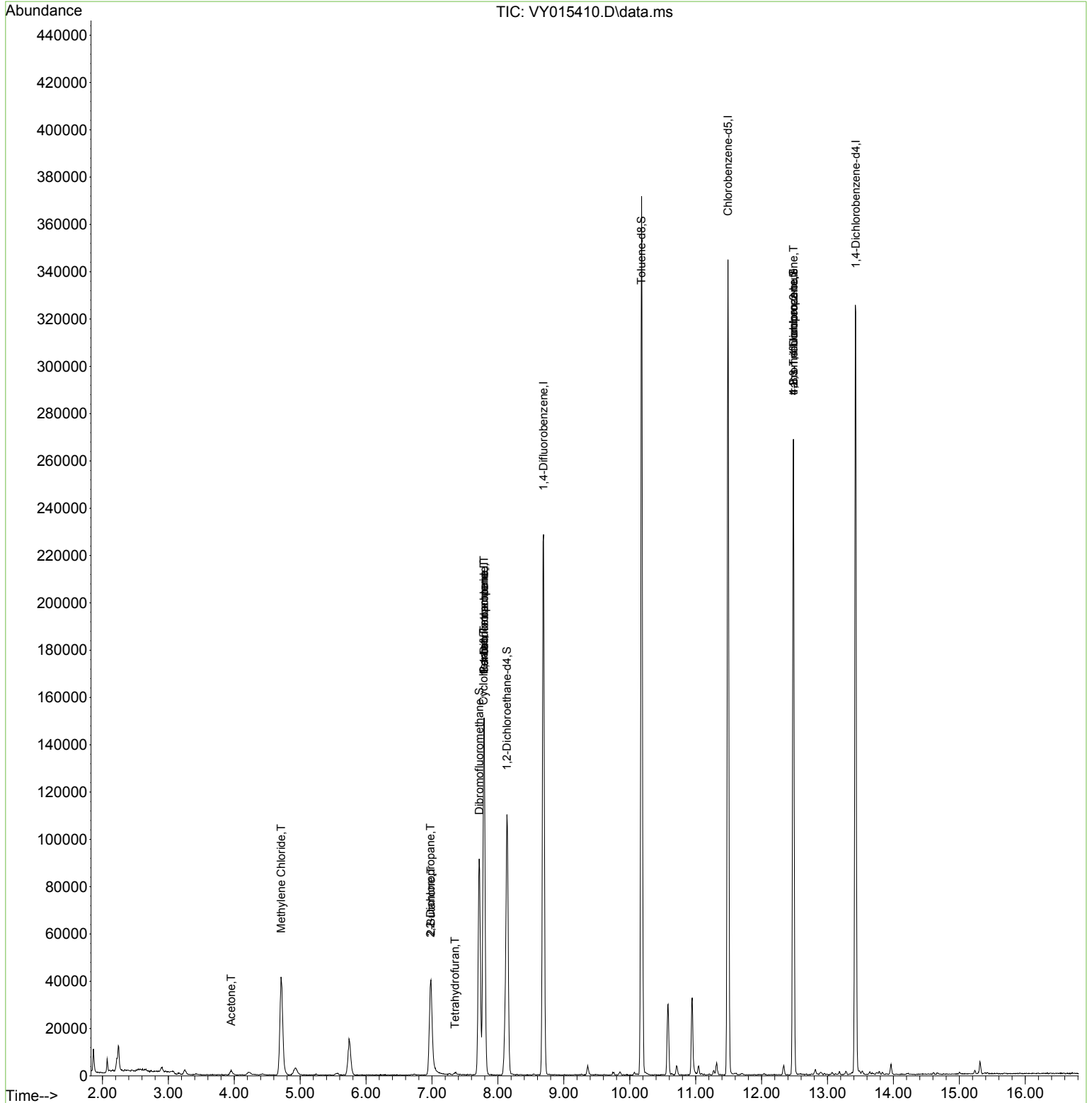
Compound	R.T.	QIon	Response	Conc	Units	Dev(Min)
-----						
Internal Standards						
1) Pentafluorobenzene	7.789	168	117472	50.000	ug/l	0.00
34) 1,4-Difluorobenzene	8.691	114	199322	50.000	ug/l	0.00
63) Chlorobenzene-d5	11.490	117	180433	50.000	ug/l	0.00
72) 1,4-Dichlorobenzene-d4	13.428	152	85042	50.000	ug/l	0.00
System Monitoring Compounds						
33) 1,2-Dichloroethane-d4	8.137	65	78488	62.328	ug/l	0.00
Spiked Amount	50.000	Range	50 - 163	Recovery	=	124.660%
35) Dibromofluoromethane	7.716	113	63646	55.438	ug/l	0.00
Spiked Amount	50.000	Range	54 - 147	Recovery	=	110.880%
50) Toluene-d8	10.179	98	236020	56.769	ug/l	0.00
Spiked Amount	50.000	Range	58 - 134	Recovery	=	113.540%
62) 4-Bromofluorobenzene	12.483	95	76426	49.517	ug/l	0.00
Spiked Amount	50.000	Range	30 - 143	Recovery	=	99.040%
Target Compounds						
					Qvalue	
11) Tert butyl alcohol	4.930	59	3832	Below Cal	#	93
16) Acetone	3.954	43	3441	6.547	ug/l #	85
20) Methylene Chloride	4.710	84	30452	13.174	ug/l	93
25) 2-Butanone	6.984	43	3974	5.331	ug/l #	86
26) 2,2-Dichloropropane	6.978	77	3010	1.508	ug/l #	54
29) Tetrahydrofuran	7.350	42	512	1.094	ug/l #	89
31) Cyclohexane	7.783	56	2534	1.133	ug/l #	30
36) 1,1-Dichloropropene	7.789	75	9609	4.767	ug/l #	49
38) Carbon Tetrachloride	7.789	117	11899	5.715	ug/l #	16
76) 1,2,3-Trichloropropane	12.483	75	42042	37.280	ug/l #	100
81) trans-1,4-Dichloro-2-b...	12.483	75	42042	82.235	ug/l #	10
-----						

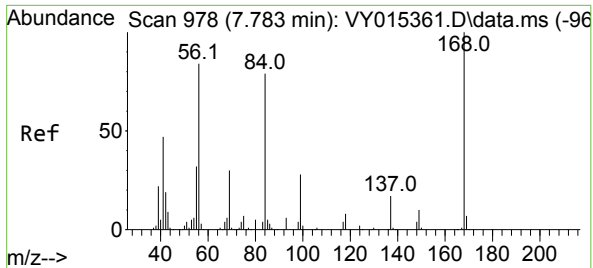
(#) = qualifier out of range (m) = manual integration (+) = signals summed

Data Path : Z:\voasrv\HPCHEM1\MSVOA\_Y\Data\VY090123\  
 Data File : VY015410.D  
 Acq On : 01 Sep 2023 13:10  
 Operator : SY/MD  
 Sample : 04256-01  
 Misc : 3.08g/5.0mL/MSVOA\_Y/SOIL  
 ALS Vial : 9 Sample Multiplier: 1

Instrument :  
 MSVOA\_Y  
 ClientSampleId :  
 MW-1

Quant Time: Sep 01 23:30:46 2023  
 Quant Method : Z:\voasrv\HPCHEM1\MSVOA\_Y\methods\82Y082923S.M  
 Quant Title : SW846 8260  
 QLast Update : Thu Aug 31 20:01:47 2023  
 Response via : Initial Calibration

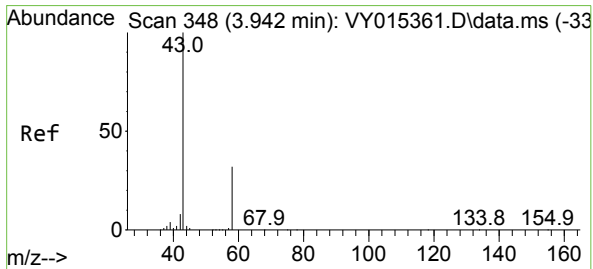
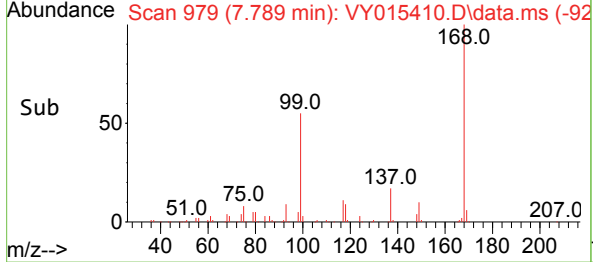
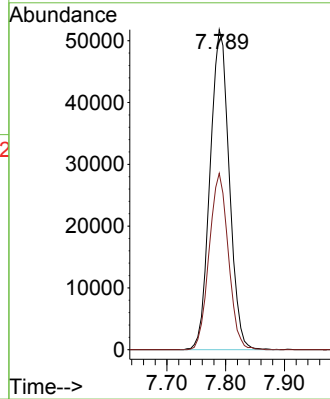
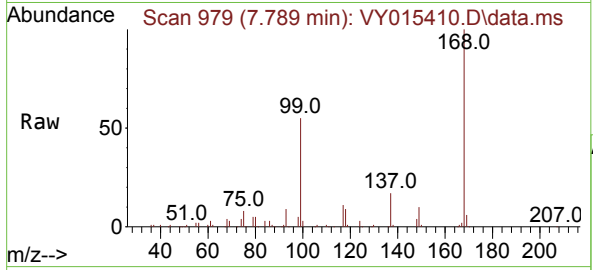




#1  
 Pentafluorobenzene  
 Concen: 50.000 ug/l  
 RT: 7.789 min Scan# 91  
 Delta R.T. 0.006 min  
 Lab File: VY015410.D  
 Acq: 01 Sep 2023 13:10

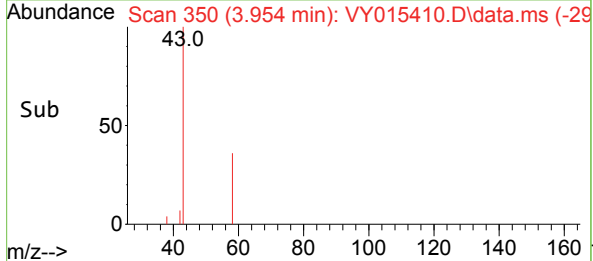
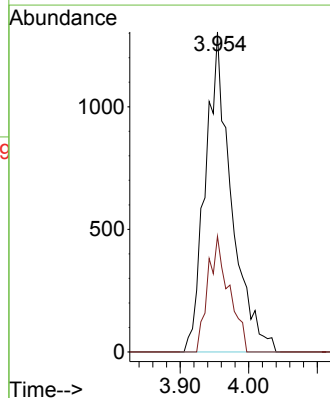
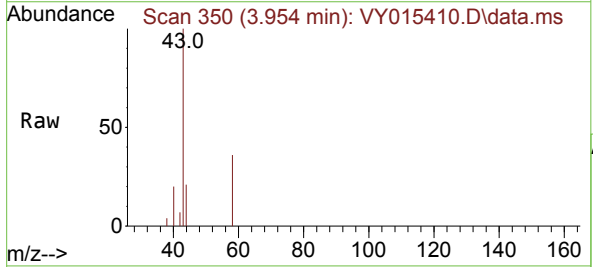
Instrument :  
 MSVOA\_Y  
 ClientSampleId :  
 MW-1

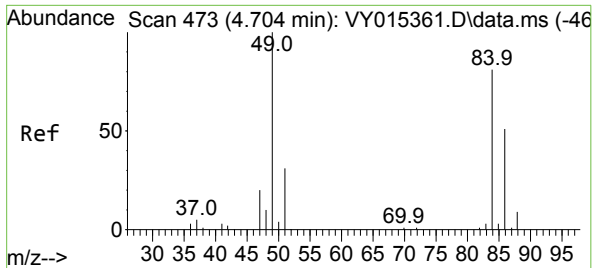
Tgt Ion:168 Resp: 117472  
 Ion Ratio Lower Upper  
 168 100  
 99 55.1 43.4 65.0



#16  
 Acetone  
 Concen: 6.547 ug/l  
 RT: 3.954 min Scan# 350  
 Delta R.T. 0.012 min  
 Lab File: VY015410.D  
 Acq: 01 Sep 2023 13:10

Tgt Ion: 43 Resp: 3441  
 Ion Ratio Lower Upper  
 43 100  
 58 36.2 22.7 34.1#



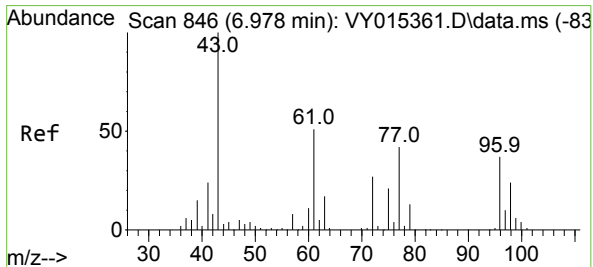
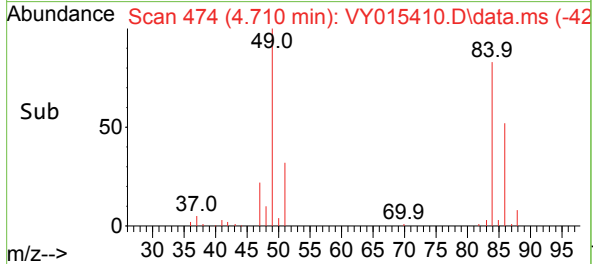
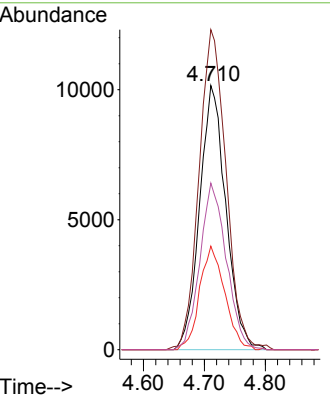
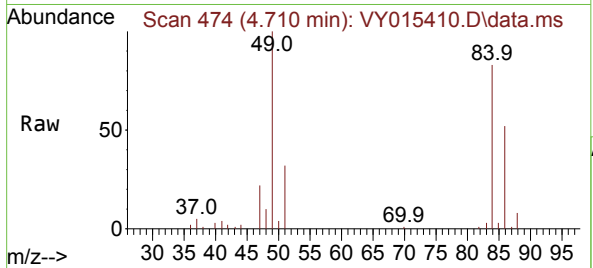


#20  
 Methylene Chloride  
 Concen: 13.174 ug/l  
 RT: 4.710 min Scan# 41  
 Delta R.T. 0.006 min  
 Lab File: VY015410.D  
 Acq: 01 Sep 2023 13:10

Instrument : MSVOA\_Y  
 ClientSampleId : MW-1

Tgt Ion: 84 Resp: 30452

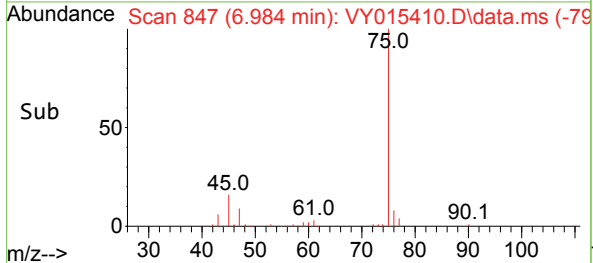
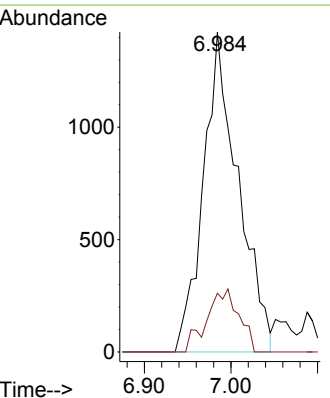
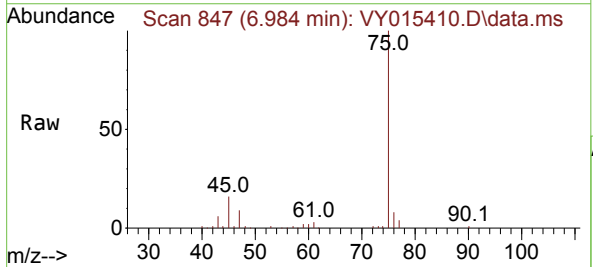
Ion	Ratio	Lower	Upper
84	100		
49	120.5	106.9	160.3
51	39.2	33.2	49.8
86	63.0	51.0	76.6

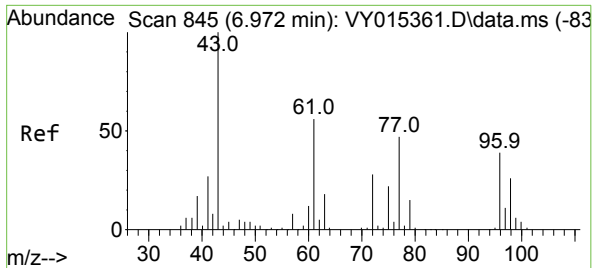


#25  
 2-Butanone  
 Concen: 5.331 ug/l  
 RT: 6.984 min Scan# 847  
 Delta R.T. 0.006 min  
 Lab File: VY015410.D  
 Acq: 01 Sep 2023 13:10

Tgt Ion: 43 Resp: 3974

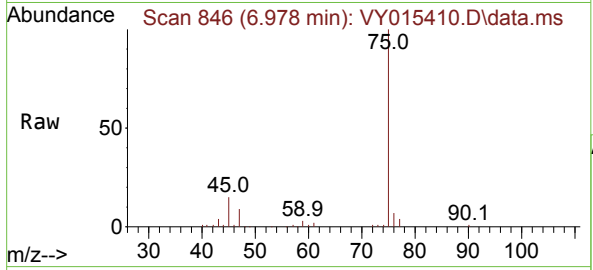
Ion	Ratio	Lower	Upper
43	100		
72	18.3	20.5	30.7#



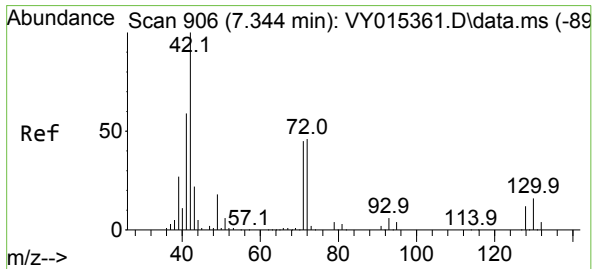
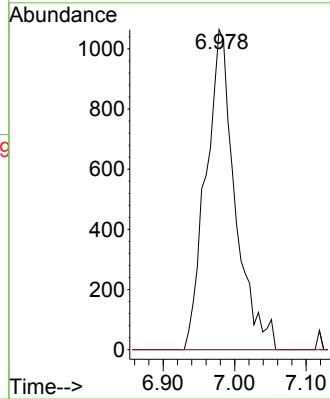
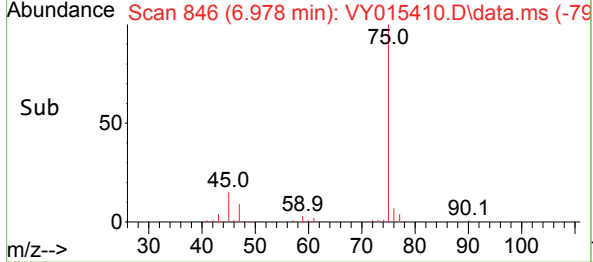


#26  
 2,2-Dichloropropane  
 Concen: 1.508 ug/l  
 RT: 6.978 min Scan# 846  
 Delta R.T. 0.006 min  
 Lab File: VY015410.D  
 Acq: 01 Sep 2023 13:10

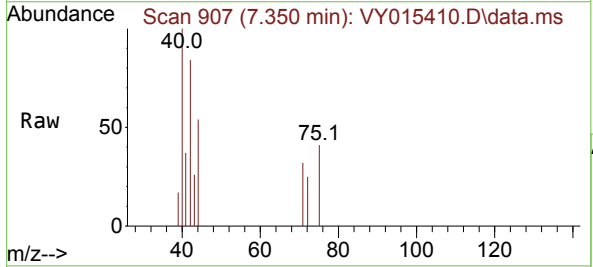
Instrument : MSVOA\_Y  
 ClientSampleId : MW-1



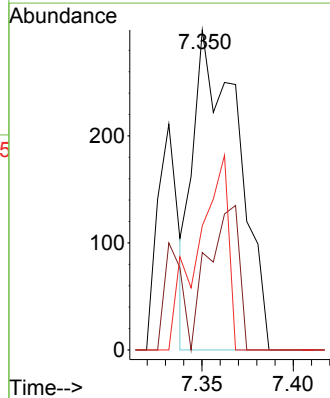
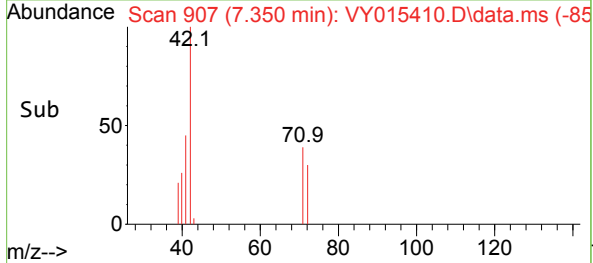
Tgt Ion: 77 Resp: 3010  
 Ion Ratio Lower Upper  
 77 100  
 97 0.0 10.9 32.9#

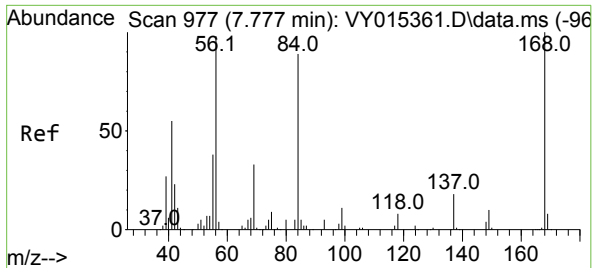


#29  
 Tetrahydrofuran  
 Concen: 1.094 ug/l  
 RT: 7.350 min Scan# 907  
 Delta R.T. 0.006 min  
 Lab File: VY015410.D  
 Acq: 01 Sep 2023 13:10



Tgt Ion: 42 Resp: 512  
 Ion Ratio Lower Upper  
 42 100  
 72 31.1 32.8 49.2#  
 71 41.8 31.0 46.4

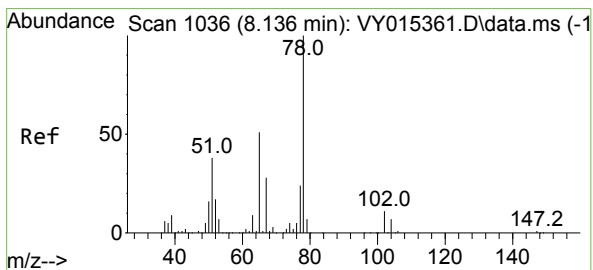
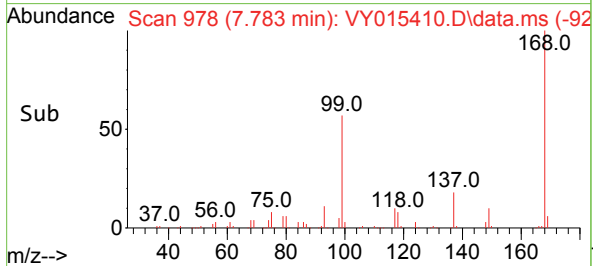
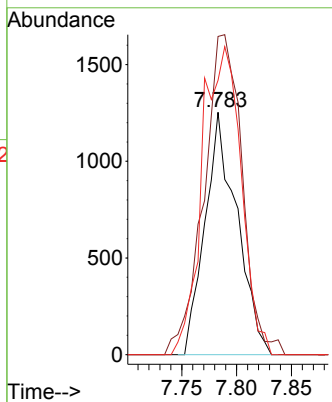
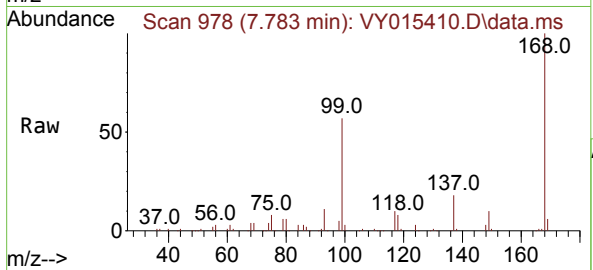




#31  
 Cyclohexane  
 Concen: 1.133 ug/l  
 RT: 7.783 min Scan# 91  
 Delta R.T. 0.000 min  
 Lab File: VY015410.D  
 Acq: 01 Sep 2023 13:10

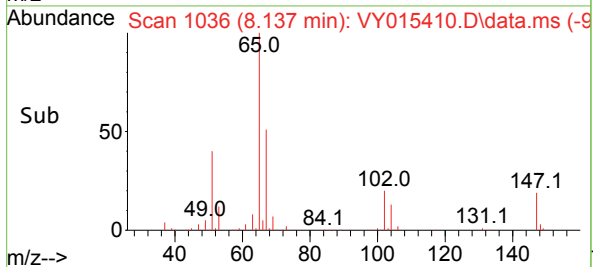
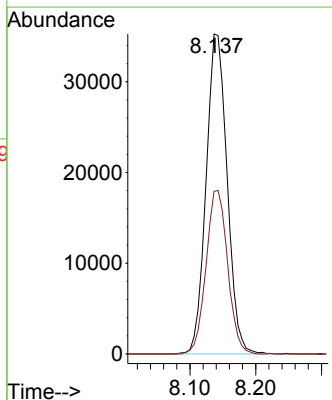
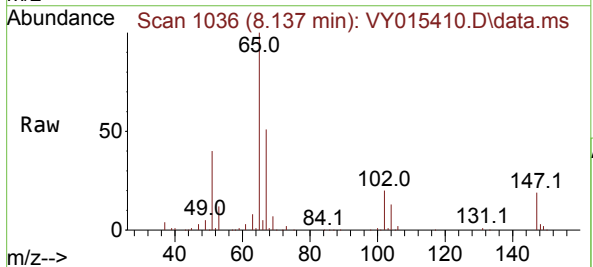
Instrument :  
 MSVOA\_Y  
 ClientSampleId :  
 MW-1

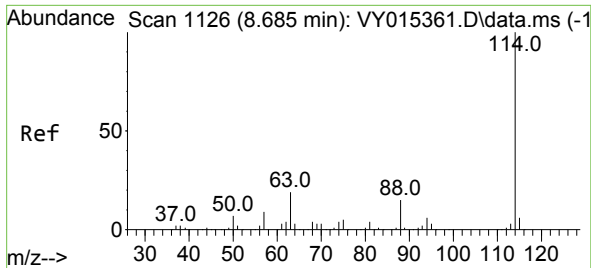
Tgt Ion: 56 Resp: 2534  
 Ion Ratio Lower Upper  
 56 100  
 69 125.1 27.8 41.6#  
 84 113.2 66.4 99.6#



#33  
 1,2-Dichloroethane-d4  
 Concen: 62.328 ug/l  
 RT: 8.137 min Scan# 1036  
 Delta R.T. 0.000 min  
 Lab File: VY015410.D  
 Acq: 01 Sep 2023 13:10

Tgt Ion: 65 Resp: 78488  
 Ion Ratio Lower Upper  
 65 100  
 67 52.6 0.0 101.8

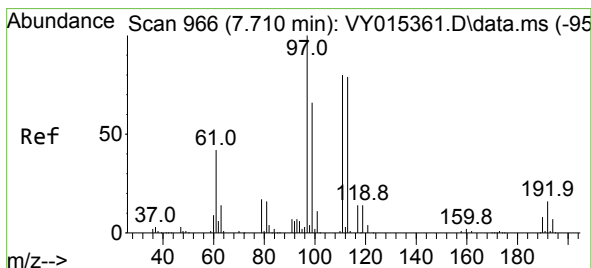
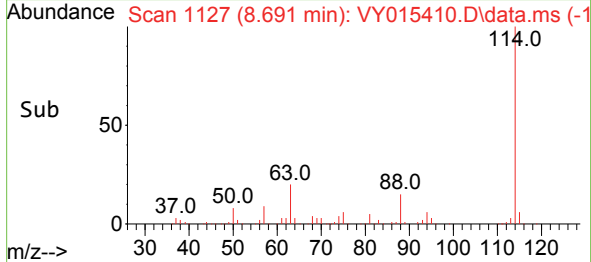
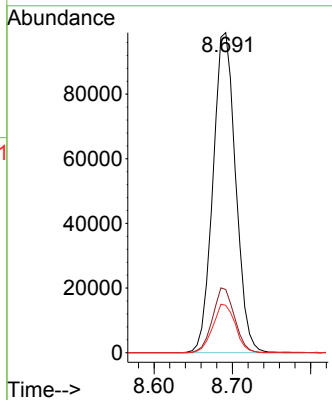
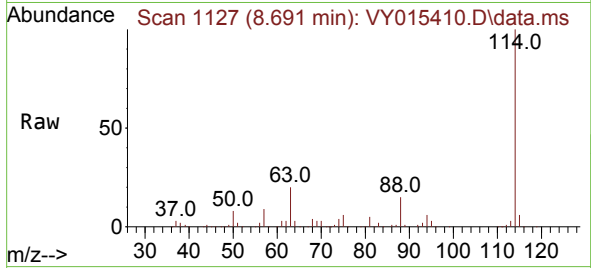




#34  
 1,4-Difluorobenzene  
 Concen: 50.000 ug/l  
 RT: 8.691 min Scan# 1127  
 Delta R.T. 0.006 min  
 Lab File: VY015410.D  
 Acq: 01 Sep 2023 13:10

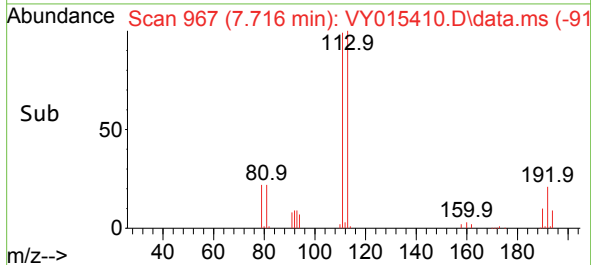
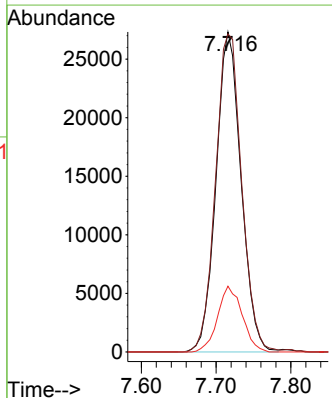
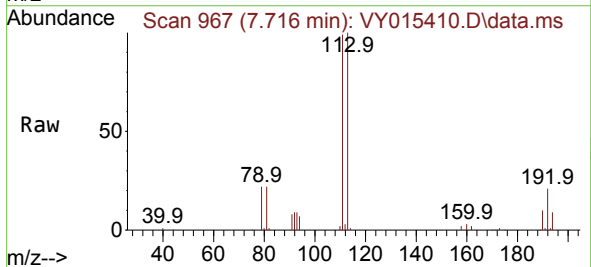
Instrument :  
 MSVOA\_Y  
 ClientSampleId :  
 MW-1

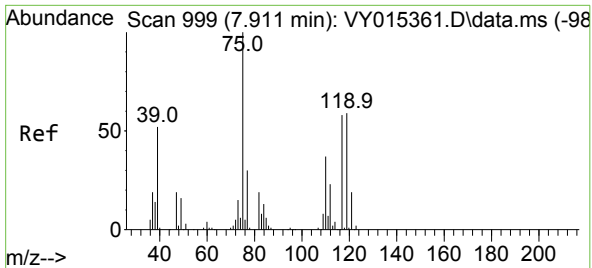
Tgt Ion:114 Resp: 199322  
 Ion Ratio Lower Upper  
 114 100  
 63 19.7 0.0 42.4  
 88 14.8 0.0 30.6



#35  
 Dibromofluoromethane  
 Concen: 55.438 ug/l  
 RT: 7.716 min Scan# 967  
 Delta R.T. 0.000 min  
 Lab File: VY015410.D  
 Acq: 01 Sep 2023 13:10

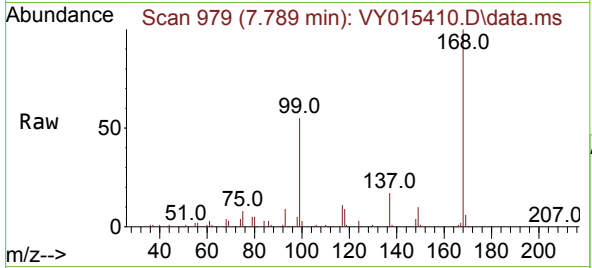
Tgt Ion:113 Resp: 63646  
 Ion Ratio Lower Upper  
 113 100  
 111 103.7 81.3 121.9  
 192 20.2 16.9 25.3



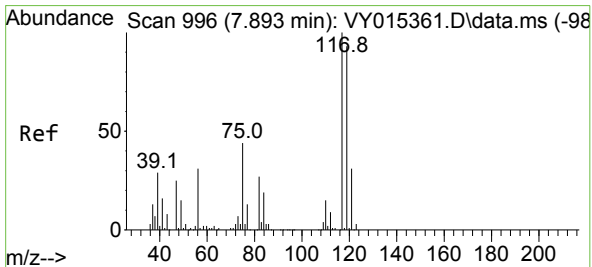
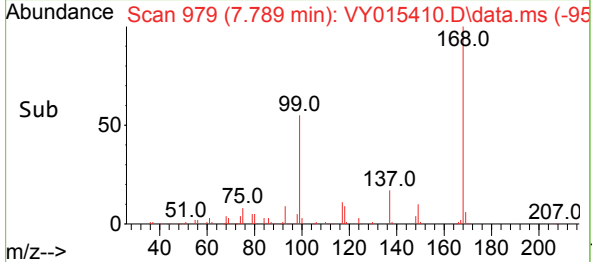
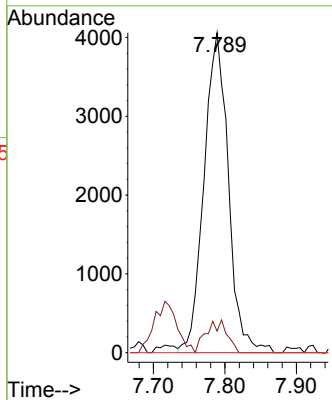


#36  
 1,1-Dichloropropene  
 Concen: 4.767 ug/l  
 RT: 7.789 min Scan# 919  
 Delta R.T. -0.122 min  
 Lab File: VY015410.D  
 Acq: 01 Sep 2023 13:10

Instrument : MSVOA\_Y  
 ClientSampleId : MW-1

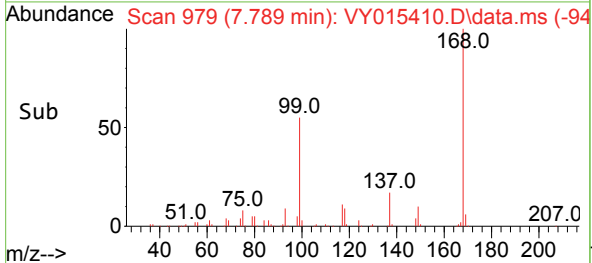
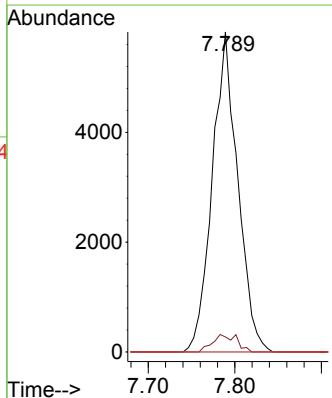
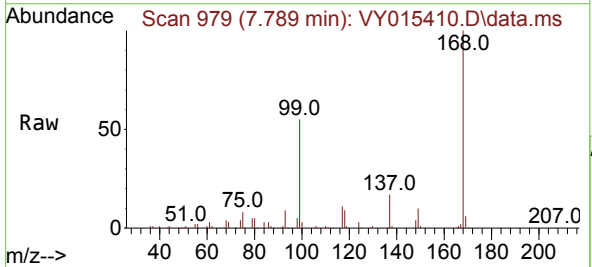


Tgt Ion	Resp	Lower	Upper
75	100		
110	8.6	17.8	53.5#
77	0.0	24.4	36.6#

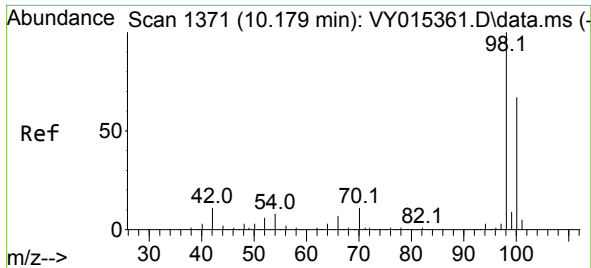


#38  
 Carbon Tetrachloride  
 Concen: 5.715 ug/l  
 RT: 7.789 min Scan# 979  
 Delta R.T. -0.103 min  
 Lab File: VY015410.D  
 Acq: 01 Sep 2023 13:10

Tgt Ion	Resp	Lower	Upper
117	100		
119	4.7	76.4	114.6#
121	0.0	25.8	38.6#



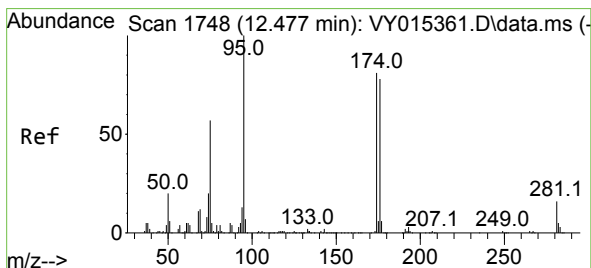
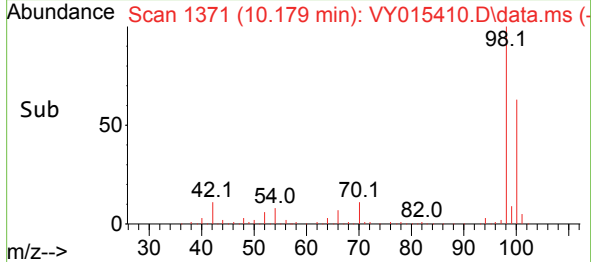
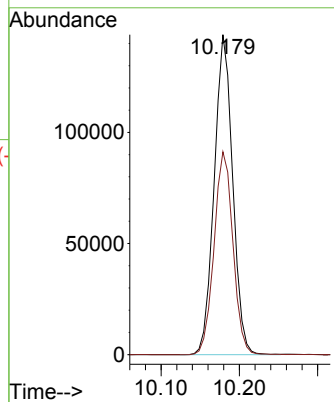
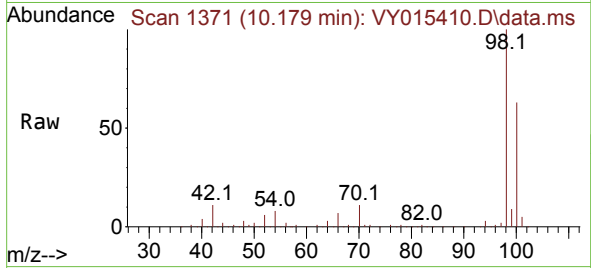




#50  
 Toluene-d8  
 Concen: 56.769 ug/l  
 RT: 10.179 min Scan# 11  
 Delta R.T. 0.000 min  
 Lab File: VY015410.D  
 Acq: 01 Sep 2023 13:10

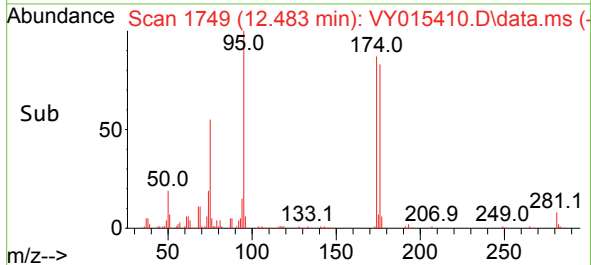
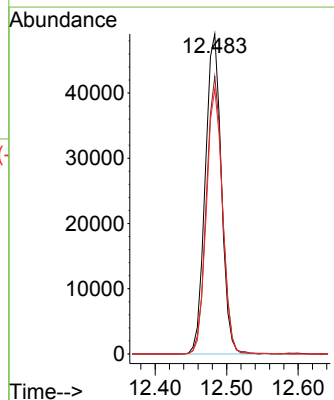
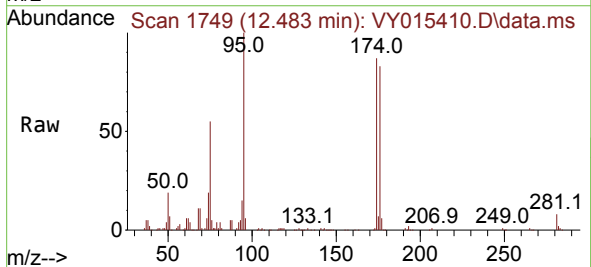
Instrument :  
 MSVOA\_Y  
 ClientSampleId :  
 MW-1

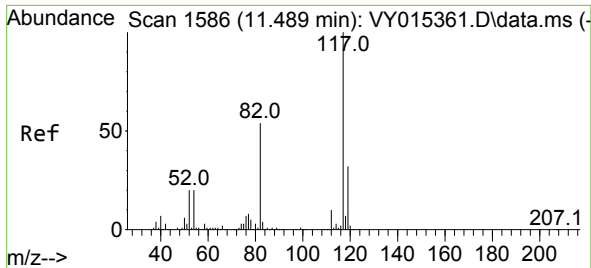
Tgt Ion: 98 Resp: 236020  
 Ion Ratio Lower Upper  
 98 100  
 100 64.9 50.1 75.1



#62  
 4-Bromofluorobenzene  
 Concen: 49.517 ug/l  
 RT: 12.483 min Scan# 1749  
 Delta R.T. 0.006 min  
 Lab File: VY015410.D  
 Acq: 01 Sep 2023 13:10

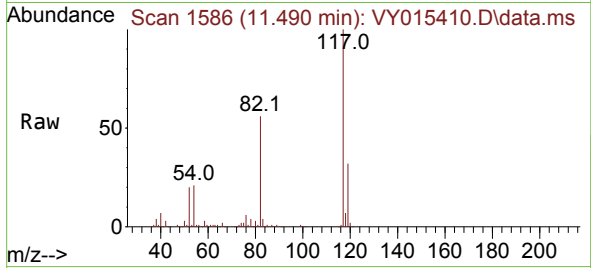
Tgt Ion: 95 Resp: 76426  
 Ion Ratio Lower Upper  
 95 100  
 174 86.9 0.0 178.2  
 176 83.3 0.0 173.8



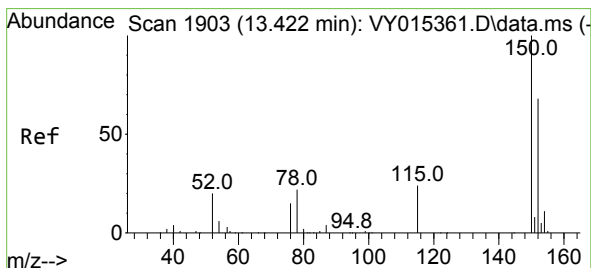
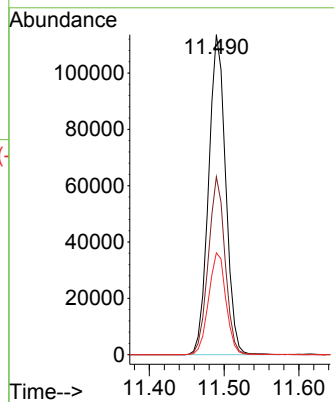
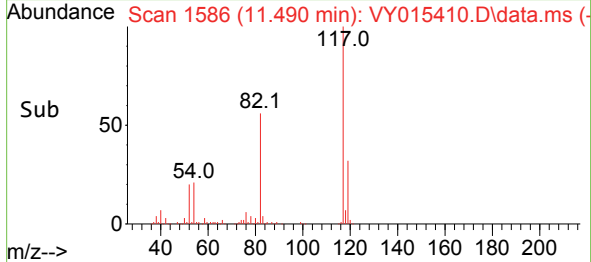


#63  
 Chlorobenzene-d5  
 Concen: 50.000 ug/l  
 RT: 11.490 min Scan# 11  
 Delta R.T. 0.000 min  
 Lab File: VY015410.D  
 Acq: 01 Sep 2023 13:10

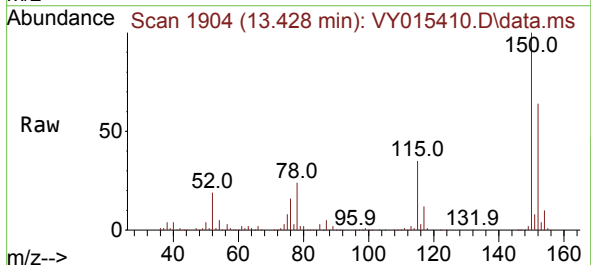
Instrument : MSVOA\_Y  
 ClientSampleId : MW-1



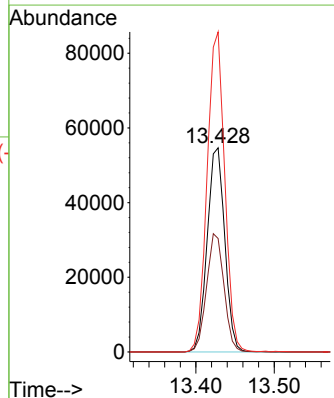
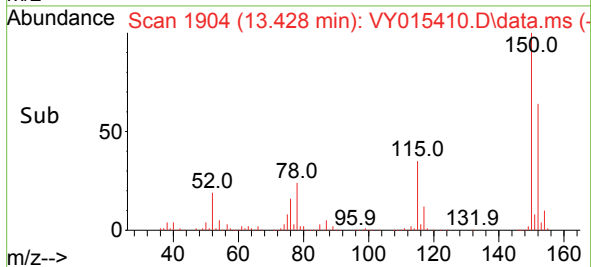
Tgt Ion:117 Resp: 180433  
 Ion Ratio Lower Upper  
 117 100  
 82 55.6 43.4 65.0  
 119 31.8 26.3 39.5

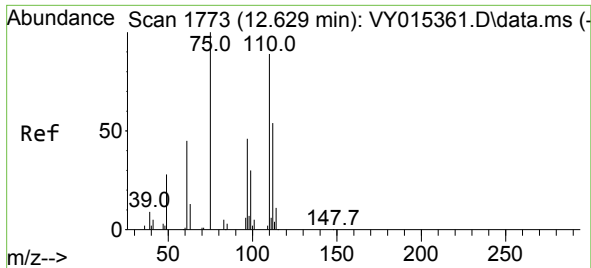


#72  
 1,4-Dichlorobenzene-d4  
 Concen: 50.000 ug/l  
 RT: 13.428 min Scan# 1904  
 Delta R.T. 0.006 min  
 Lab File: VY015410.D  
 Acq: 01 Sep 2023 13:10



Tgt Ion:152 Resp: 85042  
 Ion Ratio Lower Upper  
 152 100  
 115 57.5 28.8 86.5  
 150 156.8 0.0 348.8

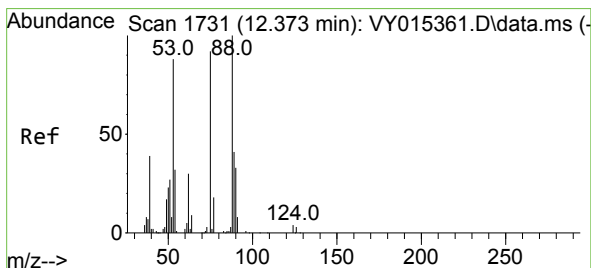
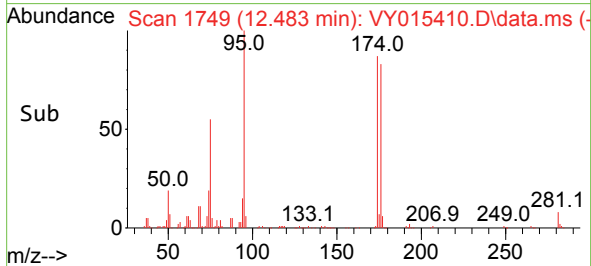
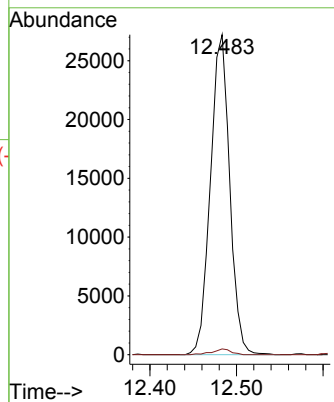
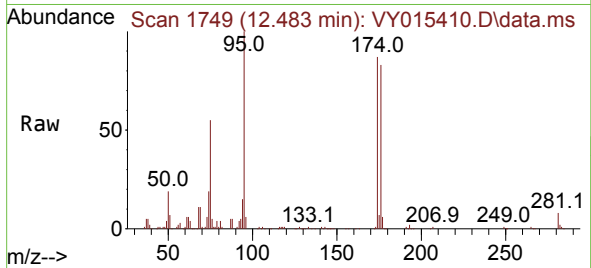




#76  
 1,2,3-Trichloropropane  
 Concen: 37.280 ug/l  
 RT: 12.483 min Scan# 1749  
 Delta R.T. -0.146 min  
 Lab File: VY015410.D  
 Acq: 01 Sep 2023 13:10

Instrument : MSVOA\_Y  
 ClientSampleId : MW-1

Tgt Ion: 75 Resp: 42042  
 Ion Ratio Lower Upper  
 75 100  
 77 1.7 0.0 0.0#



#81  
 trans-1,4-Dichloro-2-butene  
 Concen: 82.235 ug/l  
 RT: 12.483 min Scan# 1749  
 Delta R.T. 0.104 min  
 Lab File: VY015410.D  
 Acq: 01 Sep 2023 13:10

Tgt Ion: 75 Resp: 42042  
 Ion Ratio Lower Upper  
 75 100  
 53 0.0 77.8 116.8#  
 89 0.0 37.4 56.0#

