

Data Path : Z:\voasrv\HPCHEM1\MSVOA\_Y\Data\VY090123\  
 Data File : VY015411.D  
 Acq On : 01 Sep 2023 13:33  
 Operator : SY/MD  
 Sample : 04256-03  
 Misc : 5.57g/5.0mL/MSVOA\_Y/SOIL  
 ALS Vial : 10 Sample Multiplier: 1

**Instrument :**  
 MSVOA\_Y  
**ClientSampleId :**  
 MW-2

Quant Time: Sep 01 23:31:08 2023  
 Quant Method : Z:\voasrv\HPCHEM1\MSVOA\_Y\methods\82Y082923S.M  
 Quant Title : SW846 8260  
 QLast Update : Thu Aug 31 20:01:47 2023  
 Response via : Initial Calibration

**Manual Integrations**  
**APPROVED**  
 Reviewed By :Semsettin Yesilyurt 09/04/2023  
 Supervised By :Mahesh Dadoda 09/05/2023

Compound	R.T.	QIon	Response	Conc	Units	Dev(Min)
<b>Internal Standards</b>						
1) Pentafluorobenzene	7.789	168	128588	50.000	ug/l	0.00
34) 1,4-Difluorobenzene	8.685	114	212393	50.000	ug/l	0.00
63) Chlorobenzene-d5	11.489	117	203462	50.000	ug/l	0.00
72) 1,4-Dichlorobenzene-d4	13.422	152	109136	50.000	ug/l	0.00
<b>System Monitoring Compounds</b>						
33) 1,2-Dichloroethane-d4	8.136	65	78872	57.218	ug/l	0.00
Spiked Amount	50.000	Range 50 - 163	Recovery	=	114.440%	
35) Dibromofluoromethane	7.716	113	65873	53.847	ug/l	0.00
Spiked Amount	50.000	Range 54 - 147	Recovery	=	107.700%	
50) Toluene-d8	10.179	98	366094	82.637	ug/l	0.00
Spiked Amount	50.000	Range 58 - 134	Recovery	=	165.280%#	
62) 4-Bromofluorobenzene	12.477	95	132459	80.540	ug/l	0.00
Spiked Amount	50.000	Range 30 - 143	Recovery	=	161.080%#	
<b>Target Compounds</b>						
						Qvalue
16) Acetone	3.948	43	8976	15.601	ug/l	95
20) Methylene Chloride	4.710	84	24545	7.927	ug/l	97
31) Cyclohexane	7.777	56	278593	113.777	ug/l #	88
39) Methylcyclohexane	9.185	83	1448462	535.619	ug/l	95
67) Ethyl Benzene	11.593	91	20510	2.605	ug/l	98
68) m/p-Xylenes	11.709	106	26706	8.752	ug/l	88
73) Isopropylbenzene	12.325	105	36056	4.398	ug/l	97
78) n-propylbenzene	12.672	91	65362	6.589	ug/l	97
80) 1,3,5-Trimethylbenzene	12.812	105	453106	66.082	ug/l	98
83) tert-Butylbenzene	13.074	119	14483m	2.412	ug/l	
84) 1,2,4-Trimethylbenzene	13.117	105	70194	10.311	ug/l	100
85) sec-Butylbenzene	13.251	105	61547	6.871	ug/l #	44
86) p-Isopropyltoluene	13.367	119	170006	22.645	ug/l	98
89) n-Butylbenzene	13.696	91	104305	14.761	ug/l #	66

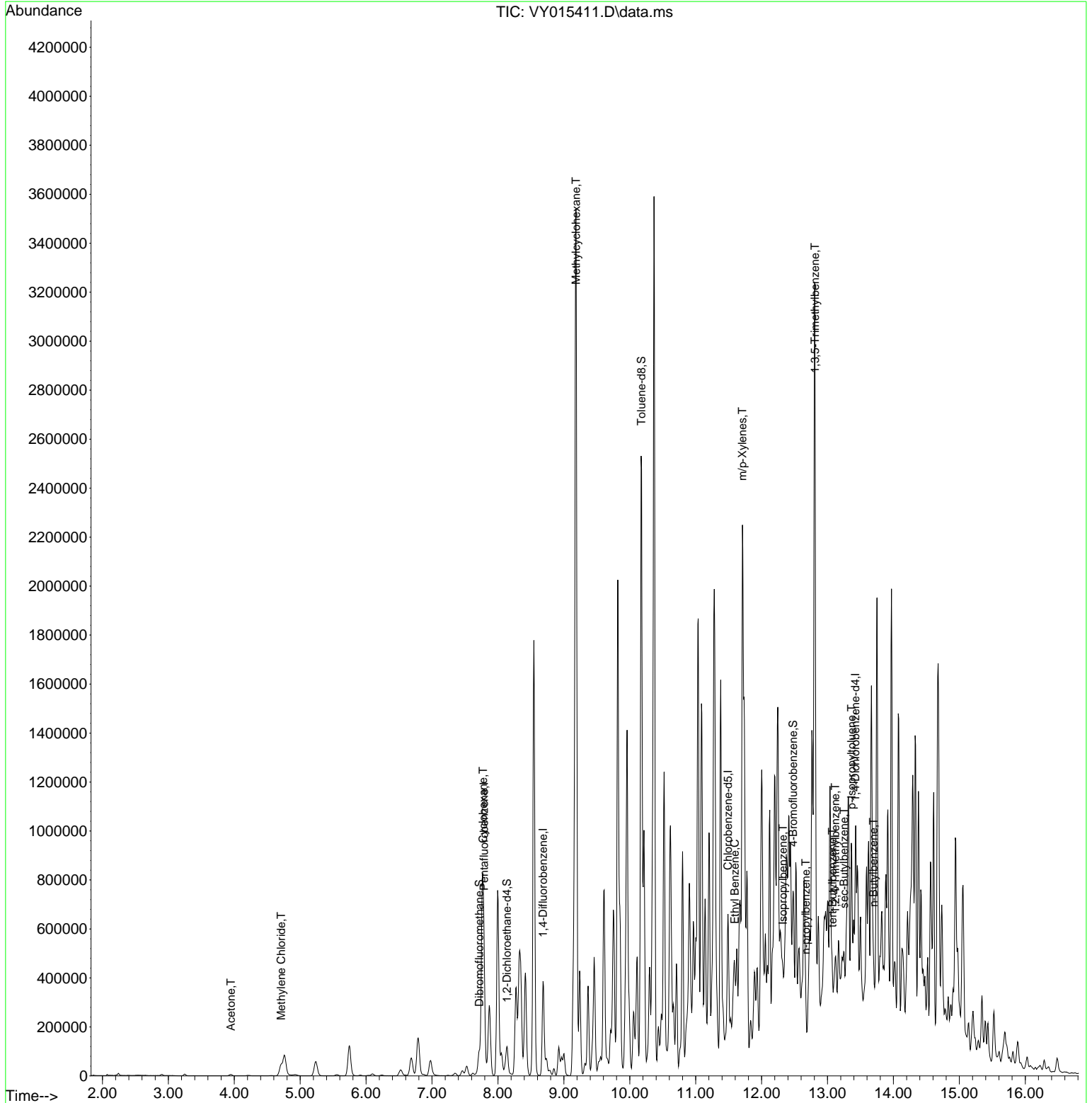
(#) = qualifier out of range (m) = manual integration (+) = signals summed

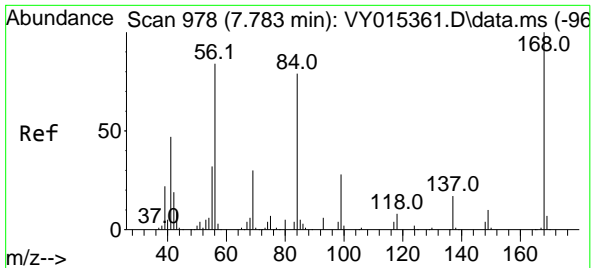
Data Path : Z:\voasrv\HPCHEM1\MSVOA\_Y\Data\VY090123\  
 Data File : VY015411.D  
 Acq On : 01 Sep 2023 13:33  
 Operator : SY/MD  
 Sample : 04256-03  
 Misc : 5.57g/5.0mL/MSVOA\_Y/SOIL  
 ALS Vial : 10 Sample Multiplier: 1

**Instrument :**  
 MSVOA\_Y  
**ClientSampleId :**  
 MW-2

Quant Time: Sep 01 23:31:08 2023  
 Quant Method : Z:\voasrv\HPCHEM1\MSVOA\_Y\methods\82Y082923S.M  
 Quant Title : SW846 8260  
 QLast Update : Thu Aug 31 20:01:47 2023  
 Response via : Initial Calibration

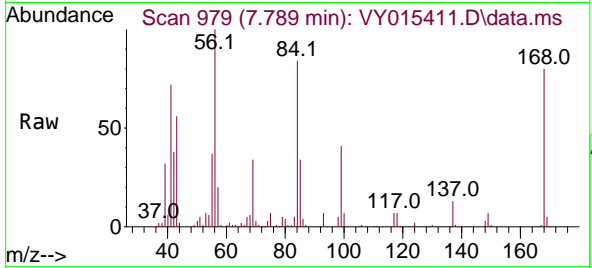
**Manual Integrations**  
**APPROVED**  
 Reviewed By :Semsettin Yesilyurt 09/04/2023  
 Supervised By :Mahesh Dadoda 09/05/2023





#1  
 Pentafluorobenzene  
 Concen: 50.000 ug/l  
 RT: 7.789 min Scan# 91  
 Delta R.T. 0.006 min  
 Lab File: VY015411.D  
 Acq: 01 Sep 2023 13:33

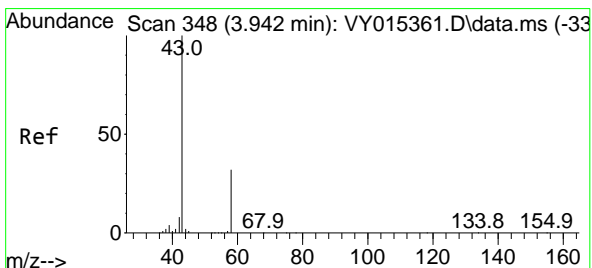
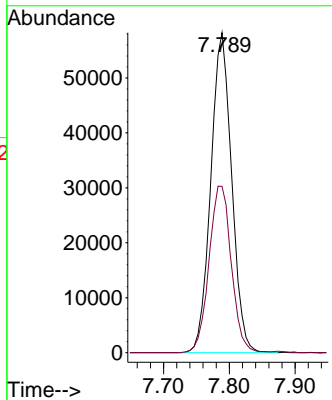
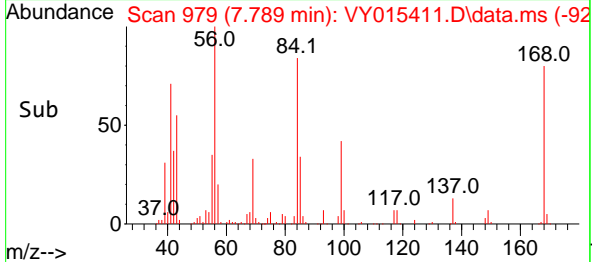
Instrument :  
 MSVOA\_Y  
 ClientSampleId :  
 MW-2



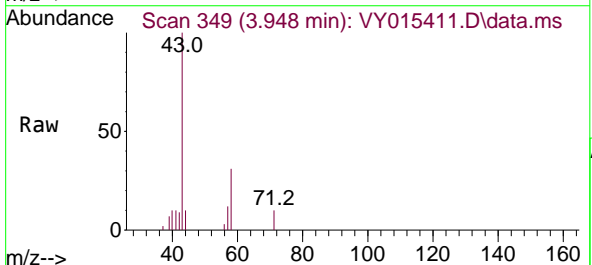
Tgt Ion:168 Resp: 12858  
 Ion Ratio Lower Upper  
 168 100  
 99 51.9 43.4 65.0

Manual Integrations  
 APPROVED

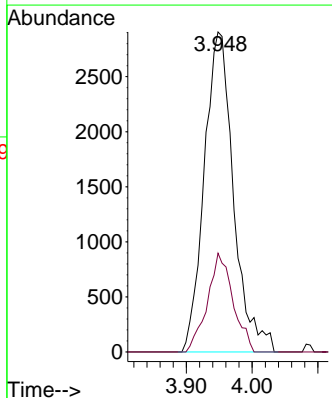
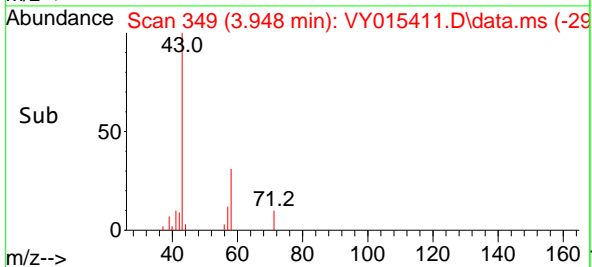
Reviewed By :Semsettin Yesilyurt 09/04/2023  
 Supervised By :Mahesh Dadoda 09/05/2023

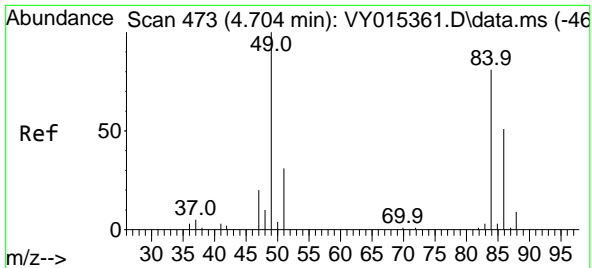


#16  
 Acetone  
 Concen: 15.601 ug/l  
 RT: 3.948 min Scan# 349  
 Delta R.T. 0.006 min  
 Lab File: VY015411.D  
 Acq: 01 Sep 2023 13:33



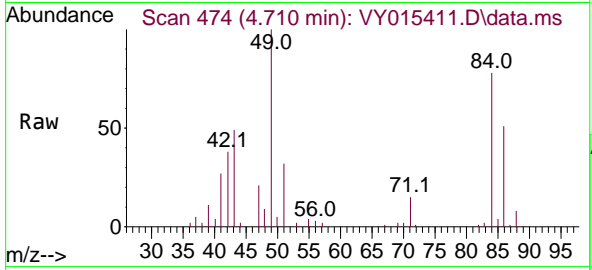
Tgt Ion: 43 Resp: 8976  
 Ion Ratio Lower Upper  
 43 100  
 58 30.9 22.7 34.1





#20  
 Methylene Chloride  
 Concen: 7.927 ug/l  
 RT: 4.710 min Scan# 41  
 Delta R.T. 0.006 min  
 Lab File: VY015411.D  
 Acq: 01 Sep 2023 13:33

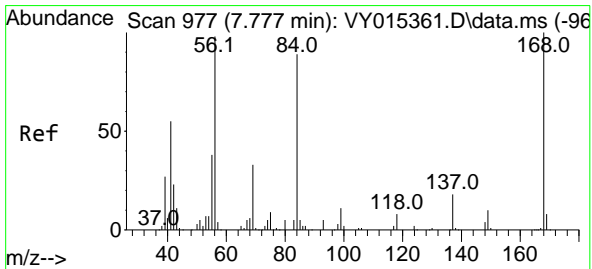
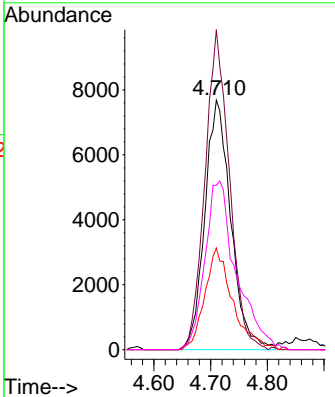
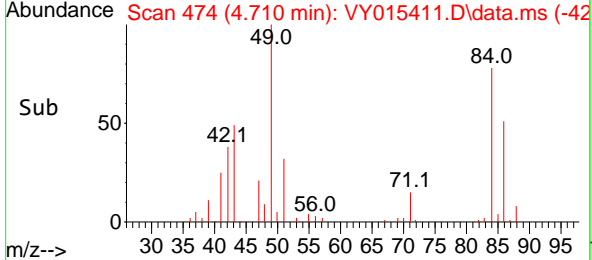
Instrument : MSVOA\_Y  
 ClientSampleId : MW-2



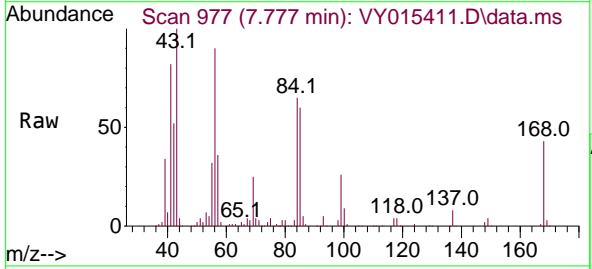
Tgt Ion: 84 Resp: 2454

Ion	Ratio	Lower	Upper
84	100		
49	128.2	106.9	160.3
51	40.8	33.2	49.8
86	65.9	51.0	76.6

Manual Integrations  
**APPROVED**  
 Reviewed By :Semsettin Yesilyurt 09/04/2023  
 Supervised By :Mahesh Dadoda 09/05/2023

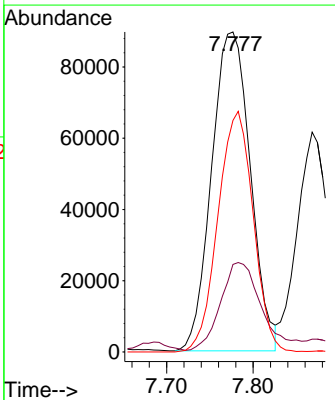
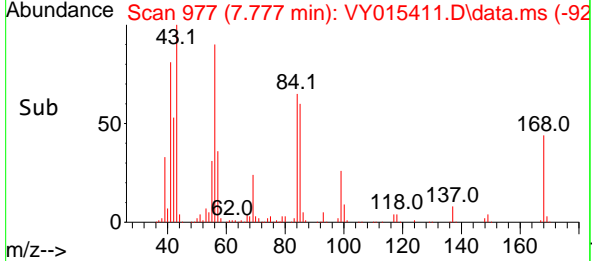


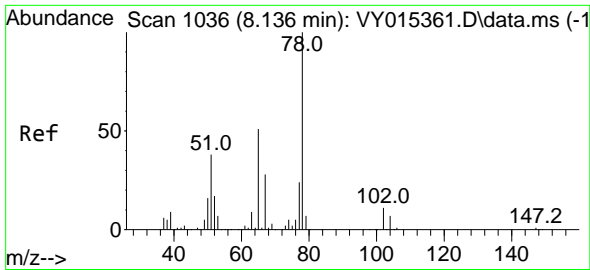
#31  
 Cyclohexane  
 Concen: 113.777 ug/l  
 RT: 7.777 min Scan# 977  
 Delta R.T. -0.006 min  
 Lab File: VY015411.D  
 Acq: 01 Sep 2023 13:33



Tgt Ion: 56 Resp: 278593

Ion	Ratio	Lower	Upper
56	100		
69	26.2	27.8	41.6#
84	72.6	66.4	99.6





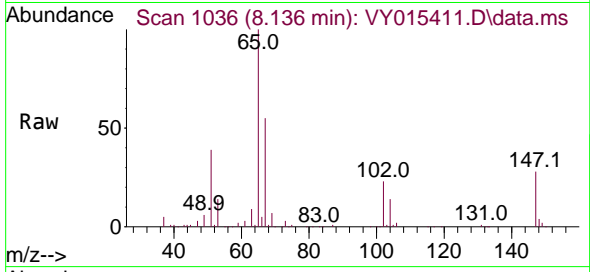
#33  
 1,2-Dichloroethane-d4  
 Concen: 57.218 ug/l  
 RT: 8.136 min Scan# 1036  
 Delta R.T. -0.000 min  
 Lab File: VY015411.D  
 Acq: 01 Sep 2023 13:33

Instrument :

MSVOA\_Y

ClientSampleId :

MW-2

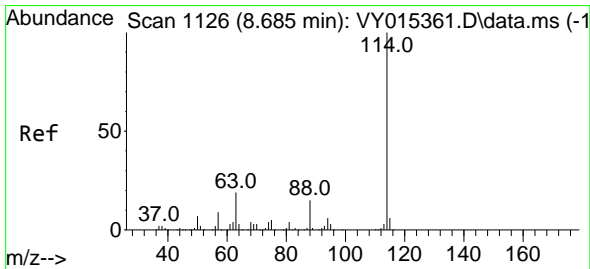
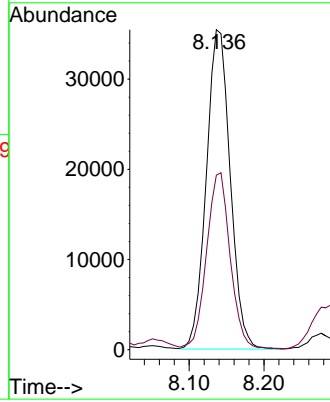
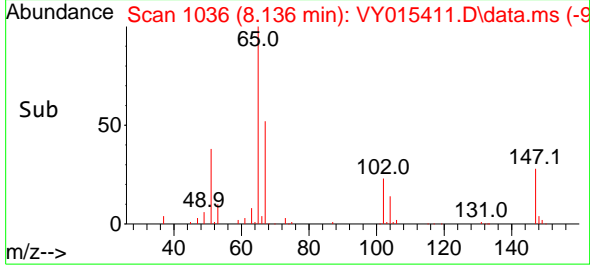


Tgt Ion: 65 Resp: 7887  
 Ion Ratio Lower Upper  
 65 100  
 67 54.1 0.0 101.8

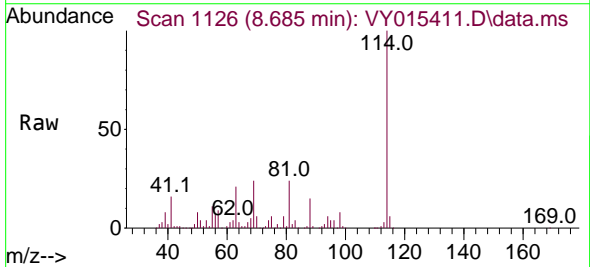
Manual Integrations

APPROVED

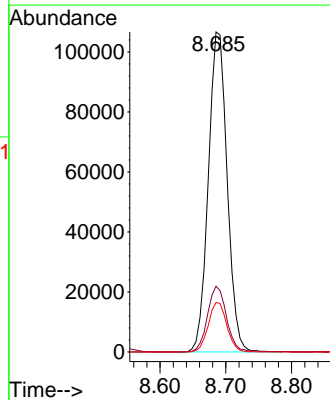
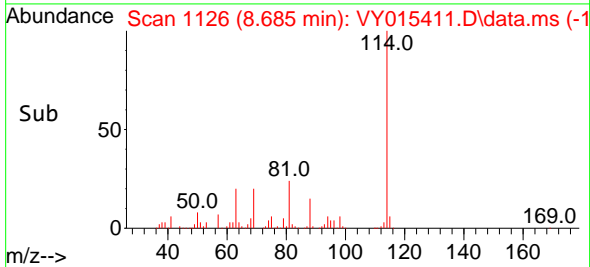
Reviewed By :Semsettin Yesilyurt 09/04/2023  
 Supervised By :Mahesh Dadoda 09/05/2023

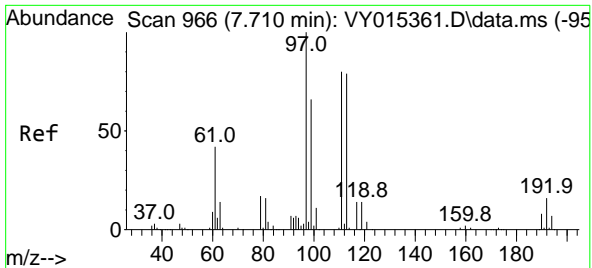


#34  
 1,4-Difluorobenzene  
 Concen: 50.000 ug/l  
 RT: 8.685 min Scan# 1126  
 Delta R.T. -0.000 min  
 Lab File: VY015411.D  
 Acq: 01 Sep 2023 13:33



Tgt Ion:114 Resp: 212393  
 Ion Ratio Lower Upper  
 114 100  
 63 20.5 0.0 42.4  
 88 15.5 0.0 30.6





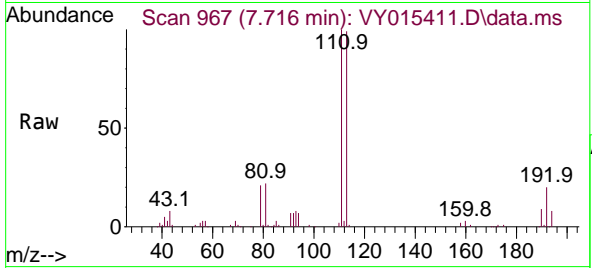
#35  
 Dibromofluoromethane  
 Concen: 53.847 ug/l  
 RT: 7.716 min Scan# 90  
 Delta R.T. -0.000 min  
 Lab File: VY015411.D  
 Acq: 01 Sep 2023 13:33

Instrument :

MSVOA\_Y

ClientSampleId :

MW-2

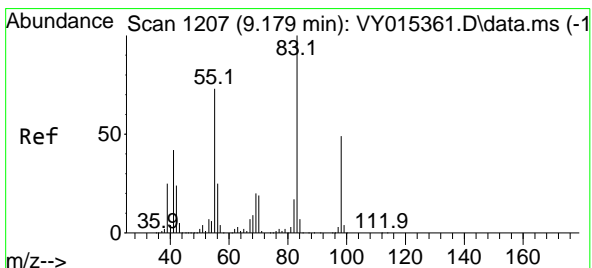
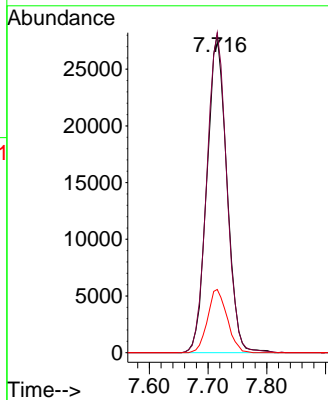
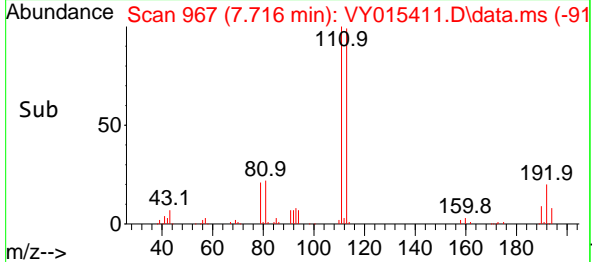


Tgt Ion:113 Resp: 6587  
 Ion Ratio Lower Upper  
 113 100  
 111 101.1 81.3 121.9  
 192 19.6 16.9 25.3

Manual Integrations

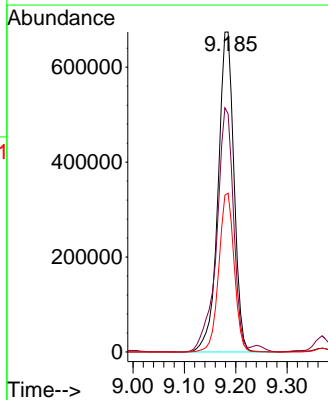
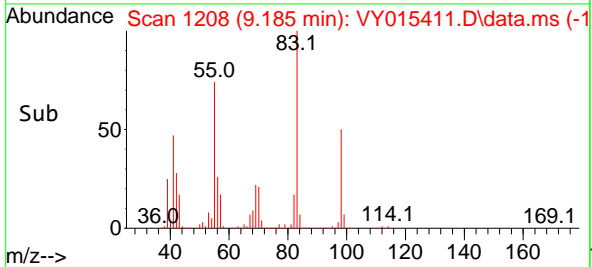
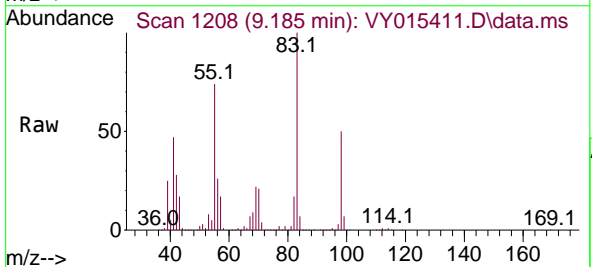
APPROVED

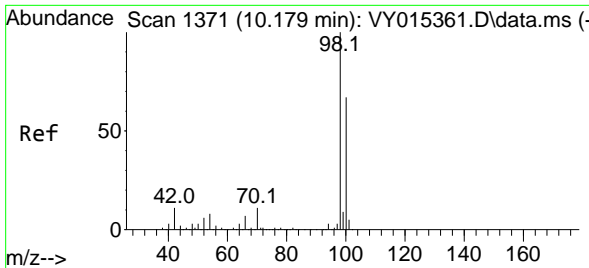
Reviewed By :Semsettin Yesilyurt 09/04/2023  
 Supervised By :Mahesh Dadoda 09/05/2023



#39  
 Methylcyclohexane  
 Concen: 535.619 ug/l  
 RT: 9.185 min Scan# 1208  
 Delta R.T. 0.006 min  
 Lab File: VY015411.D  
 Acq: 01 Sep 2023 13:33

Tgt Ion: 83 Resp: 1448462  
 Ion Ratio Lower Upper  
 83 100  
 55 74.4 63.0 94.4  
 98 49.6 37.4 56.2





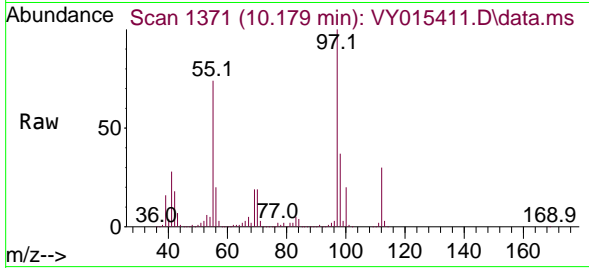
#50  
 Toluene-d8  
 Concen: 82.637 ug/l  
 RT: 10.179 min Scan# 1371  
 Delta R.T. -0.000 min  
 Lab File: VY015411.D  
 Acq: 01 Sep 2023 13:33

Instrument :

MSVOA\_Y

ClientSampleId :

MW-2

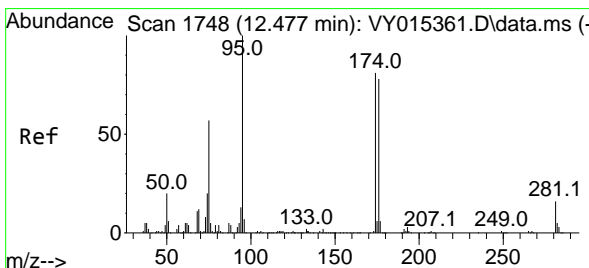
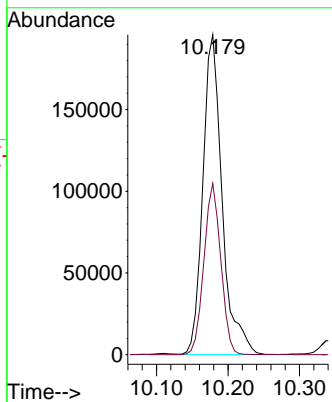
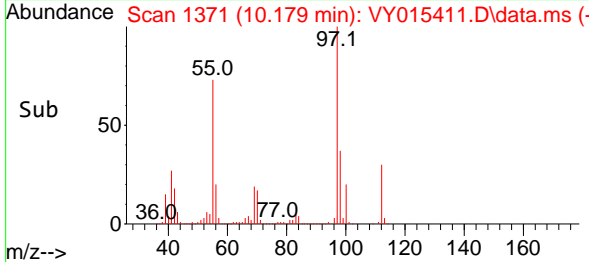


Tgt Ion: 98 Resp: 366094  
 Ion Ratio Lower Upper  
 98 100  
 100 47.0 50.1 75.1

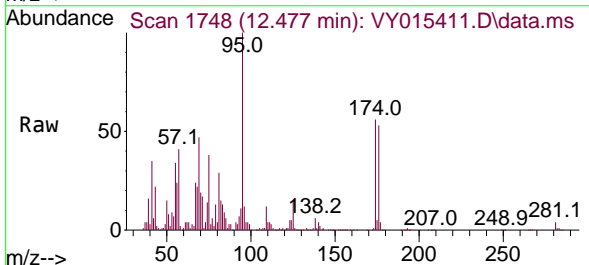
Manual Integrations

APPROVED

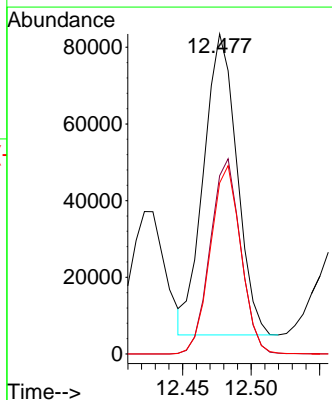
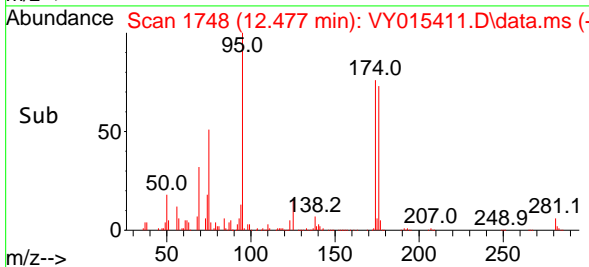
Reviewed By :Semsettin Yesilyurt 09/04/2023  
 Supervised By :Mahesh Dadoda 09/05/2023

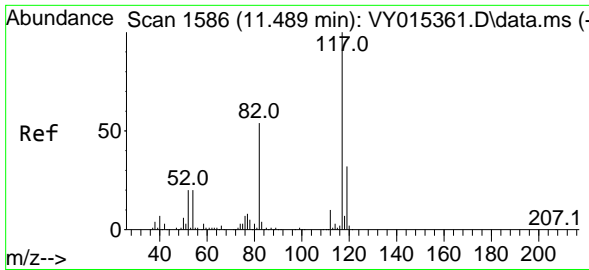


#62  
 4-Bromofluorobenzene  
 Concen: 80.540 ug/l  
 RT: 12.477 min Scan# 1748  
 Delta R.T. -0.000 min  
 Lab File: VY015411.D  
 Acq: 01 Sep 2023 13:33



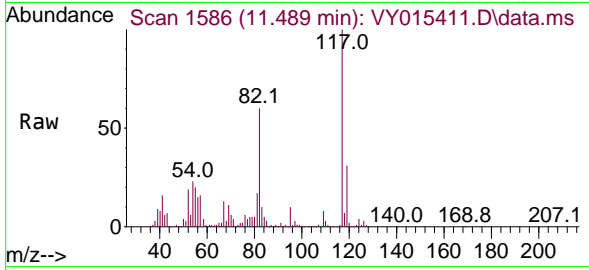
Tgt Ion: 95 Resp: 132459  
 Ion Ratio Lower Upper  
 95 100  
 174 59.5 0.0 178.2  
 176 57.7 0.0 173.8





#63  
 Chlorobenzene-d5  
 Concen: 50.000 ug/l  
 RT: 11.489 min Scan# 11  
 Delta R.T. -0.000 min  
 Lab File: VY015411.D  
 Acq: 01 Sep 2023 13:33

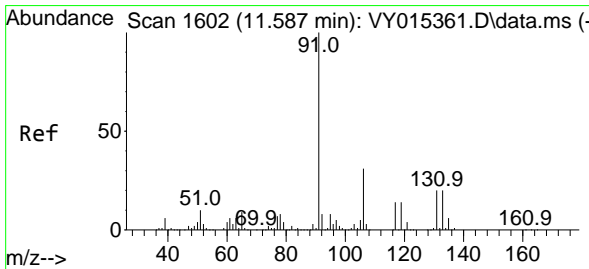
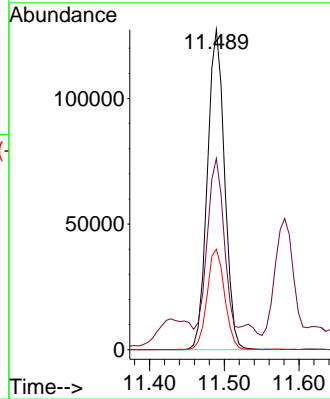
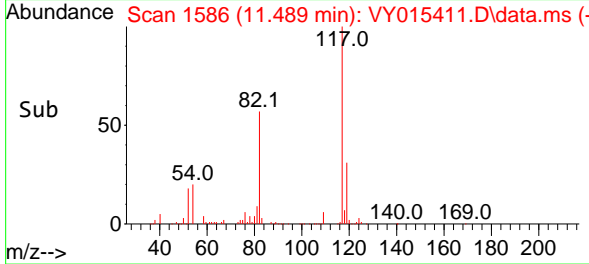
Instrument :  
 MSVOA\_Y  
 ClientSampleId :  
 MW-2



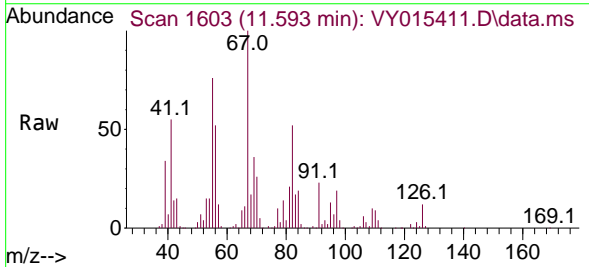
Tgt Ion:117 Resp: 20346  
 Ion Ratio Lower Upper  
 117 100  
 82 51.0 43.4 65.0  
 119 31.3 26.3 39.5

Manual Integrations  
 APPROVED

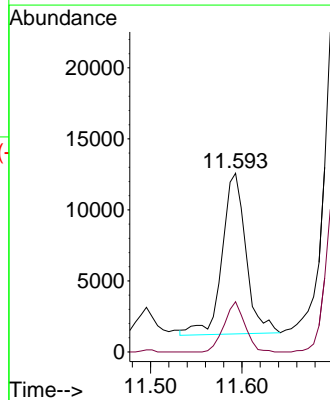
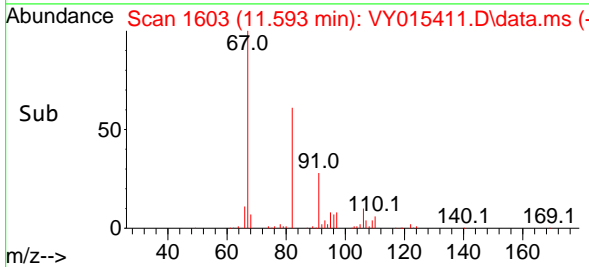
Reviewed By :Semsettin Yesilyurt 09/04/2023  
 Supervised By :Mahesh Dadoda 09/05/2023



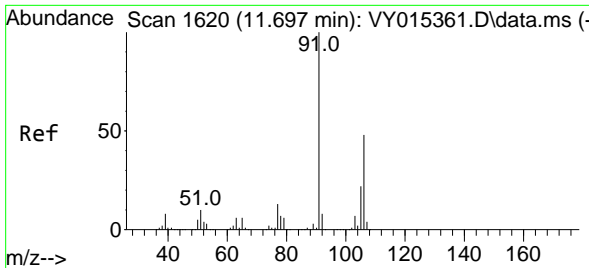
#67  
 Ethyl Benzene  
 Concen: 2.605 ug/l  
 RT: 11.593 min Scan# 1603  
 Delta R.T. 0.006 min  
 Lab File: VY015411.D  
 Acq: 01 Sep 2023 13:33



Tgt Ion: 91 Resp: 20510  
 Ion Ratio Lower Upper  
 91 100  
 106 31.5 24.6 36.8

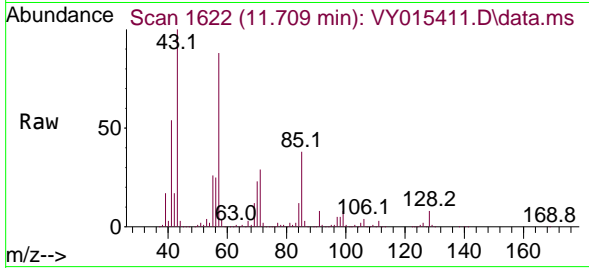






#68  
 m/p-Xylenes  
 Concen: 8.752 ug/l  
 RT: 11.709 min Scan# 106  
 Delta R.T. 0.006 min  
 Lab File: VY015411.D  
 Acq: 01 Sep 2023 13:33

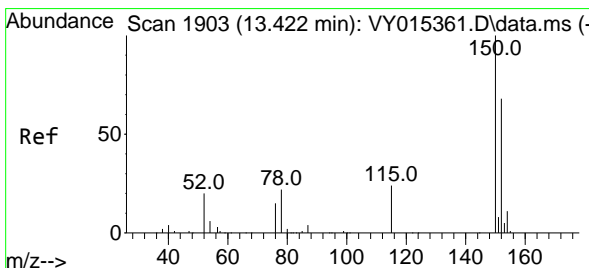
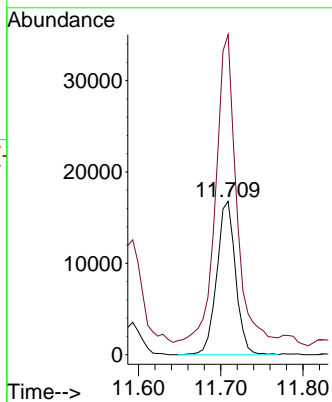
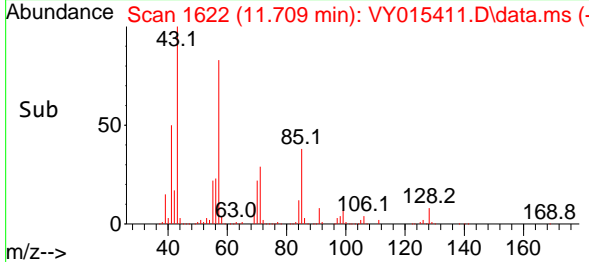
Instrument : MSVOA\_Y  
 ClientSampleId : MW-2



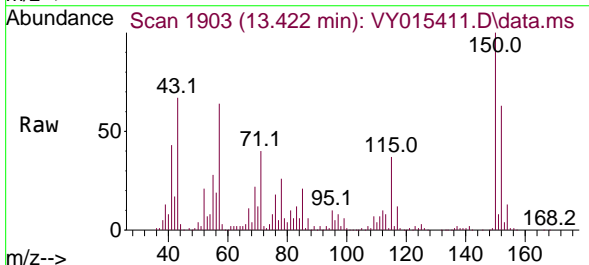
Tgt Ion:106 Resp: 26700  
 Ion Ratio Lower Upper  
 106 100  
 91 226.1 166.1 249.1

Manual Integrations  
 APPROVED

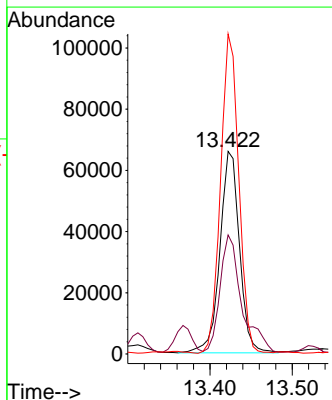
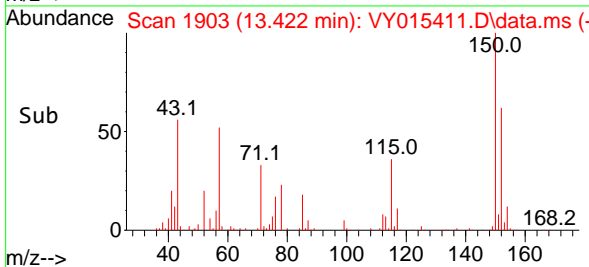
Reviewed By :Semsettin Yesilyurt 09/04/2023  
 Supervised By :Mahesh Dadoda 09/05/2023

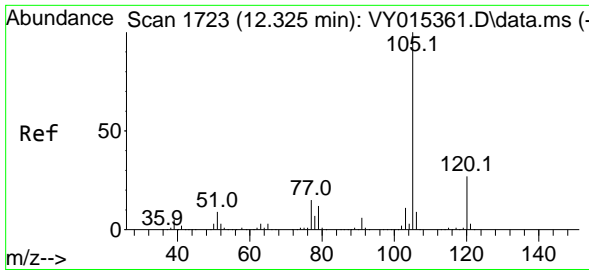


#72  
 1,4-Dichlorobenzene-d4  
 Concen: 50.000 ug/l  
 RT: 13.422 min Scan# 1903  
 Delta R.T. -0.000 min  
 Lab File: VY015411.D  
 Acq: 01 Sep 2023 13:33



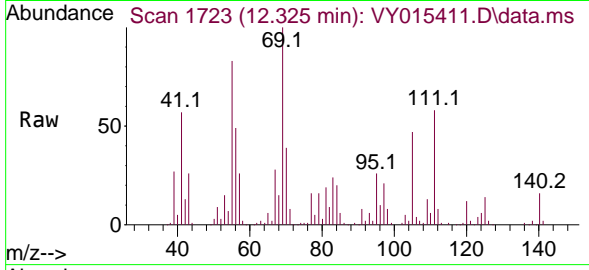
Tgt Ion:152 Resp: 109136  
 Ion Ratio Lower Upper  
 152 100  
 115 63.9 28.8 86.5  
 150 146.6 0.0 348.8





#73  
 Isopropylbenzene  
 Concen: 4.398 ug/l  
 RT: 12.325 min Scan# 1723  
 Delta R.T. -0.000 min  
 Lab File: VY015411.D  
 Acq: 01 Sep 2023 13:33

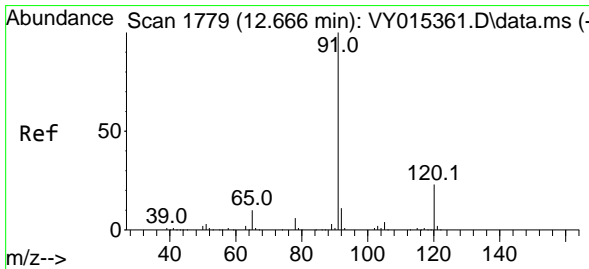
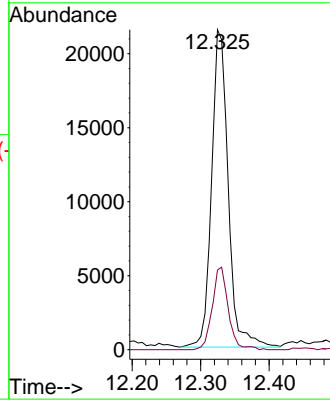
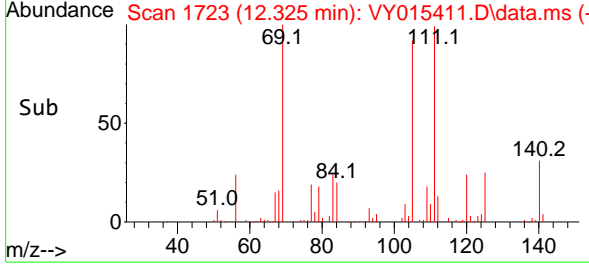
Instrument : MSVOA\_Y  
 ClientSampleId : MW-2



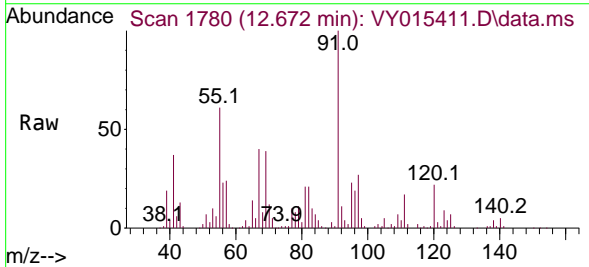
Tgt Ion: 105 Resp: 3605  
 Ion Ratio Lower Upper  
 105 100  
 120 25.1 13.3 39.9

Manual Integrations  
 APPROVED

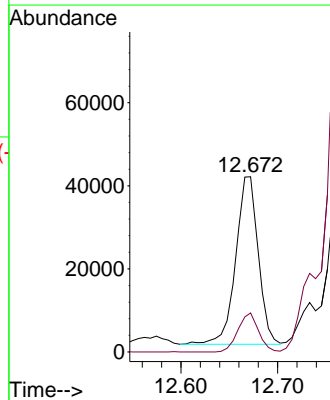
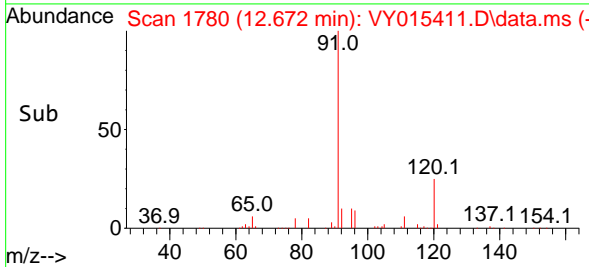
Reviewed By : Semsettin Yesilyurt 09/04/2023  
 Supervised By : Mahesh Dadoda 09/05/2023

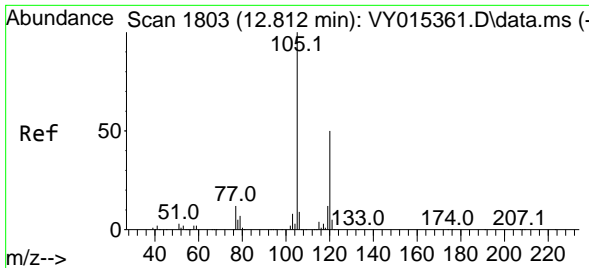


#78  
 n-propylbenzene  
 Concen: 6.589 ug/l  
 RT: 12.672 min Scan# 1780  
 Delta R.T. 0.006 min  
 Lab File: VY015411.D  
 Acq: 01 Sep 2023 13:33



Tgt Ion: 91 Resp: 65362  
 Ion Ratio Lower Upper  
 91 100  
 120 21.3 11.5 34.4





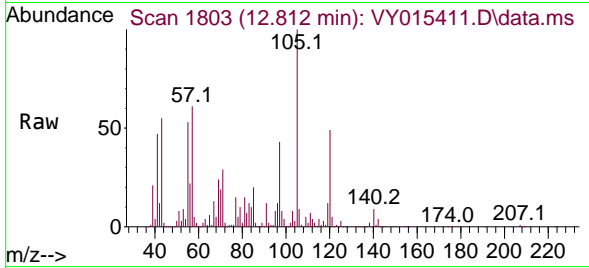
#80  
 1,3,5-Trimethylbenzene  
 Concen: 66.082 ug/l  
 RT: 12.812 min Scan# 1803  
 Delta R.T. -0.000 min  
 Lab File: VY015411.D  
 Acq: 01 Sep 2023 13:33

Instrument :

MSVOA\_Y

ClientSampleId :

MW-2

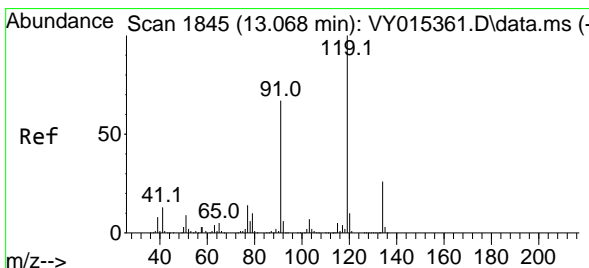
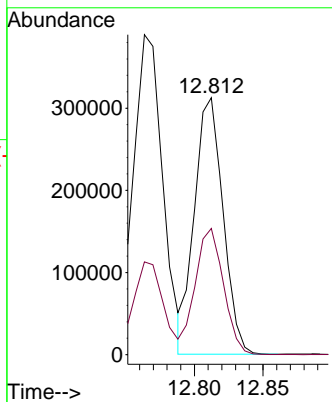
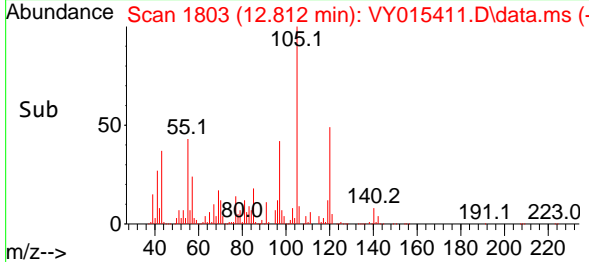


Tgt Ion:105 Resp: 453100  
 Ion Ratio Lower Upper  
 105 100  
 120 48.8 23.9 71.7

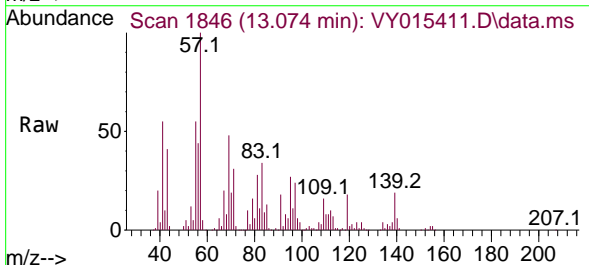
Manual Integrations

APPROVED

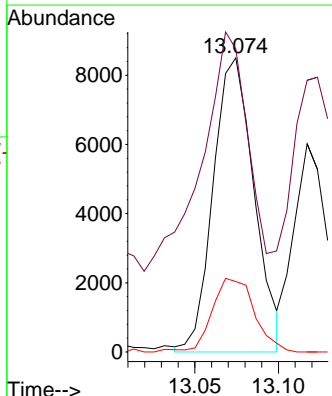
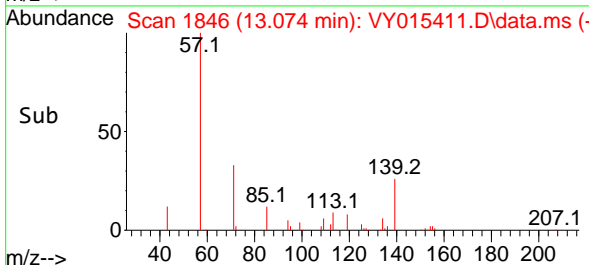
Reviewed By :Semsettin Yesilyurt 09/04/2023  
 Supervised By :Mahesh Dadoda 09/05/2023

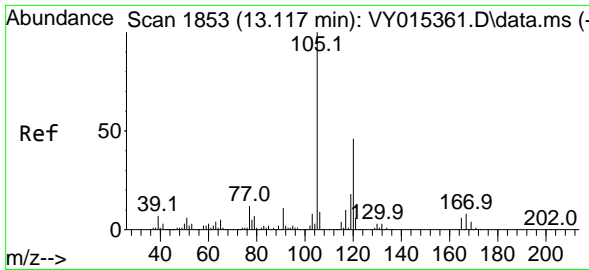


#83  
 tert-Butylbenzene  
 Concen: 2.412 ug/l m  
 RT: 13.074 min Scan# 1846  
 Delta R.T. -0.000 min  
 Lab File: VY015411.D  
 Acq: 01 Sep 2023 13:33



Tgt Ion:119 Resp: 14483  
 Ion Ratio Lower Upper  
 119 100  
 91 0.0 32.9 98.6#  
 134 0.0 13.0 38.9#





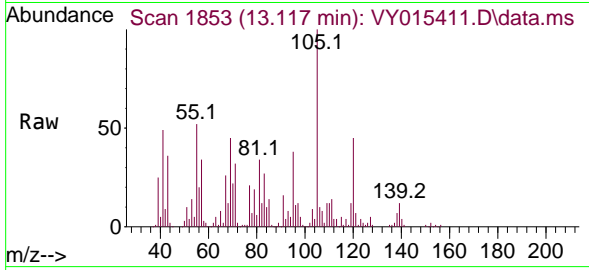
#84  
 1,2,4-Trimethylbenzene  
 Concen: 10.311 ug/l  
 RT: 13.117 min Scan# 1853  
 Delta R.T. -0.000 min  
 Lab File: VY015411.D  
 Acq: 01 Sep 2023 13:33

Instrument :

MSVOA\_Y

ClientSampleId :

MW-2

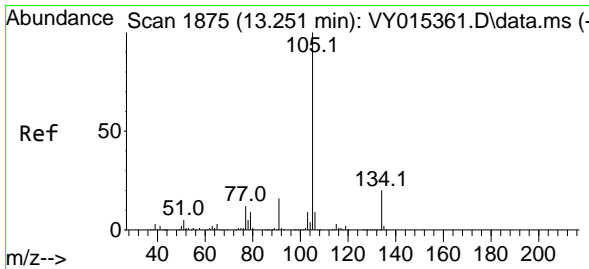
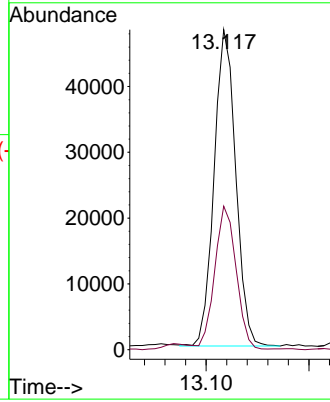
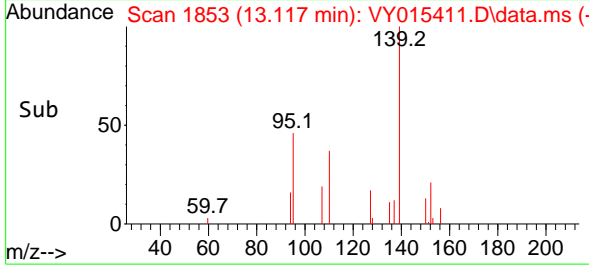


Tgt Ion:105 Resp: 70194  
 Ion Ratio Lower Upper  
 105 100  
 120 44.6 22.2 66.6

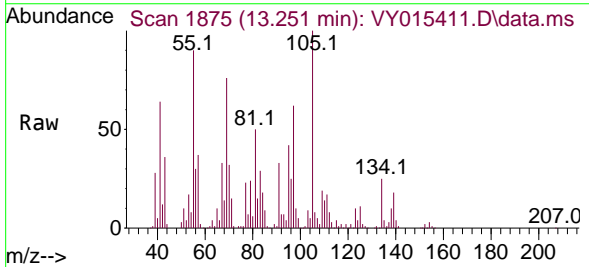
Manual Integrations

APPROVED

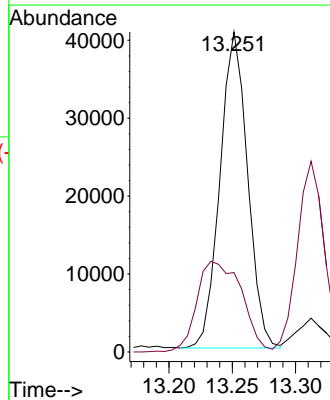
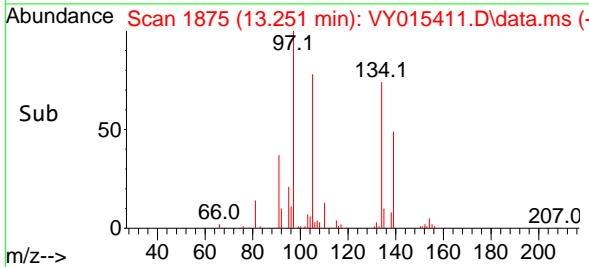
Reviewed By :Semsettin Yesilyurt 09/04/2023  
 Supervised By :Mahesh Dadoda 09/05/2023

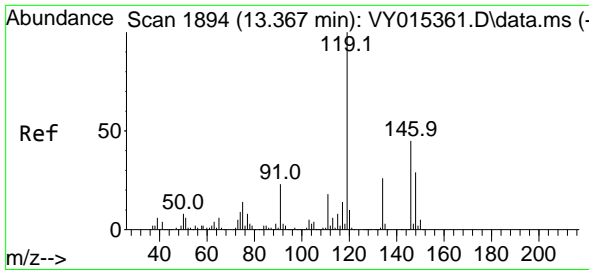


#85  
 sec-Butylbenzene  
 Concen: 6.871 ug/l  
 RT: 13.251 min Scan# 1875  
 Delta R.T. -0.000 min  
 Lab File: VY015411.D  
 Acq: 01 Sep 2023 13:33



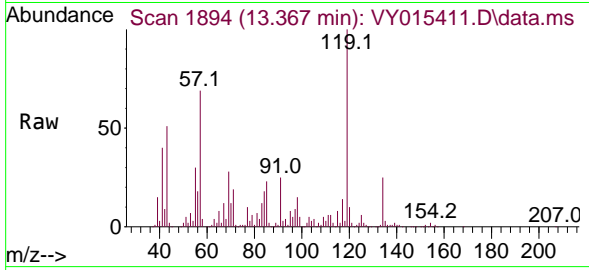
Tgt Ion:105 Resp: 61547  
 Ion Ratio Lower Upper  
 105 100  
 134 46.4 10.2 30.6#





#86  
 p-Isopropyltoluene  
 Concen: 22.645 ug/l  
 RT: 13.367 min Scan# 1894  
 Delta R.T. -0.000 min  
 Lab File: VY015411.D  
 Acq: 01 Sep 2023 13:33

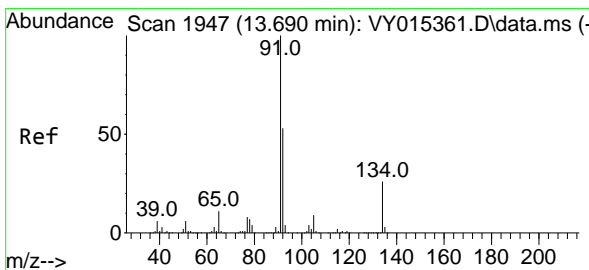
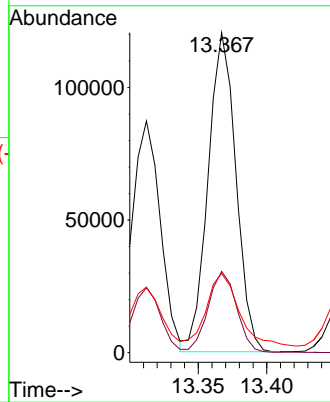
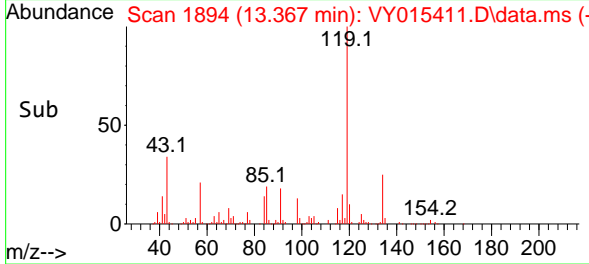
Instrument : MSVOA\_Y  
 ClientSampleId : MW-2



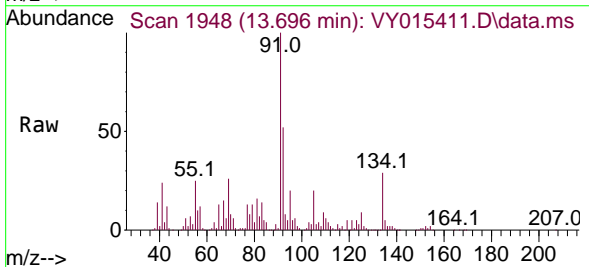
Tgt Ion:119 Resp: 170000  
 Ion Ratio Lower Upper  
 119 100  
 134 25.9 13.3 39.8  
 91 26.2 12.4 37.4

Manual Integrations  
 APPROVED

Reviewed By :Semsettin Yesilyurt 09/04/2023  
 Supervised By :Mahesh Dadoda 09/05/2023



#89  
 n-Butylbenzene  
 Concen: 14.761 ug/l  
 RT: 13.696 min Scan# 1948  
 Delta R.T. -0.000 min  
 Lab File: VY015411.D  
 Acq: 01 Sep 2023 13:33



Tgt Ion: 91 Resp: 104305  
 Ion Ratio Lower Upper  
 91 100  
 92 69.2 25.4 76.0  
 134 0.0 12.6 37.6#

