

Data Path : Z:\voasrv\HPCHEM1\MSVOA\_Y\Data\VY090623\  
 Data File : VY015447.D  
 Acq On : 06 Sep 2023 14:07  
 Operator : SY/MD  
 Sample : 04304-04  
 Misc : 5.01g/5.0mL/MSVOA\_Y/SOIL  
 ALS Vial : 8 Sample Multiplier: 1

Instrument :  
 MSVOA\_Y  
 ClientSampleId :  
 WC-1

Quant Time: Sep 06 16:28:04 2023  
 Quant Method : Z:\voasrv\HPCHEM1\MSVOA\_Y\methods\82Y082923S.M  
 Quant Title : SW846 8260  
 QLast Update : Thu Aug 31 20:01:47 2023  
 Response via : Initial Calibration

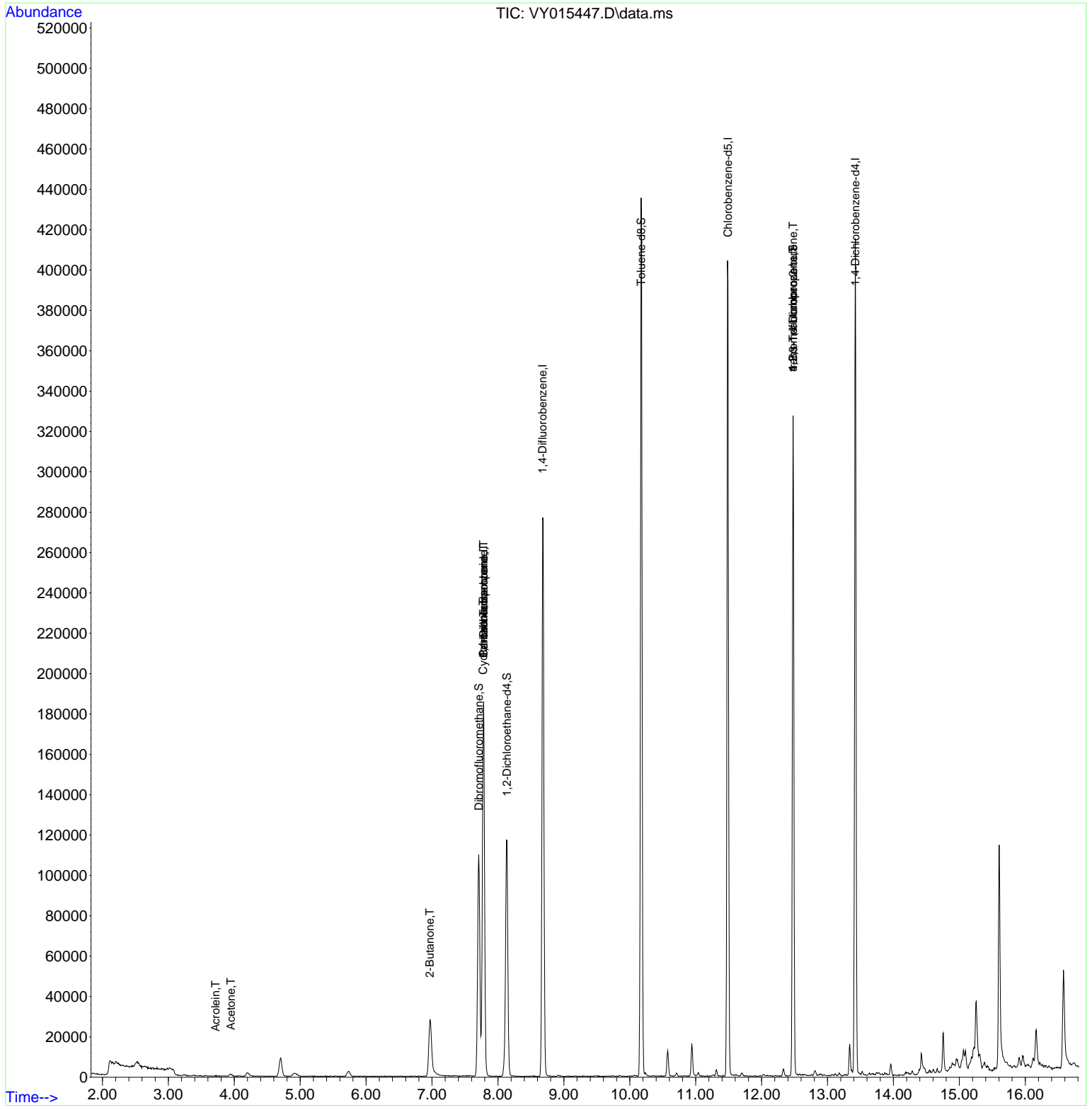
Compound	R.T.	QIon	Response	Conc	Units	Dev(Min)
-----						
Internal Standards						
1) Pentafluorobenzene	7.783	168	145879	50.000	ug/l	0.00
34) 1,4-Difluorobenzene	8.679	114	242825	50.000	ug/l	0.00
63) Chlorobenzene-d5	11.489	117	218468	50.000	ug/l	0.00
72) 1,4-Dichlorobenzene-d4	13.422	152	102572	50.000	ug/l	0.00
System Monitoring Compounds						
33) 1,2-Dichloroethane-d4	8.136	65	91050	58.223	ug/l	0.00
Spiked Amount	50.000	Range	50 - 163	Recovery	=	116.440%
35) Dibromofluoromethane	7.710	113	77450	55.376	ug/l	0.00
Spiked Amount	50.000	Range	54 - 147	Recovery	=	110.760%
50) Toluene-d8	10.173	98	284271	56.125	ug/l	0.00
Spiked Amount	50.000	Range	58 - 134	Recovery	=	112.260%
62) 4-Bromofluorobenzene	12.477	95	95154	50.606	ug/l	0.00
Spiked Amount	50.000	Range	30 - 143	Recovery	=	101.220%
Target Compounds						
					Qvalue	
11) Tert butyl alcohol	4.924	59	1860	Below Cal	#	89
13) Acrolein	3.716	56	71	11.802	ug/l #	14
16) Acetone	3.948	43	2005	3.072	ug/l	90
20) Methylene Chloride	4.704	84	6701	Below Cal		95
25) 2-Butanone	6.966	43	1705	1.842	ug/l	96
31) Cyclohexane	7.777	56	2910	1.048	ug/l #	1
36) 1,1-Dichloropropene	7.783	75	11574	4.713	ug/l #	51
38) Carbon Tetrachloride	7.783	117	14452	5.698	ug/l #	15
76) 1,2,3-Trichloropropane	12.477	75	51689	38.001	ug/l #	100
81) trans-1,4-Dichloro-2-b...	12.477	75	51689	83.825	ug/l #	11
-----						

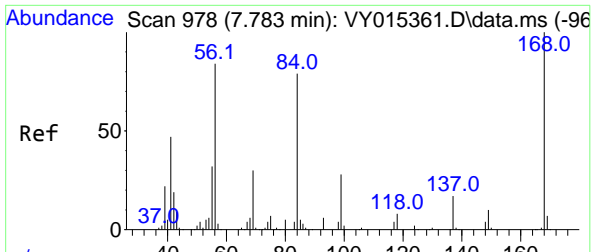
(#) = qualifier out of range (m) = manual integration (+) = signals summed

Data Path : Z:\voasrv\HPCHEM1\MSVOA\_Y\Data\VY090623\  
 Data File : VY015447.D  
 Acq On : 06 Sep 2023 14:07  
 Operator : SY/MD  
 Sample : 04304-04  
 Misc : 5.01g/5.0mL/MSVOA\_Y/SOIL  
 ALS Vial : 8 Sample Multiplier: 1

Instrument :  
 MSVOA\_Y  
 ClientSampleId :  
 WC-1

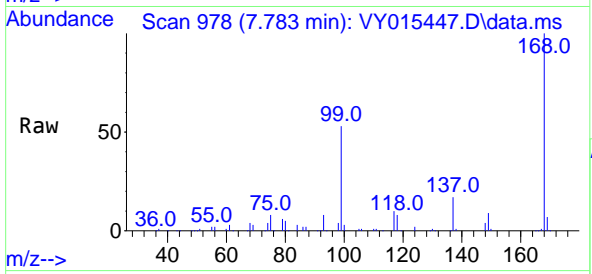
Quant Time: Sep 06 16:28:04 2023  
 Quant Method : Z:\voasrv\HPCHEM1\MSVOA\_Y\methods\82Y082923S.M  
 Quant Title : SW846 8260  
 QLast Update : Thu Aug 31 20:01:47 2023  
 Response via : Initial Calibration



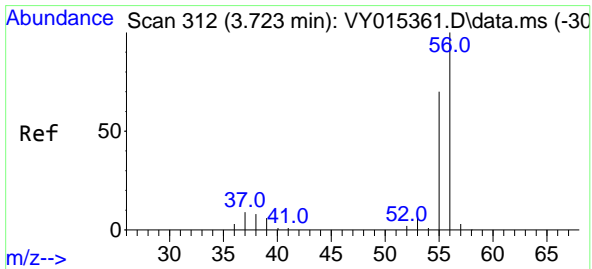
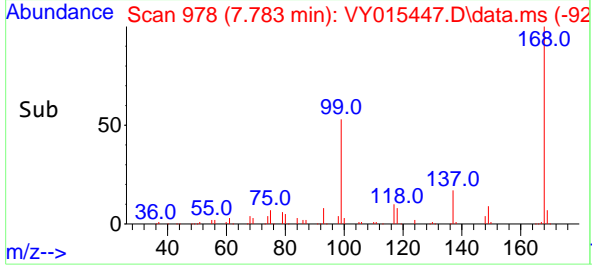
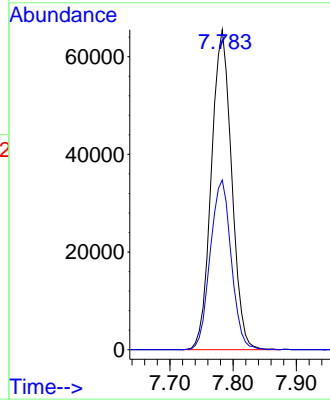


#1  
 Pentafluorobenzene  
 Concen: 50.000 ug/l  
 RT: 7.783 min Scan# 91  
 Delta R.T. -0.000 min  
 Lab File: VY015447.D  
 Acq: 06 Sep 2023 14:07

Instrument :  
 MSVOA\_Y  
 ClientSampleId :  
 WC-1

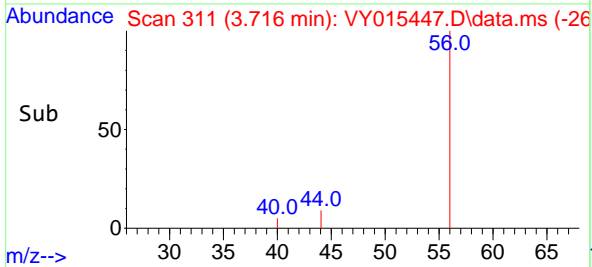
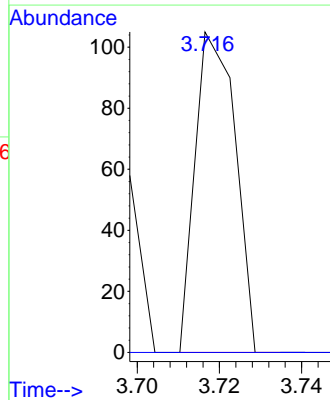
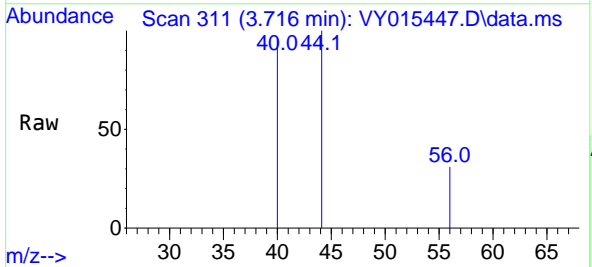


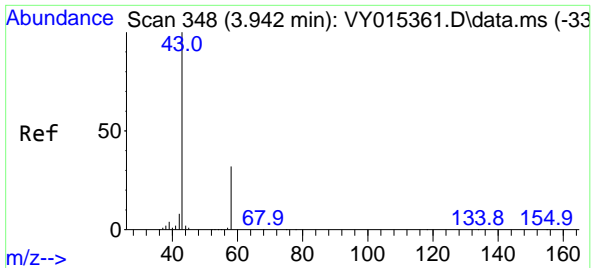
Tgt Ion:168 Resp: 145879  
 Ion Ratio Lower Upper  
 168 100  
 99 53.0 43.4 65.0



#13  
 Acrolein  
 Concen: 11.802 ug/l  
 RT: 3.716 min Scan# 311  
 Delta R.T. -0.007 min  
 Lab File: VY015447.D  
 Acq: 06 Sep 2023 14:07

Tgt Ion: 56 Resp: 71  
 Ion Ratio Lower Upper  
 56 100  
 55 0.0 57.0 85.4#

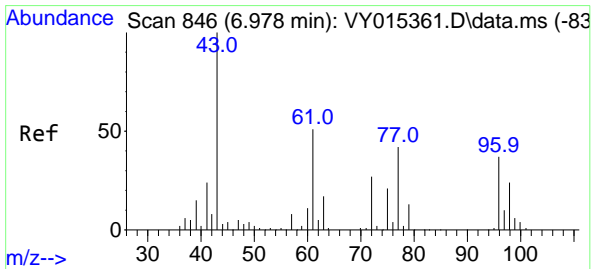
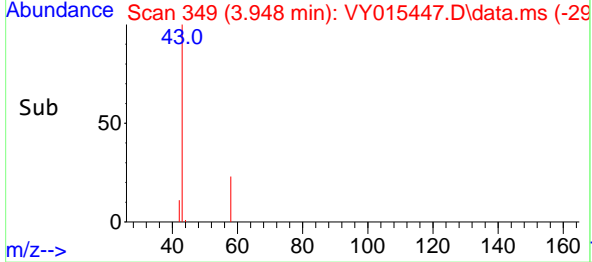
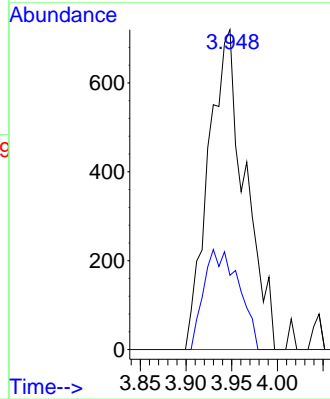
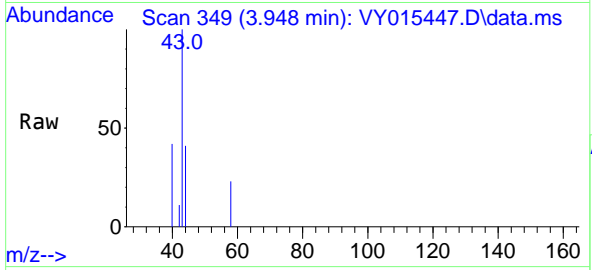




#16  
 Acetone  
 Concen: 3.072 ug/l  
 RT: 3.948 min Scan# 34  
 Delta R.T. 0.006 min  
 Lab File: VY015447.D  
 Acq: 06 Sep 2023 14:07

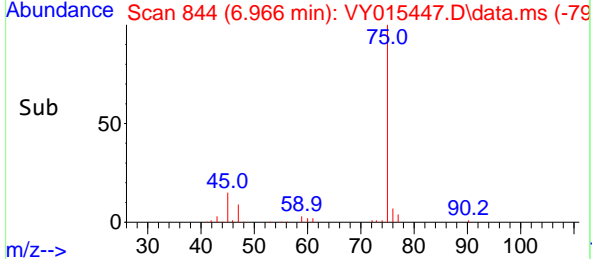
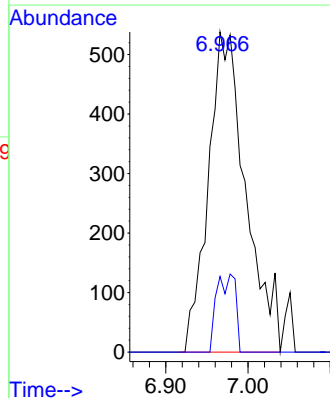
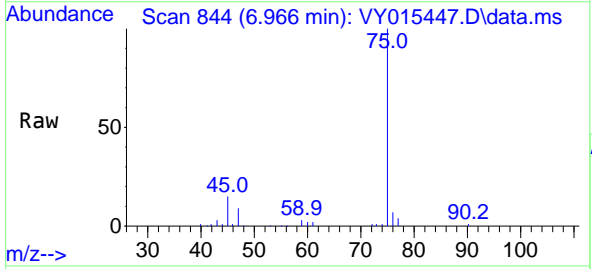
Instrument : MSVOA\_Y  
 ClientSampleId : WC-1

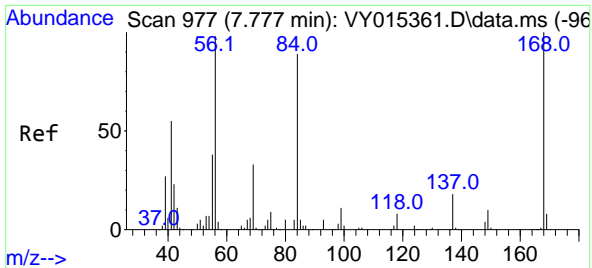
Tgt Ion: 43 Resp: 2005  
 Ion Ratio Lower Upper  
 43 100  
 58 23.2 22.7 34.1



#25  
 2-Butanone  
 Concen: 1.842 ug/l  
 RT: 6.966 min Scan# 844  
 Delta R.T. -0.012 min  
 Lab File: VY015447.D  
 Acq: 06 Sep 2023 14:07

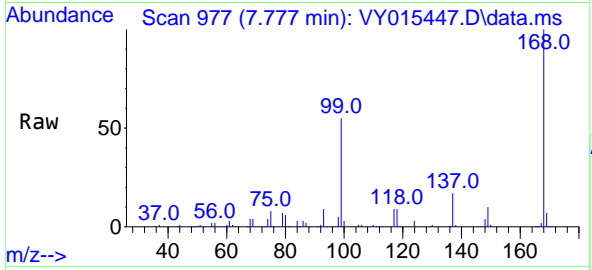
Tgt Ion: 43 Resp: 1705  
 Ion Ratio Lower Upper  
 43 100  
 72 23.6 20.5 30.7



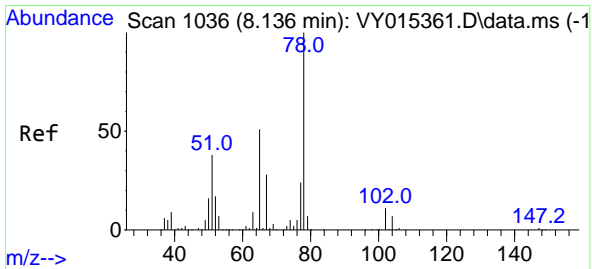
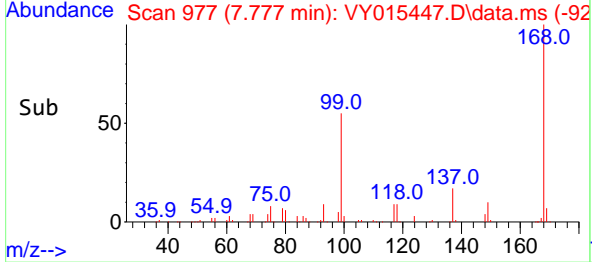
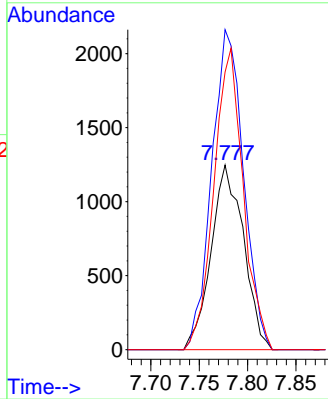


#31  
 Cyclohexane  
 Concen: 1.048 ug/l  
 RT: 7.777 min Scan# 91  
 Delta R.T. -0.006 min  
 Lab File: VY015447.D  
 Acq: 06 Sep 2023 14:07

Instrument :  
 MSVOA\_Y  
 ClientSampleId :  
 WC-1

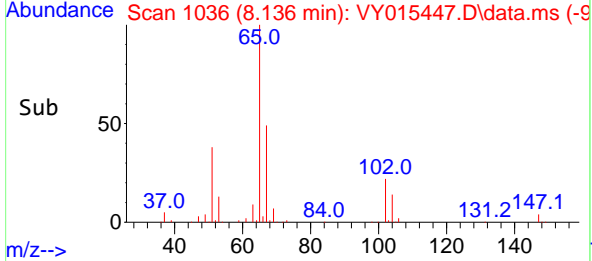
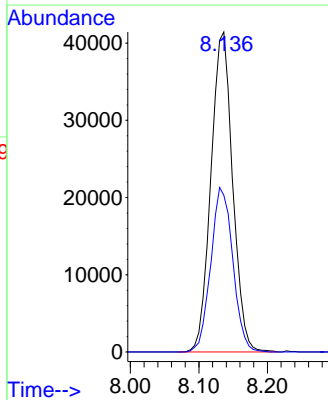
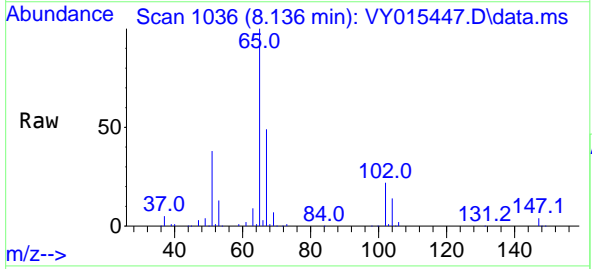


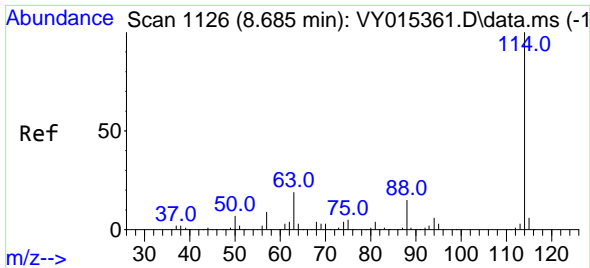
Tgt Ion: 56 Resp: 2910  
 Ion Ratio Lower Upper  
 56 100  
 69 173.4 27.8 41.6#  
 84 156.5 66.4 99.6#



#33  
 1,2-Dichloroethane-d4  
 Concen: 58.223 ug/l  
 RT: 8.136 min Scan# 1036  
 Delta R.T. 0.000 min  
 Lab File: VY015447.D  
 Acq: 06 Sep 2023 14:07

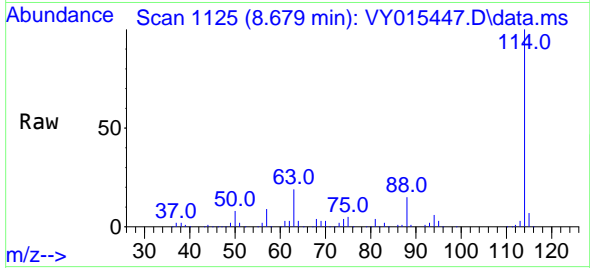
Tgt Ion: 65 Resp: 91050  
 Ion Ratio Lower Upper  
 65 100  
 67 52.2 0.0 101.8



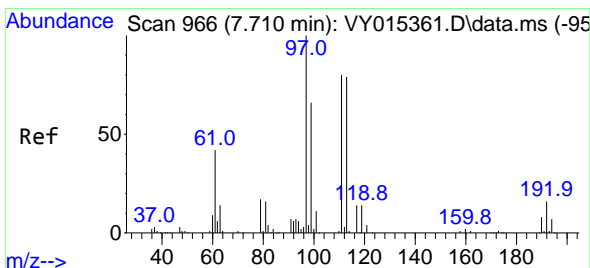
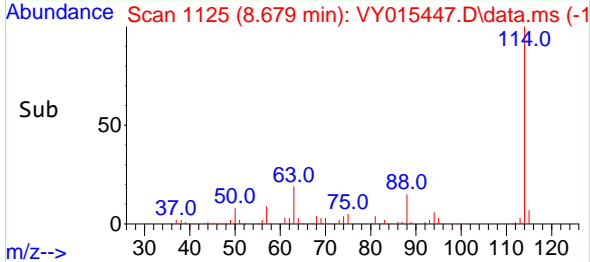
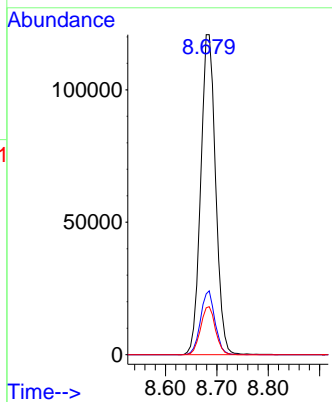


#34  
 1,4-Difluorobenzene  
 Concen: 50.000 ug/l  
 RT: 8.679 min Scan# 1125  
 Delta R.T. -0.006 min  
 Lab File: VY015447.D  
 Acq: 06 Sep 2023 14:07

Instrument : MSVOA\_Y  
 ClientSampleId : WC-1

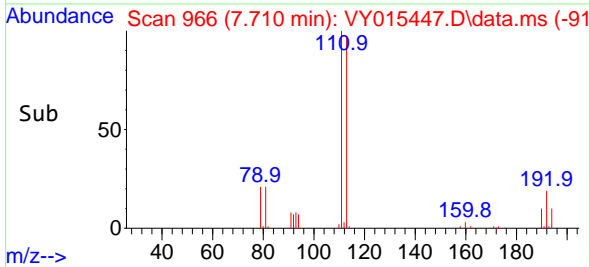
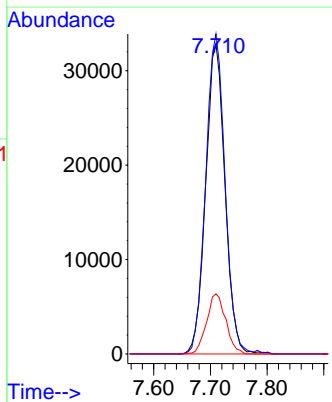
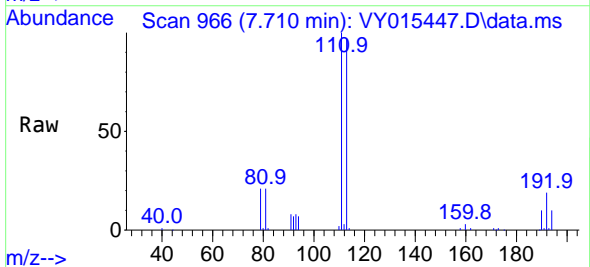


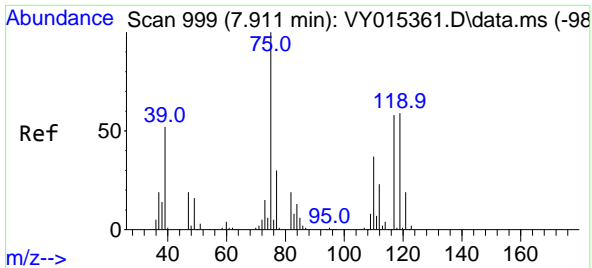
Tgt Ion:114 Resp: 242825  
 Ion Ratio Lower Upper  
 114 100  
 63 19.0 0.0 42.4  
 88 14.6 0.0 30.6



#35  
 Dibromofluoromethane  
 Concen: 55.376 ug/l  
 RT: 7.710 min Scan# 966  
 Delta R.T. -0.006 min  
 Lab File: VY015447.D  
 Acq: 06 Sep 2023 14:07

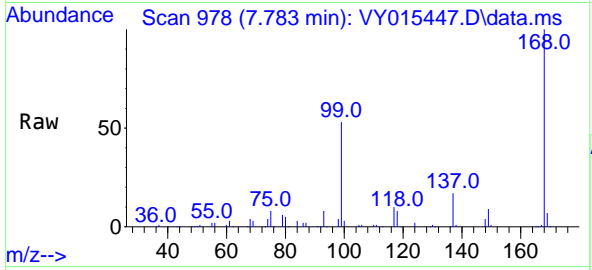
Tgt Ion:113 Resp: 77450  
 Ion Ratio Lower Upper  
 113 100  
 111 103.3 81.3 121.9  
 192 19.2 16.9 25.3



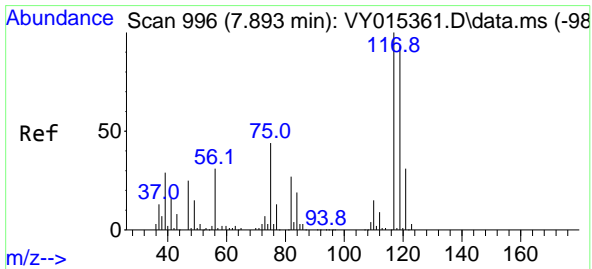
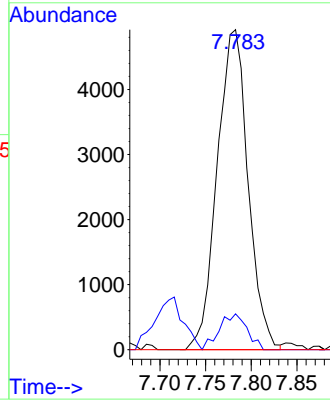
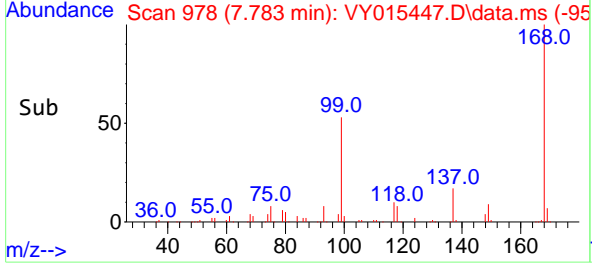


#36  
 1,1-Dichloropropene  
 Concen: 4.713 ug/l  
 RT: 7.783 min Scan# 91  
 Delta R.T. -0.128 min  
 Lab File: VY015447.D  
 Acq: 06 Sep 2023 14:07

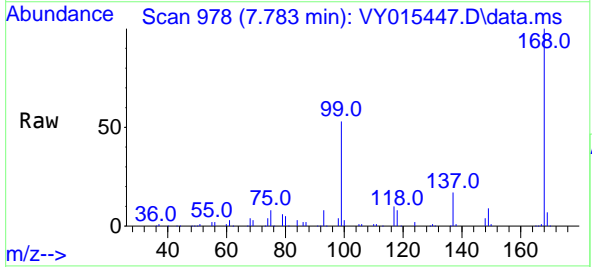
Instrument : MSVOA\_Y  
 ClientSampleId : WC-1



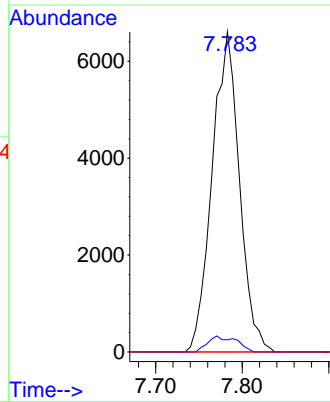
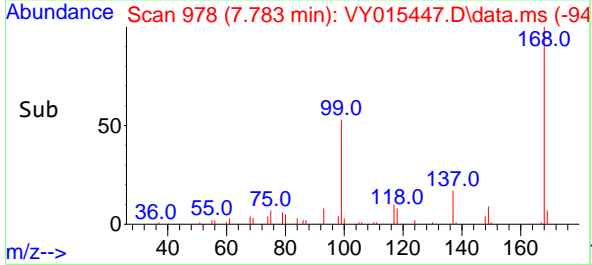
Tgt Ion: 75 Resp: 11574  
 Ion Ratio Lower Upper  
 75 100  
 110 10.0 17.8 53.5#  
 77 0.0 24.4 36.6#

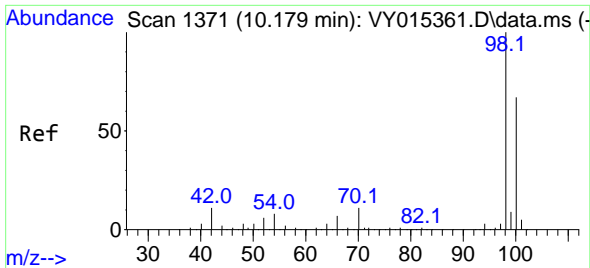


#38  
 Carbon Tetrachloride  
 Concen: 5.698 ug/l  
 RT: 7.783 min Scan# 978  
 Delta R.T. -0.110 min  
 Lab File: VY015447.D  
 Acq: 06 Sep 2023 14:07



Tgt Ion: 117 Resp: 14452  
 Ion Ratio Lower Upper  
 117 100  
 119 3.8 76.4 114.6#  
 121 0.0 25.8 38.6#

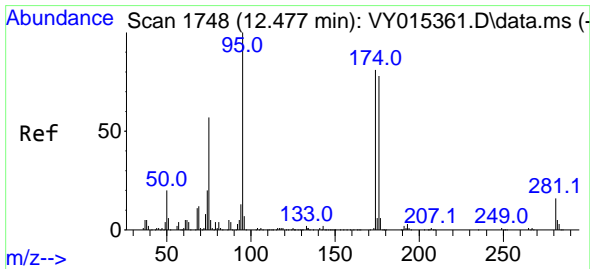
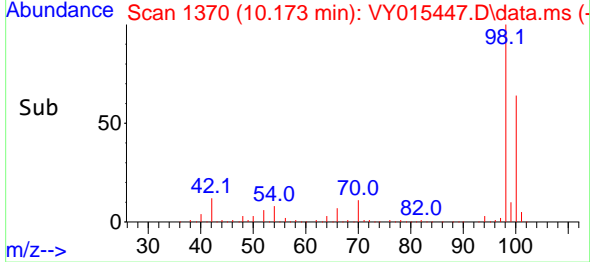
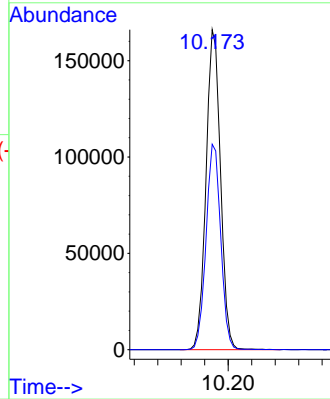
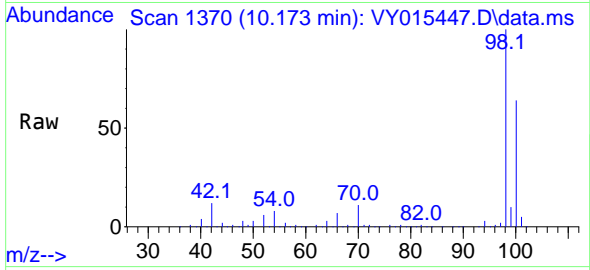




#50  
 Toluene-d8  
 Concen: 56.125 ug/l  
 RT: 10.173 min Scan# 11  
 Delta R.T. -0.006 min  
 Lab File: VY015447.D  
 Acq: 06 Sep 2023 14:07

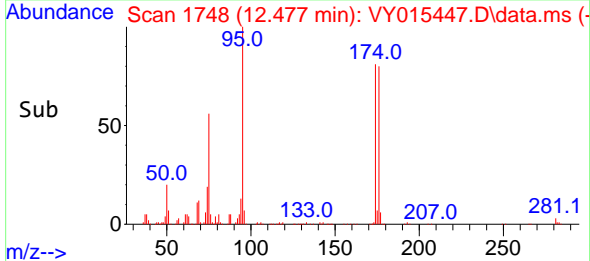
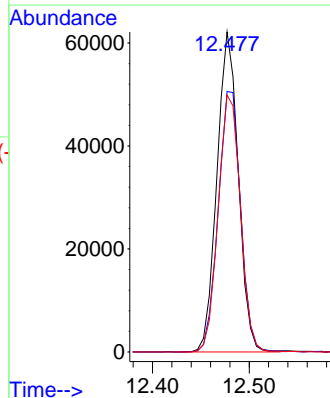
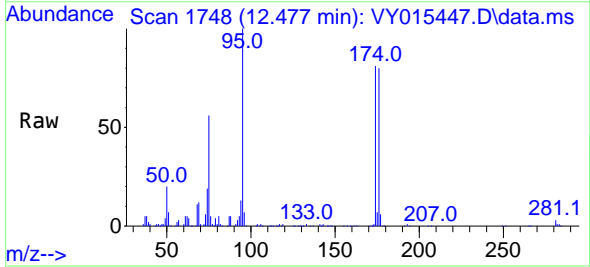
Instrument :  
 MSVOA\_Y  
 ClientSampleId :  
 WC-1

Tgt Ion: 98 Resp: 284271  
 Ion Ratio Lower Upper  
 98 100  
 100 65.1 50.1 75.1

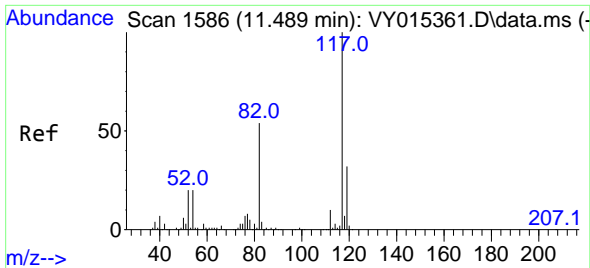


#62  
 4-Bromofluorobenzene  
 Concen: 50.606 ug/l  
 RT: 12.477 min Scan# 1748  
 Delta R.T. 0.000 min  
 Lab File: VY015447.D  
 Acq: 06 Sep 2023 14:07

Tgt Ion: 95 Resp: 95154  
 Ion Ratio Lower Upper  
 95 100  
 174 85.2 0.0 178.2  
 176 83.5 0.0 173.8

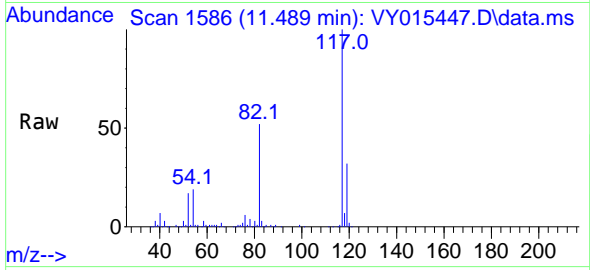




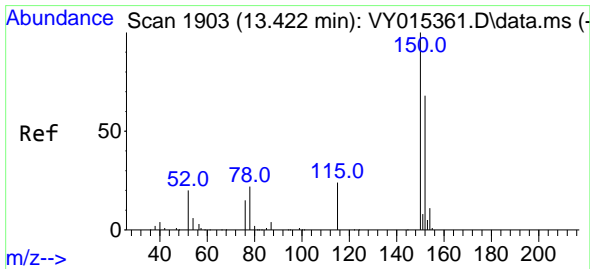
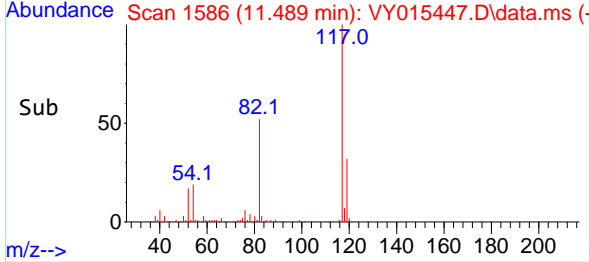
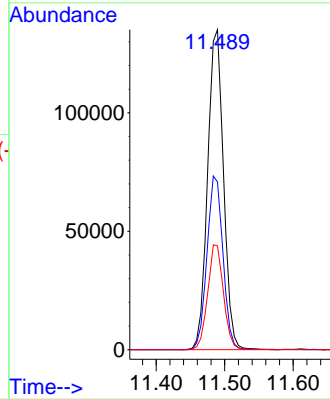


#63  
 Chlorobenzene-d5  
 Concen: 50.000 ug/l  
 RT: 11.489 min Scan# 11  
 Delta R.T. 0.000 min  
 Lab File: VY015447.D  
 Acq: 06 Sep 2023 14:07

Instrument :  
 MSVOA\_Y  
 ClientSampleId :  
 WC-1

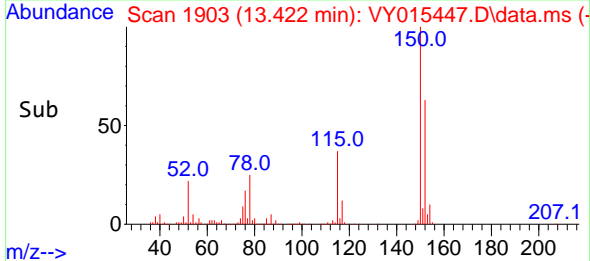
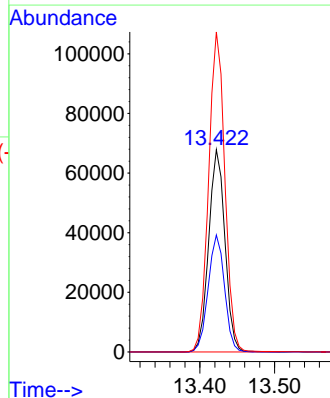
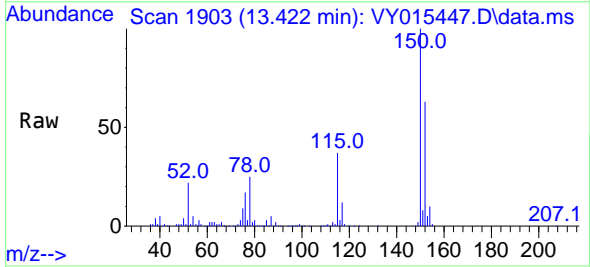


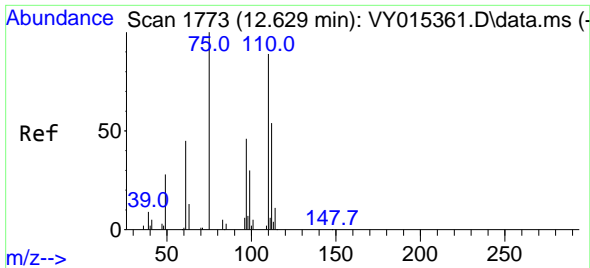
Tgt Ion:117 Resp: 218468  
 Ion Ratio Lower Upper  
 117 100  
 82 52.4 43.4 65.0  
 119 32.5 26.3 39.5



#72  
 1,4-Dichlorobenzene-d4  
 Concen: 50.000 ug/l  
 RT: 13.422 min Scan# 1903  
 Delta R.T. 0.000 min  
 Lab File: VY015447.D  
 Acq: 06 Sep 2023 14:07

Tgt Ion:152 Resp: 102572  
 Ion Ratio Lower Upper  
 152 100  
 115 58.1 28.8 86.5  
 150 158.2 0.0 348.8

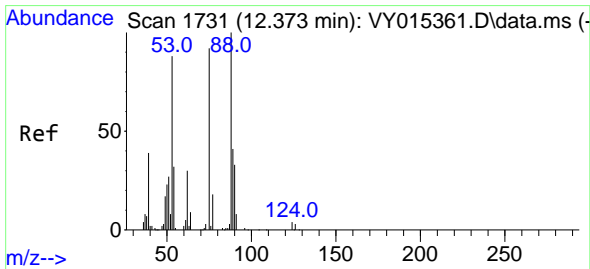
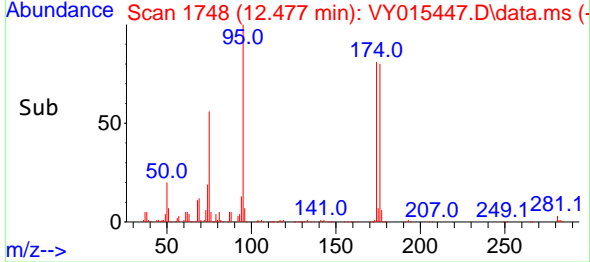
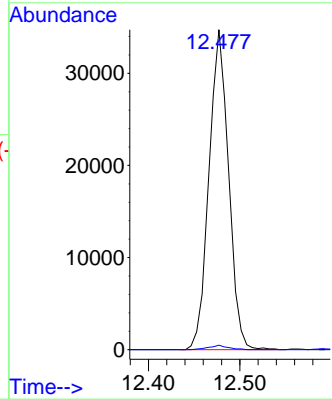
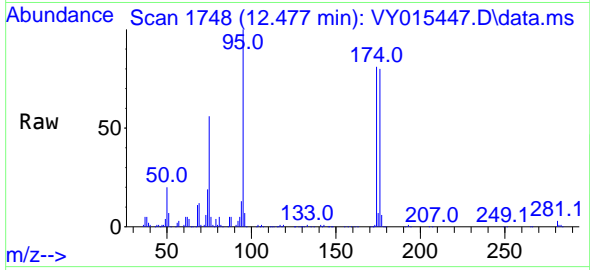




#76  
 1,2,3-Trichloropropane  
 Concen: 38.001 ug/l  
 RT: 12.477 min Scan# 1748  
 Delta R.T. -0.152 min  
 Lab File: VY015447.D  
 Acq: 06 Sep 2023 14:07

Instrument :  
 MSVOA\_Y  
 ClientSampleId :  
 WC-1

Tgt Ion: 75 Resp: 51689  
 Ion Ratio Lower Upper  
 75 100  
 77 1.4 0.0 0.0#



#81  
 trans-1,4-Dichloro-2-butene  
 Concen: 83.825 ug/l  
 RT: 12.477 min Scan# 1748  
 Delta R.T. 0.098 min  
 Lab File: VY015447.D  
 Acq: 06 Sep 2023 14:07

Tgt Ion: 75 Resp: 51689  
 Ion Ratio Lower Upper  
 75 100  
 53 0.0 77.8 116.8#  
 89 0.1 37.4 56.0#

