

Data Path : Z:\voasrv\HPCHEM1\MSVOA\_Y\Data\VY090822\  
 Data File : VY010393.D  
 Acq On : 08 Sep 2022 14:14  
 Operator : KP/MD  
 Sample : VIBLK  
 Misc : 5.00g/5.0mL/MSVOA\_Y/SOIL  
 ALS Vial : 13 Sample Multiplier: 1

Instrument :  
 MSVOA\_Y  
 ClientSampleId :  
 VIBLK

Quant Time: Sep 08 16:24:37 2022  
 Quant Method : Z:\voasrv\HPCHEM1\MSVOA\_Y\methods\82Y090222S.M  
 Quant Title : SW846 8260  
 QLast Update : Fri Sep 02 16:41:46 2022  
 Response via : Initial Calibration

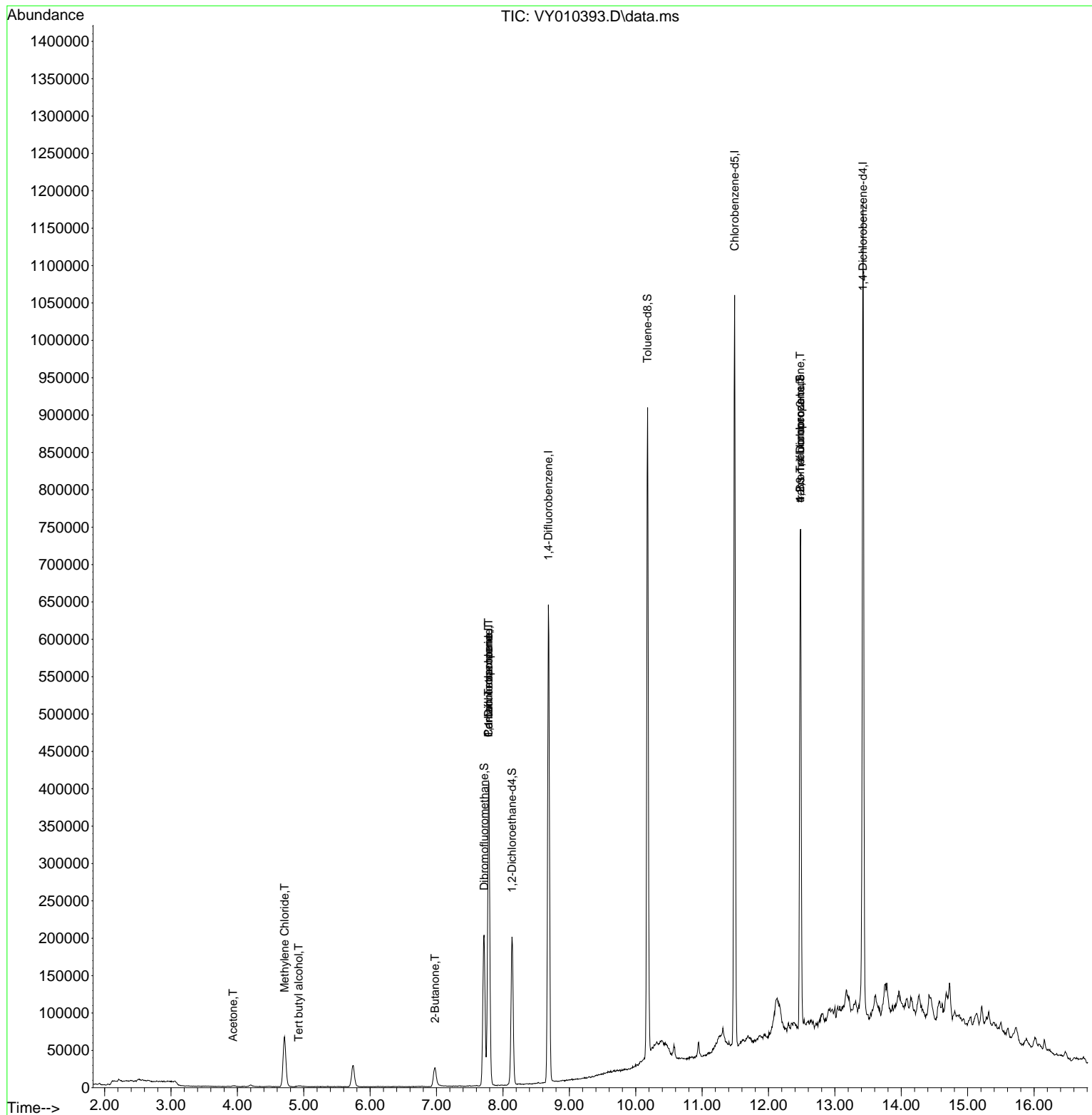
Compound	R.T.	QIon	Response	Conc	Units	Dev(Min)
-----						
Internal Standards						
1) Pentafluorobenzene	7.783	168	331612	50.000	ug/l	0.00
34) 1,4-Difluorobenzene	8.685	114	565622	50.000	ug/l	0.00
63) Chlorobenzene-d5	11.489	117	550990	50.000	ug/l	0.00
72) 1,4-Dichlorobenzene-d4	13.422	152	274431	50.000	ug/l	0.00
System Monitoring Compounds						
33) 1,2-Dichloroethane-d4	8.136	65	154969	45.575	ug/l	0.00
Spiked Amount	50.000	Range	50 - 163	Recovery	=	91.140%
35) Dibromofluoromethane	7.716	113	142940	37.961	ug/l	0.00
Spiked Amount	50.000	Range	54 - 147	Recovery	=	75.920%
50) Toluene-d8	10.179	98	567048	44.980	ug/l	0.00
Spiked Amount	50.000	Range	49 - 140	Recovery	=	89.960%
62) 4-Bromofluorobenzene	12.477	95	205467	39.352	ug/l	0.00
Spiked Amount	50.000	Range	25 - 144	Recovery	=	78.700%
Target Compounds						
					Qvalue	
5) Bromomethane	2.649	94	334	Below Cal	#	74
11) Tert butyl alcohol	4.923	59	814	2.001	ug/l #	77
16) Acetone	3.936	43	2250	2.647	ug/l	96
20) Methylene Chloride	4.710	84	50296	12.261	ug/l	87
25) 2-Butanone	6.978	43	1887	1.353	ug/l #	88
36) 1,1-Dichloropropene	7.783	75	23279	4.214	ug/l #	51
38) Carbon Tetrachloride	7.783	117	31163	5.473	ug/l #	16
58) 2-Chloroethyl Vinyl ether	9.788	63	94	Below Cal	#	1
76) 1,2,3-Trichloropropane	12.477	75	104830	32.099	ug/l #	100
81) trans-1,4-Dichloro-2-b...	12.477	75	104830	66.962	ug/l #	7
-----						

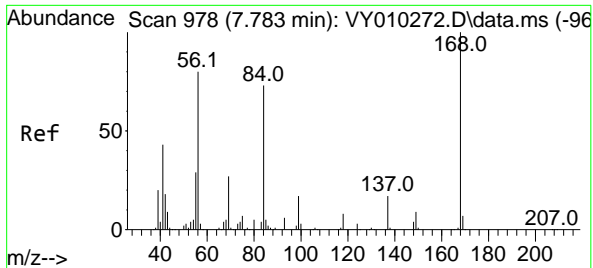
(#) = qualifier out of range (m) = manual integration (+) = signals summed

Data Path : Z:\voasrv\HPCHEM1\MSVOA\_Y\Data\VY090822\  
 Data File : VY010393.D  
 Acq On : 08 Sep 2022 14:14  
 Operator : KP/MD  
 Sample : VIBLK  
 Misc : 5.00g/5.0mL/MSVOA\_Y/SOIL  
 ALS Vial : 13 Sample Multiplier: 1

Instrument :  
 MSVOA\_Y  
 ClientSampleId :  
 VIBLK

Quant Time: Sep 08 16:24:37 2022  
 Quant Method : Z:\voasrv\HPCHEM1\MSVOA\_Y\methods\82Y090222S.M  
 Quant Title : SW846 8260  
 QLast Update : Fri Sep 02 16:41:46 2022  
 Response via : Initial Calibration

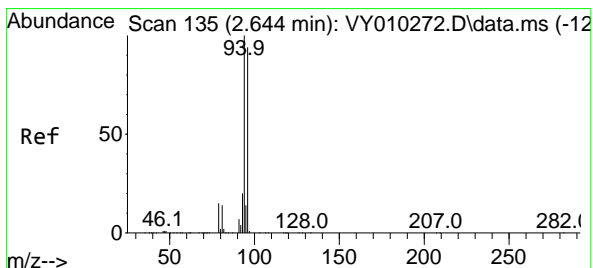
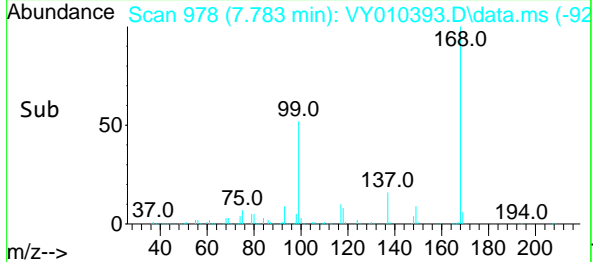
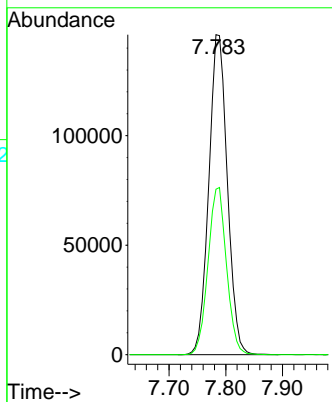
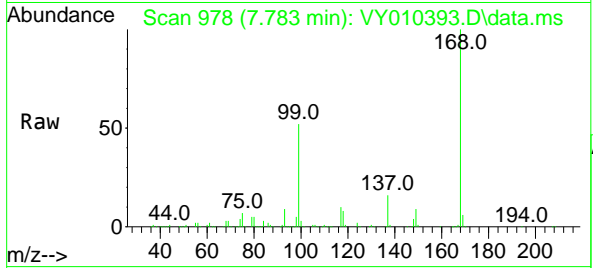




#1  
 Pentafluorobenzene  
 Concen: 50.000 ug/l  
 RT: 7.783 min Scan# 91  
 Delta R.T. -0.000 min  
 Lab File: VY010393.D  
 Acq: 08 Sep 2022 14:14

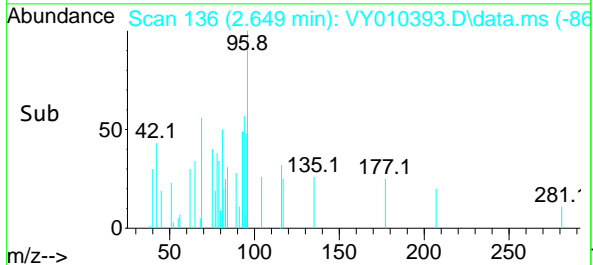
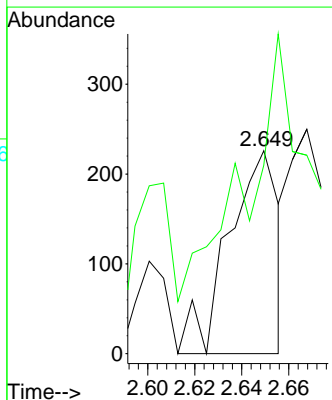
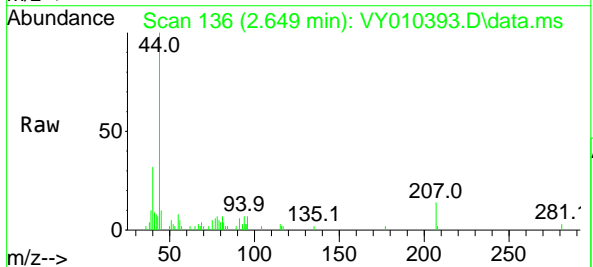
Instrument :  
 MSVOA\_Y  
 ClientSampleId :  
 VIBLK

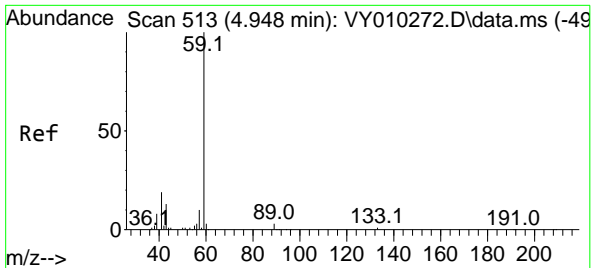
Tgt Ion:168 Resp: 331612  
 Ion Ratio Lower Upper  
 168 100  
 99 51.7 46.9 70.3



#5  
 Bromomethane  
 Concen: Below Cal  
 RT: 2.649 min Scan# 136  
 Delta R.T. 0.005 min  
 Lab File: VY010393.D  
 Acq: 08 Sep 2022 14:14

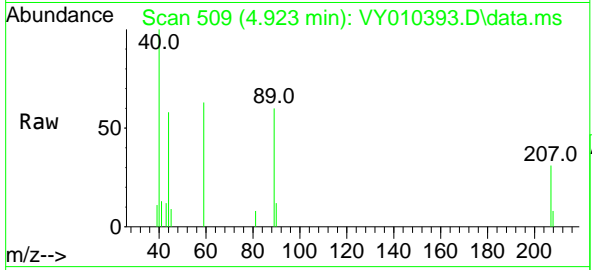
Tgt Ion: 94 Resp: 334  
 Ion Ratio Lower Upper  
 94 100  
 96 67.3 73.5 110.3#



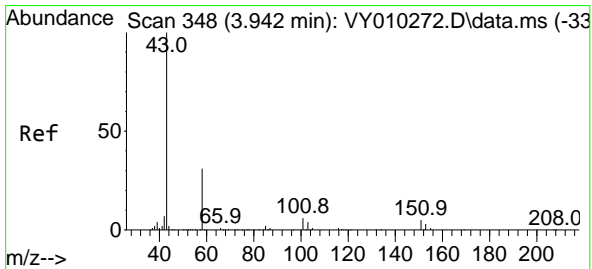
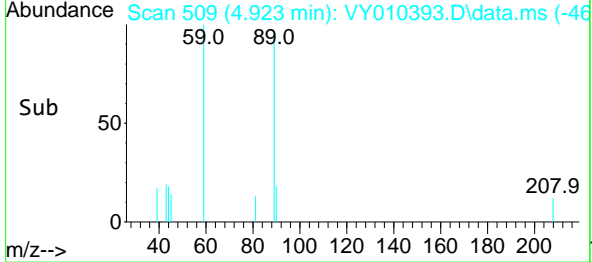
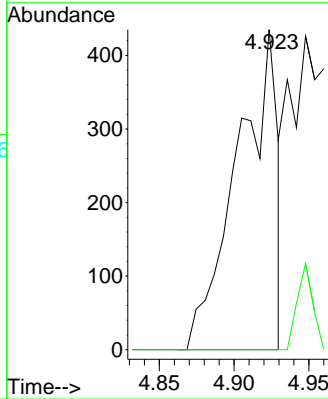


#11  
 Tert butyl alcohol  
 Concen: 2.001 ug/l  
 RT: 4.923 min Scan# 509  
 Delta R.T. -0.025 min  
 Lab File: VY010393.D  
 Acq: 08 Sep 2022 14:14

Instrument : MSVOA\_Y  
 ClientSampleId : VIBLK

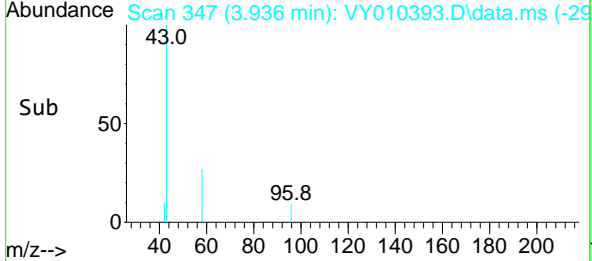
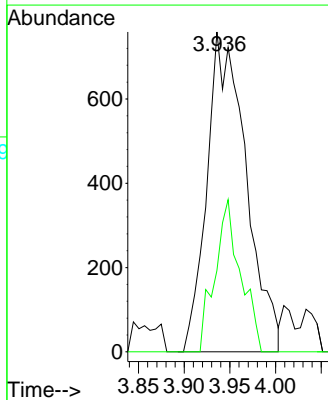
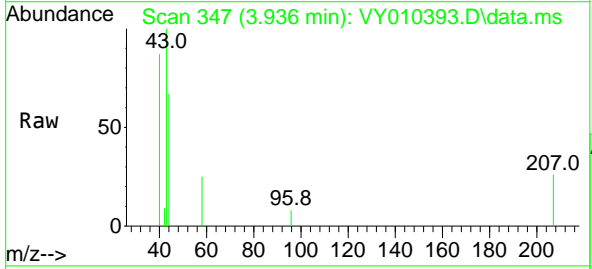


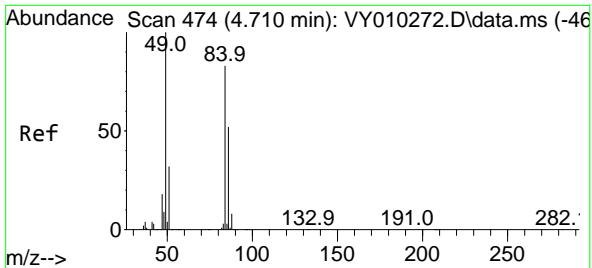
Tgt Ion: 59 Resp: 814  
 Ion Ratio Lower Upper  
 59 100  
 57 0.0 6.4 9.6#



#16  
 Acetone  
 Concen: 2.647 ug/l  
 RT: 3.936 min Scan# 347  
 Delta R.T. -0.006 min  
 Lab File: VY010393.D  
 Acq: 08 Sep 2022 14:14

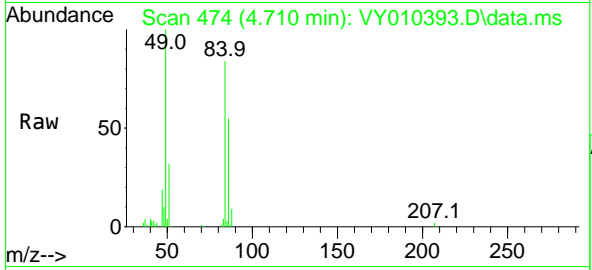
Tgt Ion: 43 Resp: 2250  
 Ion Ratio Lower Upper  
 43 100  
 58 25.4 22.0 33.0



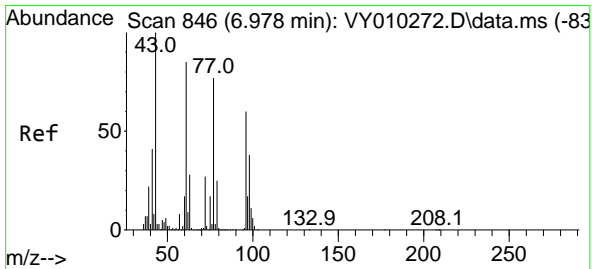
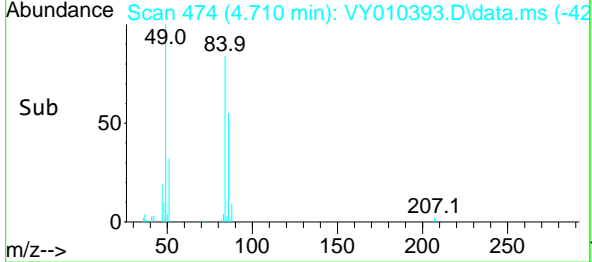
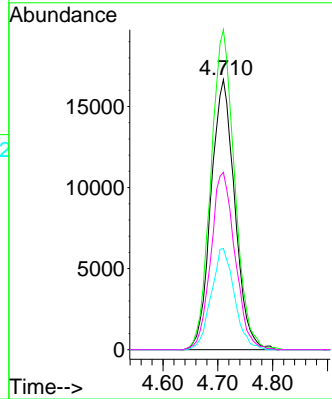


#20  
 Methylene Chloride  
 Concen: 12.261 ug/l  
 RT: 4.710 min Scan# 41  
 Delta R.T. 0.000 min  
 Lab File: VY010393.D  
 Acq: 08 Sep 2022 14:14

Instrument :  
 MSVOA\_Y  
 ClientSampleId :  
 VIBLK

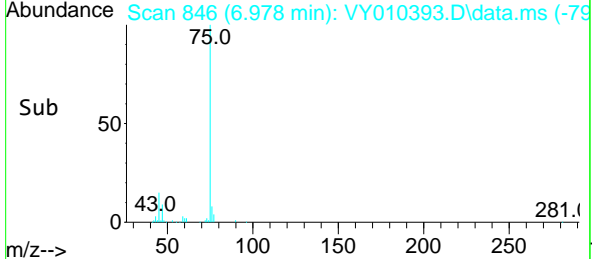
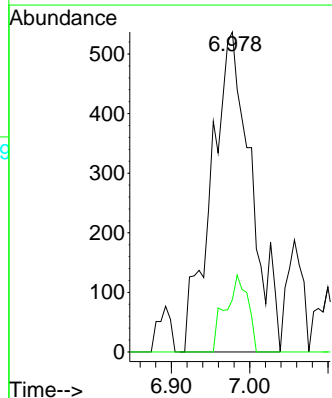
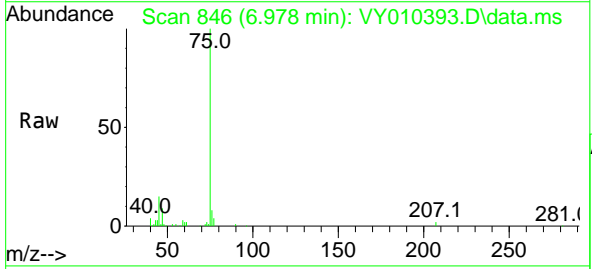


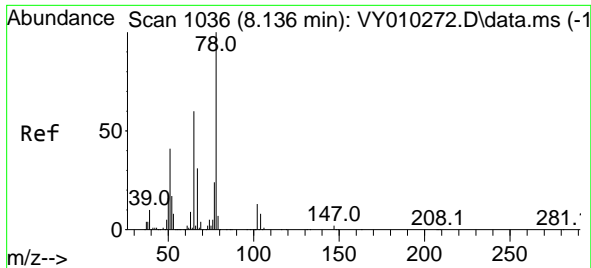
Tgt Ion: 84 Resp: 50296  
 Ion Ratio Lower Upper  
 84 100  
 49 118.5 114.4 171.6  
 51 37.5 35.3 52.9  
 86 65.7 53.7 80.5



#25  
 2-Butanone  
 Concen: 1.353 ug/l  
 RT: 6.978 min Scan# 846  
 Delta R.T. -0.000 min  
 Lab File: VY010393.D  
 Acq: 08 Sep 2022 14:14

Tgt Ion: 43 Resp: 1887  
 Ion Ratio Lower Upper  
 43 100  
 72 16.4 17.7 26.5#

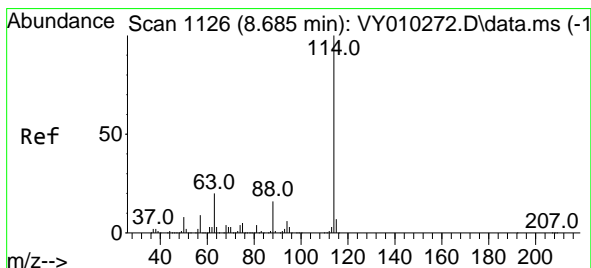
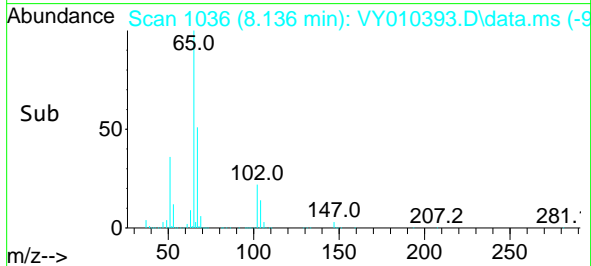
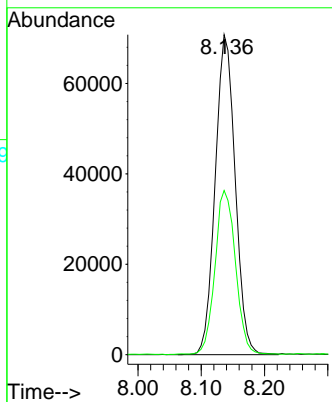
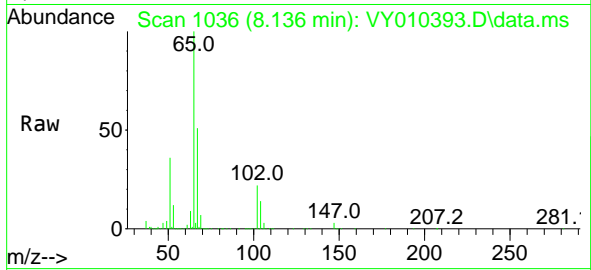




#33  
 1,2-Dichloroethane-d4  
 Concen: 45.575 ug/l  
 RT: 8.136 min Scan# 1036  
 Delta R.T. 0.000 min  
 Lab File: VY010393.D  
 Acq: 08 Sep 2022 14:14

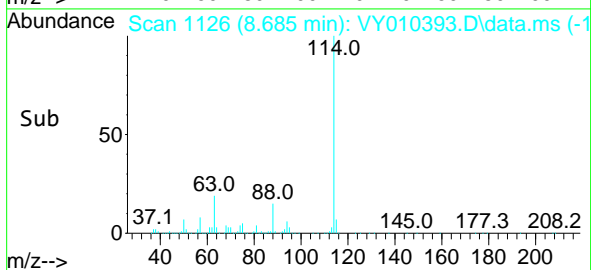
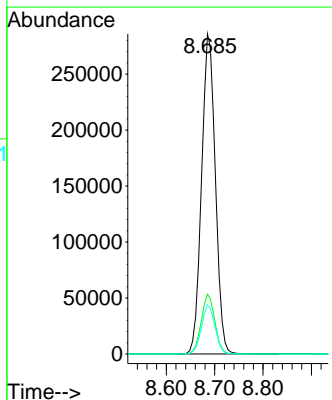
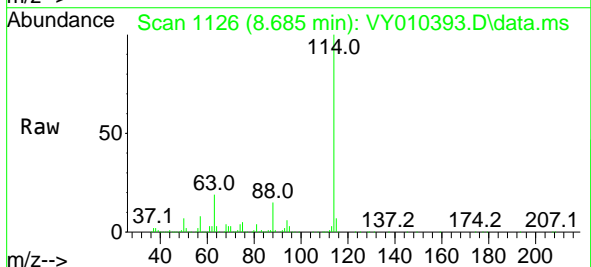
Instrument : MSVOA\_Y  
 ClientSampleId : VIBLK

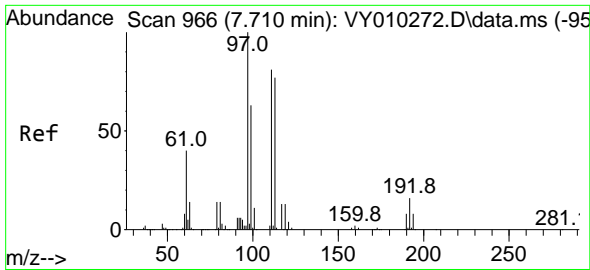
Tgt Ion: 65 Resp: 154969  
 Ion Ratio Lower Upper  
 65 100  
 67 52.3 0.0 99.4



#34  
 1,4-Difluorobenzene  
 Concen: 50.000 ug/l  
 RT: 8.685 min Scan# 1126  
 Delta R.T. -0.000 min  
 Lab File: VY010393.D  
 Acq: 08 Sep 2022 14:14

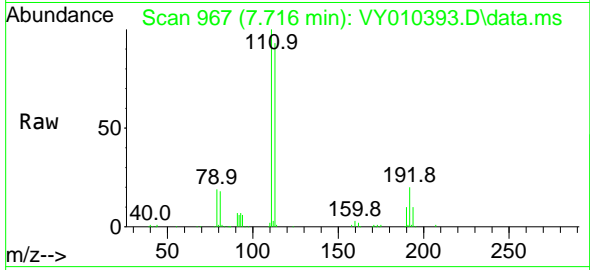
Tgt Ion:114 Resp: 565622  
 Ion Ratio Lower Upper  
 114 100  
 63 18.7 0.0 43.2  
 88 15.3 0.0 31.8



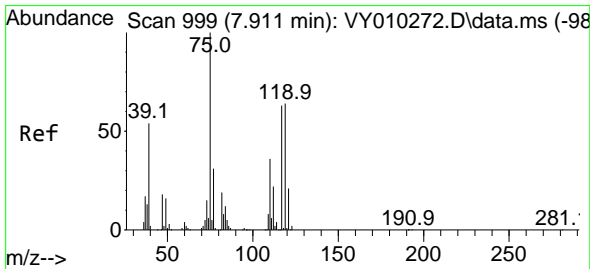
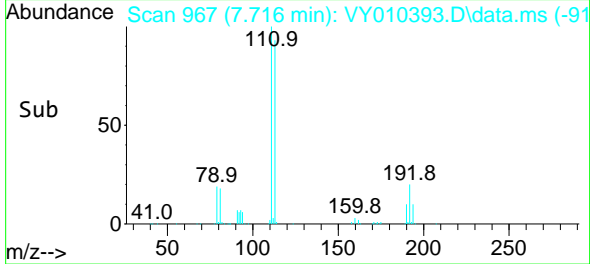
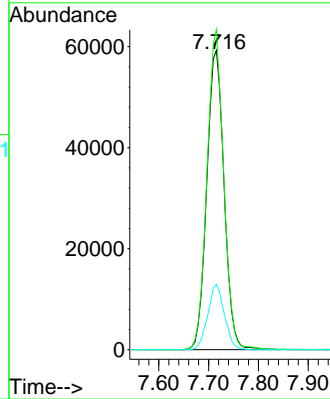


#35  
 Dibromofluoromethane  
 Concen: 37.961 ug/l  
 RT: 7.716 min Scan# 90  
 Delta R.T. 0.006 min  
 Lab File: VY010393.D  
 Acq: 08 Sep 2022 14:14

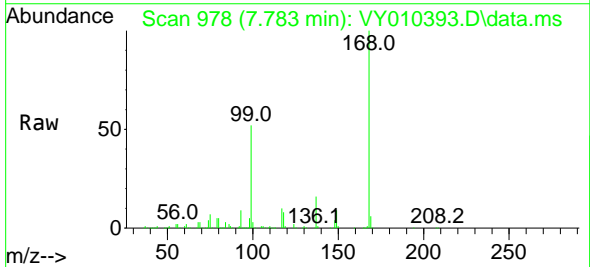
Instrument :  
 MSVOA\_Y  
 ClientSampleId :  
 VIBLK



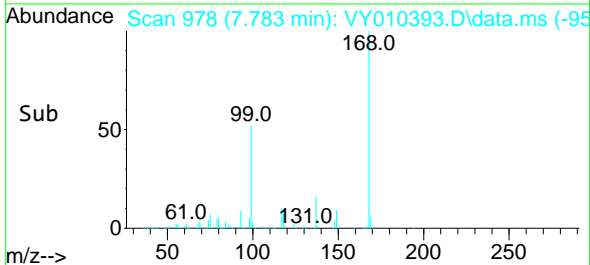
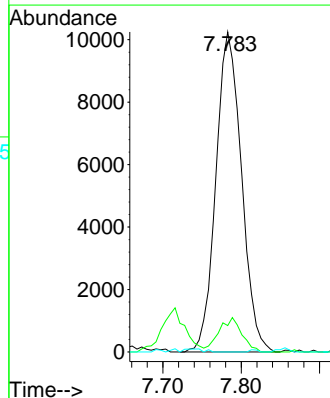
Tgt Ion:113 Resp: 142940  
 Ion Ratio Lower Upper  
 113 100  
 111 104.0 82.6 124.0  
 192 21.0 17.6 26.4

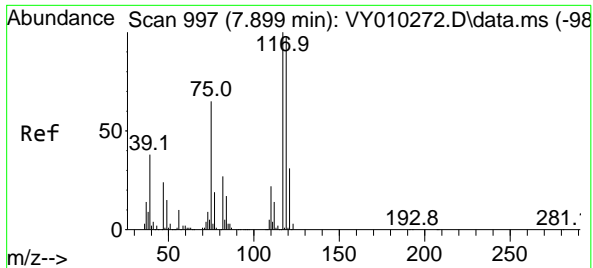


#36  
 1,1-Dichloropropene  
 Concen: 4.214 ug/l  
 RT: 7.783 min Scan# 978  
 Delta R.T. -0.128 min  
 Lab File: VY010393.D  
 Acq: 08 Sep 2022 14:14



Tgt Ion: 75 Resp: 23279  
 Ion Ratio Lower Upper  
 75 100  
 110 9.6 17.1 51.2#  
 77 0.0 24.4 36.6#

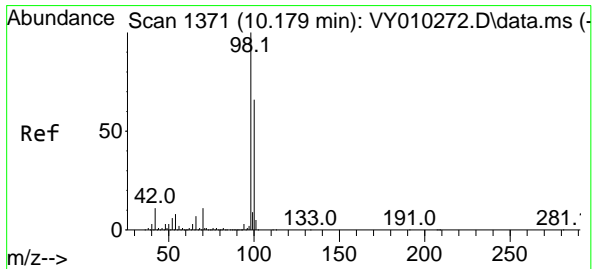
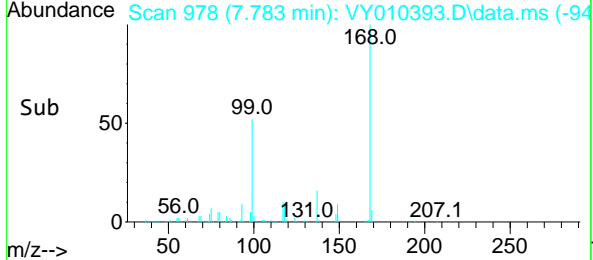
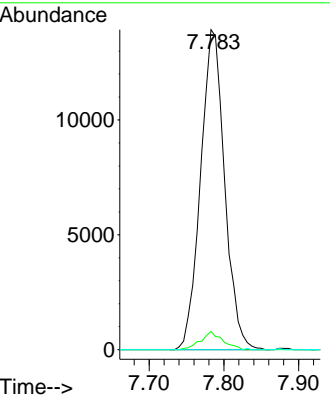
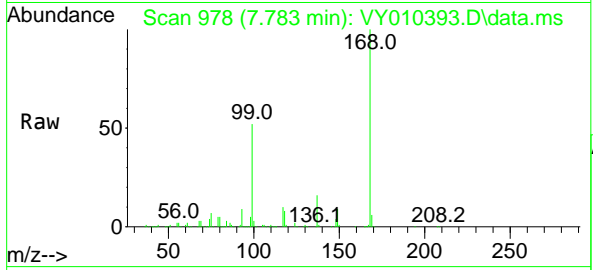




#38  
 Carbon Tetrachloride  
 Concen: 5.473 ug/l  
 RT: 7.783 min Scan# 91  
 Delta R.T. -0.116 min  
 Lab File: VY010393.D  
 Acq: 08 Sep 2022 14:14

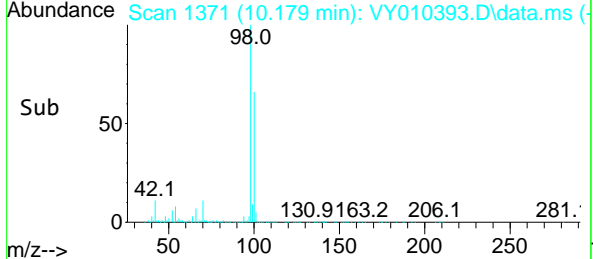
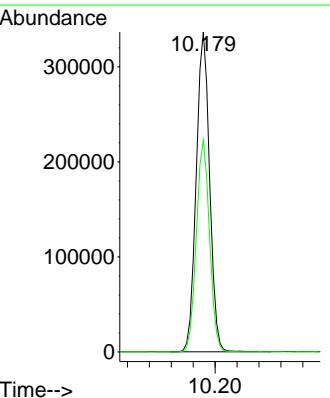
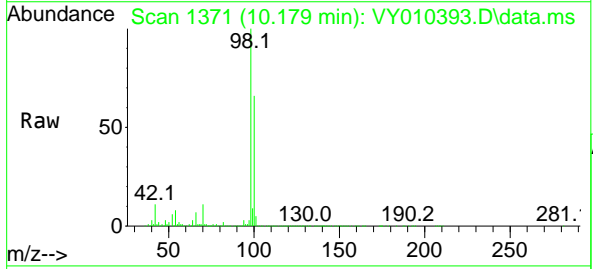
Instrument : MSVOA\_Y  
 ClientSampleId : VIBLK

Tgt Ion	Resp	Lower	Upper
117	31163		
119	5.7	77.9	116.9#
121	0.0	24.8	37.2#

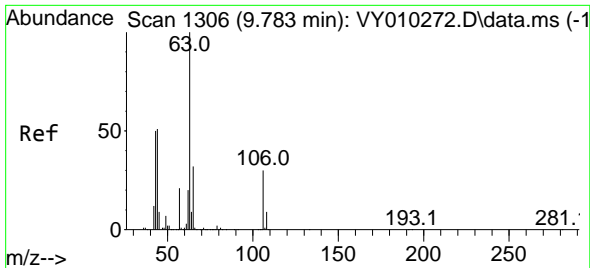


#50  
 Toluene-d8  
 Concen: 44.980 ug/l  
 RT: 10.179 min Scan# 1371  
 Delta R.T. -0.000 min  
 Lab File: VY010393.D  
 Acq: 08 Sep 2022 14:14

Tgt Ion	Resp	Lower	Upper
98	567048		
100	65.5	50.2	75.2



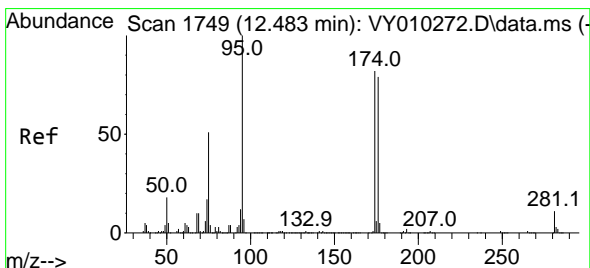
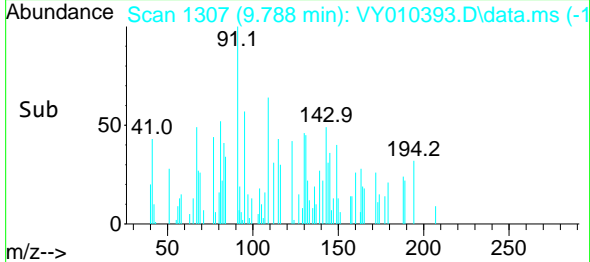
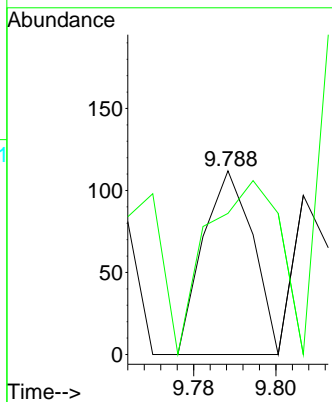
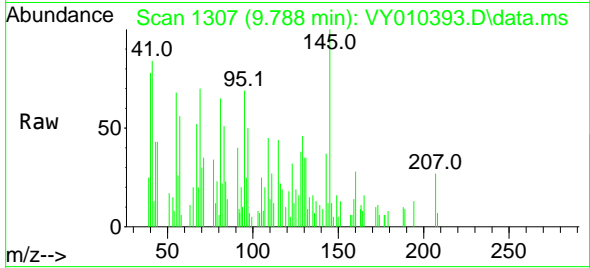




#58  
 2-Chloroethyl Vinyl ether  
 Concen: Below Cal  
 RT: 9.788 min Scan# 11  
 Delta R.T. 0.005 min  
 Lab File: VY010393.D  
 Acq: 08 Sep 2022 14:14

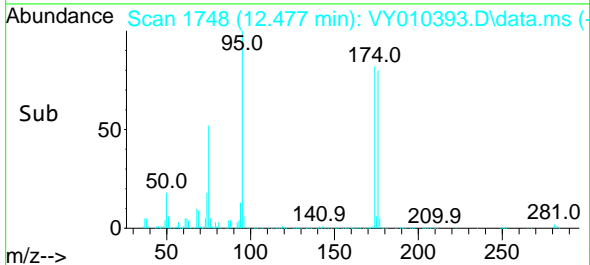
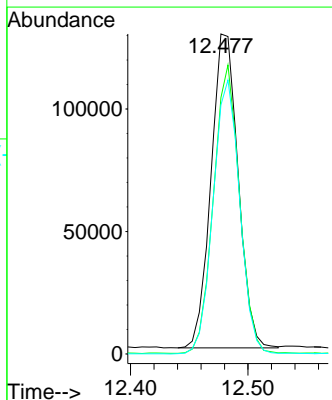
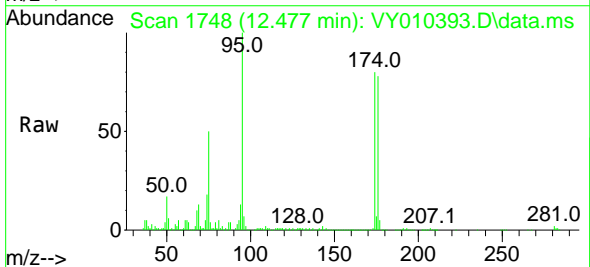
Instrument :  
 MSVOA\_Y  
 ClientSampleId :  
 VIBLK

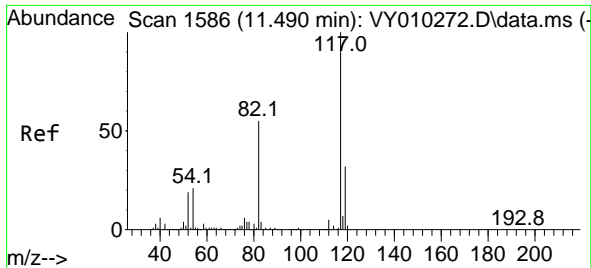
Tgt Ion: 63 Resp: 94  
 Ion Ratio Lower Upper  
 63 100  
 106 138.3 21.5 32.3#



#62  
 4-Bromofluorobenzene  
 Concen: 39.352 ug/l  
 RT: 12.477 min Scan# 1748  
 Delta R.T. -0.006 min  
 Lab File: VY010393.D  
 Acq: 08 Sep 2022 14:14

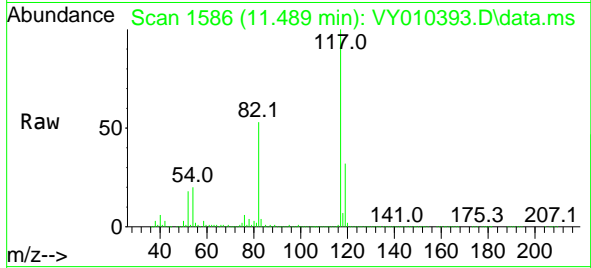
Tgt Ion: 95 Resp: 205467  
 Ion Ratio Lower Upper  
 95 100  
 174 87.8 0.0 177.0  
 176 85.9 0.0 175.8





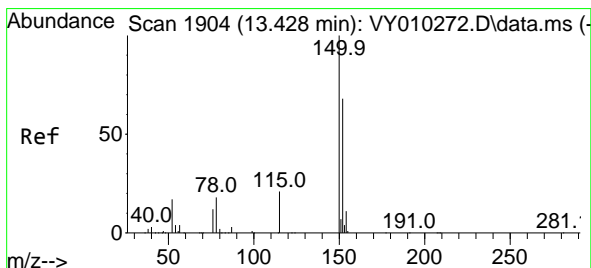
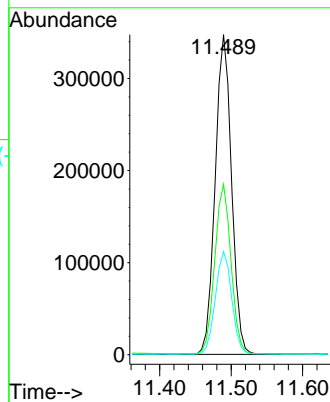
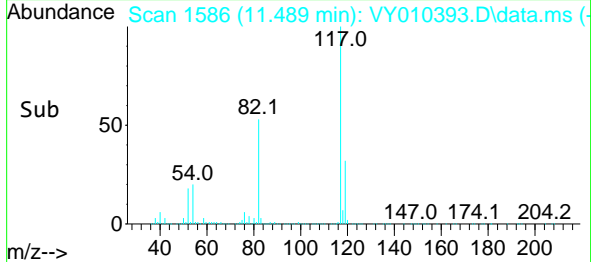
#63  
 Chlorobenzene-d5  
 Concen: 50.000 ug/l  
 RT: 11.489 min Scan# 11  
 Delta R.T. -0.001 min  
 Lab File: VY010393.D  
 Acq: 08 Sep 2022 14:14

Instrument :  
 MSVOA\_Y  
 ClientSampleId :  
 VIBLK

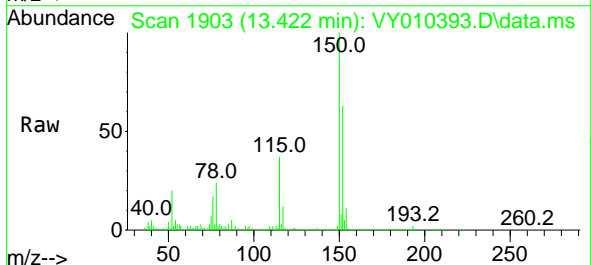


Tgt Ion:117 Resp: 550990

Ion	Ratio	Lower	Upper
117	100		
82	53.0	43.0	64.4
119	32.1	25.4	38.0

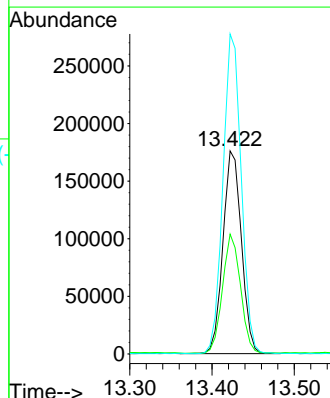
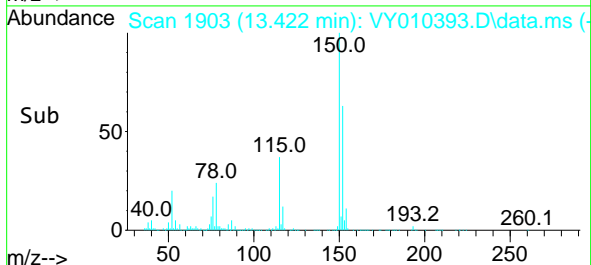


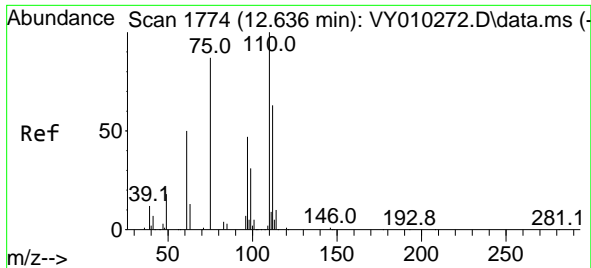
#72  
 1,4-Dichlorobenzene-d4  
 Concen: 50.000 ug/l  
 RT: 13.422 min Scan# 1903  
 Delta R.T. -0.006 min  
 Lab File: VY010393.D  
 Acq: 08 Sep 2022 14:14



Tgt Ion:152 Resp: 274431

Ion	Ratio	Lower	Upper
152	100		
115	56.9	28.2	84.7
150	156.0	0.0	347.6

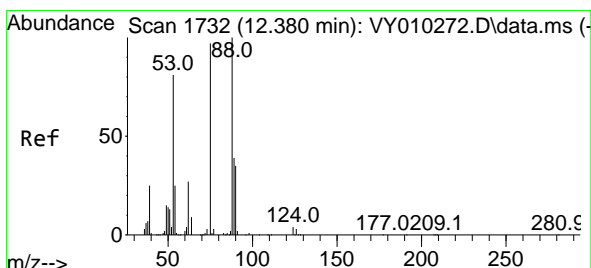
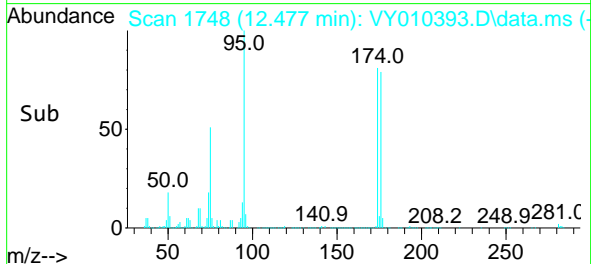
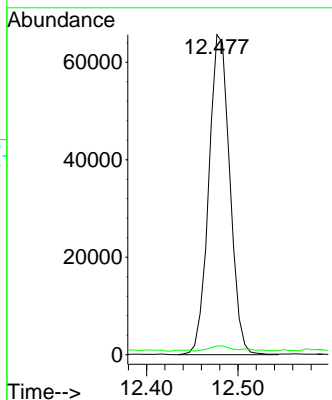
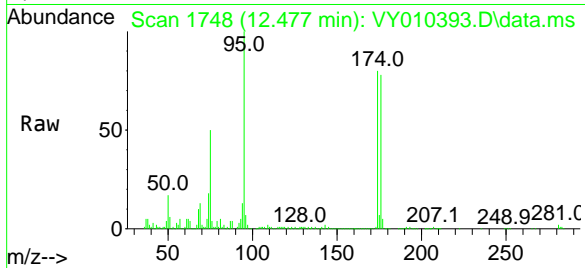




#76  
 1,2,3-Trichloropropane  
 Concen: 32.099 ug/l  
 RT: 12.477 min Scan# 1748  
 Delta R.T. -0.159 min  
 Lab File: VY010393.D  
 Acq: 08 Sep 2022 14:14

Instrument : MSVOA\_Y  
 ClientSampleId : VIBLK

Tgt Ion: 75 Resp: 104830  
 Ion Ratio Lower Upper  
 75 100  
 77 1.7 0.0 0.0#



#81  
 trans-1,4-Dichloro-2-butene  
 Concen: 66.962 ug/l  
 RT: 12.477 min Scan# 1748  
 Delta R.T. 0.097 min  
 Lab File: VY010393.D  
 Acq: 08 Sep 2022 14:14

Tgt Ion: 75 Resp: 104830  
 Ion Ratio Lower Upper  
 75 100  
 53 0.0 85.3 127.9#  
 89 0.2 37.0 55.4#

