

Data Path : Z:\voasrv\HPCHEM1\MSVOA\_Y\Data\VY091123\  
 Data File : VY015499.D  
 Acq On : 11 Sep 2023 20:02  
 Operator : SY/MD  
 Sample : 04374-09  
 Misc : 9.24g/5.0mL/MSVOA\_Y/SOIL  
 ALS Vial : 21 Sample Multiplier: 1

Instrument :  
 MSVOA\_Y  
 ClientSampleId :

Quant Time: Sep 12 01:22:31 2023  
 Quant Method : Z:\voasrv\HPCHEM1\MSVOA\_Y\methods\82Y082923S.M  
 Quant Title : SW846 8260  
 QLast Update : Thu Aug 31 20:01:47 2023  
 Response via : Initial Calibration

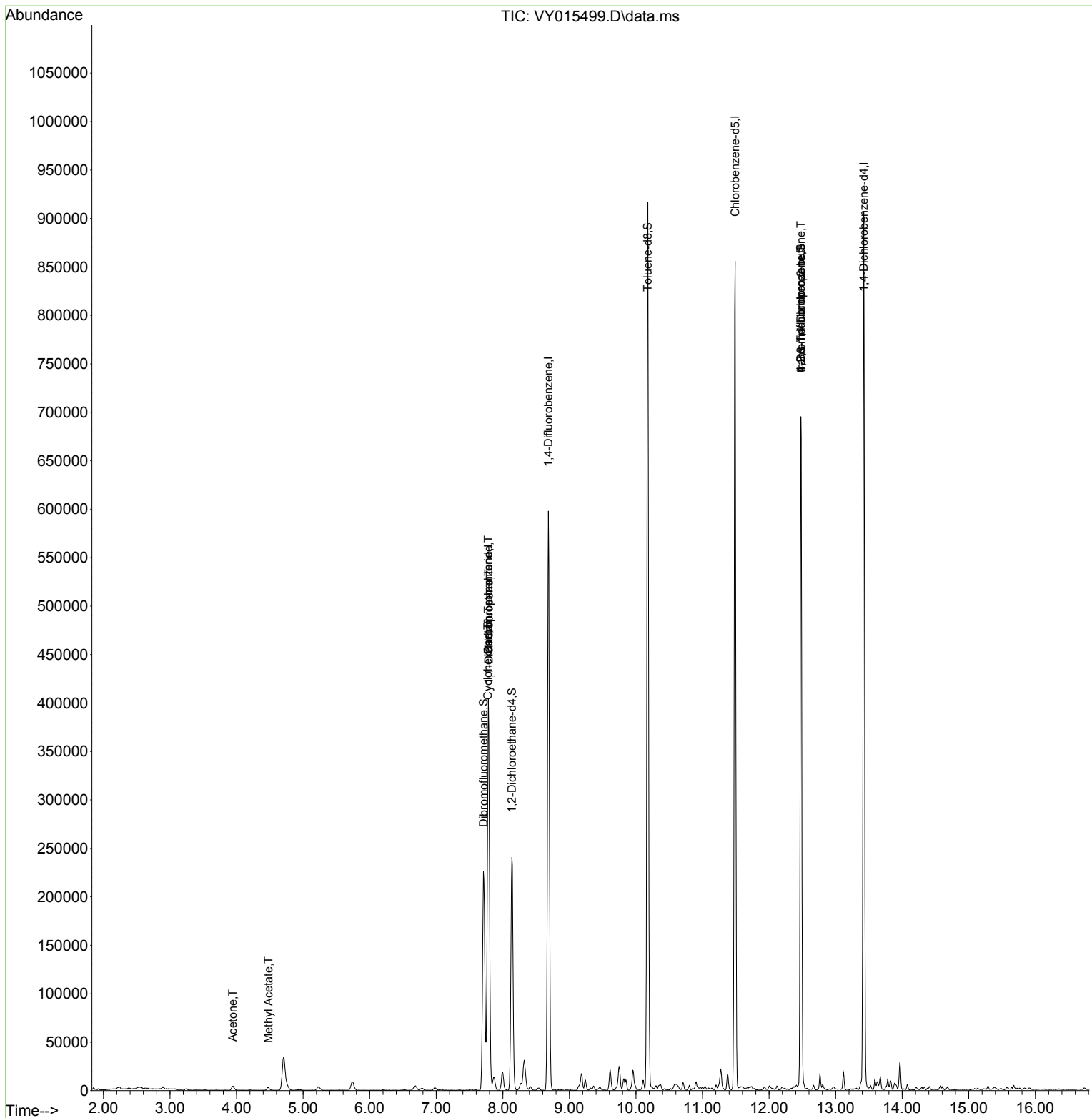
Compound	R.T.	QIon	Response	Conc	Units	Dev(Min)
-----						
Internal Standards						
1) Pentafluorobenzene	7.783	168	309752	50.000	ug/l	0.00
34) 1,4-Difluorobenzene	8.685	114	509203	50.000	ug/l	0.00
63) Chlorobenzene-d5	11.489	117	465499	50.000	ug/l	0.00
72) 1,4-Dichlorobenzene-d4	13.422	152	223509	50.000	ug/l	0.00
System Monitoring Compounds						
33) 1,2-Dichloroethane-d4	8.136	65	193804	58.366	ug/l	0.00
Spiked Amount	50.000	Range	50 - 163	Recovery	=	116.740%
35) Dibromofluoromethane	7.710	113	158840	54.158	ug/l	0.00
Spiked Amount	50.000	Range	54 - 147	Recovery	=	108.320%
50) Toluene-d8	10.179	98	596601	56.171	ug/l	0.00
Spiked Amount	50.000	Range	58 - 134	Recovery	=	112.340%
62) 4-Bromofluorobenzene	12.477	95	207703	52.677	ug/l	0.00
Spiked Amount	50.000	Range	30 - 143	Recovery	=	105.360%
Target Compounds						
					Qvalue	
11) Tert butyl alcohol	4.948	59	1559	Below Cal		99
16) Acetone	3.942	43	7263	5.240	ug/l	100
18) Methyl Acetate	4.478	43	5394	1.075	ug/l #	90
20) Methylene Chloride	4.704	84	26207	Below Cal		86
31) Cyclohexane	7.777	56	9017	1.529	ug/l #	20
36) 1,1-Dichloropropene	7.789	75	22626	4.394	ug/l #	50
38) Carbon Tetrachloride	7.783	117	29951	5.631	ug/l #	17
76) 1,2,3-Trichloropropane	12.477	75	111236	37.529	ug/l #	100
81) trans-1,4-Dichloro-2-b...	12.477	75	111236	82.786	ug/l #	11
-----						

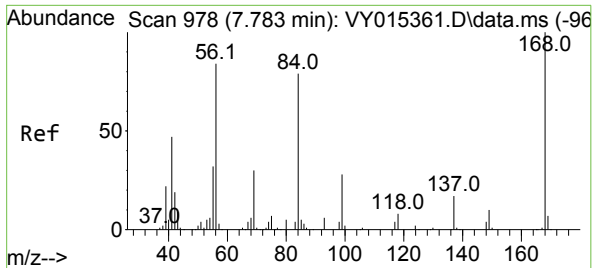
(#) = qualifier out of range (m) = manual integration (+) = signals summed

Data Path : Z:\voasrv\HPCHEM1\MSVOA\_Y\Data\VY091123\  
 Data File : VY015499.D  
 Acq On : 11 Sep 2023 20:02  
 Operator : SY/MD  
 Sample : 04374-09  
 Misc : 9.24g/5.0mL/MSVOA\_Y/SOIL  
 ALS Vial : 21 Sample Multiplier: 1

Instrument :  
 MSVOA\_Y  
 ClientSampleId :

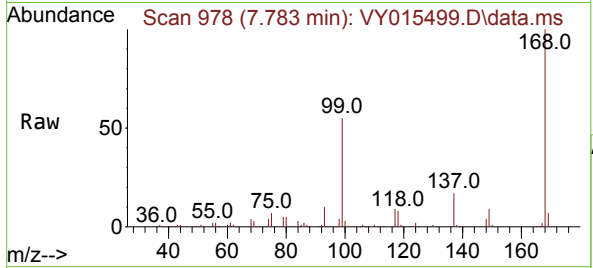
Quant Time: Sep 12 01:22:31 2023  
 Quant Method : Z:\voasrv\HPCHEM1\MSVOA\_Y\methods\82Y082923S.M  
 Quant Title : SW846 8260  
 QLast Update : Thu Aug 31 20:01:47 2023  
 Response via : Initial Calibration



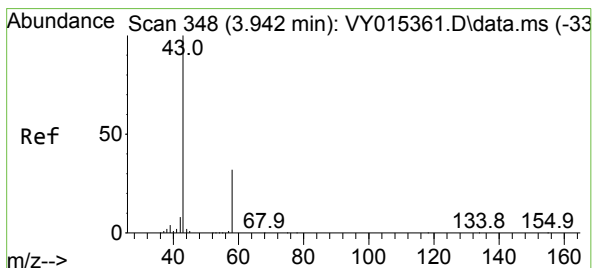
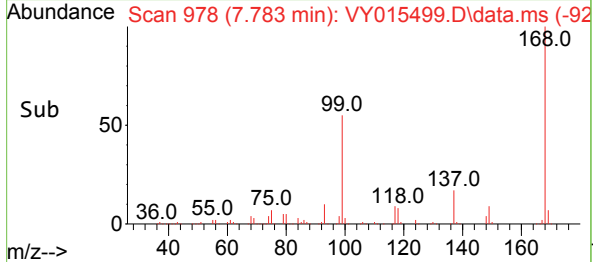
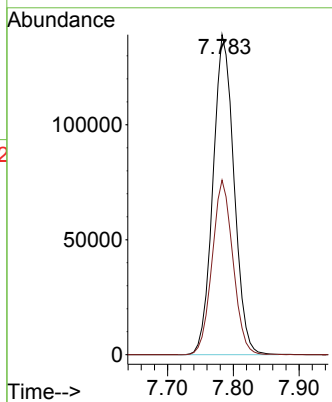


#1  
 Pentafluorobenzene  
 Concen: 50.000 ug/l  
 RT: 7.783 min Scan# 91  
 Delta R.T. -0.000 min  
 Lab File: VY015499.D  
 Acq: 11 Sep 2023 20:02

Instrument :  
 MSVOA\_Y  
 ClientSampleId :

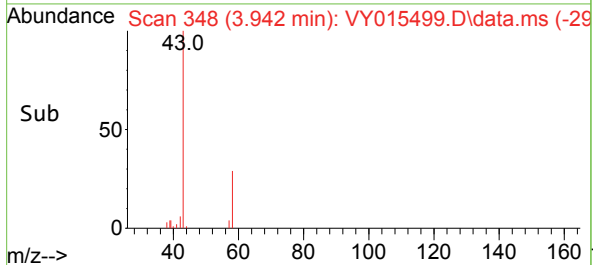
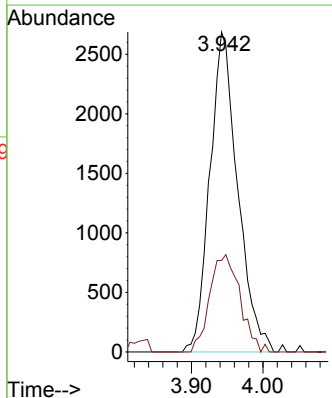
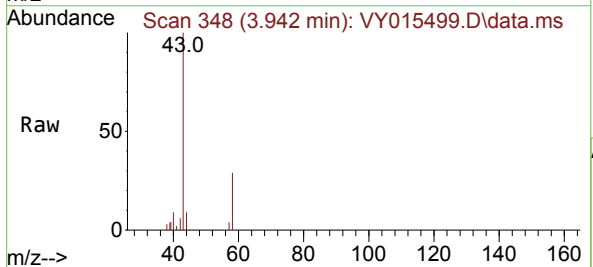


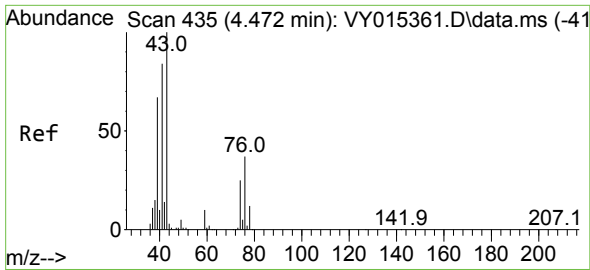
Tgt Ion:168 Resp: 309752  
 Ion Ratio Lower Upper  
 168 100  
 99 54.6 43.4 65.0



#16  
 Acetone  
 Concen: 5.240 ug/l  
 RT: 3.942 min Scan# 348  
 Delta R.T. -0.000 min  
 Lab File: VY015499.D  
 Acq: 11 Sep 2023 20:02

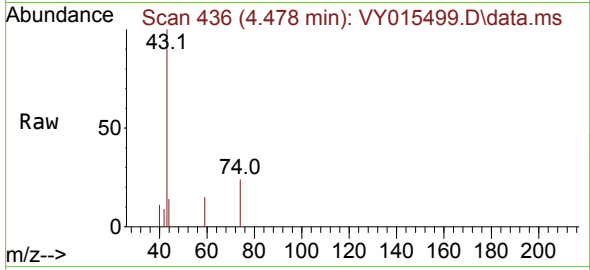
Tgt Ion: 43 Resp: 7263  
 Ion Ratio Lower Upper  
 43 100  
 58 28.6 22.7 34.1



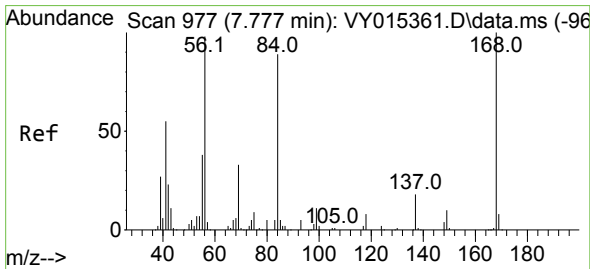
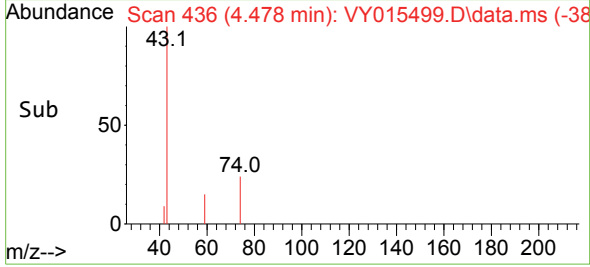
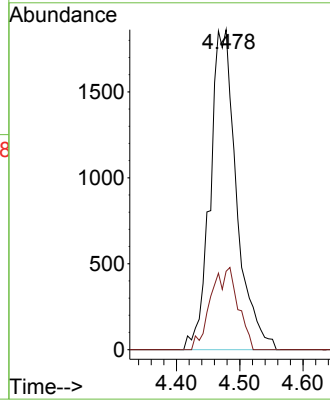


#18  
 Methyl Acetate  
 Concen: 1.075 ug/l  
 RT: 4.478 min Scan# 41  
 Delta R.T. 0.006 min  
 Lab File: VY015499.D  
 Acq: 11 Sep 2023 20:02

Instrument :  
 MSVOA\_Y  
 ClientSampleId :

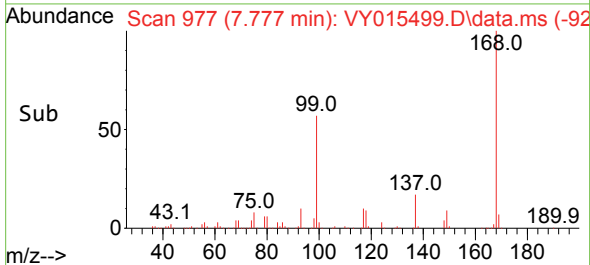
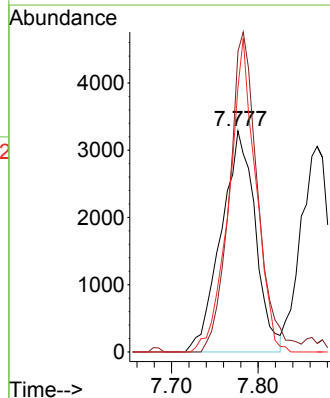
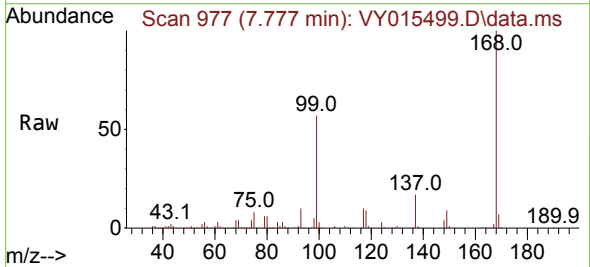


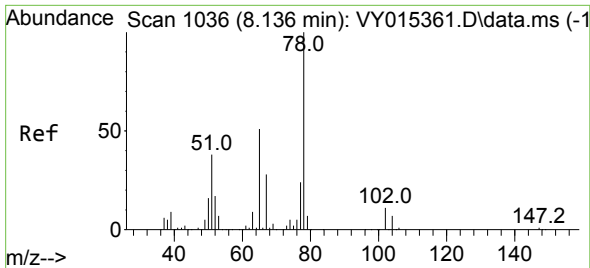
Tgt Ion: 43 Resp: 5394  
 Ion Ratio Lower Upper  
 43 100  
 74 26.5 17.4 26.0#



#31  
 Cyclohexane  
 Concen: 1.529 ug/l  
 RT: 7.777 min Scan# 977  
 Delta R.T. -0.006 min  
 Lab File: VY015499.D  
 Acq: 11 Sep 2023 20:02

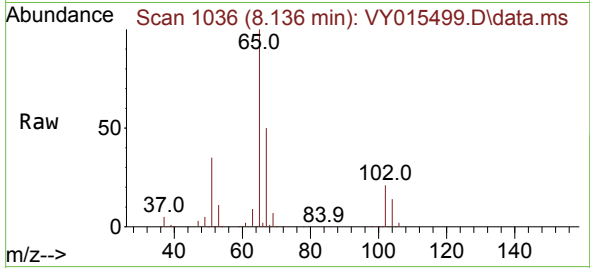
Tgt Ion: 56 Resp: 9017  
 Ion Ratio Lower Upper  
 56 100  
 69 136.0 27.8 41.6#  
 84 119.8 66.4 99.6#



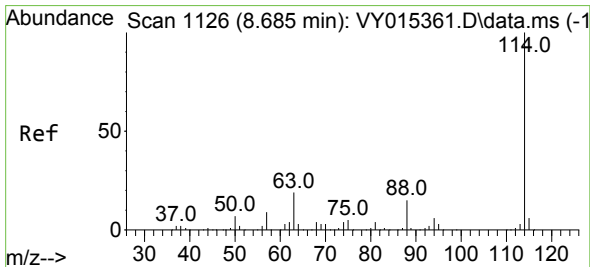
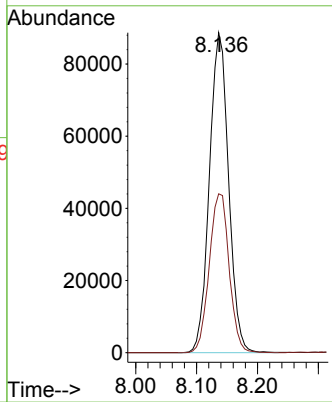
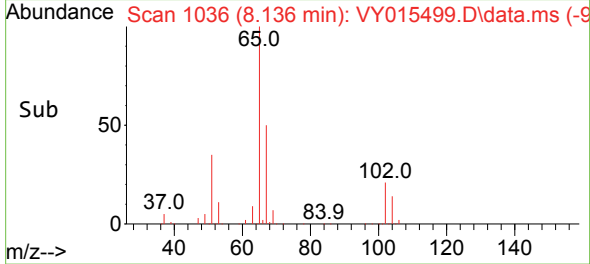


#33  
 1,2-Dichloroethane-d4  
 Concen: 58.366 ug/l  
 RT: 8.136 min Scan# 1036  
 Delta R.T. -0.000 min  
 Lab File: VY015499.D  
 Acq: 11 Sep 2023 20:02

Instrument : MSVOA\_Y  
 ClientSampleId :

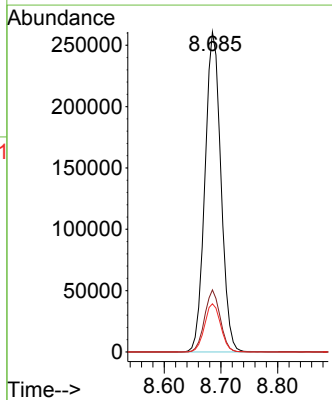
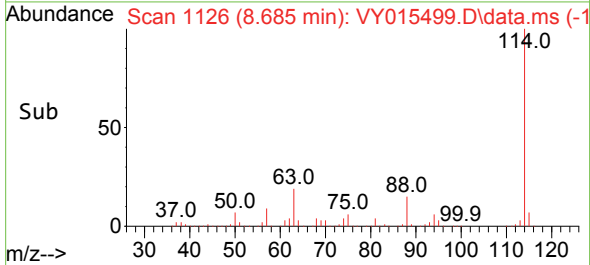
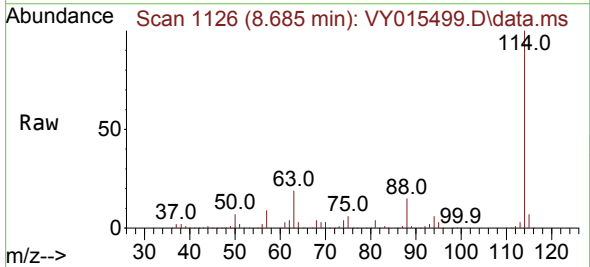


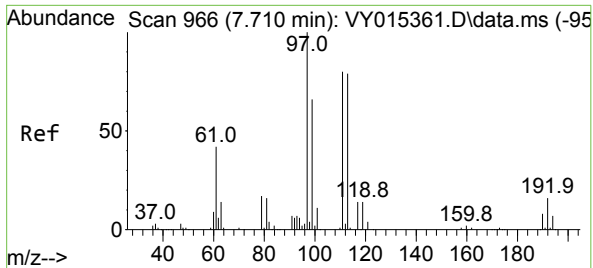
Tgt Ion: 65 Resp: 193804  
 Ion Ratio Lower Upper  
 65 100  
 67 51.5 0.0 101.8



#34  
 1,4-Difluorobenzene  
 Concen: 50.000 ug/l  
 RT: 8.685 min Scan# 1126  
 Delta R.T. -0.000 min  
 Lab File: VY015499.D  
 Acq: 11 Sep 2023 20:02

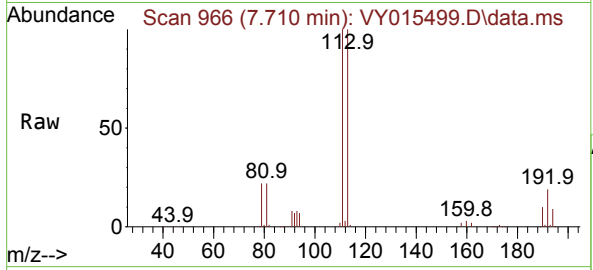
Tgt Ion: 114 Resp: 509203  
 Ion Ratio Lower Upper  
 114 100  
 63 19.4 0.0 42.4  
 88 15.0 0.0 30.6



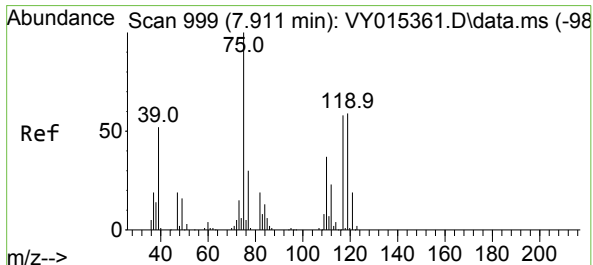
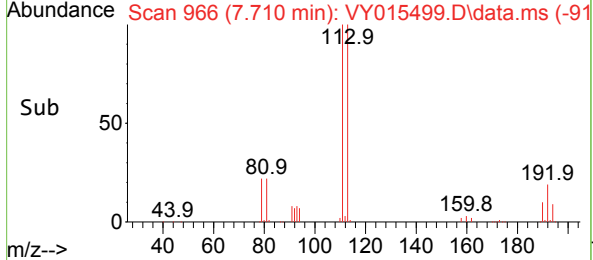
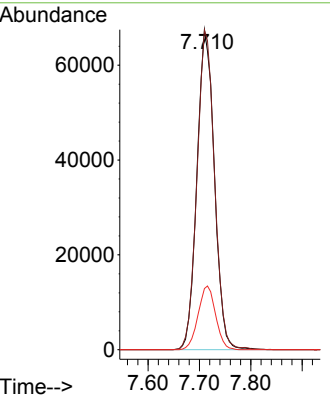


#35  
 Dibromofluoromethane  
 Concen: 54.158 ug/l  
 RT: 7.710 min Scan# 909  
 Delta R.T. -0.006 min  
 Lab File: VY015499.D  
 Acq: 11 Sep 2023 20:02

Instrument : MSVOA\_Y  
 ClientSampleId :

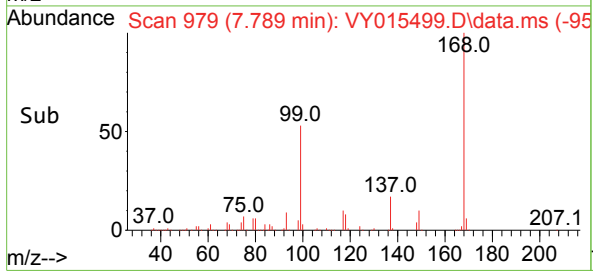
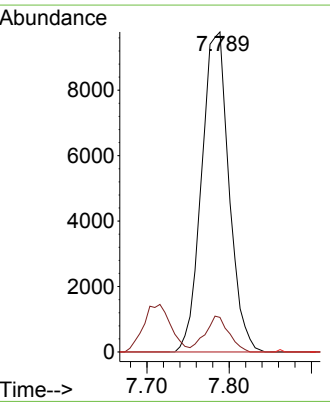
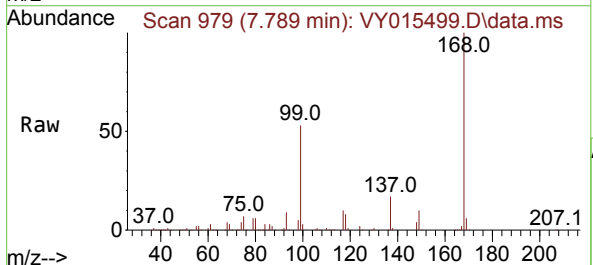


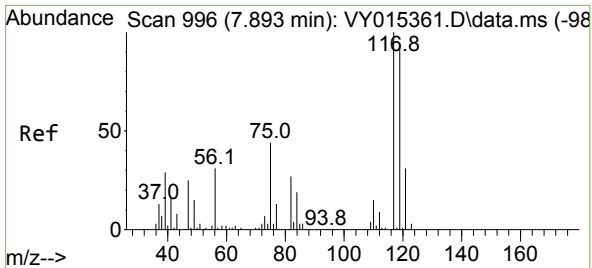
Tgt Ion:113 Resp: 158840  
 Ion Ratio Lower Upper  
 113 100  
 111 100.8 81.3 121.9  
 192 20.0 16.9 25.3



#36  
 1,1-Dichloropropene  
 Concen: 4.394 ug/l  
 RT: 7.789 min Scan# 979  
 Delta R.T. -0.122 min  
 Lab File: VY015499.D  
 Acq: 11 Sep 2023 20:02

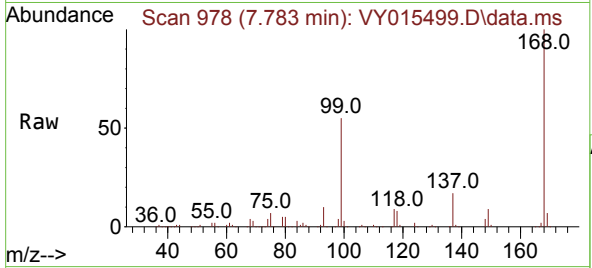
Tgt Ion: 75 Resp: 22626  
 Ion Ratio Lower Upper  
 75 100  
 110 9.7 17.8 53.5#  
 77 0.0 24.4 36.6#



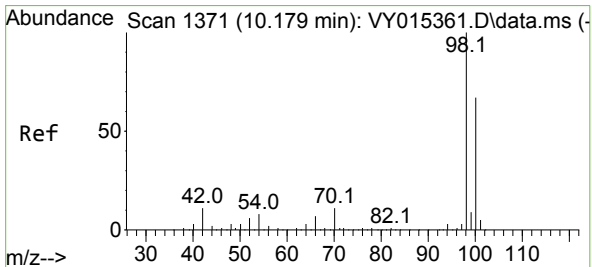
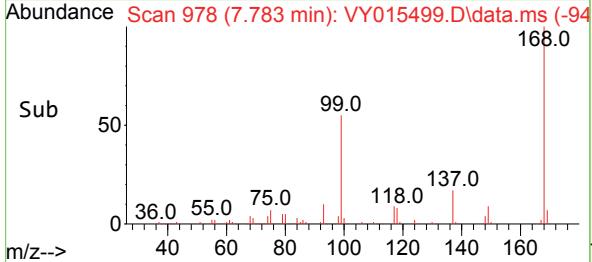
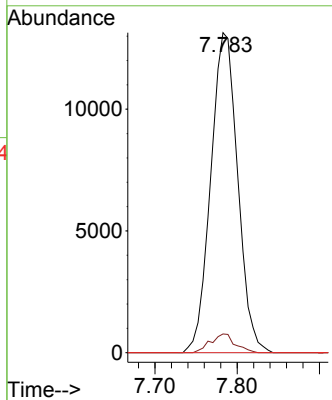


#38  
 Carbon Tetrachloride  
 Concen: 5.631 ug/l  
 RT: 7.783 min Scan# 91  
 Delta R.T. -0.110 min  
 Lab File: VY015499.D  
 Acq: 11 Sep 2023 20:02

Instrument :  
 MSVOA\_Y  
 ClientSampleId :

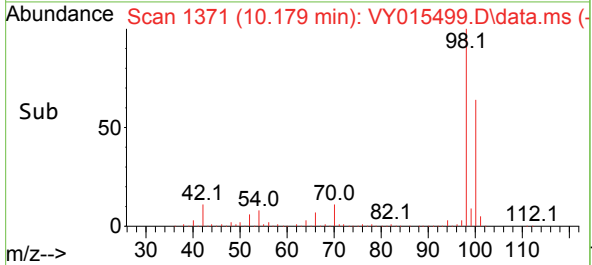
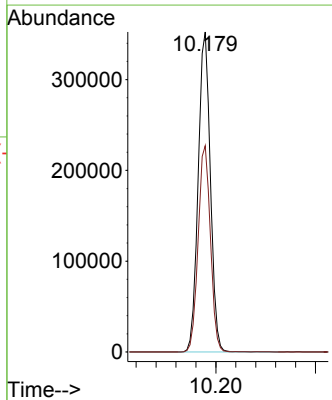
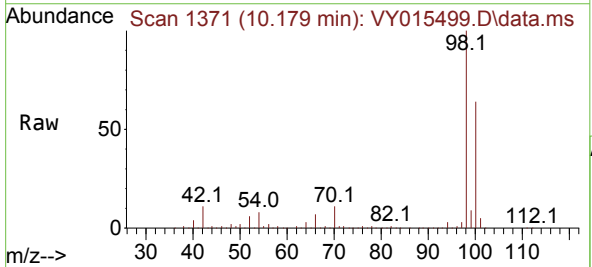


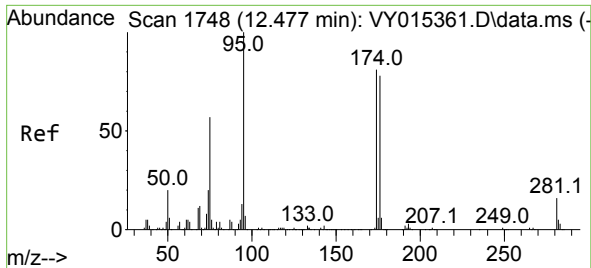
Tgt Ion:117 Resp: 29951  
 Ion Ratio Lower Upper  
 117 100  
 119 5.9 76.4 114.6#  
 121 0.0 25.8 38.6#



#50  
 Toluene-d8  
 Concen: 56.171 ug/l  
 RT: 10.179 min Scan# 1371  
 Delta R.T. -0.000 min  
 Lab File: VY015499.D  
 Acq: 11 Sep 2023 20:02

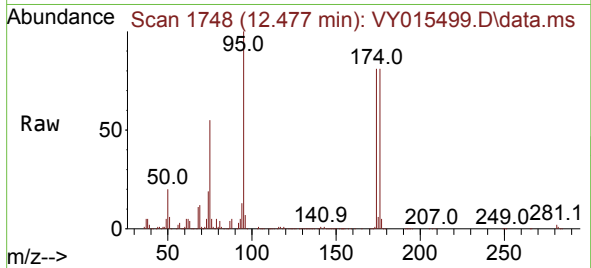
Tgt Ion: 98 Resp: 596601  
 Ion Ratio Lower Upper  
 98 100  
 100 64.9 50.1 75.1



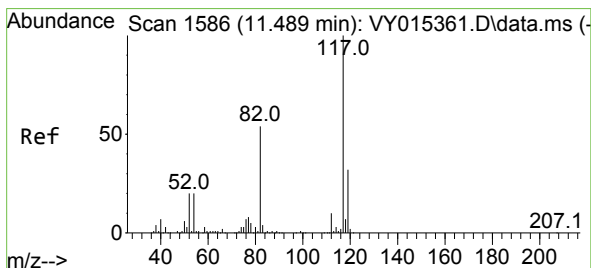
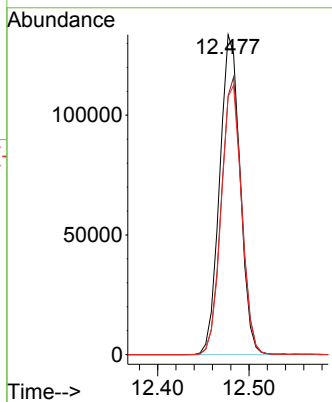
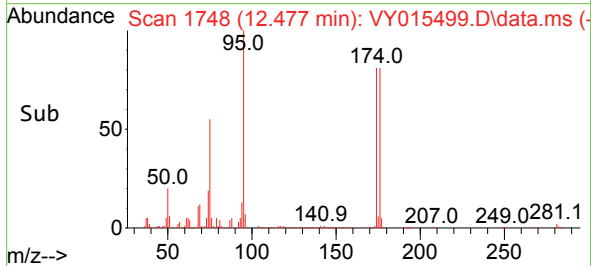


#62  
 4-Bromofluorobenzene  
 Concen: 52.677 ug/l  
 RT: 12.477 min Scan# 1748  
 Delta R.T. -0.000 min  
 Lab File: VY015499.D  
 Acq: 11 Sep 2023 20:02

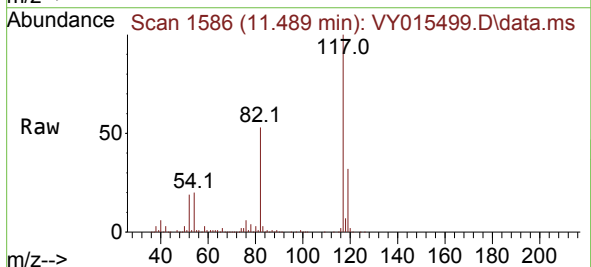
Instrument :  
 MSVOA\_Y  
 ClientSampleId :



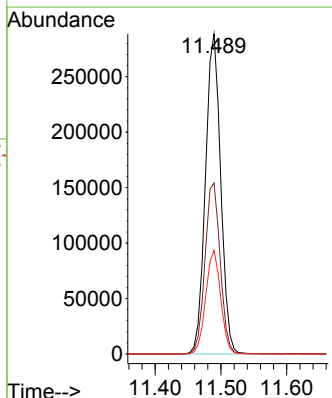
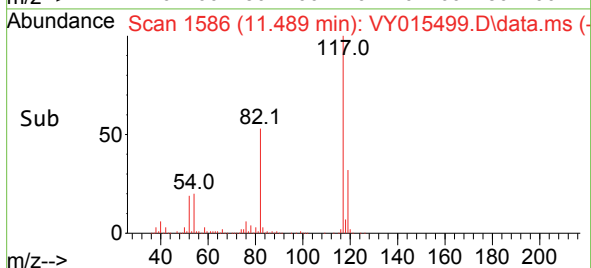
Tgt Ion: 95 Resp: 207703  
 Ion Ratio Lower Upper  
 95 100  
 174 86.5 0.0 178.2  
 176 84.2 0.0 173.8



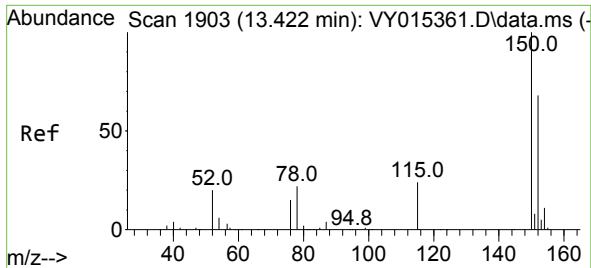
#63  
 Chlorobenzene-d5  
 Concen: 50.000 ug/l  
 RT: 11.489 min Scan# 1586  
 Delta R.T. -0.000 min  
 Lab File: VY015499.D  
 Acq: 11 Sep 2023 20:02



Tgt Ion: 117 Resp: 465499  
 Ion Ratio Lower Upper  
 117 100  
 82 53.4 43.4 65.0  
 119 32.4 26.3 39.5

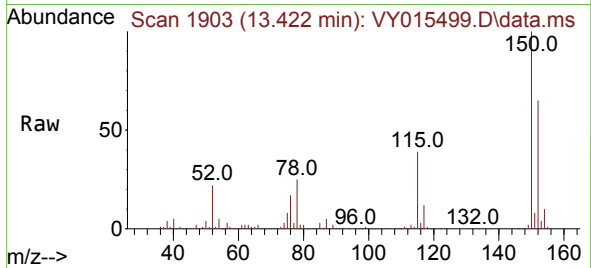




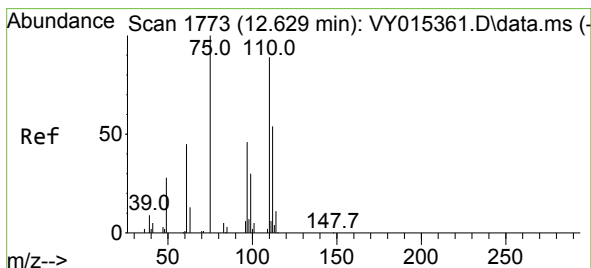
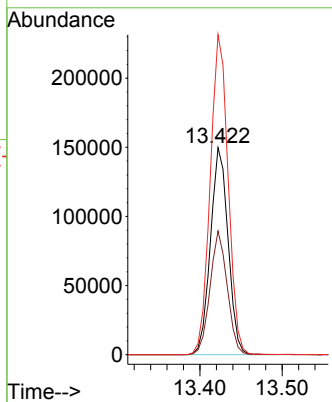
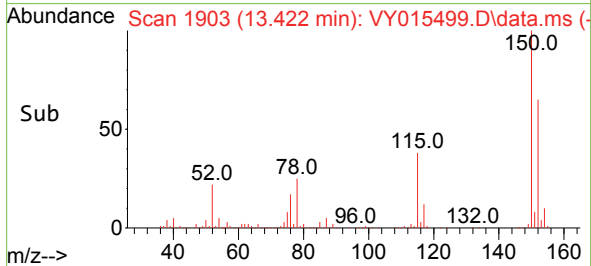


#72  
 1,4-Dichlorobenzene-d4  
 Concen: 50.000 ug/l  
 RT: 13.422 min Scan# 1903  
 Delta R.T. -0.000 min  
 Lab File: VY015499.D  
 Acq: 11 Sep 2023 20:02

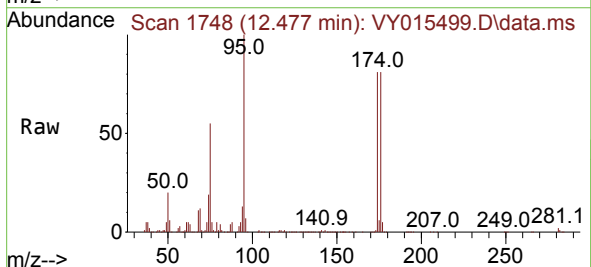
Instrument : MSVOA\_Y  
 ClientSampleId :



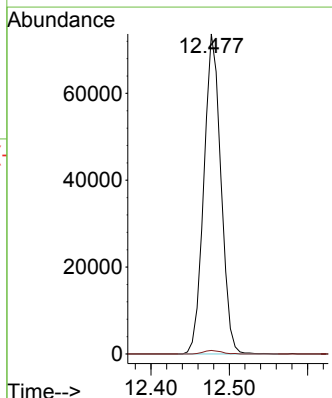
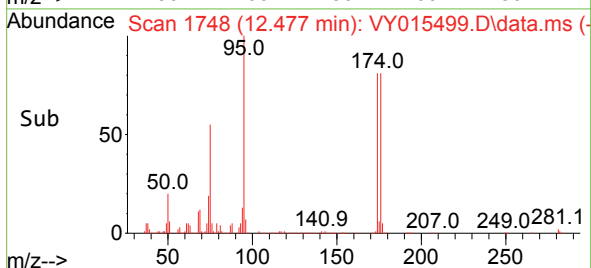
Tgt Ion:152 Resp: 223509  
 Ion Ratio Lower Upper  
 152 100  
 115 58.2 28.8 86.5  
 150 156.5 0.0 348.8

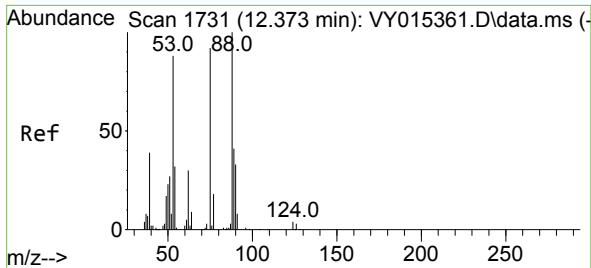


#76  
 1,2,3-Trichloropropane  
 Concen: 37.529 ug/l  
 RT: 12.477 min Scan# 1748  
 Delta R.T. -0.152 min  
 Lab File: VY015499.D  
 Acq: 11 Sep 2023 20:02



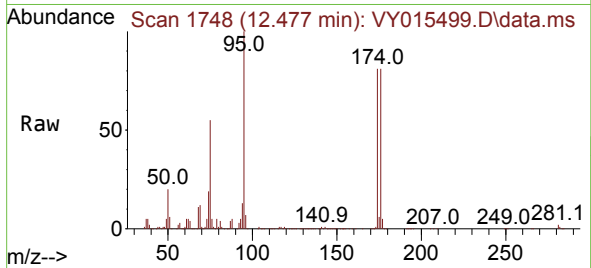
Tgt Ion: 75 Resp: 111236  
 Ion Ratio Lower Upper  
 75 100  
 77 1.1 0.0 0.0#





#81  
 trans-1,4-Dichloro-2-butene  
 Concen: 82.786 ug/l  
 RT: 12.477 min Scan# 11  
 Delta R.T. 0.097 min  
 Lab File: VY015499.D  
 Acq: 11 Sep 2023 20:02

Instrument :  
 MSVOA\_Y  
 ClientSampleId :



Tgt Ion: 75 Resp: 111236  
 Ion Ratio Lower Upper  
 75 100  
 53 0.0 77.8 116.8#  
 89 0.1 37.4 56.0#

