

Data Path : Z:\voasrv\HPCHEM1\MSVOA_Y\Data\VY091223\
 Data File : VY015526.D
 Acq On : 12 Sep 2023 22:32
 Operator : SY/MD
 Sample : 04396-01
 Misc : 5.05g/5.0mL/MSVOA_Y/SOIL
 ALS Vial : 25 Sample Multiplier: 1

Instrument :
 MSVOA_Y
 ClientSampleId :
 CHRT-24313

Integration Parameters: RTEINT.P
 Integrator: RTE
 Smoothing : ON Filtering: 5
 Sampling : 1 Min Area: 3 % of largest Peak
 Start Thrs: 0.2 Max Peaks: 100
 Stop Thrs : 0 Peak Location: TOP

If leading or trailing edge < 100 prefer < Baseline drop else tangent >
 Peak separation: 5

Method : Z:\voasrv\HPCHEM1\MSVOA_Y\methods\82Y082923S.M
 Title : SW846 8260

Signal : TIC: VY015526.D\data.ms

peak #	R.T. min	first scan	max scan	last scan	PK TY	peak height	corr. area	corr. % max.	% of total
1	4.710	463	474	489	rBV2	25275	76295	5.55%	0.942%
2	5.747	634	644	655	rBV4	6088	18815	1.37%	0.232%
3	6.978	834	846	867	rBV	78028	240295	17.47%	2.968%
4	7.716	955	967	973	rBV	199134	467184	33.97%	5.770%
5	7.789	973	979	992	rVB	353268	789639	57.42%	9.752%
6	8.142	1022	1037	1047	rBV2	219260	534483	38.87%	6.601%
7	8.691	1118	1127	1141	rVB	509643	1022133	74.33%	12.623%
8	10.179	1364	1371	1388	rVB	832324	1375167	100.00%	16.983%
9	10.581	1430	1437	1443	rBV	29950	50550	3.68%	0.624%
10	10.947	1489	1497	1504	rBV	25610	43877	3.19%	0.542%
11	11.489	1579	1586	1603	rVB	722818	1173195	85.31%	14.489%
12	12.483	1742	1749	1759	rBV	575496	892628	64.91%	11.024%
13	13.428	1894	1904	1918	rBV	667349	1053759	76.63%	13.014%
14	14.282	2036	2044	2052	rVB2	11751	21622	1.57%	0.267%
15	14.391	2053	2062	2068	rBV	8237	18402	1.34%	0.227%
16	14.873	2129	2141	2147	rBV3	15823	38619	2.81%	0.477%
17	14.946	2148	2153	2157	rBV2	10313	16925	1.23%	0.209%
18	15.001	2157	2162	2164	rBV2	9111	14656	1.07%	0.181%
19	15.275	2201	2207	2210	rBV2	14957	29617	2.15%	0.366%
20	15.312	2210	2213	2217	rVB3	9219	16283	1.18%	0.201%
21	15.556	2245	2253	2254	rBV6	9489	22563	1.64%	0.279%
22	15.885	2304	2307	2311	rBV5	8074	14408	1.05%	0.178%
23	16.476	2400	2404	2411	rVB4	31563	56318	4.10%	0.696%
24	16.763	2445	2451	2454	rBV4	52160	109971	8.00%	1.358%

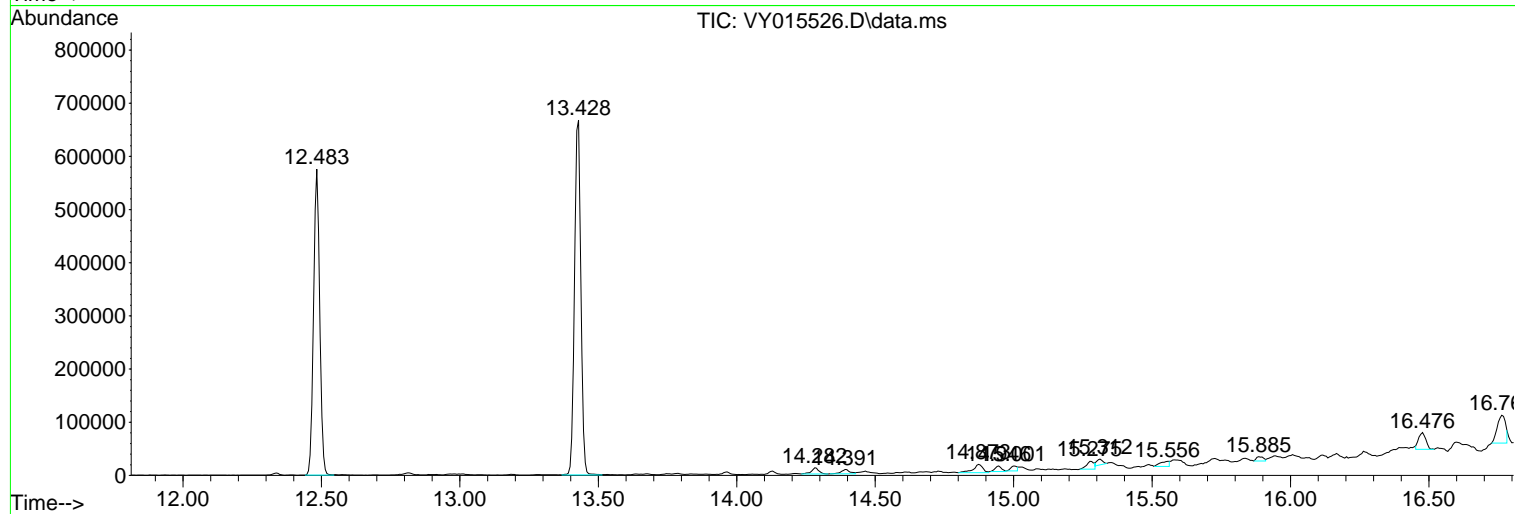
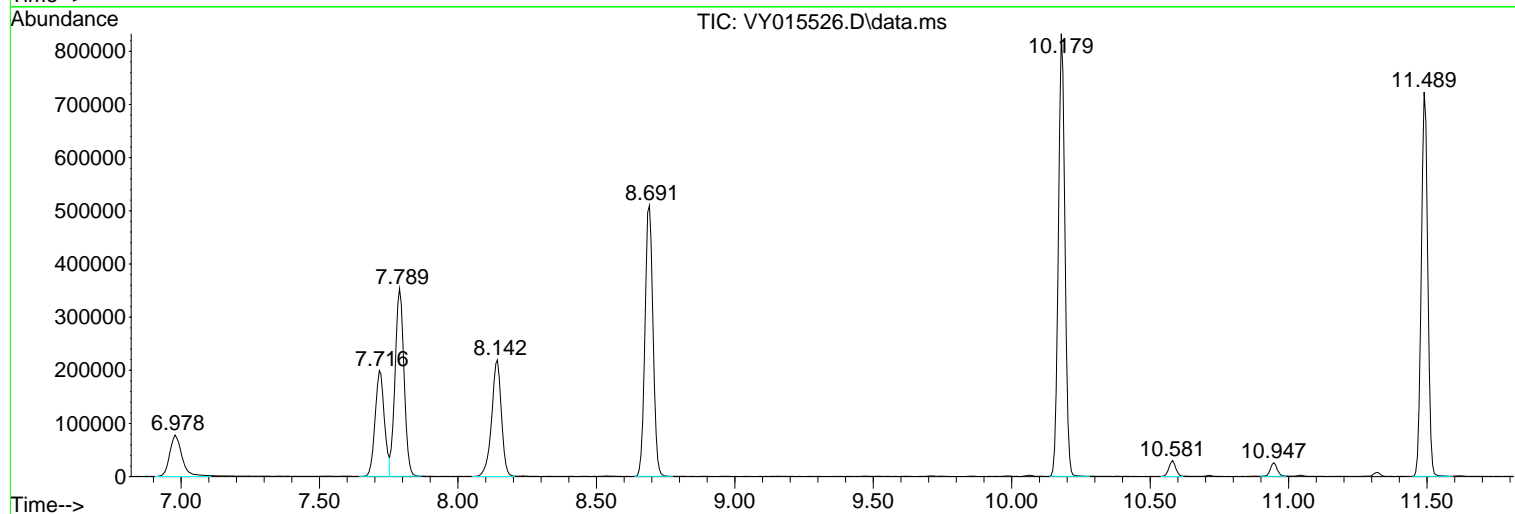
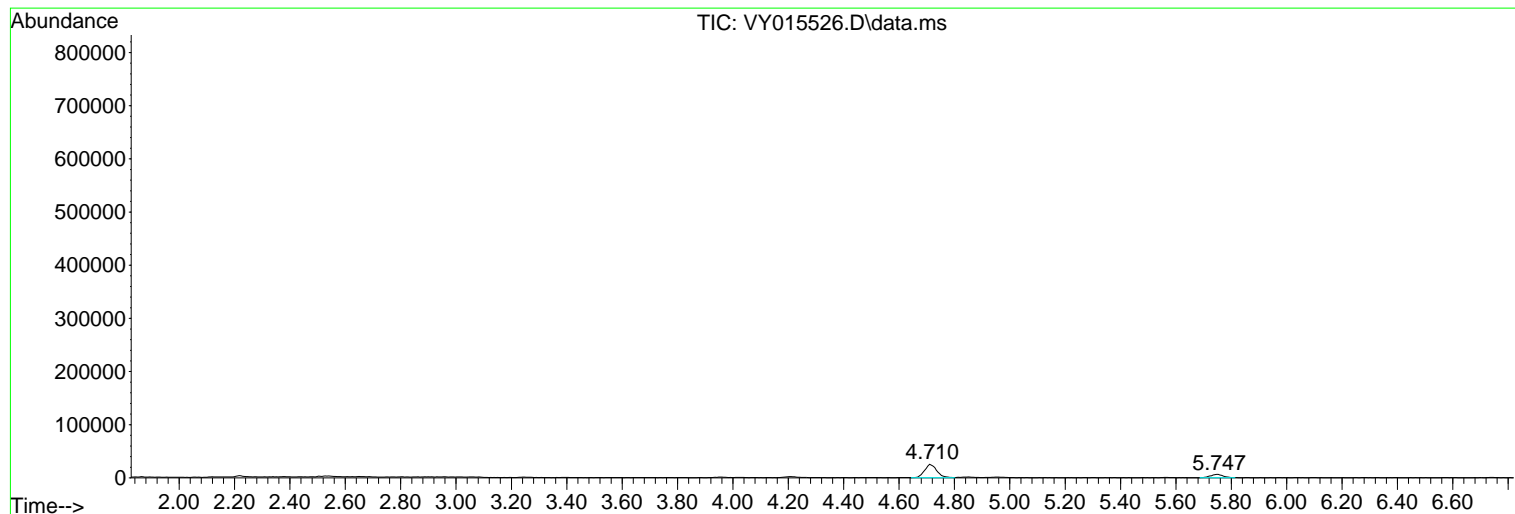
Sum of corrected areas: 8097404

Data Path : Z:\voasrv\HPCHEM1\MSVOA_Y\Data\VY091223\
 Data File : VY015526.D
 Acq On : 12 Sep 2023 22:32
 Operator : SY/MD
 Sample : 04396-01
 Misc : 5.05g/5.0mL/MSVOA_Y/SOIL
 ALS Vial : 25 Sample Multiplier: 1

Instrument :
 MSVOA_Y
 ClientSampleId :
 CHRT-24313

Quant Method : Z:\voasrv\HPCHEM1\MSVOA_Y\methods\82Y082923S.M
 Quant Title : SW846 8260

TIC Library : C:\Database\NIST20.L
 TIC Integration Parameters: LSCINT.P



Data Path : Z:\voasrv\HPCHEM1\MSVOA_Y\Data\VY091223\
 Data File : VY015526.D
 Acq On : 12 Sep 2023 22:32
 Operator : SY/MD
 Sample : 04396-01
 Misc : 5.05g/5.0mL/MSVOA_Y/SOIL
 ALS Vial : 25 Sample Multiplier: 1

Instrument :
 MSVOA_Y
 ClientSampleId :
 CHRT-24313

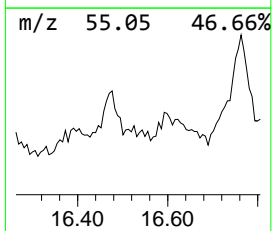
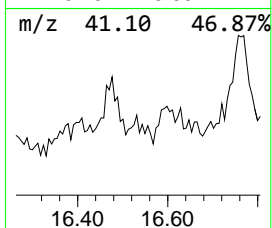
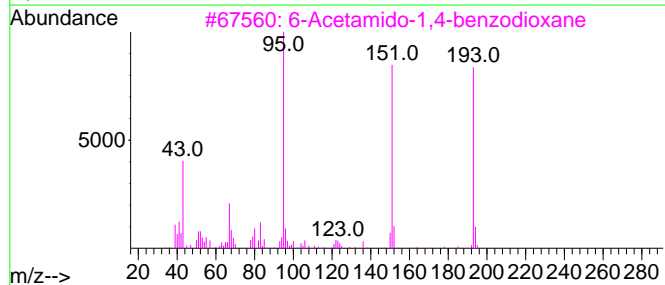
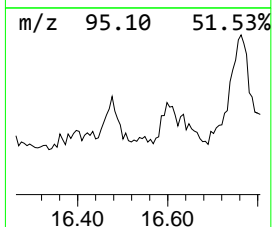
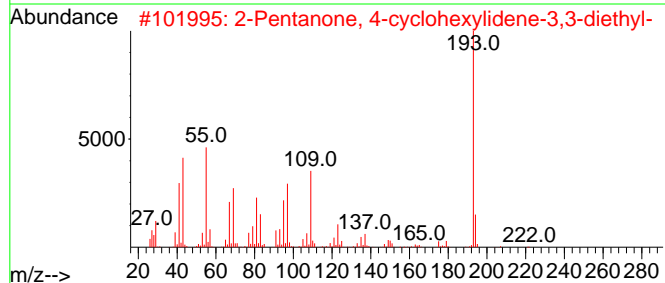
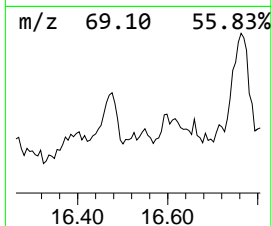
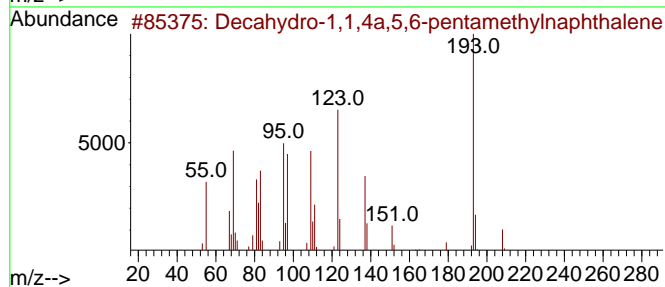
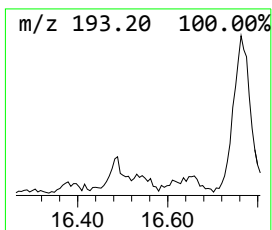
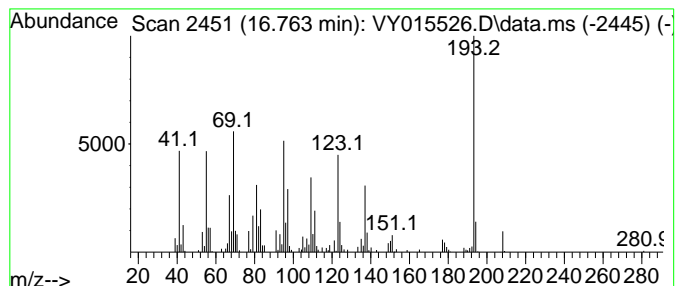
Quant Method : Z:\voasrv\HPCHEM1\MSVOA_Y\methods\82Y082923S.M
 Quant Title : SW846 8260

TIC Library : C:\Database\NIST20.L
 TIC Integration Parameters: LSCINT.P

 Peak Number 2 Decahydro-1,1,4a,5,6-pentam... Concentration Rank 2

R.T.	EstConc	Area	Relative to ISTD	R.T.
16.763	5.22 ug/l	109971	1,4-Dichlorobenzene-d4	13.428

Hit#	of	5	Tentative ID	MW	MolForm	CAS#	Qual
1			Decahydro-1,1,4a,5,6-pentamethyl...	208	C15H28	080655-44-3	95
2			2-Pentanone, 4-cyclohexylidene-3...	222	C15H26O	313253-65-5	46
3			6-Acetamido-1,4-benzodioxane	193	C10H11NO3	063546-19-0	38
4			2-Diethylamino-4-phenylthiooct-2...	302	C18H26N2S	1000090-57-0	35
5			Pyrazolo[5,1-c]-as-triazine-3-ca...	193	C6H7N7O	016111-78-7	35



Data Path : Z:\voasrv\HPCHEM1\MSVOA_Y\Data\VY091223\
Data File : VY015526.D
Acq On : 12 Sep 2023 22:32
Operator : SY/MD
Sample : 04396-01
Misc : 5.05g/5.0mL/MSVOA_Y/SOIL
ALS Vial : 25 Sample Multiplier: 1

Instrument :
MSVOA_Y
ClientSampleId :
CHRT-24313

Quant Method : Z:\voasrv\HPCHEM1\MSVOA_Y\methods\82Y082923S.M
Quant Title : SW846 8260

TIC Library : C:\Database\NIST0.L
TIC Integration Parameters: LSCINT.P

TIC Top Hit name	RT	EstConc	Units	Response	--Internal Standard--			
					#	RT	Resp	Conc
Decahydro-1,1,4...	16.763	5.2	ug/l	109971	4	13.428	1053760	50.0