

Data Path : Z:\voasrv\HPCHEM1\MSVOA_Y\Data\VY091322\
 Data File : VY010463.D
 Acq On : 13 Sep 2022 16:55
 Operator : KP/MD
 Sample : N4509-04RE
 Misc : 5.59g/5.0mL/MSVOA_Y/SOIL
 ALS Vial : 14 Sample Multiplier: 1

Instrument :
 MSVOA_Y
 ClientSampleId :
 S1-SO_115D-20220902RE

Integration Parameters: RTEINT.P

Integrator: RTE
 Smoothing : ON Filtering: 5
 Sampling : 1 Min Area: 3 % of largest Peak
 Start Thrs: 0.2 Max Peaks: 100
 Stop Thrs : 0 Peak Location: TOP

If leading or trailing edge < 100 prefer < Baseline drop else tangent >
 Peak separation: 5

Method : Z:\voasrv\HPCHEM1\MSVOA_Y\methods\82Y090922S.M
 Title : SW846 8260

Signal : TIC: VY010463.D\data.ms

peak #	R.T. min	first scan	max scan	last scan	PK TY	peak height	corr. area	corr. % max.	% of total
1	4.704	462	473	484	rBV2	11654	35240	3.22%	0.612%
2	7.709	952	966	972	rBV	150672	366090	33.40%	6.358%
3	7.783	972	978	996	rVB	268395	604865	55.19%	10.505%
4	8.136	1027	1036	1048	rBV	148385	327426	29.87%	5.687%
5	8.685	1117	1126	1140	rBV	412220	801006	73.08%	13.912%
6	10.172	1362	1370	1380	rBV	621774	1096017	100.00%	19.036%
7	11.489	1578	1586	1599	rBV	580210	950261	86.70%	16.504%
8	12.477	1741	1748	1759	rBV	447003	724686	66.12%	12.586%
9	13.422	1896	1903	1915	rVB	558442	823727	75.16%	14.306%
10	13.964	1985	1992	1998	rVB3	16839	28400	2.59%	0.493%

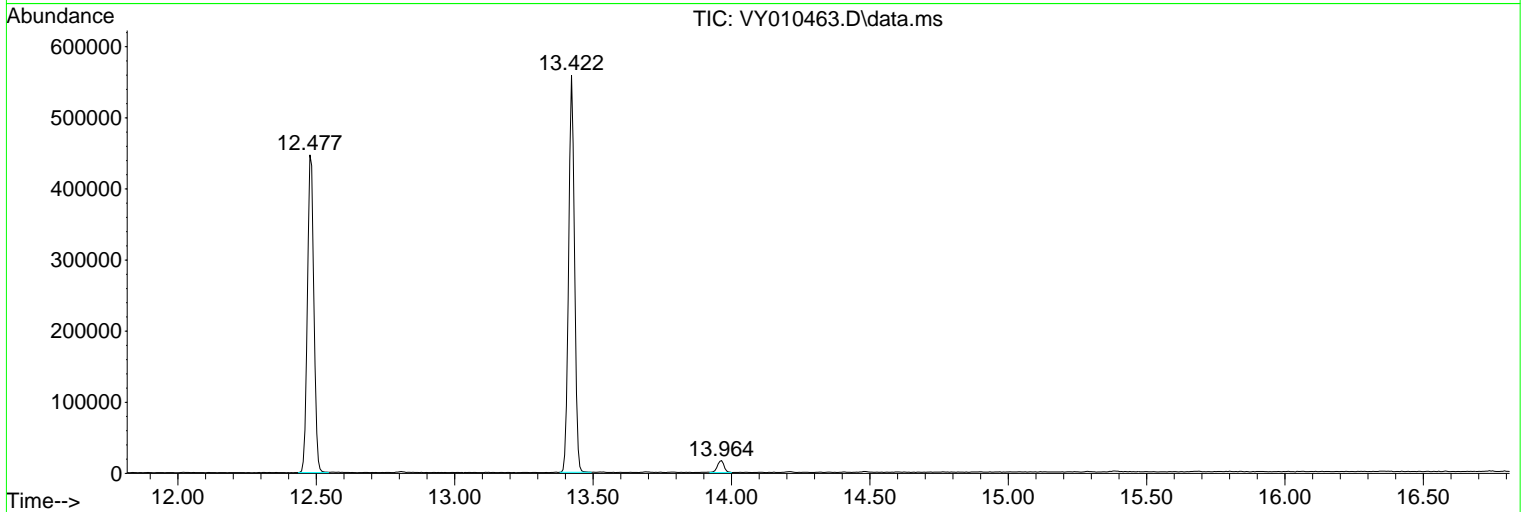
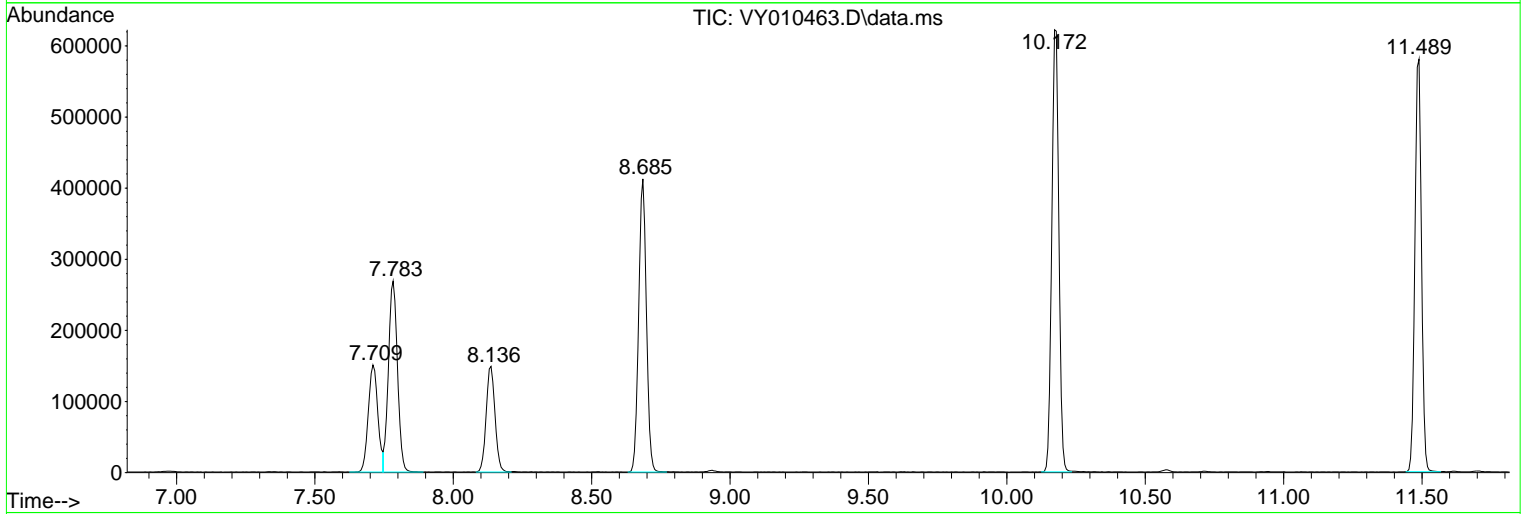
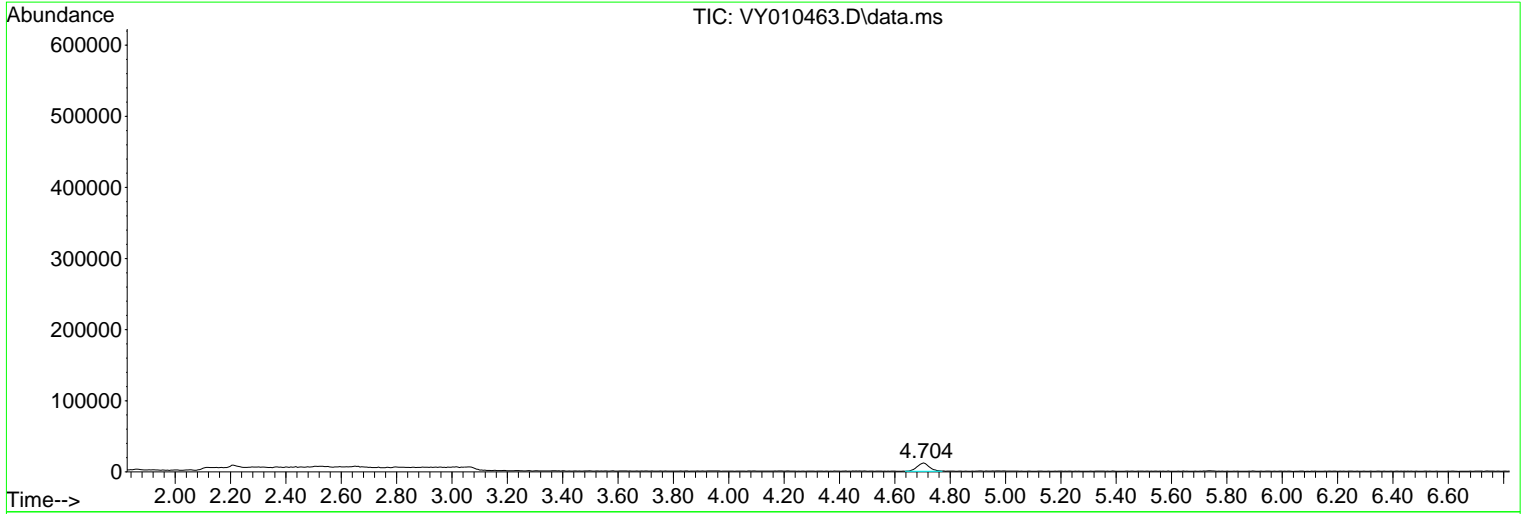
Sum of corrected areas: 5757718

Data Path : Z:\voasrv\HPCHEM1\MSVOA_Y\Data\VY091322\
 Data File : VY010463.D
 Acq On : 13 Sep 2022 16:55
 Operator : KP/MD
 Sample : N4509-04RE
 Misc : 5.59g/5.0mL/MSVOA_Y/SOIL
 ALS Vial : 14 Sample Multiplier: 1

Instrument :
 MSVOA_Y
ClientSampleId :
 S1-SO_115D-20220902RE

Quant Method : Z:\voasrv\HPCHEM1\MSVOA_Y\methods\82Y090922S.M
 Quant Title : SW846 8260

TIC Library : C:\Database\NIST20.L
 TIC Integration Parameters: LSCINT.P



Library Search Compound Report

Data Path : Z:\voasrv\HPCHEM1\MSVOA_Y\Data\VY091322\
Data File : VY010463.D
Acq On : 13 Sep 2022 16:55
Operator : KP/MD
Sample : N4509-04RE
Misc : 5.59g/5.0mL/MSVOA_Y/SOIL
ALS Vial : 14 Sample Multiplier: 1

Instrument :
MSVOA_Y
ClientSampleId :
S1-SO_115D-20220902RE

Quant Method : Z:\voasrv\HPCHEM1\MSVOA_Y\methods\82Y090922S.M
Quant Title : SW846 8260

TIC Library : C:\Database\NIST20.L
TIC Integration Parameters: LSCINT.P

No Library Search Compounds Detected

Data Path : Z:\voasrv\HPCHEM1\MSVOA_Y\Data\VY091322\
Data File : VY010463.D
Acq On : 13 Sep 2022 16:55
Operator : KP/MD
Sample : N4509-04RE
Misc : 5.59g/5.0mL/MSVOA_Y/SOIL
ALS Vial : 14 Sample Multiplier: 1

Instrument :
MSVOA_Y
ClientSampleId :
S1-SO_115D-20220902RE

Quant Method : Z:\voasrv\HPCHEM1\MSVOA_Y\methods\82Y090922S.M
Quant Title : SW846 8260

TIC Library : C:\Database\NIST20.L
TIC Integration Parameters: LSCINT.P

TIC Top Hit name	RT	EstConc	Units	Response	--Internal Standard--			
					#	RT	Resp	Conc
