

Data Path : Z:\voasrv\HPCHEM1\MSVOA_Y\Data\VY091324\
 Data File : VY019549.D
 Acq On : 13 Sep 2024 19:06
 Operator : SY/MD
 Sample : P4000-01
 Misc : 5.03g/5.0mL/MSVOA_Y/SOIL/A
 ALS Vial : 23 Sample Multiplier: 1

Instrument :
 MSVOA_Y
 ClientSampleId :
 OK-02-09132024

Quant Time: Sep 13 23:37:08 2024
 Quant Method : Z:\voasrv\HPCHEM1\MSVOA_Y\methods\82Y090924S.M
 Quant Title : SW846 8260
 QLast Update : Mon Sep 09 16:00:30 2024
 Response via : Initial Calibration

Compound	R.T.	QIon	Response	Conc	Units	Dev(Min)

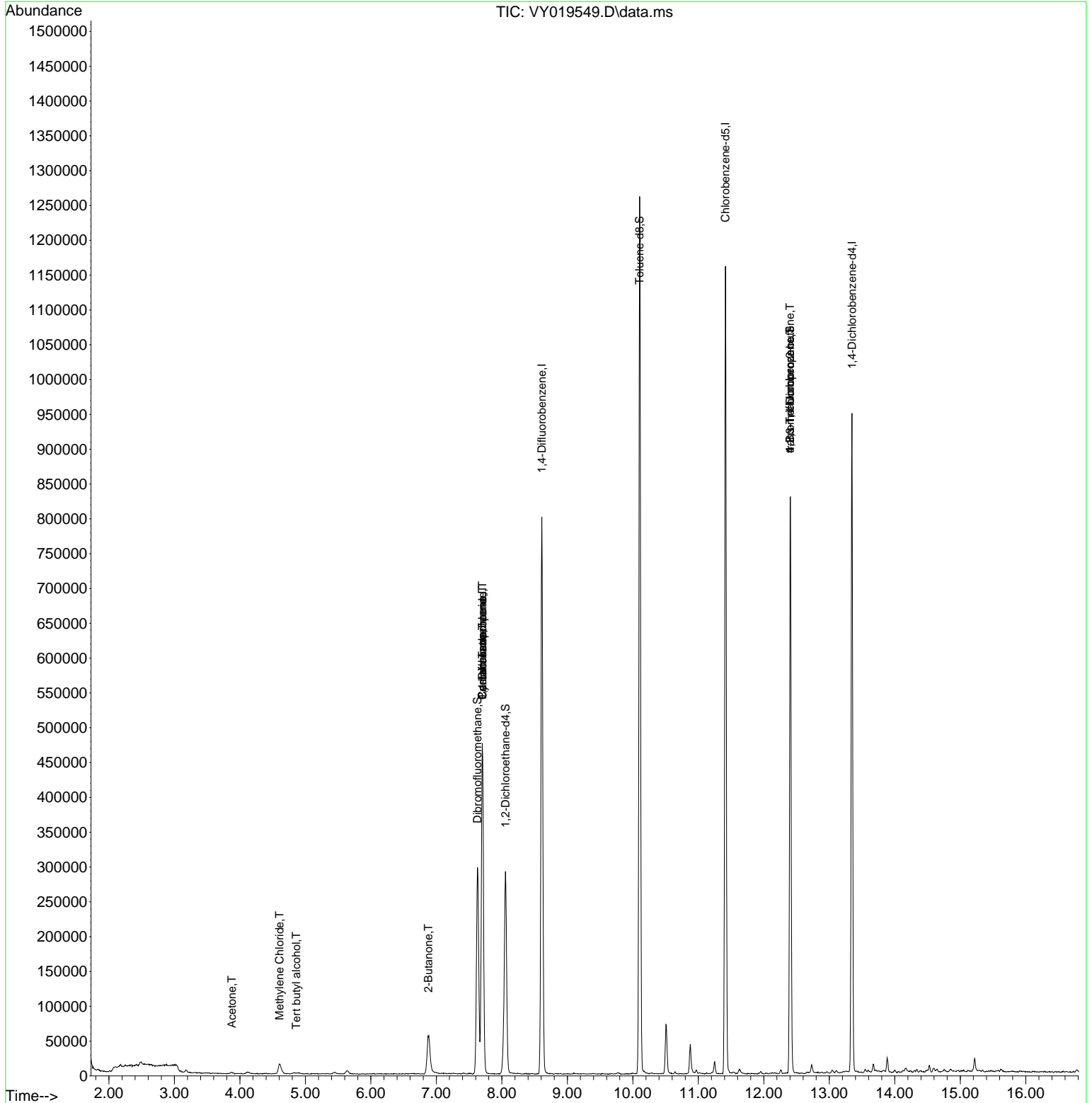
Internal Standards						
1) Pentafluorobenzene	7.701	168	347954	50.000	ug/l	# 0.00
34) 1,4-Difluorobenzene	8.609	114	670394	50.000	ug/l	0.00
63) Chlorobenzene-d5	11.414	117	597781	50.000	ug/l	0.00
72) 1,4-Dichlorobenzene-d4	13.346	152	221796	50.000	ug/l	0.00
System Monitoring Compounds						
33) 1,2-Dichloroethane-d4	8.055	65	207795	64.493	ug/l	0.00
Spiked Amount	50.000	Range	50 - 163	Recovery	=	128.980%
35) Dibromofluoromethane	7.628	113	213896	56.273	ug/l	0.00
Spiked Amount	50.000	Range	54 - 147	Recovery	=	112.540%
50) Toluene-d8	10.103	98	801934	57.040	ug/l	0.00
Spiked Amount	50.000	Range	58 - 134	Recovery	=	114.080%
62) 4-Bromofluorobenzene	12.401	95	261477	48.370	ug/l	0.00
Spiked Amount	50.000	Range	29 - 146	Recovery	=	96.740%
Target Compounds						
						Qvalue
2) Dichlorodifluoromethane	1.861	85	153	Below Cal	#	43
11) Tert butyl alcohol	4.860	59	802	3.082	ug/l #	82
13) Acrolein	3.665	56	112	Below Cal		96
16) Acetone	3.879	43	2623	3.417	ug/l	95
20) Methylene Chloride	4.604	84	9649	2.756	ug/l #	86
25) 2-Butanone	6.878	43	3937	3.606	ug/l #	62
31) Cyclohexane	7.701	56	9087	1.576	ug/l #	12
36) 1,1-Dichloropropene	7.701	75	30244	5.848	ug/l #	48
38) Carbon Tetrachloride	7.701	117	37581	6.443	ug/l #	16
76) 1,2,3-Trichloropropane	12.401	75	142295	68.448	ug/l #	100
81) trans-1,4-Dichloro-2-b...	12.401	75	142295	131.401	ug/l #	16

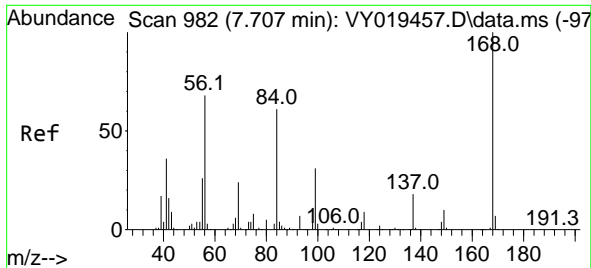
(#) = qualifier out of range (m) = manual integration (+) = signals summed

Data Path : Z:\voasrv\HPCHEM1\MSVOA_Y\Data\VY091324\
 Data File : VY019549.D
 Acq On : 13 Sep 2024 19:06
 Operator : SY/MD
 Sample : P4000-01
 Misc : 5.03g/5.0mL/MSVOA_Y/SOIL/A
 ALS Vial : 23 Sample Multiplier: 1

Instrument :
 MSVOA_Y
ClientSampleId :
 OK-02-09132024

Quant Time: Sep 13 23:37:08 2024
 Quant Method : Z:\voasrv\HPCHEM1\MSVOA_Y\methods\82Y090924S.M
 Quant Title : SW846 8260
 QLast Update : Mon Sep 09 16:00:30 2024
 Response via : Initial Calibration

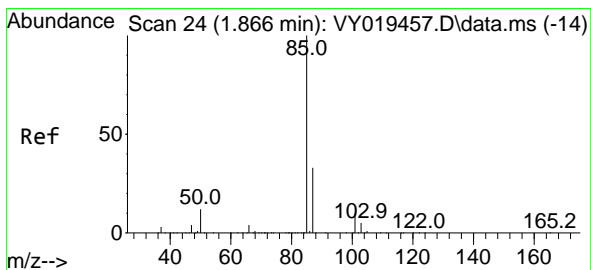
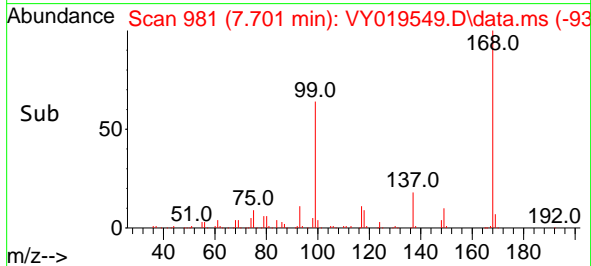
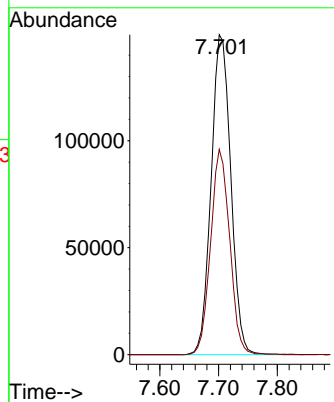
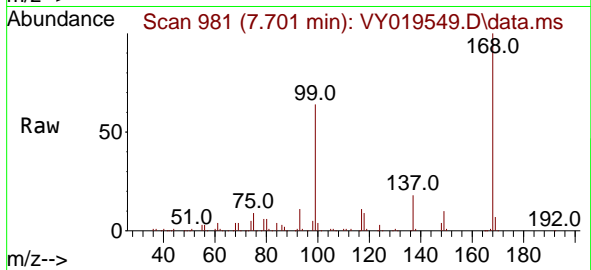




#1
 Pentafluorobenzene
 Concen: 50.000 ug/l
 RT: 7.701 min Scan# 91
 Delta R.T. -0.006 min
 Lab File: VY019549.D
 Acq: 13 Sep 2024 19:06

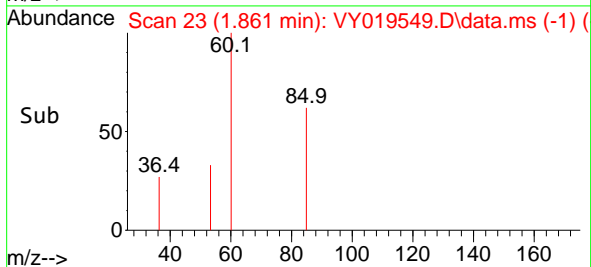
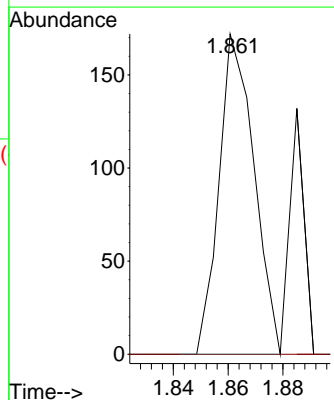
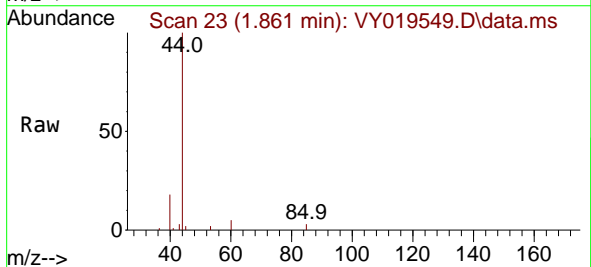
Instrument : MSVOA_Y
 ClientSampleId : OK-02-09132024

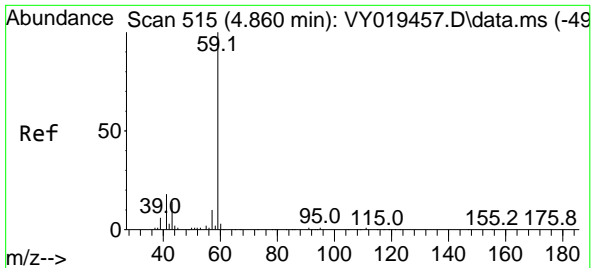
Tgt Ion:168 Resp: 347954
 Ion Ratio Lower Upper
 168 100
 99 64.2 39.1 58.7#



#2
 Dichlorodifluoromethane
 Concen: Below Cal
 RT: 1.861 min Scan# 23
 Delta R.T. -0.005 min
 Lab File: VY019549.D
 Acq: 13 Sep 2024 19:06

Tgt Ion: 85 Resp: 153
 Ion Ratio Lower Upper
 85 100
 87 0.0 16.0 48.0#

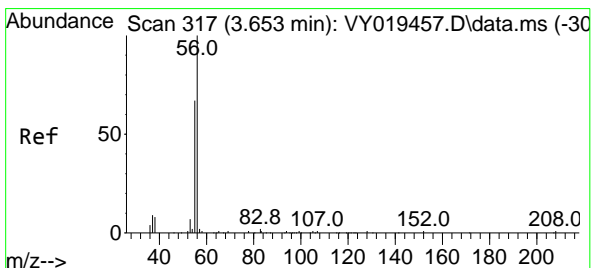
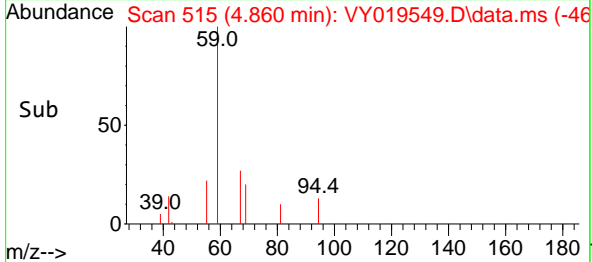
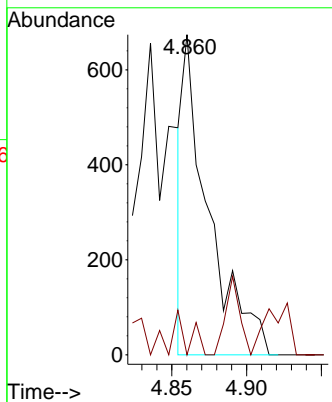
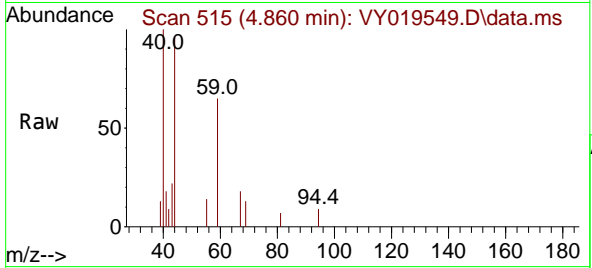




#11
 Tert butyl alcohol
 Concen: 3.082 ug/l
 RT: 4.860 min Scan# 511
 Delta R.T. 0.000 min
 Lab File: VY019549.D
 Acq: 13 Sep 2024 19:06

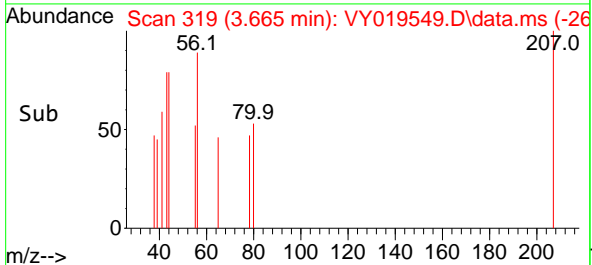
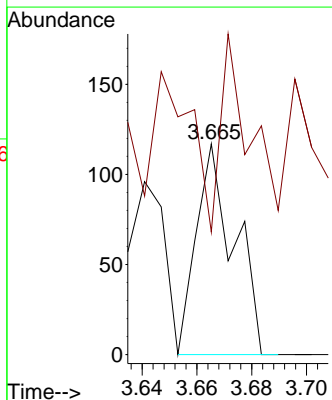
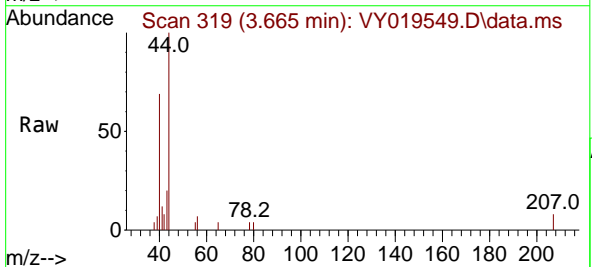
Instrument : MSVOA_Y
 ClientSampleId : VY019549.D
 OK-02-09132024

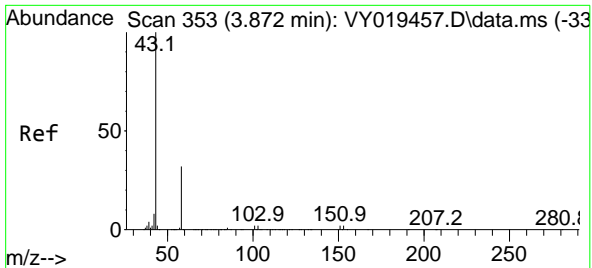
Tgt Ion: 59 Resp: 802
 Ion Ratio Lower Upper
 59 100
 57 9.7 3.0 4.6#



#13
 Acrolein
 Concen: Below Cal
 RT: 3.665 min Scan# 319
 Delta R.T. 0.012 min
 Lab File: VY019549.D
 Acq: 13 Sep 2024 19:06

Tgt Ion: 56 Resp: 112
 Ion Ratio Lower Upper
 56 100
 55 73.2 55.7 83.5

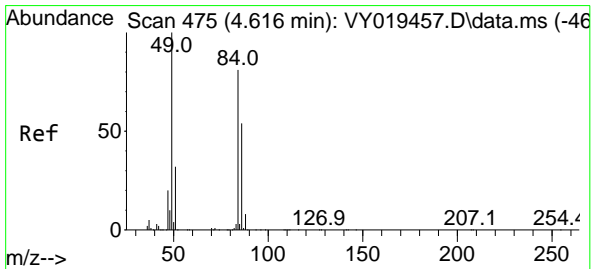
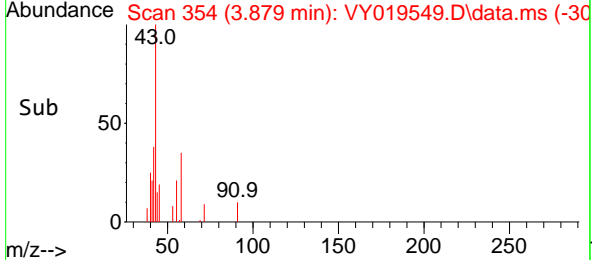
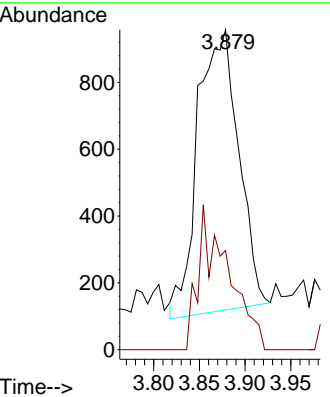
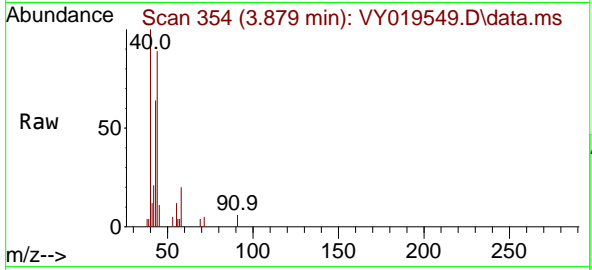




#16
 Acetone
 Concen: 3.417 ug/l
 RT: 3.879 min Scan# 31
 Delta R.T. 0.006 min
 Lab File: VY019549.D
 Acq: 13 Sep 2024 19:06

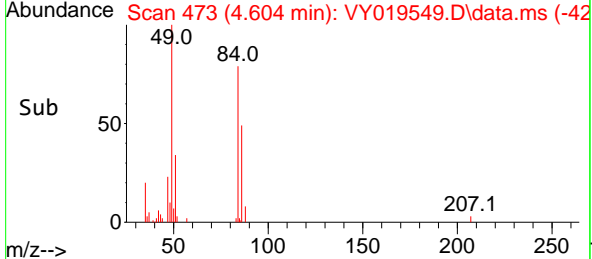
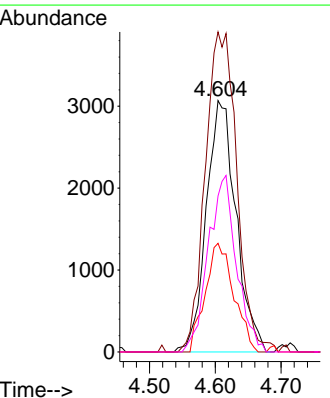
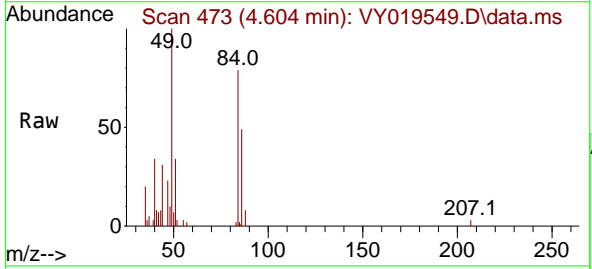
Instrument : MSVOA_Y
 ClientSampleId : OK-02-09132024

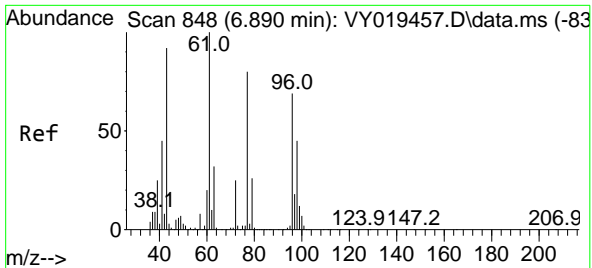
Tgt Ion: 43 Resp: 2623
 Ion Ratio Lower Upper
 43 100
 58 36.3 31.7 47.5



#20
 Methylene Chloride
 Concen: 2.756 ug/l
 RT: 4.604 min Scan# 473
 Delta R.T. -0.012 min
 Lab File: VY019549.D
 Acq: 13 Sep 2024 19:06

Tgt Ion: 84 Resp: 9649
 Ion Ratio Lower Upper
 84 100
 49 127.3 84.4 126.6#
 51 43.2 26.0 39.0#
 86 62.0 49.5 74.3

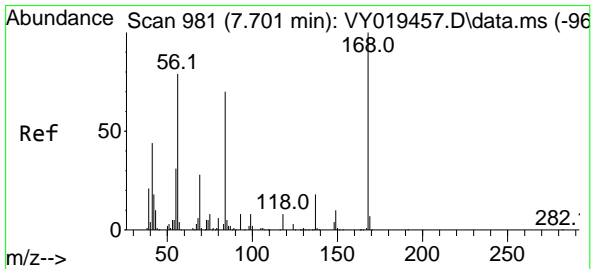
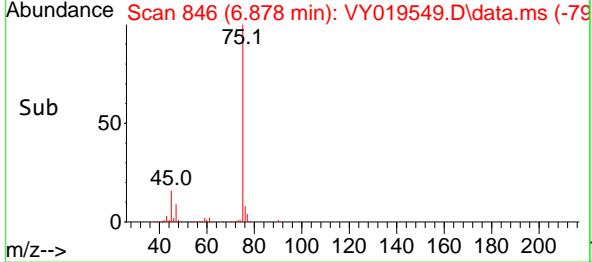
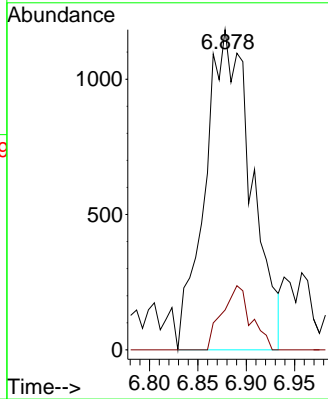
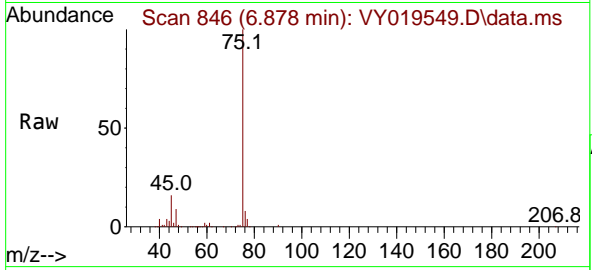




#25
 2-Butanone
 Concen: 3.606 ug/l
 RT: 6.878 min Scan# 846
 Delta R.T. -0.012 min
 Lab File: VY019549.D
 Acq: 13 Sep 2024 19:06

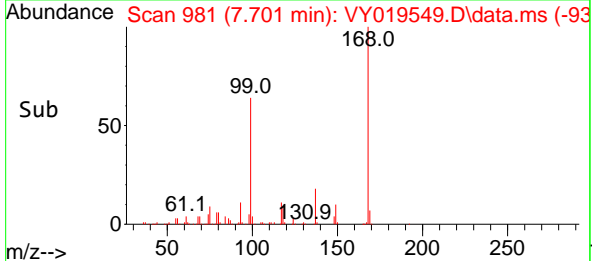
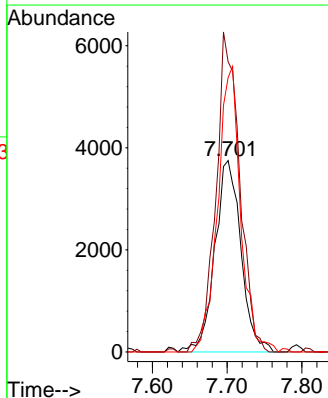
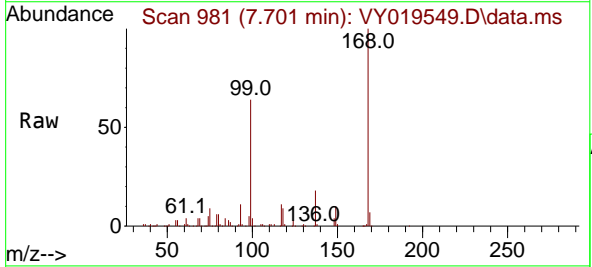
Instrument : MSVOA_Y
 ClientSampleId : OK-02-09132024

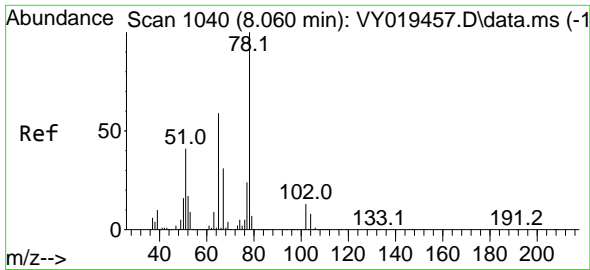
Tgt Ion: 43 Resp: 3937
 Ion Ratio Lower Upper
 43 100
 72 12.4 27.3 40.9#



#31
 Cyclohexane
 Concen: 1.576 ug/l
 RT: 7.701 min Scan# 981
 Delta R.T. 0.000 min
 Lab File: VY019549.D
 Acq: 13 Sep 2024 19:06

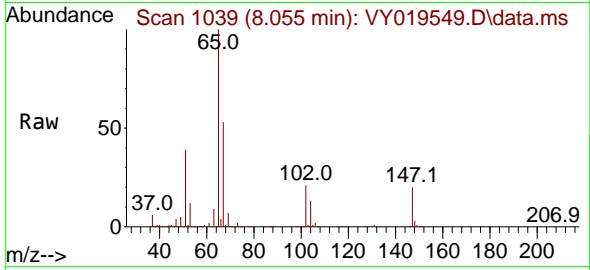
Tgt Ion: 56 Resp: 9087
 Ion Ratio Lower Upper
 56 100
 69 151.7 28.7 43.1#
 84 143.4 77.7 116.5#



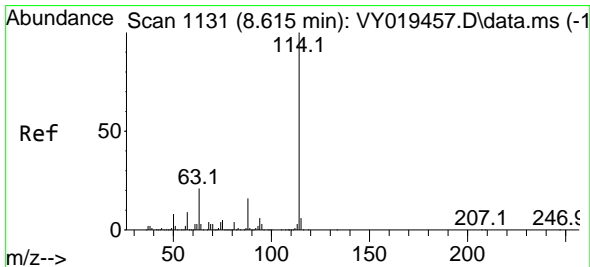
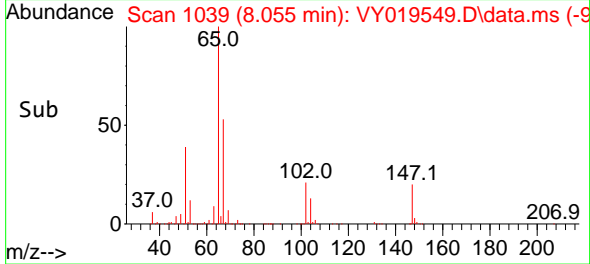
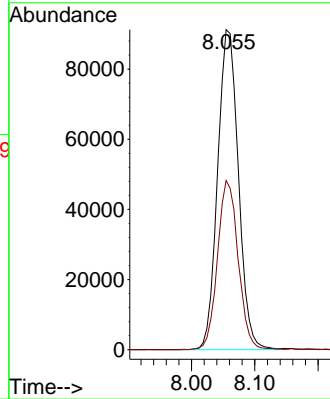


#33
 1,2-Dichloroethane-d4
 Concen: 64.493 ug/l
 RT: 8.055 min Scan# 11039
 Delta R.T. -0.006 min
 Lab File: VY019549.D
 Acq: 13 Sep 2024 19:06

Instrument : MSVOA_Y
 ClientSampleId : OK-02-09132024

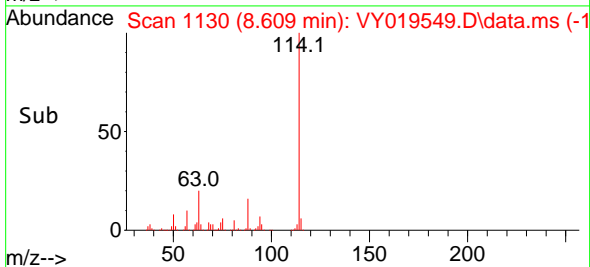
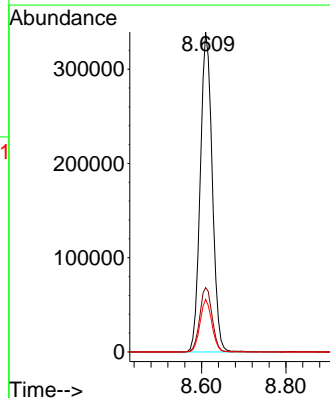
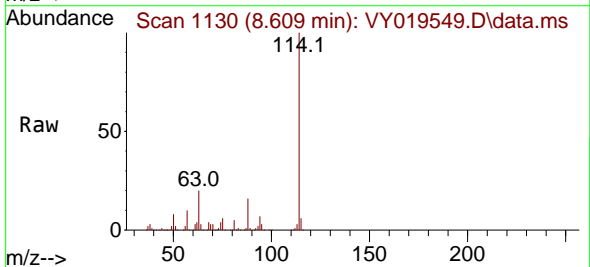


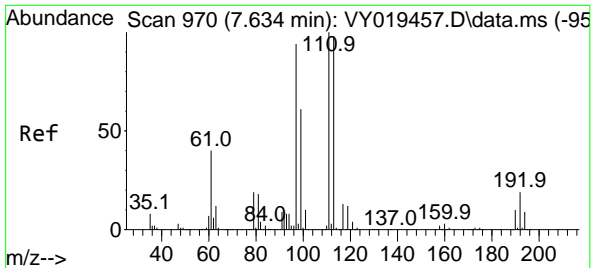
Tgt Ion: 65 Resp: 207795
 Ion Ratio Lower Upper
 65 100
 67 52.6 0.0 109.6



#34
 1,4-Difluorobenzene
 Concen: 50.000 ug/l
 RT: 8.609 min Scan# 1130
 Delta R.T. -0.006 min
 Lab File: VY019549.D
 Acq: 13 Sep 2024 19:06

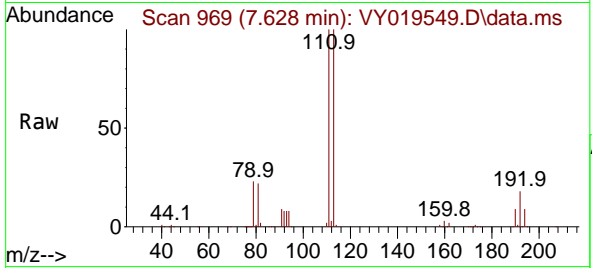
Tgt Ion: 114 Resp: 670394
 Ion Ratio Lower Upper
 114 100
 63 20.1 0.0 35.0
 88 16.4 0.0 27.2





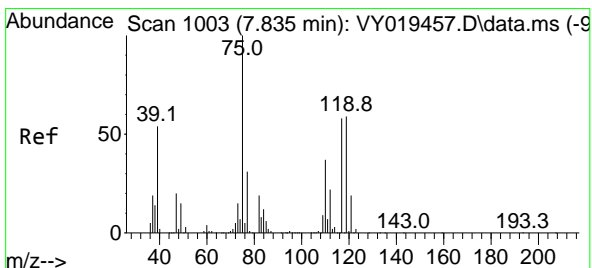
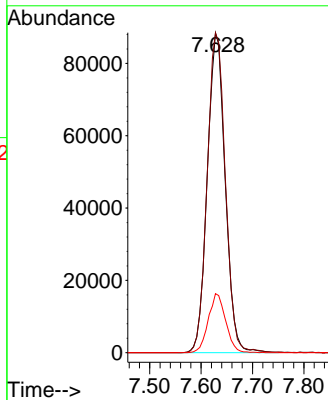
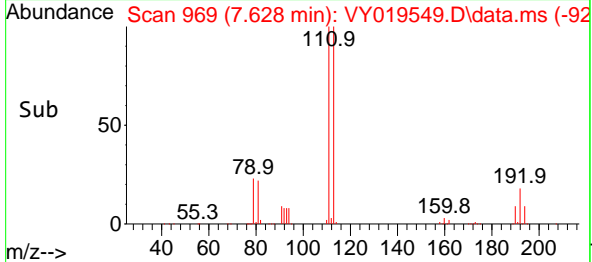
#35
 Dibromofluoromethane
 Concen: 56.273 ug/l
 RT: 7.628 min Scan# 909
 Delta R.T. -0.006 min
 Lab File: VY019549.D
 Acq: 13 Sep 2024 19:06

Instrument : MSVOA_Y
 ClientSampleId : OK-02-09132024

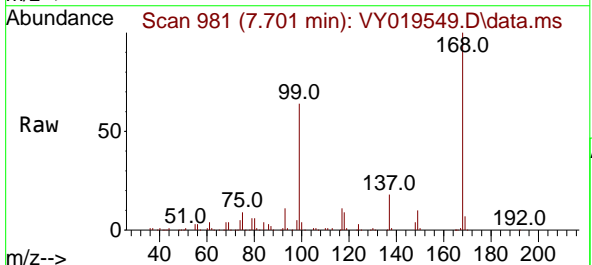


Tgt Ion: 113 Resp: 213896

Ion	Ratio	Lower	Upper
113	100		
111	101.6	82.2	123.4
192	17.9	15.9	23.9

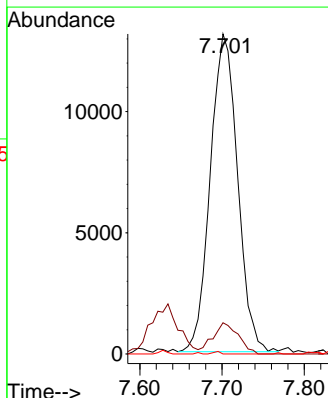
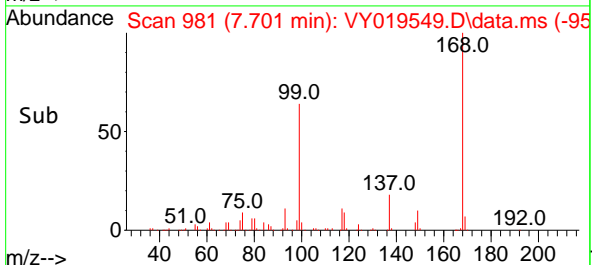


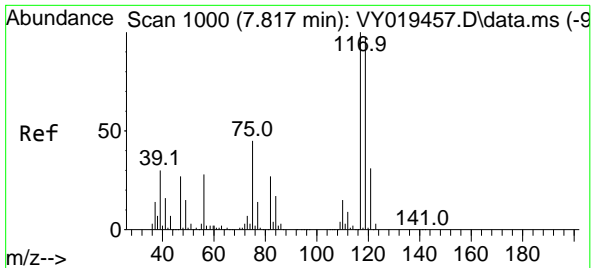
#36
 1,1-Dichloropropene
 Concen: 5.848 ug/l
 RT: 7.701 min Scan# 981
 Delta R.T. -0.134 min
 Lab File: VY019549.D
 Acq: 13 Sep 2024 19:06



Tgt Ion: 75 Resp: 30244

Ion	Ratio	Lower	Upper
75	100		
110	9.2	19.0	57.0#
77	0.2	25.3	37.9#

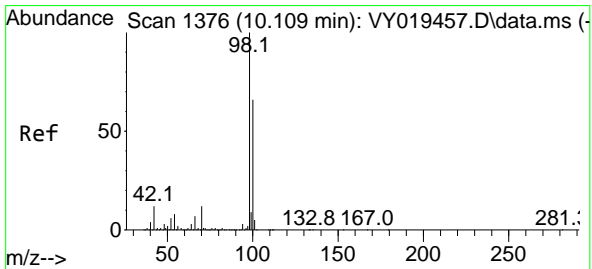
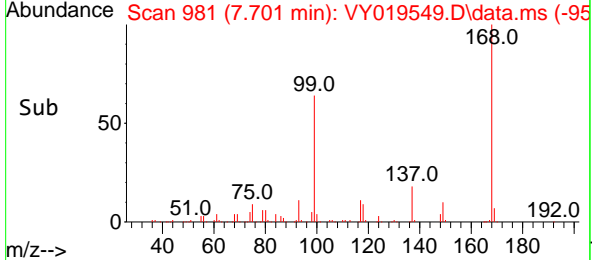
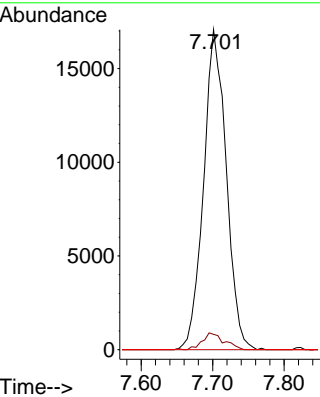
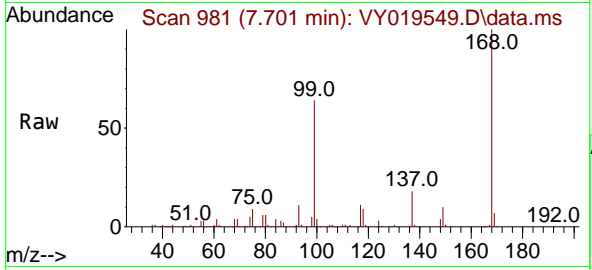




#38
 Carbon Tetrachloride
 Concen: 6.443 ug/l
 RT: 7.701 min Scan# 91
 Delta R.T. -0.116 min
 Lab File: VY019549.D
 Acq: 13 Sep 2024 19:06

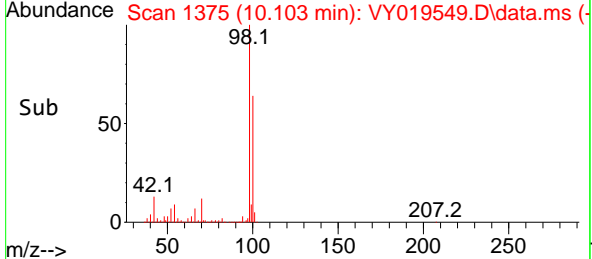
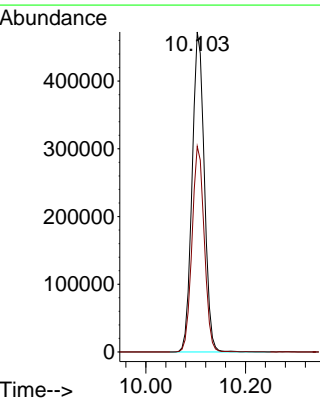
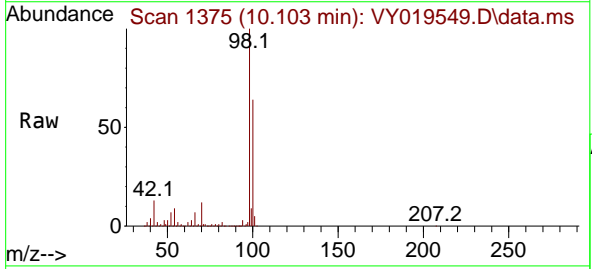
Instrument : MSVOA_Y
 ClientSampleId : OK-02-09132024

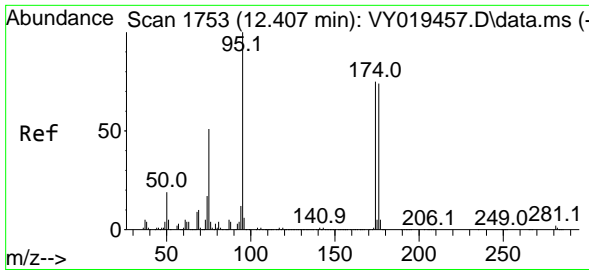
Tgt Ion	Resp	Lower	Upper
117	37581		
119	4.8	75.8	113.6#
121	0.0	24.0	36.0#



#50
 Toluene-d8
 Concen: 57.040 ug/l
 RT: 10.103 min Scan# 1375
 Delta R.T. -0.006 min
 Lab File: VY019549.D
 Acq: 13 Sep 2024 19:06

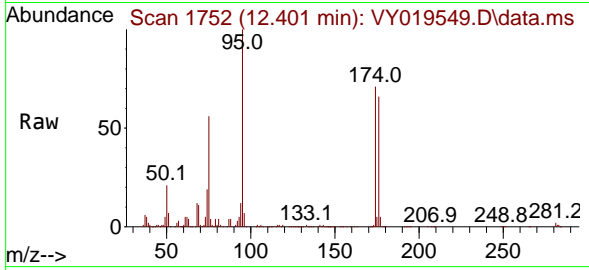
Tgt Ion	Resp	Lower	Upper
98	801934		
100	64.5	52.0	78.0



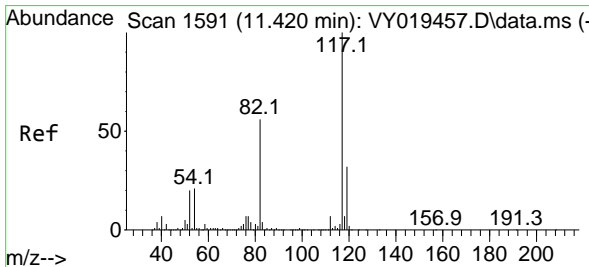
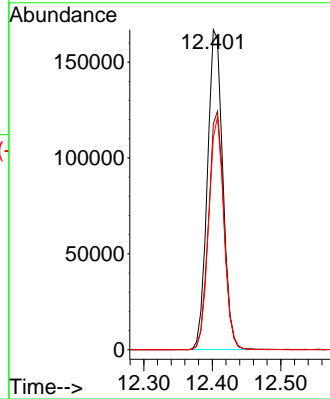
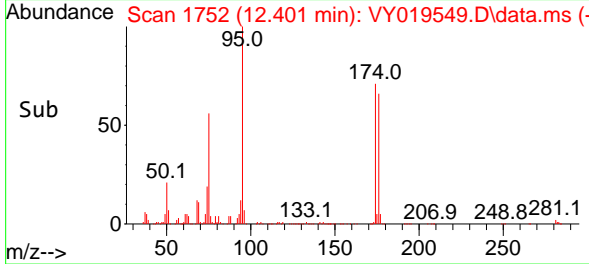


#62
 4-Bromofluorobenzene
 Concen: 48.370 ug/l
 RT: 12.401 min Scan# 11
 Delta R.T. -0.006 min
 Lab File: VY019549.D
 Acq: 13 Sep 2024 19:06

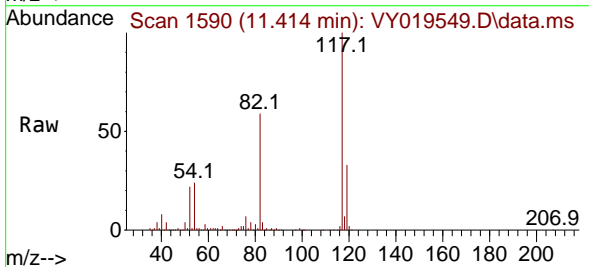
Instrument :
 MSVOA_Y
 ClientSampleId :
 OK-02-09132024



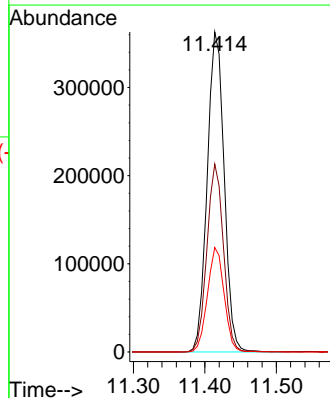
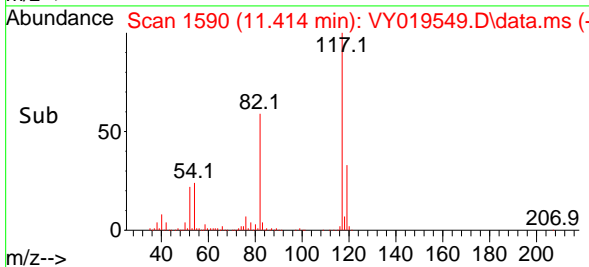
Tgt Ion: 95 Resp: 261477
 Ion Ratio Lower Upper
 95 100
 174 74.6 0.0 175.6
 176 71.7 0.0 171.4

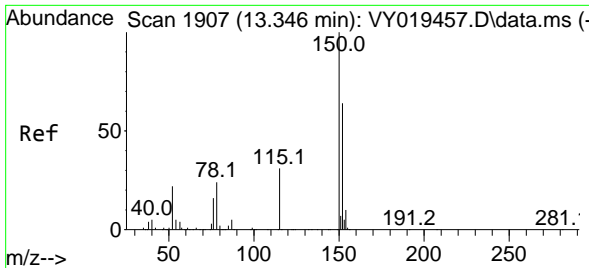


#63
 Chlorobenzene-d5
 Concen: 50.000 ug/l
 RT: 11.414 min Scan# 1590
 Delta R.T. -0.006 min
 Lab File: VY019549.D
 Acq: 13 Sep 2024 19:06



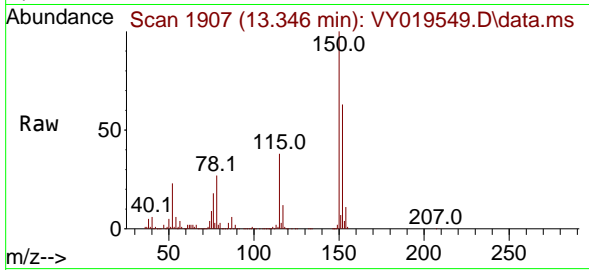
Tgt Ion: 117 Resp: 597781
 Ion Ratio Lower Upper
 117 100
 82 58.7 42.4 63.6
 119 32.7 25.9 38.9



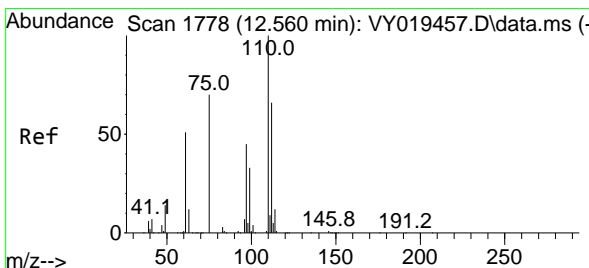
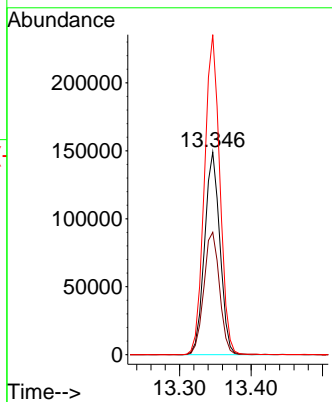
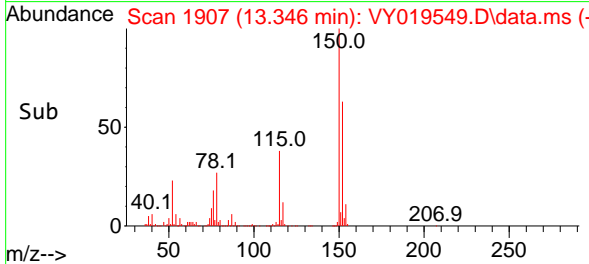


#72
 1,4-Dichlorobenzene-d4
 Concen: 50.000 ug/l
 RT: 13.346 min Scan# 1907
 Delta R.T. 0.000 min
 Lab File: VY019549.D
 Acq: 13 Sep 2024 19:06

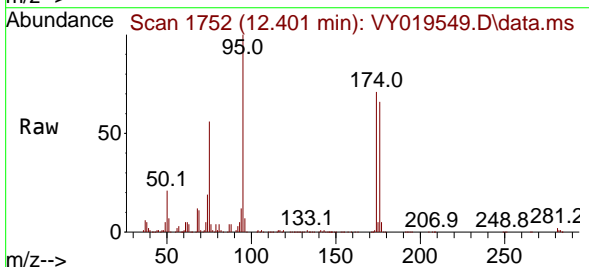
Instrument : MSVOA_Y
 ClientSampleId : OK-02-09132024



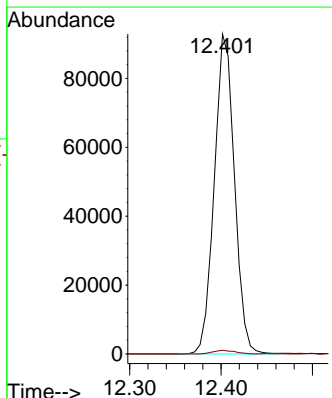
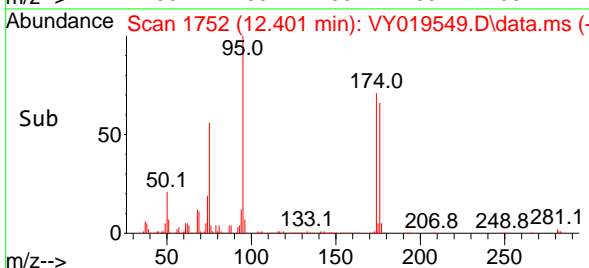
Tgt Ion:152 Resp: 221796
 Ion Ratio Lower Upper
 152 100
 115 61.9 28.2 84.7
 150 159.1 0.0 345.6

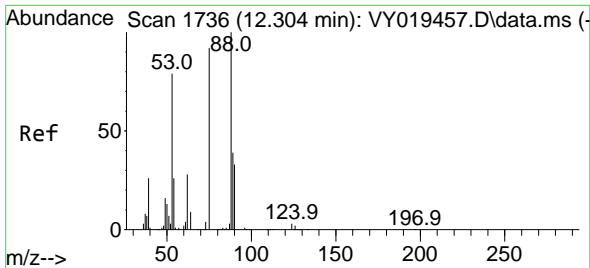


#76
 1,2,3-Trichloropropane
 Concen: 68.448 ug/l
 RT: 12.401 min Scan# 1752
 Delta R.T. -0.158 min
 Lab File: VY019549.D
 Acq: 13 Sep 2024 19:06



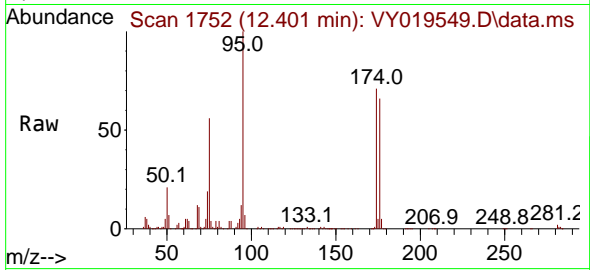
Tgt Ion: 75 Resp: 142295
 Ion Ratio Lower Upper
 75 100
 77 1.2 0.0 0.0#





#81
 trans-1,4-Dichloro-2-butene
 Concen: 131.401 ug/l
 RT: 12.401 min Scan# 11
 Delta R.T. 0.098 min
 Lab File: VY019549.D
 Acq: 13 Sep 2024 19:06

Instrument :
 MSVOA_Y
 ClientSampleId :
 OK-02-09132024



Tgt Ion: 75 Resp: 142295
 Ion Ratio Lower Upper
 75 100
 53 0.0 66.8 100.2#
 89 0.3 35.8 53.6#

