

Data Path : Z:\voasrv\HPCHEM1\MSVOA_Y\Data\VY091421\
 Data File : VY006011.D
 Acq On : 14 Sep 2021 16:30
 Operator : SY/MD
 Sample : M3726-02
 Misc : 4.99G/5ML/MSVOA_Y/SOIL
 ALS Vial : 18 Sample Multiplier: 1

Instrument :
 MSVOA_Y
 ClientSampled :
 VOC

Quant Time: Sep 15 05:14:53 2021
 Quant Method : Z:\voasrv\HPCHEM1\MSVOA_Y\methods\82Y091421S.M
 Quant Title : SW846 8260
 QLast Update : Wed Sep 15 05:01:47 2021
 Response via : Initial Calibration

Compound	R.T.	QIon	Response	Conc	Units	Dev(Min)

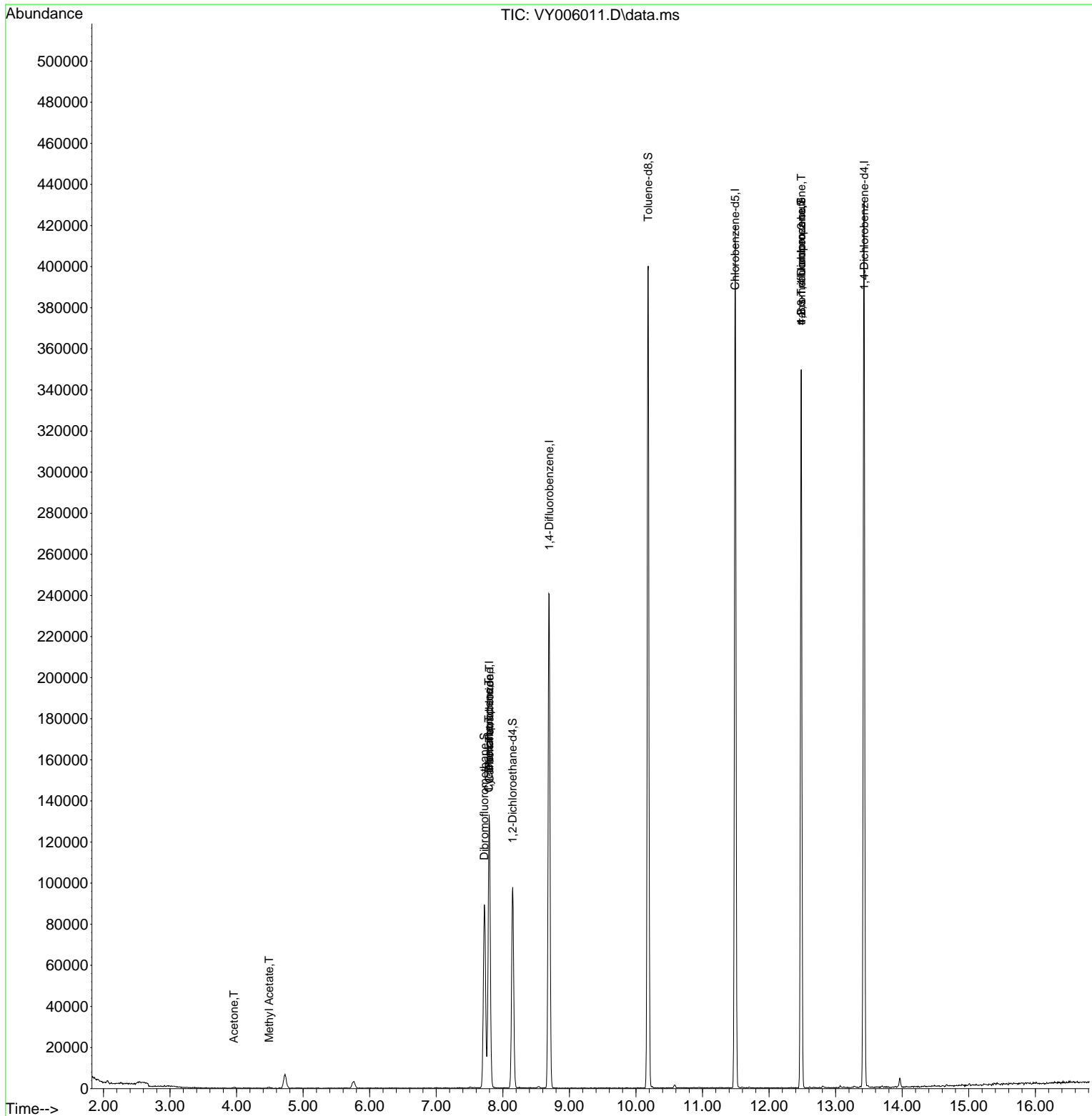
Internal Standards						
1) Pentafluorobenzene	7.795	168	100732	50.000	ug/l	0.00
34) 1,4-Difluorobenzene	8.697	114	193014	50.000	ug/l	0.00
63) Chlorobenzene-d5	11.490	117	206362	50.000	ug/l	0.00
72) 1,4-Dichlorobenzene-d4	13.428	152	105269	50.000	ug/l	0.00
System Monitoring Compounds						
33) 1,2-Dichloroethane-d4	8.149	65	80808	57.752	ug/l	0.00
Spiked Amount	50.000	Range	50 - 163	Recovery	=	115.500%
35) Dibromofluoromethane	7.722	113	59207	49.387	ug/l	0.00
Spiked Amount	50.000	Range	54 - 147	Recovery	=	98.780%
50) Toluene-d8	10.185	98	255195	49.945	ug/l	0.00
Spiked Amount	50.000	Range	49 - 140	Recovery	=	99.880%
62) 4-Bromofluorobenzene	12.483	95	93222	53.737	ug/l	0.00
Spiked Amount	50.000	Range	25 - 144	Recovery	=	107.480%
Target Compounds						
					Qvalue	
11) Tert butyl alcohol	4.966	59	24	Below Cal	#	77
16) Acetone	3.960	43	701	1.827	ug/l #	89
18) Methyl Acetate	4.491	43	1045	1.081	ug/l #	75
20) Methylene Chloride	4.722	84	4416	Below Cal		93
31) Cyclohexane	7.789	56	2671	1.192	ug/l #	48
36) 1,1-Dichloropropene	7.789	75	8244	3.957	ug/l #	52
38) Carbon Tetrachloride	7.801	117	10161	4.480	ug/l #	15
76) 1,2,3-Trichloropropane	12.483	75	56222	50.092	ug/l #	100
81) trans-1,4-Dichloro-2-b...	12.483	75	56222	92.095	ug/l #	7

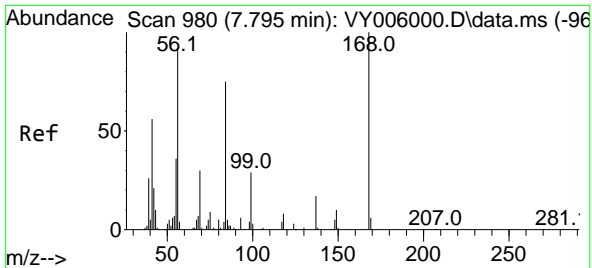
(#) = qualifier out of range (m) = manual integration (+) = signals summed

Data Path : Z:\voasrv\HPCHEM1\MSVOA_Y\Data\VY091421\
 Data File : VY006011.D
 Acq On : 14 Sep 2021 16:30
 Operator : SY/MD
 Sample : M3726-02
 Misc : 4.99G/5ML/MSVOA_Y/SOIL
 ALS Vial : 18 Sample Multiplier: 1

Instrument :
 MSVOA_Y
 ClientSampled :
 VOC

Quant Time: Sep 15 05:14:53 2021
 Quant Method : Z:\voasrv\HPCHEM1\MSVOA_Y\methods\82Y091421S.M
 Quant Title : SW846 8260
 QLast Update : Wed Sep 15 05:01:47 2021
 Response via : Initial Calibration

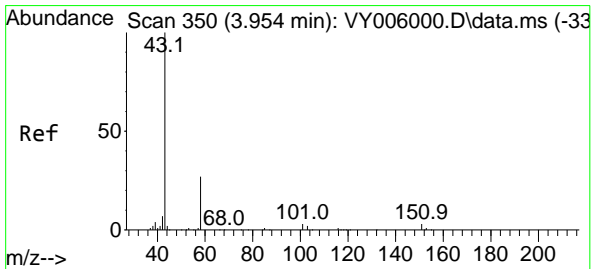
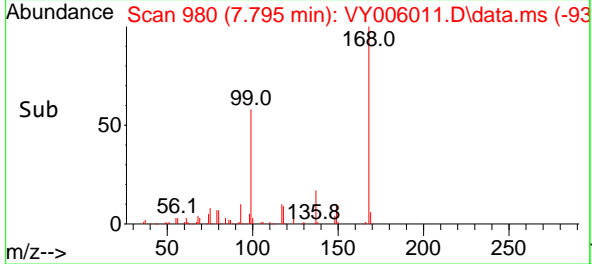
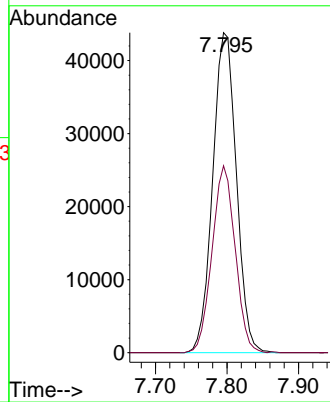
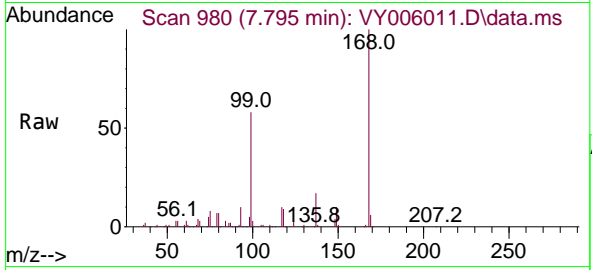




#1
 Pentafluorobenzene
 Concen: 50.000 ug/l
 RT: 7.795 min Scan# 980
 Delta R.T. 0.000 min
 Lab File: VY006011.D
 Acq: 14 Sep 2021 16:30

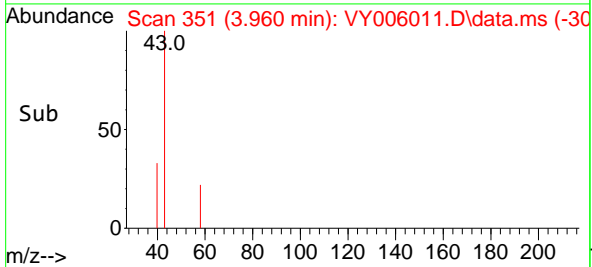
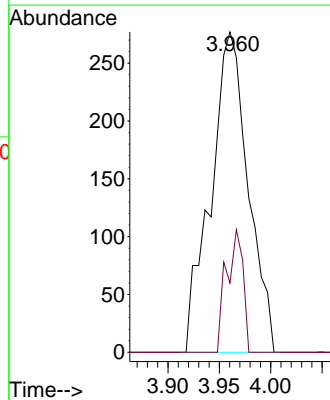
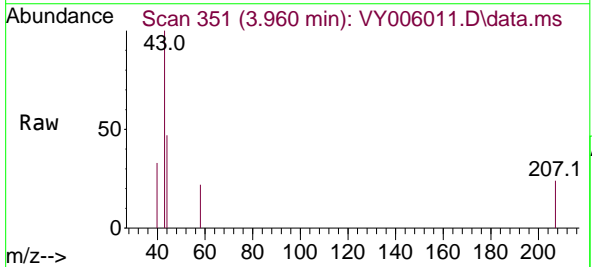
Instrument :
 MSVOA_Y
 ClientSampled :
 VOC

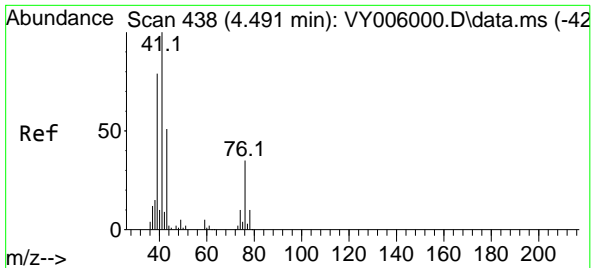
Tgt Ion:168 Resp: 100732
 Ion Ratio Lower Upper
 168 100
 99 58.4 46.9 70.3



#16
 Acetone
 Concen: 1.827 ug/l
 RT: 3.960 min Scan# 351
 Delta R.T. 0.006 min
 Lab File: VY006011.D
 Acq: 14 Sep 2021 16:30

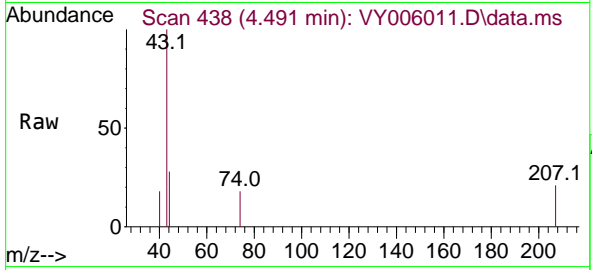
Tgt Ion: 43 Resp: 701
 Ion Ratio Lower Upper
 43 100
 58 21.7 22.0 33.0#



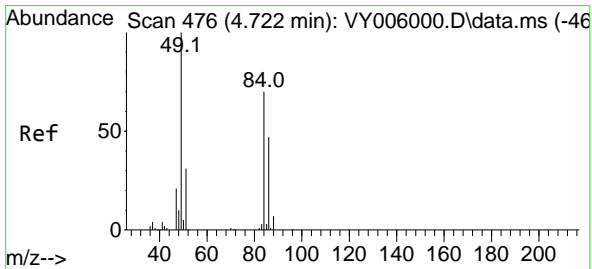
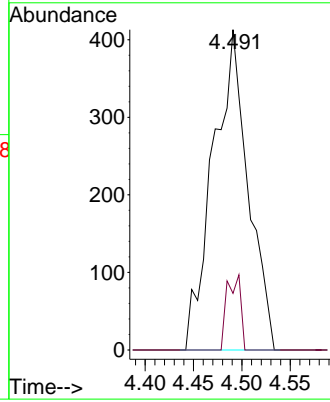
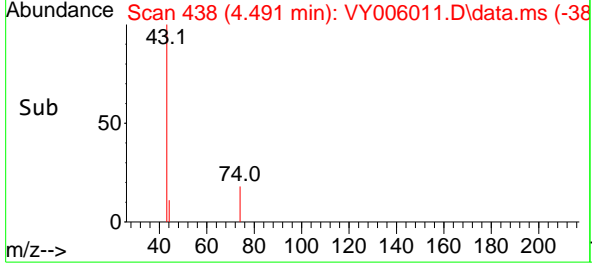


#18
 Methyl Acetate
 Concen: 1.081 ug/l
 RT: 4.491 min Scan# 438
 Delta R.T. 0.000 min
 Lab File: VY006011.D
 Acq: 14 Sep 2021 16:30

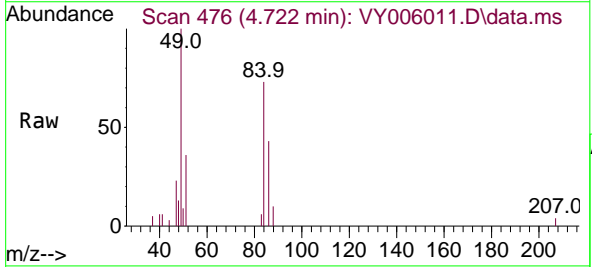
Instrument :
 MSVOA_Y
 ClientSampled :
 VOC



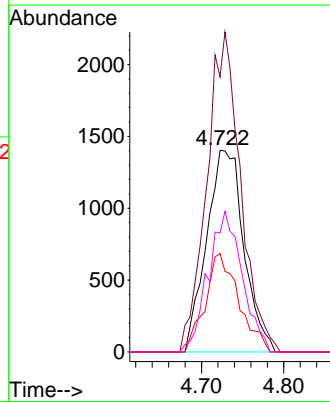
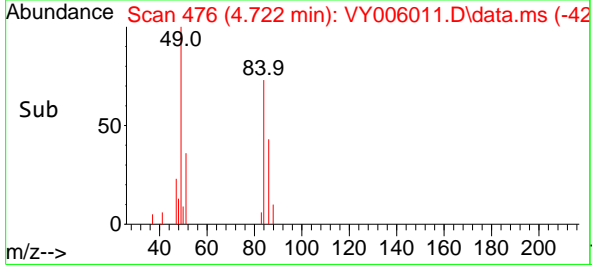
Tgt Ion: 43 Resp: 1045
 Ion Ratio Lower Upper
 43 100
 74 9.1 16.6 24.8#

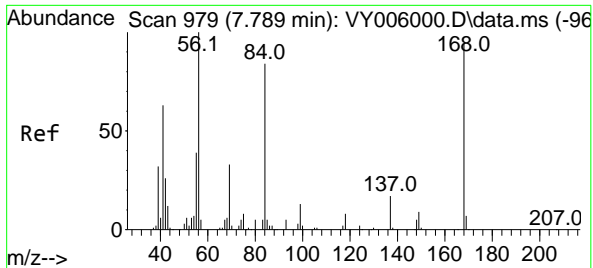


#20
 Methylene Chloride
 Concen: Below Cal
 RT: 4.722 min Scan# 476
 Delta R.T. 0.000 min
 Lab File: VY006011.D
 Acq: 14 Sep 2021 16:30



Tgt Ion: 84 Resp: 4416
 Ion Ratio Lower Upper
 84 100
 49 136.4 114.4 171.6
 51 48.8 35.3 52.9
 86 59.1 53.7 80.5



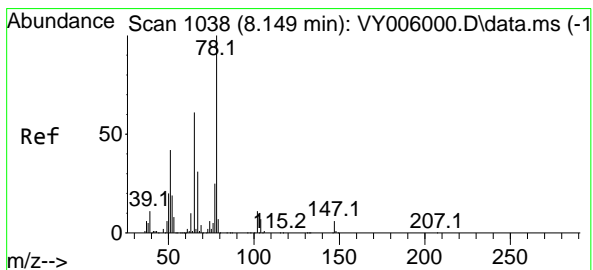
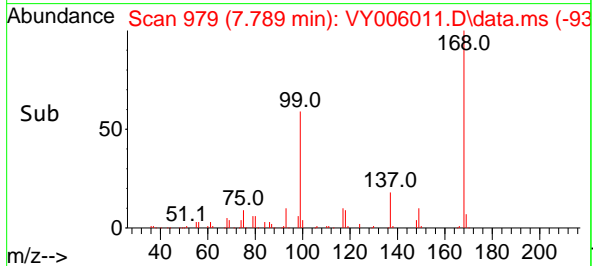
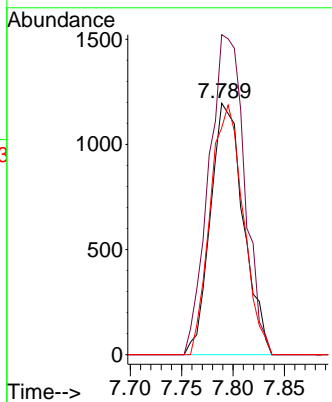
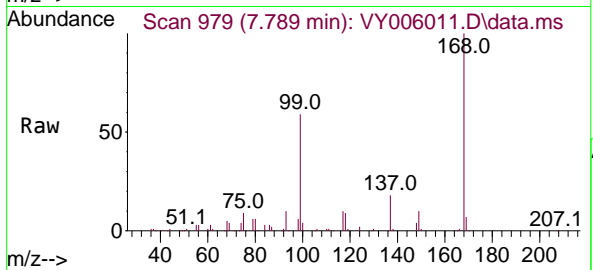


#31
 Cyclohexane
 Concen: 1.192 ug/l
 RT: 7.789 min Scan# 979
 Delta R.T. 0.000 min
 Lab File: VY006011.D
 Acq: 14 Sep 2021 16:30

Instrument :
 MSVOA_Y
 ClientSampled :
 VOC

Tgt Ion: 56 Resp: 2671

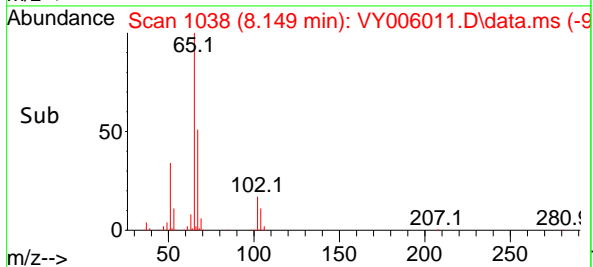
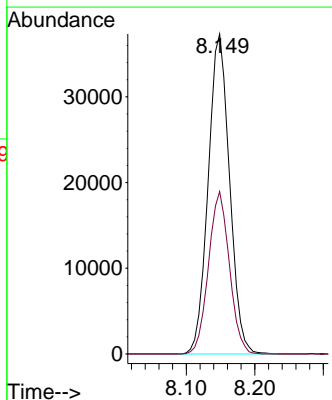
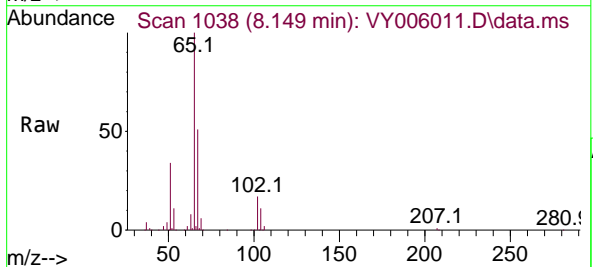
Ion	Ratio	Lower	Upper
56	100		
69	127.3	26.7	40.1#
84	90.2	67.2	100.8

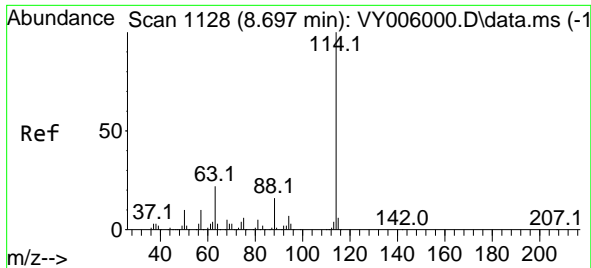


#33
 1,2-Dichloroethane-d4
 Concen: 57.752 ug/l
 RT: 8.149 min Scan# 1038
 Delta R.T. 0.000 min
 Lab File: VY006011.D
 Acq: 14 Sep 2021 16:30

Tgt Ion: 65 Resp: 80808

Ion	Ratio	Lower	Upper
65	100		
67	49.6	0.0	99.4

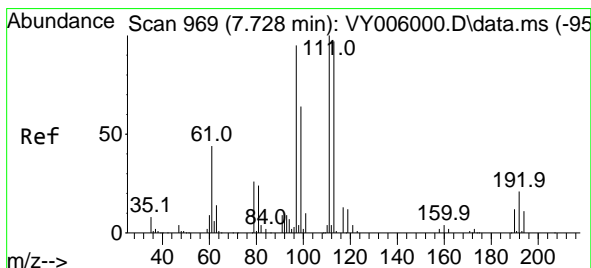
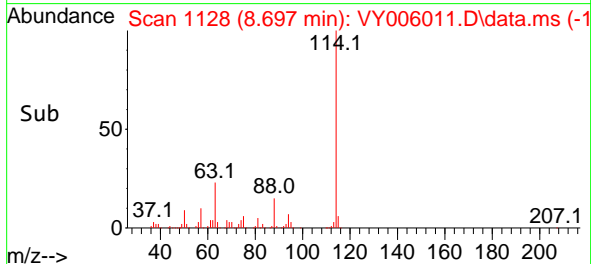
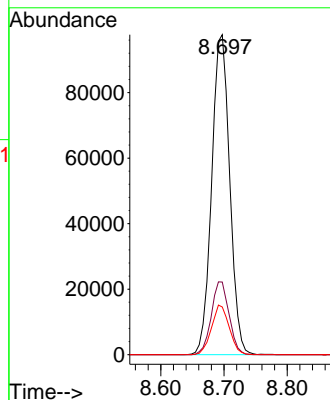
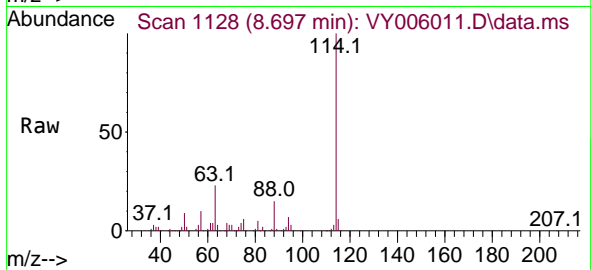




#34
 1,4-Difluorobenzene
 Concen: 50.000 ug/l
 RT: 8.697 min Scan# 1128
 Delta R.T. 0.000 min
 Lab File: VY006011.D
 Acq: 14 Sep 2021 16:30

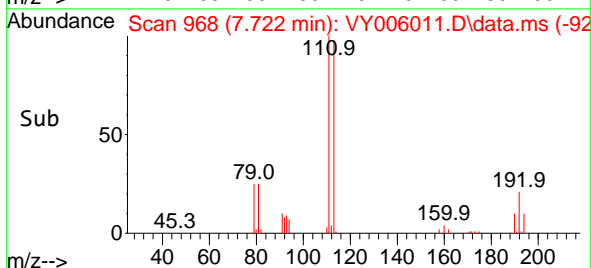
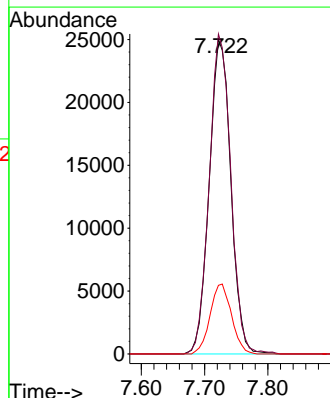
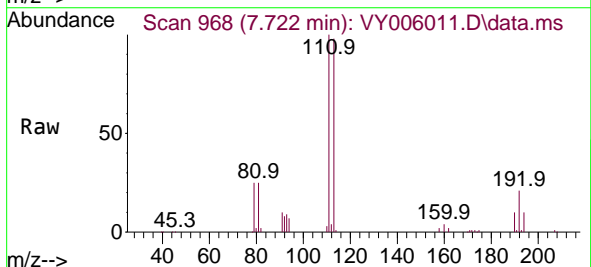
Instrument :
 MSVOA_Y
 ClientSampled :
 VOC

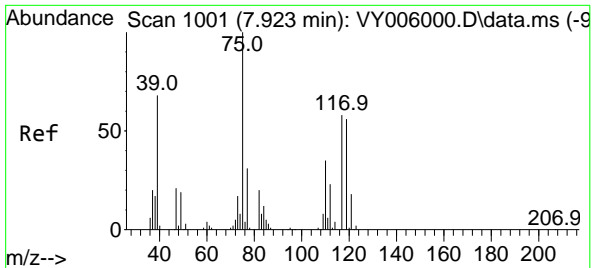
Tgt Ion	Resp	Lower	Upper
114	100		
63	22.7	0.0	43.2
88	14.9	0.0	31.8



#35
 Dibromofluoromethane
 Concen: 49.387 ug/l
 RT: 7.722 min Scan# 968
 Delta R.T. -0.006 min
 Lab File: VY006011.D
 Acq: 14 Sep 2021 16:30

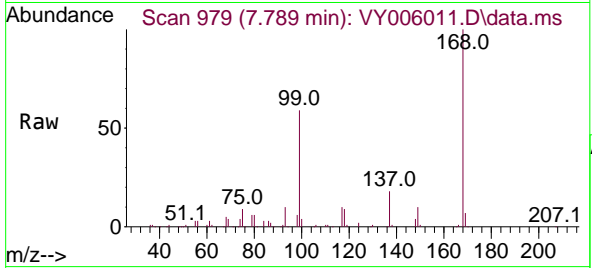
Tgt Ion	Resp	Lower	Upper
113	100		
111	101.8	82.6	124.0
192	22.0	17.6	26.4



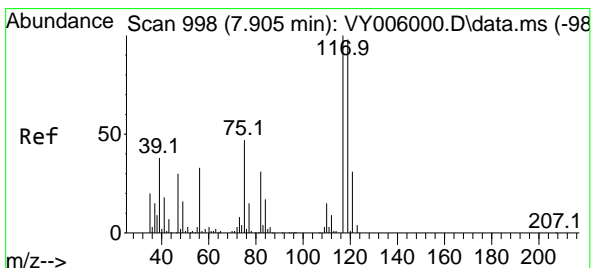
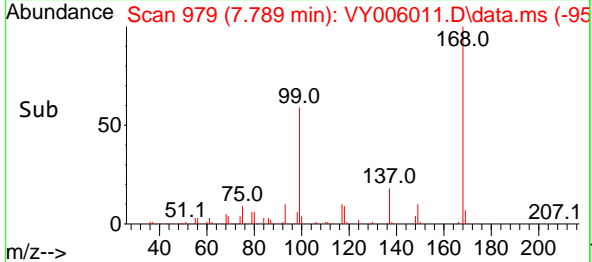
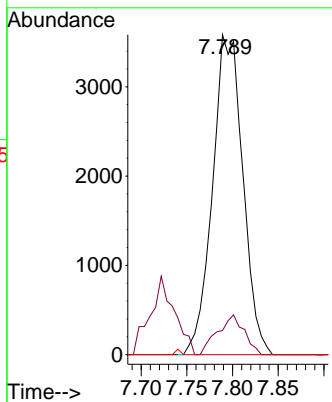


#36
 1,1-Dichloropropene
 Concen: 3.957 ug/l
 RT: 7.789 min Scan# 979
 Delta R.T. -0.134 min
 Lab File: VY006011.D
 Acq: 14 Sep 2021 16:30

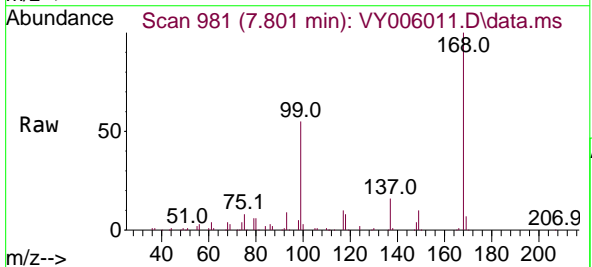
Instrument :
 MSVOA_Y
 ClientSampled :
 VOC



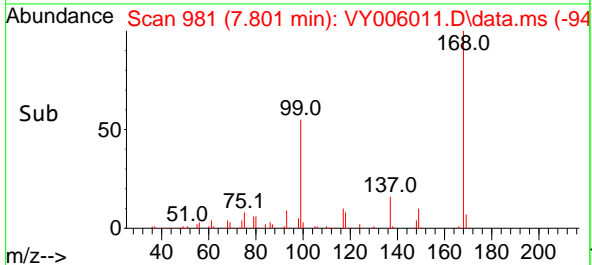
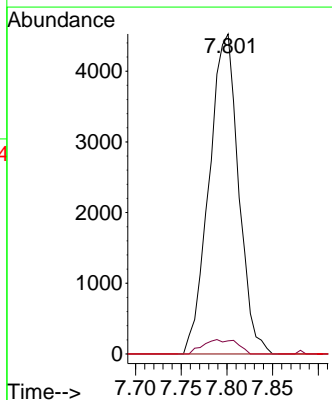
Tgt Ion	Resp	Lower	Upper
75	100		
110	10.9	17.1	51.2#
77	0.0	24.4	36.6#

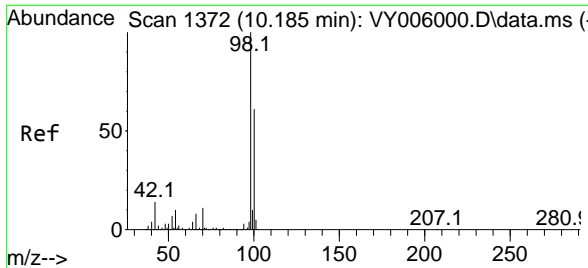


#38
 Carbon Tetrachloride
 Concen: 4.480 ug/l
 RT: 7.801 min Scan# 981
 Delta R.T. -0.104 min
 Lab File: VY006011.D
 Acq: 14 Sep 2021 16:30



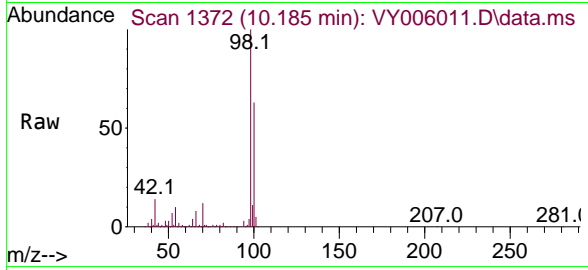
Tgt Ion	Resp	Lower	Upper
117	100		
119	4.1	77.9	116.9#
121	0.0	24.8	37.2#



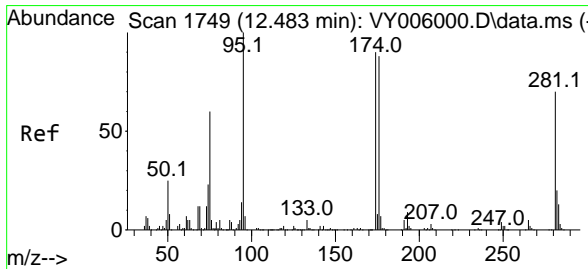
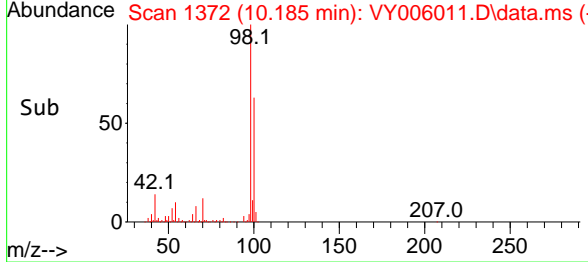
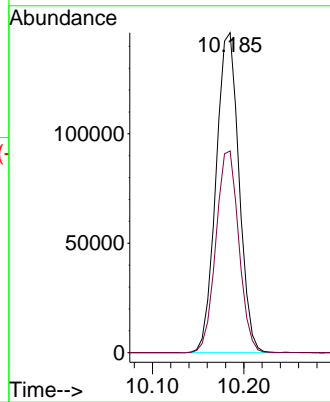


#50
 Toluene-d8
 Concen: 49.945 ug/l
 RT: 10.185 min Scan# 1372
 Delta R.T. 0.000 min
 Lab File: VY006011.D
 Acq: 14 Sep 2021 16:30

Instrument :
 MSVOA_Y
 ClientSampled :
 VOC

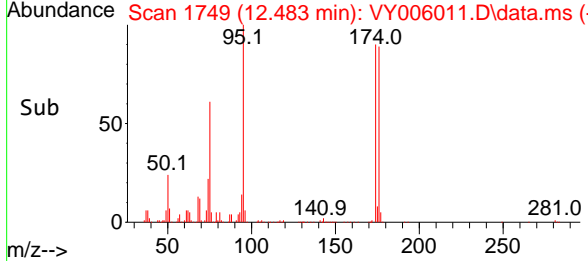
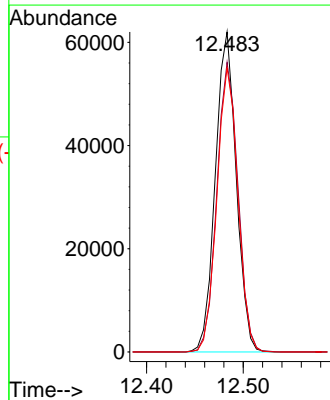
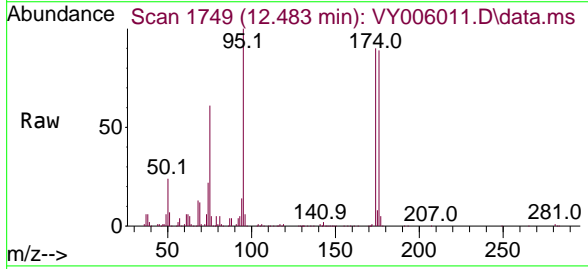


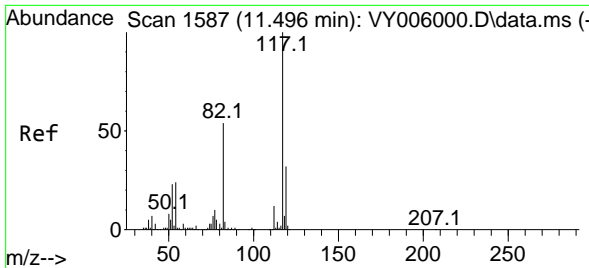
Tgt Ion: 98 Resp: 255195
 Ion Ratio Lower Upper
 98 100
 100 62.9 50.2 75.2



#62
 4-Bromofluorobenzene
 Concen: 53.737 ug/l
 RT: 12.483 min Scan# 1749
 Delta R.T. 0.000 min
 Lab File: VY006011.D
 Acq: 14 Sep 2021 16:30

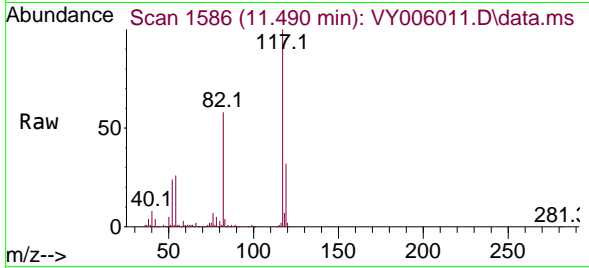
Tgt Ion: 95 Resp: 93222
 Ion Ratio Lower Upper
 95 100
 174 91.6 0.0 177.0
 176 89.1 0.0 175.8





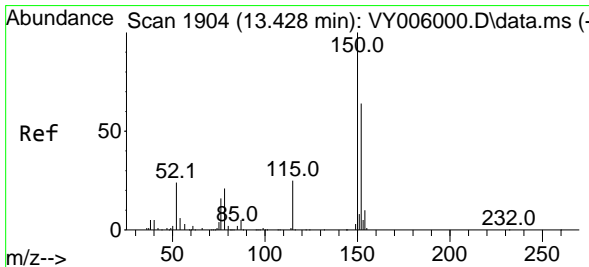
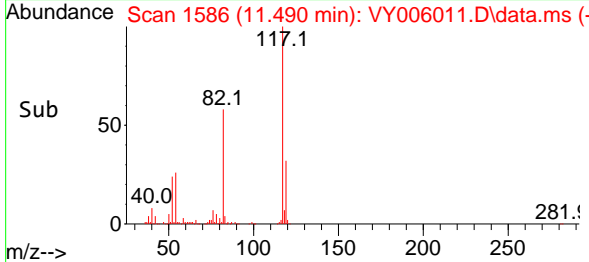
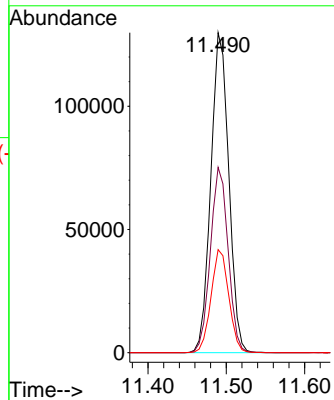
#63
 Chlorobenzene-d5
 Concen: 50.000 ug/l
 RT: 11.490 min Scan# 1586
 Delta R.T. -0.006 min
 Lab File: VY006011.D
 Acq: 14 Sep 2021 16:30

Instrument :
 MSVOA_Y
 ClientSampled :
 VOC

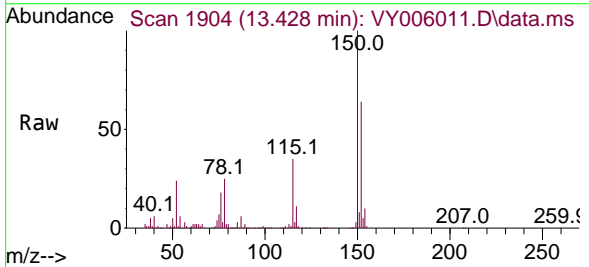


Tgt Ion:117 Resp: 206362

Ion	Ratio	Lower	Upper
117	100		
82	57.9	43.0	64.4
119	32.2	25.4	38.0

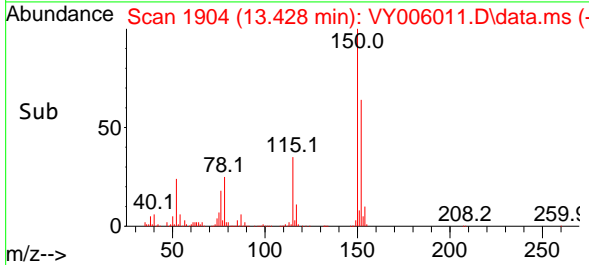
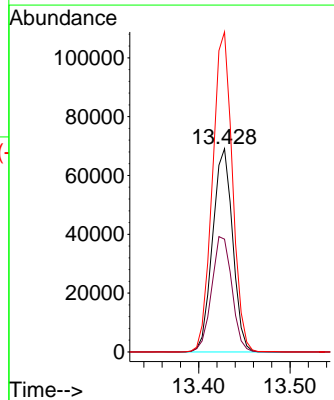


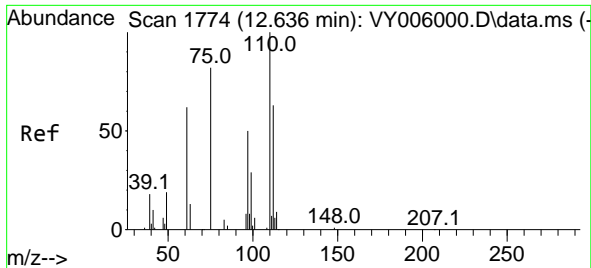
#72
 1,4-Dichlorobenzene-d4
 Concen: 50.000 ug/l
 RT: 13.428 min Scan# 1904
 Delta R.T. 0.000 min
 Lab File: VY006011.D
 Acq: 14 Sep 2021 16:30



Tgt Ion:152 Resp: 105269

Ion	Ratio	Lower	Upper
152	100		
115	57.4	28.2	84.7
150	156.5	0.0	347.6

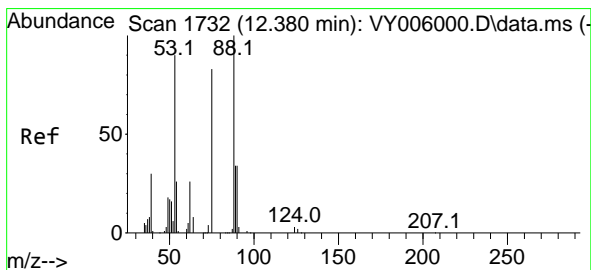
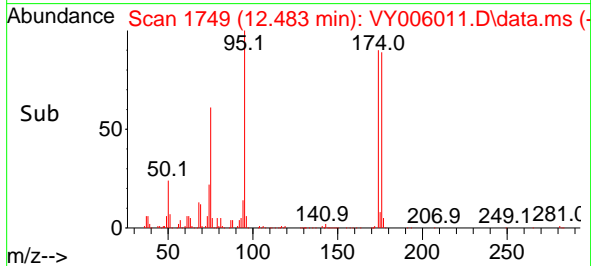
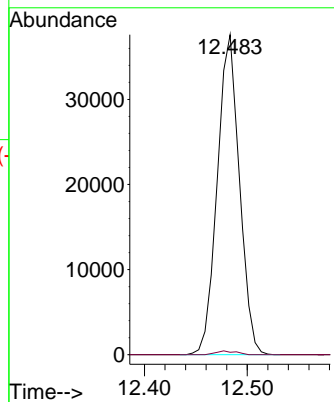
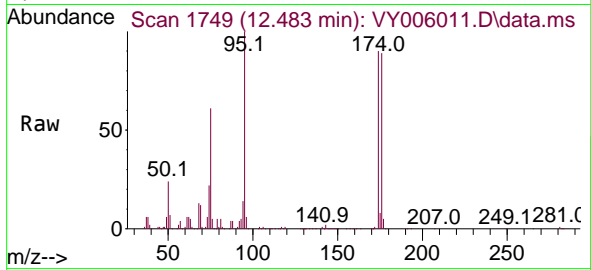




#76
 1,2,3-Trichloropropane
 Concen: 50.092 ug/l
 RT: 12.483 min Scan# 1749
 Delta R.T. -0.152 min
 Lab File: VY006011.D
 Acq: 14 Sep 2021 16:30

Instrument :
 MSVOA_Y
 ClientSampled :
 VOC

Tgt Ion: 75 Resp: 56222
 Ion Ratio Lower Upper
 75 100
 77 1.1 0.0 0.0#



#81
 trans-1,4-Dichloro-2-butene
 Concen: 92.095 ug/l
 RT: 12.483 min Scan# 1749
 Delta R.T. 0.104 min
 Lab File: VY006011.D
 Acq: 14 Sep 2021 16:30

Tgt Ion: 75 Resp: 56222
 Ion Ratio Lower Upper
 75 100
 53 0.0 85.3 127.9#
 89 0.0 37.0 55.4#

