

Data Path : Z:\voasrv\HPCHEM1\MSVOA_Y\Data\VY091422\
 Data File : VY010495.D
 Acq On : 14 Sep 2022 19:31
 Operator : KP/MD
 Sample : N4592-01
 Misc : 5.02g/5.0mL/MSVOA_Y/SOIL
 ALS Vial : 23 Sample Multiplier: 1

Instrument :
 MSVOA_Y
 ClientSampleId :
 EO-02-091222

Quant Time: Sep 15 01:11:59 2022
 Quant Method : Z:\voasrv\HPCHEM1\MSVOA_Y\methods\82Y090922S.M
 Quant Title : SW846 8260
 QLast Update : Fri Sep 09 17:08:30 2022
 Response via : Initial Calibration

Compound	R.T.	QIon	Response	Conc	Units	Dev(Min)

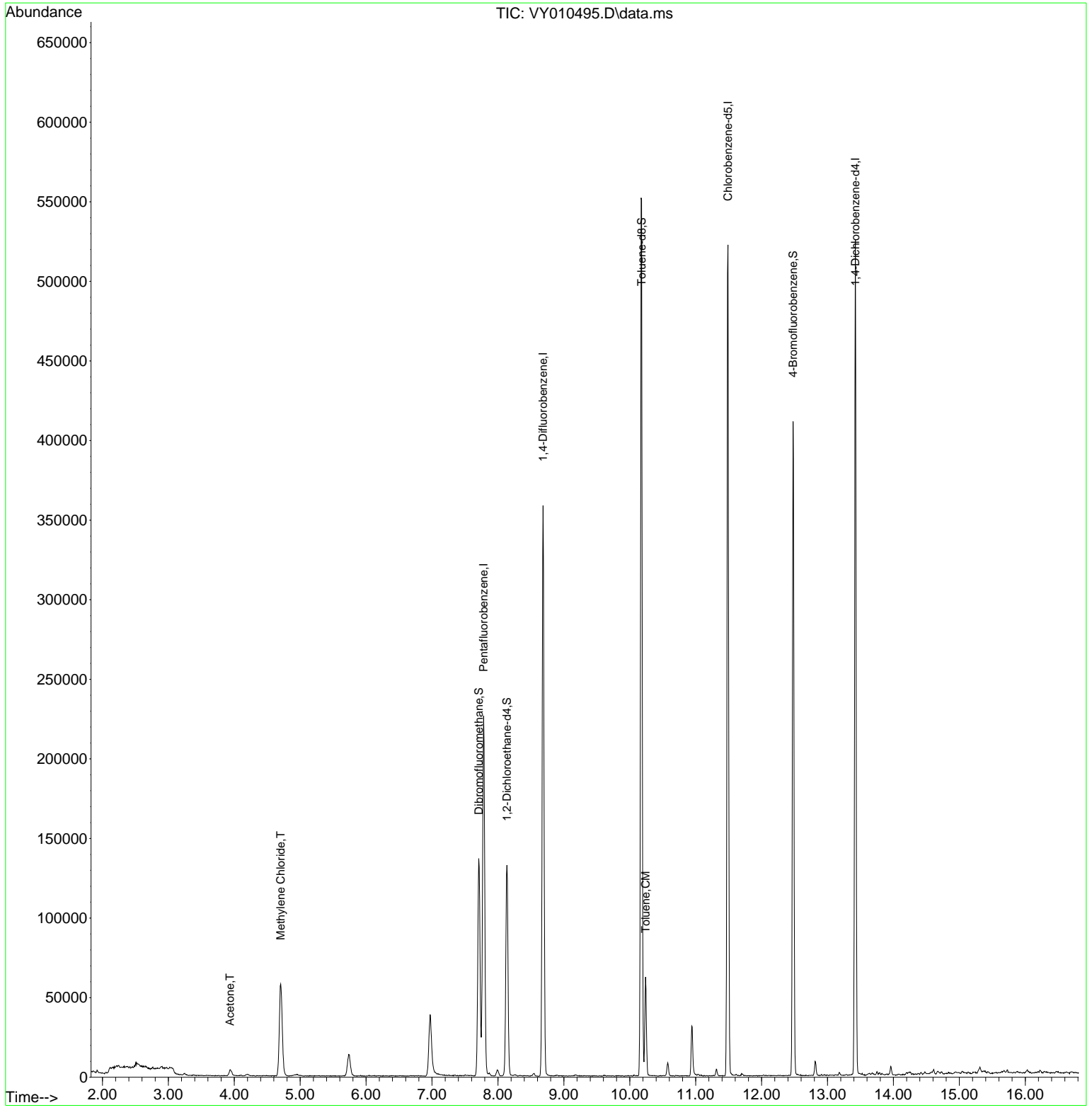
Internal Standards						
1) Pentafluorobenzene	7.783	168	177301	50.000	ug/l	0.00
34) 1,4-Difluorobenzene	8.685	114	309945	50.000	ug/l	0.00
63) Chlorobenzene-d5	11.490	117	293356	50.000	ug/l	0.00
72) 1,4-Dichlorobenzene-d4	13.422	152	134022	50.000	ug/l	0.00
System Monitoring Compounds						
33) 1,2-Dichloroethane-d4	8.136	65	105526	59.095	ug/l	0.00
Spiked Amount	50.000	Range	50 - 163	Recovery	=	118.180%
35) Dibromofluoromethane	7.710	113	98249	44.633	ug/l	0.00
Spiked Amount	50.000	Range	54 - 147	Recovery	=	89.260%
50) Toluene-d8	10.179	98	367652	51.534	ug/l	0.00
Spiked Amount	50.000	Range	49 - 140	Recovery	=	103.060%
62) 4-Bromofluorobenzene	12.477	95	123760	42.890	ug/l	0.00
Spiked Amount	50.000	Range	25 - 144	Recovery	=	85.780%
Target Compounds						
						Qvalue
16) Acetone	3.936	43	7069	17.250	ug/l	95
20) Methylene Chloride	4.704	84	45271	18.483	ug/l #	84
52) Toluene	10.240	92	25444	4.482	ug/l	96

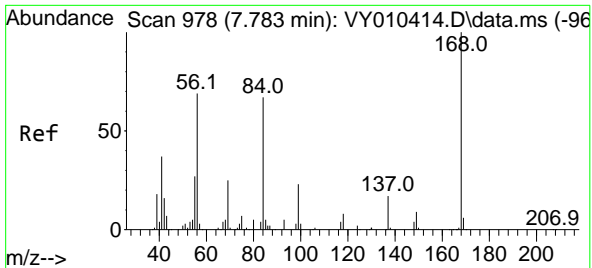
(#) = qualifier out of range (m) = manual integration (+) = signals summed

Data Path : Z:\voasrv\HPCHEM1\MSVOA_Y\Data\VY091422\
 Data File : VY010495.D
 Acq On : 14 Sep 2022 19:31
 Operator : KP/MD
 Sample : N4592-01
 Misc : 5.02g/5.0mL/MSVOA_Y/SOIL
 ALS Vial : 23 Sample Multiplier: 1

Instrument :
 MSVOA_Y
ClientSampleId :
 EO-02-091222

Quant Time: Sep 15 01:11:59 2022
 Quant Method : Z:\voasrv\HPCHEM1\MSVOA_Y\methods\82Y090922S.M
 Quant Title : SW846 8260
 QLast Update : Fri Sep 09 17:08:30 2022
 Response via : Initial Calibration

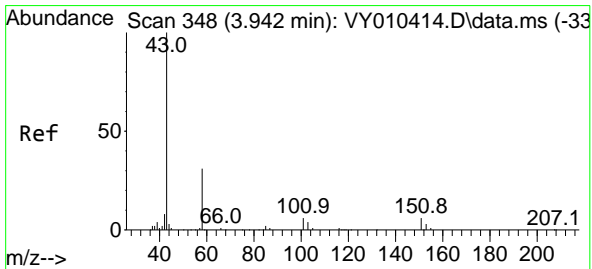
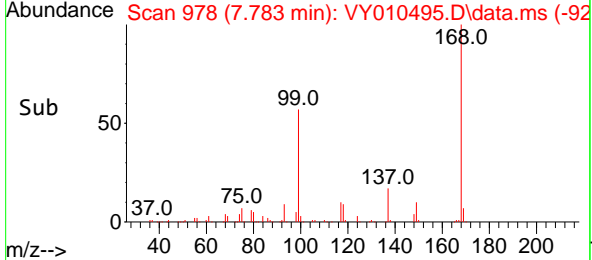
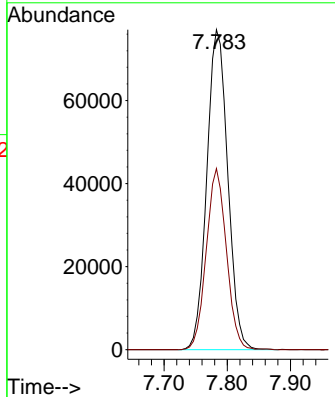
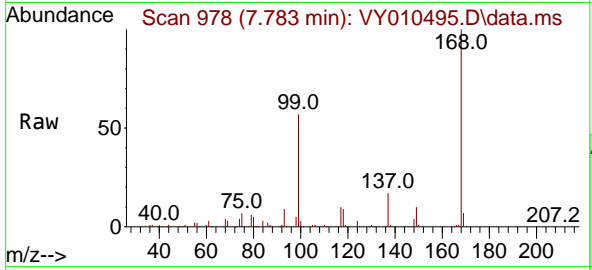




#1
 Pentafluorobenzene
 Concen: 50.000 ug/l
 RT: 7.783 min Scan# 91
 Delta R.T. -0.000 min
 Lab File: VY010495.D
 Acq: 14 Sep 2022 19:31

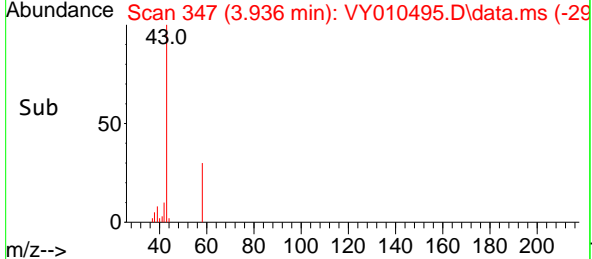
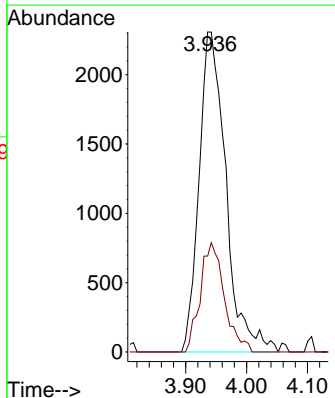
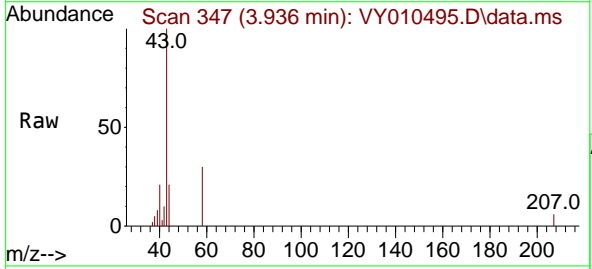
Instrument : MSVOA_Y
 ClientSampleId : EO-02-091222

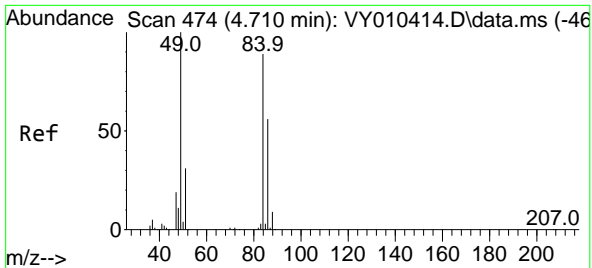
Tgt Ion:168 Resp: 177301
 Ion Ratio Lower Upper
 168 100
 99 56.6 46.9 70.3



#16
 Acetone
 Concen: 17.250 ug/l
 RT: 3.936 min Scan# 347
 Delta R.T. -0.006 min
 Lab File: VY010495.D
 Acq: 14 Sep 2022 19:31

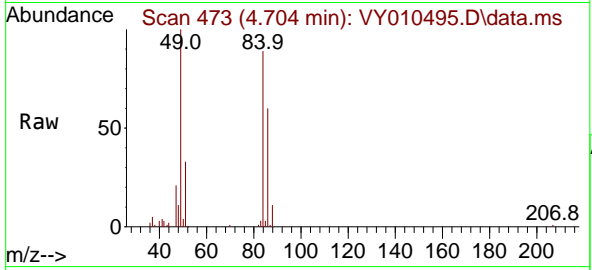
Tgt Ion: 43 Resp: 7069
 Ion Ratio Lower Upper
 43 100
 58 30.0 22.0 33.0





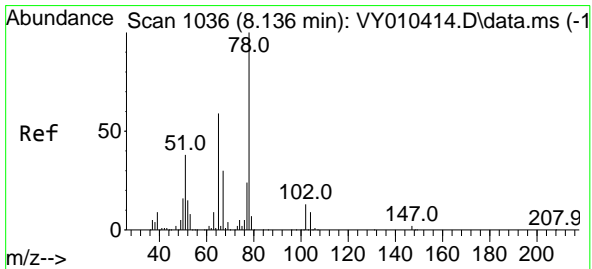
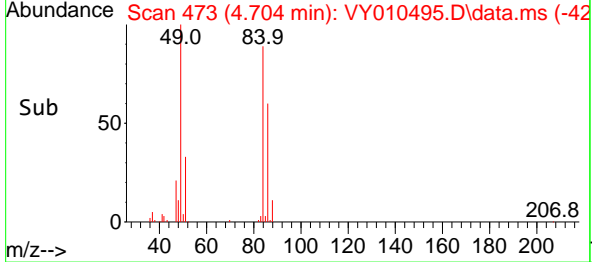
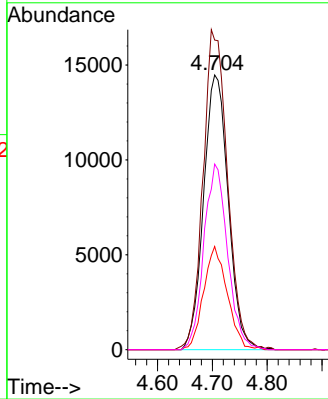
#20
 Methylene Chloride
 Concen: 18.483 ug/l
 RT: 4.704 min Scan# 41
 Delta R.T. -0.006 min
 Lab File: VY010495.D
 Acq: 14 Sep 2022 19:31

Instrument :
 MSVOA_Y
 ClientSampleId :
 EO-02-091222



Tgt Ion: 84 Resp: 45271

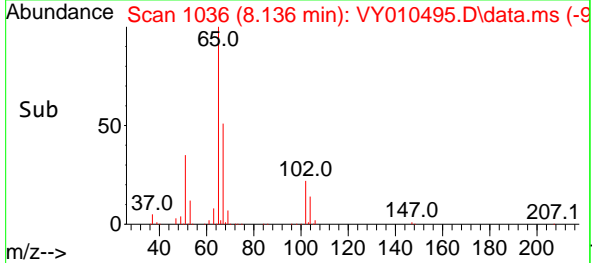
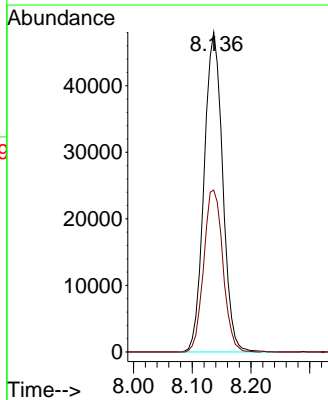
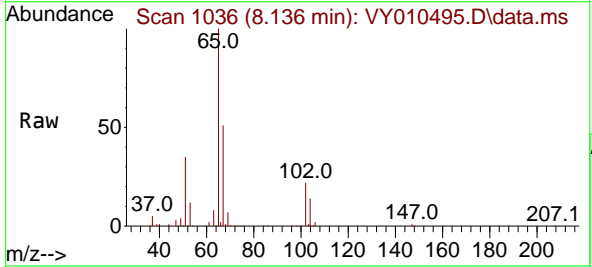
Ion	Ratio	Lower	Upper
84	100		
49	112.7	114.4	171.6#
51	37.6	35.3	52.9
86	67.6	53.7	80.5

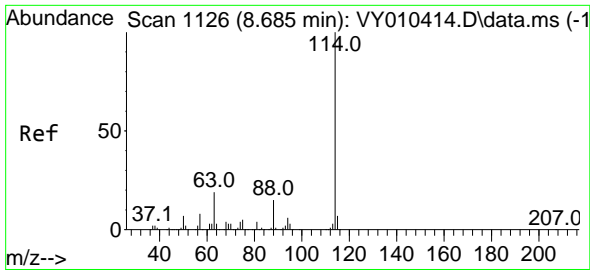


#33
 1,2-Dichloroethane-d4
 Concen: 59.095 ug/l
 RT: 8.136 min Scan# 1036
 Delta R.T. 0.000 min
 Lab File: VY010495.D
 Acq: 14 Sep 2022 19:31

Tgt Ion: 65 Resp: 105526

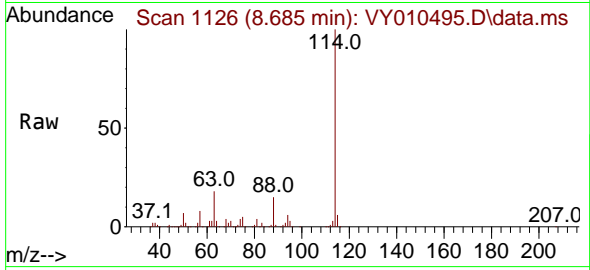
Ion	Ratio	Lower	Upper
65	100		
67	52.3	0.0	99.4



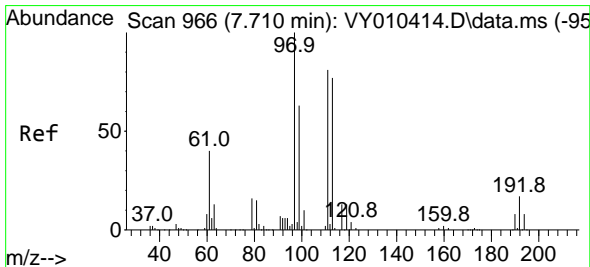
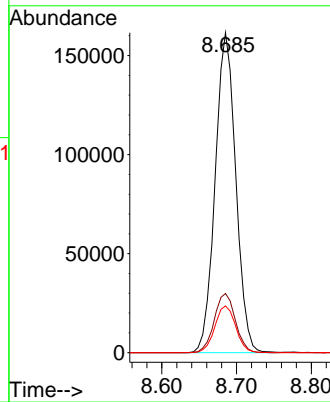
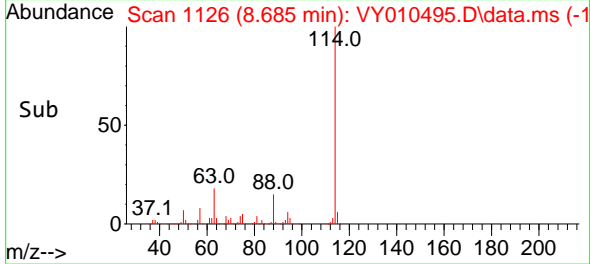


#34
 1,4-Difluorobenzene
 Concen: 50.000 ug/l
 RT: 8.685 min Scan# 1126
 Delta R.T. 0.000 min
 Lab File: VY010495.D
 Acq: 14 Sep 2022 19:31

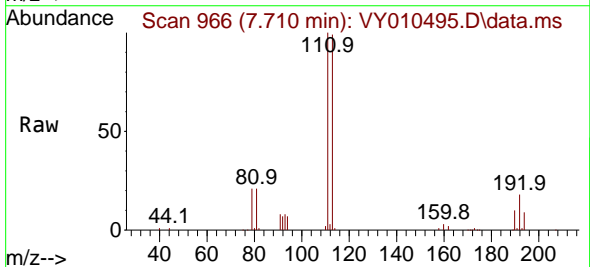
Instrument : MSVOA_Y
 ClientSampleId : EO-02-091222



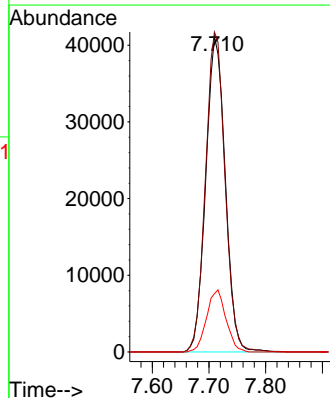
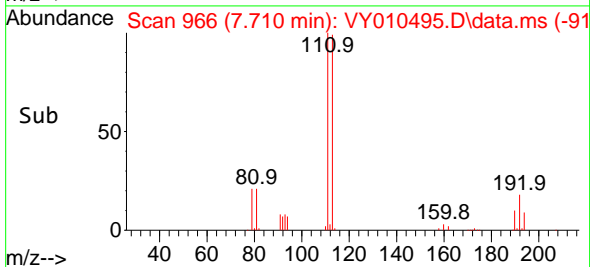
Tgt Ion:114 Resp: 309945
 Ion Ratio Lower Upper
 114 100
 63 18.5 0.0 43.2
 88 14.6 0.0 31.8

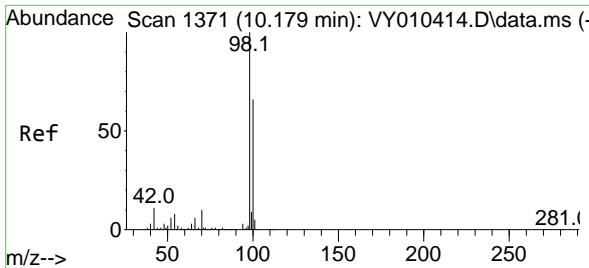


#35
 Dibromofluoromethane
 Concen: 44.633 ug/l
 RT: 7.710 min Scan# 966
 Delta R.T. -0.000 min
 Lab File: VY010495.D
 Acq: 14 Sep 2022 19:31



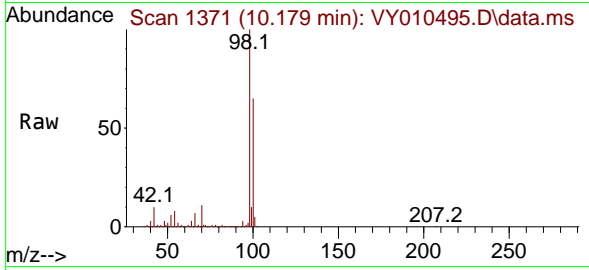
Tgt Ion:113 Resp: 98249
 Ion Ratio Lower Upper
 113 100
 111 101.5 82.6 124.0
 192 19.6 17.6 26.4



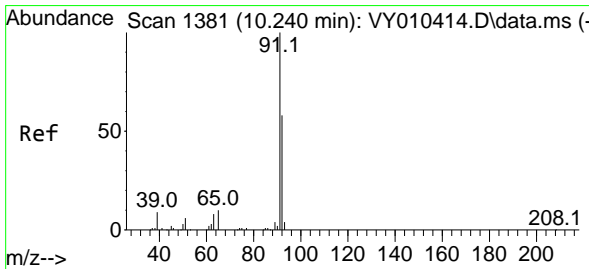
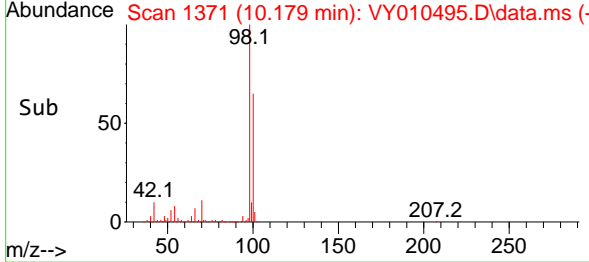
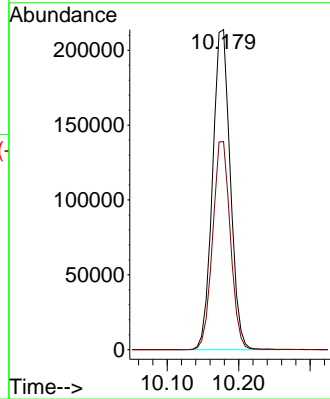


#50
 Toluene-d8
 Concen: 51.534 ug/l
 RT: 10.179 min Scan# 1371
 Delta R.T. -0.000 min
 Lab File: VY010495.D
 Acq: 14 Sep 2022 19:31

Instrument : MSVOA_Y
 ClientSampleId : EO-02-091222

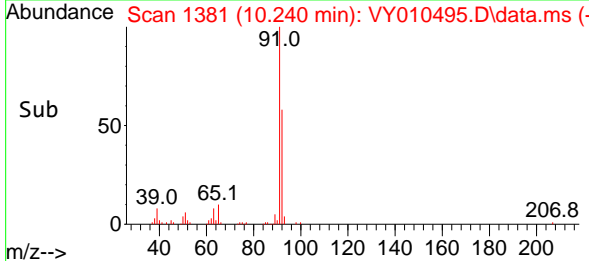
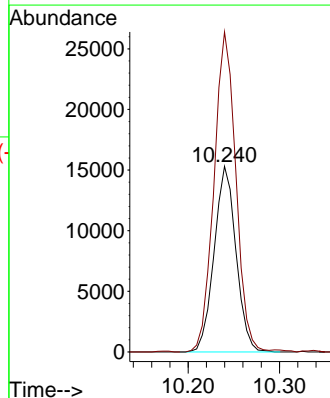
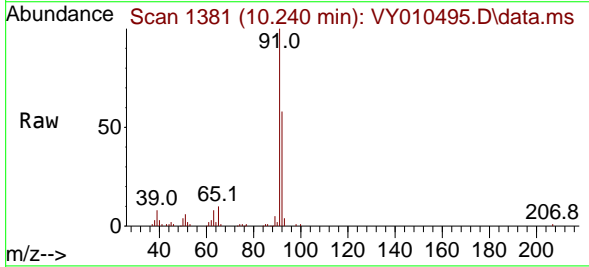


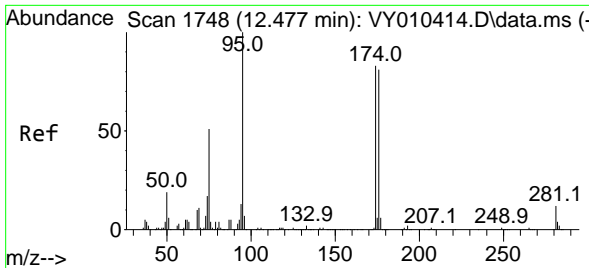
Tgt Ion: 98 Resp: 367652
 Ion Ratio Lower Upper
 98 100
 100 65.1 50.2 75.2



#52
 Toluene
 Concen: 4.482 ug/l
 RT: 10.240 min Scan# 1381
 Delta R.T. -0.000 min
 Lab File: VY010495.D
 Acq: 14 Sep 2022 19:31

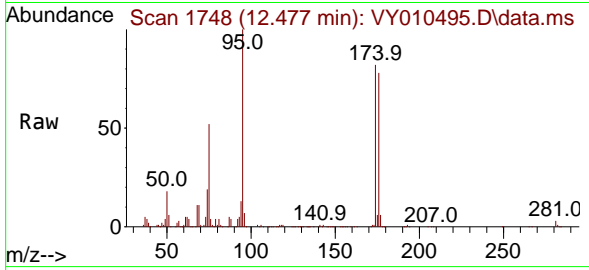
Tgt Ion: 92 Resp: 25444
 Ion Ratio Lower Upper
 92 100
 91 172.4 142.6 213.8



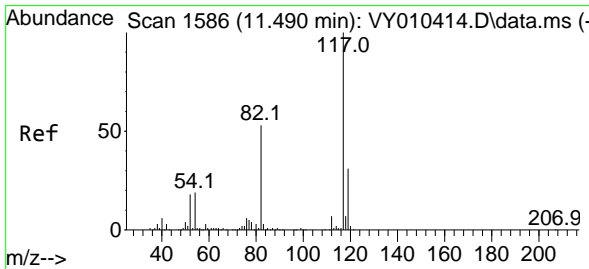
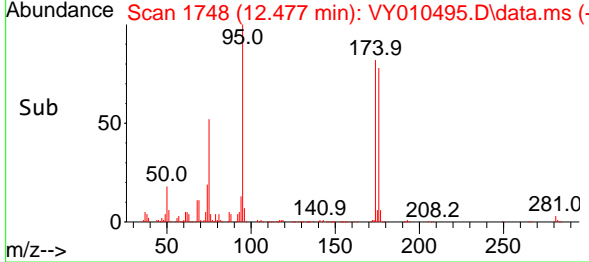
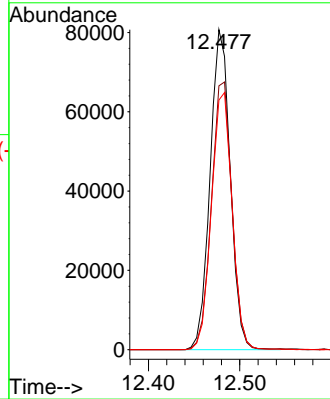


#62
 4-Bromofluorobenzene
 Concen: 42.890 ug/l
 RT: 12.477 min Scan# 11
 Delta R.T. 0.000 min
 Lab File: VY010495.D
 Acq: 14 Sep 2022 19:31

Instrument :
 MSVOA_Y
 ClientSampleId :
 EO-02-091222

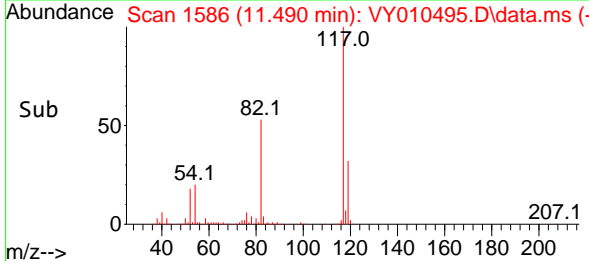
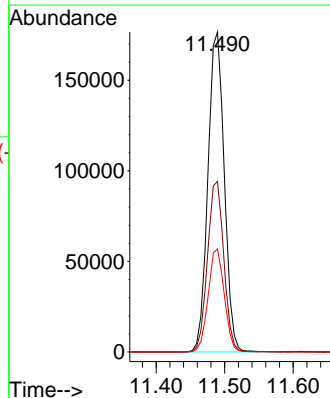
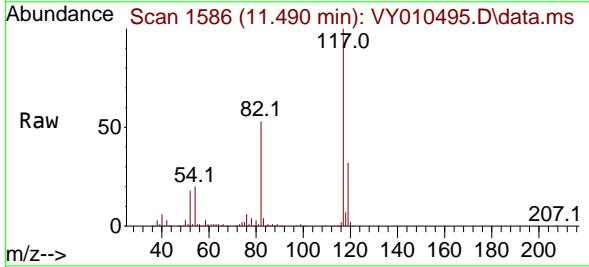


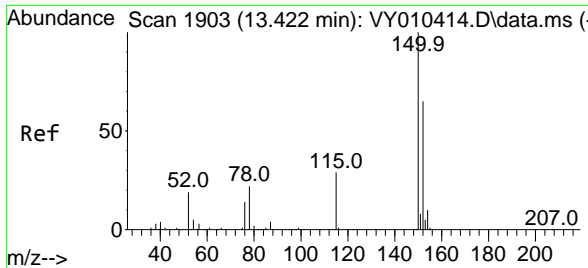
Tgt Ion: 95 Resp: 123760
 Ion Ratio Lower Upper
 95 100
 174 85.5 0.0 177.0
 176 82.6 0.0 175.8



#63
 Chlorobenzene-d5
 Concen: 50.000 ug/l
 RT: 11.490 min Scan# 1586
 Delta R.T. -0.001 min
 Lab File: VY010495.D
 Acq: 14 Sep 2022 19:31

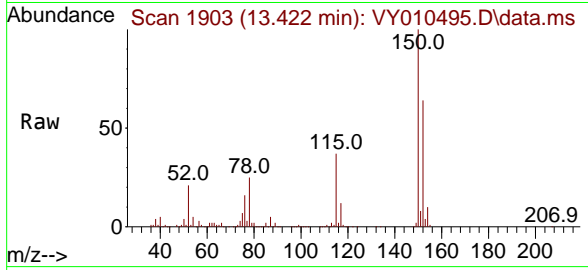
Tgt Ion: 117 Resp: 293356
 Ion Ratio Lower Upper
 117 100
 82 53.3 43.0 64.4
 119 32.3 25.4 38.0





#72
 1,4-Dichlorobenzene-d4
 Concen: 50.000 ug/l
 RT: 13.422 min Scan# 1903
 Delta R.T. 0.000 min
 Lab File: VY010495.D
 Acq: 14 Sep 2022 19:31

Instrument : MSVOA_Y
 ClientSampleId : EO-02-091222



Tgt Ion:152 Resp: 134022

Ion	Ratio	Lower	Upper
152	100		
115	57.8	28.2	84.7
150	156.4	0.0	347.6

