

Data Path : Z:\voasrv\HPCHEM1\MSVOA_Y\Data\VY091423\
 Data File : VY015538.D
 Acq On : 14 Sep 2023 17:03
 Operator : SY/MD
 Sample : 04394-03
 Misc : 5.96g/5.0mL/MSVOA_Y/SOIL
 ALS Vial : 12 Sample Multiplier: 1

Instrument :
 MSVOA_Y
 ClientSampleId :

Quant Time: Sep 15 04:03:08 2023
 Quant Method : Z:\voasrv\HPCHEM1\MSVOA_Y\methods\82Y082923S.M
 Quant Title : SW846 8260
 QLast Update : Thu Aug 31 20:01:47 2023
 Response via : Initial Calibration

Compound	R.T.	QIon	Response	Conc	Units	Dev(Min)

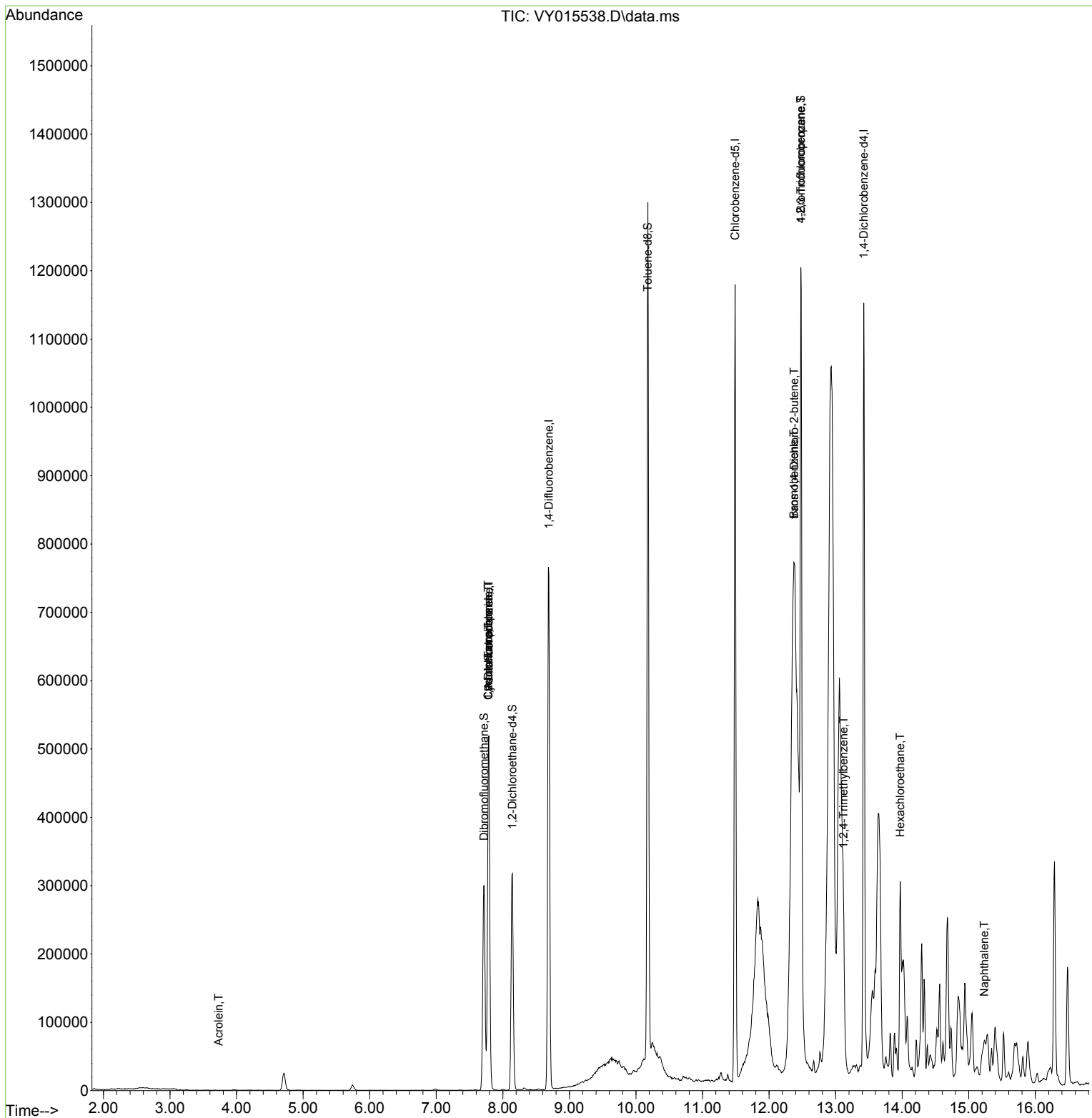
Internal Standards						
1) Pentafluorobenzene	7.789	168	407045	50.000	ug/l	0.00
34) 1,4-Difluorobenzene	8.691	114	678583	50.000	ug/l	0.00
63) Chlorobenzene-d5	11.490	117	625502	50.000	ug/l	0.00
72) 1,4-Dichlorobenzene-d4	13.422	152	287920	50.000	ug/l	0.00
System Monitoring Compounds						
33) 1,2-Dichloroethane-d4	8.143	65	249803	57.249	ug/l	0.00
Spiked Amount	50.000	Range	50 - 163	Recovery	=	114.500%
35) Dibromofluoromethane	7.716	113	215575	55.155	ug/l	0.00
Spiked Amount	50.000	Range	54 - 147	Recovery	=	110.320%
50) Toluene-d8	10.179	98	806494	56.979	ug/l	0.00
Spiked Amount	50.000	Range	58 - 134	Recovery	=	113.960%
62) 4-Bromofluorobenzene	12.477	95	290343	55.256	ug/l	0.00
Spiked Amount	50.000	Range	30 - 143	Recovery	=	110.520%
Target Compounds						
					Qvalue	
11) Tert butyl alcohol	4.936	59	133	Below Cal	#	89
13) Acrolein	3.729	56	20	11.661	ug/l #	47
20) Methylene Chloride	4.710	84	19752	Below Cal		92
31) Cyclohexane	7.783	56	8237	1.063	ug/l #	1
36) 1,1-Dichloropropene	7.783	75	31182	4.544	ug/l #	50
38) Carbon Tetrachloride	7.783	117	39684	5.599	ug/l #	15
76) 1,2,3-Trichloropropane	12.477	75	160197	41.957	ug/l #	100
77) Bromobenzene	12.374	156	1291225	252.086	ug/l #	1
81) trans-1,4-Dichloro-2-b...	12.380	75	38817	22.426	ug/l #	26
84) 1,2,4-Trimethylbenzene	13.117	105	29180	1.625	ug/l	95
90) Hexachloroethane	13.971	117	11640	3.286	ug/l #	8
95) Naphthalene	15.233	128	27475	1.914	ug/l	97

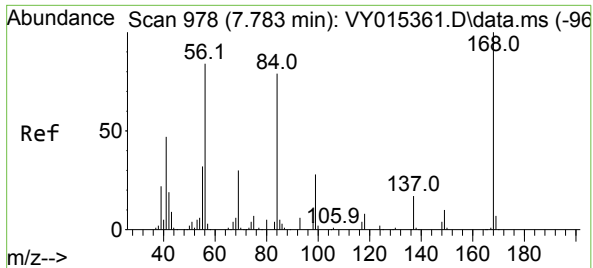
(#) = qualifier out of range (m) = manual integration (+) = signals summed

Data Path : Z:\voasrv\HPCHEM1\MSVOA_Y\Data\VY091423\
 Data File : VY015538.D
 Acq On : 14 Sep 2023 17:03
 Operator : SY/MD
 Sample : 04394-03
 Misc : 5.96g/5.0mL/MSVOA_Y/SOIL
 ALS Vial : 12 Sample Multiplier: 1

Instrument :
 MSVOA_Y
 ClientSampleId :

Quant Time: Sep 15 04:03:08 2023
 Quant Method : Z:\voasrv\HPCHEM1\MSVOA_Y\methods\82Y082923S.M
 Quant Title : SW846 8260
 QLast Update : Thu Aug 31 20:01:47 2023
 Response via : Initial Calibration

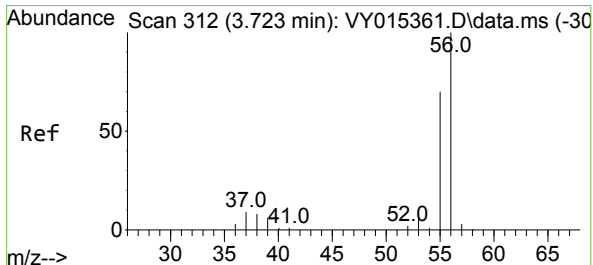
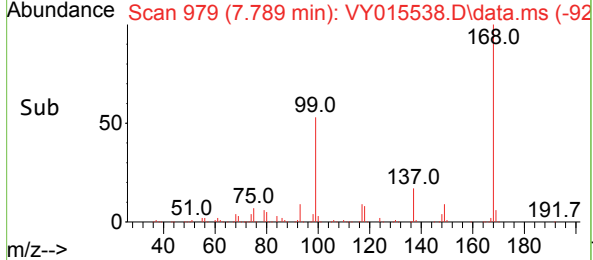
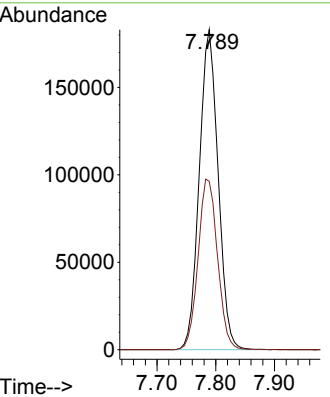
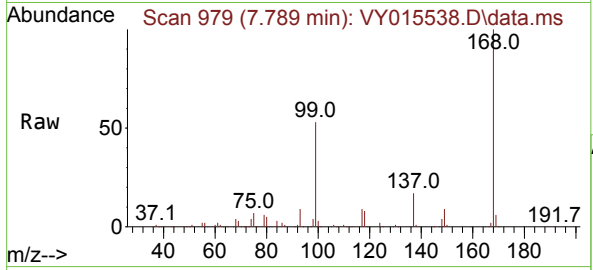




#1
 Pentafluorobenzene
 Concen: 50.000 ug/l
 RT: 7.789 min Scan# 91
 Delta R.T. 0.006 min
 Lab File: VY015538.D
 Acq: 14 Sep 2023 17:03

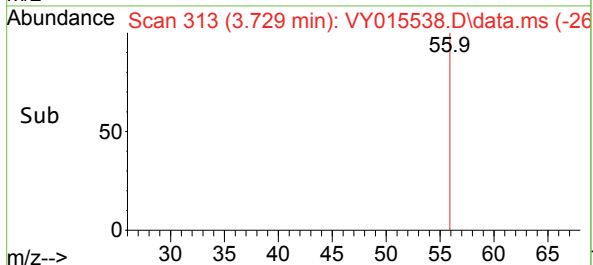
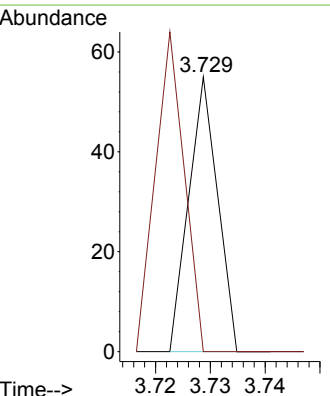
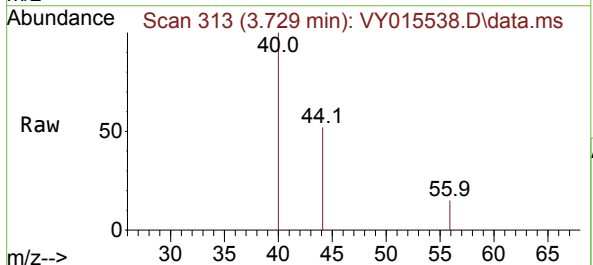
Instrument :
 MSVOA_Y
 ClientSampleId :

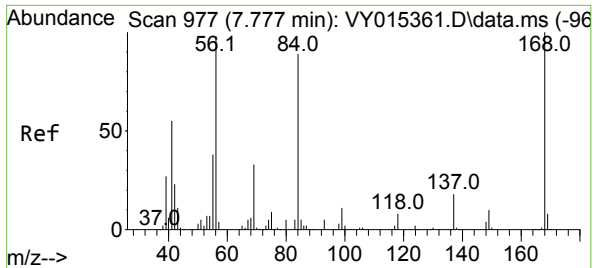
Tgt Ion:168 Resp: 407045
 Ion Ratio Lower Upper
 168 100
 99 52.6 43.4 65.0



#13
 Acrolein
 Concen: 11.661 ug/l
 RT: 3.729 min Scan# 313
 Delta R.T. 0.006 min
 Lab File: VY015538.D
 Acq: 14 Sep 2023 17:03

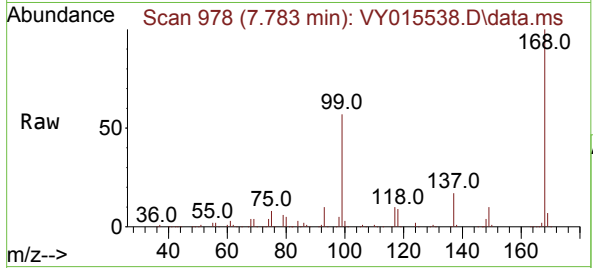
Tgt Ion: 56 Resp: 20
 Ion Ratio Lower Upper
 56 100
 55 115.0 57.0 85.4#



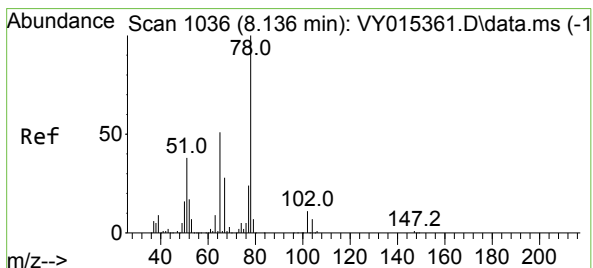
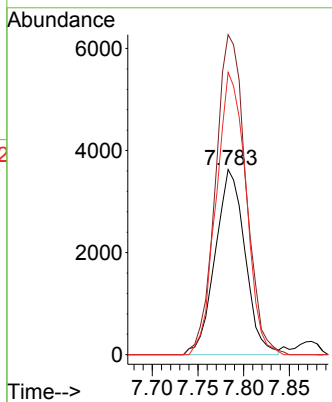
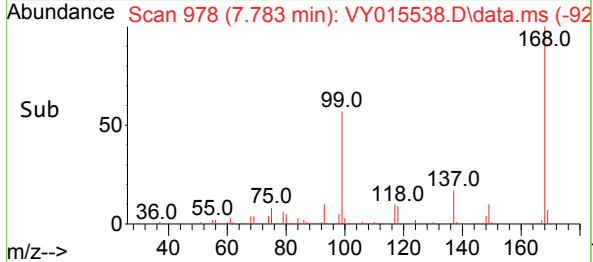


#31
 Cyclohexane
 Concen: 1.063 ug/l
 RT: 7.783 min Scan# 91
 Delta R.T. 0.000 min
 Lab File: VY015538.D
 Acq: 14 Sep 2023 17:03

Instrument :
 MSVOA_Y
 ClientSampleId :

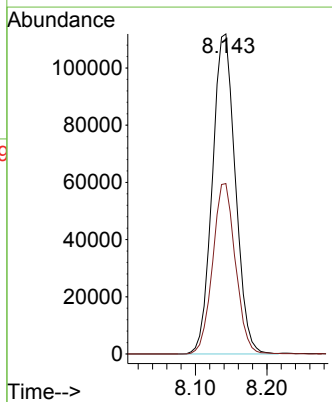
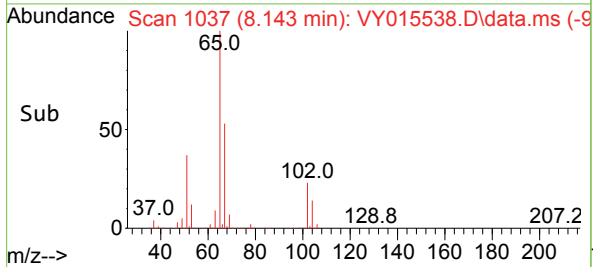
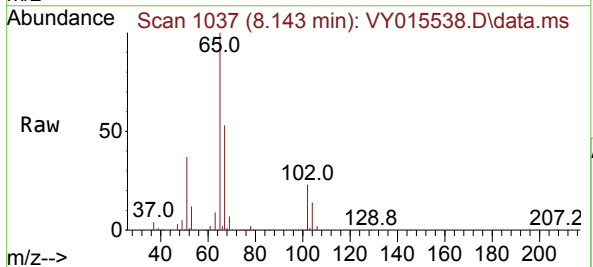


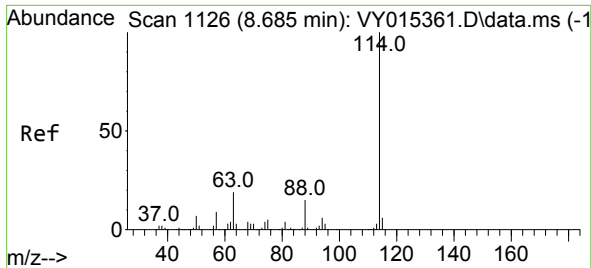
Tgt Ion: 56 Resp: 8237
 Ion Ratio Lower Upper
 56 100
 69 172.9 27.8 41.6#
 84 152.6 66.4 99.6#



#33
 1,2-Dichloroethane-d4
 Concen: 57.249 ug/l
 RT: 8.143 min Scan# 1037
 Delta R.T. 0.006 min
 Lab File: VY015538.D
 Acq: 14 Sep 2023 17:03

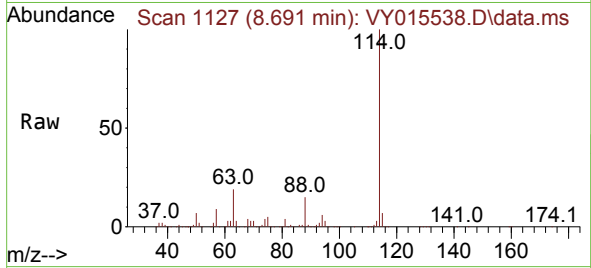
Tgt Ion: 65 Resp: 249803
 Ion Ratio Lower Upper
 65 100
 67 52.8 0.0 101.8





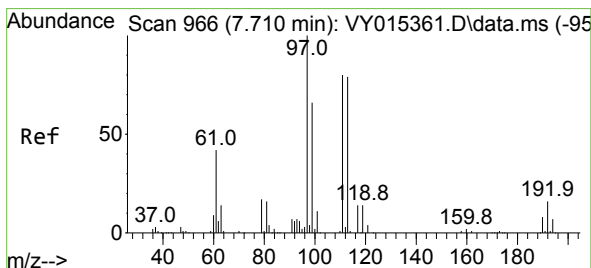
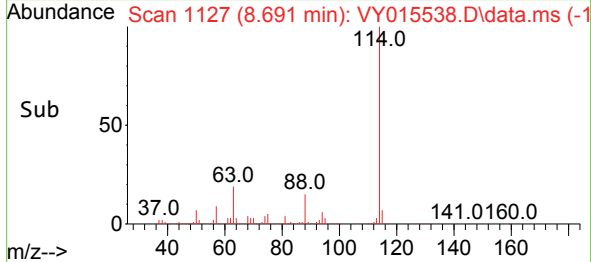
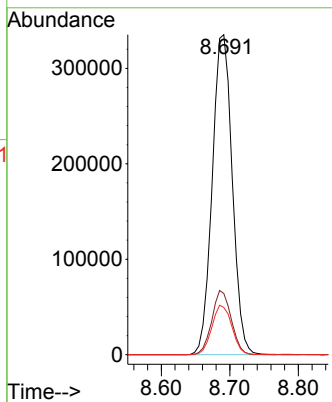
#34
 1,4-Difluorobenzene
 Concen: 50.000 ug/l
 RT: 8.691 min Scan# 1127
 Delta R.T. 0.006 min
 Lab File: VY015538.D
 Acq: 14 Sep 2023 17:03

Instrument : MSVOA_Y
 ClientSampleId :



Tgt Ion:114 Resp: 678583

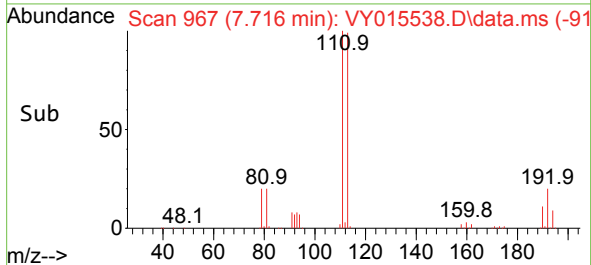
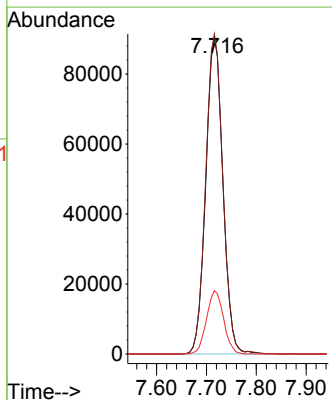
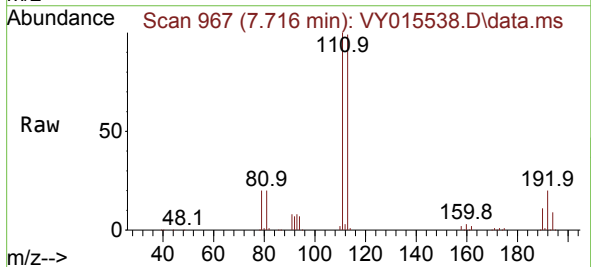
Ion	Ratio	Lower	Upper
114	100		
63	19.1	0.0	42.4
88	14.8	0.0	30.6

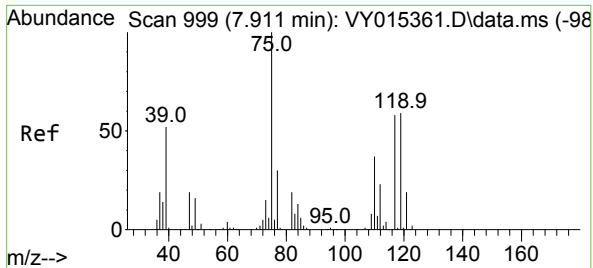


#35
 Dibromofluoromethane
 Concen: 55.155 ug/l
 RT: 7.716 min Scan# 967
 Delta R.T. 0.000 min
 Lab File: VY015538.D
 Acq: 14 Sep 2023 17:03

Tgt Ion:113 Resp: 215575

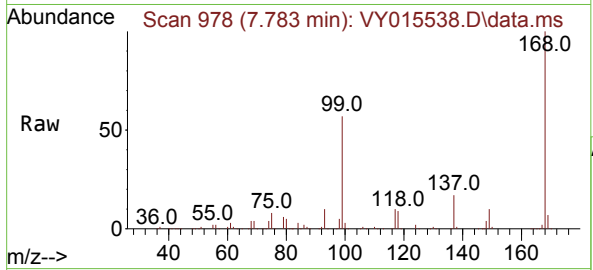
Ion	Ratio	Lower	Upper
113	100		
111	101.8	81.3	121.9
192	19.9	16.9	25.3



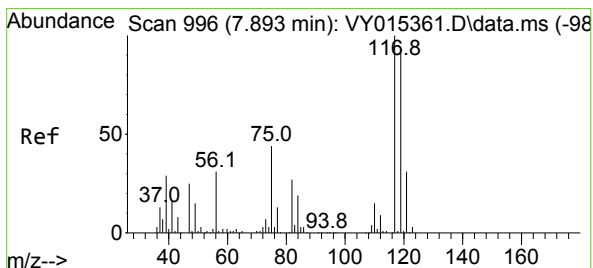
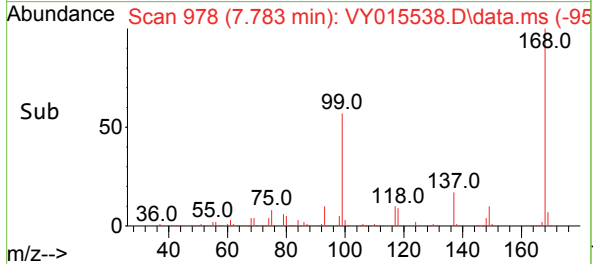
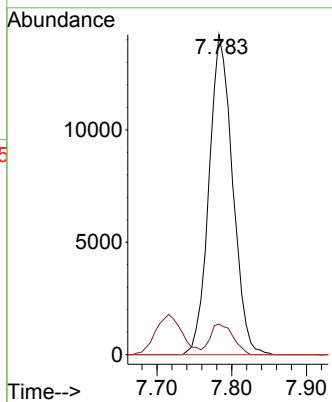


#36
 1,1-Dichloropropene
 Concen: 4.544 ug/l
 RT: 7.783 min Scan# 911
 Delta R.T. -0.128 min
 Lab File: VY015538.D
 Acq: 14 Sep 2023 17:03

Instrument : MSVOA_Y
 ClientSampleId :

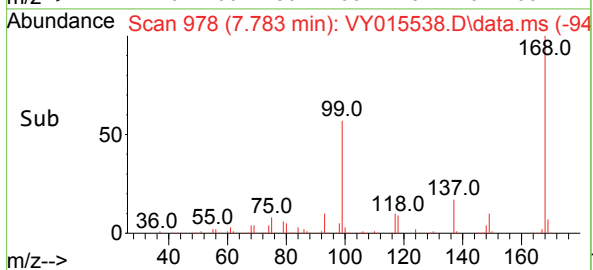
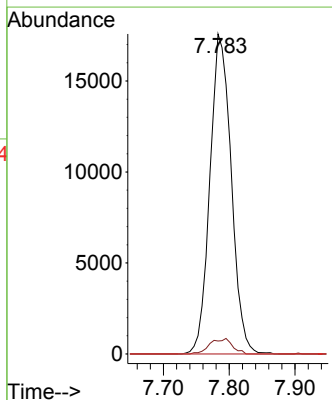
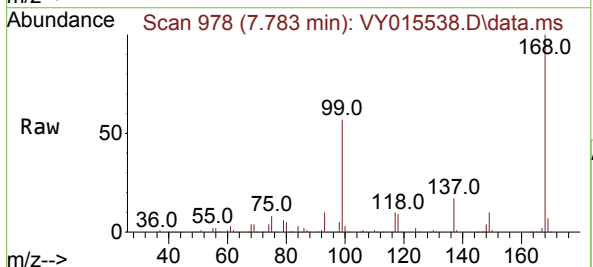


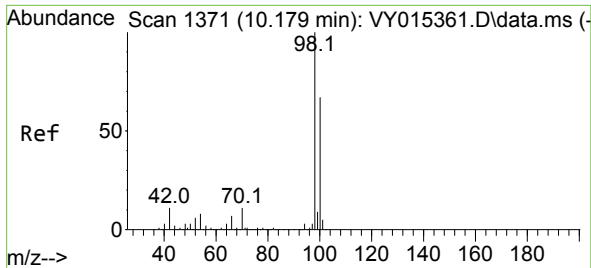
Tgt Ion: 75 Resp: 31182
 Ion Ratio Lower Upper
 75 100
 110 9.3 17.8 53.5#
 77 0.0 24.4 36.6#



#38
 Carbon Tetrachloride
 Concen: 5.599 ug/l
 RT: 7.783 min Scan# 978
 Delta R.T. -0.110 min
 Lab File: VY015538.D
 Acq: 14 Sep 2023 17:03

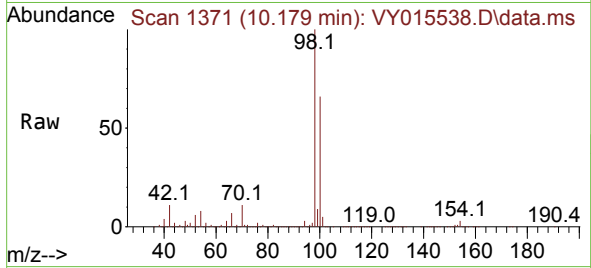
Tgt Ion: 117 Resp: 39684
 Ion Ratio Lower Upper
 117 100
 119 4.0 76.4 114.6#
 121 0.0 25.8 38.6#



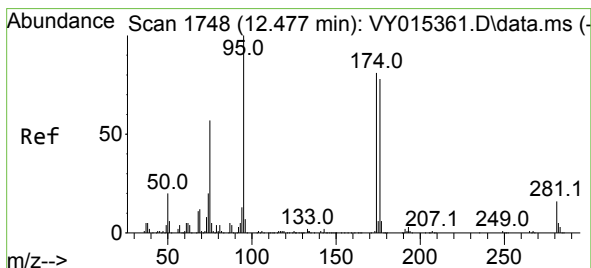
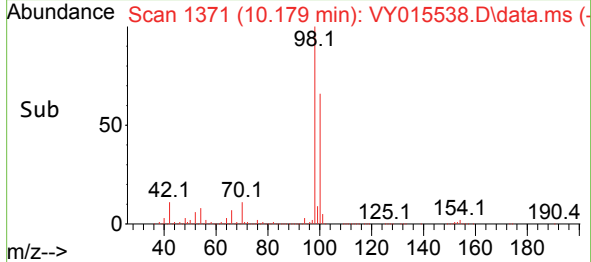
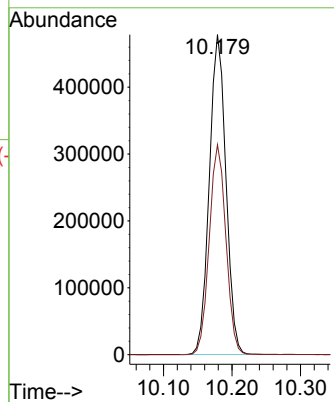


#50
 Toluene-d8
 Concen: 56.979 ug/l
 RT: 10.179 min Scan# 11
 Delta R.T. 0.000 min
 Lab File: VY015538.D
 Acq: 14 Sep 2023 17:03

Instrument :
 MSVOA_Y
 ClientSampleId :

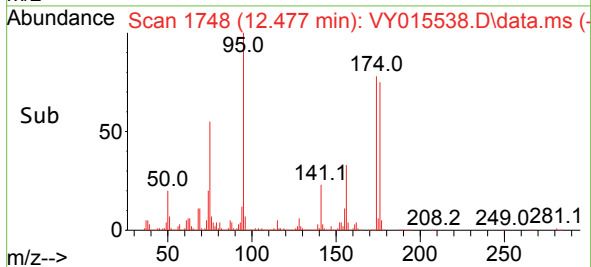
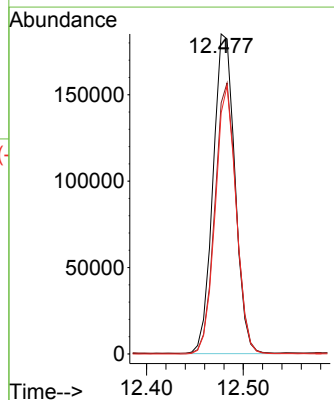
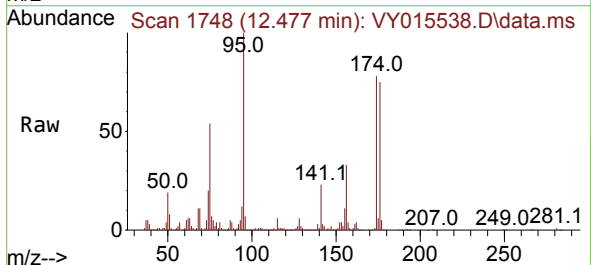


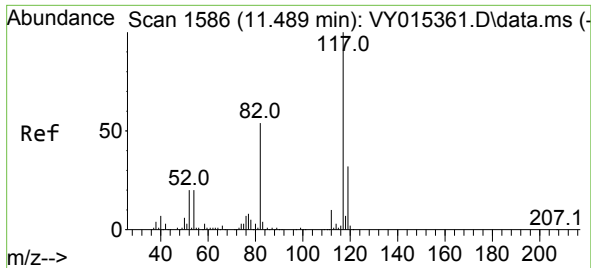
Tgt Ion: 98 Resp: 806494
 Ion Ratio Lower Upper
 98 100
 100 65.9 50.1 75.1



#62
 4-Bromofluorobenzene
 Concen: 55.256 ug/l
 RT: 12.477 min Scan# 1748
 Delta R.T. 0.000 min
 Lab File: VY015538.D
 Acq: 14 Sep 2023 17:03

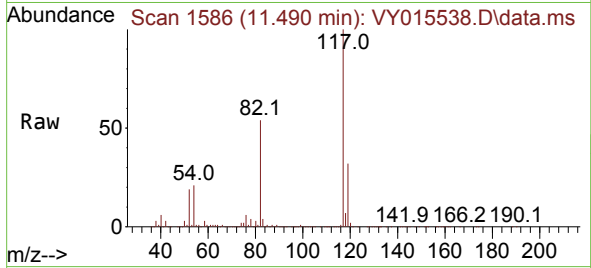
Tgt Ion: 95 Resp: 290343
 Ion Ratio Lower Upper
 95 100
 174 82.1 0.0 178.2
 176 80.1 0.0 173.8



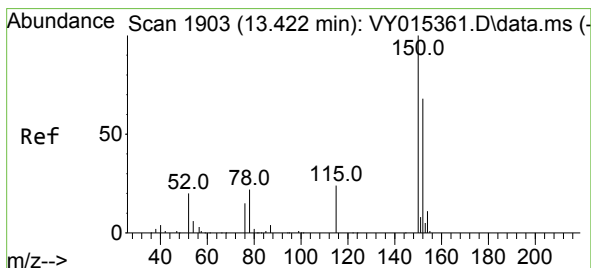
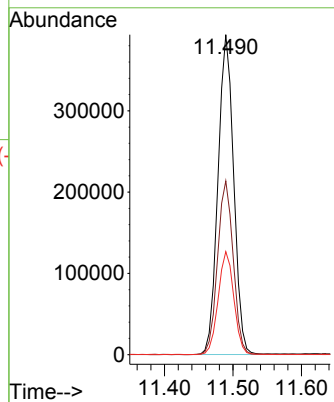
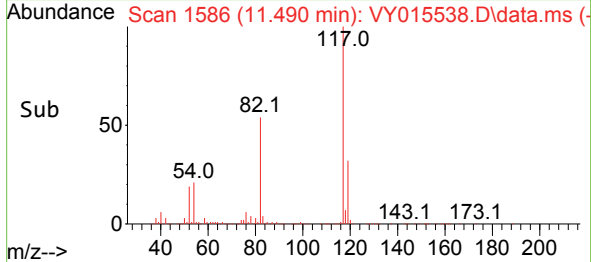


#63
 Chlorobenzene-d5
 Concen: 50.000 ug/l
 RT: 11.490 min Scan# 11
 Delta R.T. 0.000 min
 Lab File: VY015538.D
 Acq: 14 Sep 2023 17:03

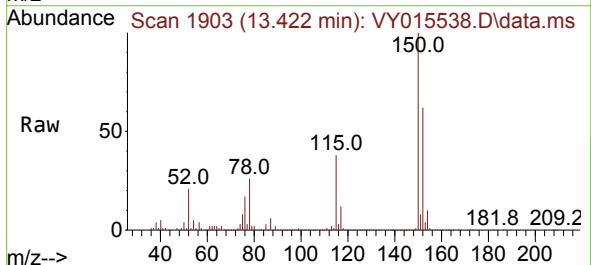
Instrument :
 MSVOA_Y
 ClientSampleId :



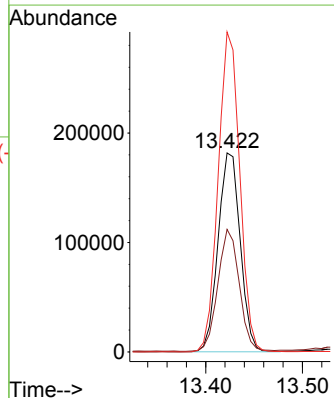
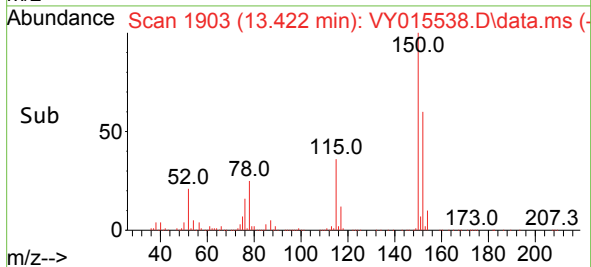
Tgt Ion:117 Resp: 625502
 Ion Ratio Lower Upper
 117 100
 82 54.3 43.4 65.0
 119 32.2 26.3 39.5

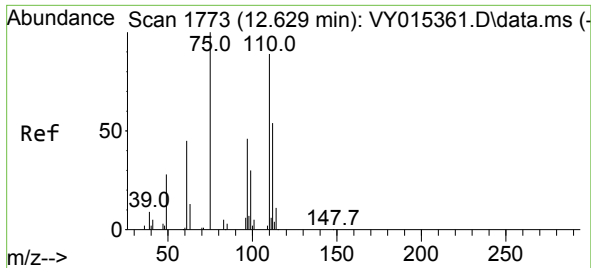


#72
 1,4-Dichlorobenzene-d4
 Concen: 50.000 ug/l
 RT: 13.422 min Scan# 1903
 Delta R.T. 0.000 min
 Lab File: VY015538.D
 Acq: 14 Sep 2023 17:03



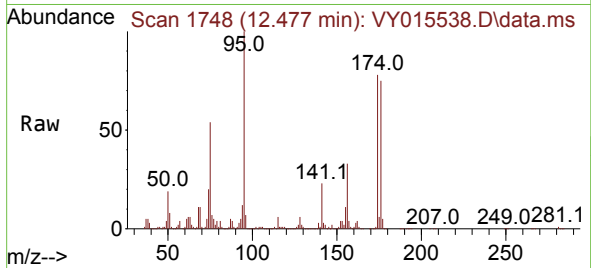
Tgt Ion:152 Resp: 287920
 Ion Ratio Lower Upper
 152 100
 115 59.3 28.8 86.5
 150 156.8 0.0 348.8



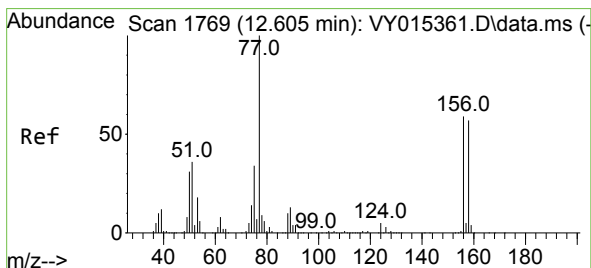
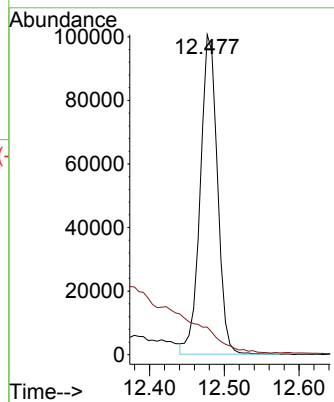
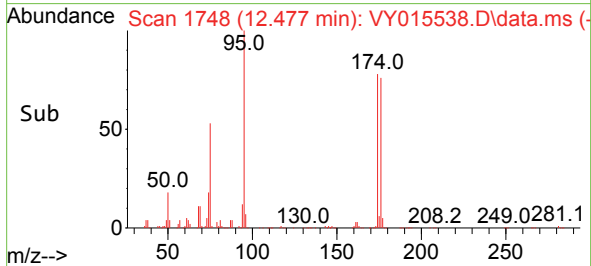


#76
 1,2,3-Trichloropropane
 Concen: 41.957 ug/l
 RT: 12.477 min Scan# 1731
 Delta R.T. -0.152 min
 Lab File: VY015538.D
 Acq: 14 Sep 2023 17:03

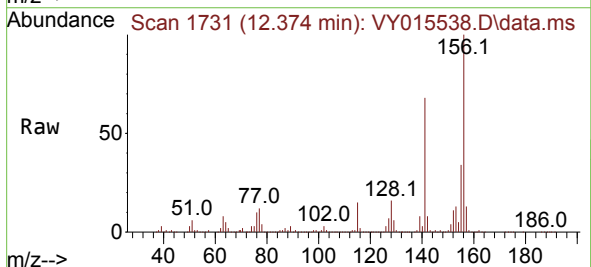
Instrument : MSVOA_Y
 ClientSampleId :



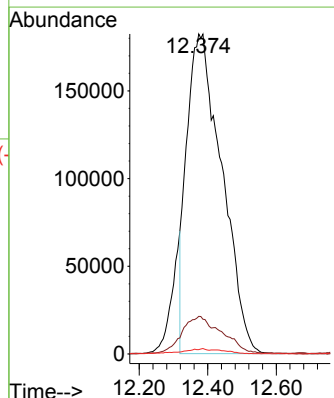
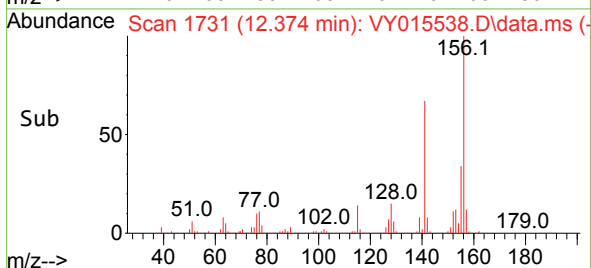
Tgt Ion: 75 Resp: 160197
 Ion Ratio Lower Upper
 75 100
 77 0.0 0.0 0.0

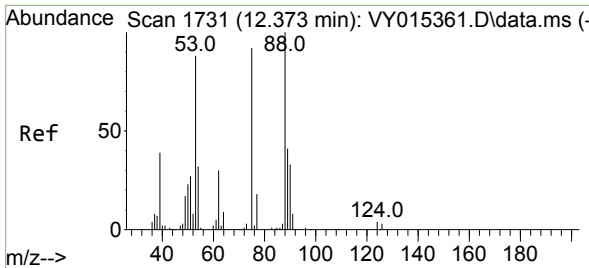


#77
 Bromobenzene
 Concen: 252.086 ug/l
 RT: 12.374 min Scan# 1731
 Delta R.T. -0.232 min
 Lab File: VY015538.D
 Acq: 14 Sep 2023 17:03



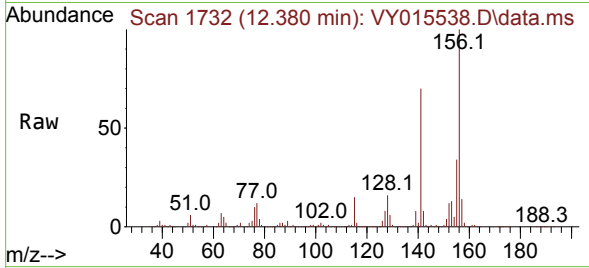
Tgt Ion: 156 Resp: 1291225
 Ion Ratio Lower Upper
 156 100
 77 11.7 92.8 278.6#
 158 0.5 48.4 145.3#



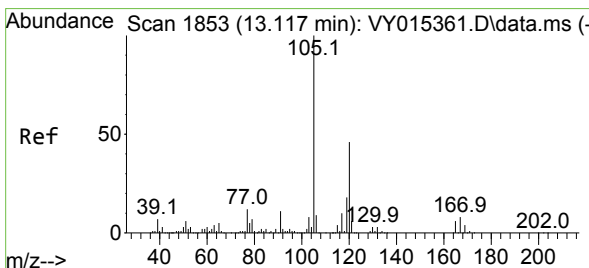
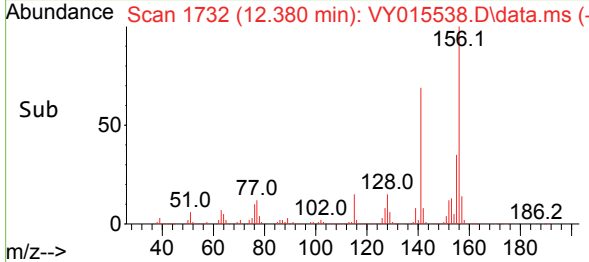
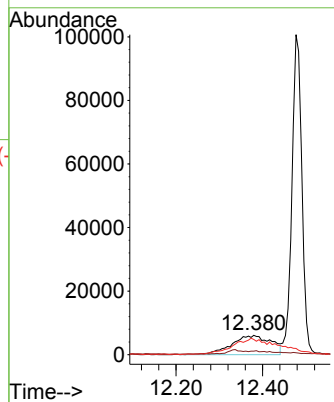


#81
 trans-1,4-Dichloro-2-butene
 Concen: 22.426 ug/l
 RT: 12.380 min Scan# 1732
 Delta R.T. 0.000 min
 Lab File: VY015538.D
 Acq: 14 Sep 2023 17:03

Instrument : MSVOA_Y
 ClientSampleId :

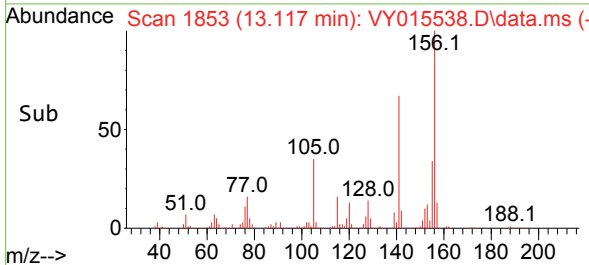
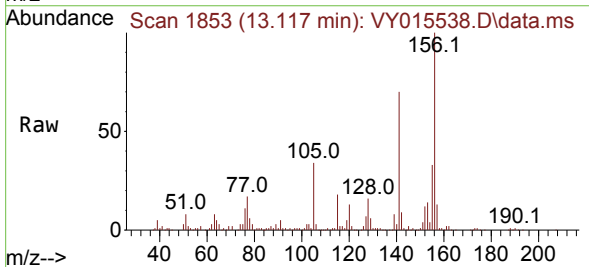
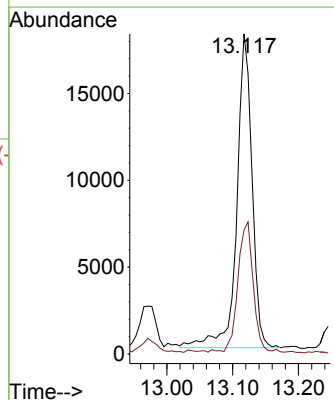


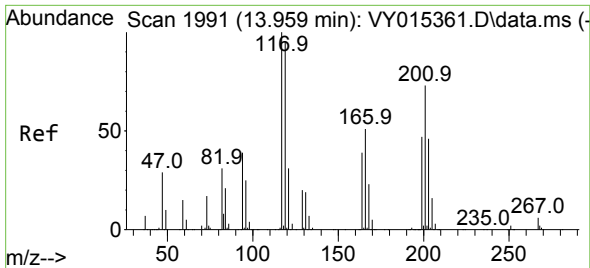
Tgt Ion: 75 Resp: 38817
 Ion Ratio Lower Upper
 75 100
 53 0.0 77.8 116.8#
 89 61.4 37.4 56.0#



#84
 1,2,4-Trimethylbenzene
 Concen: 1.625 ug/l
 RT: 13.117 min Scan# 1853
 Delta R.T. 0.000 min
 Lab File: VY015538.D
 Acq: 14 Sep 2023 17:03

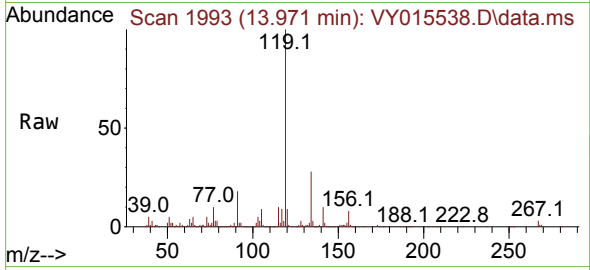
Tgt Ion: 105 Resp: 29180
 Ion Ratio Lower Upper
 105 100
 120 41.4 22.2 66.6



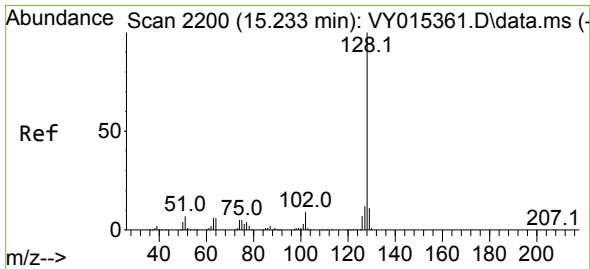
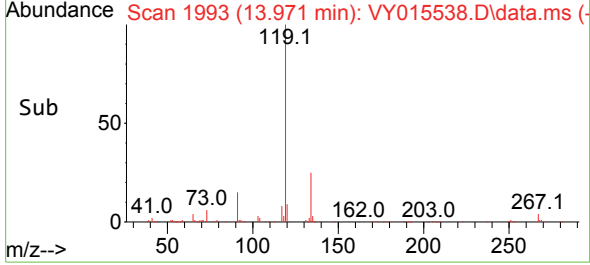
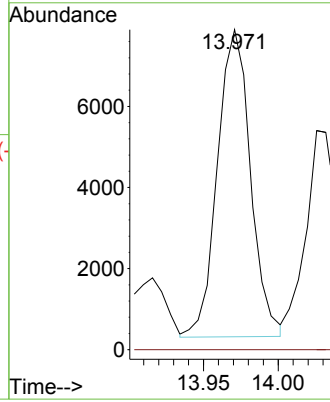


#90
 Hexachloroethane
 Concen: 3.286 ug/l
 RT: 13.971 min Scan# 1993
 Delta R.T. 0.012 min
 Lab File: VY015538.D
 Acq: 14 Sep 2023 17:03

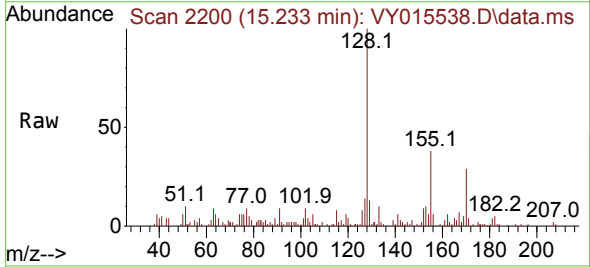
Instrument : MSVOA_Y
 ClientSampleId :



Tgt Ion:117 Resp: 11640
 Ion Ratio Lower Upper
 117 100
 201 0.0 41.6 124.8#



#95
 Naphthalene
 Concen: 1.914 ug/l
 RT: 15.233 min Scan# 2200
 Delta R.T. 0.000 min
 Lab File: VY015538.D
 Acq: 14 Sep 2023 17:03



Tgt Ion:128 Resp: 27475
 Ion Ratio Lower Upper
 128 100
 127 11.9 10.8 16.2
 129 9.9 8.6 13.0

