

Data Path : Z:\voasrv\HPCHEM1\MSVOA_Y\Data\VY091423\
 Data File : VY015548.D
 Acq On : 14 Sep 2023 21:00
 Operator : SY/MD
 Sample : 04351-07
 Misc : 5.41g/5.0mL/MSVOA_Y/SOIL
 ALS Vial : 22 Sample Multiplier: 1

Instrument :
 MSVOA_Y
 ClientSampleId :

Quant Time: Sep 15 04:06:53 2023
 Quant Method : Z:\voasrv\HPCHEM1\MSVOA_Y\methods\82Y082923S.M
 Quant Title : SW846 8260
 QLast Update : Thu Aug 31 20:01:47 2023
 Response via : Initial Calibration

Compound	R.T.	QIon	Response	Conc	Units	Dev(Min)

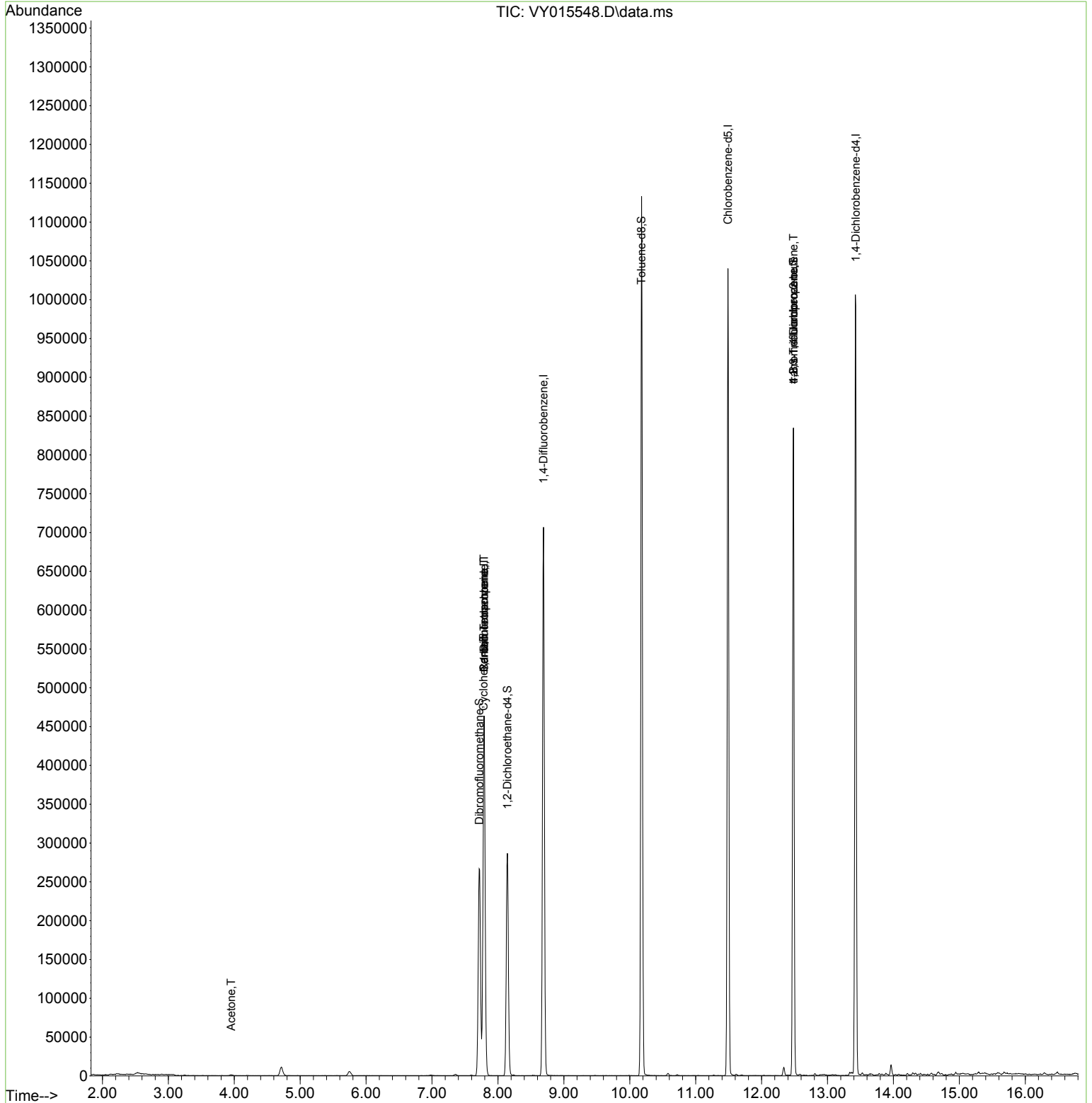
Internal Standards						
1) Pentafluorobenzene	7.789	168	357323	50.000	ug/l	0.00
34) 1,4-Difluorobenzene	8.691	114	610972	50.000	ug/l	0.00
63) Chlorobenzene-d5	11.490	117	564926	50.000	ug/l	0.00
72) 1,4-Dichlorobenzene-d4	13.428	152	268112	50.000	ug/l	0.00
System Monitoring Compounds						
33) 1,2-Dichloroethane-d4	8.143	65	227620	59.424	ug/l	0.00
Spiked Amount	50.000	Range	50 - 163	Recovery	=	118.840%
35) Dibromofluoromethane	7.716	113	192320	54.651	ug/l	0.00
Spiked Amount	50.000	Range	54 - 147	Recovery	=	109.300%
50) Toluene-d8	10.179	98	714341	56.054	ug/l	0.00
Spiked Amount	50.000	Range	58 - 134	Recovery	=	112.100%
62) 4-Bromofluorobenzene	12.483	95	250931	53.040	ug/l	0.00
Spiked Amount	50.000	Range	30 - 143	Recovery	=	106.080%
Target Compounds						
					Qvalue	
11) Tert butyl alcohol	4.960	59	242	Below Cal	#	89
16) Acetone	3.954	43	1855	1.160	ug/l	93
20) Methylene Chloride	4.704	84	8394	Below Cal		83
31) Cyclohexane	7.783	56	7524	1.106	ug/l #	1
36) 1,1-Dichloropropene	7.789	75	27285	4.416	ug/l #	50
38) Carbon Tetrachloride	7.789	117	36269	5.683	ug/l #	15
76) 1,2,3-Trichloropropane	12.483	75	133276	37.485	ug/l #	100
81) trans-1,4-Dichloro-2-b...	12.483	75	133276	82.688	ug/l #	10

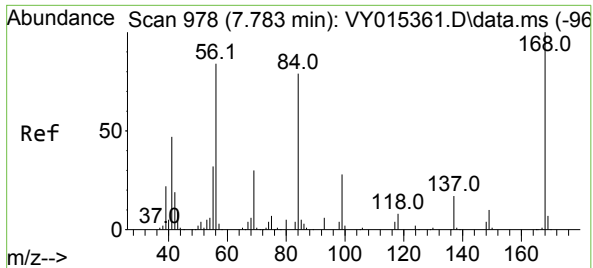
(#) = qualifier out of range (m) = manual integration (+) = signals summed

Data Path : Z:\voasrv\HPCHEM1\MSVOA_Y\Data\VY091423\
 Data File : VY015548.D
 Acq On : 14 Sep 2023 21:00
 Operator : SY/MD
 Sample : 04351-07
 Misc : 5.41g/5.0mL/MSVOA_Y/SOIL
 ALS Vial : 22 Sample Multiplier: 1

Instrument :
 MSVOA_Y
 ClientSampleId :

Quant Time: Sep 15 04:06:53 2023
 Quant Method : Z:\voasrv\HPCHEM1\MSVOA_Y\methods\82Y082923S.M
 Quant Title : SW846 8260
 QLast Update : Thu Aug 31 20:01:47 2023
 Response via : Initial Calibration

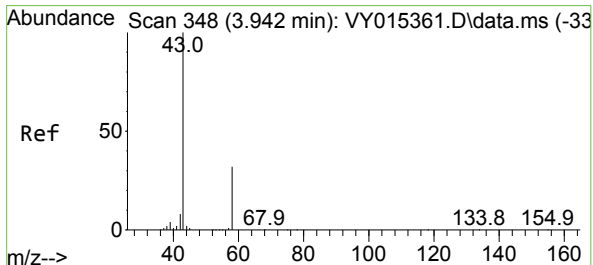
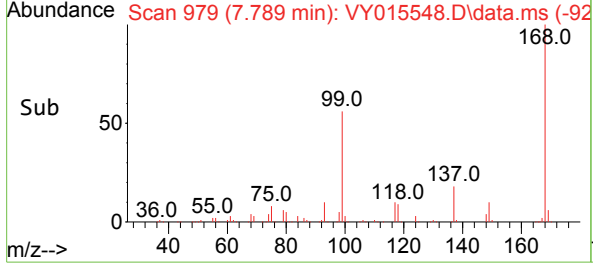
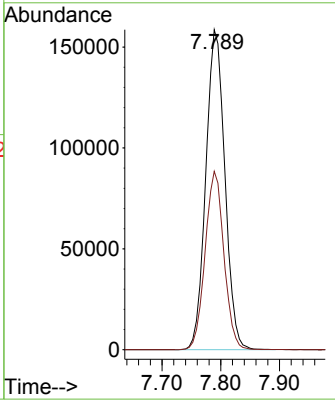
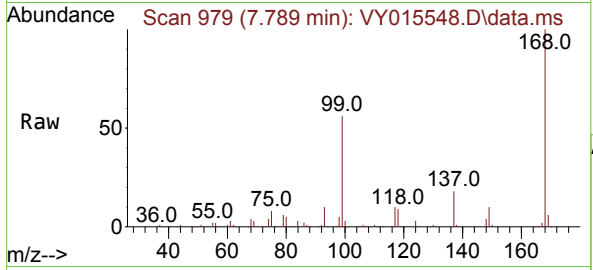




#1
 Pentafluorobenzene
 Concen: 50.000 ug/l
 RT: 7.789 min Scan# 91
 Delta R.T. 0.006 min
 Lab File: VY015548.D
 Acq: 14 Sep 2023 21:00

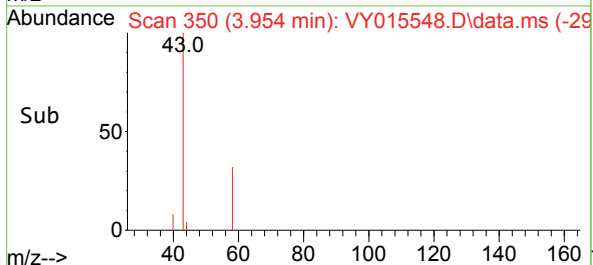
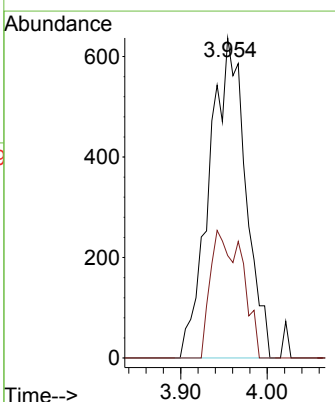
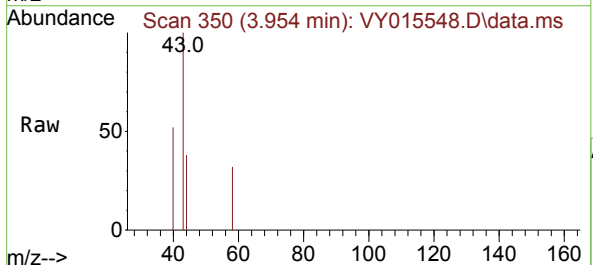
Instrument : MSVOA_Y
 ClientSampleId :

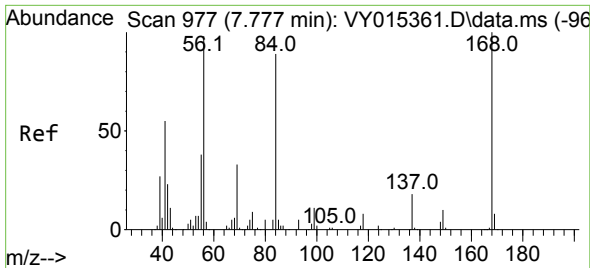
Tgt Ion:168 Resp: 357323
 Ion Ratio Lower Upper
 168 100
 99 55.7 43.4 65.0



#16
 Acetone
 Concen: 1.160 ug/l
 RT: 3.954 min Scan# 350
 Delta R.T. 0.012 min
 Lab File: VY015548.D
 Acq: 14 Sep 2023 21:00

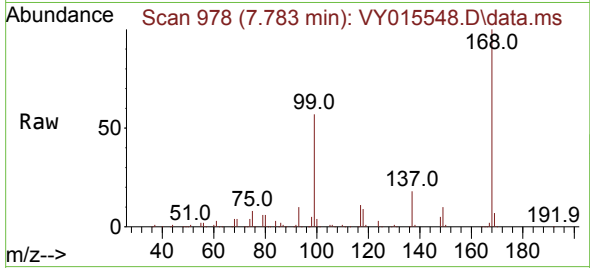
Tgt Ion: 43 Resp: 1855
 Ion Ratio Lower Upper
 43 100
 58 32.0 22.7 34.1





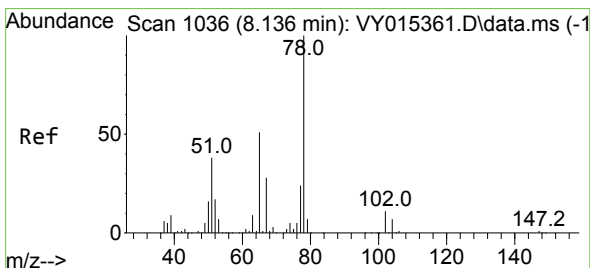
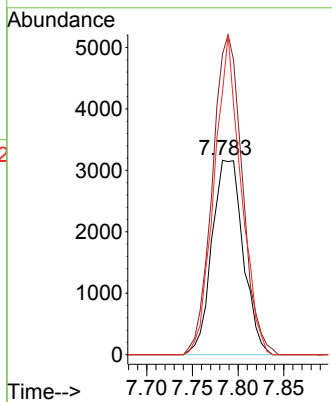
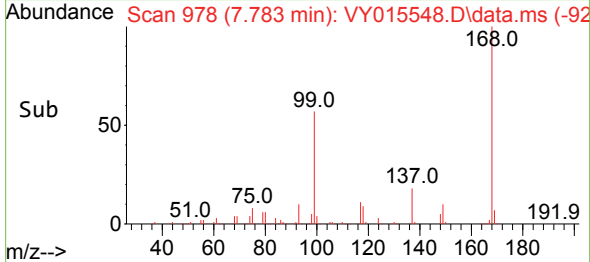
#31
 Cyclohexane
 Concen: 1.106 ug/l
 RT: 7.783 min Scan# 91
 Delta R.T. 0.000 min
 Lab File: VY015548.D
 Acq: 14 Sep 2023 21:00

Instrument :
 MSVOA_Y
 ClientSampleId :

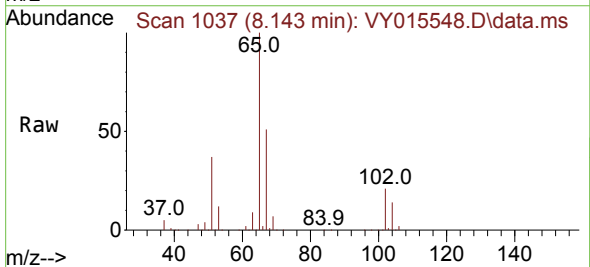


Tgt Ion: 56 Resp: 7524

Ion	Ratio	Lower	Upper
56	100		
69	154.6	27.8	41.6#
84	135.2	66.4	99.6#

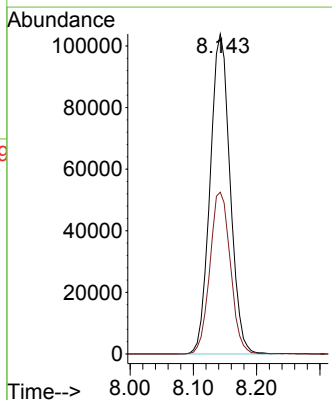
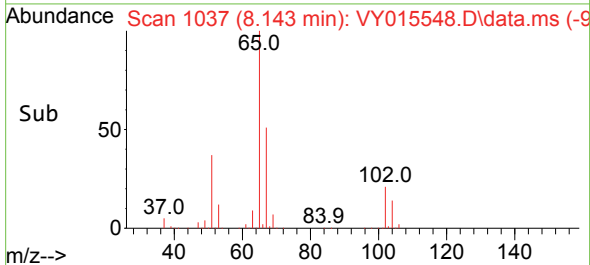


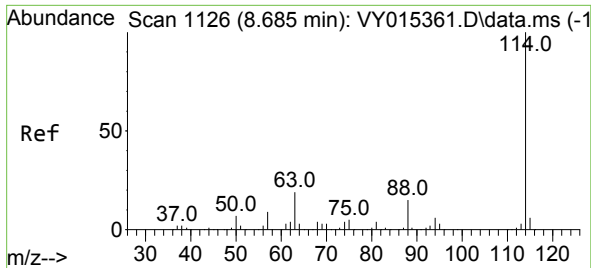
#33
 1,2-Dichloroethane-d4
 Concen: 59.424 ug/l
 RT: 8.143 min Scan# 1037
 Delta R.T. 0.006 min
 Lab File: VY015548.D
 Acq: 14 Sep 2023 21:00



Tgt Ion: 65 Resp: 227620

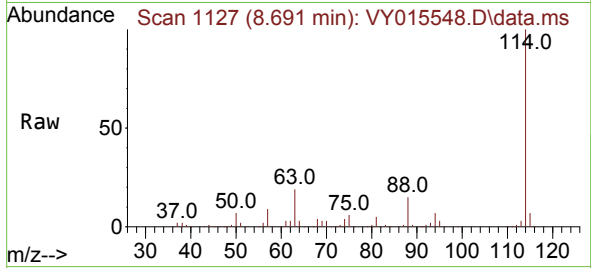
Ion	Ratio	Lower	Upper
65	100		
67	51.8	0.0	101.8





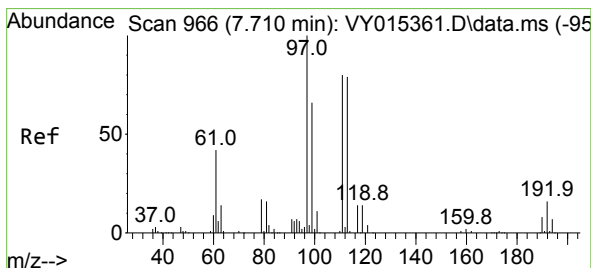
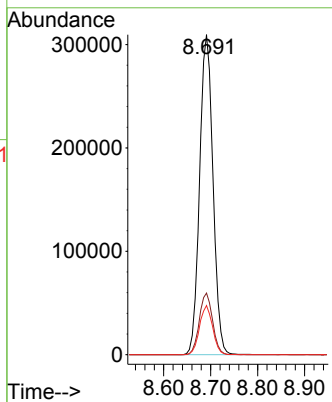
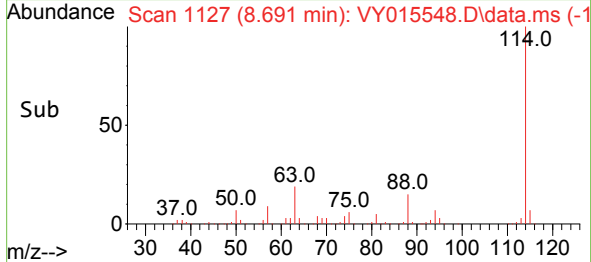
#34
 1,4-Difluorobenzene
 Concen: 50.000 ug/l
 RT: 8.691 min Scan# 1127
 Delta R.T. 0.006 min
 Lab File: VY015548.D
 Acq: 14 Sep 2023 21:00

Instrument : MSVOA_Y
 ClientSampleId :

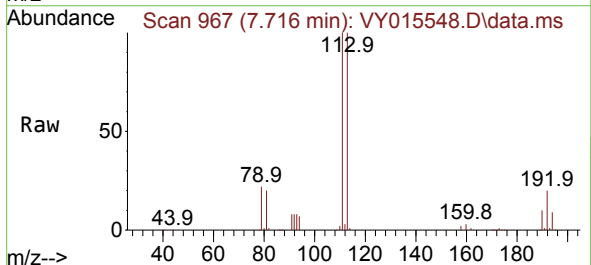


Tgt Ion:114 Resp: 610972

Ion	Ratio	Lower	Upper
114	100		
63	19.2	0.0	42.4
88	15.4	0.0	30.6

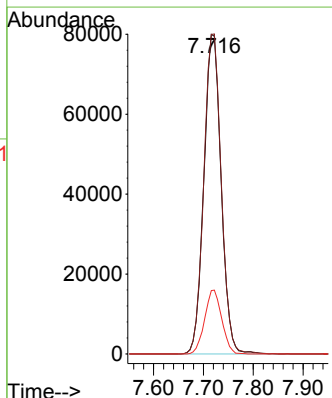
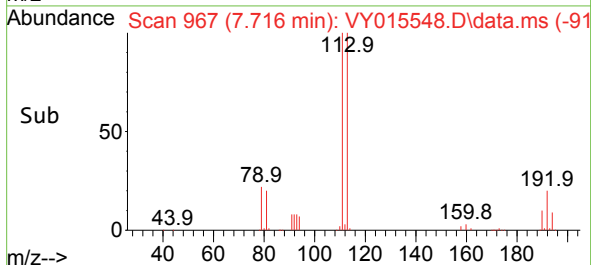


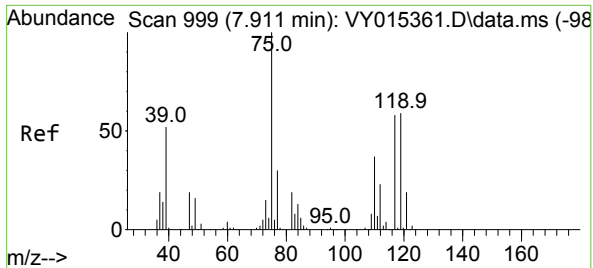
#35
 Dibromofluoromethane
 Concen: 54.651 ug/l
 RT: 7.716 min Scan# 967
 Delta R.T. 0.000 min
 Lab File: VY015548.D
 Acq: 14 Sep 2023 21:00



Tgt Ion:113 Resp: 192320

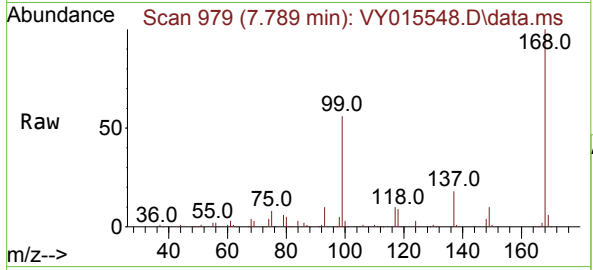
Ion	Ratio	Lower	Upper
113	100		
111	101.1	81.3	121.9
192	19.8	16.9	25.3





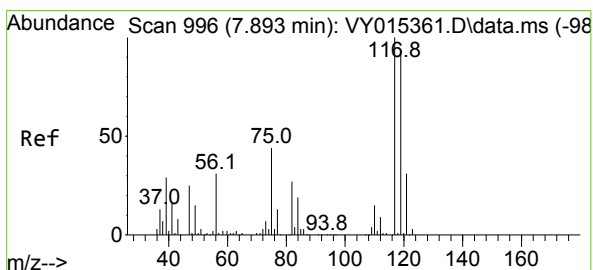
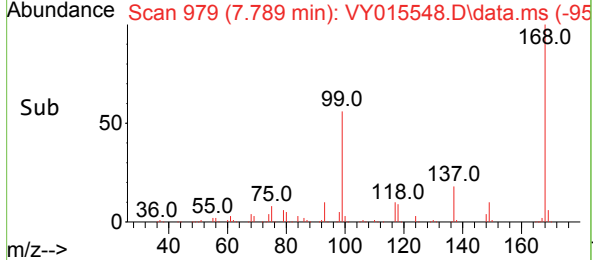
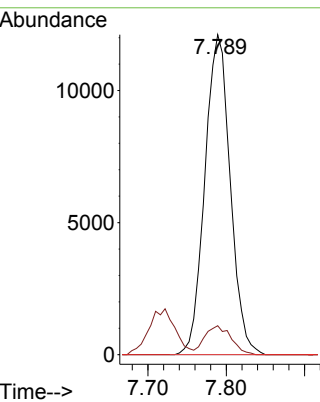
#36
 1,1-Dichloropropene
 Concen: 4.416 ug/l
 RT: 7.789 min Scan# 919
 Delta R.T. -0.122 min
 Lab File: VY015548.D
 Acq: 14 Sep 2023 21:00

Instrument : MSVOA_Y
 ClientSampleId :



Tgt Ion: 75 Resp: 27285

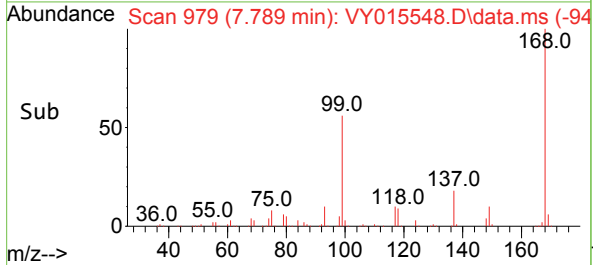
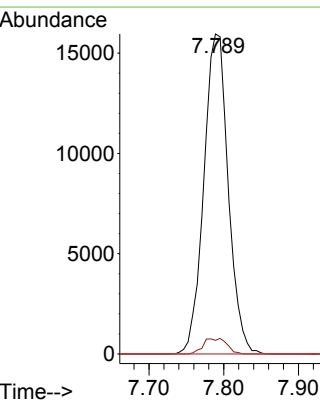
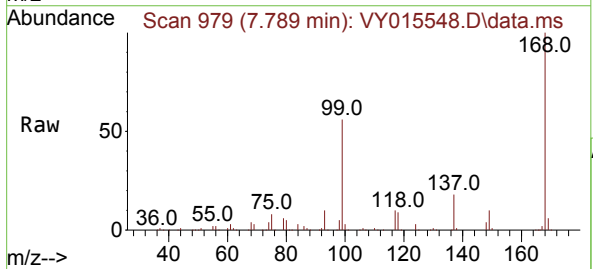
Ion	Ratio	Lower	Upper
75	100		
110	9.3	17.8	53.5#
77	0.0	24.4	36.6#

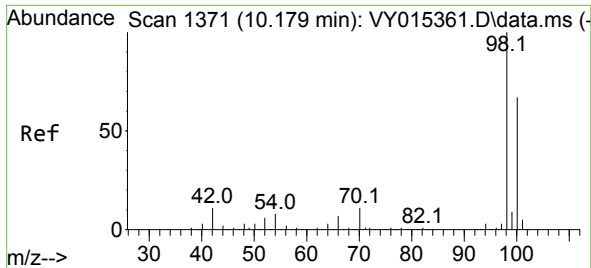


#38
 Carbon Tetrachloride
 Concen: 5.683 ug/l
 RT: 7.789 min Scan# 979
 Delta R.T. -0.104 min
 Lab File: VY015548.D
 Acq: 14 Sep 2023 21:00

Tgt Ion: 117 Resp: 36269

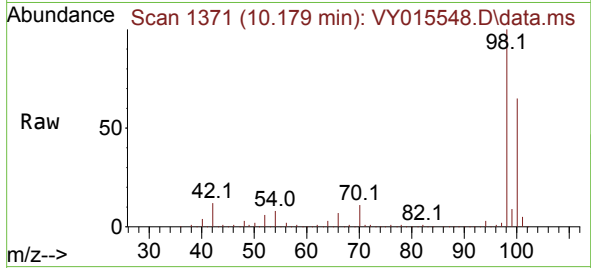
Ion	Ratio	Lower	Upper
117	100		
119	4.3	76.4	114.6#
121	0.0	25.8	38.6#



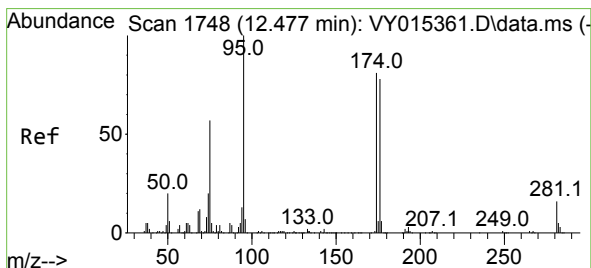
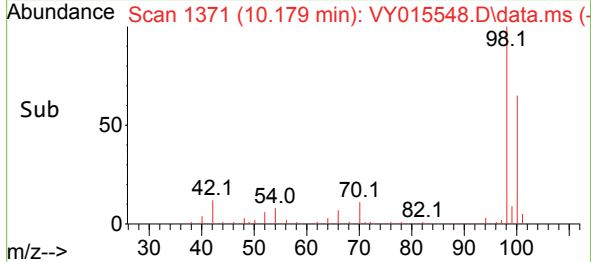
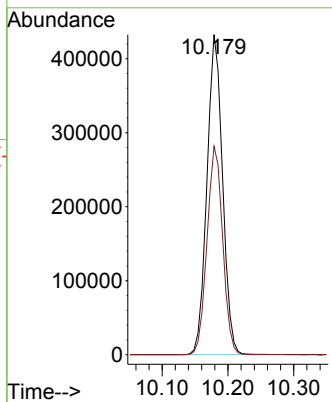


#50
 Toluene-d8
 Concen: 56.054 ug/l
 RT: 10.179 min Scan# 11
 Delta R.T. 0.000 min
 Lab File: VY015548.D
 Acq: 14 Sep 2023 21:00

Instrument :
 MSVOA_Y
 ClientSampleId :

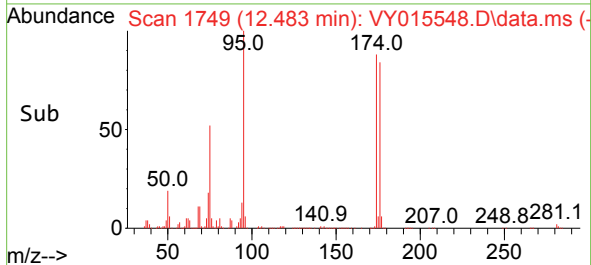
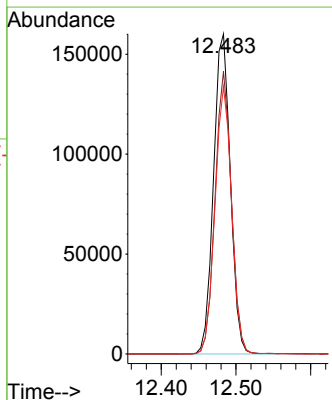
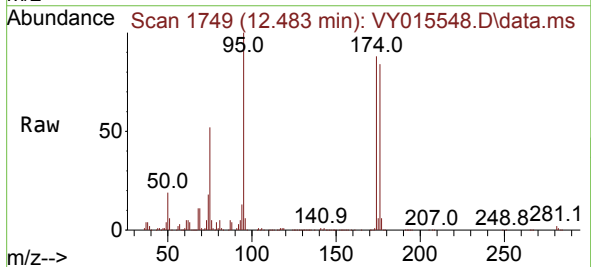


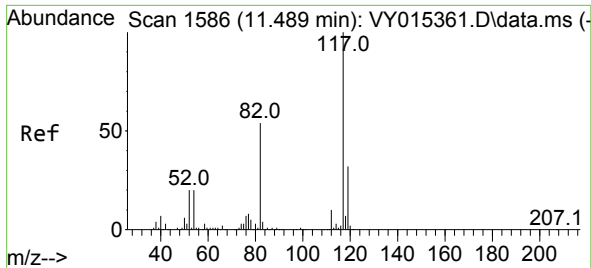
Tgt Ion: 98 Resp: 714341
 Ion Ratio Lower Upper
 98 100
 100 65.4 50.1 75.1



#62
 4-Bromofluorobenzene
 Concen: 53.040 ug/l
 RT: 12.483 min Scan# 1749
 Delta R.T. 0.006 min
 Lab File: VY015548.D
 Acq: 14 Sep 2023 21:00

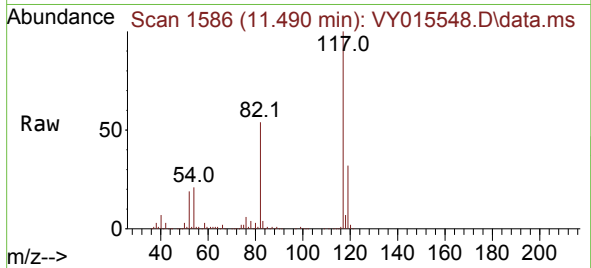
Tgt Ion: 95 Resp: 250931
 Ion Ratio Lower Upper
 95 100
 174 86.1 0.0 178.2
 176 83.0 0.0 173.8



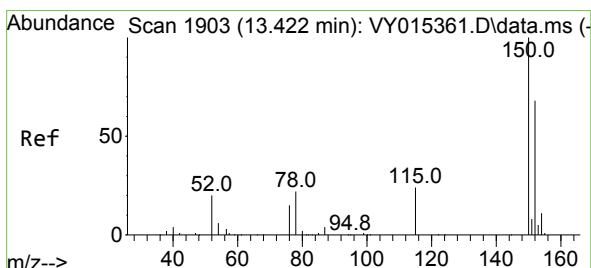
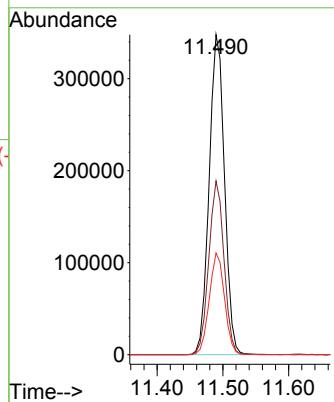
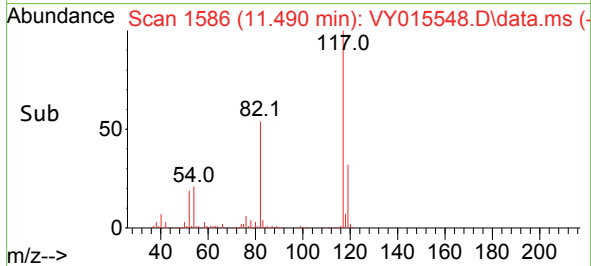


#63
 Chlorobenzene-d5
 Concen: 50.000 ug/l
 RT: 11.490 min Scan# 11
 Delta R.T. 0.000 min
 Lab File: VY015548.D
 Acq: 14 Sep 2023 21:00

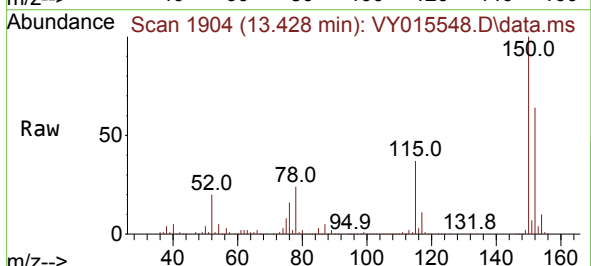
Instrument :
 MSVOA_Y
 ClientSampleId :



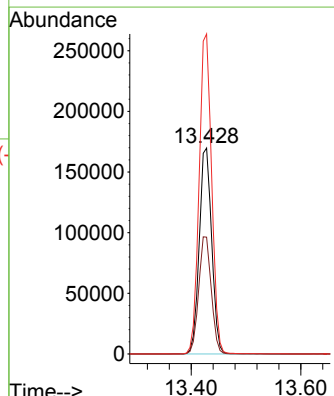
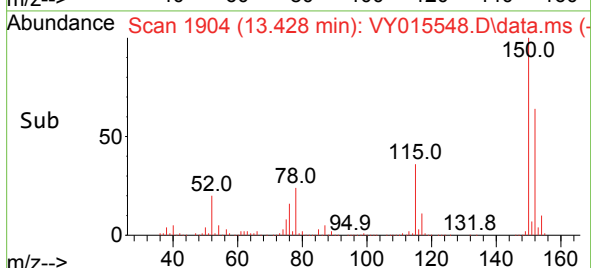
Tgt Ion:117 Resp: 564926
 Ion Ratio Lower Upper
 117 100
 82 54.2 43.4 65.0
 119 31.8 26.3 39.5

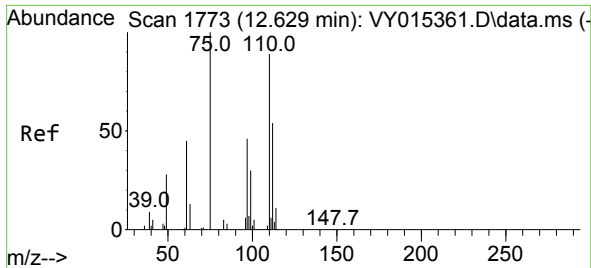


#72
 1,4-Dichlorobenzene-d4
 Concen: 50.000 ug/l
 RT: 13.428 min Scan# 1904
 Delta R.T. 0.006 min
 Lab File: VY015548.D
 Acq: 14 Sep 2023 21:00



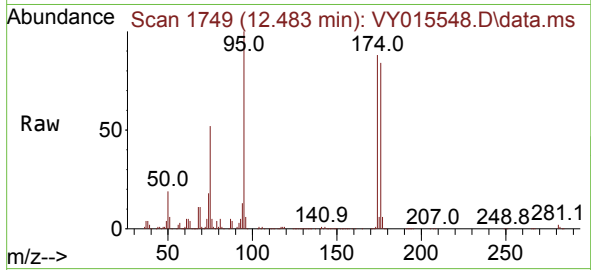
Tgt Ion:152 Resp: 268112
 Ion Ratio Lower Upper
 152 100
 115 57.7 28.8 86.5
 150 156.4 0.0 348.8



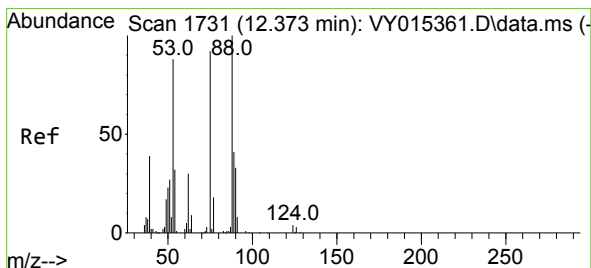
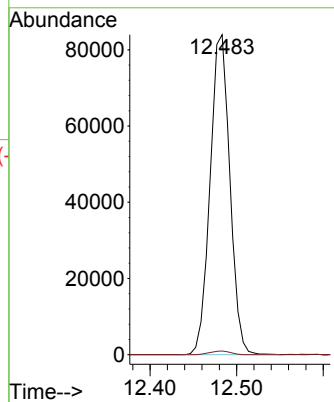
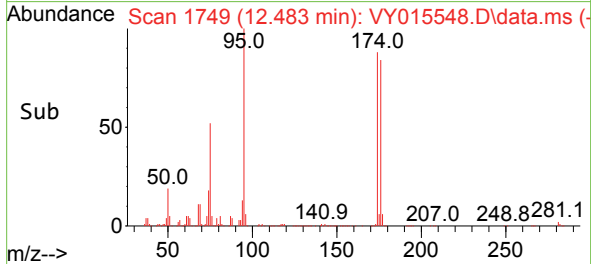


#76
 1,2,3-Trichloropropane
 Concen: 37.485 ug/l
 RT: 12.483 min Scan# 1749
 Delta R.T. -0.146 min
 Lab File: VY015548.D
 Acq: 14 Sep 2023 21:00

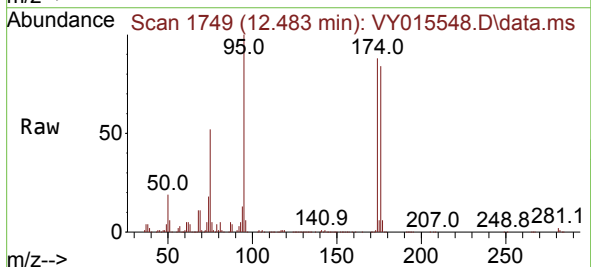
Instrument : MSVOA_Y
 ClientSampleId :



Tgt Ion: 75 Resp: 133276
 Ion Ratio Lower Upper
 75 100
 77 1.2 0.0 0.0#



#81
 trans-1,4-Dichloro-2-butene
 Concen: 82.688 ug/l
 RT: 12.483 min Scan# 1749
 Delta R.T. 0.104 min
 Lab File: VY015548.D
 Acq: 14 Sep 2023 21:00



Tgt Ion: 75 Resp: 133276
 Ion Ratio Lower Upper
 75 100
 53 0.0 77.8 116.8#
 89 0.0 37.4 56.0#

