

Data Path : Z:\voasrv\HPCHEM1\MSVOA_Y\Data\VY091621\
 Data File : VY006044.D
 Acq On : 16 Sep 2021 13:47
 Operator : SY/MD
 Sample : M3733-05RE
 Misc : 6.50G/5ML/MSVOA_Y/SOIL
 ALS Vial : 9 Sample Multiplier: 1

Instrument :
 MSVOA_Y
 ClientSampleId :
 NAPL-AREA-01-(18-20)RE

Quant Time: Sep 17 02:44:47 2021
 Quant Method : Z:\voasrv\HPCHEM1\MSVOA_Y\methods\82Y091421S.M
 Quant Title : SW846 8260
 QLast Update : Wed Sep 15 05:01:47 2021
 Response via : Initial Calibration

Compound	R.T.	QIon	Response	Conc	Units	Dev(Min)

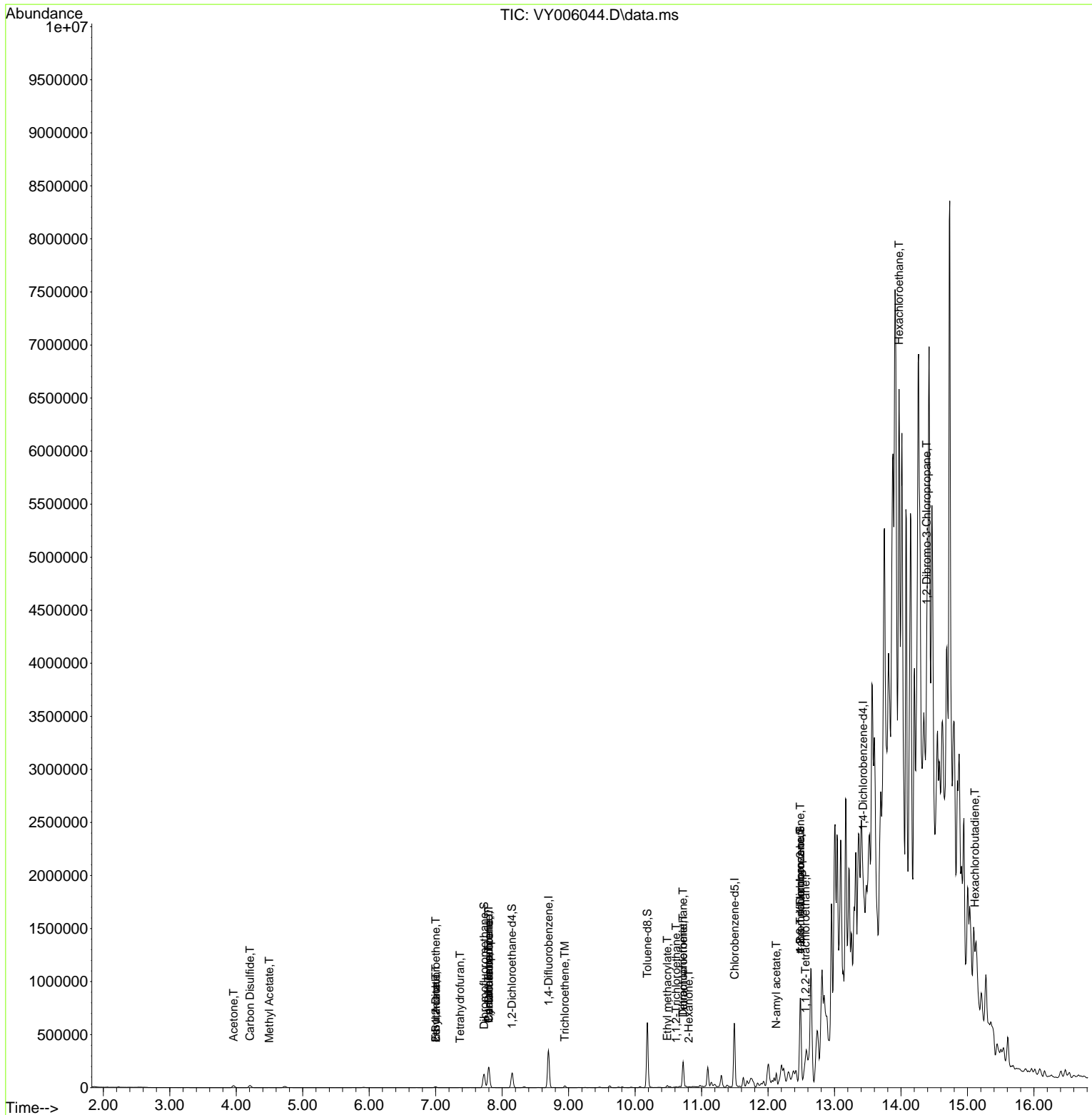
Internal Standards						
1) Pentafluorobenzene	7.801	168	148843	50.000	ug/l	0.00
34) 1,4-Difluorobenzene	8.697	114	284309	50.000	ug/l	0.00
63) Chlorobenzene-d5	11.496	117	306201	50.000	ug/l	0.00
72) 1,4-Dichlorobenzene-d4	13.428	152	207599	50.000	ug/l	0.00
System Monitoring Compounds						
33) 1,2-Dichloroethane-d4	8.149	65	114512	55.386	ug/l	0.00
Spiked Amount	50.000	Range	50 - 163	Recovery	=	110.780%
35) Dibromofluoromethane	7.728	113	88436	50.080	ug/l	0.00
Spiked Amount	50.000	Range	54 - 147	Recovery	=	100.160%
50) Toluene-d8	10.185	98	374968	49.821	ug/l	0.00
Spiked Amount	50.000	Range	49 - 140	Recovery	=	99.640%
62) 4-Bromofluorobenzene	12.483	95	155026	60.668	ug/l	0.00
Spiked Amount	50.000	Range	25 - 144	Recovery	=	121.340%
Target Compounds						
					Qvalue	
11) Tert butyl alcohol	4.966	59	432	Below Cal	#	77
16) Acetone	3.961	43	33425	58.943	ug/l	96
17) Carbon Disulfide	4.204	76	41095	8.280	ug/l	98
18) Methyl Acetate	4.497	43	1857	1.300	ug/l	93
25) 2-Butanone	7.003	43	2407	3.080	ug/l	# 88
27) cis-1,2-Dichloroethene	7.003	96	3977	2.139	ug/l	88
29) Tetrahydrofuran	7.368	42	533	1.085	ug/l	# 86
31) Cyclohexane	7.795	56	3442	1.039	ug/l	# 16
36) 1,1-Dichloropropene	7.801	75	12079	3.936	ug/l	# 49
37) Ethyl Acetate	7.003	43	2407	1.135	ug/l	# 1
38) Carbon Tetrachloride	7.795	117	13961	4.179	ug/l	# 16
44) Trichloroethene	8.941	130	5790	2.640	ug/l	99
55) 1,1,2-Trichloroethane	10.618	97	1692	1.045	ug/l	# 23
56) Ethyl methacrylate	10.484	69	6322	2.442	ug/l	# 78
59) 2-Hexanone	10.807	43	2135	1.469	ug/l	# 31
60) Dibromochloromethane	10.721	129	44208	22.146	ug/l	# 11
64) Tetrachloroethene	10.721	164	50394	20.122	ug/l	97
74) N-amyl acetate	12.124	43	27151	4.837	ug/l	# 47
75) 1,1,2,2-Tetrachloroethane	12.563	83	16025	5.298	ug/l	# 1
76) 1,2,3-Trichloropropane	12.483	75	85565	38.658	ug/l	# 100
81) trans-1,4-Dichloro-2-b...	12.483	75	85565	71.073	ug/l	# 10
90) Hexachloroethane	13.971	117	3309	1.248	ug/l	# 6
92) 1,2-Dibromo-3-Chloropr...	14.385	75	1081	1.801	ug/l	# 1
94) Hexachlorobutadiene	15.111	225	3284	1.217	ug/l	92

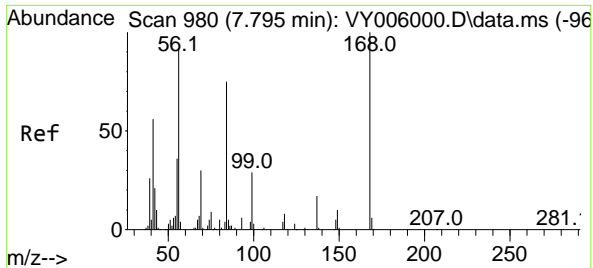
(#) = qualifier out of range (m) = manual integration (+) = signals summed

Data Path : Z:\voasrv\HPCHEM1\MSVOA_Y\Data\VY091621\
 Data File : VY006044.D
 Acq On : 16 Sep 2021 13:47
 Operator : SY/MD
 Sample : M3733-05RE
 Misc : 6.50G/5ML/MSVOA_Y/SOIL
 ALS Vial : 9 Sample Multiplier: 1

Instrument :
 MSVOA_Y
Client Sampled :
 NAPL-AREA-01-(18-20)RE

Quant Time: Sep 17 02:44:47 2021
 Quant Method : Z:\voasrv\HPCHEM1\MSVOA_Y\methods\82Y091421S.M
 Quant Title : SW846 8260
 QLast Update : Wed Sep 15 05:01:47 2021
 Response via : Initial Calibration

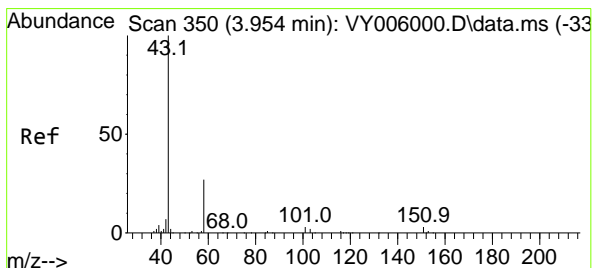
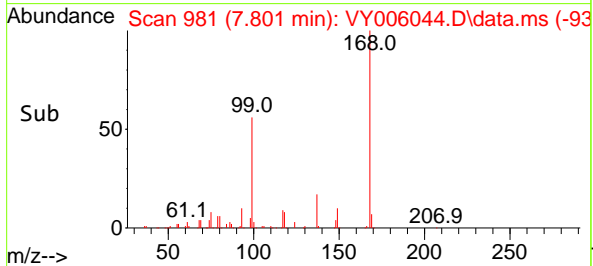
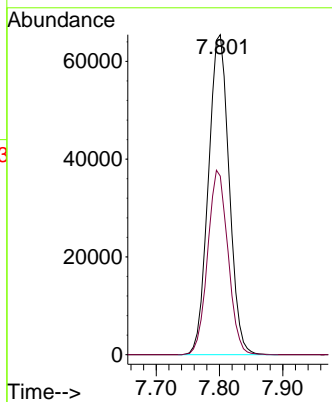
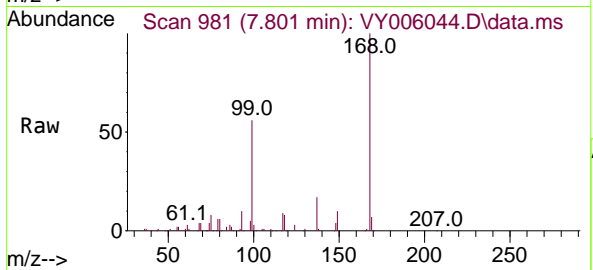




#1
 Pentafluorobenzene
 Concen: 50.000 ug/l
 RT: 7.801 min Scan# 981
 Delta R.T. 0.006 min
 Lab File: VY006044.D
 Acq: 16 Sep 2021 13:47

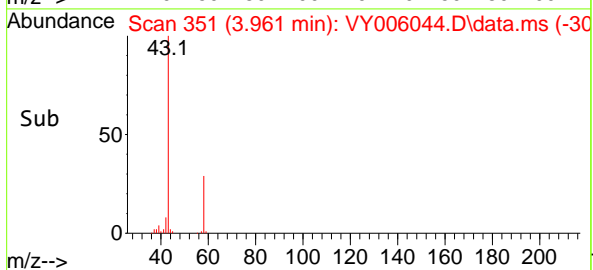
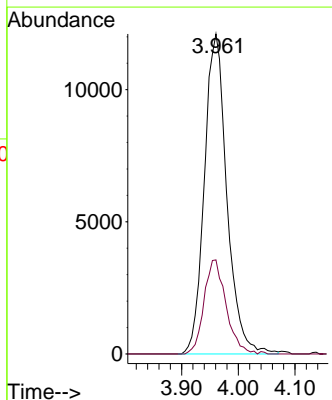
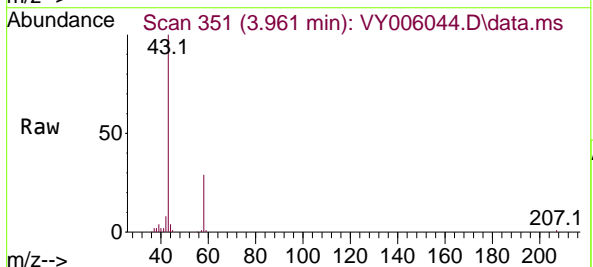
Instrument :
 MSVOA_Y
 ClientSampleId :
 NAPL-AREA-01-(18-20)RE

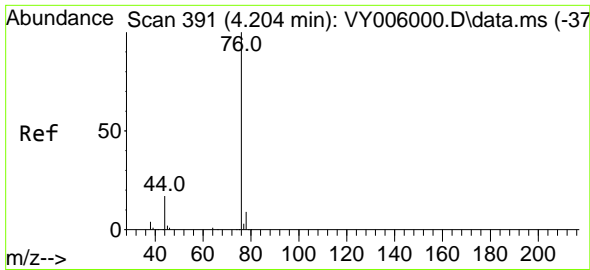
Tgt Ion:168 Resp: 148843
 Ion Ratio Lower Upper
 168 100
 99 55.8 46.9 70.3



#16
 Acetone
 Concen: 58.943 ug/l
 RT: 3.961 min Scan# 351
 Delta R.T. 0.006 min
 Lab File: VY006044.D
 Acq: 16 Sep 2021 13:47

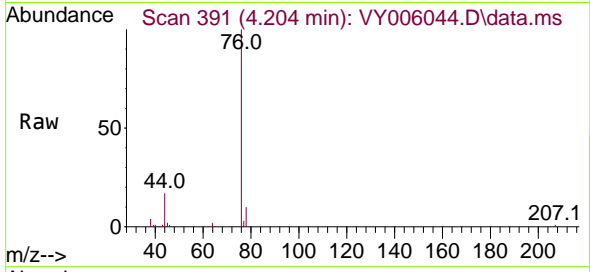
Tgt Ion: 43 Resp: 33425
 Ion Ratio Lower Upper
 43 100
 58 29.4 22.0 33.0



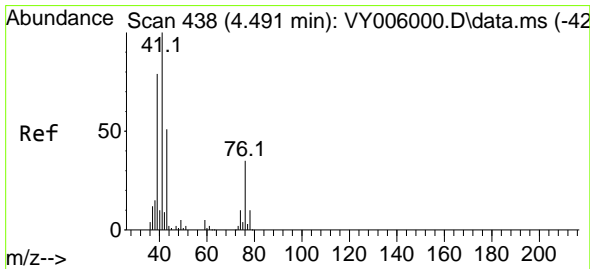
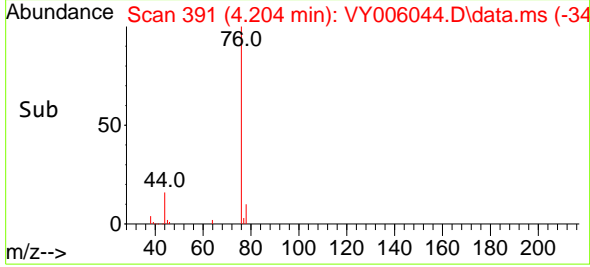
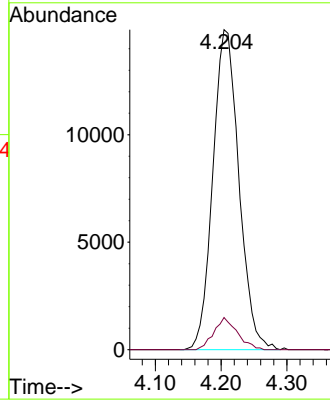


#17
 Carbon Disulfide
 Concen: 8.280 ug/l
 RT: 4.204 min Scan# 391
 Delta R.T. 0.000 min
 Lab File: VY006044.D
 Acq: 16 Sep 2021 13:47

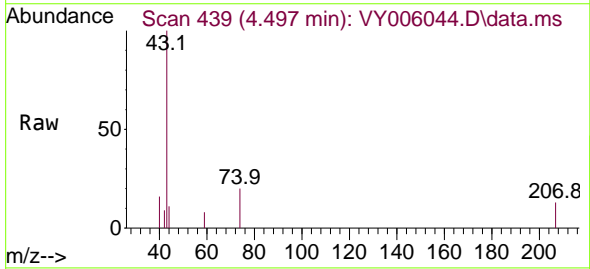
Instrument :
 MSVOA_Y
 ClientSampled :
 NAPL-AREA-01-(18-20)RE



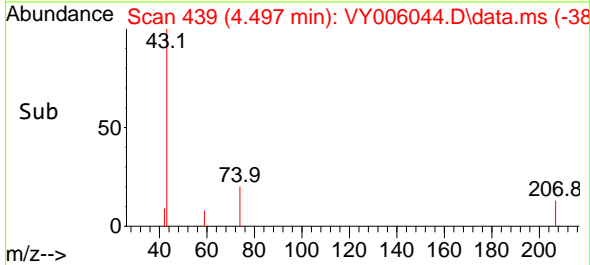
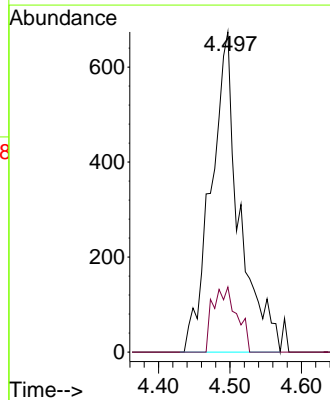
Tgt Ion: 76 Resp: 41095
 Ion Ratio Lower Upper
 76 100
 78 10.1 7.4 11.0

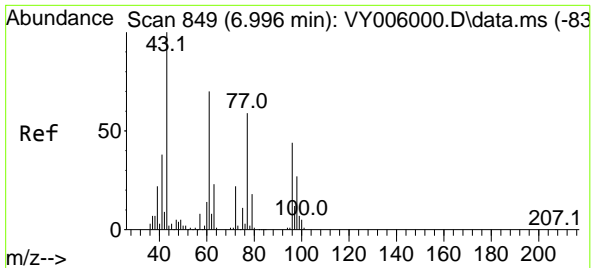


#18
 Methyl Acetate
 Concen: 1.300 ug/l
 RT: 4.497 min Scan# 439
 Delta R.T. 0.006 min
 Lab File: VY006044.D
 Acq: 16 Sep 2021 13:47



Tgt Ion: 43 Resp: 1857
 Ion Ratio Lower Upper
 43 100
 74 17.3 16.6 24.8

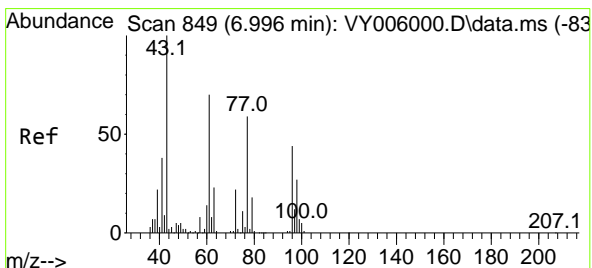
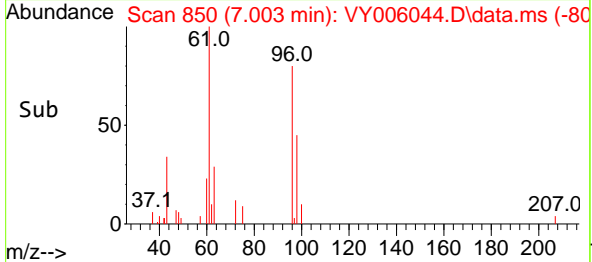
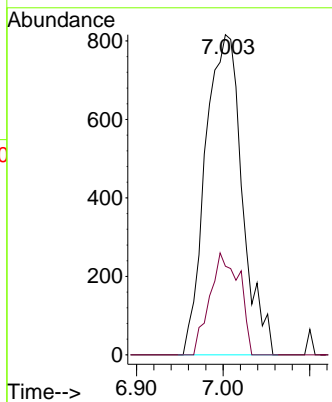
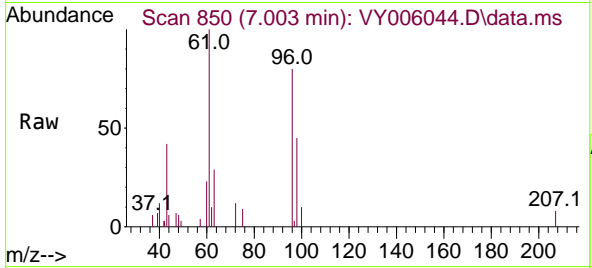




#25
 2-Butanone
 Concen: 3.080 ug/l
 RT: 7.003 min Scan# 850
 Delta R.T. 0.006 min
 Lab File: VY006044.D
 Acq: 16 Sep 2021 13:47

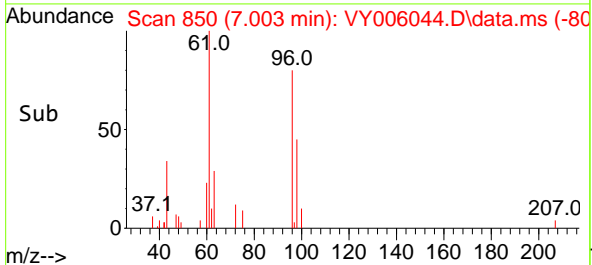
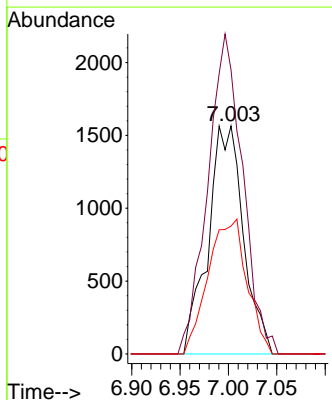
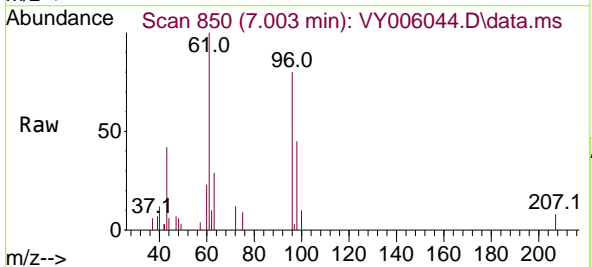
Instrument :
 MSVOA_Y
 ClientSampled :
 NAPL-AREA-01-(18-20)RE

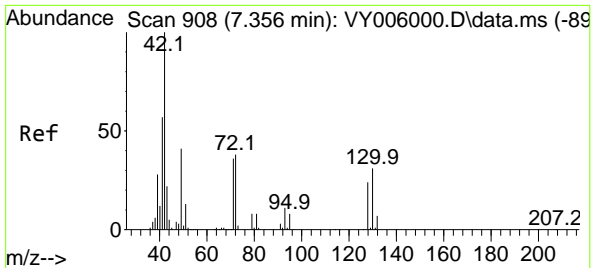
Tgt Ion: 43 Resp: 2407
 Ion Ratio Lower Upper
 43 100
 72 27.7 17.7 26.5#



#27
 cis-1,2-Dichloroethene
 Concen: 2.139 ug/l
 RT: 7.003 min Scan# 850
 Delta R.T. 0.006 min
 Lab File: VY006044.D
 Acq: 16 Sep 2021 13:47

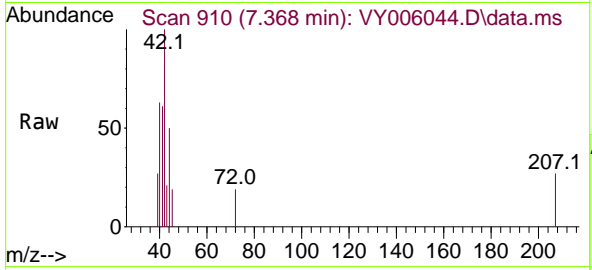
Tgt Ion: 96 Resp: 3977
 Ion Ratio Lower Upper
 96 100
 61 138.8 0.0 319.8
 98 64.9 0.0 127.0



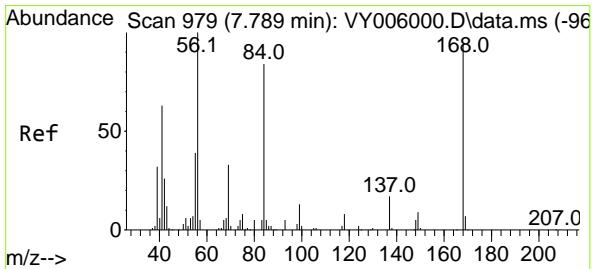
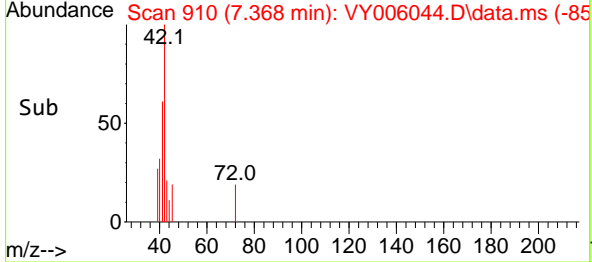
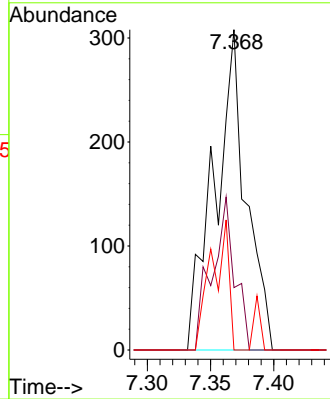


#29
 Tetrahydrofuran
 Concen: 1.085 ug/l
 RT: 7.368 min Scan# 910
 Delta R.T. 0.012 min
 Lab File: VY006044.D
 Acq: 16 Sep 2021 13:47

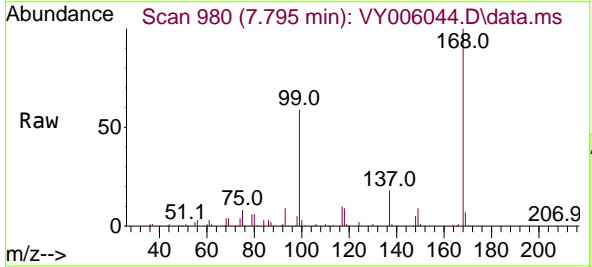
Instrument :
 MSVOA_Y
 Client Sampled :
 NAPL-AREA-01-(18-20)RE



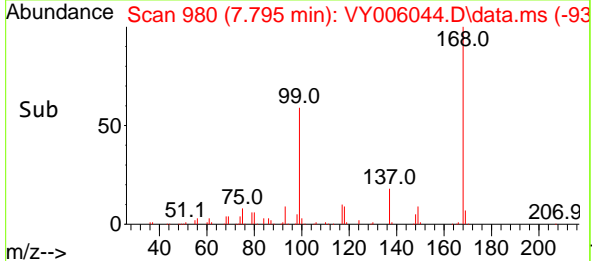
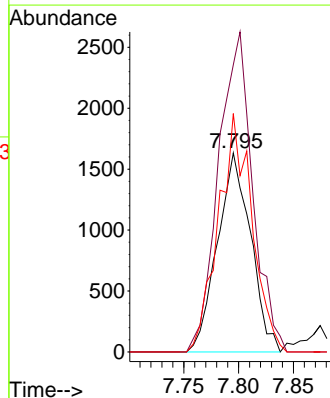
Tgt Ion	Resp	Lower	Upper
42	100		
72	34.5	30.3	45.5
71	22.7	29.0	43.4#

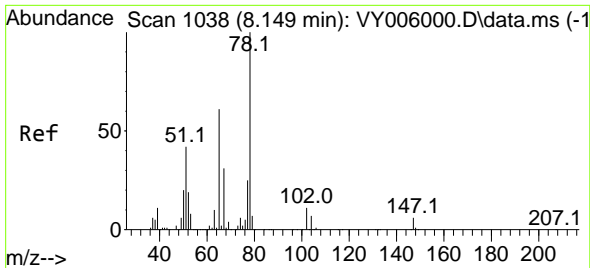


#31
 Cyclohexane
 Concen: 1.039 ug/l
 RT: 7.795 min Scan# 980
 Delta R.T. 0.006 min
 Lab File: VY006044.D
 Acq: 16 Sep 2021 13:47



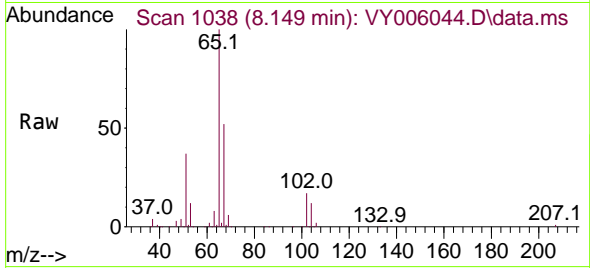
Tgt Ion	Resp	Lower	Upper
56	100		
69	144.3	26.7	40.1#
84	119.8	67.2	100.8#



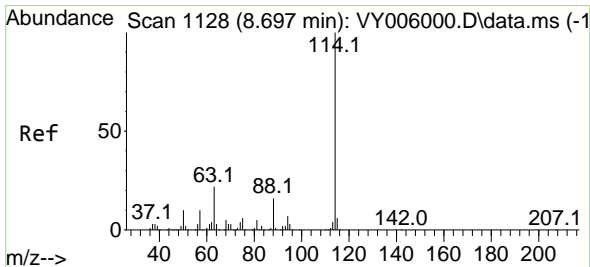
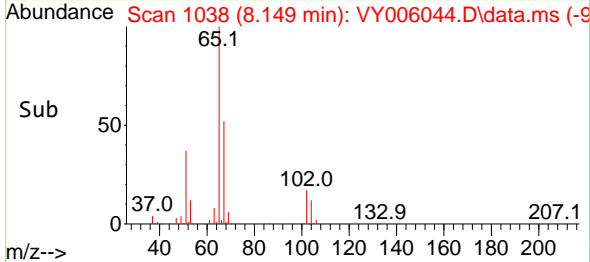
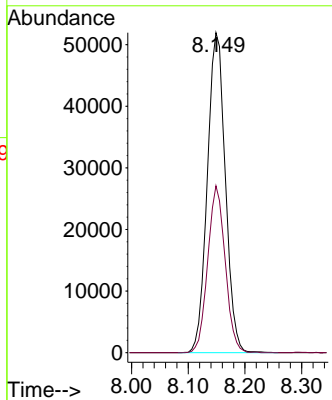


#33
 1,2-Dichloroethane-d4
 Concen: 55.386 ug/l
 RT: 8.149 min Scan# 1038
 Delta R.T. 0.000 min
 Lab File: VY006044.D
 Acq: 16 Sep 2021 13:47

Instrument :
 MSVOA_Y
 ClientSampled :
 NAPL-AREA-01-(18-20)RE

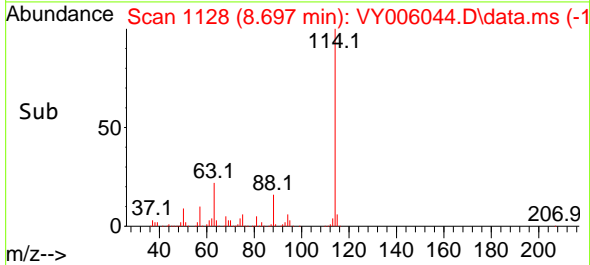
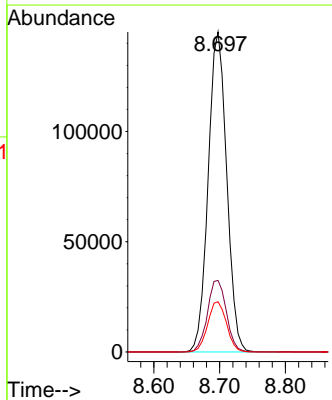
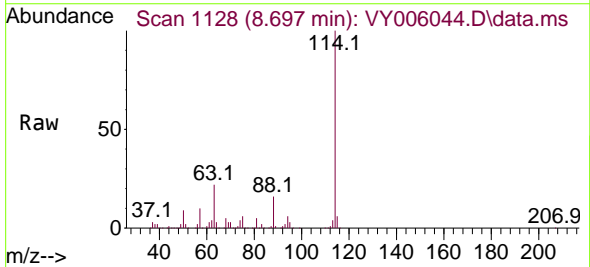


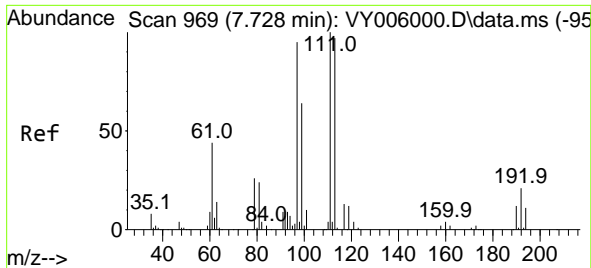
Tgt Ion: 65 Resp: 114512
 Ion Ratio Lower Upper
 65 100
 67 50.4 0.0 99.4



#34
 1,4-Difluorobenzene
 Concen: 50.000 ug/l
 RT: 8.697 min Scan# 1128
 Delta R.T. 0.000 min
 Lab File: VY006044.D
 Acq: 16 Sep 2021 13:47

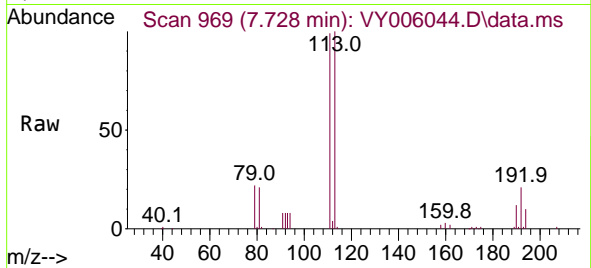
Tgt Ion: 114 Resp: 284309
 Ion Ratio Lower Upper
 114 100
 63 22.3 0.0 43.2
 88 15.7 0.0 31.8



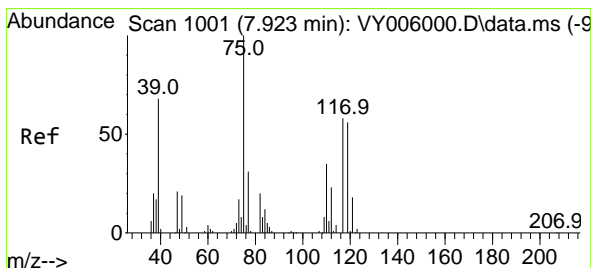
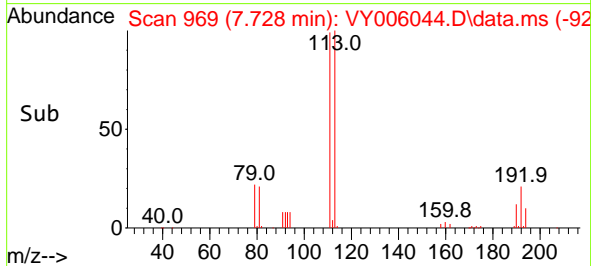
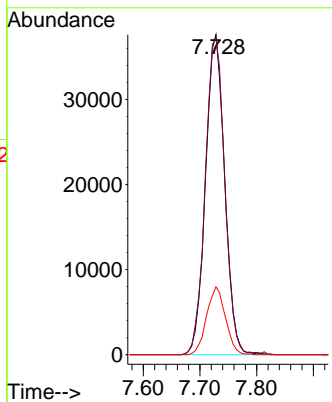


#35
 Dibromofluoromethane
 Concen: 50.080 ug/l
 RT: 7.728 min Scan# 969
 Delta R.T. 0.000 min
 Lab File: VY006044.D
 Acq: 16 Sep 2021 13:47

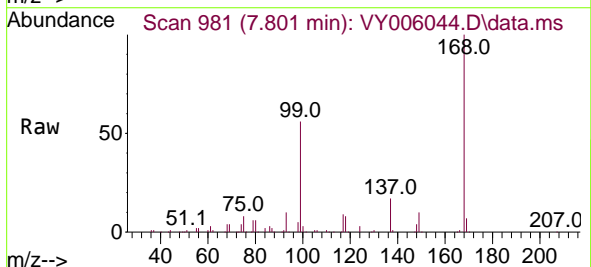
Instrument :
 MSVOA_Y
 ClientSampleId :
 NAPL-AREA-01-(18-20)RE



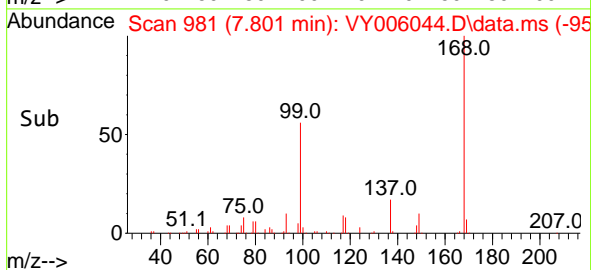
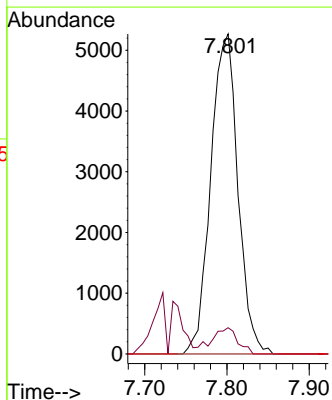
Tgt Ion	Resp	Lower	Upper
113	100		
111	100.5	82.6	124.0
192	20.8	17.6	26.4

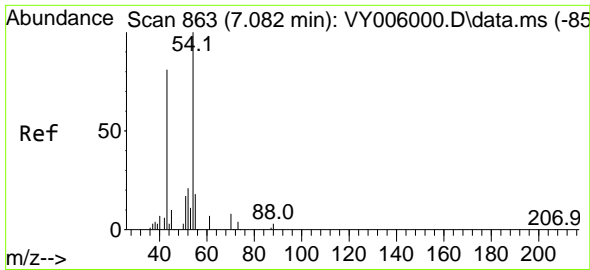


#36
 1,1-Dichloropropene
 Concen: 3.936 ug/l
 RT: 7.801 min Scan# 981
 Delta R.T. -0.122 min
 Lab File: VY006044.D
 Acq: 16 Sep 2021 13:47



Tgt Ion	Resp	Lower	Upper
75	100		
110	7.7	17.1	51.2#
77	0.0	24.4	36.6#



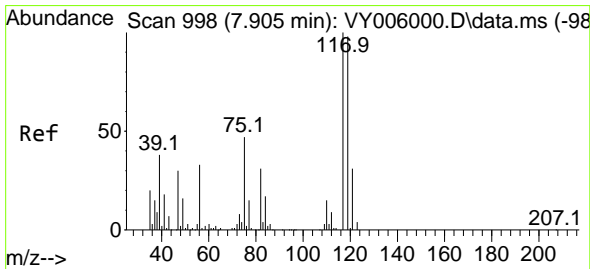
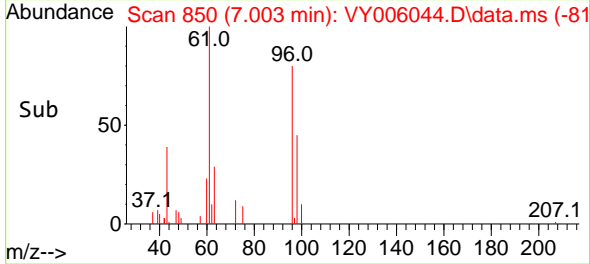
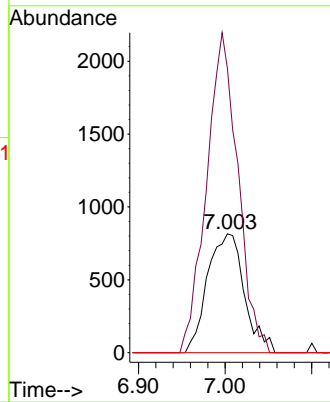
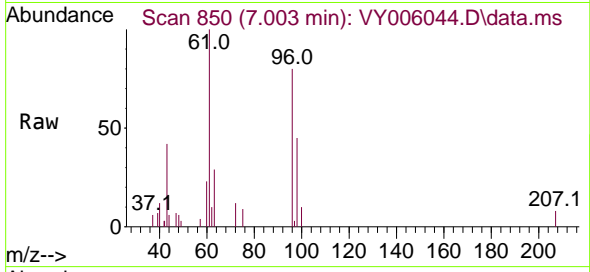


#37
 Ethyl Acetate
 Concen: 1.135 ug/l
 RT: 7.003 min Scan# 850
 Delta R.T. -0.079 min
 Lab File: VY006044.D
 Acq: 16 Sep 2021 13:47

Instrument :
 MSVOA_Y
 ClientSampleId :
 NAPL-AREA-01-(18-20)RE

Tgt Ion: 43 Resp: 2407

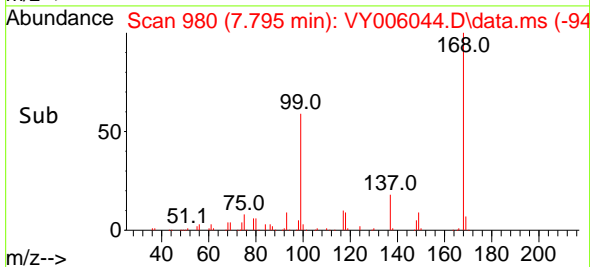
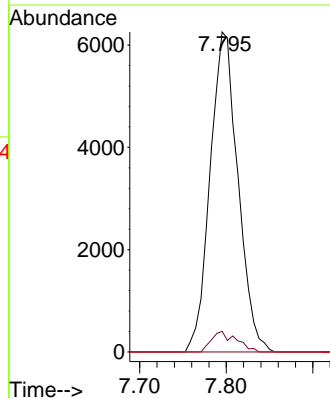
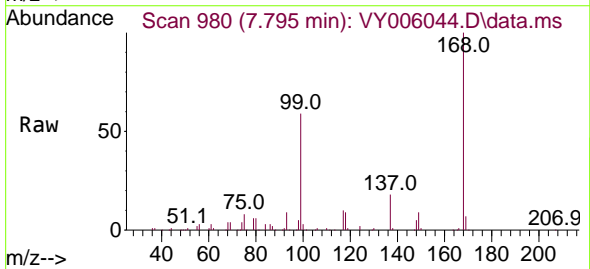
Ion	Ratio	Lower	Upper
43	100		
61	229.4	9.7	14.5#
70	0.0	7.1	10.7#

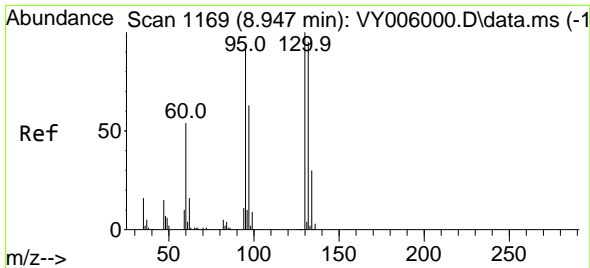


#38
 Carbon Tetrachloride
 Concen: 4.179 ug/l
 RT: 7.795 min Scan# 980
 Delta R.T. -0.110 min
 Lab File: VY006044.D
 Acq: 16 Sep 2021 13:47

Tgt Ion: 117 Resp: 13961

Ion	Ratio	Lower	Upper
117	100		
119	6.4	77.9	116.9#
121	0.0	24.8	37.2#

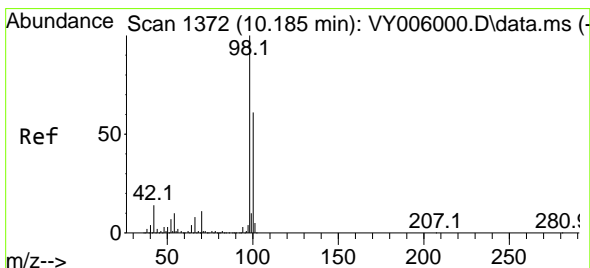
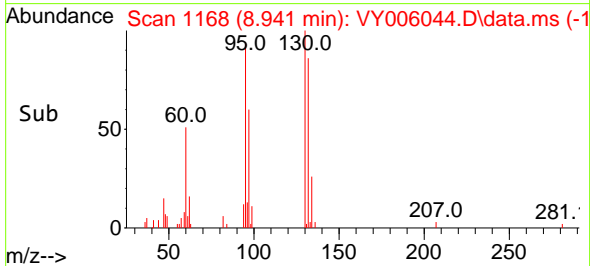
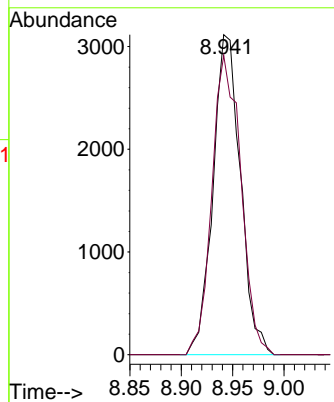
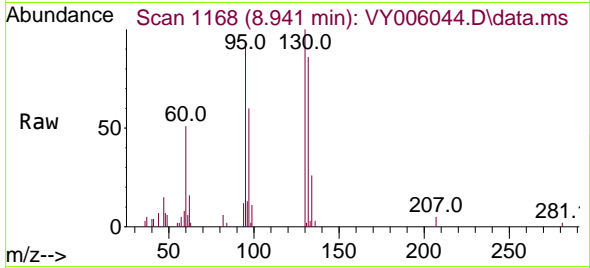




#44
 Trichloroethene
 Concen: 2.640 ug/l
 RT: 8.941 min Scan# 1168
 Delta R.T. -0.006 min
 Lab File: VY006044.D
 Acq: 16 Sep 2021 13:47

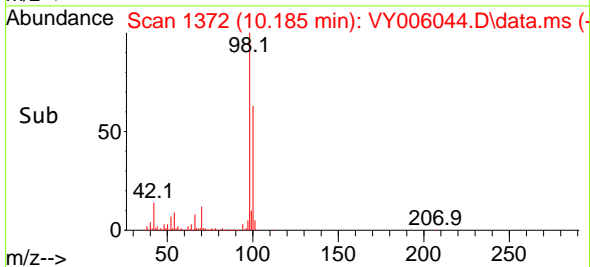
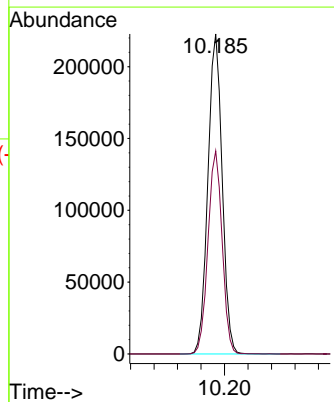
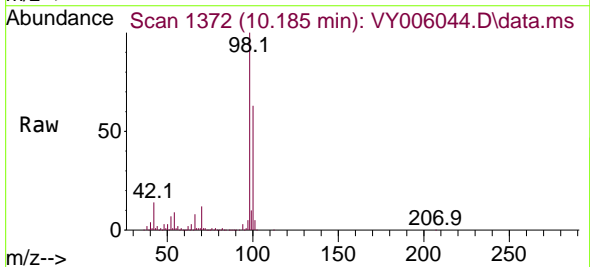
Instrument :
 MSVOA_Y
 ClientSampleId :
 NAPL-AREA-01-(18-20)RE

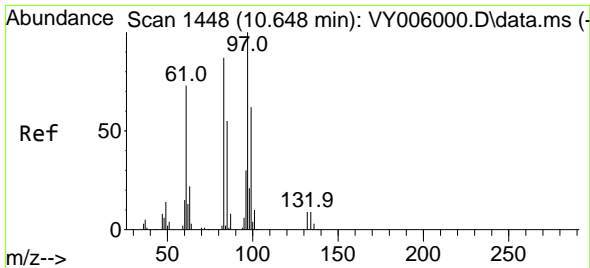
Tgt Ion:130 Resp: 5790
 Ion Ratio Lower Upper
 130 100
 95 93.5 0.0 188.2



#50
 Toluene-d8
 Concen: 49.821 ug/l
 RT: 10.185 min Scan# 1372
 Delta R.T. 0.000 min
 Lab File: VY006044.D
 Acq: 16 Sep 2021 13:47

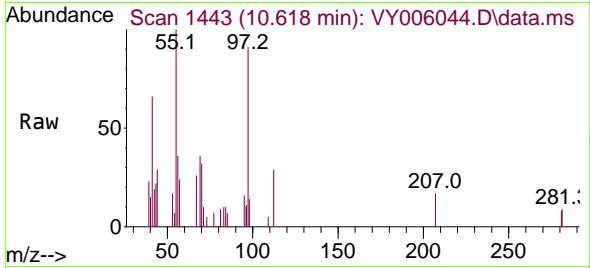
Tgt Ion: 98 Resp: 374968
 Ion Ratio Lower Upper
 98 100
 100 63.0 50.2 75.2



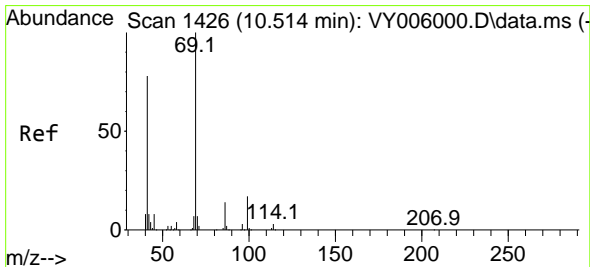
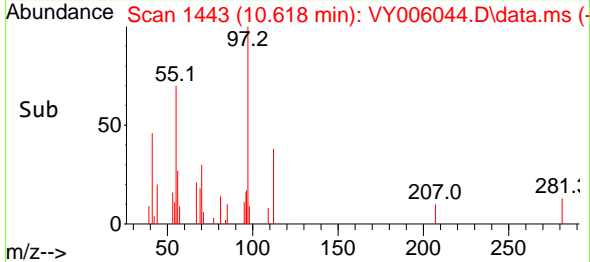
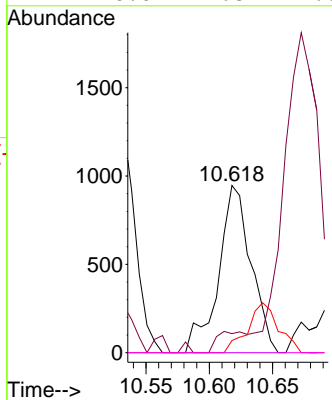


#55
 1,1,2-Trichloroethane
 Concen: 1.045 ug/l
 RT: 10.618 min Scan# 1443
 Delta R.T. -0.030 min
 Lab File: VY006044.D
 Acq: 16 Sep 2021 13:47

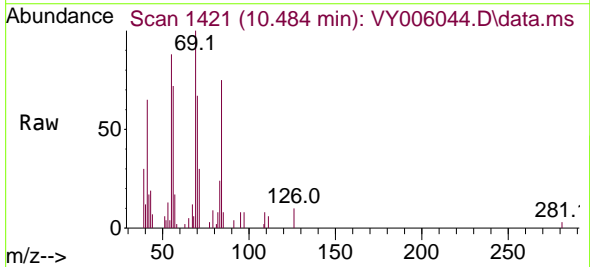
Instrument :
 MSVOA_Y
 ClientSampleId :
 NAPL-AREA-01-(18-20)RE



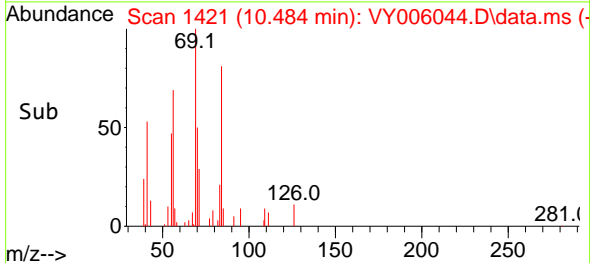
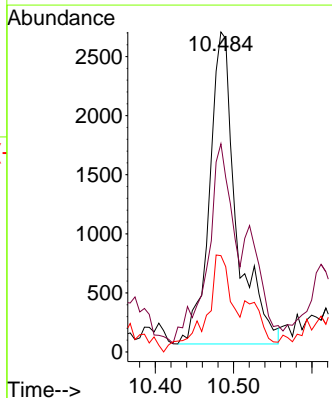
Tgt Ion	Resp	Lower	Upper
97	100		
83	11.4	69.8	104.8#
85	7.3	44.3	66.5#
99	0.0	49.8	74.6#

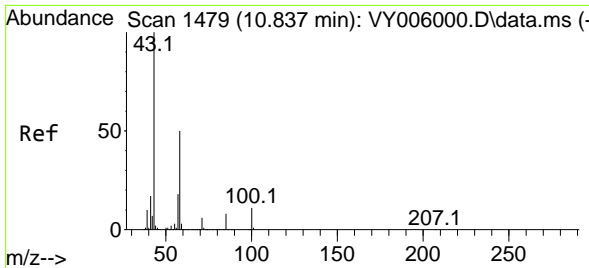


#56
 Ethyl methacrylate
 Concen: 2.442 ug/l
 RT: 10.484 min Scan# 1421
 Delta R.T. -0.030 min
 Lab File: VY006044.D
 Acq: 16 Sep 2021 13:47



Tgt Ion	Resp	Lower	Upper
69	100		
41	60.0	63.4	95.0#
39	29.8	35.8	53.8#

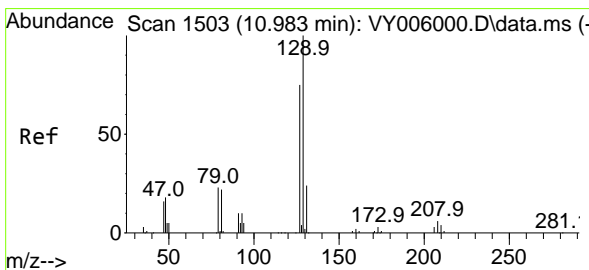
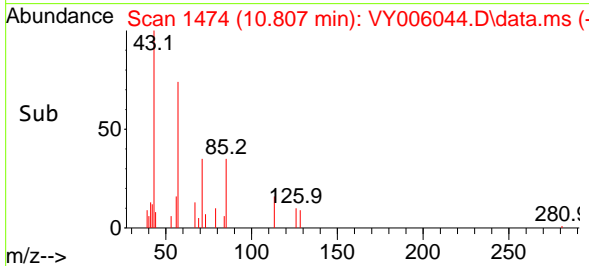
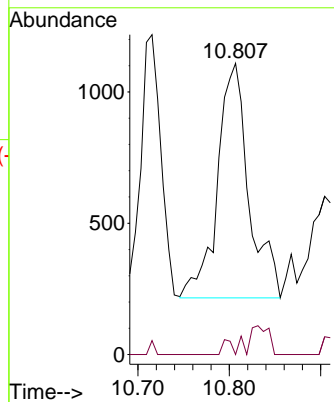
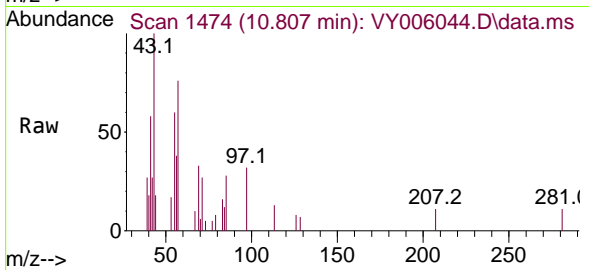




#59
 2-Hexanone
 Concen: 1.469 ug/l
 RT: 10.807 min Scan# 1474
 Delta R.T. -0.030 min
 Lab File: VY006044.D
 Acq: 16 Sep 2021 13:47

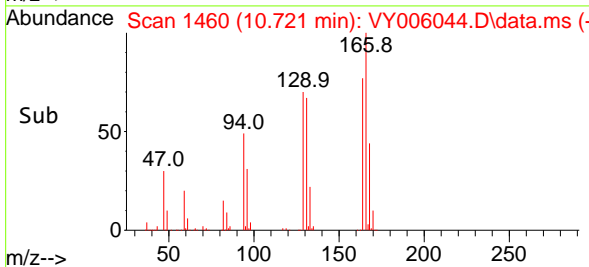
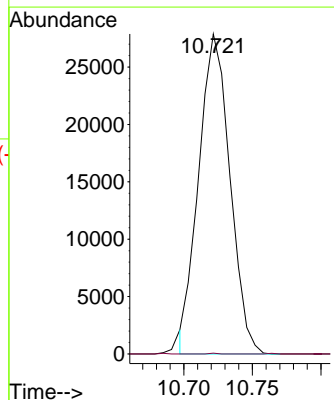
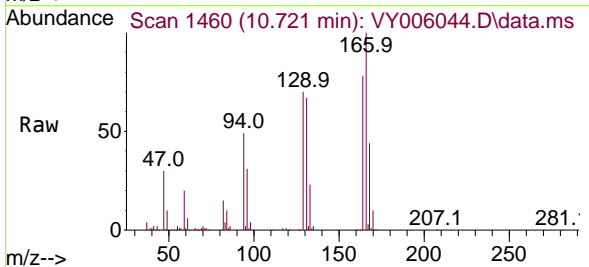
Instrument :
 MSVOA_Y
 ClientSampled :
 NAPL-AREA-01-(18-20)RE

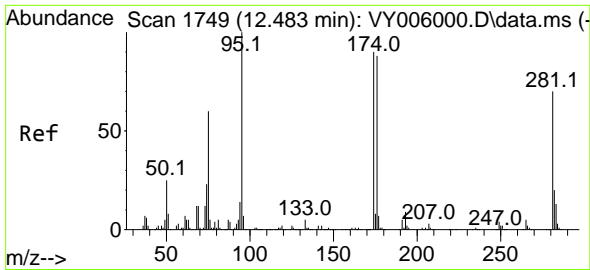
Tgt Ion: 43 Resp: 2135
 Ion Ratio Lower Upper
 43 100
 58 1.9 24.4 73.4#



#60
 Dibromochloromethane
 Concen: 22.146 ug/l
 RT: 10.721 min Scan# 1460
 Delta R.T. -0.262 min
 Lab File: VY006044.D
 Acq: 16 Sep 2021 13:47

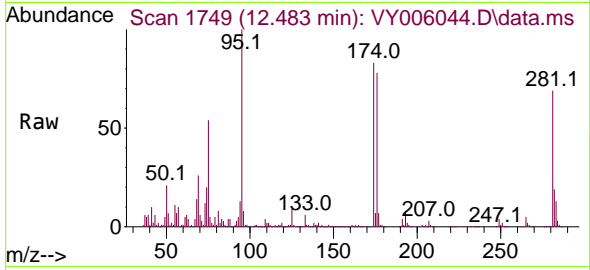
Tgt Ion:129 Resp: 44208
 Ion Ratio Lower Upper
 129 100
 127 0.1 38.7 116.1#



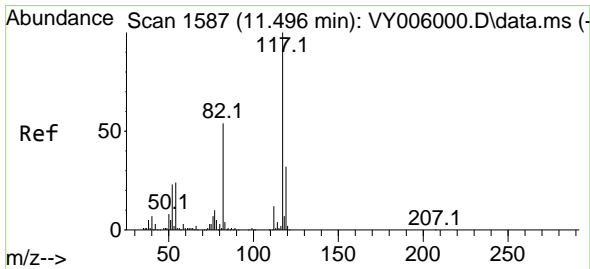
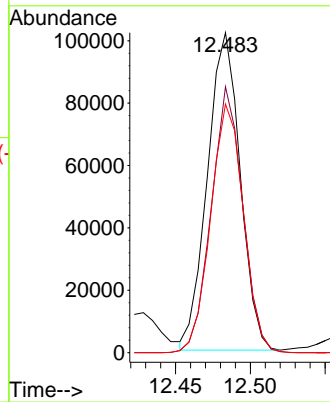
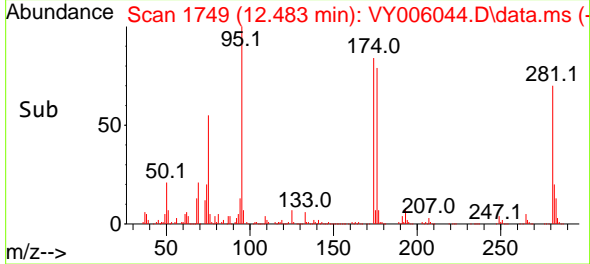


#62
 4-Bromofluorobenzene
 Concen: 60.668 ug/l
 RT: 12.483 min Scan# 1749
 Delta R.T. 0.000 min
 Lab File: VY006044.D
 Acq: 16 Sep 2021 13:47

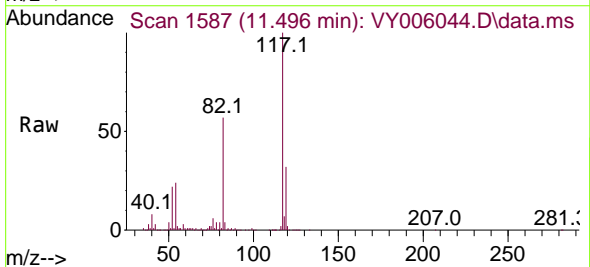
Instrument :
 MSVOA_Y
 ClientSampleId :
 NAPL-AREA-01-(18-20)RE



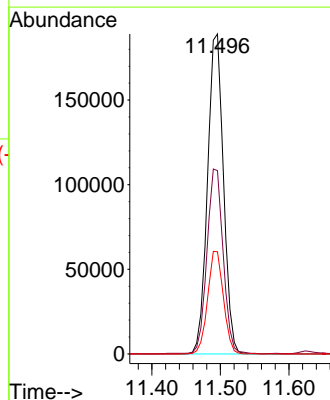
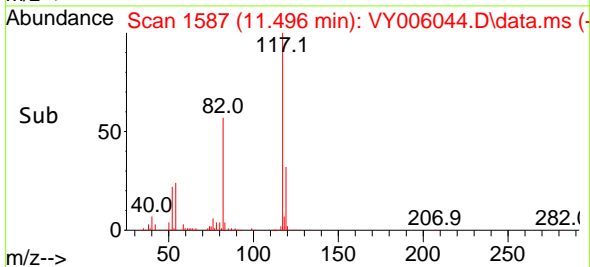
Tgt Ion: 95 Resp: 155026
 Ion Ratio Lower Upper
 95 100
 174 80.3 0.0 177.0
 176 78.4 0.0 175.8

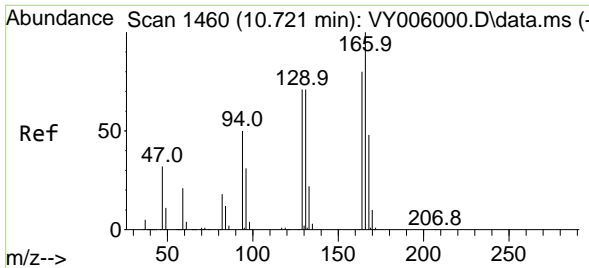


#63
 Chlorobenzene-d5
 Concen: 50.000 ug/l
 RT: 11.496 min Scan# 1587
 Delta R.T. 0.000 min
 Lab File: VY006044.D
 Acq: 16 Sep 2021 13:47



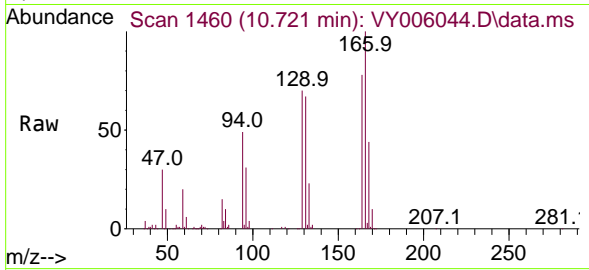
Tgt Ion: 117 Resp: 306201
 Ion Ratio Lower Upper
 117 100
 82 57.1 43.0 64.4
 119 31.9 25.4 38.0





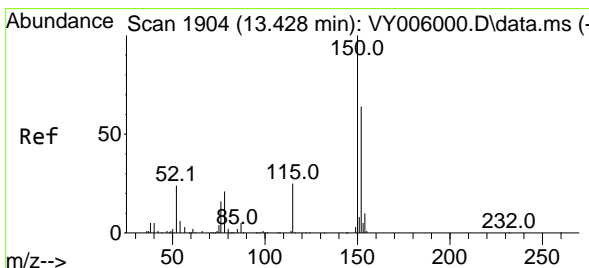
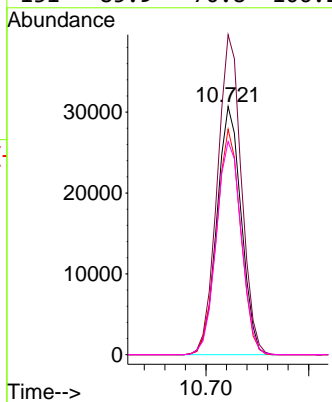
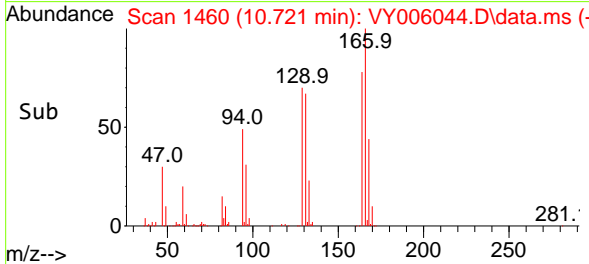
#64
 Tetrachloroethene
 Concen: 20.122 ug/l
 RT: 10.721 min Scan# 1460
 Delta R.T. 0.000 min
 Lab File: VY006044.D
 Acq: 16 Sep 2021 13:47

Instrument :
 MSVOA_Y
 ClientSampleId :
 NAPL-AREA-01-(18-20)RE

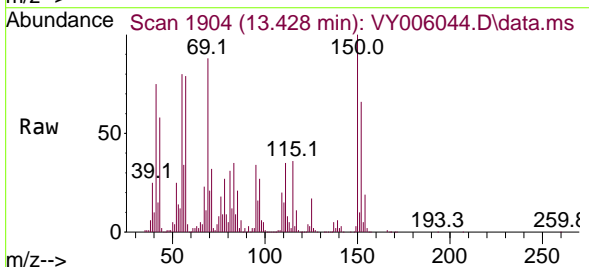


Tgt Ion:164 Resp: 50394

Ion	Ratio	Lower	Upper
164	100		
166	129.0	100.4	150.6
129	90.9	71.4	107.0
131	85.9	70.8	106.2

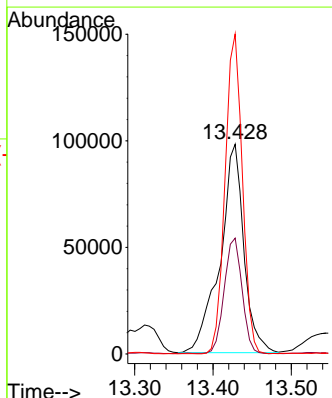
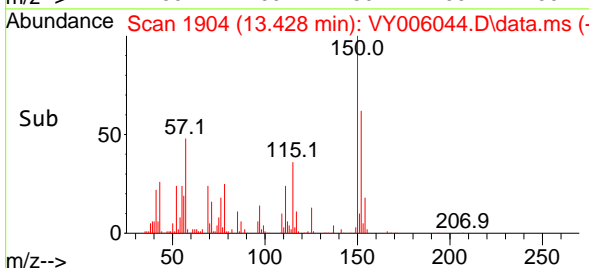


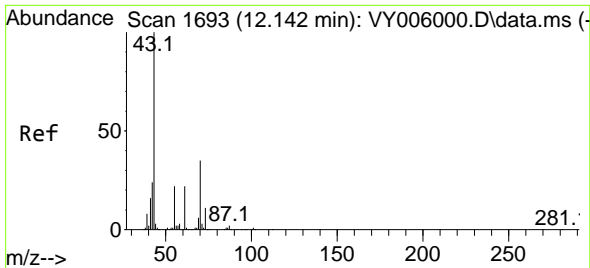
#72
 1,4-Dichlorobenzene-d4
 Concen: 50.000 ug/l
 RT: 13.428 min Scan# 1904
 Delta R.T. 0.000 min
 Lab File: VY006044.D
 Acq: 16 Sep 2021 13:47



Tgt Ion:152 Resp: 207599

Ion	Ratio	Lower	Upper
152	100		
115	41.2	28.2	84.7
150	111.0	0.0	347.6



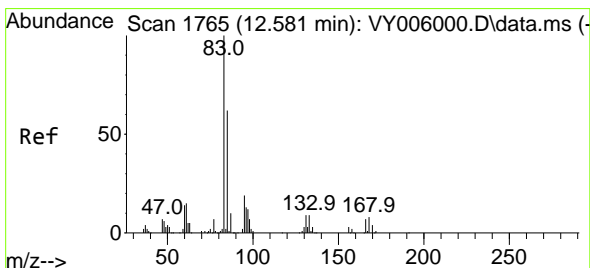
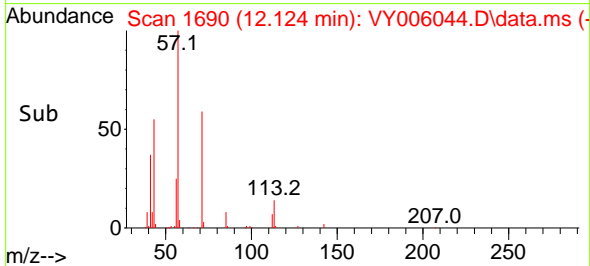
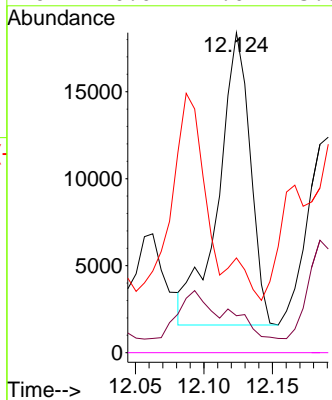
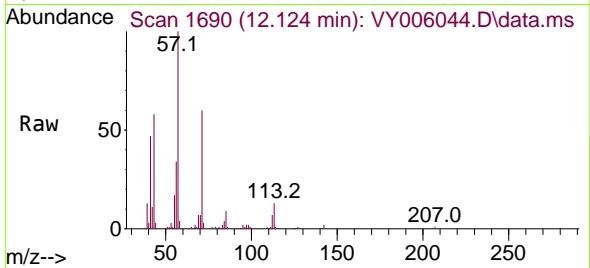


#74
 N-amy1 acetate
 Concen: 4.837 ug/l
 RT: 12.124 min Scan# 1690
 Delta R.T. -0.018 min
 Lab File: VY006044.D
 Acq: 16 Sep 2021 13:47

Instrument :
 MSVOA_Y
 ClientSampleId :
 NAPL-AREA-01-(18-20)RE

Tgt Ion: 43 Resp: 27151

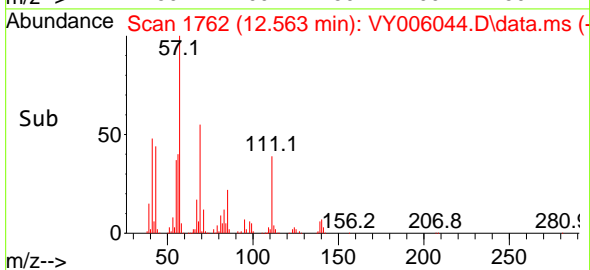
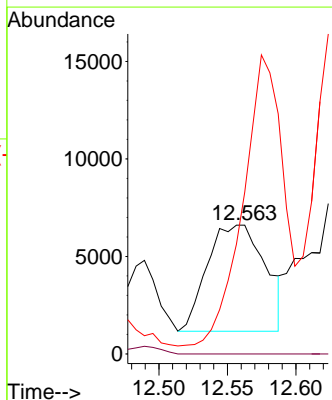
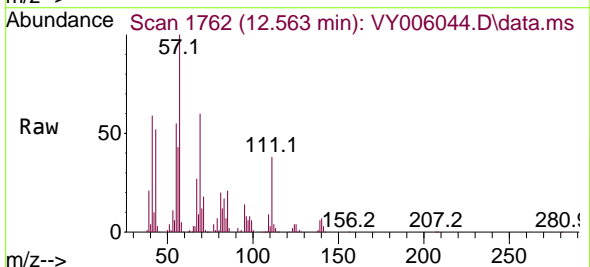
Ion	Ratio	Lower	Upper
43	100		
70	0.0	28.7	43.1#
55	0.0	17.3	25.9#
61	0.0	17.0	25.6#

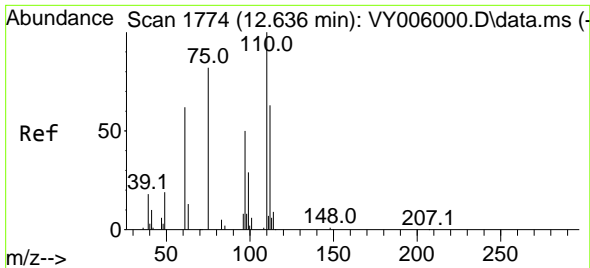


#75
 1,1,2,2-Tetrachloroethane
 Concen: 5.298 ug/l
 RT: 12.563 min Scan# 1762
 Delta R.T. -0.018 min
 Lab File: VY006044.D
 Acq: 16 Sep 2021 13:47

Tgt Ion: 83 Resp: 16025

Ion	Ratio	Lower	Upper
83	100		
131	0.0	5.6	16.8#
85	189.4	32.3	96.8#

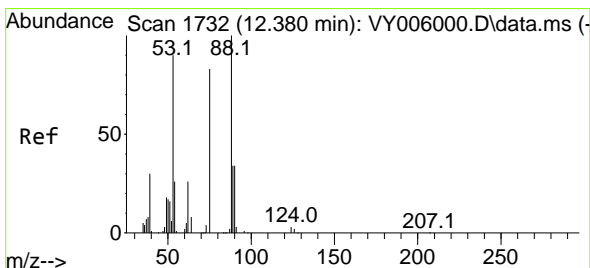
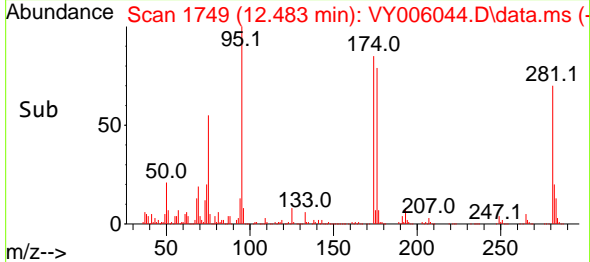
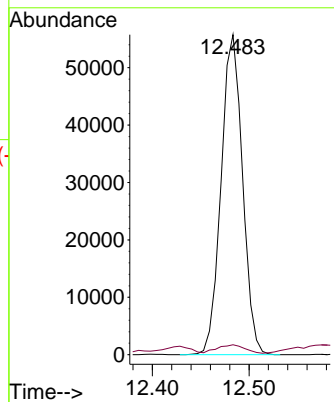
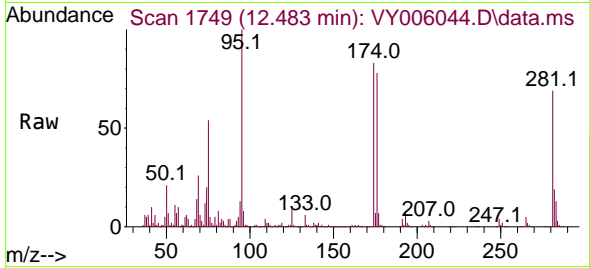




#76
 1,2,3-Trichloropropane
 Concen: 38.658 ug/l
 RT: 12.483 min Scan# 1749
 Delta R.T. -0.152 min
 Lab File: VY006044.D
 Acq: 16 Sep 2021 13:47

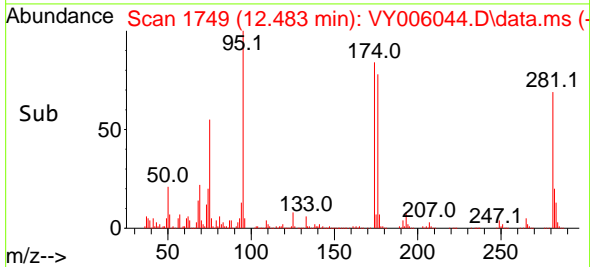
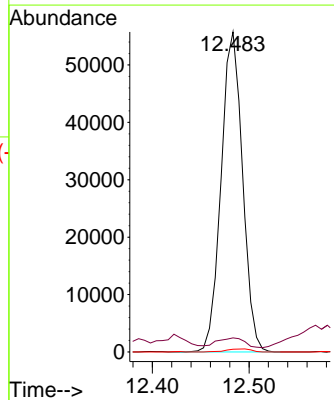
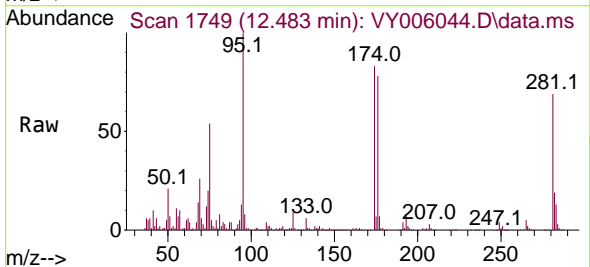
Instrument :
 MSVOA_Y
 ClientSampled :
 NAPL-AREA-01-(18-20)RE

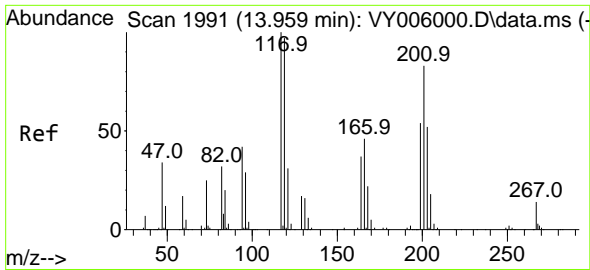
Tgt Ion: 75 Resp: 85565
 Ion Ratio Lower Upper
 75 100
 77 3.3 0.0 0.0#



#81
 trans-1,4-Dichloro-2-butene
 Concen: 71.073 ug/l
 RT: 12.483 min Scan# 1749
 Delta R.T. 0.104 min
 Lab File: VY006044.D
 Acq: 16 Sep 2021 13:47

Tgt Ion: 75 Resp: 85565
 Ion Ratio Lower Upper
 75 100
 53 3.9 85.3 127.9#
 89 1.1 37.0 55.4#

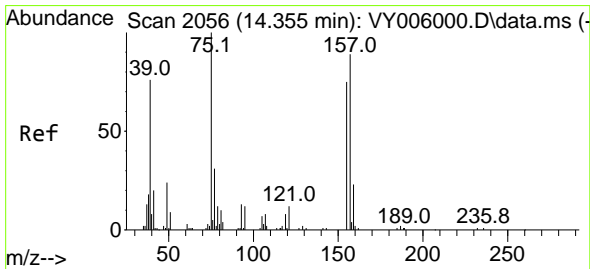
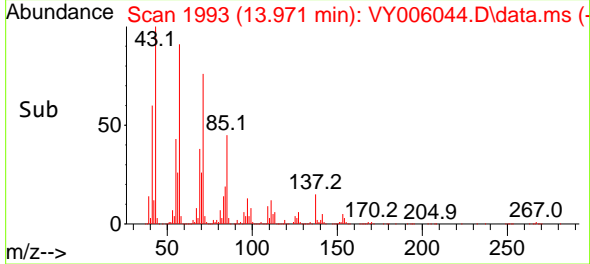
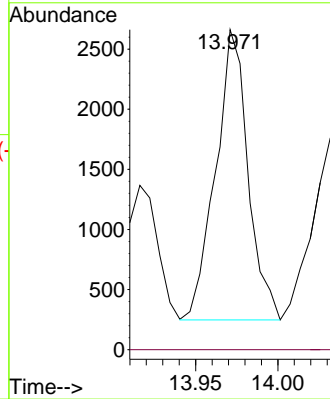
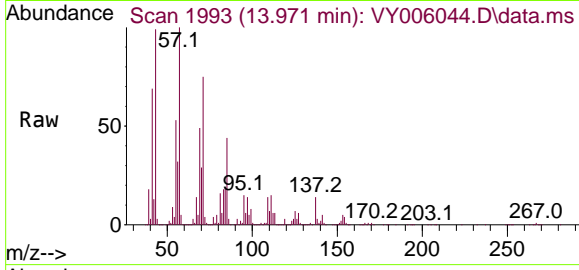




#90
 Hexachloroethane
 Concen: 1.248 ug/l
 RT: 13.971 min Scan# 1993
 Delta R.T. 0.012 min
 Lab File: VY006044.D
 Acq: 16 Sep 2021 13:47

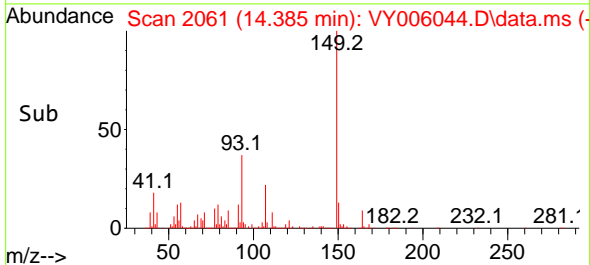
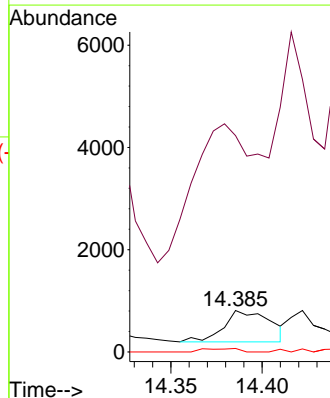
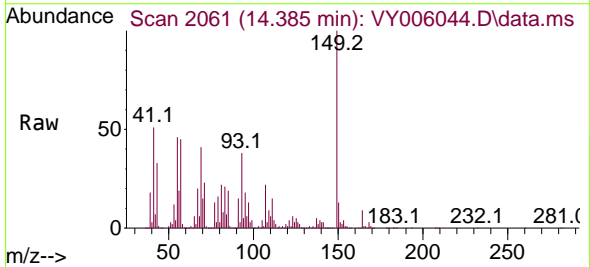
Instrument :
 MSVOA_Y
ClientSampleId :
 NAPL-AREA-01-(18-20)RE

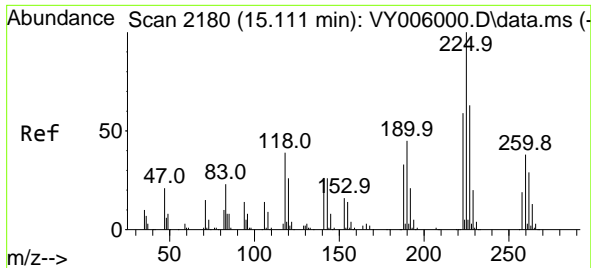
Tgt Ion:117 Resp: 3309
 Ion Ratio Lower Upper
 117 100
 201 0.0 43.0 128.8#



#92
 1,2-Dibromo-3-Chloropropane
 Concen: 1.801 ug/l
 RT: 14.385 min Scan# 2061
 Delta R.T. 0.031 min
 Lab File: VY006044.D
 Acq: 16 Sep 2021 13:47

Tgt Ion: 75 Resp: 1081
 Ion Ratio Lower Upper
 75 100
 155 495.1 38.0 113.9#
 157 8.0 47.8 143.3#





#94
 Hexachlorobutadiene
 Concen: 1.217 ug/l
 RT: 15.111 min Scan# 2180
 Delta R.T. 0.000 min
 Lab File: VY006044.D
 Acq: 16 Sep 2021 13:47

Instrument :
 MSVOA_Y
ClientSampled :
 NAPL-AREA-01-(18-20)RE

Tgt Ion	Resp	Lower	Upper
225	3284		
223	100	65.4	92.3
227	100	71.9	94.7

