

Data Path : Z:\voasrv\HPCHEM1\MSVOA\_Y\Data\VY091724\  
 Data File : VY019580.D  
 Acq On : 17 Sep 2024 13:04  
 Operator : SY/MD  
 Sample : P4014-01  
 Misc : 5.08g/5.0mL/MSVOA\_Y/SOIL/A  
 ALS Vial : 8 Sample Multiplier: 1

Instrument :  
 MSVOA\_Y  
 ClientSampleId :

Quant Time: Sep 18 01:32:00 2024  
 Quant Method : Z:\voasrv\HPCHEM1\MSVOA\_Y\methods\82Y090924S.M  
 Quant Title : SW846 8260  
 QLast Update : Mon Sep 09 16:00:30 2024  
 Response via : Initial Calibration

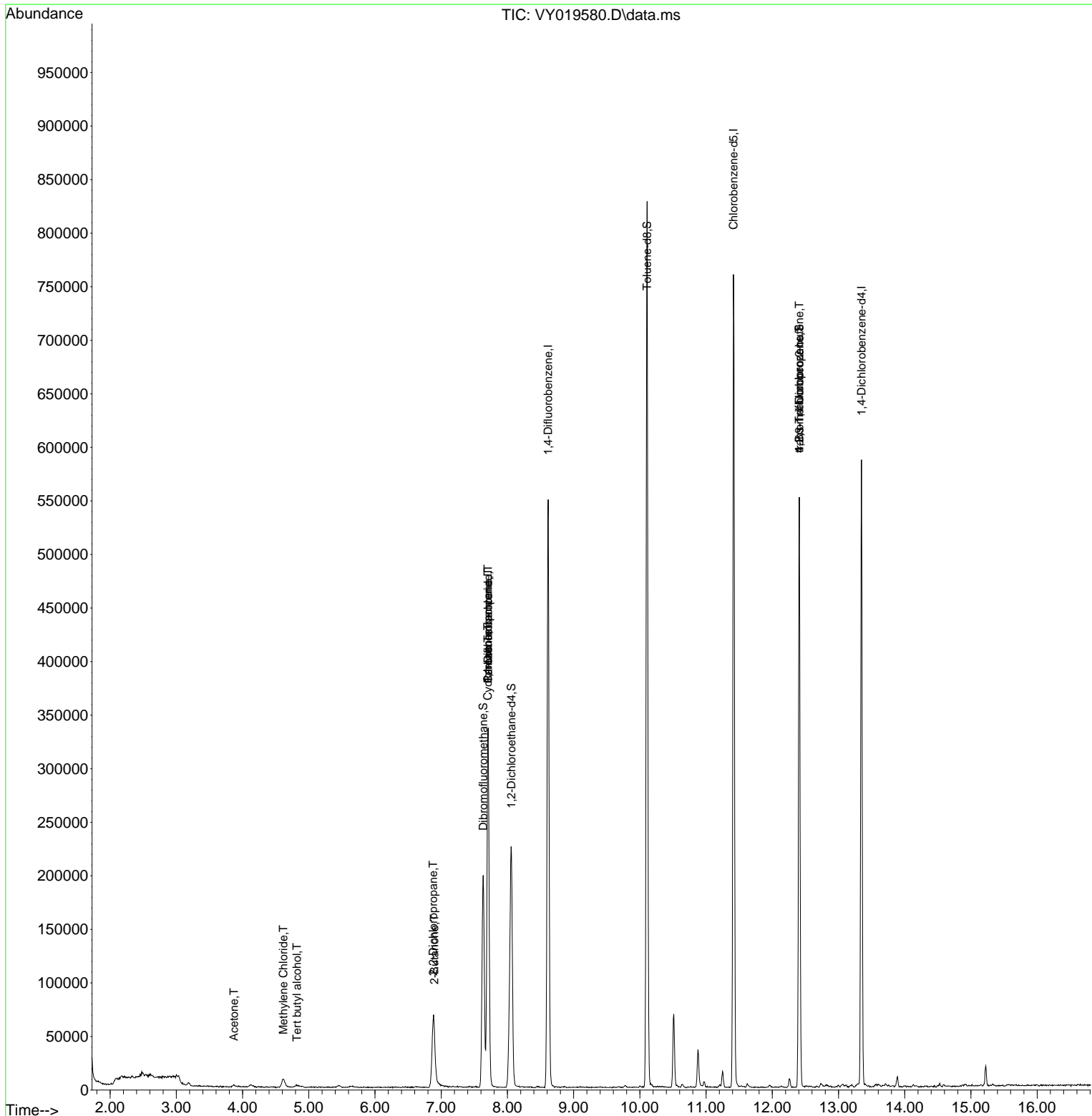
Compound	R.T.	QIon	Response	Conc	Units	Dev(Min)
-----						
Internal Standards						
1) Pentafluorobenzene	7.707	168	247770	50.000	ug/l	# 0.00
34) 1,4-Difluorobenzene	8.616	114	459219	50.000	ug/l	0.00
63) Chlorobenzene-d5	11.414	117	390477	50.000	ug/l	0.00
72) 1,4-Dichlorobenzene-d4	13.347	152	140644	50.000	ug/l	0.00
System Monitoring Compounds						
33) 1,2-Dichloroethane-d4	8.061	65	142364	62.051	ug/l	0.00
Spiked Amount	50.000	Range	50 - 163	Recovery	=	124.100%
35) Dibromofluoromethane	7.634	113	143970	55.295	ug/l	0.00
Spiked Amount	50.000	Range	54 - 147	Recovery	=	110.580%
50) Toluene-d8	10.109	98	534776	55.530	ug/l	0.00
Spiked Amount	50.000	Range	58 - 134	Recovery	=	111.060%
62) 4-Bromofluorobenzene	12.408	95	166028	44.836	ug/l	0.00
Spiked Amount	50.000	Range	29 - 146	Recovery	=	89.680%
Target Compounds						
						Qvalue
2) Dichlorodifluoromethane	1.867	85	176	Below Cal	#	43
11) Tert butyl alcohol	4.824	59	1252	6.757	ug/l	# 93
13) Acrolein	3.659	56	231	Below Cal		94
16) Acetone	3.873	43	2628	4.808	ug/l	# 56
20) Methylene Chloride	4.616	84	5408	2.170	ug/l	# 91
25) 2-Butanone	6.896	43	4893	6.294	ug/l	# 60
26) 2,2-Dichloropropane	6.878	77	5626	1.373	ug/l	# 51
31) Cyclohexane	7.701	56	6196	1.509	ug/l	# 1
36) 1,1-Dichloropropene	7.707	75	21329	6.020	ug/l	# 48
38) Carbon Tetrachloride	7.707	117	26636	6.667	ug/l	# 15
76) 1,2,3-Trichloropropane	12.408	75	89523	67.911	ug/l	# 100
81) trans-1,4-Dichloro-2-b...	12.408	75	89523	130.369	ug/l	# 16
-----						

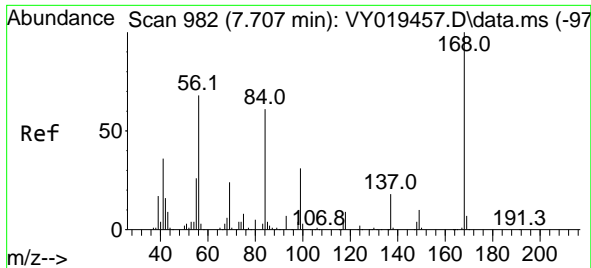
(#) = qualifier out of range (m) = manual integration (+) = signals summed

Data Path : Z:\voasrv\HPCHEM1\MSVOA\_Y\Data\VY091724\  
 Data File : VY019580.D  
 Acq On : 17 Sep 2024 13:04  
 Operator : SY/MD  
 Sample : P4014-01  
 Misc : 5.08g/5.0mL/MSVOA\_Y/SOIL/A  
 ALS Vial : 8 Sample Multiplier: 1

Instrument :  
 MSVOA\_Y  
 ClientSampleId :

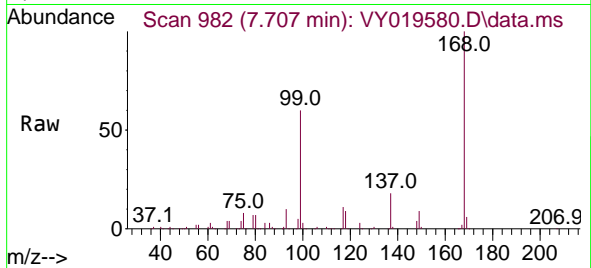
Quant Time: Sep 18 01:32:00 2024  
 Quant Method : Z:\voasrv\HPCHEM1\MSVOA\_Y\methods\82Y090924S.M  
 Quant Title : SW846 8260  
 QLast Update : Mon Sep 09 16:00:30 2024  
 Response via : Initial Calibration



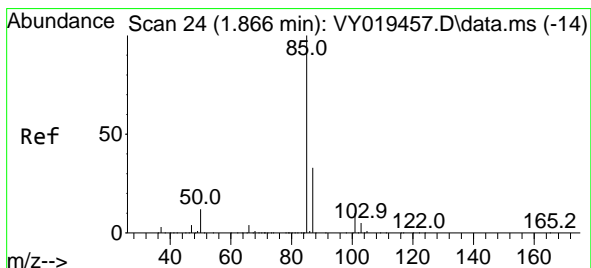
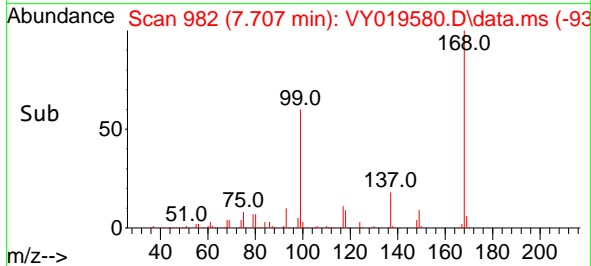
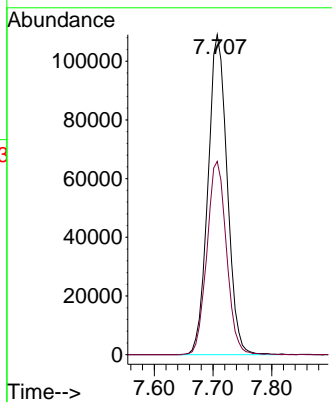


#1  
 Pentafluorobenzene  
 Concen: 50.000 ug/l  
 RT: 7.707 min Scan# 91  
 Delta R.T. 0.000 min  
 Lab File: VY019580.D  
 Acq: 17 Sep 2024 13:04

Instrument :  
 MSVOA\_Y  
 ClientSampleId :

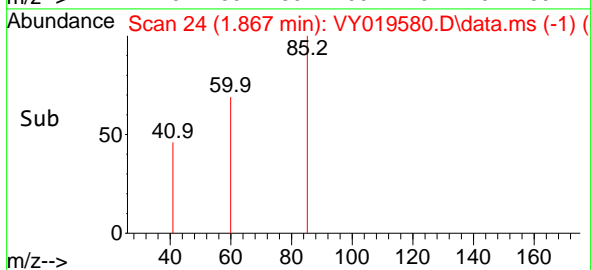
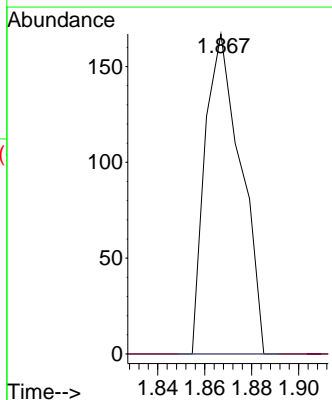
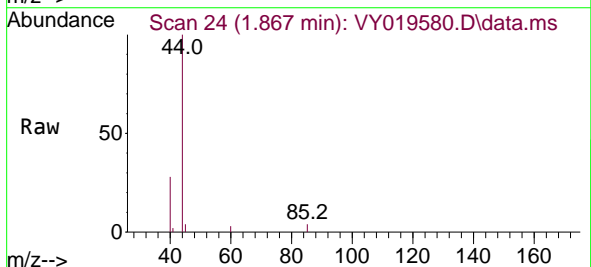


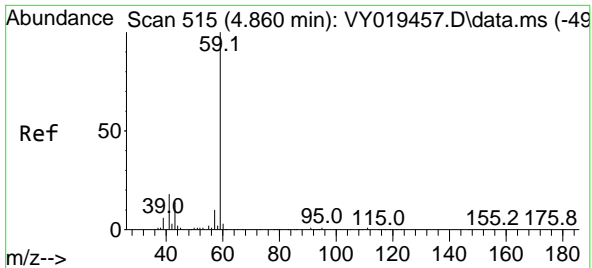
Tgt Ion:168 Resp: 247770  
 Ion Ratio Lower Upper  
 168 100  
 99 60.4 39.1 58.7#



#2  
 Dichlorodifluoromethane  
 Concen: Below Cal  
 RT: 1.867 min Scan# 24  
 Delta R.T. 0.001 min  
 Lab File: VY019580.D  
 Acq: 17 Sep 2024 13:04

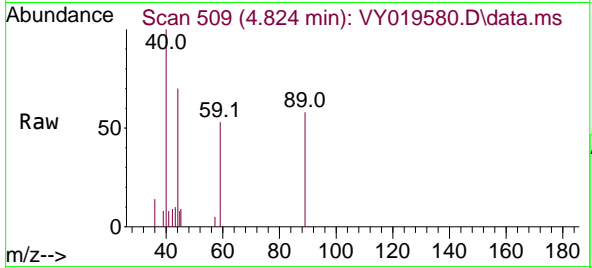
Tgt Ion: 85 Resp: 176  
 Ion Ratio Lower Upper  
 85 100  
 87 0.0 16.0 48.0#



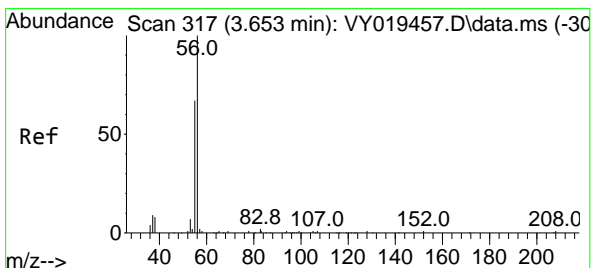
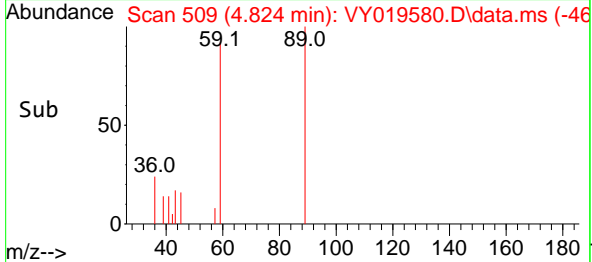
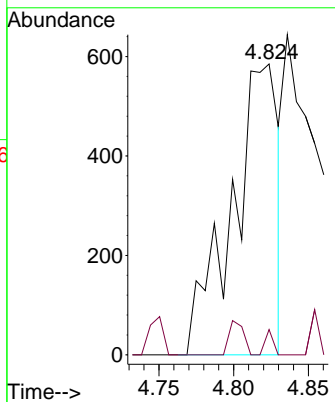


#11  
 Tert butyl alcohol  
 Concen: 6.757 ug/l  
 RT: 4.824 min Scan# 509  
 Delta R.T. -0.036 min  
 Lab File: VY019580.D  
 Acq: 17 Sep 2024 13:04

Instrument : MSVOA\_Y  
 ClientSampleId :

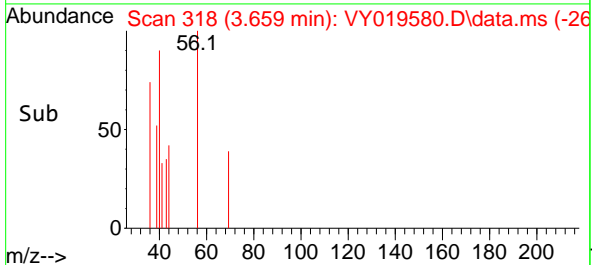
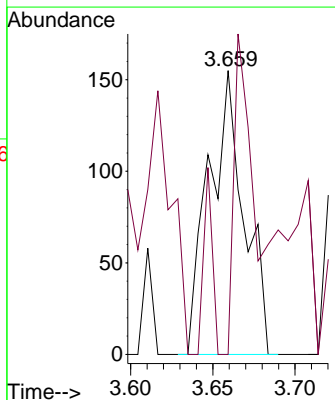
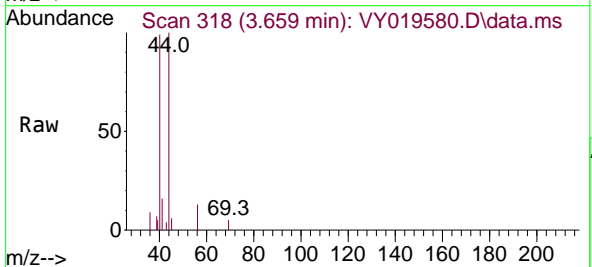


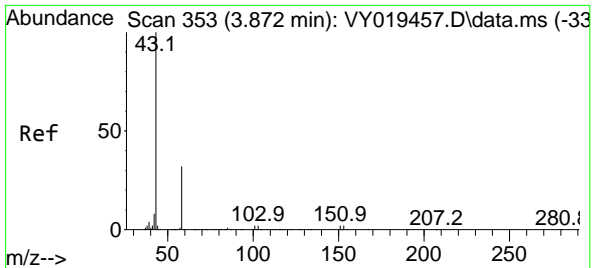
Tgt Ion: 59 Resp: 1252  
 Ion Ratio Lower Upper  
 59 100  
 57 1.5 3.0 4.6#



#13  
 Acrolein  
 Concen: Below Cal  
 RT: 3.659 min Scan# 318  
 Delta R.T. 0.006 min  
 Lab File: VY019580.D  
 Acq: 17 Sep 2024 13:04

Tgt Ion: 56 Resp: 231  
 Ion Ratio Lower Upper  
 56 100  
 55 64.9 55.7 83.5

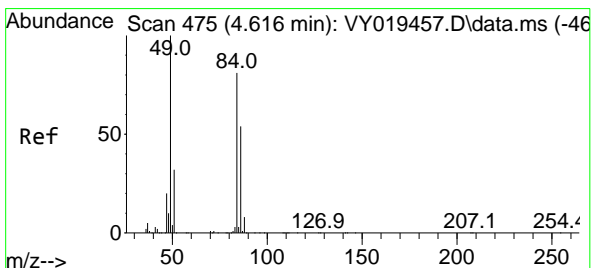
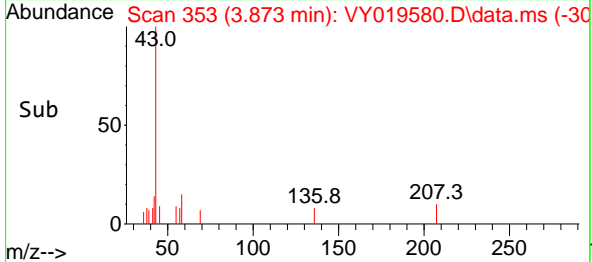
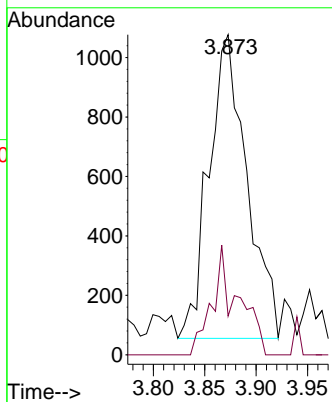
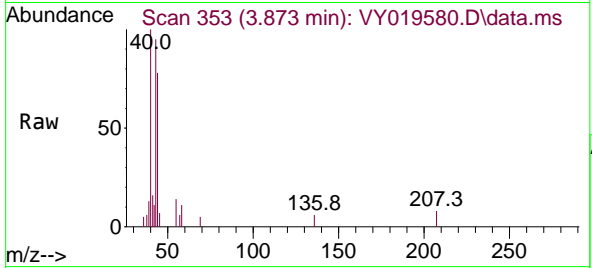




#16  
 Acetone  
 Concen: 4.808 ug/l  
 RT: 3.873 min Scan# 31  
 Delta R.T. 0.000 min  
 Lab File: VY019580.D  
 Acq: 17 Sep 2024 13:04

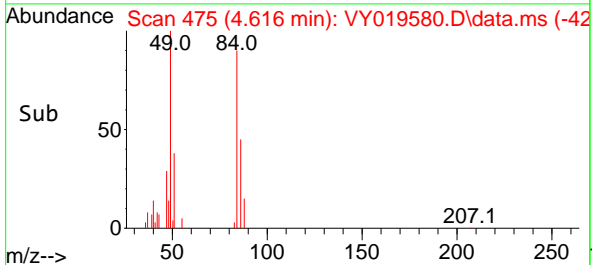
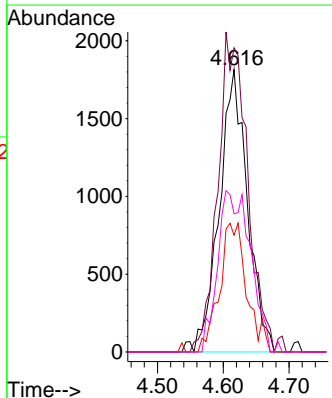
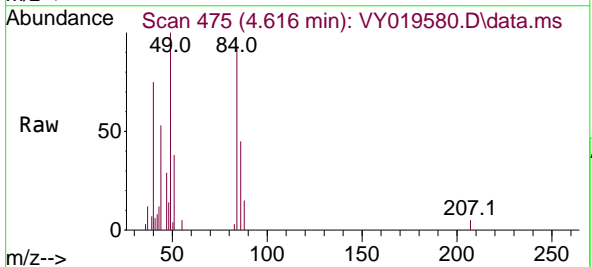
Instrument :  
 MSVOA\_Y  
 ClientSampleId :

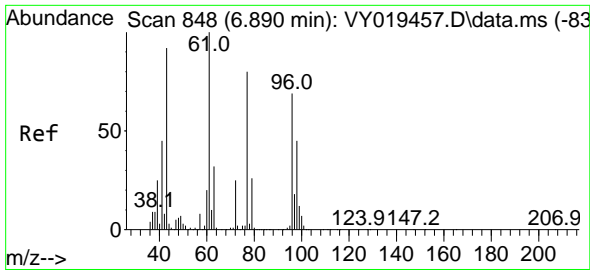
Tgt Ion: 43 Resp: 2628  
 Ion Ratio Lower Upper  
 43 100  
 58 12.7 31.7 47.5#



#20  
 Methylene Chloride  
 Concen: 2.170 ug/l  
 RT: 4.616 min Scan# 475  
 Delta R.T. 0.000 min  
 Lab File: VY019580.D  
 Acq: 17 Sep 2024 13:04

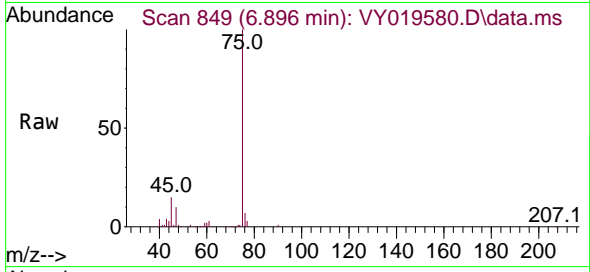
Tgt Ion: 84 Resp: 5408  
 Ion Ratio Lower Upper  
 84 100  
 49 107.7 84.4 126.6  
 51 41.4 26.0 39.0#  
 86 49.0 49.5 74.3#



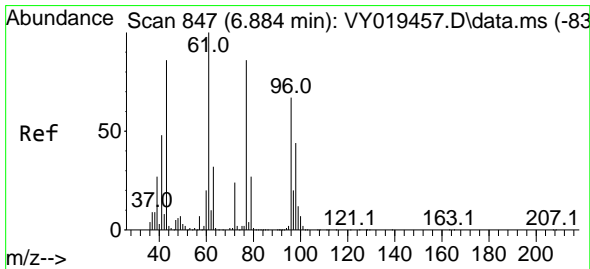
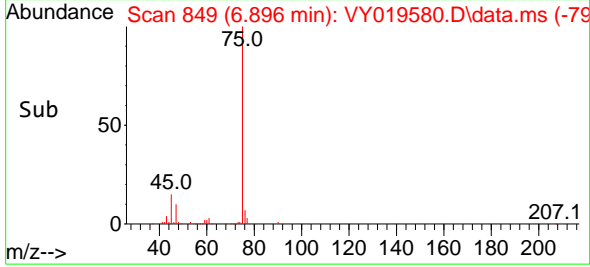
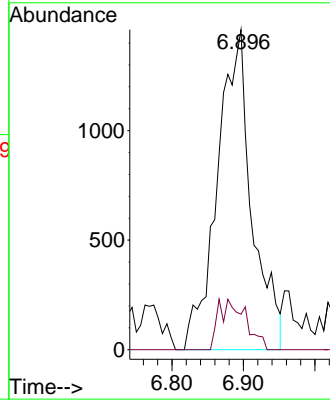


#25  
 2-Butanone  
 Concen: 6.294 ug/l  
 RT: 6.896 min Scan# 848  
 Delta R.T. 0.006 min  
 Lab File: VY019580.D  
 Acq: 17 Sep 2024 13:04

Instrument :  
 MSVOA\_Y  
 ClientSampleId :

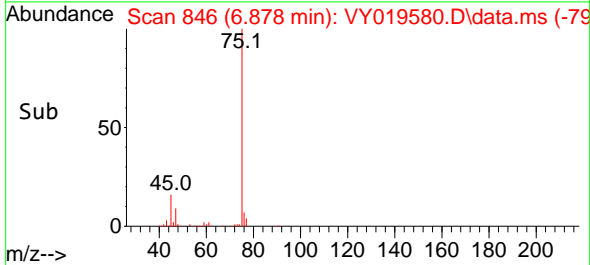
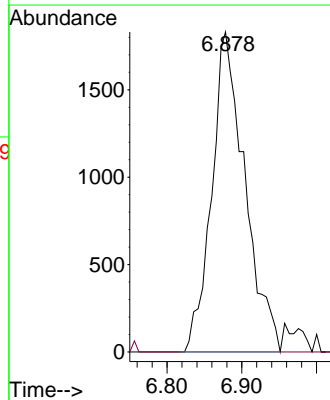
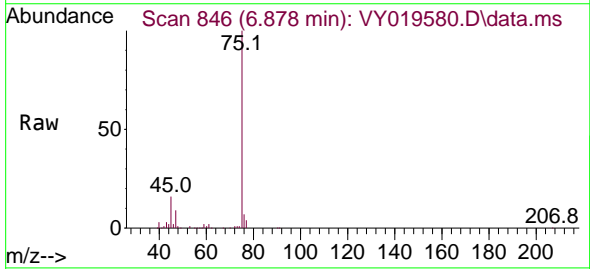


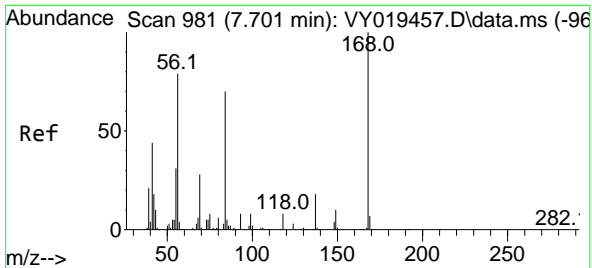
Tgt Ion: 43 Resp: 4893  
 Ion Ratio Lower Upper  
 43 100  
 72 11.1 27.3 40.9#



#26  
 2,2-Dichloropropane  
 Concen: 1.373 ug/l  
 RT: 6.878 min Scan# 846  
 Delta R.T. -0.006 min  
 Lab File: VY019580.D  
 Acq: 17 Sep 2024 13:04

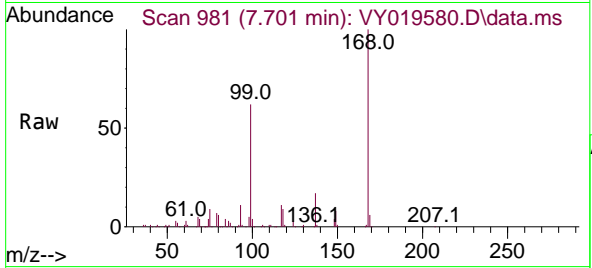
Tgt Ion: 77 Resp: 5626  
 Ion Ratio Lower Upper  
 77 100  
 97 0.0 12.0 36.1#





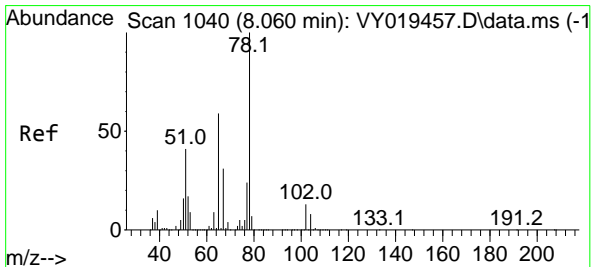
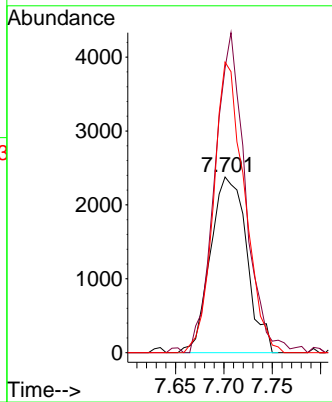
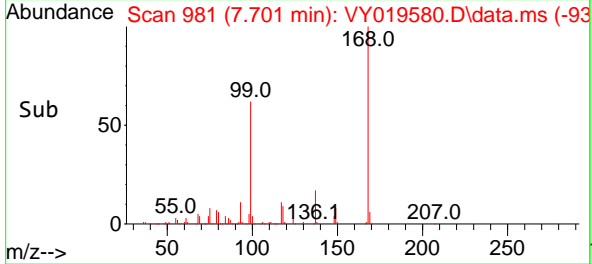
#31  
 Cyclohexane  
 Concen: 1.509 ug/l  
 RT: 7.701 min Scan# 981  
 Delta R.T. 0.000 min  
 Lab File: VY019580.D  
 Acq: 17 Sep 2024 13:04

Instrument :  
 MSVOA\_Y  
 ClientSampleId :

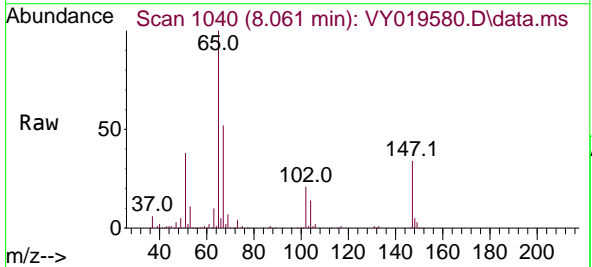


Tgt Ion: 56 Resp: 6196

Ion	Ratio	Lower	Upper
56	100		
69	159.4	28.7	43.1#
84	165.4	77.7	116.5#

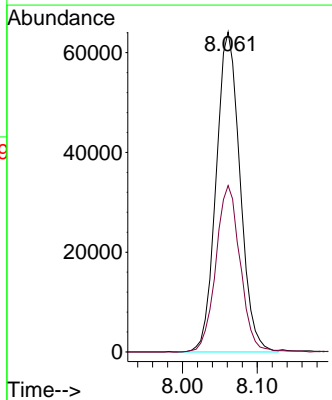
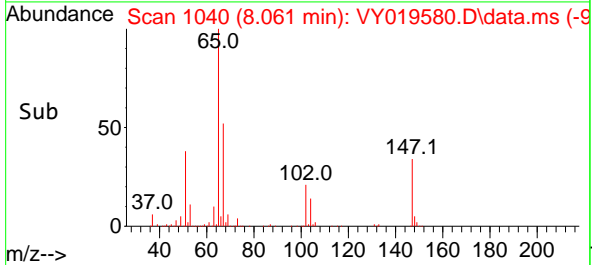


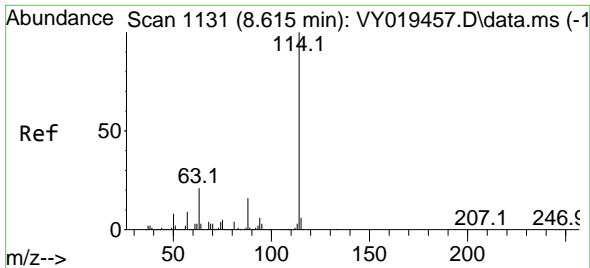
#33  
 1,2-Dichloroethane-d4  
 Concen: 62.051 ug/l  
 RT: 8.061 min Scan# 1040  
 Delta R.T. 0.000 min  
 Lab File: VY019580.D  
 Acq: 17 Sep 2024 13:04



Tgt Ion: 65 Resp: 142364

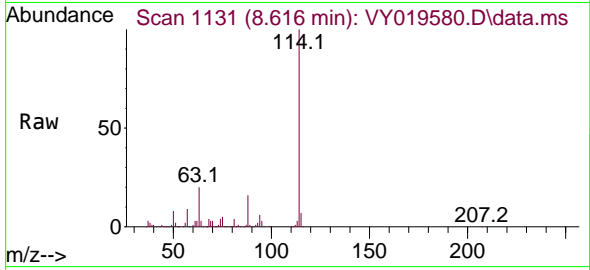
Ion	Ratio	Lower	Upper
65	100		
67	53.1	0.0	109.6



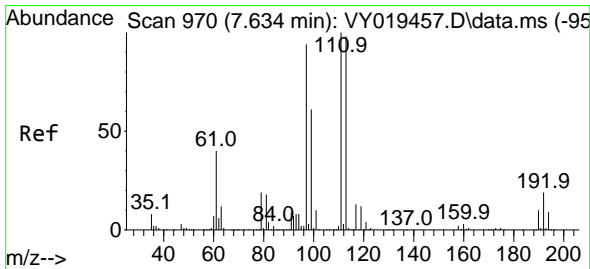
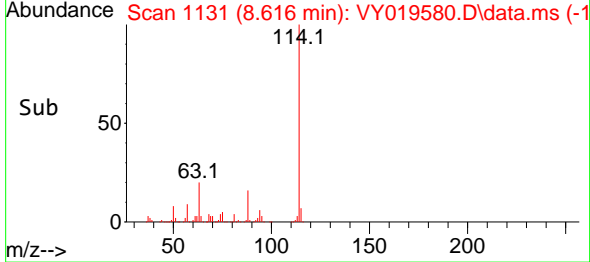
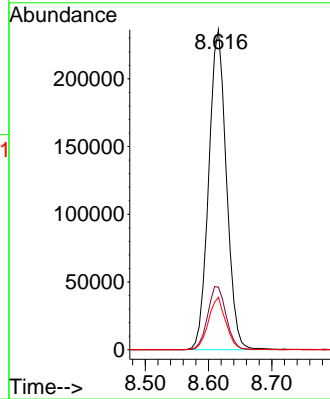


#34  
 1,4-Difluorobenzene  
 Concen: 50.000 ug/l  
 RT: 8.616 min Scan# 1131  
 Delta R.T. 0.000 min  
 Lab File: VY019580.D  
 Acq: 17 Sep 2024 13:04

Instrument :  
 MSVOA\_Y  
 ClientSampleId :

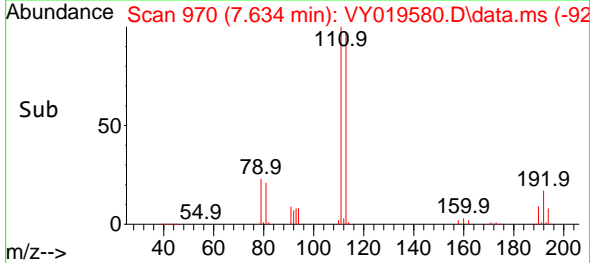
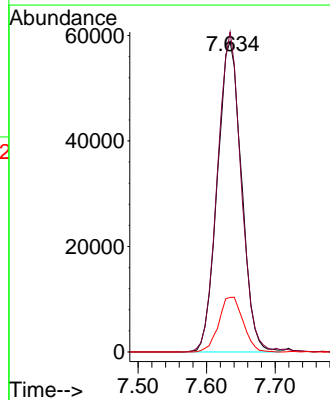
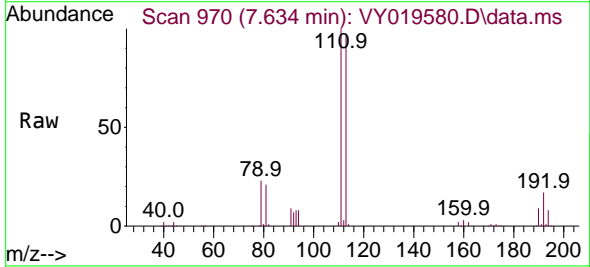


Tgt Ion:114 Resp: 459219  
 Ion Ratio Lower Upper  
 114 100  
 63 19.6 0.0 35.0  
 88 16.4 0.0 27.2

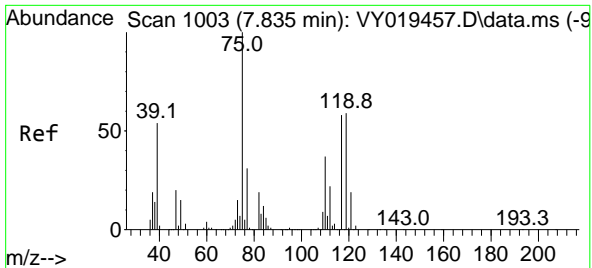


#35  
 Dibromofluoromethane  
 Concen: 55.295 ug/l  
 RT: 7.634 min Scan# 970  
 Delta R.T. 0.000 min  
 Lab File: VY019580.D  
 Acq: 17 Sep 2024 13:04

Tgt Ion:113 Resp: 143970  
 Ion Ratio Lower Upper  
 113 100  
 111 100.7 82.2 123.4  
 192 17.8 15.9 23.9

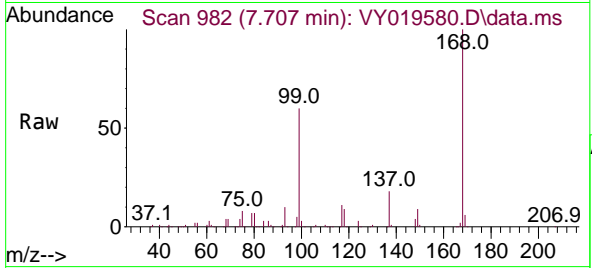




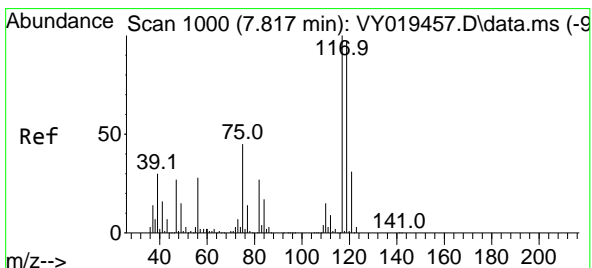
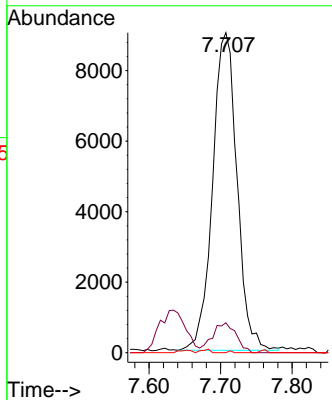
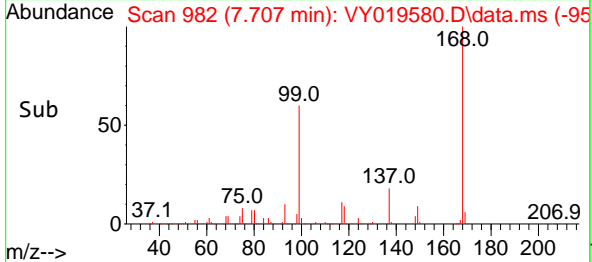


#36  
 1,1-Dichloropropene  
 Concen: 6.020 ug/l  
 RT: 7.707 min Scan# 91  
 Delta R.T. -0.128 min  
 Lab File: VY019580.D  
 Acq: 17 Sep 2024 13:04

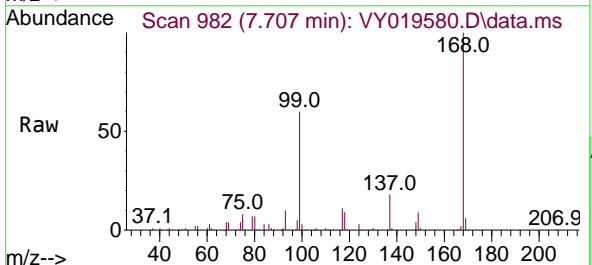
Instrument : MSVOA\_Y  
 ClientSampleId :



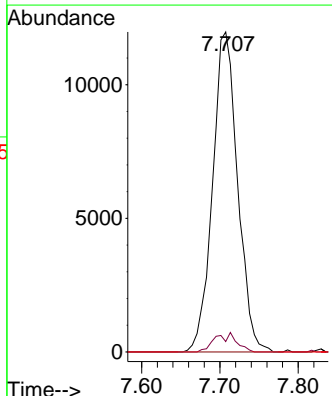
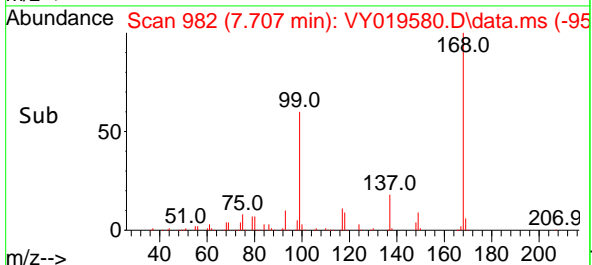
Tgt Ion: 75 Resp: 21329  
 Ion Ratio Lower Upper  
 75 100  
 110 9.1 19.0 57.0#  
 77 0.1 25.3 37.9#

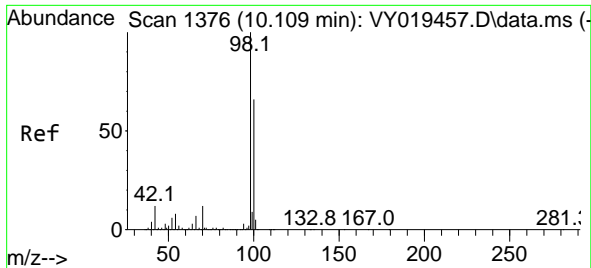


#38  
 Carbon Tetrachloride  
 Concen: 6.667 ug/l  
 RT: 7.707 min Scan# 982  
 Delta R.T. -0.109 min  
 Lab File: VY019580.D  
 Acq: 17 Sep 2024 13:04



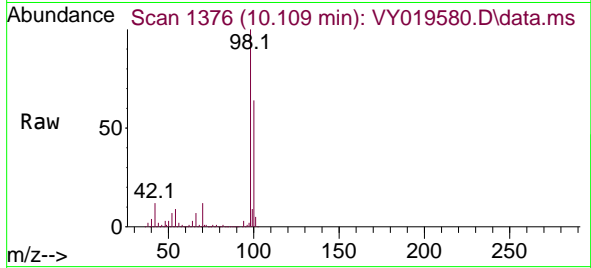
Tgt Ion: 117 Resp: 26636  
 Ion Ratio Lower Upper  
 117 100  
 119 3.3 75.8 113.6#  
 121 0.0 24.0 36.0#



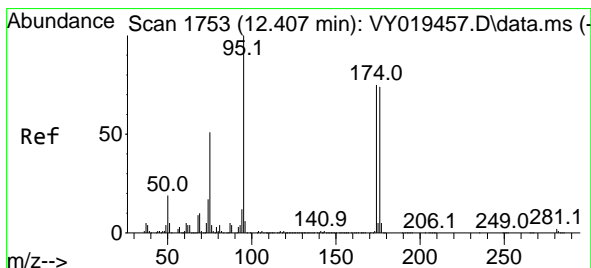
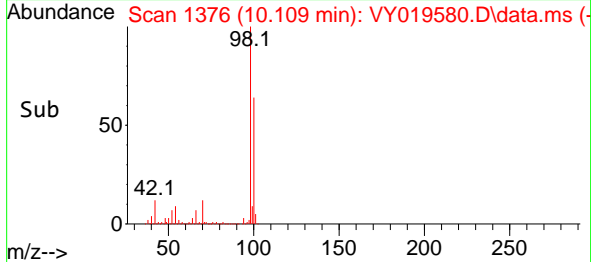
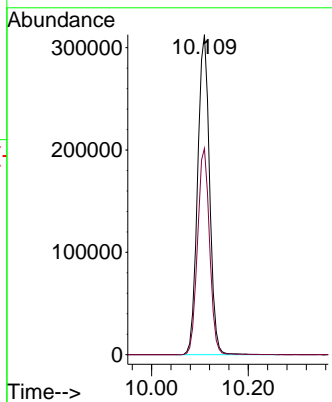


#50  
 Toluene-d8  
 Concen: 55.530 ug/l  
 RT: 10.109 min Scan# 11  
 Delta R.T. 0.000 min  
 Lab File: VY019580.D  
 Acq: 17 Sep 2024 13:04

Instrument :  
 MSVOA\_Y  
 ClientSampleId :

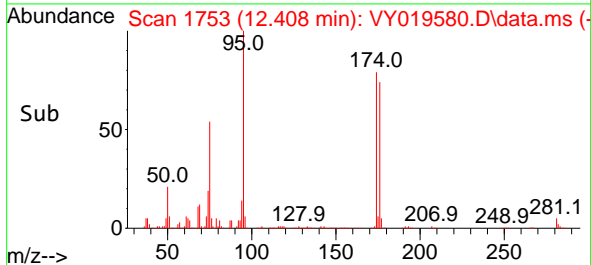
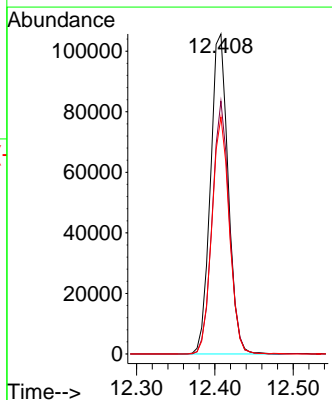
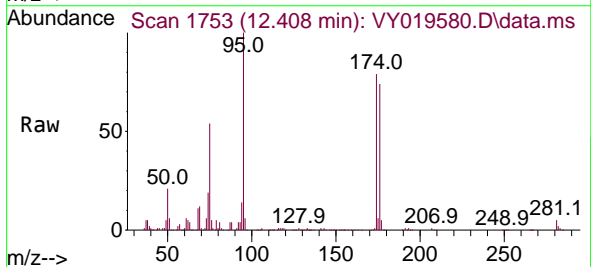


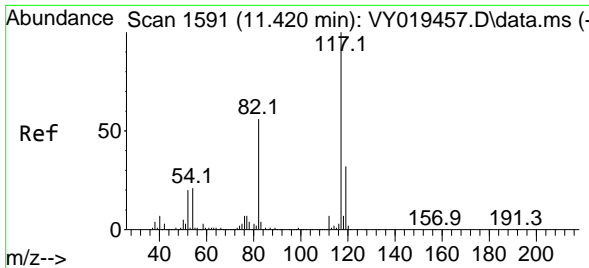
Tgt Ion: 98 Resp: 534776  
 Ion Ratio Lower Upper  
 98 100  
 100 64.7 52.0 78.0



#62  
 4-Bromofluorobenzene  
 Concen: 44.836 ug/l  
 RT: 12.408 min Scan# 1753  
 Delta R.T. 0.000 min  
 Lab File: VY019580.D  
 Acq: 17 Sep 2024 13:04

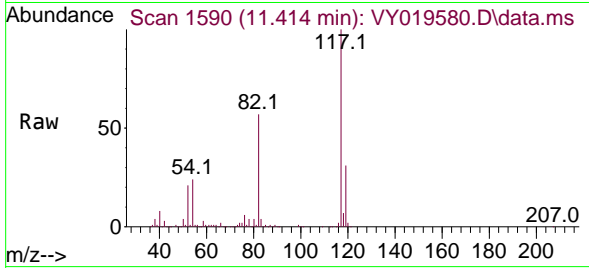
Tgt Ion: 95 Resp: 166028  
 Ion Ratio Lower Upper  
 95 100  
 174 75.9 0.0 175.6  
 176 72.9 0.0 171.4





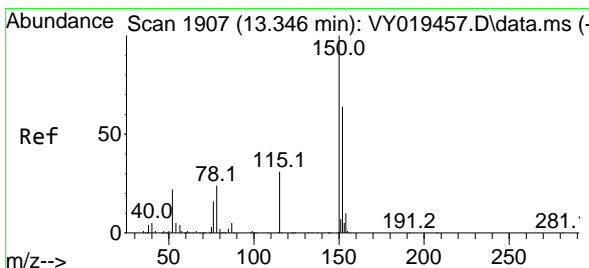
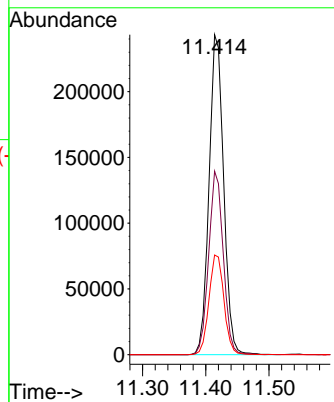
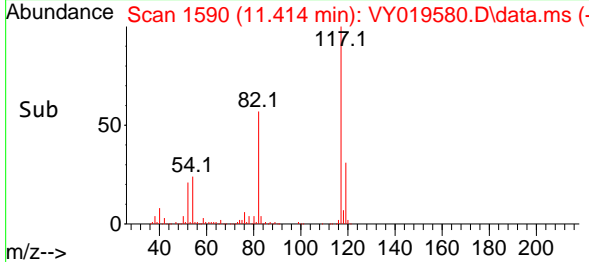
#63  
 Chlorobenzene-d5  
 Concen: 50.000 ug/l  
 RT: 11.414 min Scan# 11  
 Delta R.T. -0.006 min  
 Lab File: VY019580.D  
 Acq: 17 Sep 2024 13:04

Instrument :  
 MSVOA\_Y  
 ClientSampleId :

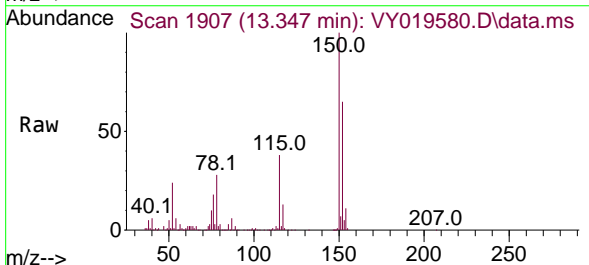


Tgt Ion:117 Resp: 390477

Ion	Ratio	Lower	Upper
117	100		
82	57.3	42.4	63.6
119	31.1	25.9	38.9

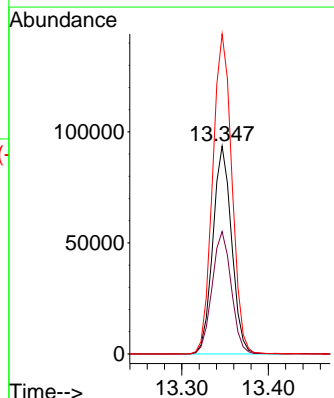
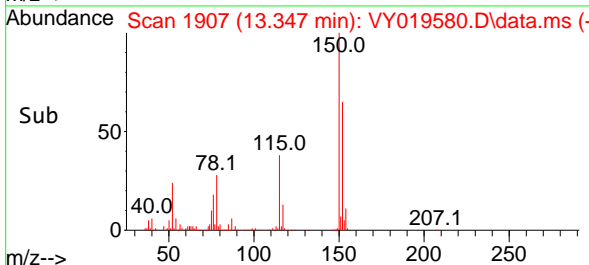


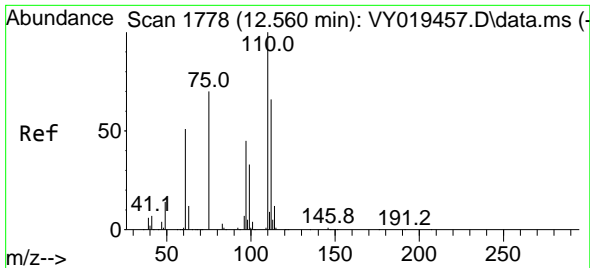
#72  
 1,4-Dichlorobenzene-d4  
 Concen: 50.000 ug/l  
 RT: 13.347 min Scan# 1907  
 Delta R.T. 0.000 min  
 Lab File: VY019580.D  
 Acq: 17 Sep 2024 13:04



Tgt Ion:152 Resp: 140644

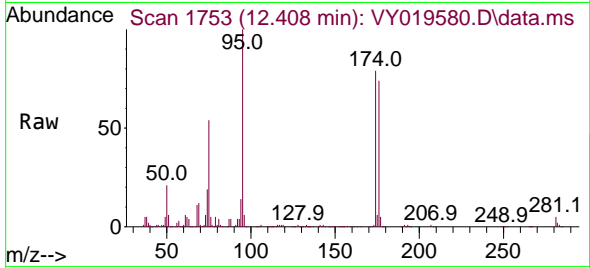
Ion	Ratio	Lower	Upper
152	100		
115	60.4	28.2	84.7
150	157.9	0.0	345.6



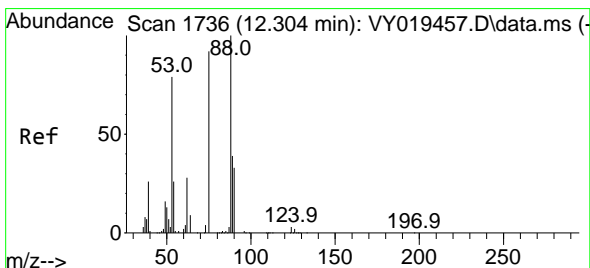
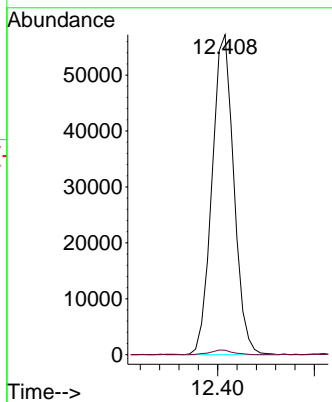
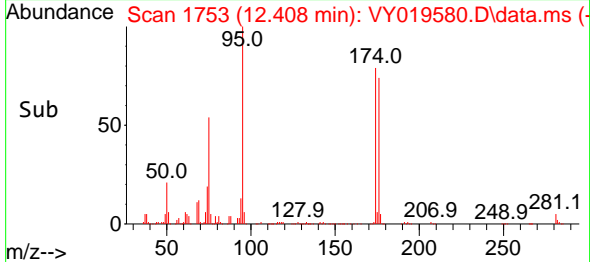


#76  
 1,2,3-Trichloropropane  
 Concen: 67.911 ug/l  
 RT: 12.408 min Scan# 1753  
 Delta R.T. -0.152 min  
 Lab File: VY019580.D  
 Acq: 17 Sep 2024 13:04

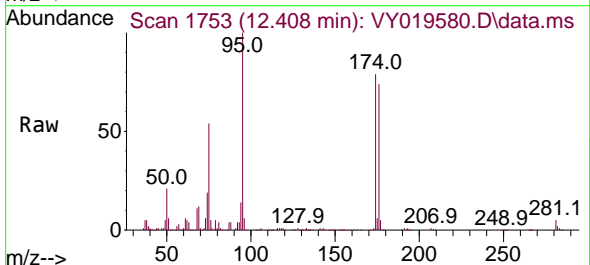
Instrument : MSVOA\_Y  
 ClientSampleId :



Tgt Ion: 75 Resp: 89523  
 Ion Ratio Lower Upper  
 75 100  
 77 1.5 0.0 0.0#



#81  
 trans-1,4-Dichloro-2-butene  
 Concen: 130.369 ug/l  
 RT: 12.408 min Scan# 1753  
 Delta R.T. 0.104 min  
 Lab File: VY019580.D  
 Acq: 17 Sep 2024 13:04



Tgt Ion: 75 Resp: 89523  
 Ion Ratio Lower Upper  
 75 100  
 53 0.1 66.8 100.2#  
 89 0.1 35.8 53.6#

