

Data Path : Z:\voasrv\HPCHEM1\MSVOA_Y\Data\VY091724\
 Data File : VY019586.D
 Acq On : 17 Sep 2024 15:25
 Operator : SY/MD
 Sample : P4015-05
 Misc : 4.99g/5.0mL/MSVOA_Y/SOIL/A
 ALS Vial : 14 Sample Multiplier: 1

Instrument :
 MSVOA_Y
 ClientSampleId :

Quant Time: Sep 18 01:33:15 2024
 Quant Method : Z:\voasrv\HPCHEM1\MSVOA_Y\methods\82Y090924S.M
 Quant Title : SW846 8260
 QLast Update : Mon Sep 09 16:00:30 2024
 Response via : Initial Calibration

Compound	R.T.	QIon	Response	Conc	Units	Dev(Min)

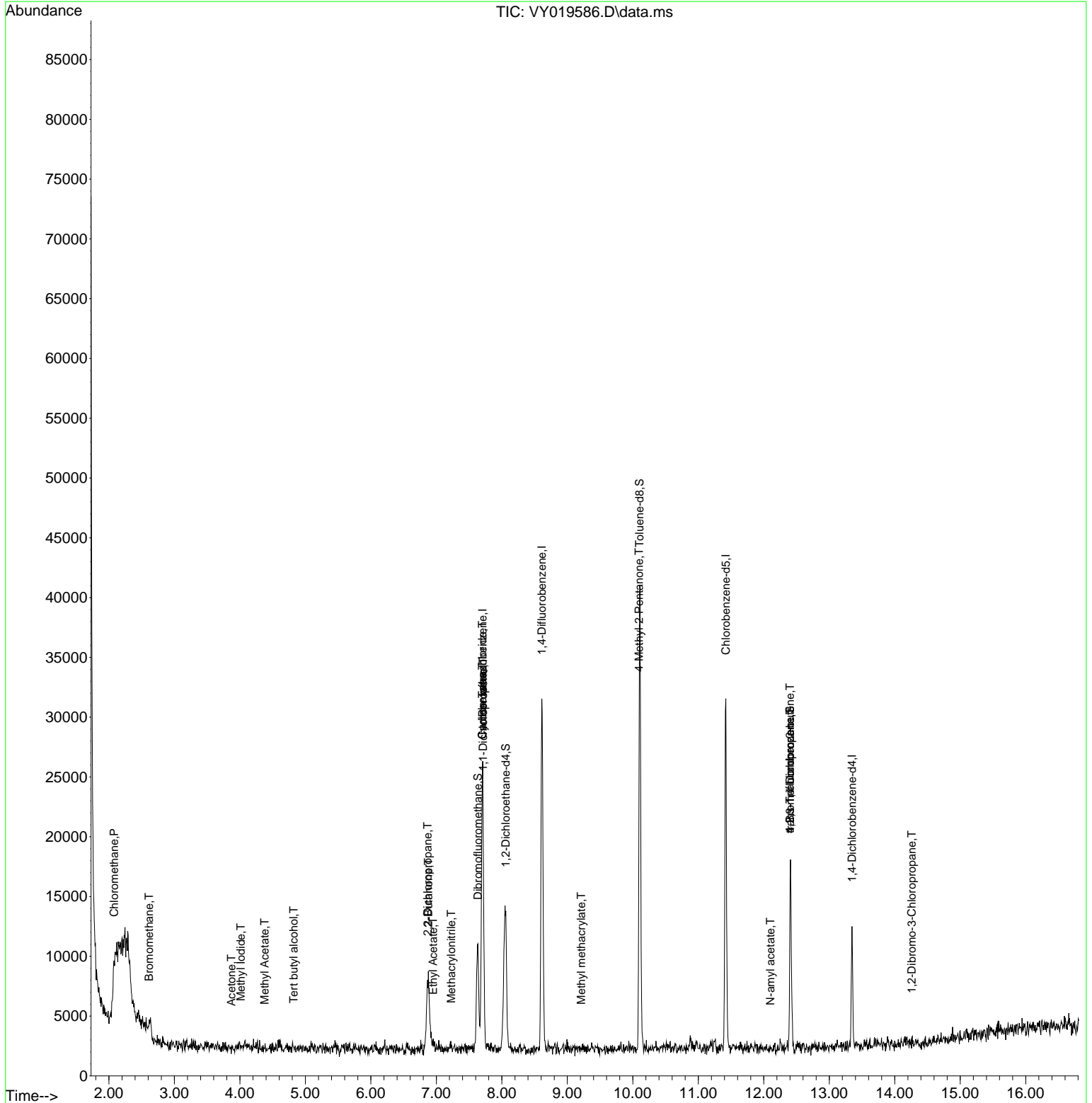
Internal Standards						
1) Pentafluorobenzene	7.707	168	17711	50.000	ug/l	# 0.00
34) 1,4-Difluorobenzene	8.610	114	25194	50.000	ug/l	0.00
63) Chlorobenzene-d5	11.420	117	15157	50.000	ug/l	0.00
72) 1,4-Dichlorobenzene-d4	13.347	152	2278	50.000	ug/l	0.00
System Monitoring Compounds						
33) 1,2-Dichloroethane-d4	8.061	65	6627	40.409	ug/l	0.00
Spiked Amount	50.000	Range 50 - 163	Recovery =	80.820%		
35) Dibromofluoromethane	7.634	113	6627	46.393	ug/l	0.00
Spiked Amount	50.000	Range 54 - 147	Recovery =	92.780%		
50) Toluene-d8	10.103	98	25926	49.070	ug/l	0.00
Spiked Amount	50.000	Range 58 - 134	Recovery =	98.140%		
62) 4-Bromofluorobenzene	12.402	95	4742	23.342	ug/l	0.00
Spiked Amount	50.000	Range 29 - 146	Recovery =	46.680%		
Target Compounds						
						Qvalue
2) Dichlorodifluoromethane	2.117	85	54	Below Cal	#	43
3) Chloromethane	2.080	50	296	2.020	ug/l #	43
5) Bromomethane	2.611	94	179	1.839	ug/l #	52
10) Methyl Iodide	4.013	142	213	1.017	ug/l #	89
11) Tert butyl alcohol	4.824	59	154	11.628	ug/l #	50
13) Acrolein	3.647	56	44	Below Cal	#	82
16) Acetone	3.873	43	667	17.072	ug/l #	72
18) Methyl Acetate	4.379	43	180	1.698	ug/l #	46
25) 2-Butanone	6.878	43	599	10.780	ug/l #	41
26) 2,2-Dichloropropane	6.866	77	545	1.861	ug/l #	51
31) Cyclohexane	7.701	56	611	2.082	ug/l #	18
36) 1,1-Dichloropropene	7.713	75	1472	7.573	ug/l #	42
37) Ethyl Acetate	6.951	43	102	1.024	ug/l #	67
38) Carbon Tetrachloride	7.701	117	2103	9.594	ug/l #	13
41) Methacrylonitrile	7.226	41	243	4.186	ug/l #	18
48) Methyl methacrylate	9.213	41	119	1.204	ug/l #	13
51) 4-Methyl-2-Pentanone	10.097	43	276	2.622	ug/l	95
74) N-amyl acetate	12.103	43	110	2.447	ug/l #	24
76) 1,2,3-Trichloropropane	12.402	75	2621	122.755	ug/l #	100
81) trans-1,4-Dichloro-2-b...	12.402	75	2621	235.654	ug/l #	16
92) 1,2-Dibromo-3-Chloropr...	14.261	75	26	5.318	ug/l #	1

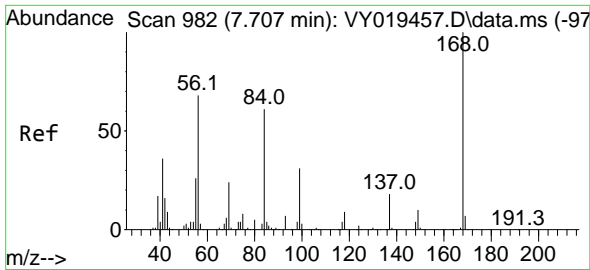
(#) = qualifier out of range (m) = manual integration (+) = signals summed

Data Path : Z:\voasrv\HPCHEM1\MSVOA_Y\Data\VY091724\
 Data File : VY019586.D
 Acq On : 17 Sep 2024 15:25
 Operator : SY/MD
 Sample : P4015-05
 Misc : 4.99g/5.0mL/MSVOA_Y/SOIL/A
 ALS Vial : 14 Sample Multiplier: 1

Instrument :
 MSVOA_Y
 ClientSampleId :

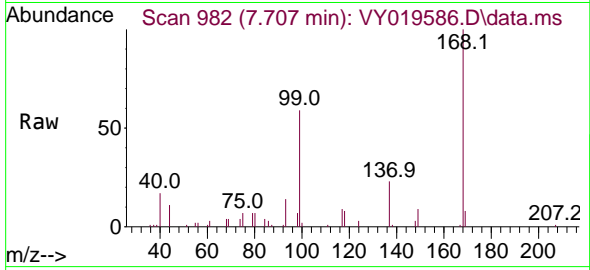
Quant Time: Sep 18 01:33:15 2024
 Quant Method : Z:\voasrv\HPCHEM1\MSVOA_Y\methods\82Y090924S.M
 Quant Title : SW846 8260
 QLast Update : Mon Sep 09 16:00:30 2024
 Response via : Initial Calibration



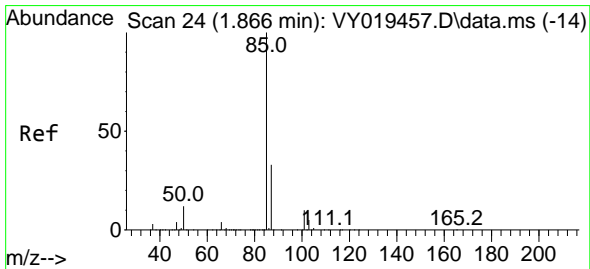
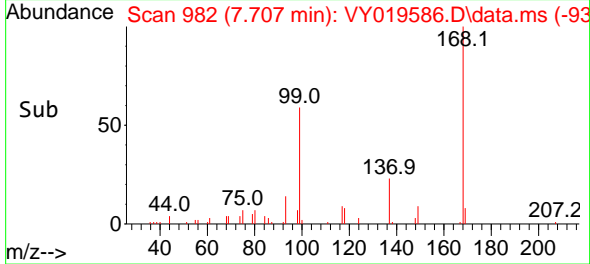
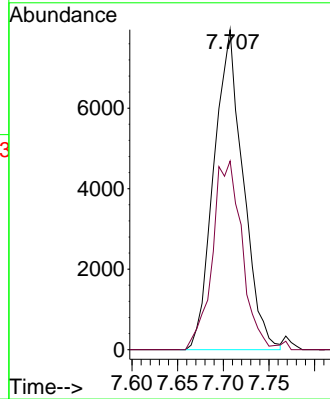


#1
 Pentafluorobenzene
 Concen: 50.000 ug/l
 RT: 7.707 min Scan# 91
 Delta R.T. 0.000 min
 Lab File: VY019586.D
 Acq: 17 Sep 2024 15:25

Instrument :
 MSVOA_Y
 ClientSampleId :

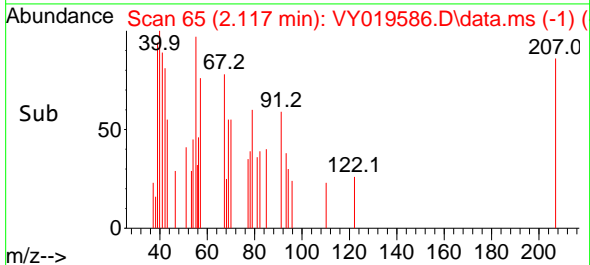
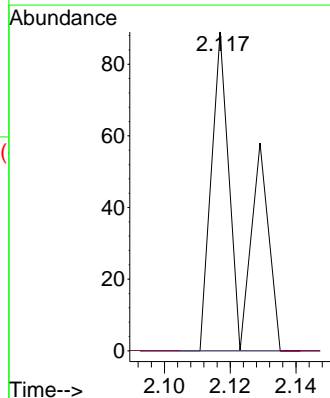
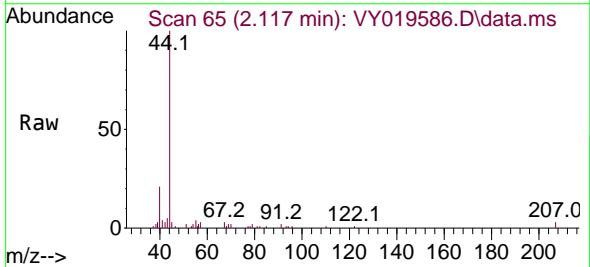


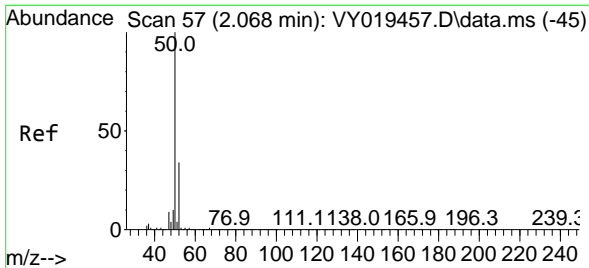
Tgt Ion:168 Resp: 17711
 Ion Ratio Lower Upper
 168 100
 99 59.0 39.1 58.7#



#2
 Dichlorodifluoromethane
 Concen: Below Cal
 RT: 2.117 min Scan# 65
 Delta R.T. 0.251 min
 Lab File: VY019586.D
 Acq: 17 Sep 2024 15:25

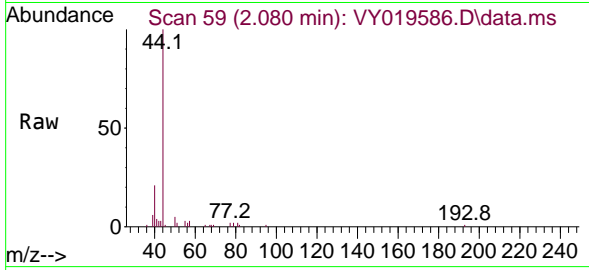
Tgt Ion: 85 Resp: 54
 Ion Ratio Lower Upper
 85 100
 87 0.0 16.0 48.0#



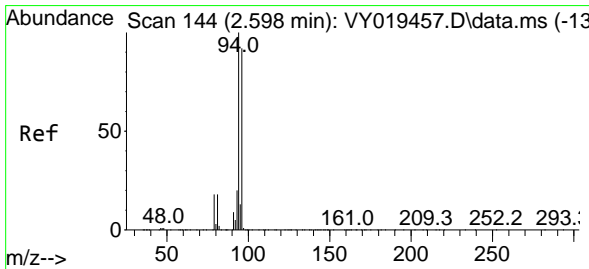
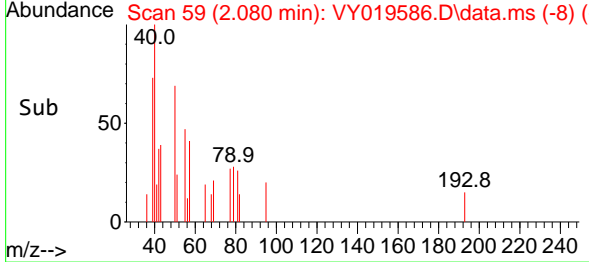
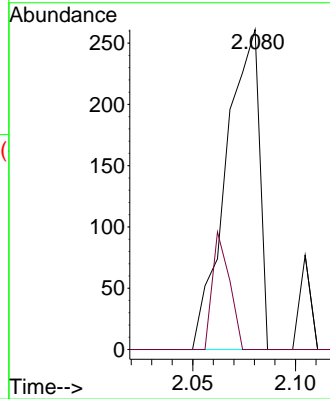


#3
 Chloromethane
 Concen: 2.020 ug/l
 RT: 2.080 min Scan# 51
 Delta R.T. 0.013 min
 Lab File: VY019586.D
 Acq: 17 Sep 2024 15:25

Instrument :
 MSVOA_Y
 ClientSampleId :

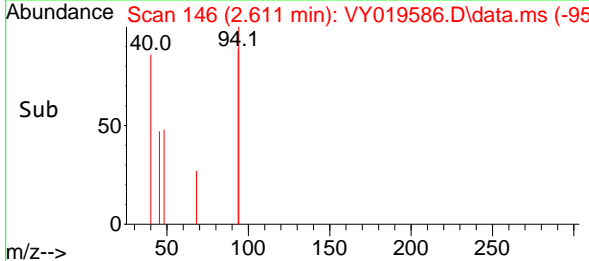
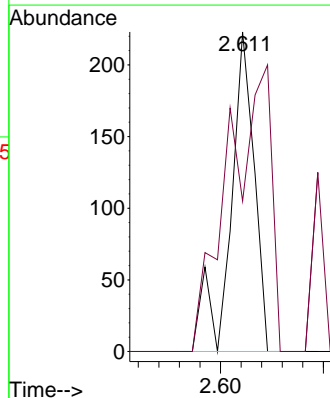
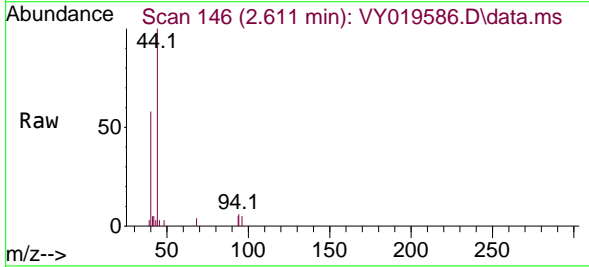


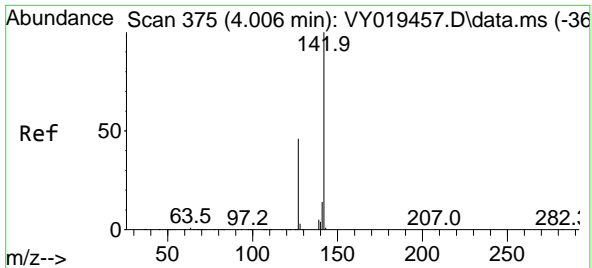
Tgt Ion: 50 Resp: 296
 Ion Ratio Lower Upper
 50 100
 52 0.0 25.6 38.4#



#5
 Bromomethane
 Concen: 1.839 ug/l
 RT: 2.611 min Scan# 146
 Delta R.T. 0.013 min
 Lab File: VY019586.D
 Acq: 17 Sep 2024 15:25

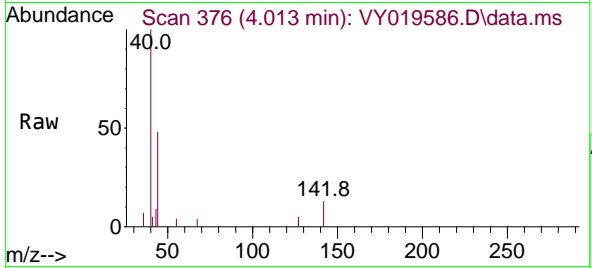
Tgt Ion: 94 Resp: 179
 Ion Ratio Lower Upper
 94 100
 96 47.1 74.1 111.1#



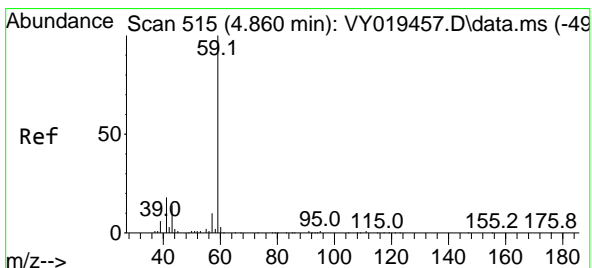
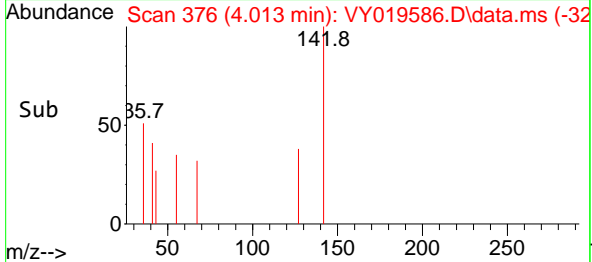
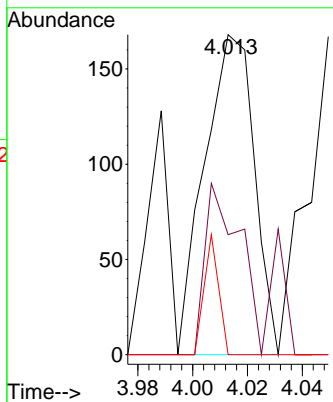


#10
 Methyl Iodide
 Concen: 1.017 ug/l
 RT: 4.013 min Scan# 31
 Delta R.T. 0.007 min
 Lab File: VY019586.D
 Acq: 17 Sep 2024 15:25

Instrument :
 MSVOA_Y
 ClientSampleId :

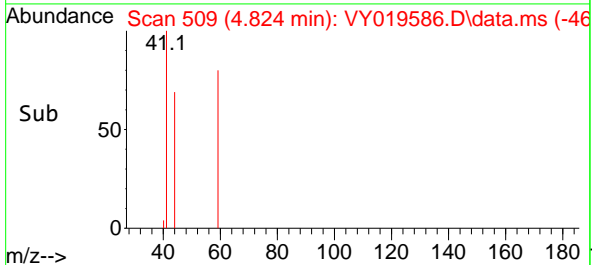
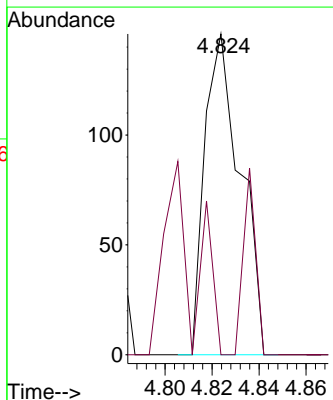
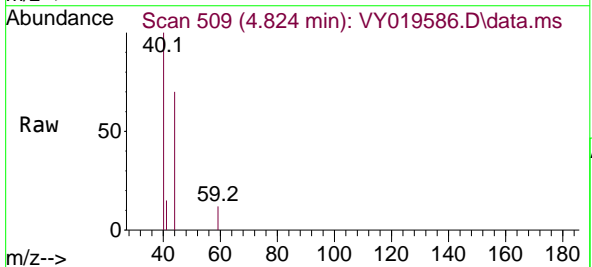


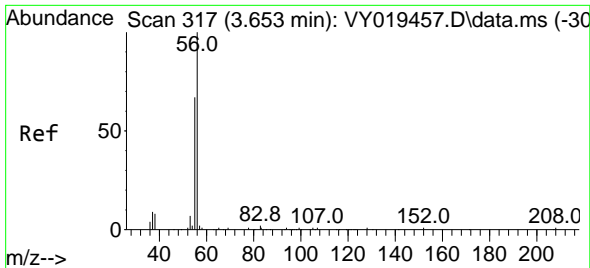
Tgt Ion:142 Resp: 213
 Ion Ratio Lower Upper
 142 100
 127 48.8 32.8 49.2
 141 10.8 11.4 17.2#



#11
 Tert butyl alcohol
 Concen: 11.628 ug/l
 RT: 4.824 min Scan# 509
 Delta R.T. -0.036 min
 Lab File: VY019586.D
 Acq: 17 Sep 2024 15:25

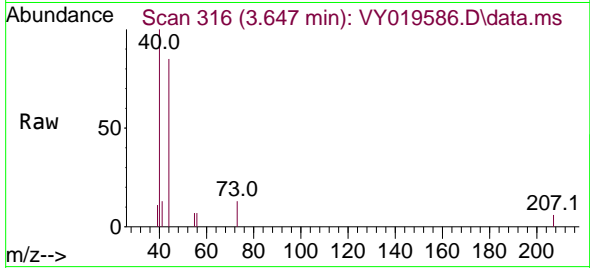
Tgt Ion: 59 Resp: 154
 Ion Ratio Lower Upper
 59 100
 57 20.1 3.0 4.6#



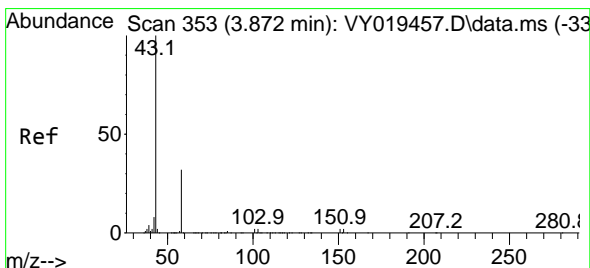
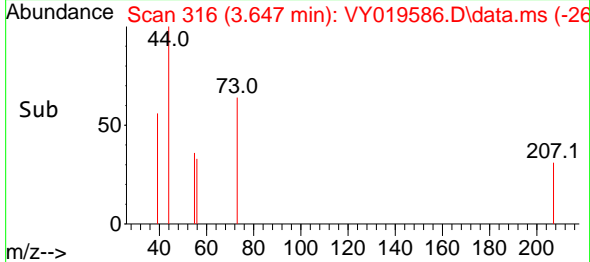
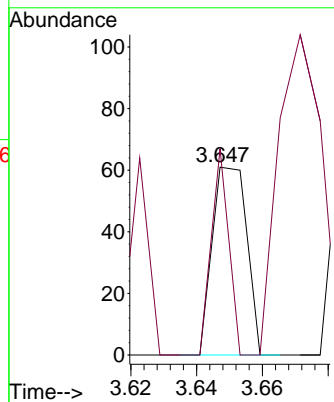


#13
 Acrolein
 Concen: Below Cal
 RT: 3.647 min Scan# 317
 Delta R.T. -0.006 min
 Lab File: VY019586.D
 Acq: 17 Sep 2024 15:25

Instrument :
 MSVOA_Y
 ClientSampleId :

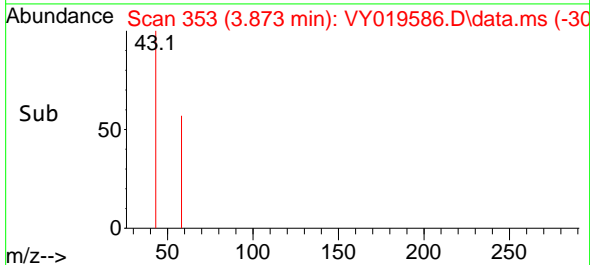
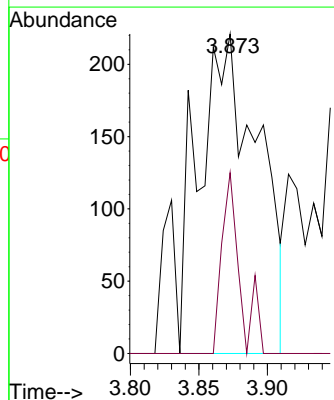
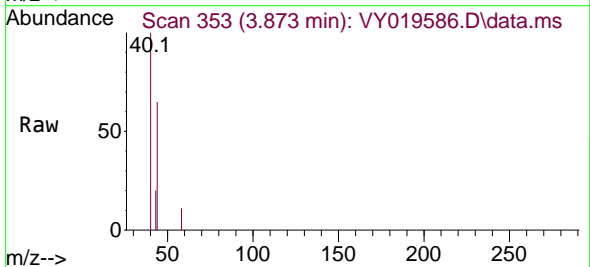


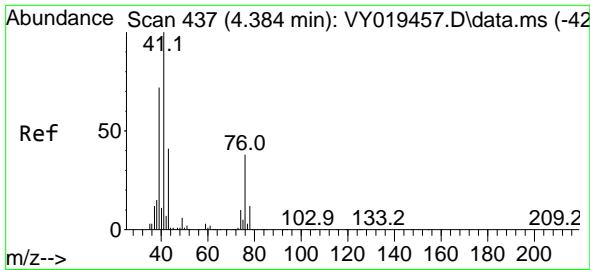
Tgt Ion: 56 Resp: 44
 Ion Ratio Lower Upper
 56 100
 55 54.5 55.7 83.5#



#16
 Acetone
 Concen: 17.072 ug/l
 RT: 3.873 min Scan# 353
 Delta R.T. 0.000 min
 Lab File: VY019586.D
 Acq: 17 Sep 2024 15:25

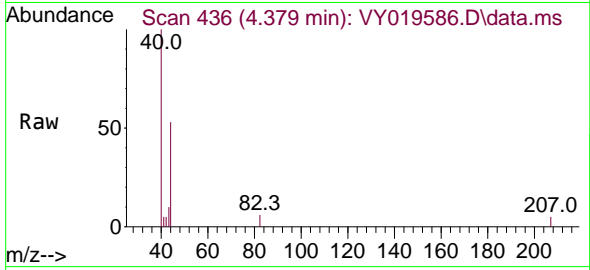
Tgt Ion: 43 Resp: 667
 Ion Ratio Lower Upper
 43 100
 58 56.6 31.7 47.5#



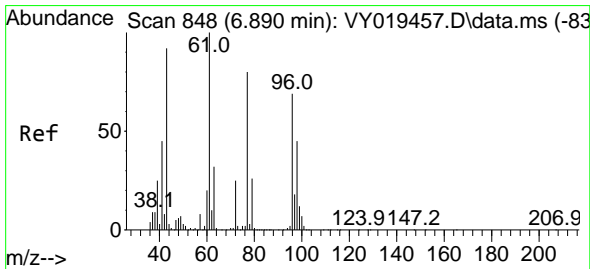
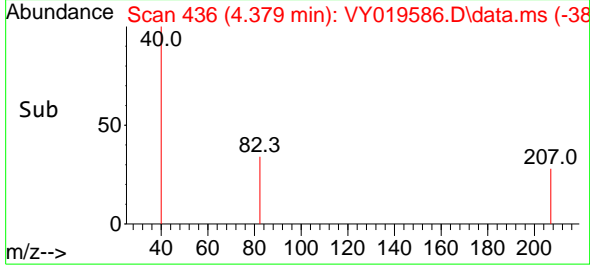
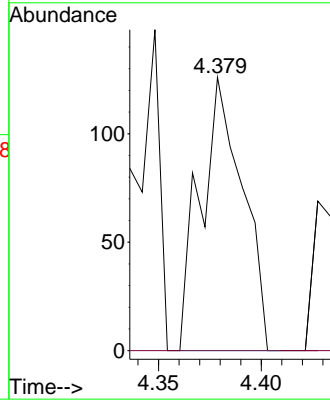


#18
 Methyl Acetate
 Concen: 1.698 ug/l
 RT: 4.379 min Scan# 41
 Delta R.T. -0.006 min
 Lab File: VY019586.D
 Acq: 17 Sep 2024 15:25

Instrument :
 MSVOA_Y
 ClientSampleId :

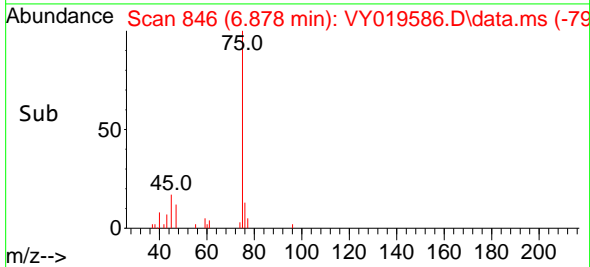
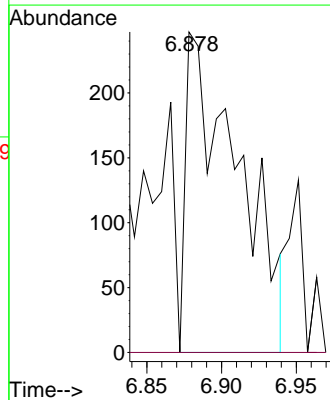
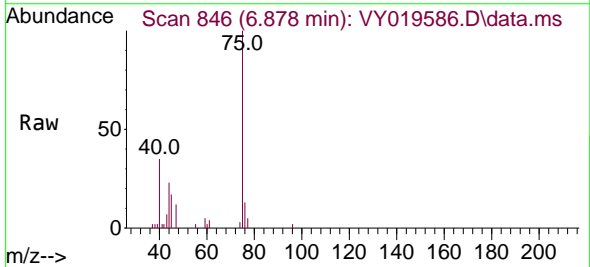


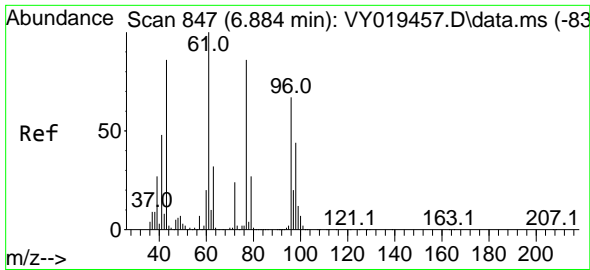
Tgt Ion: 43 Resp: 180
 Ion Ratio Lower Upper
 43 100
 74 0.0 23.3 34.9#



#25
 2-Butanone
 Concen: 10.780 ug/l
 RT: 6.878 min Scan# 846
 Delta R.T. -0.012 min
 Lab File: VY019586.D
 Acq: 17 Sep 2024 15:25

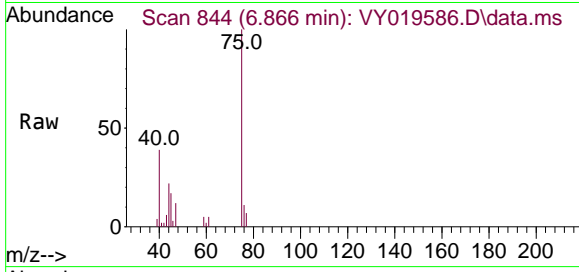
Tgt Ion: 43 Resp: 599
 Ion Ratio Lower Upper
 43 100
 72 0.0 27.3 40.9#



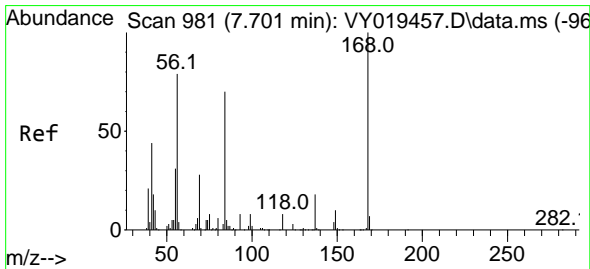
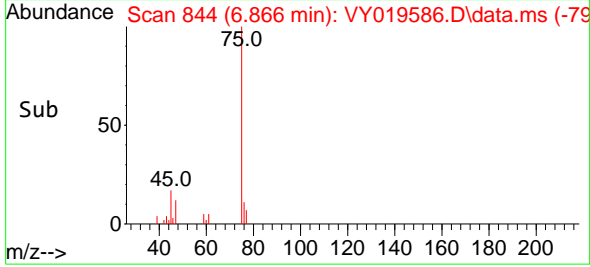
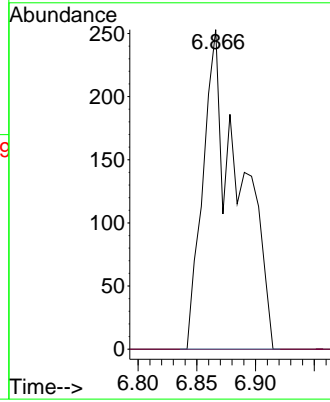


#26
 2,2-Dichloropropane
 Concen: 1.861 ug/l
 RT: 6.866 min Scan# 844
 Delta R.T. -0.018 min
 Lab File: VY019586.D
 Acq: 17 Sep 2024 15:25

Instrument :
 MSVOA_Y
 ClientSampleId :

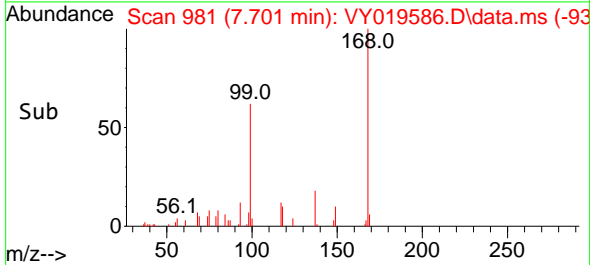
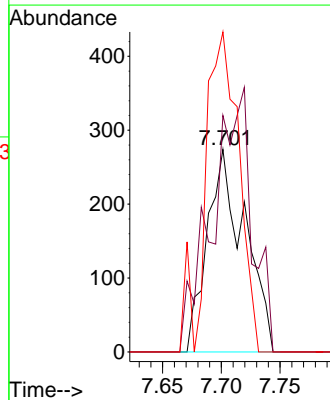
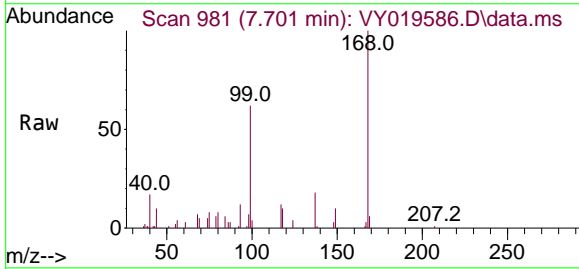


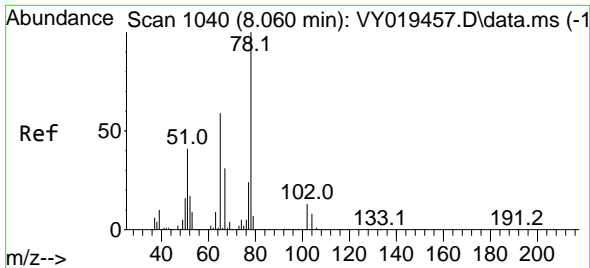
Tgt Ion: 77 Resp: 545
 Ion Ratio Lower Upper
 77 100
 97 0.0 12.0 36.1#



#31
 Cyclohexane
 Concen: 2.082 ug/l
 RT: 7.701 min Scan# 981
 Delta R.T. 0.000 min
 Lab File: VY019586.D
 Acq: 17 Sep 2024 15:25

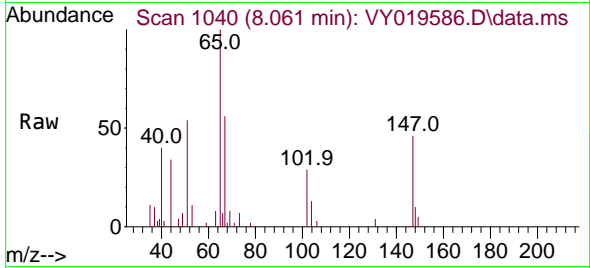
Tgt Ion: 56 Resp: 611
 Ion Ratio Lower Upper
 56 100
 69 116.8 28.7 43.1#
 84 158.0 77.7 116.5#



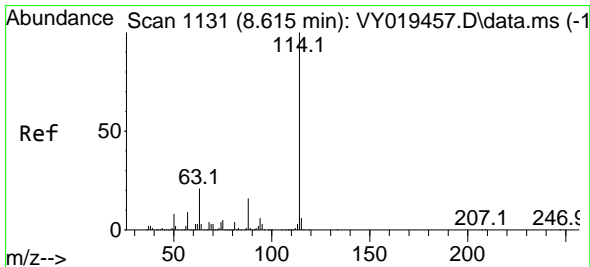
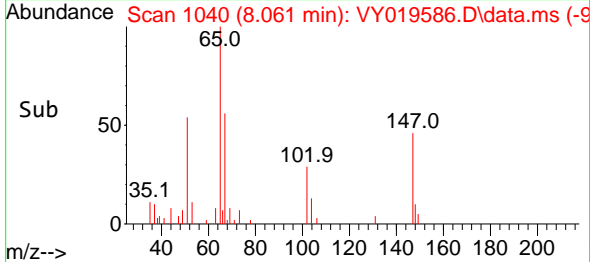
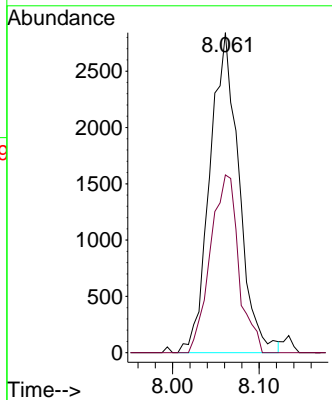


#33
 1,2-Dichloroethane-d4
 Concen: 40.409 ug/l
 RT: 8.061 min Scan# 1100
 Delta R.T. 0.000 min
 Lab File: VY019586.D
 Acq: 17 Sep 2024 15:25

Instrument :
 MSVOA_Y
 ClientSampleId :

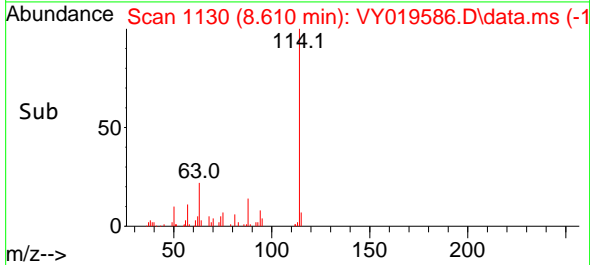
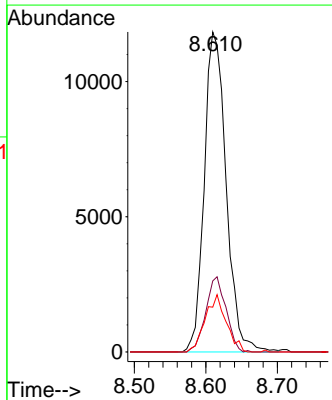
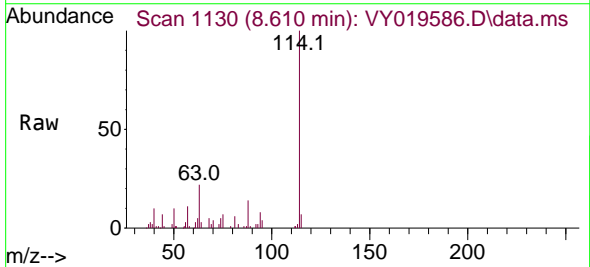


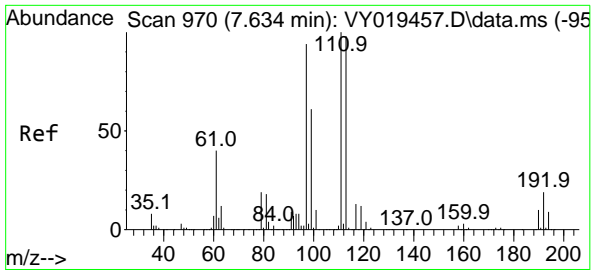
Tgt Ion: 65 Resp: 6627
 Ion Ratio Lower Upper
 65 100
 67 53.8 0.0 109.6



#34
 1,4-Difluorobenzene
 Concen: 50.000 ug/l
 RT: 8.610 min Scan# 1130
 Delta R.T. -0.006 min
 Lab File: VY019586.D
 Acq: 17 Sep 2024 15:25

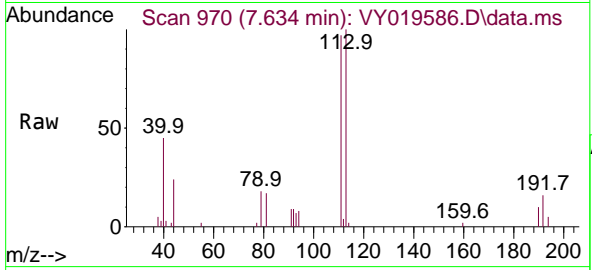
Tgt Ion: 114 Resp: 25194
 Ion Ratio Lower Upper
 114 100
 63 22.2 0.0 35.0
 88 14.0 0.0 27.2



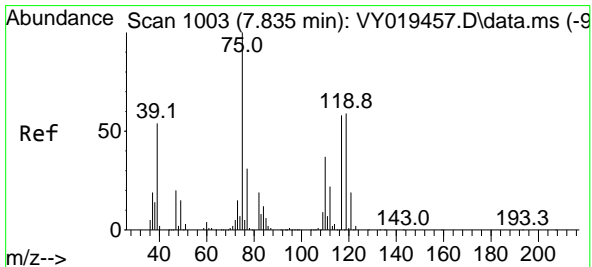
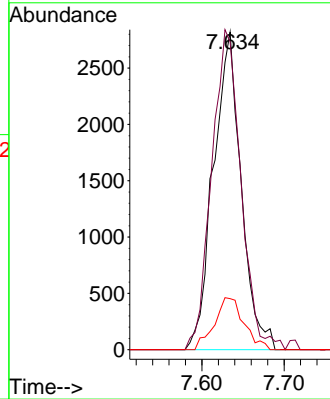
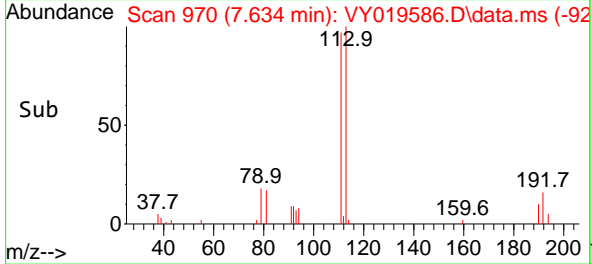


#35
 Dibromofluoromethane
 Concen: 46.393 ug/l
 RT: 7.634 min Scan# 91
 Delta R.T. 0.000 min
 Lab File: VY019586.D
 Acq: 17 Sep 2024 15:25

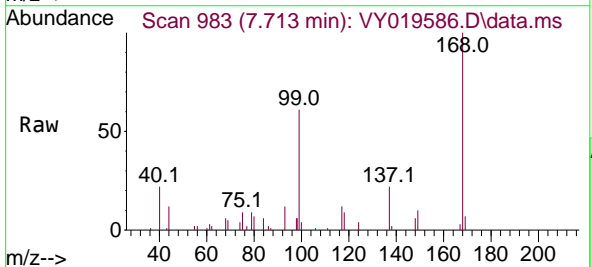
Instrument :
 MSVOA_Y
 ClientSampleId :



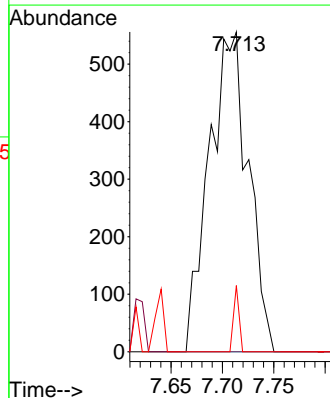
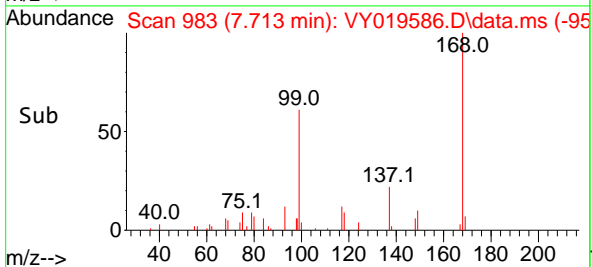
Tgt Ion:113 Resp: 6627
 Ion Ratio Lower Upper
 113 100
 111 105.9 82.2 123.4
 192 17.5 15.9 23.9

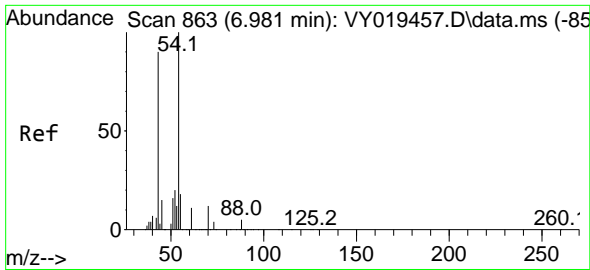


#36
 1,1-Dichloropropene
 Concen: 7.573 ug/l
 RT: 7.713 min Scan# 983
 Delta R.T. -0.121 min
 Lab File: VY019586.D
 Acq: 17 Sep 2024 15:25



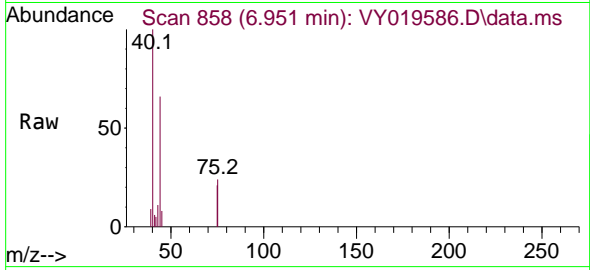
Tgt Ion: 75 Resp: 1472
 Ion Ratio Lower Upper
 75 100
 110 0.0 19.0 57.0#
 77 2.9 25.3 37.9#



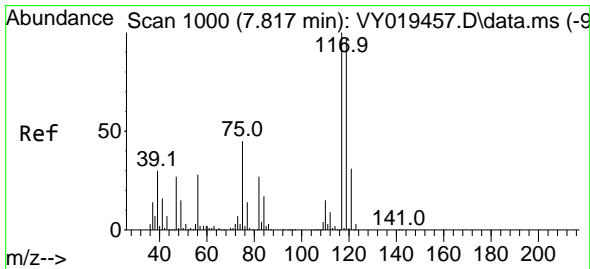
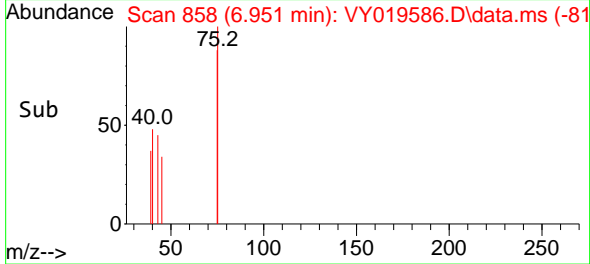
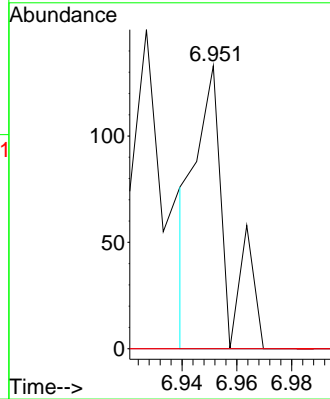


#37
 Ethyl Acetate
 Concen: 1.024 ug/l
 RT: 6.951 min Scan# 810
 Delta R.T. -0.030 min
 Lab File: VY019586.D
 Acq: 17 Sep 2024 15:25

Instrument :
 MSVOA_Y
 ClientSampleId :

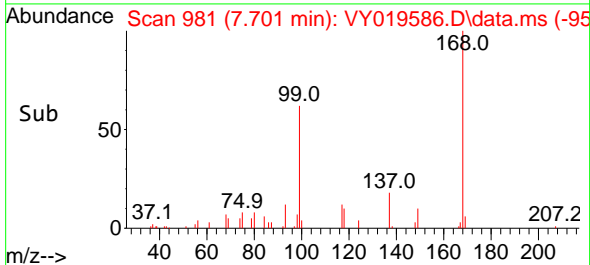
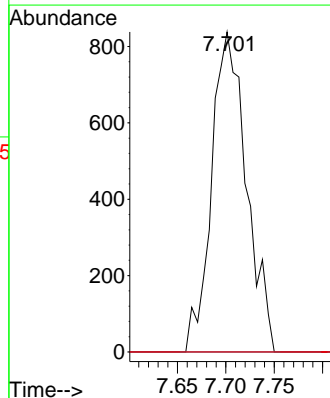
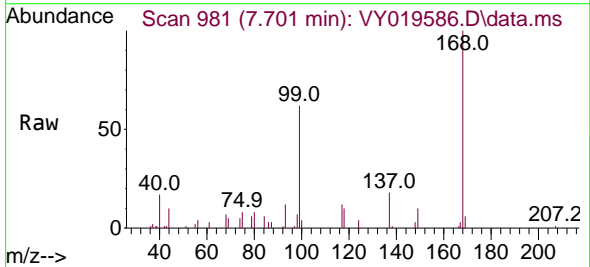


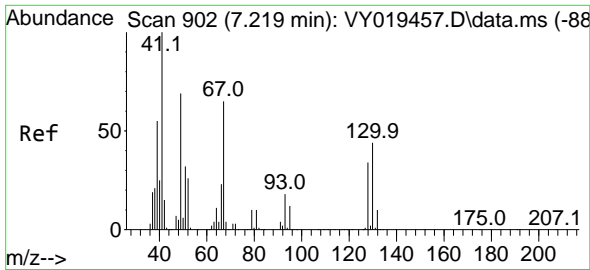
Tgt Ion: 43 Resp: 102
 Ion Ratio Lower Upper
 43 100
 61 0.0 12.6 19.0#
 70 0.0 7.8 11.8#



#38
 Carbon Tetrachloride
 Concen: 9.594 ug/l
 RT: 7.701 min Scan# 981
 Delta R.T. -0.115 min
 Lab File: VY019586.D
 Acq: 17 Sep 2024 15:25

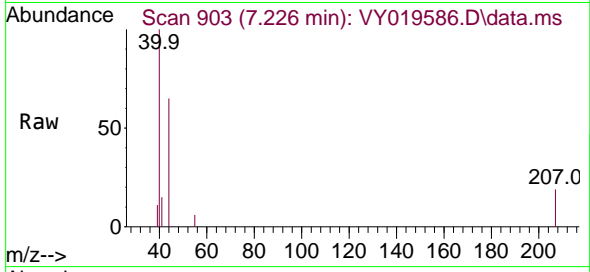
Tgt Ion: 117 Resp: 2103
 Ion Ratio Lower Upper
 117 100
 119 0.0 75.8 113.6#
 121 0.0 24.0 36.0#



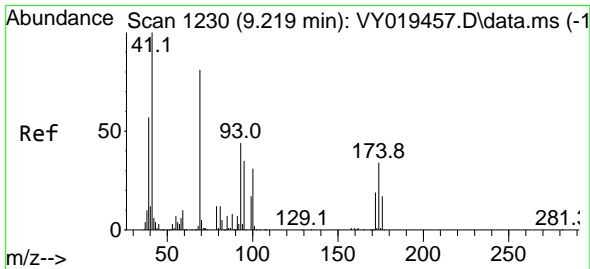
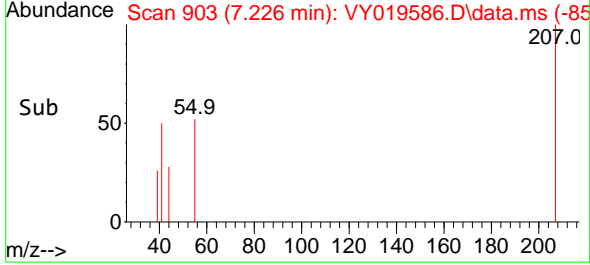
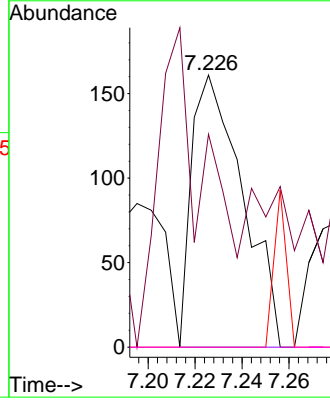


#41
 Methacrylonitrile
 Concen: 4.186 ug/l
 RT: 7.226 min Scan# 902
 Delta R.T. 0.007 min
 Lab File: VY019586.D
 Acq: 17 Sep 2024 15:25

Instrument :
 MSVOA_Y
 ClientSampleId :

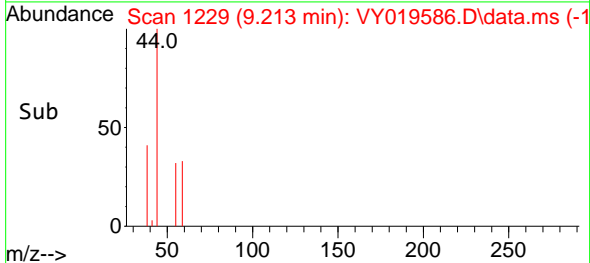
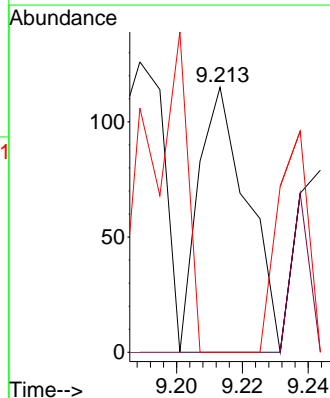
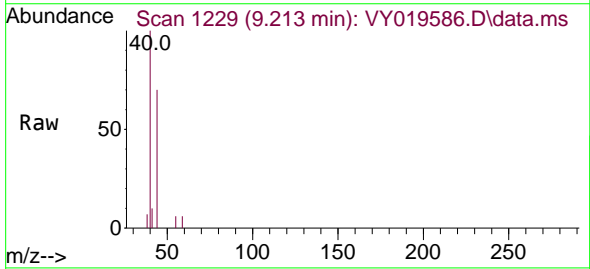


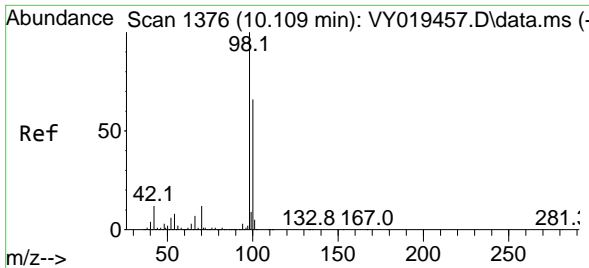
Tgt Ion	Resp	Lower	Upper
41	100		
39	112.8	48.0	72.0#
67	0.0	75.1	112.7#
52	0.0	29.8	44.6#



#48
 Methyl methacrylate
 Concen: 1.204 ug/l
 RT: 9.213 min Scan# 1229
 Delta R.T. -0.006 min
 Lab File: VY019586.D
 Acq: 17 Sep 2024 15:25

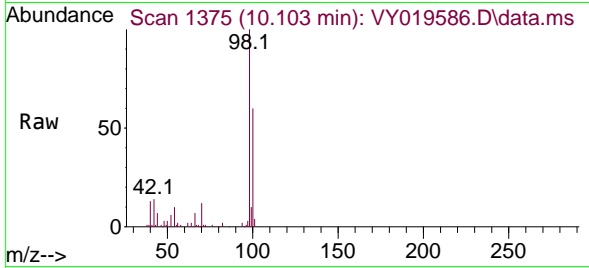
Tgt Ion	Resp	Lower	Upper
41	100		
69	0.0	84.1	126.1#
39	95.8	43.6	65.4#



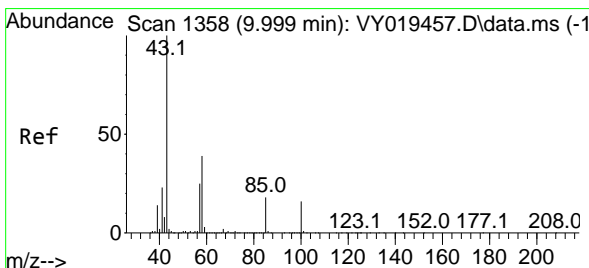
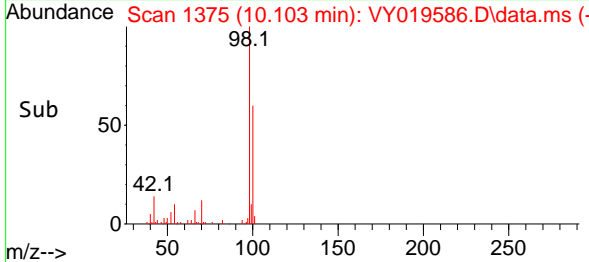
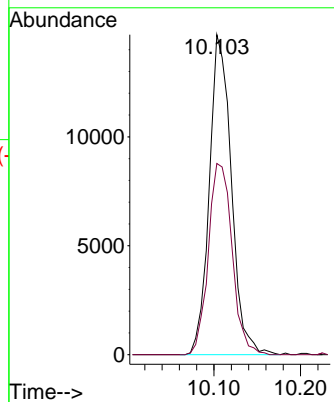


#50
 Toluene-d8
 Concen: 49.070 ug/l
 RT: 10.103 min Scan# 111
 Delta R.T. -0.006 min
 Lab File: VY019586.D
 Acq: 17 Sep 2024 15:25

Instrument :
 MSVOA_Y
 ClientSampleId :

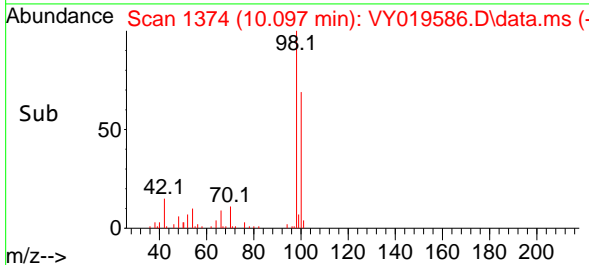
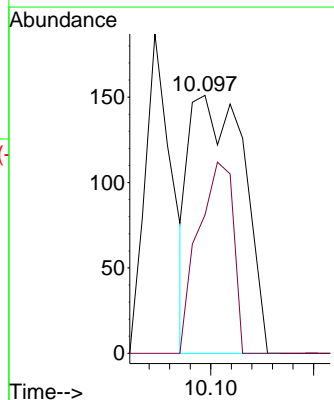
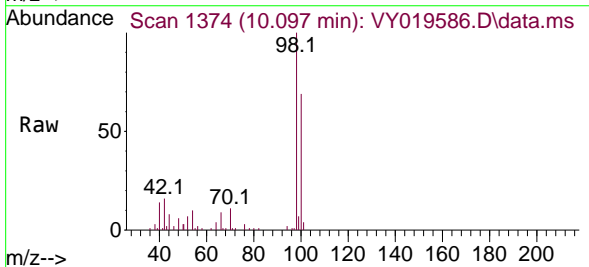


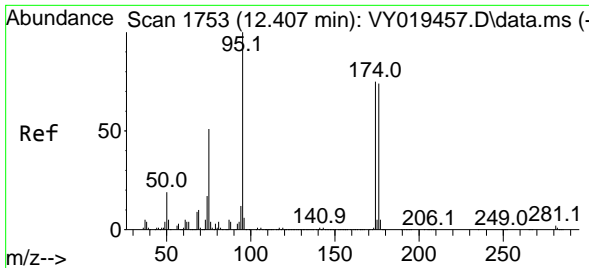
Tgt Ion: 98 Resp: 25926
 Ion Ratio Lower Upper
 98 100
 100 64.5 52.0 78.0



#51
 4-Methyl-2-Pentanone
 Concen: 2.622 ug/l
 RT: 10.097 min Scan# 1374
 Delta R.T. 0.098 min
 Lab File: VY019586.D
 Acq: 17 Sep 2024 15:25

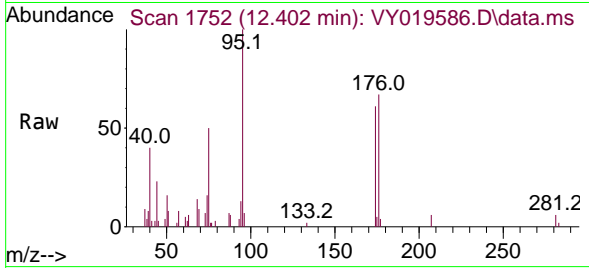
Tgt Ion: 43 Resp: 276
 Ion Ratio Lower Upper
 43 100
 58 47.8 35.7 53.5



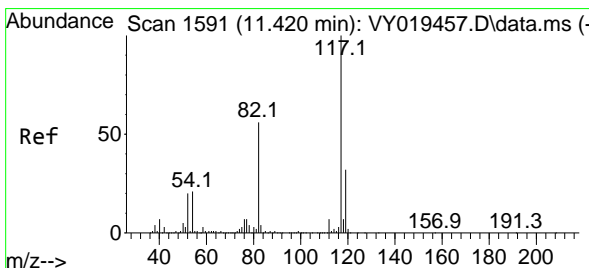
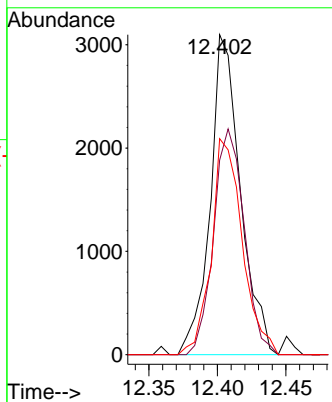
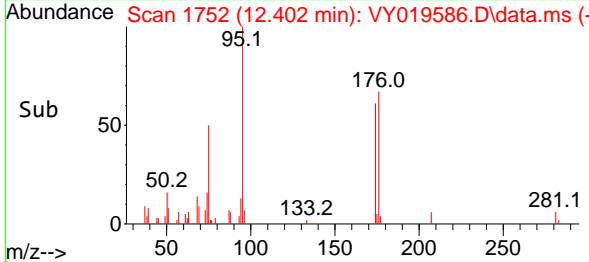


#62
 4-Bromofluorobenzene
 Concen: 23.342 ug/l
 RT: 12.402 min Scan# 11
 Delta R.T. -0.006 min
 Lab File: VY019586.D
 Acq: 17 Sep 2024 15:25

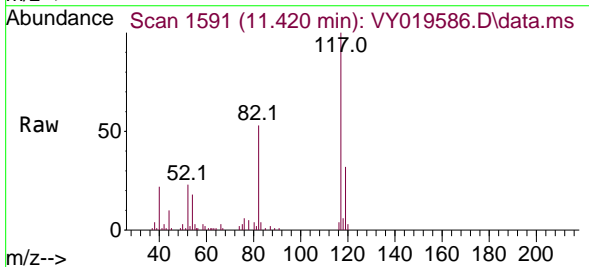
Instrument :
 MSVOA_Y
 ClientSampleId :



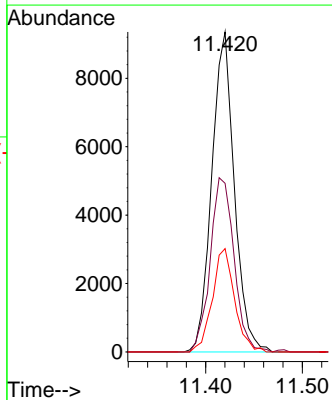
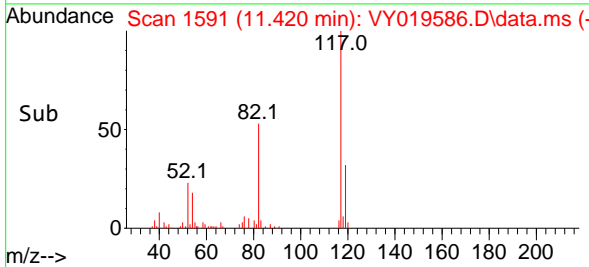
Tgt Ion: 95 Resp: 4742
 Ion Ratio Lower Upper
 95 100
 174 71.7 0.0 175.6
 176 69.0 0.0 171.4

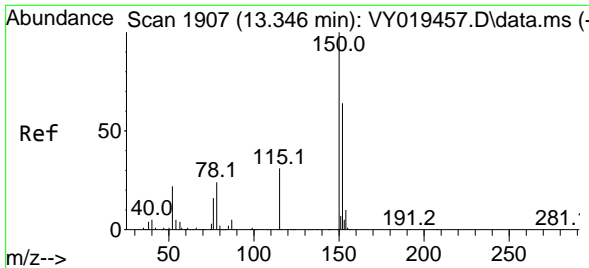


#63
 Chlorobenzene-d5
 Concen: 50.000 ug/l
 RT: 11.420 min Scan# 1591
 Delta R.T. 0.000 min
 Lab File: VY019586.D
 Acq: 17 Sep 2024 15:25



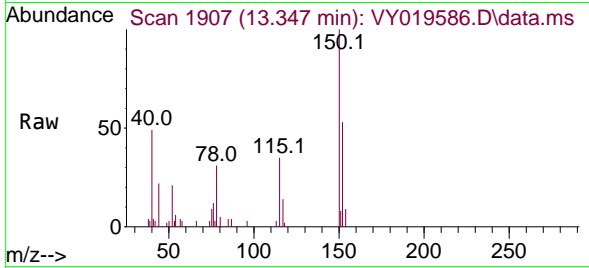
Tgt Ion: 117 Resp: 15157
 Ion Ratio Lower Upper
 117 100
 82 52.7 42.4 63.6
 119 32.3 25.9 38.9



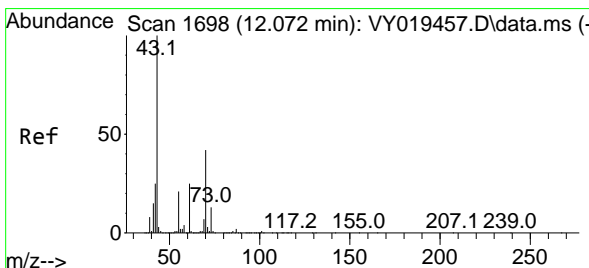
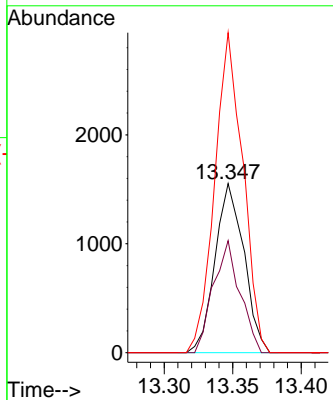
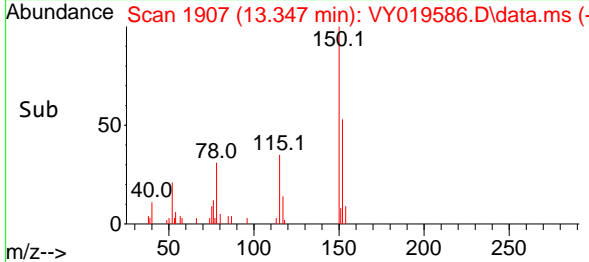


#72
 1,4-Dichlorobenzene-d4
 Concen: 50.000 ug/l
 RT: 13.347 min Scan# 1907
 Delta R.T. 0.000 min
 Lab File: VY019586.D
 Acq: 17 Sep 2024 15:25

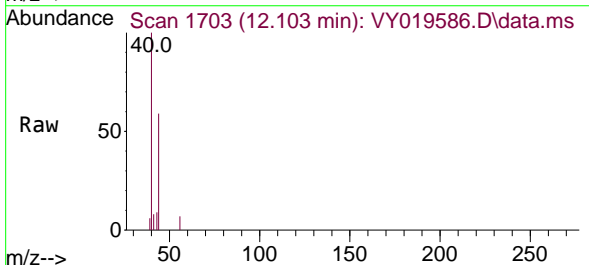
Instrument : MSVOA_Y
 ClientSampleId :



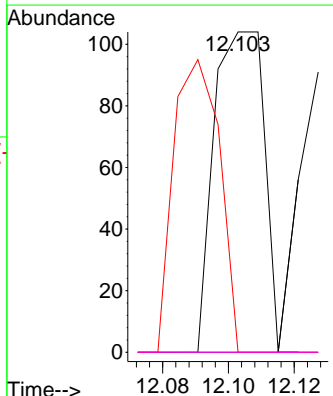
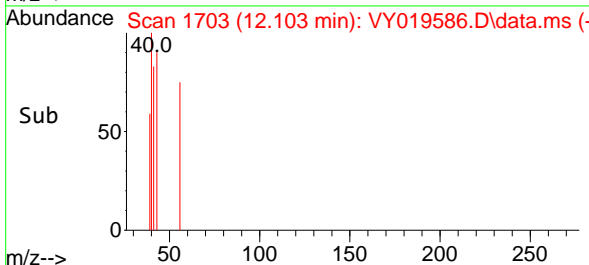
Tgt Ion:152 Resp: 2278
 Ion Ratio Lower Upper
 152 100
 115 61.1 28.2 84.7
 150 184.8 0.0 345.6

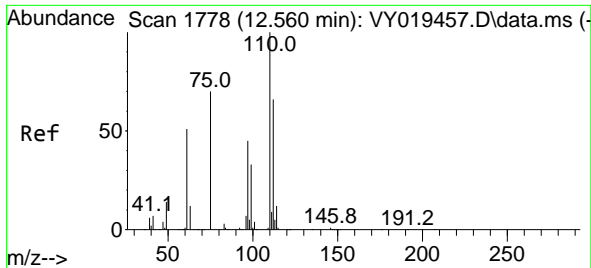


#74
 N-amy1 acetate
 Concen: 2.447 ug/l
 RT: 12.103 min Scan# 1703
 Delta R.T. 0.031 min
 Lab File: VY019586.D
 Acq: 17 Sep 2024 15:25



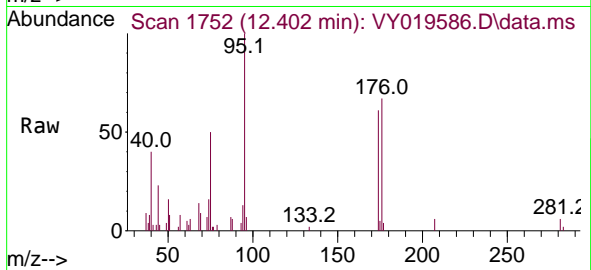
Tgt Ion: 43 Resp: 110
 Ion Ratio Lower Upper
 43 100
 70 0.0 41.4 62.2#
 55 83.6 23.3 34.9#
 61 0.0 22.6 33.8#



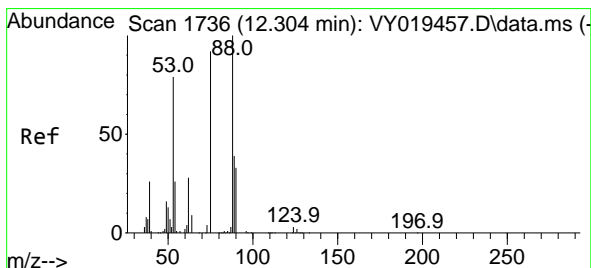
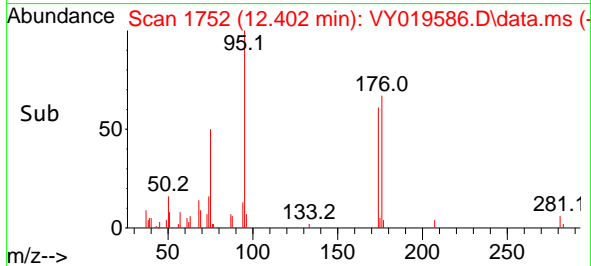
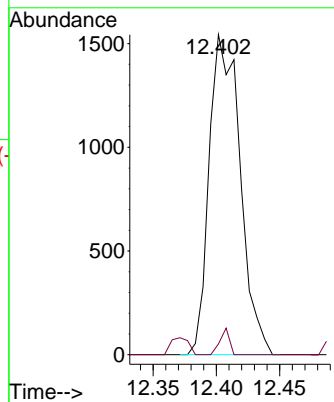


#76
 1,2,3-Trichloropropane
 Concen: 122.755 ug/l
 RT: 12.402 min Scan# 1752
 Delta R.T. -0.158 min
 Lab File: VY019586.D
 Acq: 17 Sep 2024 15:25

Instrument :
 MSVOA_Y
 ClientSampleId :

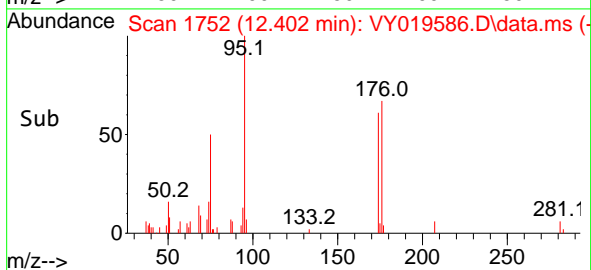
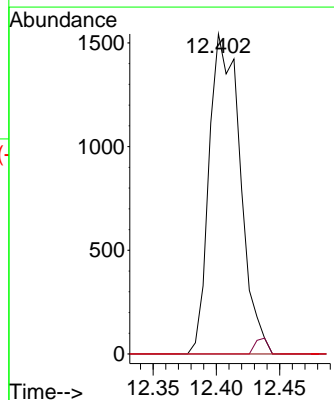
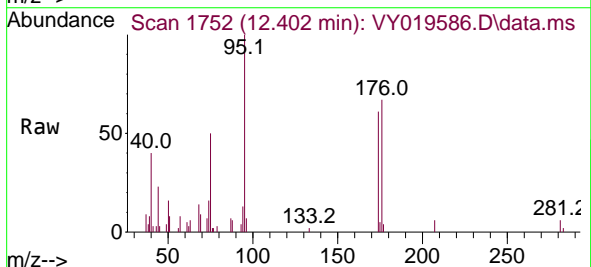


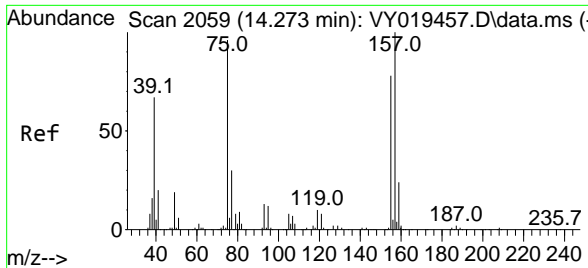
Tgt Ion: 75 Resp: 2621
 Ion Ratio Lower Upper
 75 100
 77 2.5 0.0 0.0#



#81
 trans-1,4-Dichloro-2-butene
 Concen: 235.654 ug/l
 RT: 12.402 min Scan# 1752
 Delta R.T. 0.098 min
 Lab File: VY019586.D
 Acq: 17 Sep 2024 15:25

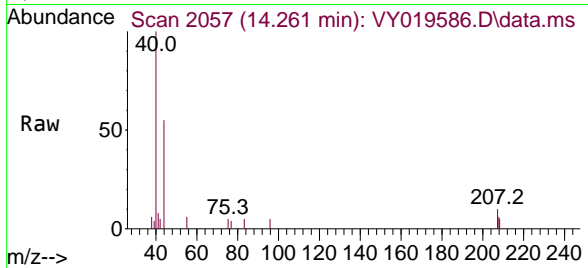
Tgt Ion: 75 Resp: 2621
 Ion Ratio Lower Upper
 75 100
 53 0.0 66.8 100.2#
 89 0.0 35.8 53.6#





#92
 1,2-Dibromo-3-Chloropropane
 Concen: 5.318 ug/l
 RT: 14.261 min Scan# 20
 Delta R.T. -0.012 min
 Lab File: VY019586.D
 Acq: 17 Sep 2024 15:25

Instrument :
 MSVOA_Y
 ClientSampleId :



Tgt Ion: 75 Resp: 26

Ion	Ratio	Lower	Upper
75	100		
155	0.0	48.6	145.8#
157	0.0	62.7	188.2#

