

Data Path : Z:\VOASRV\HPCHEM1\MSVOA_Y\DATA\VY091919\
 Data File : VY000077.D
 Acq On : 19 Sep 2019 15:11
 Operator : SY/MD
 Sample : K4878-05
 Misc : 6.55g/5.00ml/MSVOA_Y/SOIL
 ALS Vial : 9 Sample Multiplier: 1

Instrument :
 MSVOA_Y
 ClientSampleId :
 CSA-2-6-4

Quant Time: Sep 20 01:55:39 2019
 Quant Method : Z:\VOASRV\HPCHEM1\MSVOA_Y\METHODS\82Y091719S.M
 Quant Title : SW846 8260
 QLast Update : Thu Sep 19 05:38:39 2019
 Response via : Initial Calibration

Internal Standards	R.T.	QIon	Response	Conc	Units	Dev(Min)
1) Pentafluorobenzene	7.79	168	113179	50.00	ug/l	0.00
34) 1,4-Difluorobenzene	8.69	114	218464	50.00	ug/l	0.00
63) Chlorobenzene-d5	11.49	117	173456	50.00	ug/l	0.00
72) 1,4-Dichlorobenzene-d4	13.42	152	54536	50.00	ug/l	0.00

System Monitoring Compounds

33) 1,2-Dichloroethane-d4	8.15	65	63858	49.04	ug/l	0.00
Spiked Amount	50.000		Recovery	=	98.08%	
35) Dibromofluoromethane	7.73	113	62959	47.60	ug/l	0.01
Spiked Amount	50.000		Recovery	=	95.20%	
50) Toluene-d8	10.18	98	256516	49.37	ug/l	0.00
Spiked Amount	50.000		Recovery	=	98.74%	
62) 4-Bromofluorobenzene	12.48	95	71118	36.87	ug/l	0.00
Spiked Amount	50.000		Recovery	=	73.74%	

Target Compounds

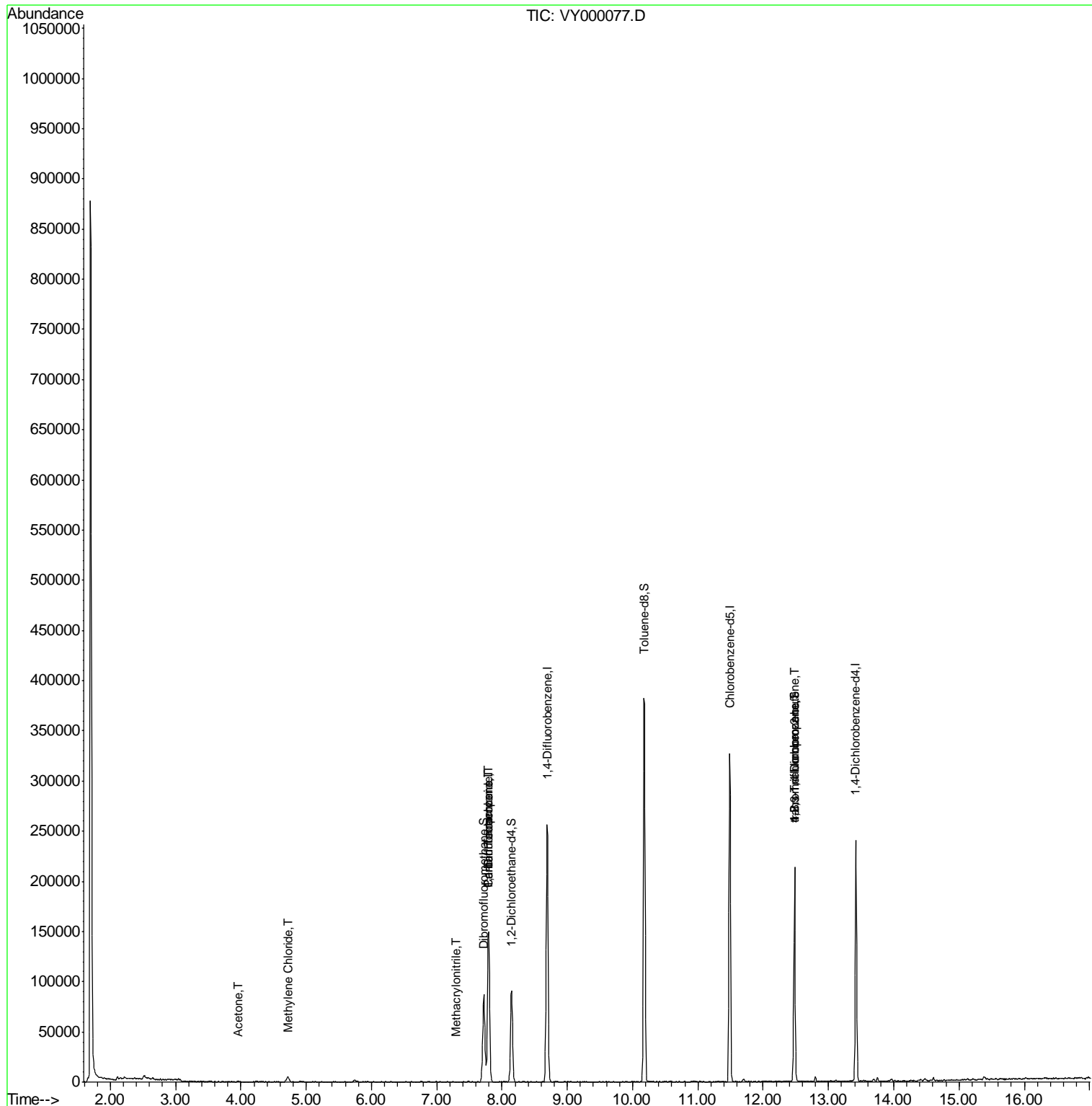
					Qvalue
3) Chloromethane	2.11	50	1661	Below Cal	# 72
5) Bromomethane	2.65	94	144	Below Cal	# 6
13) Acrolein	3.60	56	30	Below Cal	# 87
16) Acetone	3.95	43	743	2.451 ug/l	# 79
17) Carbon Disulfide	4.21	76	27	Below Cal	# 77
20) Methylene Chloride	4.72	84	3530	2.475 ug/l	# 88
31) Cyclohexane	7.78	56	1236	Below Cal	# 1
36) 1,1-Dichloropropene	7.80	75	10327	6.322 ug/l	# 43
38) Carbon Tetrachloride	7.79	117	11929	7.737 ug/l	# 17
41) Methacrylonitrile	7.31	41	47	4.359 ug/l	# 1
76) 1,2,3-Trichloropropane	12.48	75	36184	47.157 ug/l	# 100
81) trans-1,4-Dichloro-2-buten	12.48	75	36184	90.694 ug/l	# 19

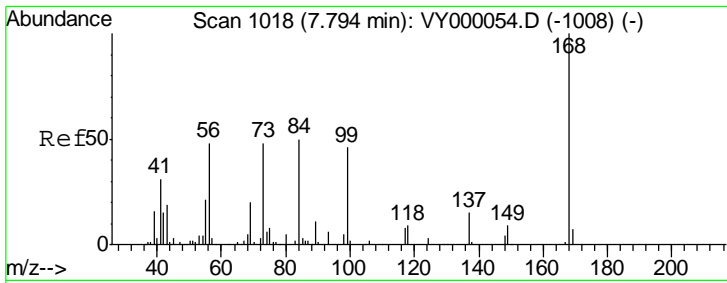
(#) = qualifier out of range (m) = manual integration (+) = signals summed

Data Path : Z:\VOASRV\HPCHEM1\MSVOA_Y\DATA\VY091919\
 Data File : VY000077.D
 Acq On : 19 Sep 2019 15:11
 Operator : SY/MD
 Sample : K4878-05
 Misc : 6.55g/5.00ml/MSVOA_Y/SOIL
 ALS Vial : 9 Sample Multiplier: 1

Instrument :
 MSVOA_Y
 Client Sampled :
 CSA-2-6-4

Quant Time: Sep 20 01:55:39 2019
 Quant Method : Z:\VOASRV\HPCHEM1\MSVOA_Y\METHODS\82Y091719S.M
 Quant Title : SW846 8260
 QLast Update : Thu Sep 19 05:38:39 2019
 Response via : Initial Calibration

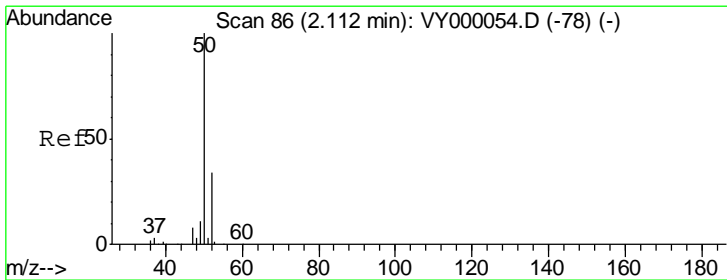
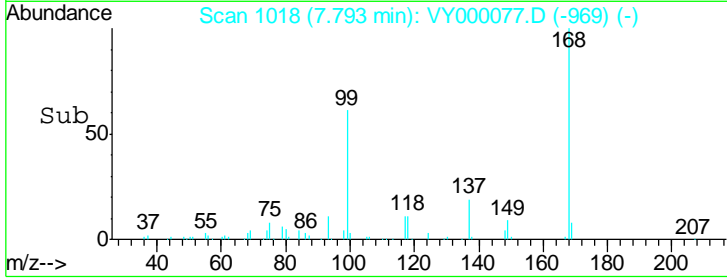
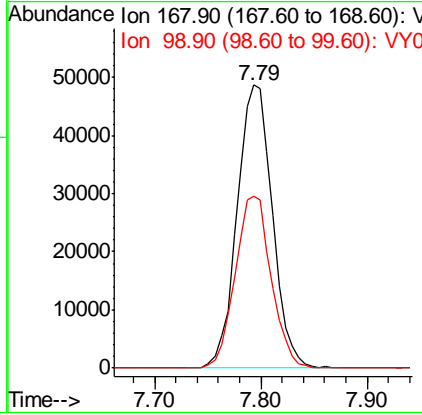
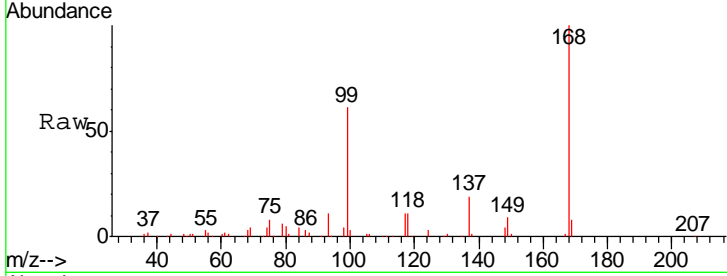




#1
 Pentafluorobenzene
 Concen: 50.000 ug/l
 RT: 7.79 min Scan# 1018
 Delta R.T. -0.00 min
 Lab File: VY000077.D
 Acq: 19 Sep 2019 15:11

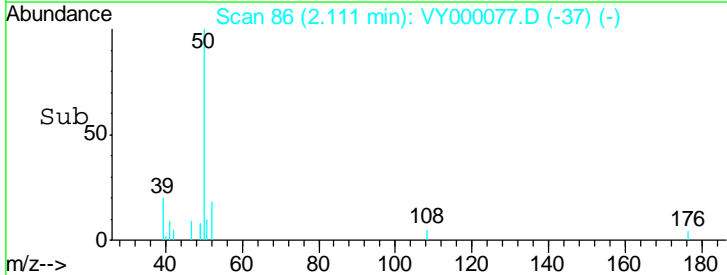
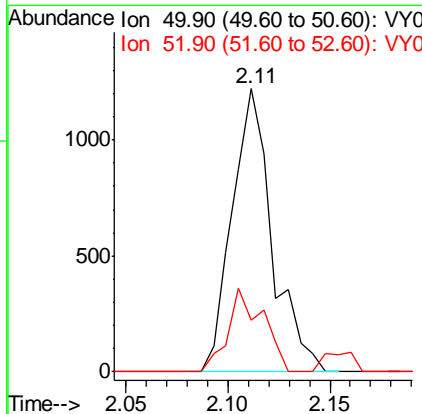
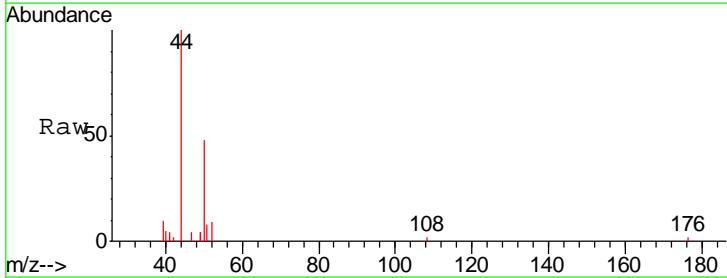
Instrument :
 MSVOA_Y
 ClientSampled :
 CSA-2-6-4

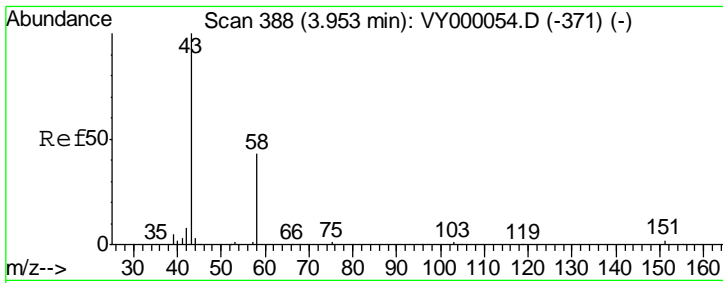
Tgt Ion: 168 Resp: 113179
 Ion Ratio Lower Upper
 168 100
 99 60.6 44.2 66.2



#3
 Chloromethane
 Concen: Below Cal
 RT: 2.11 min Scan# 86
 Delta R.T. 0.00 min
 Lab File: VY000077.D
 Acq: 19 Sep 2019 15:11

Tgt Ion: 50 Resp: 1661
 Ion Ratio Lower Upper
 50 100
 52 18.3 27.3 40.9#

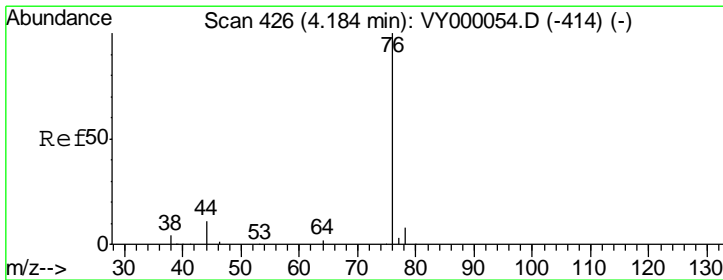
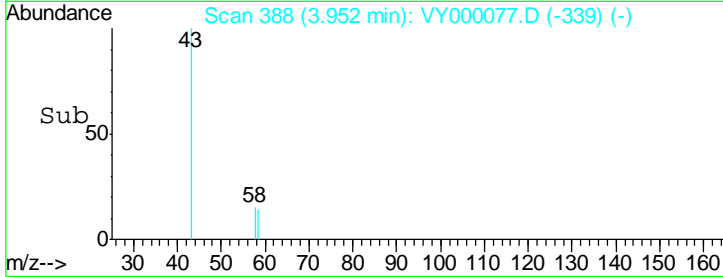
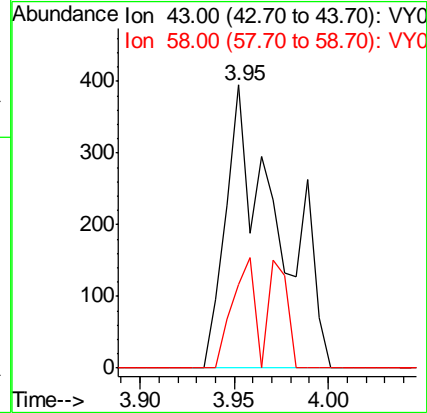
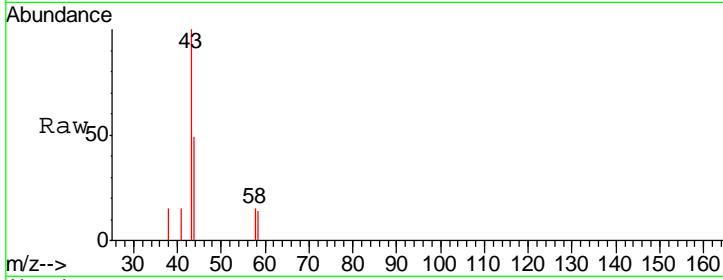




#16
 Acetone
 Concen: 2.451 ug/l
 RT: 3.95 min Scan# 388
 Delta R.T. -0.00 min
 Lab File: VY000077.D
 Acq: 19 Sep 2019 15:11

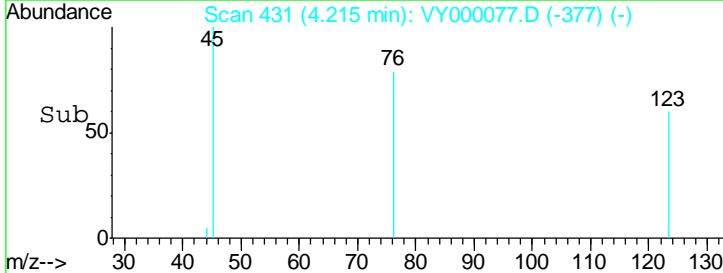
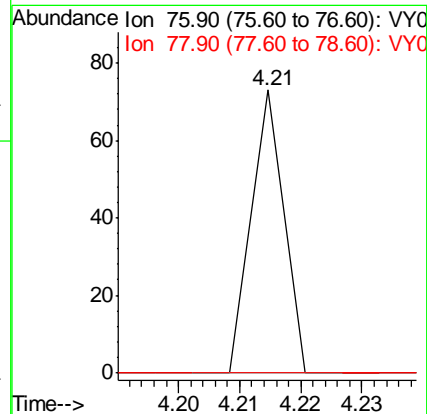
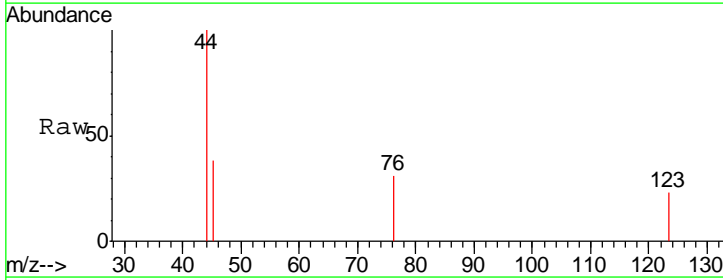
Instrument :
 MSVOA_Y
 ClientSampled :
 CSA-2-6-4

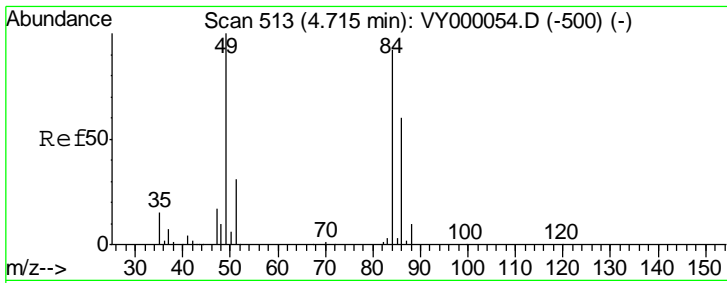
Tgt Ion: 43 Resp: 743
 Ion Ratio Lower Upper
 43 100
 58 29.4 34.5 51.7#



#17
 Carbon Disulfide
 Concen: Below Cal
 RT: 4.21 min Scan# 431
 Delta R.T. 0.03 min
 Lab File: VY000077.D
 Acq: 19 Sep 2019 15:11

Tgt Ion: 76 Resp: 27
 Ion Ratio Lower Upper
 76 100
 78 0.0 6.6 9.8#

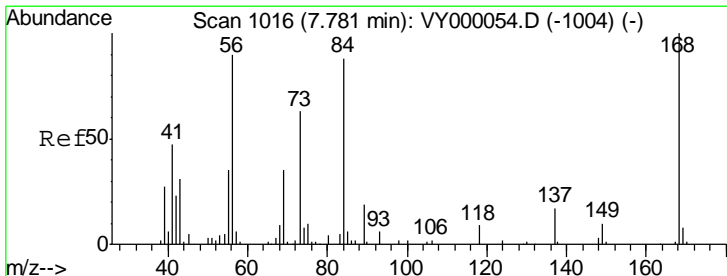
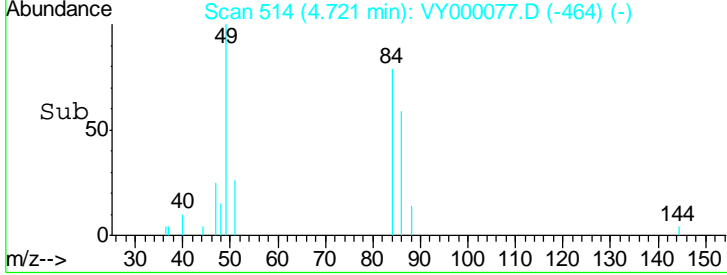
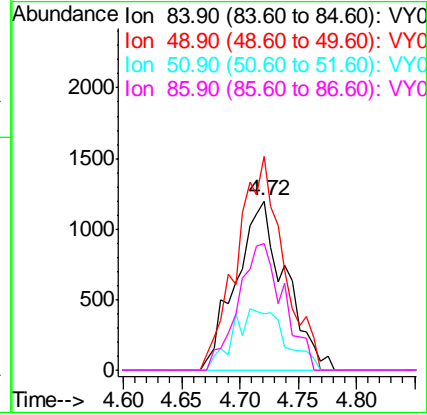
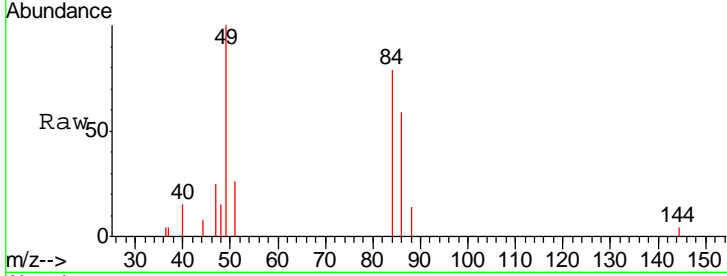




#20
 Methylene Chloride
 Concen: 2.475 ug/l
 RT: 4.72 min Scan# 514
 Delta R.T. 0.01 min
 Lab File: VY000077.D
 Acq: 19 Sep 2019 15:11

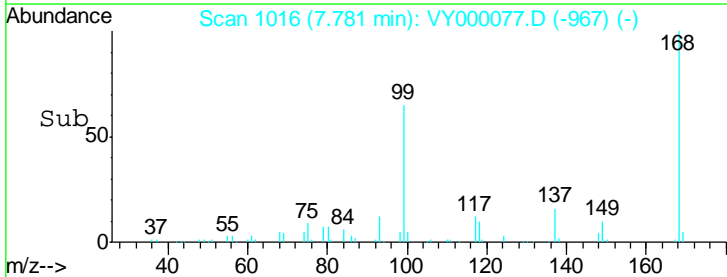
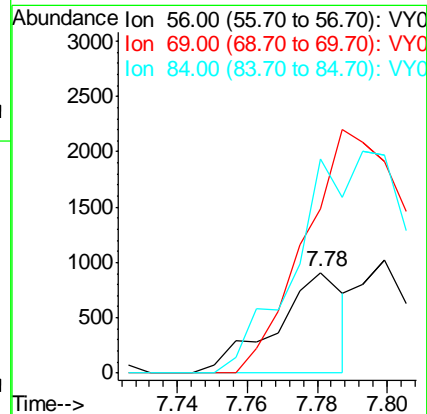
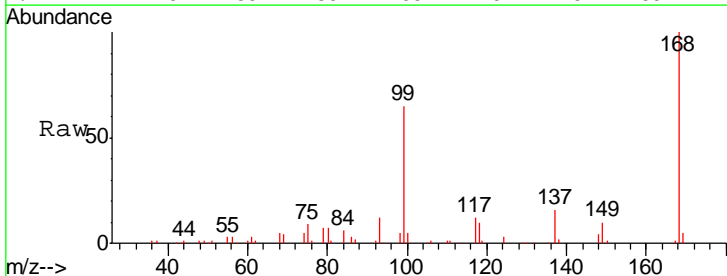
Instrument :
 MSVOA_Y
 ClientSampled :
 CSA-2-6-4

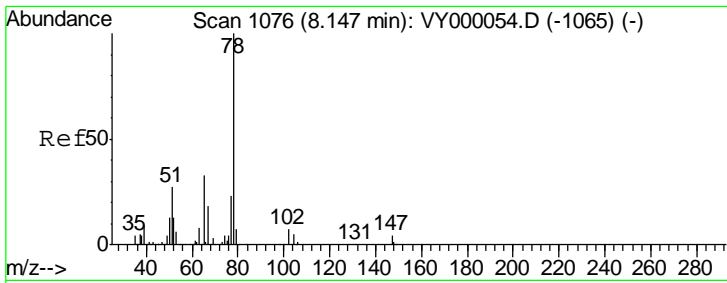
Tgt Ion	Resp	Lower	Upper
84	100		
49	126.3	87.4	131.0
51	33.1	27.2	40.8
86	74.7	52.8	79.2



#31
 Cyclohexane
 Concen: Below Cal
 RT: 7.78 min Scan# 1016
 Delta R.T. -0.00 min
 Lab File: VY000077.D
 Acq: 19 Sep 2019 15:11

Tgt Ion	Resp	Lower	Upper
56	100		
69	163.2	30.9	46.3#
84	213.6	78.5	117.7#

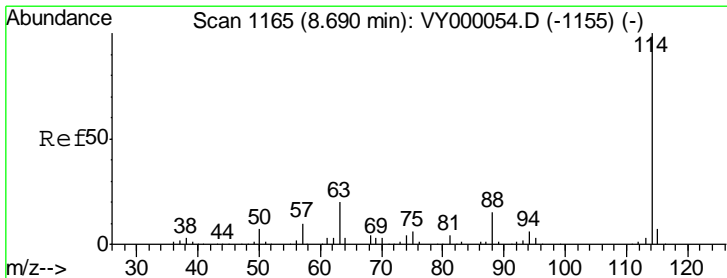
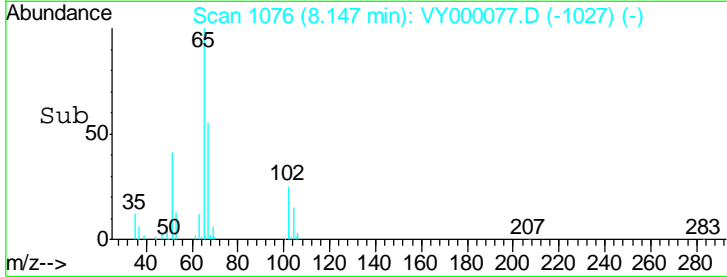
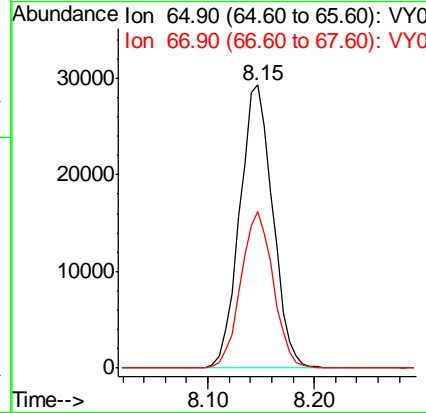
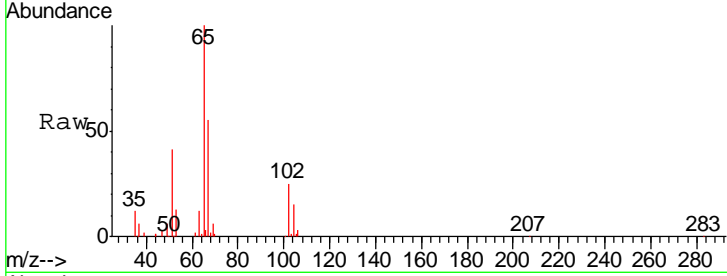




#33
 1,2-Dichloroethane-d4
 Concen: 49.041 ug/l
 RT: 8.15 min Scan# 1076
 Delta R.T. -0.00 min
 Lab File: VY000077.D
 Acq: 19 Sep 2019 15:11

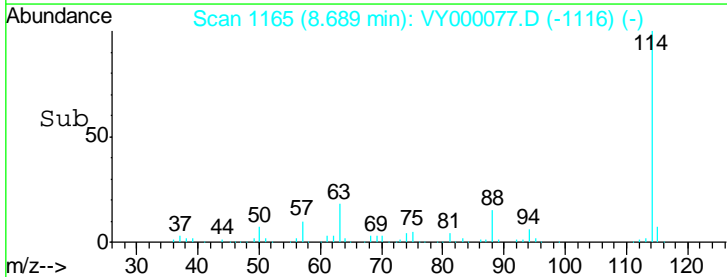
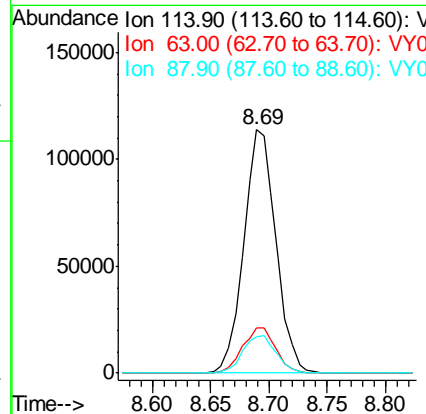
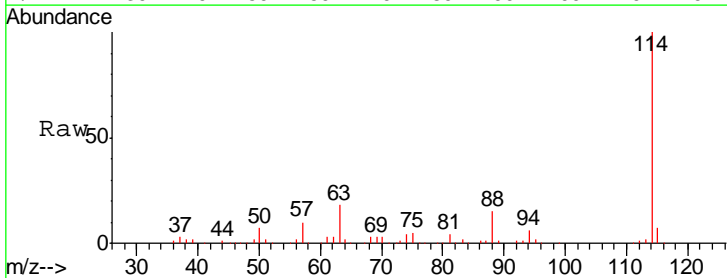
Instrument :
 MSVOA_Y
 ClientSampled :
 CSA-2-6-4

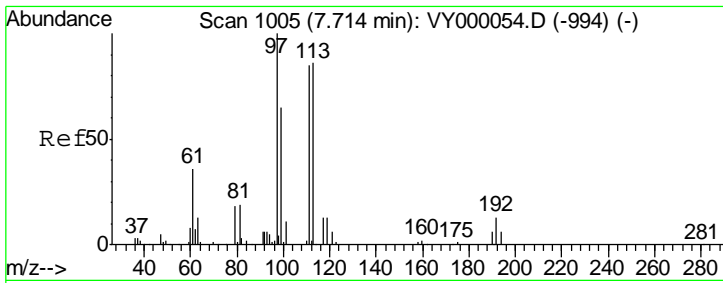
Tgt Ion: 65 Resp: 63858
 Ion Ratio Lower Upper
 65 100
 67 54.0 0.0 111.0



#34
 1,4-Difluorobenzene
 Concen: 50.000 ug/l
 RT: 8.69 min Scan# 1165
 Delta R.T. -0.00 min
 Lab File: VY000077.D
 Acq: 19 Sep 2019 15:11

Tgt Ion: 114 Resp: 218464
 Ion Ratio Lower Upper
 114 100
 63 18.4 0.0 39.4
 88 15.1 0.0 30.2

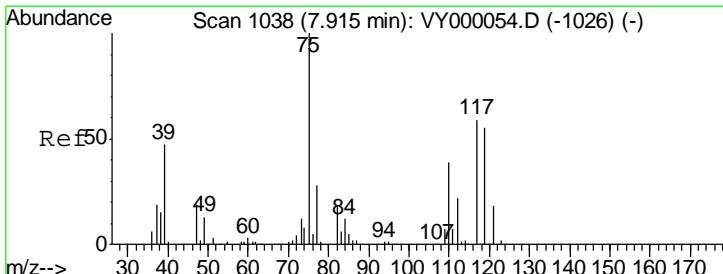
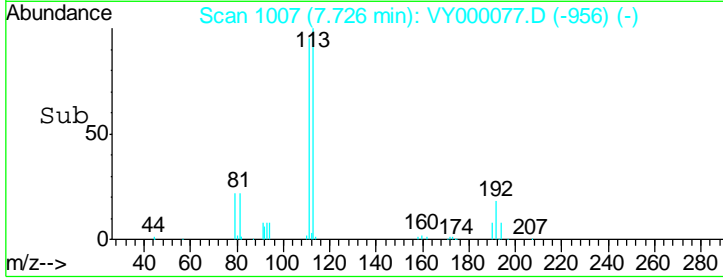
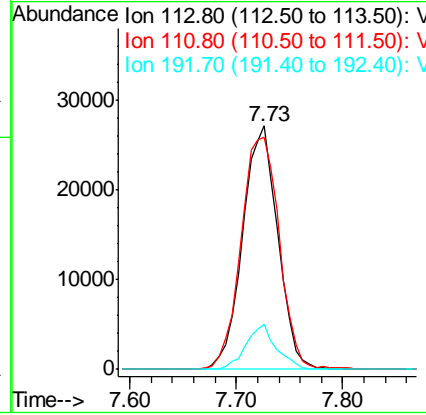
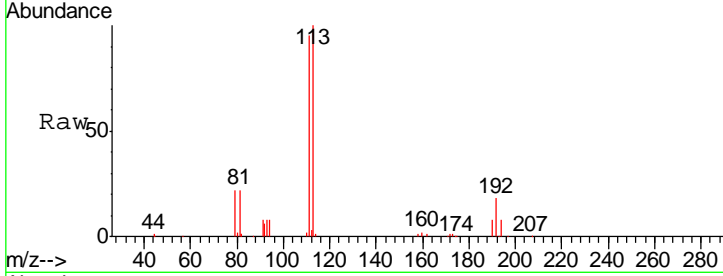




#35
 Dibromofluoromethane
 Concen: 47.597 ug/l
 RT: 7.73 min Scan# 1007
 Delta R.T. 0.01 min
 Lab File: VY000077.D
 Acq: 19 Sep 2019 15:11

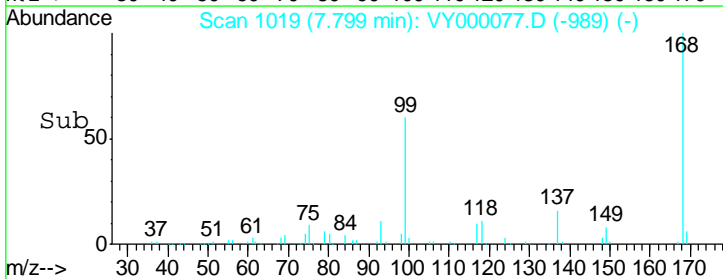
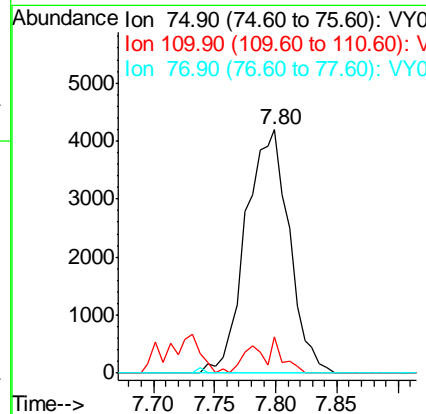
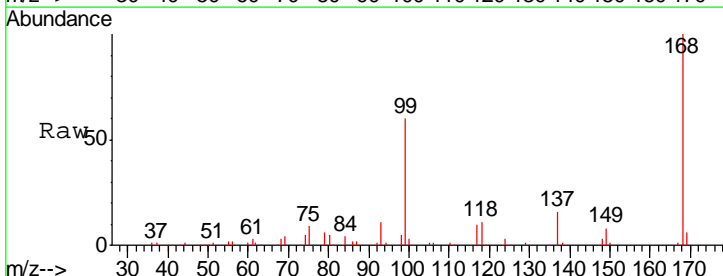
Instrument :
 MSVOA_Y
 ClientSampled :
 CSA-2-6-4

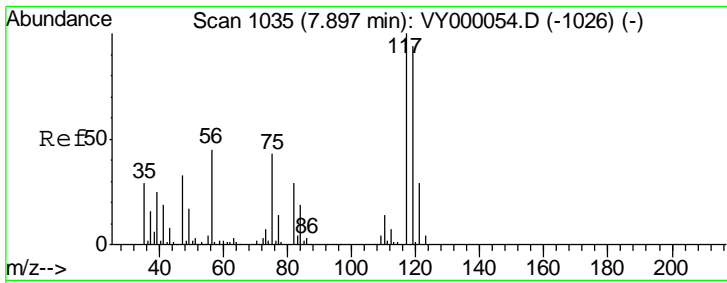
Tgt Ion	Resp	Lower	Upper
113	62959		
111	104.0	81.7	122.5
192	15.9	13.4	20.2



#36
 1,1-Dichloropropene
 Concen: 6.322 ug/l
 RT: 7.80 min Scan# 1019
 Delta R.T. -0.12 min
 Lab File: VY000077.D
 Acq: 19 Sep 2019 15:11

Tgt Ion	Resp	Lower	Upper
75	10327		
110	4.0	19.6	58.7#
77	0.0	24.3	36.5#

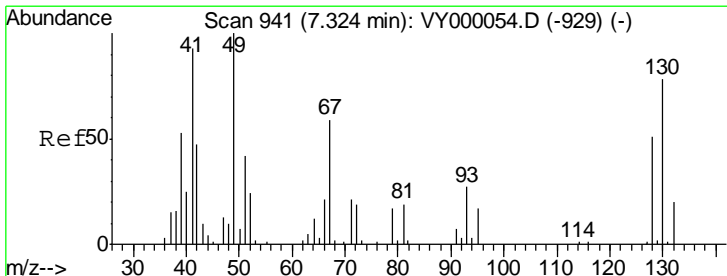
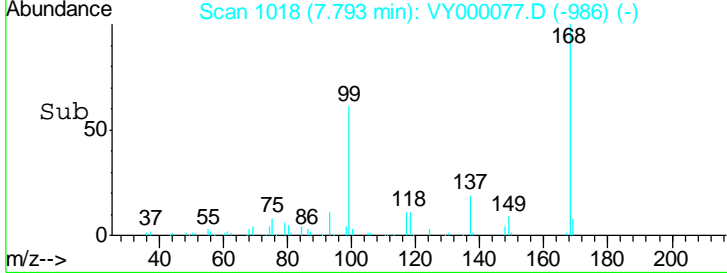
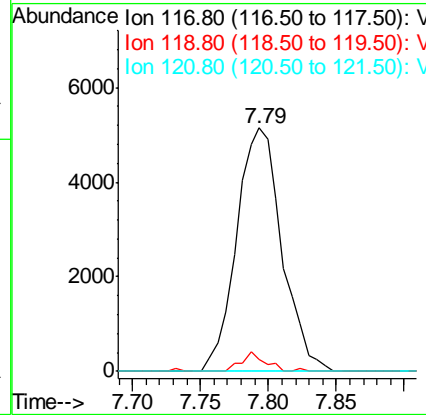
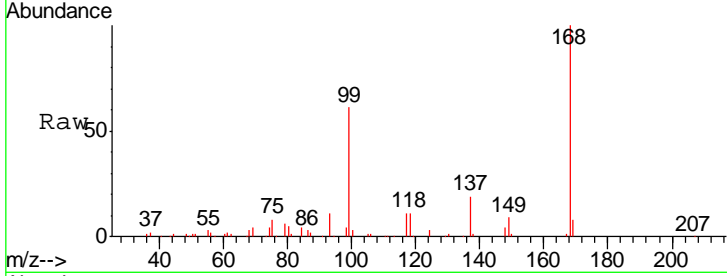




#38
 Carbon Tetrachloride
 Concen: 7.737 ug/l
 RT: 7.79 min Scan# 1018
 Delta R.T. -0.10 min
 Lab File: VY000077.D
 Acq: 19 Sep 2019 15:11

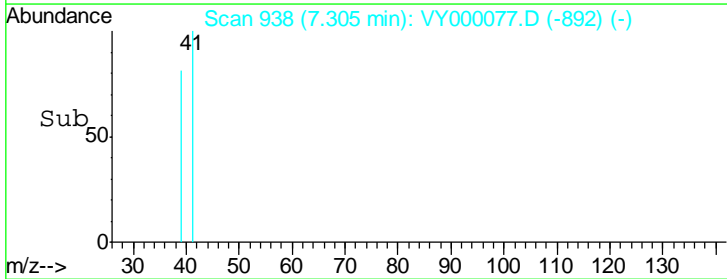
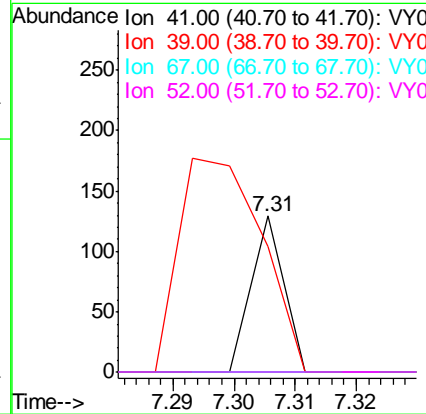
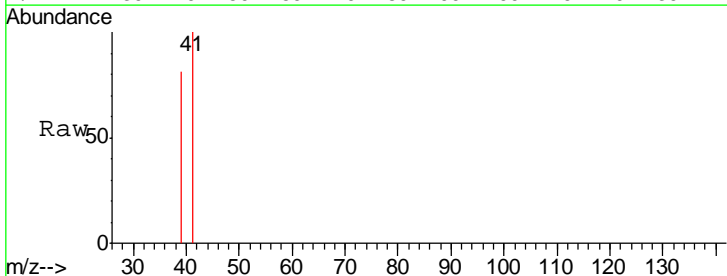
Instrument :
 MSVOA_Y
 ClientSampled :
 CSA-2-6-4

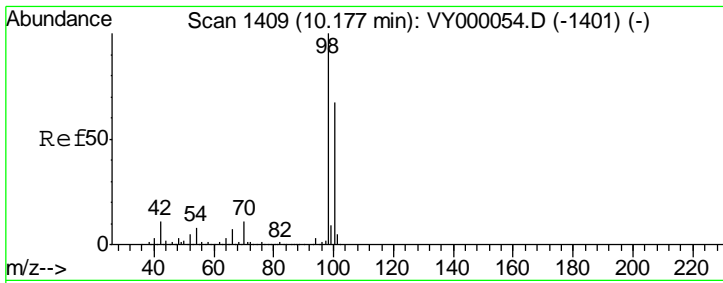
Tgt Ion	Resp	Lower	Upper
117	11929		
119	4.7	75.0	112.6#
121	0.0	22.8	34.2#



#41
 Methacrylonitrile
 Concen: 4.359 ug/l
 RT: 7.31 min Scan# 938
 Delta R.T. -0.02 min
 Lab File: VY000077.D
 Acq: 19 Sep 2019 15:11

Tgt Ion	Resp	Lower	Upper
41	47		
39	351.1	91.8	137.6#
67	0.0	0.0	0.0
52	0.0	0.0	0.0

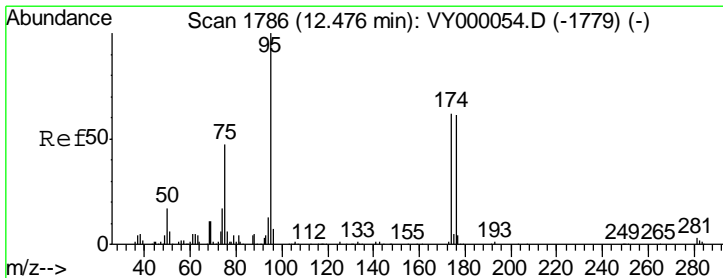
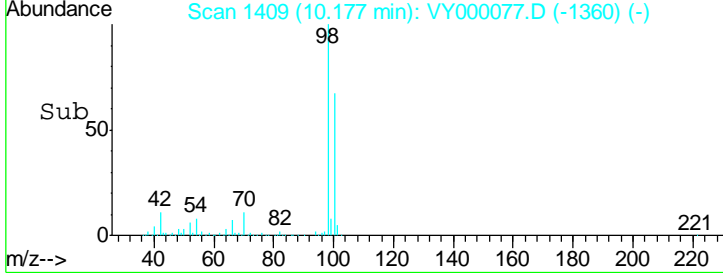
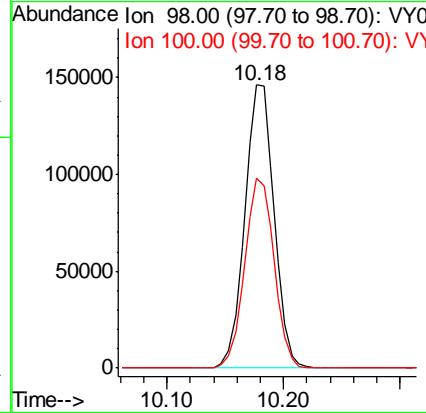
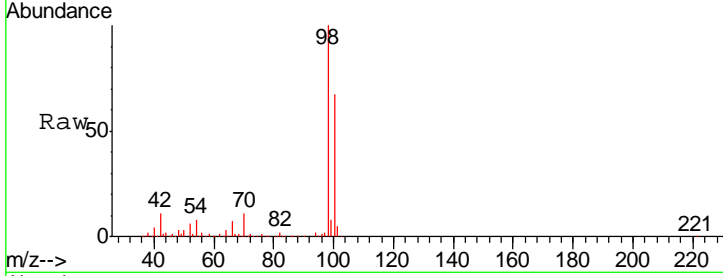




#50
 Toluene-d8
 Concen: 49.374 ug/l
 RT: 10.18 min Scan# 1409
 Delta R.T. -0.00 min
 Lab File: VY000077.D
 Acq: 19 Sep 2019 15:11

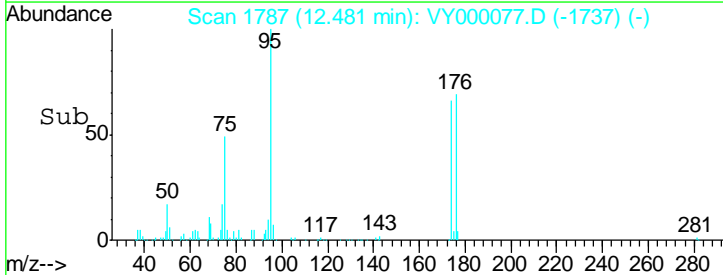
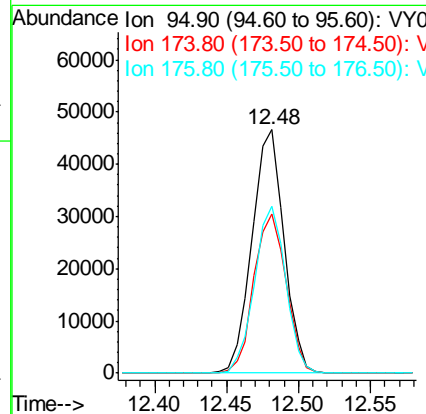
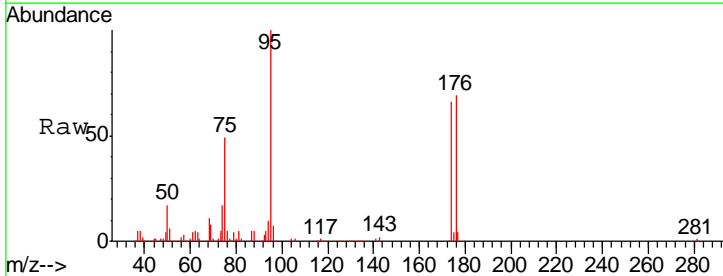
Instrument : MSVOA_Y
 ClientSampled : CSA-2-6-4

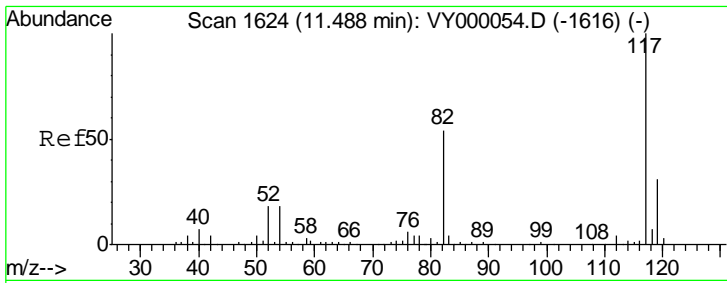
Tgt Ion: 98 Resp: 256516
 Ion Ratio Lower Upper
 98 100
 100 67.3 53.1 79.7



#62
 4-Bromofluorobenzene
 Concen: 36.870 ug/l
 RT: 12.48 min Scan# 1787
 Delta R.T. 0.01 min
 Lab File: VY000077.D
 Acq: 19 Sep 2019 15:11

Tgt Ion: 95 Resp: 71118
 Ion Ratio Lower Upper
 95 100
 174 66.2 0.0 137.2
 176 67.2 0.0 135.0

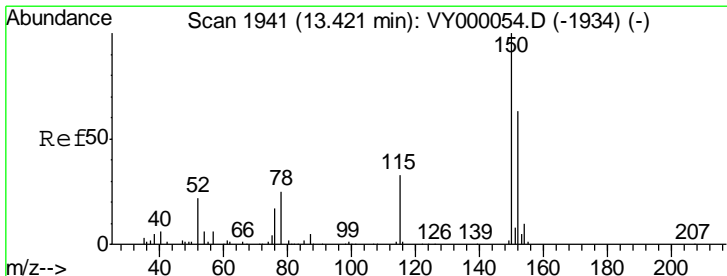
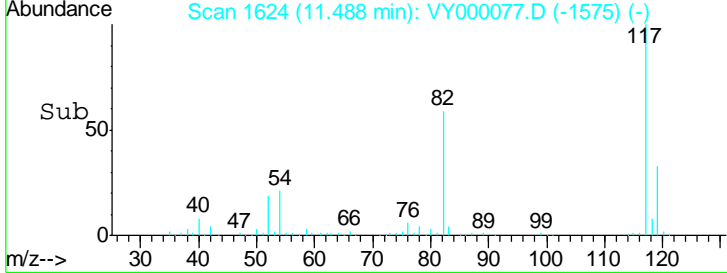
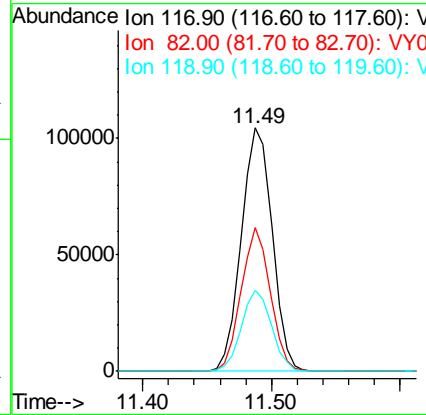
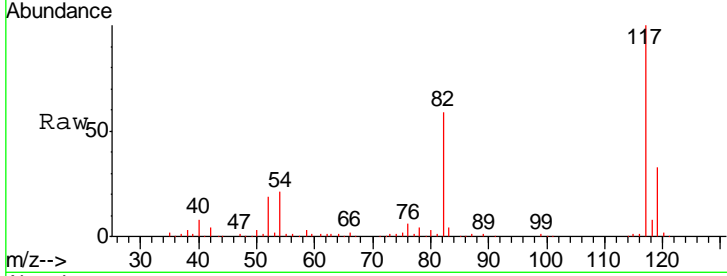




#63
 Chlorobenzene-d5
 Concen: 50.000 ug/l
 RT: 11.49 min Scan# 1624
 Delta R.T. -0.00 min
 Lab File: VY000077.D
 Acq: 19 Sep 2019 15:11

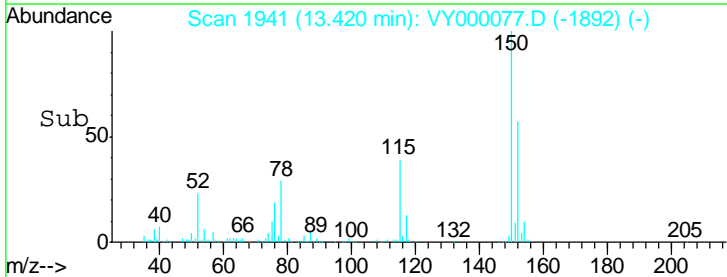
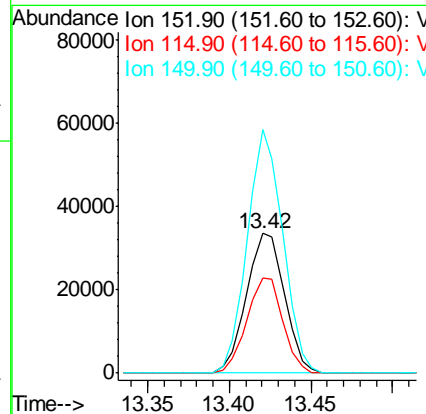
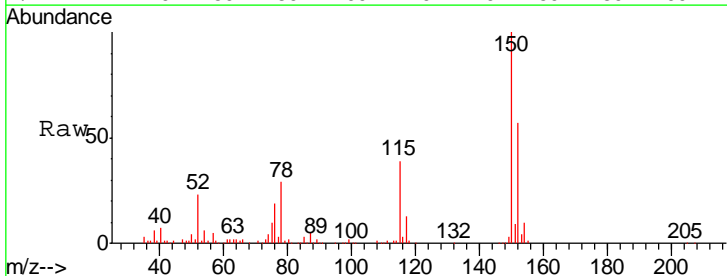
Instrument :
 MSVOA_Y
 ClientSampled :
 CSA-2-6-4

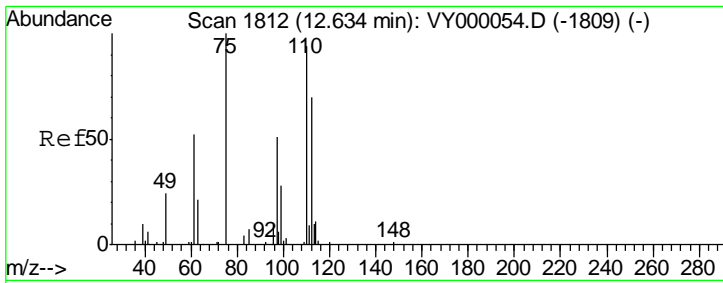
Tgt Ion	Resp	Lower	Upper
117	173456		
82	59.3	43.5	65.3
119	33.2	24.6	36.8



#72
 1,4-Dichlorobenzene-d4
 Concen: 50.000 ug/l
 RT: 13.42 min Scan# 1941
 Delta R.T. -0.00 min
 Lab File: VY000077.D
 Acq: 19 Sep 2019 15:11

Tgt Ion	Resp	Lower	Upper
152	54536		
115	64.7	30.7	92.1
150	162.7	0.0	351.6

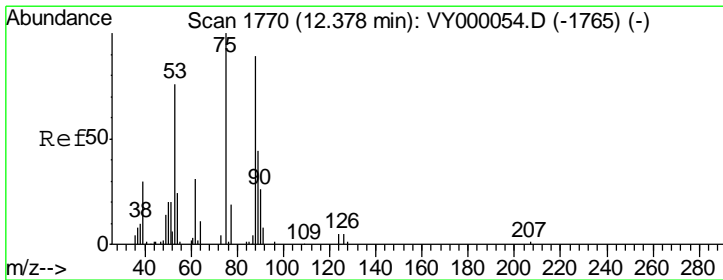
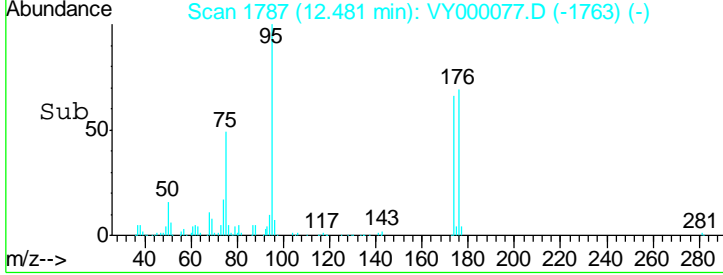
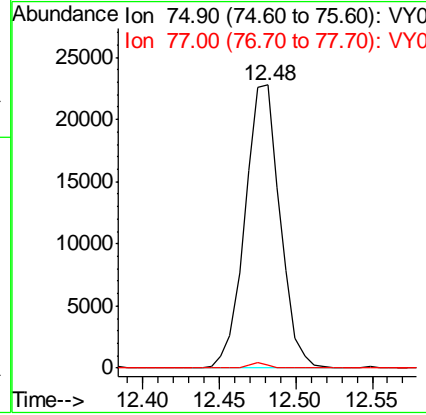
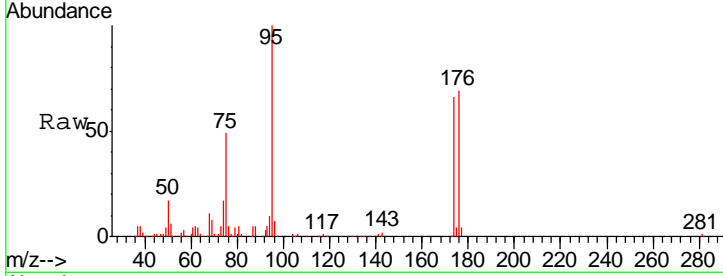




#76
 1,2,3-Trichloropropane
 Concen: 47.157 ug/l
 RT: 12.48 min Scan# 1787
 Delta R.T. -0.15 min
 Lab File: VY000077.D
 Acq: 19 Sep 2019 15:11

Instrument : MSVOA_Y
 ClientSampled : CSA-2-6-4

Tgt Ion	Resp	Lower	Upper
75	100		
77	1.3	0.0	0.0#



#81
 trans-1,4-Dichloro-2-butene
 Concen: 90.694 ug/l
 RT: 12.48 min Scan# 1787
 Delta R.T. 0.10 min
 Lab File: VY000077.D
 Acq: 19 Sep 2019 15:11

Tgt Ion	Resp	Lower	Upper
75	100		
53	0.0	60.9	91.3#
89	0.0	35.3	52.9#

