

Data Path : Z:\voasrv\HPCHEM1\MSVOA_Y\Data\VY092123\
 Data File : VY015677.D
 Acq On : 21 Sep 2023 17:57
 Operator : SY/MD
 Sample : 04567-11
 Misc : 5.05g/5.0mL/MSVOA_Y/SOIL
 ALS Vial : 14 Sample Multiplier: 1

Instrument :
 MSVOA_Y
 ClientSampleId :
 SE-SOIL-6

Integration Parameters: RTEINT.P

Integrator: RTE
 Smoothing : ON Filtering: 5
 Sampling : 1 Min Area: 3 % of largest Peak
 Start Thrs: 0.2 Max Peaks: 100
 Stop Thrs : 0 Peak Location: TOP

If leading or trailing edge < 100 prefer < Baseline drop else tangent >
 Peak separation: 5

Method : Z:\voasrv\HPCHEM1\MSVOA_Y\methods\82Y091923S.M
 Title : SW846 8260

Signal : TIC: VY015677.D\data.ms

peak #	R.T. min	first scan	max scan	last scan	PK TY	peak height	corr. area	corr. % max.	% of total
1	4.716	463	475	490	rBV2	34417	108322	15.79%	2.754%
2	5.741	633	643	659	rVB3	14026	44199	6.44%	1.124%
3	7.716	956	967	973	rBV	101238	238881	34.81%	6.073%
4	7.789	973	979	992	rVB	166466	373104	54.37%	9.485%
5	8.143	1027	1037	1048	rBV	108647	238179	34.71%	6.055%
6	8.691	1117	1127	1138	rBV	252843	506847	73.86%	12.885%
7	10.179	1364	1371	1381	rBV	407388	686199	100.00%	17.445%
8	10.581	1430	1437	1443	rBV	4265	7844	1.14%	0.199%
9	11.490	1579	1586	1597	rBV	384173	607487	88.53%	15.444%
10	11.709	1617	1622	1628	rBV2	4883	8152	1.19%	0.207%
11	12.483	1742	1749	1758	rBV2	306501	492489	71.77%	12.520%
12	13.422	1888	1903	1915	rBV	374761	585434	85.32%	14.883%
13	13.526	1915	1920	1926	rVB2	5779	9257	1.35%	0.235%
14	13.782	1954	1962	1967	rBV3	5637	10626	1.55%	0.270%
15	13.965	1986	1992	1997	rVB2	10536	16557	2.41%	0.421%

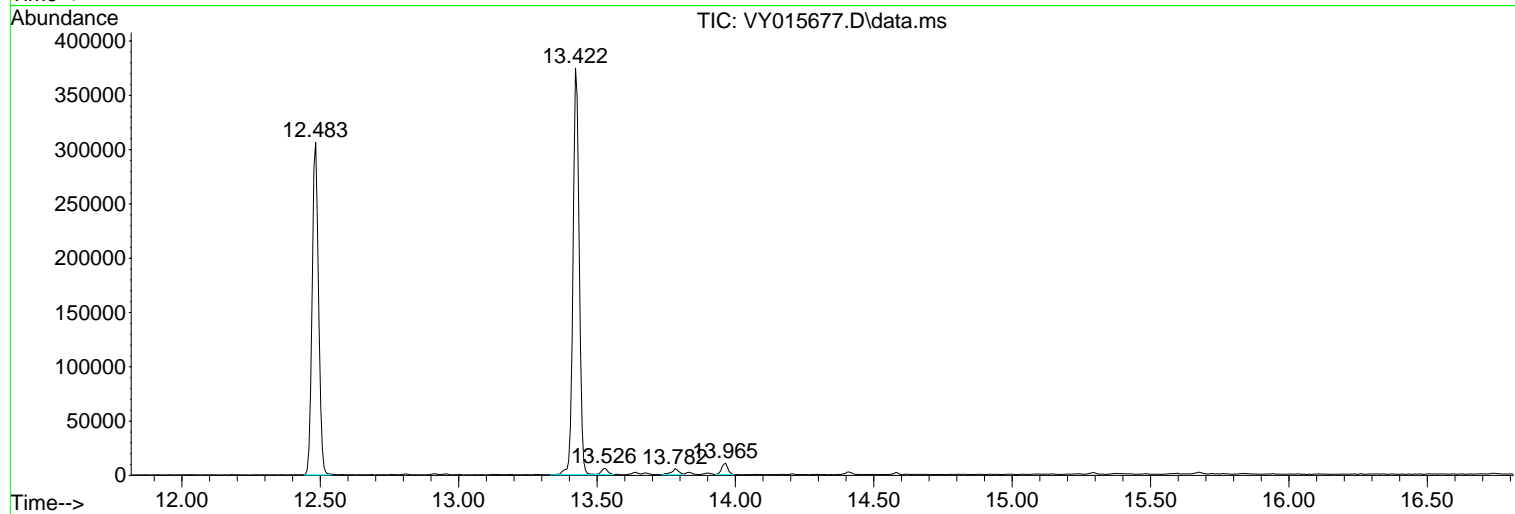
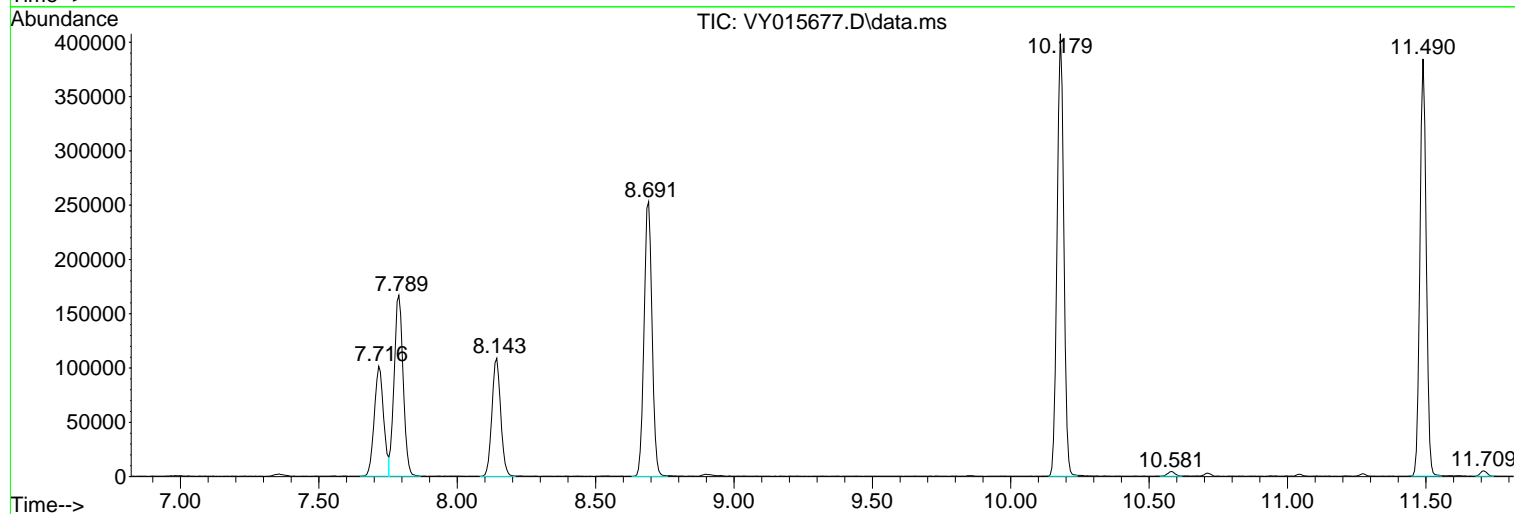
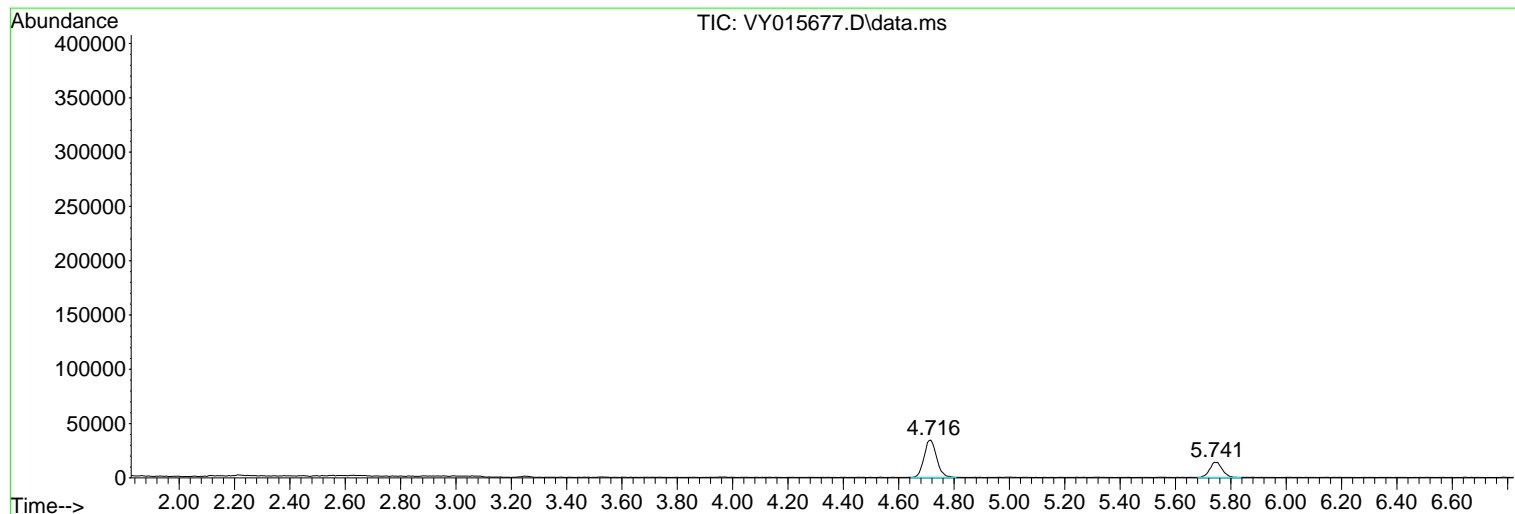
Sum of corrected areas: 3933577

Data Path : Z:\voasrv\HPCHEM1\MSVOA_Y\Data\VY092123\
 Data File : VY015677.D
 Acq On : 21 Sep 2023 17:57
 Operator : SY/MD
 Sample : 04567-11
 Misc : 5.05g/5.0mL/MSVOA_Y/SOIL
 ALS Vial : 14 Sample Multiplier: 1

Instrument :
 MSVOA_Y
 ClientSampleId :
 SE-SOIL-6

Quant Method : Z:\voasrv\HPCHEM1\MSVOA_Y\methods\82Y091923S.M
 Quant Title : SW846 8260

TIC Library : C:\Database\NIST20.L
 TIC Integration Parameters: LSCINT.P



Data Path : Z:\voasrv\HPCHEM1\MSVOA_Y\Data\VY092123\
 Data File : VY015677.D
 Acq On : 21 Sep 2023 17:57
 Operator : SY/MD
 Sample : 04567-11
 Misc : 5.05g/5.0mL/MSVOA_Y/SOIL
 ALS Vial : 14 Sample Multiplier: 1

Instrument :
 MSVOA_Y
 ClientSampleId :
 SE-SOIL-6

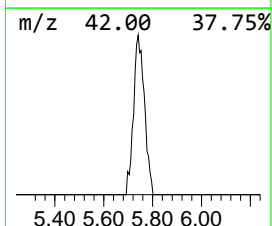
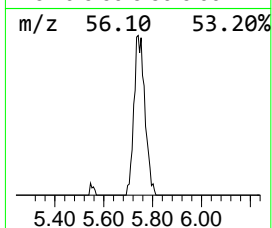
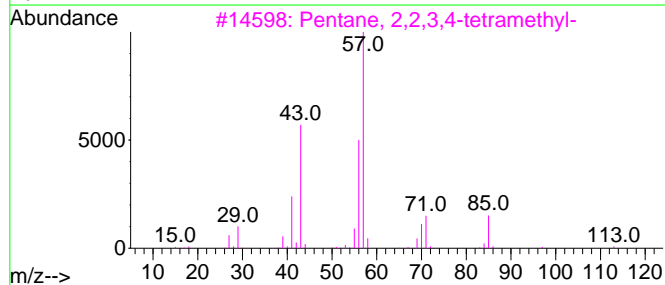
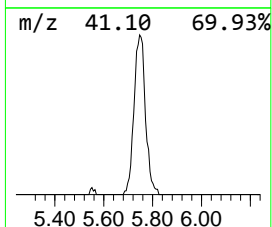
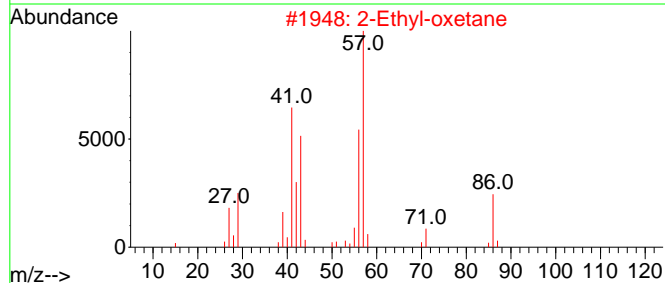
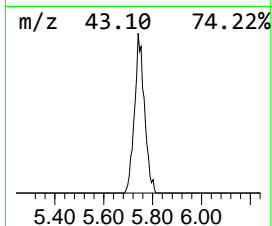
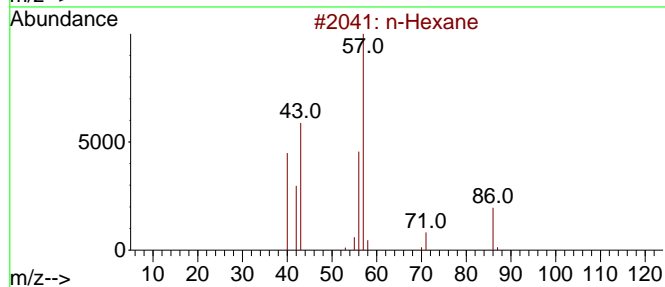
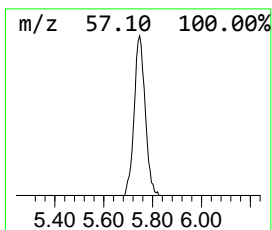
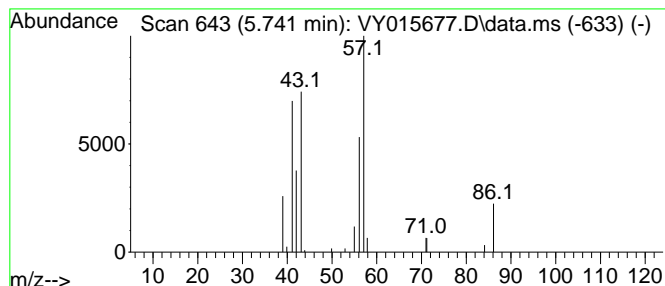
Quant Method : Z:\voasrv\HPCHEM1\MSVOA_Y\methods\82Y091923S.M
 Quant Title : SW846 8260

TIC Library : C:\Database\NIST20.L
 TIC Integration Parameters: LSCINT.P

 Peak Number 1 n-Hexane Concentration Rank 1

R.T.	EstConc	Area	Relative to ISTD	R.T.
5.741	5.92 ug/l	44199	Pentafluorobenzene	7.789

Hit#	of	5	Tentative ID	MW	MolForm	CAS#	Qual
1			n-Hexane	86	C6H14	000110-54-3	86
2			2-Ethyl-oxetane	86	C5H10O	1010386-40-2	86
3			Pentane, 2,2,3,4-tetramethyl-	128	C9H20	001186-53-4	50
4			Propanal, 2,2-dimethyl-	86	C5H10O	000630-19-3	35
5			Pentane, 3-ethyl-2,2-dimethyl-	128	C9H20	016747-32-3	28



Data Path : Z:\voasrv\HPCHEM1\MSVOA_Y\Data\VY092123\
Data File : VY015677.D
Acq On : 21 Sep 2023 17:57
Operator : SY/MD
Sample : 04567-11
Misc : 5.05g/5.0mL/MSVOA_Y/SOIL
ALS Vial : 14 Sample Multiplier: 1

Instrument :
MSVOA_Y
ClientSampleId :
SE-SOIL-6

Quant Method : Z:\voasrv\HPCHEM1\MSVOA_Y\methods\82Y091923S.M
Quant Title : SW846 8260

TIC Library : C:\Database\NIST0.L
TIC Integration Parameters: LSCINT.P

TIC Top Hit name	RT	EstConc	Units	Response	--Internal Standard--			
					#	RT	Resp	Conc
n-Hexane	5.741	5.9	ug/l	44199	1	7.789	373104	50.0